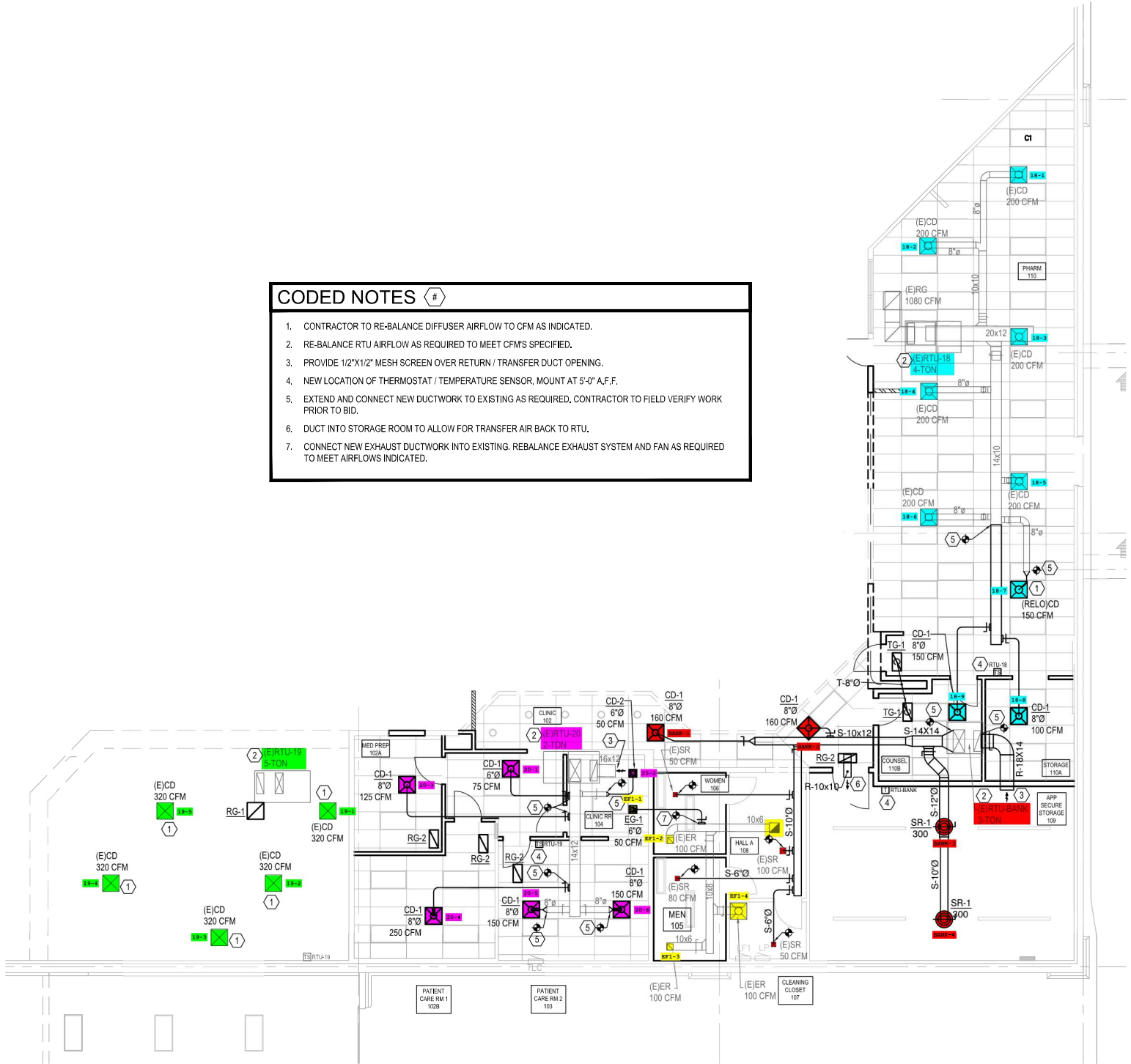


CODED NOTES

1. CONTRACTOR TO RE-BALANCE DIFFUSER AIRFLOW TO CFM AS INDICATED.
2. RE-BALANCE RTU AIRFLOW AS REQUIRED TO MEET CFM'S SPECIFIED.
3. PROVIDE 1/2"X1/2" MESH SCREEN OVER RETURN / TRANSFER DUCT OPENING.
4. NEW LOCATION OF THERMOSTAT / TEMPERATURE SENSOR, MOUNT AT 5'-0" A.F.F.
5. EXTEND AND CONNECT NEW DUCTWORK TO EXISTING AS REQUIRED, CONTRACTOR TO FIELD VERIFY WORK PRIOR TO BID.
6. DUCT INTO STORAGE ROOM TO ALLOW FOR TRANSFER AIR BACK TO RTU.
7. CONNECT NEW EXHAUST DUCTWORK INTO EXISTING. REBALANCE EXHAUST SYSTEM AND FAN AS REQUIRED TO MEET AIRFLOWS INDICATED.



MECHANICAL NEW PLAN

SCALE: 1/8" = 1'-0"

