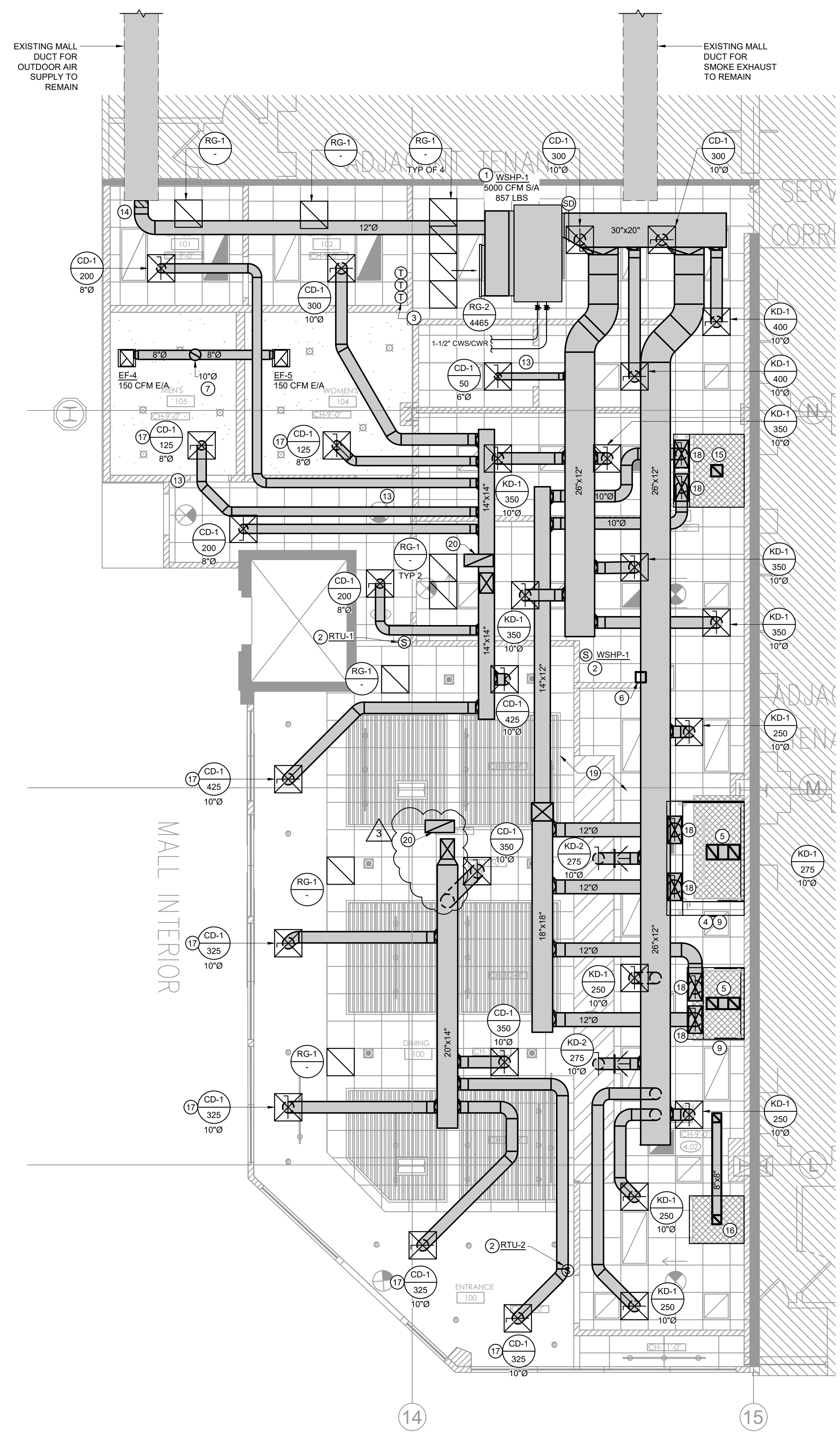


MECHANICAL ROOF PLAN  
SCALE: 3/16" = 1'-0" 1

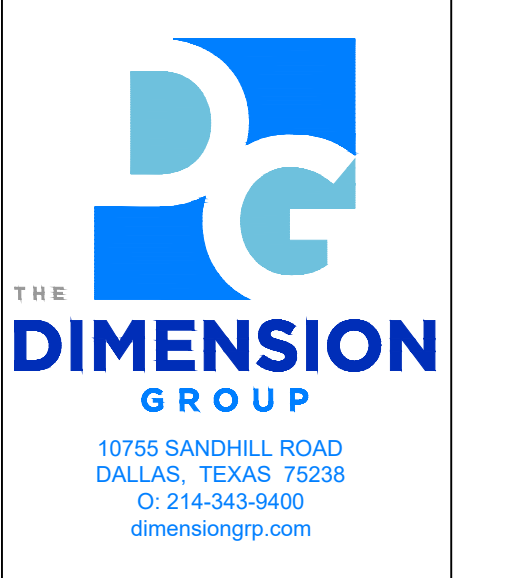


MECHANICAL FLOOR PLAN  
SCALE: 3/16" = 1'-0" 2

KEYNOTES	
1	PROVIDE AND INSTALL WSHP-1 AS SCHEDULED IN HORIZONTAL POSITION WITH FIELD FABRICATED MIXING BOX, AUXILIARY DRAIN PAN W/ CONDENSATE OVERFLOW SENSOR, FLEXIBLE CONNECTIONS, AND SUPPLY DUCT SMOKE DETECTOR. ROUTE FULL SIZE CONDENSATE DRAIN DOWN TO NEAREST FLOOR SINK WITH AIR GAP PER LOCAL CODE. AIR HANDLING UNIT SHALL BE SUSPENDED FROM STRUCTURE AND BRACED PER LOCAL CODES & AHJ REQUIREMENTS. REPLACE AIR FILTER (MIN MERV-8) AFTER COMPLETION OF CONSTRUCTION. PRIOR TO OCCUPANCY, WSHP-1 TO PROVIDE SCHEDULED OUTDOOR AIR DURING OCCUPIED HOURS FOR VENTILATION PER LOCAL CODE.
2	REMOTE ZONE TEMPERATURE SENSOR FOR AC UNIT SHALL BE WALL MOUNTED AND WIRED BACK TO THERMOSTAT. COORDINATE PLACEMENT WITH KITCHEN EQUIPMENT AND ARCHITECTURAL DRAWINGS.
3	PROGRAMMABLE THERMOSTATS TO BE PROPERLY INSTALLED IN OFFICE AND CLEARLY LABELED. VERIFY PLACEMENT WITH ARCHITECTURAL FLOOR PLAN. PROVIDE A LOCK BOX FOR EACH T-STAT, AS REQUIRED BY OWNER.
4	FIRE SUPPRESSION CABINET TO BE FURNISHED WITH THE HOOD PACKAGE, AND INSTALLED BY THE KITCHEN EQUIPMENT CONTRACTOR.
5	TYPE-1 GREASE EXHAUST DUCT SHALL BE NFPA 96 APPROVED 16 GA. WELDED BLACK IRON, EXTERNALLY WELDED WITH LIQUID TIGHT JOINTS, SEAMS, SMOOTH TRANSITIONS, AND LONG RADIUS ELBOWS AT EACH CHANGE OF DIRECTION (MIN RAD/WIDTH = 1.0). TRANSITION GREASE EXHAUST DUCT UP FROM TYPE 1 HOOD COLLAR TO ROOF MOUNTED EXHAUST FAN. ENTIRE RUN OF DUCT TO FAN SHALL BE INSTALLED WITH 3M FIRE BARRIER WRAP 615+ (ASTM E 2336) PER 8M3.0 - UL LISTED GREASE EXHAUST DUCT WRAP DETAIL. FIELD VERIFY ANY REQUIRED TRANSITIONS OR OFFSETS OF EXHAUST DUCT FROM COMBUSTIBLE MATERIALS TO MAINTAIN THE MINIMUM CLEARANCES REQUIRED PER APPLICABLE CODE(S). PROVIDE CLEANOUTS/ACCESS PANELS AT EACH CHANGE OF DIRECTION AND AS REQ'D BY NFPA 96.
6	MANUAL PULL STATION FOR KITCHEN HOOD FIRE SUPPRESSION SYSTEM ACTIVATION AND GAS SUPPLY SHUT-OFF TO BE PROVIDED BY THE FIRE SUPPRESSION SUBCONTRACTOR. GENERAL CONTRACTOR SHALL PROVIDE RECESSED JUNCTION BOX AND CONDUIT FOR PULL STATION LINKAGE. FIRE SUPPRESSION SUBCONTRACTOR SHALL VERIFY APPROVED LOCATION WITH THE LOCAL AUTHORITY AND COORDINATE THE COMPLETE INSTALLATION WITH ALL OTHER TRADES.
7	ROUTE 10" RESTROOM EXHAUST DUCT MAIN UP THRU ROOF WITH CAP AND INSECT SCREEN. COORDINATE ANY ROOF MODIFICATIONS WITH LANDLORD REPRESENTATIVE.
8	PROVIDE AND INSTALL NEW MAKE-UP AIR UNIT WITH FLEXIBLE DUCT CONNECTIONS THRU ROOF. COORDINATE ANY ROOF MODIFICATIONS WITH LANDLORD ROOFING CONTRACTOR.
9	EXPOSED GREASE DUCT AND HOOD SYSTEMS SERVING TYPE I HOODS SHALL HAVE MINIMUM 18 INCHES CLEARANCE FROM UNPROTECTED COMBUSTIBLE CONSTRUCTION. CLEARANCE MAY BE REDUCED TO NOT LESS THAN 3 INCHES WHEN COMBUSTIBLE CONSTRUCTION IS PROTECTED WITH MATERIAL REQUIRED FOR ONE-HOUR FIRE-RESISTIVE CONSTRUCTION.
10	PROVIDE AND INSTALL NEW ROOFTOP UNIT WITH FACTORY INSTALLED SMOKE DETECTOR AS SCHEDULED. ROUTE NEW FULL SIZE PLENUMS AND FLEXIBLE DUCT CONNECTIONS THRU ROOF. COORDINATE ANY ROOF MODIFICATIONS WITH LANDLORD ROOFING CONTRACTOR. BALANCE TO PROVIDE MINIMUM OUTDOOR AIR AS SCHEDULED. REPLACE AIR FILTER(S) AFTER COMPLETION OF CONSTRUCTION. PRIOR TO OCCUPANCY.
11	EXTEND FULL SIZE CONDENSATE DRAIN TO A ROOF MOUNTED SPLASH PAD OR AN ACCEPTABLE TERMINATION POINT REQUIRED BY CODE.
12	PER 2019 CMC SECTION 510.9.2, EXHAUST FAN(S) SERVING TYPE I HOOD(S) MUST MAINTAIN 10 FEET CLEARANCE FROM ADJACENT BUILDINGS, PROPERTY LINES, GRADE LEVEL, ELECTRICAL EQUIPMENT OR LINES, MECHANICAL AIR INTAKES, AND OPERABLE DOORS OR WINDOWS. EXHAUST FAN BASE SHALL BE INSTALLED 40 INCHES ABOVE ROOF SURFACE. CONTRACTOR TO CONFIRM EXHAUST FAN WILL NOT LEAK GREASE. PROVIDE MANUFACTURER GREASE COLLECTION ACCESSORY IF REQUIRED.
13	UNDERCUT DOOR FOR AIR TRANSFER.
14	CONNECT OUTDOOR AIR DUCT TO LANDLORD PROVIDED MAIN OF ADEQUATE SIZE. PROVIDE AND INSTALL LOW LEAK MOTORIZED CONTROL DAMPER AT BRACH CONNECTION. DAMPER SHALL AUTOMATICALLY SHUTOFF WHEN THE SYSTEM IS NOT IN USE.
15	TRANSITION EXHAUST DUCT UP FROM TYPE 2 HOOD COLLAR UP CHASE TO ROOF MOUNTED EXHAUST FAN WITH LONG RADIUS ELBOWS AT EACH CHANGE OF DIRECTION (MIN RAD/WIDTH = 1.0). DUCT SIZE SHALL BE MAINTAINED THROUGHOUT. EXHAUST FAN SHALL MAINTAIN 10 FEET CLEARANCE FROM AIR INTAKES.
16	TRANSITION EXHAUST DUCT UP FROM DISHWASHER TO ROOF MOUNTED EXHAUST FAN WITH LONG RADIUS ELBOWS AT EACH CHANGE OF DIRECTION (MIN RAD/WIDTH = 1.0). SLOPE DUCTWORK BACK TO HOOD AT 1/4" PER FOOT. EXHAUST DUCTWORK SHALL BE WATER TIGHT WITH LIQUID TIGHT SEAMS AND NO JOINTS. INSTALL COMPLETE WITH EXTERNAL DUCT INSULATION SIMILAR TO OTHER HVAC DUCTWORK. EXHAUST FAN SHALL MAINTAIN 10 FEET CLEARANCE FROM AIR INTAKES.
17	AIR DEVICE IN HARD LID CEILING SHALL BE INSTALLED COMPLETE WITH OPPOSED BLADE DAMPER FOR VOLUME ADJUSTMENT.
18	ROUTE MAKEUP AIR DUCTWORK TO PERFORATED SUPPLY PLENUM COLLAR CONNECTION.
19	VERIFY ALL DUCTWORK ROUTES PRIOR TO FABRICATION. INSTALL DUCTWORK TIGHT TO BOTTOM OF DECK BEFORE AND AFTER BEAM TRANSITIONS WHERE POSSIBLE. COORDINATE WITH EXISTING CONDITIONS AND OTHER TRADES PRIOR TO INSTALLATION.
20	FULL RETURN AIR PLENUM SHALL BE INTERNALLY LINED. BOTTOM OF RETURN PLENUM SHALL BE ABOVE LOCATED ABOVE CEILING. RETURN AIR INTAKE OPENING SHALL HAVE A MINIMUM FREE AREA OF 12 SQUARE FEET. PROVIDE 1/4" X 1/4" CORROSION RESISTANT WIRE MESH SCREEN OVER INTAKE.

THE EXHAUST AND MAKE-UP AIR SYSTEMS SHALL BE CONNECTED BY ELECTRICAL INTERLOCK SWITCH.

THIS DRAWING IS DIAGMATIC AND BASED ON THE BEST AVAILABLE INFORMATION AT THE TIME OF THE DESIGN. THEREFORE, THIS DRAWING MAY NOT REFLECT ACTUAL CONDITIONS. ALL MECHANICAL INSTALLATIONS INDICATED ON THIS SHEET SHALL BE FIELD VERIFIED PRIOR TO BID.



REVISIONS
03/17/2021 CITY COMMENTS
04/28/2021 CITY COMMENTS
05/25/2021 FIELD CHANGES

THESE DRAWINGS AND SPECIFICATIONS OF TSUKURU USA, ALL INFORMATION CONTAINED HEREIN IS RESTRICTED FOR USE ONLY ON THE PROJECT AND SITE SPECIFICALLY IDENTIFIED HEREIN. FEDERAL LAW PROHIBITS THE REPRODUCTION, SALE OR OTHER DISSEMINATION OF THESE DRAWINGS WITHOUT THE EXPRESSED WRITTEN PERMISSION OF TSUKURU USA. THESE DRAWINGS AND SPECIFICATIONS SHALL CONSTITUTE PRIMA FACIE EVIDENCE OF ACCEPTANCE OF THESE RESTRICTIONS.



05/25/2021

**KURA SUSHI**  
3251 20TH AVE,  
SAN FRANCISCO, CA 94132

OWNER / TENANT



DRAWING TITLE  
**MECHANICAL PLANS**

PROJECT MGR.	TH
SCALE	DATE
SEE SHEET	05/25/2021
	DRAWN BY
	CS
	SHEET NUMBER

M1.0

**NON-INFRINGEMENT STATEMENT**

THE BUILDING RENOVATIONS IN THESE DRAWINGS DO NOT AFFECT THE DESIGN OR OPERATION OF EXISTING SMOKE CONTROL SYSTEMS.



03/22/21

WATER SOURCE HEAT PUMP SCHEDULE															
MARK	MANUFACTURER	MODEL	NOMINAL TONS	CFM	OSA (CFM)	E.S.P. (IN. WC)	GPM	PRESSURE DROP (FT-HD)	COOLING TOTAL (MBH)	COOLING SENSIBLE (MBH)	HEATING TOTAL (MBH)	ELECTRICAL DATA			WEIGHT
												V/PH	MCA	MOCP	
WSHP-1	TRANE	GEHE1504	12.5	5,000	535	0.8"	25	6.5	159.7	126.7	133.3	460/3	26.5	35	857

**NOTES (ALL UNITS):**  
 A. PROVIDE MERV8 FILTER.  
 B. PROVIDE WITH HOSE KIT ASSEMBLIES WITH TWO (2) TWO-WAY CONTROL VALVES.  
 C. SMOKE DETECTORS TO BE PROVIDED AND INSTALLED BY CONTRACTOR IN THE SUPPLY AIR DUCT UPSTREAM OF THE OUTDOOR AIR CONNECTION.  
 D. CONDENSATE TRAP SHALL BE PROVIDED AND INSTALLED BY CONTRACTOR. PROVIDE TRAP OF ADEQUATE DEPTH TO PREVENT STATIC FROM OVERCOMING TRAP SEAL. ROUTE TO NEAREST APPROVED RECEPTOR.  
 E. PROVIDE WITH SOUND ATTENUATION (MUTE) PACKAGE.  
 F. PROVIDE WATERSIDE ECONOMIZER OPTION.  
 G. AUXILIARY DRAIN PAN WITH WATER-LEVEL MONITORING DEVICE SHALL BE PROVIDED AND INSTALLED BY CONTRACTOR. WATER-LEVEL DEVICE SHALL CONFORM TO UL 508 AND 2009 IMC SECTION 307.2.3.1  
 H. OUTDOOR AMBIENT DESIGN TEMPERATURE 95°F.  
 I. SET FAN OPERATION TO CONTINUOUS.  
 J. TEMPERATURE SET POINT DURING OCCUPIED HOURS; HEATING MODE: 70°F - COOLING MODE: 75°F. ADJUST SET POINT WHERE REQUIRED BY TENANT REPRESENTATIVE.

MECHANICAL VENTILATION (§120.1(b)2)										
ZONE	AREA BASIS			OCCUPANCY BASIS						REQUIRED VA (LARGER OF CFM)
	CONDITIONED AREA (SQFT)	CFM PER SQFT	MIN CFM BY AREA	CBC OCCUPANT LOAD (SQFT/OCCPT)	NUMBER OF OCCUPANTS (CBC)	1/2 MAX OCCUPANT LOAD (§120.1(b)2B)	CFM PER OCCUPANT	MIN CFM BY OCCUPANT		
MAIN ENTRY LOBBY	227	0.15	34	100	2.3	1.1	15	17	34	
DINING ROOM	883	0.50	442	15	58.9	29.4	15	442	442	
CORRIDOR	122	0.15	18	100	1.2	0.6	15	9	18	
OFFICE	113	0.15	17	100	1.1	0.6	15	8	17	
KITCHEN	1405	0.15	211	200	7.0	3.5	15	53	211	
STORAGE	97	0.15	15	300	0.3	0.2	15	2	15	
RESTROOM	246	0.15	37	100	2.5	1.2	15	18	37	
TOTALS	3093		773		74		37	550	773	

EXHAUST FAN SCHEDULE											
MARK	SERVICE	CFM	E.S.P. *WG	RPM	MOTOR HP	VOLTS/ PH	MANUFACTURER	MODEL	TYPE	WEIGHT	NOTES
KEF-1	EXHAUST HOOD #1	1050	1.25	1268	0.75	208/1	CAPTIVE AIRE	DU85HFA	CENTRIFUGAL UPBLAST	88	1.3.5
KEF-2	EXHAUST HOOD #2	1450	1.0	1262	0.75	208/1	CAPTIVE AIRE	DU85HFA	CENTRIFUGAL UPBLAST	88	1.3.5
KEF-3	EXHAUST HOOD #3	800	0.5	1411	1/3	115/1	CAPTIVE AIRE	DU33HFA	CENTRIFUGAL UPBLAST	74	1.5
KEF-4	EXHAUST HOOD #4	525	0.5	1188	1/3	115/1	CAPTIVE AIRE	DU33HFA	CENTRIFUGAL UPBLAST	67	1.5
EF-4	RESTROOM	150	0.125	1160	52.4	115/1	LOREN COOK	GC-168	CEILING MOUNTED	11	2.4.6
EF-5	RESTROOM	150	0.125	1160	52.4	115/1	LOREN COOK	GC-168	CEILING MOUNTED	11	2.4.6

**NOTES: (NOT ALL MAY APPLY)**  
 1. WEATHER PROOF DISCONNECT SWITCH AND INTERNAL WIRING SHALL BE FACTORY INSTALLED.  
 2. ELECTRICAL CONTRACTOR SHALL INTERLOCK WITH RESPECTIVE RESTROOM LIGHT SWITCH FOR SIMULTANEOUS OPERATION.  
 3. PROVIDE FACTORY AVAILABLE GREASE BOX.  
 4. PROVIDE GRAVITY BACKDRAFT DAMPER.  
 5. FURNISHED WITH KITCHEN HOOD PACKAGE. INSTALLED BY MECHANICAL CONTRACTOR.  
 6. FURNISHED AND INSTALLED BY MECHANICAL CONTRACTOR.

AIR BALANCE SCHEDULE				
MARK	CFM			E/A
	S/A	O/A	E/A	
RTU-1	2000	-	-	
RTU-2	2000	-	-	
WSHP-1	5000	535	-	
MUA-1	-	3275	-	
HOOD-1	-	-	1050	
HOOD-2	-	-	1450	
HOOD-3	-	-	800	
HOOD-4	-	-	525	
RESTROOM	-	-	300	
TOTAL	9000	3810	4125	

NET TENANT PRESSURIZATION = -315 CFM  
**MALL REQUIREMENT: FOOD STORES WITH STRONG ODORS MUST MAINTAIN NEGATIVE PRESSURIZATION. TENANT IS OPEN TO MALL INTERIOR VENTILATION.**

MUA UNIT SCHEDULE	
MAKE-UP AIR UNIT(S)	
MARK	MUA-1
CAPTIVE AIRE MODEL NO.	A2-D.250-20D
INSTALLED (LBS)	685

FAN SECTION	
MOTOR HP	2.0
MOTOR BHP	1.27
RATED CFM	3275
E.S.P. (IN W.G.)	0.5
FAN RPM	1302

TOTAL UNIT ELECTRIC DATA	
VOLTS/PH/Hz	208/3/60
MCA/MOCP	7.7/15
GAS-FIRED HEATING	
INPUT CAPACITY	128.739
TEMP RISE (°F)	34

**NOTES: (NOT ALL MAY APPLY)**  
 1. PROVIDE AND INSTALL PER MANUFACTURER'S SPECIFICATIONS.

- 2019 CALIFORNIA GREEN BUILDING STANDARDS CODE - ENVIRONMENTAL QUALITY**
- IF THE EXISTING HVAC SYSTEM IS USED DURING CONSTRUCTION, USE RETURN AIR FILTERS WITH A MERV OF 13. REPLACE ALL FILTERS IMMEDIATELY PRIOR TO OCCUPANCY (5.504.1.3).
  - ALL DUCT AND OTHER RELATED AIR DISTRIBUTION COMPONENT OPENINGS SHALL BE COVERED WITH TAPE, PLASTIC, OR SHEET METAL UNTIL THE FINAL STARTUP OF THE HEATING, COOLING, AND VENTILATING EQUIPMENT (5.504.3).
  - PROVIDE FILTERS WITH A MINIMUM EFFICIENCY REPORTING VALUE (MERV) OF AT LEAST 8 FOR OUTSIDE AND RETURN AIR IN REGULARLY OCCUPIED AREAS OF MECHANICALLY VENTILATED BUILDINGS PER CGSBC 5.504.5.3.
  - HVAC, REFRIGERATION, AND FIRE-SUPPRESSION EQUIPMENT SHALL NOT CONTAIN CFCS OR HALON PER CGSBC 5.508.
  - SEAL PERMANENT HVAC DUCT WORK & EQUIPMENT STORED ONSITE BEFORE INSTALLATION PER CGSBC 5.504.1-3

- 2019 CALIFORNIA GREEN BUILDING STANDARDS CODE - TESTING AND ADJUSTING**
- GENERAL HVAC SYSTEM COMPONENTS  
 THE SYSTEM DUCTWORK WILL BE INSPECTED AND ANY INSTALLATION DEFICIENCIES WILL BE NOTED FOR RESOLUTION (I.E., DUCTWORK MISSING, DAMAGE, ETC.)
- INSTALLATION COMPLETION  
 CONTRACTORS MUST COMPLETE INSTALLATION OF EQUIPMENT, PIPING AND DUCTWORK, THEN CLEAN SYSTEMS AND TEST THEM FOR INTEGRITY. ELECTRICAL CONNECTIONS MUST BE PROVIDED TO EACH PIECE OF EQUIPMENT AND CONTROL ELEMENT INSTALLATION, AND WIRING MUST BE COMPLETED AS DESCRIBED IN THE CONTRACT DOCUMENTS.
- CONTROL SYSTEM POINT-TO-POINT CHECK  
 THE CONTROLS CONTRACTOR WILL PERFORM POINT-TO-POINT TESTING, ALONG WITH RANGE AND SPAN CALIBRATION OF ALL CONTROL COMPONENTS. THE PROCEDURES AND METHODS FOR THIS TESTING MUST BE SUBMITTED TO THE TAB CONTRACTOR FOR REVIEW AND APPROVAL. THE CHECKOUT MAY BE WITNESSED BY THE TAB CONTRACTOR AND OTHER APPROPRIATE PARTIES.
- SYSTEM START-UP  
 SUBCONTRACTORS MUST START THE EQUIPMENT AS REQUIRED IN THEIR PORTION OF THE SPECIFICATIONS AND IN ACCORDANCE WITH THE START-UP PLAN. THIS TASK MUST BE DOCUMENTED AS REQUIRED BY THE SPECIFICATIONS AND MAY BE WITNESSED BY THE TAB CONTRACTOR OR OTHER APPROPRIATE PARTIES.
- TEST, ADJUST AND BALANCE (TAB)  
 AFTER THE MECHANICAL AND CONTROL CONTRACTORS HAVE INSTALLED COMPLETE SYSTEMS, THE TAB CONTRACTOR WILL BALANCE THOSE SYSTEMS. THE TAB EFFORT WILL BE COORDINATED BY GC, MECHANICAL CONTRACTOR AND CONTROLS CONTRACTOR. TAB ACTIVITIES WILL REQUIRE COMPLETE MECHANICAL INSTALLATION AND CONTROL SYSTEM FUNCTION. ALTHOUGH CONTROL SEQUENCE VERIFICATION MAY OCCUR SIMULTANEOUSLY, AS LONG AS A SYSTEM IS SUFFICIENTLY INDEPENDENT OF OTHER SYSTEMS, BALANCING WORK MAY COMMENCE PRIOR TO THE COMPLETION OF OTHER SYSTEMS. THE HVAC SYSTEM AND COMPONENTS WILL BE TESTED, ADJUSTED, AND BALANCED IN ACCORDANCE WITH THE PROCEDURES DEFINED BY THE FOLLOWING:  
 -TESTING ADJUSTING AND BALANCING BUREAU NATIONAL STANDARDS  
 -NATIONAL ENVIRONMENTAL BALANCING BUREAU PROCEDURAL STANDARDS  
 -ASSOCIATED AIR BALANCE COUNCIL NATIONAL STANDARDS  
 -OR APPROVED BY THE ENFORCING AGENCY.
- REPORTING  
 A FINAL REPORT FOR THE TESTING AND ADJUSTING OF ALL NEW SYSTEMS SHALL BE COMPLETED PRIOR TO FINAL APPROVAL BY THE FIELD INSPECTOR. THIS REPORT SHALL BE SIGNED BY THE INDIVIDUAL RESPONSIBLE FOR PERFORMING THESE SERVICES (5.410.4.4).
- AN "OPERATION & SYSTEMS MANUAL" WITH CONTENT PER CGSBC 5.410.4.5 AND IN A FORMAT ACCEPTABLE TO THE ENFORCING AGENCY SHALL BE PROVIDED TO THE OWNER OR REPRESENTATIVE AND TO THE FIELD INSPECTOR AT THE TIME OF FINAL INSPECTION. (5.410.4.5.1)

GS4: SAN FRANCISCO GREEN BUILDING FOR NON-RESIDENTIAL INTERIOR-ONLY ALTERATION PROJECTS					
	TITLE	SOURCE	DESCRIPTION	DISCIPLINE	REFERENCE
WATER	INDOOR WATER USE REDUCTION	CALGREEN 5.303.3, SF BUILDING CODE CH.13A	MEET FLUSH/FLOW REQUIREMENTS. LARGE NON-RESIDENTIAL INTERIORS PROJECTS MUST UPGRADE ALL NON-COMPLIANT FIXTURES PER SF BUILDING CODE CH.13A.	PLUMBING	SEE WATER USE REDUCTION TABLE ON SHEET P-2.0
	WATER METERING	CALGREEN 5.303.1	MEET SUB-METERING REQUIREMENTS.	PLUMBING	SEE CAL GREEN STANDARDS CODE ON SHEET P-2.0
ENERGY	ENERGY EFFICIENCY	CA ENERGY CODE	COMPLY WITH ALL PROVISIONS OF THE CA ENERGY CODE.	MECHANICAL	SEE CAL GREEN STANDARDS CODE ON SHEET M-2.0
	COMMISSIONING	CALGREEN 5.410.4	ALL NEW HVAC EQUIPMENT MUST BE TESTED AND ADJUSTED.	MECHANICAL	SEE CAL GREEN STANDARDS CODE ON SHEET M-2.0
HVAC	REFRIGERANT MANAGEMENT	CALGREEN 5.508.1	USE NO HALONS OR CFCS IN HVAC.	MECHANICAL	SEE CAL GREEN STANDARDS CODE ON SHEET M-2.0
INDOOR ENVIRONMENTAL QUALITY	AIR FILTRATION (CONSTRUCTION)	CALGREEN 5.504.1-3	SEAL PERMANENT HVAC DUCTS/EQUIPMENT STORED ONSITE BEFORE INSTALLATION.	MECHANICAL	SEE CAL GREEN STANDARDS CODE ON SHEET M-2.0
	AIR FILTRATION (OPERATIONS)	CALGREEN 5.504.5.3	PROJECTS MUST PROVIDE MERV-13 FILTERS ON HVAC FOR REGULARLY OCCUPIED, ACTIVELY VENTILATED SPACES.	MECHANICAL	SEE CAL GREEN STANDARDS CODE ON SHEET M-2.0

GREEN BUILDING COMPLIANCE PROFESSIONAL OF RECORD FOR MECHANICAL/PLUMBING MEASURES:  
 I HAVE BEEN RETAINED BY THE PROJECT SPONSOR TO VERIFY THAT APPROVED CONSTRUCTION DOCUMENTS AND CONSTRUCTION FULLFILL THE REQUIREMENTS OF SAN FRANCISCO GREEN BUILDING CODE. IT IS MY PROFESSIONAL OPINION THAT THE REQUIREMENTS OF THE SAN FRANCISCO GREEN BUILDING CODE WILL BE MET. I WILL NOTIFY THE DEPARTMENT OF BUILDING INSPECTION IF THE PROJECT WILL, FOR ANY REASON, NOT SUBSTANTIALLY COMPLY WITH THESE REQUIREMENTS, OR IF I AM NO LONGER THE GREEN BUILDING COMPLIANCE PROFESSIONAL OF RECORD FOR THE PROJECT.

TERRY HESSELTINE, P.E.  
 NAME  
 THE DIMENSION GROUP  
 FIRM  
 #35558  
 ENGINEERING LICENSE NUMBER

AFFIX STAMP BELOW:  
  
 03/22/21

MECHANICAL LEGEND		
SYMBOL	ABBR.	DESCRIPTION
	CD	CEILING DIFFUSER - SUPPLY
	CR	CEILING REGISTER - RETURN
	CE	CEILING REGISTER - EXHAUST
		NEW DUCT
		AIR DEVICE DESIGNATION
	TSTAT	PROGRAMMABLE THERMOSTAT
	SENS	REMOTE TEMPERATURE SENSOR
	SD	SMOKE DETECTOR
	FSD	FIRE SMOKE DAMPER
	POC	POINT OF CONNECTION
	CFM	CUBIC FEET PER MINUTE
	S/A	SUPPLY AIR
	O/A	OUTSIDE AIR
	E/A	EXHAUST AIR
	S.P.	STATIC PRESSURE
	FOH	FRONT OF HOUSE
	BOH	BACK OF HOUSE

PARTITION LEGEND	
	EXISTING PARTITIONS TO REMAIN.
	NEW PARTITION. SEE PARTITION TYPES BELOW.
	NEW STOREFRONT GLAZING WALL U.O.N. REFER A-3.0, A-3.1

**PARTITION TYPE**

- 6" ABOVE CEILING HEIGHT NON-LOAD BEARING PARTITION WALL WITH ONE LAYER OF 5/8" TYPE X GYP.BD. ON BOTH SIDES, USE MR GYP. BD. ON WET SIDE. 3-5/8" X 20 GAUGE 16" O.C. PROVIDE INSULATION IN THE STUD CAVITY FOR ROOM#102,104 & 105. SEE DETAIL 2/A-8.0.
- 6" ABOVE CEILING HEIGHT NON-LOAD BEARING FURRING WALL WITH ONE LAYER OF 5/8" TYPE X GYP.BD. ON ONE SIDE, AGAINST EXISTING DEMISING WALL / STRUCTURAL COLUMN. 3-5/8" X 20 GAUGE 16" O.C. SEE DETAIL 3/A-8.0.
- 6" ABOVE CEILING HEIGHT NON-LOAD BEARING PARTITION WALL, WITH ONE LAYER OF 5/8" TYPE X GYP.BD ON BOTH SIDES, USE MR GYP.BD. ON WET SIDE. 6" X 20 GAUGE 16" O.C. PROVIDE INSULATION IN THE STUD CAVITY. SEE DETAIL 4/A-8.0.
- EXISTING 1-HR FIRE RATED FULL HEIGHT INTERIOR DEMISING WALL.

AIR DEVICE SCHEDULE							
MARK	FACE SIZE (NECK SIZE)	TYPE	MOUNTING TYPE	MAXIMUM N.C.	MAKE	MODEL	NOTES
CD-1	24x24	SUPPLY	LAY-IN (TILE CLG & GYP)	30	TITUS	TMS-AA	1,3,5
KD-1	24x24	SUPPLY	LAY-IN (TILE CLG)	30	TITUS	PAS-AA	1,3,4
KD-2	22x10	SUPPLY	SURFACE (WALL)	30	TITUS	300FL	1,3
RG-1	24x24	RETURN	LAY-IN (TILE CLG & GYP)	40	TITUS	PAR-AA	1,3
RG-2	48x24	RETURN	LAY-IN (TILE CLG & GYP)	40	TITUS	350FL	1

**NOTES: (NOT ALL MAY APPLY)**  
 1. PROVIDE NECESSARY MOUNTING HARDWARE AND ACCESSORIES AS REQUIRED FOR INTENDED INSTALLATION.  
 2. AIR DEVICE(S) SHALL BE PAINTED TO MATCH DUCTWORK.  
 3. AIR DEVICE(S) SHALL BE PAINTED TO MATCH CEILING OR WALL.  
 4. DO NOT INSTALL WITH PATTERN CONTROLLERS.  
 5. INSTALL AIR DEVICE WITH OPPOSED BLADE DAMPER WHERE INSTALLED IN GYP.

- MECHANICAL GENERAL NOTES**
- NOTE: FOR THE PURPOSE OF CLARITY AND LEGIBILITY, THE DRAWINGS ARE ESSENTIALLY DIAGRAMMATIC AND ALTHOUGH SIZES AND LOCATIONS OF EQUIPMENT ARE DRAWN TO SCALE WHEREVER POSSIBLE, THE CONTRACTOR SHALL MAKE USE OF ALL DATA IN ALL OF THE CONTRACT DOCUMENTS AND VERIFY THIS INFORMATION PRIOR TO ORDERING, FABRICATING OR INSTALLING ANY MATERIALS.
  - THE MECHANICAL CONTRACTOR SHALL PROVIDE COMPLETE INFORMATION AND COOPERATE WITH THE OTHER CONTRACTORS AND TRADES AS REQUIRED FOR THE COMPLETION AND COORDINATION OF THE COMPLETE PROJECT.
  - THE MECHANICAL CONTRACTOR SHALL BE RESPONSIBLE FOR ADMINISTERING ALL WARRANTIES ON EQUIPMENT WHICH THEY FURNISH AND INSTALL.
  - PROVIDE WRITTEN WARRANTY TO REPLACE ALL FAULTY MATERIALS AND/OR LABOR, AT NO COST TO TENANT, FOR A PERIOD OF ONE YEAR FROM DATE OF ACCEPTANCE. PROVIDE 5 YEAR COMPRESSOR WARRANTY FOR AC UNITS. WARRANTIES SHALL BEGIN ON THE DATE OF SUBSTANTIAL COMPLETION.
  - ALL DUCT DIMENSIONS SHOWN ON DRAWINGS ARE CLEAR INSIDE DIMENSIONS.
  - THE MECHANICAL CONTRACTOR SHALL COORDINATE WITH THE GENERAL CONTRACTOR AND OTHER TRADES ALL REQUIRED OPENINGS AND PENETRATIONS. ALL REQUIRED OPENINGS IN FOUNDATIONS, FLOORS, WALLS AND ROOF SHALL BE CONSTRUCTED INTO THE STRUCTURE WITH THE USE OF SLEEVES, CURBS, ETC. CUTTING AND PATCHING SHALL BE HELD TO A MINIMUM.
  - COORDINATE THE INSTALLATION AND FINISH OF ALL SUPPLY AND RETURN AIR DEVICES. AIR DEVICES LOCATED IN GUEST AREAS SHALL BE PAINTED PER THE ARCHITECTURAL DRAWINGS FINISH SCHEDULE. ALL INTERIOR FACES OF DUCTWORK BEHIND RETURN AIR GRILLES SHALL BE PAINTED FLAT BLACK FOR LINE OF SIGHT.
  - THERMOSTATS AND REMOTE SENSORS SHALL BE LOCATED AT 48" A.F.F. EXACT LOCATIONS SHALL BE FIELD COORDINATED TO AVOID INTERFERENCE WITH WALL-MOUNTED WORK OR PROXIMITY TO HEATING EQUIPMENT.
  - ALL SUPPLY, RETURN, AND RESTROOM EXHAUST DUCTWORK SHALL BE INSTALLED AS HIGH AS POSSIBLE UNDER THE ROOF STRUCTURE.
  - ALL RECTANGULAR, ROUND, AND FLEXIBLE DUCTWORK SHALL BE SIZED AS SHOWN ON THESE DRAWINGS; AND SHALL BE FABRICATED AND INSTALLED ACCORDING TO THE MOST RECENTLY PUBLISHED SMACNA STANDARDS. ALL JOINTS, SEAMS, AND CONNECTIONS MUST BE SECURELY FASTENED & SEALED BY APPROVED METHODS.
  - ANY FLEXIBLE DUCTS SHALL BE INSTALLED IN CONCEALED SPACES ONLY. THE MAXIMUM ALLOWABLE LENGTH OF FLEXIBLE DUCT SHALL BE 10 FEET. ALL FLEXIBLE DUCTS SHALL BE CONNECTED TO BRANCH RUNS AND FITTINGS WITH A PANDUIT-TYPE BAND, AND SHALL NOT BE ATTACHED DIRECTLY TO THE AIR DEVICE COLLAR.
  - ALL HVAC SUPPLY AND RETURN EXPOSED DUCTWORK SHALL BE INTERNALLY LINED AND PINNED WITH MINIMUM R-4.2, 1" INSULATION WITH VAPOR BARRIER. INSULATION SHALL HAVE MAXIMUM RATINGS OF 25 FLAME SPREAD, 50 SMOKE DEVELOPED. REFER TO ARCHITECTURAL DRAWINGS FOR DUCT PAINT OR COLOR SPECIFICATION.
  - ALL HVAC SUPPLY AND RETURN CONCEALED DUCTWORK TO BE EXTERNALLY WRAPPED AND SECURED WITH MINIMUM R-8.0 INSULATION WITH VAPOR BARRIER PER 2019 CALIFORNIA BUILDING ENERGY EFFICIENCY STANDARDS. INSULATION SHALL HAVE MAXIMUM RATINGS OF 25 FLAME SPREAD, 50 SMOKE DEVELOPED.
  - ALL PENETRATIONS IN FIRE RATED WALL ASSEMBLIES SHALL BE SEALED WITH UL LISTED FIRE STOPPING MATERIAL.
  - SUPPLY, RETURN, AND RESTROOM EXHAUST DUCT CONSTRUCTION SHALL BE GALVANIZED STEEL GAUGES, SWAY BRACING AND SUSPENSION SHALL CONFORM TO SMACNA STANDARDS. SEAL ALL SEAMS AND JOINTS AIR AND WATER TIGHT. FLEXIBLE ALUMINUM DUCTWORK OR FIBERGLASS DUCTBOARD IS NOT ALLOWED (UNO).
  - ALL TYPE-1 GREASE EXHAUST DUCTS SHALL BE NFPA 96 APPROVED 16 GA. WELDED BLACK IRON, EXTERNALLY WELDED WITH LIQUID TIGHT JOINTS, SEAMS, AND SMOOTH RADIUS ELBOWS AND TRANSITIONS.
  - PITCH ALL HORIZONTAL GREASE AND CONDENSATE DUCTWORK UNIFORMLY BACK TOWARDS THE RESPECTIVE HOOD OR APPLIANCE AT A MINIMUM 1/4" PER FOOT (NOT TO EXCEED 50'-0").
  - ALL TYPE-1 GREASE EXHAUST DUCTS SHALL BE DOUBLE WRAPPED WITH U.L. LISTED FIRE WRAP SIMILAR TO 3M FIRE BARRIER DUCT WRAP 615+ IN ACCORDANCE WITH THE MANUFACTURER'S INSTALLATION INSTRUCTIONS. EACH GREASE DUCT RISER SHALL BE WRAPPED TO THE FULL EXTENT POSSIBLE FROM THE HOOD COLLAR CONNECTION UP TO THE TERMINATION AT THE EXHAUST FAN INLET. ALL GREASE EXHAUST FAN ROOF CURBS SHALL BE VENTED PER NFPA 96. PROVIDE REQUIRED ACCESS FOR SERVICING AND CLEANING.
  - ROOF CURBS FOR EXHAUST FANS SHALL BE FACTORY FABRICATED OF FULL WELDED STEEL CONSTRUCTION WITH WOOD NAILER, AND FURNISHED WITH THE HOOD AND FAN PACKAGE. VERIFY REQUIREMENTS FOR THE ROOF CURB WITH THE EQUIPMENT SUPPLIER. THE GENERAL CONTRACTOR SHALL FLASH ROOF CURBS AND SHIM DEAD LEVEL. COORDINATE EXACT SIZE AND LOCATION OF ROOF OPENINGS WITH THE STRUCTURAL FRAMING. CUTTING OF STRUCTURAL MEMBERS IS NOT PERMITTED.
  - ROOF CURBS FOR ROOFTOP UNITS SHALL BE FACTORY FABRICATED OF FULL WELDED STEEL CONSTRUCTION WITH WOOD NAILER, AND FURNISHED WITH THE HVAC EQUIPMENT PACKAGE. VERIFY REQUIREMENTS FOR THE ROOF CURBS WITH THE EQUIPMENT SUPPLIER. THE GENERAL CONTRACTOR SHALL FIELD ASSEMBLE THE ROOF CURBS, FLASH AND SHIM DEAD LEVEL. COORDINATE EXACT SIZE AND LOCATION OF ROOF OPENINGS WITH THE STRUCTURAL FRAMING. CUTTING OF STRUCTURAL MEMBERS IS NOT PERMITTED.
  - THE MECHANICAL CONTRACTOR SHALL BE RESPONSIBLE FOR REPLACING THE AIR FILTERS AT THE ROOFTOP UNITS WITH 2" THICK HEATED MERV-13 THROW AWAY TYPE AIR FILTERS AT THE COMPLETION OF CONSTRUCTION AND PRIOR TO AIR BALANCE AND STORE TURNOVER.
  - A FULL CERTIFIED MECHANICAL AIR TEST AND BALANCE REPORT SHALL BE PERFORMED BY AN APPROVED CONTRACTOR. A COPY OF THIS REPORT SHALL ALSO BE PROVIDED TO THE LL PRIOR TO CLOSEOUT.
  - PER 2019 CALIFORNIA MECHANICAL CODE WHEN REQUIRED, EACH SINGLE SYSTEM PROVIDING HEATING OR COOLING AIR IN EXCESS OF 2000 CUBIC FEET PER MINUTE SHALL BE EQUIPPED WITH AN AUTOMATIC SHUTOFF. AUTOMATIC SHUTOFF SHALL BE ACCOMPLISHED BY INTERRUPTING THE POWER SOURCE OF THE AIR MOVING EQUIPMENT DEVICES WHICH WILL DETECT PRODUCTS OF COMBUSTION OTHER THAN HEAT, AND WHICH COMPLY WITH THE IBC, SHALL BE LABELED BY AN APPROVED AGENCY FOR AIR DUCT INSTALLATION AND SHALL BE INSTALLED IN ACCORDANCE WITH THE MANUFACTURER'S INSTALLATION INSTRUCTIONS. SUCH DEVICES SHALL BE COMPATIBLE WITH THE OPERATING VELOCITIES, PRESSURES, TEMPERATURES AND HUMIDITIES OF THE SYSTEM WHERE FIRE DETECTION OR ALARM SYSTEMS ARE PROVIDED FOR THE BUILDING, SMOKE DETECTORS SHALL BE SUPERVISED BY SUCH SYSTEMS.
  - MECHANICAL CONTRACTOR SHALL BE ON SITE AND PRESENT AT THE DATE OF STORE TURNOVER.

**THE DIMENSION GROUP**  
 10755 SANDHILL ROAD  
 DALLAS, TEXAS 75238  
 O. 214-343-9400  
 dimensiongrp.com

03/17/2021

REVISIONS

THESE DRAWINGS AND SPECIFICATIONS OF TSUKURU USE ALL INFORMATION CONTAINED HEREIN. THIS IS RESTRICTED FOR USE ONLY ON THE PROJECT IDENTIFIED HEREIN. FEDERAL LAW PROHIBITS THE REPRODUCTION, SALE OR OTHER DISSEMINATION OF THESE DRAWINGS WITHOUT THE EXPRESSED WRITTEN PERMISSION OF TSUKURU. THESE DRAWINGS AND SPECIFICATIONS SHALL CONSTITUTE PRIMA FACIE EVIDENCE OF THE ACCEPTANCE OF THESE RESTRICTIONS.

03/22/2021

**KURA SUSHI**  
 3251 20TH AVE,  
 SAN FRANCISCO, CA 94132

OWNER / TENANT

**KURA**  
 REVOLVING SUSHI BAR

DRAWING TITLE  
**MECHANICAL SCHEDULES**

PROJECT MGR. TH DATE 03/22/2021 DRAWN BY CS SHEET NUMBER

**M2.0**

CITY CLIENT COMMENTS 03/17/2021

REVISIONS

THESE DRAWINGS AND SPECIFICATIONS ARE THE PROPERTY OF TSUKURU USA. ALL INFORMATION CONTAINED HEREIN IS RESTRICTED FOR USE ONLY ON THE PROJECT AND SITE SPECIFICALLY IDENTIFIED HEREIN. REPRODUCTION, SALE OR OTHER USE WITHOUT THE EXPRESS WRITTEN PERMISSION OF TSUKURU USA IS PROHIBITED. THESE DRAWINGS AND SPECIFICATIONS SHALL CONSTITUTE PRIMA FACIE EVIDENCE OF THE ACCEPTANCE OF THESE RESTRICTIONS.



**KURA SUSHI**  
 3251 20TH AVE,  
 SAN FRANCISCO, CA 94132

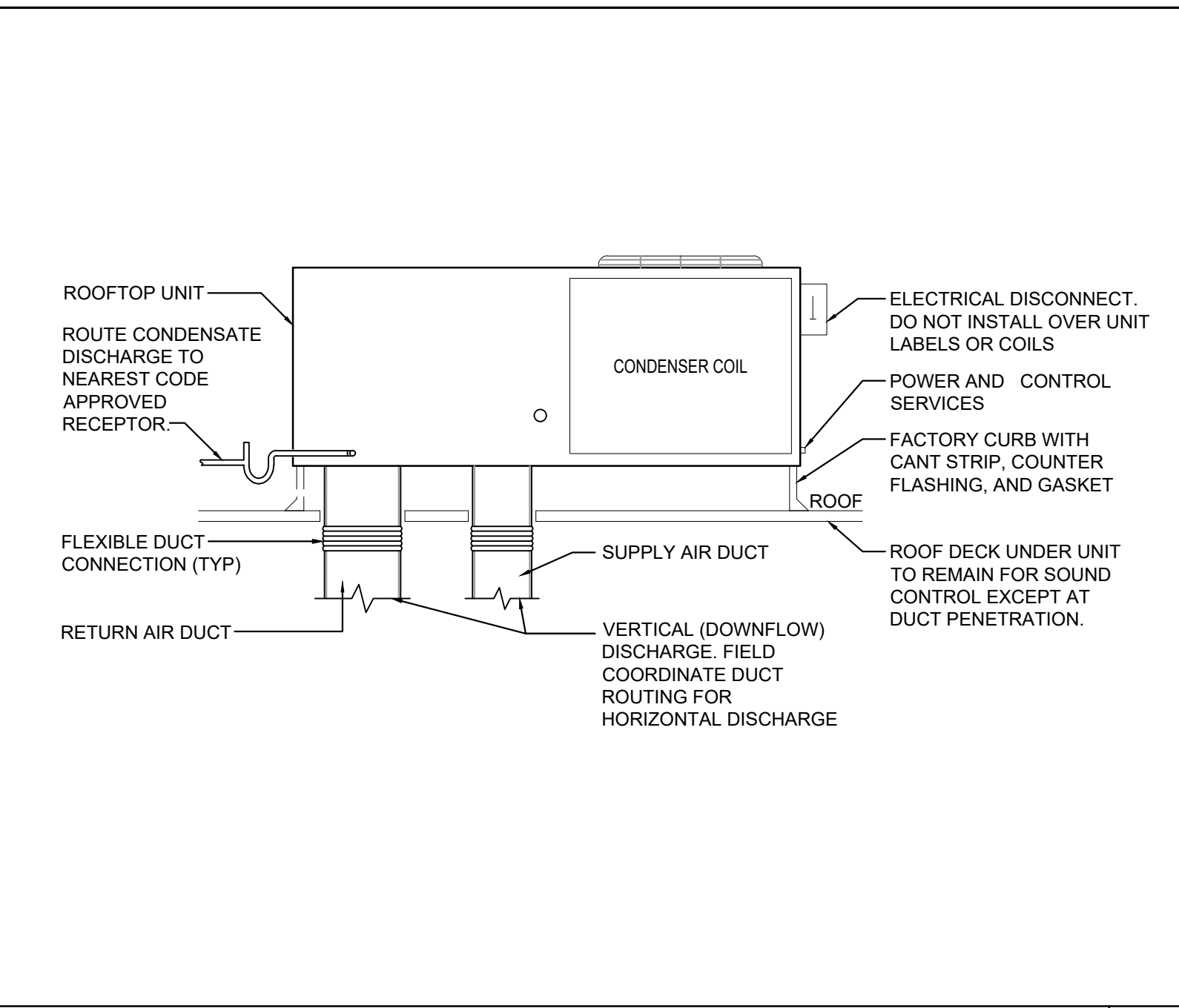
OWNER / TENANT



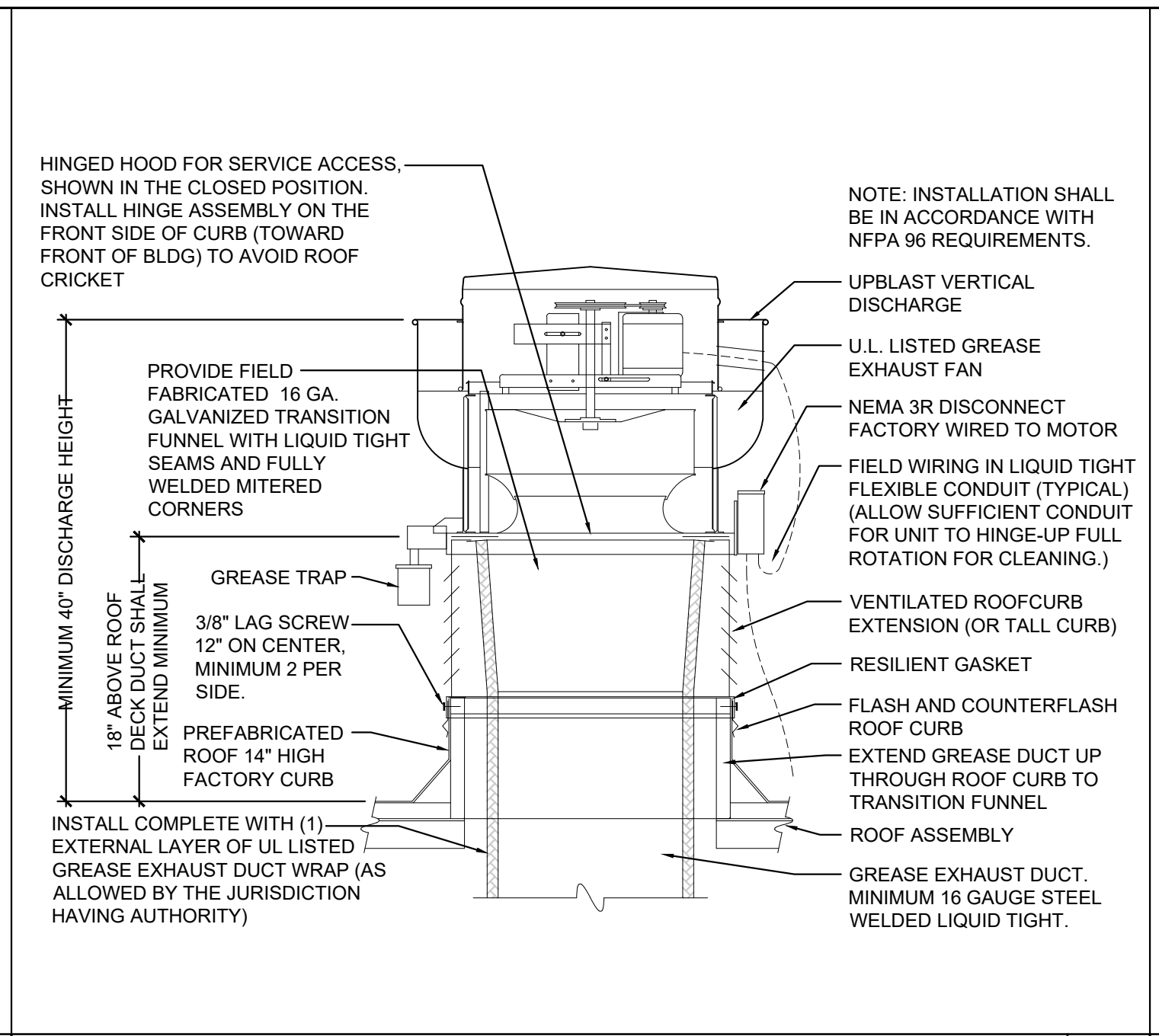
DRAWING TITLE  
**MECHANICAL DETAILS**

PROJECT MGR. TH  
 SCALE DATE DRAWN BY  
 SEE SHEET 03/22/2021 CS  
 SHEET NUMBER

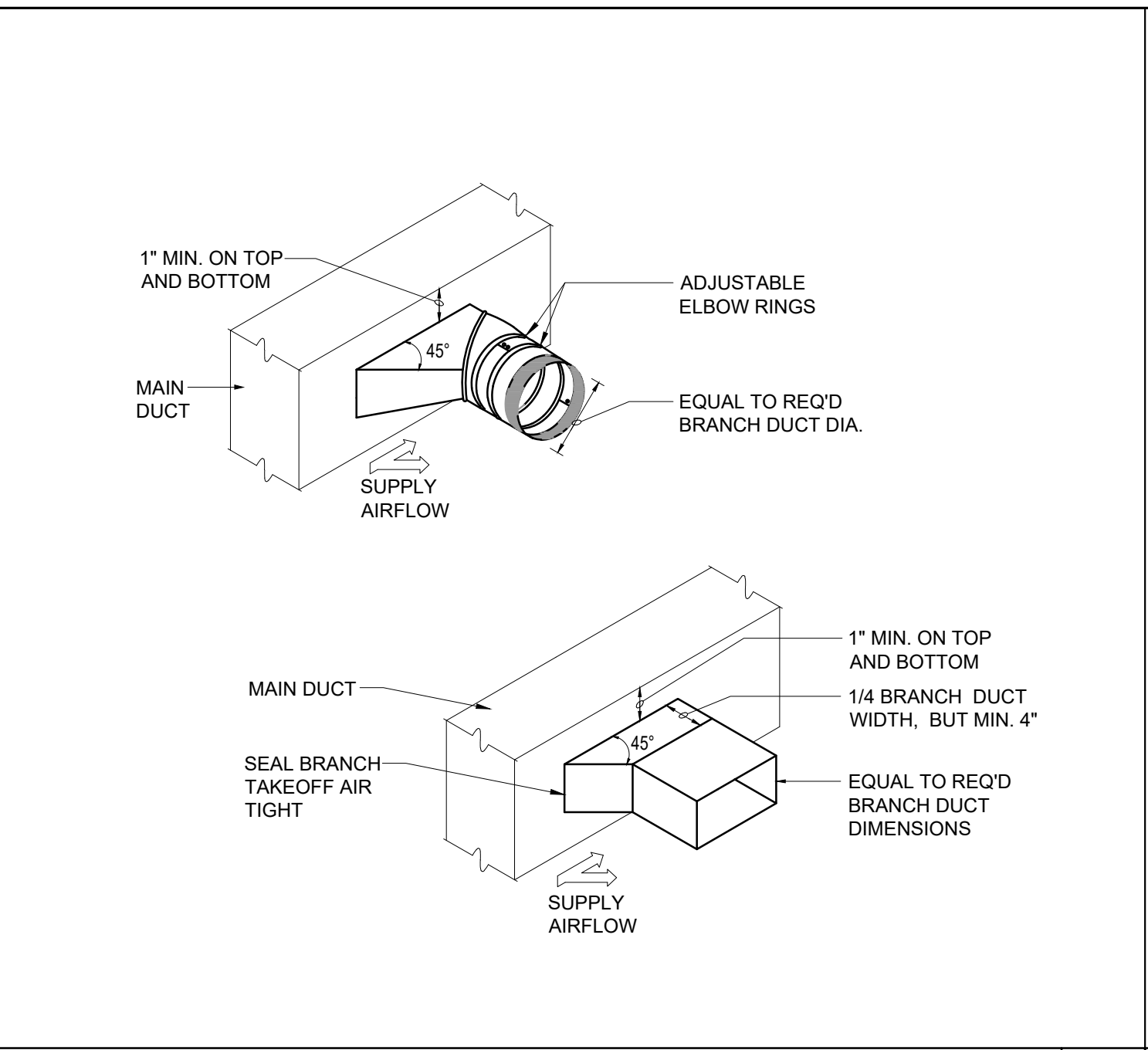
**M3.0**



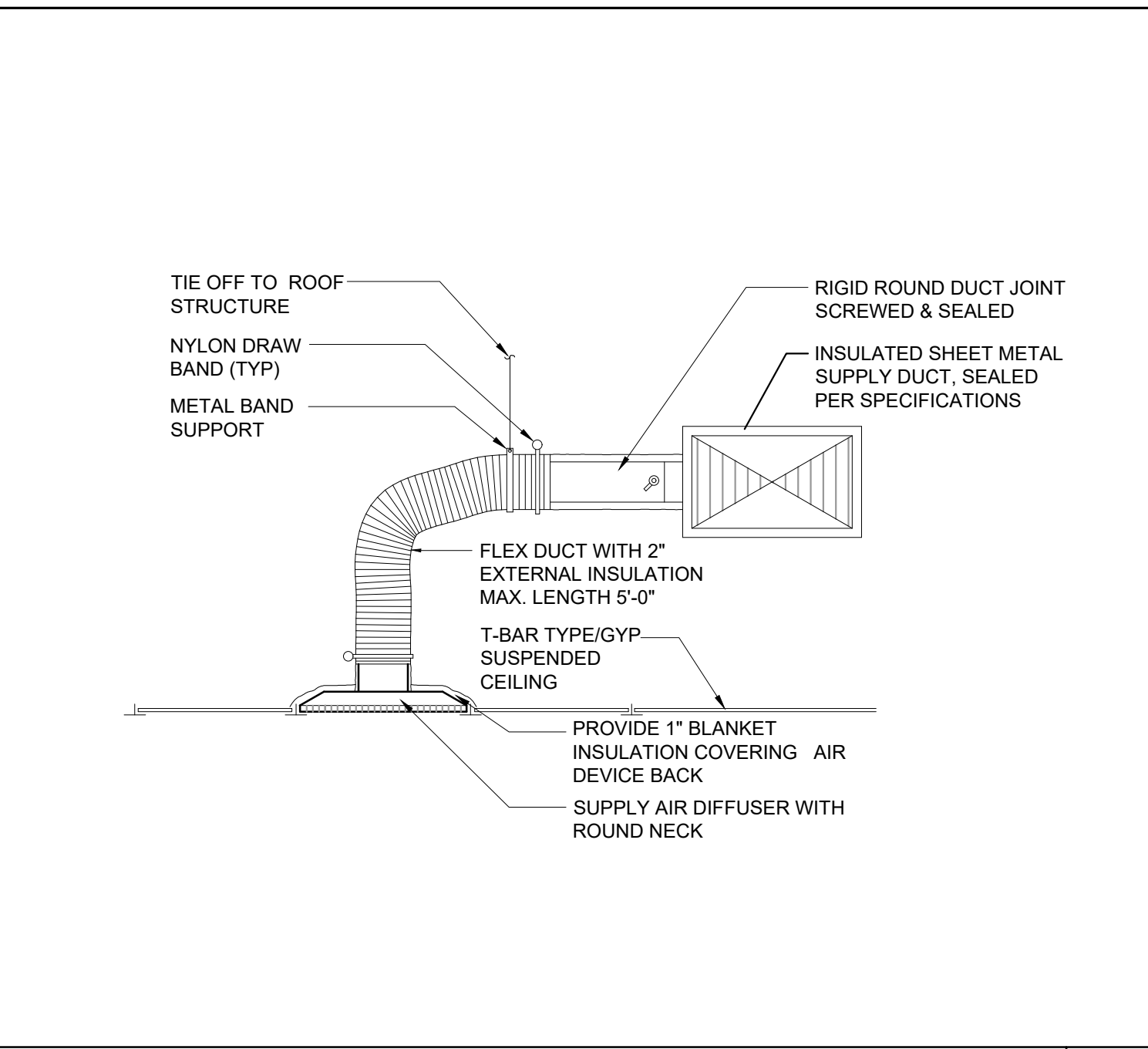
**ROOFTOP UNIT DETAIL**  
 SCALE: NONE 1



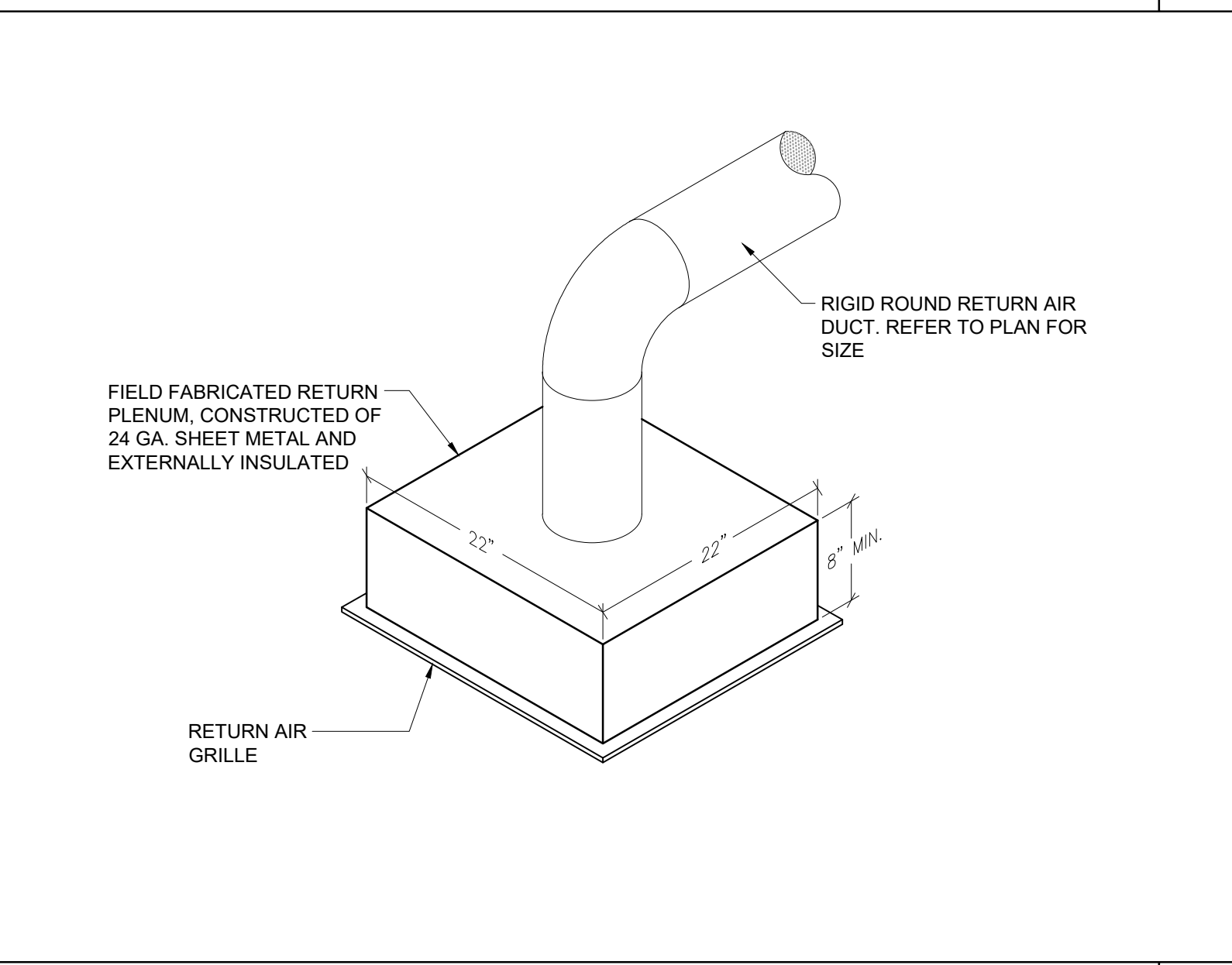
**KITCHEN UPBLAST GREASE EXHAUST FAN DETAIL**  
 SCALE: NONE 2



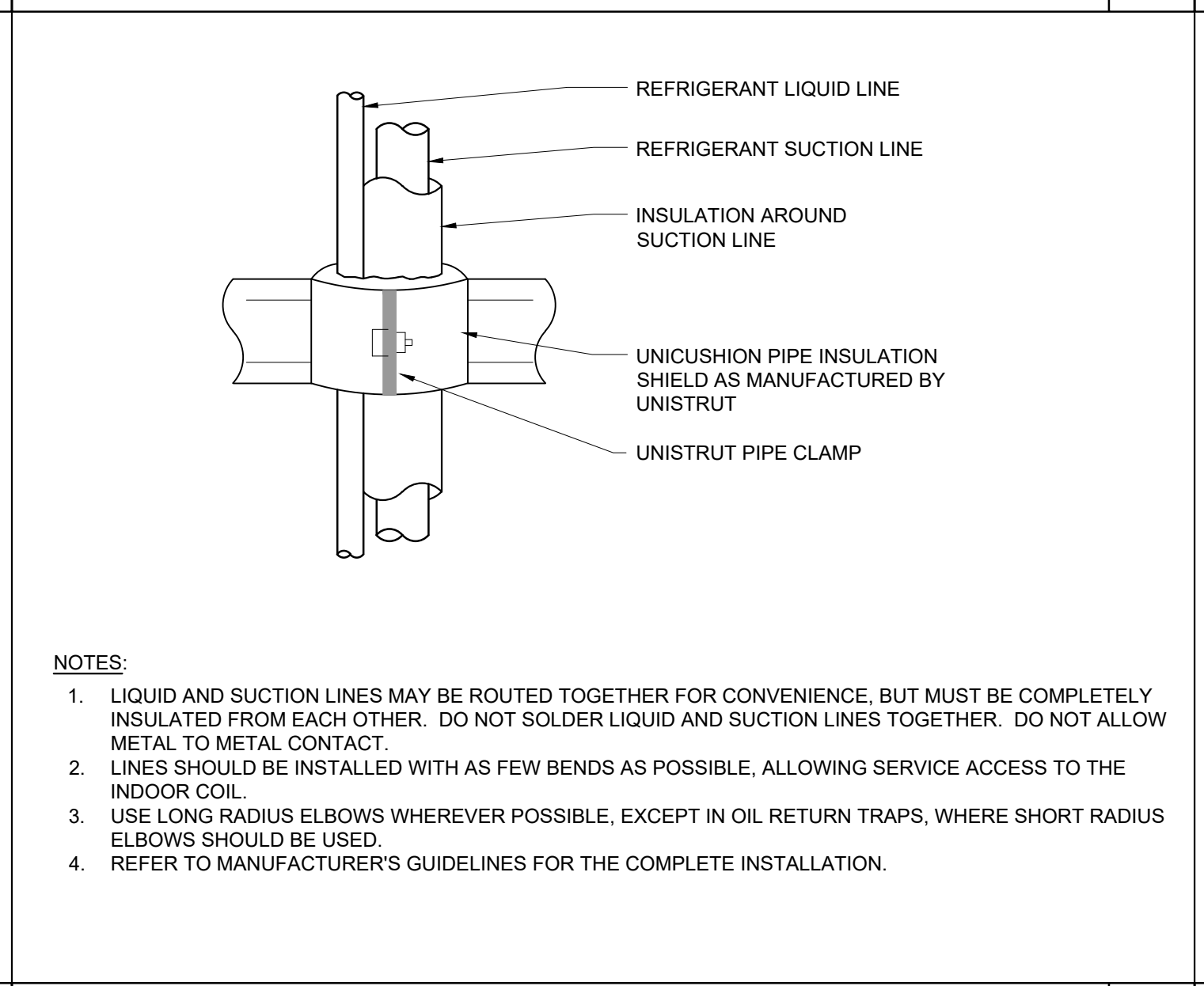
**BRANCH TAKE-OFF FITTING DETAIL**  
 SCALE: NONE 3



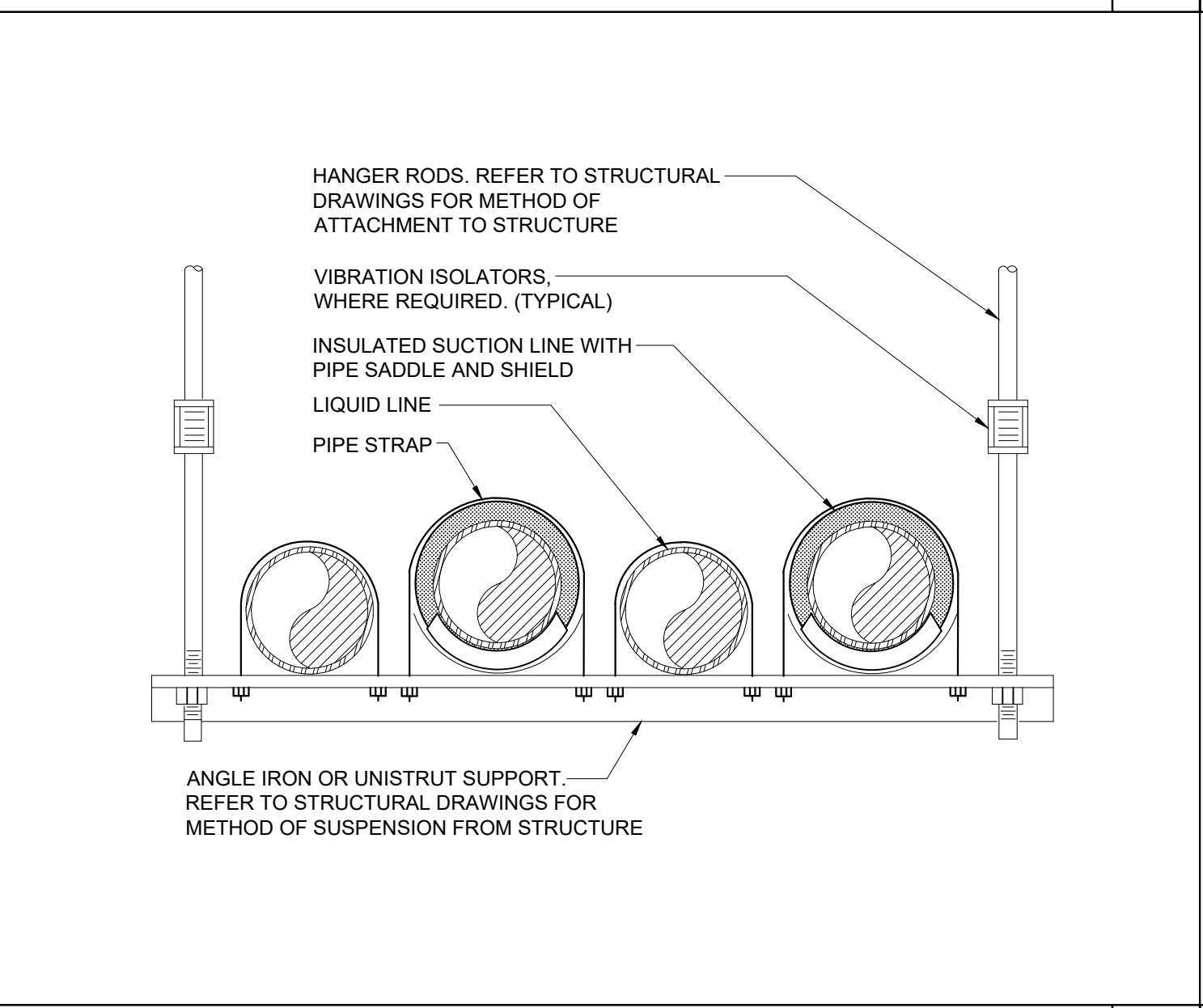
**CEILING MOUNTED SUPPLY AIR DIFFUSER DETAIL**  
 SCALE: NONE 4



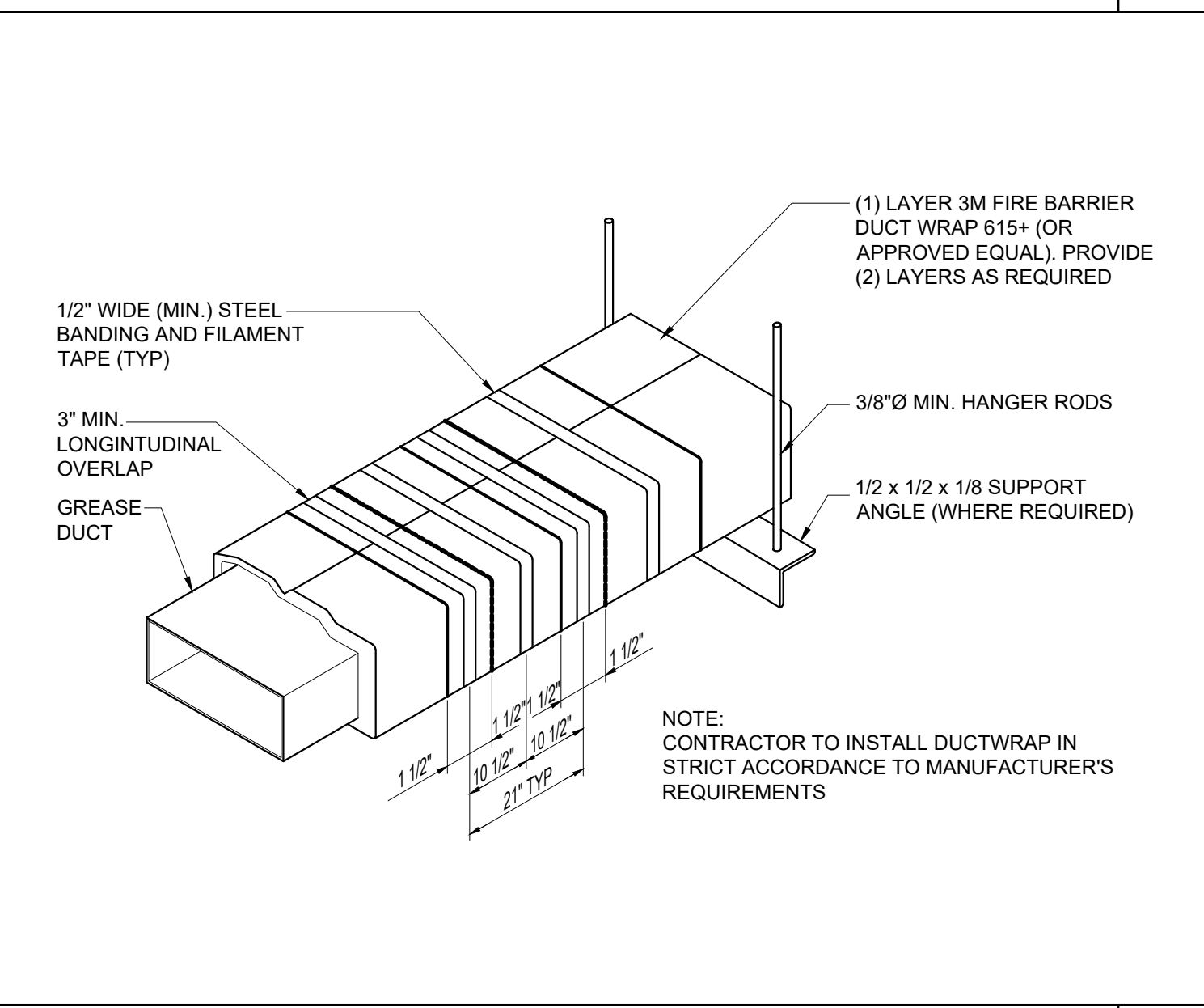
**CEILING MNTD. RETURN AIR GRILLE DETAIL**  
 SCALE: NONE 5



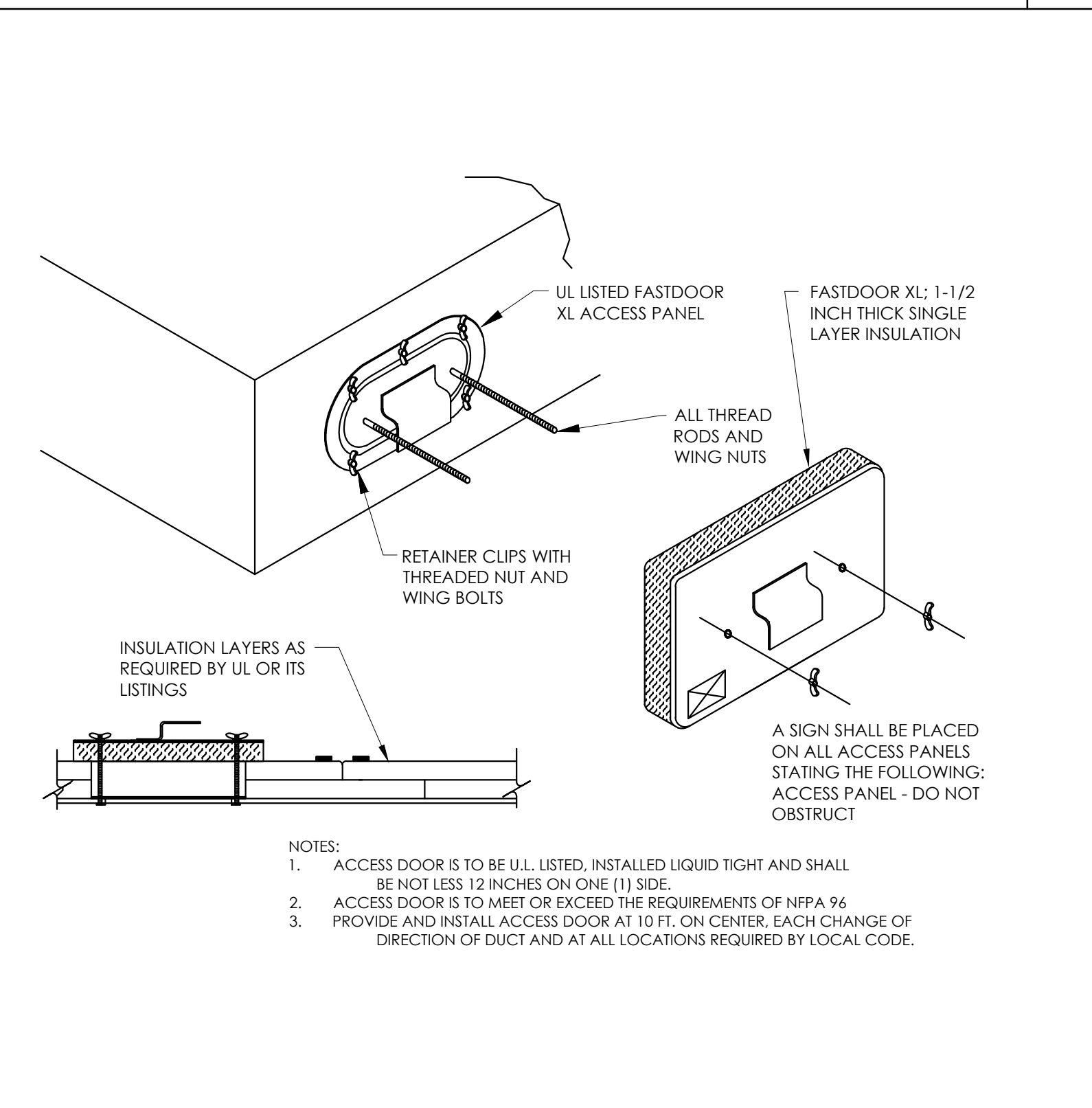
**VERTICAL REFRIGERANT PIPE SUPPORT DETAIL**  
 SCALE: NONE 6



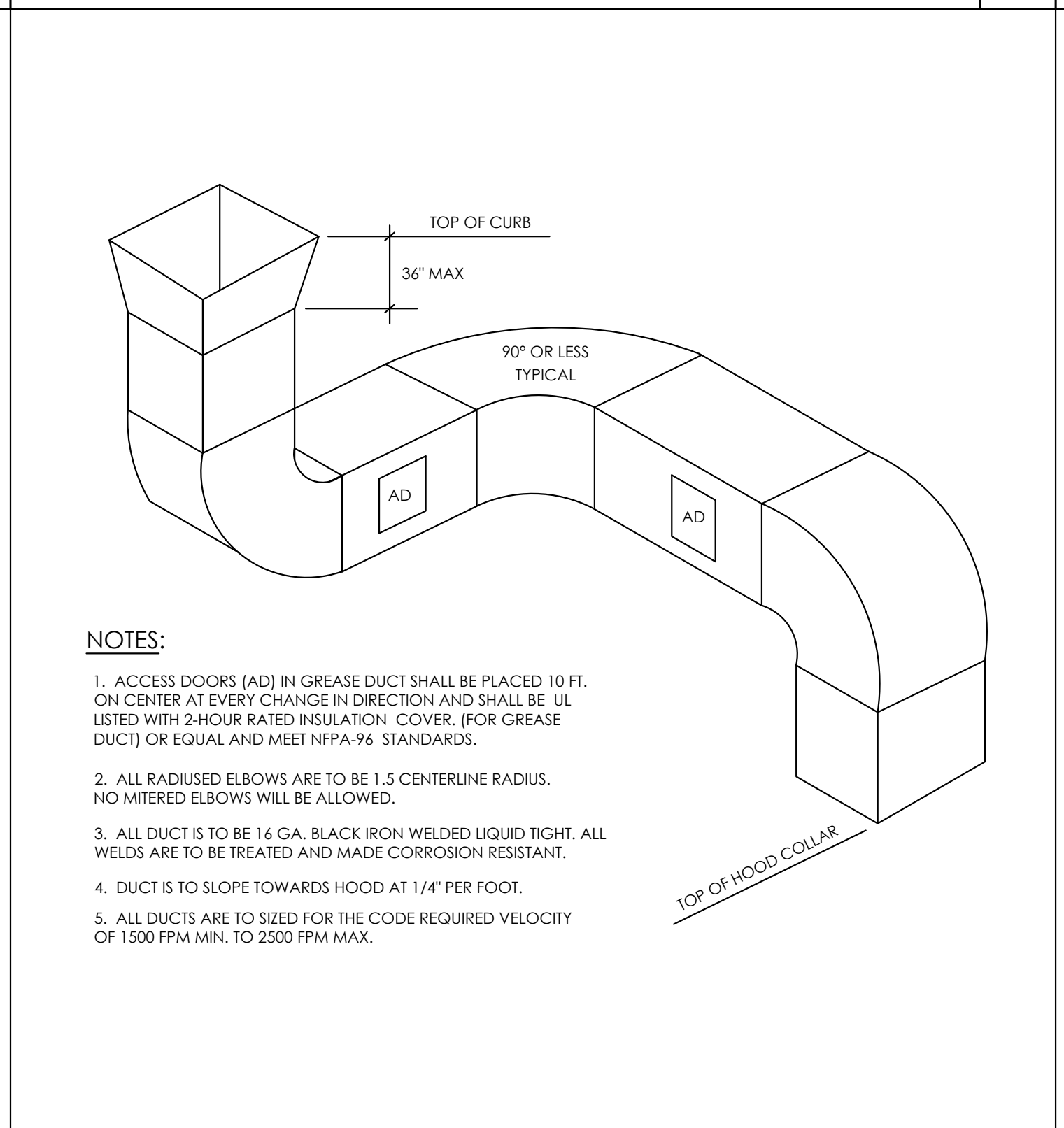
**HORIZONTAL REFRIGERANT PIPE SUPPORT DETAIL**  
 SCALE: NONE 7



**UL LISTED GREASE EXHAUST DUCT WRAP DETAIL**  
 SCALE: NONE 8



**GREASE EXHAUST DUCT ACCESS DOOR DETAIL**  
 SCALE: NONE 9



**GREASE EXHAUST DUCT ROUTING DETAIL**  
 SCALE: NONE 10



**NOT USED**  
 SCALE: NONE 11



**NOT USED**  
 SCALE: NONE 12

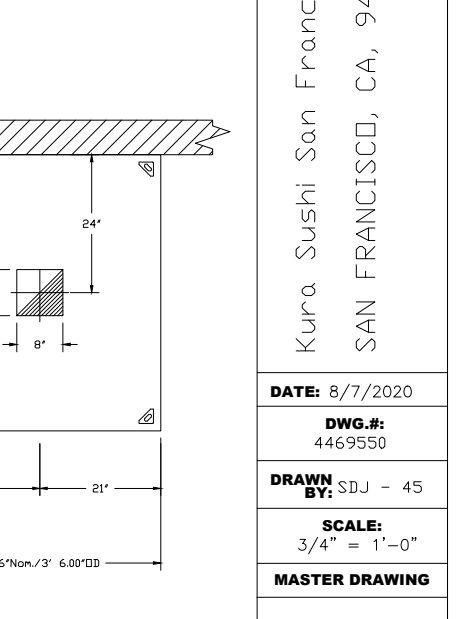
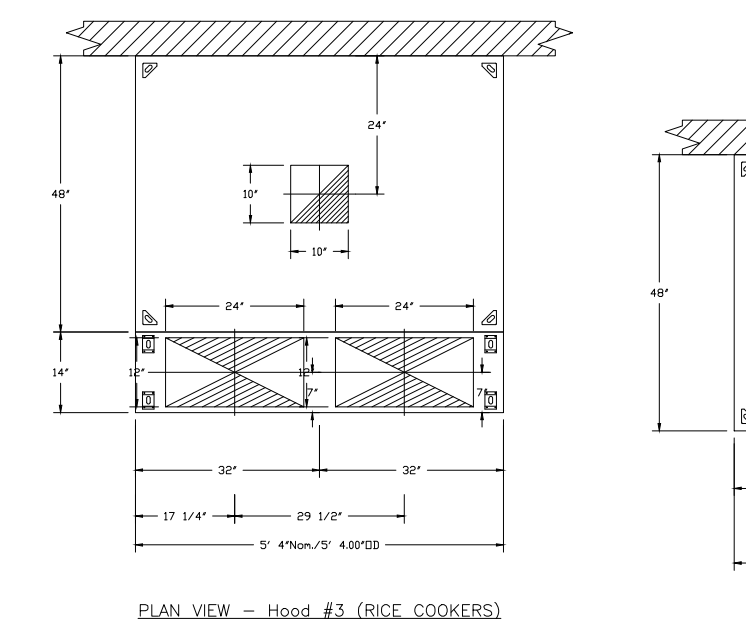
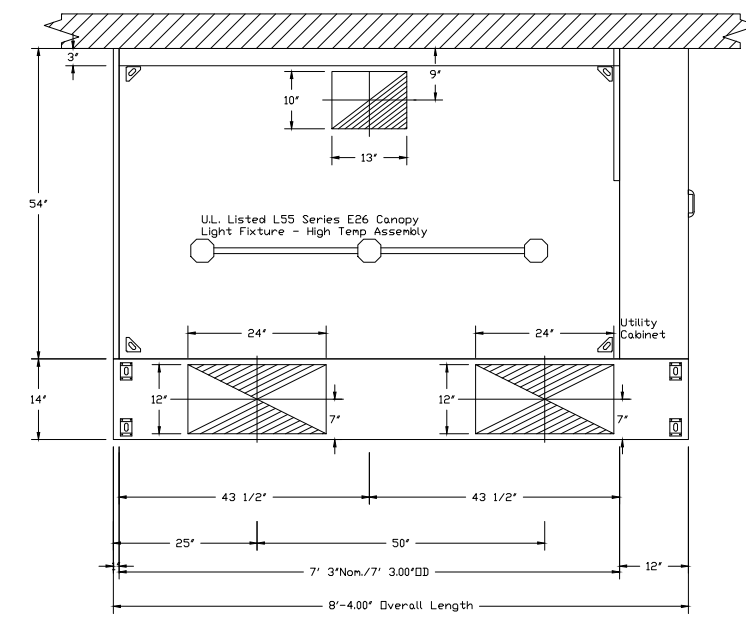
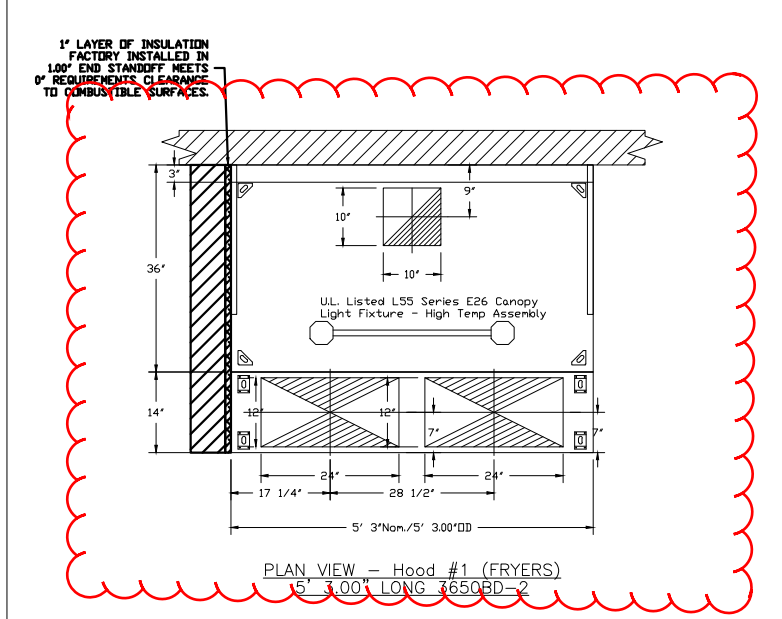


HOOD INFORMATION - Job#4468550																
HOOD NO	TAG	MODEL	LENGTH	MAX. HOODING TEMP	APPL. TYPE	DESIGN CAP/FM	TOTAL CFM	EXHAUST FLOW				TOTAL SUPPLY CFM	NEED CONTRACTOR END TO END	NEED CONTRACTOR END TO END		
								WIDTH	HEIGHT	SEA	CFM				VEL	SP
1	FRYERS	3600	7' 3"	400	Heavy	200	1000	10'	10'	4"	3550	1510	-0.76F	0	430 SS	ALDNE
2	RANGE / NOODLE	3600	7' 3"	400	Heavy	200	1000	10'	10'	4"	3550	1510	-0.76F	0	430 SS	ALDNE
3	RICE COOKERS	3600	7' 3"	400	Heavy	200	1000	10'	10'	4"	3550	1510	-0.76F	0	430 SS	ALDNE
4	DISH	3600	7' 3"	400	Heavy	200	1000	10'	10'	4"	3550	1510	-0.76F	0	430 SS	ALDNE
5	FRYER PSP	3600	7' 3"	400	Heavy	200	1000	10'	10'	4"	3550	1510	-0.76F	0	430 SS	ALDNE

HOOD INFORMATION																	
HOOD NO	TAG	TYPE	QTY	HEIGHT	LENGTH	EFFICIENCY # 7	QTY	TYPE	LOCATION	SIZE	TYPE	ELECTRICAL MODEL #	QUANTITY	F. HRS	HEED SYSTEM/WEIGHT		
																SIZE	TYPE
1	FRYERS	Captrate Solo Filter	3	16"	16"	85% See Filter	2	L55 Series E06	NO					1.5hp/1	YES	226 LBS	
2	RANGE / NOODLE	Captrate Solo Filter	5	20"	16"	85% See Filter	3	L55 Series E06	NO	Right	12"x4"x24"	Arzul R102	35/30	DCV-311	1 Fan	NO	242 LBS
3	RICE COOKERS															NO	175 LBS
4	DISH															NO	93 LBS
5	FRYER PSP															NO	93 LBS

HOOD OPTIONS	
HOOD NO	TAG
1	FRYERS
2	RANGE / NOODLE
3	RICE COOKERS
4	DISH
5	FRYER PSP

PRE-INSTALLED SUPPLY PLUMBING													
HOOD NO	TAG	POS	LENGTH	WIDTH	HEIGHT	TYPE	LENGTH	DIAMETER	SP				
2	RANGE / NOODLE	Front	100"	14"	6"	MUA	12"	24"	662	0.030"			
3	RICE COOKERS	Front	64"	14"	6"	MUA	12"	24"	450	0.030"			
5	FRYER PSP	Front	63"	14"	6"	MUA	12"	24"	585	0.030"			



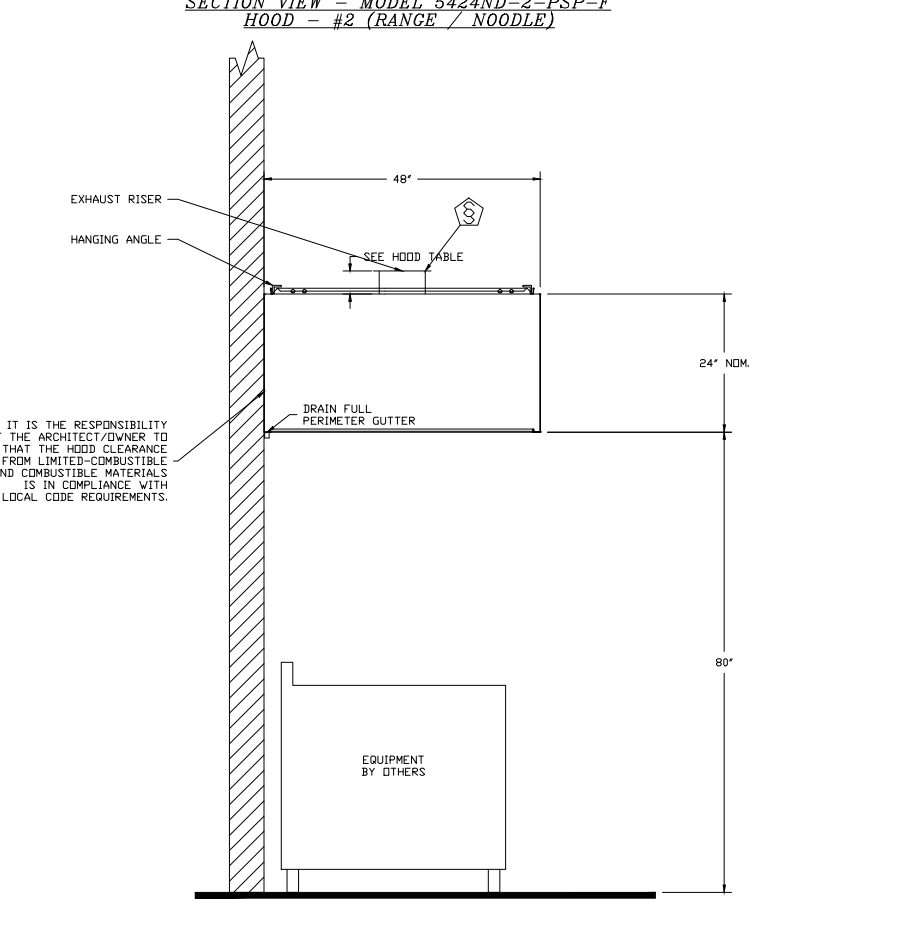
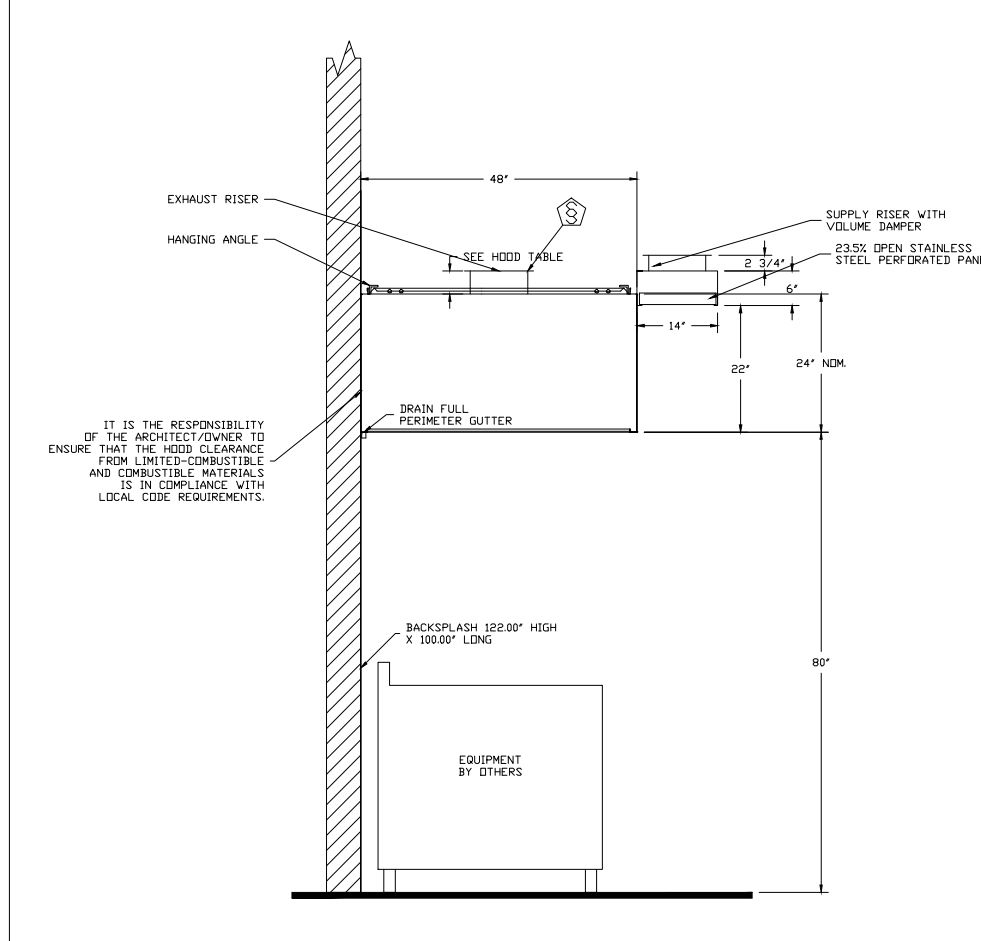
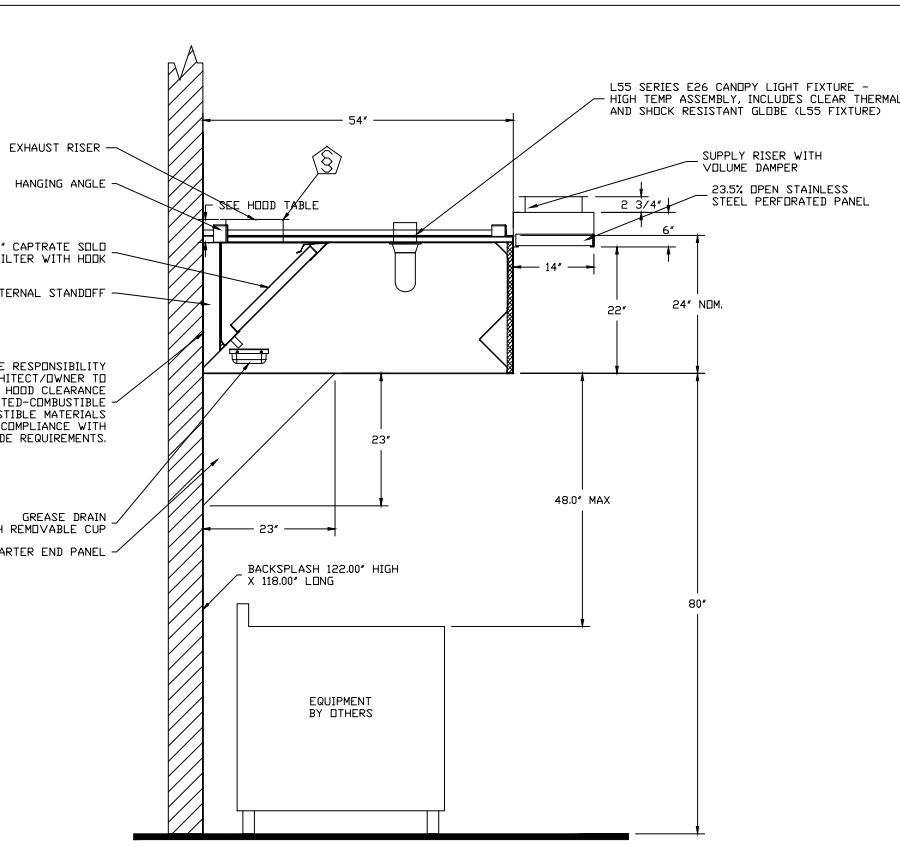
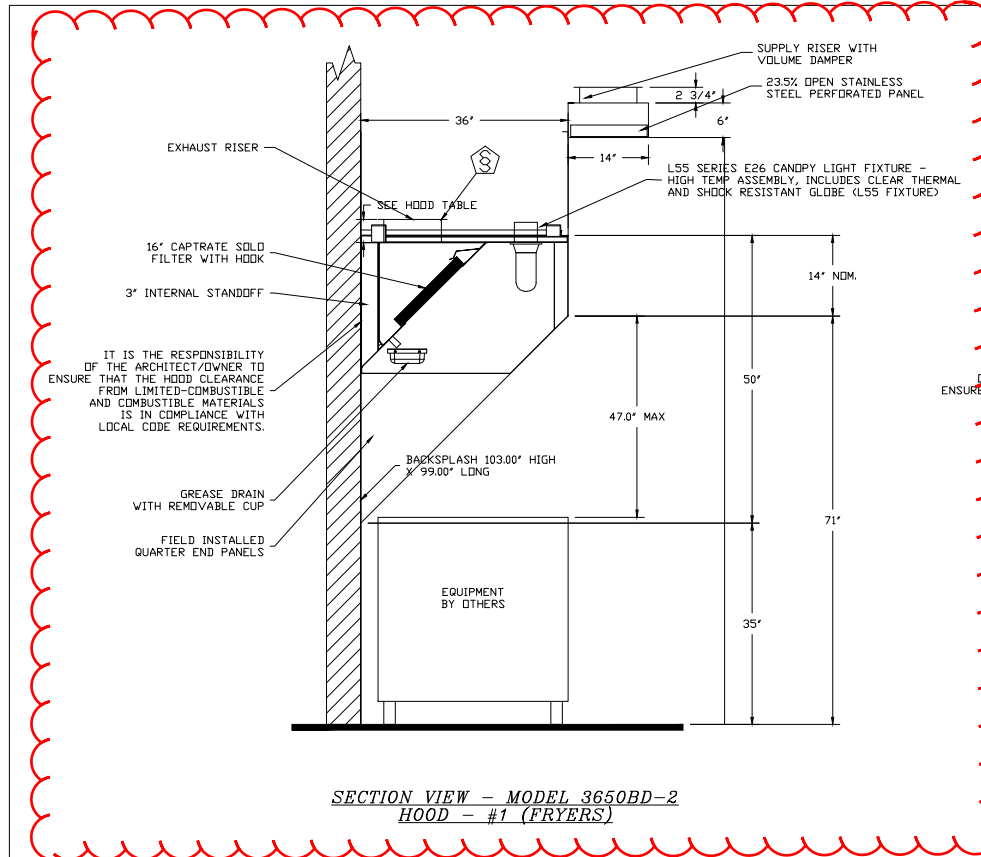
**REVISIONS**

**CAPTIVE LINE**

Kura Sushi San Francisco CA  
SAN FRANCISCO, CA, 94132

DATE: 8/7/2020  
DWG.#: 4468550  
DRAWN BY: SDJ - 45  
SCALE: 3/4" = 1'-0"  
MASTER DRAWING

SHEET NO. 1



**REVISIONS**

**CAPTIVE LINE**

Kura Sushi San Francisco CA  
SAN FRANCISCO, CA, 94132

DATE: 8/7/2020  
DWG.#: 4468550  
DRAWN BY: SDJ - 45  
SCALE: 3/4" = 1'-0"  
MASTER DRAWING

SHEET NO. 2

EXHAUST FAN INFORMATION - Job#4468550															
FAN UNIT NO	TAG	QTY	FAN UNIT MODEL #	CFM	ESP	HP	MOTOR ENCL.	HP	BHP	#	VOLT	FLA	DISCHARGE VELOCITY	WEIGHT (LBS)	SDMS
1	KEF-1 (FRYERS)	1	BUSPFA	1050	1.250	0.268	TEAD-ECM 0.750 0.3600	1	208	5.2	238	2.38	88	13.8	
2	KEF-2 (RANGE/NOODLE)	1	BUSPFA	1400	1.000	0.268	TEAD-ECM 0.750 0.3600	1	208	5.2	459	2.38	98	13.7	
3	KEF-3 (RICE COOKERS)	1	BUSPFA	800	0.500	1.411	TEAD-ECM 0.533 0.1743	1	115	4.3	296	2.38	63	13.3	
4	KEF-4 (DISH)	1	BUSPFA	525	0.500	1.088	TEAD-ECM 0.533 0.1743	1	115	4.3	260	2.38	63	9.8	

MUA FAN INFORMATION - Job#4468550																			
FAN UNIT NO	TAG	QTY	FAN UNIT MODEL #	BLUVER	HOUSING	MIN. CFM	DESIGN CFM	ESP	HP	MOTOR ENCL.	HP	BHP	#	VOLT	FLA	MCA	MCP	WEIGHT (LBS)	SDMS
5	MAU-1	1	A2-D250-010	0PM-Q-MD	A2-D250	2000	3075	0.500	1.000	DDP/PREMIUM	2.000	1.2710	3	208	6.1	7.74	ISA	685	11.7

GAS FIRED MAKE-UP AIR UNITS													
FAN UNIT NO	TAG	INPUT BTUH	OUTPUT BTUH	TEMP. RISE	REQUIRED INPUT PRESSURE	GAS TYPE	BURNER EFFICIENCY						
5	MAU-1	128729	18445	34 Btu/F	7 in. w.c. - 14 in. w.c.	Natural	92						

FAN OPTIONS			
FAN UNIT NO	TAG	QTY	Description
1	KEF-1 (FRYERS)	1	Grease Box
2	KEF-2 (RANGE/NOODLE)	1	ECM Wiring Package - PWM Signal from ECMED Pressure (TELED) Motor, ECM Rotation
3	KEF-3 (RICE COOKERS)	1	ECM Wiring Package - PWM Signal from ECMED Pressure (TELED) Motor, ECM Rotation
4	KEF-4 (DISH)	1	ECM Wiring Package - PWM Signal from ECMED Pressure (TELED) Motor, ECM Rotation
5	MAU-1	1	16" Intertek Relay - 24VAC Coil 1 Motorize Backdraft Stopper For A2-D housing 1 Low Flow Stop 1 Stack Pressure Gauge 0-30" 1 Manifold Pressure Gauge -5 to 15" w.c. 1 Locking Interlock and Relay Stop (See Fan spec) 1 Separate 120V Wiring Package (Required and used only for DCV or Pressure with VFD) - These items only 1 3/4" Direct Fired Heater Low CFM Profile Package. Used on Heaters under 2500 CFM.

FAN ACCESSORIES			
FAN UNIT NO	TAG	EXHAUST CURB	SUPPLY CURB
1	KEF-1 (FRYERS)	YES	YES
2	KEF-2 (RANGE/NOODLE)	YES	YES
3	KEF-3 (RICE COOKERS)	YES	YES
4	KEF-4 (DISH)	YES	YES
5	MAU-1	YES	YES

CURB ASSEMBLIES				
NO	TAG	WEIGHT	ITEM	SIZE
1	KEF-1 (FRYERS)	36 LBS	Curb	23.00"V x 23.00"V x 28.00"V Right Vertical Hinged
2	KEF-2 (RANGE/NOODLE)	36 LBS	Curb	23.00"V x 23.00"V x 28.00"V Right Vertical Hinged
3	KEF-3 (RICE COOKERS)	27 LBS	Curb	19.50"V x 19.50"V x 23.00"V Right
4	KEF-4 (DISH)	27 LBS	Curb	19.50"V x 19.50"V x 23.00"V Right
5	MAU-1	80 LBS	Curb	30.00"V x 29.00"V x 28.00"V Right Insulated
6		37 LBS	Curb	26.50"V x 26.50"V x 28.00"V
7		24 LBS	Curb	23.00"V x 23.00"V x 28.00"V
8		32 LBS	Curb	23.00"V x 23.00"V x 28.00"V

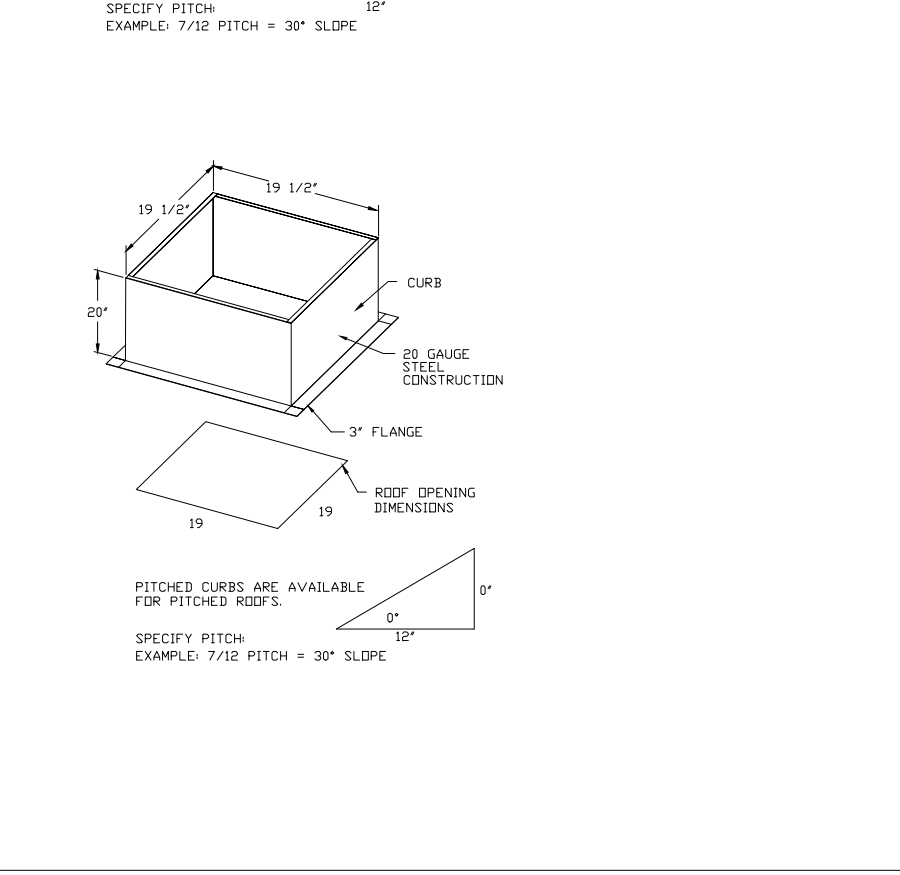
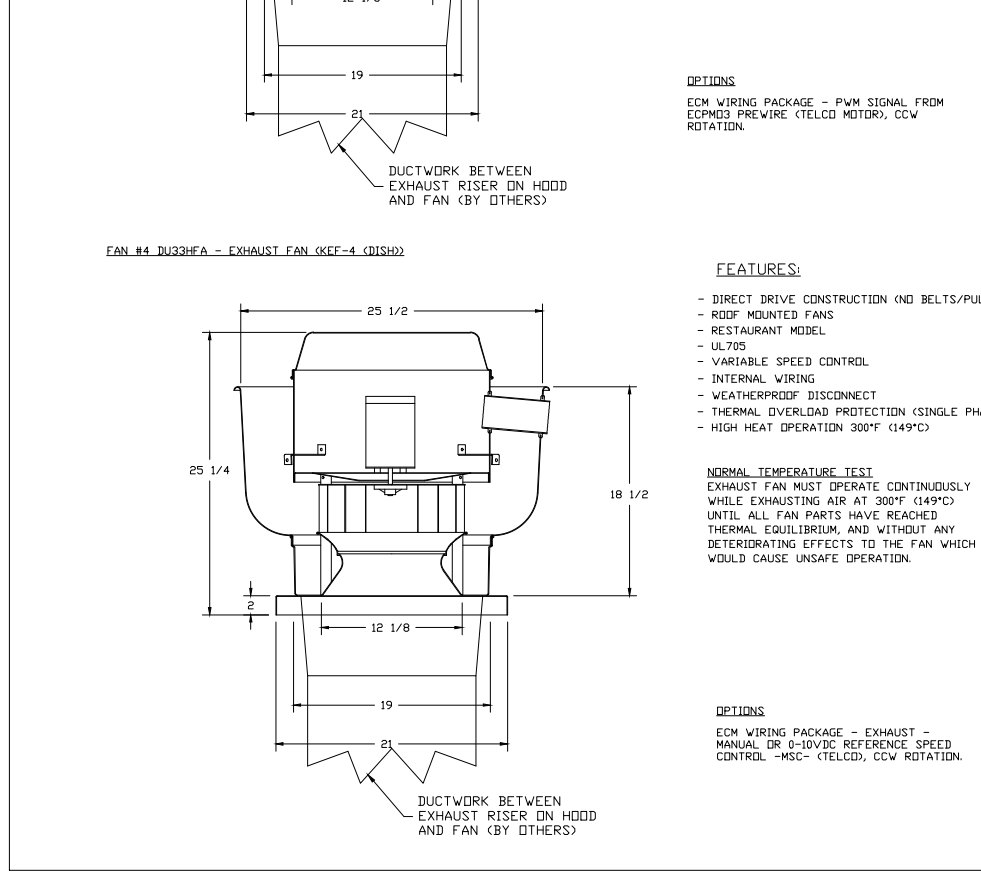
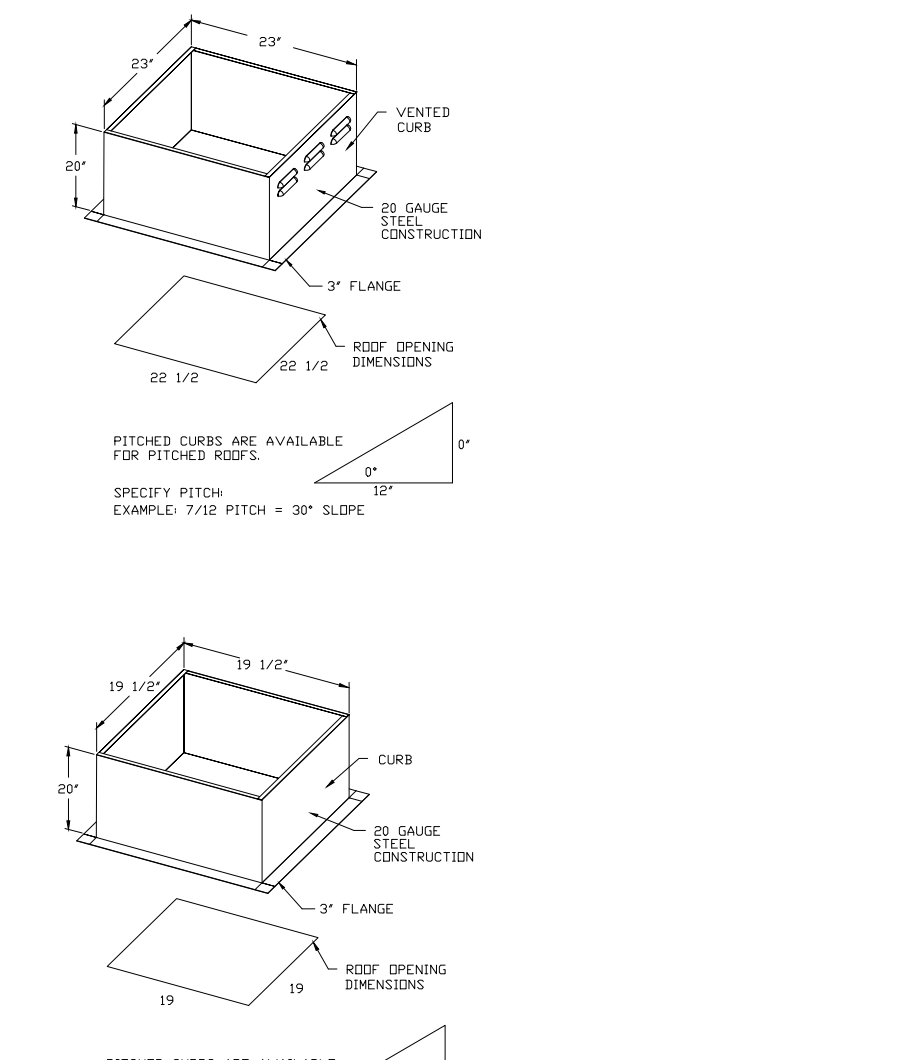
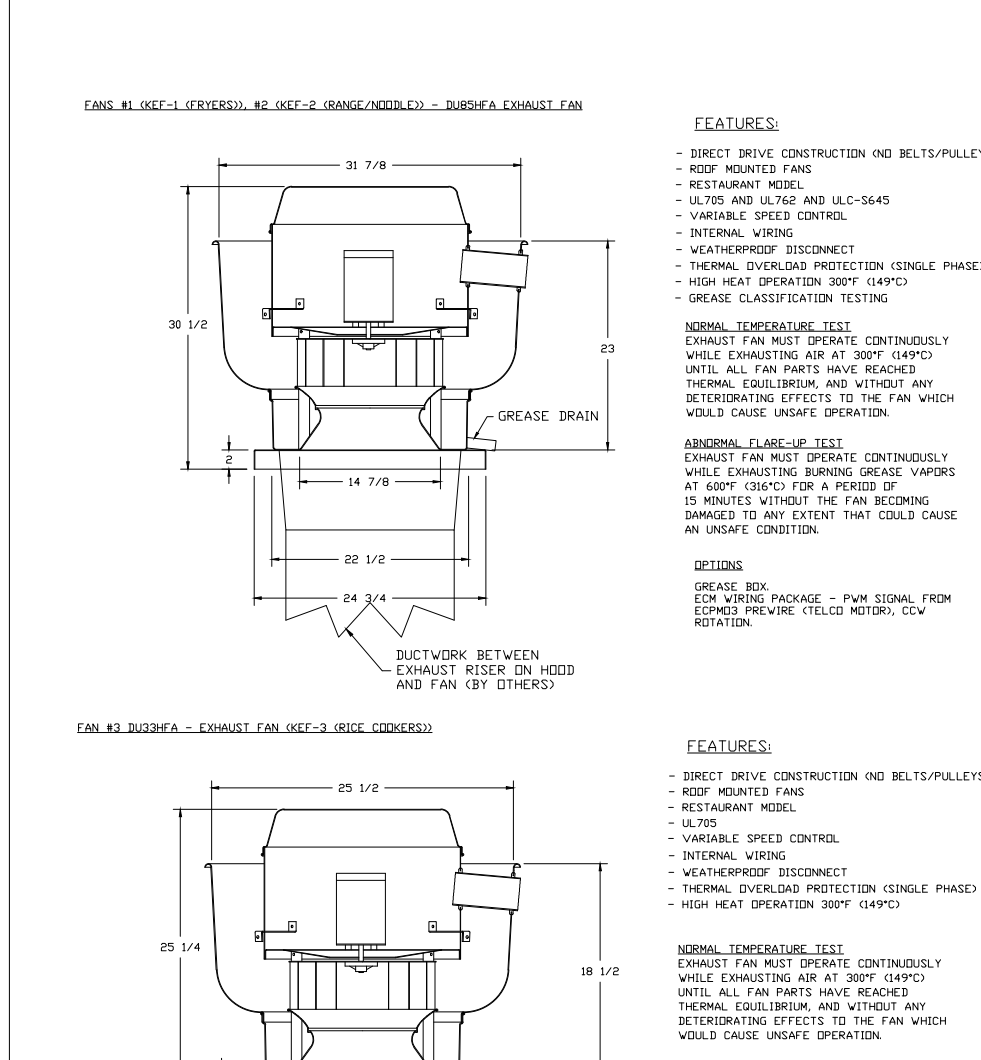
**REVISIONS**

**CAPTIVE LINE**

Kura Sushi San Francisco CA  
SAN FRANCISCO, CA, 94132

DATE: 8/7/2020  
DWG.#: 4468550  
DRAWN BY: SDJ - 45  
SCALE: 3/4" = 1'-0"  
MASTER DRAWING

SHEET NO. 4



**REVISIONS**

**CAPTIVE LINE**

Kura Sushi San Francisco CA  
SAN FRANCISCO, CA, 94132

DATE: 8/7/2020  
DWG.#: 4468550  
DRAWN BY: SDJ - 45  
SCALE: 3/4" = 1'-0"  
MASTER DRAWING

SHEET NO. 5

**THE DIMENSION GROUP**

10755 SANDHILL ROAD  
DALLAS, TEXAS 75238  
O. 214-343-9400  
dimensiongrp.com

CITY & CLIENT COMMENTS

03/17/2021

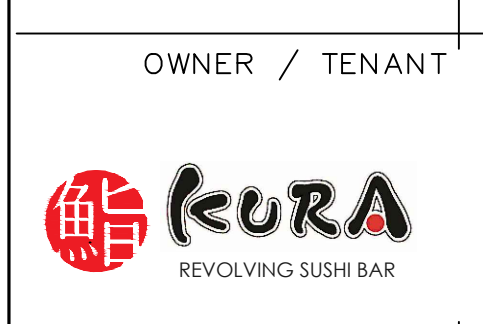
THESE DRAWINGS AND SPECIFICATIONS ARE THE PROPERTY OF CAPTIVE LINE. NO PARTS OF THESE DRAWINGS OR SPECIFICATIONS SHALL BE REPRODUCED OR TRANSMITTED IN ANY FORM OR BY ANY MEANS, ELECTRONIC OR MECHANICAL, WITHOUT THE EXPRESS WRITTEN PERMISSION OF CAPTIVE LINE. CAPTIVE LINE SHALL CONSTITUTE PRIMA FACIE EVIDENCE OF ACCEPTANCE OF THESE RESTRICTIONS.



03/22/2021

**KURA SUSHI**

3251 20TH AVE,  
SAN FRANCISCO, CA 94132



OWNER / TENANT

DRAWING TITLE  
**MECHANICAL HOOD DETAILS**

PROJECT MGR. TH

SCALE: SEE SHEET DATE: 03/22/2021 DRAWN BY: CS SHEET NUMBER

**M4.0**

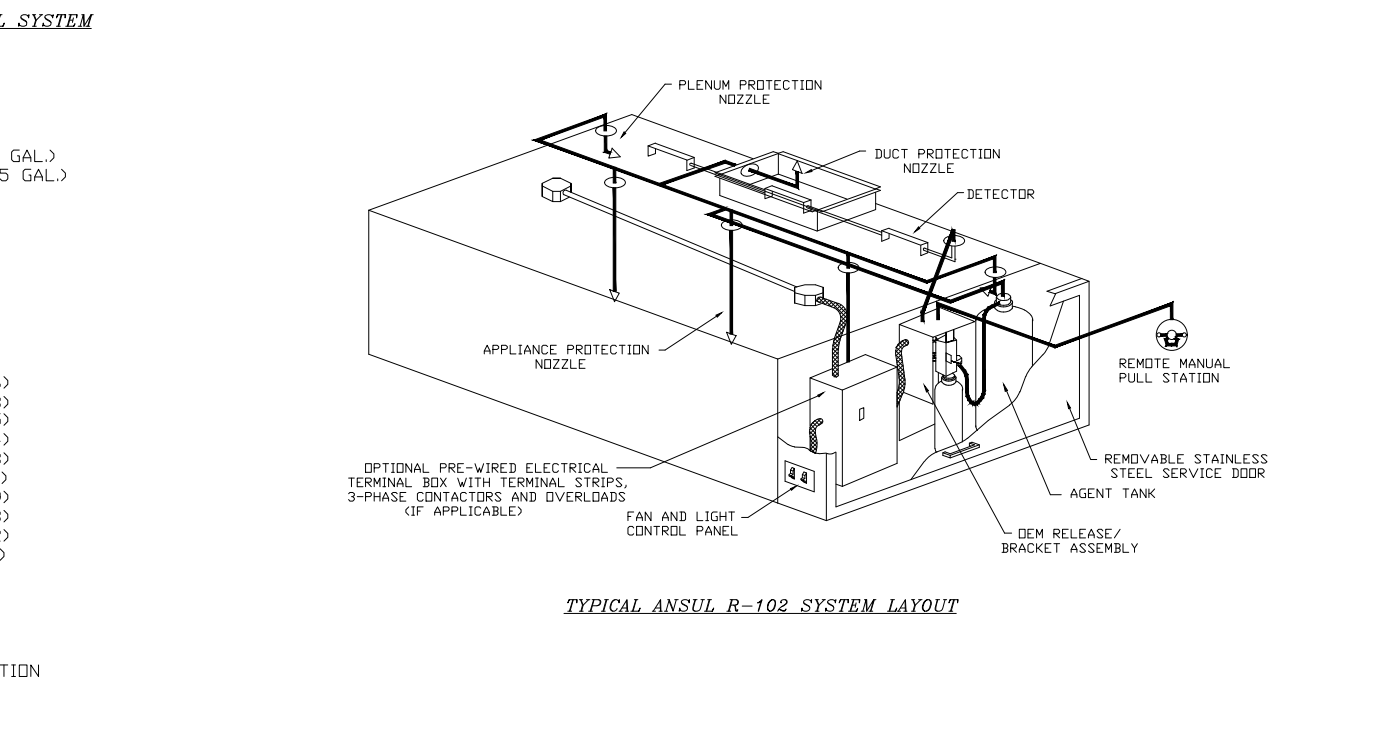
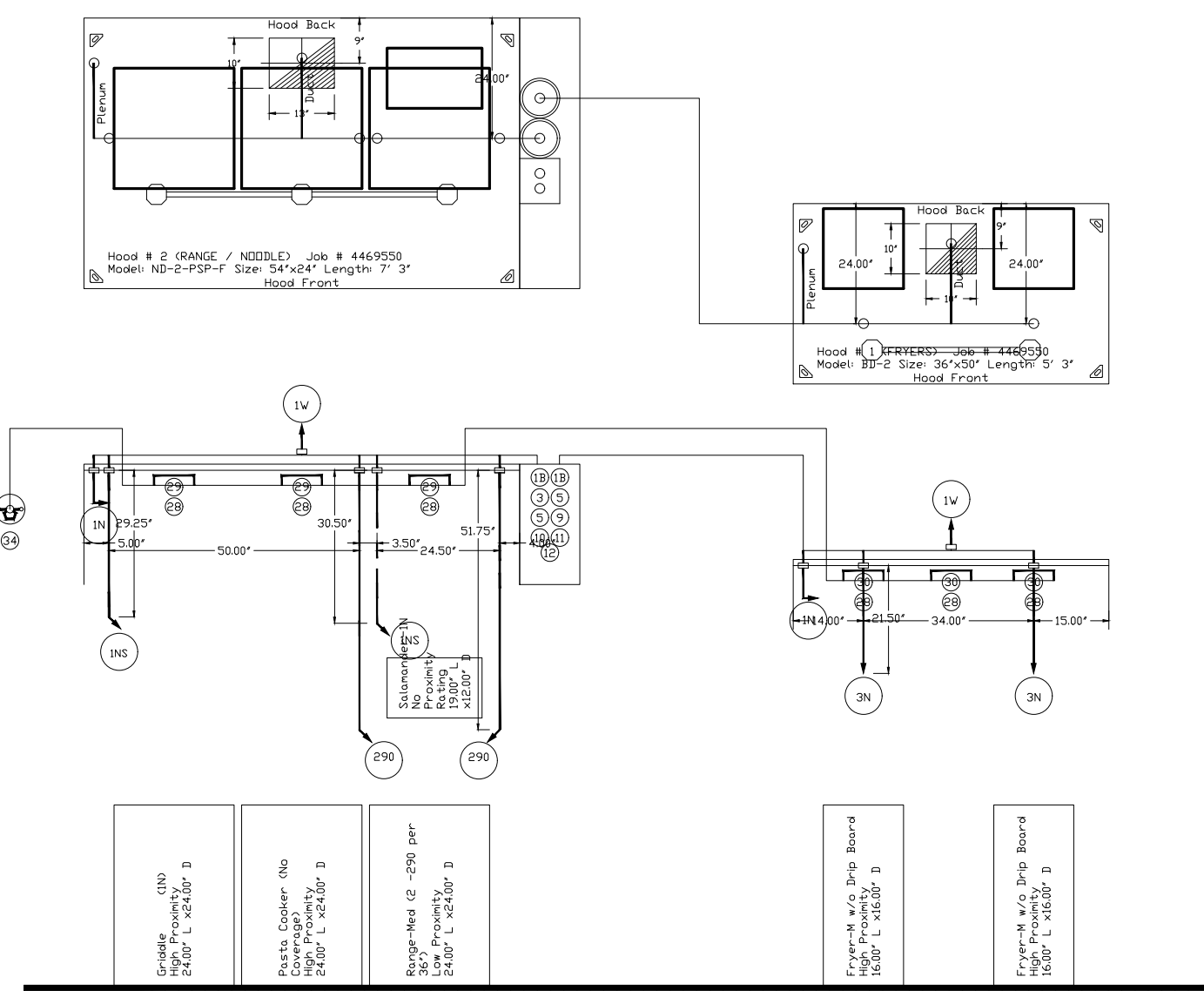
Fire System Tag	TYPE	SIZE	FLOW (GPM)	INSTALLATION	LOCATION ON HOOD
1	ANSUL RISER	3/2"Ø	15	Fire Cabinet Right	Right HOOD 2'

Fire System Tag	KEY NUMBER - PART DESCRIPTION	QTY BY FACTORY	QTY BY SITE
0	439961 Large BLOWOFF CAP. Metal, to fit New User=ANSUL Nozzle, ANSUL400	10	0
1	31-18 Chrome Plated Fire Nozzle 3/2" NPT 40 Inches Long	2	0
2	31-18 Chrome Plated Fire Nozzle 3/2" NPT 44 Inches Long	2	0
3	1/2" Low Temp Fusible Link - 300°F 1/2" x 1/2" x 1/2" x 1/2"	2	0
4	1/2" Low Temp Fusible Link - 300°F 1/2" x 1/2" x 1/2" x 1/2"	2	0
5	1/2" Low Temp Fusible Link - 300°F 1/2" x 1/2" x 1/2" x 1/2"	2	0
6	1/2" Low Temp Fusible Link - 300°F 1/2" x 1/2" x 1/2" x 1/2"	2	0
7	1/2" Low Temp Fusible Link - 300°F 1/2" x 1/2" x 1/2" x 1/2"	2	0
8	1/2" Low Temp Fusible Link - 300°F 1/2" x 1/2" x 1/2" x 1/2"	2	0
9	1/2" Low Temp Fusible Link - 300°F 1/2" x 1/2" x 1/2" x 1/2"	2	0
10	1/2" Low Temp Fusible Link - 300°F 1/2" x 1/2" x 1/2" x 1/2"	2	0
11	1/2" Low Temp Fusible Link - 300°F 1/2" x 1/2" x 1/2" x 1/2"	2	0
12	1/2" Low Temp Fusible Link - 300°F 1/2" x 1/2" x 1/2" x 1/2"	2	0
13	1/2" Low Temp Fusible Link - 300°F 1/2" x 1/2" x 1/2" x 1/2"	2	0
14	1/2" Low Temp Fusible Link - 300°F 1/2" x 1/2" x 1/2" x 1/2"	2	0
15	1/2" Low Temp Fusible Link - 300°F 1/2" x 1/2" x 1/2" x 1/2"	2	0
16	1/2" Low Temp Fusible Link - 300°F 1/2" x 1/2" x 1/2" x 1/2"	2	0
17	1/2" Low Temp Fusible Link - 300°F 1/2" x 1/2" x 1/2" x 1/2"	2	0
18	1/2" Low Temp Fusible Link - 300°F 1/2" x 1/2" x 1/2" x 1/2"	2	0
19	1/2" Low Temp Fusible Link - 300°F 1/2" x 1/2" x 1/2" x 1/2"	2	0
20	1/2" Low Temp Fusible Link - 300°F 1/2" x 1/2" x 1/2" x 1/2"	2	0
21	1/2" Low Temp Fusible Link - 300°F 1/2" x 1/2" x 1/2" x 1/2"	2	0
22	1/2" Low Temp Fusible Link - 300°F 1/2" x 1/2" x 1/2" x 1/2"	2	0
23	1/2" Low Temp Fusible Link - 300°F 1/2" x 1/2" x 1/2" x 1/2"	2	0
24	1/2" Low Temp Fusible Link - 300°F 1/2" x 1/2" x 1/2" x 1/2"	2	0
25	1/2" Low Temp Fusible Link - 300°F 1/2" x 1/2" x 1/2" x 1/2"	2	0
26	1/2" Low Temp Fusible Link - 300°F 1/2" x 1/2" x 1/2" x 1/2"	2	0
27	1/2" Low Temp Fusible Link - 300°F 1/2" x 1/2" x 1/2" x 1/2"	2	0
28	1/2" Low Temp Fusible Link - 300°F 1/2" x 1/2" x 1/2" x 1/2"	2	0
29	1/2" Low Temp Fusible Link - 300°F 1/2" x 1/2" x 1/2" x 1/2"	2	0

INCLUDED FIELD INSTALLATION AND HOOD SPRING NORMAL BUSINESS HOURS BY CERTIFIED INSTALLERS ONLY IN THE LOCATION NOTED ABOVE. TWO SITE VISITS ONE VISIT TO SET PIPING AND SYSTEM TESTS. ADDITIONAL VISITS FOR THE HOOD AND GAS VALVE VISITS WILL BE IN ADDITION TO THE VISITS FOR THE HOOD AND GAS VALVE VISITS AT A MINIMUM SIZE OF 10' x 10' WITH A MINIMUM OF TWO VISITS. VISITS WILL BE SCHEDULED BY THE USER UNDER LABOR & PREPARING WARE & VESSELS WILL BE MADE BY THE USER. HOODS OF APPLICABLE SIZE AND POSITIONING ELECTRICAL, HOOD AND CONNECTIONS, WIRING OF FIRE CABINET, SHUNT TRIP, HANDLES, CONTROLS, DISCRETE RE-PIPEING DUE TO EQUIPMENT LAYOUT CHANGES.

Job # 4469550  
Job Name Kura Sushi San Francisco CA  
System Size ANSUL-30/30 Total FP required 16  
HOOD # 1 1' 3"Ø 10' High  
Riser # 1 3/2"Ø 10' High  
HOOD # 2 7' 3"Ø 10' High  
Riser # 2 1"Ø 10' High



**NOTES**

- FIELD PIPE DROPS AS SHOWN
- SELECTED HOODS AND NOZZLES SUPPLIED BY GAS
- RELOCATE NOZZLES IF FLOW PATTERN IS BLOCKED BY SHELVING, SINKS, MANNEQUINS, ETC.
- MAXIMUM 90° ELBOWS IN SUPPLY LINE
- MAXIMUM 12 INCHES OF AGENT LINE FROM TANK TO FIRST NOZZLE
- COVERING A RANGE, FRYER, OR WOK TO REFLECT GENERAL PIPING REQUIREMENTS.
- IF APPLICABLE, PRE-PIPED CHARBROILED BROTHERS AND SHIPPED LIGORS
- FACTORY PIPING EXTENDS A MAXIMUM OF 6" ABOVE THE TOP OF THE HOOD.
- APPLIANCE DIMENSIONS LISTED REPRESENT THE COOKING SURFACE SIZE, NOT THE OVERALL APPLIANCE SIZE.

**SPECIFICATIONS**

THE RESTAURANT FIRE SUPPRESSION SYSTEM SHALL BE THE PRE-ENGINEERED SYSTEM WITH A FUSIBLE LINK BEARING IDENTIFICATION NETWORK. IT SHALL BE LISTED WITH UNDERWRITERS LABORATORIES, INC. UL.

THE SYSTEM SHALL BE CAPABLE OF AUTOMATIC DETECTION AND ACTUATION.

FOR LEGAL OR ELECTRICAL REASON, ACCESSIBLE SHALL BE AVAILABLE.

THE EXTRUSING AGENT SHALL BE A POTASSIUM CARBONATE, POTASSIUM ACETATE-BASED FORMULATION DESIGNED FOR FLAME INHIBITION AND SUFFOCATION OF FLAMES RELEASED FROM COOKING SURFACES.

THE REGULATED RELEASE MECHANISM SHALL BE COMPATIBLE WITH A FUSIBLE LINK DETECTION SYSTEM. THE FUSIBLE LINK SHALL BE SELECTED AND INSTALLED ACCORDING TO THE OPERATING TEMPERATURE IN THE REGULATING LIQUAGE ASSEMBLY.

**LEGEND - FIRE CABINET ANSUL SYSTEM**

- 1A 15 GALLON TANK
- 1B 3 GALLON TANK
- 1C DEM AUTOMAN RELEASE
- 1D DEM REGULATED RELEASE
- 1E ANSULX LIQUID AGENT (3 GAL.)
- 1F ANSULX LIQUID AGENT (1.5 GAL.)
- 1G CARTRIDGE (100-10)
- 1H CARTRIDGE (100-20)
- 1I CARTRIDGE (1T-A-101-30)
- 1J TEST LINK
- 1K HOSE ASSEMBLY
- 1L DUCT NOZZLE (419330)
- 1M DUCT NOZZLE (419337)
- 1N NOZZLE ASSEMBLY (419336)
- 1O NOZZLE ASSEMBLY (419333)
- 1P NOZZLE ASSEMBLY (419325)
- 1Q NOZZLE ASSEMBLY (419324)
- 1R NOZZLE ASSEMBLY (419338)
- 1S NOZZLE ASSEMBLY (419340)
- 1T NOZZLE ASSEMBLY (419339)
- 1U NOZZLE ASSEMBLY (419343)
- 1V NOZZLE ASSEMBLY (419342)
- 1W NOZZLE ASSEMBLY (419341)
- 1X DETECTOR BRACKET
- 1Y LOW TEMP FUSIBLE LINK
- 1Z HIGH TEMP FUSIBLE LINK
- 1AA MECHANICAL GAS VALVE
- 1AB ELECTRICAL GAS VALVE
- 1AC REMOTE MANUAL PULL STATION
- 1AD SERVICE ADAPTOR

**REVISIONS**

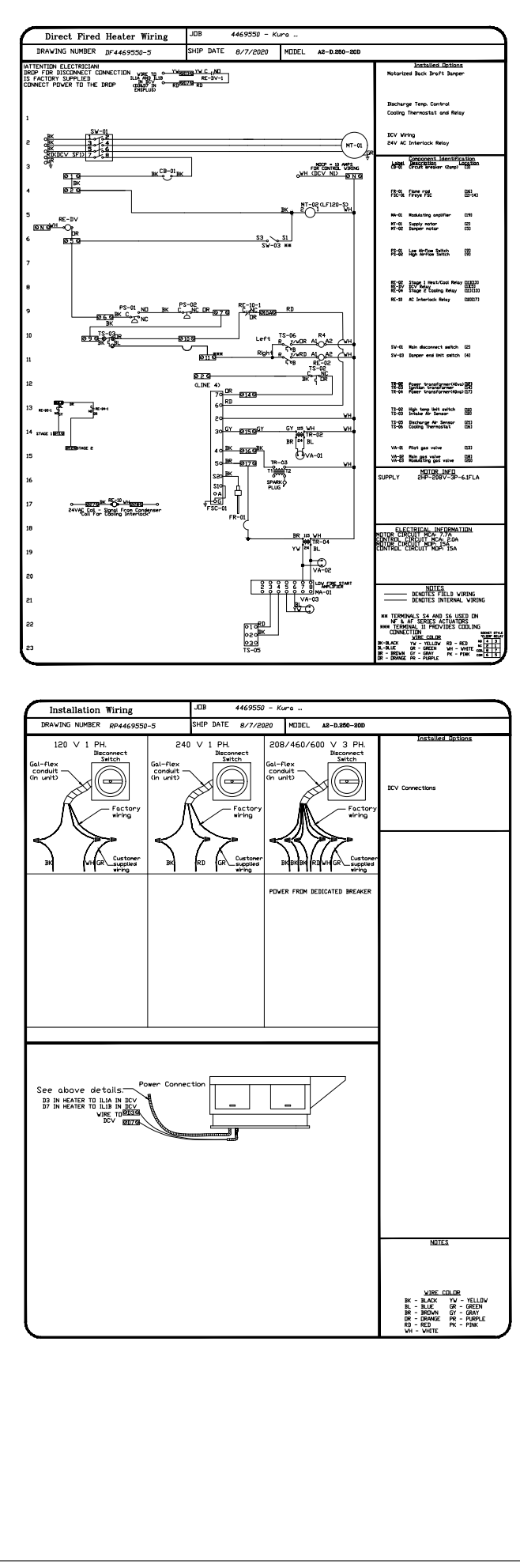
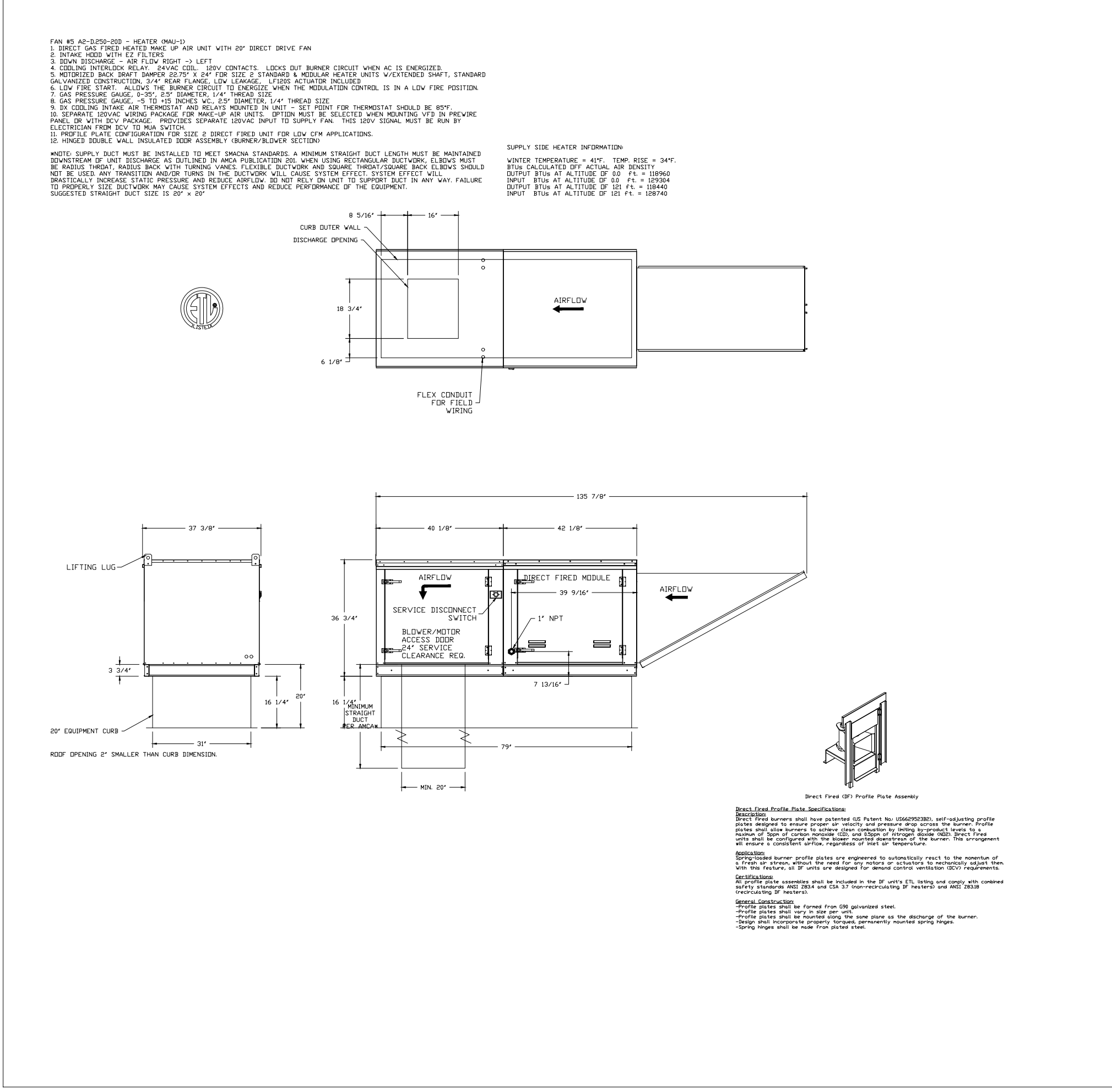
NO.	DESCRIPTION	DATE
1	ISSUED FOR PERMITS	8/7/2020

**CAPTIVE FIRE**  
DALLAS OFFICE

Kura Sushi San Francisco CA  
SAN FRANCISCO, CA, 94132

DATE: 8/7/2020  
DWG.#: 4469550  
DRAWN BY: SDJ - 43  
SCALE: 3/4" = 1'-0"  
MASTER DRAWING

SHEET NO. 3



**REVISIONS**

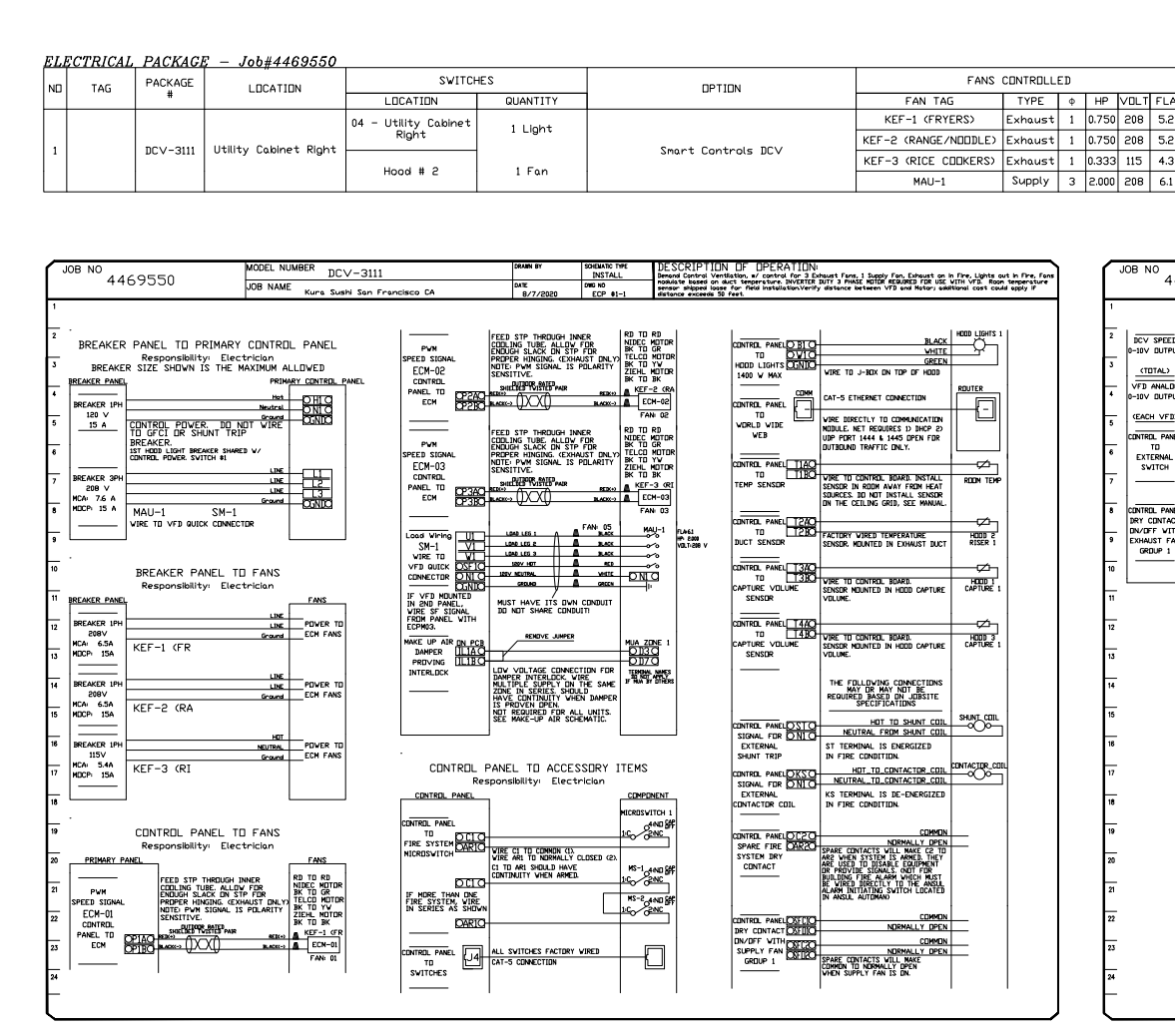
NO.	DESCRIPTION	DATE
1	ISSUED FOR PERMITS	8/7/2020

**CAPTIVE FIRE**  
DALLAS OFFICE

Kura Sushi San Francisco CA  
SAN FRANCISCO, CA, 94132

DATE: 8/7/2020  
DWG.#: 4469550  
DRAWN BY: SDJ - 43  
SCALE: 3/4" = 1'-0"  
MASTER DRAWING

SHEET NO. 6



**REVISIONS**

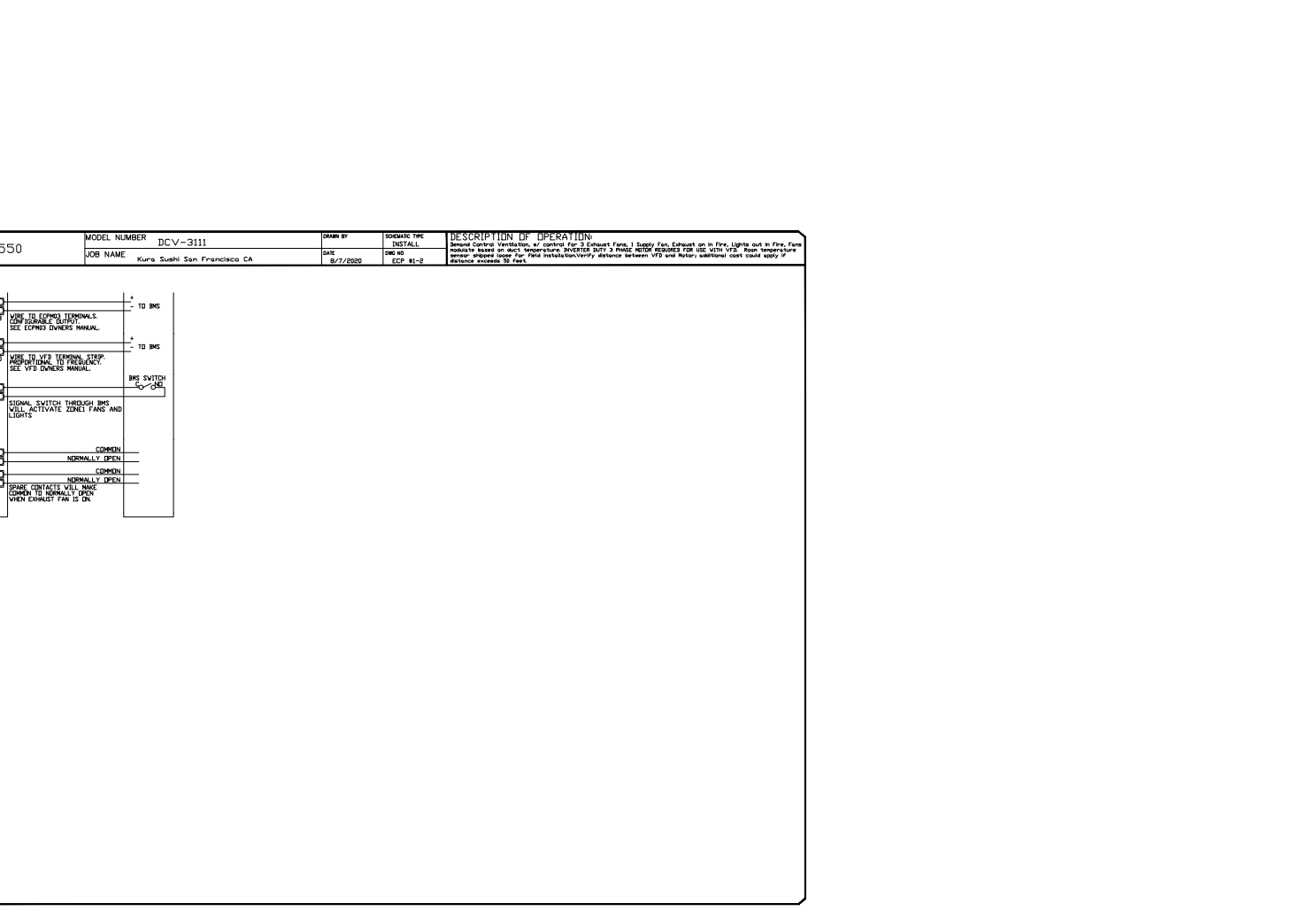
NO.	DESCRIPTION	DATE
1	ISSUED FOR PERMITS	8/7/2020

**CAPTIVE FIRE**  
DALLAS OFFICE

Kura Sushi San Francisco CA  
SAN FRANCISCO, CA, 94132

DATE: 8/7/2020  
DWG.#: 4469550  
DRAWN BY: SDJ - 43  
SCALE: 3/4" = 1'-0"  
MASTER DRAWING

SHEET NO. 7



**REVISIONS**

NO.	DESCRIPTION	DATE
1	ISSUED FOR PERMITS	8/7/2020

**CAPTIVE FIRE**  
DALLAS OFFICE

Kura Sushi San Francisco CA  
SAN FRANCISCO, CA, 94132

DATE: 8/7/2020  
DWG.#: 4469550  
DRAWN BY: SDJ - 43  
SCALE: 3/4" = 1'-0"  
MASTER DRAWING

SHEET NO. 7

**REVISIONS**

NO.	DESCRIPTION	DATE
1	ISSUED FOR PERMITS	8/7/2020

**CAPTIVE FIRE**  
DALLAS OFFICE

Kura Sushi San Francisco CA  
SAN FRANCISCO, CA, 94132

DATE: 8/7/2020  
DWG.#: 4469550  
DRAWN BY: SDJ - 43  
SCALE: 3/4" = 1'-0"  
MASTER DRAWING

SHEET NO. 7



CITY & CLIENT COMMENTS (3/17/2021)

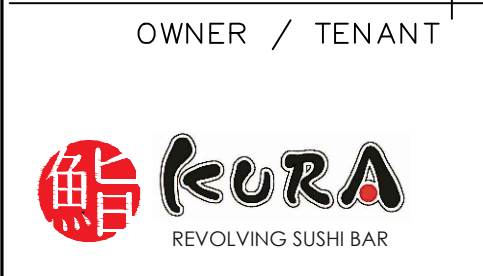
REVISIONS

THESE DRAWINGS AND MATERIALS OF TSUKURU USA, ALL INFORMATION CONTAINED HEREIN IS RESTRICTED FOR USE ONLY ON THE FEDERAL LAW PROHIBITS THE REPRODUCTION, SALE OR OTHER USE WITHOUT THE EXPRESSED WRITTEN PERMISSION OF TSUKURU USA. THESE DRAWINGS AND SPECIFICATIONS SHALL CONSTITUTE PRIMA FACIE EVIDENCE OF ACCEPTANCE OF THESE RESTRICTIONS.

REGISTERED PROFESSIONAL ENGINEER  
MECHANICAL  
STATE OF CALIFORNIA  
35558

03/22/2021

**KURA SUSHI**  
3251 20TH AVE,  
SAN FRANCISCO, CA 94132



OWNER / TENANT

DRAWING TITLE  
**MECHANICAL HOOD DETAILS**

PROJECT MGR. TH  
DATE 03/22/2021  
DRAWN BY CS  
SHEET NUMBER

**M4.1**

