

MECHANICAL ABBREVIATIONS			
A/C	AIR CONDITIONER	EC	ELECTRICAL CONTRACTOR
A/E	ARCHITECT/ENGINEER	ELEC	ELECTRICAL
AHU	AIR HANDLING UNIT	EL	ELEVATION
ALT	ALTERNATE	EQUIP	EQUIPMENT
AP	ACCESS PANEL	EWG	ELECTRIC WATER COOLER
APPROX	APPROXIMATELY	EXH	EXHAUST
ARCH	ARCHITECTURAL/ARCHITECT	EXP	EXPANSION
BDD	BACK DRAFT DAMPER	EXT	EXTERIOR
BDU	BRITISH THERMAL UNIT	F&T	FLOAT & THERMOSTATIC
BTUH	B.T.U. PER HOUR	FCO	FLOOR CLEANOUT
		FD	FLOOR DRAIN
		FE	FIRE EXTINGUISHER
		FL	FIRE HYDRANT
		FLX	FLEXIBLE
		FMB	FLOOR MOTOR OPERATED DAMPER
		FOF	FUEL OIL FILL
		FOR	FUEL OIL RETURN
		FOS	FUEL OIL SUPPLY
		FV	FUEL OIL VENT
		FFM	FEET PER MINUTE
		FFS	FEET PER SECOND
		FT	FEET
		FLBG	PLUMBING
		CONN	CONNECTION
		CONT	CONTINUOUS
		CONTR	CONTRACTOR
		CONV	CONVERT
		GEN	GENERAL
		GPH	GALLONS PER HOUR
		GPM	GALLONS PER MINUTE
		GA	GAUGE
		GALV	GALVANIZE
		GC	GENERAL CONTRACTOR
		GM	GENERAL
		GB	GIBBS
		HOSE BIB	
		HD	HEAD
		HR	HORIZONTAL
		HP	HORSEPOWER
		HTC	HEATING
		DPR	DAMPERS
		DS	DOWN SPOUT
		DX	DIRECT EXPANSION
		INSUL	INSULATION
		IR	IRON PIPE SIZE
		JAN	JANITOR
		LAV	LAVATORY
		MB	MOP BASIN
		MGH	THOUSAND BTUS PER HOUR
		MC	MECHANICAL CONTRACTOR
		MECH	MECHANICAL
		MD	MEDIUM
		MH	MAN HOLE
		MO	MOTOR OPERATED DAMPER
		MTD	MOUNTED
		NAT	NATURAL
		OC	ON CENTER
		OD	OUTSIDE DIAMETER
		OPG	OPENING
		PSIA	POUNDS PER SQ. INCH ABSOLUTE
		PSIG	POUNDS PER SQ. INCH GAUGE
		PREFAB	PREFABRICATED
		PRV	PRESSURE REDUCING VALVE
		RA	RETURN AIR
		RAD	RADIATOR
		RD	ROOF DRAIN
		REC	RECEIVED
		REF	REFRIGERANT
		REL	RELIEF
		REQ	REQUIRED
		RET	RETURN
		REV	REVISION
		RPM	REVOLUTIONS PER MINUTE
		S	SINK
		SA	SUPPLY AIR
		SAN	SANITARY
		SCH	SCHEDULE
		SECT	SECTION
		SH	SHOWER
		SP	STATIC PRESSURE
		SPEC	SPECIFICATION
		SS	STAINLESS STEEL
		STD	STANDARD
		STR	STRANDED
		STRUC	STRUCTURAL
		SUSP	SUSPEND
		SW	SWITCH
		T-STAT	THERMOSTAT
		TEMP	TEMPERATURE
		THRM	THERMISTOR
		THRU	THROUGH
		TILT	TILE
		TYP	TYPICAL
		UL	UNDERWRITERS LAB.
		UR	URINAL
		V	VENT
		VAC	VACUUM
		VCP	VITRIFIED CLAY PIPE
		VERT	VERTICAL
		VOL	VOLUME
		VTR	VENT THRU ROOF
		W	WASTE
		W/O	WITHOUT
		WB	WET BULB TEMP.
		WC	WATER CLOSET
		WCO	WALL CLEANOUT
		WH	WATER HEATER
		WV	WATER VALVE

NOTE: SCHEDULE IS STANDARD. ALL ABBREVIATIONS LISTED DO NOT NECESSARILY APPEAR ON THESE PLANS.

MECHANICAL SYMBOLS			
1. THESE SYMBOLS COMPRISE A STANDARD LIST; NOT ALL SYMBOLS MAY APPEAR ON THIS PROJECT.			
2. DUCT, REGISTER, GRILLE, DIFFUSER, AND PIPE SIZES ARE IN INCHES.			

**DRAWING NOTES**

1. ALL CONCEALED DUCTWORK SHALL BE INSULATED IN ACCORDANCE WITH SPECIFICATIONS.
2. KITCHEN HOOD EXHAUST DUCTWORK SHALL BE INSULATED IN ACCORDANCE WITH SPECIFICATIONS.

**KEY NOTES**

1. CEILING FAN TO BE INSTALLED BETWEEN ROOF JOISTS. BOTTOM OF FAN SHALL BE ABOVE BOTTOM CHORD OF ROOF JOISTS.
2. SUSPEND CEILING FAN AS HIGH AS POSSIBLE.
3. MC TO PROVIDE GALVANIZED "PANT GRIP" CHASE FROM ROOF STRUCTURE TO COOLER TOP FOR REFRIGERANT PIPING. COORDINATE SIZE AND LOCATION WITH RC.
4. SENSOR TO BE MOUNTED 7'-0" AFF OR ABOVE SHELVING. COORDINATE LOCATION WITH OWNER.

**Matrix**  
 Mechanical Solutions, LLC  
 3380 South 108th Street, Suite 201  
 Greenfield, Wisconsin 53227  
 Phone: (414) 329-2827 Fax: (414) 329-2820  
 Email: matrix@matrixmech.com

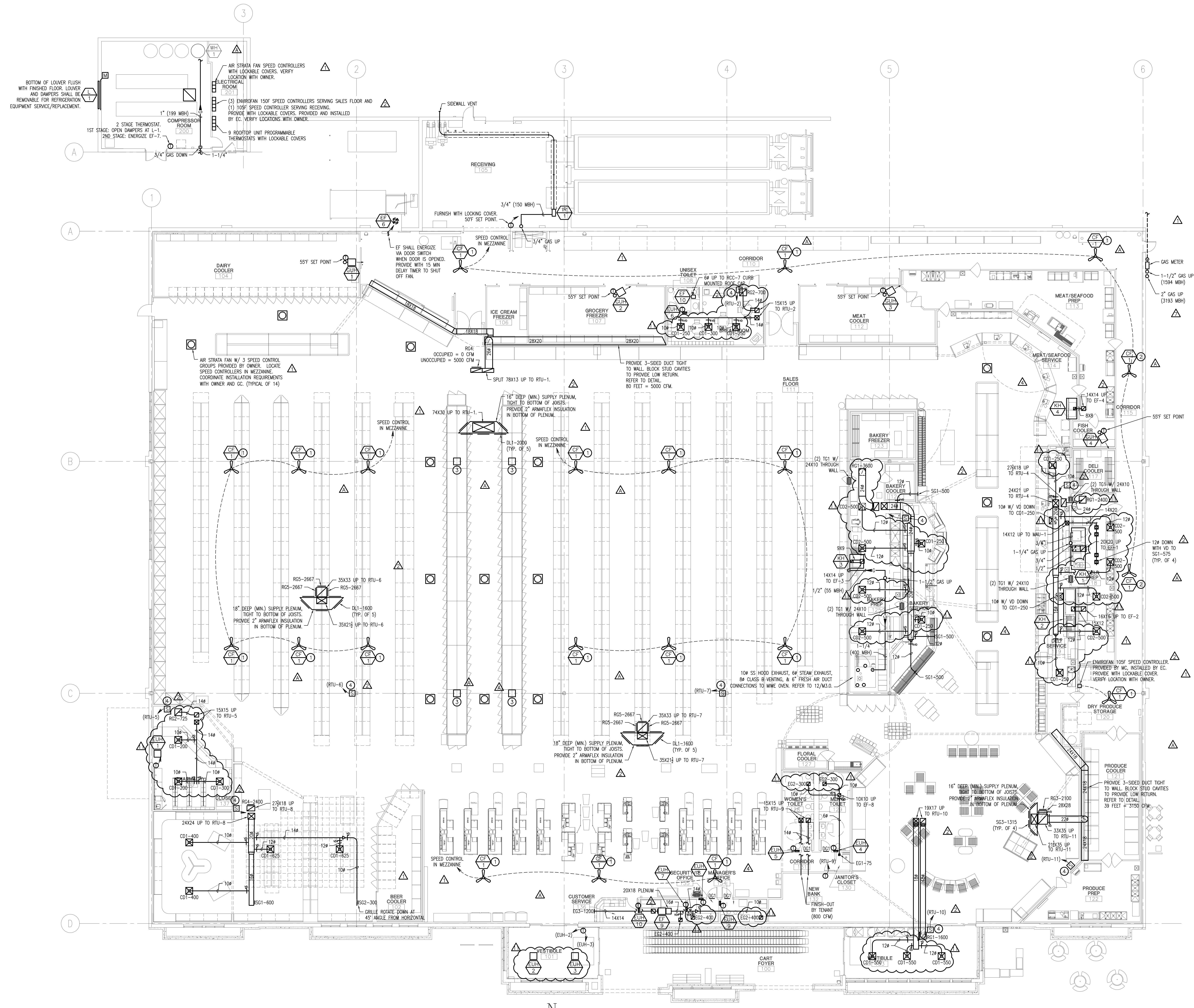
INFORMATION ON THIS DRAWING TAKES PRECEDENCE OVER THE SPECIFICATIONS MANUAL IF THE DOCUMENTS HAVE CONFLICTING INFORMATION.

NO.	DATE	BY	DESCRIPTION
1	09/05/07	RDS	BID SET
2	09/12/07	RDS	REVISED PER ADDENDUM A
3	10/01/07	RDS	SUBMITTED FOR STATE REVIEW
4	10/05/07	RDS	REVISED PER CB#1
5	10/17/07	RDS	REVISED PER CB#2
6	11/06/07	RDS	CONSTRUCTION SET
7	01/04/08	RDS	REVISED PER CB#4
8	02/27/08	RDS	REVISED PER CB#7
9	04/02/08	RDS	REVISED PER CB#11

**MECHANICAL PLAN**

SCALE: 3/32" = 1'-0" SHEET: 3146-1714  
 PROJECT #: M2.0  
 DRWN BY: TNT CHKD BY: RDS  
 BLDG. SUBMITTAL: -

11/06/07 CONSTRUCTION SET



**MECHANICAL PLAN**  
 SCALE: 3/32" = 1'-0"

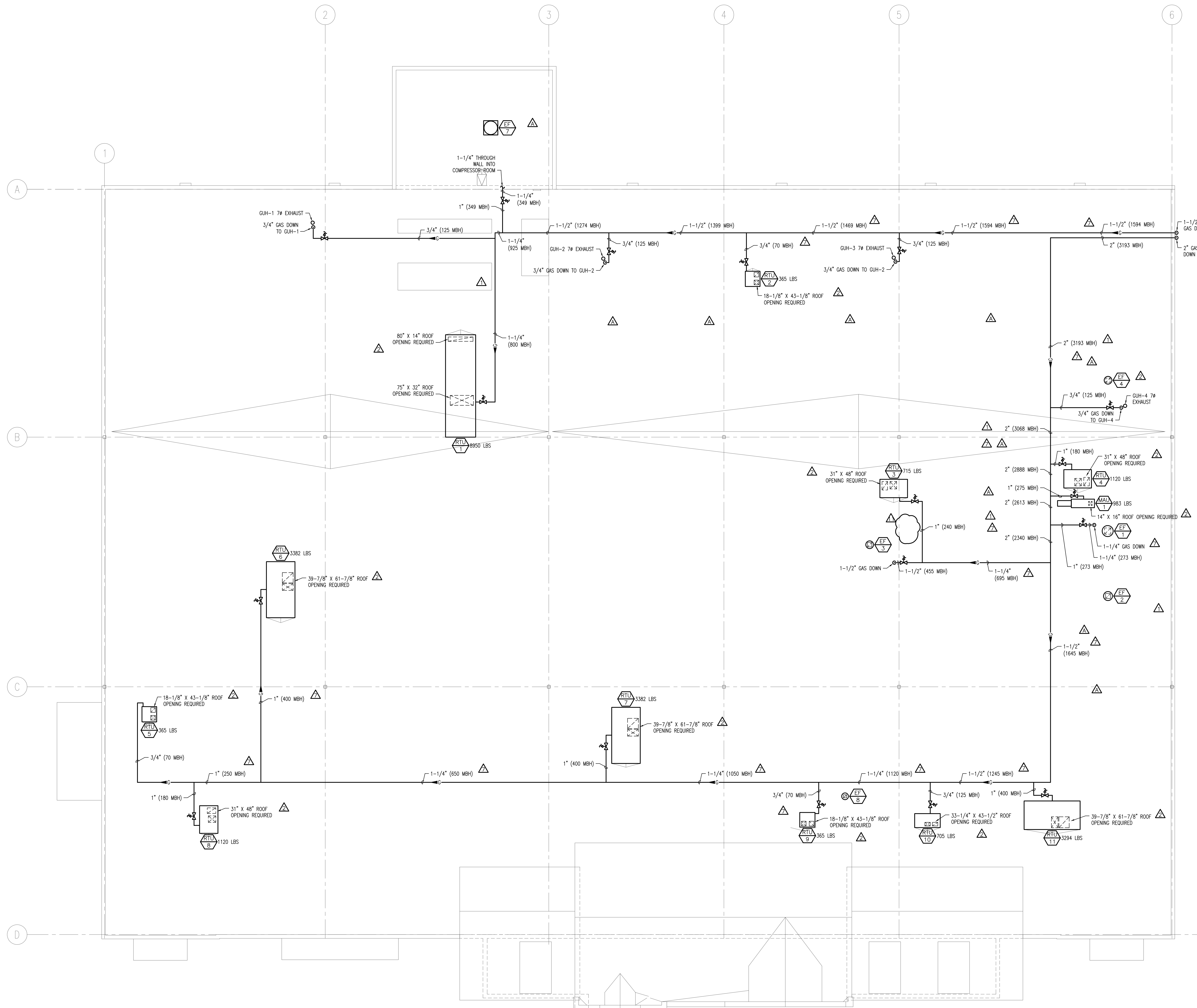
**COPPS #1714**  
 SCHOEN ST. & MAIN ST.  
 GREEN BAY, WI 54302



DEVELOPED BY:  
**ROUNDYS**  
 875 E. WISCONSIN AVENUE  
 MILWAUKEE, WI 53201



LEAD CONTRACTOR:  
**JE DUNN CONSTRUCTION CO.**  
 9855 W. 78TH STREET, SUITE 270  
 EDEN PRAIRIE, MN 55458-1549  
 TEL. 952.830.9000



**MECHANICAL ROOF PLAN**  
 SCALE: 3/32" = 1'-0"

**Matrix**  
 Mechanical Solutions, LLC  
 3380 South 109th Street, Suite 201  
 Greenfield, Wisconsin 53227  
 Phone: (414) 329-2827 Fax: (414) 329-2820  
 Email: matrix@matrixmech.com

INFORMATION ON THIS DRAWING TAKES PRECEDENCE OVER THE SPECIFICATIONS MANUAL IF THE DOCUMENTS HAVE CONFLICTING INFORMATION.

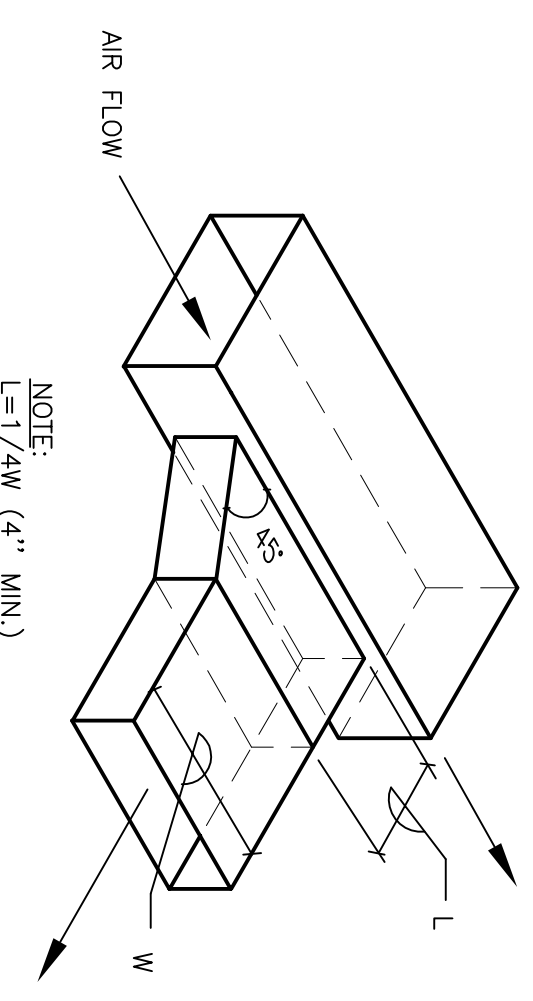
NO.	DATE	BY	DESCRIPTION
△	09/05/07		BID SET
△	09/12/07	RDS	REVISED PER ADDENDUM A
△	10/01/07		SUBMITTED FOR STATE REVIEW
△	10/05/07		REVISED PER CB#1
△	10/17/07		REVISED PER CB#2
△	11/06/07		CONSTRUCTION SET
△	02/27/08		REVISED PER CB#7
△	04/02/08		REVISED PER CB#11

**MECHANICAL ROOF PLAN**

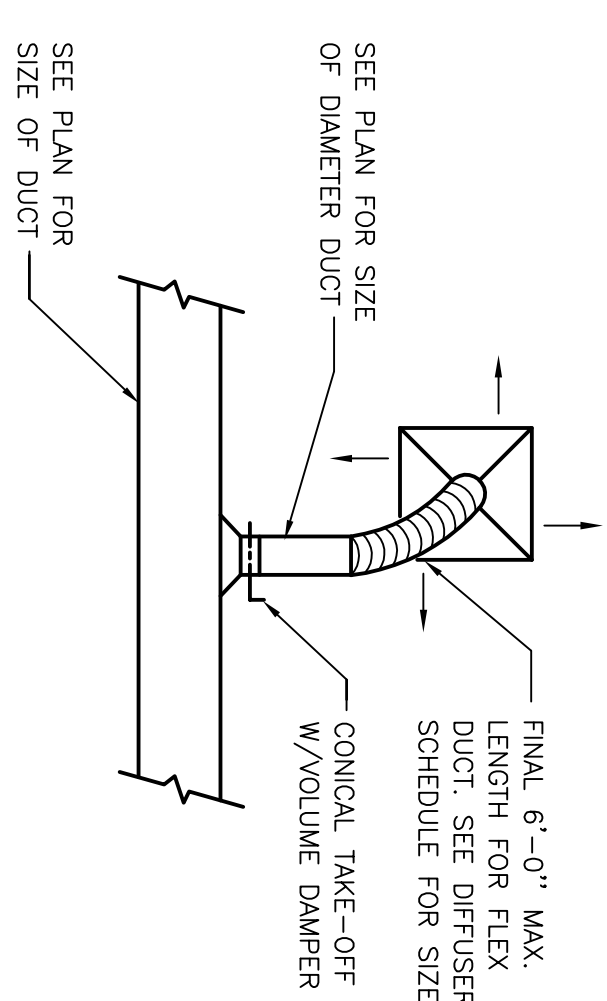
SCALE: 3/32"=1'-0" SHEET:  
 PROJECT #: 3146-1714  
 DRWN BY: TNT CHKD BY: RDS  
 BLDG. SUBMITTAL: -

**M2.1**

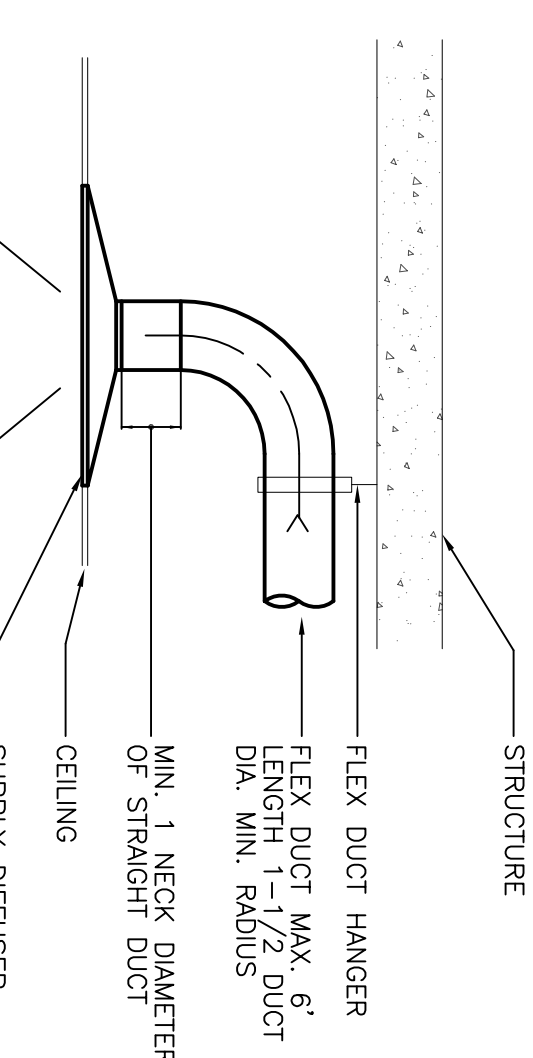
11/06/07 CONSTRUCTION SET



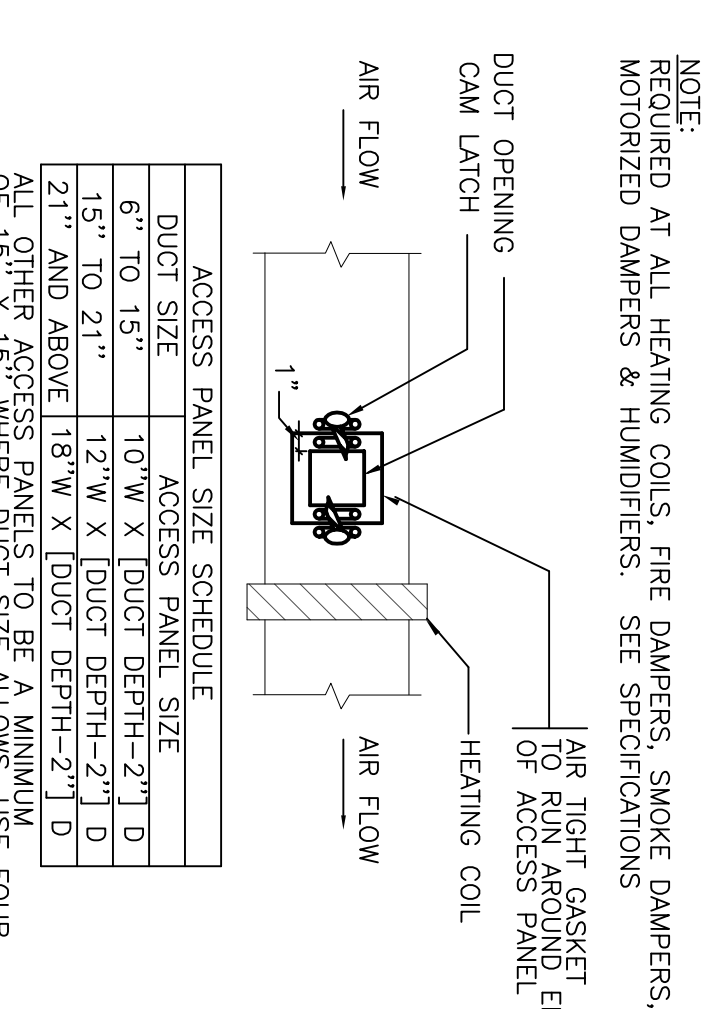
1  
M3.0 NO SCALE  
**BRANCH DUCT TAKE-OFF**



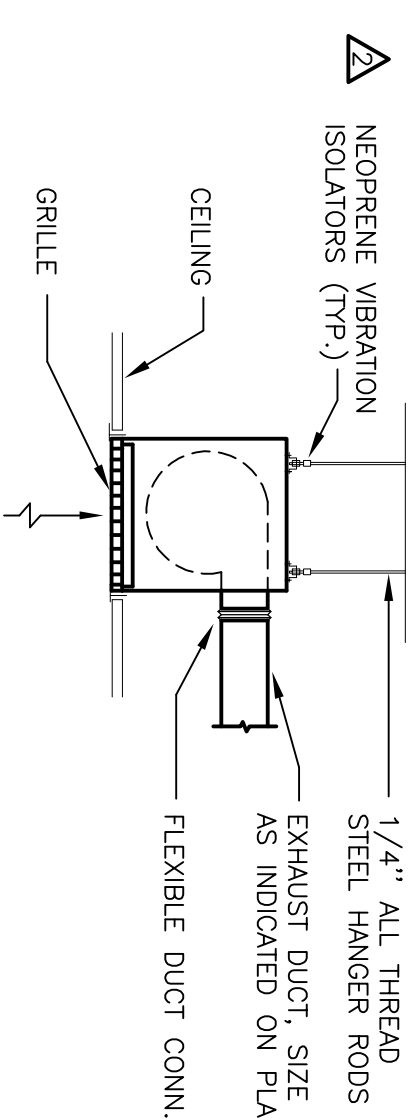
2  
M3.0 NO SCALE  
**ROUND DUCT TAKE-OFF**



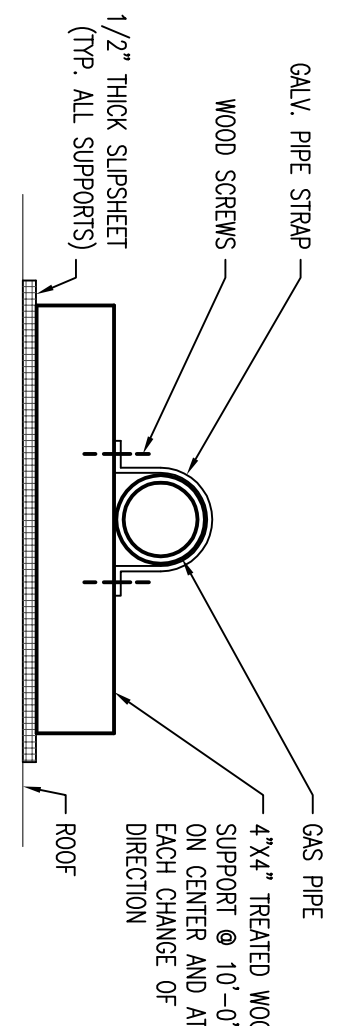
3  
M3.0 NO SCALE  
**SUPPLY DIFFUSER DETAIL**



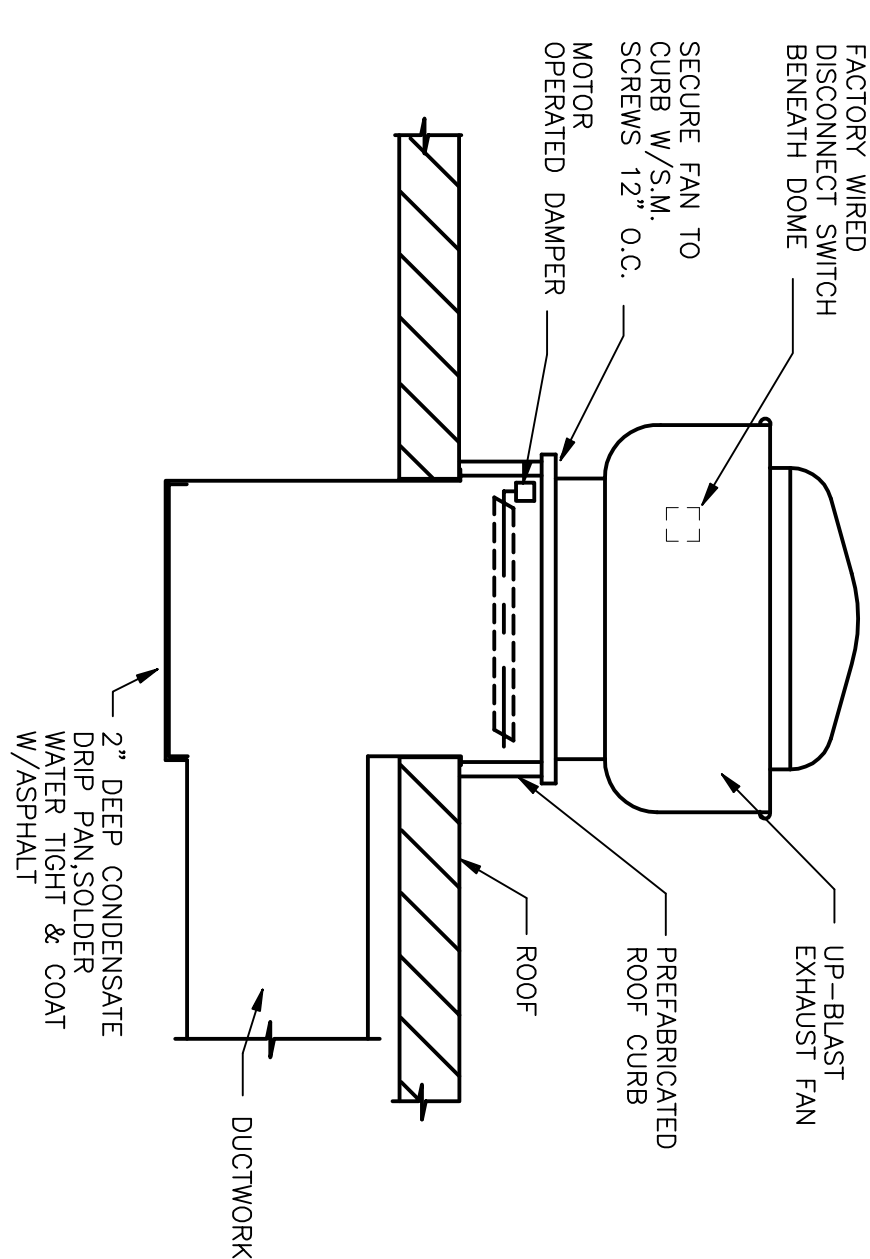
4  
M3.0 NO SCALE  
**ACCESS PANEL DETAIL**



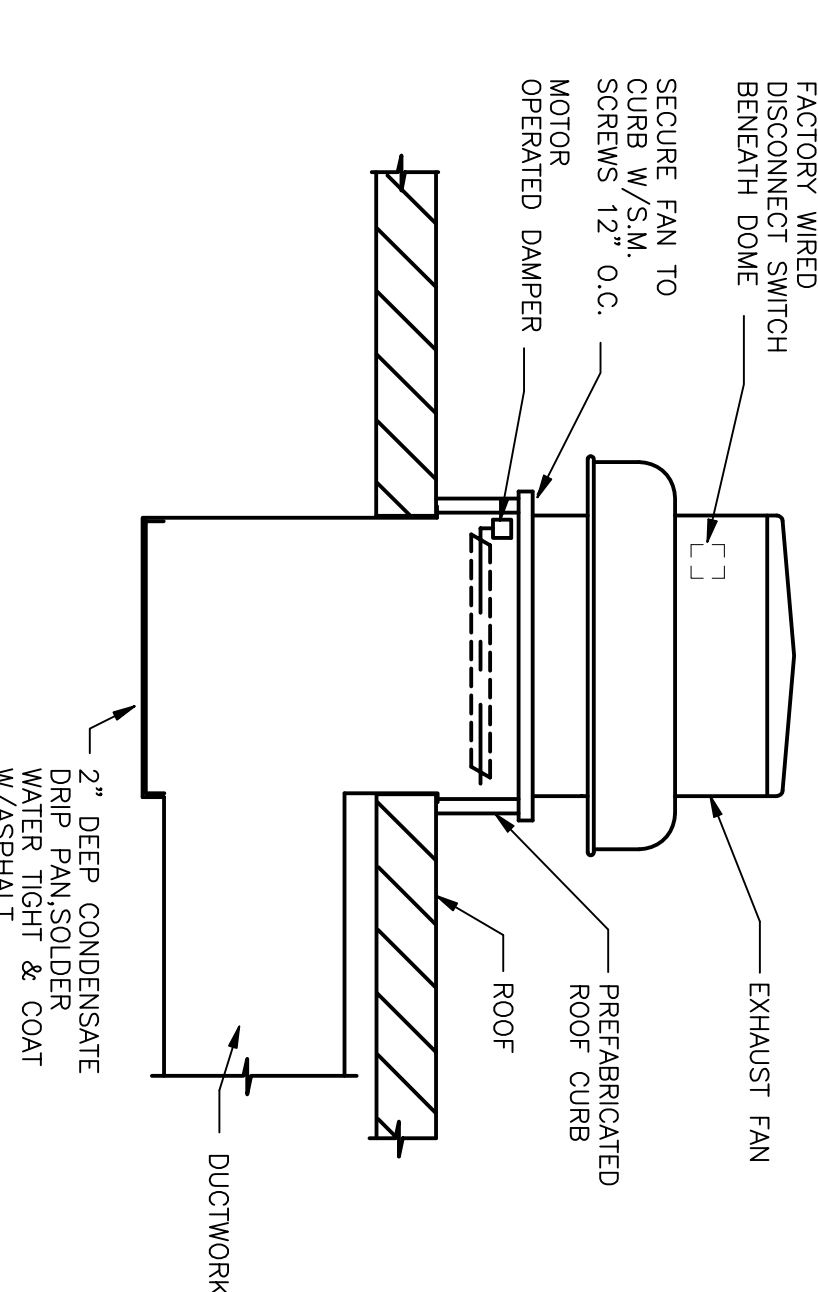
5  
M3.0 NO SCALE  
**CEILING FAN DETAIL**



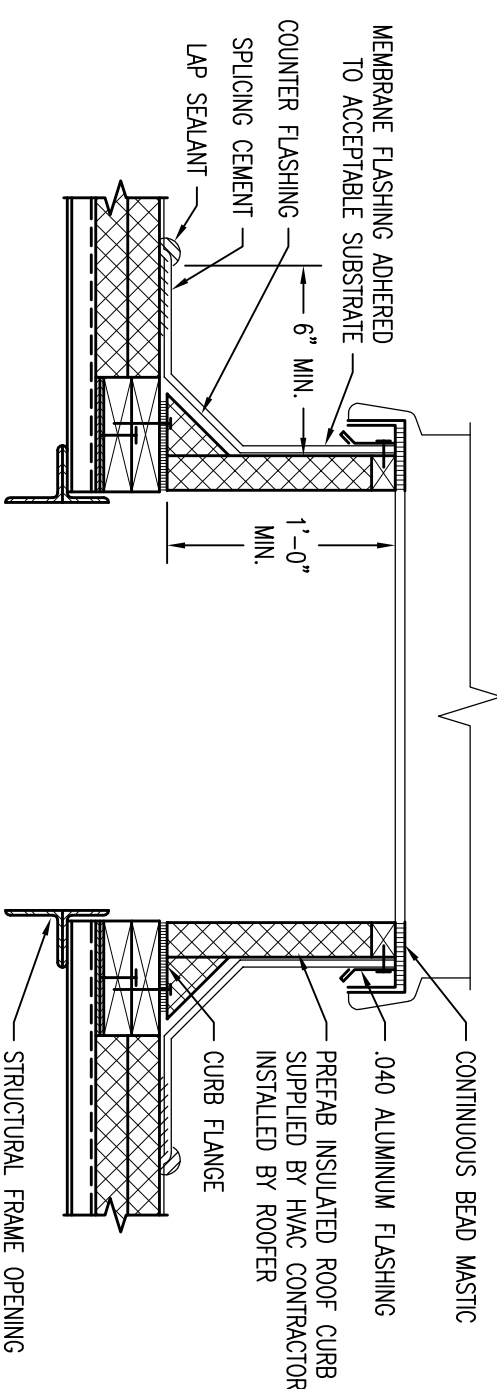
6  
M3.0 NO SCALE  
**GAS PIPING SUPPORT**  
NOTE: ALL GAS PIPING INCLUDING THERMOS TO BE PAINTED WITH TWO COATS OF PAINT COMPONENT WITH GC.



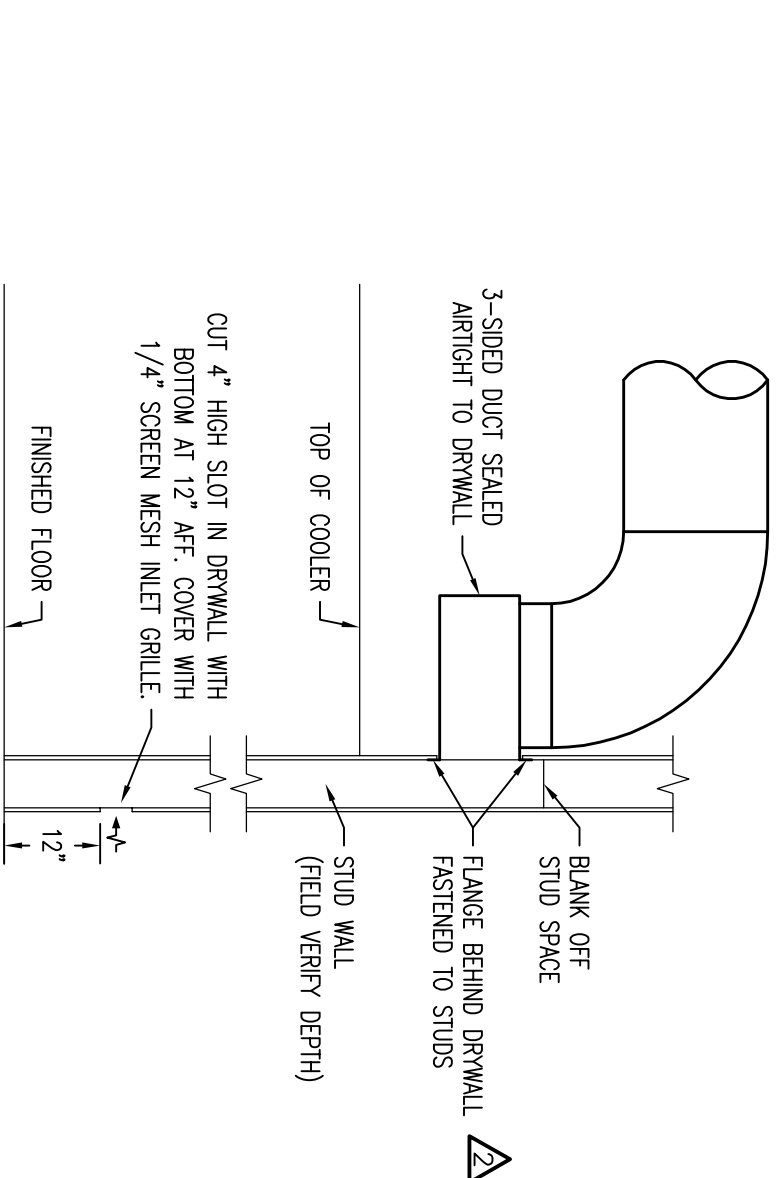
7  
M3.0 NO SCALE  
**UPBLAST EXHAUST FAN WITH DUCTWORK**  
NOTE: DIRECT DRAIN PANS TO BE FINISHED WITH SPEED CONTROL.



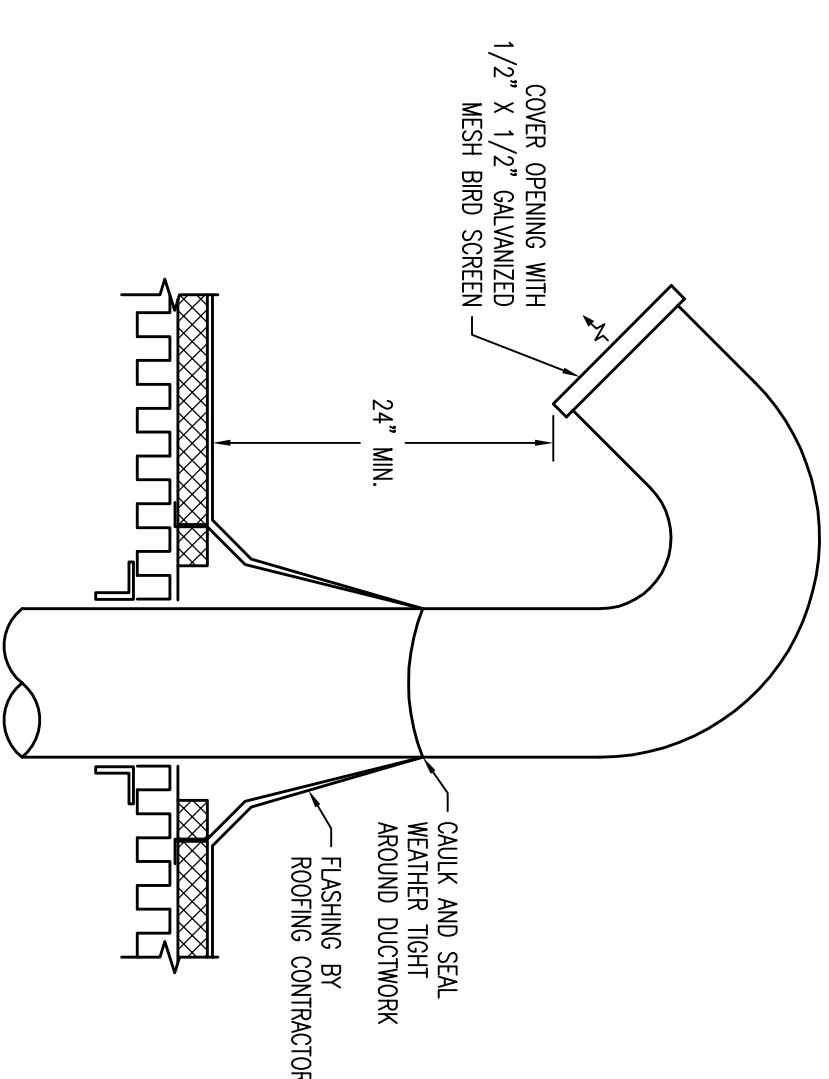
8  
M3.0 NO SCALE  
**EXHAUST FAN WITH DUCTWORK**  
NOTE: DIRECT DRAIN PANS TO BE FINISHED WITH SPEED CONTROL.



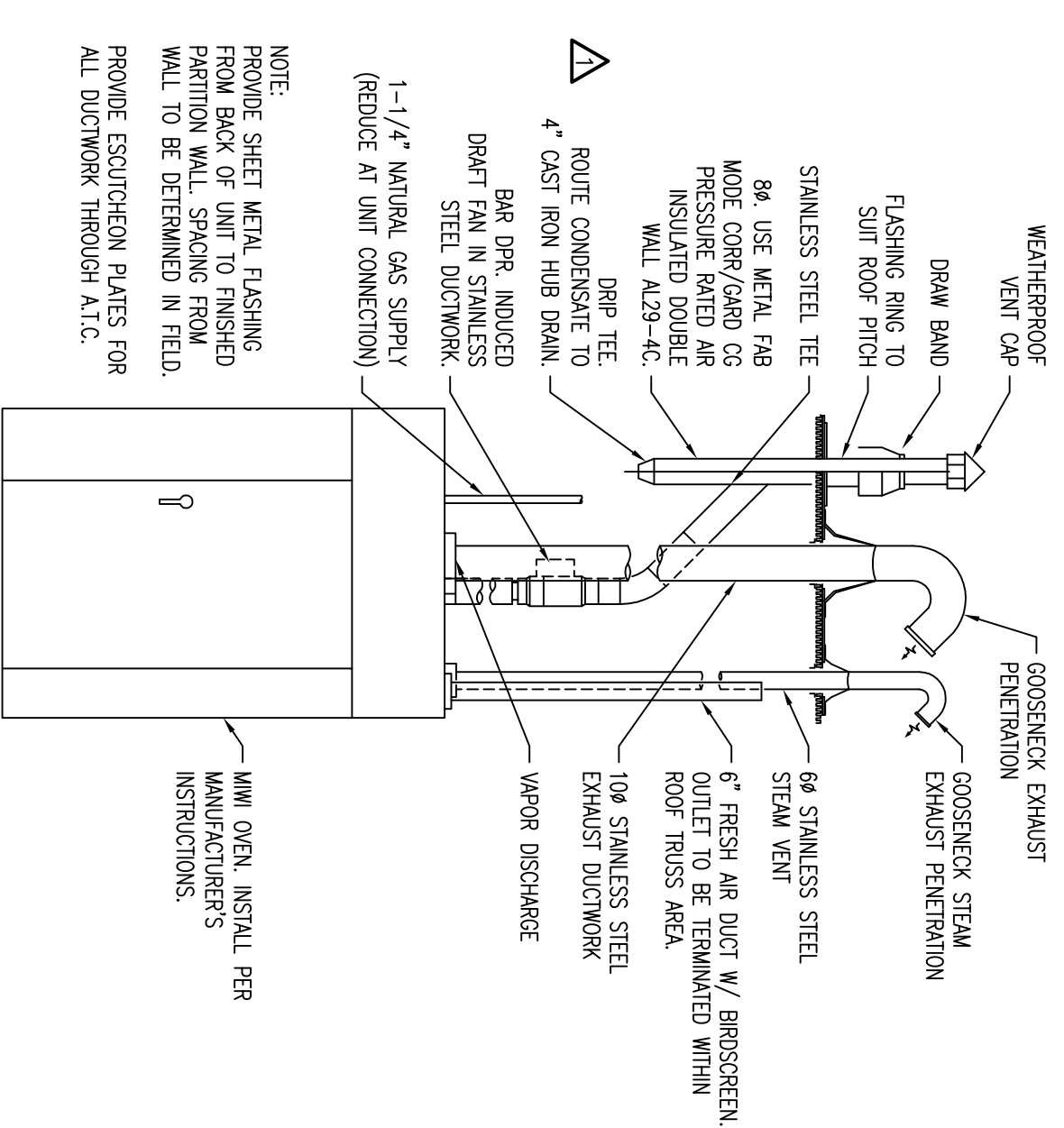
9  
M3.0 NO SCALE  
**ROOF CURB DETAIL**



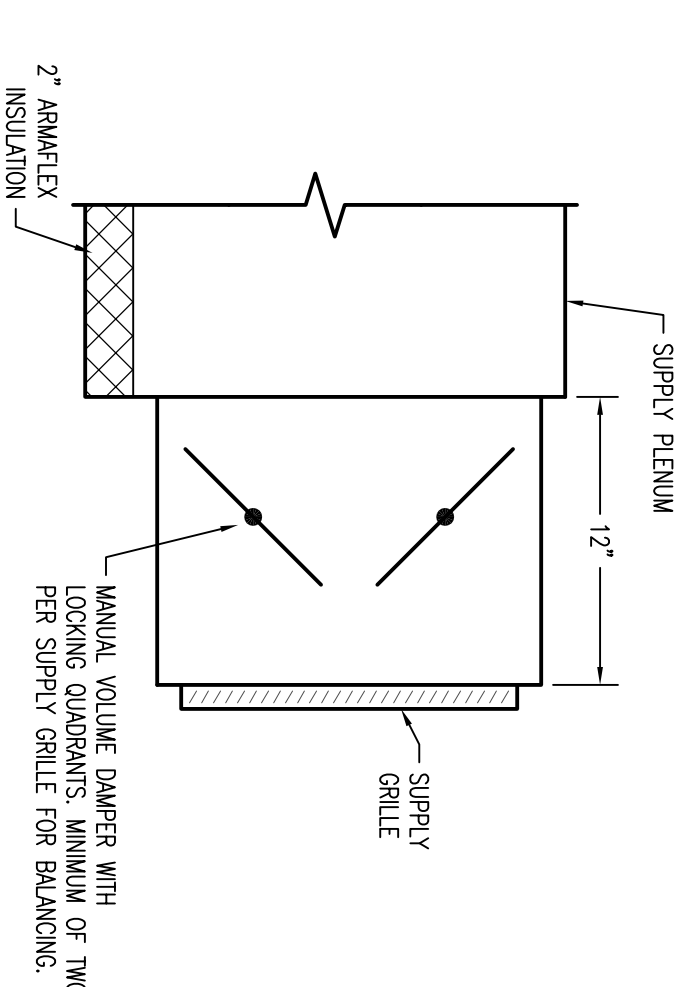
10  
M3.0 NO SCALE  
**PRODUCE LOW RETURN INLET**



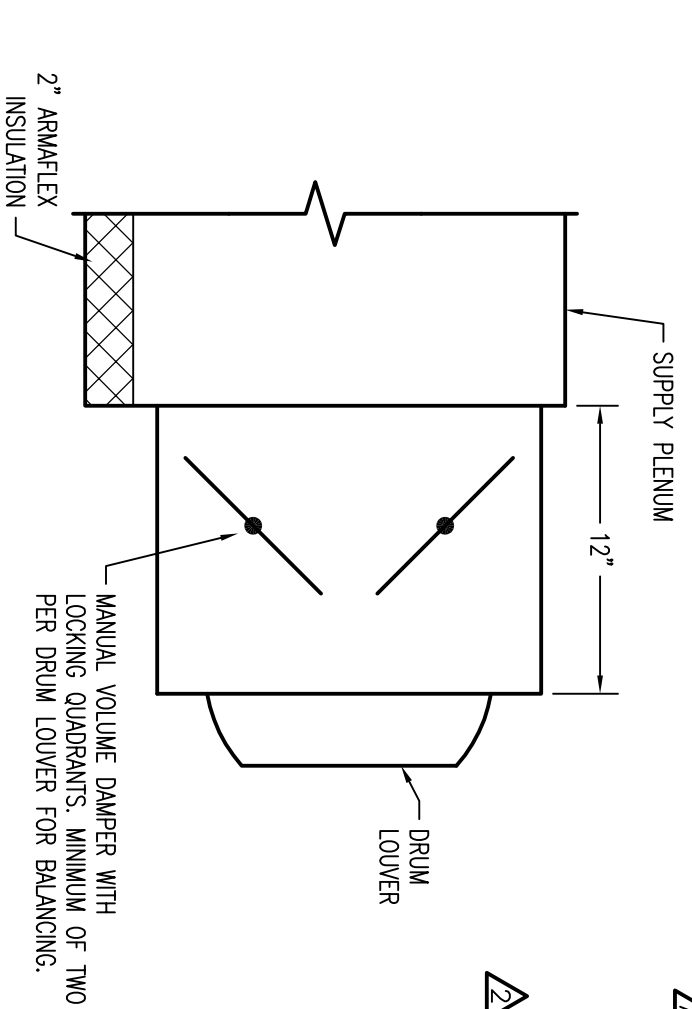
11  
M3.0 NO SCALE  
**MIWI OVEN GOOSENECK**



12  
M3.0 NO SCALE  
**MIWI OVEN VENTING**



13  
M3.0 NO SCALE  
**SUPPLY GRILLE AT SUPPLY PLENUM**



14  
M3.0 NO SCALE  
**DRUM LOUVER AT SUPPLY PLENUM**

SCHROEDER  
and HOLT  
ARCHITECTS LTD.  
244 N. BROADWAY  
MILWAUKEE WI 53202

PHONE 414.276.1760

FAX 414.276.1764

Email mail@schroederholt.com

COPPS #1714  
SCHOEN ST. & MAIN ST.  
GREEN BAY, WI 54302

PHONE 414.276.1760

ROUNDY'S  
SINCE 1872

JEDUNN  
CONSTRUCTION NORTH CENTRAL

DEVELOPED BY:  
ROUNDY'S  
875 E. WISCONSIN AVENUE  
MILWAUKEE WI 53201

LEAD CONTRACTOR:  
JEDUNN CONSTRUCTION CO.  
868 W. 70TH STREET, SUITE 200  
GREEN BAY, WI 54308-1848  
TEL. 920.830.8000

**M3.0**  
Mechanical Solutions, LLC  
3380 South 103rd Street, Suite 201  
Greenfield, Wisconsin 53227  
Phone: (414) 329-2827 Fax: (414) 329-2820  
Email: matrx@m3mech.com

NO.	DATE	BY	DESCRIPTION
△	09/05/07		BD SET
△	09/12/07	ROS	REVISED PER ADDENDUM A
△	10/01/07		SUBMITTED FOR STATE REVIEW
△	10/05/07		REVISED PER GB#1
△	10/17/07		REVISED PER GB#2
△	11/09/07		CONSTRUCTION SET

**MECHANICAL DETAILS**

SCALE: NONE SHEET:  
PROJECT #: 3146-1714  
DRAWN BY: TMT CHKD BY: ROS  
BLDG. SUBMITTAL: -  
**M3.0**