



**GENERAL NOTES:**

- SEE SHEET M001 FOR MECHANICAL LEGEND AND GENERAL NOTES.
- COORDINATE WITH OTHER DISCIPLINES PRIOR TO INSTALLATION OF MECHANICAL COMPONENTS.

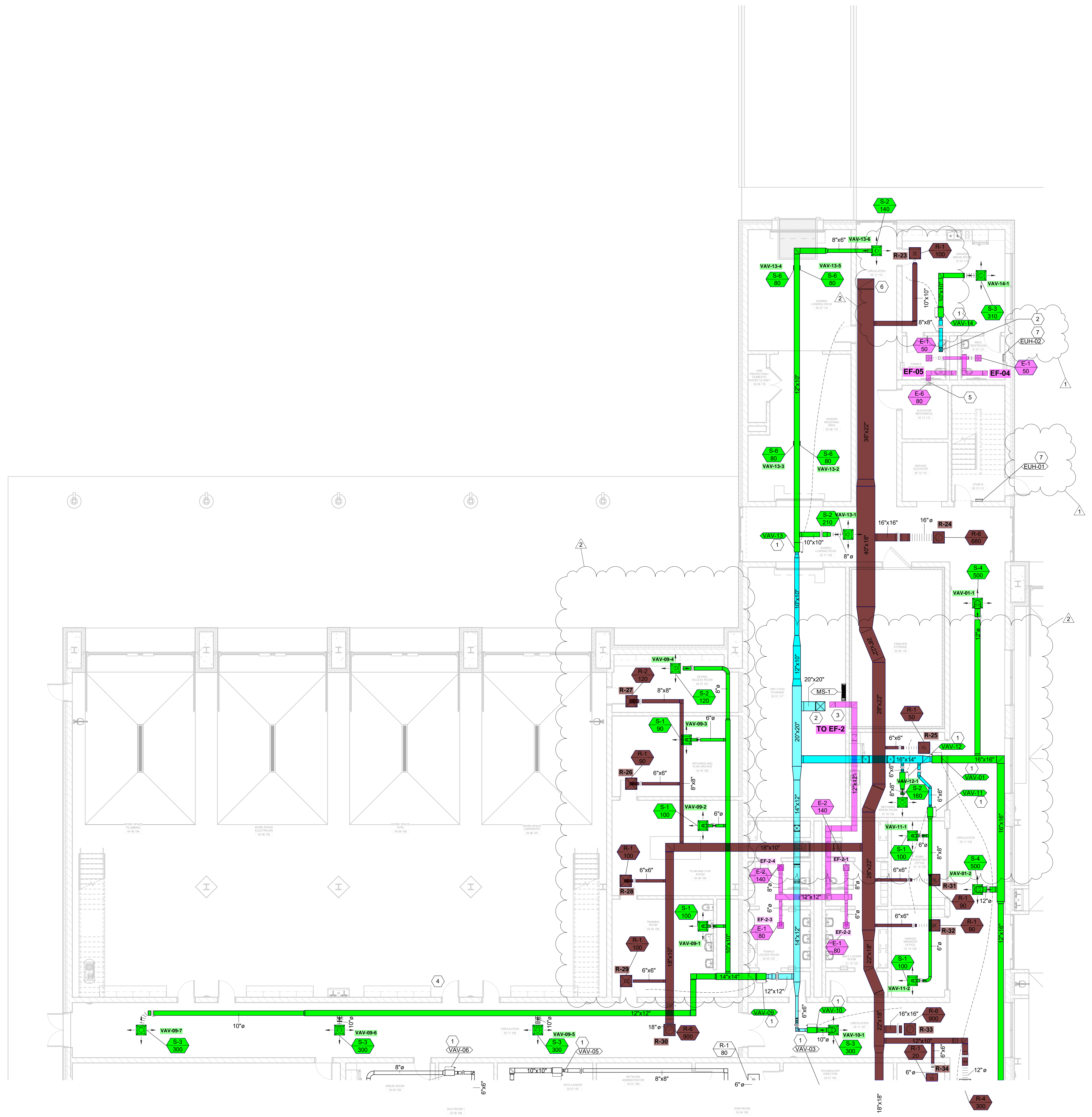


GRW PROJECT NO. 0506-01  
 CLIENT PROJECT NO. BG 23-173  
 THIS DOCUMENT IS THE PROPERTY OF GEOSPATIAL. IT IS TO BE USED ONLY FOR THE PROJECT AND SITE SPECIFIC PURPOSES FOR WHICH IT WAS PREPARED.

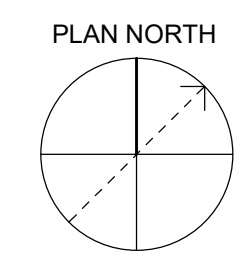
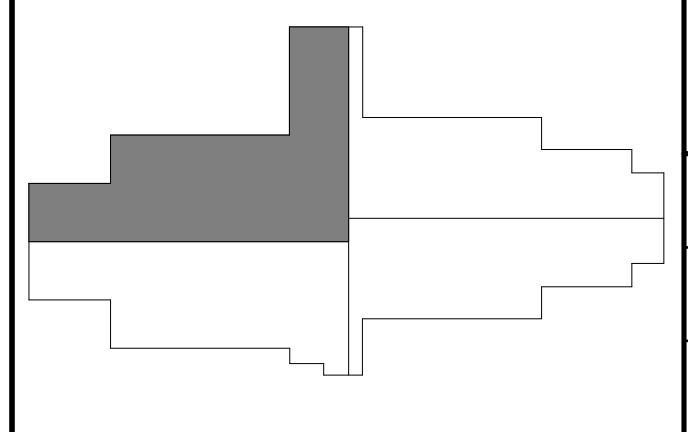


**SHEET KEYNOTES**

- FURNISH AND INSTALL VAV TERMINAL UNIT. MAINTAIN ALL MANUFACTURER'S REQUIRED CLEARANCES. SEE SCHEDULES AND DETAILS FOR MORE INFORMATION.
- SUPPLY DUCTWORK DOWN FROM SECOND LEVEL. SEE SHEET MH405 FOR CONTINUATION.
- PROVIDE DUCTWORK UP TO EF-02. SEE SHEET MH405 FOR CONTINUATION.
- HVAC CONTROL PANEL FOR HVLS FANS & GAS-FIRED RADIANT HEATERS. CONTROL WIRING SHALL BE PROVIDED UNDER DIVISION 23 CONTRACT.
- FURNISH AND INSTALL FIRE DAMPER WHERE DUCTWORK PENETRATES THE FIRE-RATED WALL.
- PROVIDE RETURN DUCTWORK UP TO SECOND LEVEL. SEE SHEET MH405 FOR CONTINUATION.
- FURNISH AND INSTALL WALL-MOUNTED ELECTRIC UNIT HEATER. BASE OF UNIT SHALL BE 3'-0" AFF. SEE SCHEDULES AND DETAILS FOR MORE INFORMATION.



**AREA KEY PLAN**



**1 FIRST LEVEL - AREA A - HVAC PLAN**  
 SCALE: 1/8" = 1'-0"

REVISIONS	DATE	BY	CHKD BY	DESCRIPTION
1	ADDITIONAL 1	JUS	JUS	ISSUED FOR PERMIT
2	REVISED	JUS	CVS	REVISED
3	APPROVED	CVS	CVS	APPROVED

DATE: MARCH 30, 2023  
 SCALE: 1/8" = 1'-0"  
 SHEET NO: MH401 X2

**FIRST LEVEL - AREA A - HVAC PLAN**  
 KENTON COUNTY SCHOOL DISTRICT SUPPORT OPERATIONS CENTER  
 11800 TAYLOR MILL ROAD, INDEPENDENCE, KY 41051

DESIGNED	JJS
DRAWN	JJS
REVIEWED	CVS
APPROVED	CVS

NO.	DATE	DESCRIPTION

REVISIONS

DATE: MARCH 30, 2023  
 SCALE: 1/8" = 1'-0"  
 SHEET NO. MH402 X1

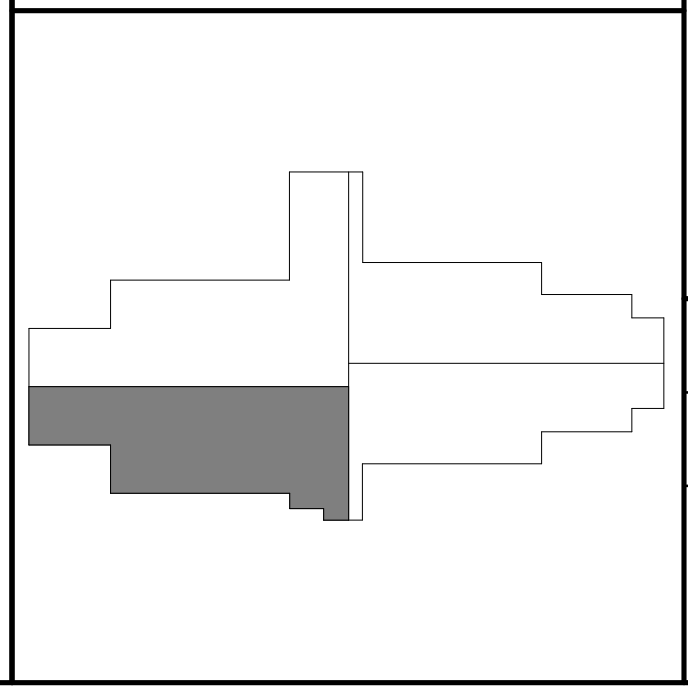
**GENERAL NOTES:**

- SEE SHEET M001 FOR MECHANICAL LEGEND AND GENERAL NOTES.
- COORDINATE WITH OTHER DISCIPLINES PRIOR TO INSTALLATION OF MECHANICAL COMPONENTS.

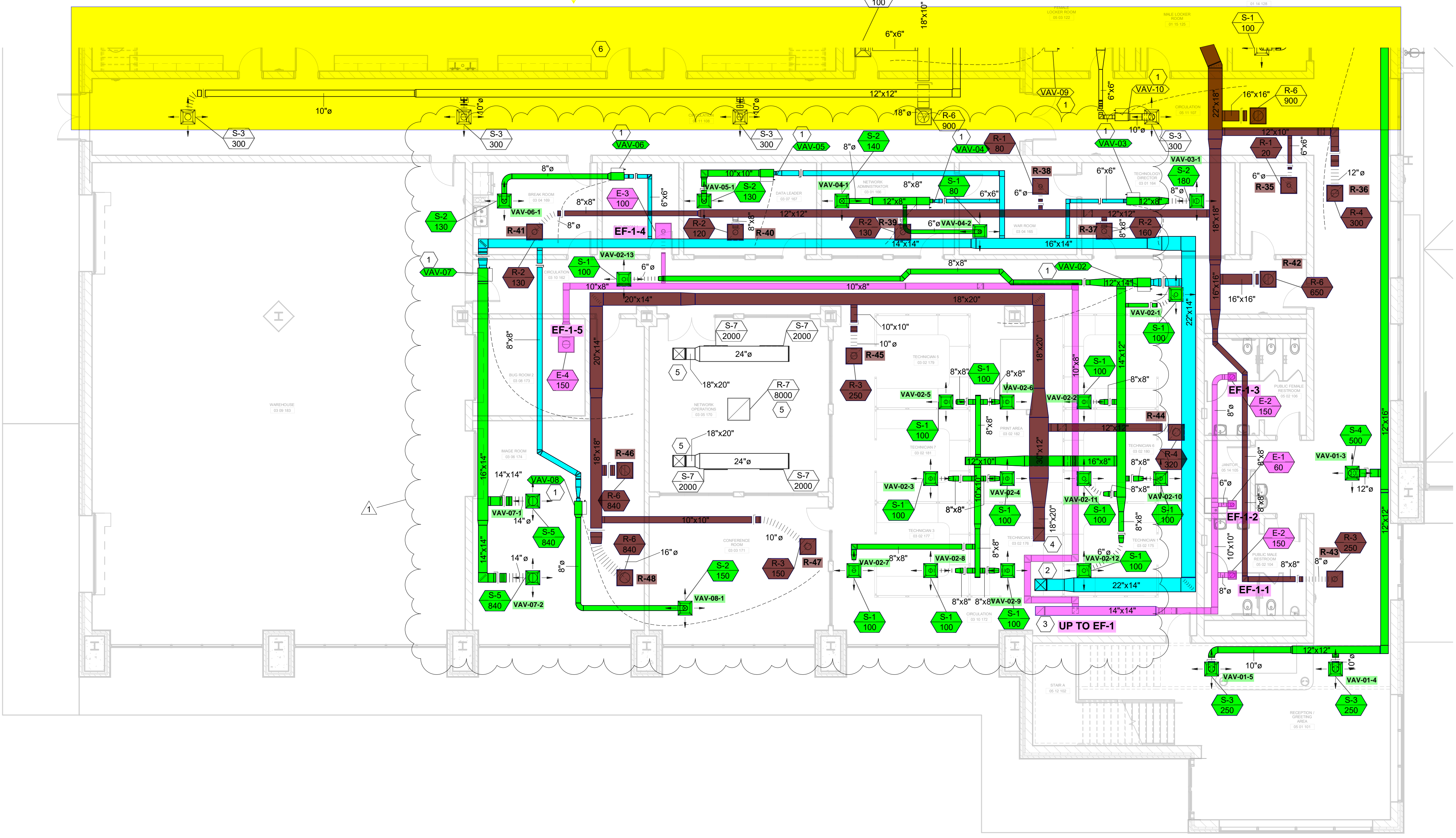
**SHEET KEYNOTES**

- FURNISH AND INSTALL VAV TERMINAL UNIT. MAINTAIN ALL MANUFACTURER'S REQUIRED CLEARANCES. SEE SCHEDULES AND DETAILS FOR MORE INFORMATION.
- SUPPLY DUCTWORK DOWN FROM SECOND LEVEL. SEE SHEET MH406 FOR CONTINUATION.
- PROVIDE DUCTWORK UP TO EF-01. SEE SHEET MH406 FOR CONTINUATION.
- PROVIDE RETURN DUCTWORK UP TO SECOND LEVEL. SEE SHEET MH406 FOR CONTINUATION.
- PROVIDE DUCTWORK UP TO CRAC UNITS ABOVE. SEE SHEET MH406 FOR CONTINUATION.
- HVAC CONTROL PANEL FOR HVLS FANS & GAS-FIRED RADIANT HEATERS. CONTROL WIRING SHALL BE PROVIDED UNDER DIVISION 23 CONTRACT.

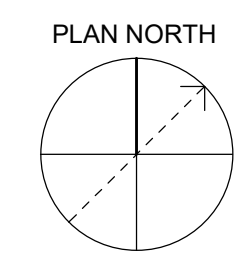
**AREA KEY PLAN**



**ON MH401**



**1 FIRST LEVEL - AREA B - HVAC PLAN**  
 SCALE: 1/8" = 1'-0"





GRW PROJECT NO. 09066-01  
 CLIENT PROJECT NO. BG 23-173  
 ALL RIGHTS RESERVED  
 THIS DOCUMENT IS THE PROPERTY OF GEOSPATIAL AND SHALL NOT BE REPRODUCED OR TRANSMITTED IN ANY FORM OR BY ANY MEANS, ELECTRONIC OR MECHANICAL, WITHOUT THE EXPRESS WRITTEN PERMISSION OF GEOSPATIAL.



ENGINEERING - ARCHITECTURE - GEOSPATIAL  
 www.grwinc.com

FIRST LEVEL - AREA C - HVAC PLAN  
 KENTON COUNTY SCHOOL DISTRICT SUPPORT OPERATIONS CENTER  
 11800 TAYLOR MILL ROAD, INDEPENDENCE, KY 41051

REVISIONS	DATE	BY	REVISION DESCRIPTION

DESIGNED:	JJS
DRAWN:	JJS
REVIEWED:	CVS
APPROVED:	CVS
DATE:	MARCH 30, 2023
SCALE:	1/8" = 1'-0"
SHEET NO.:	MH403

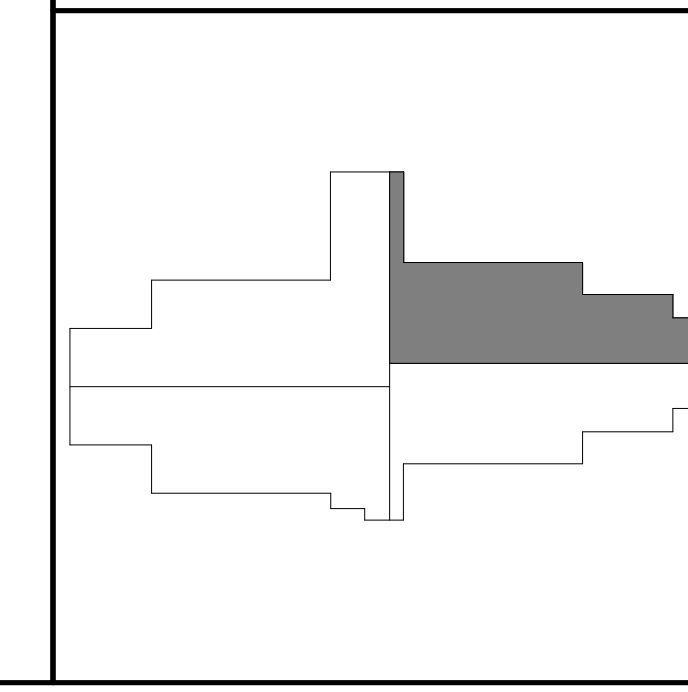
**GENERAL NOTES:**

- SEE SHEET M001 FOR MECHANICAL LEGEND AND GENERAL NOTES.
- COORDINATE WITH OTHER DISCIPLINES PRIOR TO INSTALLATION OF MECHANICAL COMPONENTS.

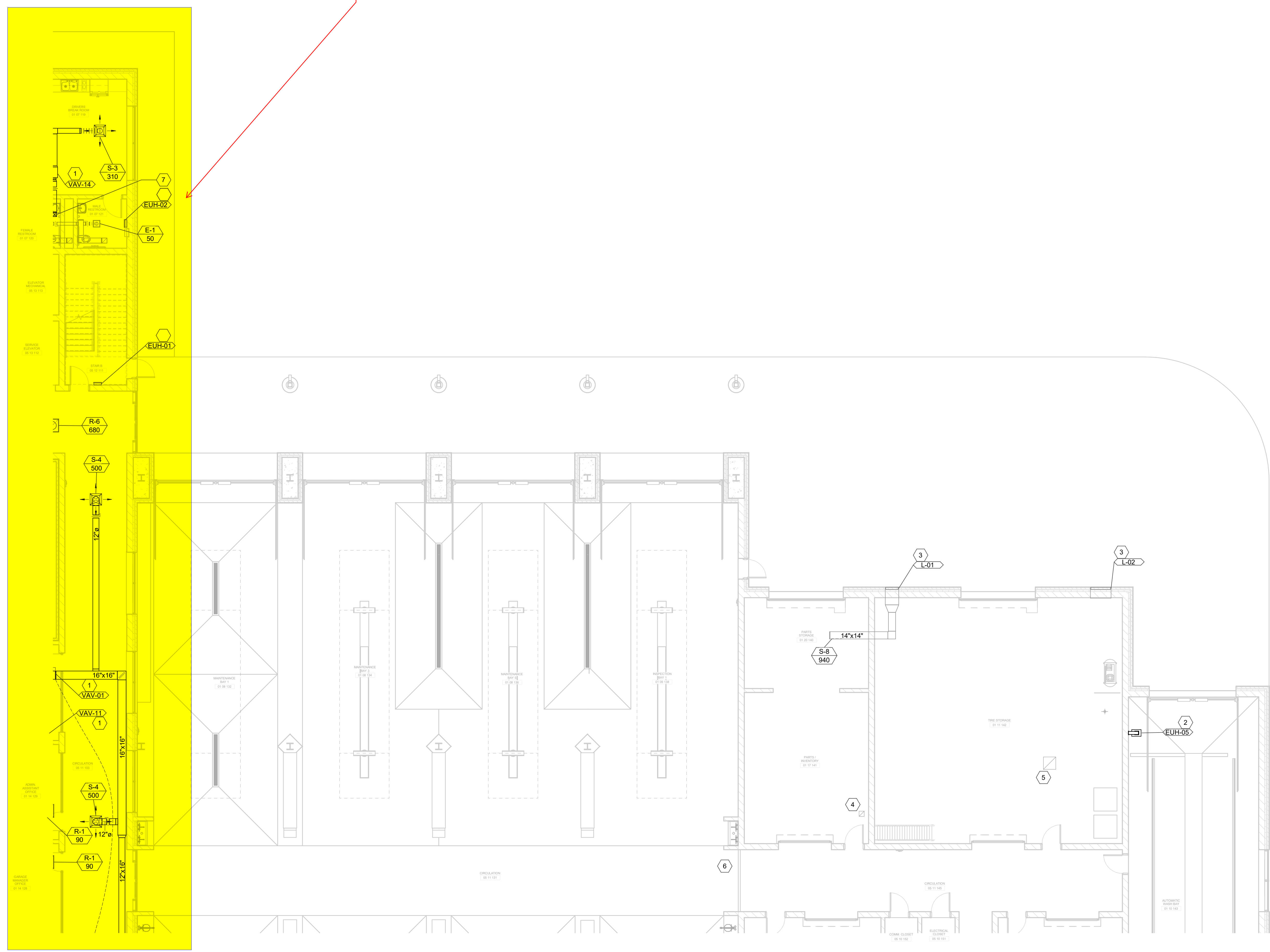
**SHEET KEYNOTES**

- FURNISH AND INSTALL VAV TERMINAL UNIT. MAINTAIN ALL MANUFACTURER'S REQUIRED CLEARANCES. SEE SCHEDULES AND DETAILS FOR MORE INFORMATION.
- FURNISH AND INSTALL CORROSION RESISTANT ELECTRIC UNIT HEATER. BASE OF UNIT SHALL BE 14" AFF. SEE SCHEDULES AND DETAILS FOR MORE INFORMATION.
- FURNISH AND INSTALL OPERABLE LOUVER. BASE OF LOUVER SHALL BE 13'-0" AFF. SEE SCHEDULES AND DETAILS FOR MORE INFORMATION.
- PROVIDE DUCTWORK UP TO EF-06. SEE SHEET MH407 FOR CONTINUATION.
- PROVIDE DUCTWORK UP TO EF-07. SEE SHEET MH407 FOR CONTINUATION.
- HVAC CONTROL PANEL FOR HVLS FANS & GAS-FIRED RADIANT HEATERS. CONTROL WIRING SHALL BE PROVIDED UNDER DIVISION 23 CONTRACT.
- SUPPLY DUCTWORK DOWN FROM SECOND LEVEL. SEE SHEET MH405 FOR CONTINUATION.

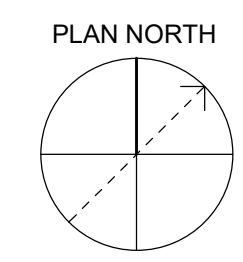
**AREA KEY PLAN**



**ON MH401**



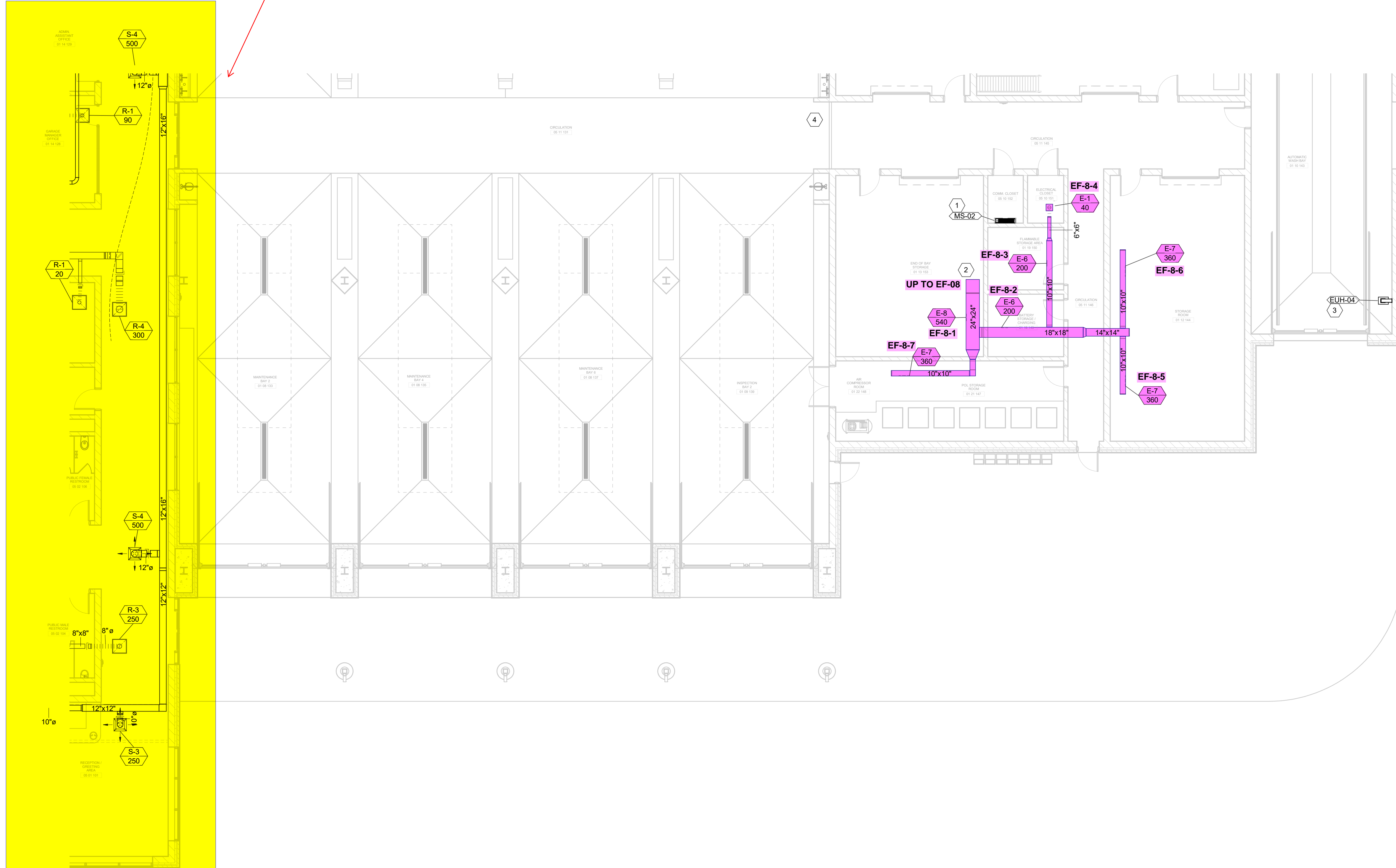
**1 FIRST LEVEL - AREA C - HVAC PLAN**  
 SCALE: 1/8" = 1'-0"



CONSTRUCTION DOCUMENTS

3/30/2023 4:52:48 PM C:\temp\hvac\Documents\09066\01\05\_MH403.dwg J. Jones

**ON MH402**



**GENERAL NOTES:**

- SEE SHEET M001 FOR MECHANICAL LEGEND AND GENERAL NOTES.
- COORDINATE WITH OTHER DISCIPLINES PRIOR TO INSTALLATION OF MECHANICAL COMPONENTS.

GRW PROJECT NO. 0908-01  
 CLIENT PROJECT NO. BG 23-173  
 ALL RIGHTS RESERVED. THIS DOCUMENT IS THE PROPERTY OF GEOSPATIAL. IT IS TO BE USED ONLY FOR THE PROJECT AND SHALL NOT BE REPRODUCED OR TRANSMITTED IN ANY FORM OR BY ANY MEANS, ELECTRONIC OR MECHANICAL, WITHOUT THE EXPRESS WRITTEN PERMISSION OF GEOSPATIAL.

**SHEET KEYNOTES**

- FURNISH AND INSTALL INDOOR WALL MOUNTED MINI SPLIT UNIT. BASE OF UNIT SHALL BE 7'-0" AFF. SEE SCHEDULES AND DETAILS FOR MORE INFORMATION.
- PROVIDE DUCTWORK UP TO EF-08, SEE SHEET MH408 FOR CONTINUATION.
- FURNISH AND INSTALL CORROSION RESISTANT ELECTRIC UNIT HEATER. BASE OF UNIT SHALL BE 14'-0". SEE SCHEDULES AND DETAILS FOR MORE INFORMATION.
- HVAC CONTROL PANEL FOR HVLS FANS & GAS-FIRED RADIANT HEATERS. CONTROL WIRING SHALL BE PROVIDED UNDER DIVISION 23 CONTRACT.

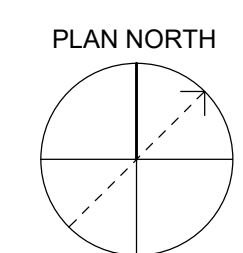
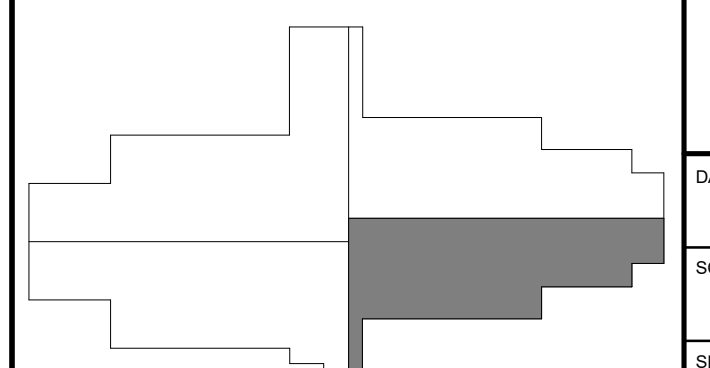
**GRW**  
 ENGINEERING - ARCHITECTURE - GEOSPATIAL  
 www.grwinc.com

**FIRST LEVEL - AREA D - HVAC PLAN**  
 KENTON COUNTY SCHOOL DISTRICT SUPPORT OPERATIONS CENTER  
 11800 TAYLOR MILL ROAD, INDEPENDENCE, KY 41051

DESIGNED:	JJS
DRAWN:	JJS
REVIEWED:	CVS
APPROVED:	CVS

REVISIONS	DATE	BY

**AREA KEY PLAN**



**1 FIRST LEVEL - AREA D - HVAC PLAN**  
 SCALE: 1/8" = 1'-0"

DATE: MARCH 30, 2023  
 SCALE: 1/8" = 1'-0"  
 SHEET NO. MH404

**GENERAL NOTES:**

- SEE SHEET M001 FOR MECHANICAL LEGEND AND GENERAL NOTES.
- COORDINATE WITH OTHER DISCIPLINES PRIOR TO INSTALLATION OF MECHANICAL COMPONENTS.

STATE OF KENTUCKY  
 CORY V. SKERRAD  
 REGISTERED PROFESSIONAL ENGINEER  
 LICENSE NO. 15483

GRV PROJECT NO. 05068-01  
 CLIENT PROJECT NO. BG 23-173

THIS DOCUMENT IS THE PROPERTY OF GEOSPATIAL. IT IS TO BE REPRODUCED IN WHOLE OR IN PART WITHOUT THE WRITTEN PERMISSION OF GEOSPATIAL.

CONSTRUCTION DOCUMENTS

**SHEET KEYNOTES**

- FURNISH AND INSTALL VAV TERMINAL UNIT. MAINTAIN ALL MANUFACTURER'S REQUIRED CLEARANCES. SEE SCHEDULES AND DETAILS FOR MORE INFORMATION.
- FURNISH AND INSTALL GAS FIRED UNIT HEATER. MAINTAIN MANUFACTURER'S RECOMMENDED CLEARANCES. SEE SCHEDULES AND DETAILS FOR MORE INFORMATION.
- FURNISH AND INSTALL GAS FIRED RADIANT HEATER. MAINTAIN MANUFACTURER'S RECOMMENDED CLEARANCES. SEE SCHEDULES AND DETAILS FOR MORE INFORMATION.
- FURNISH AND INSTALL HIGH VELOCITY, LOW SPEED FAN. MAINTAIN MANUFACTURER'S RECOMMENDED CLEARANCES FROM STRUCTURE AND LIGHTING. SEE SCHEDULES AND DETAILS FOR MORE INFORMATION.
- FURNISH AND INSTALL WALL-MOUNTED EXHAUST FAN. BASE OF FAN SHALL APPROXIMATELY BE 20'-0" AFF. SEE SCHEDULES AND DETAILS FOR MORE INFORMATION.
- FURNISH AND INSTALL OPERABLE LOUVER. BASE OF LOUVER SHALL APPROXIMATELY BE 20'-0" AFF. SEE SCHEDULES AND DETAILS FOR MORE INFORMATION.
- PROVIDE DUCTWORK UP TO EF-05. SEE SHEET MH101 FOR CONTINUATION.
- PROVIDE DUCTWORK UP TO EF-04. SEE SHEET MH101 FOR CONTINUATION.
- PROVIDE DUCTWORK UP TO EF-02. SEE SHEET MH101 FOR CONTINUATION.
- PROVIDE DUCTWORK UP TO EF-03. SEE SHEET MH101 FOR CONTINUATION.
- SUPPLY DUCTWORK DOWN FROM RTU-01. SEE SHEET MH101 FOR CONTINUATION.
- RETURN DUCTWORK UP TO RTU-01. SEE SHEET MH101 FOR CONTINUATION.
- FURNISH AND INSTALL WALL-MOUNTED ELECTRIC UNIT HEATER. BASE OF UNIT SHALL BE 3'-0" AFF. SEE SCHEDULES AND DETAILS FOR MORE INFORMATION.
- HVAC CONTROL PANEL. CONTROL WIRING SHALL BE PROVIDED UNDER DIVISION 23 CONTRACT. PROVIDE SECOND DATA DROP TO CONTROL PANEL FOR OWNER CONVENIENCE. SEE ELECTRICAL SHEETS FOR MORE INFORMATION.
- SUPPLY DUCTWORK DOWN TO FIRST LEVEL. SEE SHEET MH401 FOR CONTINUATION.
- FURNISH AND INSTALL FIRE DAMPER WHERE DUCTWORK PENETRATES THE FIRE-RATED WALL.

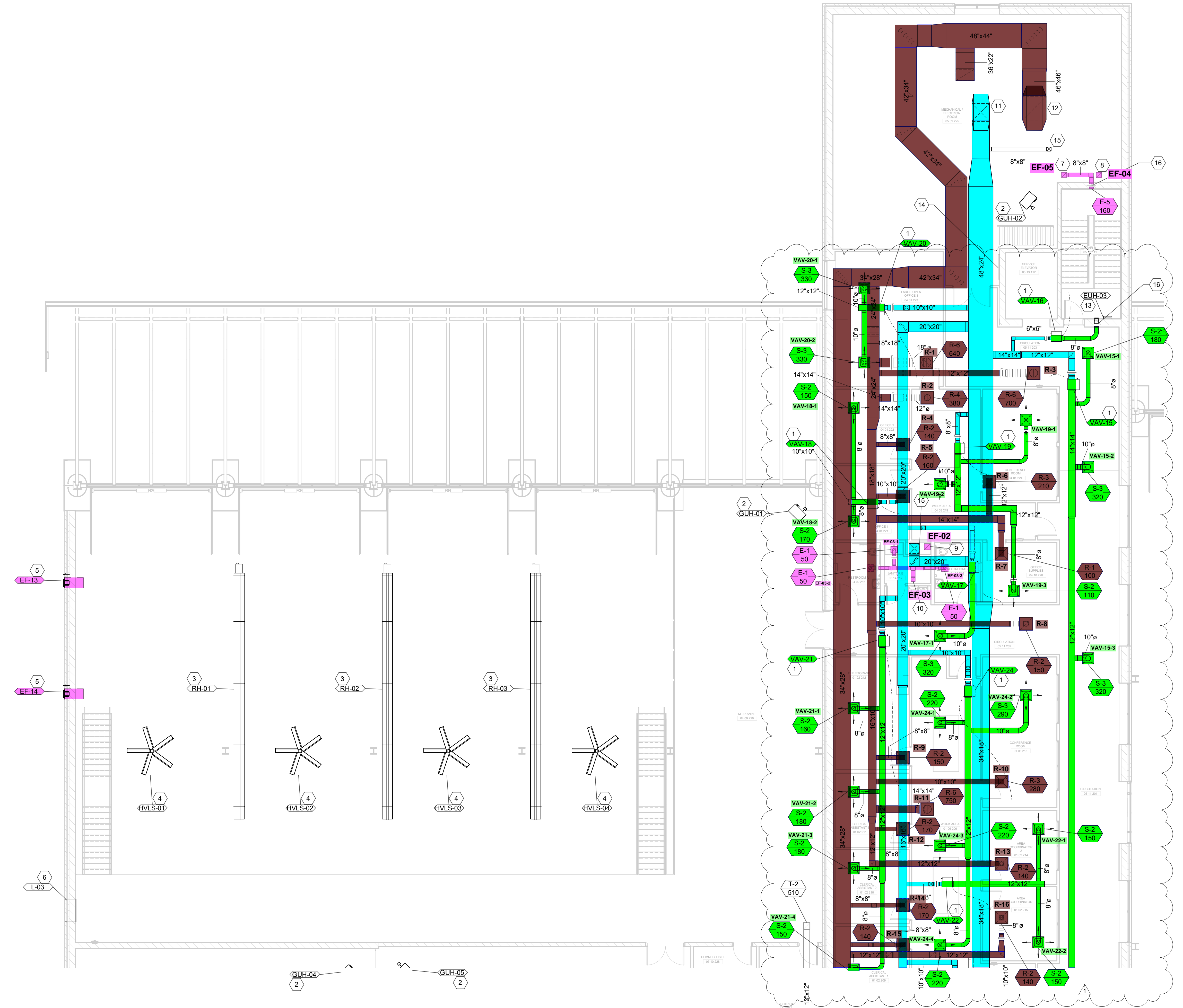
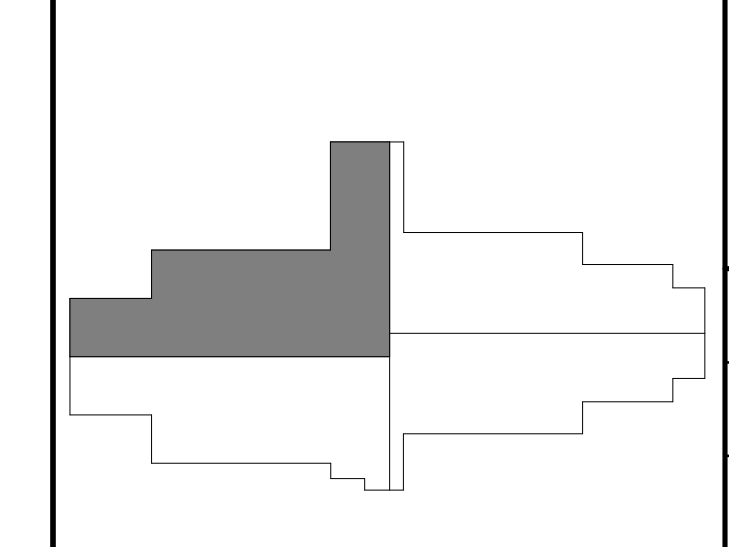
**GRV**

ENGINEERING - ARCHITECTURE - GEOSPATIAL  
 www.grv.us.com

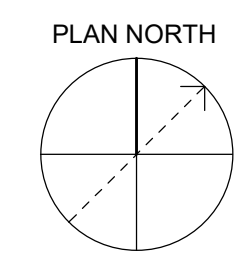
**SECOND LEVEL - AREA A - HVAC PLAN**  
 KENTON COUNTY SCHOOL DISTRICT SUPPORT OPERATIONS CENTER  
 11800 TAYLOR MILL ROAD, INDEPENDENCE, KY 41051

REVISIONS	DATE	BY	CHKD	APP'D
1	03/30/23	JJS	JJS	CVS
2				
3				
4				
5				
6				
7				
8				
9				
10				
11				
12				
13				
14				
15				
16				

**AREA KEY PLAN**



**1 SECOND LEVEL - AREA A - HVAC PLAN**  
 SCALE: 1/8" = 1'-0"



DATE: MARCH 30, 2023  
 SCALE: 1/8" = 1'-0"  
 SHEET NO: MH405 X1

15/03/2023 10:52 AM C:\Users\jsherriff\Documents\150323\150323-01\150323-01-Arch\150323-01-Arch.dwg

GENERAL NOTES:

- SEE SHEET M001 FOR MECHANICAL LEGEND AND GENERAL NOTES.
- COORDINATE WITH OTHER DISCIPLINES PRIOR TO INSTALLATION OF MECHANICAL COMPONENTS.

STATE OF KENTUCKY  
 CORY V. SKERRARD  
 REGISTERED PROFESSIONAL ENGINEER  
 LICENSE NO. 15183

GRW PROJECT NO. 0506-01  
 CLIENT PROJECT NO. BG 23-173

THIS DOCUMENT IS THE PROPERTY OF GEOSPATIAL. IT IS TO BE REPRODUCED IN WHOLE OR IN PART WITHOUT THE WRITTEN PERMISSION OF GEOSPATIAL.

SHEET KEYNOTES

- FURNISH AND INSTALL VAV TERMINAL UNIT. MAINTAIN ALL MANUFACTURER'S REQUIRED CLEARANCES. SEE SCHEDULES AND DETAILS FOR MORE INFORMATION.
- FURNISH AND INSTALL OPERABLE LOUVER. BASE OF LOUVER SHALL APPROXIMATELY BE 2'-0" AFF. SEE SCHEDULES AND DETAILS FOR MORE INFORMATION.
- FURNISH AND INSTALL INDOOR WALL MOUNTED MINI SPLIT UNIT. BASE OF UNIT SHALL BE 7'-4" AFF. SEE SCHEDULES AND DETAILS FOR MORE INFORMATION.
- FURNISH AND INSTALL INDOOR COMPUTER ROOM AIR CONDITIONER UNIT. SEE SCHEDULES AND DETAILS FOR MORE INFORMATION.
- FURNISH AND INSTALL GAS FIRED UNIT HEATER. MAINTAIN MANUFACTURER'S RECOMMENDED CLEARANCES. SEE SCHEDULES AND DETAILS FOR MORE INFORMATION.
- FURNISH AND INSTALL WALL MOUNTED EXHAUST FAN. BASE OF FAN SHALL APPROXIMATELY BE 2'-0" AFF. SEE SCHEDULES AND DETAILS FOR MORE INFORMATION.
- RETURN DUCTWORK UP FROM FIRST LEVEL. SEE SHEET MH402 FOR CONTINUATION.
- EXHAUST DUCTWORK UP FROM FIRST LEVEL. SEE SHEET MH402 FOR CONTINUATION.
- SUPPLY DUCTWORK DOWN TO FIRST LEVEL. SEE SHEET MH402 FOR CONTINUATION.
- RETURN DUCTWORK UP FROM NETWORK OPERATIONS CENTER. SEE SHEET MH402 FOR CONTINUATION. PROVIDE AND INSTALL FIRE DAMPER IN DUCTWORK AT FLOOR PENETRATION. SEE MECHANICAL CONTROL SHEETS FOR MORE INFORMATION.
- PROVIDE AND INSTALL CONTROL DAMPERS FOR COMPUTER ROOM AIR CONDITIONER DUCTWORK. SEE MECHANICAL CONTROL SHEETS FOR MORE INFORMATION.
- SUPPLY DUCTWORK DOWN TO NETWORK OPERATIONS CENTER. SEE SHEET MH402 FOR CONTINUATION. PROVIDE AND INSTALL FIRE DAMPER IN DUCTWORK AT FLOOR PENETRATION. SEE MECHANICAL CONTROL SHEETS FOR MORE INFORMATION.
- FURNISH AND INSTALL HIGH VELOCITY, LOW SPEED FAN. MAINTAIN MANUFACTURER'S RECOMMENDED CLEARANCES FROM STRUCTURE AND LIGHTING. SEE SCHEDULES AND DETAILS FOR MORE INFORMATION.

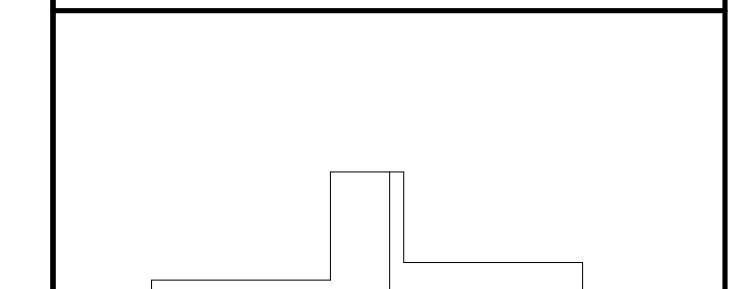
GEOSPATIAL  
 ENGINEERING - ARCHITECTURE - GEOSPATIAL  
 www.geospatial.com

SECOND LEVEL - AREA B - HVAC PLAN  
 KENTON COUNTY SCHOOL DISTRICT SUPPORT OPERATIONS CENTER  
 11800 TAYLOR MILL ROAD, INDEPENDENCE, KY 41051

DESIGNED:	JJS
DRAWN:	JJS
REVIEWED:	CVS
APPROVED:	CVS

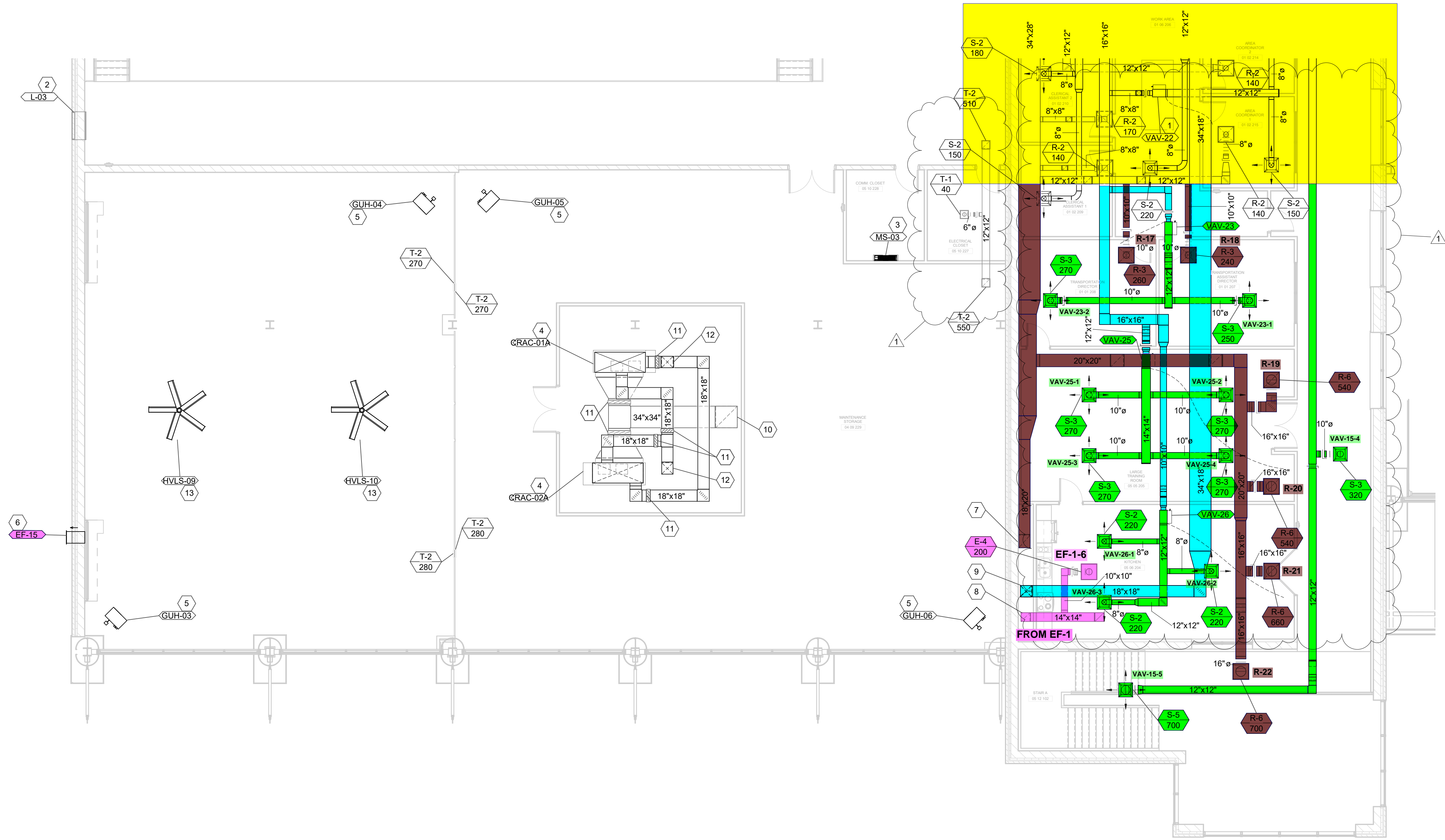
NO.	REVISIONS	DATE	BY

AREA KEY PLAN

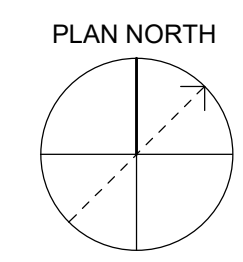


DATE: MARCH 30, 2023  
 SCALE: 1/8" = 1'-0"  
 SHEET NO: MH406 X1

ON MH405



1 SECOND LEVEL - AREA B - HVAC PLAN  
 SCALE: 1/8" = 1'-0"





GENERAL NOTES:

- SEE SHEET M001 FOR MECHANICAL LEGEND AND GENERAL NOTES.
- COORDINATE WITH OTHER DISCIPLINES PRIOR TO INSTALLATION OF MECHANICAL COMPONENTS.

GRV PROJECT NO. 0606/01  
 CLIENT PROJECT NO. BG 23-173  
 ALL RIGHTS RESERVED.  
 THIS DOCUMENT IS THE PROPERTY OF GEOSPATIAL. IT IS TO BE REPRODUCED OR TRANSMITTED IN ANY FORM OR BY ANY MEANS, ELECTRONIC OR MECHANICAL, WITHOUT THE SPECIFIC WRITTEN PERMISSION OF GEOSPATIAL.

SHEET KEYNOTES

- FURNISH AND INSTALL HIGH VELOCITY, LOW SPEED FAN. MAINTAIN MANUFACTURER'S RECOMMENDED CLEARANCES FROM STRUCTURE AND LIGHTING. SEE SCHEDULES AND DETAILS FOR MORE INFORMATION.
- FURNISH AND INSTALL NEW ROOF MOUNTED OUTDOOR MINI SPLIT UNIT. SEE SCHEDULES AND DETAILS FOR MORE INFORMATION. INSTALL PER MANUFACTURER'S RECOMMENDATION.
- FURNISH AND INSTALL NEW ROOF MOUNTED GRAVITY INTAKE HOOD. SEE SCHEDULES AND DETAILS FOR MORE INFORMATION. INSTALL PER MANUFACTURER'S RECOMMENDATION.
- FURNISH AND INSTALL GAS FIRED RADIANT HEATER. MAINTAIN MANUFACTURER'S RECOMMENDED CLEARANCES. SEE SCHEDULES AND DETAILS FOR MORE INFORMATION.
- FURNISH AND INSTALL WALL MOUNTED EXHAUST FAN. BASE OF FAN SHALL APPROXIMATELY BE 22'-0" AFF. SEE SCHEDULES AND DETAILS FOR MORE INFORMATION.
- FURNISH AND INSTALL NEW ROOF MOUNTED EXHAUST FAN. SEE SCHEDULES AND DETAILS FOR MORE INFORMATION. INSTALL PER MANUFACTURER'S RECOMMENDATION.

ENGINEERING - ARCHITECTURE - GEOSPATIAL  
 www.grvinc.com

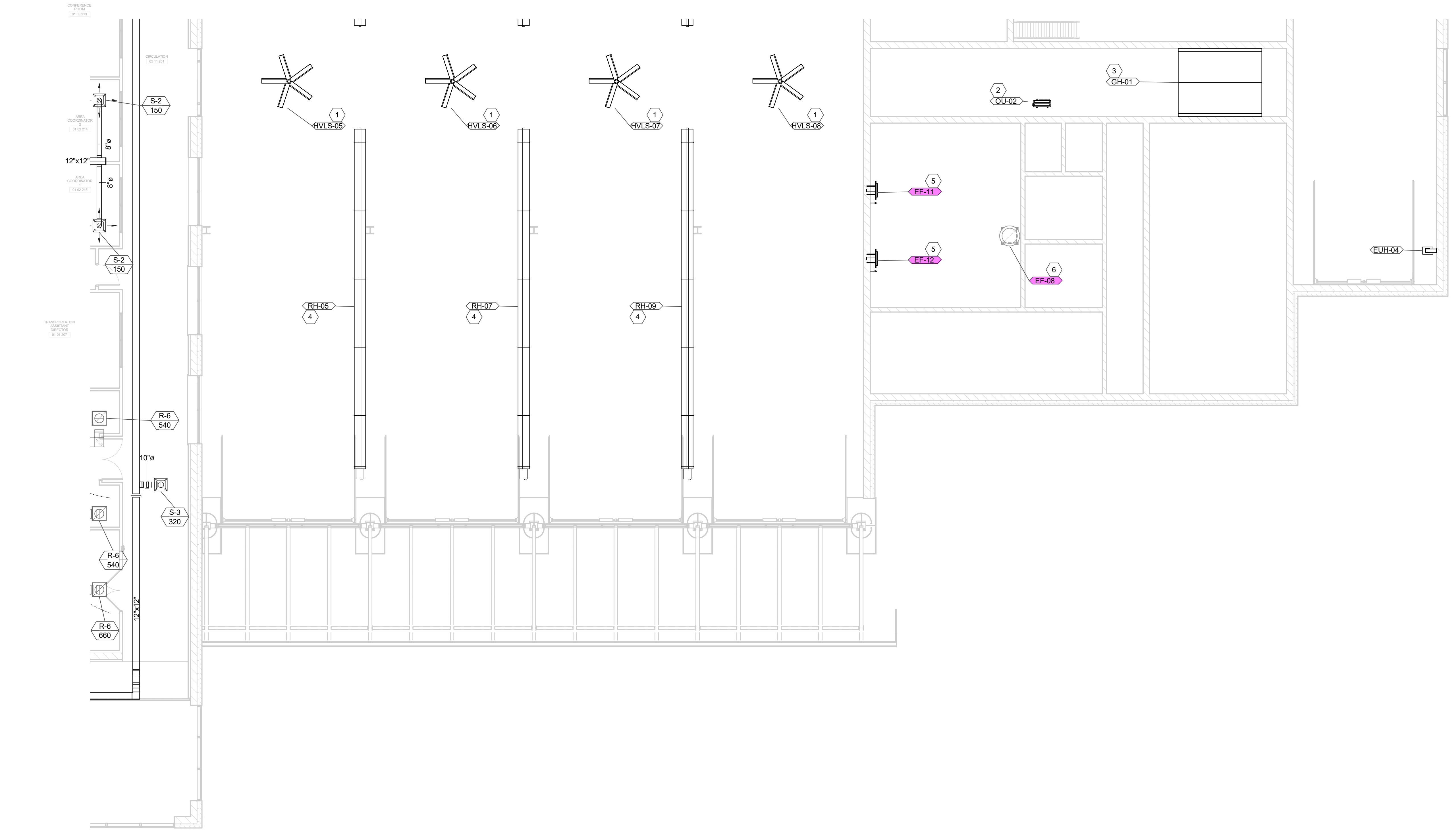
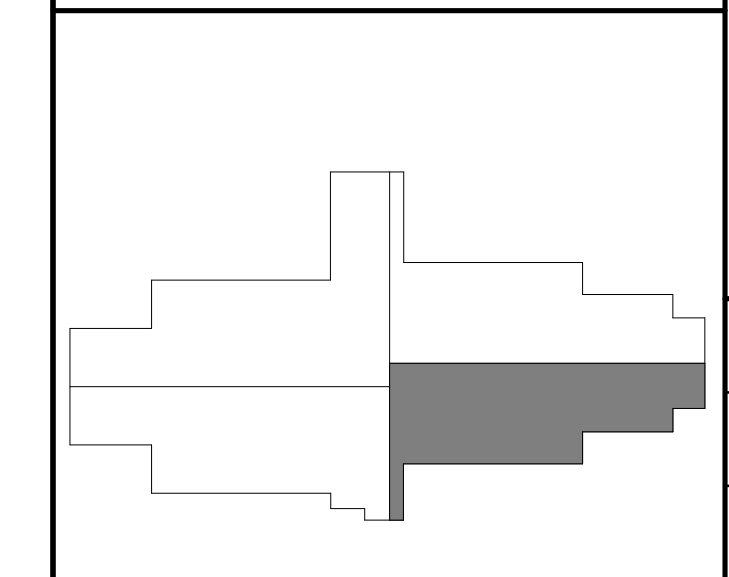
SECOND LEVEL - AREA D - HVAC PLAN  
 KENTON COUNTY SCHOOL DISTRICT SUPPORT OPERATIONS CENTER  
 11800 TAYLOR MILL ROAD, INDEPENDENCE, KY 41051

DESIGNED:	JJS
DRAWN:	JJS
REVIEWED:	CVS
APPROVED:	CVS

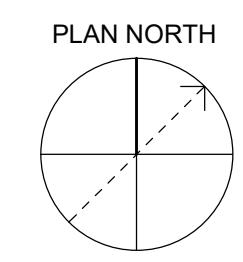
NO.	DATE	BY	REVISIONS

USING THIS DRAWING SHALL BE DONE EXACTLY AS SHOWN

AREA KEY PLAN



**1** SECOND LEVEL - AREA D - HVAC PLAN  
 SCALE: 1/8" = 1'-0"



DATE: MARCH 30, 2023  
 SCALE: 1/8" = 1'-0"  
 SHEET NO. MH408

3/31/2023 4:52 AM C:\temp\hvac\Documents\2023\MC51705\_2ndLevel\2ndLevel.dwg

**GENERAL NOTES:**

- SEE SHEET M001 FOR MECHANICAL LEGEND AND GENERAL NOTES.
- COORDINATE WITH OTHER DISCIPLINES PRIOR TO INSTALLATION OF MECHANICAL COMPONENTS.

GRW PROJECT NO. 0908/01  
CLIENT PROJECT NO. BG 23-173

THIS DOCUMENT IS THE PROPERTY OF GEOSPATIAL. IT IS TO BE USED ONLY FOR THE PROJECT AND SITE SPECIFIC PRODUCT IDENTIFIED HEREIN. IT IS NOT TO BE REPRODUCED OR TRANSMITTED IN ANY FORM OR BY ANY MEANS, ELECTRONIC OR MECHANICAL, INCLUDING PHOTOCOPYING, RECORDING, OR BY ANY INFORMATION STORAGE AND RETRIEVAL SYSTEM.

**SHEET KEYNOTES**

- FURNISH AND INSTALL GAS FIRED UNIT HEATER. MAINTAIN MANUFACTURER'S RECOMMENDED CLEARANCES. SEE SCHEDULES AND DETAILS FOR MORE INFORMATION.
- FURNISH AND INSTALL WALL-MOUNTED EXHAUST FAN. BASE OF FAN SHALL APPROXIMATELY BE 10'-0" AFF. SEE SCHEDULES AND DETAILS FOR MORE INFORMATION.
- FURNISH AND INSTALL OPERABLE LOUVER. BASE OF LOUVER SHALL APPROXIMATELY BE 10'-0" AFF. SEE SCHEDULES AND DETAILS FOR MORE INFORMATION.

www.grwinc.com

**WAREHOUSE ALTERNATE - MECHANICAL PLAN**  
KENTON COUNTY SCHOOL DISTRICT SUPPORT OPERATIONS CENTER  
11800 TAYLOR MILL ROAD, INDEPENDENCE, KY 41051

DESIGNED:	JJS
DRAWN:	JJS
REVIEWED:	CVS
APPROVED:	CVS

NO.	REVISIONS	DATE	BY

DATE:	MARCH 30, 2023
SCALE:	1/8" = 1'-0"
SHEET NO.:	MK401

**EXHAUST FAN SCHEDULE**

MARK	MANUFACTURER	MODEL	CFM	ESP (IN H2O)	SONES	DRIVE TYPE	RPM	V/PHHZ	HP	FLA	REMARKS
EF-16	GREENHECK	CUE-090-VG	200	0.13 in-wg	1.4	Direct	738	115/1/60	0.10	2 A	ALL

- REMARKS:
- PROVIDE WITH UNIT MOUNTED DISCONNECT.
  - PROVIDE WITH MOTORIZED DAMPER.
  - OPERATION OF EXHAUST FAN SHALL BE INTERLOCKED WITH THE OPERATION OF THE LIGHTING FOR THE WAREHOUSE.
  - CONNECT EXHAUST FAN TO DDC MONITORING SYSTEM. PROVIDE FAN STATUS PARAMETER TO SYSTEM.
- OTHER ACCEPTABLE MANUFACTURERS INCLUDE: RUSKIN, UNITED ENTERTECH. REFER TO SPECIFICATIONS FOR ADDITIONAL REQUIREMENTS.

**LOUVER SCHEDULE**

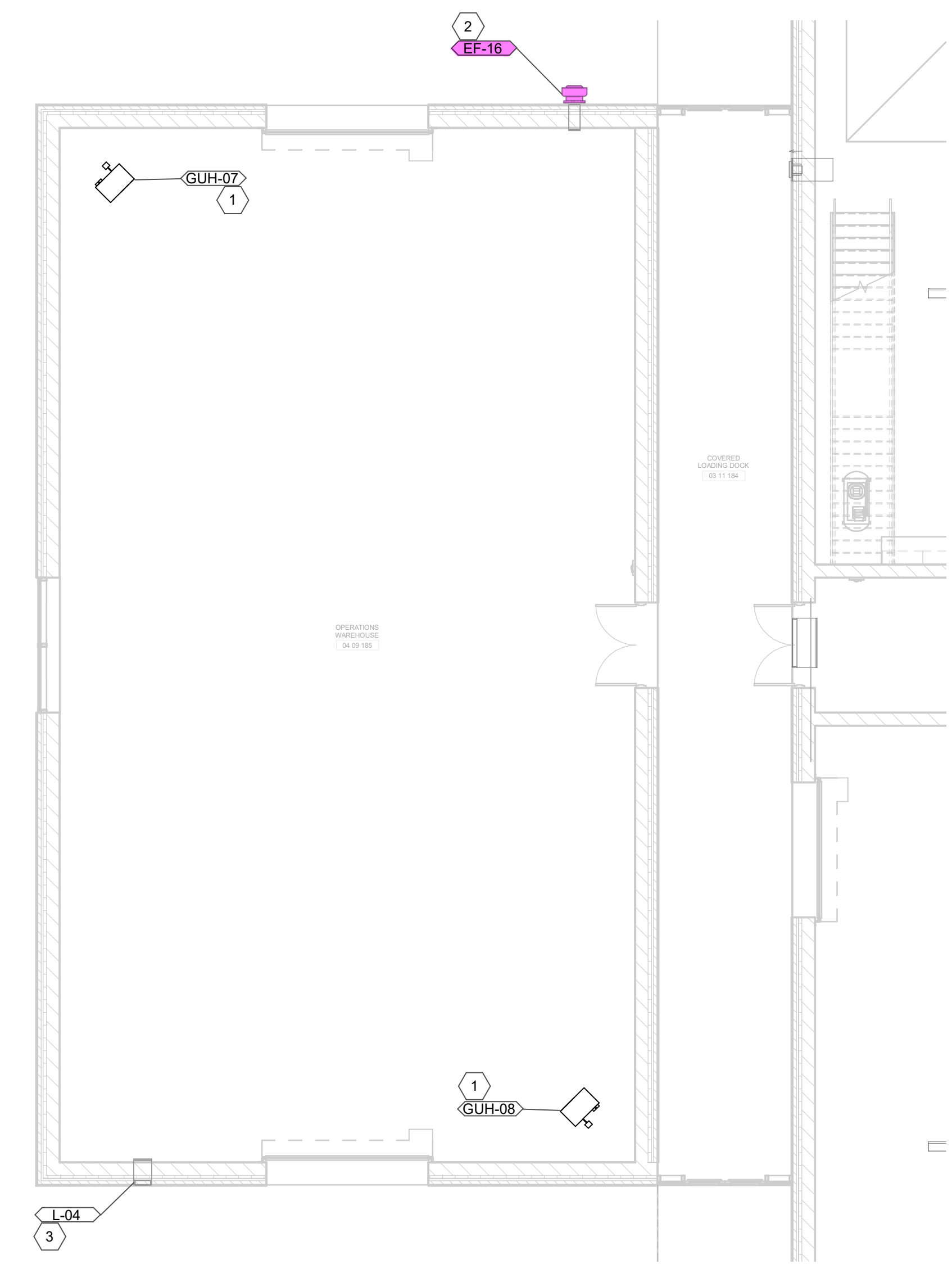
MARK	MANUFACTURER	MODEL	INTAKE/EXHAUST	WIDTH	HEIGHT	DEPTH	CFM	PRESSURE DROP (IN)	FREE AREA (SQ.FT.)	VELOCITY (FPM)	REMARKS
L-04	GREENHECK	ECD-401	Intake	1'-4"	1'-0"	0'-4"	200	0.038	0.4	473	ALL

- REMARKS:
- LOUVER COLOR SELECTED BY ARCHITECT.
  - COORDINATE ALL LOUVER LOCATIONS WITH ARCHITECT AND ENGINEER PRIOR TO INSTALLATION.
  - ALUMINUM CONSTRUCTION.
  - DRAINABLE BLADES.
  - PROVIDE INSECT SCREEN.
  - PROVIDE WITH FACTORY MOUNTED DAMPER ACTUATOR. CONTROLS CONTRACTOR SHALL PROVIDE REQUIRED POWER TO ACTUATOR.
  - INTERLOCK OPERATION OF DAMPER WITH EF-16.
- OTHER ACCEPTABLE MANUFACTURERS INCLUDE: CARNES, COOK. REFER TO SPECIFICATIONS FOR ADDITIONAL REQUIREMENTS.

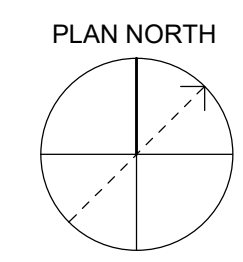
**GAS FIRED UNIT HEATER**

MARK	MANUFACTURER	MODEL	CFM	INPUT (MBH)	OUTPUT (MBH)	HP	AMPS	FLUE SIZE	V/PHHZ	MCA	MOCP	REMARKS
GUH-07	REZNOR	UBX	759	45	36.9	1/6	3.7	4	115/1/60	5.6	15	ALL
GUH-08	REZNOR	UBX	759	45	36.9	1/6	3.7	4	115/1/60	5.6	15	ALL

- REMARKS:
- HORIZONTAL GAS FIRED UNIT HEATER.
  - PROVIDE FLUE AS REQUIRED BY MANUFACTURER AND ROUTE PER PLANS.
  - PROVIDE WALL MOUNTED THERMOSTAT.
  - INSTALL AS HIGH AS POSSIBLE.
- OTHER ACCEPTABLE MANUFACTURERS INCLUDE: TRANE, MODINE. REFER TO SPECIFICATIONS FOR ADDITIONAL REQUIREMENTS.

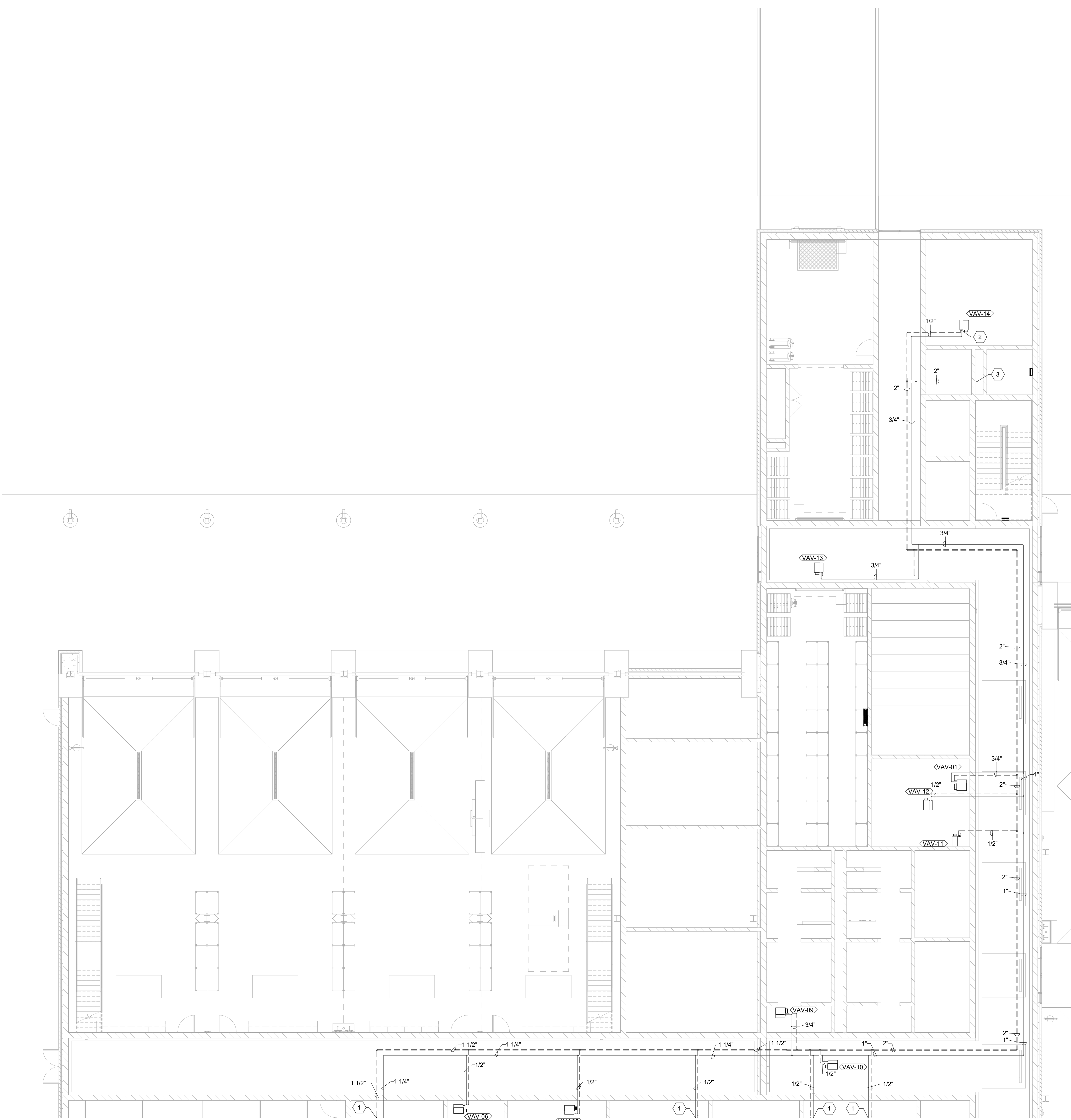


**1 FIRST LEVEL - WAREHOUSE ALTERNATE - MECHANICAL PLAN**  
SCALE: 1/8" = 1'-0"



**1** FIRST LEVEL - AREA A - MECHANICAL PIPING PLAN

SCALE: 1/8" = 1'-0"



**GENERAL NOTES:**

- SEE SHEET M001 FOR MECHANICAL LEGENDS AND GENERAL NOTES.
- COORDINATE WITH OTHER DISCIPLINES PRIOR TO INSTALLATION OF MECHANICAL COMPONENTS.

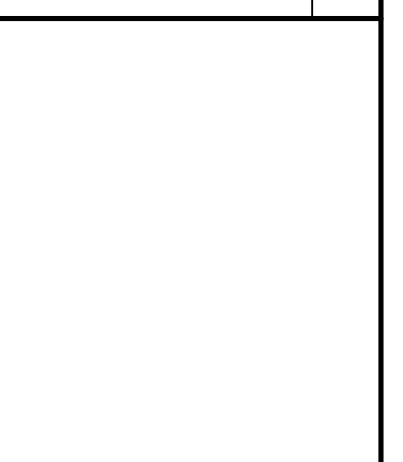
GRW PROJECT NO. 0908/01

CLIENT PROJECT NO. BG 23-173

ALL RIGHTS RESERVED. THIS DOCUMENT IS THE PROPERTY OF GEOSPATIAL. IT IS TO BE REPRODUCED IN WHOLE OR IN PART WITHOUT THE WRITTEN PERMISSION OF GEOSPATIAL.

**SHEET KEYNOTES**

- SEE SHEET MP402 FOR CONTINUATION.
- CONNECT HOT WATER SUPPLY AND RETURN PIPING TO NEW VAV BOX. SEE DETAIL FOR CONNECTION INFORMATION. TYPICAL.
- HYDRONIC PIPING UP TO SECOND FLOOR. SEE SHEET MP405 FOR CONTINUATION.



**FIRST LEVEL - AREA A - MECHANICAL PIPING PLAN**

KENTON COUNTY SCHOOL DISTRICT SUPPORT OPERATIONS CENTER

11800 TAYLOR MILL ROAD, INDEPENDENCE, KY 41051

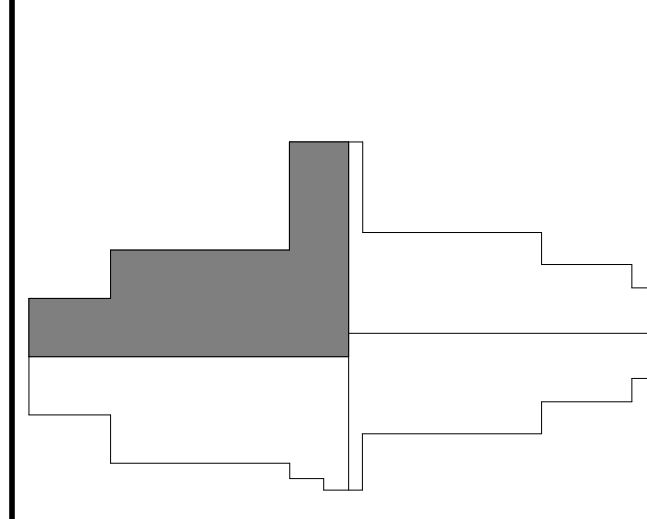
DESIGNED:	STAFF
DRAWN:	STAFF
REVIEWED:	CVS
APPROVED:	CVS

REVISIONS	DATE	BY

THIS DRAWING SHOULD BE MEASURED EXACTLY AS SHOWN/NOTED

SCALE: AS SHOWN

**AREA KEY PLAN**



DATE:	MARCH 30, 2023
SCALE:	1/8" = 1'-0"
SHEET NO.:	MP401

**GENERAL NOTES:**

- SEE SHEET M001 FOR MECHANICAL LEGENDS AND GENERAL NOTES.
- COORDINATE WITH OTHER DISCIPLINES PRIOR TO INSTALLATION OF MECHANICAL COMPONENTS.

GRW PROJECT NO. 0908/01  
 CLIENT PROJECT NO. BG 23-173  
 ALL RIGHTS RESERVED.  
 THIS DOCUMENT IS THE PROPERTY OF GEOSPATIAL. IT IS TO BE REPRODUCED IN WHOLE OR IN PART WITHOUT THE WRITTEN PERMISSION OF GEOSPATIAL.

**SHEET KEYNOTES**

- SEE SHEET MP401 FOR CONTINUATION.
- CONNECT HOT WATER SUPPLY AND RETURN PIPING TO NEW VAV BOX. SEE DETAIL FOR CONNECTION INFORMATION. TYPICAL.
- HYDRONIC PIPING UP TO SECOND FLOOR. SEE SHEET MP406 FOR CONTINUATION.

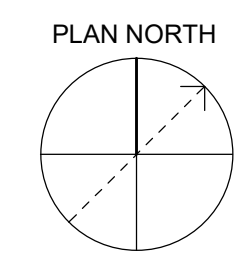
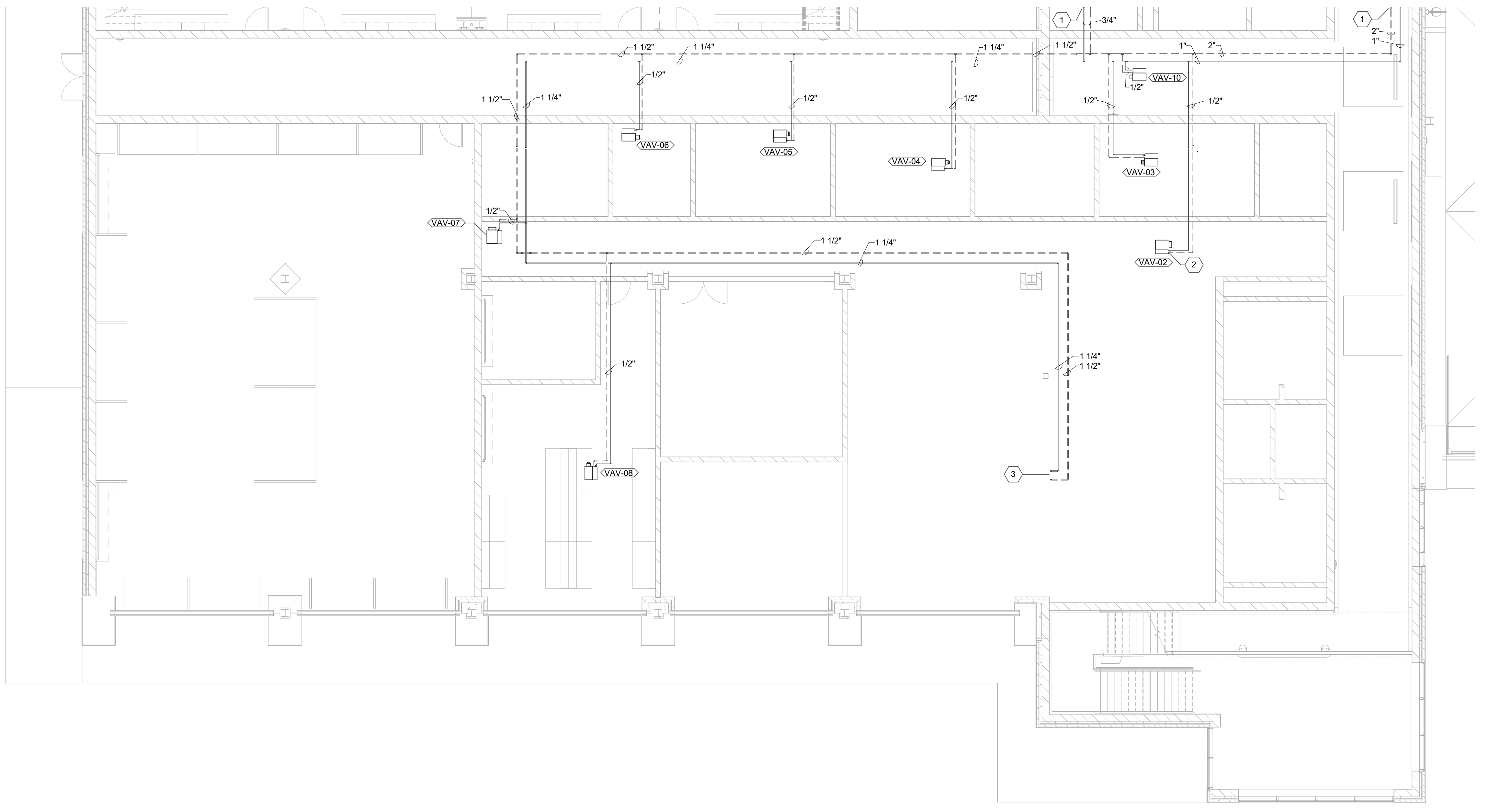
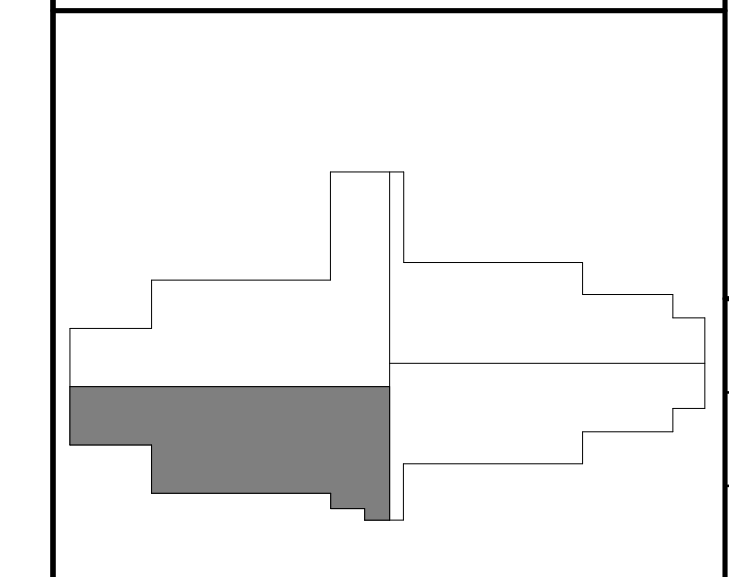
www.grwinc.com  
 ENGINEERING - ARCHITECTURE - GEOSPATIAL

**FIRST LEVEL - AREA B - MECHANICAL PIPING PLAN**  
 KENTON COUNTY SCHOOL DISTRICT SUPPORT OPERATIONS CENTER  
 11800 TAYLOR MILL ROAD, INDEPENDENCE, KY 41051

DESIGNED:	STAFF
DRAWN:	STAFF
REVIEWED:	CVS
APPROVED:	CVS

NO.	REVISIONS	DATE

**AREA KEY PLAN**



**1 FIRST LEVEL - AREA B - MECHANICAL PIPING PLAN**  
 SCALE: 1/8" = 1'-0"

DATE:	MARCH 30, 2023
SCALE:	1/8" = 1'-0"
SHEET NO.:	MP402

**GENERAL NOTES:**

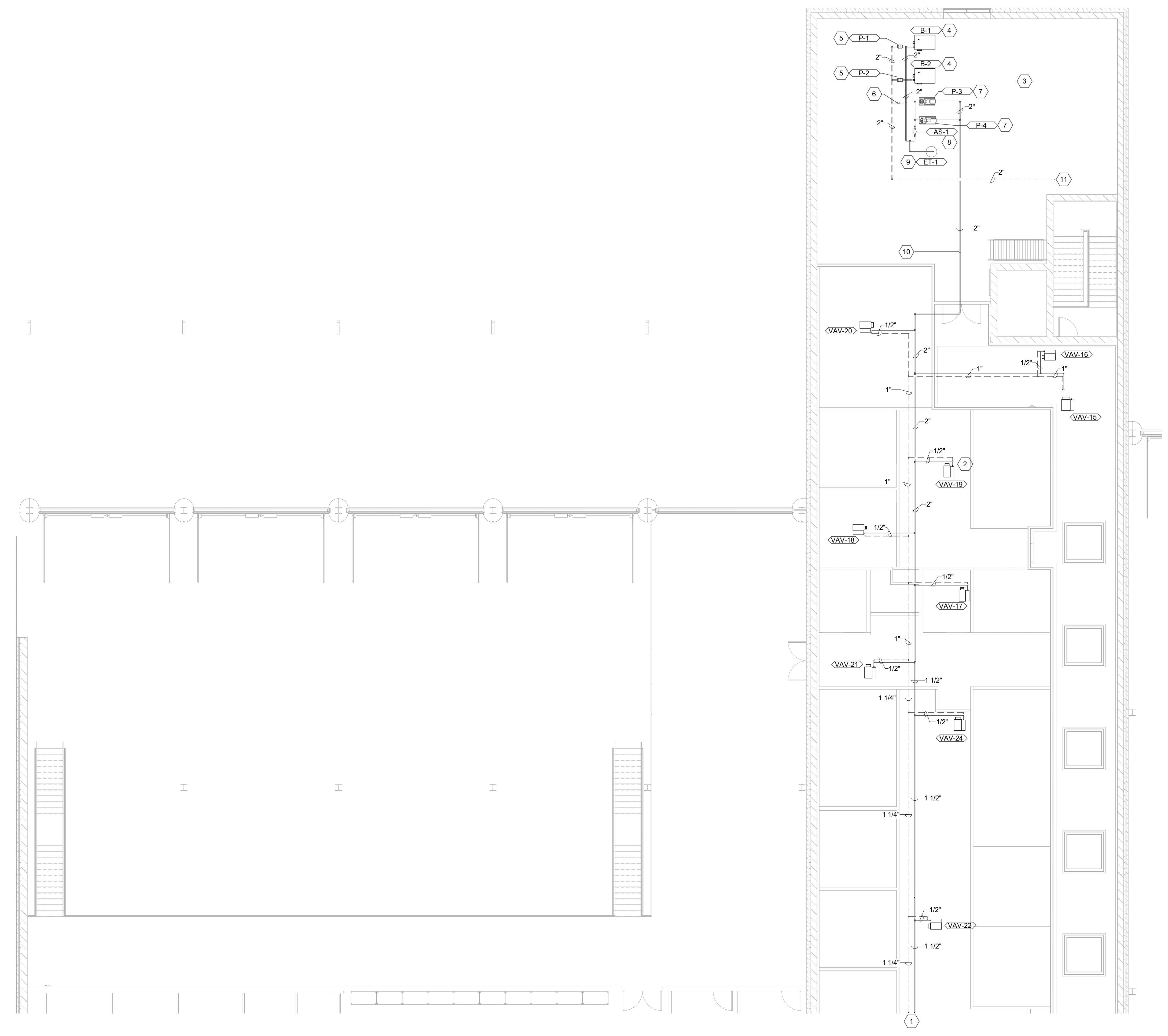
- SEE SHEET M001 FOR MECHANICAL LEGEND AND GENERAL NOTES.
- COORDINATE WITH OTHER DISCIPLINES PRIOR TO INSTALLATION OF MECHANICAL COMPONENTS.

GRW PROJECT NO. 0908/01  
 CLIENT PROJECT NO. BG 23-173  
 ALL RIGHTS RESERVED.  
 THIS DOCUMENT IS THE PROPERTY OF GEOSPATIAL AND SHALL BE REPRODUCED IN WHOLE OR IN PART WITHOUT THE WRITTEN PERMISSION OF GEOSPATIAL.

**SHEET KEYNOTES**

- SEE SHEET MP406 FOR CONTINUATION.
- CONNECT HOT WATER SUPPLY AND RETURN PIPING TO NEW VAV BOX. SEE DETAIL FOR CONNECTION INFORMATION. TYPICAL.
- SEE SCHEMATIC MECHANICAL ROOM PIPING DIAGRAM DETAIL FOR MORE INFORMATION.
- FURNISH AND INSTALL NEW GAS-FIRED BOILER. INSTALL PER MANUFACTURER'S RECOMMENDATION. PROVIDE WITH 6" HOUSEKEEPING PAD. SEE DETAILS AND SCHEDULES FOR MORE INFORMATION.
- FURNISH AND INSTALL NEW INLINE BOILER CIRCULATING PUMP. INSTALL PER MANUFACTURER'S RECOMMENDATION. SEE DETAILS AND SCHEDULES FOR MORE INFORMATION.
- BYPASS PIPING WITH CHECK VALVE.
- FURNISH AND INSTALL NEW BASE MOUNTED ZONE PUMP. INSTALL PER MANUFACTURER'S RECOMMENDATION. PROVIDE WITH 6" HOUSEKEEPING PAD. SEE DETAILS AND SCHEDULES FOR MORE INFORMATION.
- FURNISH AND INSTALL NEW AIR SEPARATOR. INSTALL PER MANUFACTURER'S RECOMMENDATION. MOUNT AS HIGH AS POSSIBLE. SEE DETAILS AND SCHEDULES FOR MORE INFORMATION.
- FURNISH AND INSTALL NEW EXPANSION TANK. INSTALL PER MANUFACTURER'S RECOMMENDATION. PROVIDE WITH 6" HOUSEKEEPING PAD. SEE DETAILS AND SCHEDULES FOR MORE INFORMATION.
- PIPING TO MAKE-UP WATER STATION. SEE DETAIL FOR MORE INFORMATION.
- HYDRONIC PIPING DOWN TO FIRST FLOOR. SEE SHEET MP401 FOR CONTINUATION.

**GIR**  
 ENGINEERING - ARCHITECTURE - GEOSPATIAL  
 www.girinc.com

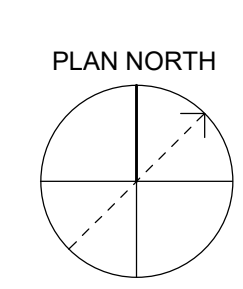
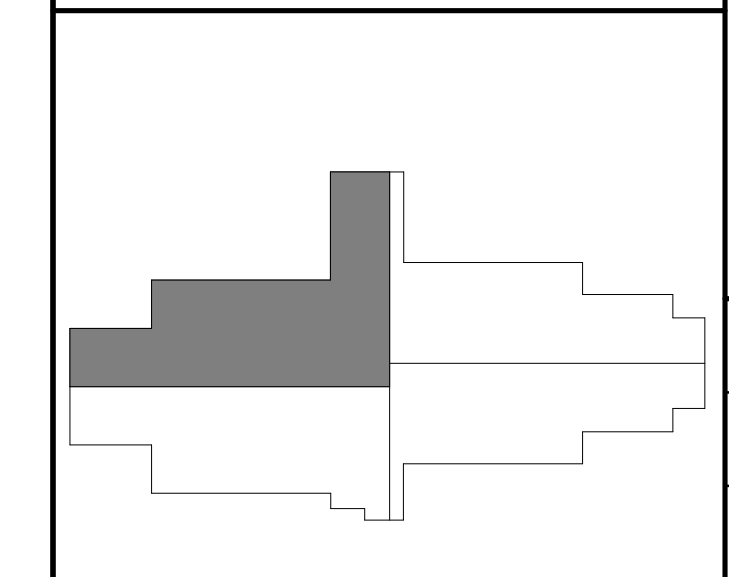


**SECOND LEVEL - AREA A - MECHANICAL PIPING PLAN**  
 KENTON COUNTY SCHOOL DISTRICT SUPPORT OPERATIONS CENTER  
 11800 TAYLOR MILL ROAD, INDEPENDENCE, KY 41051

DESIGNED:	STAFF
DRAWN:	STAFF
REVIEWED:	CVS
APPROVED:	CVS

REVISIONS	DATE	BY

**AREA KEY PLAN**

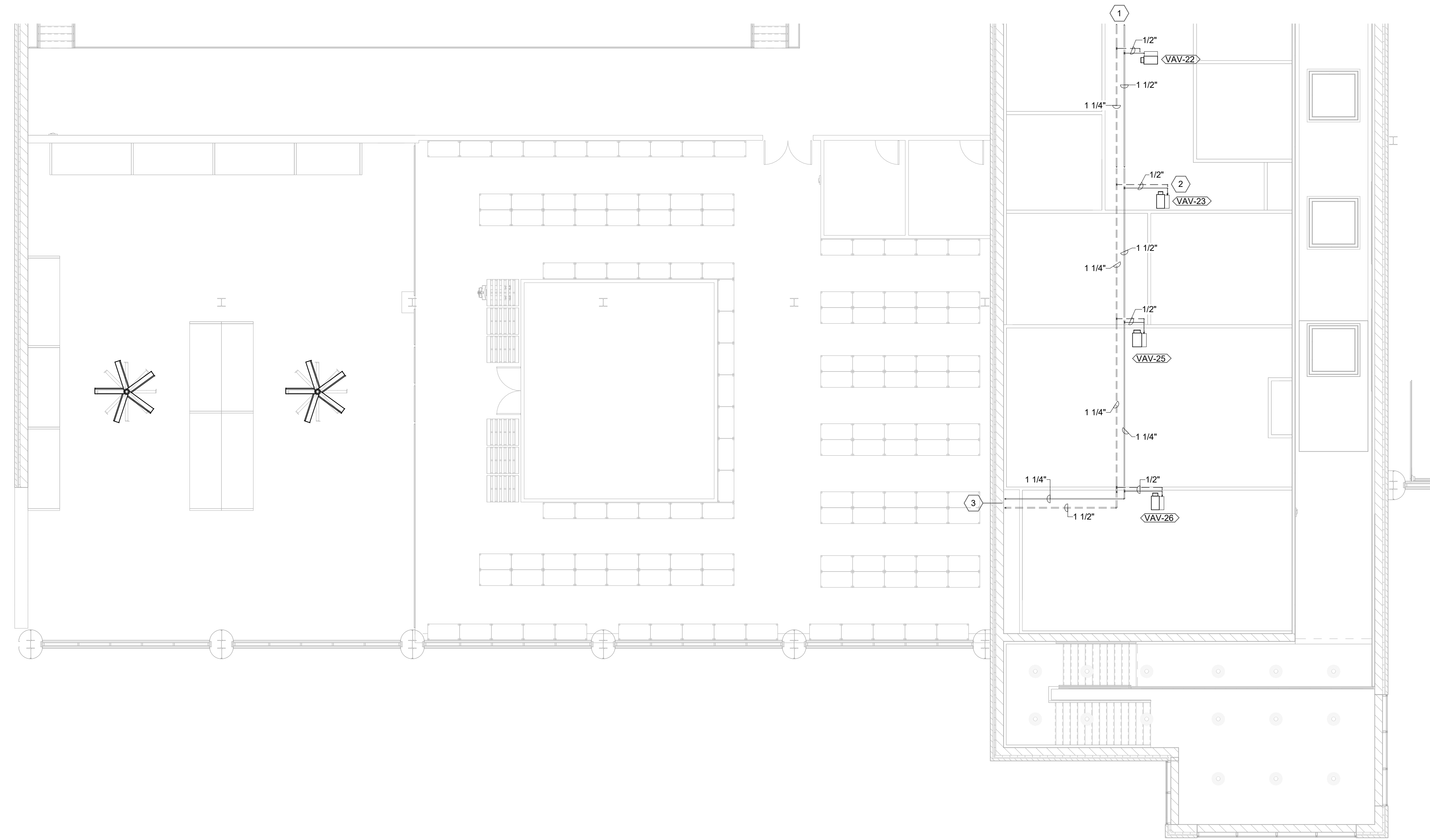


**1 SECOND LEVEL - AREA A - MECHANICAL PIPING PLAN**  
 SCALE: 1/8" = 1'-0"

DATE:	MARCH 30, 2023
SCALE:	1/8" = 1'-0"
SHEET NO.:	MP405

10/2023 8:12 AM C:\temp\hvac\Documents\2023\MP405\_Arch\MP405.dwg

CONSTRUCTION DOCUMENTS



**GENERAL NOTES:**

- SEE SHEET M001 FOR MECHANICAL LEGEND AND GENERAL NOTES.
- COORDINATE WITH OTHER DISCIPLINES PRIOR TO INSTALLATION OF MECHANICAL COMPONENTS.

GRW PROJECT NO. 05066-01  
 CLIENT PROJECT NO. BG 23-173  
 ALL RIGHTS RESERVED. THIS DOCUMENT IS THE PROPERTY OF GEOSPATIAL. IT IS TO BE REPRODUCED IN WHOLE OR IN PART WITHOUT THE WRITTEN PERMISSION OF GEOSPATIAL.

**SHEET KEYNOTES**

- SEE SHEET MP405 FOR CONTINUATION.
- CONNECT HOT WATER SUPPLY AND RETURN PIPING TO NEW VAV BOX. SEE DETAIL FOR CONNECTION INFORMATION. TYPICAL.
- HYDRONIC PIPING DOWN TO FIRST FLOOR. SEE SHEET MP402 FOR CONTINUATION.

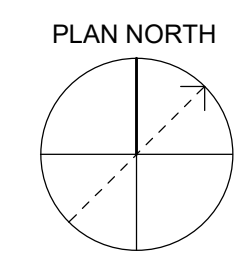
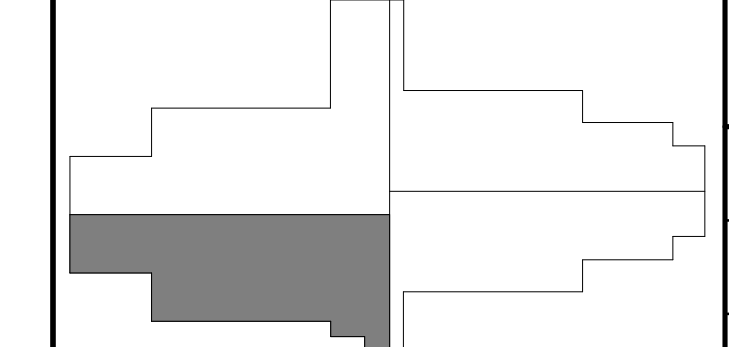
**GRW**  
 ENGINEERING - ARCHITECTURE - GEOSPATIAL  
 www.grwinc.com

**SECOND LEVEL - AREA B - MECHANICAL PIPING PLAN**  
 KENTON COUNTY SCHOOL DISTRICT SUPPORT OPERATIONS CENTER  
 11800 TAYLOR MILL ROAD, INDEPENDENCE, KY 41051

DESIGNED:	STAFF
DRAWN:	STAFF
REVIEWED:	CVS
APPROVED:	CVS

NO.	REVISIONS	DATE	BY

**AREA KEY PLAN**



DATE:	MARCH 30, 2023
SCALE:	1/8" = 1'-0"
SHEET NO.:	MP406

**1 SECOND LEVEL - AREA B - MECHANICAL PIPING PLAN**  
 SCALE: 1/8" = 1'-0"

3/30/2023 4:12:46 PM C:\temp\hvac\Drawings\MP406\MP406.dwg User: jgibson

CONSTRUCTION DOCUMENTS