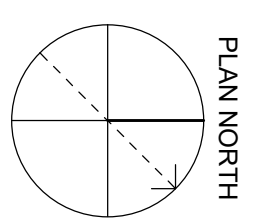
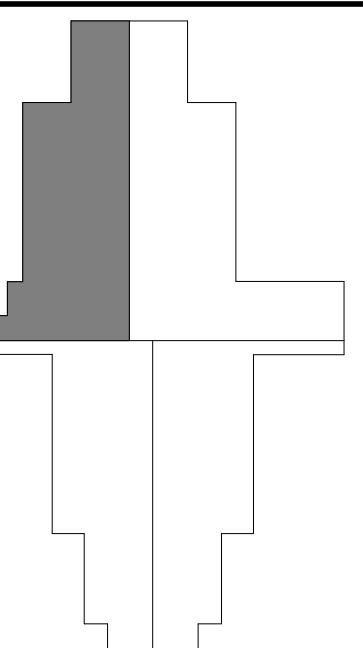


ON PAGE
MP401

1 FIRST LEVEL - AREA B - MECHANICAL PIPING PLAN
SCALE: 1/8" = 1'-0"



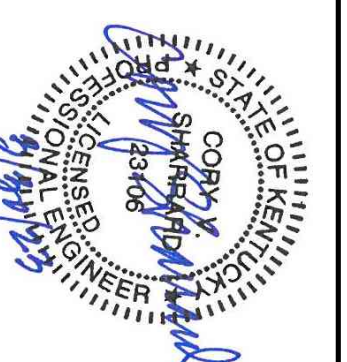
AREA KEY PLAN



GENERAL NOTES:
1. SEE SHEET MP401 FOR MECHANICAL EQUIPMENT SCHEDULES.
2. COORDINATE WITH OTHER DISCIPLINES FOR ANY INSTALLATION OF MECHANICAL EQUIPMENT.

SHEET KEYNOTES
1. SEE SHEET MP401 FOR CONTINUATION.
2. CONNECT HOT WATER SUPPLY AND RETURN PIPING TO NEW VAV BOX. SEE DETAIL FOR HYDRAULIC PIPING UP TO SECOND FLOOR.
3. SEE SHEET MP401 FOR CONTINUATION.

GRW PROJECT NO. 05056-01
CLIENT PROJECT NO. BG 23-173



ALL RIGHTS RESERVED.
THIS DOCUMENT IS THE PROPERTY OF GRW ENGINEERS, INC. AND SHALL NOT BE REPRODUCED IN WHOLE OR IN PART OR USED FOR CONSTRUCTION OF OTHER THAN THIS SPECIFIC PROJECT WITHOUT WRITTEN PERMISSION.



FIRST LEVEL - AREA B - MECHANICAL PIPING PLAN
KENTON COUNTY SCHOOL DISTRICT SUPPORT OPERATIONS CENTER
11800 TAYLOR MILL ROAD, INDEPENDENCE, KY 41051

DESIGNED: STAFF
DRAWN: STAFF
REVIEWED: CVS
APPROVED: CVS

REVISIONS			
NO.	REVISION/DESCRIPTION	DATE	BY

DATE: MARCH 30, 2023
SCALE: 1/8" = 1'-0"
SHEET NO. MP402

GENERAL NOTES:

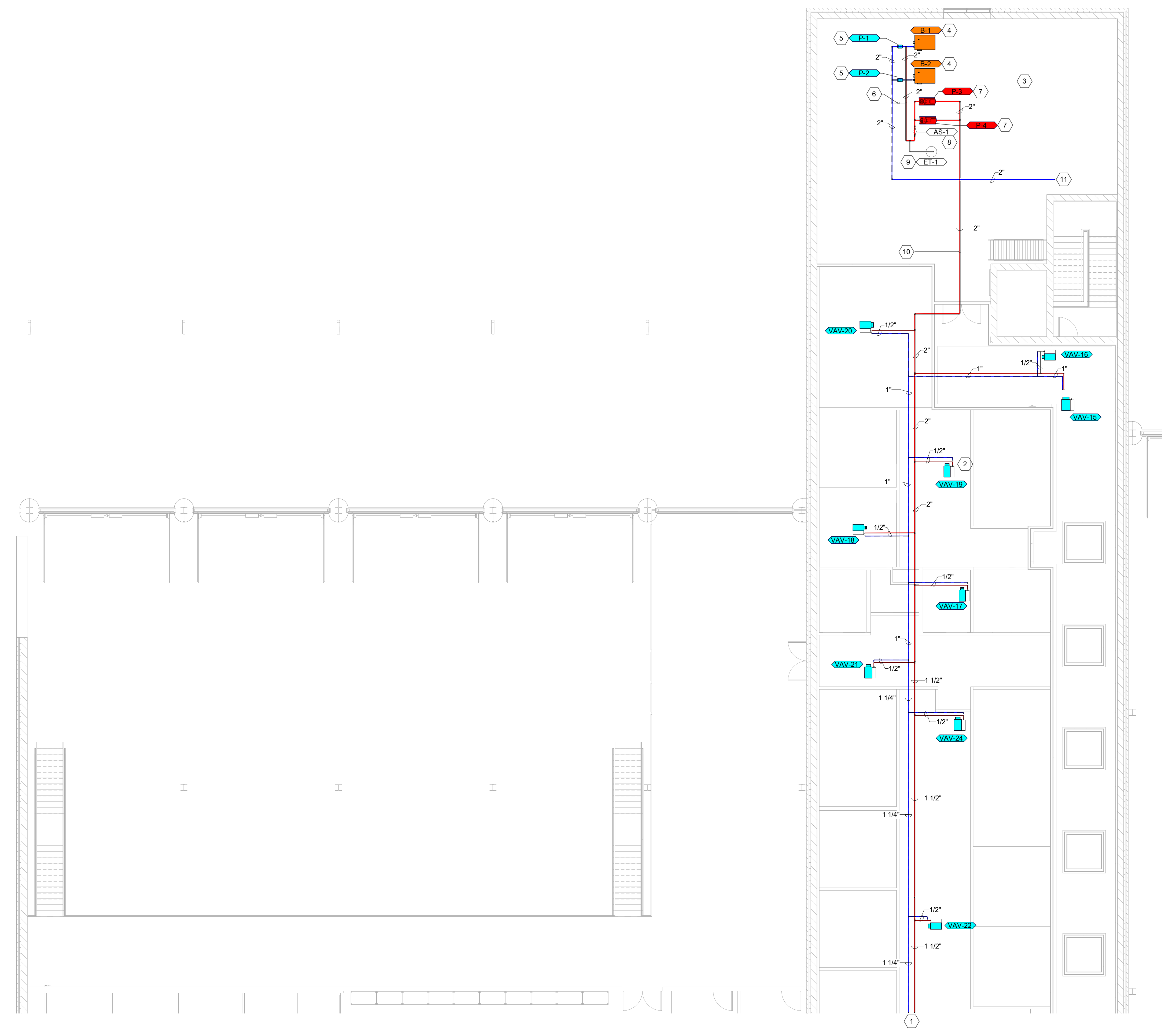
- SEE SHEET M001 FOR MECHANICAL LEGENDS AND GENERAL NOTES.
- COORDINATE WITH OTHER DISCIPLINES PRIOR TO INSTALLATION OF MECHANICAL COMPONENTS.

GRW PROJECT NO. 0908-01
 CLIENT PROJECT NO. BG 23-173
 ALL RIGHTS RESERVED.
 THIS DOCUMENT IS THE PROPERTY OF GEOSPATIAL. IT IS TO BE REPRODUCED IN WHOLE OR IN PART WITHOUT THE WRITTEN PERMISSION OF GEOSPATIAL.

SHEET KEYNOTES

- SEE SHEET MP406 FOR CONTINUATION.
- CONNECT HOT WATER SUPPLY AND RETURN PIPING TO NEW VAV BOX. SEE DETAIL FOR CONNECTION INFORMATION. TYPICAL.
- SEE SCHEMATIC MECHANICAL ROOM PIPING DIAGRAM DETAIL FOR MORE INFORMATION.
- FURNISH AND INSTALL NEW GAS-FIRED BOILER. INSTALL PER MANUFACTURER'S RECOMMENDATION. PROVIDE WITH 6" HOUSEKEEPING PAD. SEE DETAILS AND SCHEDULES FOR MORE INFORMATION.
- FURNISH AND INSTALL NEW INLINE BOILER CIRCULATING PUMP. INSTALL PER MANUFACTURER'S RECOMMENDATION. SEE DETAILS AND SCHEDULES FOR MORE INFORMATION.
- BYPASS PIPING WITH CHECK VALVE.
- FURNISH AND INSTALL NEW BASE MOUNTED ZONE PUMP. INSTALL PER MANUFACTURER'S RECOMMENDATION. PROVIDE WITH 6" HOUSEKEEPING PAD. SEE DETAILS AND SCHEDULES FOR MORE INFORMATION.
- FURNISH AND INSTALL NEW AIR SEPARATOR. INSTALL PER MANUFACTURER'S RECOMMENDATION. MOUNT AS HIGH AS POSSIBLE. SEE DETAILS AND SCHEDULES FOR MORE INFORMATION.
- FURNISH AND INSTALL NEW EXPANSION TANK. INSTALL PER MANUFACTURER'S RECOMMENDATION. PROVIDE WITH 6" HOUSEKEEPING PAD. SEE DETAILS AND SCHEDULES FOR MORE INFORMATION.
- PIPING TO MAKE-UP WATER STATION. SEE DETAIL FOR MORE INFORMATION.
- HYDRONIC PIPING DOWN TO FIRST FLOOR. SEE SHEET MP401 FOR CONTINUATION.

www.geospatial.com
 ENGINEERING - ARCHITECTURE - GEOSPATIAL



AREA KEY PLAN



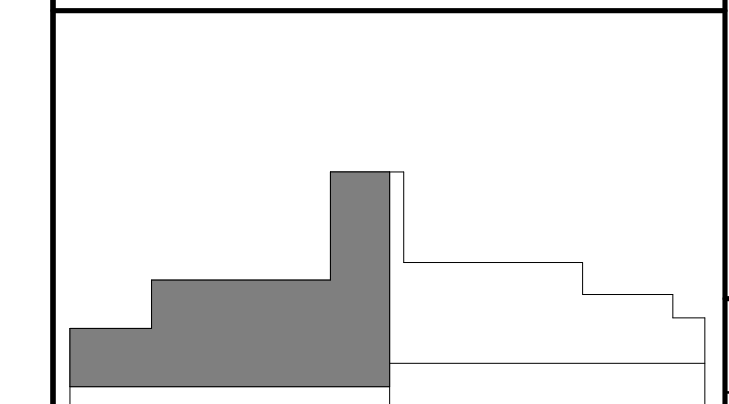
SECOND LEVEL - AREA A - MECHANICAL PIPING PLAN

KENTON COUNTY SCHOOL DISTRICT SUPPORT OPERATIONS CENTER
 11800 TAYLOR MILL ROAD, INDEPENDENCE, KY 41051

DESIGNED:	STAFF
DRAWN:	STAFF
REVIEWED:	CVS
APPROVED:	CVS

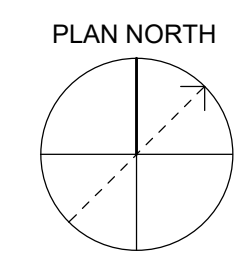
REVISIONS	DATE	BY

AREA KEY PLAN

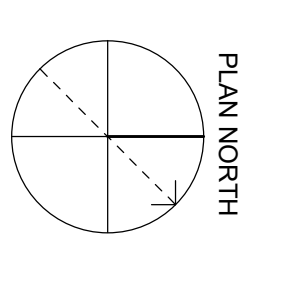
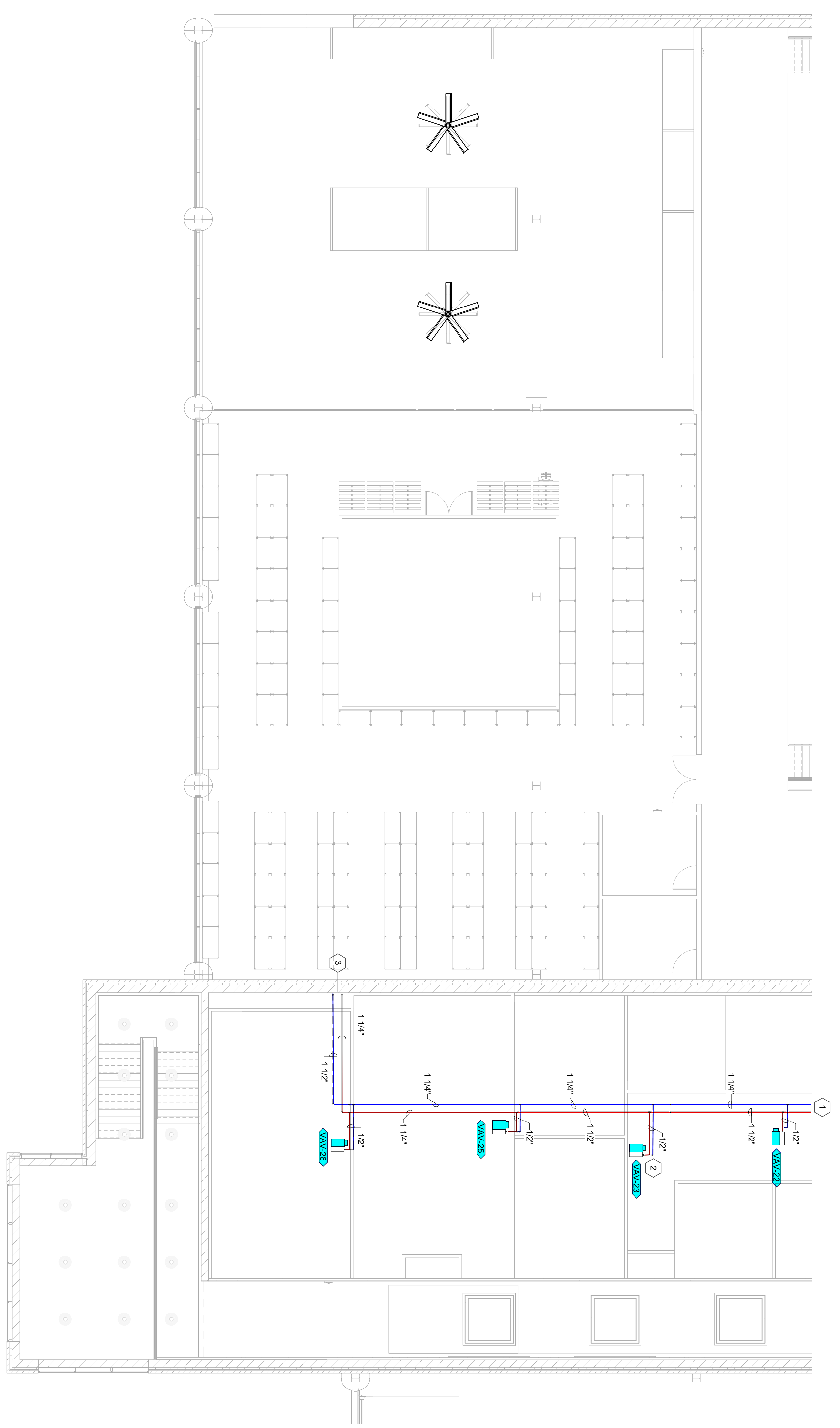


DATE: MARCH 30, 2023
 SCALE: 1/8" = 1'-0"
 SHEET NO. MP405

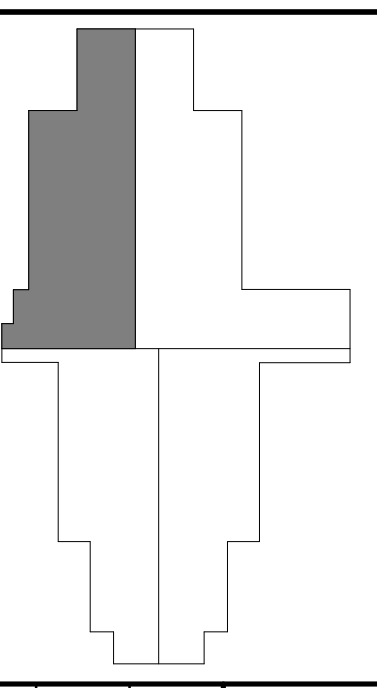
1 SECOND LEVEL - AREA A - MECHANICAL PIPING PLAN
 SCALE: 1/8" = 1'-0"



1 SECOND LEVEL - AREA B - MECHANICAL PIPING PLAN
SCALE: 1/8" = 1'-0"



AREA KEY PLAN



GENERAL NOTES:
1. SEE SHEET 05056-MECHANICAL FOR MECHANICAL EQUIPMENT SCHEDULES.
2. COORDINATE WITH OTHER DISCIPLINES FOR ANY INSTALLATION OF MECHANICAL EQUIPMENT.

SHEET KEYNOTES
1. SEE SHEET 05056-MECHANICAL FOR CONTINUATION.
2. CONNECT HOT WATER SUPPLY AND RETURN PIPING TO NEW VAV BOX. SEE DETAIL FOR HYDROLOGIC PIPING DOWN TO FIRST FLOOR. SEE SHEET 05056-MECHANICAL FOR CONTINUATION.

DESIGNED: STAFF		DRAWN: STAFF		REVIEWED: CVS		APPROVED: CVS	
NO.	REVISION/DESCRIPTION	DATE	BY	NO.	REVISION/DESCRIPTION	DATE	BY

DATE: MARCH 30, 2023
SCALE: 1/8" = 1'-0"
SHEET NO: MP406

SECOND LEVEL - AREA B - MECHANICAL PIPING PLAN
KENTON COUNTY SCHOOL DISTRICT SUPPORT OPERATIONS CENTER
11800 TAYLOR MILL ROAD, INDEPENDENCE, KY 41051

ENGINEERING - ARCHITECTURE - GEOSPATIAL
www.grwinc.com

GRW PROJECT NO. 05056-01
CLIENT PROJECT NO. BG 23-173

ALL RIGHTS RESERVED. THIS DOCUMENT IS THE PROPERTY OF GRW ENGINEERS, INC. AND SHALL NOT BE REPRODUCED IN WHOLE OR IN PART OR USED FOR CONSTRUCTION OF OTHER THAN THIS SPECIFIC PROJECT WITHOUT WRITTEN PERMISSION.

CONSTRUCTION DOCUMENTS