

**Report By:**

**National TAB  
1329 E. KEMPER ROAD  
SUITE 4210  
CINCINNATI, OH 45246**

**NATIONAL**

**TAB**

Comfort. Under control.

**Report: TAB REPORT  
Function: Test, Adjust, & Balance  
Date: 12/13/2022**

**PROJECT  
12-05 CULVERS - LAKE CITY, FL**

394 NW COMMONS LOOP

LAKE CITY , FL 32055

**Client**

Accurex

PO Box 410

Schofield, WI 54476

# National TAB

Project: 12-05 CULVERS - LAKE CITY, FL

## Table Of Contents

| <b>Section</b>       | <b>Page #</b> |
|----------------------|---------------|
| Summary              | 3             |
| Remarks              | 4             |
| Balance Schedule     | 8             |
| Site Pictures        | 9             |
| Checklist Data       | 14            |
| AHU/RTU              | 16            |
| FAN - Exhaust        | 21            |
| Kitchen Hood Type I  | 29            |
| Kitchen Hood Type II | 31            |
| GRD Layout           | 32            |

## Project Summary

The summary below provides a quick understanding of our scope of work and general testing procedures. Enclosed in the report is further detail about your building performance including recommendations, asset data, and pictures. Our focus is to work with the trades to remedy any issues or deficiencies during the actual field balancing and not after the balancing has occurred to achieve a positive environment and outcome. The level of success is determined by the availability of the trades, possible parts needed, or time constraints.

### RTU's (Roof Top Units)

Each of the RTU's were measured at their terminal devices or via traverse to establish a total flow for that unit. Each RTU was adjusted to within tolerance of the engineer's design flow. Each outlet was then adjusted to within tolerance of the design flow. Outside air was measured by reading the intake air opening with a velocity grid and multiplying by the free area. The outside air damper was adjusted until the airflow was within the design requirements. Any equipment that fell outside of that tolerance is noted throughout the report.

### Kitchen Exhaust Hood & Associated Fans

Each kitchen exhaust fan was measured at the hood filter bay utilizing a velocity matrix and a manufacturer's correction factor. Each filter velocity is multiplied by the manufacturer's corrected area. The sum of these readings equals the total flow of the exhaust fans. The total flow of the exhaust was then adjusted to within tolerance of the design flow.

### General Exhaust Fans

The general exhaust fans were measured by reading each air device with a flow hood. The total airflow for each fan is equivalent to the sum of these readings. Fan speed was then adjusted so that the airflow was within tolerance of design. Each terminal device was balanced to within tolerance of the design volume using the installed volume dampers. Any equipment that fell outside of this tolerance is noted throughout the report.

### Final Building Tests

After completing the test and balance the final building pressure was measured. It was confirmed that the building pressure fell within acceptable tolerances of  $-0.02''$  wc to  $+0.02''$  wc and that the pressure measurement coincides with the actual and design net airflow. Any deviations from these standards are noted throughout the report.

The hood capture was tested at the perimeter of the hood and the cook top level with the equipment heat on to ensure satisfactory hood capture and containment.



Comfort. Under control.

## 12-05 CULVERS - LAKE CITY, FL

### Project Issue Information

**Issue Name :** EF#2 is not getting power

**Description :** Potentiometer and switch are on for fan to run, however, fan is not turning on.

**Created By :** National TAB

**Assigned To :** National TAB - Will Turnbough

**Status :** Open

**Originated Date :** 12/07/2022 - Ian Fuller - National TAB

#### Project Issue File Details



EF2.jpeg



Comfort. Under control.

## 12-05 CULVERS - LAKE CITY, FL

### Project Issue Information

**Issue Name :** EF#3C is not completely wired.

**Description :** Bathroom lights are on and potentiometer is turned on, however, fan is not getting power due to wiring incomplete.

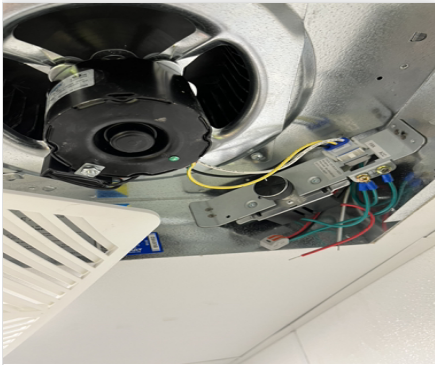
**Created By :** National TAB

**Assigned To :** National TAB - Will Turnbough

**Status :** Open

**Originated Date :** 12/07/2022 - Ian Fuller - National TAB

#### Project Issue File Details



EF3C.jpeg



Comfort. Under control.

## 12-05 CULVERS - LAKE CITY, FL

### Project Issue Information

**Issue Name :** PRV4 is not wired in yet.

**Description :** Conduit needs to be run to through raceway in fan and wired in to get power.

**Created By :** National TAB

**Assigned To :** National TAB - Will Turnbough

**Status :** Open

**Originated Date :** 12/07/2022 - Ian Fuller - National TAB



Comfort. Under control.

## 12-05 CULVERS - LAKE CITY, FL

### Project Issue Information

**Issue Name :** RTU30A CFM is above design.

**Description :** Currently running at 4062 cfm out of a designed 3250. Motor sheave turned to minimum setting, however cfm is still too high and motor is overramping. Recommended to replace fan sheave to a BK90 with 1.1875" bore. New fan sheave will require a BX57 or BX58 belt.

**Created By :** National TAB

**Assigned To :** National TAB - Will Turnbough

**Status :** Open

**Originated Date :** 12/08/2022 - Ian Fuller - National TAB

#### Project Issue Response Details

- **12/08/2022** National TAB - Ian Fuller



RTU.jpeg

### AIR BALANCE SCHEDULE

| UNIT          | AREA SERVED     | HVAC SUPPLY |        | HVAC RETURN |        | HVAC OUTDOOR |        | OA %   |        | HOOD MAKE-UP |        | HOOD EXHAUST |        | GENERAL EXH. |        |
|---------------|-----------------|-------------|--------|-------------|--------|--------------|--------|--------|--------|--------------|--------|--------------|--------|--------------|--------|
|               |                 | DESIGN      | ACTUAL | DESIGN      | ACTUAL | DESIGN       | ACTUAL | DESIGN | ACTUAL | DESIGN       | ACTUAL | DESIGN       | ACTUAL | DESIGN       | ACTUAL |
| RTU-1         | DINING          | 5200        | 5206   | 4300        | 4290   | 900          | 916    | 17.3%  | 17.6%  |              |        |              |        |              |        |
| RTU-2         | KITCHEN         | 5000        | 5130   | 4050        | 4151   | 950          | 979    | 19.0%  | 19.1%  |              |        |              |        |              |        |
| RTU-3OA       | OA RTU          | 3250        | 4062   | 1250        | 1441   | 2000         | 2621   | 61.5%  | 64.5%  |              |        |              |        |              |        |
| PRV-2         | HD1 GRIDDLE     |             |        |             |        |              |        |        |        |              |        | 1500         | 1507   |              |        |
| PRV-3         | HD2 FRYERS      |             |        |             |        |              |        |        |        |              |        | 1500         | 1480   |              |        |
| PRV-4         | HD3 DISH        |             |        |             |        |              |        |        |        |              |        | 350          | 362    |              |        |
| EF-1          | MENS RR         |             |        |             |        |              |        |        |        |              |        |              |        | 220          | 201    |
| EF-2          | MOP ROOM        |             |        |             |        |              |        |        |        |              |        |              |        | 50           | 53     |
| EF-3 (3)      | WOMENS/EMPL. RR |             |        |             |        |              |        |        |        |              |        |              |        | 210          | 208    |
| <b>TOTALS</b> |                 | 13450       | 14398  | 9600        | 9882   | 3850         | 4516   |        |        | 0            | 0      | 3350         | 3349   | 480          | 462    |

#### NET BUILDING AIRFLOW CALCULATION

| TOTALS             | DESIGN    | ACTUAL     |
|--------------------|-----------|------------|
| TOTAL OA           | 3850      | 4516       |
| TOTAL EXHAUST      | 3830      | 3811       |
| <b>NET AIRFLOW</b> | <b>20</b> | <b>705</b> |

| DOOR TESTED    | BUILDING PRESSURE MEASUREMENTS (IN. H2O) |
|----------------|--|
| FRONT          | 0.0024                                   |
| SIDE           | 0.0014                                   |
| REAR           | 0.0174                                   |
| <b>AVERAGE</b> | <b>0.0071</b>                            |

#### FINAL CHECKS

- ACTUAL NET AIRFLOW COINCIDES WITH DESIGN: ✔

---

- MEASURED PRESSURES COINCIDES WITH ACTUAL NET AIRFLOW: ✔

---

- PRESSURE FALLS WITHIN IMC TOLERANCE OF +/-0.02" W.C. ✔

#### NOTES:

RTU3-OA NEW SHEAVE HAS BEEN ORDERED TO BRING INTO DESIGN.



Comfort. Under control.

## 12-05 CULVERS - LAKE CITY, FL

### CheckList Information

**Name :** TECH - SITE PICTURES **Status :** Submitted  
**Assigned Organization :** National TAB **Asset :**  
**Requesting Organization :** National TAB

### CheckList Item Details

STORE FRONT



Storefront.jpeg

RTU-1



RTU1.jpeg

RTU-2



**RTU2.jpeg**

RTU-30A



**RTUOA.jpeg**

PRV-2



**PRV2.jpeg**

PRV-3



**PRV3.jpeg**

PRV-4



**PRV4.jpeg**

EF-1A



**EF1.jpeg**

HOOD 1



**Hood1.jpeg**

---

HOOD 2



**Hood2.jpeg**

---

HOOD 3



**Hood3.jpeg**

---

PRODIGY BOARD WIRING



**Wiring.jpeg**

**Notes/Comments :**



Comfort. Under control.

### 12-05 CULVERS - LAKE CITY, FL

#### CheckList Information

**Name :** TECH - STEP 1: INITIAL WALKTHROUGH **Status :** Submitted

**Assigned Organization :** National TAB **Asset :**

**Requesting Organization :** National TAB

#### CheckList Item Details

##### INITIAL SITE WALKTHROUGH

|  |     |
|--|-----|
| All diffusers and grilles are installed and match design?  | YES |
| Perforated diffusers are installed on the cook line? (4-ways will disrupt hood capture)            | YES |
| All hood filters installed and accounted for?  | YES |
| Hoods are wired and have power?  | YES |
| Thermostats have power?  | YES |
| Have trades/general contractor been notified about any issues and are they created on FaciliBuild? | YES |

#### Notes/Comments :



Comfort. Under control.

### 12-05 CULVERS - LAKE CITY, FL

#### CheckList Information

**Name :** TECH - STEP 2: UNIT DATA AND EVAL **Status :** Submitted

**Assigned Organization :** National TAB **Asset :**

**Requesting Organization :** National TAB

#### CheckList Item Details

##### UNIT DATA AND EVALUATION WHILE GATHERING UNIT DATA CHECK THE FOLLOWING:

##### RTU's/AHU's

|  |               |
|--|---------------|
| Economizers are assembled and functional?  | YES           |
| Thermostat wire run from OCP on the RTU to the Ec terminal at the thermostat? If no, jumper can be installed from R to OCP temporarily. (The economizers will not open without OCP being energized.) | YES           |
| Motors are all operating below the FLA rating?   | YES           |
| Are belts tight?   | YES           |
| If direct drive unit is the speed controller working.  | NA            |
| Is gas piping installed and valves turned on?  | NO GAS PIPING |
| Unit free of noticeable noise and vibration  | YES           |

##### EF's

|   |     |
|---|-----|
| Rotation is correct?  | YES |
| Belts are tight?  | NA  |
| Grease cup installed on hood fan?   | YES |
| Hinge kit installed installed on hood fan?  | YES |
| Lean grease rated fans back. Is grease duct installation adequate and is duct ran all the way to the base of the fan? | YES |

|  |               |
|--|---------------|
| Flex conduit is long enough so that fan can be completely tilted back?         | YES           |
| There is no major leakage around base of fan?                                  | NONE OBSERVED |
| Is the motor operating below the motor FLA rating?                             | YES           |
| For restroom fan(s) is the back draft damper installed and can it fully open?  | YES           |
| Unit free of noticeable noise and vibration?                                   | YES           |
| The hood exhaust fans are installed in correct positions and are not switched? | YES           |

**HOODS**

|  |     |
|--|-----|
| Kitchen equipment installed in proper places?                          | YES |
| Can kitchen equipment be turned on for final smoke test?               | YES |
| Second stage Grease Grabber filters are installed on the griddle hood? | YES |

**DOCUMENTATION**

|  |     |
|--|-----|
| Have trades/general contractor been notified about any issues and are they created on FaciliBuild? | YES |
|--|-----|

**Notes/Comments :**

---



---



---



Comfort. Under control.

### 12-05 CULVERS - LAKE CITY, FL

#### CheckList Information

**Name :** TECH - STEP 3: TEST, ADJUST AND BALANCE **Status :** Submitted

**Assigned Organization :** National TAB **Asset :**

**Requesting Organization :** National TAB

#### CheckList Item Details

**TEST, ADJUST, AND BALANCE ALL EQUIPMENT:**

**DURING TESTING MAKE NOTE OF THE FOLLOWING:**

|   |     |
|---|-----|
| Is space free of drafting?  | YES |
| Is space comfortable in all areas?  | YES |
| Is the space free of ventilation noise?   | YES |
| If deviations from design were necessary to resolve 1-3 what were they? Otherwise put "NA". | NA  |

**Notes/Comments :**



Comfort. Under control.

## 12-05 CULVERS - LAKE CITY, FL

### CheckList Information

|                                  |                            |                 |           |
|----------------------------------|----------------------------|-----------------|-----------|
| <b>Name :</b>                    | TECH - STEP 4: FINAL TESTS | <b>Status :</b> | Submitted |
| <b>Assigned Organization :</b>   | National TAB               | <b>Asset :</b>  |           |
| <b>Requesting Organization :</b> | National TAB               |                 |           |

### CheckList Item Details

#### FINAL TESTS

#### HOOD CAPTURE TEST

|   |                        |
|---|------------------------|
| List equipment turned on for testing        | GRILL/FRYER            |
| List smoke candle type used                 | 45 SECOND SMOKE CANDLE |
| Smoke test capture - Perimeter of hood      | 100                    |
| Smoke test capture - Top of cooking surface | 100                    |

#### WITNESS

|  |                              |
|--|------------------------------|
| Date test was completed                                  | 12/08/2022                   |
| TAB tech name / Firm                                     | IAN FULLER / NTAB            |
| Site super name / Firm                                   | NOAH / CAMPBELL CONSTRUCTION |
| Owner representative name / Firm (if Applicable)         | NA                           |
| Building pressure at front & back doors (All Systems On) | YES                          |

#### ADDITIONAL

|   |     |
|---|-----|
| Do actual net building airflow, design net building airflow, and pressure coincide? If not why? (All three should either be positive or negative) | YES |
| Thermostats are programmed?   | Yes |

#### PRODIGY SETTINGS FOR RTU'S

|                       |     |
|-----------------------|-----|
| Parameter 65 set to 0 | Yes |
|-----------------------|-----|

|   |     |
|---|-----|
| Parameter 78 set to 0                                   | YES |
| Parameter 105 set to 6                                  | YES |
| Parameter 156 set to 70 (Dining unit only)              | YES |
| Parameter 156 set to 65 (Kitchen Unit Only)             | YES |
| Parameter 170 set to 75 (Dining Unit Only)              | YES |
| Parameter 170 set to 70 (Kitchen Unit Only)             | YES |
| Parameter 131 set to the same % as OA minimum position? | YES |
| Parameter 117 set to the same % as OA minimum position? | YES |

**Notes/Comments :**

---

---

# National TAB

Project: 12-05 CULVERS - LAKE CITY, FL

System/Unit: AHU/RTU



Comfort. Under control.

Asset: RTU1

AREA:DINING

| Unit Data           |             |              |
|---------------------|-------------|--------------|
|                     | Design      | Actual       |
| MFG                 | LENNOX      | LENNOX       |
| Serial Num          | -           | 5622E01872   |
| Model Num           | LCH-156-H4B | LCH156H4BE5Y |
| Type                | RTU         | RTU          |
| Configuration       | VERTICAL    | VERTICAL     |
| Num OA Filters 1    | -           | 2            |
| OA Filter Size 1    | -           | 23X14        |
| Num Final Filter 1  | -           | 6            |
| Final Filter Size 1 | -           | 24X24X2      |

| Motor Data     |         |           |
|----------------|---------|-----------|
|                | Design  | Actual    |
| Motor MFG      | -       | US MOTORS |
| Frame          | -       | 56HZ      |
| Horsepower     | -       | 2         |
| Motor Rpm      | -       | 1755      |
| Phase          | 3       | 3         |
| Rated Voltage  | 208/230 | 200-230   |
| Rated Amperage | -       | 6.0-5.7   |

| Drive Data         |        |             |
|--------------------|--------|-------------|
|                    | Design | Actual      |
| Motor Sheave Size  | -      | 3.75"       |
| Motor Bore Size    | -      | 0.875"      |
| Motor Sheave SetPt | -      | 5 TURNS OUT |
| Fan Sheave Size    | -      | BK95        |
| Fan Sheave Bore    | -      | 1.1875"     |
| Belt CL Distance   | -      | 20.5"       |
| Num of Belts       | -      | 1           |
| Belt Size          | -      | BX59        |
| Belt Alignment     | -      | GOOD        |

| Test Data              |        |             |
|------------------------|--------|-------------|
|                        | Design | Actual      |
| SF CFM                 | 5200   | 5206        |
| SF RPM                 | -      | 577         |
| RA CFM                 | 4300   | 4290        |
| OA CFM                 | 900    | 916         |
| RL Voltage             | -      | 206/207/206 |
| RL Amperage            | -      | 4.3/4.3/4.1 |
| SF Rotation            | -      | CCW         |
| RA Damper Position     | -      | 55%         |
| Min OA Damper Position | -      | 45%         |
| Min OA Damper Type     | -      | ECONOMIZER  |
| OA Enthalpy Setpt      | -      | 5           |

| Performance Data |        |        |
|------------------|--------|--------|
|                  | Design | Actual |
| MA Plenum SP     | -      | -0.14" |
| Fan Suction SP   | -      | -0.35" |
| Fan Discharge SP | -      | 0.32"  |
| Total ESP        | -      | 0.46"  |
| Fan Total SP     | -      | 0.67"  |

| General                    |        |        |
|----------------------------|--------|--------|
|                            | Design | Actual |
| Fan Rotation Correct       | -      | YES    |
| Unit Filters Clean         | -      | YES    |
| Condensate Drain Installed | -      | YES    |

Completed By: Ian Fuller

Notes:

# National TAB

Project:12-05 CULVERS - LAKE CITY, FL

## AHU/RTU



Comfort. Under control.

### Diffuser Supply (GRD)

#### RTU1/DINING

| Asset      |                      |      |      |            |      |        |        |           |             |
|------------|----------------------|------|------|------------|------|--------|--------|-----------|-------------|
| Asset Name | Location             | Type | Size | DESIGN CFM | AK   | CFM(1) | CFM(2) | FINAL CFM | % to design |
| SGRD1      | ENTRY                | A4   | 6"   | 100        | 0.95 | 122    | 116    | 110       | 110.0       |
| SGRD2      | HALL                 | A4   | 10"  | 300        | 0.95 | 371    | 371    | 315       | 105.0       |
| SGRD3      | WOMENS RR            | C3   | 6"   | 75         | 0.95 | 146    | 86     | 74        | 98.7        |
| SGRD4      | MENS RR              | C3   | 6"   | 75         | 0.95 | 150    | 90     | 76        | 101.3       |
| SGRD5      | DINING               | A4   | 8"   | 200        | 0.95 | 185    | 216    | 196       | 98.0        |
| SGRD6      | DINING               | A4   | 10"  | 300        | 0.95 | 368    | 372    | 322       | 107.3       |
| SGRD7      | DINING               | A4   | 10"  | 250        | 0.95 | 287    | 282    | 238       | 95.2        |
| SGRD8      | DINING               | A4   | 10"  | 300        | 0.95 | 276    | 325    | 272       | 90.7        |
| SGRD9      | DINING               | A4   | 8"   | 200        | 0.95 | 238    | 235    | 200       | 100.0       |
| SGRD10     | DINING               | A4   | 8"   | 150        | 0.95 | 206    | 178    | 157       | 104.7       |
| SGRD11     | DINING               | A4   | 10"  | 275        | 0.95 | 370    | 345    | 287       | 104.4       |
| SGRD12     | DINING               | A4   | 10"  | 275        | 0.95 | 319    | 316    | 276       | 100.4       |
| SGRD13     | DINING               | A4   | 8"   | 150        | 0.95 | 241    | 178    | 158       | 105.3       |
| SGRD14     | DINING               | A3   | 8"   | 150        | 0.95 | 211    | 181    | 165       | 110.0       |
| SGRD15     | DINING               | A3   | 10"  | 300        | 0.95 | 306    | 346    | 318       | 106.0       |
| SGRD16     | DRINKS & CONDIMENT S | A3   | 10"  | 300        | 0.95 | 269    | 310    | 281       | 93.7        |
| SGRD17     | DINING               | A4   | 10"  | 250        | 0.95 | 348    | 261    | 245       | 98.0        |
| SGRD18     | DRINKS & CONDIMENT S | A4   | 8"   | 200        | 0.95 | 215    | 227    | 203       | 101.5       |
| SGRD19     | EXIT                 | A4   | 10"  | 250        | 0.95 | 278    | 301    | 252       | 100.8       |
| SGRD20     | ORDERING             | A4   | 10"  | 300        | 0.95 | 298    | 322    | 281       | 93.7        |
| SGRD21     | CUSTOMER SERVICE     | A4   | 8"   | 200        | 0.95 | 213    | 214    | 202       | 101.0       |
| SGRD22     | CUSTOMER SERVICE     | A4   | 8"   | 200        | 0.95 | 174    | 210    | 190       | 95.0        |
| SGRD23     | CUSTOMER SERVICE     | A4   | 8"   | 200        | 0.95 | 197    | 224    | 187       | 93.5        |
| SGRD24     | CUSTOMER SERVICE     | A4   | 8"   | 200        | 0.95 | 224    | 249    | 201       | 100.5       |

Completed By: Brianna Biggs on

# National TAB

Project: 12-05 CULVERS - LAKE CITY, FL  
System/Unit: AHU/RTU



Comfort. Under control.

Asset: RTU2

AREA: KITCHEN

| Unit Data           |             |              |
|---------------------|-------------|--------------|
|                     | Design      | Actual       |
| MFG                 | LENNOX      | LENNOX       |
| Serial Num          | -           | 5622C01943   |
| Model Num           | LCH-156-H4B | LCH156H4BE5Y |
| Type                | RTU         | RTU          |
| Configuration       | VERTICAL    | VERTICAL     |
| Num OA Filters 1    | -           | 2            |
| OA Filter Size 1    | -           | 23X14        |
| Num Final Filter 1  | -           | 6            |
| Final Filter Size 1 | -           | 24X24X2      |

| Motor Data     |         |           |
|----------------|---------|-----------|
|                | Design  | Actual    |
| Motor MFG      | -       | US MOTORS |
| Frame          | -       | 56HZ      |
| Horsepower     | -       | 2         |
| Motor Rpm      | -       | 1755      |
| Phase          | 3       | 3         |
| Rated Voltage  | 208/230 | 200-230   |
| Rated Amperage | -       | 6.0-5.7   |

| Drive Data         |        |             |
|--------------------|--------|-------------|
|                    | Design | Actual      |
| Motor Sheave Size  | -      | MVL40B      |
| Motor Bore Size    | -      | 0.875"      |
| Motor Sheave SetPt | -      | 3 TURNS OUT |
| Fan Sheave Size    | -      | 9.0"        |
| Fan Sheave Bore    | -      | 1.25"       |
| Belt CL Distance   | -      | 21.0"       |
| Num of Belts       | -      | 1           |
| Belt Size          | -      | BX59        |
| Belt Alignment     | -      | GOOD        |

| Test Data              |        |             |
|------------------------|--------|-------------|
|                        | Design | Actual      |
| SF CFM                 | 5000   | 5130        |
| SF RPM                 | -      | 656         |
| RA CFM                 | 4050   | 4151        |
| OA CFM                 | 950    | 979         |
| RL Voltage             | -      | 208/208/208 |
| RL Amperage            | -      | 5.2/5.3/5.4 |
| SF Rotation            | -      | CCW         |
| RA Damper Position     | -      | 35%         |
| Min OA Damper Position | -      | 65%         |
| Min OA Damper Type     | -      | ECONOMIZER  |
| OA Enthalpy Setpt      | -      | 5           |

| Performance Data |        |        |
|------------------|--------|--------|
|                  | Design | Actual |
| MA Plenum SP     | -      | -0.22" |
| Fan Suction SP   | -      | -0.47" |
| Fan Discharge SP | -      | 0.35"  |
| Total ESP        | -      | 0.57"  |
| Fan Total SP     | -      | 0.82"  |

| General                    |        |        |
|----------------------------|--------|--------|
|                            | Design | Actual |
| Fan Rotation Correct       | -      | YES    |
| Unit Filters Clean         | -      | YES    |
| Condensate Drain Installed | -      | YES    |

Completed By: Ian Fuller

Notes:

# National TAB

Project: 12-05 CULVERS - LAKE CITY, FL

## AHU/RTU



Comfort. Under control.

### Diffuser Supply (GRD)

#### RTU2/KITCHEN

| Asset      |              |      |      |            |      |        |        |           |             |
|------------|--------------|------|------|------------|------|--------|--------|-----------|-------------|
| Asset Name | Location     | Type | Size | DESIGN CFM | AK   | CFM(1) | CFM(2) | FINAL CFM | % to design |
| SGRD1      | COOKLINE     | E4   | 10"  | 300        | 0.95 | 397    | 299    | 299       | 99.7        |
| SGRD2      | COOKLINE     | E4   | 10"  | 350        | 0.95 | 387    | 347    | 347       | 99.1        |
| SGRD3      | COOKLINE     | E4   | 10"  | 300        | 0.95 | 278    | 306    | 306       | 102.0       |
| SGRD4      | FOOD PREP    | E4   | 10"  | 300        | 0.95 | 217    | 270    | 270       | 90.0        |
| SGRD5      | COOKLINE     | E4   | 10"  | 350        | 0.95 | 294    | 326    | 326       | 93.1        |
| SGRD6      | COOKLINE     | E4   | 10"  | 300        | 0.95 | 354    | 322    | 322       | 107.3       |
| SGRD7      | FOOD PREP    | A4   | 10"  | 300        | 0.95 | 337    | 324    | 324       | 108.0       |
| SGRD8      | DISHWASH H   | A4   | 10"  | 350        | 0.95 | 358    | 380    | 380       | 108.6       |
| SGRD9      | FOOD PREP    | A4   | 9"   | 300        | 0.95 | 374    | 329    | 329       | 109.7       |
| SGRD10     | DRIVE THRU   | A4   | 12"  | 500        | 0.95 | 522    | 548    | 548       | 109.6       |
| SGRD11     | SUNDAE PREP  | A4   | 9"   | 275        | 0.95 | 330    | 301    | 301       | 109.5       |
| SGRD12     | MOP ROOM     | E4   | 12"  | 550        | 0.95 | 467    | 502    | 502       | 91.3        |
| SGRD13     | OFFICE       | D1   | 9"   | 300        | 0.95 | 361    | 317    | 317       | 105.7       |
| SGRD14     | DRY GOOD     | A4   | 8"   | 200        | 0.95 | 238    | 209    | 209       | 104.5       |
| SGRD15     | DRY GOOD     | A4   | 8"   | 150        | 0.95 | 203    | 161    | 161       | 107.3       |
| SGRD16     | EMPLOYEE RR  | C1   | 4"   | 25         | 0.95 | 88     | 25     | 25        | 100.0       |
| SGRD17     | UTILITY ROOM | D1   | 7"   | 150        | 0.95 | 263    | 164    | 164       | 109.3       |

Completed By: Brianna Biggs on

# National TAB

Project: 12-05 CULVERS - LAKE CITY, FL  
System/Unit: AHU/RTU



Comfort. Under control.

Asset: RTU-OA3

AREA:OA TO RTU'S

| Unit Data           |             |              |
|---------------------|-------------|--------------|
|                     | Design      | Actual       |
| MFG                 | LENNOX      | LENNOX       |
| Serial Num          | -           | 5622E03277   |
| Model Num           | LCH-156-H4B | LCH156H4BJ5Y |
| Type                | RTU         | RTU          |
| Configuration       | VERTICAL    | VERTICAL     |
| Num OA Filters 1    | -           | 2            |
| OA Filter Size 1    | -           | 30.5X17      |
| Num Final Filter 1  | -           | 6            |
| Final Filter Size 1 | -           | 24X24X2      |

| Motor Data     |         |           |
|----------------|---------|-----------|
|                | Design  | Actual    |
| Motor MFG      | -       | US MOTORS |
| Frame          | -       | 56HZ      |
| Horsepower     | -       | 2         |
| Motor Rpm      | -       | 1755      |
| Phase          | 3       | 3         |
| Rated Voltage  | 208/230 | 200-230   |
| Rated Amperage | -       | 6.0-5.7   |

| Drive Data         |        |             |
|--------------------|--------|-------------|
|                    | Design | Actual      |
| Motor Sheave Size  | -      | 3.75"       |
| Motor Bore Size    | -      | 0.875"      |
| Motor Sheave SetPt | -      | 6 TURNS OUT |
| Fan Sheave Size    | -      | BK72        |
| Fan Sheave Bore    | -      | 1.1875      |
| Belt CL Distance   | -      | 20.5"       |
| Num of Belts       | -      | 1           |
| Belt Size          | -      | BX55        |
| Belt Alignment     | -      | GOOD        |

| Test Data              |        |             |
|------------------------|--------|-------------|
|                        | Design | Actual      |
| SF CFM                 | 3250   | 4062        |
| SF RPM                 | -      | 695         |
| RA CFM                 | 1250   |             |
| OA CFM                 | 2000   | 2621        |
| RL Voltage             | -      | 206/206/206 |
| RL Amperage            | -      | 8.2/8.3/8.4 |
| SF Rotation            | -      | CCW         |
| RA Damper Position     | -      | 90%         |
| Min OA Damper Position | -      | 100%        |
| Min OA Damper Type     | -      | ECONOMIZER  |
| OA Enthalpy Setpt      | -      | 5           |

| Performance Data |        |        |
|------------------|--------|--------|
|                  | Design | Actual |
|                  |        |        |

| General                    |        |        |
|----------------------------|--------|--------|
|                            | Design | Actual |
| Fan Rotation Correct       | -      | YES    |
| Unit Filters Clean         | -      | YES    |
| Condensate Drain Installed | -      | YES    |

Completed By: Brianna Biggs

Notes:

# National TAB

Project: 12-05 CULVERS - LAKE CITY, FL  
System/Unit: FAN - Exhaust



Comfort. Under control.

Asset: EF1

AREA:MENS RR

| Unit Data            |          |          |
|----------------------|----------|----------|
|                      | Design   | Actual   |
| <b>MFG</b>           | ACCUREX  | ACCUREX  |
| <b>Model Num</b>     | SPA-110  | XCR-A200 |
| <b>Serial Num</b>    | -        | 20766682 |
| <b>Type</b>          | CEILING  | CEILING  |
| <b>Configuration</b> | VERTICAL | VERTICAL |

| Motor Data              |        |           |
|-------------------------|--------|-----------|
|                         | Design | Actual    |
| <b>Motor MFG</b>        | -      | GREENHECK |
| <b>Frame</b>            | -      | N/L       |
| <b>Horsepower</b>       | -      | 1/40      |
| <b>Motor Rpm</b>        | -      | 625       |
| <b>Phase</b>            | 1      | 1         |
| <b>Voltage (rated)</b>  | 115    | 115       |
| <b>Amperage (rated)</b> | -      | 0.46      |
| <b>Service Factor</b>   | -      | N/L       |

| Test Data           |        |                 |
|---------------------|--------|-----------------|
|                     | Design | Actual          |
| <b>CFM</b>          | 220    | 201             |
| <b>Fan RPM</b>      | 700    | DD              |
| <b>Fan Rotation</b> | -      | CCW             |
| <b>Motor RPM</b>    | -      | DD              |
| <b>System SetPt</b> | -      | HIGHEST SETTING |
| <b>RL Voltage</b>   | -      | 115             |
| <b>RL Amperage</b>  | -      | 0.38            |
| <b>Total ESP</b>    | 0.10"  | NA              |

Completed By: Ian Fuller

Notes:

# National TAB

Project: 12-05 CULVERS - LAKE CITY, FL  
System/Unit: FAN - Exhaust



Comfort. Under control.

Asset: EF2

AREA:MOP ROOM

| Unit Data     |          |          |
|---------------|----------|----------|
|               | Design   | Actual   |
| MFG           | ACCUREX  | ACCUREX  |
| Model Num     | SPA-110  | XCR-B50  |
| Serial Num    | -        | 20766690 |
| Type          | CEILING  | CEILING  |
| Configuration | VERTICAL | VERTICLE |

| Motor Data       |        |           |
|------------------|--------|-----------|
|                  | Design | Actual    |
| Motor MFG        | -      | GREENHECK |
| Frame            | -      | N/L       |
| Horsepower       | -      | N/L       |
| Motor Rpm        | -      | 625       |
| Phase            | 1      | 1         |
| Voltage (rated)  | 115    | 115       |
| Amperage (rated) | -      | 0.13      |
| Service Factor   | -      | N/L       |

| Test Data        |        |        |
|------------------|--------|--------|
|                  | Design | Actual |
| CFM              | 50     | 53     |
| Fan RPM          | 700    | DD     |
| Fan Rotation     | -      | CCW    |
| Motor RPM        | -      | DD     |
| System SetPt     | -      | MAX    |
| RL Voltage       | -      | 115    |
| RL Amperage      | -      | 0.13   |
| Total ESP        | 0.10"  | NA     |
| Fan Discharge SP | -      | NA     |

Completed By: Ian Fuller

Notes:

# National TAB

Project: 12-05 CULVERS - LAKE CITY, FL  
System/Unit: FAN - Exhaust



Comfort. Under control.

Asset: EF-A3

AREA:WOMEN RR

| Unit Data            |          |          |
|----------------------|----------|----------|
|                      | Design   | Actual   |
| <b>MFG</b>           | ACCUREX  | ACCUREX  |
| <b>Model Num</b>     | XCR-B70  | XCR-B70  |
| <b>Serial Num</b>    | -        | 20766695 |
| <b>Type</b>          | CEILING  | CEILING  |
| <b>Configuration</b> | VERTICAL | VERTICLE |

| Motor Data              |        |           |
|-------------------------|--------|-----------|
|                         | Design | Actual    |
| <b>Motor MFG</b>        | -      | GREENHECK |
| <b>Frame</b>            | -      | N/L       |
| <b>Horsepower</b>       | -      | N/L       |
| <b>Motor Rpm</b>        | -      | 675       |
| <b>Phase</b>            | 1      | 1         |
| <b>Voltage (rated)</b>  | 115    | 115       |
| <b>Amperage (rated)</b> | -      | 0.15      |
| <b>Service Factor</b>   | -      | N/L       |

| Test Data               |        |        |
|-------------------------|--------|--------|
|                         | Design | Actual |
| <b>CFM</b>              | 70     | 69     |
| <b>Fan RPM</b>          | -      | DD     |
| <b>Fan Rotation</b>     | -      | CCW    |
| <b>Motor RPM</b>        | -      | DD     |
| <b>System SetPt</b>     | -      | MAX    |
| <b>RL Voltage</b>       | -      | 116    |
| <b>RL Amperage</b>      | -      | 0.13   |
| <b>Total ESP</b>        | 0.100" | NA     |
| <b>Fan Inlet SP</b>     | -      | NA     |
| <b>Fan Discharge SP</b> | -      | NA     |

Completed By: Ian Fuller

Notes:

# National TAB

Project: 12-05 CULVERS - LAKE CITY, FL  
System/Unit: FAN - Exhaust



Comfort. Under control.

Asset: EF-B3

AREA:WOMENS RR

| Unit Data     |          |          |
|---------------|----------|----------|
|               | Design   | Actual   |
| MFG           | ACCUREX  | ACCUREX  |
| Model Num     | XCR-B70  | XCR-B70  |
| Serial Num    | -        | 20766696 |
| Type          | CEILING  | CEILING  |
| Configuration | VERTICAL | VERTICAL |

| Motor Data       |        |           |
|------------------|--------|-----------|
|                  | Design | Actual    |
| Motor MFG        | -      | GREENHECK |
| Frame            | -      | N/L       |
| Horsepower       | -      | N/L       |
| Motor Rpm        | -      | 675       |
| Phase            | 1      | 1         |
| Voltage (rated)  | 115    | 115       |
| Amperage (rated) | -      | 0.15      |
| Service Factor   | -      | N/L       |

| Test Data        |        |        |
|------------------|--------|--------|
|                  | Design | Actual |
| CFM              | 70     | 69     |
| Fan RPM          | -      | DD     |
| Fan Rotation     | -      | CCW    |
| Motor RPM        | -      | DD     |
| System SetPt     | -      | MAX    |
| RL Voltage       | -      | 115    |
| RL Amperage      | -      | 0.13   |
| Total ESP        | 0.100" | NA     |
| Fan Inlet SP     | -      | NA     |
| Fan Discharge SP | -      | NA     |

Completed By: Ian Fuller

Notes:

# National TAB

Project: 12-05 CULVERS - LAKE CITY, FL  
System/Unit: FAN - Exhaust



Comfort. Under control.

Asset: EF-C3

AREA:EMPLOYEE RR

| Unit Data     |          |          |
|---------------|----------|----------|
|               | Design   | Actual   |
| MFG           | ACCUREX  | ACCUREX  |
| Model Num     | XCR-B70  | XCR-B70  |
| Serial Num    | -        | 20766694 |
| Type          | CEILING  | CEILING  |
| Configuration | VERTICAL | VERTICAL |

| Motor Data       |        |           |
|------------------|--------|-----------|
|                  | Design | Actual    |
| Motor MFG        | -      | GREENHECK |
| Frame            | -      | N/L       |
| Horsepower       | -      | N/L       |
| Motor Rpm        | -      | 675       |
| Phase            | 1      | 1         |
| Voltage (rated)  | 115    | 115       |
| Amperage (rated) | -      | 0.15      |
| Service Factor   | -      | N/L       |

| Test Data        |        |                 |
|------------------|--------|-----------------|
|                  | Design | Actual          |
| CFM              | 70     | 70              |
| Fan RPM          | -      | DD              |
| Fan Rotation     | -      | CCW             |
| Motor RPM        | -      | DD              |
| System SetPt     | -      | HIGHEST SETTING |
| RL Voltage       | -      | 115             |
| RL Amperage      | -      | 0.13            |
| Total ESP        | 0.100" | NA              |
| Fan Inlet SP     | -      | NA              |
| Fan Discharge SP | -      | NA              |

Completed By: Ian Fuller

Notes:

# National TAB

Project: 12-05 CULVERS - LAKE CITY, FL  
System/Unit: FAN - Exhaust



Comfort. Under control.

Asset: PRV-2

AREA:HOOD 1 GRIDDLE

| Unit Data            |               |                       |
|----------------------|---------------|-----------------------|
|                      | Design        | Actual                |
| <b>MFG</b>           | ACCUREX       | ACCUREX               |
| <b>Model Num</b>     | XRUB-161XP-15 | XCUE-140-10-V6-1-26-6 |
| <b>Serial Num</b>    | -             | 20769541              |
| <b>Type</b>          | UPBLAST       | UPBLAST               |
| <b>Configuration</b> | VERTICAL      | VERTICAL              |

| Test Data            |        |        |
|----------------------|--------|--------|
|                      | Design | Actual |
| <b>CFM</b>           | 1500   | 1480   |
| <b>Fan RPM</b>       | 2411   | DD     |
| <b>Fan Rotation</b>  | -      | CCW    |
| <b>Motor RPM</b>     | -      | DD     |
| <b>RL Voltage</b>    | -      | 211    |
| <b>RL Amperage</b>   | -      | 6.4    |
| <b>Suction ESP</b>   | -      | -1.20" |
| <b>Discharge ESP</b> | -      | ATM    |
| <b>Total ESP</b>     | 2.337" | 1.20"  |

| Motor Data              |        |                 |
|-------------------------|--------|-----------------|
|                         | Design | Actual          |
| <b>Motor MFG</b>        | -      | VERI-GREEN      |
| <b>Frame</b>            | -      | N/L             |
| <b>Horsepower</b>       | 1.5    | 1               |
| <b>Motor Rpm</b>        | 1725   | 300-1750        |
| <b>Phase</b>            | 3      | 1               |
| <b>Voltage (rated)</b>  | 208    | 115/208-230/277 |
| <b>Amperage (rated)</b> | -      | 11.5/7.0/5.8    |
| <b>Service Factor</b>   | -      | N/L             |

| Drive Data                |        |        |
|---------------------------|--------|--------|
|                           | Design | Actual |
| <b>Motor Sheave Size</b>  | -      | DD     |
| <b>Motor Bore Size</b>    | -      | DD     |
| <b>Motor Sheave SetPt</b> | -      | DD     |
| <b>Fan Sheave Size</b>    | -      | DD     |
| <b>Fan Sheave Bore</b>    | -      | DD     |
| <b>Belt CL Distance</b>   | -      | DD     |
| <b>Num of Belts</b>       | -      | DD     |
| <b>Belt Size</b>          | -      | DD     |

Completed By: Ian Fuller

Notes:

# National TAB

Project: 12-05 CULVERS - LAKE CITY, FL  
System/Unit: FAN - Exhaust



Comfort. Under control.

Asset: PRV-3

AREA:HOOD 2 FRYER

| Unit Data     |            |                       |
|---------------|------------|-----------------------|
|               | Design     | Actual                |
| MFG           | ACCUREX    | ACCUREX               |
| Model Num     | XRUB-141-7 | XCUE-140-10-V6-1-26-6 |
| Serial Num    | -          | 20769542              |
| Type          | UPBLAST    | UPBLAST               |
| Configuration | VERTICAL   | VERTICAL              |

| Motor Data       |        |                 |
|------------------|--------|-----------------|
|                  | Design | Actual          |
| Motor MFG        | -      | VERI-GREEN      |
| Frame            | -      | N/L             |
| Horsepower       | 0.75   | 1               |
| Motor Rpm        | 1725   | 300-1750        |
| Phase            | 3      | 1               |
| Voltage (rated)  | 208    | 115/208-230/277 |
| Amperage (rated) | -      | 11.5/7.0/5.8    |
| Service Factor   | -      | N/L             |

| Drive Data         |        |        |
|--------------------|--------|--------|
|                    | Design | Actual |
| Motor Sheave Size  | -      | DD     |
| Motor Bore Size    | -      | DD     |
| Motor Sheave SetPt | -      | DD     |
| Fan Sheave Size    | -      | DD     |
| Fan Sheave Bore    | -      | DD     |
| Belt CL Distance   | -      | DD     |
| Num of Belts       | -      | DD     |
| Belt Size          | -      | DD     |

| Test Data     |        |        |
|---------------|--------|--------|
|               | Design | Actual |
| CFM           | 1500   | 1507   |
| Fan RPM       | 1377   | DD     |
| Fan Rotation  | -      | CCW    |
| Motor RPM     | -      | DD     |
| RL Voltage    | -      | 211    |
| RL Amperage   | -      | 4.4    |
| Suction ESP   | -      | -0.71" |
| Discharge ESP | -      | ATM    |
| Total ESP     | 1.0"   | 0.71"  |

Completed By: Ian Fuller

Notes:

# National TAB

Project: 12-05 CULVERS - LAKE CITY, FL  
System/Unit: FAN - Exhaust



Comfort. Under control.

Asset: PRV-4

AREA:HD3 DISH

| Unit Data     |            |                     |
|---------------|------------|---------------------|
|               | Design     | Actual              |
| MFG           | ACCUREX    | ACCUREX             |
| Model Num     | XRED-090-D | XRED-095-D-8-1-17-X |
| Serial Num    | -          | 20768034            |
| Type          | DOWNBLAST  | DOWNBLAST           |
| Configuration | HORIZONTAL | HORIZONTAL          |

| Motor Data       |         |                           |
|------------------|---------|---------------------------|
|                  | Design  | Actual                    |
| Motor MFG        | -       | MCMILLAN ELECTRIC COMPANY |
| Frame            | -       | NL                        |
| Horsepower       | 0.0667" | 0.125                     |
| Motor Rpm        | 1550    | 1550/1300/1050            |
| Phase            | 1       | 1                         |
| Voltage (rated)  | 115     | 115                       |
| Amperage (rated) | -       | 2.6                       |
| Service Factor   | -       | N/L                       |

| Test Data        |        |                |
|------------------|--------|----------------|
|                  | Design | Actual         |
| CFM              | 350    | 362            |
| Fan RPM          | 1532   | DD             |
| Fan Rotation     | -      | CCW            |
| Motor RPM        | -      | 1050           |
| System SetPt     | -      | LOWEST SETTING |
| RL Voltage       | -      | 115            |
| RL Amperage      | -      | 1.2            |
| Total ESP        | 0.6"   | 0.26"          |
| Fan Inlet SP     | -      | -0.26"         |
| Fan Discharge SP | -      | ATM            |

Completed By: Ian Fuller

Notes:

# National TAB

Project: 12-05 CULVERS - LAKE CITY, FL

## System/Unit: Kitchen Hood Type I



Comfort. Under control.

Asset: HD1

AREA:

| Unit Data               |                      |                      |
|-------------------------|----------------------|----------------------|
|                         | Design               | Actual               |
| <b>MFG</b>              | ACCUREX              | ACCUREX              |
| <b>Model Num</b>        | XXEP-6.92-S          | XXEP-83.00-S         |
| <b>Job / Serial Num</b> | -                    | 20807642             |
| <b>Type</b>             | TYPE I LOW PROXIMITY | TYPE 1 LOW PROXIMITY |
| <b>Hood length</b>      | 83"                  | 83"                  |
| <b>Hood Width</b>       | 23"                  | 23"                  |

| Test Data Exhaust              |           |           |
|--------------------------------|-----------|-----------|
|                                | Design    | Actual    |
| <b>Filter Type</b>             | X-TRACTOR | X-TRACTOR |
| <b>Filter Size 1</b>           | 16X16     | 16X16     |
| <b>Filter Qty 1</b>            | 5         | 5         |
| <b>Filter AK factor size 1</b> | 1.53      | 1.53      |
| <b>Filter Total AK Area</b>    | 7.65      | 7.65      |
| <b>Filter1 FPM</b>             | -         | -206.9    |
| <b>Filter2 FPM</b>             | -         | -191.3    |
| <b>Filter3 FPM</b>             | -         | -226.1    |
| <b>Filter4 FPM</b>             | -         | -209.4    |
| <b>Filter5 FPM</b>             | -         | -252.7    |
| <b>Filter Ave FPM(corr)</b>    | -         | 197       |
| <b>CFM</b>                     | 1500      | 1507      |

| Cooking Equipment |        |        |
|-------------------|--------|--------|
|                   | Design | Actual |
| <b>Item 1</b>     | -      | FRYER  |

Completed By: Ian Fuller

Notes:

# National TAB

Project: 12-05 CULVERS - LAKE CITY, FL

## System/Unit: Kitchen Hood Type I



Comfort. Under control.

Asset: HD2

AREA:

### Unit Data

|                  | Design               | Actual               |
|------------------|----------------------|----------------------|
| MFG              | ACCUREX              | ACCUREX              |
| Model Num        | ZGEP-5.33-S          | XGEP-64.00-S         |
| Job / Serial Num | -                    | 2-8-7643             |
| Type             | TYPE I LOW PROXIMITY | TYPE 1 LOW PROXIMITY |
| Hood length      | 64"                  | 64"                  |
| Hood Width       | 23"                  | 23"                  |

### Test Data Exhaust

|                         | Design         | Actual         |
|-------------------------|----------------|----------------|
| Filter Type             | GREASE GRABBER | GREASE GRABBER |
| Filter Size 1           | 16X16          | 16X16          |
| Filter Qty 1            | 4              | 4              |
| Filter AK factor size 1 | 1.53           | 1.53           |
| Filter Total AK Area    | 6.12           | 6.12           |
| Filter1 FPM             | -              | -273.1         |
| Filter2 FPM             | -              | -275.3         |
| Filter3 FPM             | -              | -251.7         |
| Filter4 FPM             | -              | -263.1         |
| Filter Ave FPM(corr)    | -              | 242            |
| CFM                     | 1500           | 1480           |

### Cooking Equipment

|        | Design | Actual  |
|--------|--------|---------|
| Item 1 | -      | GRIDDLE |

Completed By: Ian Fuller

Notes:

# National TAB

Project: 12-05 CULVERS - LAKE CITY, FL

System/Unit: Kitchen Hood Type II



Comfort. Under control.

Asset: HD3

AREA:

| Unit Data   |                |                |
|-------------|----------------|----------------|
|             | Design         | Actual         |
| MFG         | ACCUREX        | ACCUREX        |
| Model Num   | XD3-3.5-S      | XD3-42.00-S    |
| Serial Num  | -              | 20807638       |
| Type        | TYPE II CANOPY | TYPE II CANOPY |
| Hood length | 42"            | 42"            |
| Hood Width  | 42"            | 42"            |

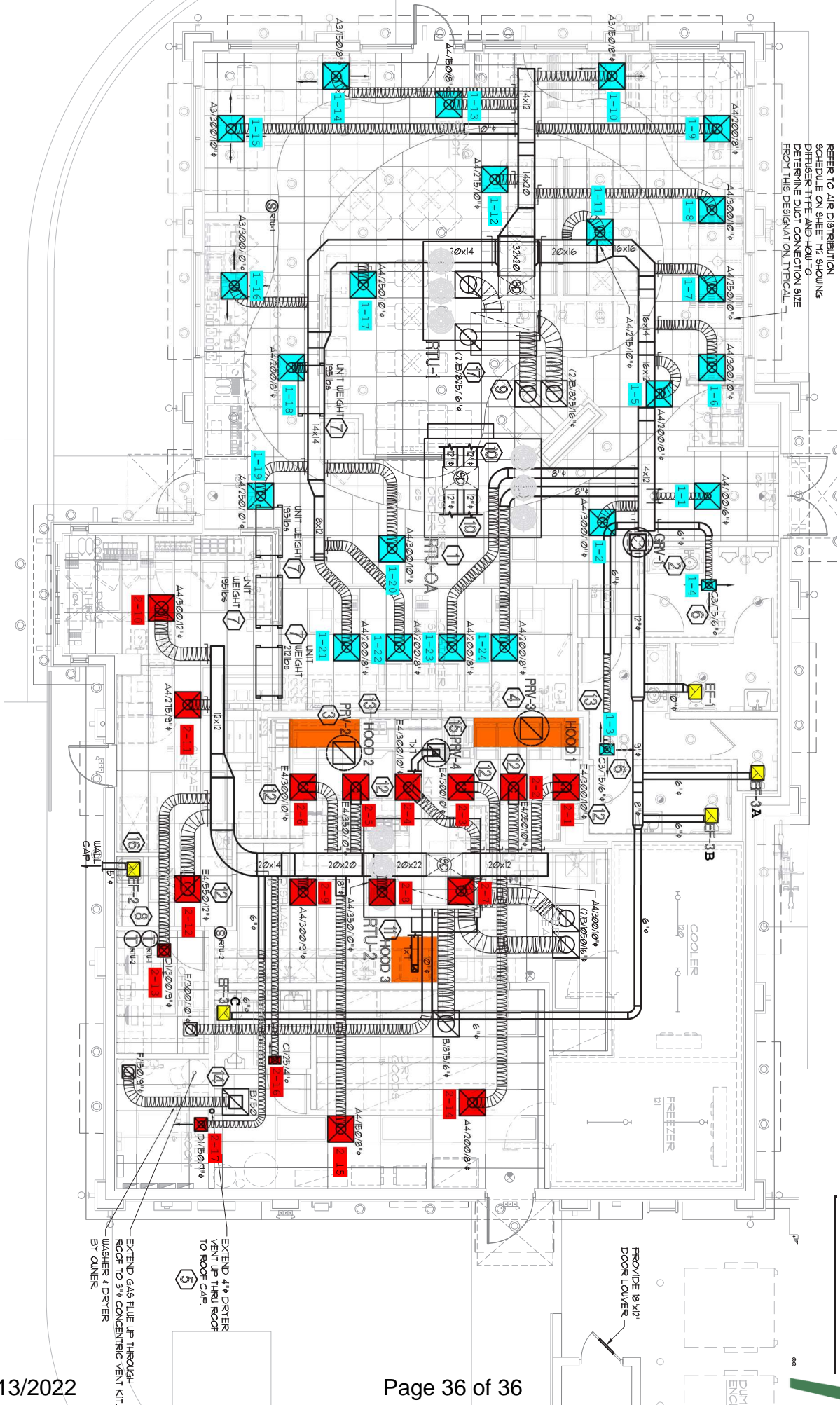
| Test Data         |        |        |
|-------------------|--------|--------|
|                   | Design | Actual |
| Exhaust VEL(corr) | -      | 1065   |
| Exhaust CFM       | 350    | 362    |

| Cooking Equipment |        |            |
|-------------------|--------|------------|
|                   | Design | Actual     |
| Item 1            | -      | DISHWASHER |

Completed By: Ian Fuller

Notes:

REFER TO AIR DISTRIBUTION  
 SCHEDULE ON SHEET M2 SHOWING  
 DIFFUSER TYPE AND HOW TO  
 DETERMINE DUCT CONNECTION SIZE  
 FROM THIS DESIGNATION TYPICAL.



EXTEND GAS FLUE UP THROUGH  
 ROOF TO 3" CONCENTRIC VENT KIT.  
 W/ W/ASHER & DRYER  
 BY OWNER

EXTEND 4" DRYER  
 VENT UP THRU ROOF  
 TO ROOF CAP

5

PROVIDE 18"x21"  
 DOOR LOWER