

* REFERENCE 'G' SERIES FOR GENERAL NOTES AND ADDITIONAL INFORMATION.

GENERAL NOTES:

1. INFORMATION SHOWN ON THE DRAWINGS IS INTENDED TO CONVEY SCOPE AND IS ARRANGED FOR DRAWING CLARITY. IT IS NOT TO BE TAKEN AS AN AS-BUILT CONDITION. THE SYSTEM INSTALLATION SHALL BE COORDINATED WITH STRUCTURE, CEILINGS, WALLS, AND ALL OTHER TRADES TO PROVIDE FOR A COMPLETE AND WORKING SYSTEM.
2. COORDINATE ALL DUCT PENETRATIONS WITH STRUCTURAL PRIOR TO CUTTING FLOORS OR BEARING WALLS.
3. PROVIDE ACOUSTICAL SEALANT AT PENETRATIONS OF ALL STC-RATED WALLS. REFER TO ARCHITECTURAL PLANS FOR LOCATIONS OF STC-RATED WALLS.
4. PROVIDE FIRESTOPPING AT PENETRATIONS OF ALL RATED WALLS. REFER TO CODE PLANS FOR LOCATIONS OF RATED WALLS.
5. WALL MOUNTED DEVICES SUCH AS THERMOSTATS, TEMPERATURE SENSORS, HUMIDITY SENSORS, AND PRESSURE SENSORS ARE SHOWN ON PLANS FOR CLARITY AND GENERAL REFERENCE OF LOCATIONS. LOCATIONS SHOW ARE NOT TO BE CONSIDERED THE EXACT MOUNTING LOCATION. COORDINATE THE INSTALLATION OF ALL WALL MOUNTED DEVICES WITH THE ARCHITECTURAL ELEVATIONS AND OTHER TRADES WALL MOUNTED DEVICES. GROUP THE INSTALLATION OF ALL THE DEVICES TO THE EXTENT POSSIBLE AND LOCATED DEVICES SUCH THAT THEY DO NOT CONFLICT WITH MILL WORK, TELEVISIONS, FURNITURE, TEACHING BOARDS, AND OTHER SIMILAR OBSTRUCTIONS.
6. ALL DUCTWORK AND PIPING IS SHOWN DIAGRAMMATICALLY AND DOES NOT INCLUDE ALL OFFSETS, DROPS, AND RISES. CAREFULLY COORDINATE DUCT AND PIPE ROUTING WITH STRUCTURE AS WELL AS ALL OTHER TRADES TO MAINTAIN EQUIPMENT CLEARANCES, EQUIPMENT ACCESSIBILITY, DESIRED CEILING HEIGHTS, AND AESTHETICS. THE CONTRACTOR SHALL INCLUDE ANY NEEDED OFFSETS AND CHANGES OF DIRECTION IN THE BID PRICING.
7. DUCT SIZES SHOWN ARE SHEET METAL DIMENSIONS. WHERE DUCT LINER IS REQUIRED, DUCT SIZES ARE NOT REQUIRED TO BE INCREASED TO ACCOUNT FOR LINER.
8. FURNISH ALL EXPOSED DUCTWORK IN FINISHED SPACES WITH PAINTABLE FINISH. PROVIDE A TRIM FLANGE AT WALL PENETRATIONS OF EXPOSED DUCTWORK, FINISH BY ARCHITECT.
9. AVOID ROUTING ANY PIPING THROUGH IT ROOMS OR ELECTRIC ROOMS. IN THE EVENT IT IS ABSOLUTELY NECESSARY, COORDINATE THE EXACT LOCATION SUCH THAT IT IS NOT DIRECTLY ABOVE ANY PANELS OR EQUIPMENT.

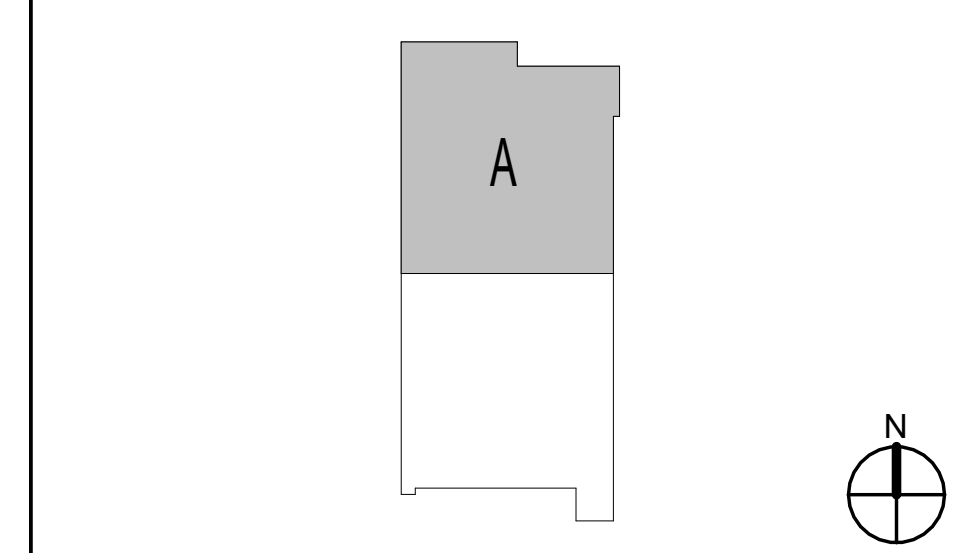
PLAN NOTES:

1. 26"x20" SUPPLY DUCT UP TO ROOFTOP UNIT.
2. 36"x24" RETURN DUCT UP TO ROOFTOP UNIT.
3. 12"x12" EXHAUST DUCT UP TO EXHAUST FAN.
4. 8"x8" EXHAUST DUCT UP TO EXHAUST FAN.

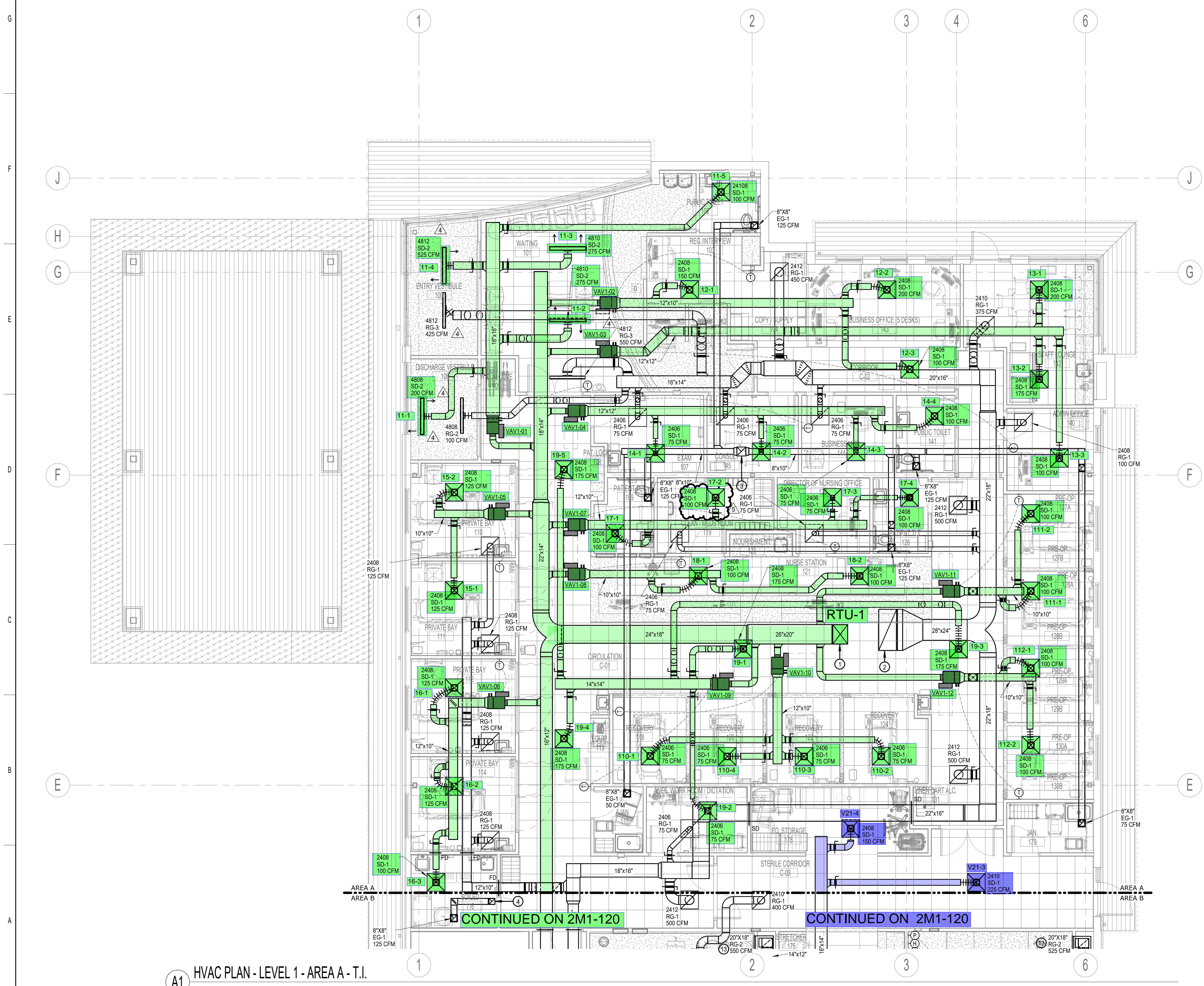


ISSUE DATE:	03/20/2025
PROJECT #:	24158
REVISION	DATE
4 ADDENDUM #4	04/04/25
5 DHSS COMMENTS	04/21/25

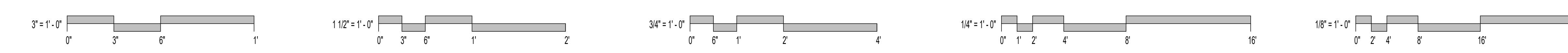
KEY PLAN

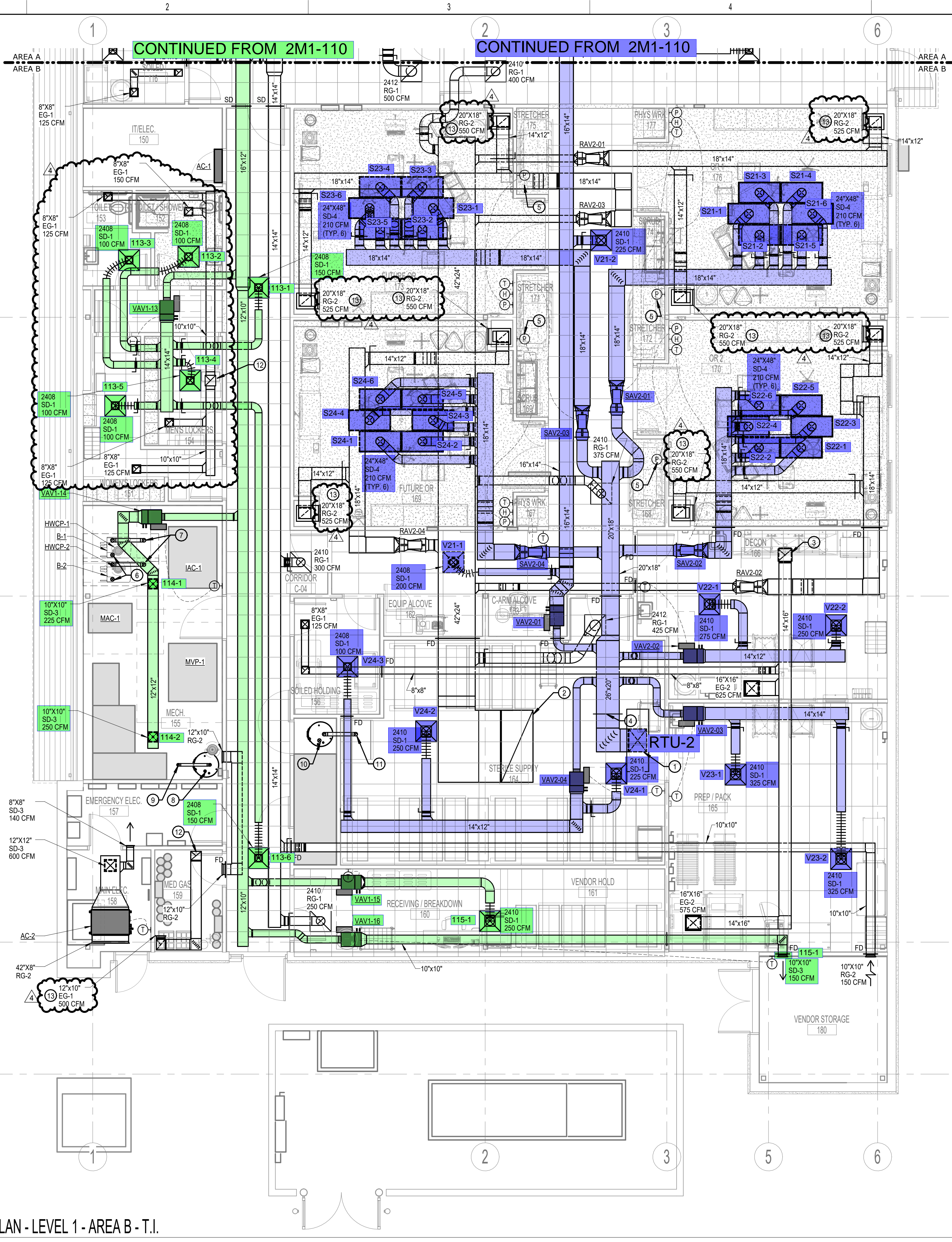


COPYRIGHT © 2023, PULSE DESIGN GROUP, INC. ALL RIGHTS RESERVED. NOTE: IF THIS DRAWING IS LESS THAN 24" X 36", IT IS A REDUCED SIZED DRAWING. DO NOT SCALE DRAWINGS



A1 HVAC PLAN - LEVEL 1 - AREA A - T.I.
 3/16" = 1'-0"





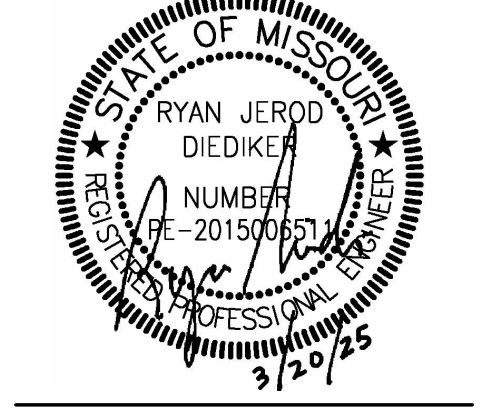
A1 HVAC PLAN - LEVEL 1 - AREA B - T.I.
3/16" = 1'-0"

* REFERENCE 'G' SERIES FOR GENERAL NOTES AND ADDITIONAL INFORMATION.

- GENERAL NOTES:
- REFER TO SHEET 2M1-110 FOR ADDITIONAL GENERAL NOTES.
- PLAN NOTES:
- 26"x20" SUPPLY DUCT UP TO ROOFTOP UNIT.
 - 42"x24" RETURN DUCT UP TO ROOFTOP UNIT.
 - 16"x14" EXHAUST DUCT UP TO EXHAUST FAN.
 - HUMIDIFIER DISPERSION TUBE MOUNTED IN SUPPLY DUCT.
 - PROVIDE ROOM PRESSURE MONITOR (ANTEC PMT OR APPROVED EQUAL) TO MONITOR PRESSURE BETWEEN OPERATING ROOM AND CORRIDOR. MOUNT DISPLAY IN CORRIDOR AT 48" AFF. MAINTAIN OPERATING ROOM AT +0.02" TO CORRIDOR.
 - 4" BOILER COMBUSTION INTAKE UP THRU ROOF.
 - 4" BOILER FLUE UP THRU ROOF.
 - 3" DOMESTIC WATER HEATER COMBUSTION INTAKE UP THRU ROOF.
 - 3" DOMESTIC WATER HEATER FLUE UP THRU ROOF.
 - 4" DOMESTIC WATER HEATER COMBUSTION INTAKE UP THRU ROOF.
 - 4" DOMESTIC WATER HEATER FLUE UP THRU ROOF.
 - 12"x12" EXHAUST DUCT UP TO EXHAUST FAN.
 - LOCATE GRILLE WITH BOTTOM OF GRILLE AT 6" AFF.

PULSE+
DESIGN GROUP

422 Pennsylvania Ave, Suite 1050
Kansas City, MO 64112
pulse+designgroup.com



smith & boucher
engineers

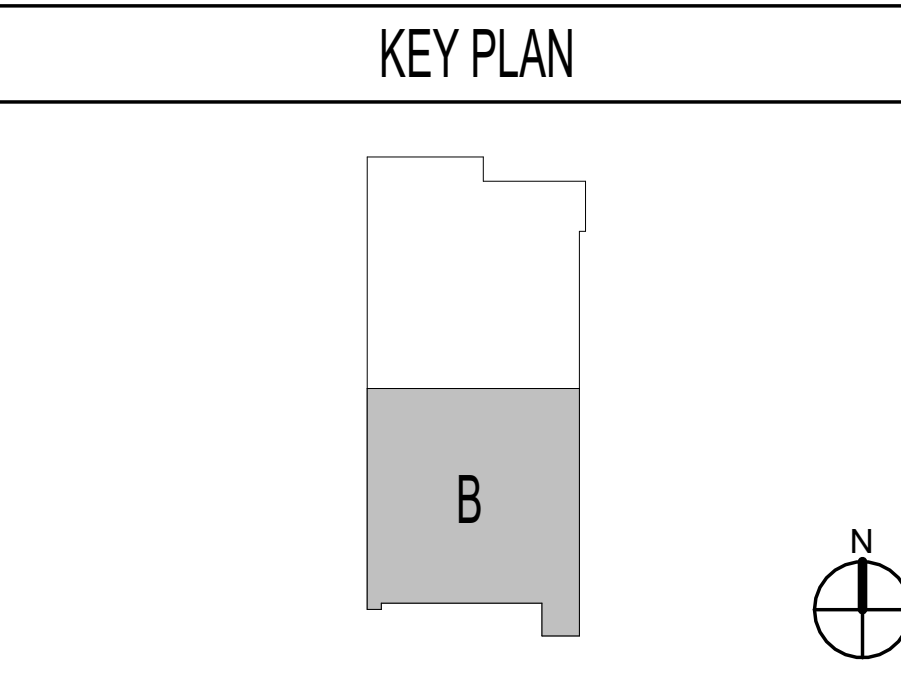
25618 west 103rd St. olathe, ks 66061
phone 913.345.2127 fax 913.345.0617
project number 2424300 P2

Platte City ASC
NUEHEALTH
PACKAGE 2 TI CONSTRUCTION DOCUMENTS

nueHealth
A ValueHealth Company

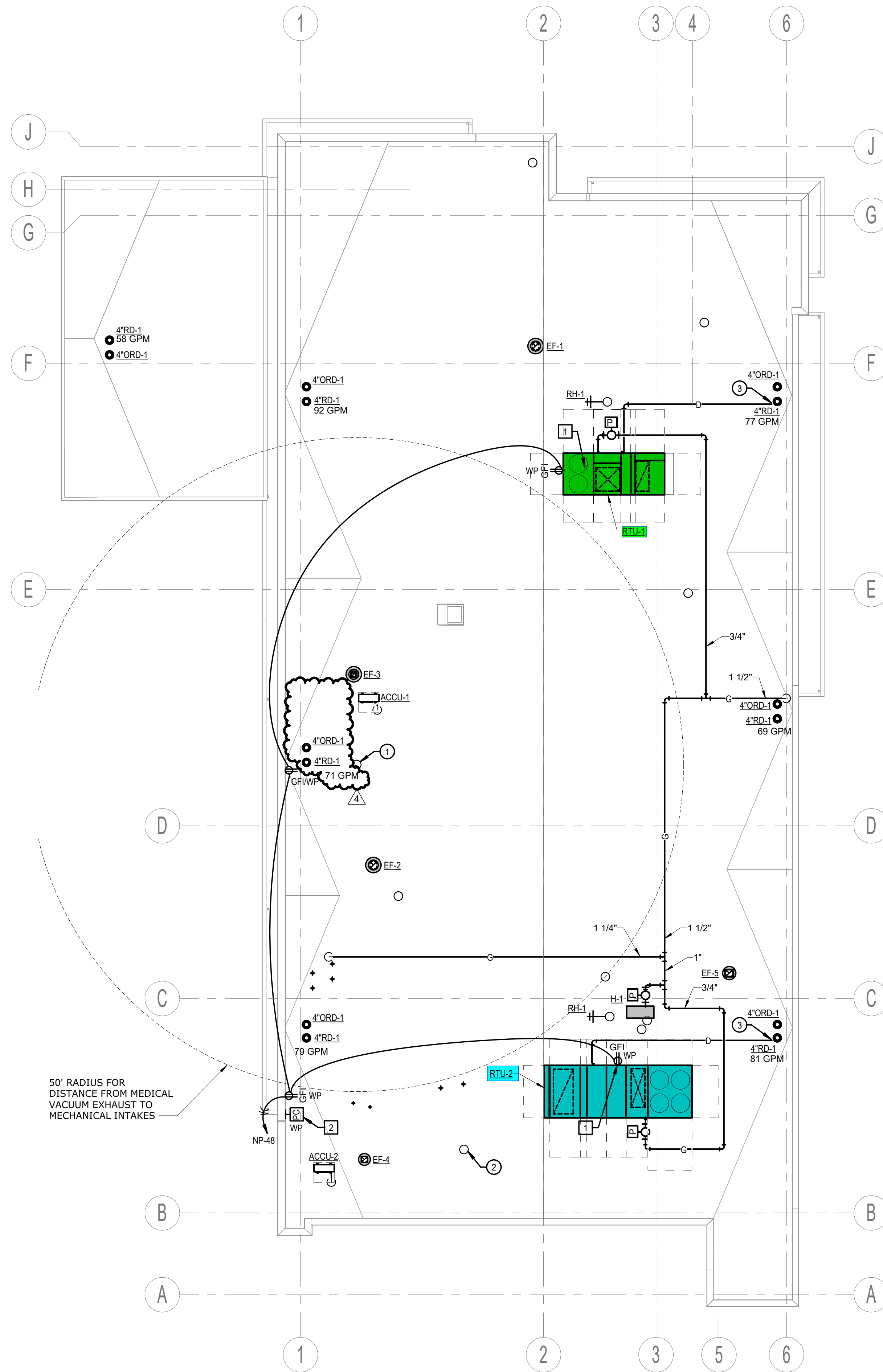
110 KENTUCKY AVENUE
PLATTE CITY, MO 64079
STATE NO. 4637660
INDSR 12346

REVISION	DATE
4 ADDENDUM #4	04/04/25



2M1-120
HVAC PLAN - LEVEL 1 - AREA B





* REFERENCE "G" SERIES FOR GENERAL NOTES AND ADDITIONAL INFORMATION.

LIGHTNING PROTECTION GENERAL NOTE:

1. FURNISH AND INSTALL A DESIGN-BUILD LIGHTNING PROTECTION SYSTEM FOR THE ENTIRE BUILDING. REFER TO PERFORMANCE SPECIFICATION SECTION 264113.

POWER GENERAL NOTE:

1. REFER TO SHEET 2E2-110 FOR TYPICAL POWER GENERAL NOTES APPLICABLE TO THE ENTIRE PROJECT.

ELECTRICAL PLAN NOTES:

- 1. RECEPTACLE PROVIDED WITH ROOFTOP UNIT BUT FIELD WIRED TO CIRCUIT SHOWN.
- 2. EXTERIOR PHOTOCELL FOR CONTROL OF RELAY PANEL LIGHTING. EXTEND CABLING TO RELAY PANEL AS REQUIRED. MOUNT PHOTOCELL ON PARAPET WALL FACING NORTH.

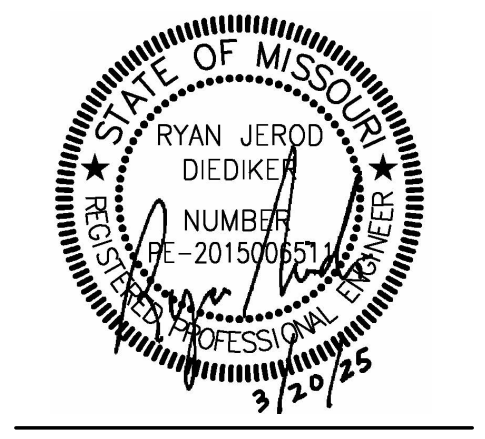
MECHANICAL PLAN NOTES:

- 1. 3" MEDICAL VACUUM EXHAUST.
- 2. 1-1/2" MEDICAL AIR INTAKE.
- 3. TERMINATE CONDENSATE DRAIN OVER ROOF DRAIN.

PULSE+ DESIGN GROUP

422 Pennsylvania Ave., Suite 1050
Kansas City, MO 64112
pulse+designgroup.com

Ph: (813) 438-9095
Fax: (813) 438-2680



smith & boucher engineers

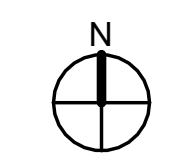
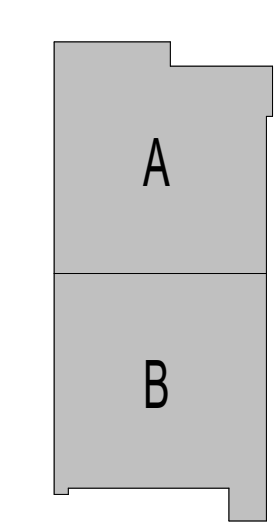
25618 west 103rd St. Olathe, KS 66061
phone 913.345.2127 fax 913.345.0617
project number 2424300 P2

nueHealth
A ValueHealth Company

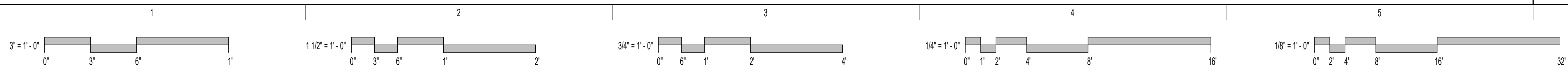
PLATTE CITY ASC
NUEHEALTH
PACKAGE 2 TI CONSTRUCTION DOCUMENTS

1101 KENTUCKY AVENUE
PLATTE CITY, MO 64079
STATE NO. 4837860
KDSIF 12345

KEY PLAN



ISSUE DATE:	03/20/2025
PROJECT #:	24158
REVISION	DATE
4 ADDENDUM #4	04/04/25



COPYRIGHT © 2023, PULSE DESIGN GROUP, INC. ALL RIGHTS RESERVED. NOTE: IF THIS DRAWING IS LESS THAN 24" X 36", IT IS A REDUCED SIZED DRAWING. DO NOT SCALE DRAWINGS

2ME2-210
OVERALL MECHANICAL & ELECTRICAL ROOF PLAN