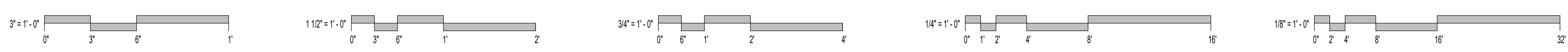


A1 HVAC PLAN - LEVEL 1 - AREA A - T.I.  
3/16" = 1'-0"

CONTINUED ON 2M1-120



\*REFERENCE "G" SERIES FOR GENERAL NOTES AND ADDITIONAL INFORMATION.

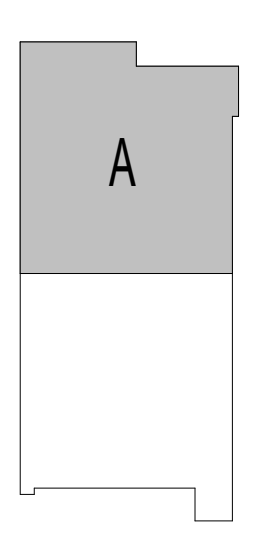
GENERAL NOTES:

- INFORMATION SHOWN ON THE DRAWINGS IS INTENDED TO CONVEY SCOPE AND IS ARRANGED FOR DRAWING CLARITY. IT IS NOT TO BE TAKEN AS AN AS-BUILT CONDITION. THE SYSTEM INSTALLATION SHALL BE COORDINATED WITH STRUCTURE, CEILING, WALLS, AND ALL OTHER TRADES TO PROVIDE FOR A COMPLETE AND WORKING SYSTEM.
- COORDINATE ALL DUCT PENETRATIONS WITH STRUCTURAL PRIOR TO CUTTING FLOORS OR BEARING WALLS.
- PROVIDE ACOUSTICAL SEALANT AT PENETRATIONS OF ALL STC-RATED WALLS. REFER TO ARCHITECTURAL PLANS FOR LOCATIONS OF STC-RATED WALLS.
- PROVIDE FIRESTOPPING AT PENETRATIONS OF ALL RATED WALLS. REFER TO CODE PLANS FOR LOCATIONS OF RATED WALLS.
- WALL MOUNTED DEVICES SUCH AS THERMOSTATS, TEMPERATURE SENSORS, HUMIDITY SENSORS, AND PRESSURE SENSORS ARE SHOWN ON PLANS FOR CLAIRTY AND GENERAL REFERENCE OF LOCATIONS. LOCATIONS SHOW ARE NOT TO BE CONSIDERED THE EXACT MOUNTING LOCATION. COORDINATE THE INSTALLATION OF ALL WALL MOUNTED DEVICES WITH THE ARCHITECTURAL ELEVATIONS AND OTHER TRADES WALL MOUNTED DEVICES. GROUP THE INSTALLATION OF ALL THE DEVICES TO THE EXTENT POSSIBLE AND LOCATED DEVICES SUCH THAT THEY DO NOT CONFLICT WITH MILL WORK, TELEVISIONS, FURNITURE, TEACHING BOARDS, AND OTHER SIMILAR OBSTRUCTIONS.
- ALL DUCTWORK AND PIPING IS SHOWN DIAGRAMMATICALLY AND DOES NOT INCLUDE ALL OFFSETS, DROPS, AND RISES. CAREFULLY COORDINATE DUCT AND PIPE ROUTING WITH STRUCTURE AS WELL AS ALL OTHER TRADES TO MAINTAIN EQUIPMENT CLEARANCES, EQUIPMENT ACCESSIBILITY, DESIRED CEILING HEIGHTS, AND AESTHETICS. THE CONTRACTOR SHALL INCLUDE ANY NEEDED OFFSETS AND CHANGES OF DIRECTION IN THE BID PRICING.
- DUCT SIZES SHOWN ARE SHEET METAL DIMENSIONS. WHERE DUCT LINER IS REQUIRED, DUCT SIZES ARE NOT REQUIRED TO BE INCREASED TO ACCOUNT FOR LINER.
- FURNISH ALL EXPOSED DUCTWORK IN FINISHED SPACES WITH PAINTABLE FINISH. PROVIDE A TRIM FLANGE AT WALL PENETRATIONS OF EXPOSED DUCTWORK, FINISH BY ARCHITECT.
- AVOID ROUTING ANY PIPING THROUGH IT ROOMS OR ELECTRIC ROOMS. IN THE EVENT IT IS ABSOLUTELY NECESSARY, COORDINATE THE EXACT LOCATION SUCH THAT IT IS NOT DIRECTLY ABOVE ANY PANELS OR EQUIPMENT.

PLAN NOTES:

- 26"x20" SUPPLY DUCT UP TO ROOFTOP UNIT.
- 36"x24" RETURN DUCT UP TO ROOFTOP UNIT.
- 12"x12" EXHAUST DUCT UP TO EXHAUST FAN.
- 8"x8" EXHAUST DUCT UP TO EXHAUST FAN.

KEY PLAN



**PULSE+ DESIGN GROUP**  
 422 Pennsylvania Ave., Suite 1050  
 Kansas City, MO 64112  
 pulse+designgroup.com  
 PR. (813) 438-9095  
 FX. (813) 438-2680

STATE OF MISSOURI  
 RYAN JEROD DIEDIKER  
 NUMBER 201500020  
 EXPIRES 3/20/25  
 PROFESSIONAL ENGINEER

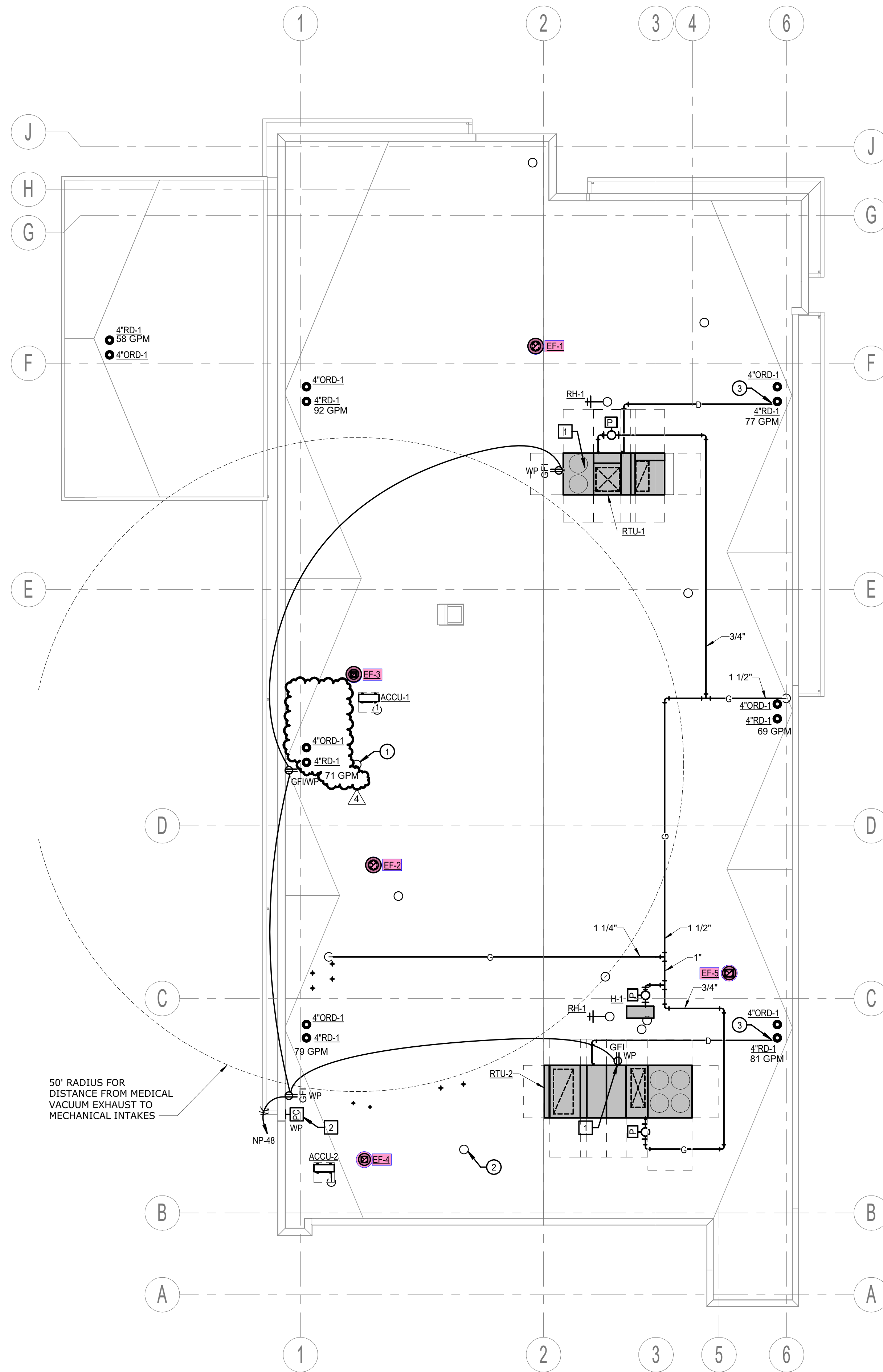
**smith & boucher engineers**  
 25618 west 103rd St. olathe, ks 66061  
 phone 913.345.2127 fax 913.345.0617  
 project number 2424300 P2

PLATE CITY ASC  
 NUEHEALTH  
 PACKAGE 2 TI CONSTRUCTION DOCUMENTS

**nueHealth**  
 A ValueHealth Company  
 110 KENTUCKY AVENUE  
 PLATE CITY, MO 64079  
 STATE NO. 4837860  
 RDS# 12346

ISSUE DATE:	03/20/2025
PROJECT #:	24158
REVISION	DATE
4 ADDENDUM #	04/04/25
5 DHSS COMMENTS	04/21/25





A1 MECHANICAL AND ELECTRICAL ROOF PLAN - T.I. 3/32" = 1'-0"

\* REFERENCE "G" SERIES FOR GENERAL NOTES AND ADDITIONAL INFORMATION.

LIGHTNING PROTECTION GENERAL NOTE:

1. FURNISH AND INSTALL A DESIGN-BUILD LIGHTNING PROTECTION SYSTEM FOR THE ENTIRE BUILDING. REFER TO PERFORMANCE SPECIFICATION SECTION 264113.

POWER GENERAL NOTE:

1. REFER TO SHEET 2E2-110 FOR TYPICAL POWER GENERAL NOTES APPLICABLE TO THE ENTIRE PROJECT.

ELECTRICAL PLAN NOTES:

- 1 RECEPTACLE PROVIDED WITH ROOFTOP UNIT BUT FIELD WIRED TO CIRCUIT SHOWN.
- 2 EXTERIOR PHOTOCELL FOR CONTROL OF RELAY PANEL LIGHTING. EXTEND CABLING TO RELAY PANEL AS REQUIRED. MOUNT PHOTOCELL ON PARAPET WALL FACING NORTH.

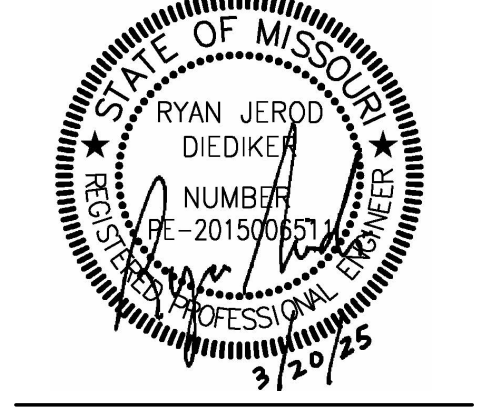
MECHANICAL PLAN NOTES:

- 1 3" MEDICAL VACUUM EXHAUST.
- 2 1-1/2" MEDICAL AIR INTAKE.
- 3 TERMINATE CONDENSATE DRAIN OVER ROOF DRAIN.

**PULSE+ DESIGN GROUP**

422 Pennsylvania Ave., Suite 1050  
Kansas City, MO 64112  
pulse+designgroup.com

PH: (816) 438-9095  
FX: (816) 438-2680



**smith & boucher engineers**

25618 west 103rd St. olathe, ks 66061  
phone 913.345.2127 fax 913.345.0617  
project number 2424300 P2

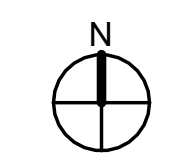
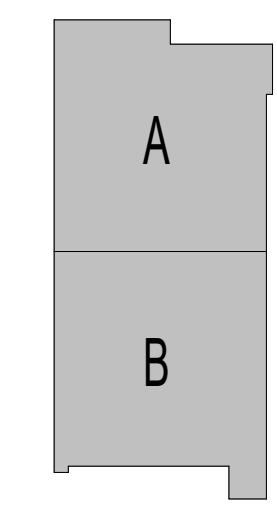
**nueHealth**  
A valueHealth Company

PLATTE CITY ASC  
NUEHEALTH  
PACKAGE 2 TI CONSTRUCTION DOCUMENTS

1101 KENTUCKY AVENUE  
PLATTE CITY, MO 64079

STATE NO. 4637860  
KDSIF 12346

KEY PLAN



ISSUE DATE:	03/20/2025
PROJECT #:	24158
REVISION	DATE
4 ADDENDUM #4	04/04/25



COPYRIGHT © 2023, PULSE DESIGN GROUP, INC. ALL RIGHTS RESERVED. NOTE: IF THIS DRAWING IS LESS THAN 24" X 36", IT IS A REDUCED SIZED DRAWING. DO NOT SCALE DRAWINGS

**2ME2-210**  
OVERALL MECHANICAL & ELECTRICAL ROOF PLAN