



Forge Construction LLC
 1307 Union Ave
 Kansas City, Missouri 64101
 P: (816) 608-1800

Project: 25-004 Platte City ASC
 1101 Kentucky Avenue
 Platte City, Missouri 64079

Submittal #97.0 - Exhaust Fans

Revision	0	Submittal Manager	Michael Davidson (Forge Construction LLC)
Status	In Review	Date Created	May 28, 2025
Issue Date	May 28, 2025	Spec Section	
Responsible Contractor	Temp-Con, Inc.	Received From	Phillip Garcia (Temp-Con, Inc.)
Received Date	May 28, 2025	Submit By	
Final Due Date	Jun 4, 2025	Lead Time	
		Cost Code	
Location		Type	Product Information
Submittal Package			
Approvers	Rebecca Eubanks (Smith & Boucher), Jared Langenfield (Smith & Boucher)		
Ball in Court	Rebecca Eubanks (Smith & Boucher), Jared Langenfield (Smith & Boucher)		
Distribution			
Description	Product info for exhaust fans		

Submittal Workflow

Name	Sent Date	Due Date	Returned Date	Response	Attachments
General Information					23-10 EF's.pdf
Attachments					
Rebecca Eubanks	May 28, 2025	Jun 4, 2025		Pending	
Jared Langenfield	May 28, 2025	Jun 4, 2025		Pending	

**CONTRACTOR REVIEW ONLY
FORGE CONSTRUCTION**

Contractor's review is for general compliance with the information provided in the Contract Documents and for general conformance with the design concept of the project. Any action noted herein is subject to the requirements set forth in the Contract Documents. Subcontractor and/or Supplier shall be responsible for all dimensions and techniques of construction; the coordination of Subcontractor's work with that of all other trades; and the performance of Subcontractor's work in accordance with Contract Documents.

PROJECT #: 25-004

SUBMITTAL #: 23-10

BY: MICHAEL DAVIDSON

DATE: 05.28.25

FORGE NOTES:

- EF-2 is 100 CFM over sized and on a direct drive
- Approved manufacturer
- Mechanical engineers please review



- Reviewed no exceptions.
- Make corrections noted; resubmittal not required.
- Make corrections noted; revise and resubmit indicated items only.
- Revise and resubmit entire submittal.
- Reviewed for coordination/information only; refer to comments if any.

Review of this submittal is only for general conformance with the design concept of the project and-for general compliance with those portions of the Contract Documents prepared by Smith & Boucher. Notes, corrections or comments made on the submittals during this review do not relieve the Contractor from responsibility for: Compliance with the requirements of the plans and specifications; Dimensions to be confirmed and correlated at the jobsite; Information that pertains solely to the fabrication processes or to the means, methods, techniques, sequences and procedures of construction; Coordination of the Work with that of all other trades; Assemblies of which a specific reviewed item is a component; and performance of all work in a safe and satisfactory manner.

Received: 05/28/2025 1:58:16 PM

Returned: 06.05.2025 By: Jared Langenfeld, PE

TEMP-CON

A TRIPLEPOINT COMPANY

15670 S. Keeler
Olathe KS 66062
(913) 768-4888

Submittal

Submittal#: 23.34.00

Submittal Date: 05/28/2025

To: FORGE CONSTRUCTION
1307 Union Avenue
Kansas City, MO 64101

Project: 250017
Platte City ASC - NueHealth
1101 Kentucky Avenue
Platte City, Missouri 64079

Prepared By: Phillip Garcia

Item	Description	Action Required	Date Required
001	Exhaust Fans	For Approval	06/11/2025

Please sign and date this form as proof that you are in receipt of the above listed items.
Return form to Temp-Con, LLC

Signed: _____ Date: _____



**Job: PLATTE CITY ASC NUEHEALTH
5/27/2025**

MARK	QTY	MODEL	VOL (CFM)	SP (inwc)	PWR (HP)	MHP	RPM	SONES	DRIVE	TSPD (fpm)	OVEL (fpm)	SE	WEIGHT (lbs)
EF-1	1	100C17DEC	625	.5	141.w	.25	1705	9.2	DIRECT	4463	730	33%	58
MOTOR INFO: ENCL= OPEN -EC; MOTOR RPM = 1725/0000; ELECTRICAL = 115/1/60 OPEN -1/4HP - 115V/1 PH/ 60 1725/0000 -EC DISCONNECT NEMA 3 BDM-12 MTR DPR 115V RCG 16 18H CURB -C-T+N													
EF-2	1	100C17DEC	525	.5	110.w	.25	1580	8.3	DIRECT	4136	613	35%	58
MOTOR INFO: ENCL= OPEN -EC; MOTOR RPM = 1725/0000; ELECTRICAL = 115/1/60 OPEN -1/4HP - 115V/1 PH/ 60 1725/0000 -EC DISCONNECT NEMA 3 BDM-12 MTR DPR 115V RCG 16 18H CURB -C-T+N													
EF-3	1	70C17DEC	125	.3	24.7w	.05	1620	4.	DIRECT	2968	304	22%	51
MOTOR INFO: ENCL= TENV -PM; MOTOR RPM = 1725/0000; ELECTRICAL = 115/1/60 TENV -1/20HP - 115V/1 PH/ 60 1725/0000 -EC DISCONNECT NEMA 3 BDM-12 MTR DPR 115V RCG 16 18H CURB -C-T+N													
EF-4	1	90C17DEC	500	.3	76.5w	.167	1554	6.8	DIRECT	3661	648	29%	57
MOTOR INFO: ENCL= OPEN -EC; MOTOR RPM = 1725/0000; ELECTRICAL = 115/1/60 OPEN -1/6HP - 115V/1 PH/ 60 1725/0000 -EC DISCONNECT NEMA 3 BDM-12 MTR DPR 115V RCG 16 18H CURB -C-T+N													
EF-5	1	120C17DEC	1200	.5	210.w	.5	1468	10.9	DIRECT	4611	1264	42%	72
MOTOR INFO: ENCL= OPEN -EC; MOTOR RPM = 1725/0000; ELECTRICAL = 115/1/60 OPEN -1/2HP - 115V/1 PH/ 60 1725/0000 -EC DISCONNECT NEMA 3 BDM-14 MTR DPR 115V RCG 18 18H CURB -C-T+N													



COOK



MARK: EF-1

PROJECT: PLATTE CITY ASC NUEHEALTH

DATE: 5/27/2025

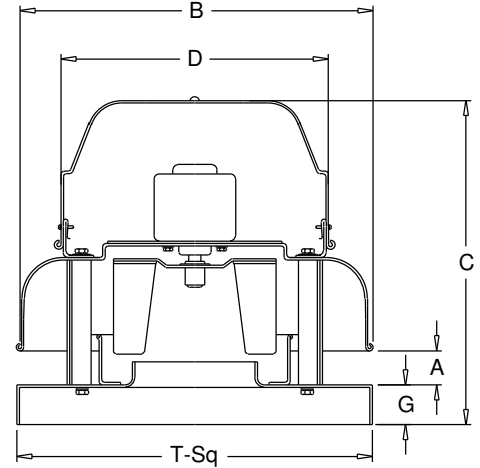
ACED-EC

**Downblast Centrifugal
Exhaust Ventilator
Roof Mounted/Direct Drive**

Electronically Commutated Vari-Flow® Motor

STANDARD CONSTRUCTION FEATURES:

All aluminum housing - Backward inclined all aluminum wheel - Two piece top cap with stainless steel quick release latches (sizes 101 - 135) - Welded curb cap corners - Birdscreen - Permanently lubricated ball bearing electronically commutated motor - Power rated in Input Watts - Corrosion resistant fasteners - Transit tested packaging.



Performance

Qty	Catalog Number	Flow (CFM)	SP (inwc)	Fan RPM	Input Watts	FEG	Speed Control
1	100C17DEC	625	.500	1705	141	n/a(<1HP)	EC

Altitude (ft): 1034 Temperature (F): 70

Motor Information

HP	RPM	Volts/Ph/Hz	Enclosure
1/4	1725	115/1/60	OPEN -EC



Motor is electronically/thermally protected.

Sound Data Inlet Sound Power by Octave Band

1	2	3	4	5	6	7	8	LwA	dBA	Sones
64	79	75	65	63	57	51	46	70	59	9.3

- Distance from Sound source 5 ft

Accessories:

- FAN MOUNTED SPEED CONTROL DISCONNECT NEMA 3
- BDM-12 MTR DPR 115V
- ROOF CURB RCG 16 18H -C-T+N

Dimensions (inches)

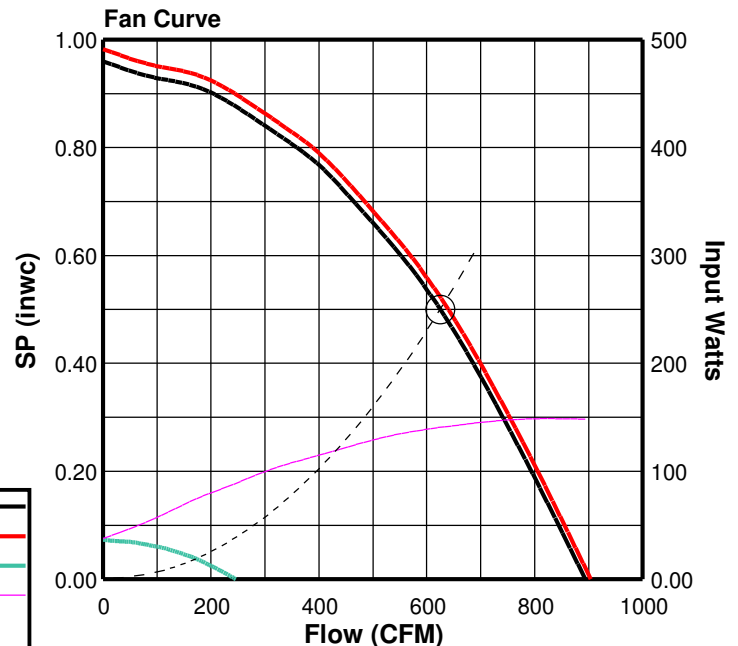
A	2-1/2
B O.D.	18-3/4
C	16-13/16
D O.D.	16-3/4
G	2
T Sq.	18
Roof Open. Sq.*	13-1/2

NOTE: Accessories may affect dimensions shown.

Weight(lbs)***	Shipping	66	Unit	58
----------------	----------	----	------	----

* Roof opening size for curbs supplied by Cook only.

***Includes fan, motor & accessories.





COOK



MARK: EF-2

PROJECT: PLATTE CITY ASC NUEHEALTH

DATE: 5/27/2025

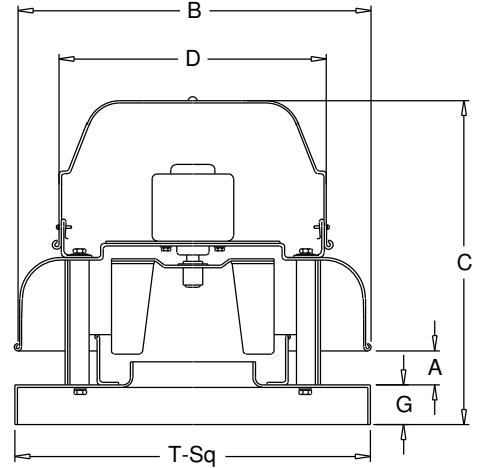
ACED-EC

**Downblast Centrifugal Exhaust Ventilator
Roof Mounted/Direct Drive**

Electronically Commutated Vari-Flow® Motor

STANDARD CONSTRUCTION FEATURES:

All aluminum housing - Backward inclined all aluminum wheel - Two piece top cap with stainless steel quick release latches (sizes 101 - 135) - Welded curb cap corners - Birdscreen - Permanently lubricated ball bearing electronically commutated motor - Power rated in Input Watts - Corrosion resistant fasteners - Transit tested packaging.



Performance

Qty	Catalog Number	Flow (CFM)	SP (inwc)	Fan RPM	Input Watts	FEG	Speed Control
1	100C17DEC	525	.500	1580	110	n/a(<1HP)	EC

Altitude (ft): 1034 Temperature (F): 70

Motor Information

HP	RPM	Volts/Ph/Hz	Enclosure
1/4	1725	115/1/60	OPEN -EC



Motor is electronically/thermally protected.

Sound Data Inlet Sound Power by Octave Band

1	2	3	4	5	6	7	8	LwA	dBA	Sones
64	77	74	63	59	53	48	43	68	57	8.3

- Distance from Sound source 5 ft

Accessories:

- FAN MOUNTED SPEED CONTROL
- DISCONNECT NEMA 3
- BDM-12 MTR DPR 115V
- ROOF CURB RCG 16 18H -C-T+N

Dimensions (inches)

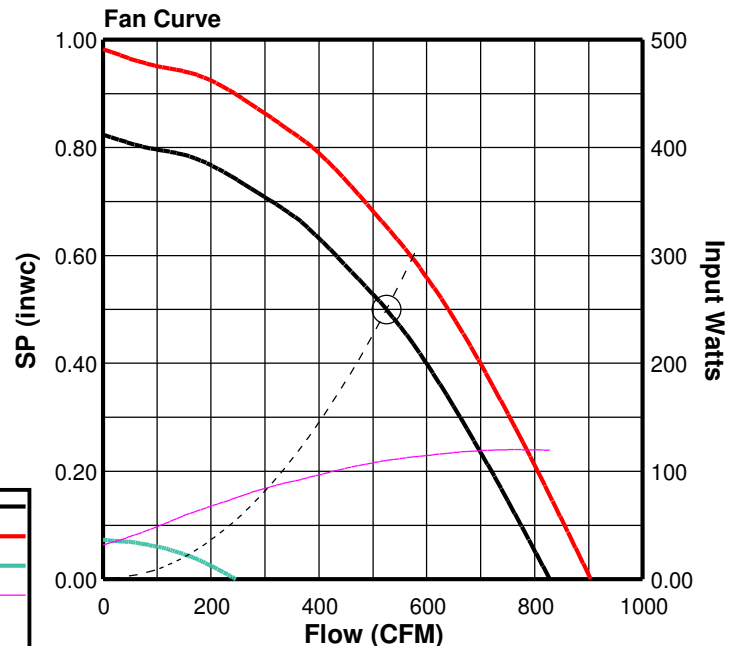
A	2-1/2
B O.D.	18-3/4
C	16-13/16
D O.D.	16-3/4
G	2
T Sq.	18
Roof Open. Sq.*	13-1/2

NOTE: Accessories may affect dimensions shown.

Weight(lbs)***	Shipping	66	Unit	58
----------------	----------	----	------	----

* Roof opening size for curbs supplied by Cook only.

***Includes fan, motor & accessories.





COOK



MARK: EF-3

PROJECT: PLATTE CITY ASC NUEHEALTH

DATE: 5/27/2025

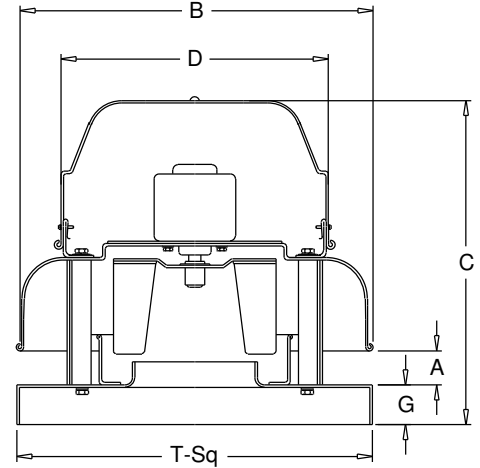
ACED-EC

**Downblast Centrifugal
Exhaust Ventilator
Roof Mounted/Direct Drive**

Electronically Commutated Vari-Flow® Motor

STANDARD CONSTRUCTION FEATURES:

All aluminum housing - Backward inclined all aluminum wheel - Two piece top cap with stainless steel quick release latches (sizes 101 - 135) - Welded curb cap corners - Birdscreen - Permanently lubricated ball bearing electronically commutated motor - Power rated in Input Watts - Corrosion resistant fasteners - Transit tested packaging.



Performance

Qty	Catalog Number	Flow (CFM)	SP (inwc)	Fan RPM	Input Watts	FEG	Speed Control
1	70C17DEC	125	.300	1620	25	n/a(<1HP)	EC

Altitude (ft): 1034 Temperature (F): 70

Motor Information

HP	RPM	Volts/Ph/Hz	Enclosure
1/20	1725	115/1/60	TENV -PM



Motor is electronically/thermally protected.

Sound Data Inlet Sound Power by Octave Band

1	2	3	4	5	6	7	8	LwA	dBA	Sones
58	63	63	51	46	44	38	35	57	45	4.0

- Distance from Sound source 5 ft

Accessories:

- FAN MOUNTED SPEED CONTROL DISCONNECT NEMA 3
- BDM-12 MTR DPR 115V
- ROOF CURB RCG 16 18H -C-T+N

Dimensions (inches)

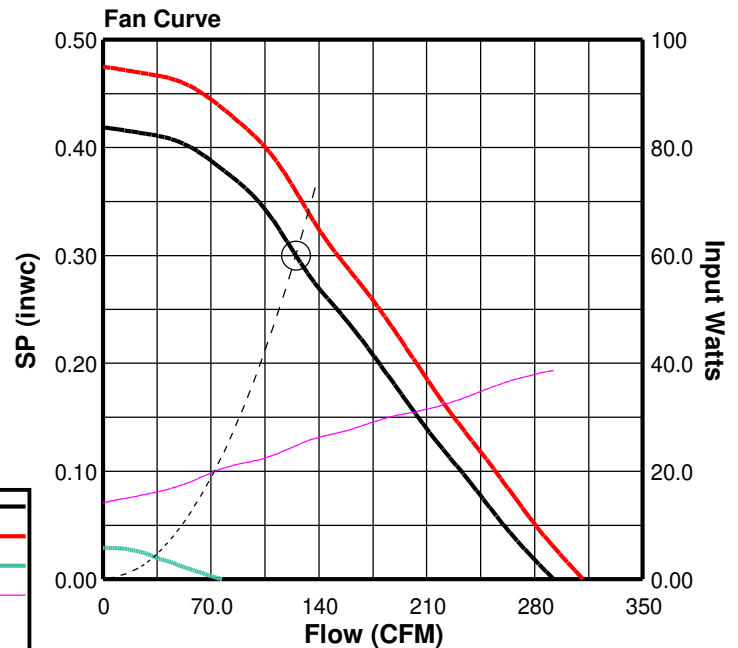
A	1-3/4
B O.D.	13-5/8
C	13-13/16
D O.D.	16-3/4
G	2
T Sq.	18
Roof Open. Sq.*	13-1/2

NOTE: Accessories may affect dimensions shown.

Weight(lbs)***	Shipping	56	Unit	51
----------------	----------	----	------	----

* Roof opening size for curbs supplied by Cook only.

***Includes fan, motor & accessories.





COOK



MARK: EF-4

PROJECT: PLATTE CITY ASC NUEHEALTH

DATE: 5/27/2025

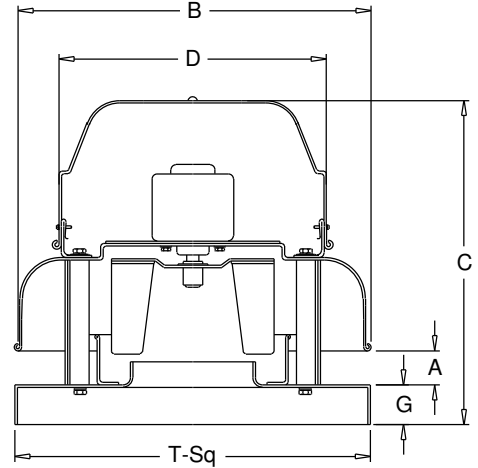
ACED-EC

**Downblast Centrifugal Exhaust Ventilator
Roof Mounted/Direct Drive**

Electronically Commutated Vari-Flow® Motor

STANDARD CONSTRUCTION FEATURES:

All aluminum housing - Backward inclined all aluminum wheel - Two piece top cap with stainless steel quick release latches (sizes 101 - 135) - Welded curb cap corners - Birdscreen - Permanently lubricated ball bearing electronically commutated motor - Power rated in Input Watts - Corrosion resistant fasteners - Transit tested packaging.



Performance

Qty	Catalog Number	Flow (CFM)	SP (inwc)	Fan RPM	Input Watts	FEG	Speed Control
1	90C17DEC	500	.300	1554	77	n/a(<1HP)	EC

Altitude (ft): 1034 Temperature (F): 70

Motor Information

HP	RPM	Volts/Ph/Hz	Enclosure
1/6	1725	115/1/60	OPEN -EC



Motor is electronically/thermally protected.

Sound Data Inlet Sound Power by Octave Band

1	2	3	4	5	6	7	8	LwA	dBA	Sones
63	70	71	61	57	51	45	40	65	54	6.8

- Distance from Sound source 5 ft

Accessories:

- FAN MOUNTED SPEED CONTROL DISCONNECT NEMA 3
- BDM-12 MTR DPR 115V
- ROOF CURB RCG 16 18H -C-T+N

Dimensions (inches)

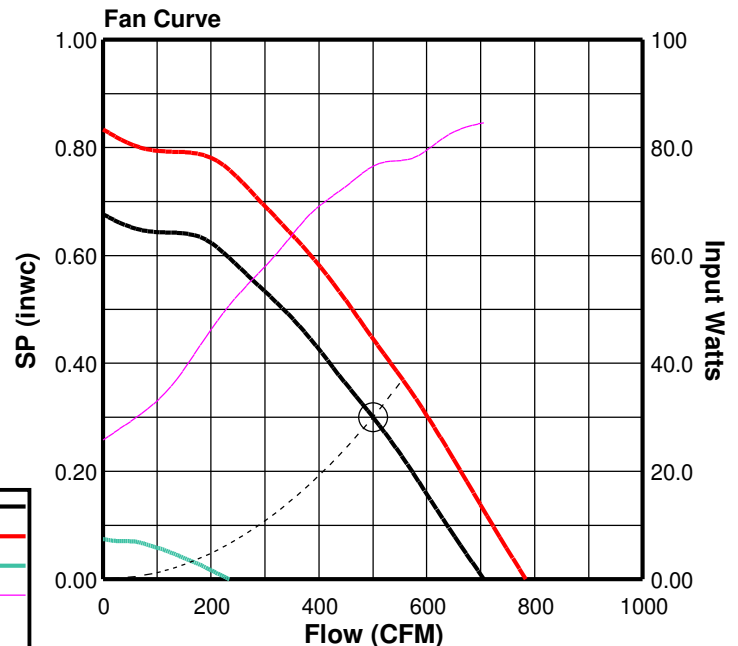
A	2-1/2
B O.D.	18-3/4
C	16-13/16
D O.D.	16-3/4
G	2
T Sq.	18
Roof Open. Sq.*	13-1/2

NOTE: Accessories may affect dimensions shown.

Weight(lbs)***	Shipping	65	Unit	57
----------------	----------	----	------	----

* Roof opening size for curbs supplied by Cook only.

***Includes fan, motor & accessories.





COOK



MARK: EF-5

PROJECT: PLATTE CITY ASC NUEHEALTH

DATE: 5/27/2025

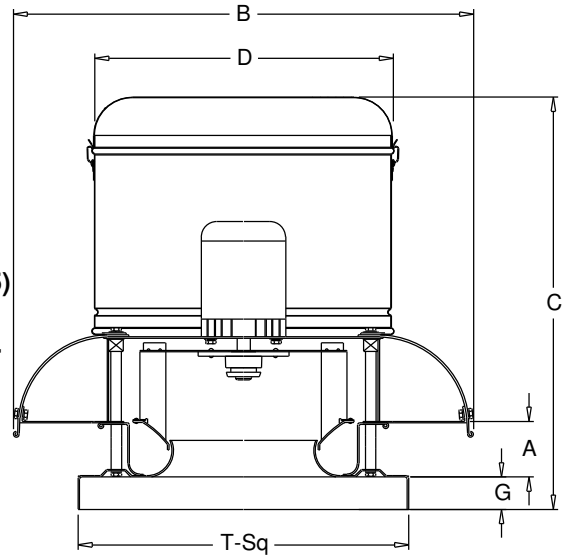
ACED-EC

**Downblast Centrifugal
Exhaust Ventilator
Roof Mounted/Direct Drive**

Electronically Commutated Vari-Flow® Motor

STANDARD CONSTRUCTION FEATURES:

- All aluminum housing - Backward inclined all aluminum wheel - Two piece top cap with stainless steel quick release latches (sizes 101 - 135)
- Welded curb cap corners - Birdscreen - Permanently lubricated ball bearing electronically commutated motor - Power rated in Input Watts - Corrosion resistant fasteners - Transit tested packaging.



Performance

Qty	Catalog Number	Flow (CFM)	SP (inwc)	Fan RPM	Input Watts	FEG	Speed Control
1	120C17DEC	1200	.500	1468	210	n/a(<1HP)	EC

Altitude (ft): 1034 Temperature (F): 70

Motor Information

HP	RPM	Volts/Ph/Hz	Enclosure
1/2	1725	115/1/60	OPEN -EC



Motor is electronically/thermally protected.

Sound Data Inlet Sound Power by Octave Band

1	2	3	4	5	6	7	8	LwA	dBA	Sones
71	74	77	70	65	64	57	52	73	61	10.9

- Distance from Sound source 5 ft

Accessories:

- FAN MOUNTED SPEED CONTROL
- DISCONNECT NEMA 3
- BDM-14 MTR DPR 115V
- ROOF CURB RCG 18 18H -C-T+N

Dimensions (inches)

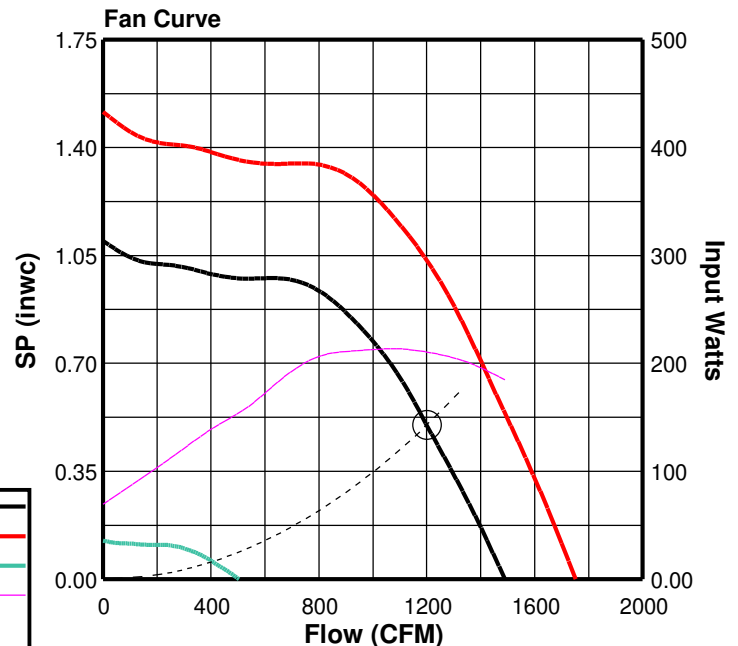
A	1-7/16
B O.D.	28-7/16
C	27-1/16
D O.D.	20-3/8
G	2
T Sq.	20
Roof Open. Sq.*	15-1/2

NOTE: Accessories may affect dimensions shown.

Weight(lbs)***	Shipping	88	Unit	72
----------------	----------	----	------	----

* Roof opening size for curbs supplied by Cook only.

***Includes fan, motor & accessories.



Fan Curve Legend

CFM vs SP (1468)	—
100% EC (1725)	—
Min EC (496)	—
CFM vs Watts	—
Point of Operation	○
System Curve	- - -



COOK

PROJECT: PLATTE CITY ASC NUEHEALTH

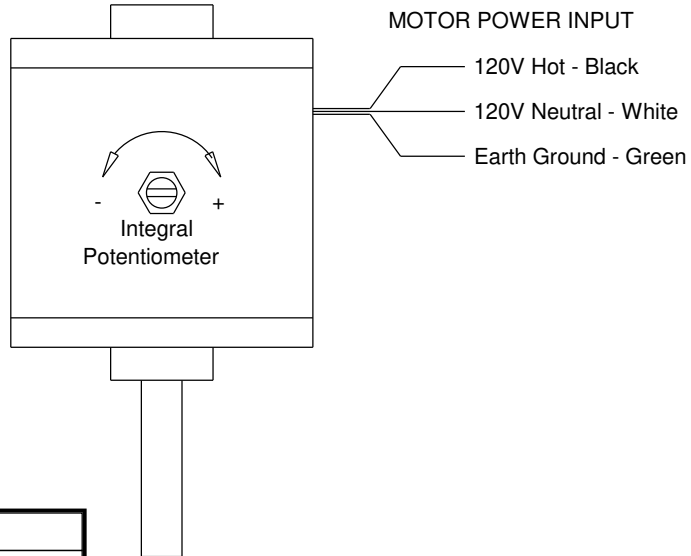
DATE: 5/27/2025

Speed Control

Internal Speed Control
Electronically Commutated (EC) Motor
Type M

STANDARD CONSTRUCTION FEATURES:

Integral potentiometer with slotted screw for speed adjustment.



Dimensions (inches)

Mark	Qty	Description
EF-1	1	OPEN -1/4HP - 115V/1 PH/ 60 1725/0000 -EC
EF-2	1	OPEN -1/4HP - 115V/1 PH/ 60 1725/0000 -EC
EF-4	1	OPEN -1/6HP - 115V/1 PH/ 60 1725/0000 -EC



BDM

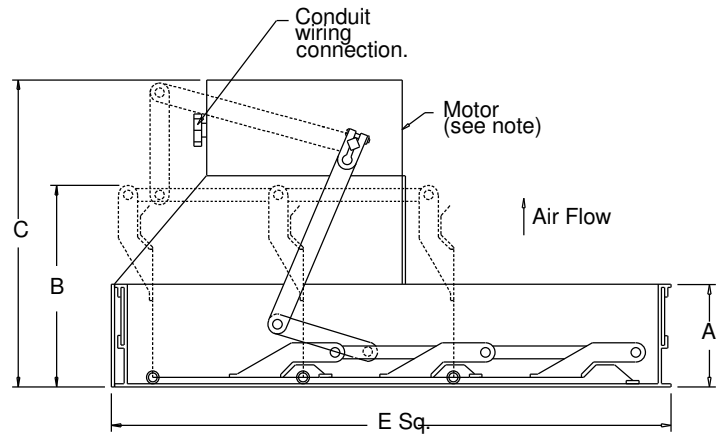
Motorized Backdraft Damper

STANDARD CONSTRUCTION FEATURES:

- .020 aluminum blades - .060
- aluminum frame - Aluminum hinge
- pins - Brass bushings -
- Non-overloading motor.

Notes:

Max operating temperature 130 Deg F (50 Deg C)



Dimensions (inches)

Mark	Qty	Description	A	B Max	C	E Sq.	# Motors
EF-1	1	BDM-12 MTR DPR 115V	1-7/8	5-3/16	8	11-3/4	1
EF-2	1	BDM-12 MTR DPR 115V	1-7/8	5-3/16	8	11-3/4	1
EF-3	1	BDM-12 MTR DPR 115V	1-7/8	5-3/16	8	11-3/4	1
EF-4	1	BDM-12 MTR DPR 115V	1-7/8	5-3/16	8	11-3/4	1
EF-5	1	BDM-14 MTR DPR 115V	1-7/8	5-3/16	8	13-3/4	1



RCG

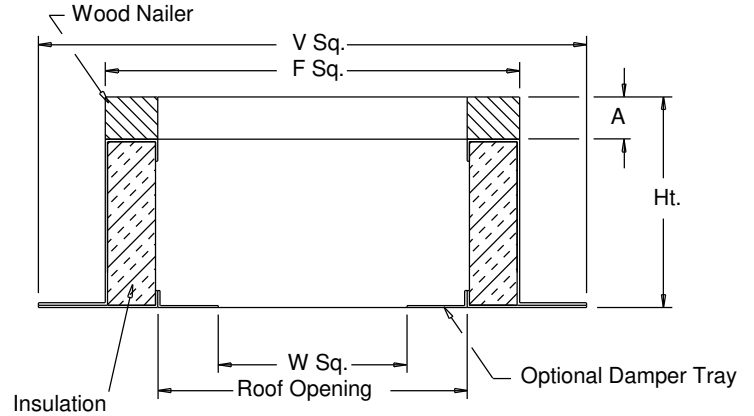
Galvanized Steel Roof Curb

STANDARD CONSTRUCTION FEATURES:

18 gauge galvanized steel - 1-1/2",
 3 lbs. density thermal and acoustical insulation - Continuously welded corners - Wood nailer.

Options:(As noted below*)

- 1) No wood nailer (deduct 1-1/2" for actual height).
- 2) Damper tray.
- 3) Liner.
- 4) Gasket on wood nailer.
- 5) Lorenized coating.
- 6) Enamel coating.
- 7) Burglar bars.



Dimensions (inches)

Mark	Qty	Description	Ht	Options*	A	F Sq.	V Sq.	W Sq.	Roof Opening
EF-1	1	RCG 16	18	-	1-1/2	16-1/2	20-1/2	9-3/4	13-1/2
EF-2	1	RCG 16	18	-	1-1/2	16-1/2	20-1/2	9-3/4	13-1/2
EF-3	1	RCG 16	18	-	1-1/2	16-1/2	20-1/2	9-3/4	13-1/2
EF-4	1	RCG 16	18	-	1-1/2	16-1/2	20-1/2	9-3/4	13-1/2
EF-5	1	RCG 18	18	-	1-1/2	18-1/2	22-1/2	11-3/4	15-1/2



COOK

PROJECT: PLATTE CITY ASC NUEHEALTH

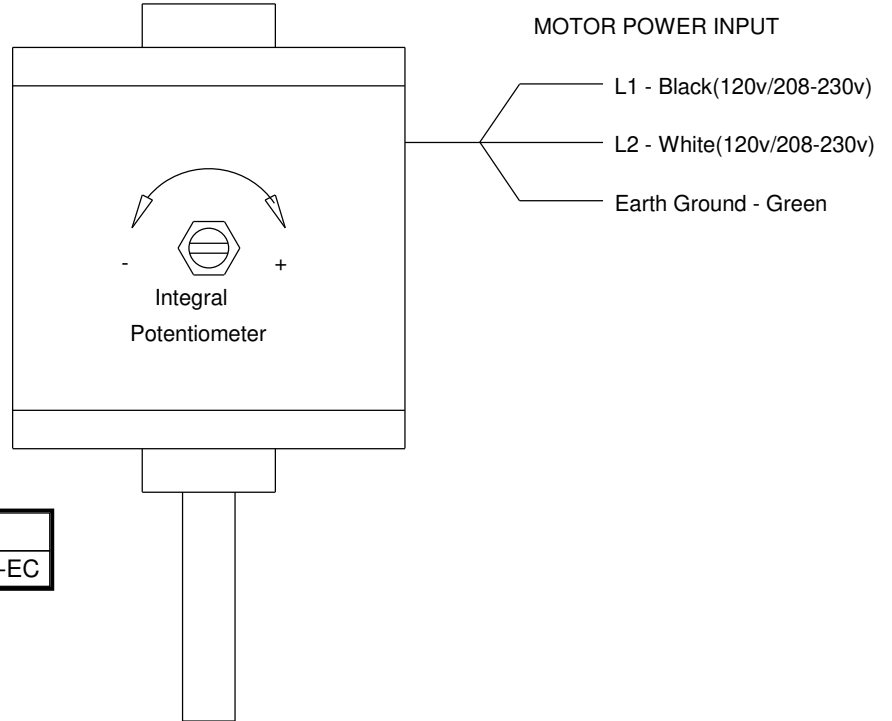
DATE: 5/27/2025

Speed Control

Internal Speed Control
Electronically Commutated (EC) Motor
Type P

STANDARD CONSTRUCTION FEATURES:

Integral potentiometer with slotted screw
for speed adjustment.



Dimensions (inches)

Mark	Qty	Description
EF-3	1	TENV -1/20HP - 115V/1 PH/ 60 1725/0000 -EC



COOK

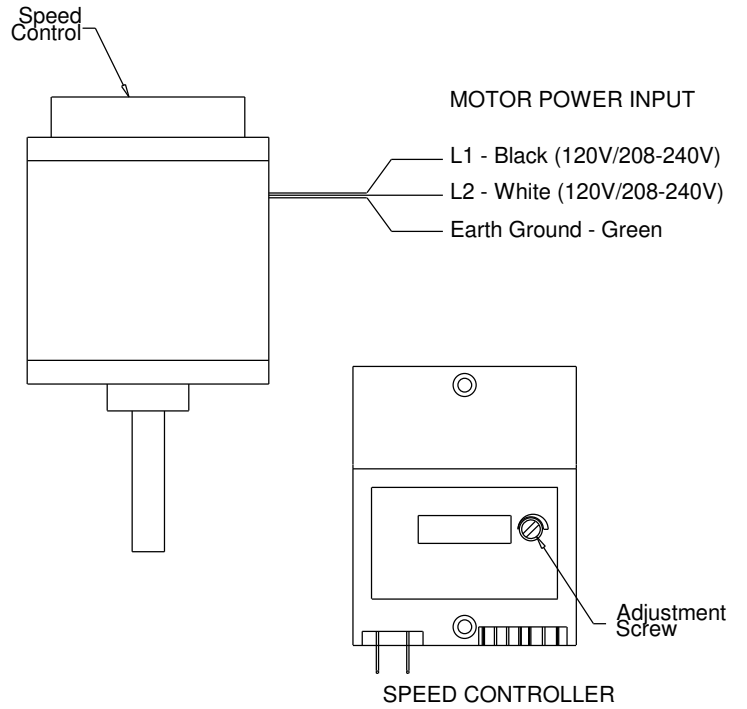
PROJECT: PLATTE CITY ASC NUEHEALTH

DATE: 5/27/2025

Speed Control

Internal Speed Control Electronically Commutated (EC) Motor Type N

STANDARD CONSTRUCTION FEATURES:
Some motors come with a factory programmed maximum RPM for specific applicaitons - Integral potentiometer with slotted screw for speed adjustment.



Dimensions (inches)

Mark	Qty	Description
EF-5	1	OPEN -1/2HP - 115V/1 PH/ 60 1725/0000 -EC