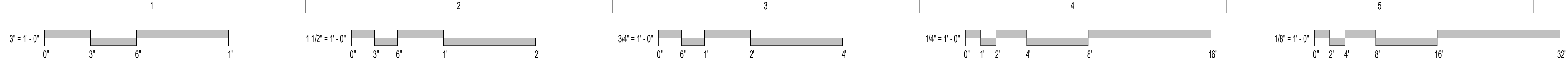


50' RADIUS FOR DISTANCE FROM MEDICAL VACUUM EXHAUST TO MECHANICAL INTAKES

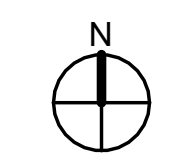
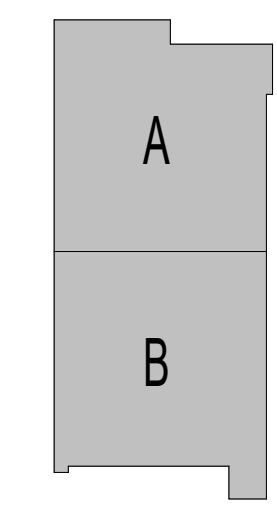
A1 MECHANICAL AND ELECTRICAL ROOF PLAN - T.I.
3/32" = 1'-0"



* REFERENCE 'G' SERIES FOR GENERAL NOTES AND ADDITIONAL INFORMATION.

- LIGHTNING PROTECTION GENERAL NOTE:**
- FURNISH AND INSTALL A DESIGN-BUILD LIGHTNING PROTECTION SYSTEM FOR THE ENTIRE BUILDING. REFER TO PERFORMANCE SPECIFICATION SECTION 264113.
- POWER GENERAL NOTE:**
- REFER TO SHEET 2E2-110 FOR TYPICAL POWER GENERAL NOTES APPLICABLE TO THE ENTIRE PROJECT.
- ELECTRICAL PLAN NOTES:**
- RECEPTACLE PROVIDED WITH ROOFTOP UNIT BUT FIELD WIRED TO CIRCUIT SHOWN.
 - EXTERIOR PHOTOCELL FOR CONTROL OF RELAY PANEL LIGHTING. EXTEND CABLING TO RELAY PANEL AS REQUIRED. MOUNT PHOTOCELL ON PARAPET WALL FACING NORTH.
- MECHANICAL PLAN NOTES:**
- 3" MEDICAL VACUUM EXHAUST.
 - 1-1/2" MEDICAL AIR INTAKE.
 - TERMINATE CONDENSATE DRAIN OVER ROOF DRAIN.

KEY PLAN



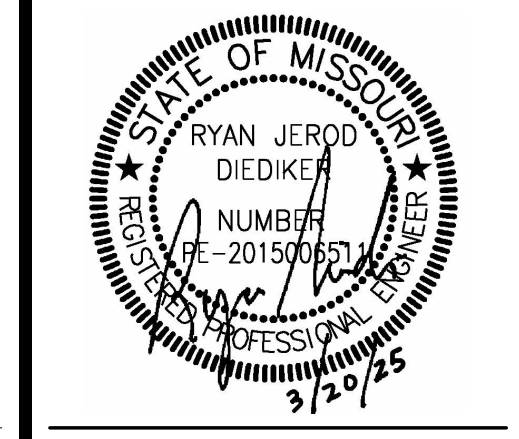
PLATTE CITY ASC
NUEHEALTH
PACKAGE 2 TI CONSTRUCTION DOCUMENTS
1101 KENTUCKY AVENUE
PLATTE CITY, MO 64079
STATE NO. 4837860
KDSH 12345

ISSUE DATE:	03/20/2025
PROJECT #:	24158
REVISION	DATE
4 ADDENDUM #4	04/04/25

2ME2-210
OVERALL MECHANICAL & ELECTRICAL ROOF PLAN

smith & boucher
engineers
25618 west 103rd St. olathe, ks 66061
phone 913.345.2127 fax 913.345.0617
project number 2424300 P2

nueHealth
A valueHealth Company



PULSE+ DESIGN GROUP
422 Pennsylvania Ave., Suite 1050
Kansas City, MO 64112
pulse+designgroup.com
Ph: (813) 438-9095
Fax: (813) 438-2680

FAN SCHEDULE						
DESIGNATION	EF-1	EF-2	EF-3	EF-4	EF-5	
FAN TYPE	DOWNBLAST	DOWNBLAST	DOWNBLAST	DOWNBLAST	DOWNBLAST	
SERVICE	RESTROOM	LOCKER	SOILED	MED GAS	SPD	
MANUFACTURER	GREENHECK	GREENHECK	GREENHECK	GREENHECK	GREENHECK	
MODEL	G-090-VG	G-090-VG	G-070-VG	G-090-VG	G-120-VG	
UNIT DATA	CFM	625	525	125	500	1200
	STATIC PRESSURE	0.5	0.5	0.3	0.3	0.5
	FAN RPM	1602	1636	1349	1399	1271
	BRAKE HORSEPOWER	0.08	0.08	0.01	0.05	0.19
	MOTOR HORSEPOWER	1/10	1/10	1/15	1/10	1/2
	VOLTAGE/PHASE	120/1	120/1	120/1	120/1	120/1
DRIVE	VARIGREEN	VARIGREEN	VARIGREEN	VARIGREEN	VARIGREEN	
ELEC. CTRL. DATA	PANEL & CIRCUIT	QP-33	QP-35	QP-37	QP-39	QP-41
	WIRE & CONDUIT	(2)#12, #12G., 1/2" C.	(2)#12, #12G., 1/2" C.	(2)#12, #12G., 1/2" C.	(2)#12, #12G., 1/2" C.	(2)#12, #12G., 1/2" C.
	OVERCURRENT DEVICE	15A/1P CB	15A/1P CB	15A/1P CB	15A/1P CB	20A/1P CB
	DISCONNECT	30A/NF NEMA-3R	30A/NF NEMA-3R	30A/NF NEMA-3R	30A/NF NEMA-3R	30A/NF NEMA-3R
	COMBINATION STARTER	YES, NEMA 00	YES, NEMA 00	YES, NEMA 00	YES, NEMA 00	YES, NEMA 00
	CONTROL	RE: DWGS	RE: DWGS	RE: DWGS	RE: DWGS	RE: DWGS
REFERENCE DRAWING/DETAIL	2ME2-210	2ME2-210	2ME2-210	2ME2-210	2ME2-210	
REMARKS	1	1	1	1	1	

NOTES:
1: FURNISH WITH FAN SPEED CONTROLLER.

GRILLE, REGISTER & DIFFUSER SCHEDULE							
PLAN MARK	MANUFACTURER MODEL NUMBER	SERVICE	MOUNT TYPE	VOLUME DAMPER	MATERIAL	COLOR	NOTES
SD-1	PRICE SPD	SUPPLY	SURFACE/LAY-IN	YES	STEEL	WHITE	3
SD-2	PRICE SDS100 2-SLOTS	SUPPLY	NOTE 2	YES	ALUMINUM	NOTE 7	1,2,3,6
SD-3	PRICE 510	SUPPLY	DUCT	YES	STEEL	WHITE	3
SD-4	PRICE LFD	SUPPLY	SURFACE	YES	ALUMINUM	WHITE	3
RG-1	PRICE 530	RETURN	SURFACE/LAY-IN	NO	STEEL	WHITE	3,8
RG-2	PRICE 530	RETURN	SURFACE	NO	STEEL	WHITE	3
RG-2	PRICE SDR100 2-SLOTS	RETURN	NOTE 2	NO	ALUMINUM	NOTE 7	3,4
EG-1	PRICE 530	EXHAUST	SURFACE	YES	STEEL	WHITE	3

- NOTES:
1: FURNISH WITH PRICE SDB PLENUM.
2: FURNISH WITH BORDER WITH FLANGE AND CONCEALED MOUNTING.
3: REFER TO PLANS FOR SIZES.
4: FURNISH WITH INSULATED RETURN HOOD/LIGHT SHIELD.
5: FURNISH WITH BORDER FOR SPIRAL DUCT MOUNT.
6: ADJUST DEFLECTOR FOR HORIZONTAL FLOW.
7: FRAME COLOR TO MATCH ADJACENT SURFACE.
8: FURNISH WITH SQUARE TO ROUND ADAPTER.

PIPE INSULATION SCHEDULE - PLUMBING		
SERVICE	PIPE SIZE	INSULATION
DOMESTIC COLD WATER	1/2" - 1-1/4"	1/2" FIBERGLASS, ASJ
	1-1/2" AND LARGER	1" FIBERGLASS, ASJ
DOMESTIC HOT WATER	1/2" - 1-1/4"	1" FIBERGLASS, ASJ
RECIRCULATING HOT WATER	1-1/2" AND LARGER	1-1/2" FIBERGLASS, ASJ
ROOF DRAIN BODIES	ALL	1" FIBERGLASS, ASJ
STORM AND STORM OVERFLOW PIPING		
EXPOSED FIXTURE WASTETRAPS AND DOMESTIC HOT WATER AT HANDICAPPED ACCESSIBLE SINKS AND LAVATORIES	ALL	TRUBRO LAV AGUARD MOLDED PROTECTIVE PIPE COVER OVER 1/2" FIBERGLASS INSULATION

NOTE: FOR ALL PIPING 2-1/2" AND LARGER, PROVIDE RIGID FOAM INSERTS AT ALL HANGERS AND SUPPORT LOCATIONS.

PIPE INSULATION SCHEDULE - HVAC		
SERVICE	PIPE SIZE	INSULATION
CONDENSATE DRAIN	1/2" - 2"	1/2" FIBERGLASS, ASJ
	2-1/2" AND LARGER	1" FIBERGLASS, ASJ
HEATING HOT WATER SUPPLY AND RETURN	1-1/4" AND SMALLER	1-1/2" FIBERGLASS, ASJ
	1-1/2" AND LARGER	2" FIBERGLASS ASJ

- NOTES:
1: FOR ALL PIPING 2-1/2" AND LARGER, PROVIDE RIGID FOAM INSERTS AT ALL HANGERS AND SUPPORT LOCATIONS.
2: FOR ALL EXPOSED PIPING IN OFFICE COMMONS AREAS PROVIDE PAINTABLE PVC JACKET. (EXCLUDES MECHANICAL ROOMS)

HOT WATER BOILER		
DESIGNATION	B-1	B-2
LOCATION	MECH ROOM	MECH ROOM
WEIGHT (LBS)	674	674
UNIT DATA	MANUFACTURER	FULTON
	MODEL	EXE-399
	TYPE	CONDENSING
	WATER FLOW (GPM)	50
	MINIMUM WATER FLOW (GPM)	16
	WATER PRESSURE DROP (FT)	4.6
OPERATING PRESSURE (PSI)	160	
BURNER	TYPE OF FUEL	NATURAL GAS
	TYPE OF BURNER	STAINLESS STEEL
	INPUT (MBH)	399
	OUTPUT @ 120°F EWT (MBH)	391
	TURNDOWN	8:1
	AHRI EFFICIENCY	98.0%
ELEC. CTRL. DATA	MAXIMUM INLET PRESSURE (IN.W.C.)	14
	MINIMUM INLET PRESSURE (IN.W.C.)	4
	GAS TRAIN	FM COMPLIANT
	VOLTS/PHASE	120/1
	MCA	10
	PANEL & CIRCUIT	QP-20
WIRE & CONDUIT	(2)#12, #12G., 1/2" C.	
OVERCURRENT DEVICE	20A/1P CB (ST)	
DISCONNECT	30A/NF	
CONTROL	NOTE 1	
REFERENCE DRAWING/DETAIL	2M2-120	
REMARKS	2, 3	

- NOTES:
1: PROVIDE WITH INTEGRAL BOILER CONTROL PANEL FOR CASCADING CONTROL AND BACNET INTERFACE.
2: FURNISH WITH ALL ACCESSORIES REQUIRED FOR EMERGENCY REMOTE SHUTDOWN.
3: FURNISH AND INSTALL CONDENSATE NEUTRALIZATION KIT.

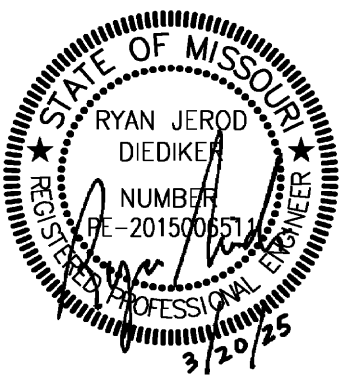
GAS FIRED HUMIDIFIER SCHEDULE		
DESIGNATION	H-1	
LOCATION	ROOF	
UNIT DATA	MANUFACTURER	CONDAIR
	MODEL NO.	GS 100-CS OC
	GAS INPUT (MBH)	124
	CAPACITY (LBS/HR)	82.5
	E.A.T. DB/RH (%F/%)	55/43
	L.A.T. DB/RH (%F/%)	55/68
	TYPE OF CONTROL	MODULATING
	WATER TYPE	POTABLE
	SYSTEM PRESSURE (PSIG)	ATMOSPHERIC
	DISPERSION TUBE LOCATION	IN-DUCT
MANIFOLD	HEATING AIRFLOW (CFM)	8,200
	MAX AIR VELOCITY (FPM)	1500
	VOLT/PHASE	120/1
	MCA	19.0
	MOCP	25
	PANEL & CIRCUIT	QP-31
	WIRE & CONDUIT	(2)#10, #10G., 1/2" C.
	OVERCURRENT DEVICE	25A/1P CB
	DISCONNECT	30A/NF NEMA-3R
	CONTROL SEQUENCE	RE: DWGS
REFERENCE DRAWING/DETAIL	2ME2-210	
REMARKS	1, 2, 3, 4, 5	

- NOTES:
1: FURNISH UNIT WITH 0-10 VOLT CONTACTS FOR MODULATING SIGNAL CONTROL BY BMS.
2: FURNISH UNIT WITH STEAM CONTROL VALVE AND STAINLESS STEEL PIPING.
3: PROVIDE BACNET CONTROL INTERFACE AS REQUIRED BY CONTROLS CONTRACTOR.
4: PROVIDE DRANE-KOOLER (CONDENSATE COOLER) FOR CONDENSATE AT STEAM GENERATOR AND CONDENSATE AT RTU. REFER TO FLOOR PLANS FOR LOCATIONS OF DRANE-KOOLERS.
5: PROVIDE 18" ROOF CURB FOR MOUNTING UNIT.

ROOFTOP UNIT SCHEDULE			
DESIGNATION	RTU-1	RTU-2	
UNIT DATA	MANUFACTURER	DAIKIN	
	MODEL NO.	DPSC25B	
	LOCATION	ROOF	
	AREA SERVED	NON-STERILE	
	WEIGHT - INCLUDING CURB (LBS)	4,700	
	UNIT SUPPLY AIR (MAX DESIGN CFM)	6,800	
	UNIT SUPPLY AIR (MIN CFM)	4,250	
	UNIT OUTSIDE AIRFLOW (CFM)	1,400	
	NOMINAL TONS	25	
	DESIGN OA CONDITIONS - COOLING (DB/WB)	95.6 / 76.7	
FILTER	DESIGN OA CONDITIONS - HEATING (DB)	2.0	
	AMBIENT ROOF TEMPERATURE (DB)	105	
	TYPE	2" PLEATED	
	MERV RATING	MERV 8	
	TYPE	4" PLEATED	
	MERV RATING	MERV 13	
	EXHAUST FAN	TOTAL AIRFLOW (CFM)	6,800
		EXTERNAL STATIC PRESSURE (IN. W.C.)	0.5
		QUANTITY	2
		FAN SPEED (RPM)	990
BRAKE HORSEPOWER (EACH)		1.84	
MOTOR HORSEPOWER (EACH)		1.5	
DRIVE		DIRECT W/ VFD	
NATURAL GAS FURNACE		ENT. AIR (DB)	60.5
		LVG. AIR (DB)	90
		HEATING CAPACITY - INPUT (MBH)	300
	HEATING CAPACITY - OUTPUT (MBH)	243	
	STAGES	12:1 MODULATING	
	DX COOLING COIL	TOTAL NET COOLING CAPACITY (MBH)	264.3
		SENSIBLE COOLING CAPACITY (MBH)	190.7
		COOLING COIL ENT. AIR (DB/WB)	79.2 / 65.9
		COOLING COIL LVG. AIR (DB/WB)	52 / 52
		UNIT LVG. AIR (DB/WB)	55 / 53
NUMBER OF COMPRESSORS		2	
STAGES		MODULATING	
COMPRESSOR TYPE		SCROLL	
REFRIGERANT		R32	
EER / IEER @ AHRI		10.5 / 20	
SUPPLY FAN	MAX AIRFLOW (CFM)	6,800	
	EXTERNAL STATIC PRESSURE (IN. W.C.)	2.5	
	TOTAL STATIC PRESSURE (IN. W.C.)	3.6	
	QUANTITY	1	
	FAN SPEED (RPM)	1486	
	BRAKE HORSEPOWER (EACH)	5.97	
	MOTOR HORSEPOWER (EACH)	7.5	
	DRIVE	DIRECT W/ VFD	
	UNIT ELEC. DATA	VOLTAGE/ PHASE	208/3
		MCA	97.9
MOCP		125	
PANEL & CIRCUIT		NDP-13,15,17	
WIRE & CONDUIT		(3)#1, #6G., 1-1/2" C. (CU)	
OVERCURRENT DEVICE		125A/3P CB	
DISCONNECTS		INTEGRAL (42 KAIC)	
VOLTAGE/ PHASE		208/3	
MCA		50.4	
MOCP		70	
RECEPT. CIRCUIT	PANEL & CIRCUIT	QP-1,3,5	
	WIRE & CONDUIT	(3)#4, #10G., 1-1/4" C. (CU)	
	OVERCURRENT DEVICE	70A/3P CB	
	DISCONNECTS	INTEGRAL (42 KAIC)	
	VOLTAGE/ PHASE	120/1	
	PANEL & CIRCUIT	SEE ROOF PLAN	
	WIRE & CONDUIT	(2)#12, #12G., 1/2" C.	
	OVERCURRENT DEVICE	20A/1P CB	
	CONTROL	BMS	
	REFERENCE DRAWING/DETAIL	2ME2-210	
REMARKS	1,2,3,4,5,6		

- NOTES:
1: PROVIDE UNIT WITH ENTHALPY ECONOMIZER AND OA DAMPER WITH MEASUREMENT AND CONTROL.
2: FIRE ALARM CONTRACTOR TO FURNISH AND INSTALL SMOKE DETECTOR IN RETURN AIR INLET. CONNECT FIRE ALARM SYSTEM. WIRE TO SHUT DOWN UNIT AND SIGNAL BMS UPON SENSING SMOKE.
3: PROVIDE STAINLESS STEEL DRAIN PAN IN COOLING COIL SECTION.
4: UNIT TOTAL STATIC PRESSURE TO INCLUDE DIRTY FILTERS AND PRESSURE LOSS DUE TO UNIT OPENINGS.
5: UNIT SHALL BE PROVIDED WITH MULTI-POINT POWER CONNECTION. ONE CIRCUIT FOR COMPRESSORS AND CONDENSER FANS. ONE CIRCUIT FOR CONTROLS, SUPPLY FAN, EXHAUST FAN, AND HEATER. ONE CIRCUIT FOR RECEPTACLE.
6: PROVIDE 14" ROOF CURB. REFER TO CURB DETAIL FOR CURB INFILL MATERIAL.
7: PROVIDE 36" ROOF CURB WITH HEPA FILTERS IN ROOF CURB. REFER TO CURB DETAIL FOR CURB INFILL MATERIAL.
8: PROVIDE UV LIGHTS FOR COVERAGE OF COOLING COILS, CONDENSATE DRAIN PAN, AND OTHER DEVICES WITH WETTED SURFACES.

PULSE DESIGN GROUP
4627 Pennsylvania Ave., Suite 1050
Kansas City, MO 64112
Ph: (816) 438-9095
Fax: (816) 438-2680
pulse@designgroup.com



smith & boucher engineers
25618 west 103rd St. Olathe, KS 66061
phone 913.345.2127 fax 913.345.0617
project number 2424300 P1

nueHealth
A valueHealth Company

PLATTE CITY ASC
NUEHEALTH
PACKAGE 2 TI CONSTRUCTION DOCUMENTS
1101 KENTUCKY AVENUE
PLATTE CITY, MO 64099
STATE NO. 4637650
KCS# 12345

ISSUE DATE: 03/20/2025
PROJECT #: 24158

REVISION	DATE
4	04/04/25

2ME2-300
MECHANICAL AND ELECTRICAL SCHEDULES

COPYRIGHT © 2023, PULSE DESIGN GROUP, INC. ALL RIGHTS RESERVED. NOTE: IF THIS DRAWING IS LESS THAN 24" X 36", IT IS A REDUCED SIZED DRAWING. DO NOT SCALE DRAWINGS



PROJECT NAME: 2314708 Liberty SD 2023 Heritage MS Renovations
AUTOCAD FILE LOCATION: \NAME:
LAST CORRECTION BY: DATE: TIME:
PLOTTED BY: DATE: TIME:
Jiangenfeld Friday, April 4, 2025 11:17:31 AM
Prasanta Patra Friday, April 4, 2025 11:49:05 AM

HVAC PUMP SCHEDULE			
DESIGNATION	HWCP-1	HWCP-2	
UNIT DATA			
MANUFACTURER	ARMSTRONG	ARMSTRONG	
LOCATION	MECH ROOM	MECH ROOM	
MODEL NO.	4360-1.5D-4p	4360-1.5d-4P	
SERVICE	HOT WATER	HOT WATER	
PUMP TYPE	VERT. INLINE	VERT. INLINE	
GPM	35	35	
PUMP HEAD (FT.)	50	50	
EFFICIENCY (%)	46.4	46.4	
BRAKE HORSEPOWER	0.95	0.95	
MOTOR HORSEPOWER	1.5	1.5	
MOTOR RPM	1800	1800	
ELEC./CONTROL DATA			
VOLTAGE/PHASE	208/3	208/3	
PANEL & CIRCUIT	QP-19,21,23	QP-25,27,29	
WIRE & CONDUIT	(3)#12, #12G., 1/2" C.	(3)#12, #12G., 1/2" C.	
OVERCURRENT DEVICE	15A/3P CB	15A/3P CB	
DISCONNECT	---	---	
STARTER	---	---	
COMBINATION STARTER	VFD (INTEGRAL D/S)	VFD (INTEGRAL D/S)	
CONTROL	RE: DWGS	RE: DWGS	
REFERENCE DRAWING/DETAIL	2M2-120	2M2-120	
REMARKS	1	1	

NOTES:
1: PROVIDE PUMP WITH SHAFT GROUNDING RINGS.

PLUMBING FIXTURE SCHEDULE									
MARK	MANUFACTURER/ MODEL	DESCRIPTION	MANUFACTURER/ MODEL	FITTINGS DESCRIPTION	REMARKS	PIPING CONNECTIONS			
						CW	HW	SAN	VENT
WC-1	AMERICAN STANDARD MADERA 3461.001	ADA COMPLIANT WATER CLOSET: WHITE VITREOUS CHINA, ELONGATED BOWL, FLOOR MOUNT FLUSH VALVE BOWL WITH TOP SPUD AND BOLT COVERS, 1.28 GALLON SIPHON JET FLUSH ACTION.	SLOAN ROYAL 111-1.28	MANUAL ACTIVATED, ADA COMPLIANT EXPOSED WATER CLOSET SINGLE FLUSH VALVE, 1.28 GPF, CHROME PLATED, FLUSH OVERRIDE BUTTON, VACUUM BREAKER FLUSH CONNECTION AND SPUD COUPLING FOR 1 1/2" TOP SPUD.	---	1-1/4"	---	4"	2"
	CHURCH 9500C	SEAT: SOLID PLASTIC, OPEN FRONT, WHITE, ELONGATED BOWL, INTEGRATED BUMPERS, EXTERNAL CHECK HINGES WITH STAINLESS STEEL POSTS.		PROVIDE SPUD FLANGES					
NOT USED	---	---	---	---	---	---	---	---	---
L-1	KOHLER CHESAPEAKE K-1728	ADA COMPLIANT WALL HUNG LAVATORY: VITREOUS CHINA, 19-1/4" X 17-1/4" (BOWL 14" X 11" X 4-7/16"), FRONT OVERFLOW, 4" CENTER FAUCET HOLES	CHICAGO FAUCETS 895-317E73-RGD2AB	MANUAL DECK MOUNTED FAUCET, BRASS CONSTRUCTION, 4" CENTERS, 4" WRISTBLAD HANDLE, 5-1/4" RIGID GOOSENECK SPOUT, CERAMIC CARTRIDGE, POLISHED CHROME, 1.0 GPM VANDAL RESISTANT NON-AERATING LAMINAR FLOW.	1,2,3	1/2"	1/2"	2"	1-1/2"
NOT USED	WADE	PROVIDE CONCEALED HEAVY DUTY CARRIER		THERMOSTATIC MIXING VALVE					
L-3	KOHLER CHESAPEAKE K-1728	ADA COMPLIANT WALL HUNG LAVATORY: VITREOUS CHINA, 19-1/4" X 17-1/4" (BOWL 14" X 11" X 4-7/16"), FRONT OVERFLOW, 4" CENTER FAUCET HOLES	SPEAKMAN SEF-1800	MANUAL DECK MOUNTED FAUCET, BRASS CONSTRUCTION, 8" CENTERS, 4" WRISTBLAD HANDLE, 5-1/2" RIGID GOOSENECK SPOUT, CERAMIC CARTRIDGE, POLISHED CHROME, 1.2 GPM VANDAL RESISTANT NON-AERATING LAMINAR FLOW, INTEGRATED EYEWASH WITH SINGLE LEVER ACTIVATION AND INDEPENDENT WATER CHANNEL.	1,2,3	1/2"	1/2"	2"	1-1/2"
S-1	ELKAY ELUHAD161655	ADA COMPLIANT STAINLESS STEEL SINK, UNDERMOUNT SINGLE BOWL, 16"X16"X5-3/8" DEEP BOWL, REAR CENTER DRAIN, SOUND DEADENING PADS.	CHICAGO FAUCETS 895-317E73-RGD2AB	MANUAL DECK MOUNTED FAUCET, BRASS CONSTRUCTION, 4" CENTERS, 4" WRISTBLADE HANDLES, 5-1/4" RIGID GOOSENECK SPOUT, CERAMIC CARTRIDGE, POLISHED CHROME, 1.0 GPM VANDAL RESISTANT NON-AERATING LAMINAR FLOW.	1,2	1/2"	1/2"	2"	1-1/2"
S-2	ELKAY ELUH1618	STAINLESS STEEL SINK, UNDERMOUNT SINGLE BOWL, 16"X18"X9-1/2" DEEP BOWL, REAR CENTER DRAIN, SOUND DEADENING PADS.	CHICAGO FAUCETS 895-317E73-RGD2AB	MANUAL DECK MOUNTED FAUCET, BRASS CONSTRUCTION, 4" CENTERS, 4" WRISTBLADE HANDLES, 5-1/4" RIGID GOOSENECK SPOUT, CERAMIC CARTRIDGE, POLISHED CHROME, 1.0 GPM VANDAL RESISTANT NON-AERATING LAMINAR FLOW.	1,2	1/2"	1/2"	2"	1-1/2"
S-3	AMERICAN STANDARD 9512999.020	CLINIC SERVICE SINK: WALL HUNG, WHITE VITREOUS CHINA, FLUSHING RIM, 1-1/2" TOP SPUD.	SLOAN ROYAL BPW 1000-1.28	BEDPAN WASHER KIT: BEDPAN WASHER, STRAIGHT DOWN TUBE, 1.28 GPF PISTON-OPERATED MANUAL FLUSH VALVE.	1,2	1-1/4"	1/2"	4"	2"
			AMERICAN STANDARD 8345.115	UTILITY FAUCET: WALL MOUNT, EXPOSED YOKE, BOTTOM FORK BRACE, WRIST BLADE HANDLES.					
SH-1	COMFORT DESIGNS XST 3838 TR. 75	ADA COMPLIANT SHOWER ENCLOSURE: 36"x36", MOLDED REINFORCED FIBERGLASS, SLIP RESISTANT PAN SURFACE, GRAB BARS, FOLD UP SEAT, MOLDED LEDGE, 3-PIECE.	SYMMONS 9605-PLR	ADA COMPLIANT SHOWER/HAND SHOWER TRIM: PRESSURE BALANCING SHOWER VALVE, DUAL OUTLET DIVERTER VALVE, METAL LEVER HANDLES, ADA GRAB BAR, 60" FLEXIBLE METAL HOSE, HAND SHOWER, SHOWERHEAD, 2.0 GPM.	---	1/2"	1/2"	2"	1-1/2"
EDF-1	ELKAY LZSTL8WSLK	ADA COMPLIANT DRINKING FOUNTAIN: WALL-MOUNTED, BI-LEVEL, FILTERED, ELECTRONIC FRONT AND SIDE PUSHBAR BUBBLER ACTIVATION, LAMINAR FLOW, VISUAL FILTER MONITOR, GREEN TICKER, 8.0 GPH 50°F CHILLED WATER AT 80°F INLET AND 90°F AMBIENT.			---	1/2"	1/2"	2"	1-1/2"
JS-1	STERN-WILLIAMS HL-2100	36"X24"X12" TERRAZO SERVICE RECEPTOR, 6" THRESHOLD DRO WITH STAINLESS STEEL CAP, INTEGRAL BRASS DRAIN WITH STAINLESS STEEL STRAINER.	AMERICAN STANDARD 8344.212	EXPOSED YOKE WALL-MOUNT UTILITY FAUCET WITH TOP BRACE. CAST BRASS BODY WITH METAL LEVER HANDLES, CERAMIC DISC VALVE CARTRIDGES, VACUUM BREAKER, BUTTON HOOK, AND THREADED HOSE END.	---	1/2"	1/2"	3"	1-1/2"
IMB-1	GUY GRAY MIB	ICE MAKER CONNECTION BOX, WHITE POWDER COATED STEEL BOX AND FRAME.			---	1/2"	---	---	---
HB-1	JAY R. SMITH 5673	HOSE BIB: EXPOSED, ANTI-SIPHON, EXTERNAL VACUUM BREAKER WITH 3/4" HOSE CONNECTIONS.			---	3/4"	---	---	---
WH-1	JAY R. SMITH 5509QT	NON-FREEZE WALL HYDRANT WITH ANTI-SIPHON BACKFLOW PREVENTER ENCLOSED IN FLUSH MOUNTED WALL BOX.			---	3/4"	---	---	---
RH-1	JAY R. SMITH 5903	DRAINLESS NON-FREEZE ROOF HYDRANT WITH GALVANIZED CASING AND ADJUSTABLE FLOW WHEEL LOCK HANDLE WITH DECK FLANGE AND UNDER DECK CLAMP. PROVIDE WITH VACUUM BREAKER.			---	3/4"	---	---	---

NOTES:
1: PROVIDE CHROME PLATED BRASS TAILPIECE AND GRID DRAIN.
2: PROVIDE LOOSE KEY STOPS AND FLEXIBLE RISERS.
3: INSULATE EXPOSED TAILPIECE, P-TRAP, AND WATER RISERS. REFER TO SPECS FOR INSULATION METHODS.

DRAIN SCHEDULE		
MARK	MANUFACTURER/ MODEL	DESCRIPTION
FD-1	ZURN Z415B	CAST IRON FLOOR DRAIN WITH 6" POLISHED NICKEL BRONZE STRAINER, ADJUSTABLE, BOTTOM OUTLET. PROVIDE WITH SURSEAL TRAP GUARD.
FD-2	ZURN Z610	CAST IRON FLOOR SINK, 12-1/2" SQUARE, SEDIMENT BUCKET. PROVIDE WITH SURSEAL TRAP GUARD.
FS-1	ZURN Z1900	12"x12"x6" CAST IRON FLOOR SINK, ACID-RESISTANT COATING, ABS INTERIOR DOME STRAINER, 1/2 GRATE. PROVIDE WITH SURSEAL TRAP GUARD.
RD-1	ZURN Z125-C-E	CAST IRON ROOF DRAIN WITH 8-3/8" CAST IRON DOME STRAINER, UNDERDECK CLAMP, 4" STATIC EXTENSION, BOTTOM OUTLET.
ORD-1	ZURN Z125-C-E-89	CAST IRON ROOF DRAIN WITH 8-3/8" CAST IRON DOME STRAINER, UNDERDECK CLAMP, 4" STATIC EXTENSION, 2" EXTERNAL WATER DAM, BOTTOM OUTLET.
DS-1	ZURN Z199-DC	STAINLESS STEEL DOWNSPOUT NOZZLE, PERFORATED HINGE, NO-HUB OUTLET AND FLANGE TO SECURE NOZZLE TO WALL.

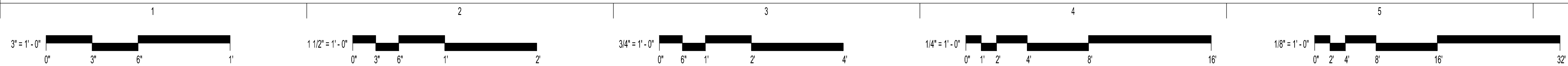
NOTES:
1: REFER TO PLANS FOR OUTLET SIZES

AIR COMPRESSOR SCHEDULE			
DESIGNATION	MAC-1	IAC-1	
UNIT			
MANUFACTURER	POWEREX	POWEREX	
MODEL	MSD03A3	IOPD0754XP5	
SERVICE	MEDICAL AIR	INSTRUMENT AIR	
TYPE	DUPLEX SCROLL	DUPLEX RECIPROCATING	
CONTROL	SINGLE STAGE	TWO STAGE	
MOTOR HP	3	7.5	
RECEIVER SIZE (GAL.)	80	120	
FULL LOAD PRESSURE (PSIG)	50	185	
CAPACITY @ FULL LOAD PRESSURE (SCFM)	9.5	20.4	
VOLTAGE/PHASE	208/3	208/3	
FLA	19.1	43	
PANEL & CIRCUIT	QP-8,10,12	QP-14,16,18	
WIRE & CONDUIT	(3)#10, #10G., 3/4" C.	(3)#4, #8G., 1-1/4" C.	
OVERCURRENT DEVICE	30A/3P CB	70A/3P CB	
DISCONNECT	30A/NF	100A/3P	
REFERENCE DRAWING/DETAIL	2MG1-120	2MG1-120	
REMARKS	1,2,3	1,2,3	

NOTES:
1: PROVIDE AS SKID MOUNTED AND FACTORY ASSEMBLED.
2: PROVIDE WITH SINGLE POINT ELECTRICAL CONNECTION.
3: PROVIDE WITH BMS INTEGRATION CARD.

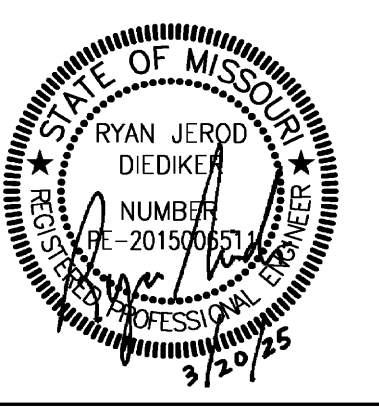
VACUUM PUMP SCHEDULE	
DESIGNATION	MVP-1
UNIT	
MANUFACTURER	POWEREX
MODEL	CVPD0504B
SERVICE	MEDICAL VACUUM
TYPE	DUPLEX CLAW
CONTROL	SINGLE STAGE
MOTOR HP	5
RECEIVER SIZE (GAL.)	120
FULL LOAD PRESSURE (IN HG)	19
CAPACITY @ FULL LOAD PRESSURE (SCFM)	38
VOLTAGE/PHASE	208/3
FLA	26.8
PANEL & CIRCUIT	QP-2,4,6
WIRE & CONDUIT	(3)#8, #10G., 3/4" C.
OVERCURRENT DEVICE	40A/3P CB
DISCONNECT	60A/NF
REFERENCE DRAWING/DETAIL	2MG1-120
REMARKS	1,2,3

NOTES:
1: PROVIDE AS SKID MOUNTED AND FACTORY ASSEMBLED.
2: PROVIDE WITH SINGLE POINT ELECTRICAL CONNECTION.
3: PROVIDE WITH BMS INTEGRATION CARD.



COPYRIGHT © 2023, PULSE DESIGN GROUP, INC. ALL RIGHTS RESERVED. NOTE: IF THIS DRAWING IS LESS THAN 24" X 36", IT IS A REDUCED SIZED DRAWING. DO NOT SCALE DRAWINGS

PULSE
DESIGN GROUP



smith & boucher
engineers

nueHealth
A valueHealth Company

PLATTE CITY ASC
NUEHEALTH
PACKAGE 2 TI CONSTRUCTION DOCUMENTS

ISSUE DATE: 03/20/2025
PROJECT #: 24158

REVISION
ADDENDUM #4

2ME2-302
MECHANICAL AND ELECTRICAL
SCHEDULES

PROJECT NAME: 2314708 Liberty SD 2023 Heritage MS Renovations
AUTOCAD FILE LOCATION: \\NAME:\
LAST CORRECTION BY: DATE
PLOTTED BY: DATE

DIGITAL MIXING VALVE	
DESIGNATION	DMV-1
MANUFACTURER	LEONARD
MODEL	PNV-100-LF
TYPE	DIGITAL
MIN GPM	1.00
PEAK DEMAND GPM	16
SYSTEM MAX PRESSURE DROP	10
OUTLET TEMP. (°F)	110
ELEC. VOLTAGE/PHASE	120/1
ELEC. TYPE	PLUG-IN
REFERENCE DRAWING/DETAIL	2P1-120
REMARKS	1.2

NOTES:
 1: FURNISH ON MANUFACTURED ASSEMBLY SYSTEM WITH PRE-PIPED CHECK VALVES AND BALL VALVES.
 2: FURNISH WITH BMS INTERFACE.

PLUMBING PUMP SCHEDULE						
DESIGNATION	HWCP-1	TP-1A	TP-1B	TP-2A	TP-2B	
LOCATION	MECH 155	MECH 155	MECH 155	MECH 181	MECH 181	
MANUFACTURER	BELL & GOSSETT	GRUNDFOS	GRUNDFOS	GRUNDFOS	GRUNDFOS	
MODEL NO.	NBF-36	CM 5-4	CM 5-4	CM 10-3	CM 10-3	
SERVICE	DOMESTIC HOT WATER	CRITICAL WATER	CRITICAL WATER	UTILITY WATER	UTILITY WATER	
PUMP TYPE	INLINE	INLINE	INLINE	INLINE	INLINE	
GPM	6	24.7	24.7	89.8	89.8	
PUMP HEAD (FT.)	35	145	145	127	127	
MOTOR HORSEPOWER	1/8	3	3	5	5	
VOLTAGE/PHASE	120/1	208/3	208/3	208/3	208/3	
PANEL & CIRCUIT	QP-49	QP-44,46,48	QP-50,52,54	QP-56,58,60	QP-62,64,66	
WIRE & CONDUIT	(2)#12, #12G., 1/2" C.	(3)#12, #12G., 1/2" C.	(3)#12, #12G., 1/2" C.	(3)#10, #10G., 3/4" C.	(3)#10, #10G., 3/4" C.	
OVERCURRENT DEVICE	15A/1P CB	20A/3P CB	20A/3P CB	40A/3P CB	40A/3P CB	
DISCONNECT	NOTE 1	30A/NF NEMA 3R	30A/NF NEMA 3R	30A/NF NEMA 3R	30A/NF NEMA 3R	
STARTER	NEMA 00	-	-	-	-	
COMBINATION STARTER	YES	-	-	-	-	
CONTROL	BMS	NOTE 2	NOTE 2	NOTE 2	NOTE 2	
REFERENCE DRAWING/DETAIL	2P1-120	2P2-100	2P2-100	2P2-100	2P2-100	
REMARKS	---	3	3	3	3	

NOTES:
 1: PROVIDE WITH MOTOR RATED TOGGLE SWITCH.
 2: CONTROLLED BY CONTROL PANEL PROVIDED BY WATER TREATMENT VENDOR.
 3: PROVIDE WITH STAINLESS STEEL CONSTRUCTION.

SPLIT SYSTEM A/C UNIT SCHEDULE		
INDOOR UNIT		
DESIGNATION	AC-1	AC-2
MANUFACTURER	TRANE	TRANE
MODEL	PKA-AK24NL	PEAD-AA24NL
SERVICE	IDF	ELECTRICAL
TYPE	WALL MOUNTED	DUCTED
CFM	775	740
TOTAL COOLING CAP (MBH)	24	21.2
VOLTAGE/PHASE	208/1	208/1
PANEL AND CIRCUIT	NOTE 1	NOTE 1
WIRE AND CONDUIT	(2)#12, #12G., 1/2" C.	(2)#12, #12G., 1/2" C.
OVERCURRENT DEVICE	NOTE 1	NOTE 1
DISCONNECT	NOTE 1	NOTE 1
CONTROLS	THERMOSTAT	THERMOSTAT
OUTDOOR UNIT		
DESIGNATION	ACCU-1	ACCU-2
MANUFACTURER	TRANE	TRANE
MODEL NO.	PUY-AH24NL	PUY-AH24NL
TOTAL COOLING CAP (MBH)	24	21.1
SEER2	21.1	19.6
REFRIGERANT	R454B	R454B
AMBIENT AIR TEMP (°F.)	95.0	95.0
VOLTAGE/PHASE	208/1	208/1
PANEL AND CIRCUIT	QP-28,30	QP-40,42
WIRE AND CONDUIT	(2)#10, #10G., 1/2" C.	(2)#10, #10G., 1/2" C.
MCA	22	22
MOCPP	37	37
OVERCURRENT DEVICE	35A/2P CB	35A/2P CB
DISCONNECT	30A/NF NEMA 3R	30A/NF NEMA 3R
REMARKS	1,2,3,4	1,2,3,4

NOTES:
 1: INDOOR UNIT CIRCUITED THROUGH OUTDOOR UNIT. PROVIDE MOTOR RATED TOGGLE SWITCH DISCONNECT ADJACENT TO INDOOR UNIT.
 2: PROVIDE UNIT WITH DIGITAL WALL THERMOSTAT
 3: PROVIDE UNIT WITH CONDENSATE PUMP AND DRAIN PAN LEVEL SENSOR.
 4: PROVIDE UNIT WITH LOW AMBIENT WIND BAFFLES.

MASTER ALARM PANEL SCHEDULE			
DESIGNATION	MAP-1	MAP-2	
UNIT MANUFACTURER	AMICO	AMICO	
MODEL	A2M-E-10	A2M-E-10	
VOLTAGE/PHASE	120/1	120/1	
PANEL & CIRCUIT	LP-7	LP-15	
WIRE & CONDUIT	(2)#12, #12G., 1/2" C.	(2)#12, #12G., 1/2" C.	
OVERCURRENT DEVICE	20A/1P CB	20A/1P CB	
REFERENCE DRAWING/DETAIL	2MG1-111	2MG1-120	
REMARKS	---	---	

AREA ALARM PANEL SCHEDULE			
DESIGNATION	AAP-1	AAP-2	AAP-3
UNIT MANUFACTURER	AMICO	AMICO	AMICO
MODEL	A2DRU-OV	A2DRU-OAV2WOAV2WI	A2DRU-OAV2WOAV2W
ASSOCIATED ZONE VALVE BOX	ZVB-1	ZVB-2A,ZVB-2B,ZVB-2C	ZVB-3A,ZVB-3B
VOLTAGE/PHASE	120/1	120/1	120/1
PANEL & CIRCUIT	LP-13	LP-13	LP-13
WIRE & CONDUIT	(2)#12, #12G., 1/2" C.	(2)#12, #12G., 1/2" C.	(2)#12, #12G., 1/2" C.
OVERCURRENT DEVICE	20A/1P CB	20A/1P CB	20A/1P CB
REFERENCE DRAWING/DETAIL	2MG1-111	2MG1-111	2MG1-111
REMARKS	---	---	---

UV DISINFECTION SCHEDULE	
DESIGNATION	UV-1
LOCATION	MECH 155
MANUFACTURER	AQUAFINE
MODEL	VL 410
SYSTEM CAPACITY (GPM)	18
LAMP POWER (W)	46
CHAMBER DIMENSIONS	23.5"x3.5"
VOLTS/PHASE	120/1
PANEL & CIRCUIT	QP-47
WIRE & CONDUIT	(2)#12, #12G., 1/2" C.
OVERCURRENT DEVICE	20A/1P CB
DISCONNECT	5-20R GFCI RECEPTACLE
REFERENCE DRAWING/DETAIL	2P2-100
REMARKS	1

NOTES:
 1: CONTROL BY CONTROL PANEL PROVIDED BY WATER TREATMENT PROVIDER.

WATER SOFTENER SCHEDULE	
DESIGNATION	WS-1
LOCATION	MECHANICAL ROOM
MANUFACTURER	TOTAL WATER
MODEL	MGTC-150-2
SYSTEM PEAK DEMAND (GPM)	112
SYSTEM CONTINUOUS DEMAND (GPM)	108
DAILY WATER USE (GPD)	1,300
MAX OPERATING PRESSURE (PSI)	125
SOFTENER TANK SIZE EACH (ø"XH")	18X65
BRINE TANK SIZE (ø"XH")	24X50
NORMAL PRESSURE DROP (PSI)	15
VOLTS/PHASE	120/1
PANEL & CIRCUIT	QP-55
WIRE & CONDUIT	(2)#12, #12G., 1/2" C.
OVERCURRENT DEVICE	20A/1P CB
DISCONNECT	5-20R GFCI RECEPTACLE
REFERENCE DRAWING/DETAIL	2P1-120
REMARKS	1

NOTES:
 1: SOFTENER IS A DUPLEX CONFIGURATION.

REVERSE OSMOSIS SCHEDULE		
DESIGNATION	RO-1	RO-2
LOCATION	MECH 155	MECH 181
MANUFACTURER	CULLIGAN	CULLIGAN
MODEL	G1-2L	G1-2F
SYSTEM CAPACITY (GPM)	0.6	2.4
SUPPLY WATER TYPE	SOFT	SOFT
TOTAL DISSOLVED SOLIDS (MG/L)	400	400
VOLTS/PHASE	120/1	120/1
PANEL & CIRCUIT	QP-51	QP-53
WIRE & CONDUIT	(2)#12, #12G., 1/2" C.	(2)#12, #12G., 1/2" C.
OVERCURRENT DEVICE	20A/1P CB	20A/1P CB
DISCONNECT	5-20R GFCI RECEPTACLE	5-20R GFCI RECEPTACLE
REFERENCE DRAWING/DETAIL	2P2-100	2P2-100
REMARKS	1	1

NOTES:
 1: CONTROL BY CONTROL PANEL PROVIDED BY WATER TREATMENT PROVIDER.

ZONE VALVE BOX SCHEDULE		
MARK	MANUFACTURER/ MODEL	DESCRIPTION
ZVB-1	AMICO ZIU-M23	DUAL BOX; ENGLISH (NFPA); 3/4", 1" ZONE SHUT-OFF; MONITORING
ZVB-2A	AMICO ZIU-M11144	QUINTUPLE BOX; ENGLISH (NFPA); 1/2", 1/2", 1/2", 1-1/4", 1-1/4" ZONE SHUT-OFF; MONITORING
ZVB-2B	AMICO ZIU-M11144	QUINTUPLE BOX; ENGLISH (NFPA); 1/2", 1/2", 1/2", 1-1/4", 1-1/4" ZONE SHUT-OFF; MONITORING
ZVB-2C	AMICO ZIU-M1	SINGLE BOX; ENGLISH (NFPA); 1/2" ZONE SHUT-OFF; MONITORING.
ZVB-3A	AMICO ZIU-M11144	QUINTUPLE BOX; ENGLISH (NFPA); 1/2", 1/2", 1/2", 1-1/4", 1-1/4" ZONE SHUT-OFF; MONITORING
ZVB-3B	AMICO ZIU-M11144	QUINTUPLE BOX; ENGLISH (NFPA); 1/2", 1/2", 1/2", 1-1/4", 1-1/4" ZONE SHUT-OFF; MONITORING

PULSE
 DESIGN GROUP

4627 Pennsylvania Ave., Suite 1050
 Kansas City, MO 64112
 pulse@pulsegroup.com

PH: (816) 438-2055
 FX: (816) 438-2050



smith & boucher
 engineers

25618 west 103rd St. Olathe, KS 66061
 phone 913.345.2127 fax 913.345.0617
 project number 2424300 P1

nueHealth
 A valueHealth Company

PLATTE CITY ASC
 NUEHEALTH
 PACKAGE 2 TI CONSTRUCTION DOCUMENTS

1101 KENTUCKY AVENUE
 PLATTE CITY, MO 64079

STATE NO. 4637650
 KCS# 12345

ISSUE DATE: 03/20/2025
 PROJECT #: 24158

REVISION 4
 ADDENDUM #4

DATE 04/04/25

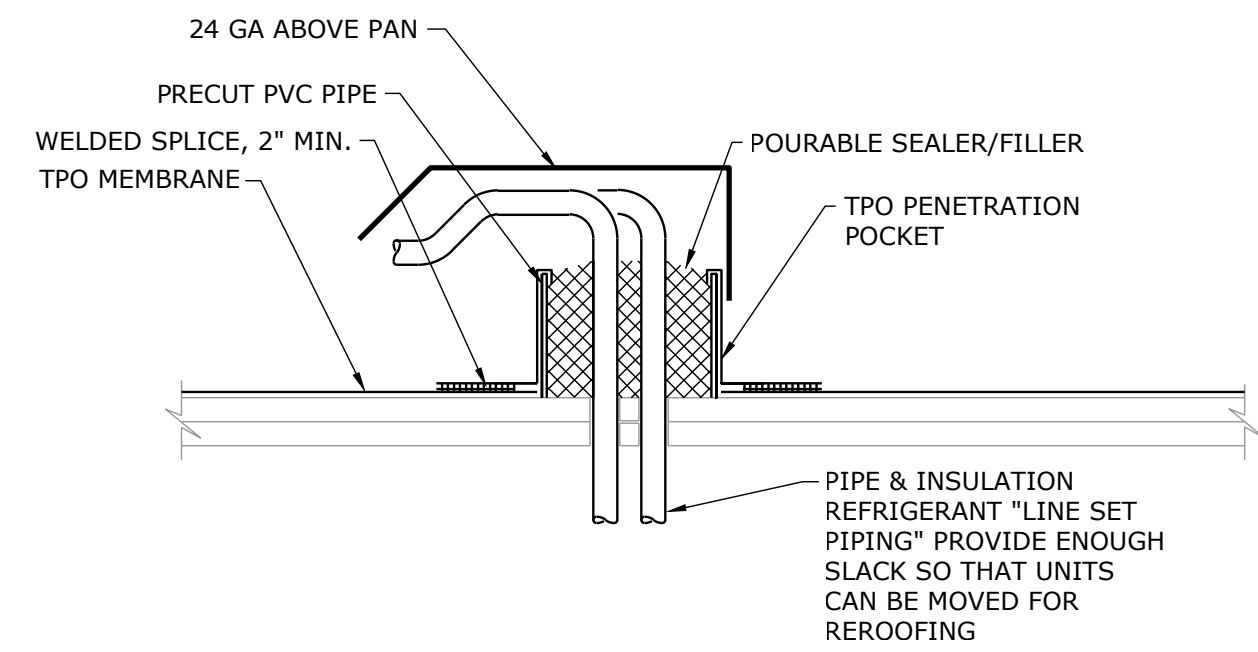
2ME2-303
 MECHANICAL AND ELECTRICAL
 SCHEDULES

COPYRIGHT © 2023, PULSE DESIGN GROUP, INC. ALL RIGHTS RESERVED. NOTE: IF THIS DRAWING IS LESS THAN 24" X 36", IT IS A REDUCED SIZED DRAWING. DO NOT SCALE DRAWINGS

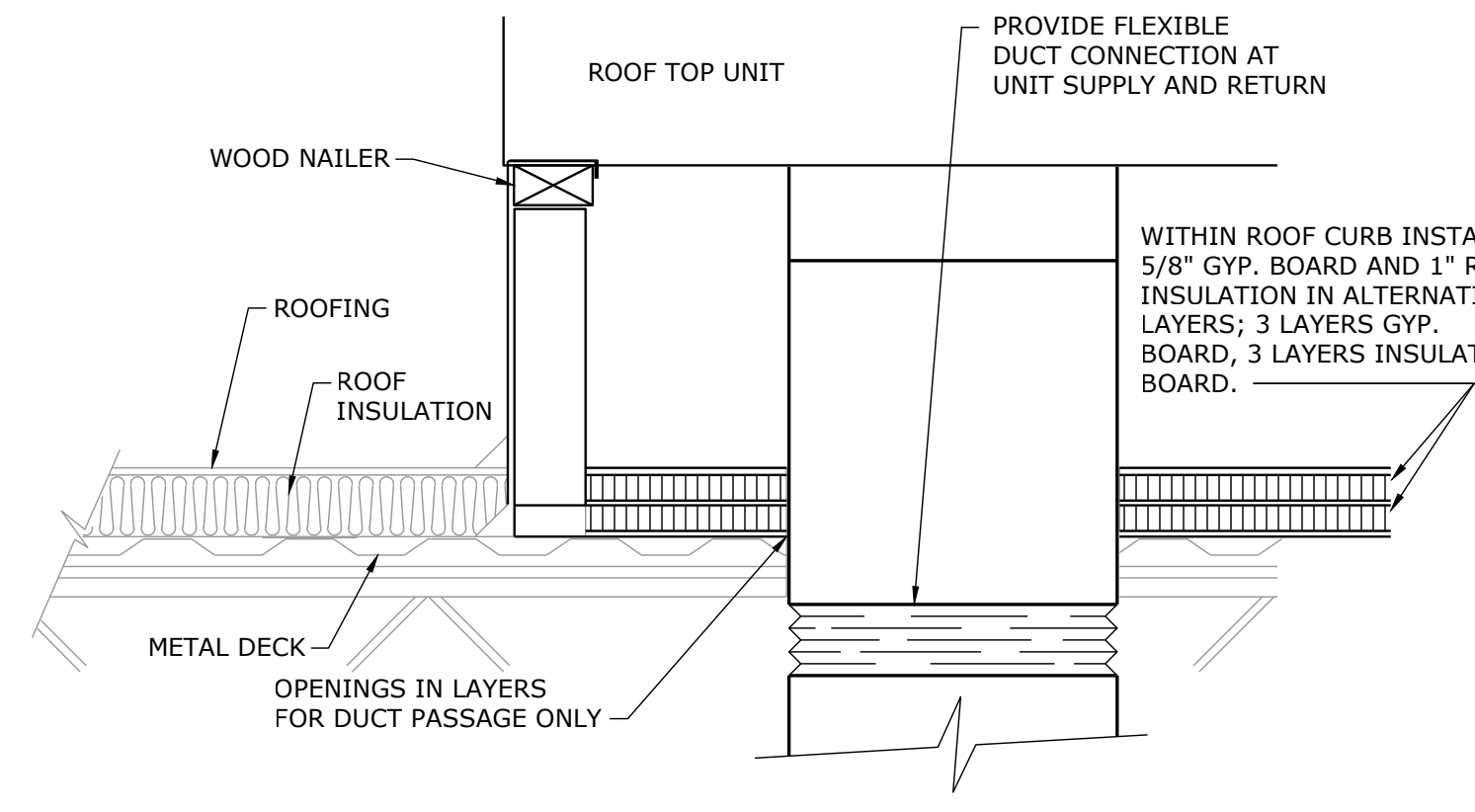
PROJECT NAME: 2314708 Liberty SD 2023 Heritage MS Renovations
 AUTOCAD FILE LOCATION: \\NAME: C:\Users\jason@pulse.com\Documents\2314708 Liberty SD\2314708-2023-303.dwg
 LAST CORRECTION BY: Jlangenfeld
 PLOTTED BY: Prasanta Patro

DATE: Friday, April 4, 2025 11:16:48 AM
 TIME: Friday, April 4, 2025 11:45:48 AM

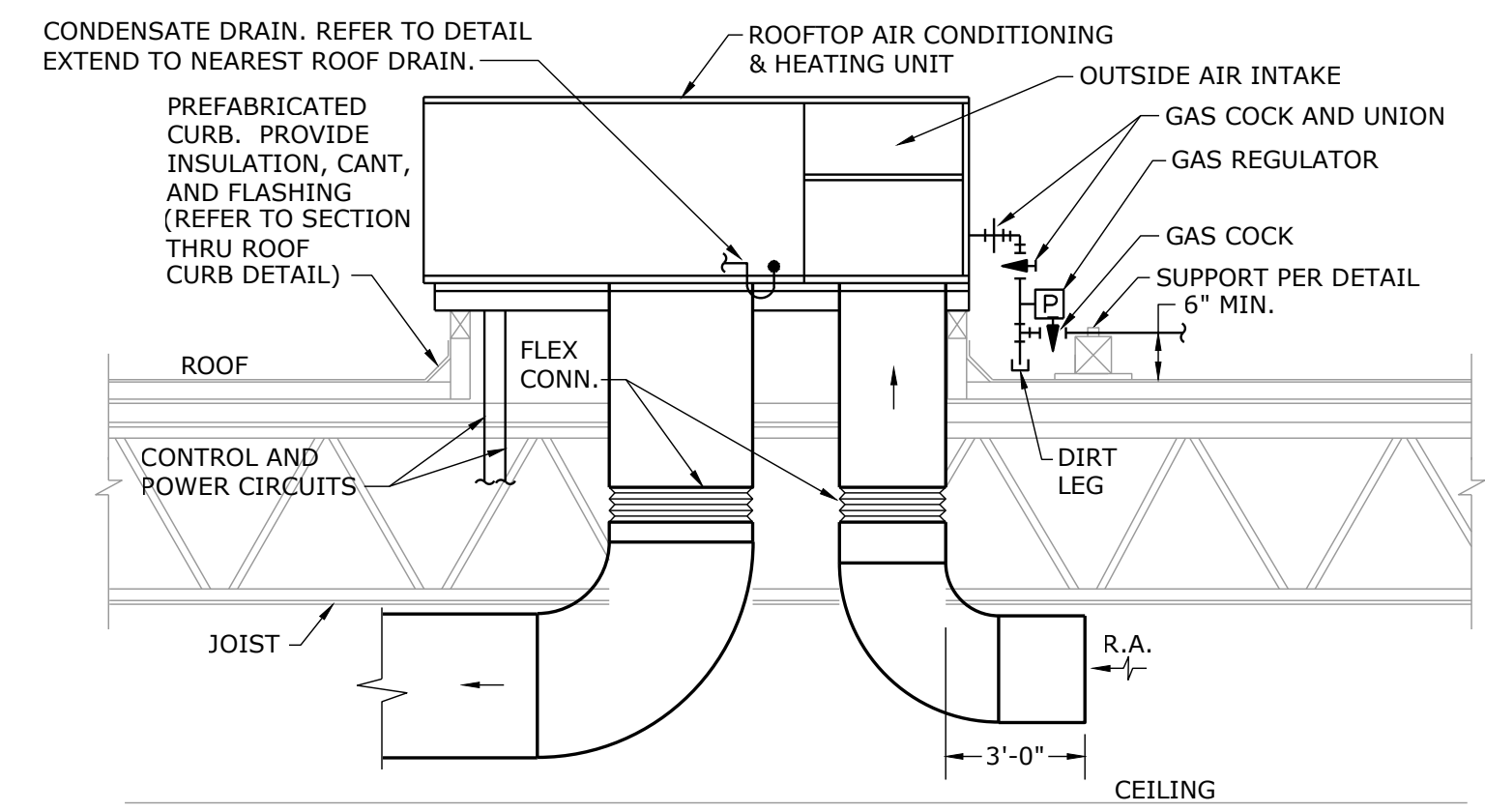




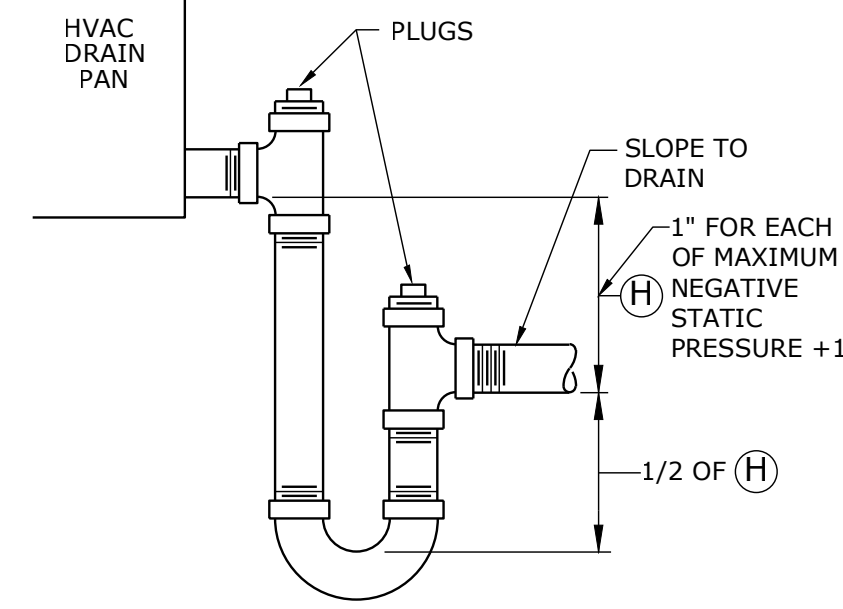
PITCH POCKET DETAIL FOR REFRIGERANT PIPING
NOT TO SCALE



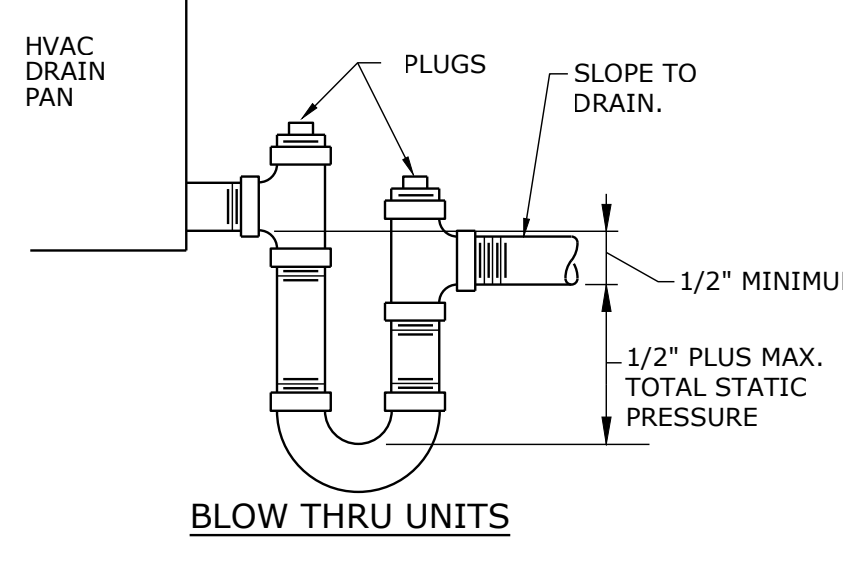
SECTION THRU ROOF CURB
NO SCALE



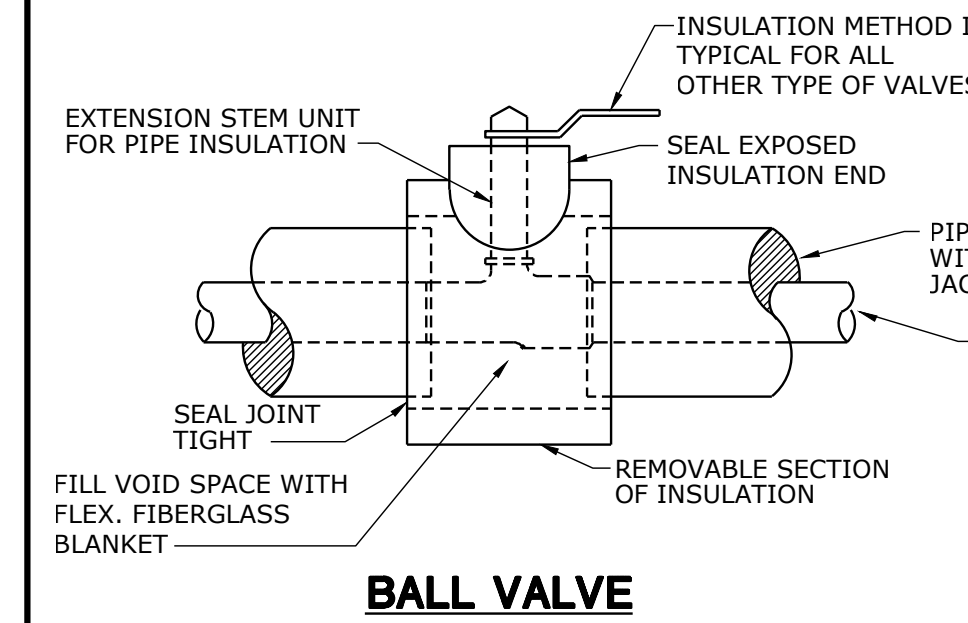
ROOFTOP UNIT DETAIL
NO SCALE



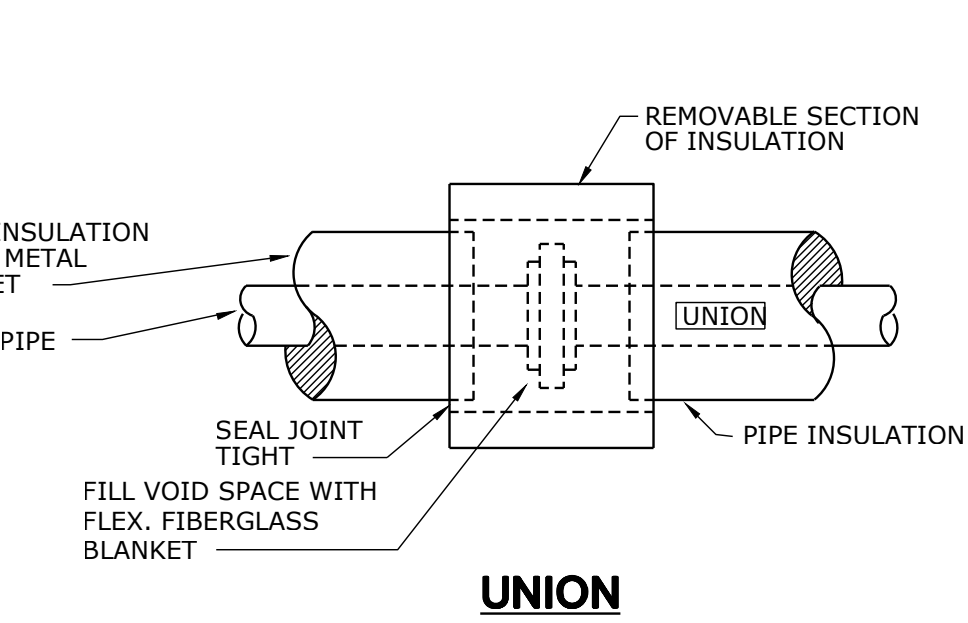
DRAW THRU UNITS



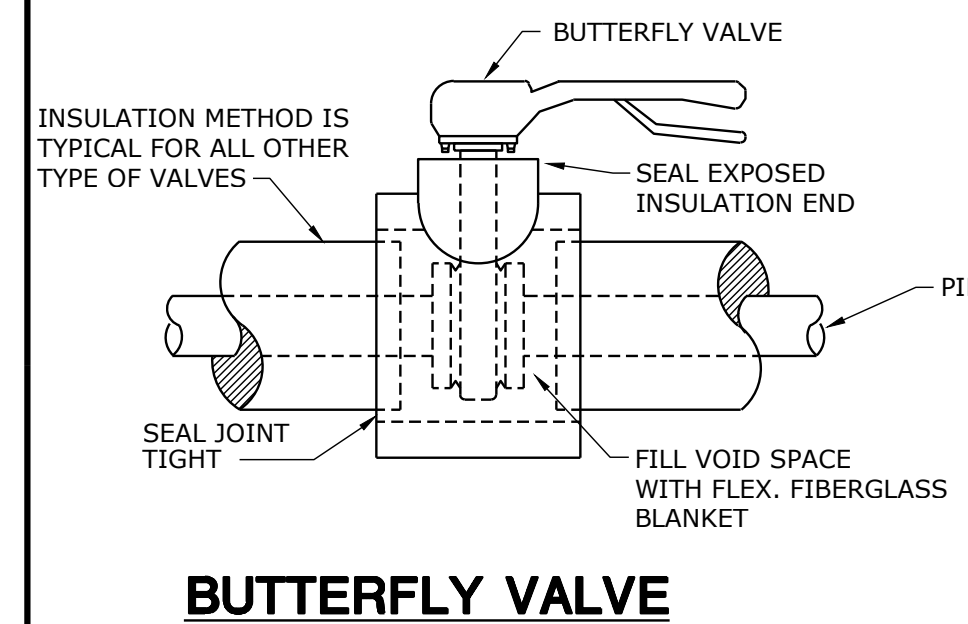
BLOW THRU UNITS



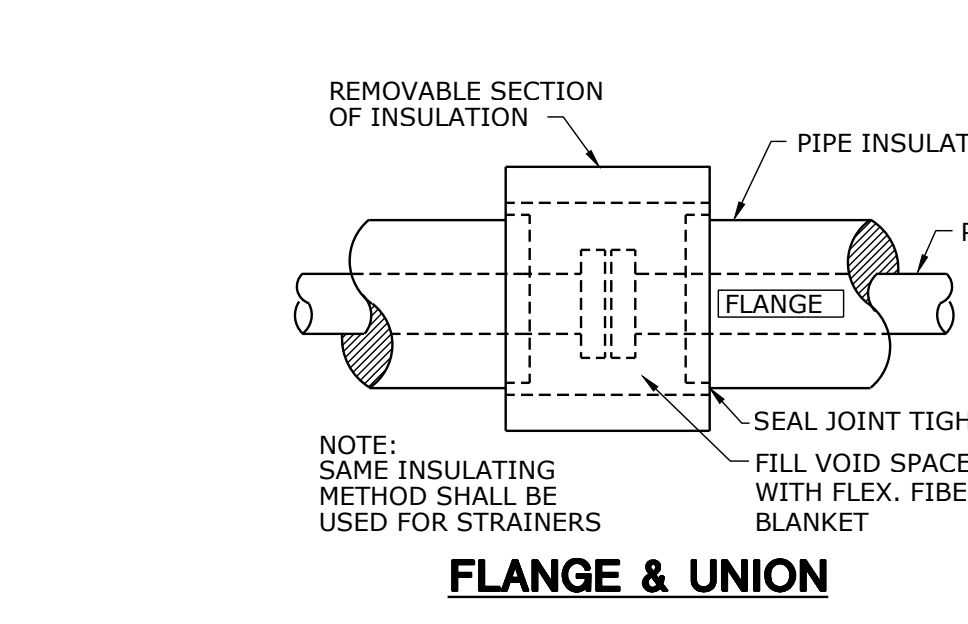
BALL VALVE



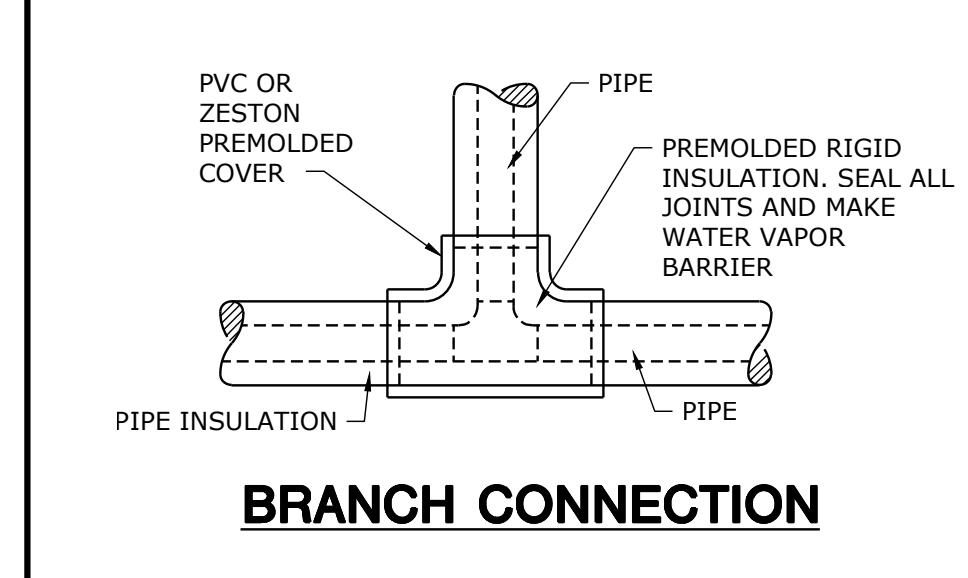
UNION



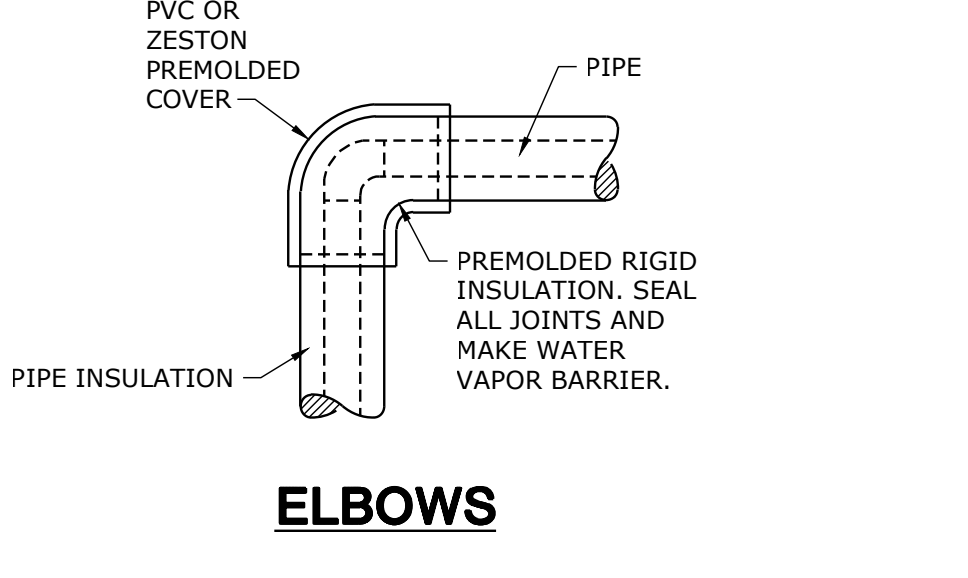
BUTTERFLY VALVE



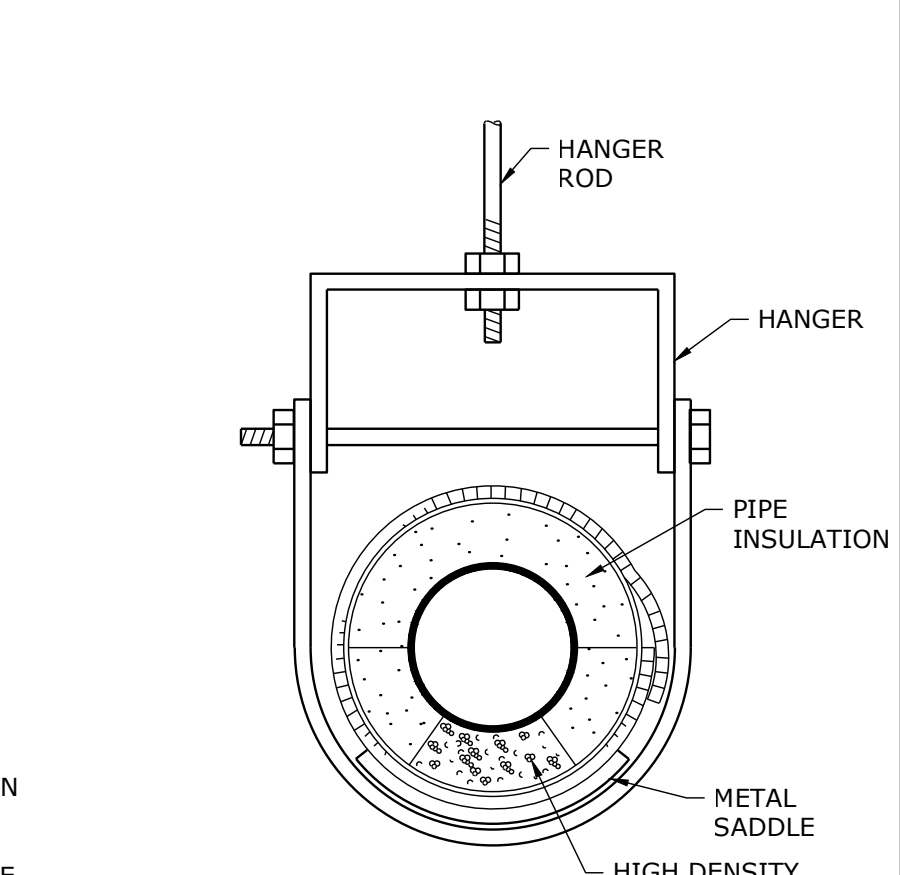
FLANGE & UNION



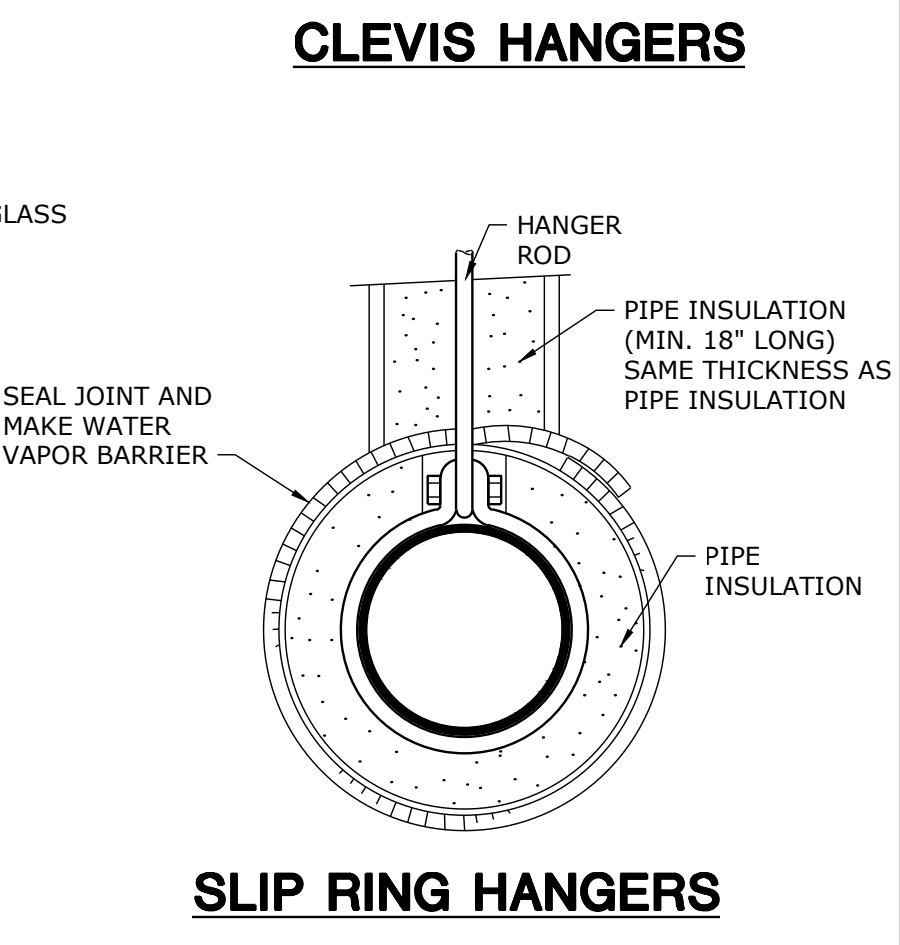
BRANCH CONNECTION



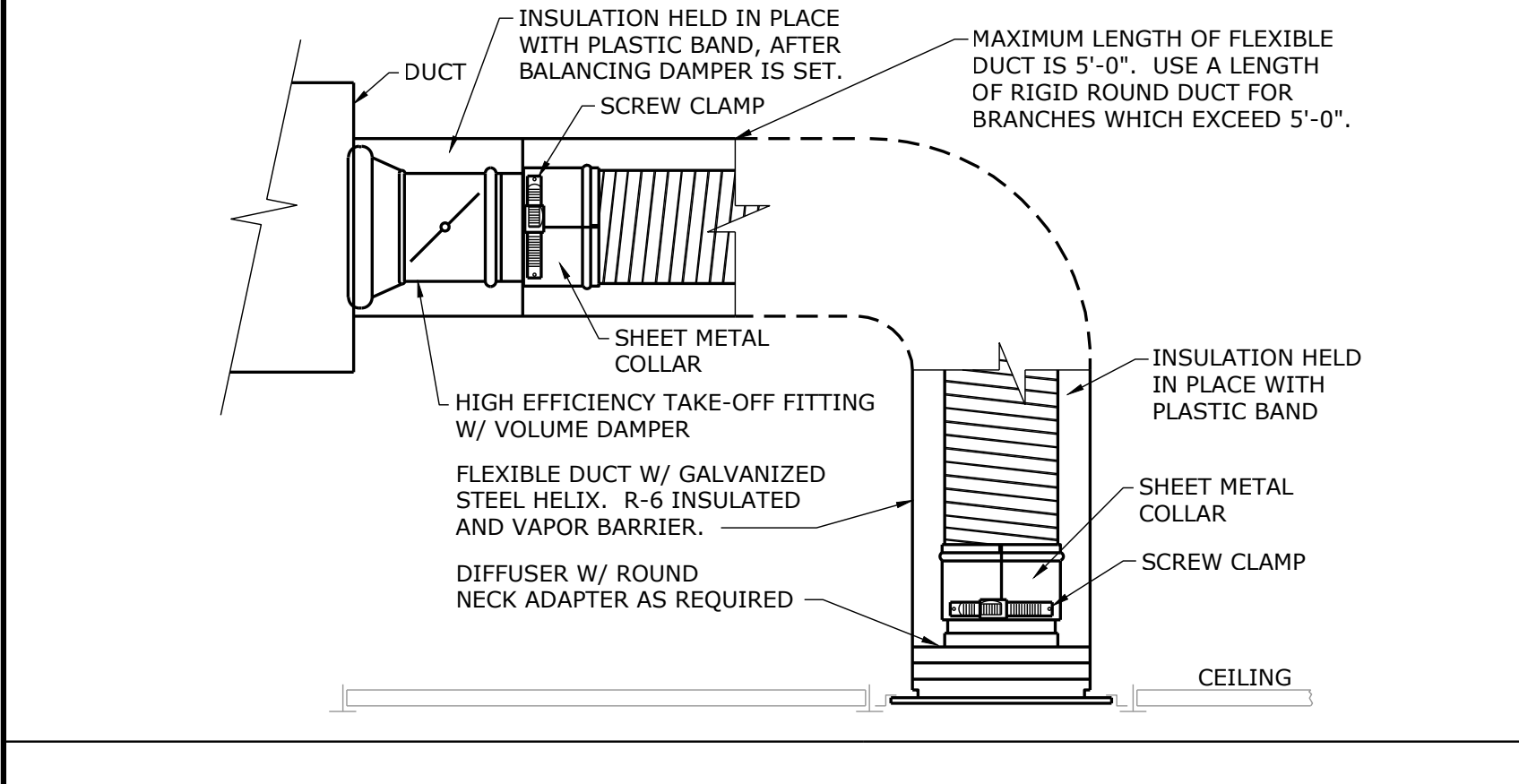
ELBOWS



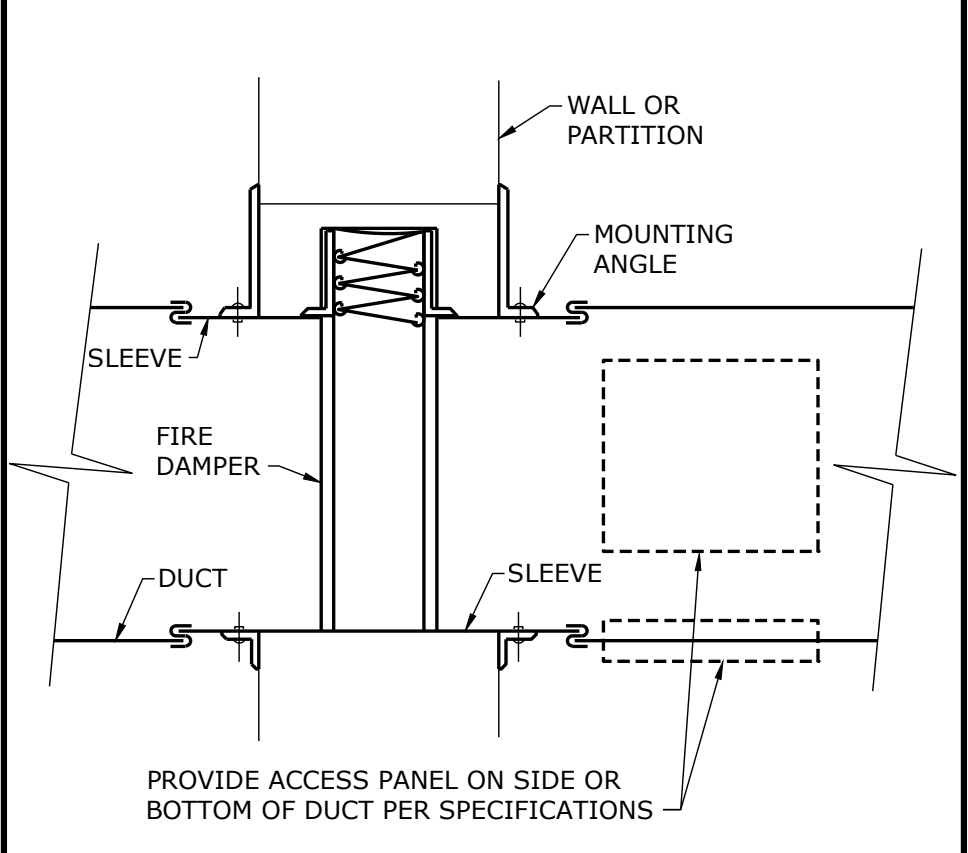
CLEVIS HANGERS



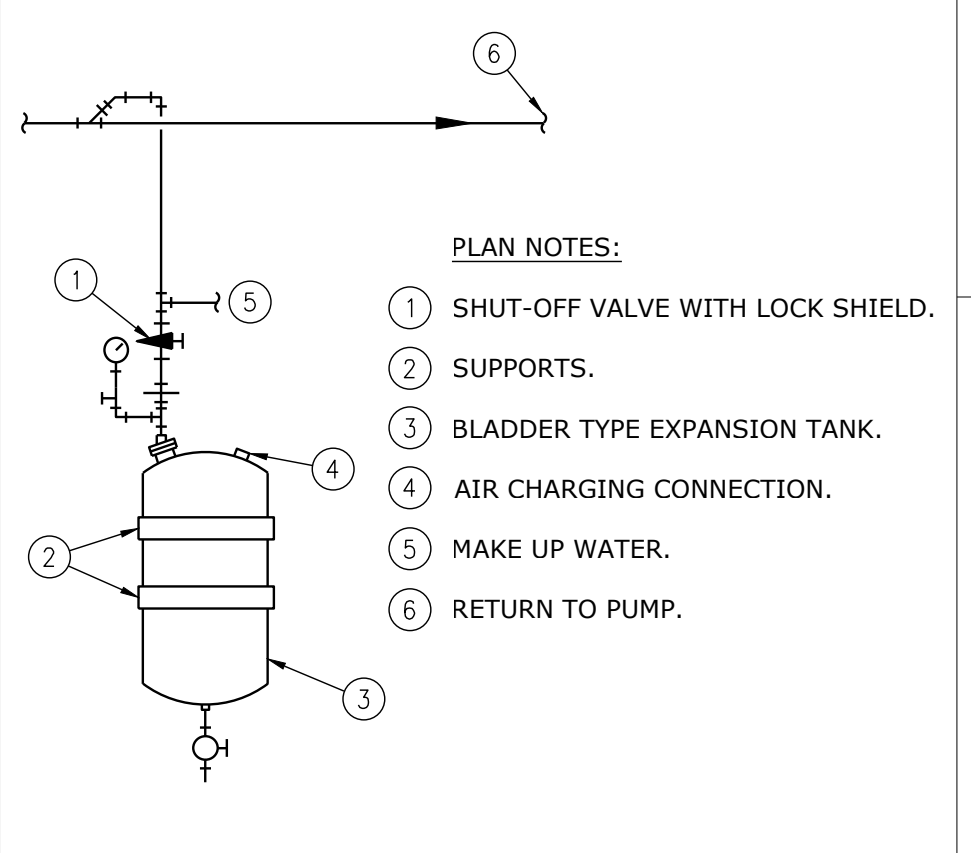
SLIP RING HANGERS



FLEXIBLE BRANCH DUCT DETAIL
NOT TO SCALE



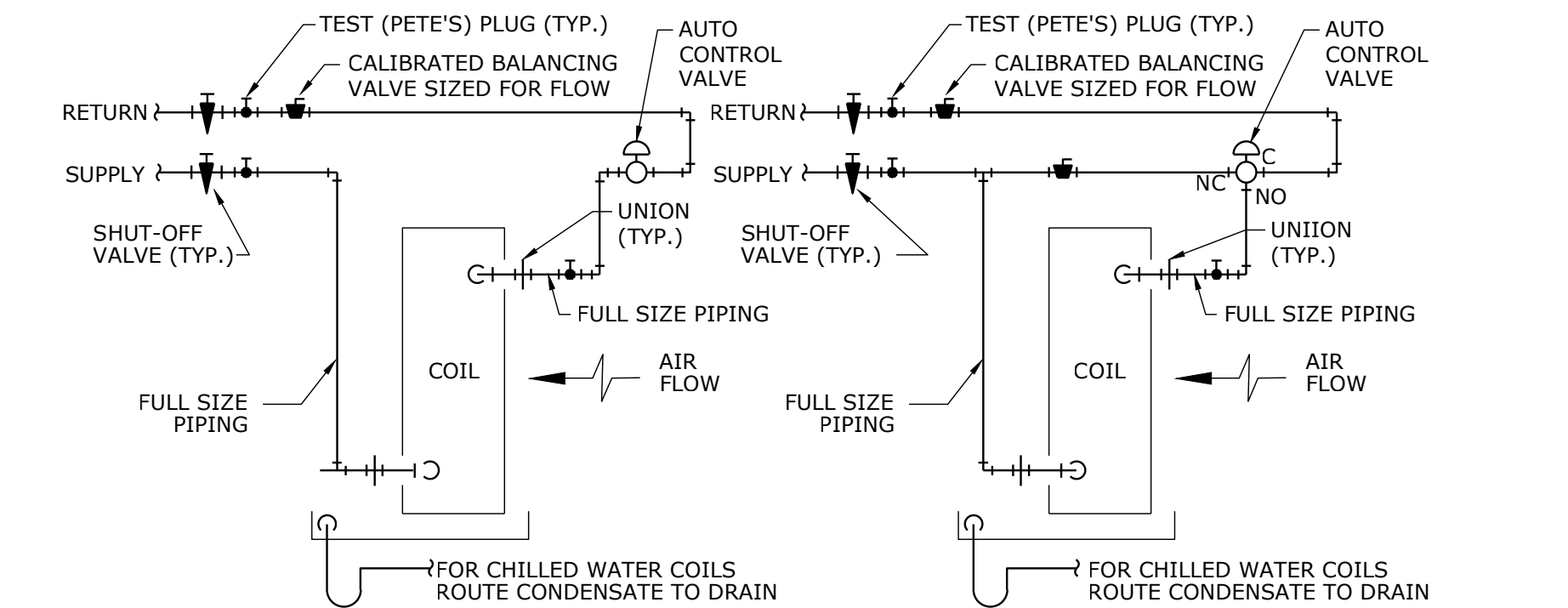
FIRE DAMPER DETAIL
NOT TO SCALE



EXPANSION TANK PIPING
NOT TO SCALE

CONDENSATE TRAP DRAIN DETAIL
NOT TO SCALE

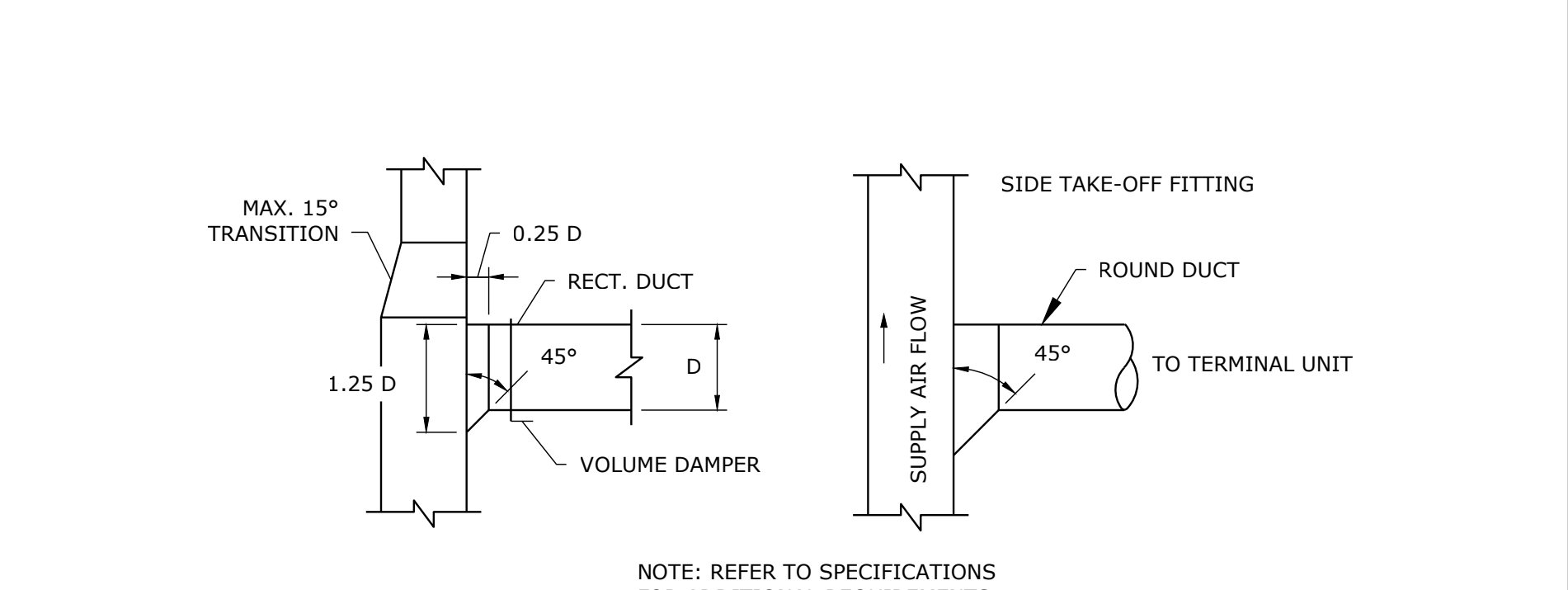
PIPE INSULATION DETAILS
NOT TO SCALE



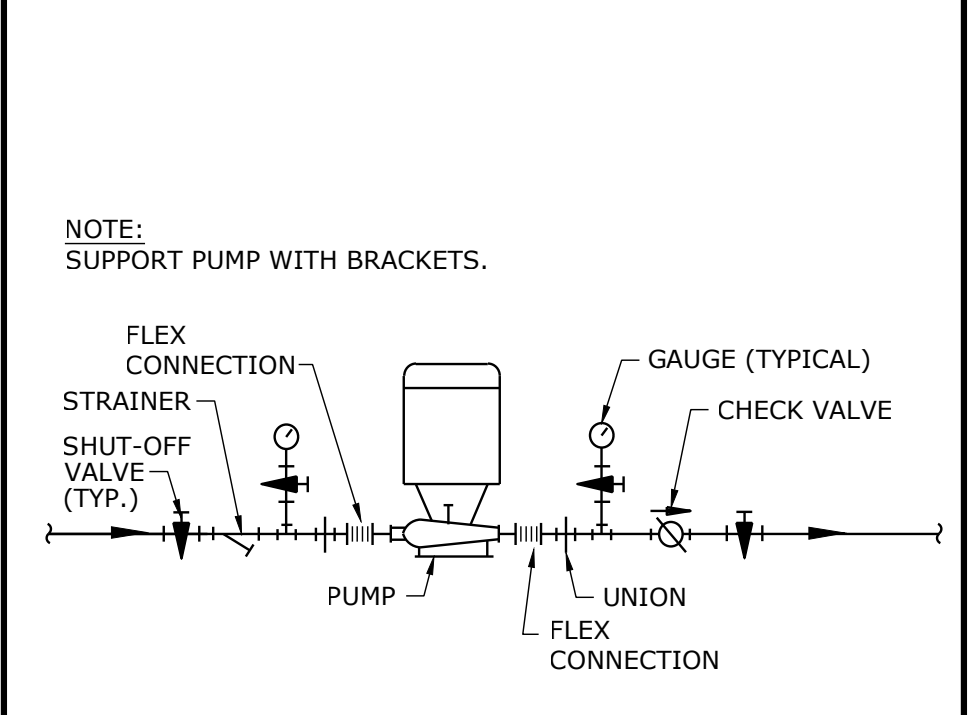
2-WAY VALVE

3-WAY VALVE

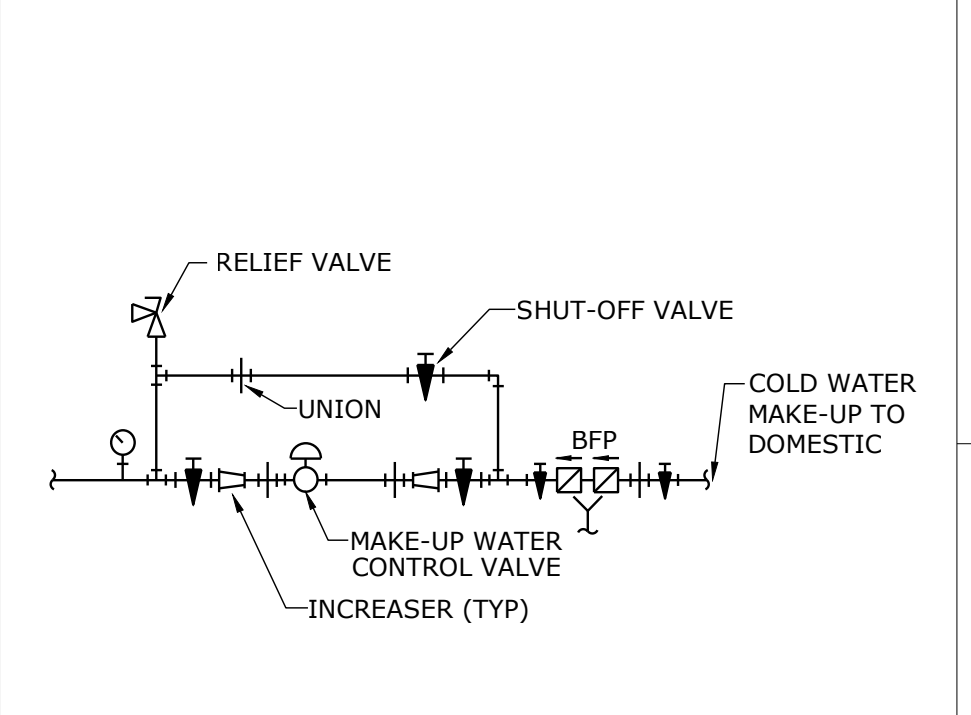
TERMINAL UNIT WATER COIL PIPING DIAGRAM
NO SCALE



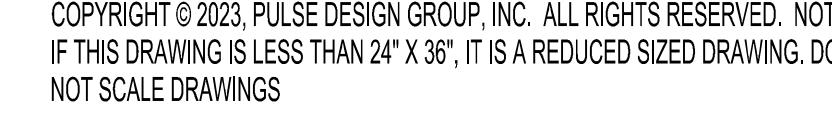
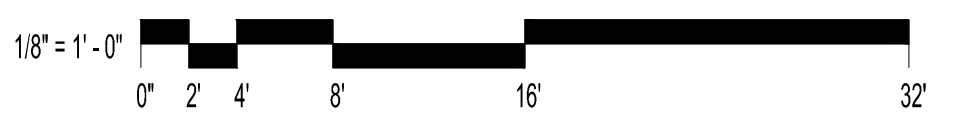
DUCT TAKE-OFF DETAIL
NOT TO SCALE



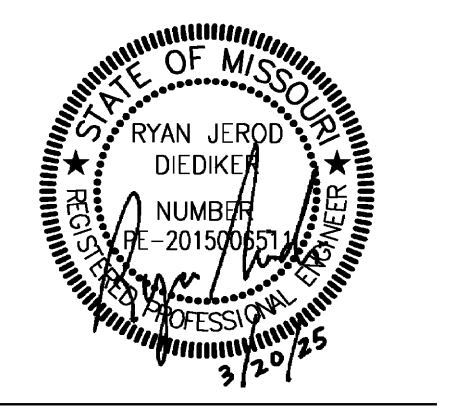
IN-LINE PUMP DETAIL (WALL-SUPPORTED)
NOT TO SCALE



MAKE-UP WATER DETAIL
NOT TO SCALE

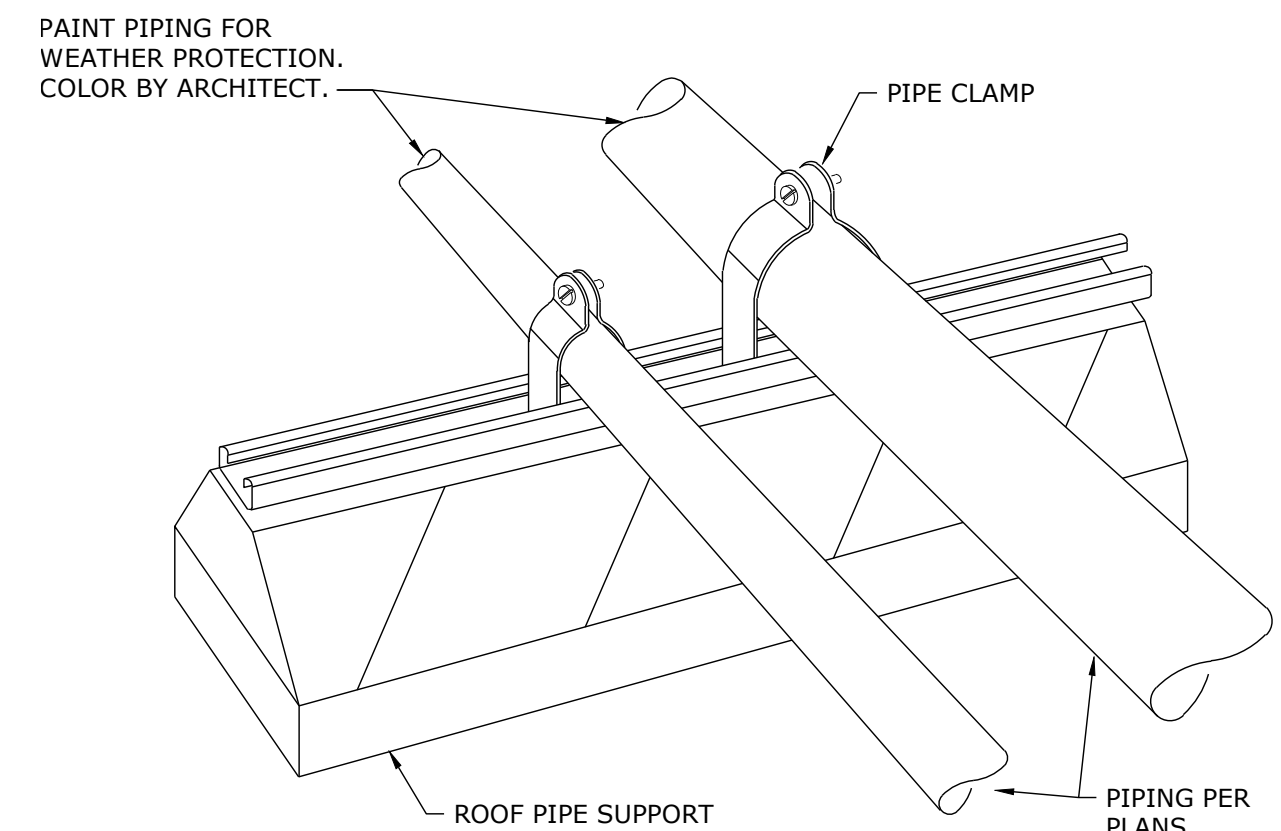


COPYRIGHT © 2023, PULSE DESIGN GROUP, INC. ALL RIGHTS RESERVED. NOTE: IF THIS DRAWING IS LESS THAN 24" X 36", IT IS A REDUCED SIZED DRAWING. DO NOT SCALE DRAWINGS

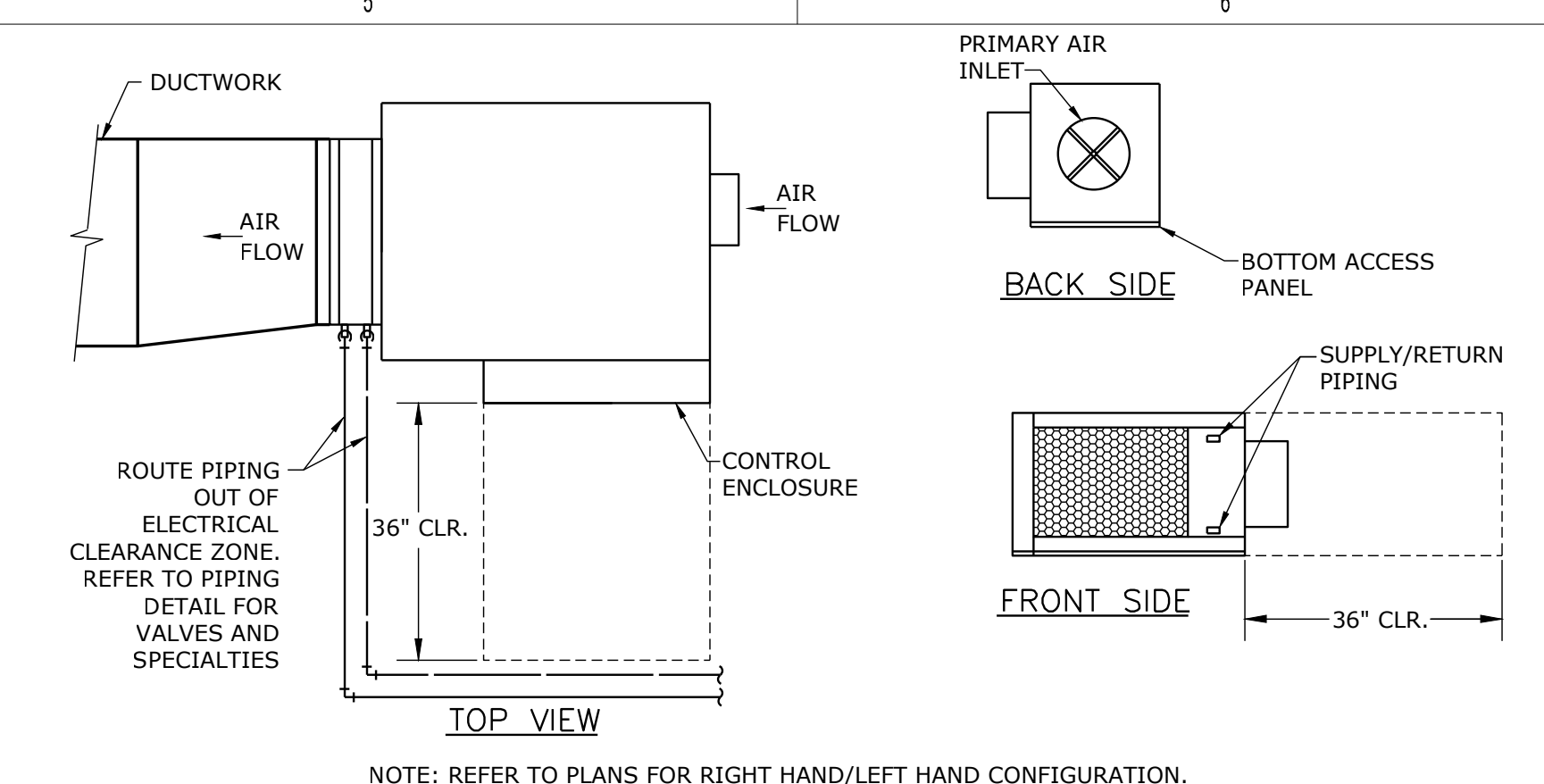


REVISION	DATE

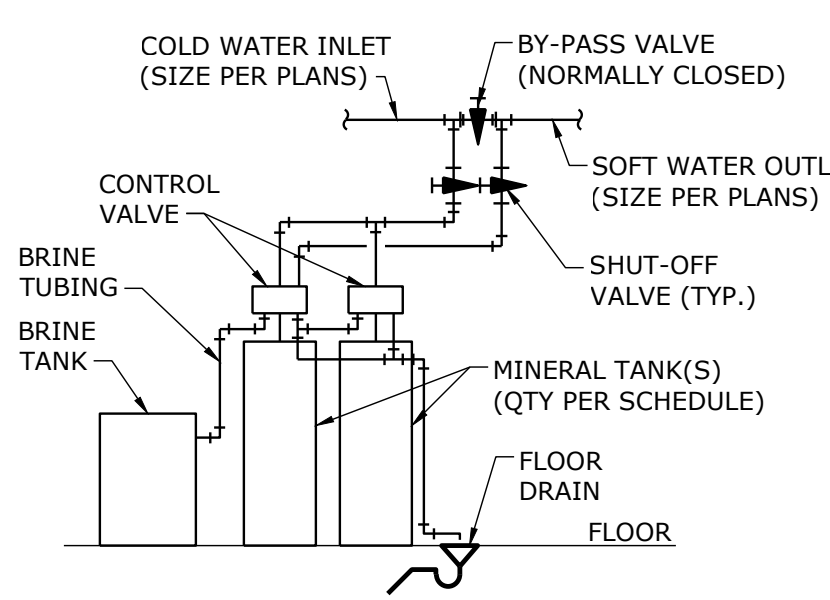
PROJECT NAME: 2314708 Liberty SD 2023 Heritage MS Renovations
AUTOCAD FILE LOCATION: \NAME: Jlangenfied Thursday, March 20, 2025 1:10:05 PM
LAST CORRECTION BY: Jlangenfied Thursday, March 20, 2025 4:25:41 PM
PLOTTED BY: Booty Charles



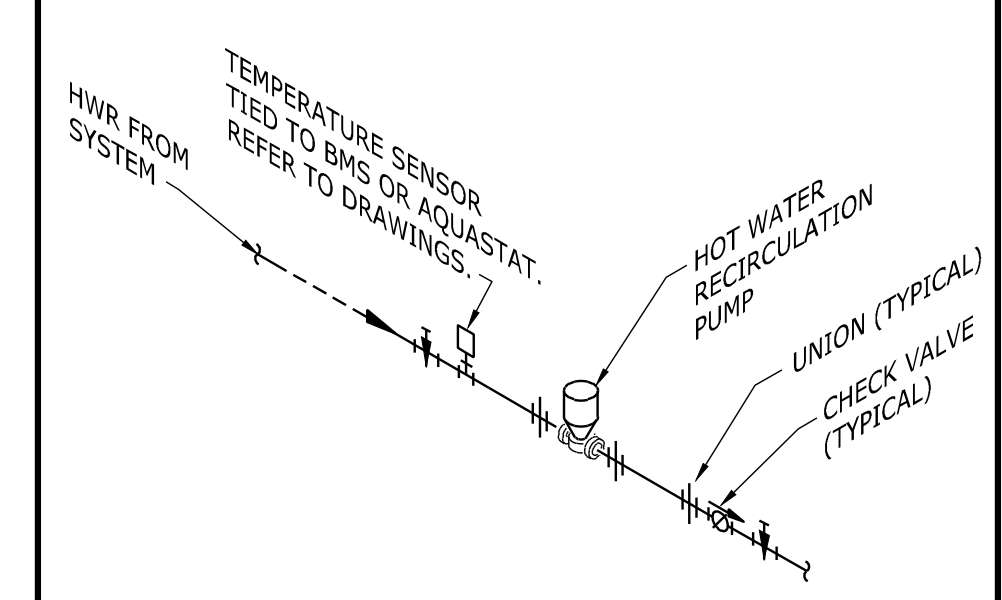
ROOF PIPING SUPPORT DETAIL
NOT TO SCALE



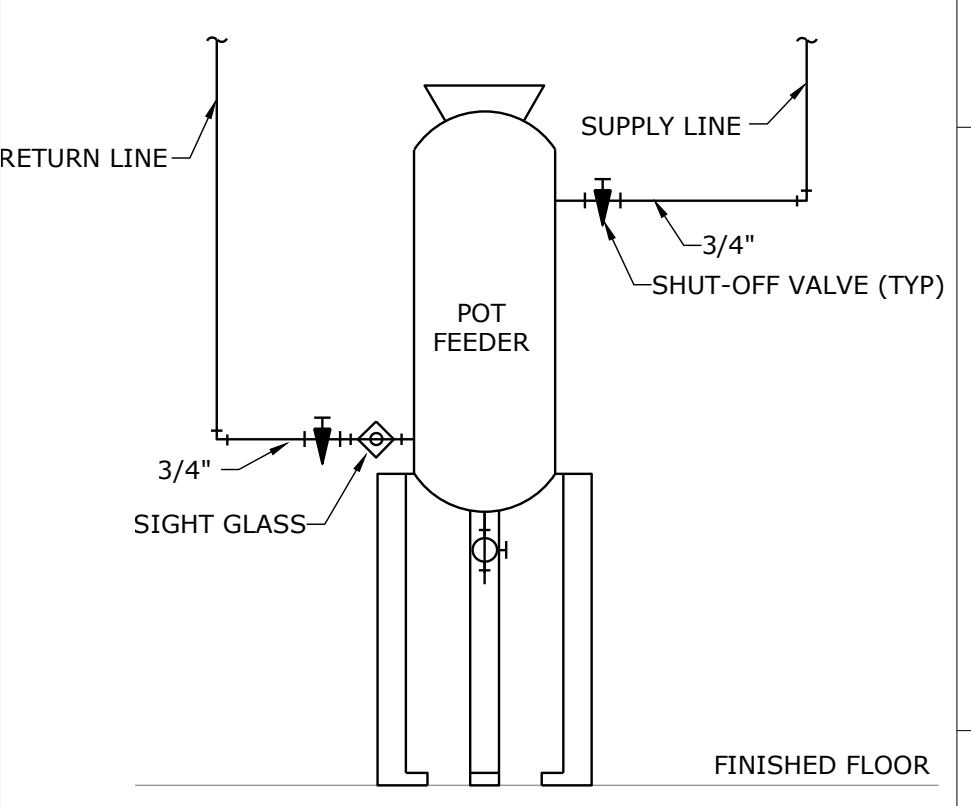
HOT WATER VAV TERMINAL
NO SCALE (HOT WATER)



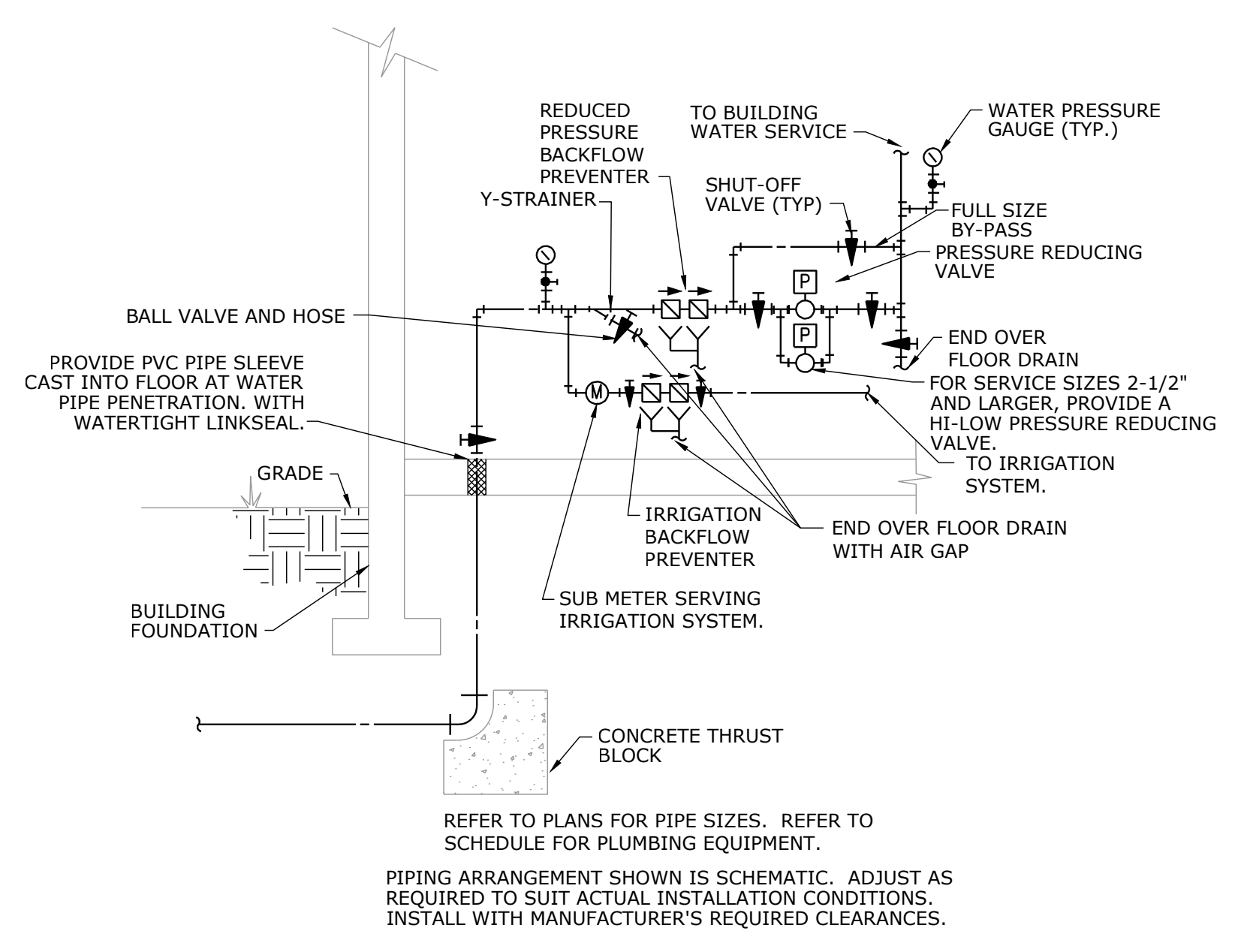
WATER SOFTENER PIPING DETAIL
NOT TO SCALE



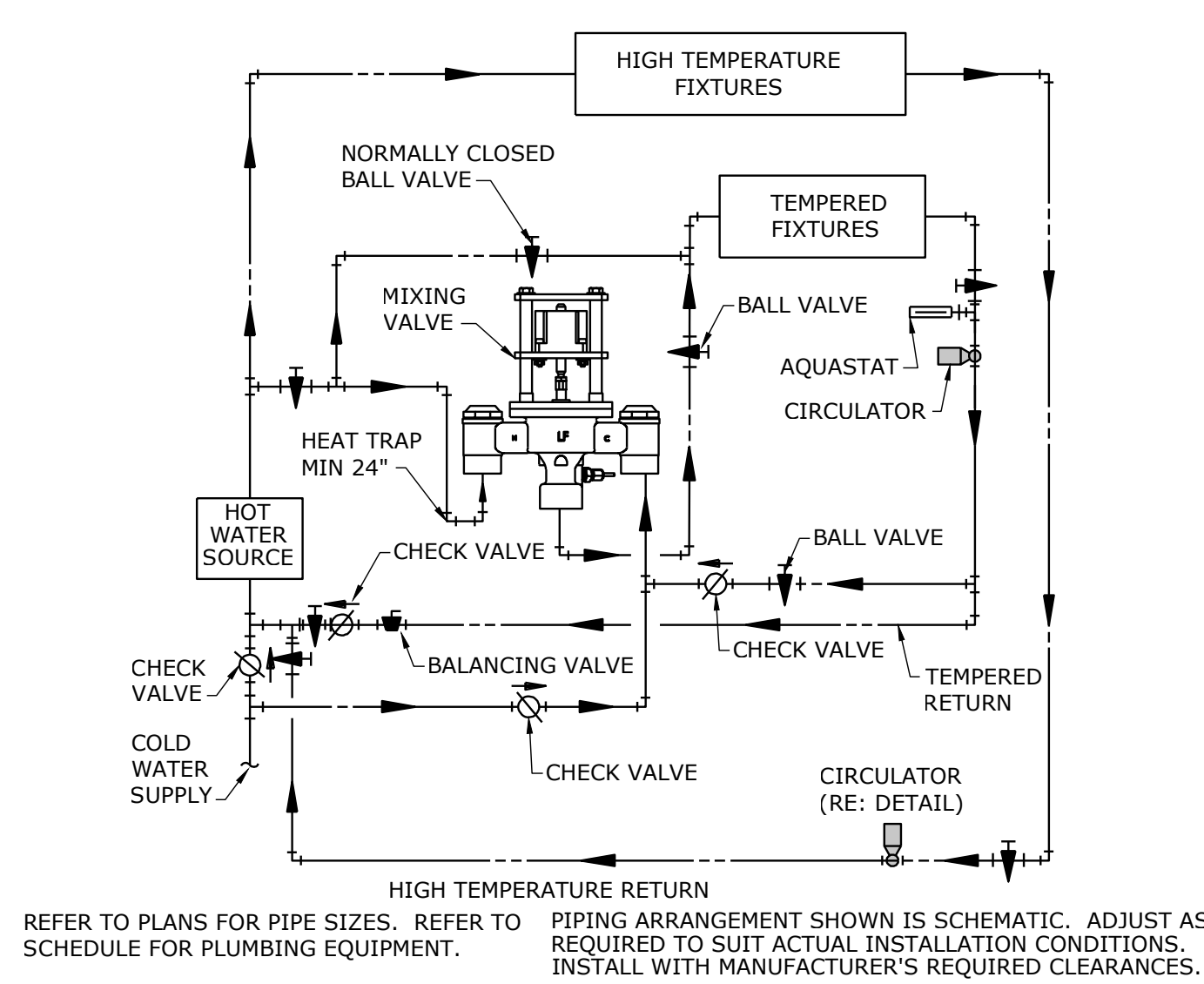
HOT WATER RECIRC PUMP DETAIL
NOT TO SCALE



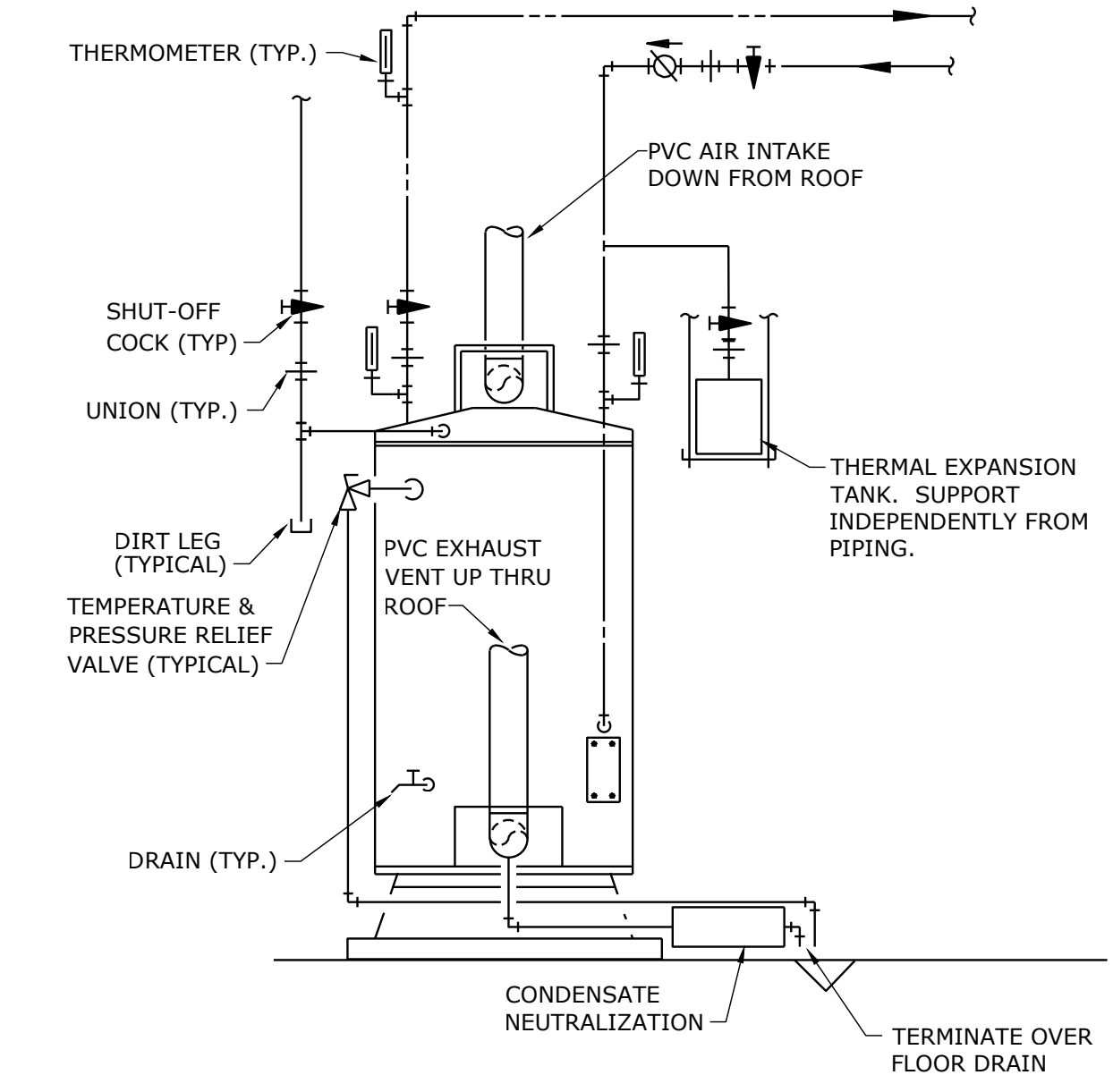
CHEMICAL POT FEEDER DETAIL
NOT TO SCALE



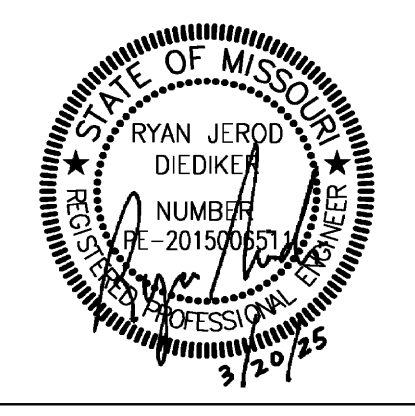
DOMESTIC WATER SERVICE DETAIL
NOT TO SCALE



DIGITAL MIXING VALVE ASSEMBLY
NOT TO SCALE



GAS WATER HEATER DETAIL
NOT TO SCALE



ISSUE DATE:	03/20/2025
PROJECT #:	24158
REVISION	DATE

PROJECT NAME: 2314708 Liberty SD 2023 Heritage MS Renovations
AUTOCAD FILE LOCATION: \\NAME: c:\Users\jdieker\Documents\2314708 Liberty SD 2023 Heritage MS Renovations\2314708 Liberty SD 2023 Heritage MS Renovations\2314708 Liberty SD 2023 Heritage MS Renovations.dwg
LAST CORRECTION BY: Jlangenfeld Thursday, March 20, 2025 1:10:03 PM
PLOTTED BY: Jlangenfeld Thursday, March 20, 2025 4:25:47 PM
BOOTH CHARLES

