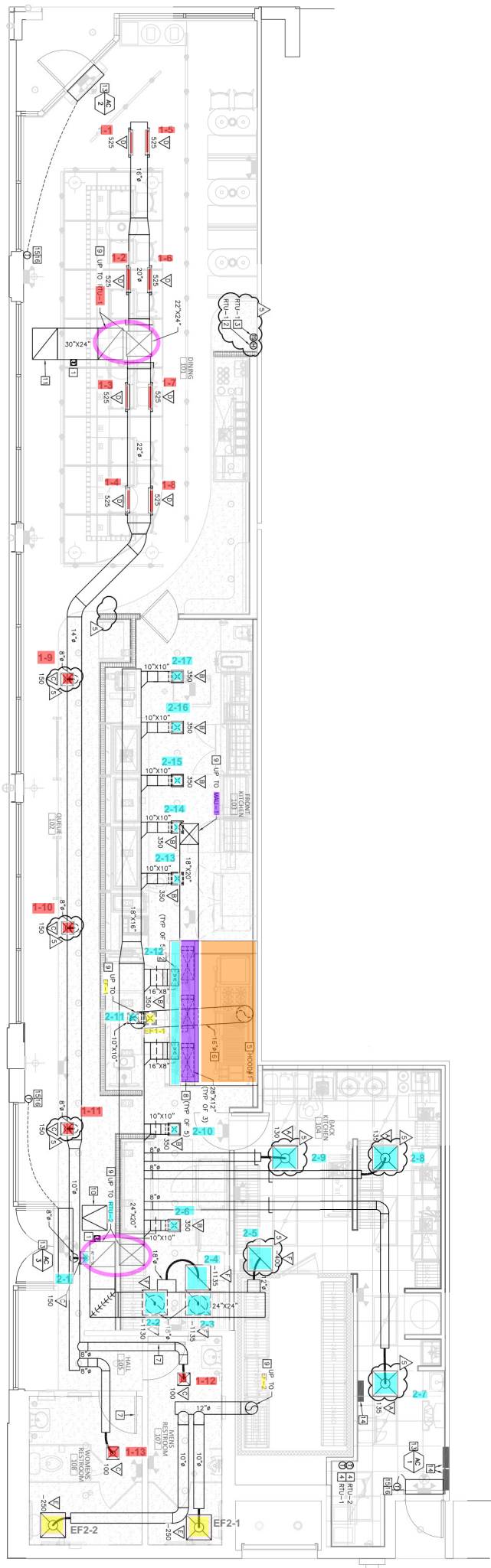


**01 MECHANICAL PLAN**  
1/4" = 1'-0"



1. INSTALL OWNER SUPPLIED TYPE 1 GRADE EXHAUST HOOD SUPPLIER HOOD PER MANUFACTURER'S INSTALLATION INSTRUCTIONS. PROVIDE AS REQUIRED. REFER TO HOOD DRAWINGS IN FOOD SERVICE SET FOR HOOD MAKEUP AND COMBUSTION AIR SUPPLY. SEE TO HOOD/COOLING BALANCE OF DUCT EQUAL TO CAPTURED SYSTEM MODEL 90A-3R OR 32 ROUND 20 INCHES DIAMETER. PROVIDE 18" X 18" EXHAUST FAN ON STAINLESS STEEL SHIELD FROM HOOD COLLAR TO EXHAUST FAN ON CEILING. PROVIDE CLEANOUTS AT EVERY CHANGE OF DIRECTION IN THE DUCT AND/OR EVERY 10 FEET WITH MINIMUM OF 3 FEET OF CLEARANCE IN CAPTURED REPRESENTATIVE.
2. PROVIDE HANGOUT SENSOR MOUNT SENSOR 48" ABOVE FINISHED FLOOR HANGOUT SENSOR SHALL OPERATE REFRIGERATION SYSTEM AND INVAITE RPT OAS REFRIG AS REQUIRED TO MAINTAIN SPACE HUMIDITY AT 55%.
3. PROVIDE REDDOT TEMPERATURE SENSOR COMPATIBLE WITH THERMSTAT. MOUNT SENSOR 48" ABOVE FINISHED FLOOR.
4. PROVIDE HONEYWELL W-H1 TYPSON PRO 8000 TOUCHSCREEN 7-DAY START CAPABILITY MOUNT THERMSTAT 48" ABOVE FINISHED FLOOR. PROVIDE THERMSTAT INSTALLATION LOCATION OF THERMSTAT WITH OWNER'S REPRESENTATIVE.
5. INSTALL OWNER PROVIDED TYPE 1 GRADE EXHAUST HOOD SUPPLIER HOOD PER MANUFACTURER'S INSTALLATION INSTRUCTIONS. PROVIDE AS REQUIRED. REFER TO HOOD DRAWINGS IN FOOD SERVICE SET FOR HOOD MAKEUP AND COMBUSTION AIR SUPPLY. SEE TO HOOD/COOLING BALANCE OF DUCT EQUAL TO CAPTURED SYSTEM MODEL 90A-3R OR 32 ROUND 20 INCHES DIAMETER. PROVIDE 18" X 18" EXHAUST FAN ON STAINLESS STEEL SHIELD FROM HOOD COLLAR TO EXHAUST FAN ON CEILING. PROVIDE CLEANOUTS AT EVERY CHANGE OF DIRECTION IN THE DUCT AND/OR EVERY 10 FEET WITH MINIMUM OF 3 FEET OF CLEARANCE IN CAPTURED REPRESENTATIVE.
6. PROVIDE HANGOUT SENSOR MOUNT SENSOR 48" ABOVE FINISHED FLOOR HANGOUT SENSOR SHALL OPERATE REFRIGERATION SYSTEM AND INVAITE RPT OAS REFRIG AS REQUIRED TO MAINTAIN SPACE HUMIDITY AT 55%.
7. PROVIDE REDDOT TEMPERATURE SENSOR COMPATIBLE WITH THERMSTAT. MOUNT SENSOR 48" ABOVE FINISHED FLOOR.
8. PROVIDE HONEYWELL W-H1 TYPSON PRO 8000 TOUCHSCREEN 7-DAY START CAPABILITY MOUNT THERMSTAT 48" ABOVE FINISHED FLOOR. PROVIDE THERMSTAT INSTALLATION LOCATION OF THERMSTAT WITH OWNER'S REPRESENTATIVE.
9. INSTALL OWNER PROVIDED TYPE 1 GRADE EXHAUST HOOD SUPPLIER HOOD PER MANUFACTURER'S INSTALLATION INSTRUCTIONS. PROVIDE AS REQUIRED. REFER TO HOOD DRAWINGS IN FOOD SERVICE SET FOR HOOD MAKEUP AND COMBUSTION AIR SUPPLY. SEE TO HOOD/COOLING BALANCE OF DUCT EQUAL TO CAPTURED SYSTEM MODEL 90A-3R OR 32 ROUND 20 INCHES DIAMETER. PROVIDE 18" X 18" EXHAUST FAN ON STAINLESS STEEL SHIELD FROM HOOD COLLAR TO EXHAUST FAN ON CEILING. PROVIDE CLEANOUTS AT EVERY CHANGE OF DIRECTION IN THE DUCT AND/OR EVERY 10 FEET WITH MINIMUM OF 3 FEET OF CLEARANCE IN CAPTURED REPRESENTATIVE.
10. PROVIDE HANGOUT SENSOR MOUNT SENSOR 48" ABOVE FINISHED FLOOR HANGOUT SENSOR SHALL OPERATE REFRIGERATION SYSTEM AND INVAITE RPT OAS REFRIG AS REQUIRED TO MAINTAIN SPACE HUMIDITY AT 55%.
11. PROVIDE REDDOT TEMPERATURE SENSOR COMPATIBLE WITH THERMSTAT. MOUNT SENSOR 48" ABOVE FINISHED FLOOR.
12. PROVIDE HONEYWELL W-H1 TYPSON PRO 8000 TOUCHSCREEN 7-DAY START CAPABILITY MOUNT THERMSTAT 48" ABOVE FINISHED FLOOR. PROVIDE THERMSTAT INSTALLATION LOCATION OF THERMSTAT WITH OWNER'S REPRESENTATIVE.
13. PROVIDE HANGOUT SENSOR MOUNT SENSOR 48" ABOVE FINISHED FLOOR HANGOUT SENSOR SHALL OPERATE REFRIGERATION SYSTEM AND INVAITE RPT OAS REFRIG AS REQUIRED TO MAINTAIN SPACE HUMIDITY AT 55%.