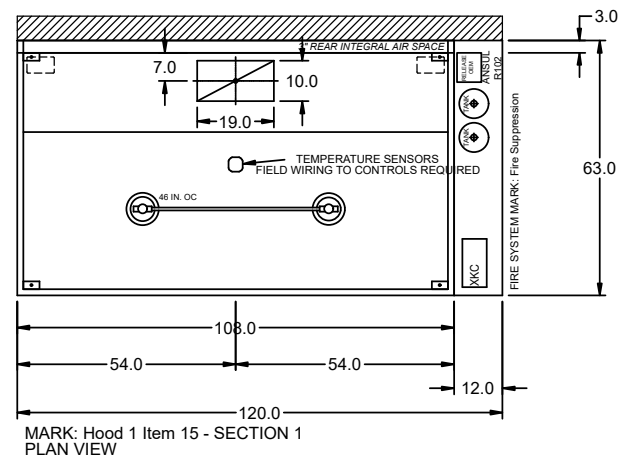


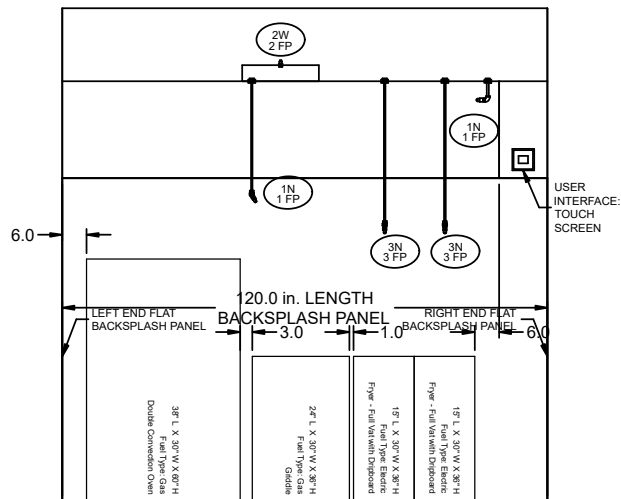
| HOOD INFORMATION |                |            |                       |       |        |              |                            |           |           |      |     |         |        |  |                   |                  |        |
|------------------|----------------|------------|-----------------------|-------|--------|--------------|----------------------------|-----------|-----------|------|-----|---------|--------|--|-------------------|------------------|--------|
| HOOD NO.         | MARK           | MODEL      | HOOD DIMENSIONS (IN.) |       |        | HOOD CONSTR. | COOKING LOAD / DUTY RATING | EXHAUST   |           |      |     |         | SUPPLY |  | TOTAL WEIGHT LBS. | SECTION LOCATION |        |
|                  |                |            | LENGTH                | WIDTH | HEIGHT |              |                            | TOTAL CFM | COLLAR(S) |      |     | MUA CFM | AC CFM |  |                   |                  |        |
|                  |                |            |                       |       |        |              |                            | WIDTH     | LENGTH    | DIA. | CFM | S.P.    |        |  |                   |                  |        |
| 1                | HOOD 1 ITEM 15 | XXEW-108-S | 108                   | 63    | 24     | 300 SS 100%  | HEAVY                      | 2025      | 10        | 19   |     | 2025    | 0.546  |  |                   | 315.956          | SINGLE |

| HOOD INFORMATION |                |                               |     |              |                           |     |            |                    |             |            |          |           |             |  |  |
|------------------|----------------|-------------------------------|-----|--------------|---------------------------|-----|------------|--------------------|-------------|------------|----------|-----------|-------------|--|--|
| HOOD NO.         | MARK           | LIGHTING DETAILS              |     |              | GREASE FILTRATION DETAILS |     |            | UTILITY CABINET(S) |             |            |          |           |             |  |  |
|                  |                | FIXTURE TYPE BULB / LAMP INFO | QTY | FOOT CANDLES | TYPE / MODEL MATERIAL     | QTY | SIZE (IN.) | LOCATION           | FIRE SYSTEM |            | CONTROLS |           |             |  |  |
|                  |                |                               |     |              |                           | L   | H          |                    | TYPE        | SIZE       | MODEL    | INTERFACE |             |  |  |
| 1                | HOOD 1 ITEM 15 | ROUND LED                     | 2   | 62.94        | X-TRACTOR STAINLESS STEEL | 3   | 16         | 20                 | RIGHT       | ANSUL R102 | 6        | XKC       | TOUCHSCREEN |  |  |

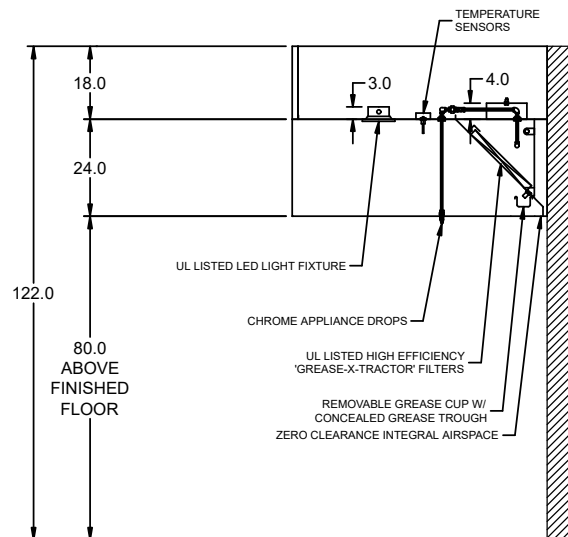
| HOOD OPTIONS   |  | SPECIAL DESIGN REQUESTS               |  |
|--|--|---------------------------------------|--|
| UL 710 LISTED W/ OUT EXHAUST FIRE DAMPER - UL #R25625<br>BACK INTEGRAL AIR SPACE - 3 IN WIDE - ZERO CLEARANCE<br>18 IN HIGH CEILING ENCLOSURES - FRONT LEFT RIGHT - FIELD INSTALLED<br>FACTORY MOUNTED EXHAUST COLLAR(S)<br>FILTER REMOVAL TOOL INCLUDED - QTY 1<br>BACKSPLASH 80.00 IN HIGH 120.00 IN LONG<br>LEFT SIDESPLASH 122.00 IN HIGH 18.00 IN LONG<br>RIGHT SIDESPLASH 122.00 IN HIGH 18.00 IN LONG<br>PERFORMANCE ENHANCING LIP (PEL) TECHNOLOGY<br>STANDING SEAM CONSTRUCTION FOR SUPERIOR STRENGTH |  | SDR #Q9999999 - VERIFY CEILING HEIGHT |  |



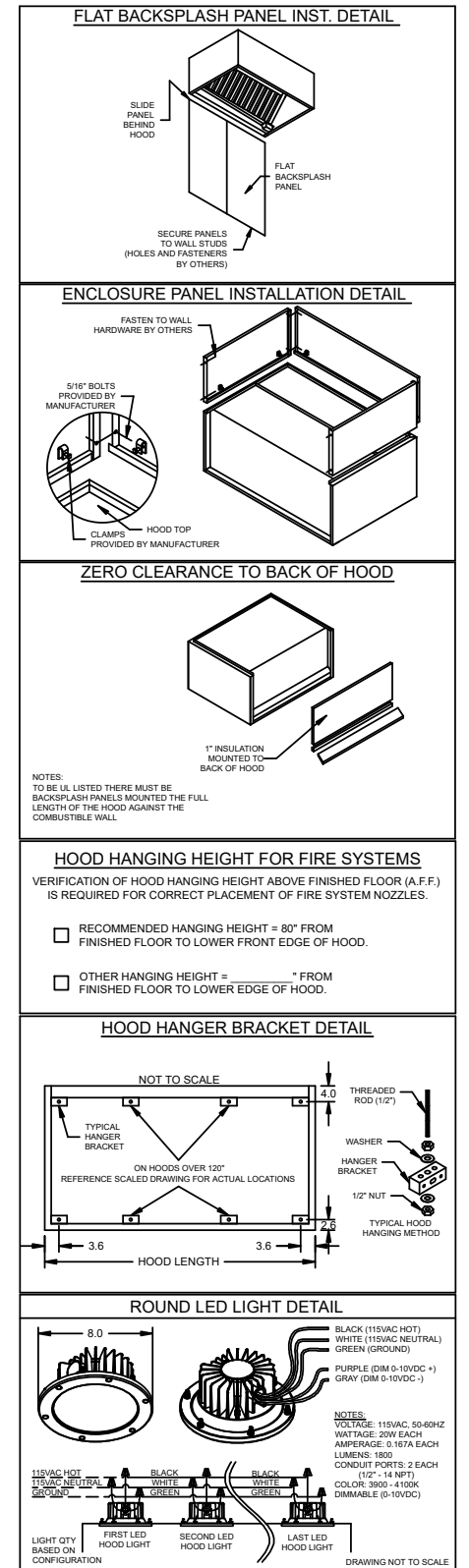
MARK: Hood 1 Item 15 - SECTION 1 PLAN VIEW

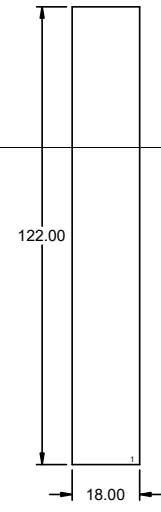


MARK: Hood 1 Item 15 - SECTION 1 ELEVATION VIEW

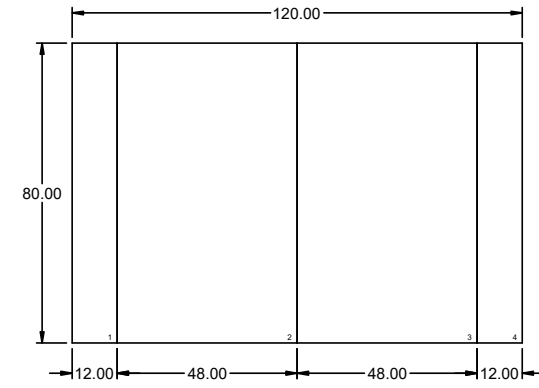


MARK: Hood 1 Item 15 SECTION VIEW

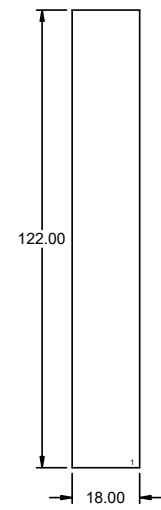




LEFT SIDE SPLASH



BACK SPLASH



RIGHT SIDE SPLASH

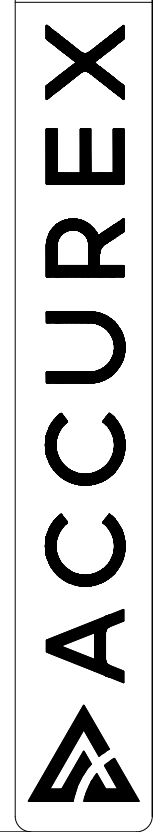
PROJECT  
1/26/2023

MARK

Nicolet High School Culinary -  
Glendale, WI R1

Hood 1 Item 15 - SPLASH PANEL LAYOUT

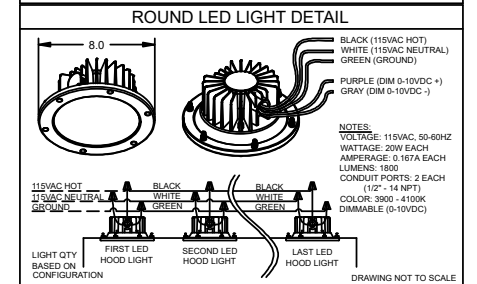
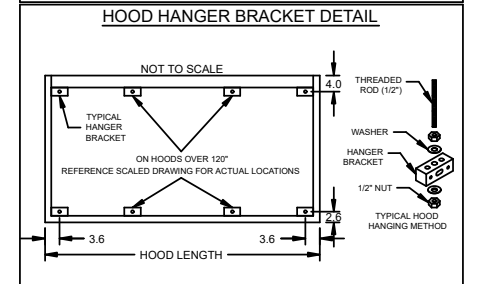
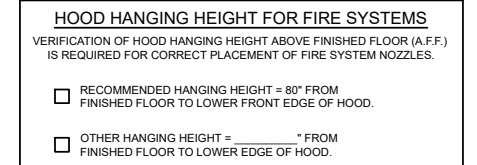
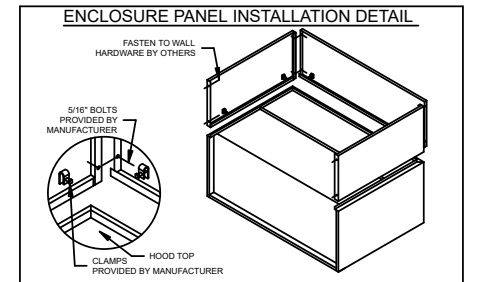
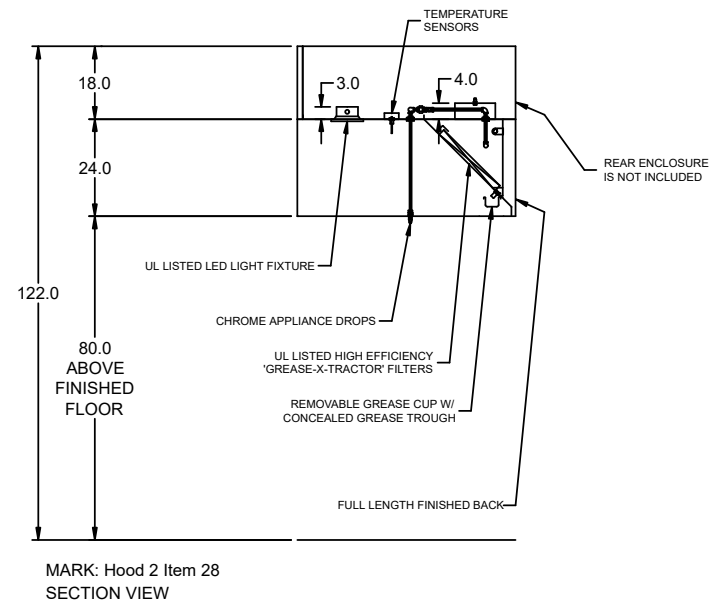
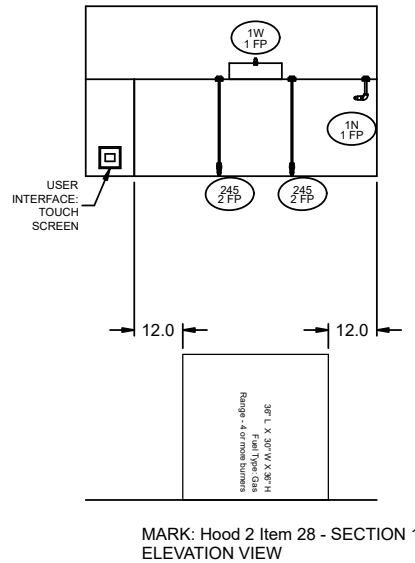
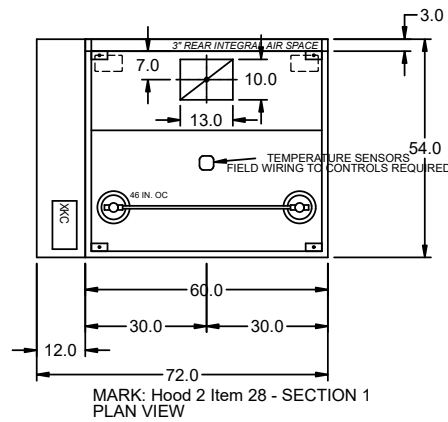
ACCUREX W/IA  
Brad Bonchardt  
philip.kraft@accurex.com  
(262)227-7865



| HOOD INFORMATION |                |           |                       |       |        |              |                            |           |           |      |     |         |        |  |                   |                  |        |
|------------------|----------------|-----------|-----------------------|-------|--------|--------------|----------------------------|-----------|-----------|------|-----|---------|--------|--|-------------------|------------------|--------|
| HOOD NO.         | MARK           | MODEL     | HOOD DIMENSIONS (IN.) |       |        | HOOD CONSTR. | COOKING LOAD / DUTY RATING | EXHAUST   |           |      |     |         | SUPPLY |  | TOTAL WEIGHT LBS. | SECTION LOCATION |        |
|                  |                |           | LENGTH                | WIDTH | HEIGHT |              |                            | TOTAL CFM | COLLAR(S) |      |     | MUA CFM | AC CFM |  |                   |                  |        |
|                  |                |           |                       |       |        |              |                            | WIDTH     | LENGTH    | DIA. | CFM | S.P.    |        |  |                   |                  |        |
| 1                | HOOD 2 ITEM 28 | XXEW-60-S | 60                    | 54    | 24     | 300 SS 100%  | HEAVY                      | 1375      | 10        | 13   |     | 1375    | 0.672  |  |                   | 184.972          | SINGLE |

| HOOD INFORMATION |                |                               |     |              |                           |     |                |                    |             |      |          |             |  |
|------------------|----------------|-------------------------------|-----|--------------|---------------------------|-----|----------------|--------------------|-------------|------|----------|-------------|--|
| HOOD NO.         | MARK           | LIGHTING DETAILS              |     |              | GREASE FILTRATION DETAILS |     |                | UTILITY CABINET(S) |             |      |          |             |  |
|                  |                | FIXTURE TYPE BULB / LAMP INFO | QTY | FOOT CANDLES | TYPE / MODEL MATERIAL     | QTY | SIZE (IN.) L H | LOCATION           | FIRE SYSTEM |      | CONTROLS |             |  |
|                  |                |                               |     |              |                           |     |                |                    | TYPE        | SIZE | MODEL    | INTERFACE   |  |
| 1                | HOOD 2 ITEM 28 | ROUND LED                     | 2   | 72.3         | X-TRACTOR STAINLESS STEEL | 0   | 16 20          | LEFT               |             |      | XKC      | TOUCHSCREEN |  |

| HOOD OPTIONS   |  |  |  |  | SPECIAL DESIGN REQUESTS               |  |  |  |  |
|--|--|--|--|--|---------------------------------------|--|--|--|--|
| UL 710 LISTED W/ OUT EXHAUST FIRE DAMPER - UL #R25625<br>BACK INTEGRAL AIR SPACE - 3 IN WIDE<br>FINISHED BACK - FULL LENGTH<br>18 IN HIGH CEILING ENCLOSURES - FRONT LEFT RIGHT - FIELD INSTALLED<br>FACTORY MOUNTED EXHAUST COLLAR(S)<br>PERFORMANCE ENHANCING LIP (PEL) TECHNOLOGY<br>STANDING SEAM CONSTRUCTION FOR SUPERIOR STRENGTH |  |  |  |  | SDR #Q9999999 - VERIFY CEILING HEIGHT |  |  |  |  |



**FIRE SYSTEM INFORMATION**

| MARK                     | MODEL                       | LOCATION                                 | FLOW POINTS                 |     | SUPPLY LINE | DETECTION    | MARK(S) PROTECTED BY FIRE SYSTEM                     |
|--------------------------|-----------------------------|--|-----------------------------|-----|-------------|--------------|--|
|                          |                             |  | HOODS                       | PCU |             |              |  |
| FIRE SUPPRESSION ITEM 16 | ANSUL R-102<br>WET CHEMICAL | CABINET – RIGHT END OF HOOD 1<br>ITEM 15 | 16 UTILIZED<br>22 AVAILABLE |     | CONTINUOUS  | FUSIBLE LINK | HOOD 1 ITEM 15 SECTION 1<br>HOOD 2 ITEM 28 SECTION 1 |

**FIRE SYSTEM OPTIONS AND ACCESSORIES**

- FULL INSTALLATION (INCLUDES PRE-PIPED HOOD(S) WITH DETECTION AND FACTORY COORDINATED INSTALL)
- CHROME SLEEVES FOR FACTORY PROVIDED APPLIANCES DROPS - INCLUDED
- METAL BLOW-OFF CAPS - INCLUDED
- GAS VALVE - INCLUDED - MECHANICAL SHUTOFF VALVE, 2", (ANSUL) - PART# ANSULMECHSHUTOFFVALVE200
- HOOD SUPPRESSION TANK - INCLUDED - 6 GAL. - [(2) 3.0 TANK(S)]
- REMOTE PULL STATION - STANDARD - FIELD INSTALLATION AT SINGLE POINT OF EGRESS

**ANSUL R102 (WET CHEMICAL) FIRE PROTECTION SYSTEM - MODEL FS5C**

**CONTROL PANEL**

**NOT TO SCALE**

**WIRING DIAGRAMS W/DPDT MICRO SWITCH**

DPDT SWITCHES PROVIDED BY MANUFACTURER MAY BE WIRED PER TYPICAL EXAMPLES SHOWN. VERIFY WITH LOCAL CODES AND EQUIPMENT SUPPLIED AS THE CONNECTION NEEDED FOR YOUR INSTALLATION.

**CONNECTION TO BUILDINGS ALARM**

**CONNECTION TO COOKING EQUIPMENT SHUT DOWN**

**CONNECTION TO FAN SHUT DOWN**

**NOTES:**

WET CHEMICAL FIRE PROTECTION SYSTEM TO BE ANSUL R-102, DESIGNED IN COMPLIANCE WITH UL 300 REQUIREMENTS.

- VERIFICATION OF ALL COOKING EQUIPMENT MAKE, MODEL AND LOCATION REQUIRED FOR ALL FIRE PROTECTION SYSTEMS.
- ALL FIRE SYSTEM PIPING IS STANDARDLY TO THE RIGHT END OF THE HOOD UNLESS A WALL IS LOCATED ON THE RIGHT END.
- ANSUL AUTOMAN RELEASE TO BE LOCATED WITHIN 60" OF HOOD.

THE BASIC FIRE SYSTEM WILL INCLUDE THE FOLLOWING:

- GAS SHUT-OFF VALVE, IF REQUIRED, TO BE SUPPLIED BY MANUFACTURER (UP TO 2" DIAMETER AS STANDARD), AND INSTALLED BY A LICENSED PLUMBER.
- MICRO SWITCH TO BE SUPPLIED BY MANUFACTURER FOR CONNECTION TO, BUT NOT LIMITED TO, BUILDING ALARM SYSTEM(S), EXHAUST AND SUPPLY FANS AND ELECTRICAL POWER SHUT DOWN. FIELD WIRING AND CONNECTIONS TO BE PERFORMED BY A LICENSED ELECTRICIAN.

THE BASIC FIRE SYSTEM DOES NOT INCLUDE THE FOLLOWING:

- FULL DUMP TEST OTHER THAN WHAT IS SPECIFIED PER THE INSTALLATION MANUAL, OR TO SATISFY A STATE OR LOCAL CODE. PERMIT AND TESTING FEES ARE NOT INCLUDED UNLESS NOTED UNDER THE EQUIPMENT SCHEDULE FOR THE FIRE SYSTEM.
- MORE THAN TWO TRIPS TO THE JOBSITE OR SPECIAL TRANSPORTATION, OR OVERNIGHT LODGING REQUIREMENTS IN REMOTE AREAS. NORMAL TRAVEL DISTANCE IS FIRST 50 MI. (80.5 KM) FROM OFFICE.
- SPECIAL CLASSES OR ADDITIONAL LABOR FOR ACCESS TO SECURITY SENSITIVE AREAS
- INSTALLATION OF GAS SHUT-OFF VALVE.
- SPECIAL DRAWINGS REQUIRED TO SATISFY STATE OR LOCAL CODE. PLAN EXAMINATION FEES, PE OR PS APPROVAL STAMP.
- UNION LABOR, GOVERNMENT LABOR, OR PREVAILING WAGES REQUIRED FOR FINAL FIELD HOOK-UP.
- ANY AND ALL ELECTRICAL COMPONENTS/CONNECTIONS REQUIRED TO SHUT DOWN FANS, SHUT OFF DEVICE FOR ELECTRIC COOKING EQUIPMENT (SHUNT TRIP BREAKER), OR ACTIVATE AN ALARM SYSTEM, ETC.
- ANY DISMANTLING OR REASSEMBLY REQUIRED TO GAIN ACCESS TO THE FIRE SUPPRESSION PIPING LOCATED ON THE TOP OF THE HOOD.
- ROUGH-IN HIDDEN CONDUIT FOR REMOTE PULL STATION OR GAS VALVE (FLUSH MOUNTED PULL STATION).
- INSTALLATION OF MORE THAN (1) REMOTE PULL STATIONS OR DISTANCES GREATER THAN 20 FT (6.1M).
- PARTS OR LABOR REQUIRED TO CORRECT PIPING DUE TO COOKING EQUIPMENT CHANGES OR DEVIATION FROM PLANS, OR ANY CHARGES FOR MISSING OR ADDITIONAL PARTS OTHER THAN THOSE INDICATED ON THE FIRE SUPPRESSION DETAIL.

DO NOT SHUT DOWN EXHAUST FANS WITH THIS METHOD OF WIRING, IF PROHIBITED BY LOCAL CODES.

**NOTES:**

1. \_\_\_\_\_ DENOTES FIELD INSTALLATION.
2. \_\_\_\_\_ DENOTES FACTORY INSTALLATION.
3. DO NOT USE BLACK WIRE OR SNAP-ACTION SWITCH IN NORMAL INSTALLATION. BLACK WIRE TO BE USED ONLY FOR EXTRANEOUS ALARM, LIGHT CIRCUITS, ETC.

PROJECT  
1/26/2023

MARK

ACCUREX W/IA  
BRAD BORCHARDT  
PHILLIP.KRAFT@ACCUREX.COM  
(262)227-7865

ACCUREX

NICOLET HIGH SCHOOL  
CULINARY - GLENDALE, WI R1

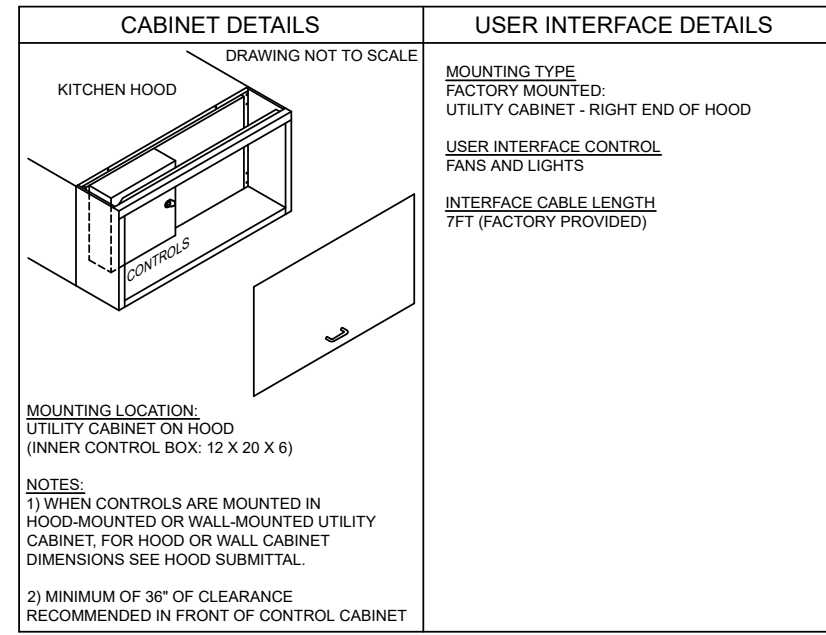
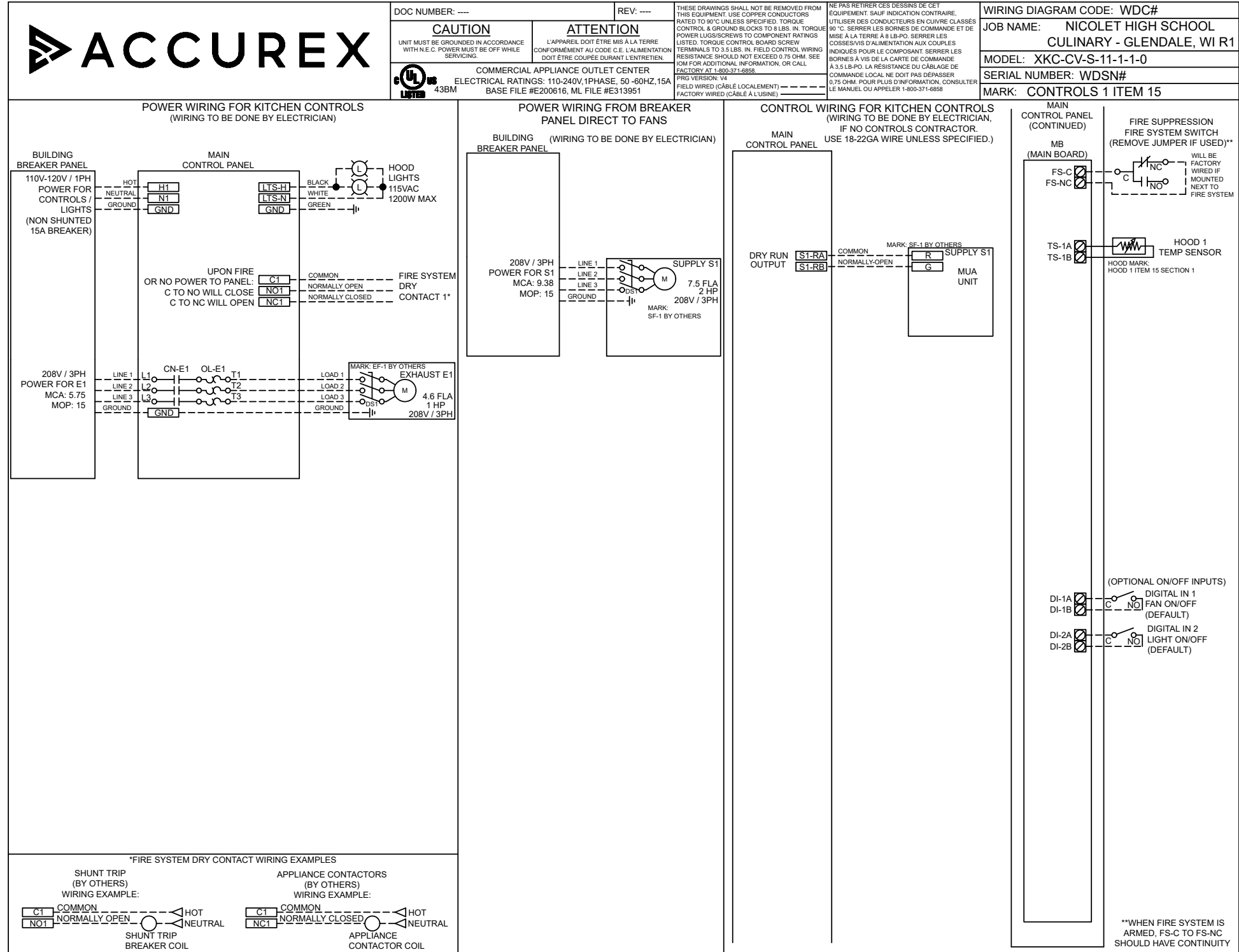
FIRE SUPPRESSION ITEM 16

CONTROL INFORMATION

| MARK               | ELECTRICAL CONTROL PACKAGE |                                 | USER INTERFACE         |   | FANS CONTROLLED |         |     |                |      |      |          |            |       |             |                        |              |
|--------------------|----------------------------|---------------------------------|------------------------|---|-----------------|---------|-----|----------------|------|------|----------|------------|-------|-------------|------------------------|--------------|
|                    | MODEL                      | LOCATION                        | TYPE                   | LOCATION                                  | FAN #           | TYPE    | FAN | FAN MARK       | ZONE | CFM  | MOTOR HP | MOTOR VOLT | CYCLE | MOTOR PHASE | MOTOR STARTER IN PANEL | VFD IN PANEL |
| CONTROLS 1 ITEM 15 | XKC-CV-S-11-1-1-0          | RIGHT CABINET ON HOOD 1 ITEM 15 | FULL COLOR TOUCHSCREEN | CABINET - RIGHT CABINET ON HOOD 1 ITEM 15 | 1               | EXHAUST | E1  | EF-1 BY OTHERS | 1    | 2025 | 1        | 208        | 60    | 3           | YES                    | NO           |
|                    |                            |                                 |                        |   | 2               | SUPPLY  | S1  | SF-1 BY OTHERS | 1    | 2025 | 2        | 208        | 60    | 3           | NO                     | NO           |

**CONTROL FEATURES**  
 HOOD LIGHT CONTROL  
 TEMP SENSORS (FACTORY INSTALLED) - QTY. 1  
 DRY FIRE CONTACTS - QTY. 1  
 LIGHTS OFF DURING FIRE  
 EXHAUST MAX DURING FIRE  
 SUPPLY OFF DURING FIRE

**SPECIAL DESIGN REQUESTS**  
 SDR #Q9999999 - VERIFY FAN INFORMATION



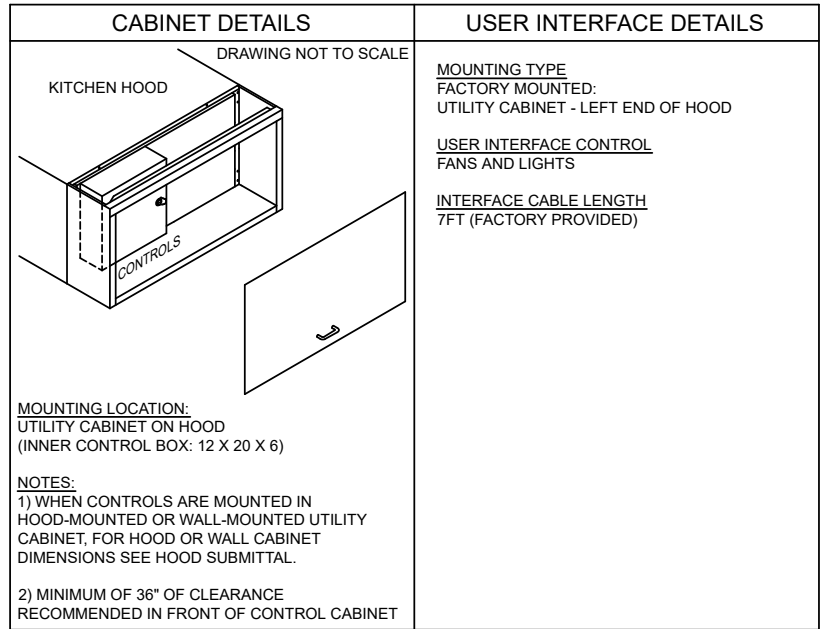
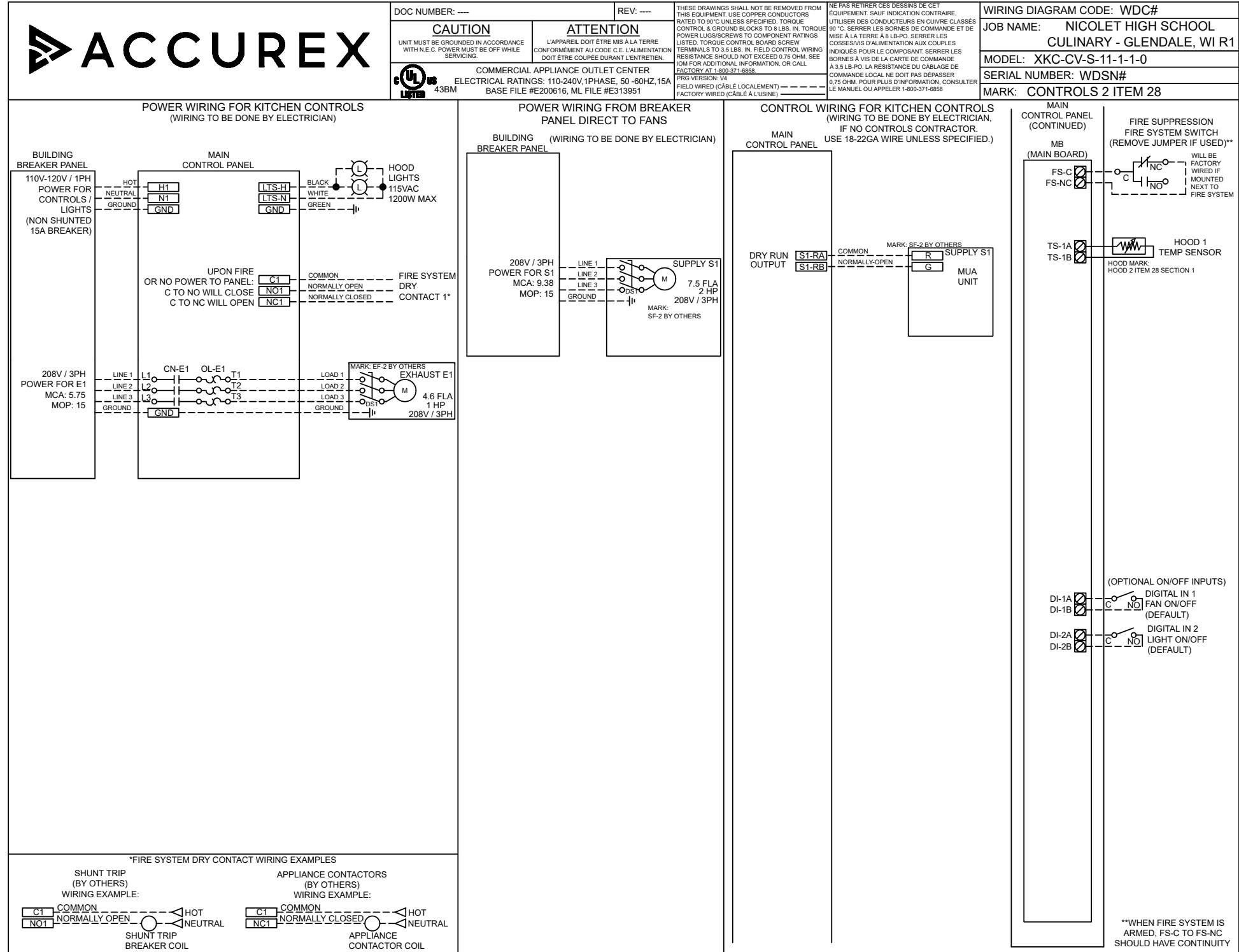
| ZONE CONFIGURATION |         |                          |                |         |         |                 | WIRING DIAGRAM CODE: WDC#   |   |          |          |         |         |   |   |      |  |  |
|--------------------|---------|--------------------------|----------------|---------|---------|-----------------|---|---|----------|----------|---------|---------|---|---|------|--|--|
| ZONE #             | ZONE    | ROOM TEMP                |                |         |         |                 | JOB NAME:   | NICOLET HIGH SCHOOL CULINARY - GLENDALE, WI R1  |          |          |         |         |   |   |      |  |  |
| 1                  | Z1      | PRESET                   |                |         |         |                 | MODEL:  | XKC-CV-S-11-1-1-0   |          |          |         |         |   |   |      |  |  |
|                    |         |                          |                |         |         |                 | SERIAL NUMBER:  | WDSN#   |          |          |         |         |   |   |      |  |  |
|                    |         |                          |                |         |         |                 | MARK:   | CONTROLS 1 ITEM 15  |          |          |         |         |   |   |      |  |  |
|                    |         |                          |                |         |         |                 | DOC NUMBER:   | ---   |          |          |         |         |   |   |      |  |  |
| HOOD CONFIGURATION |         |                          |                |         |         |                 | DEFAULT SETTINGS / PARAMÈTRES PAR DÉFAUT  |   |          |          |         |         |   |   |      |  |  |
| HOOD #             | HOOD    | HOOD MARK                | ZONE           | EXHAUST | SUPPLY  | MB-TEMP SENSORS | HC  | TYPE: CV<br>CONFIGURATION: STANDARD   |          |          |         |         |   |   |      |  |  |
| 1                  | H1      | HOOD 1 ITEM 15 SECTION 1 | Z1             | E1      | S1      | TS1             | NO  | ZONES: 1<br>HOODS: 1<br>SUMPS: 0<br>EXHAUST FANS: 1<br>SUPPLY FANS: 1<br>MB ROOM SENSOR: NO<br>MB TEMP SENSORS: 1<br>HIGH TEMP FAULT: NO<br>FREEZE PROTECTION: YES<br>GAS RESET: NO<br>FAN PROVING: NO<br>BMS: NONE |          |          |         |         |   |   |      |  |  |
|                    |         |                          |                |         |         |                 | ZONE SETTINGS<br>SEE ZONE CONFIGURATION IN TABLE ON LEFT  |   |          |          |         |         |   |   |      |  |  |
|                    |         |                          |                |         |         |                 | HOOD SETTINGS<br>SEE HOOD CONFIGURATION IN TABLE ON LEFT  |   |          |          |         |         |   |   |      |  |  |
|                    |         |                          |                |         |         |                 | EXHAUST FAN SETTINGS<br>SEE FAN CONFIGURATION IN TABLE ON LEFT  |   |          |          |         |         |   |   |      |  |  |
|                    |         |                          |                |         |         |                 | SUPPLY FAN SETTINGS<br>SEE FAN CONFIGURATION IN TABLE ON LEFT   |   |          |          |         |         |   |   |      |  |  |
|                    |         |                          |                |         |         |                 | SENSOR SETTINGS<br>SEE HOOD CONFIGURATION IN TABLE ON LEFT  |   |          |          |         |         |   |   |      |  |  |
|                    |         |                          |                |         |         |                 | USER INTERFACE SETTINGS (MB)<br>FAN & LIGHT BUTTONS: SHOW BOTH (SEPERATE)                             |   |          |          |         |         |   |   |      |  |  |
|                    |         |                          |                |         |         |                 | USER INTERFACE SETTINGS (HCB)<br>NA   |   |          |          |         |         |   |   |      |  |  |
|                    |         |                          |                |         |         |                 | GENERAL SETTINGS<br>TIME ZONE: CENTRAL DAYLIGHT (DEFAULT)   |   |          |          |         |         |   |   |      |  |  |
|                    |         |                          |                |         |         |                 | FIRE FAULT SETTINGS<br>EXHAUST DURING FIRE: MAX<br>SUPPLY DURING FIRE: OFF<br>LIGHTS DURING FIRE: OFF |   |          |          |         |         |   |   |      |  |  |
|                    |         |                          |                |         |         |                 | BMS SETTINGS<br>NA  |   |          |          |         |         |   |   |      |  |  |
|                    |         |                          |                |         |         |                 | PRG VERSION: V4   |   |          |          |         |         |   |   |      |  |  |
| FAN CONFIGURATION  |         |                          |                |         |         |                 |   |   |          |          |         |         |   |   |      |  |  |
| FAN #              | TYPE    | FAN                      | FAN MARK       | ZONE    | MIN CFM | MAX CFM         | MODBUS VFD  | VFD ADDRESS   | MIN FREQ | MAX FREQ | MIN VDC | MAX VDC |   |   |      |  |  |
| 1                  | EXHAUST | E1                       | EF-1 BY OTHERS | Z1      | -       | 2025            | NO  | -   | -        | -        | -       | -       | - | - | 10.0 |  |  |
| 2                  | SUPPLY  | S1                       | SF-1 BY OTHERS | Z1      | -       | 2025            | NO  | -   | -        | -        | -       | -       | - | - | 10.0 |  |  |

CONTROL INFORMATION

| MARK               | ELECTRICAL CONTROL PACKAGE |                                | USER INTERFACE         |  | FANS CONTROLLED |         |     |                |      |      |          |            |       |             |                        |              |
|--------------------|----------------------------|--------------------------------|------------------------|--|-----------------|---------|-----|----------------|------|------|----------|------------|-------|-------------|------------------------|--------------|
|                    | MODEL                      | LOCATION                       | TYPE                   | LOCATION                                 | FAN #           | TYPE    | FAN | FAN MARK       | ZONE | CFM  | MOTOR HP | MOTOR VOLT | CYCLE | MOTOR PHASE | MOTOR STARTER IN PANEL | VFD IN PANEL |
| CONTROLS 2 ITEM 28 | XKC-CV-S-11-1-1-0          | LEFT CABINET ON HOOD 2 ITEM 28 | FULL COLOR TOUCHSCREEN | CABINET - LEFT CABINET ON HOOD 2 ITEM 28 | 1               | EXHAUST | E1  | EF-2 BY OTHERS | 1    | 1375 | 1        | 208        | 60    | 3           | YES                    | NO           |
|                    |                            |                                |                        |  | 2               | SUPPLY  | S1  | SF-2 BY OTHERS | 1    | 1375 | 2        | 208        | 60    | 3           | NO                     | NO           |

**CONTROL FEATURES**  
 HOOD LIGHT CONTROL  
 TEMP SENSORS (FACTORY INSTALLED) - QTY. 1  
 DRY FIRE CONTACTS - QTY. 1  
 LIGHTS OFF DURING FIRE  
 EXHAUST MAX DURING FIRE  
 SUPPLY OFF DURING FIRE

**SPECIAL DESIGN REQUESTS**  
 SDR #Q9999999 - VERIFY FAN INFORMATION

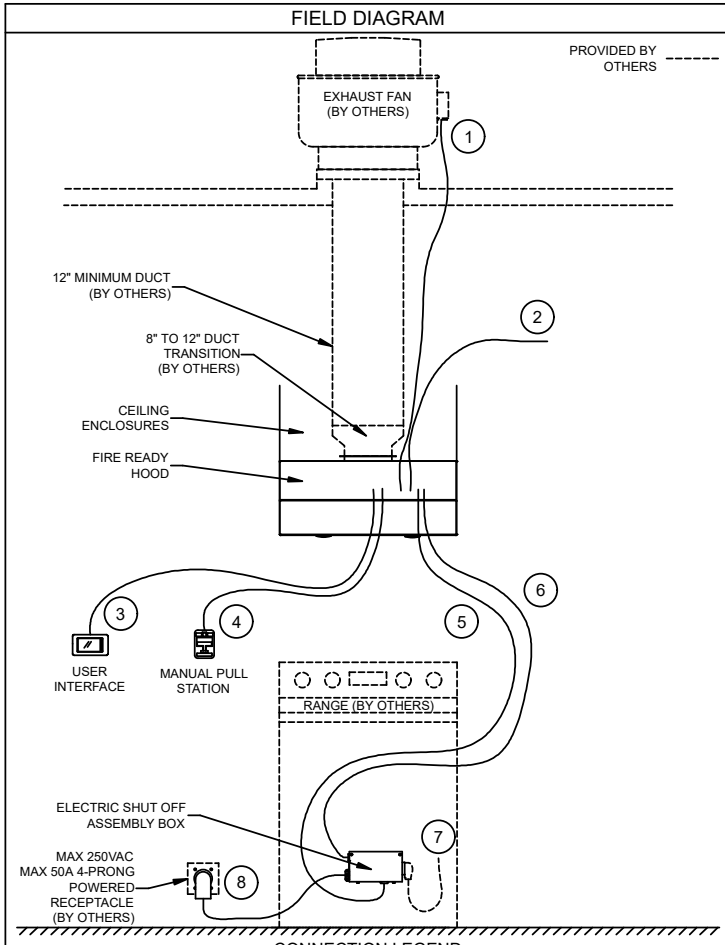


| ZONE CONFIGURATION |         |                          |                |         |         |                 | WIRING DIAGRAM CODE: WDC#                                |             |          |          |         |         |
|--------------------|---------|--------------------------|----------------|---------|---------|-----------------|--|-------------|----------|----------|---------|---------|
| ZONE #             | ZONE    | ROOM TEMP                |                |         |         |                 | JOB NAME: NICOLET HIGH SCHOOL CULINARY - GLENDALE, WI R1 |             |          |          |         |         |
| 1                  | Z1      | PRESET                   |                |         |         |                 | MODEL: XKC-CV-S-11-1-1-0                                 |             |          |          |         |         |
|                    |         |                          |                |         |         |                 | SERIAL NUMBER: WDSN#                                     |             |          |          |         |         |
|                    |         |                          |                |         |         |                 | MARK: CONTROLS 2 ITEM 28                                 |             |          |          |         |         |
|                    |         |                          |                |         |         |                 | DOC NUMBER: ---  |             |          |          |         |         |
| HOOD CONFIGURATION |         |                          |                |         |         |                 | DEFAULT SETTINGS / PARAMÈTRES PAR DÉFAUT                 |             |          |          |         |         |
| HOOD #             | HOOD    | HOOD MARK                | ZONE           | EXHAUST | SUPPLY  | MB-TEMP SENSORS | HCBS   |             |          |          |         |         |
| 1                  | H1      | HOOD 2 ITEM 28 SECTION 1 | Z1             | E1      | S1      | TS1             | NO   |             |          |          |         |         |
|                    |         |                          |                |         |         |                 | TYPE: CV   |             |          |          |         |         |
|                    |         |                          |                |         |         |                 | CONFIGURATION: STANDARD                                  |             |          |          |         |         |
|                    |         |                          |                |         |         |                 | ZONES: 1   |             |          |          |         |         |
|                    |         |                          |                |         |         |                 | HOODS: 1   |             |          |          |         |         |
|                    |         |                          |                |         |         |                 | SUMPS: 0   |             |          |          |         |         |
|                    |         |                          |                |         |         |                 | EXHAUST FANS: 1  |             |          |          |         |         |
|                    |         |                          |                |         |         |                 | SUPPLY FANS: 1   |             |          |          |         |         |
|                    |         |                          |                |         |         |                 | MB ROOM SENSOR: NO                                       |             |          |          |         |         |
|                    |         |                          |                |         |         |                 | MB TEMP SENSORS: 1                                       |             |          |          |         |         |
|                    |         |                          |                |         |         |                 | HIGH TEMP FAULT: NO                                      |             |          |          |         |         |
|                    |         |                          |                |         |         |                 | FREEZE PROTECTION: YES                                   |             |          |          |         |         |
|                    |         |                          |                |         |         |                 | GAS RESET: NO  |             |          |          |         |         |
|                    |         |                          |                |         |         |                 | FAN PROVING: NO  |             |          |          |         |         |
|                    |         |                          |                |         |         |                 | BMS: NONE  |             |          |          |         |         |
|                    |         |                          |                |         |         |                 | <b>ZONE SETTINGS</b>                                     |             |          |          |         |         |
|                    |         |                          |                |         |         |                 | SEE ZONE CONFIGURATION IN TABLE ON LEFT                  |             |          |          |         |         |
|                    |         |                          |                |         |         |                 | <b>HOOD SETTINGS</b>                                     |             |          |          |         |         |
|                    |         |                          |                |         |         |                 | SEE HOOD CONFIGURATION IN TABLE ON LEFT                  |             |          |          |         |         |
|                    |         |                          |                |         |         |                 | <b>EXHAUST FAN SETTINGS</b>                              |             |          |          |         |         |
|                    |         |                          |                |         |         |                 | SEE FAN CONFIGURATION IN TABLE ON LEFT                   |             |          |          |         |         |
|                    |         |                          |                |         |         |                 | <b>SUPPLY FAN SETTINGS</b>                               |             |          |          |         |         |
|                    |         |                          |                |         |         |                 | SEE FAN CONFIGURATION IN TABLE ON LEFT                   |             |          |          |         |         |
|                    |         |                          |                |         |         |                 | <b>SENSOR SETTINGS</b>                                   |             |          |          |         |         |
|                    |         |                          |                |         |         |                 | SEE HOOD CONFIGURATION IN TABLE ON LEFT                  |             |          |          |         |         |
|                    |         |                          |                |         |         |                 | <b>USER INTERFACE SETTINGS (MB)</b>                      |             |          |          |         |         |
|                    |         |                          |                |         |         |                 | FAN & LIGHT BUTTONS: SHOW BOTH (SEPERATE)                |             |          |          |         |         |
|                    |         |                          |                |         |         |                 | <b>USER INTERFACE SETTINGS (HCB)</b>                     |             |          |          |         |         |
|                    |         |                          |                |         |         |                 | NA   |             |          |          |         |         |
|                    |         |                          |                |         |         |                 | <b>GENERAL SETTINGS</b>                                  |             |          |          |         |         |
|                    |         |                          |                |         |         |                 | TIME ZONE: CENTRAL DAYLIGHT (DEFAULT)                    |             |          |          |         |         |
|                    |         |                          |                |         |         |                 | <b>FIRE FAULT SETTINGS</b>                               |             |          |          |         |         |
|                    |         |                          |                |         |         |                 | EXHAUST DURING FIRE: MAX                                 |             |          |          |         |         |
|                    |         |                          |                |         |         |                 | SUPPLY DURING FIRE: OFF                                  |             |          |          |         |         |
|                    |         |                          |                |         |         |                 | LIGHTS DURING FIRE: OFF                                  |             |          |          |         |         |
|                    |         |                          |                |         |         |                 | <b>BMS SETTINGS</b>                                      |             |          |          |         |         |
|                    |         |                          |                |         |         |                 | NA   |             |          |          |         |         |
|                    |         |                          |                |         |         |                 | PRG VERSION: V4  |             |          |          |         |         |
| FAN CONFIGURATION  |         |                          |                |         |         |                 |  |             |          |          |         |         |
| FAN #              | TYPE    | FAN                      | FAN MARK       | ZONE    | MIN CFM | MAX CFM         | MODBUS VFD   | VFD ADDRESS | MIN FREQ | MAX FREQ | MIN VDC | MAX VDC |
| 1                  | EXHAUST | E1                       | EF-2 BY OTHERS | Z1      | -       | 1375            | NO   | -           | -        | -        | -       | 10.0    |
| 2                  | SUPPLY  | S1                       | SF-2 BY OTHERS | Z1      | -       | 1375            | NO   | -           | -        | -        | -       | 10.0    |

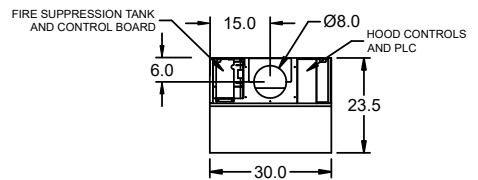
| HOOD INFORMATION |                              |       |               |                       |                      |                      |                                   |     |             | EXHAUST |            |      |                              | VENTILATION INFORMATION |    | TOTAL WEIGHT (LBS.) |
|------------------|------------------------------|-------|---------------|-----------------------|----------------------|----------------------|-----------------------------------|-----|-------------|---------|------------|------|------------------------------|-------------------------|----|---------------------|
| QTY.             | MARK                         | MODEL | CONFIGURATION | HOOD DIMENSIONS (IN.) |                      |                      | HOOD CONSTR.                      | CFM | INLET SOUND |         | COLLAR     |      | VENTILATION STYLE            | FAN TYPE                |    |                     |
|                  |                              |       |               | LENGTH                | WIDTH                | HEIGHT               |                                   |     | SONES       | DBA     | DIA. (IN.) | S.P. |                              |                         |    |                     |
| 4                | RESIDENTIAL HOOD - E ITEM 38 | XRRS  | WALL          | 30                    | TOP 12.0<br>BOT 23.5 | FRT 6.00<br>BCK 12.5 | 300 SERIES<br>SS WHERE<br>EXPOSED | 500 | 3.7         | 46.86   | 8          | 0.56 | EXTERNAL FAN - TOP DISCHARGE | OTHERS                  | 86 |                     |

| HOOD INFORMATION |                              |            |       |                     |                          |          |         |       |          | DISCONNECTS FOR APPLIANCE |  |              |   | LIGHTING DETAILS             |            | USER INTERFACE |  |
|------------------|------------------------------|------------|-------|---------------------|--------------------------|----------|---------|-------|----------|---------------------------|--|--------------|---|------------------------------|------------|----------------|--|
| QTY.             | MARK                         | HOOD POWER |       |                     |                          | ELECTRIC |         |       |          | GAS                       |  | FIXTURE TYPE |   | QTY.                         | TYPE       | LOCATION       |  |
|                  |                              | VOLT       | PHASE | BREAKER SIZE (AMPS) | OPERATING CURRENT (AMPS) | RECPT.   | VOLT    | PHASE | MAX AMPS | VALVE SIZE (IN.)          | BULB / LAMP INFO                         |              |   |                              |            |                |  |
| 4                | RESIDENTIAL HOOD - E ITEM 38 | 115        | 1     | 15                  | NA                       | 14-50R   | 208-250 | 1     | 50       |                           | 115VAC 7WATT E26 LED<br>2200-2700K COLOR |              | 2 | FULL COLOR, LCD TOUCH SCREEN | SHIP LOOSE |                |  |

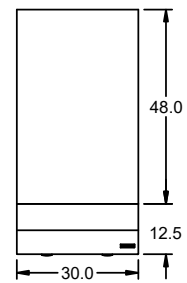
**HOOD OPTIONS/ACCESSORIES**  
 LISTED TO UL SUBJECT 300A  
 SELF-CONTAINED FIRE SUPPRESSION SYSTEM  
 ELECTRONIC DETECTION  
 FULLY PLUG AND PLAY DESIGN  
 NSF APPROVED SEALANT  
 USER INTERFACE SHIPPED LOOSE FOR ADA COMPLIANCE  
 AUTOMATIC RANGE DEACTIVATION AND PASSWORD PROTECTION  
 MANUAL PULL STATION  
 48 IN HIGH CEILING ENCLOSURES FRONT LEFT RIGHT - FIELD INSTALLED  
 FIRE SYSTEM PERMIT, STARTUP AND PUFF TEST  
 FIRE TEST KIT  
**SPECIAL COMPLIANCE TESTS**  
 SDR #Q9999999 - VERIFY CEILING HEIGHT



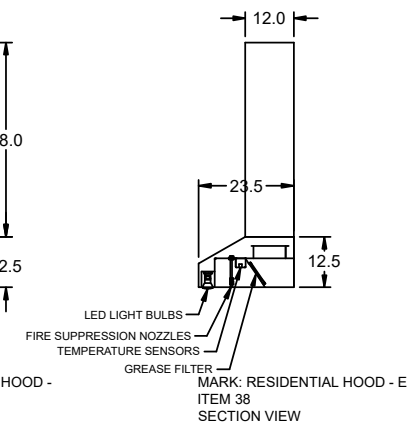
| ID | ITEM                            | ITEM DETAILS  |
|----|---------------------------------|---|
| 1  | FAN BY OTHERS                   | FIELD TO WIRE FAN BY OTHERS TO 4-PIN WIRE HARNESS LEADS, PROVIDED WITH 0-10VDC SPEED REFERENCE AND 115VAC POWER (MAX 16A RESISTIVE, MAX 0.75HP LOAD).   |
| 2  | HOOD POWER                      | FIELD TO PROVIDE 115VAC POWER FROM 15A BREAKER TO TERMINAL BLOCKS H1 AND N1 INSIDE HOOD (GROUND TO GROUNDING TERMINAL).                                 |
| 3  | SHIP LOOSE USER INTERFACE       | 10 FT PLUG AND PLAY CABLE WITH LIGHT BLUE LABEL COILED UP AND ATTACHED TO HOOD. FIELD TO CONNECT PLUG TO BACK OF USER INTERFACE INSIDE INTERFACE J-BOX. |
| 4  | MANUAL PULL STATION             | 30 FT PLUG AND PLAY CABLE COILED UP AND ATTACHED TO HOOD. FIELD TO CONNECT TO MANUAL PULL STATION VIA QUICK CONNECTOR IN STATION J-BOX.                 |
| 5  | GAS/ELECTRIC DISCONNECT CABLE 1 | 10 FT PLUG AND PLAY CABLE WITH RED LABEL COILED UP AND ATTACHED TO 9PIN CONNECTION AT HOOD. FIELD TO PLUG THIS INTO GAS/ELECTRIC SHUT OFF ASSEMBLY BOX. |
| 6  | GAS/ELECTRIC DISCONNECT CABLE 2 | 10 FT PLUG AND PLAY CABLE COILED UP AND ATTACHED TO 4PIN CONNECTION AT HOOD. FIELD TO PLUG THIS INTO GAS/ELECTRIC SHUT OFF ASSEMBLY BOX.                |
| 7  | RANGE POWER CORD                | PLUG RANGE POWER CORD (IF PROVIDED WITH RANGE) INTO 14-50R RECEPTACLE ON ELECTRIC SHUT OFF ASSEMBLY BOX.  |
| 8  | SHUT OFF ASSEMBLY BOX POWER     | PLUG 2.5 FT ELECTRIC SHUT OFF ASSEMBLY BOX POWER CORD INTO NEARBY 4-PRONG 14-50R 250VAC RECEPTACLE.   |



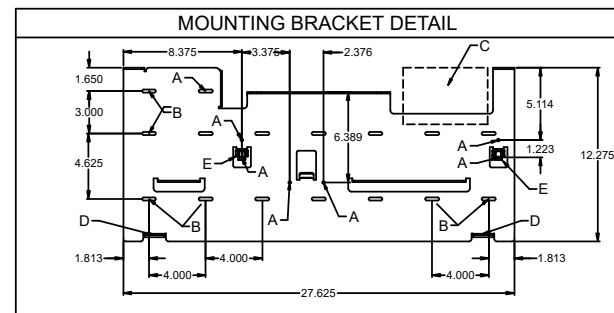
MARK: RESIDENTIAL HOOD - E ITEM 38  
PLAN VIEW



MARK: RESIDENTIAL HOOD - E ITEM 38  
ELEVATION VIEW

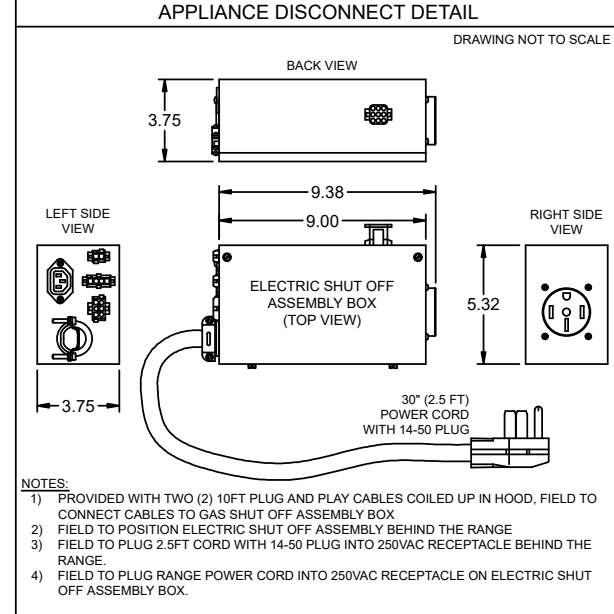
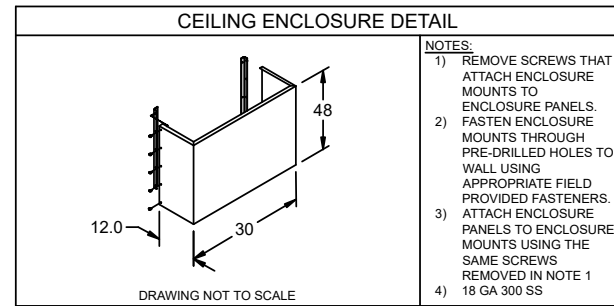
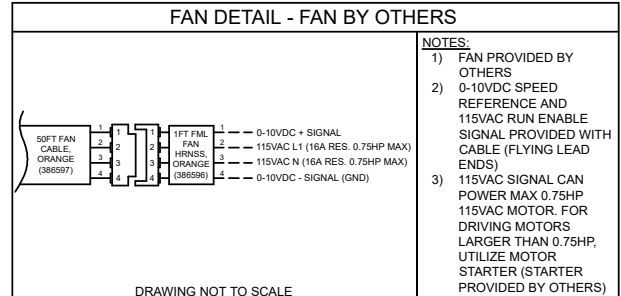
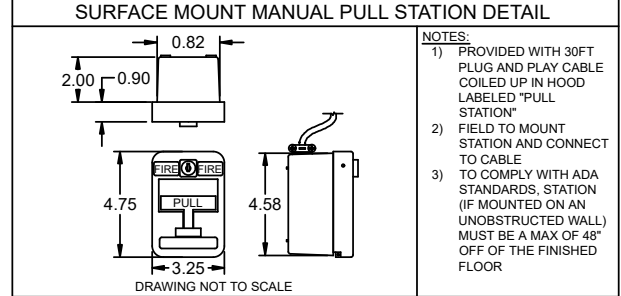
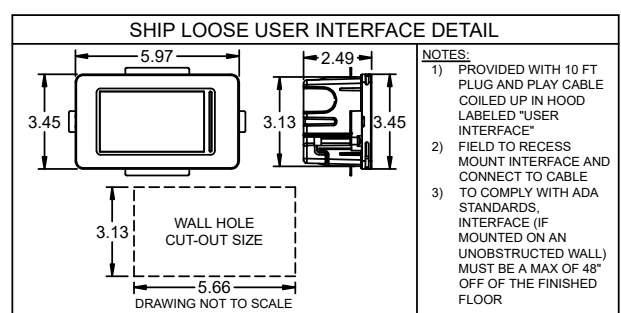


MARK: Residential Hood - E



**MOUNTING BRACKET KEY**  
 A. CRITICAL MOUNTING POINTS (MUST BE SECURED TO STUDS OR DRY WALL HANGERS)  
 B. UTILIZE ONE OF THESE TWO CRITICAL POINTS FOR SECURING TO STUD OR DRY WALL HANGERS (THREE TOTAL)  
 C. LOCATION FOR FACTORY PROVIDED 4" X 6" W X 3.5" D CONTROL J-BOX  
 D. HOOD SUPPORT TABS  
 E. HOOD LATCH CONNECTIONS

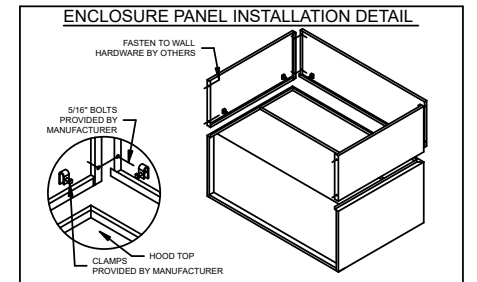
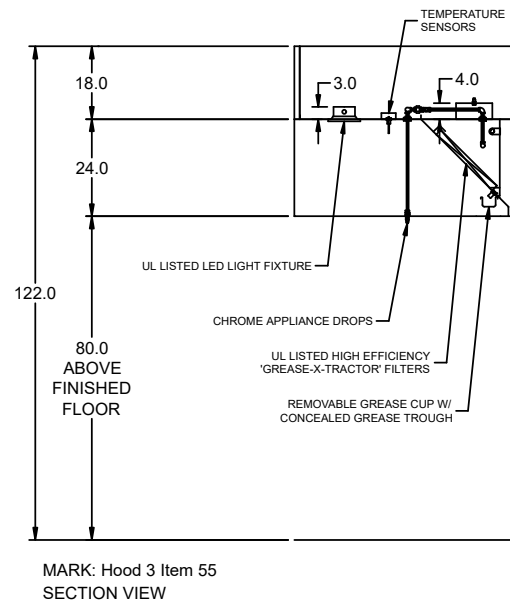
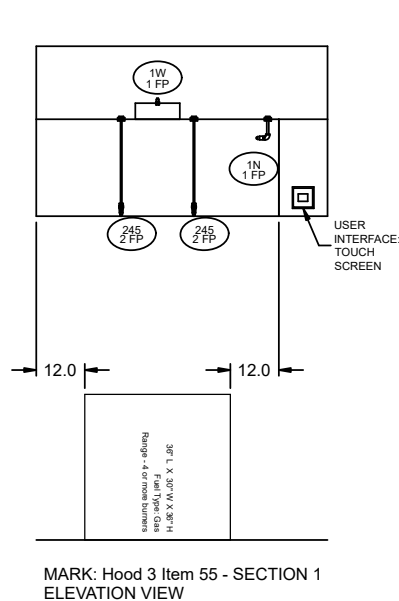
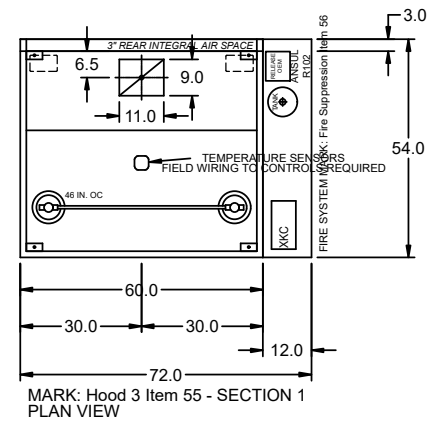
**NOTES:**  
 1) BEFORE MOUNTING, SITUATE MOUNTING BRACKET ON WALL, MAKING SURE CRITICAL MOUNTING POINTS ARE MET AND DISTANCE FROM BOTTOM OF BRACKET TO COOKING SURFACE IS BETWEEN 24 AND 30 INCHES.  
 2) CUT OUT SPACE IN WALL FOR FACTORY PROVIDED CONTROL J-BOX AND SECURE IN PLACE.  
 3) SECURE MOUNTING BRACKET TO WALL USING THE PROPER FIELD PROVIDED FASTENERS USING CRITICAL MOUNTING POINTS SHOWN ABOVE.



| HOOD INFORMATION |                |           |                       |       |        |              |                            |           |           |      |     |         |        |  |                   |                  |        |
|------------------|----------------|-----------|-----------------------|-------|--------|--------------|----------------------------|-----------|-----------|------|-----|---------|--------|--|-------------------|------------------|--------|
| HOOD NO.         | MARK           | MODEL     | HOOD DIMENSIONS (IN.) |       |        | HOOD CONSTR. | COOKING LOAD / DUTY RATING | EXHAUST   |           |      |     |         | SUPPLY |  | TOTAL WEIGHT LBS. | SECTION LOCATION |        |
|                  |                |           | LENGTH                | WIDTH | HEIGHT |              |                            | TOTAL CFM | COLLAR(S) |      |     | MUA CFM | AC CFM |  |                   |                  |        |
|                  |                |           |                       |       |        |              |                            | WIDTH     | LENGTH    | DIA. | CFM | S.P.    |        |  |                   |                  |        |
| 1                | HOOD 3 ITEM 55 | XXEW-60-S | 60                    | 54    | 24     | 300 SS 100%  | HEAVY                      | 1125      | 9         | 11   |     | 1125    | 0.585  |  |                   | 184.972          | SINGLE |

| HOOD INFORMATION |                |                               |     |              |                           |        |                |                    |             |            |          |           |             |  |  |
|------------------|----------------|-------------------------------|-----|--------------|---------------------------|--------|----------------|--------------------|-------------|------------|----------|-----------|-------------|--|--|
| HOOD NO.         | MARK           | LIGHTING DETAILS              |     |              | GREASE FILTRATION DETAILS |        |                | UTILITY CABINET(S) |             |            |          |           |             |  |  |
|                  |                | FIXTURE TYPE BULB / LAMP INFO | QTY | FOOT CANDLES | TYPE / MODEL MATERIAL     | QTY    | SIZE (IN.) L H | LOCATION           | FIRE SYSTEM |            | CONTROLS |           |             |  |  |
|                  |                |                               |     |              |                           |        |                |                    | TYPE        | SIZE       | MODEL    | INTERFACE |             |  |  |
| 1                | HOOD 3 ITEM 55 | ROUND LED                     | 2   | 72.3         | X-TRACTOR STAINLESS STEEL | 0<br>3 | 16<br>20       | 20                 | RIGHT       | ANSUL R102 | 3        | XKC       | TOUCHSCREEN |  |  |

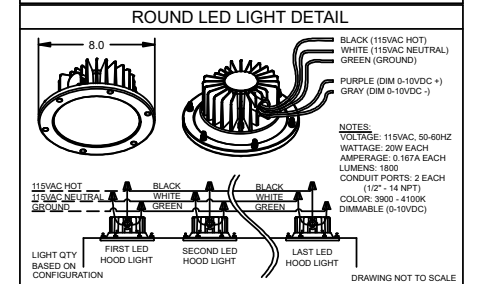
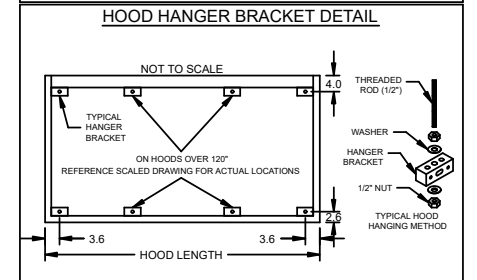
| HOOD OPTIONS   |  | SPECIAL DESIGN REQUESTS               |  |
|--|--|---------------------------------------|--|
| UL 710 LISTED W/ OUT EXHAUST FIRE DAMPER - UL #R25625              |  | SDR #Q9999999 - VERIFY CEILING HEIGHT |  |
| BACK INTEGRAL AIR SPACE - 3 IN WIDE                                |  |                                       |  |
| 18 IN HIGH CEILING ENCLOSURES - FRONT LEFT RIGHT - FIELD INSTALLED |  |                                       |  |
| FACTORY MOUNTED EXHAUST COLLAR(S)                                  |  |                                       |  |
| PERFORMANCE ENHANCING LIP (PEL) TECHNOLOGY                         |  |                                       |  |
| STANDING SEAM CONSTRUCTION FOR SUPERIOR STRENGTH                   |  |                                       |  |



**HOOD HANGING HEIGHT FOR FIRE SYSTEMS**  
 VERIFICATION OF HOOD HANGING HEIGHT ABOVE FINISHED FLOOR (A.F.F.) IS REQUIRED FOR CORRECT PLACEMENT OF FIRE SYSTEM NOZZLES.

RECOMMENDED HANGING HEIGHT = 90" FROM FINISHED FLOOR TO LOWER FRONT EDGE OF HOOD.

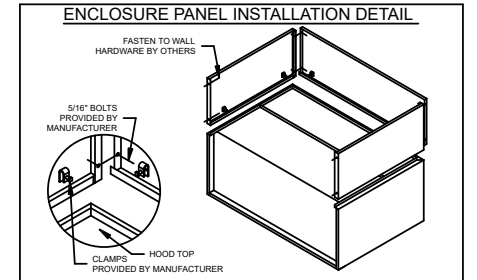
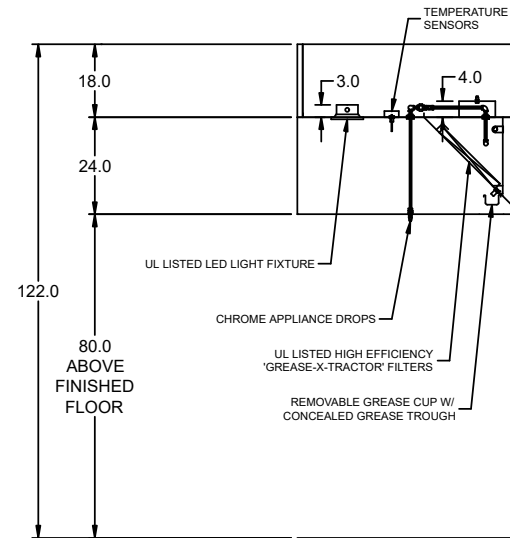
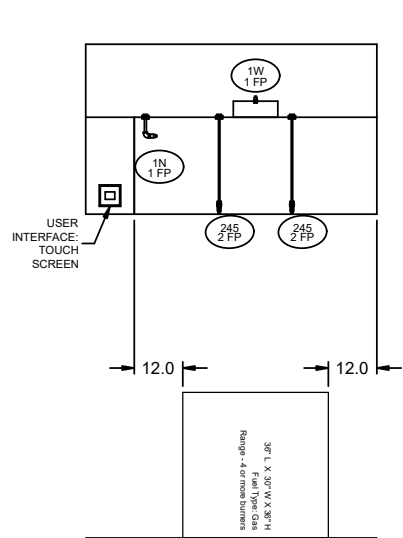
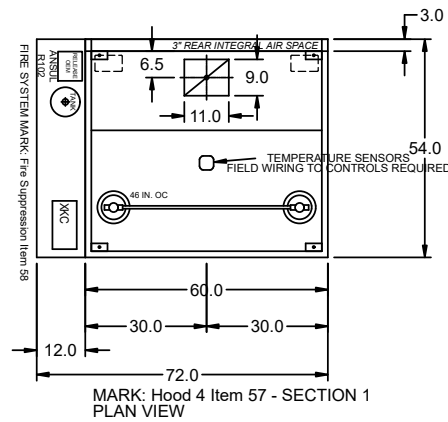
OTHER HANGING HEIGHT = \_\_\_\_\_" FROM FINISHED FLOOR TO LOWER EDGE OF HOOD.



| HOOD INFORMATION |                |           |                       |       |        |              |                            |           |           |      |     |         |        |  |                   |                  |        |
|------------------|----------------|-----------|-----------------------|-------|--------|--------------|----------------------------|-----------|-----------|------|-----|---------|--------|--|-------------------|------------------|--------|
| HOOD NO.         | MARK           | MODEL     | HOOD DIMENSIONS (IN.) |       |        | HOOD CONSTR. | COOKING LOAD / DUTY RATING | EXHAUST   |           |      |     |         | SUPPLY |  | TOTAL WEIGHT LBS. | SECTION LOCATION |        |
|                  |                |           | LENGTH                | WIDTH | HEIGHT |              |                            | TOTAL CFM | COLLAR(S) |      |     | MUA CFM | AC CFM |  |                   |                  |        |
|                  |                |           |                       |       |        |              |                            | WIDTH     | LENGTH    | DIA. | CFM | S.P.    |        |  |                   |                  |        |
| 1                | HOOD 4 ITEM 57 | XXEW-60-S | 60                    | 54    | 24     | 300 SS 100%  | HEAVY                      | 1125      | 9         | 11   |     | 1125    | 0.585  |  |                   | 184.972          | SINGLE |

| HOOD INFORMATION |                |                               |     |              |                           |     |                |                    |             |   |          |             |  |
|------------------|----------------|-------------------------------|-----|--------------|---------------------------|-----|----------------|--------------------|-------------|---|----------|-------------|--|
| HOOD NO.         | MARK           | LIGHTING DETAILS              |     |              | GREASE FILTRATION DETAILS |     |                | UTILITY CABINET(S) |             |   |          |             |  |
|                  |                | FIXTURE TYPE BULB / LAMP INFO | QTY | FOOT CANDLES | TYPE / MODEL MATERIAL     | QTY | SIZE (IN.) L H | LOCATION           | FIRE SYSTEM |   | CONTROLS |             |  |
| 1                | HOOD 4 ITEM 57 | ROUND LED                     | 2   | 72.3         | X-TRACTOR STAINLESS STEEL | 0   | 16 20          | LEFT               | ANSUL R102  | 3 | XKC      | TOUCHSCREEN |  |

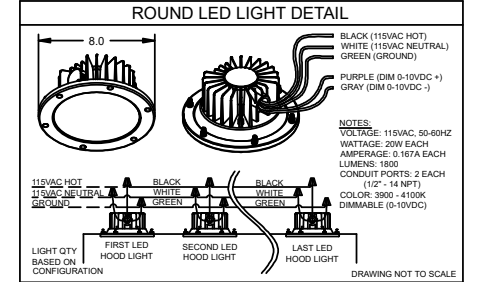
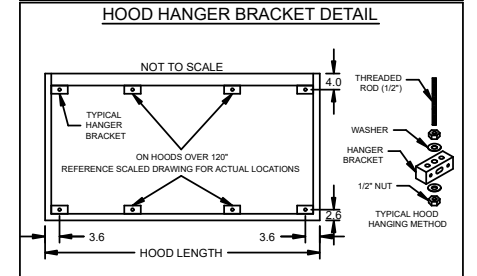
| HOOD OPTIONS   |  | SPECIAL DESIGN REQUESTS               |  |
|--|--|---------------------------------------|--|
| UL 710 LISTED W/ OUT EXHAUST FIRE DAMPER - UL #R25625              |  | SDR #Q9999999 - VERIFY CEILING HEIGHT |  |
| BACK INTEGRAL AIR SPACE - 3 IN WIDE                                |  |                                       |  |
| 18 IN HIGH CEILING ENCLOSURES - FRONT LEFT RIGHT - FIELD INSTALLED |  |                                       |  |
| FACTORY MOUNTED EXHAUST COLLAR(S)                                  |  |                                       |  |
| PERFORMANCE ENHANCING LIP (PEL) TECHNOLOGY                         |  |                                       |  |
| STANDING SEAM CONSTRUCTION FOR SUPERIOR STRENGTH                   |  |                                       |  |



**HOOD HANGING HEIGHT FOR FIRE SYSTEMS**  
 VERIFICATION OF HOOD HANGING HEIGHT ABOVE FINISHED FLOOR (A.F.F.) IS REQUIRED FOR CORRECT PLACEMENT OF FIRE SYSTEM NOZZLES.

RECOMMENDED HANGING HEIGHT = 90" FROM FINISHED FLOOR TO LOWER FRONT EDGE OF HOOD.

OTHER HANGING HEIGHT = \_\_\_\_\_" FROM FINISHED FLOOR TO LOWER EDGE OF HOOD.



CONTROL INFORMATION

| MARK               | ELECTRICAL CONTROL PACKAGE |                                 | USER INTERFACE         |   | FANS CONTROLLED |         |     |          |      |      |          |            |       |             |                        |              |
|--------------------|----------------------------|---------------------------------|------------------------|---|-----------------|---------|-----|----------|------|------|----------|------------|-------|-------------|------------------------|--------------|
|                    | MODEL                      | LOCATION                        | TYPE                   | LOCATION                                  | FAN #           | TYPE    | FAN | FAN MARK | ZONE | CFM  | MOTOR HP | MOTOR VOLT | CYCLE | MOTOR PHASE | MOTOR STARTER IN PANEL | VFD IN PANEL |
| CONTROLS 3 ITEM 55 | XKC-CV-S-10-1-1-0          | RIGHT CABINET ON HOOD 3 ITEM 55 | FULL COLOR TOUCHSCREEN | CABINET - RIGHT CABINET ON HOOD 3 ITEM 55 | 1               | EXHAUST | E1  | EF3      | 1    | 1225 | 0.75     | 115        | 60    | 1           | NO                     | NO           |

**CONTROL FEATURES**  
 HOOD LIGHT CONTROL  
 TEMP SENSORS (FACTORY INSTALLED) - QTY. 1  
 DRY FIRE CONTACTS - QTY. 1  
 LIGHTS OFF DURING FIRE  
 EXHAUST MAX DURING FIRE  
 SUPPLY OFF DURING FIRE

**SPECIAL DESIGN REQUESTS**  
 SDR #Q9999999 - VERIFY FANS



DOC NUMBER: --- REV: ---

**CAUTION**  
 UNIT MUST BE GROUNDED IN ACCORDANCE WITH N.E.C. POWER MUST BE OFF WHILE SERVICING.

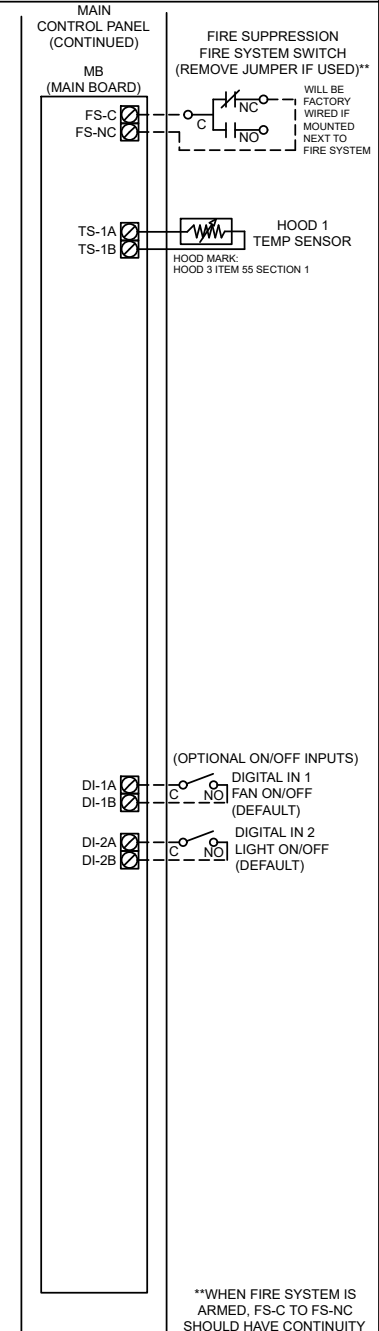
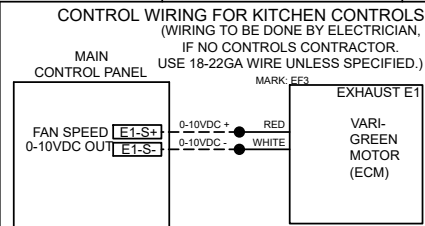
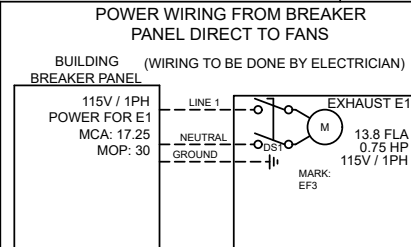
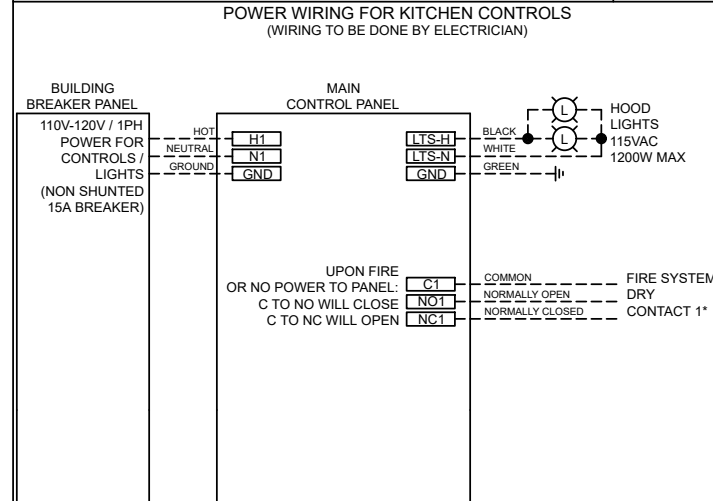
**ATTENTION**  
 L'APPAREIL DOIT ÊTRE MIS À LA TERRE CONFORMÉMENT AU CODE C.E. L'ALIMENTATION DOIT ÊTRE COUPÉE DURANT L'ENTRETIEN.

COMMERCIAL APPLIANCE OUTLET CENTER  
 ELECTRICAL RATINGS: 110-240V, 1PHASE, 50-60HZ, 15A  
 BASE FILE #E200616, ML FILE #E313951

PRG VERSION: V4  
 FIELD WIRE (CÂBLÉ À L'USINE)  
 FACTORY WIRE (CÂBLÉ À L'USINE)

NE PAS RETIRER CES DESSINS DE CET ÉQUIPEMENT SAUF INDICATION CONTRAIRE. UTILISER DES CONDUCTEURS EN CUIVRE CLASSÉS 90 °C. SERRER LES BORNES DE COMMANDE ET DE MISE À LA TERRE À 8 LB-PO. SERRER LES COSSÉS/VIS D'ALIMENTATION AUX COUPLES INDICUÉS POUR LE COMPOSANT. SERRER LES BORNES À VIS DE LA CARTE DE COMMANDE À 3.5 LB-PO. LA RÉSISTANCE DU CÂBLAGE DE COMMANDE LOCAL NE DOIT PAS DÉPASSER 0.75 OHM. POUR PLUS D'INFORMATION, CONSULTER LE MANUEL OU APPELER 1-800-371-8858.

WIRING DIAGRAM CODE: WDC#  
 JOB NAME: NICOLET HIGH SCHOOL CULINARY - GLENDALE, WI R1  
 MODEL: XKC-CV-S-10-1-1-0  
 SERIAL NUMBER: WDSN#  
 MARK: CONTROLS 3 ITEM 55



**CABINET DETAILS**  
 DRAWING NOT TO SCALE

**USER INTERFACE DETAILS**

**MOUNTING TYPE**  
 FACTORY MOUNTED:  
 UTILITY CABINET - RIGHT END OF HOOD

**USER INTERFACE CONTROL**  
 FANS AND LIGHTS

**INTERFACE CABLE LENGTH**  
 7FT (FACTORY PROVIDED)

**MOUNTING LOCATION:**  
 UTILITY CABINET ON HOOD  
 (INNER CONTROL BOX: 12 X 20 X 6)

**NOTES:**  
 1) WHEN CONTROLS ARE MOUNTED IN HOOD-MOUNTED OR WALL-MOUNTED UTILITY CABINET, FOR HOOD OR WALL CABINET DIMENSIONS SEE HOOD SUBMITTAL.  
 2) MINIMUM OF 36" OF CLEARANCE RECOMMENDED IN FRONT OF CONTROL CABINET

**ZONE CONFIGURATION**

| ZONE # | ZONE | ROOM TEMP |
|--------|------|-----------|
| 1      | Z1   | PRESET    |

**HOOD CONFIGURATION**

| HOOD # | HOOD | HOOD MARK                | ZONE | EXHAUST | SUPPLY | MB-TEMP SENSORS | HCB |
|--------|------|--------------------------|------|---------|--------|-----------------|-----|
| 1      | H1   | HOOD 3 ITEM 55 SECTION 1 | Z1   | E1      |        | TS1             | NO  |

**FAN CONFIGURATION**

| FAN # | TYPE    | FAN | FAN MARK | ZONE | MIN CFM | MAX CFM | MODBUS VFD | VFD ADDRESS | MIN FREQ | MAX FREQ | MIN VDC | MAX VDC |
|-------|---------|-----|----------|------|---------|---------|------------|-------------|----------|----------|---------|---------|
| 1     | EXHAUST | E1  | EF3      | Z1   | -       | 1225    | NO         | -           | -        | -        | -       | 10.0    |

**WIRING DIAGRAM CODE: WDC#**  
 JOB NAME: NICOLET HIGH SCHOOL CULINARY - GLENDALE, WI R1  
 MODEL: XKC-CV-S-10-1-1-0  
 SERIAL NUMBER: WDSN#  
 MARK: CONTROLS 3 ITEM 55  
 DOC NUMBER: --- REV: ---

**DEFAULT SETTINGS / PARAMÈTRES PAR DÉFAUT**

**FACTORY SETTINGS**  
 TYPE: CV  
 CONFIGURATION: STANDARD  
 ZONES: 1  
 HOODS: 1  
 SUMPS: 0  
 EXHAUST FANS: 1  
 SUPPLY FANS: 0  
 MB ROOM SENSOR: NO  
 MB TEMP SENSORS: 1  
 HIGH TEMP FAULT: NO  
 FREEZE PROTECTION: YES  
 GAS RESET: NO  
 FAN PROVING: NO  
 BMS: NONE

**ZONE SETTINGS**  
 SEE ZONE CONFIGURATION IN TABLE ON LEFT

**HOOD SETTINGS**  
 SEE HOOD CONFIGURATION IN TABLE ON LEFT

**EXHAUST FAN SETTINGS**  
 SEE FAN CONFIGURATION IN TABLE ON LEFT

**SUPPLY FAN SETTINGS**  
 SEE FAN CONFIGURATION IN TABLE ON LEFT

**SENSOR SETTINGS**  
 SEE HOOD CONFIGURATION IN TABLE ON LEFT

**USER INTERFACE SETTINGS (MB)**  
 FAN & LIGHT BUTTONS: SHOW BOTH (SEPERATE)

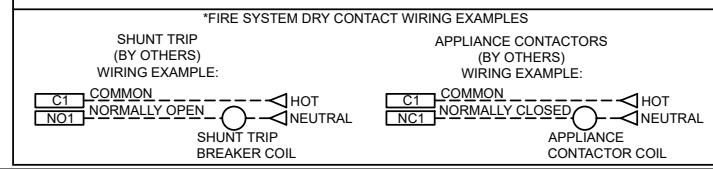
**USER INTERFACE SETTINGS (HCB)**  
 NA

**GENERAL SETTINGS**  
 TIME ZONE: CENTRAL DAYLIGHT (DEFAULT)

**FIRE/FAULT SETTINGS**  
 EXHAUST DURING FIRE: MAX  
 SUPPLY DURING FIRE: OFF  
 LIGHTS DURING FIRE: OFF

**BMS SETTINGS**  
 NA

PRG VERSION: V4



CONTROL INFORMATION

| MARK               | ELECTRICAL CONTROL PACKAGE |                                | USER INTERFACE         |  | FANS CONTROLLED |         |     |          |      |      |          |            |       |             |                        |              |
|--------------------|----------------------------|--------------------------------|------------------------|--|-----------------|---------|-----|----------|------|------|----------|------------|-------|-------------|------------------------|--------------|
|                    | MODEL                      | LOCATION                       | TYPE                   | LOCATION                                 | FAN #           | TYPE    | FAN | FAN MARK | ZONE | CFM  | MOTOR HP | MOTOR VOLT | CYCLE | MOTOR PHASE | MOTOR STARTER IN PANEL | VFD IN PANEL |
| CONTROLS 4 ITEM 57 | XKC-CV-S-10-1-1-0          | LEFT CABINET ON HOOD 4 ITEM 57 | FULL COLOR TOUCHSCREEN | CABINET - LEFT CABINET ON HOOD 4 ITEM 57 | 1               | EXHAUST | E1  | EF4      | 1    | 1125 | 0.75     | 115        | 60    | 1           | NO                     | NO           |

**CONTROL FEATURES**  
 HOOD LIGHT CONTROL  
 TEMP SENSORS (FACTORY INSTALLED) - QTY. 1  
 DRY FIRE CONTACTS - QTY. 1  
 LIGHTS OFF DURING FIRE  
 EXHAUST MAX DURING FIRE  
 SUPPLY OFF DURING FIRE

**SPECIAL DESIGN REQUESTS**  
 SDR #Q9999999 - VERIFY FAN INFO



DOC NUMBER: --- REV: ---

**CAUTION**  
 UNIT MUST BE GROUNDED IN ACCORDANCE WITH N.E.C. POWER MUST BE OFF WHILE SERVICING.

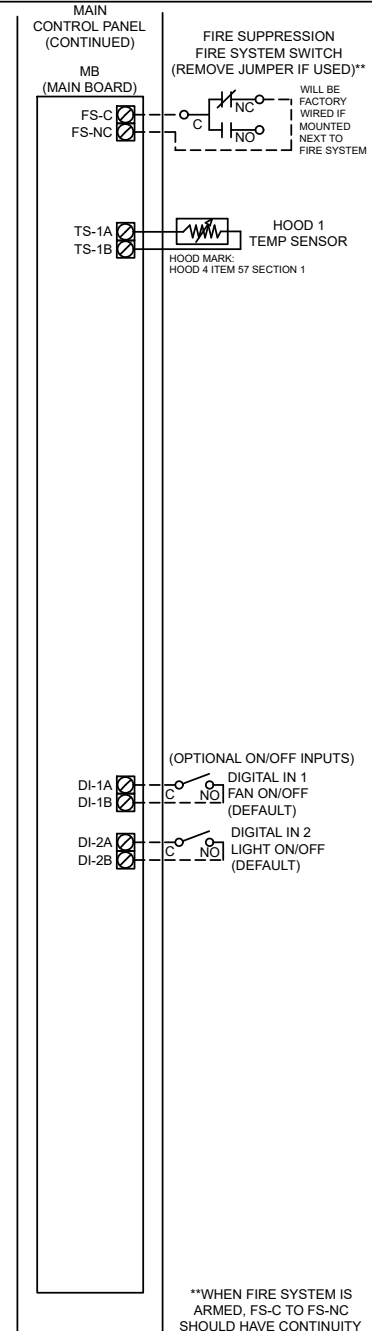
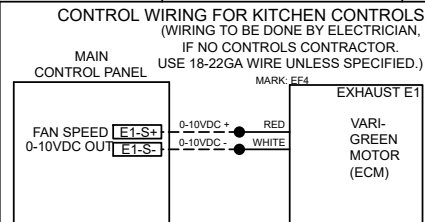
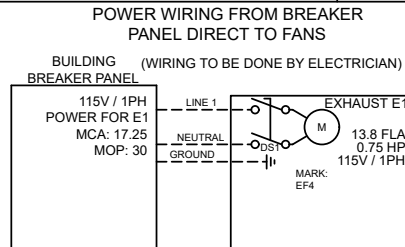
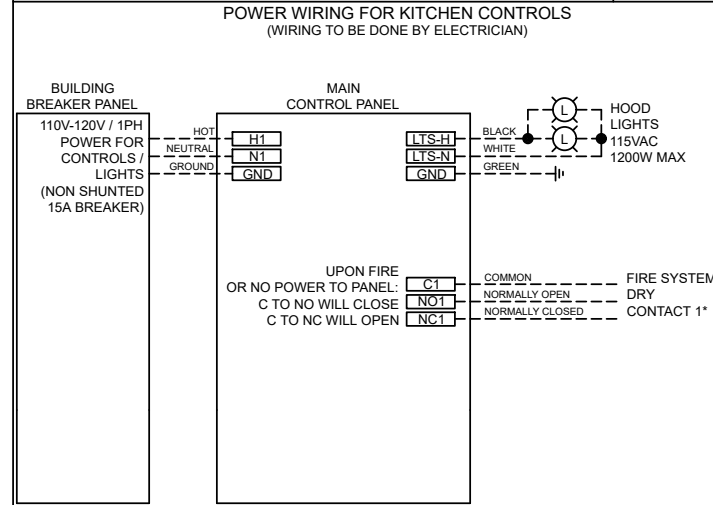
**ATTENTION**  
 L'APPAREIL DOIT ÊTRE MIS À LA TERRE CONFORMÉMENT AU CODE C.E. L'ALIMENTATION DOIT ÊTRE COUPÉE DURANT L'ENTRETIEN.

COMMERCIAL APPLIANCE OUTLET CENTER  
 ELECTRICAL RATINGS: 110-240V, 1PHASE, 50-60HZ, 15A  
 BASE FILE #E200616, ML FILE #E313951

PRG VERSION: V4  
 FIELD WIRE (CÂBLÉ À L'USINE)  
 FACTORY WIRE (CÂBLÉ À L'USINE)

NE PAS RETIRER CES DESSINS DE CET ÉQUIPEMENT SAUF INDICATION CONTRAIRE. UTILISER DES CONDUCTEURS EN CUIVRE CLASSÉS 90 °C. SERRER LES BORNES DE COMMANDE ET DE MISE À LA TERRE À 8 LB-PO. SERRER LES COSSÉS/VIS D'ALIMENTATION AUX COUPLES INDICUÉS POUR LE COMPOSANT. SERRER LES BORNES À VIS DE LA CARTE DE COMMANDE À 3.5 LB-PO. LA RÉSISTANCE DU CÂBLAGE DE COMMANDE LOCAL NE DOIT PAS DÉPASSER 0.75 OHM. POUR PLUS D'INFORMATION, CONSULTER LE MANUEL OU APPELER 1-800-371-8858.

WIRING DIAGRAM CODE: WDC#  
 JOB NAME: NICOLET HIGH SCHOOL CULINARY - GLENDALE, WI R1  
 MODEL: XKC-CV-S-10-1-1-0  
 SERIAL NUMBER: WDSN#  
 MARK: CONTROLS 4 ITEM 57



**CABINET DETAILS**  
 DRAWING NOT TO SCALE

**USER INTERFACE DETAILS**

**MOUNTING TYPE**  
 FACTORY MOUNTED:  
 UTILITY CABINET - LEFT END OF HOOD

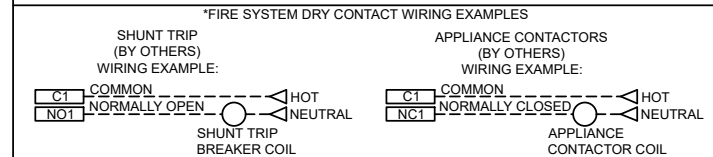
**USER INTERFACE CONTROL**  
 FANS AND LIGHTS

**INTERFACE CABLE LENGTH**  
 7FT (FACTORY PROVIDED)

**MOUNTING LOCATION:**  
 UTILITY CABINET ON HOOD  
 (INNER CONTROL BOX: 12 X 20 X 6)

**NOTES:**  
 1) WHEN CONTROLS ARE MOUNTED IN HOOD-MOUNTED OR WALL-MOUNTED UTILITY CABINET, FOR HOOD OR WALL CABINET DIMENSIONS SEE HOOD SUBMITTAL.  
 2) MINIMUM OF 36" OF CLEARANCE RECOMMENDED IN FRONT OF CONTROL CABINET

| ZONE CONFIGURATION |         |                          |          |         |         |                 | WIRING DIAGRAM CODE: WDC#   |  |          |          |         |         |  |  |  |  |  |
|--------------------|---------|--------------------------|----------|---------|---------|-----------------|---|--|----------|----------|---------|---------|--|--|--|--|--|
| ZONE #             | ZONE    | ROOM TEMP                |          |         |         |                 | JOB NAME: NICOLET HIGH SCHOOL CULINARY - GLENDALE, WI R1  |  |          |          |         |         |  |  |  |  |  |
| 1                  | Z1      | PRESET                   |          |         |         |                 | MODEL: XKC-CV-S-10-1-1-0  |  |          |          |         |         |  |  |  |  |  |
|                    |         |                          |          |         |         |                 | SERIAL NUMBER: WDSN#  |  |          |          |         |         |  |  |  |  |  |
|                    |         |                          |          |         |         |                 | MARK: CONTROLS 4 ITEM 57  |  |          |          |         |         |  |  |  |  |  |
|                    |         |                          |          |         |         |                 | DOC NUMBER: --- REV: ---  |  |          |          |         |         |  |  |  |  |  |
| HOOD CONFIGURATION |         |                          |          |         |         |                 | DEFAULT SETTINGS / PARAMÈTRES PAR DÉFAUT  |  |          |          |         |         |  |  |  |  |  |
| HOOD #             | HOOD    | HOOD MARK                | ZONE     | EXHAUST | SUPPLY  | MB-TEMP SENSORS | HC  | FACTORY SETTINGS   |          |          |         |         |  |  |  |  |  |
| 1                  | H1      | HOOD 4 ITEM 57 SECTION 1 | Z1       | E1      |         | TS1             | NO  | TYPE: CV<br>CONFIGURATION: STANDARD<br>ZONES: 1<br>HOODS: 1<br>SUMPS: 0<br>EXHAUST FANS: 1<br>SUPPLY FANS: 0<br>MB ROOM SENSOR: NO<br>MB TEMP SENSORS: 1<br>HIGH TEMP FAULT: NO<br>FREEZE PROTECTION: YES<br>GAS RESET: NO<br>FAN PROVING: NO<br>BMS: NONE |          |          |         |         |  |  |  |  |  |
|                    |         |                          |          |         |         |                 | ZONE SETTINGS<br>SEE ZONE CONFIGURATION IN TABLE ON LEFT  |  |          |          |         |         |  |  |  |  |  |
|                    |         |                          |          |         |         |                 | HOOD SETTINGS<br>SEE HOOD CONFIGURATION IN TABLE ON LEFT  |  |          |          |         |         |  |  |  |  |  |
|                    |         |                          |          |         |         |                 | EXHAUST FAN SETTINGS<br>SEE FAN CONFIGURATION IN TABLE ON LEFT  |  |          |          |         |         |  |  |  |  |  |
|                    |         |                          |          |         |         |                 | SUPPLY FAN SETTINGS<br>SEE FAN CONFIGURATION IN TABLE ON LEFT   |  |          |          |         |         |  |  |  |  |  |
|                    |         |                          |          |         |         |                 | SENSOR SETTINGS<br>SEE HOOD CONFIGURATION IN TABLE ON LEFT  |  |          |          |         |         |  |  |  |  |  |
|                    |         |                          |          |         |         |                 | USER INTERFACE SETTINGS (MB)<br>FAN & LIGHT BUTTONS: SHOW BOTH (SEPERATE)                             |  |          |          |         |         |  |  |  |  |  |
|                    |         |                          |          |         |         |                 | USER INTERFACE SETTINGS (HCB)<br>NA   |  |          |          |         |         |  |  |  |  |  |
|                    |         |                          |          |         |         |                 | GENERAL SETTINGS<br>TIME ZONE: CENTRAL DAYLIGHT (DEFAULT)   |  |          |          |         |         |  |  |  |  |  |
|                    |         |                          |          |         |         |                 | FIRE/FAULT SETTINGS<br>EXHAUST DURING FIRE: MAX<br>SUPPLY DURING FIRE: OFF<br>LIGHTS DURING FIRE: OFF |  |          |          |         |         |  |  |  |  |  |
|                    |         |                          |          |         |         |                 | BMS SETTINGS<br>NA  |  |          |          |         |         |  |  |  |  |  |
|                    |         |                          |          |         |         |                 | PRG VERSION: V4   |  |          |          |         |         |  |  |  |  |  |
| FAN CONFIGURATION  |         |                          |          |         |         |                 |   |  |          |          |         |         |  |  |  |  |  |
| FAN #              | TYPE    | FAN                      | FAN MARK | ZONE    | MIN CFM | MAX CFM         | MODBUS VFD  | VFD ADDRESS  | MIN FREQ | MAX FREQ | MIN VDC | MAX VDC |  |  |  |  |  |
| 1                  | EXHAUST | E1                       | EF4      | Z1      | -       | 1125            | NO  | -  | -        | -        | -       | 10.0    |  |  |  |  |  |



**FIRE SYSTEM INFORMATION**

| MARK                     | MODEL                       | LOCATION                                 | FLOW POINTS                |     | SUPPLY LINE | DETECTION    | MARK(S) PROTECTED BY FIRE SYSTEM |
|--------------------------|-----------------------------|--|----------------------------|-----|-------------|--------------|----------------------------------|
|                          |                             |  | HOODS                      | PCU |             |              |                                  |
| FIRE SUPPRESSION ITEM 56 | ANSUL R-102<br>WET CHEMICAL | CABINET – RIGHT END OF HOOD 3<br>ITEM 55 | 6 UTILIZED<br>11 AVAILABLE |     | CONTINUOUS  | FUSIBLE LINK | HOOD 3 ITEM 55 SECTION 1         |

**FIRE SYSTEM OPTIONS AND ACCESSORIES**

FULL INSTALLATION (INCLUDES PRE-PIPED HOOD(S) WITH DETECTION AND FACTORY COORDINATED INSTALL)  
 CHROME SLEEVES FOR FACTORY PROVIDED APPLIANCES DROPS - INCLUDED  
 METAL BLOW-OFF CAPS - INCLUDED  
 GAS VALVE - INCLUDED - MECHANICAL SHUTOFF VALVE, 1.5", (ANSUL) - PART# ANSULMECHSHUTOFFVALVE150  
 HOOD SUPPRESSION TANK - INCLUDED - 3 GAL. - [(1) 3.0 TANK(S)]  
 REMOTE PULL STATION - STANDARD - FIELD INSTALLATION AT SINGLE POINT OF EGRESS

**ANSUL R102 (WET CHEMICAL) FIRE PROTECTION SYSTEM - MODEL FS5C**

**CONTROL PANEL**

**NOT TO SCALE**

**NOTES:**

WET CHEMICAL FIRE PROTECTION SYSTEM TO BE ANSUL R-102, DESIGNED IN COMPLIANCE WITH UL 300 REQUIREMENTS.  
 -VERIFICATION OF ALL COOKING EQUIPMENT MAKE, MODEL AND LOCATION REQUIRED FOR ALL FIRE PROTECTION SYSTEMS.  
 -ALL FIRE SYSTEM PIPING IS STANDARDLY TO THE RIGHT END OF THE HOOD UNLESS A WALL IS LOCATED ON THE RIGHT END.  
 -ANSUL AUTOMAN RELEASE TO BE LOCATED WITHIN 60" OF HOOD.

THE BASIC FIRE SYSTEM WILL INCLUDE THE FOLLOWING:  
 -GAS SHUT-OFF VALVE, IF REQUIRED, TO BE SUPPLIED BY MANUFACTURER (UP TO 2" DIAMETER AS STANDARD), AND INSTALLED BY A LICENSED PLUMBER.  
 -MICRO SWITCH TO BE SUPPLIED BY MANUFACTURER FOR CONNECTION TO, BUT NOT LIMITED TO, BUILDING ALARM SYSTEM(S), EXHAUST AND SUPPLY FANS AND ELECTRICAL POWER SHUT DOWN. FIELD WIRING AND CONNECTIONS TO BE PERFORMED BY A LICENSED ELECTRICIAN.

THE BASIC FIRE SYSTEM DOES NOT INCLUDE THE FOLLOWING:  
 -FULL DUMP TEST OTHER THAN WHAT IS SPECIFIED PER THE INSTALLATION MANUAL, OR TO SATISFY A STATE OR LOCAL CODE. PERMIT AND TESTING FEES ARE NOT INCLUDED UNLESS NOTED UNDER THE EQUIPMENT SCHEDULE FOR THE FIRE SYSTEM.  
 -MORE THAN TWO TRIPS TO THE JOBSITE OR SPECIAL TRANSPORTATION, OR OVERNIGHT LODGING REQUIREMENTS IN REMOTE AREAS. NORMAL TRAVEL DISTANCE IS FIRST 50 MI. (80.5 KM) FROM OFFICE.  
 -SPECIAL CLASSES OR ADDITIONAL LABOR FOR ACCESS TO SECURITY SENSITIVE AREAS  
 -INSTALLATION OF GAS SHUT-OFF VALVE.  
 -SPECIAL DRAWINGS REQUIRED TO SATISFY STATE OR LOCAL CODE. PLAN EXAMINATION FEES, PE OR PS APPROVAL STAMP.  
 -UNION LABOR, GOVERNMENT LABOR, OR PREVAILING WAGES REQUIRED FOR FINAL FIELD HOOK-UP.  
 -ANY AND ALL ELECTRICAL COMPONENTS/CONNECTIONS REQUIRED TO SHUT DOWN FANS, SHUT OFF DEVICE FOR ELECTRIC COOKING EQUIPMENT (SHUNT TRIP BREAKER), OR ACTIVATE AN ALARM SYSTEM, ETC.  
 -ANY DISMANTLING OR REASSEMBLY REQUIRED TO GAIN ACCESS TO THE FIRE SUPPRESSION PIPING LOCATED ON THE TOP OF THE HOOD.  
 -ROUGH-IN HIDDEN CONDUIT FOR REMOTE PULL STATION OR GAS VALVE (FLUSH MOUNTED PULL STATION).  
 -INSTALLATION OF MORE THAN (1) REMOTE PULL STATIONS OR DISTANCES GREATER THAN 20 FT (6.1M).  
 -PARTS OR LABOR REQUIRED TO CORRECT PIPING DUE TO COOKING EQUIPMENT CHANGES OR DEVIATION FROM PLANS, OR ANY CHARGES FOR MISSING OR ADDITIONAL PARTS OTHER THAN THOSE INDICATED ON THE FIRE SUPPRESSION DETAIL.

**WIRING DIAGRAMS W/DPDT MICRO SWITCH**

DPDT SWITCHES PROVIDED BY MANUFACTURER MAY BE WIRED PER TYPICAL EXAMPLES SHOWN, VERIFY WITH LOCAL CODES AND EQUIPMENT SUPPLIED AS THE CONNECTION NEEDED FOR YOUR INSTALLATION.

**CONNECTION TO BUILDINGS ALARM**

**CONNECTION TO COOKING EQUIPMENT SHUT DOWN**

**CONNECTION TO FAN SHUT DOWN**

**NOTES:**

1. \_\_\_\_\_ DENOTES FIELD INSTALLATION.  
 2. \_\_\_\_\_ DENOTES FACTORY INSTALLATION.  
 3. DO NOT USE BLACK WIRE OR SNAP-ACTION SWITCH IN NORMAL INSTALLATION. BLACK WIRE TO BE USED ONLY FOR EXTRANEOUS ALARM, LIGHT CIRCUITS, ETC.

PROJECT  
1/26/2023

MARK

ACCUREX W/IA  
BRAD BORCHARDT  
PHILLIP.KRAFT@ACCUREX.COM  
(262)227-7865

NICOLET HIGH SCHOOL  
CULINARY - GLENDALE, WI R1

FIRE SUPPRESSION ITEM 56

**FIRE SYSTEM INFORMATION**

| MARK                     | MODEL                       | LOCATION                                | FLOW POINTS                |     | SUPPLY LINE | DETECTION    | MARK(S) PROTECTED BY FIRE SYSTEM |
|--------------------------|-----------------------------|---|----------------------------|-----|-------------|--------------|----------------------------------|
|                          |                             |   | HOODS                      | PCU |             |              |                                  |
| FIRE SUPPRESSION ITEM 58 | ANSUL R-102<br>WET CHEMICAL | CABINET – LEFT END OF HOOD 4<br>ITEM 57 | 6 UTILIZED<br>11 AVAILABLE |     | CONTINUOUS  | FUSIBLE LINK | HOOD 4 ITEM 57 SECTION 1         |

**FIRE SYSTEM OPTIONS AND ACCESSORIES**

FULL INSTALLATION (INCLUDES PRE-PIPED HOOD(S) WITH DETECTION AND FACTORY COORDINATED INSTALL)  
 CHROME SLEEVES FOR FACTORY PROVIDED APPLIANCES DROPS - INCLUDED  
 METAL BLOW-OFF CAPS - INCLUDED  
 GAS VALVE - INCLUDED - MECHANICAL SHUTOFF VALVE, 1.5", (ANSUL) - PART# ANSULMECHSHUTOFFVALVE150  
 HOOD SUPPRESSION TANK - INCLUDED - 3 GAL. - [(1) 3.0 TANK(S)]  
 REMOTE PULL STATION - STANDARD - FIELD INSTALLATION AT SINGLE POINT OF EGRESS

**ANSUL R102 (WET CHEMICAL) FIRE PROTECTION SYSTEM - MODEL FS5C**

**CONTROL PANEL**

**NOT TO SCALE**

**NOTES:**

WET CHEMICAL FIRE PROTECTION SYSTEM TO BE ANSUL R-102, DESIGNED IN COMPLIANCE WITH UL 300 REQUIREMENTS.  
 -VERIFICATION OF ALL COOKING EQUIPMENT MAKE, MODEL AND LOCATION REQUIRED FOR ALL FIRE PROTECTION SYSTEMS.  
 -ALL FIRE SYSTEM PIPING IS STANDARDLY TO THE RIGHT END OF THE HOOD UNLESS A WALL IS LOCATED ON THE RIGHT END.  
 -ANSUL AUTOMAN RELEASE TO BE LOCATED WITHIN 60" OF HOOD.

THE BASIC FIRE SYSTEM WILL INCLUDE THE FOLLOWING:  
 -GAS SHUT-OFF VALVE, IF REQUIRED, TO BE SUPPLIED BY MANUFACTURER (UP TO 2" DIAMETER AS STANDARD), AND INSTALLED BY A LICENSED PLUMBER.  
 -MICRO SWITCH TO BE SUPPLIED BY MANUFACTURER FOR CONNECTION TO, BUT NOT LIMITED TO, BUILDING ALARM SYSTEM(S), EXHAUST AND SUPPLY FANS AND ELECTRICAL POWER SHUT DOWN. FIELD WIRING AND CONNECTIONS TO BE PERFORMED BY A LICENSED ELECTRICIAN.

THE BASIC FIRE SYSTEM DOES NOT INCLUDE THE FOLLOWING:  
 -FULL DUMP TEST OTHER THAN WHAT IS SPECIFIED PER THE INSTALLATION MANUAL, OR TO SATISFY A STATE OR LOCAL CODE. PERMIT AND TESTING FEES ARE NOT INCLUDED UNLESS NOTED UNDER THE EQUIPMENT SCHEDULE FOR THE FIRE SYSTEM.  
 -MORE THAN TWO TRIPS TO THE JOBSITE OR SPECIAL TRANSPORTATION, OR OVERNIGHT LODGING REQUIREMENTS IN REMOTE AREAS. NORMAL TRAVEL DISTANCE IS FIRST 50 MI. (80.5 KM) FROM OFFICE.  
 -SPECIAL CLASSES OR ADDITIONAL LABOR FOR ACCESS TO SECURITY SENSITIVE AREAS  
 -INSTALLATION OF GAS SHUT-OFF VALVE.  
 -SPECIAL DRAWINGS REQUIRED TO SATISFY STATE OR LOCAL CODE. PLAN EXAMINATION FEES, PE OR PS APPROVAL STAMP.  
 -UNION LABOR, GOVERNMENT LABOR, OR PREVAILING WAGES REQUIRED FOR FINAL FIELD HOOK-UP.  
 -ANY AND ALL ELECTRICAL COMPONENTS/CONNECTIONS REQUIRED TO SHUT DOWN FANS, SHUT OFF DEVICE FOR ELECTRIC COOKING EQUIPMENT (SHUNT TRIP BREAKER), OR ACTIVATE AN ALARM SYSTEM, ETC.  
 -ANY DISMANTLING OR REASSEMBLY REQUIRED TO GAIN ACCESS TO THE FIRE SUPPRESSION PIPING LOCATED ON THE TOP OF THE HOOD.  
 -ROUGH-IN HIDDEN CONDUIT FOR REMOTE PULL STATION OR GAS VALVE (FLUSH MOUNTED PULL STATION).  
 -INSTALLATION OF MORE THAN (1) REMOTE PULL STATIONS OR DISTANCES GREATER THAN 20 FT (6.1M).  
 -PARTS OR LABOR REQUIRED TO CORRECT PIPING DUE TO COOKING EQUIPMENT CHANGES OR DEVIATION FROM PLANS, OR ANY CHARGES FOR MISSING OR ADDITIONAL PARTS OTHER THAN THOSE INDICATED ON THE FIRE SUPPRESSION DETAIL.

**WIRING DIAGRAMS W/DPDT MICRO SWITCH**

DPDT SWITCHES PROVIDED BY MANUFACTURER MAY BE WIRED PER TYPICAL EXAMPLES SHOWN, VERIFY WITH LOCAL CODES AND EQUIPMENT SUPPLIED AS THE CONNECTION NEEDED FOR YOUR INSTALLATION.

**CONNECTION TO BUILDINGS ALARM**

**CONNECTION TO COOKING EQUIPMENT SHUT DOWN**

**CONNECTION TO FAN SHUT DOWN**

**NOTES:**

1. \_\_\_\_\_ DENOTES FIELD INSTALLATION.  
 2. \_\_\_\_\_ DENOTES FACTORY INSTALLATION.  
 3. DO NOT USE BLACK WIRE OR SNAP-ACTION SWITCH IN NORMAL INSTALLATION. BLACK WIRE TO BE USED ONLY FOR EXTRANEOUS ALARM, LIGHT CIRCUITS, ETC.

PROJECT  
1/26/2023

MARK

ACCUREX W/IA  
BRAD BORCHARDT  
PHILLIP.KRAFT@ACCUREX.COM  
(262)227-7865

NICOLET HIGH SCHOOL  
CULINARY - GLENDALE, WI R1

FIRE SUPPRESSION ITEM 58