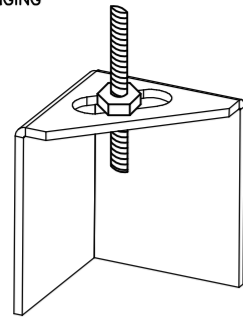


ND-2 HANGING ANGLE DETAIL

1/2" DIA. ALL THREAD ROD CONNECTED TO ROOF JOIST THROUGH ANOTHER HANGING ANGLE
 1/2" DIA. HEAVY DUTY NUT ONE ABOVE AND ONE BELOW HANGING ANGLE



*ROD AND NUTS TO BE SUPPLIED BY INSTALLING CONTRACTOR
 HANGING ANGLE IS PRE-FINISHED AT FACTORY

HANGING ANGLE LOCATIONS

HOOD STYLE	DIM FROM REAR	DIM FROM FRONT (24" H)	DIM FROM FRONT (30" H)
CANOPY ND2	4.166"	2.246"	2.246"
ND2--PSP--F	4.166"	2.246"	2.246"
BACKSHELF BD-2	4.166"	2.246"	-
VHB/VHB-G	36"x36"	42"x42"	48"x48"
FRONT/BACK DIMS BY SIZE	2.246"	2.246"	2.246"

CALCULATIONS UTILIZED

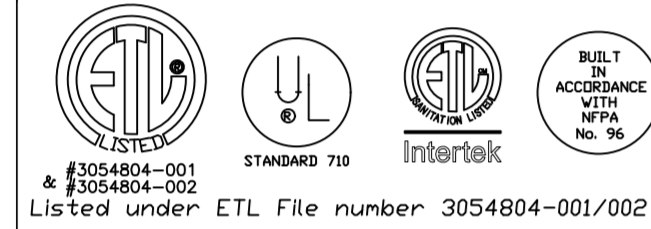
EXHAUST CFM=LENGTH OF HOOD X CFM/LIN.FT. (LOAD)
 SUPPLY CFM=EXHAUST CFM X PERCENTAGE REQUIRED

$$\text{DUCT LENGTH} = \frac{\text{TOTAL DUCT AREA} \times 144 \times \text{CFM}}{\text{DUCT DEPTH} \times \text{FPM}^2}$$

*CAPTIVE-AIRE DUCT CONNECTION SIZES ARE CALCULATED USING AN EXHAUST VELOCITY OF 1500-1800 FPM AND A SUPPLY VELOCITY OF 300-400 FPM

BUILDING CODES

CAPTIVE-AIRE HOODS ARE BUILT IN COMPLIANCE WITH:



Listed under ETL File number 3054804-001/002

CLEARANCE TO COMBUSTIBLES

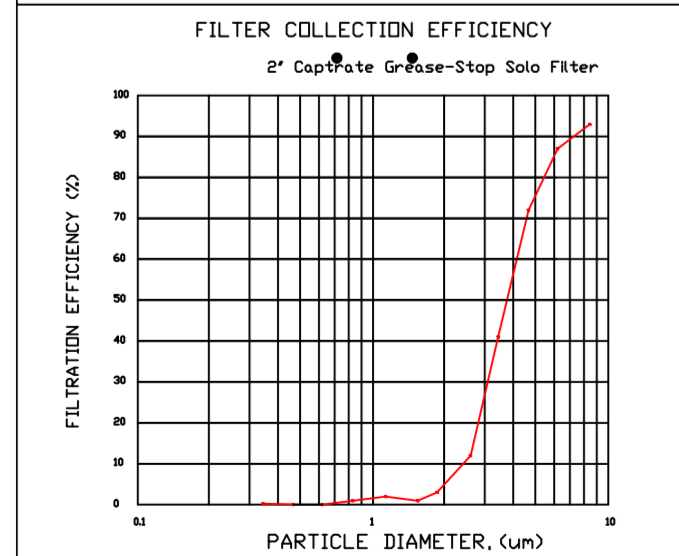
CAPTIVE-AIRE HOODS HAVE OPTIONAL CLEARANCE REDUCTION SYSTEMS AVAILABLE AS FOLLOWS:

MATERIAL	CLEARANCE REDUCTION SYSTEM
NON-COMBUSTIBLE	NONE REQUIRED
LIMITED-COMBUSTIBLE	3" UNINSULATED STANDOFF
COMBUSTIBLE	1" INSULATED STANDOFF

GENERAL NOTES

- INSTALLATION**
- ALL ELECTRICAL "FIELD" CONNECTIONS AND RELATED INTERCONNECTIONS BY ELECTRICAL CONTRACTORS.
 - ALL PLUMBING "FIELD" CONNECTIONS AND RELATED INTERCONNECTIONS BY PLUMBING CONTRACTORS.
 - HANGING BRACKETS LOCATED AND WELDED AS SHOWN ON PLANS. ALL OTHER HANGER MATERIALS PROVIDED BY INSTALLING CONTRACTORS.
 - ALL CONNECTIONS FROM CAPTIVE-AIRE DUCT PER MECHANICAL CONTRACTORS' PLANS.
 - COOKING EQUIPMENT TO SHUTOFF IN EVENT OF FIRE.
 - EXHAUST FANS TO TURN ON IN EVENT OF FIRE.
 - ALL LIGHTS FIXTURE SHOWN INSTALLED BY CAPTIVE-AIRE ARE FACTORY PREWIRED. INTERCONNECTIONS BETWEEN HOODS AND TO SWITCHES BY ELECTRICAL CONTRACTORS.
 - LAMPS FOR LIGHT FIXTURES BY INSTALLING CONTRACTORS.
 - SEISMIC RESTRAINTS ARE RESPONSIBILITY OF INSTALLING CONTRACTOR.
 - INSTALLING CONTRACTORS ASSUME ALL RELATED RESPONSIBILITY FOR VERIFICATION OF DIMENSIONAL DATA CONTAINED ON THESE DOCUMENTS FOR ACCURACY, INTEGRATION, AND ADMINISTRATION OF CODE REQUIREMENTS IN EFFECT PRIOR TO ANY RELEASE FOR PRODUCTION OF EQUIPMENT SHOWN.
- BALANCE**
- KITCHEN HOODS MUST BE BALANCED WITH KITCHEN.
 - KITCHEN SHALL BE NEGATIVE WITH RESPECT TO DINING AREA.
 - RESTAURANT SHALL BE POSITIVE WITH RESPECT TO AMBIENT PRESSURE.
- ADDITIONAL**
- WRITTEN HOOD DIMENSIONS HAVE PRECEDENCE OVER SCALE.
 - SIGNED AND "APPROVED" COPIES OF THIS DOCUMENT MUST BE RECEIVED BY THE FACTORY PRIOR TO COMMENCEMENT OF FABRICATION.

FILTER DETAIL



CaptiveAire Captrate Solo Filter
 ETL Listed Grease Extracting Filter
 Made From 430 Stainless Steel

FOR QUESTIONS, CALL THE:
 KANSAS CITY REGIONAL OFFICE
 1126 SWIFT STREET, KANSAS CITY, MO 64116
 PHONE: (816) 221-8575
 FAX: (816) 221-8311

CUSTOMER APPROVAL TO MANUFACTURE:

Approved as Noted
 Approved with NO Exception Taken
 Revise and Resubmit

SIGNATURE _____
 Your Title _____ Date _____

***** NOTE *****
 ALL WALLS AND STRUCTURES THAT COME WITHIN 18' OF HOOD MUST BE METAL STUDS AND SHEETROCK. WOOD STUDS OR ANY OTHER COMBUSTIBLE MATERIAL WITHIN 18' OF HOOD IS NOT ALLOWED.

***** NOTE *****
 HOOD MANUFACTURER RECOMMENDS NO RETURNS OR 4-WAY DIFFUSERS WITHIN 10 FEET OF HOOD IN ALL DIRECTION.

***** NOTE *****
 MAKEUP AIR SHALL BE DELIVERED INTO SPACE IN MANNER THAT WILL NOT DISRUPT HOODS ABILITY TO CAPTURE AND CONTAIN.

FOR QUESTIONS, CALL THE
 Air Solutions
 REGION 120
 PHONE: (513) 860-5555
 EMAIL: reg120@captiveaire.com

REVISIONS

DESCRIPTION	DATE:

www.captiveaire.com
 Air Solutions
 1329 East Kemper Rd., Ste. 4210, Cincinnati, OH, 45246
 PHONE: (513) 860-5555
 EMAIL: reg120@captiveaire.com

Freddy's - Georgia
 4245 US-78,
 LAGRANGE, GA, 30241

DATE: 9/28/2022

DWG.#:
 5188729

DRAWN BY:

SCALE:
 3/4" = 1'-0"

MASTER DRAWING

SHEET NO.
 1

HOOD INFORMATION - JOB#5188729

HOOD NO	TAG	MODEL	MANUFACTURER	LENGTH	MAX COOKING TEMP	TYPE	APPLIANCE DUTY	DESIGN CFM/FT	TOTAL EXH CFM	EXHAUST PLENUM RISER(S)					HOOD CONSTRUCTION	HOOD CONFIG			
										WIDTH	LENG	HEIGHT	DIA	CFM		VEL	SP	END TO END	ROW
1	GRIDDLE HD	5424 ND-2	CAPTIVEAIRE	8' 6"	450 DEG	I	MEDIUM	200	1700			4'	14'	1700	1590	-0.828"	430 SS WHERE EXPOSED	ALONE	FRONT
2	FRY HD	5424 ND-2	CAPTIVEAIRE	5' 0"	450 DEG	I	MEDIUM	155	775			4'	10'	775	1421	-0.436"	430 SS WHERE EXPOSED	ALONE	ALONE
3	DISH HD	4224 VHB-G	CAPTIVEAIRE	3' 6"	700 DEG	II	N/A	150	525			4'	10'	525	963	-0.069"	304 SS 100%	ALONE	ALONE

HOOD INFORMATION

HOOD NO	TAG	FILTER(S)				LIGHT(S)				UTILITY CABINET(S)				FIRE SYSTEM PIPING	HOOD HANGING WEIGHT		
		TYPE	QTY	HEIGHT	LENGTH	EFFICIENCY @ 7 MICRONS	QTY	TYPE	WIRE GUARD	LOCATION	SIZE	TYPE	SIZE			ELECTRICAL MODEL #	SWITCHES QUANTITY
1	GRIDDLE HD	CAPTRATE SOLO FILTER	6	16"	16"	85% SEE FILTER SPEC	3	RECESSED ROUND	NO	LEFT	12"x54"x24"			DCV-2011	1 LIGHT 1 FAN	NO	531 LBS
2	FRY HD	CAPTRATE SOLO FILTER	3	16"	16"	85% SEE FILTER SPEC	2	RECESSED ROUND	NO							NO	342 LBS
3	DISH HD						0									NO	161 LBS

HOOD OPTIONS

HOOD NO	TAG	OPTION
1	GRIDDLE HD	FIELD WRAPPER 18.00" HIGH FRONT, LEFT, RIGHT.
		LEFT QUARTER END PANEL 23" TOP WIDTH, 0" BOTTOM WIDTH, 23" HIGH 430 SS.
		RIGHT QUARTER END PANEL 23" TOP WIDTH, 0" BOTTOM WIDTH, 23" HIGH 430 SS.
		RISER SENSOR INSTALL 3IN DBL.
2	FRY HD	FIELD WRAPPER 18.00" HIGH FRONT, LEFT, RIGHT.
		LEFT QUARTER END PANEL 23" TOP WIDTH, 0" BOTTOM WIDTH, 23" HIGH 430 SS.
		RISER SENSOR INSTALL 3IN DBL.
		RIGHT VERTICAL END PANEL 27" TOP WIDTH, 21" BOTTOM WIDTH, 80" HIGH INSULATED 430 SS.
3	DISH HD	FIELD WRAPPER 18.00" HIGH FRONT, LEFT, RIGHT.

GREASE DUCT & CHIMNEY SPECIFICATIONS:
 PROVIDE GREASE DUCT EQUAL TO CAPTIVEAIRE SYSTEMS MODEL "DW" ROUND 20 GAUGE 430 STAINLESS STEEL DUCTWORK. MODEL "DW" IS LISTED TO UL-1978 AND IS INSTALLED USING "V" CLAMP LOCKING CONNECTIONS SEALED WITH 3M FIRE BARRIER 2000 PLUS. MODEL "DW" DOES NOT REQUIRE WELDING PROVIDING IT HAS BEEN INSTALLED PER THE MANUFACTURES INSTALLATION GUIDE.
 PROVIDE RATED ACCESS DOORS AT EVERY CHANGE IN DIRECTION AND EVERY 12' ON CENTER. PER MANUFACTURES LISTING MODEL "DW" HORIZONTAL RUNS LESS THAN 75 FT. CAN BE SLOPED 1/16" PER 12", HORIZONTAL RUNS MORE THAN 75 FT. CAN BE SLOPED 3/16" PER 12". DUCT SHOULD BE SLOPED AS MUCH AS POSSIBLE TO REDUCE THE CHANCE OF GREASE ACCUMULATION IN HORIZONTAL RUNS.
 IF THE DUCT OR CHIMNEY IS WITHIN 18 INCHES OF COMBUSTIBLE MATERIAL, PROVIDE UL-2221 OR UL-103 HT LISTED DOUBLE WALL GREASE DUCT OR DOUBLE WALL CHIMNEY EQUAL TO CAPTIVEAIRE SYSTEMS MODEL "DW- 2R, 2R TYPE HT, 3R, OR 3Z" ROUND 20 GAUGE 430 STAINLESS INNER DUCT INSULATED WITH A 24 GAUGE 430 STAINLESS OUTER SHELL.

CAPTIVEAIRE SYSTEMS RECOMMENDS THE USE OF LISTED, PRE-FABRICATED ROUND GREASE EXHAUST DUCT TO REDUCE STATIC PRESSURE IN THE SYSTEM, MINIMIZE INSTALLATION AND INSPECTION TIMES, AND ENSURE DUCT IS LIQUID TIGHT

HVAC DISTRIBUTION NOTE
 HIGH VELOCITY DIFFUSERS OR HVAC RETURNS SHOULD NOT BE PLACED WITHIN TEN (10) FEET OF THE EXHAUST HOOD. PERFORATED DIFFUSERS ARE RECOMMENDED.

VERIFY CEILING HEIGHT
 _____' - _____"
 HEIGHT REQUIRED TO VERIFY THAT HOOD FITS SPACE AND TO SIZE THE ENCLOSURE PANELS

CUSTOMER APPROVAL TO MANUFACTURE:

APPROVED AS NOTED	<input type="checkbox"/>
APPROVED WITH NO EXCEPTION TAKEN	<input type="checkbox"/>
REVISE AND RESUBMIT	<input type="checkbox"/>
SIGNATURE _____	
YOUR TITLE _____	DATE _____

SPECIFICATION: CAPTRATE® GREASE-STOP® SOLO FILTER

THE CAPTRATE GREASE-STOP SOLO FILTER IS A SINGLE-STAGE FILTER FEATURING A UNIQUE S-BAFFLE DESIGN IN CONJUNCTION WITH A SLOTTED REAR BAFFLE DESIGN, TO DELIVER EXCEPTIONAL FILTRATION EFFICIENCY.

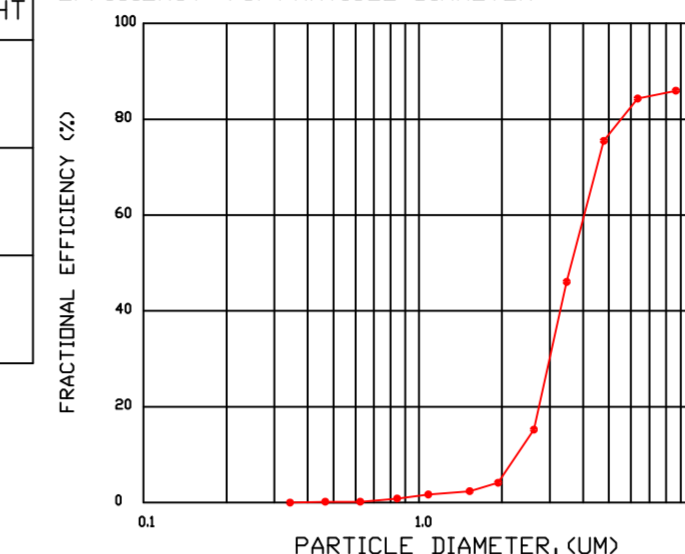
FILTER IS STAINLESS STEEL CONSTRUCTION, AND SIZED TO FIT INTO STANDARD 2-INCH DEEP HOOD CHANNEL(S).

UNITS SHALL INCLUDE STAINLESS STEEL HANDLES AND A FASTENING DEVICE TO SECURE THE TWO COMPONENTS WHEN ASSEMBLED.

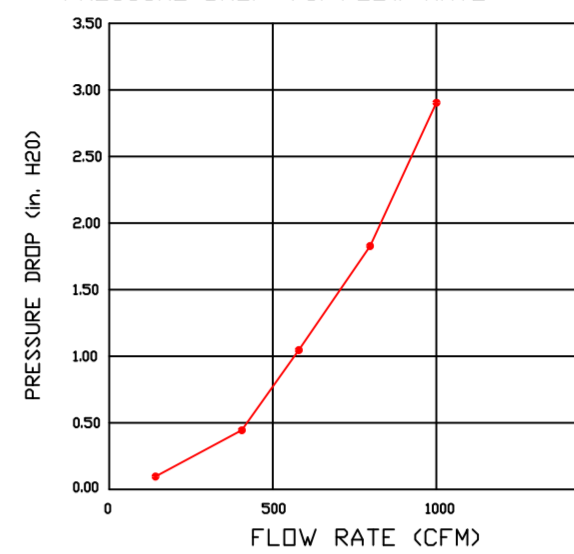
GREASE EXTRACTION EFFICIENCY PERFORMANCE SHALL REMOVE AT LEAST 75% OF GREASE PARTICLES FIVE MICRONS IN SIZE, AND 85% GREASE PARTICLES SEVEN MICRONS IN SIZE AND LARGER, WITH A CORRESPONDING PRESSURE DROP NOT TO EXCEED 1.0 INCHES OF WATER GAUGE.

THE CAPTRATE GREASE-STOP SOLO WAS TESTED TO ASTM STANDARD ASTM F2519-05. MANUFACTURER APPROVED FOR USE IN SOLID FUEL APPLICATIONS AS A SPARK ARRESTER.

EFFICIENCY VS. PARTICLE DIAMETER



PRESSURE DROP VS. FLOW RATE

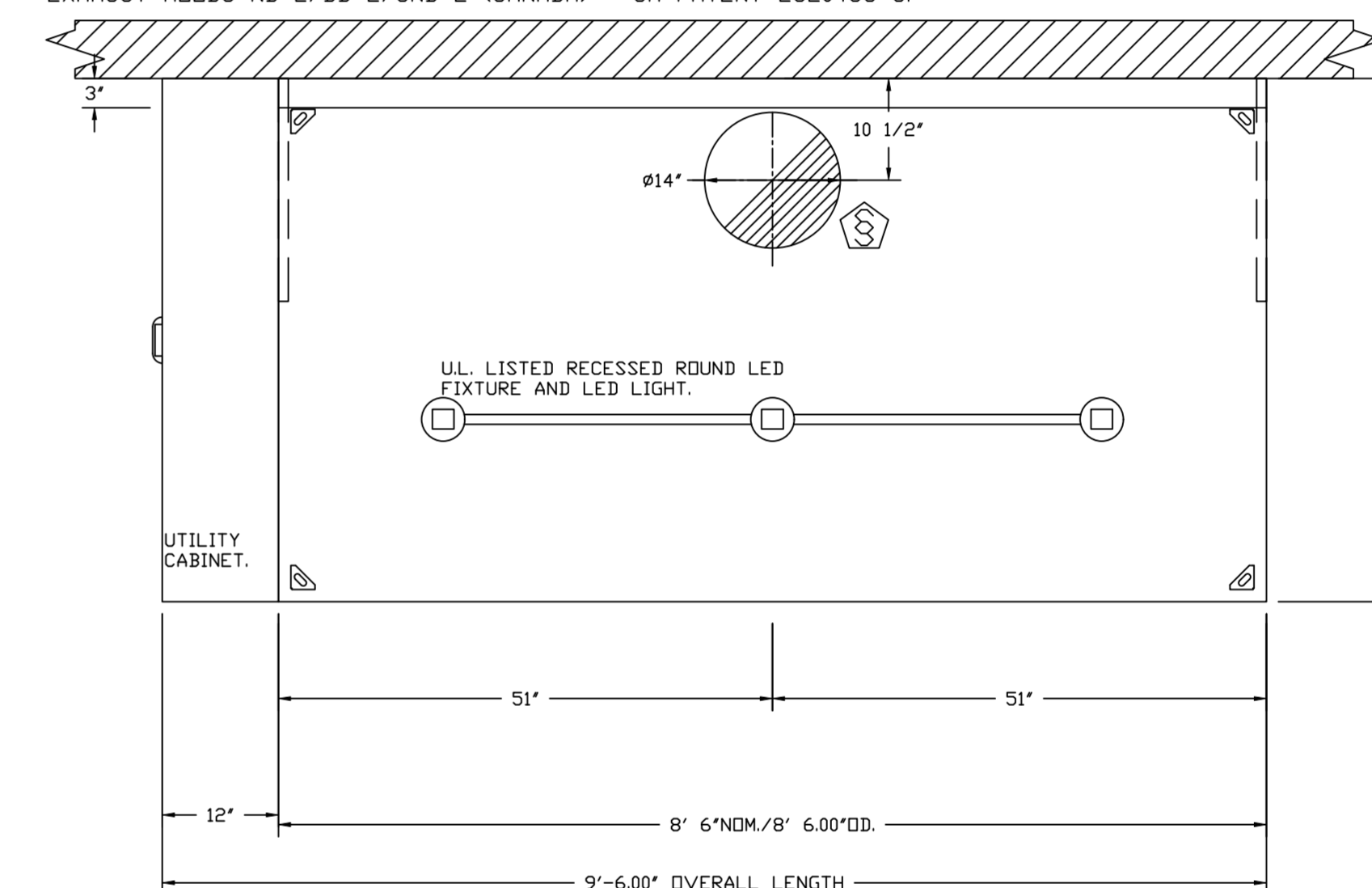


CAPTRATE FILTERS ARE BUILT IN COMPLIANCE WITH:
 NFPA #96.
 NSF STANDARD #2.
 UL STANDARD #1046.
 INT. MECH. CODE (IMC).
 ULC-S649.

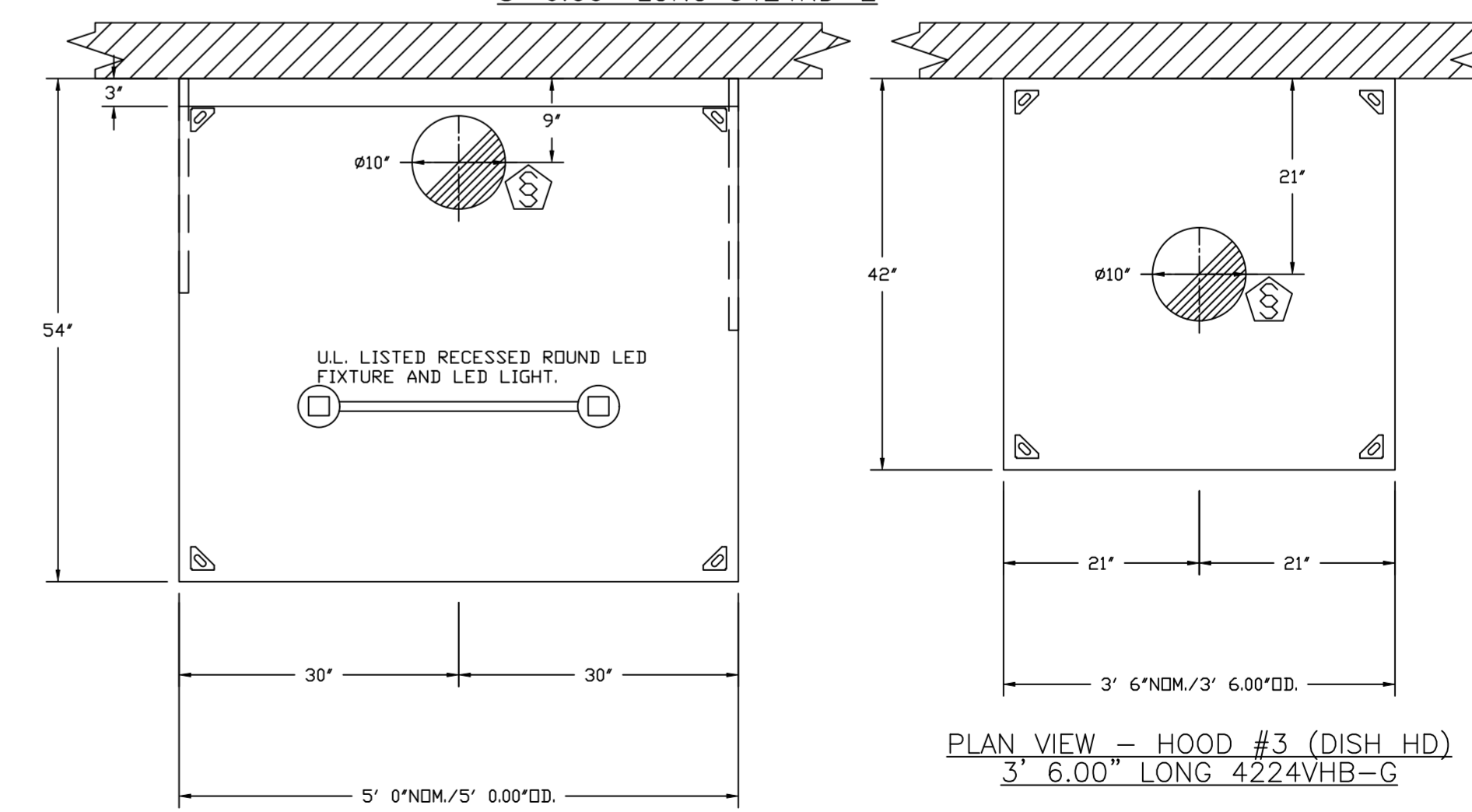


PATENT NUMBERS

EXHAUST HOODS ND-2/BD-2/SND-2 (CANADA) - CA PATENT 2520435 C.



PLAN VIEW - HOOD #1 (GRIDDLE HD)
 8' 6.00" LONG 5424ND-2



PLAN VIEW - HOOD #2 (FRY HD)
 5' 0.00" LONG 5424ND-2

PLAN VIEW - HOOD #3 (DISH HD)
 3' 6.00" LONG 4224VHB-G

REVISIONS

DESCRIPTION	DATE

CAPTIVEAIRE
 Air Solutions
 www.captiveaire.com
 1329 East Kemper Rd., Ste. 4210, Cincinnati, OH, 45246 PHONE: (513) 860-5555 EMAIL: reg120@captiveaire.com

Freddy's - Georgia
 4245 US-78,
 LAGRANGE, GA, 30241

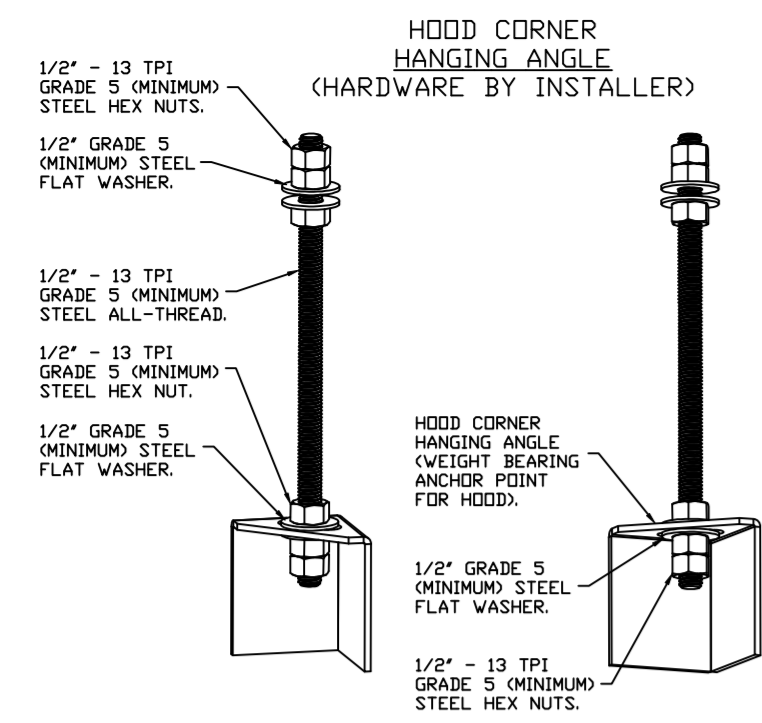
DATE: 9/28/2022
 DWG.#:
 5188729

DRAWN BY:

SCALE:
 3/4" = 1'-0"

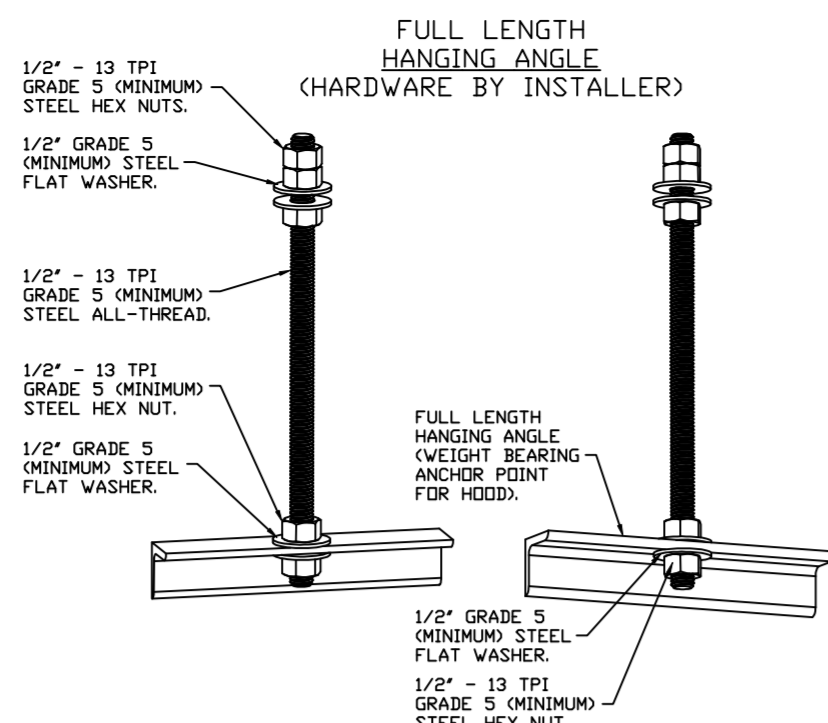
MASTER DRAWING

SHEET NO.
 2



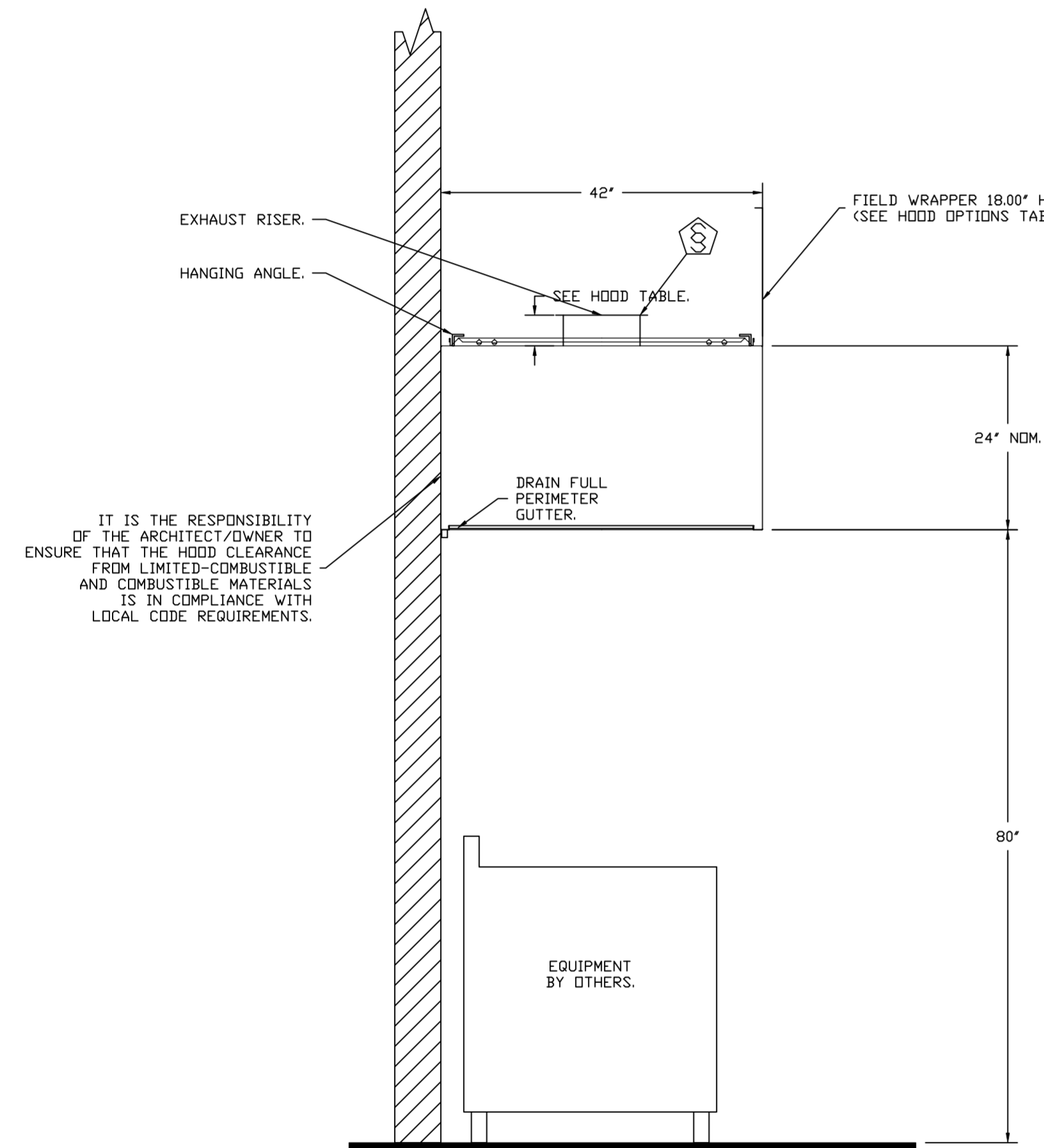
ASSEMBLY INSTRUCTIONS

HANGING ANGLE MUST BE SUPPORTED WITH 1/2" - 13 TPI GRADE 5 (MINIMUM) ALL-THREAD. SANDWICH HANGING ANGLES AND CEILING ANCHOR POINTS WITH 1/2" GRADE 5 (MINIMUM) STEEL FLAT WASHERS AND 1/2" - 13 TPI GRADE 5 (MINIMUM) HEX NUTS AS SHOWN. MUST USE DOUBLED HEX NUT CONFIGURATION BENEATH HOOD HANGING ANGLES AND ABOVE CEILING ANCHORS. MAINTAIN 1/4" OF EXPOSED THREADS BENEATH BOTTOM HEX NUT. TORQUE ALL HEX NUTS TO 57 FT-LBS.

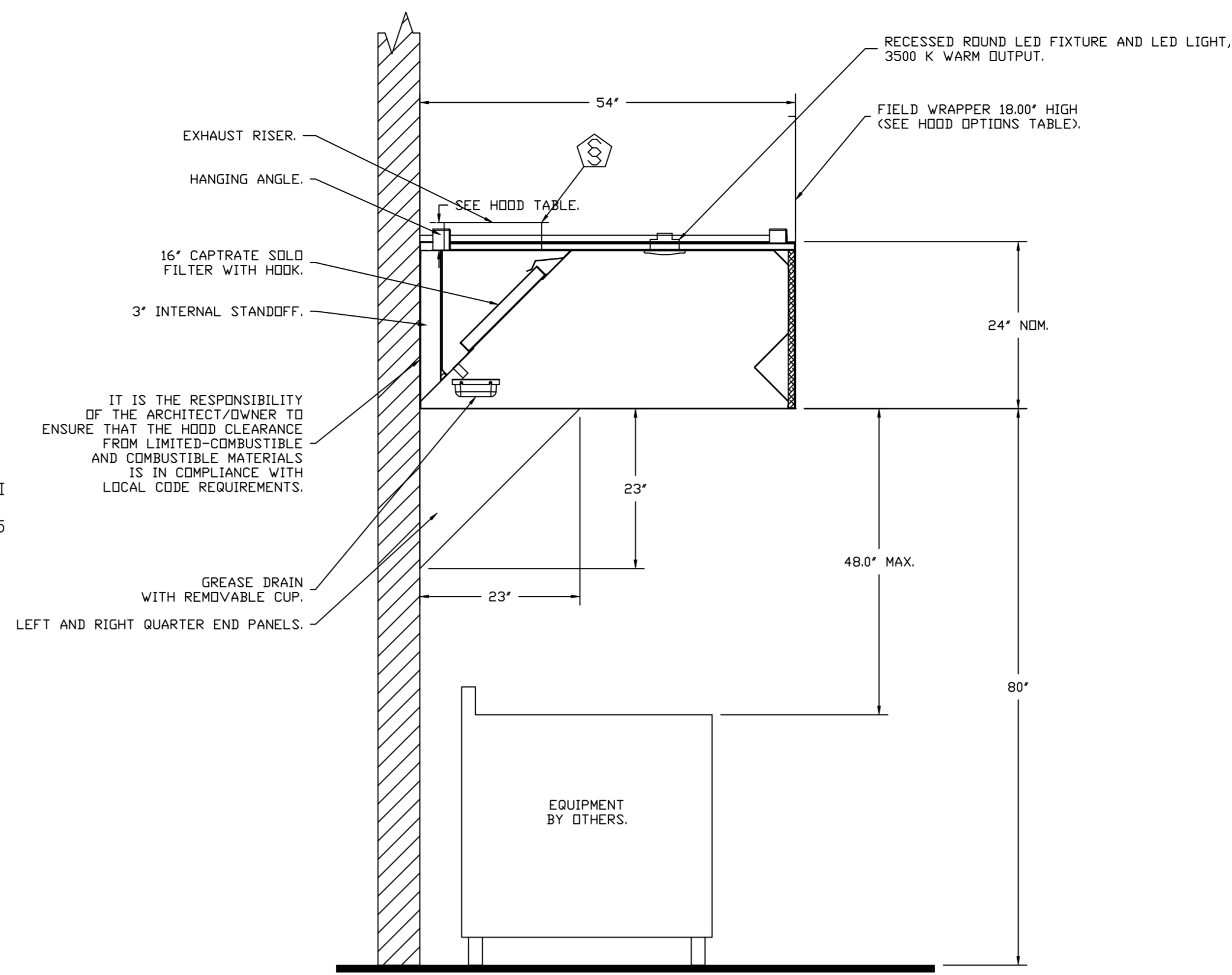


ASSEMBLY INSTRUCTIONS

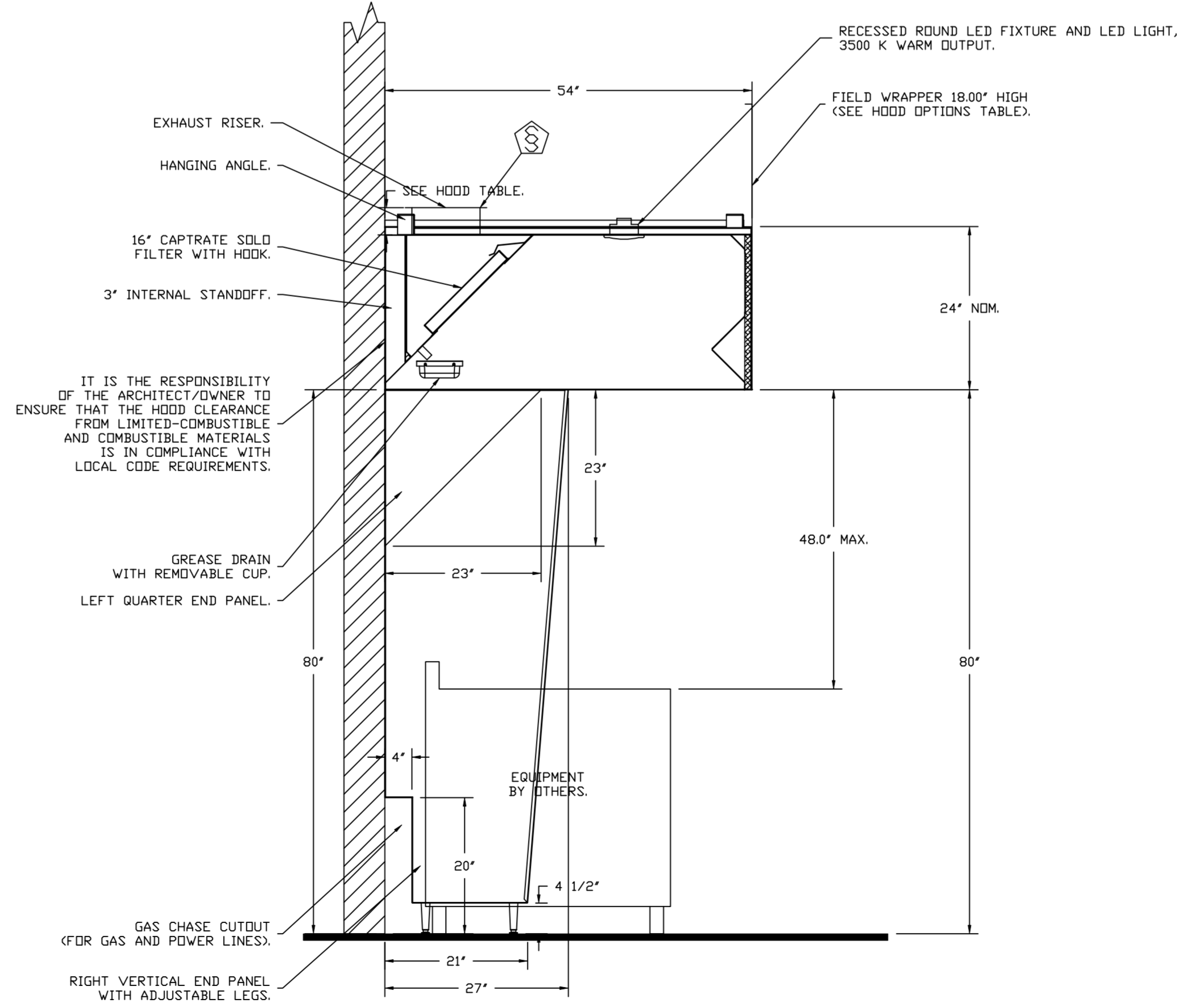
HANGING ANGLE MUST BE SUPPORTED WITH 1/2" - 13 TPI GRADE 5 (MINIMUM) ALL-THREAD. SANDWICH HANGING ANGLES AND CEILING ANCHOR POINTS WITH 1/2" GRADE 5 (MINIMUM) STEEL FLAT WASHERS AND 1/2" - 13 TPI GRADE 5 (MINIMUM) HEX NUTS AS SHOWN. MUST USE DOUBLED HEX NUT CONFIGURATION ABOVE CEILING ANCHORS. SINGLE HEX NUT BENEATH HANGING ANGLE IS ACCEPTABLE FOR FULL LENGTH HANGING ANGLES. MAINTAIN 1/4" OF EXPOSED THREADS BENEATH BOTTOM HEX NUT. TORQUE ALL HEX NUTS TO 57 FT-LBS.



**SECTION VIEW - MODEL 4224VHB-C
HOOD - #3 (DISH HD)**



**SECTION VIEW - MODEL 5424ND-2
HOOD - #1 (GRIDDLE HD)**



**SECTION VIEW - MODEL 5424ND-2
HOOD - #2 (FRY HD)**

REVISIONS	
DESCRIPTION	DATE



 www.captiveair.com

Air Solutions
 1329 East Kemper Rd., Ste. 4210, Cincinnati, OH, 45246
 PHONE: (513) 860-5555 EMAIL: reg120@captiveair.com

Freddy's - Georgia
 4245 US-78,
 LAGRANGE, GA, 30241

DATE: 9/28/2022
DWG.#: 5188729
DRAWN BY:
SCALE: 3/4" = 1'-0"
MASTER DRAWING

SHEET NO.
3

SPECIFICATIONS

TAG: Commercial Kitchen Ventilation Hoods, Listed Commercial Kitchen Hoods

PART 1 - GENERAL

1.1 SUMMARY

- A. The ND2 series is a Type I, wall canopy hood for use over 450°F, 700°F cooking surface temperatures. The aerodynamic design includes a mechanical baffle and performance enhancing lip for exceptional capture and containment.
- B. The VHB Series is a Premier Type II, exhaust only hood used over equipment not producing grease laden vapors. Type II hoods are used for condensation or heat removal applications.
- C. The hood shall have the size, shape, and performance specified on drawings.

1.2 SUBMITTALS

- A. The manufacturer assumes no liability for the use or results of use from this document. Specifications are to be reviewed by the engineer to confirm the project's requirements and meet Federal, State, and Local codes and regulations.
- B. As the manufacturer continues product development, it reserves the right to change design and specifications without notice.
- C. The manufacturer shall supply complete computer generated submittal drawings, including hood section view(s) and hood plan view(s). These drawings must be available to the engineer, architect, and owner for their use in construction, operation, and maintenance.

1.3 QUALITY ASSURANCE

- A. This hood is ETL-listed to standard UL710, ULC710, and ULC-S646 when installed in accordance with these installation instructions and National Fire Protection Association Standard NFPA 96, Standard for Ventilation Control and Fire Protection of Commercial Cooking Operations."
- B. Built-in compliance with NSF/ANSI Standard 2.
- C. The hood shall be ETL Listed as:
1. "Exhaust Hood Without Exhaust Damper."
 2. ETL Sanitation Listed and built in accordance with NFPA 96.
 3. The ETL label shall list temperature rating(s) and minimum CFM/ft rating(s).

1.4 WARRANTY

- A. All units shall be provided with the following standard warranty:
1. This equipment is warranted to be free from defects in materials and workmanship, under normal use and service, for a period of 2-years from date of shipment.
- B. The manufacturer shall not be liable for incidental and consequential losses and damages potentially attributable to malfunctioning equipment. Should any part of the equipment prove to be defective in material or workmanship within the 2-year warranty period, upon examination by the manufacturer, such part will be repaired or replaced by manufacturer at no charge. The buyer shall pay all labor costs incurred in connection with such repair or replacement. Equipment shall not be returned without manufacturer's prior authorization, and all returned equipment shall be shipped by the buyer, freight prepaid to a destination determined by the manufacturer.
- C. Refer to Manufacturer's Operation, Installation, and Maintenance (OIM) Manual for detailed descriptions of what is/is not covered and contact information for warranty claims.

PART 2 - PRODUCTS

2.1 GENERAL

- A. Construction shall be dependent on the structural application to minimize distortion and other defects. All seams, joints, and penetrations of the hood enclosure to the lower outermost

perimeter, which directs and captures grease-laden vapor and exhaust gases, shall have a liquid-tight continuous external weld in accordance with NFPA 96.

- B. Duct sizes, CFM, and static pressure requirements shall be as shown on drawings. Static pressure requirements shall be precise and accurate; air velocity and volume information shall be accurate within 1-ft increments along the length of the ventilator.

2.2 CONSTRUCTION

- A. Construction shall be type 304, 430 stainless steel.
- B. Double wall insulated front to eliminate condensation and increase rigidity on wide sizes. The insulation shall have a flexural modulus of 475 EI, meet UL 181 requirements and be in accordance with NFPA 90A and 90B.
- C. Hood shall be equipped with a minimum of four connections for hanger rods. Hood lengths greater than 12' will have added hangers.
- D. Exhaust duct collar to be 4" high with flange.
- E. The grease drain system shall be an enclosed integral part of the hood back and have slopes with an exposed, removable 1/2 grease cup to facilitate cleaning.
- F. An integral baffle to direct grease laden vapors toward the exhaust filter bank.
- G. Hood shall be furnished with UL classified filters, supplied in size and quantity as required by ventilator.
- H. All seams shall be welded and have stainless steel on exposed surfaces.

2.3 LIGHTING

- A. Recessed round LED fixture and LED light, 3500K Warm output.

2.4 FILTERS

- A. Stainless Steel Captrate Solo filter with hook, ETL Listed. Particulate capture efficiency: 85% efficient at 9 microns, 76% efficient at 5 microns.

2.5 OPTIONS

- A. Hood Mounted Utility Cabinet - Cabinet can store listed fire suppression system, listed components, pre-wired electrical controls.

2.6 ACCESSORIES

- A. End Panel(s) maximize hood performance and eliminate the effects of cross drafts in the kitchen. Units constructed of stainless steel and sized according to hood width and cooking equipment. Exposed edges hemmed for safety and rigidity. Selected panels:
1. Quarter End Panel
 2. Vertical End Panel
- B. Wrapper(s) may be installed from the factory or field installed. Wrapper(s) selected:
1. Wrapper
- C. Miscellaneous option(s) selected:
1. Riser Sensor Install -Sensor set-up for 3" thick double wall duct.

PART 3 - EXECUTION

3.1 EXAMINATION

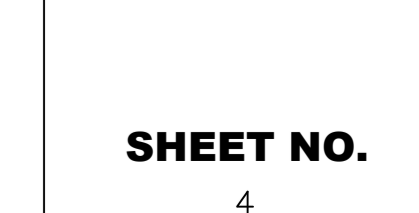
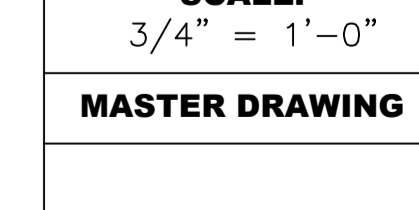
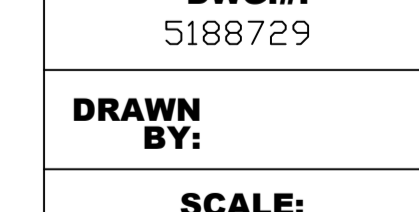
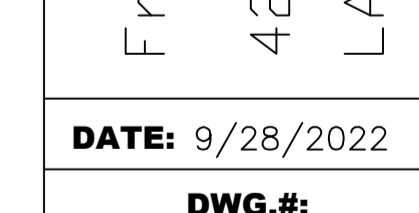
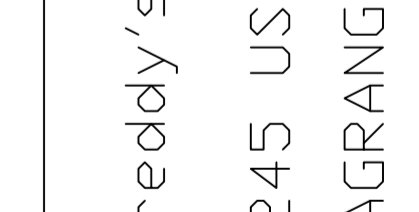
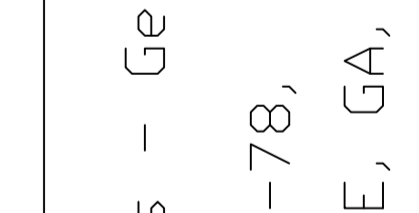
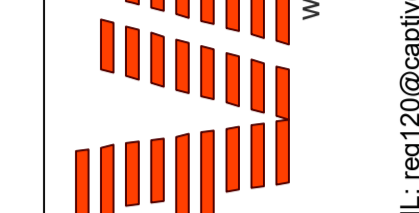
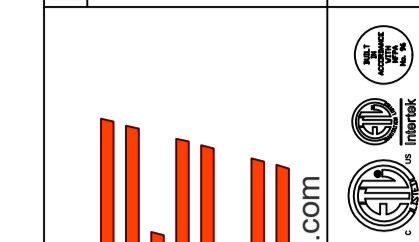
- A. Examine areas and conditions under which the system is installed. Do not proceed with work until unsatisfactory conditions have been corrected in a manner acceptable to Installer.

3.2 INSTALLATION

- A. Install in accordance with manufacturer's instructions, drawings, written specifications, manufacturer's installation manual, and all applicable building codes.

REVISIONS

DESCRIPTION	DATE:
Δ	
Δ	
Δ	
Δ	



Freddy's - Georgia
4245 US-78,
LAGRANGE, GA, 30241

DATE: 9/28/2022

DWG.#:
5188729DRAWN
BY:SCALE:
3/4" = 1'-0"

MASTER DRAWING

SHEET NO.

4

www.captiveaire.com
1329 East Kemper Rd., Ste. 4210, Cincinnati, OH, 45246 PHONE: (513) 860-5555 EMAIL: reg120@captiveaire.com

Air Solutions

EXHAUST FAN INFORMATION - JOB#5188729

FAN UNIT NO	TAG	QTY	FAN UNIT MODEL #	MANUFACTURER	CFM	ESP	RPM	MOTOR ENCL	HP	BHP	PHASE	VOLT	FLA	DISCHARGE VELOCITY	WEIGHT (LBS)	SDNES
1	EF-1 (GRIDDLE)	1	DU85HFA	CAPTIVEAIRE	1700	1.200	1381	TEAD-ECM	0.750	0.5120	1	208	5.2	538 FPM	121	11.9
2	EF-2 (FRYER)	1	DU50HFA	CAPTIVEAIRE	775	1.250	1532	TEAD-ECM	0.500	0.3950	1	115	6.3	295 FPM	101	16.4
3	DISH EF	1	DU33HFA	CAPTIVEAIRE	525	0.800	1487	TEAD-ECM	0.333	0.1990	1	115	4.3	260 FPM	67	15.3

DOAS/RTU FAN SCHEDULE - JOB#5188729

FAN UNIT NO	TAG	QTY	DOAS/RTU MODEL #	MANUFACTURER	FAN INFORMATION										ELECTRICAL INFORMATION						COOLING INFORMATION						REHEAT INFORMATION				GAS HEAT INFORMATION				NOTES	
					BLOWER	RETURN AIR CFM	MAX OUTSIDE AIR CFM	TOTAL CFM	WEIGHT (LBS)	ESP	HP	PHASE	VOLT	MCA	MOC	OUTSIDE AIR		MIXED AIR		LEAVING AIR			CAPACITY		IEER	ISMRE	DISCHARGE		CAPACITY		MOISTURE REMOVAL RATE	GAS TYPE	INPUT BTUs	OUTPUT BTUs		TEMP RISE
																DB	WB	DB	WB	DB	WB	DP	TOTAL	SENS.			DB	WB	DESIRED	MAX						
4	DOAS-1	1	CASRTU3-1.300-15-15T-DOAS	CAPTIVEAIRE	15P-3	0	2800	2800	2474	0.500	2.00	3	208	59.2A	60A	80.9°F	76.4°F	80.9°F	76.4°F	57.8°F	57.1°F	56.7°F	186.0 MBH	67.9 MBH	18.8	5.7	70.0°F	61.6°F	37.1 MBH	129.6 MBH	106.4 LBS/HR	NATURAL	296285	239991	75°F	1,2,3,4,5,6,7,8,9,10,11,12,13,14,15

NOTES:

1. INVERTER SCROLL COMPRESSOR WITH INTEGRATED OIL SENSOR. DIGITAL OR STAGED SCROLL NOT AN APPROVED EQUAL
2. DIRECT DRIVE PLENUM BLOWER. BELT DRIVEN BLOWERS ARE NOT ACCEPTABLE
3. INTEGRATED MONITORING VIA CELLULAR CONNECTION BY MANUFACTURER
4. REFRIGERATION PRESSURE MONITORING ON HIGH AND LOW PRESSURE SIDE OF SYSTEM INCLUDED THROUGH DIGITAL INTERFACE
5. EC MOTOR CONDENSING FANS
6. ELECTRONIC EXPANSION VALVE. TXV NOT ACCEPTABLE
7. SUCTION LINE ACCUMULATOR
8. FACTORY COMMISSIONING WITH 5 YEAR PARTS WARRANTY, 25 YEAR WARRANTY ON STAINLESS STEEL HEAT EXCHANGER
9. AVERAGING INTAKE, EVAP AND DISCHARGE TEMPERATURE SENSORS (DISCHARGE SENSOR TO BE FACTORY MOUNTED WITHIN UNIT)
10. 2" EXTERIOR DUAL-WALL CONSTRUCTION W/ R-13 INSULATION-MINIMUM 20GA EXTERIOR W/ 14GA BASE
11. 81% EFFICIENT FURNACE, WITH MODULATING INDUCER TO MAINTAIN CONSTANT COMBUSTION EFFICIENCY ACROSS FIRING RANGE. 6:1 TURNDOWN WITH NG AND 5:1 TURNDOWN WITH LP
12. SUPPLY CFM MONITORING INTEGRAL TO UNIT WITH CFM MEASUREMENT INCLUDED THROUGH DIGITAL INTERFACE
13. FULLY MODULATING HOT GAS REHEAT
14. HAIL GUARD FOR CONDENSING COIL
15. DOWN DISCHARGE/DOWN RETURN

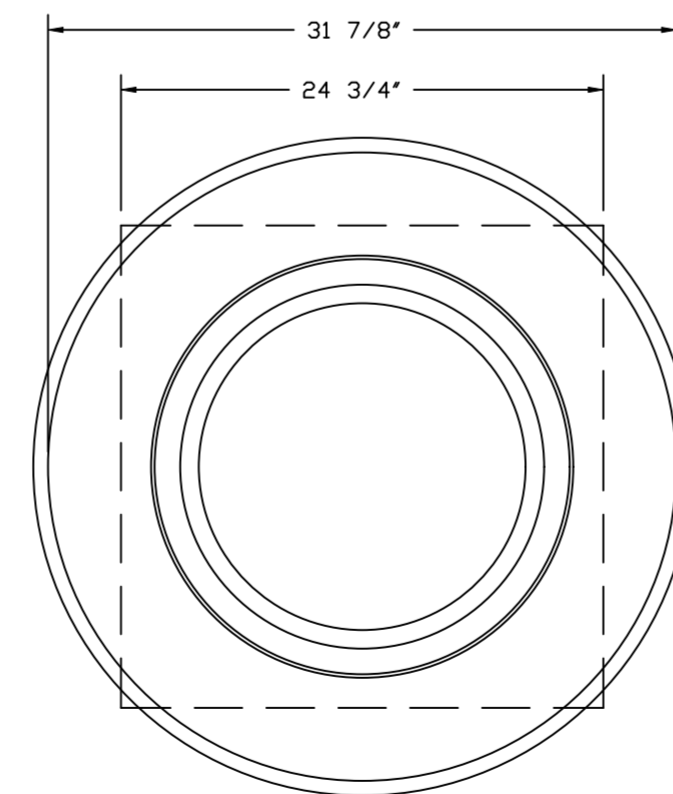
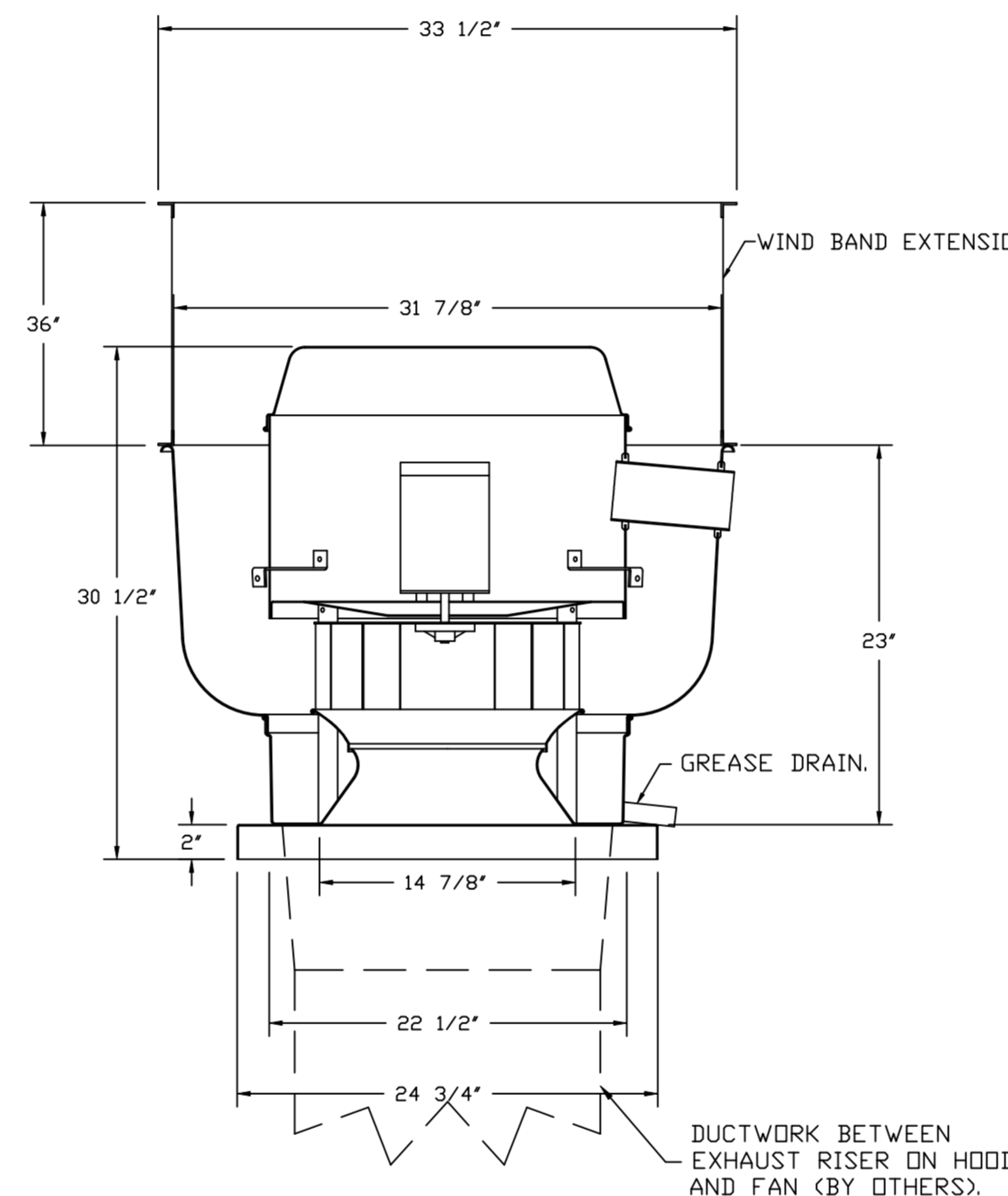
FAN OPTIONS

FAN UNIT NO	TAG	QTY	DESCRIPTION
1	EF-1 (GRIDDLE)	1	GREASE BOX
		1	UPBLAST FAN WHEEL ACCESS PORT
		1	36" TALL STRAIGHT WIND BAND EXTENSION 15 (SHIPS LOOSE)
2	EF-2 (FRYER)	1	GUY LINE EYE BOLTS - USED FOR 4 GUY LINE TIE OFF POINTS
		1	ECM WIRING PACKAGE - PWM SIGNAL FROM ECPM03 PREWIRE (TELCO MOTOR), CCW ROTATION
		1	2 YEAR PARTS WARRANTY
3	DISH EF	1	SCR-11 BIRD SCREEN
		1	I 15-BDD DAMPER
		1	ECM WIRING PACKAGE - MANUAL OR 0-10VDC REFERENCE SPEED CONTROL -RTC- (TELCO MOTOR), CCW ROTATION
4	DOAS-1	1	2 YEAR PARTS WARRANTY
		1	INLET PRESSURE GAUGE, 0-35"
		1	MANIFOLD PRESSURE GAUGE, 0 TO 10" WC, 1 FURNACE
		1	RTU TOTAL CFM MONITORING
		1	SINGLE POINT ELECTRICAL CONNECTION FOR RTU. 750VA TRANSFORMER USED. IF A NON-DCV PREWIRE CONTROLS THIS UNIT, THE #28, #47, #MA, OR #E2 PREWIRE OPTION MUST BE SELECTED. DOES NOT PROVIDE SUPPLY STARTER IN PREWIRE
		1	CASLINK BUILDING MONITORING SYSTEM - INTERNET OR CELLULAR CONNECTION REQUIRED
		1	RTU3 DOWN DISCHARGE
		1	2" MERV 13 FILTERS FOR RTU3 (QTY. 4)
		1	2" MERV 8 FILTERS FOR RTU3 (QTY. 4)
		1	OVERHEAT STAT
		1	VFD FACTORY MOUNTED AND WIRED IN RTU COMMERCIAL CONTROL VESTIBULE
		1	COMMERCIAL SMOKE DETECTOR/ALARM INTERLOCK - ALARM SUPPLIED BY OTHERS
		1	OCCUPIED SCHEDULING
		1	CLOGGED FILTER SWITCH - NOTIFICATION ON HMI
		1	RTU3 HAIL GUARD
		1	RTU3 DOWN RETURN
		1	VAV PACKAGE W/ 0-10VDC INPUT CONTROL (571 VFD INCLUDED)
		1	RTU3 CURB DUCT HANGER
		1	15 TON MODULATING COOLING OPTION, 208/230V. R410A REFRIGERANT, VARIABLE SPEED COMPRESSOR, ECM CONDENSING FANS
		1	15 TON MODULATING REHEAT OPTION - SPACE DEWPOINT CONTROL
1	RTU INTAKE/RETURN DAMPER - MANUAL CONTROL VIA HMI		
1	5 YEAR ENTIRE UNIT PARTS WARRANTY, 10 YEAR ENTIRE UNIT PARTS WARRANTY WITH REMOTE MONITORING AND CAPTIVEAIRE SERVICE CONTRACT, 25 YEAR STAINLESS STEEL FURNACE PARTS WARRANTY (SEE ADDITIONAL DETAILS)		

FAN ACCESSORIES

FAN UNIT NO	TAG	EXHAUST			SUPPLY			
		GREASE CUP	GRAVITY DAMPER	WALL MOUNT	SIDE DISCHARGE	GRAVITY DAMPER	MOTORIZED DAMPER	WALL MOUNT
1	EF-1 (GRIDDLE)	YES						
2	EF-2 (FRYER)	YES						
3	DISH EF		YES					

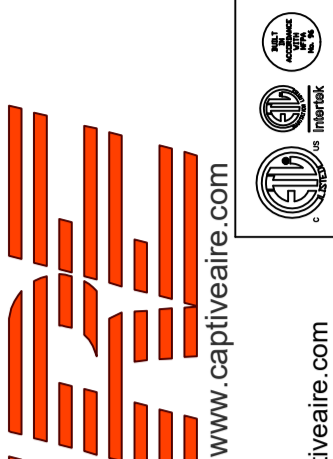
FAN #1 DU85HFA - EXHAUST FAN (EF-1 (GRIDDLE))



TOP VIEW

REVISIONS

DESCRIPTION	DATE



Freddy's - Georgia
4245 US-78,
LAGRANGE, GA, 30241

DATE: 9/28/2022

DWG.#:
5188729

DRAWN BY:

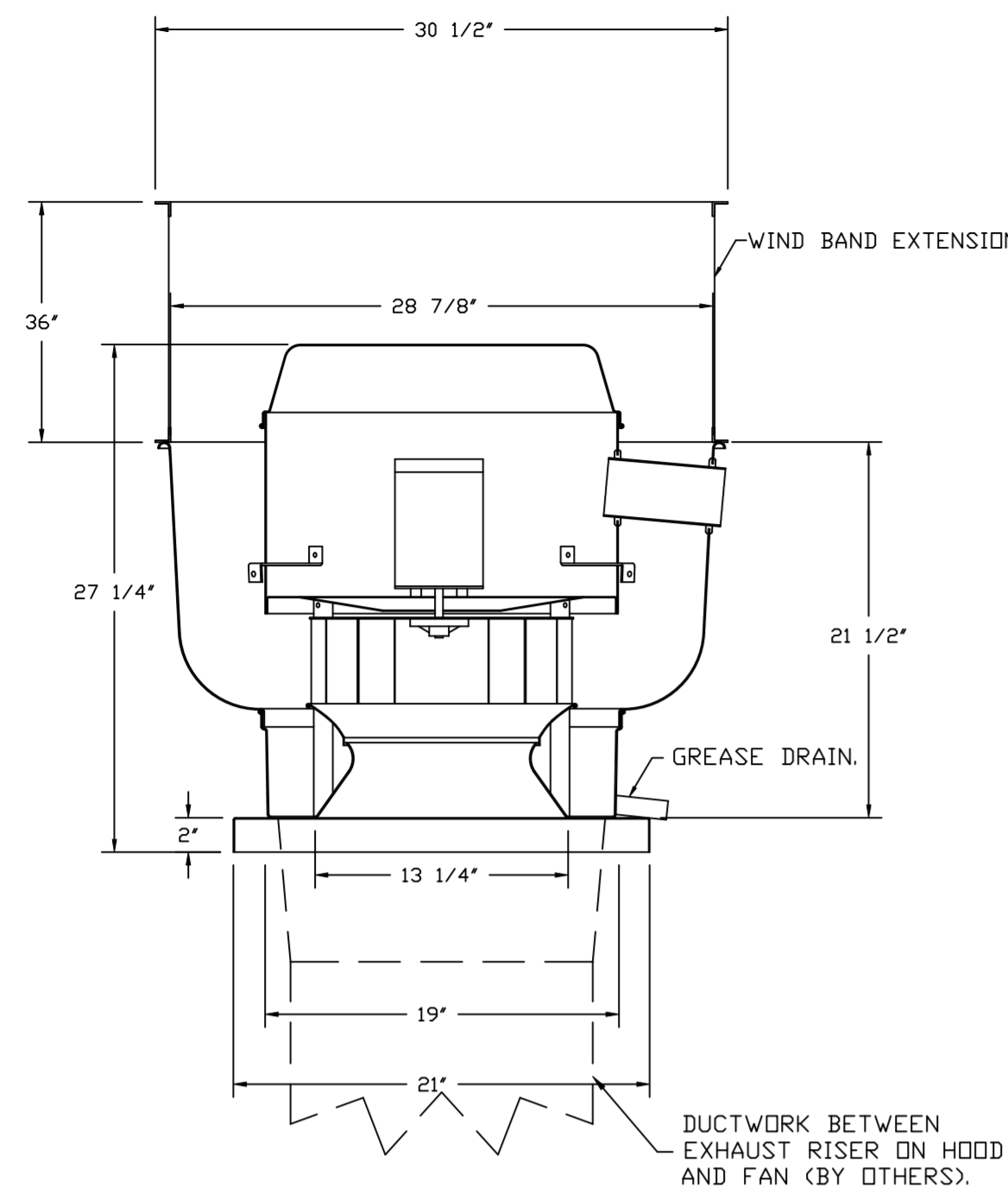
SCALE:
3/4" = 1'-0"

MASTER DRAWING

SHEET NO.

5

1329 East Kemper Rd., Ste. 4210, Cincinnati, OH, 45246 PHONE: (513) 860-5555 EMAIL: reg120@captiveaire.com



FEATURES:

- DIRECT DRIVE CONSTRUCTION (NO BELTS/PULLEYS).
- ROOF MOUNTED FANS.
- RESTAURANT MODEL.
- UL705 AND UL762 AND ULC-S645
- VARIABLE SPEED CONTROL.
- INTERNAL WIRING.
- THERMAL OVERLOAD PROTECTION (SINGLE PHASE).
- HIGH HEAT OPERATION 300°F (149°C).
- GREASE CLASSIFICATION TESTING.
- NEMA 3R SAFETY DISCONNECT SWITCH.

NORMAL TEMPERATURE TEST

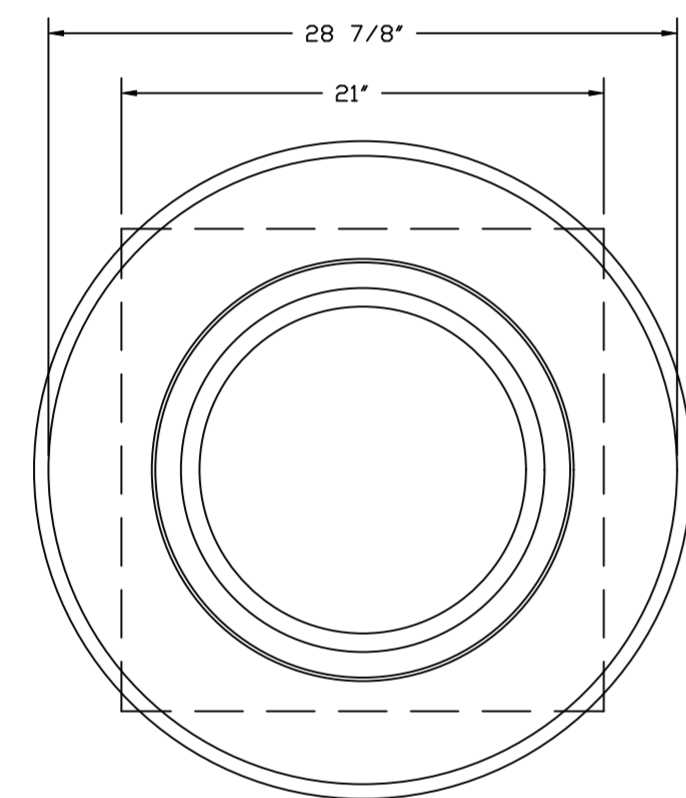
EXHAUST FAN MUST OPERATE CONTINUOUSLY WHILE EXHAUSTING AIR AT 300°F (149°C) UNTIL ALL FAN PARTS HAVE REACHED THERMAL EQUILIBRIUM, AND WITHOUT ANY DETERIORATING EFFECTS TO THE FAN WHICH WOULD CAUSE UNSAFE OPERATION.

ABNORMAL FLARE-UP TEST

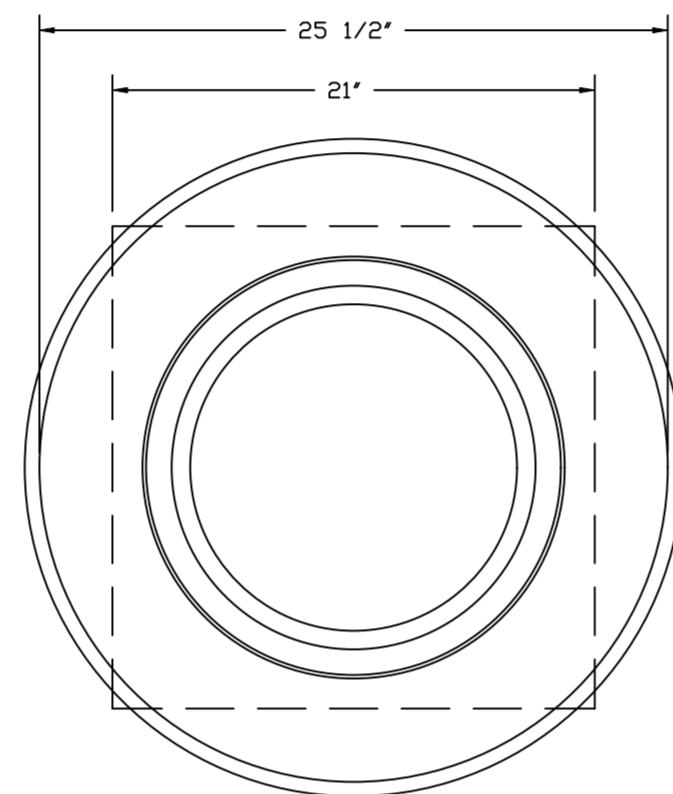
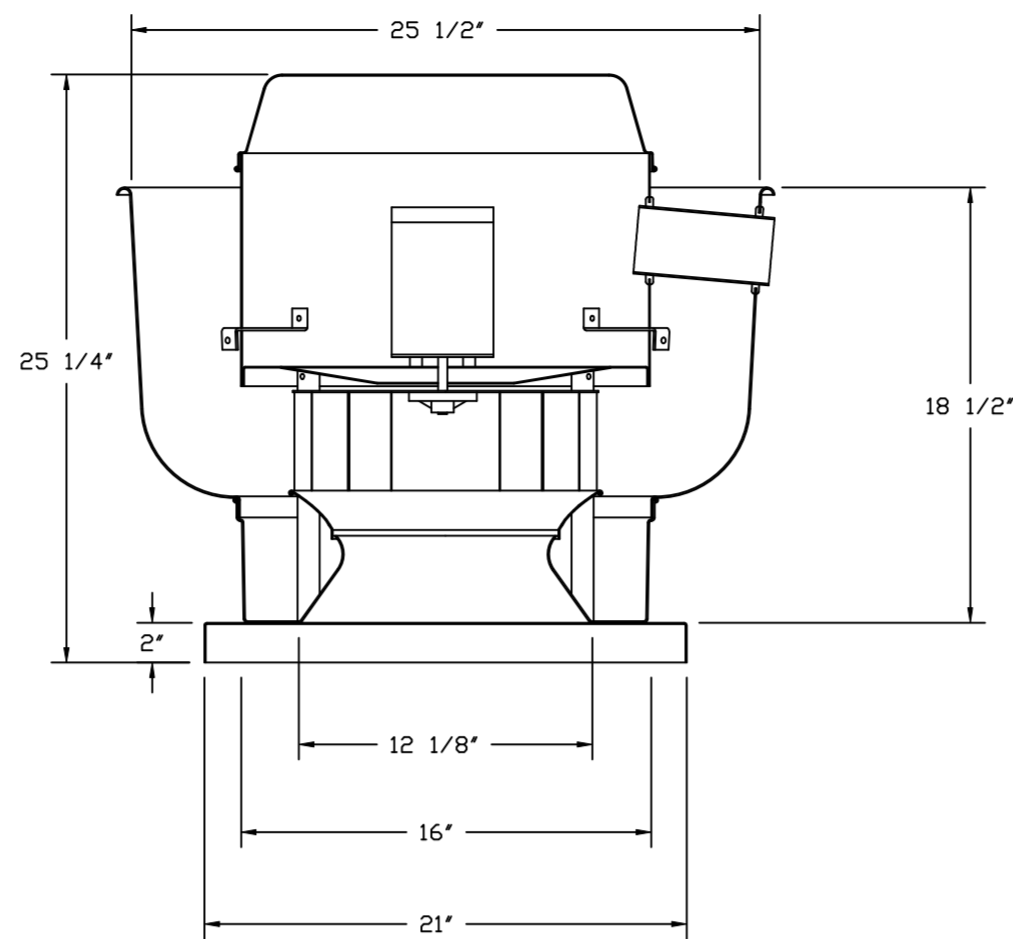
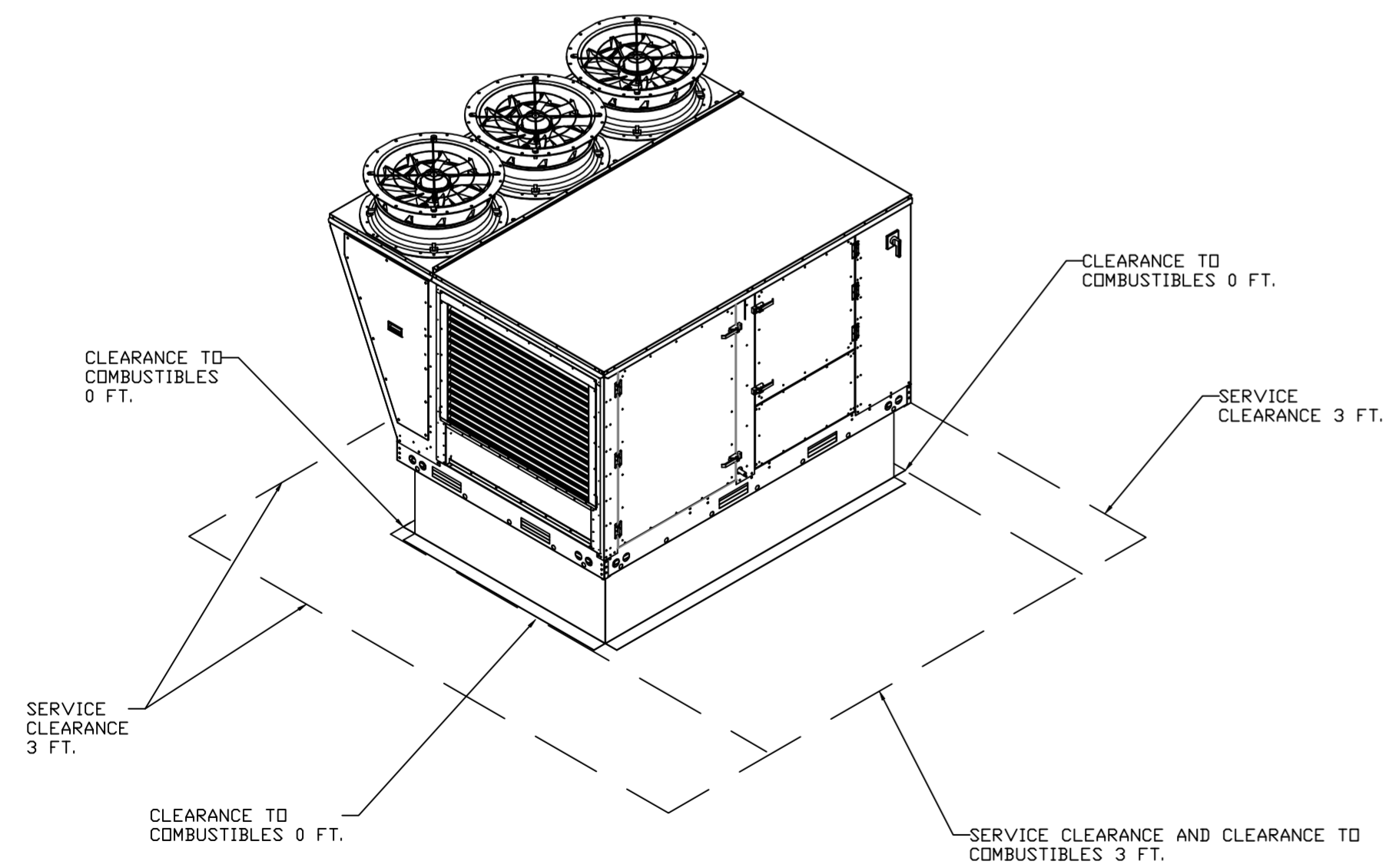
EXHAUST FAN MUST OPERATE CONTINUOUSLY WHILE EXHAUSTING BURNING GREASE VAPORS AT 600°F (316°C) FOR A PERIOD OF 15 MINUTES WITHOUT THE FAN BECOMING DAMAGED TO ANY EXTENT THAT COULD CAUSE AN UNSAFE CONDITION.

OPTIONS

- GREASE BOX.
- UPPLAST FAN WHEEL ACCESS PORT.
- 36" TALL STRAIGHT WIND BAND EXTENSION (3 SHIPS LODGE).
- GUY LINE EYE BOLTS - USED FOR 3 GUY LINE TIE OFF POINTS.
- ECM WIRING PACKAGE - PWM SIGNAL FROM ECPM03 PREWIRE (TELCO MOTOR), CCW ROTATION.
- 2 YEAR PARTS WARRANTY.



TOP VIEW



TOP VIEW

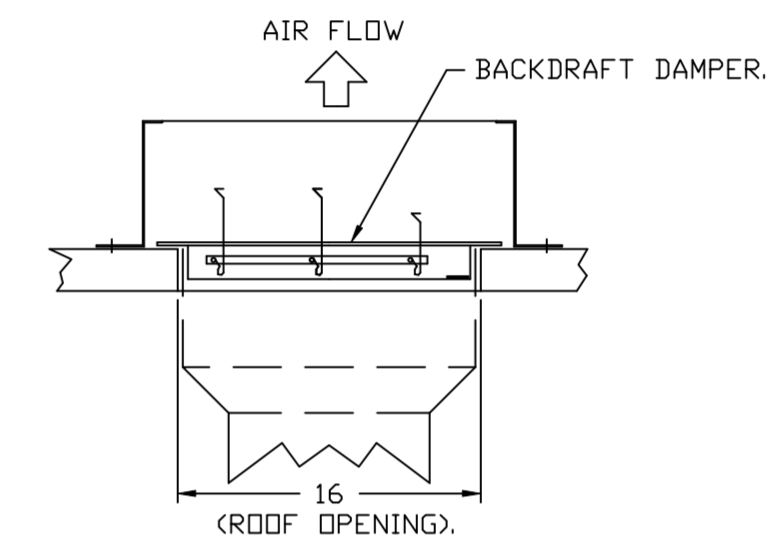
FEATURES:

- DIRECT DRIVE CONSTRUCTION (NO BELTS/PULLEYS).
- ROOF MOUNTED FANS.
- UL705.
- VARIABLE SPEED CONTROL.
- INTERNAL WIRING.
- THERMAL OVERLOAD PROTECTION (SINGLE PHASE).
- NEMA 3R SAFETY DISCONNECT SWITCH.

OPTIONS

- SCR-11 BIRD SCREEN.
- 1 15-BDD DAMPER.
- ECM WIRING PACKAGE - MANUAL OR 0-10VDC REFERENCE SPEED CONTROL.
- RTC- (TELCO MOTOR), CCW ROTATION.
- 2 YEAR PARTS WARRANTY.

BACKDRAFT DAMPER INSTALLATION



REVISIONS	
DESCRIPTION	DATE

CAPTIVE

Air Solutions

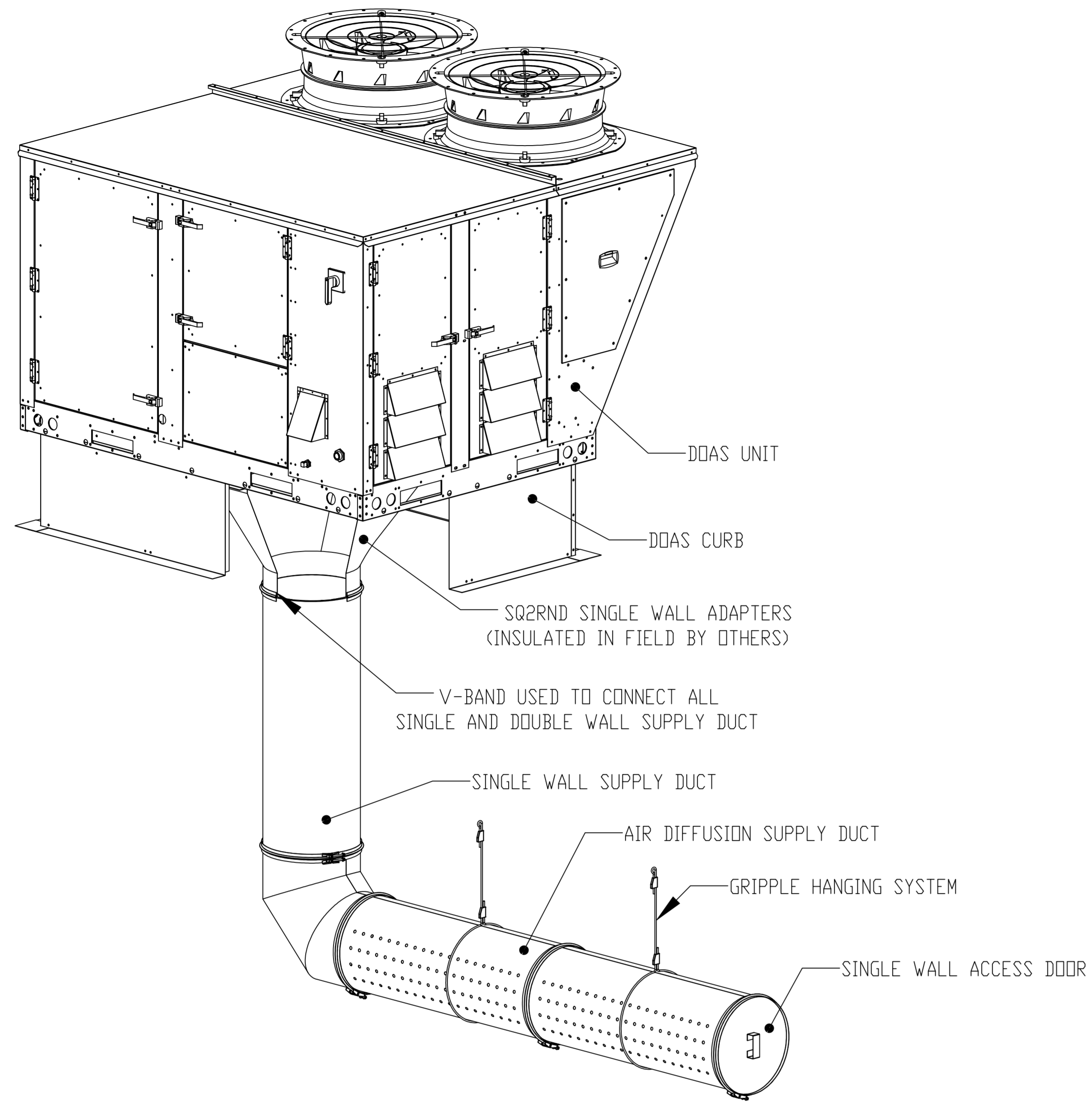
www.captiveair.com

1329 East Kemper Rd., Ste. 4210, Cincinnati, OH, 45246 PHONE: (513) 860-5555 EMAIL: reg120@captiveair.com

Freddy's - Georgia
4245 US-78,
LAGRANGE, GA, 30241

DATE: 9/28/2022
DWG.#: 5188729
DRAWN BY:
SCALE: 3/4" = 1'-0"
MASTER DRAWING

SHEET NO.
6



REVISIONS	
DESCRIPTION	DATE:



 www.captiveair.com

Air Solutions

 1329 East Kemper Rd., Ste. 4210, Cincinnati, OH, 45246 PHONE: (513) 860-5555 EMAIL: reg120@captiveair.com

Freddy's - Georgia
 4245 US-78,
 LAGRANGE, GA, 30241

DATE: 9/28/2022

DWG.#:
5188729

DRAWN BY:

SCALE:
3/4" = 1'-0"

MASTER DRAWING

SHEET NO.
7



AIR DIFFUSION SUPPLY DUCT SPECIFICATIONS:
 PROVIDE AIR DIFFUSION SUPPLY DUCT EQUAL TO CAPTIVEAIRE SYSTEMS MODEL DW-S0(HC), DW-S90(HC), & DW-S180(HC).
 THREE DISTINCT HOLE PATTERN OPTIONS TO COVER A VARIETY OF CEILING HEIGHTS.
 NO ADDITIONAL DIFFUSERS REQUIRED, AS THE DUCT ITSELF PROVIDES AIR DIFFUSION.
 MADE OF HIGH QUALITY STAINLESS STEEL DESIGNED TO LAST 20+ YEARS.
 HIGH INDUCTION SUPPLY DUCT IS CONSTRUCTED USING 24 GAUGE, 430 SS - 5" THRU 24".
 HIGH INDUCTION SUPPLY DUCT IS CONSTRUCTED USING 20 GAUGE, 430 SS - 26" THRU 36".
 QUICK ONSITE ASSEMBLY USING EPDM GASKETS & UNIVERSAL V-BANDS.
 DOUBLE WALL SUPPLY DUCT AVAILABLE FOR INTERIOR AND EXTERIOR SPACES, EITHER CONDITIONED OR UNCONDITIONED.
 DOUBLE WALL SUPPLY DUCT AVAILABLE IN DW-1S, DW-2S, & DW-3S TO MEET SPECIFIC REGIONAL "R" VALUE REQUIREMENTS.

Insulation R-Value Recommendations

Supply Duct Type	Minimum R-value	Space Type
Single Wall - S & -HC	N/A	Conditioned Space Only
Double Wall - 1S	R-4	Unconditioned Interior Space Only
Double Wall - 2S	R-8	Unconditioned Space Climate Zones 1-4
Double Wall - 3S	R-12	Unconditioned Space Climate Zones 5-8

DOUBLE WALL SUPPLY DUCT IS INSULATED WITH A 24 GAUGE 430 STAINLESS OUTER SHELL.
 AIR DIFFUSION SUPPLY DUCT COMPLIES WITH SMACNA (SHEET METAL AND AIR CONDITIONING CONTRACTORS) BEST PRACTICES.
 POSITIONING OF SPRINKLERS TO AVOID OBSTRUCTION TO DISCHARGE, SEE NFPA 13, TABLE 8.12.5.1.1.

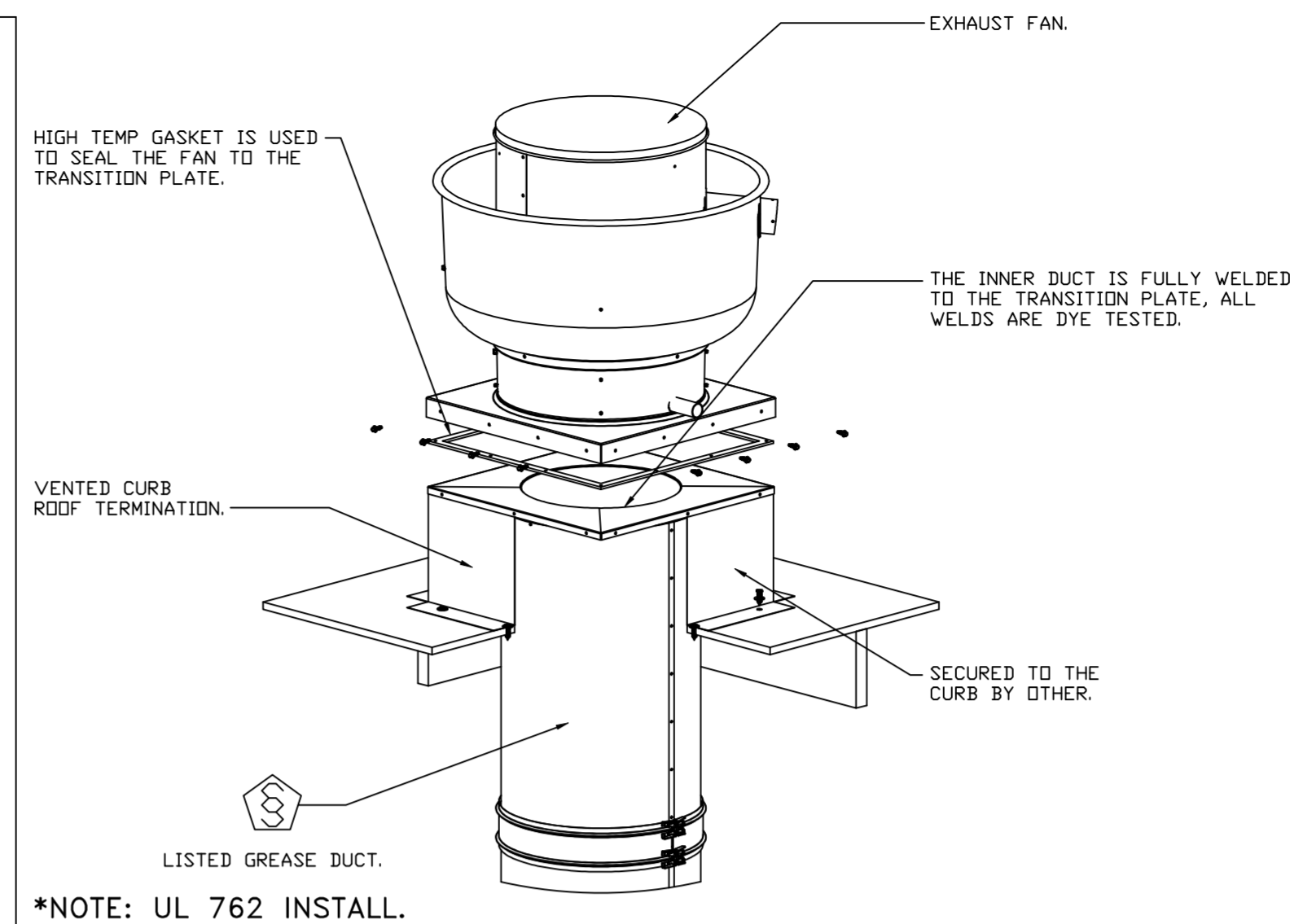


GREASE DUCT & CHIMNEY SPECIFICATIONS:
 PROVIDE GREASE DUCT EQUAL TO CAPTIVEAIRE SYSTEMS MODEL "DW"
 ROUND 20 GAUGE 430 STAINLESS STEEL DUCTWORK. MODEL "DW"
 IS LISTED TO UL-1978 AND IS INSTALLED USING "V" CLAMP LOCKING
 CONNECTIONS SEALED WITH 3M FIRE BARRIER 2000 PLUS. MODEL "DW"
 DOES NOT REQUIRE WELDING PROVIDING IT HAS BEEN INSTALLED PER
 THE MANUFACTURES INSTALLATION GUIDE.
 PROVIDE RATED ACCESS DOORS AT EVERY CHANGE IN DIRECTION AND EVERY 12' ON CENTER.
 PER MANUFACTURES LISTING MODEL "DW" HORIZONTAL RUNS LESS THAN 75 FT. CAN BE
 SLOPED 1/16" PER 12", HORIZONTAL RUNS MORE THAN 75 FT. CAN BE SLOPED 3/16" PER 12".
 DUCT SHOULD BE SLOPED AS MUCH AS POSSIBLE TO REDUCE THE CHANCE OF GREASE
 ACCUMULATION IN HORIZONTAL RUNS.

IF THE DUCT OR CHIMNEY IS WITHIN 18 INCHES OF COMBUSTIBLE MATERIAL, PROVIDE
 UL-2221 OR UL-103 HT LISTED DOUBLE WALL GREASE DUCT OR DOUBLE WALL CHIMNEY
 EQUAL TO CAPTIVEAIRE SYSTEMS MODEL "DW- 2R, 2R TYPE HT, 3R, OR 3Z" ROUND 20 GAUGE
 430 STAINLESS INNER DUCT INSULATED WITH A 24 GAUGE 430 STAINLESS OUTER SHELL.

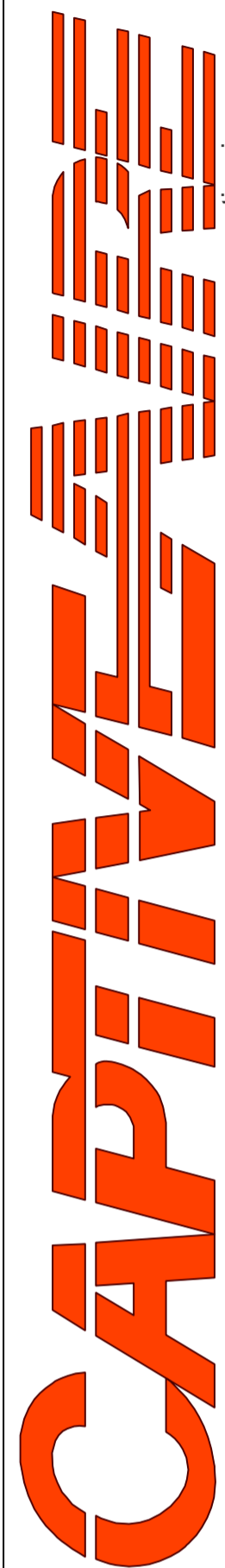
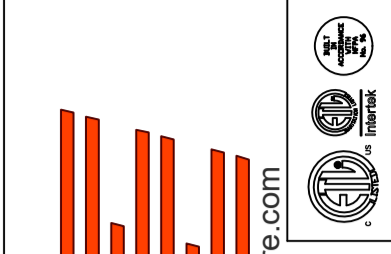
CUSTOMER APPROVAL TO MANUFACTURE:

APPROVED AS NOTED	<input type="checkbox"/>
APPROVED WITH NO EXCEPTION TAKEN	<input type="checkbox"/>
REVISE AND RESUBMIT	<input type="checkbox"/>
SIGNATURE _____	
YOUR TITLE _____	DATE _____



REVISIONS

DESCRIPTION	DATE:



Air Solutions

1329 East Kemper Rd., Ste. 4210, Cincinnati, OH, 45246 PHONE: (513) 860-5555 EMAIL: reg120@captivaire.com

Freddy's - Georgia
 4245 US-78,
 LAGRANGE, GA, 30241

DATE: 9/28/2022

DWG.#:
5188729

DRAWN BY:

SCALE:
3/4" = 1'-0"

MASTER DRAWING

SHEET NO.
8

GREASE BOX INSTALLATION

GREASEBOX
REV.#2 08/19/02

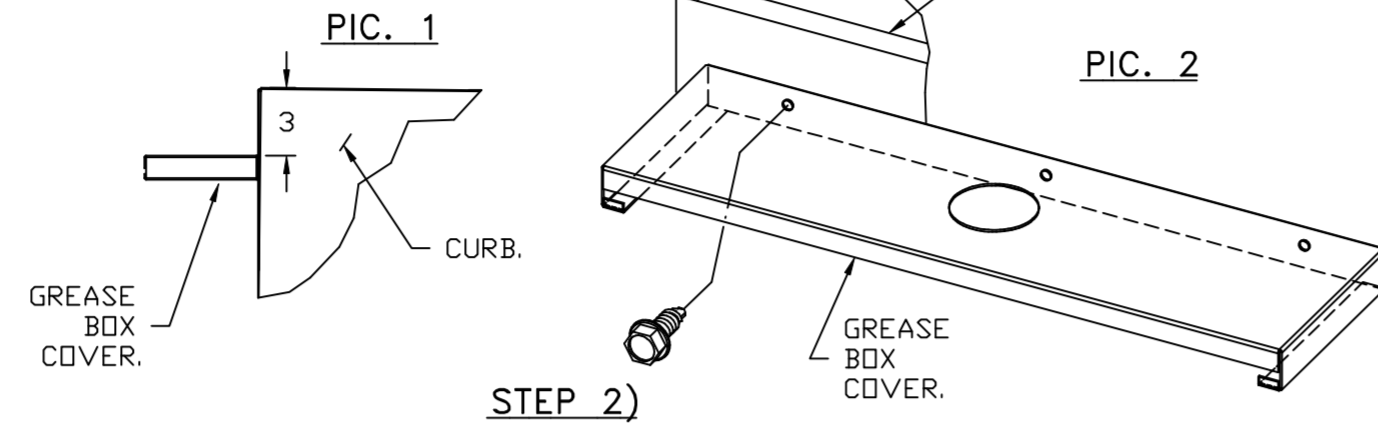
PARTS INCLUDED

- GREASE BOX.
- GREASE BOX COVER.
- GREASE PIPE.
- SHEET METAL SCREWS
3 - LONG (3/4" LG.).

GREASE BOX FIELD INSTALLATION

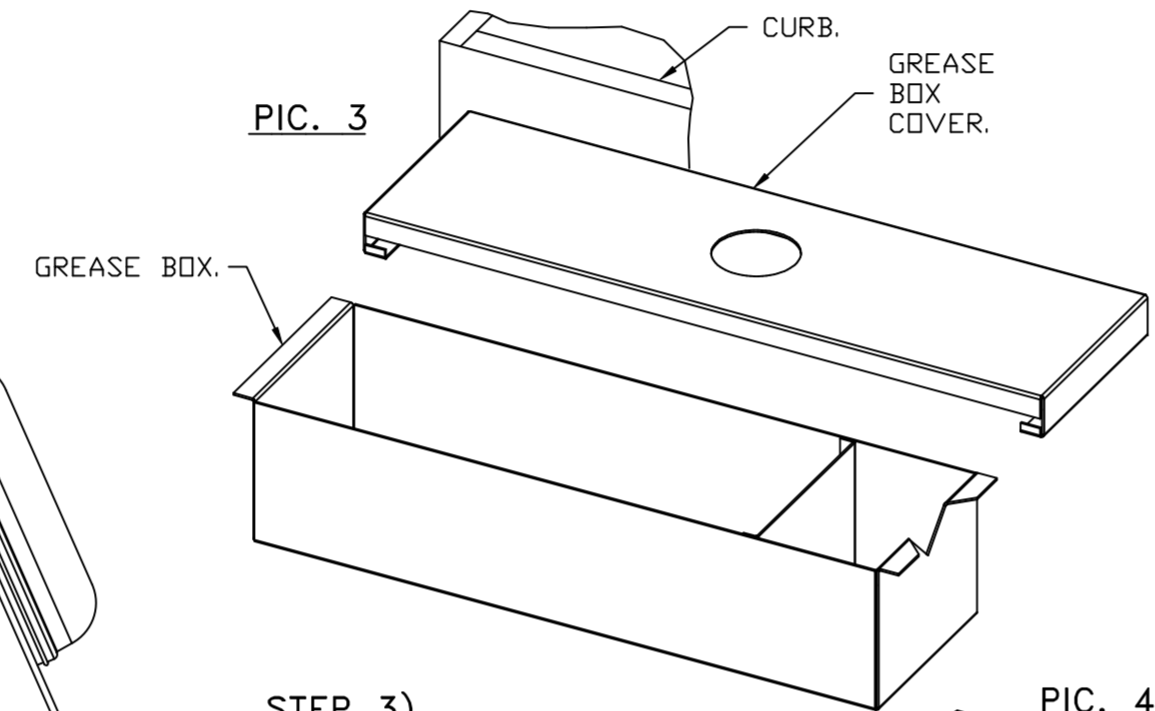
STEP 1)

ATTACH GREASE BOX COVER TO THE CURB, HOLD 3" DIMENSION AS SHOWN ON PIC. 1. SCREW GREASE BOX COVER TO CURB USING (3) LONG (3/4" LG.) SCREWS AS SHOWN ON PIC. 2.



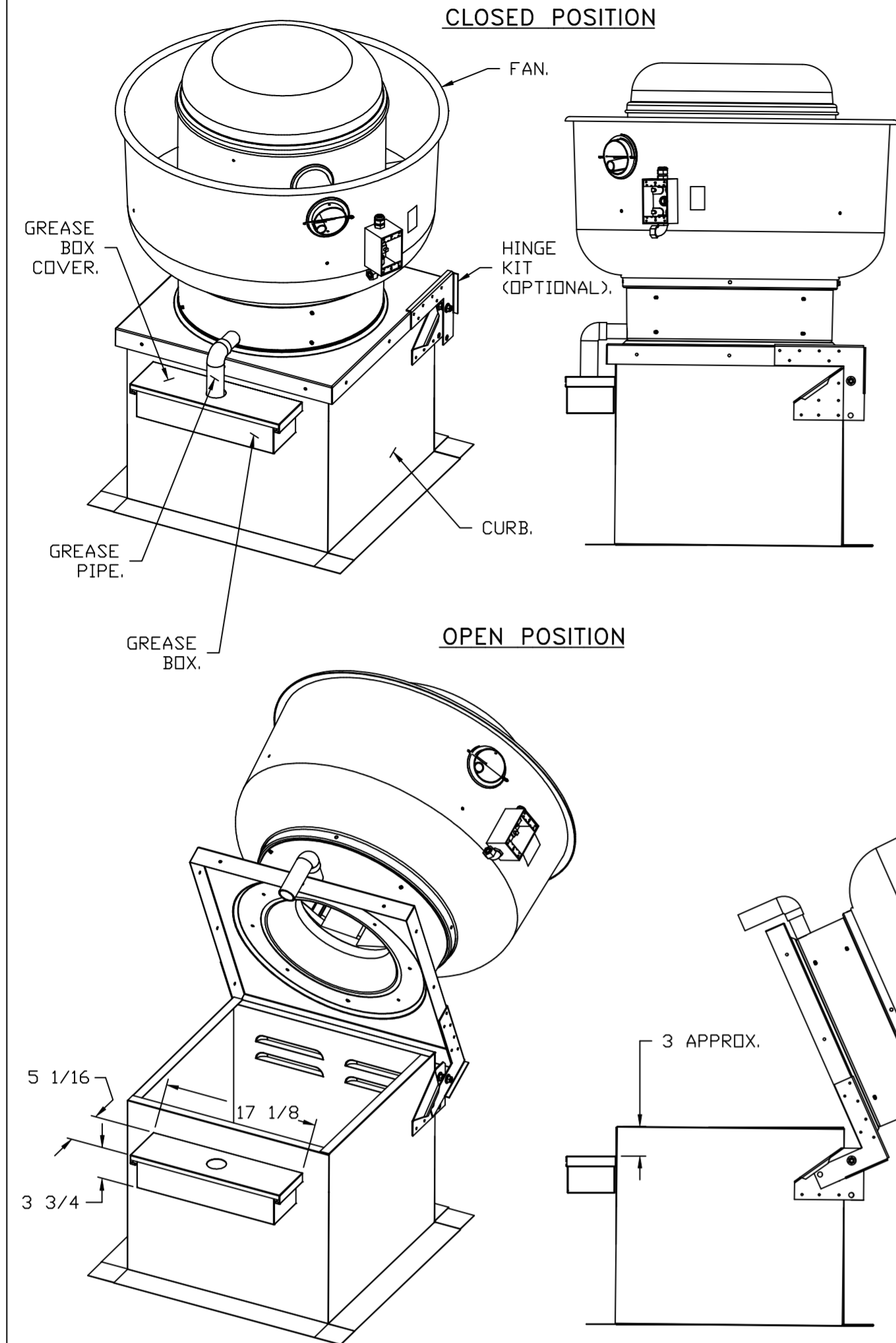
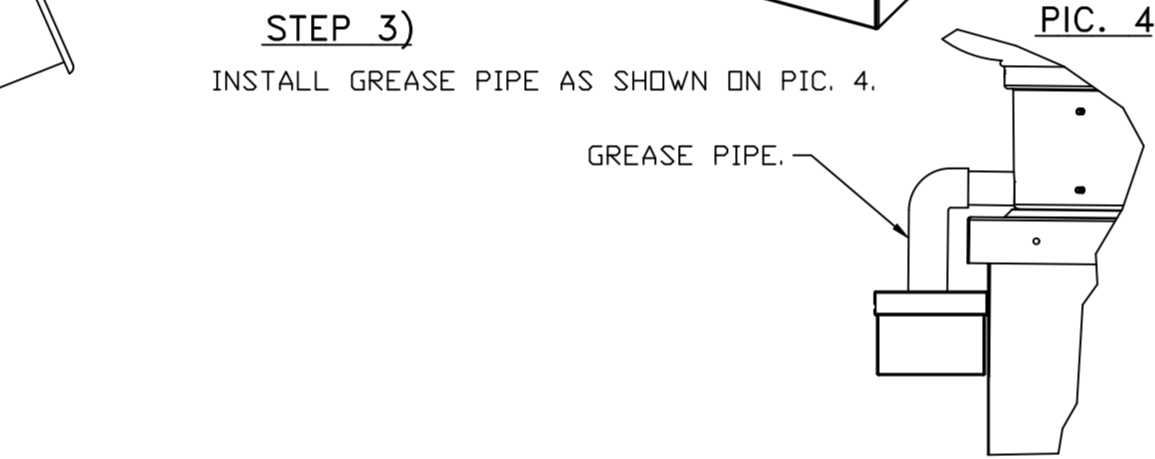
STEP 2)

ATTACH GREASE BOX TO GREASE BOX COVER, SLIDE AND DROP. AS SHOWN ON PIC. 3.



STEP 3)

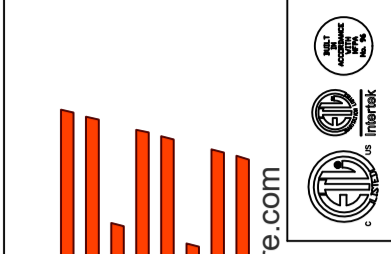
INSTALL GREASE PIPE AS SHOWN ON PIC. 4.



*NOTE: UL 705 INSTALL.

REVISIONS

DESCRIPTION	DATE:



CAPTIVE
Air Solutions
www.captiveair.com
1329 East Kemper Rd., Ste. 4210, Cincinnati, OH, 45246 PHONE: (513) 860-5555 EMAIL: reg120@captiveair.com

Freddy's - Georgia
4245 US-78,
LAGRANGE, GA, 30241

DATE: 9/28/2022

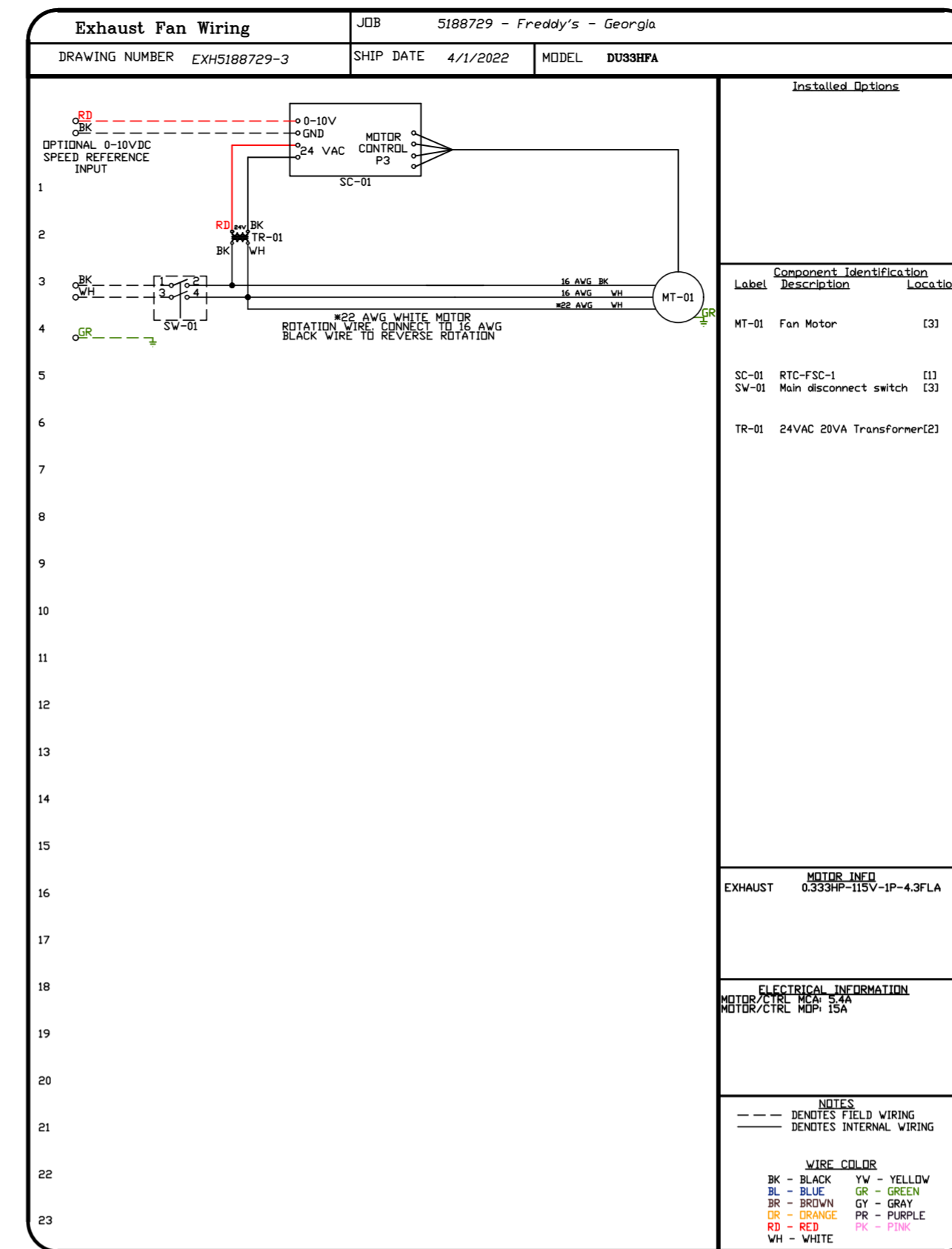
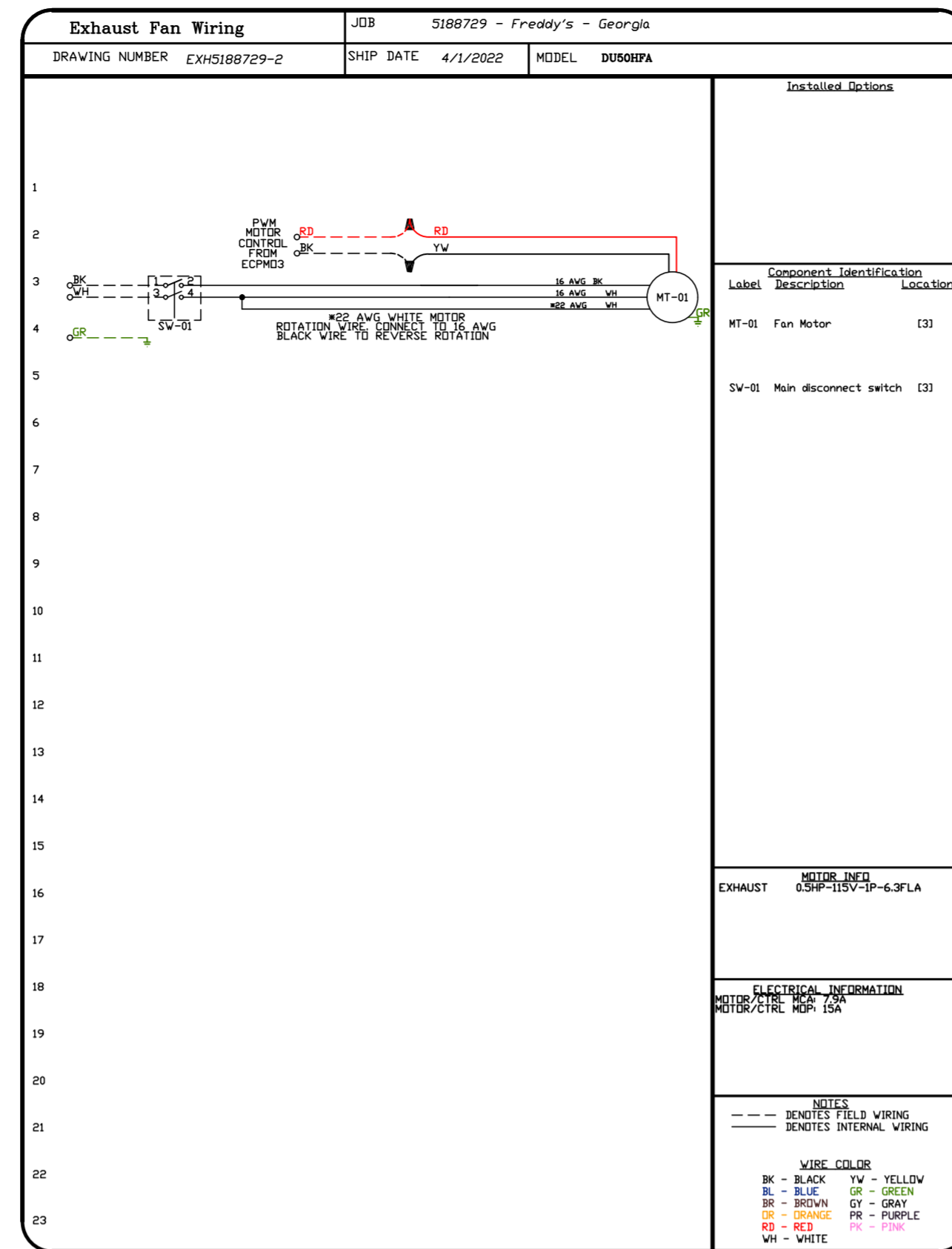
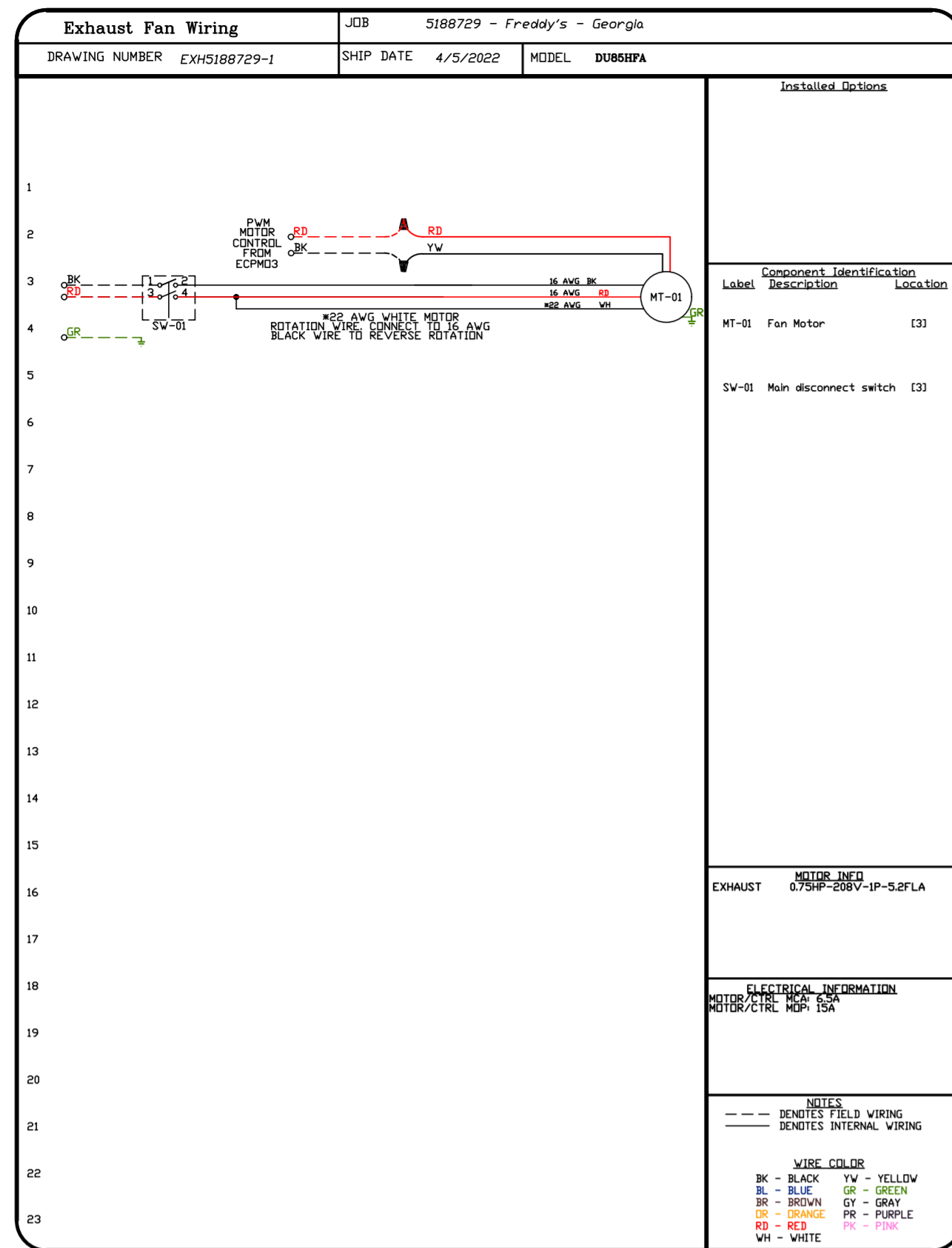
DWG.#:
5188729

DRAWN BY:

SCALE:
3/4" = 1'-0"

MASTER DRAWING

SHEET NO.
9



REVISIONS	
DESCRIPTION	DATE:

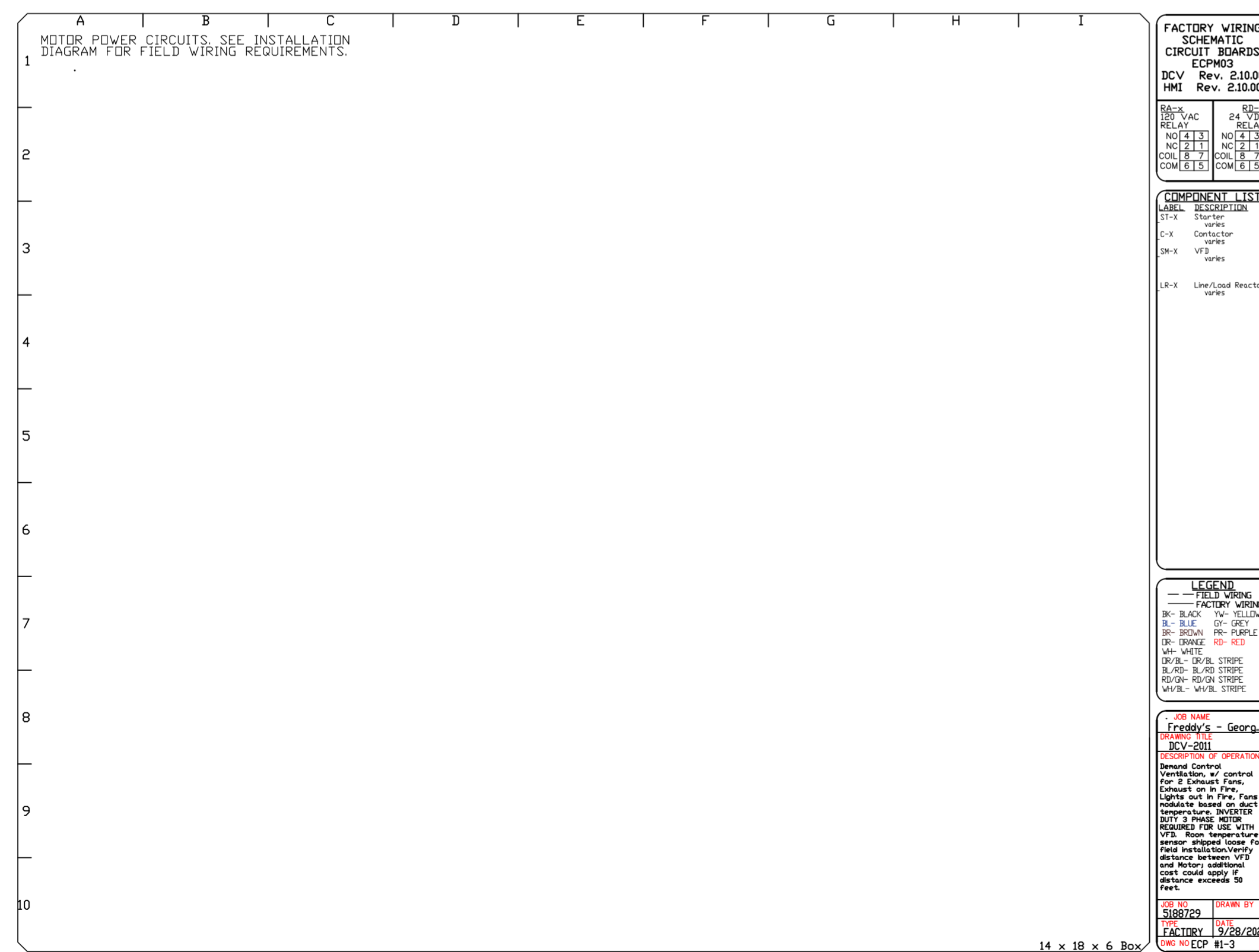
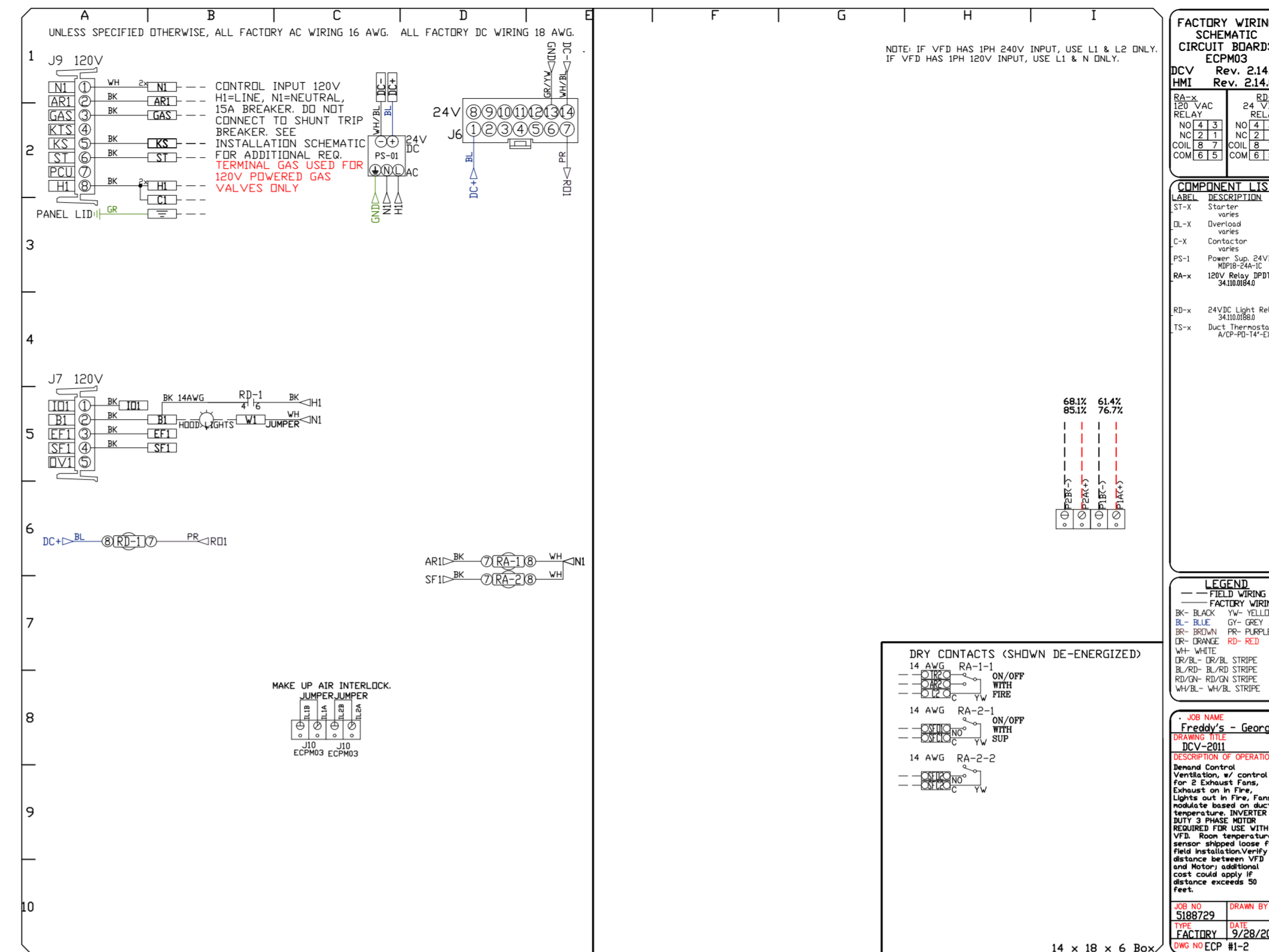
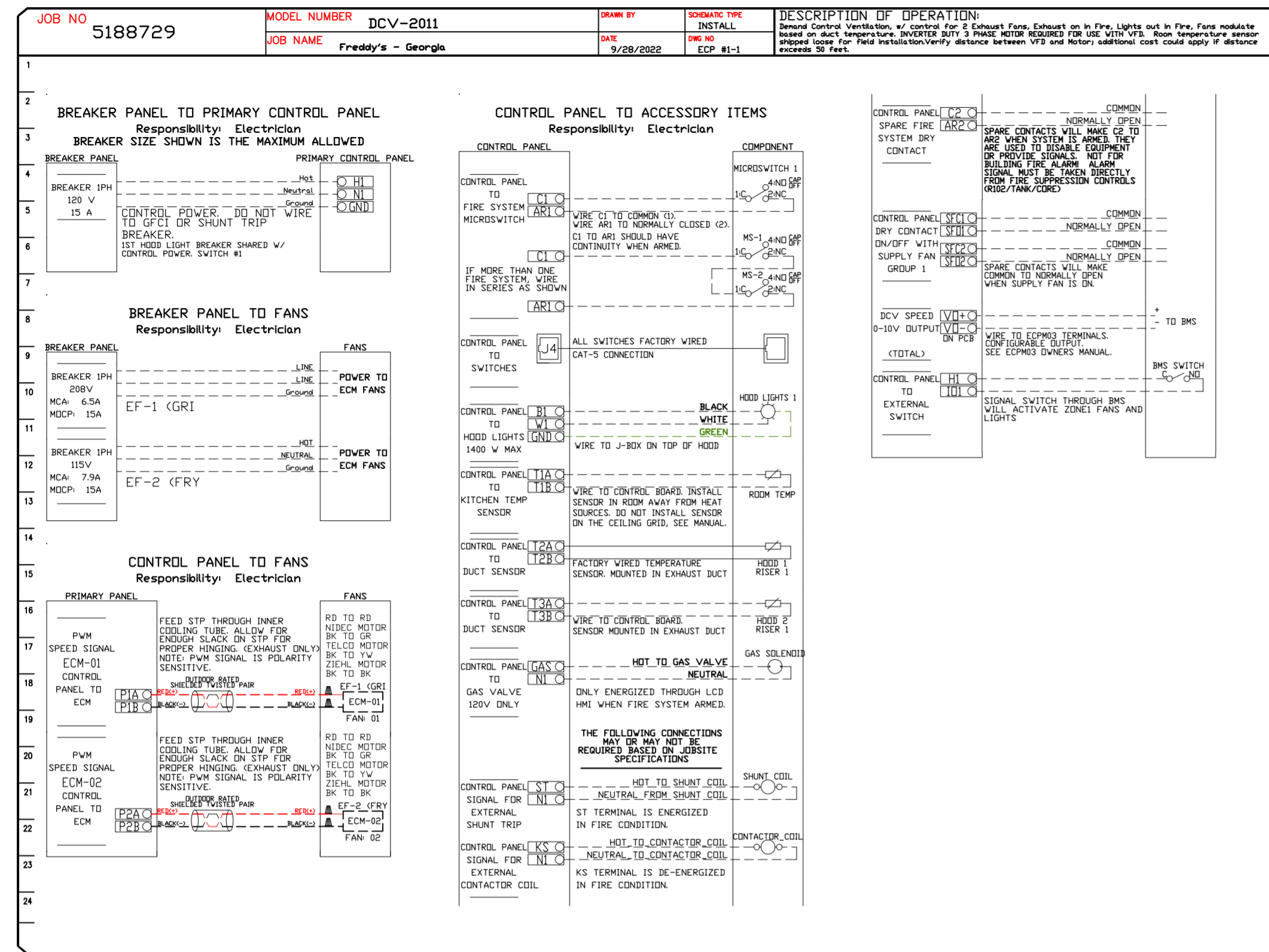
www.captiveair.com

1329 East Kemper Rd., Ste. 4210, Cincinnati, OH, 45246 PHONE: (513) 860-5555 EMAIL: reg120@captiveair.com

Freddy's - Georgia	
4245 US-78,	
LAGRANGE, GA, 30241	
DATE:	9/28/2022
DWG.#:	5188729
DRAWN BY:	
SCALE:	3/4" = 1'-0"
MASTER DRAWING	
SHEET NO.	
11	

ELECTRICAL PACKAGE - JOB#5188729

NO	TAG	PACKAGE #	LOCATION	SWITCHES		OPTION	FANS CONTROLLED					
				LOCATION	QUANTITY		FAN TAG	TYPE	#	HP	VOLT	FLA
1	ECP-1	DCV-2011	UTILITY CABINET LEFT	03 - UTILITY CABINET LEFT	1 LIGHT	SMART CONTROLS DCV	EF-1 (GRIDDLE)	EXHAUST	1	0.750	208	5.2
				HOOD # 1	1 FAN		EF-2 (FRYER)	EXHAUST	1	0.500	115	6.3



REVISIONS

NO.	DESCRIPTION	DATE
1		
2		
3		
4		

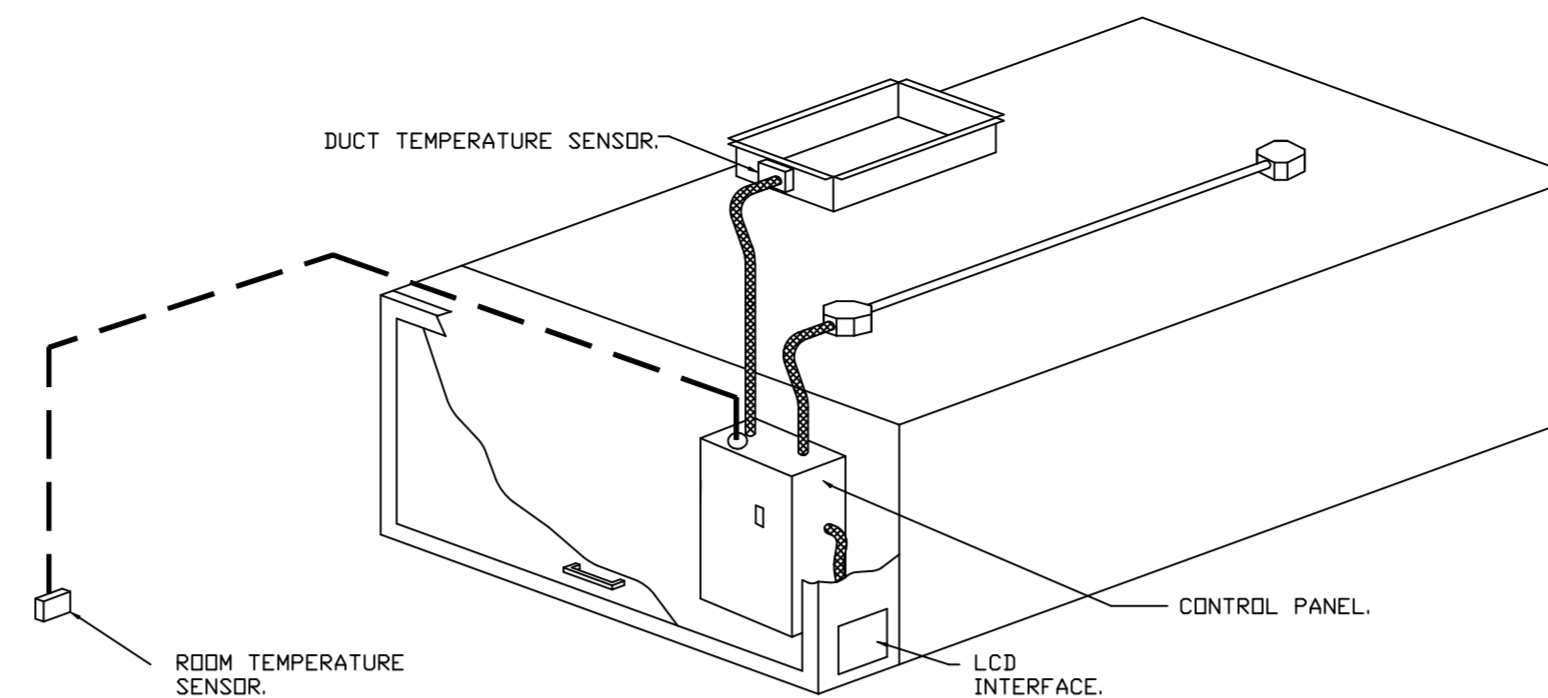


DATE: 9/28/2022
DWG.#: 5188729
DRAWN BY:
SCALE: 3/4" = 1'-0"
MASTER DRAWING

SHEET NO.
 13

DEMAND CONTROL VENTILATION HOOD CONTROL PANEL SPECIFICATIONS:

- CONTROLS SHALL BE LISTED BY ETL (UL 508A) AND SHALL COMPLY WITH DEMAND VENTILATION SYSTEM TURNDOWN REQUIREMENTS OUTLINED IN IECC 403.2.8 (2015).
- THE CONTROL ENCLOSURE SHALL BE NEMA 1 RATED AND LISTED FOR INSTALLATION INSIDE OF THE EXHAUST HOOD UTILITY CABINET. THE CONTROL ENCLOSURE MAY BE CONSTRUCTED OF STAINLESS STEEL OR PAINTED STEEL.
- TEMPERATURE PROBE(S) LOCATED IN THE EXHAUST DUCT RISER(S) SHALL BE CONSTRUCTED OF STAINLESS STEEL.
- A DIGITAL CONTROLLER SHALL BE PROVIDED TO ACTIVATE THE HOOD EXHAUST FANS DYNAMICALLY BASED ON A FIXED DIFFERENTIAL BETWEEN THE AMBIENT AND DUCT TEMPERATURES SENSORS. THIS FUNCTION SHALL MEET THE REQUIREMENTS OF IMC 507.1.1.
- A DIGITAL CONTROLLER SHALL PROVIDE ADJUSTABLE HYSTERESIS SETTINGS TO PREVENT CYCLING OF THE FANS AFTER THE COOKING APPLIANCES HAVE BEEN TURNED OFF AND/OR THE HEAT IN THE EXHAUST SYSTEM IS REDUCED.
- A DIGITAL CONTROLLER SHALL PROVIDE AN ADJUSTABLE MINIMUM FAN RUN-TIME SETTING TO PREVENT FAN CYCLING.
- VARIABLE FREQUENCY DRIVES (VFDs) SHALL BE PROVIDED FOR FANS AS REQUIRED. THE DIGITAL CONTROLLER SHALL MODULATE THE VFDs BETWEEN A MINIMUM SETPOINT AND A MAXIMUM SETPOINT ON DEMAND. THE DUCT TEMPERATURE SENSOR INPUT(S) TO THE DIGITAL CONTROLLER SHALL BE USED TO CALCULATE THE SPEED REFERENCE SIGNAL.
- THE VFD SPEED RANGE OF OPERATION SHALL BE FROM 0% TO 100% FOR THE SYSTEM, WITH THE ACTUAL MINIMUM SPEED SET AS REQUIRED TO MEET MINIMUM VENTILATION REQUIREMENTS.
- AN INTERNAL ALGORITHM TO THE DIGITAL CONTROLLER SHALL MODULATE SUPPLY FAN VFD SPEED PROPORTIONAL TO ALL EXHAUST FANS THAT ARE LOCATED IN THE SAME FAN GROUP AS THE SUPPLY FAN.
- THE SYSTEM SHALL OPERATE IN PREP MODE DURING LIGHT COOKING LOAD OR COOL DOWN MODE WHEN SUFFICIENT HEAT REMAINS UNDERNEATH THE HOOD SYSTEM AFTER COOKING OPERATIONS HAVE COMPLETED. OPERATION DURING EITHER OF THESE PERIODS WILL DISABLE THE SUPPLY FANS AND PROVIDE AN EXHAUST FAN SPEED THAT IS EQUAL TO THE MINIMUM VENTILATION REQUIREMENT.
- A DIGITAL CONTROLLER SHALL DISABLE THE SUPPLY FAN(S), ACTIVATE THE EXHAUST FAN(S), ACTIVATE THE APPLIANCE SHUNT TRIP, AND DISABLE AN ELECTRIC GAS VALVE AUTOMATICALLY WHEN FIRE CONDITION IS DETECTED ON A COVERED HOOD.
- A DIGITAL CONTROLLER SHALL ALLOW FOR EXTERNAL BMS FAN CONTROL VIA DRY CONTACT (EXTERNAL CONTROL SHALL NOT OVERRIDE FAN OPERATION LOGIC AS REQUIRED BY CODE).
- AN LCD INTERFACE SHALL BE PROVIDED WITH THE FOLLOWING FEATURES:
 - A. ON/OFF PUSH BUTTON FAN & LIGHT SWITCH ACTIVATION.
 - B. INTEGRATED GAS VALVE RESET FOR ELECTRONIC GAS VALVES (NO RESET RELAY REQUIRED).
 - C. VFD FAULT DISPLAY WITH AUDIBLE & VISUAL ALARM NOTIFICATION.
 - D. DUCT TEMPERATURE SENSOR FAILURE DETECTION WITH AUDIBLE & VISUAL ALARM NOTIFICATION.
 - E. MIS-WIRED DUCT TEMPERATURE SENSOR DETECTION WITH AUDIBLE & VISUAL ALARM NOTIFICATION.
 - F. A SINGLE LOW VOLTAGE CAT-5 RJ45 WIRING CONNECTION.
 - G. AN ENERGY SAVINGS INDICATOR THAT UTILIZES MEASURED KWH FROM THE VFDs.



TYPICAL HOOD CONTROL PANEL INSTALLATION

SEQUENCE OF OPERATIONS:

- THE HOOD CONTROL PANEL IS CAPABLE OF OPERATING IN ONE OR MORE OF THE FOLLOWING STATES AT ANY GIVEN TIME:
- **AUTOMATIC:** THE SYSTEM OPERATES BASED ON THE DIFFERENTIAL BETWEEN ROOM TEMPERATURE AND THE TEMPERATURE AT THE HOOD CAVITY OR EXHAUST DUCT COLLAR. FANS ACTIVATE AT A CONFIGURABLE TEMPERATURE DIFFERENTIAL THRESHOLD. DEPENDING ON THE JOB CONFIGURATION EACH FAN ZONE CAN BE CONFIGURED AS STATIC OR DYNAMIC. THESE TERMS REFER TO WHETHER A VARIABLE MOTOR (SUCH AS EC MOTORS OR VFD DRIVEN MOTORS) MODULATE WITH TEMPERATURE. IF THE PANEL IS EQUIPPED WITH VARIABLE SPEED FANS AND THE ZONE IS DEFINED AS "DYNAMIC", THESE WILL MODULATE WITHIN A USER-DEFINED RANGE BASED ON THE TEMPERATURE DIFFERENTIAL. PANELS EQUIPPED WITH VARIABLE SPEED FANS AND A FAN ZONE DEFINED AS "STATIC", FANS WILL RUN AT A SET SPEED CALCULATED FOR THE DRIVE. DEMAND CONTROL VENTILATION SYSTEMS ARE CAPABLE OF MODULATING EXHAUST AND MAKE UP AIR FAN SPEEDS PER THE REQUIREMENTS OUTLINED IN IECC 403.2.8.
 - **MANUAL:** THE SYSTEM OPERATES BASED ON HUMAN INPUT FROM AN HMI.
 - **SCHEDULE:** A WEEKLY SCHEDULE CAN BE SET TO RUN FANS FOR A SPECIFIED PERIOD THROUGHOUT THE DAY. THERE ARE THREE OCCUPIED TIMES PER DAY TO ALLOW FOR THE USER TO SET UP A TIME THAT IS SUITABLE TO THEIR NEEDS. ANY TIME THAT IS WITHIN THE DEFINED OCCUPIED TIME, THE SYSTEM WILL RUN AT MODULATION MODE AND FOLLOW THE FAN PROCEDURE ALGORITHM BASED ON TEMPERATURE DURING THIS TIME. DURING UNOCCUPIED TIME, THE SYSTEM WILL HAVE AN EXTRA OFFSET TO PREVENT UNINTENDED ACTIVATION OF THE SYSTEM DURING A TIME WHERE THE SYSTEM IS NOT BEING OCCUPIED.
 - **OTHER:** THE SYSTEM OPERATES BASED ON THE INPUT FROM AN EXTERNAL SOURCE (DDC, BMS OR HARD-WIRED INTERLOCK).
 - **FIRE:** UPON ACTIVATION OF THE HOOD FIRE SUPPRESSION SYSTEM, THE EXHAUST FAN WILL COME ON OR CONTINUE TO RUN, THE HOOD MAKEUP AIR WILL SHUTDOWN, AND A SIGNAL WILL BE SENT FOR ACTIVATING THE SHUNT TRIP BREAKER PROVIDED BY THE ELECTRICIAN. FUEL GAS WILL SHUT OFF VIA A MECHANICAL/ELECTRICAL GAS VALVE ACTUATED BY THE HOOD FIRE SUPPRESSION SYSTEM.

REVISIONS	
DESCRIPTION	DATE

Air Solutions

www.captiveair.com

1329 East Kemper Rd., Ste. 4210, Cincinnati, OH, 45246 PHONE: (513) 860-5555 EMAIL: reg120@captiveair.com

Freddy's - Georgia

4245 US-78,

LAGRANGE, GA, 30241

DATE: 9/28/2022
DWG.#: 5188729
DRAWN BY:
SCALE: 3/4" = 1'-0"
MASTER DRAWING
SHEET NO. 14

SYSTEM DESIGN VERIFICATION (SDV)

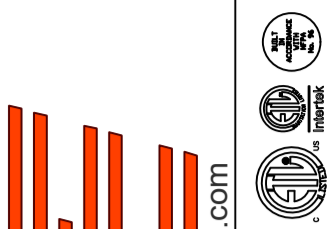
IF ORDERED, CAS SERVICE WILL PERFORM A SYSTEM DESIGN VERIFICATION (SDV) ONCE ALL EQUIPMENT HAS HAD A COMPLETE START UP PER THE OPERATION AND INSTALLATION MANUAL. TYPICALLY, THE SDV WILL BE PERFORMED AFTER ALL INSPECTIONS ARE COMPLETE.

ANY FIELD RELATED DISCREPANCIES THAT ARE DISCOVERED DURING THE SDV WILL BE BROUGHT TO THE ATTENTION OF THE GENERAL CONTRACTOR AND CORRESPONDING TRADES ON SITE. THESE ISSUES WILL BE DOCUMENTED AND FORWARDED TO THE APPROPRIATE SALES OFFICE. IF CAS SERVICE HAS TO RESOLVE A DISCREPANCY THAT IS A FIELD ISSUE, THE GENERAL CONTRACTOR WILL BE NOTIFIED AND BILLED FOR THE WORK. SHOULD A RETURN TRIP BE REQUIRED DUE TO ANY FIELD RELATED DISCREPANCY THAT CANNOT BE RESOLVED DURING THE SDV, THERE WILL BE ADDITIONAL TRIP CHARGES.

DURING THE SDV, CAS SERVICE WILL ADDRESS ANY DISCREPANCY THAT IS THE FAULT OF THE MANUFACTURER. SHOULD A RETURN TRIP BE REQUIRED, THE GENERAL CONTRACTOR AND APPROPRIATE SALES OFFICE WILL BE NOTIFIED. THERE WILL BE NO ADDITIONAL CHARGES FOR MANUFACTURER DISCREPANCIES.

REVISIONS

DESCRIPTION	DATE:
Δ	
Δ	
Δ	
Δ	
Δ	



www.captiveair.com
www.captiveair.com
1329 East Kemper Rd., Ste. 4210, Cincinnati, OH, 45246 PHONE: (513) 860-5555 EMAIL: reg120@captiveair.com

Freddy's - Georgia
4245 US-78,
LAGRANGE, GA, 30241

DATE: 9/28/2022

DWG.#:
5188729

DRAWN BY:

SCALE:
3/4" = 1'-0"

MASTER DRAWING

SHEET NO.
15