





13001.20003

OWNER CHANGES	07.01.20
RTU UPDATES	09.02.20

CONTRACT DATE: 01.12.202  
 BUILDING TYPE: EXPLORER MED 4  
 PLAN VERSION: FEBRUARY 201  
 SITE NUMBER: 31408  
 STORE NUMBER: -

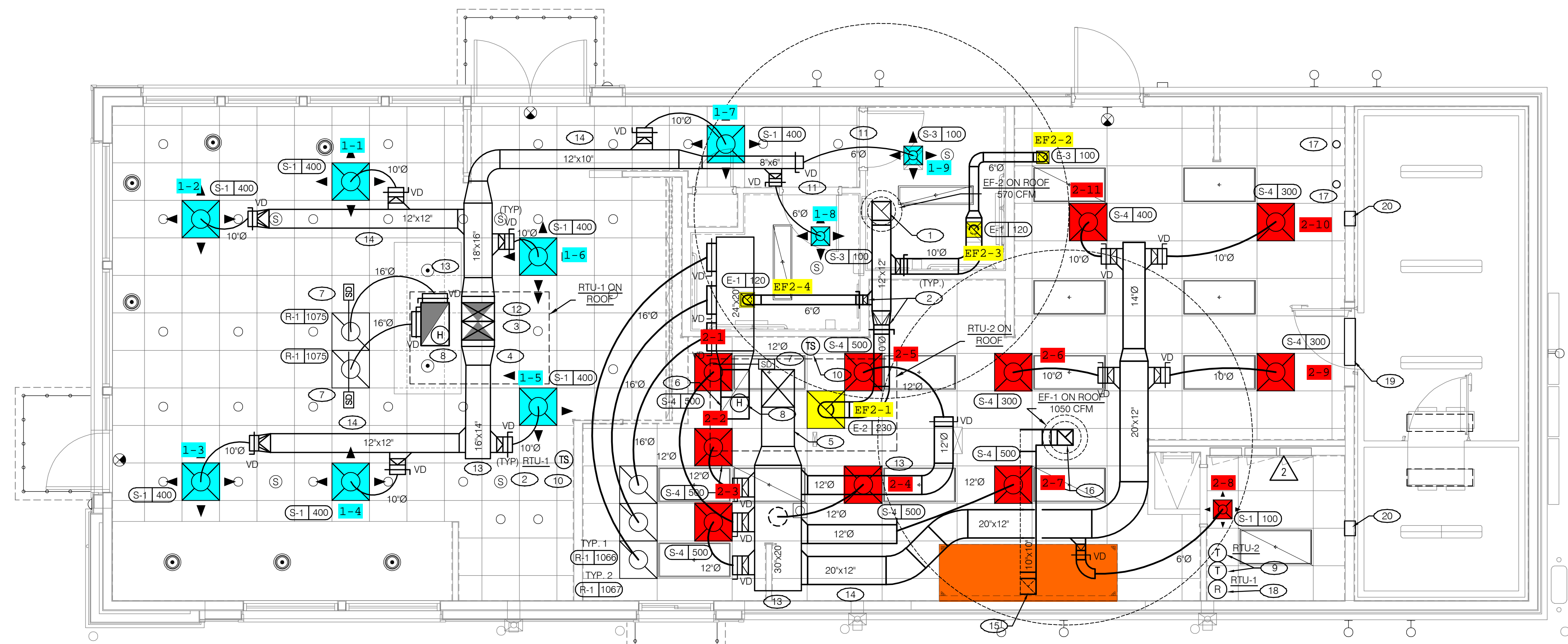
**TACO BELL**  
 MOUNT PLEASANT ROAD  
 CHESAPEAKE, VA



**DUCT AND DIFFUSER FLOOR PLAN**

**M2.0**

PLOT DATE: 9-02-2



**DUCT AND DIFFUSER PLAN** 1/4"=1'-0" **A**

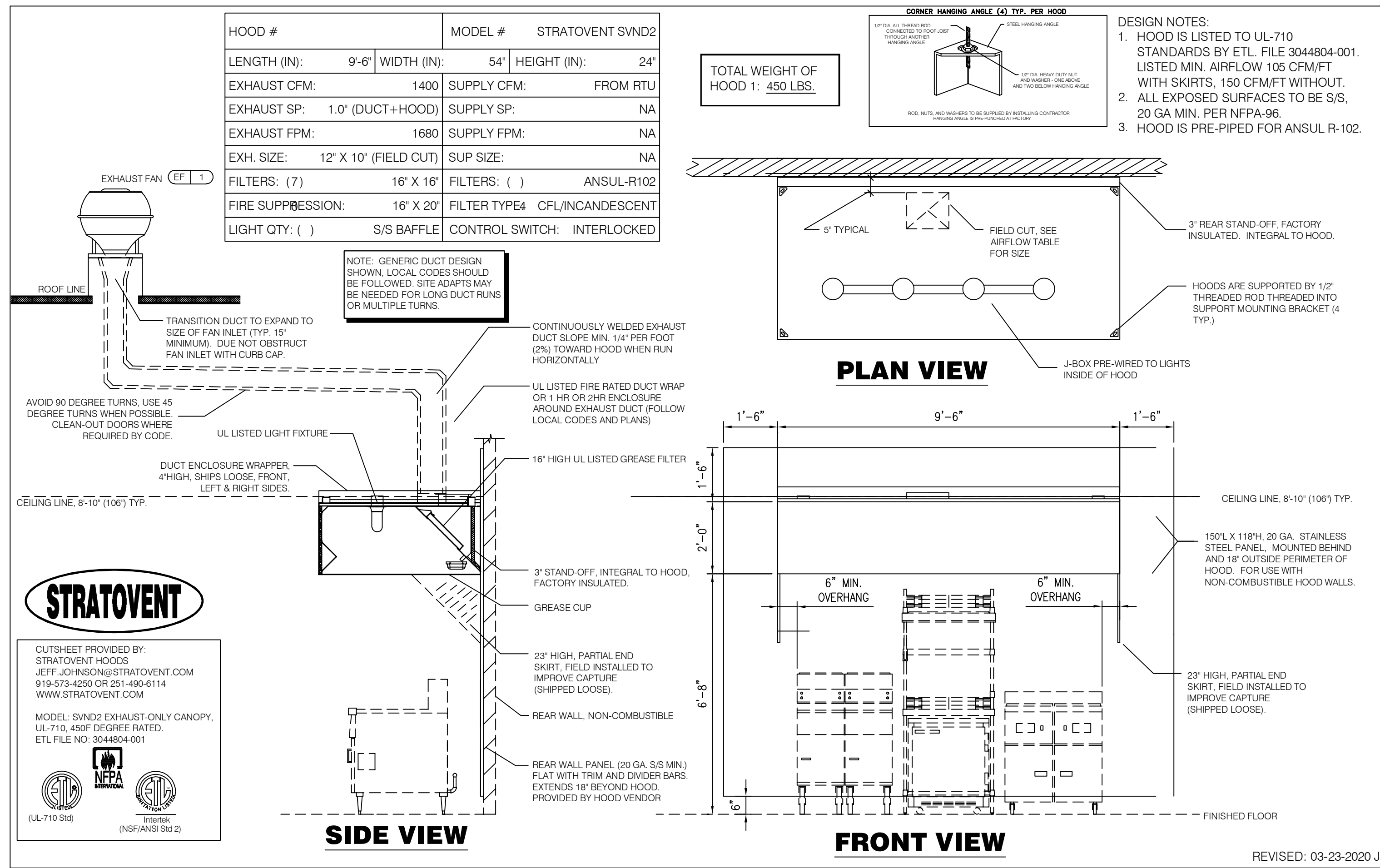
- DINING ROOM LIGHT FIXTURE LOCATIONS ARE CRITICAL. COORDINATE DUCTWORK LOCATIONS SO AS NOT TO CONFLICT WITH LIGHT FIXTURE LOCATIONS.
- THERMOSTATS SHALL BE PROGRAMMABLE THERMOSTAT WITH SUBBASE, REMOTE TEMPERATURE SENSOR, AND REMOTE HUMIDITY SENSOR. (PROVIDED WITH TRANE PACKAGE).
- HUMIDITY SENSOR APPLICATION IS VARIABLE PER SITE SPECIFIC CONDITIONS. REFER TO HVAC UNIT SCHEDULE, 1/M1.0, FOR APPLICATION CONDITIONS.
- COORDINATE DUCTWORK LOCATIONS WITH LIGHTING AND STRUCTURAL.

- 12"x12" EXHAUST AIR DUCT UP THROUGH ROOF TO EF-2.
- SEE DETAIL 8 ON DRAWING M4.0 FOR SUPPLY AIR TAKE-OFF TO CEILING DIFFUSERS. RETURN OR EXHAUST AIR TAKE-OFFS SHALL BE SIMILAR.
- 24"x20" SUPPLY AIR DUCT UP. CONNECT TO SUPPLY AIR PLENUM AT ROOFTOP UNIT RTU-1.
- 26"x18" RETURN AIR DUCT UP. CONNECT TO RETURN AIR PLENUM AT ROOFTOP UNIT RTU-1.
- 24"x20" SUPPLY AIR DUCT UP. CONNECT TO SUPPLY AIR PLENUM AT ROOFTOP UNIT RTU-2.
- 26"x18" RETURN AIR DUCT UP. CONNECT TO RETURN AIR PLENUM AT ROOFTOP UNIT RTU-2.
- FURNISH AND INSTALL SMOKE DETECTOR IN THE RETURN AIR DUCT, IN ACCORDANCE WITH LOCAL CODES. DUCT SMOKE DETECTOR WIRED BY ELECTRICAL CONTRACTOR, SEE SHEET E3.2.
- HUMIDITY SENSOR (REMOTE). HUMIDITY SENSOR LOCATION SHALL BE PLACED IN RETURN AIR DUCTWORK. VERIFY EXACT LOCATION. SEE 9/M4.0.
- LOCATE THERMOSTAT CONTROLS ON WALL IN OFFICE AT 48" A.F.F. COORD LOCATION WITH LIGHT SWITCHES.
- MOUNT THERMOSTAT REMOTE SENSOR AT 6" BELOW LAY-IN CEILING.
- UNDERCUT RESTROOM DOORS MIN. 3/4" FOR MAKE-UP AIR.
- PROVIDE SPLITTER DAMPER AND 90 DEGREE ELBOW WITH TURNING VANES.
- RUN DUCTWORK BETWEEN TRUSSES AS HIGH AS POSSIBLE UNDER ROOF JOISTS.
- RUN DUCT THROUGH OPEN WEBBING OF ROOF JOISTS (WHERE POSSIBLE). COORDINATE WITH TRUSS DESIGN PRIOR TO DUCTWORK FABRICATION.
- 10"x10" EXHAUST AIR DUCT DOWN AND TRANSITION TO FIELD CUT EXHAUST CONNECTION AT HOOD.
- EXHAUST DUCT SHALL RUN BETWEEN ROOF JOISTS TO CONNECT TO ROOF EXHAUST FAN EF-1. SEE HOOD DETAILS ON DRAWING M3.0. SEE DETAIL 15 ON SHEET M4.0 FOR FIRE PROTECTION OF DUCT WORK. SEE DETAIL 15 ON SHEET M4.0 FOR EXHAUST DUCT TRANSITION.
- FURNISH AND INSTALL 3" PVC WATER HEATER INTAKE AND FLUE VENT TERMINATION ON ROOF. COORDINATE WORK WITH ALL TRADES.
- NEW SMOKE DETECTOR RESET SWITCH WITH KEY. MFR. IS "SYSTEM SENSOR" MODEL # RT3151 KEY. MOUNT NEXT TO THERMOSTATS @ 48" A.F.F. - INSTALL PER MFR. SPECIFICATIONS.
- ACCESS OPENING TO SPACE ABOVE WALK-IN. SEE SHEET A7.1.
- AIR TRANSFER GRILLES ELEVATION AT 9'-0" OR HIGHER.

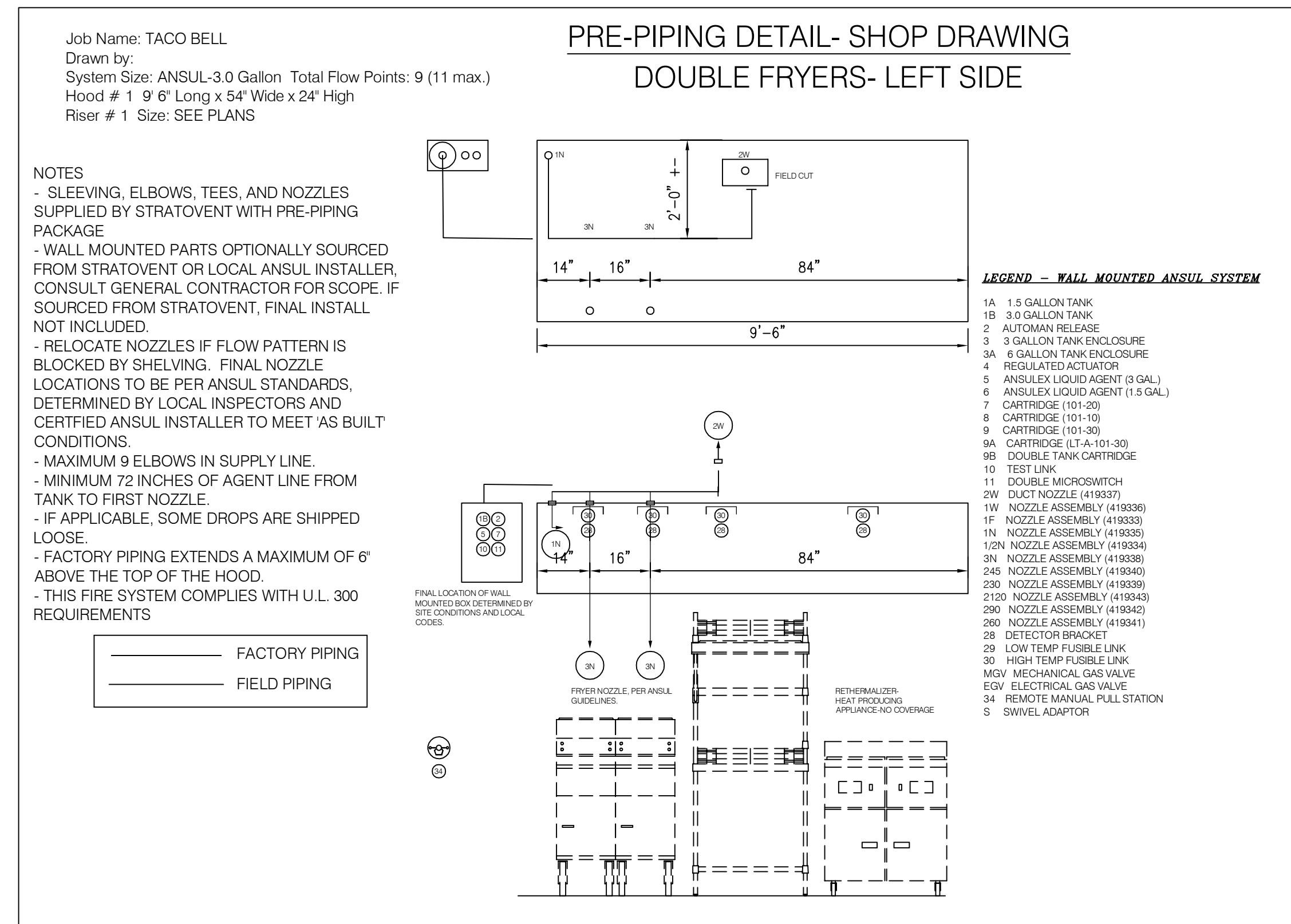
**NOT USED** **F**

**GENERAL NOTES** **E**

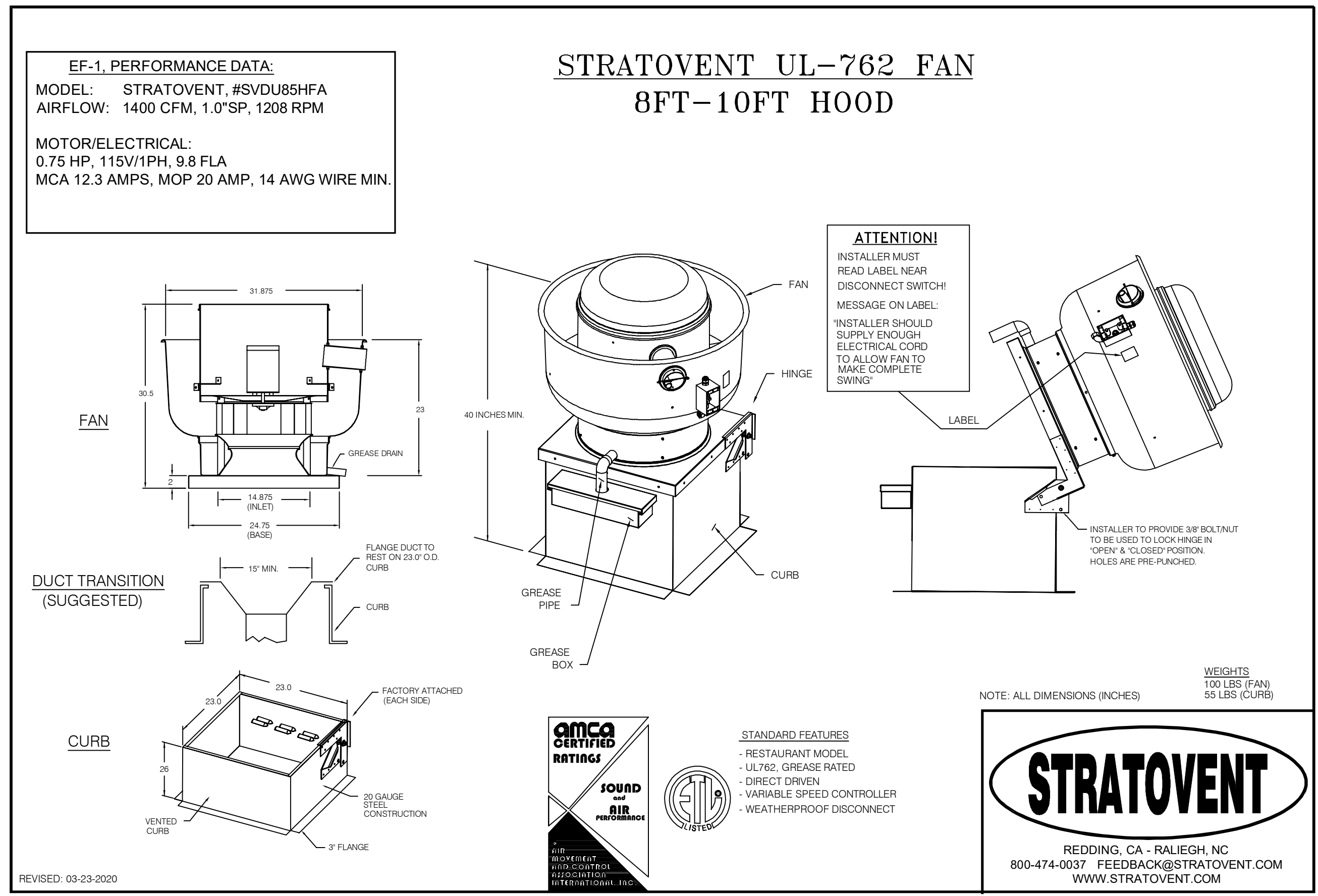
**KEY NOTES** **B**



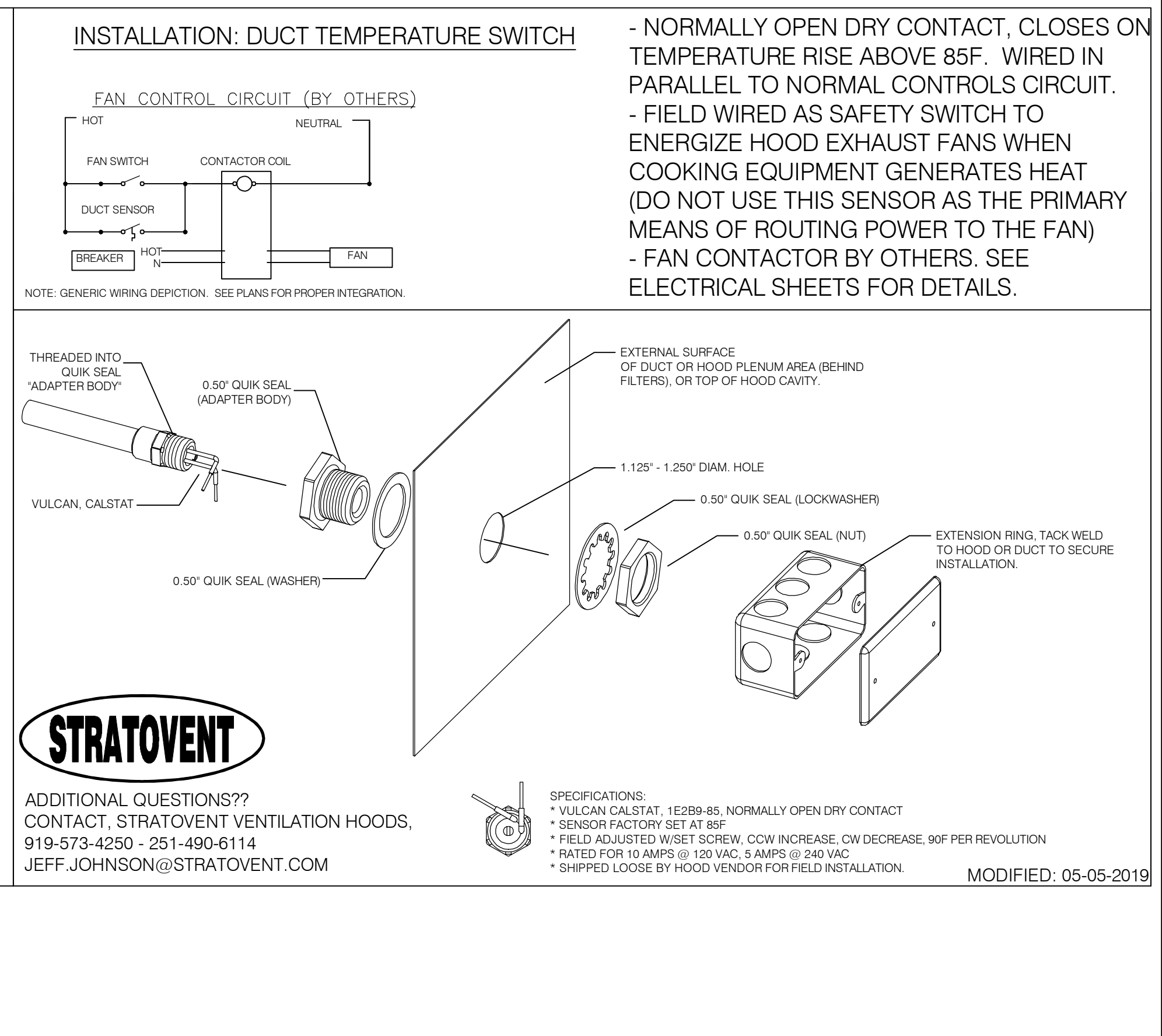
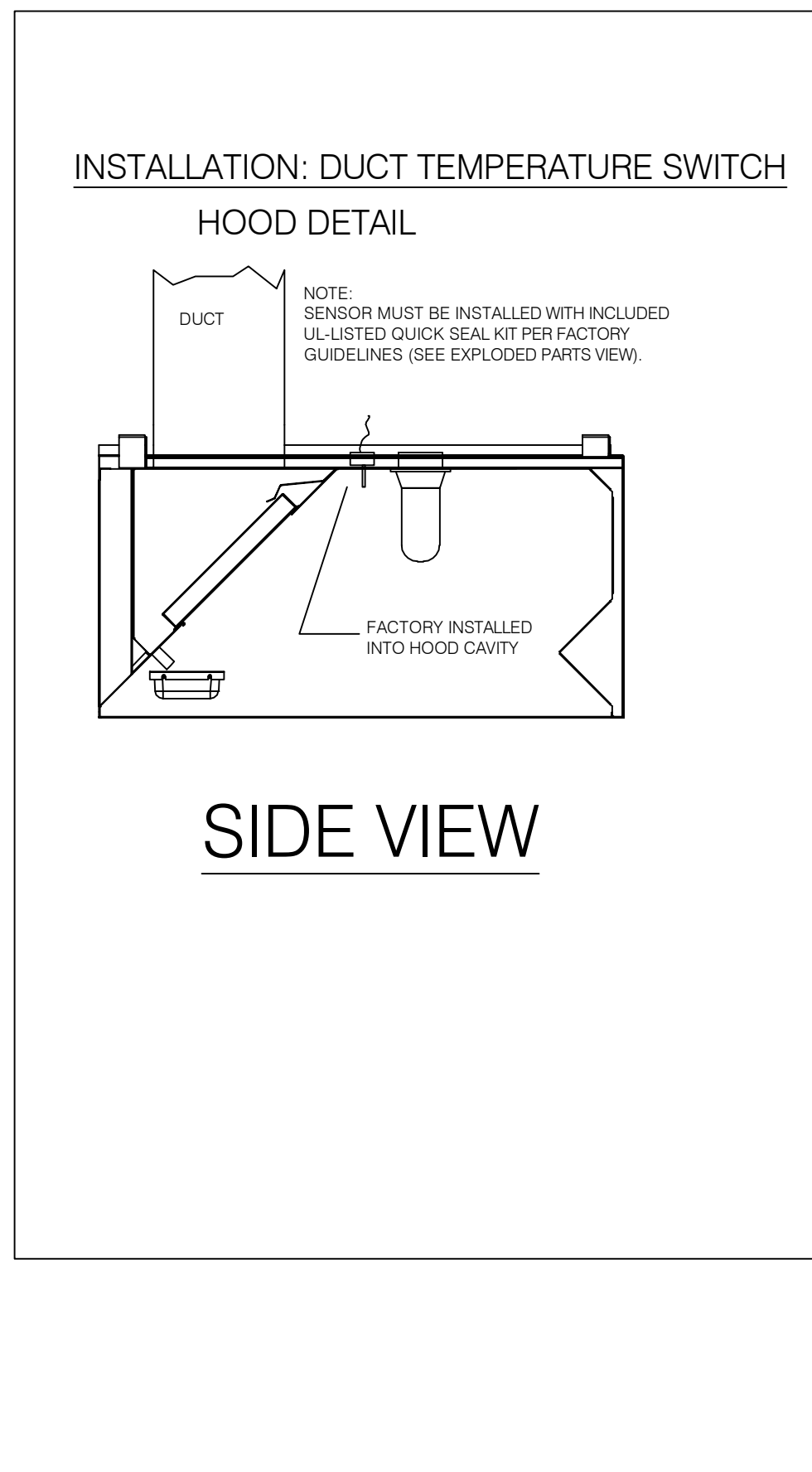
TACO BELL HOOD SECTION AND DETAIL N.T.S. 2



TACO BELL HOOD FIRE SUPPRESSION SYSTEM PLAN N.T.S. 16



TACO BELL HOOD EXHASUT FAN N.T.S. 14



HEAT SENSOR ATTACHMENT N.T.S. 10



FOR INFORMATION ONLY

13001.20003

- △
- △
- △
- △
- △
- △
- △
- △
- △
- △

CONTRACT DATE: 01.12.202  
 BUILDING TYPE: EXPLORER MED 41  
 PLAN VERSION: FEBRUARY 201  
 SITE NUMBER: 31408  
 STORE NUMBER:

TACO BELL  
 MOUNT PLEASANT ROAD  
 CHESAPEAKE, VA



**HOOD DRAWINGS PLANS AND SECTIONS**

**M3.0**

PLOT DATE: 1-26-2

