

SDV Job #: 4839079 - Part 2 of 3 - Jack Stack - Lenexa, KS

Service Region: 378 - Kansas City Service
Service Person: Clint Tholen

Customer Number: 548760 **Customer Name:** Region 98 - HBT

Address: Jack Stack - Lenexa
 8721 Ryckert St
 Lenexa, KS 66219

Region Job #: 4633218
Region Job Name: Jack Stack - Lenexa, KS

Sales Region: 98 - HBT Foodservice
Sales Person: Michael Conroy

Created By: Clint Tholen **Creation Date:** 8/30/2021 11:20 AM
Last Modified By: Clint Tholen **Last Modified Date:** 8/30/2021 11:26 PM

Dining Room Pressure: 0.0 **Kitchen Pressure:** 0.0
Hours On Job: 0.0 **Extra Hours:** 0.0

Completed: Yes **Completed By:** Clint Tholen
Completion Date: 8/30/2021 11:26 PM

Hood Group 4

Exhaust CFM: Design = 788 Initial = 741 Final = 741 (94.0% of design)
Supply CFM: Design = 630 Initial = 604 Final = 551 (87.5% of design)

Hood 8 (ITEM 140) (ITEM 140)

Model: 5424ND-2-PSP-F **Length:** 4' 6.00"
Exhaust CFM: Design = 788 Initial = 741 Final = 741 (94.0% of design)

Installation

Hung Using appropriate material to safely secure hood.	Design: Yes	Actual: Yes
COOKING EQUIPMENT ON AND OPERATING	Design: Yes	Actual: Yes
COOKING EQUIPMENT INSTALLED AS CLOSE TO BACK WALL AS POSSIBLE	Design: Yes	Actual: Yes
END PANELS INSTALLED CORRECTLY	Design: Yes	Actual: No

Filters

Type: Captrate Solo

Filter 1 Fan: #8 - DU50HFA (ITEM 140.1)	Size: 16x16	Initial Velocity: 157 fpm	Final Velocity: 157 fpm	Initial CFM: 254	Final CFM: 254
Filter 2 Fan: #8 - DU50HFA (ITEM 140.1)	Size: 16x16	Initial Velocity: 157 fpm	Final Velocity: 157 fpm	Initial CFM: 254	Final CFM: 254
Filter 3 Fan: #8 - DU50HFA (ITEM 140.1)	Size: 16x16	Initial Velocity: 144 fpm	Final Velocity: 144 fpm	Initial CFM: 233	Final CFM: 233

Supply

Supply CFM: Design = 630 Initial = 604 Actual = 551 (87.5% of design)
 Fan: #15 - D76 (MUA-5 (140/143))

PSP 1

Orientation: Front **Length:** 4' 6.00" **Width:** 14.00" **Banks:** 1
Blanks: 1
CFM: Design = 630 Initial = 604 Final = 551 (87.5% of design)

Velocity: Design = 144 Initial = 138 Final = 125 (86.8% of design)

Readings:

1: Initial: 129 fpm, Final: 106 fpm 2: Initial: 146 fpm, Final: 105 fpm 3: Initial: 155 fpm, Final: 126 fpm
4: Initial: 143 fpm, Final: 143 fpm 5: Initial: 126 fpm, Final: 138 fpm 6: Initial: 129 fpm, Final: 138 fpm

Hood Group 5

Exhaust CFM: Design = 700 Initial = 777 Final = 667 (95.3% of design)
Supply CFM: Design = 600 Initial = 779 Final = 727 (121.2% of design)

Hood 9 (ITEM 143) (ITEM 143)

Model: 5424ND-2-PSP-F **Length:** 4' 0.00"
Exhaust CFM: Design = 700 Initial = 777 Final = 667 (95.3% of design)

Installation

Hung Using appropriate material to safely secure hood.	Design: Yes	Actual: Yes
COOKING EQUIPMENT ON AND OPERATING	Design: Yes	Actual: Yes
COOKING EQUIPMENT INSTALLED AS CLOSE TO BACK WALL AS POSSIBLE	Design: Yes	Actual: Yes
END PANELS INSTALLED CORRECTLY	Design: Yes	Actual: Yes

Filters

Type: Captrate Solo

Filter 1 Size: 16x20 Initial Velocity: 193 fpm Final Velocity: 168 fpm Initial CFM: 401 Final CFM: 349
Fan: #9 - DU50HFA (ITEM 143.1)

Filter 2 Size: 16x20 Initial Velocity: 181 fpm Final Velocity: 153 fpm Initial CFM: 376 Final CFM: 318
Fan: #9 - DU50HFA (ITEM 143.1)

Supply

Supply CFM: Design = 600 Initial = 779 Actual = 727 (121.2% of design)
Fan: #15 - D76 (MUA-5 (140/143))

PSP 1

Orientation: Front **Length:** 5' 0.00" **Width:** 12.00" **Banks:** 1
Blanks: 1
CFM: Design = 600 Initial = 779 Final = 727 (121.2% of design)
Velocity: Design = 155 Initial = 201 Final = 187 (120.6% of design)

Readings:

1: Initial: 243 fpm, Final: 212 fpm 2: Initial: 199 fpm, Final: 202 fpm 3: Initial: 196 fpm, Final: 191 fpm
4: Initial: 197 fpm, Final: 165 fpm 5: Initial: 202 fpm, Final: 170 fpm 6: Initial: 170 fpm, Final: 186 fpm

Hood Group 6

Exhaust CFM: Design = 1912 Initial = 2250 Final = 1759 (92.0% of design)
Supply CFM: Design = 1530 Initial = 1736 Final = 1459 (95.4% of design)

Hood 4 (ITEM 22) (ITEM 22)

Model: 6024ND-2-PSP-F **Length:** 8' 6.00"
Exhaust CFM: Design = 1912 Initial = 2250 Final = 1759 (92.0% of design)

Installation

Hung Using appropriate material to safely secure hood.	Design: Yes	Actual: Yes
COOKING EQUIPMENT ON AND OPERATING	Design: Yes	Actual: Yes
COOKING EQUIPMENT INSTALLED AS CLOSE TO BACK WALL AS POSSIBLE	Design: Yes	Actual: Yes
END PANELS INSTALLED CORRECTLY	Design: Yes	Actual: No

Filters

Type: Captrate Solo

Filter 1 Fan: #4 - DU85HFA (ITEM 22.1)	Size: 20x16	Initial Velocity: 179 fpm	Final Velocity: 140 fpm	Initial CFM: 372	Final CFM: 291
Filter 2 Fan: #4 - DU85HFA (ITEM 22.1)	Size: 20x16	Initial Velocity: 167 fpm	Final Velocity: 144 fpm	Initial CFM: 347	Final CFM: 299
Filter 3 Fan: #4 - DU85HFA (ITEM 22.1)	Size: 20x16	Initial Velocity: 173 fpm	Final Velocity: 133 fpm	Initial CFM: 359	Final CFM: 276
Filter 4 Fan: #4 - DU85HFA (ITEM 22.1)	Size: 20x16	Initial Velocity: 214 fpm	Final Velocity: 158 fpm	Initial CFM: 444	Final CFM: 328
Filter 5 Fan: #4 - DU85HFA (ITEM 22.1)	Size: 20x16	Initial Velocity: 177 fpm	Final Velocity: 140 fpm	Initial CFM: 367	Final CFM: 291
Filter 6 Fan: #4 - DU85HFA (ITEM 22.1)	Size: 20x16	Initial Velocity: 174 fpm	Final Velocity: 132 fpm	Initial CFM: 361	Final CFM: 274

Supply

Supply CFM: Design = 1530 Initial = 1736 Actual = 1459 (95.4% of design)
Fan: #12 - A1-D.250-18Z (MUA-2 (21/22))

PSP 1

Orientation: Front **Length:** 9' 7.00" **Width:** 14.00" **Banks:** 1
Blanks: 1
CFM: Design = 1530 Initial = 1736 Final = 1459 (95.4% of design)
Velocity: Design = 158 Initial = 178 Final = 150 (94.9% of design)

Readings:

1: Initial: 169 fpm, Final: 168 fpm 2: Initial: 150 fpm, Final: 122 fpm 3: Initial: 143 fpm, Final: 130 fpm
4: Initial: 154 fpm, Final: 113 fpm 5: Initial: 186 fpm, Final: 165 fpm 6: Initial: 211 fpm, Final: 172 fpm
7: Initial: 166 fpm, Final: 146 fpm 8: Initial: 163 fpm, Final: 130 fpm 9: Initial: 195 fpm, Final: 131 fpm
10: Initial: 250 fpm, Final: 225 fpm

Hood Group 9

Exhaust CFM: Design = 1500 Initial = 2084 Final = 1524 (101.6% of design)
Supply CFM: Design = 1200 Initial = 1869 Final = 1415 (117.9% of design)

Hood 3 (ITEM 21) (ITEM 21)

Model: 3624ND-2-PSP-F **Length:** 6' 8.00"
Exhaust CFM: Design = 1500 Initial = 2084 Final = 1524 (101.6% of design)

Installation

Hung Using appropriate material to safely secure hood.	Design: Yes	Actual: Yes
COOKING EQUIPMENT ON AND OPERATING	Design: Yes	Actual: Yes
COOKING EQUIPMENT INSTALLED AS CLOSE TO BACK WALL AS POSSIBLE	Design: Yes	Actual: Yes

Filters

Type: Captrate Solo

Filter 1 Fan: #3 - DU85HFA (ITEM 21.1)	Size: 20x16	Initial Velocity: 239 fpm	Final Velocity: 169 fpm	Initial CFM: 496	Final CFM: 351
Filter 2 Fan: #3 - DU85HFA (ITEM 21.1)	Size: 20x16	Initial Velocity: 267 fpm	Final Velocity: 200 fpm	Initial CFM: 554	Final CFM: 415
Filter 3 Fan: #3 - DU85HFA (ITEM 21.1)	Size: 20x16	Initial Velocity: 246 fpm	Final Velocity: 185 fpm	Initial CFM: 511	Final CFM: 384
Filter 4 Fan: #3 - DU85HFA (ITEM 21.1)	Size: 20x16	Initial Velocity: 252 fpm	Final Velocity: 180 fpm	Initial CFM: 523	Final CFM: 374

Supply

Supply CFM: Design = 1200 Initial = 1869 Actual = 1415 (117.9% of design)
Fan: #12 - A1-D.250-18Z (MUA-2 (21/22))

PSP 1

Orientation: Front **Length:** 6' 8.00" **Width:** 16.00" **Banks:** 1
Blanks: 1
CFM: Design = 1200 Initial = 1869 Final = 1415 (117.9% of design)
Velocity: Design = 158 Initial = 245 Final = 186 (117.7% of design)

Readings:

1: Initial: 252 fpm, Final: 157 fpm 2: Initial: 220 fpm, Final: 196 fpm 3: Initial: 203 fpm, Final: 176 fpm
4: Initial: 232 fpm, Final: 188 fpm 5: Initial: 255 fpm, Final: 190 fpm 6: Initial: 237 fpm, Final: 169 fpm
7: Initial: 259 fpm, Final: 213 fpm 8: Initial: 309 fpm, Final: 200 fpm

Fans

Fan 3 - DU85HFA (ITEM 21.1) (ITEM 21.1)

Model: DU85HFA

Other Notes:

N/A



Exhaust

Exhaust CFM:	Design = 1500	Actual = 1524	(101.6% of design)
Record the ECM Speed			Actual: 73
VOLTS	Design: 208		Actual: 209
HP	Design: 1		Actual: 1
HUB SET SCREW TIGHT	Design: Yes		Actual: Yes
FAN LEVEL	Design: Yes		Actual: Yes
ROTATION	Design: Correct		Actual: Correct
FAN VIBRATION	Design: Good		Actual: Good
RPM - DESIGN	Design: 1490		Actual: 1314
RPM - MAX	Design: 1900		Actual: N/A
RPM - MAX RECOMMENDED	Design: 1600		Actual: N/A
FLA	Design: 6.9		Actual: 4.4
OVERLOAD SET POINT	Design: 6.9		Actual: N/A
PHASE	Design: 1		Actual: 1
FAN WITHIN 5 MILES OF COAST			Actual: No
HINGE KIT INSTALLED	Design: Yes		Actual: Yes
INSPECT ALL EXTERIOR SIDES OF UNIT. ANY VISIBLE DAMAGE	Design: No		Actual: No
SPEED CONTROL VOLTAGE	Design: 65		Actual: N/A

Fan 4 - DU85HFA (ITEM 22.1) (ITEM 22.1)

Model: DU85HFA

Exhaust

Exhaust CFM:	Design = 1912	Actual = 1759	(92.0% of design)
---------------------	---------------	---------------	-------------------

Other Notes:

N/A



Record the ECM Speed		Actual: 62
VOLTS	Design: 208	Actual: 209
HP	Design: 1	Actual: 1
HUB SET SCREW TIGHT	Design: Yes	Actual: Yes
FAN LEVEL	Design: Yes	Actual: Yes
ROTATION	Design: Correct	Actual: Correct
FAN VIBRATION	Design: Good	Actual: Good
RPM - DESIGN	Design: 1603	Actual: 1116
RPM - MAX	Design: 1900	Actual: N/A
RPM - MAX RECOMMENDED	Design: 1600	Actual: N/A
FLA	Design: 6.9	Actual: 4.8
OVERLOAD SET POINT	Design: 6.9	Actual: N/A
PHASE	Design: 1	Actual: 1
FAN WITHIN 5 MILES OF COAST		Actual: No
HINGE KIT INSTALLED	Design: Yes	Actual: Yes
INSPECT ALL EXTERIOR SIDES OF UNIT. ANY VISIBLE DAMAGE	Design: No	Actual: No
SPEED CONTROL VOLTAGE	Design: 65	Actual: N/A

Fan 8 - DU50HFA (ITEM 140.1) (ITEM 140.1)

Model: DU50HFA

Other Notes:

N/A



Exhaust

Exhaust CFM:	Design = 788	Actual = 741	(94.0% of design)
Record the ECM Speed			Actual: 75
VOLTS	Design: 208		Actual: 209
HP	Design: 0.5		Actual: 0.5
HUB SET SCREW TIGHT	Design: Yes		Actual: Yes
FAN LEVEL	Design: Yes		Actual: Yes
ROTATION	Design: Correct		Actual: Correct
FAN VIBRATION	Design: Good		Actual: Good
RPM - DESIGN	Design: 1602		Actual: 1350
RPM - MAX	Design: 2000		Actual: N/A
RPM - MAX RECOMMENDED	Design: 1600		Actual: N/A
FLA	Design: 3.8		Actual: 2.9
OVERLOAD SET POINT	Design: 3.8		Actual: N/A
PHASE	Design: 1		Actual: 1
FAN WITHIN 5 MILES OF COAST			Actual: No
HINGE KIT INSTALLED	Design: Yes		Actual: Yes
INSPECT ALL EXTERIOR SIDES OF UNIT. ANY VISIBLE DAMAGE	Design: No		Actual: No
SPEED CONTROL VOLTAGE	Design: 65		Actual: N/A

Fan 9 - DU50HFA (ITEM 143.1) (ITEM 143.1)

Model: DU50HFA

Other Notes:

N/A



Exhaust

Exhaust CFM:	Design = 627	Actual = 667	(106.4% of design)
Record the ECM Speed			Actual: 78
VOLTS	Design: 208		Actual: 209
HP	Design: 0.5		Actual: 0.5
HUB SET SCREW TIGHT	Design: Yes		Actual: Yes
FAN LEVEL	Design: Yes		Actual: Yes
ROTATION	Design: Correct		Actual: Correct
FAN VIBRATION	Design: Good		Actual: Good
RPM - DESIGN	Design: 1406		Actual: 1404
RPM - MAX	Design: 2000		Actual: N/A
RPM - MAX RECOMMENDED	Design: 1600		Actual: N/A
FLA	Design: 3.8		Actual: 3
OVERLOAD SET POINT	Design: 3.8		Actual: N/A
PHASE	Design: 1		Actual: 1
FAN WITHIN 5 MILES OF COAST			Actual: No
HINGE KIT INSTALLED	Design: Yes		Actual: Yes
INSPECT ALL EXTERIOR SIDES OF UNIT. ANY VISIBLE DAMAGE	Design: No		Actual: No
SPEED CONTROL VOLTAGE	Design: 65		Actual: N/A

Fan 12 - A1-D.250-18Z (MUA-2 (21/22)) (MUA-2 (21/22))

Model: A1-D.250-18Z

Supply

Supply CFM:	Design = 2730	Actual = 2874	(105.3% of design)
--------------------	---------------	---------------	--------------------

VOLTS	Design: 208	Actual: 209
HP	Design: 5	Actual: 5
HUB SET SCREW TIGHT	Design: Yes	Actual: Yes
FAN LEVEL	Design: Yes	Actual: Yes
ROTATION	Design: Correct	Actual: Correct
FAN VIBRATION	Design: Good	Actual: Good
RPM - DESIGN	Design: 2247	Actual: 1080
RPM - MAX	Design: 2900	Actual: N/A
RPM - MAX RECOMMENDED	Design: 2900	Actual: N/A
FLA	Design: 9.6	Actual: 4.7
OVERLOAD SET POINT	Design: 10.8	Actual: N/A
PHASE	Design: 3	Actual: 3
DAMPER INSTALLED	Design: Yes	Actual: Yes

Other Notes:

Damper is installed

FAN WITHIN 5 MILES OF COAST	Actual: No
INSPECT ALL EXTERIOR SIDES OF UNIT. ANY VISIBLE DAMAGE	Actual: No
Record the ECM Speed	Actual: 40

Heater

Gas Heater

GAS TYPE	Design: Natural	Actual: Natural
INLET GAS PRESSURE	Design: 7	Actual: 18
FREEZE STAT TEMPERATURE	Design: 35	Actual: 35
FREEZE STAT TIMER	Design: 10	Actual: 10
SPACE SET POINT	Design: N/A	Actual: N/A
INTAKE SET POINT	Design: 45	Actual: 50
DISCHARGE SET POINT	Design: 55	Actual: 62
HIGH LIMIT SET POINT		Actual: 170

Direct Fired Heater

Housing Size: 1 **Burner Profile Pressure:** 0.0"

PILOT FLAME SIGNAL	Design: 12	Actual: 15.4
TEMP RISE		Actual: N/A

Other Notes:

Temp outside is too hot to get proper heat rise verified high and low fire ignited

HIGH FIRE MANIFOLD GAS PRESSURE	Design: 2	Actual: 2
HIGH FIRE INLET PRESSURE		Actual: 17
HIGH FIRE FLAME SIGNAL	Design: 12	Actual: 15.4
BURNER DIFFERENTIAL PRESSURE	Design: 0.3	Actual: 0.37
LOW MANIFOLD GAS PRESSURE		Actual: -1
MODULATION TIME	Design: 4	Actual: N/A
LOW FIRE FLAME SIGNAL	Design: 12	Actual: 15.4

Model: D76

Supply

Supply CFM:	Design = 1230	Actual = 1278	(103.9% of design)
VOLTS	Design: 208	Actual: 209	
HP	Design: 1.5	Actual: 1.5	
FAN LEVEL	Design: Yes	Actual: Yes	
ROTATION	Design: Correct	Actual: Correct	
FAN VIBRATION	Design: Good	Actual: Good	
BELT	Design: AX31	Actual: ax31	
BLOWER PULLEY	Design: AK39 x 3/4	Actual: AK39 x 3/4	
MOTOR PULLEY	Design: 1VP50 x 5/8	Actual: 1vp50 x 5/8	
APPROX. TURNS OUT	Design: 2.5	Actual: 2.5	
RPM - DESIGN	Design: 1889	Actual: N/A	
RPM - MAX	Design: 2400	Actual: N/A	
RPM - MAX RECOMMENDED	Design: 2100	Actual: N/A	
FLA	Design: 4.6	Actual: 3.4	
OVERLOAD SET POINT	Design: 4.6	Actual: N/A	
PHASE	Design: 3	Actual: 3	
BEARING SET SCREW TIGHT	Design: Yes	Actual: Yes	
BLOWER PULLEY SET SCREW TIGHT	Design: Yes	Actual: Yes	
MOTOR PULLEY SET SCREW TIGHT	Design: Yes	Actual: Yes	
FAN WITHIN 5 MILES OF COAST		Actual: No	
INSPECT ALL EXTERIOR SIDES OF UNIT. ANY VISIBLE DAMAGE		Actual: No	

Heater

Gas Heater

GAS TYPE	Design: Natural	Actual: Natural
LOW FIRE MANIFOLD GAS PRESSURE	Design: 0	Actual: -0.2
INLET GAS PRESSURE	Design: 7	Actual: 16
FREEZE STAT TEMPERATURE	Design: 35	Actual: 35
FREEZE STAT TIMER	Design: 10	Actual: 10
SPACE SET POINT	Design: N/A	Actual: N/A
INTAKE SET POINT	Design: 45	Actual: 50
DISCHARGE SET POINT	Design: 55	Actual: 62
HIGH LIMIT SET POINT		Actual: 170
HIGH FIRE INLET PRESSURE	Design: 7	Actual: 15
TEMP RISE	Design: 65	Actual: N/A

Other Notes:

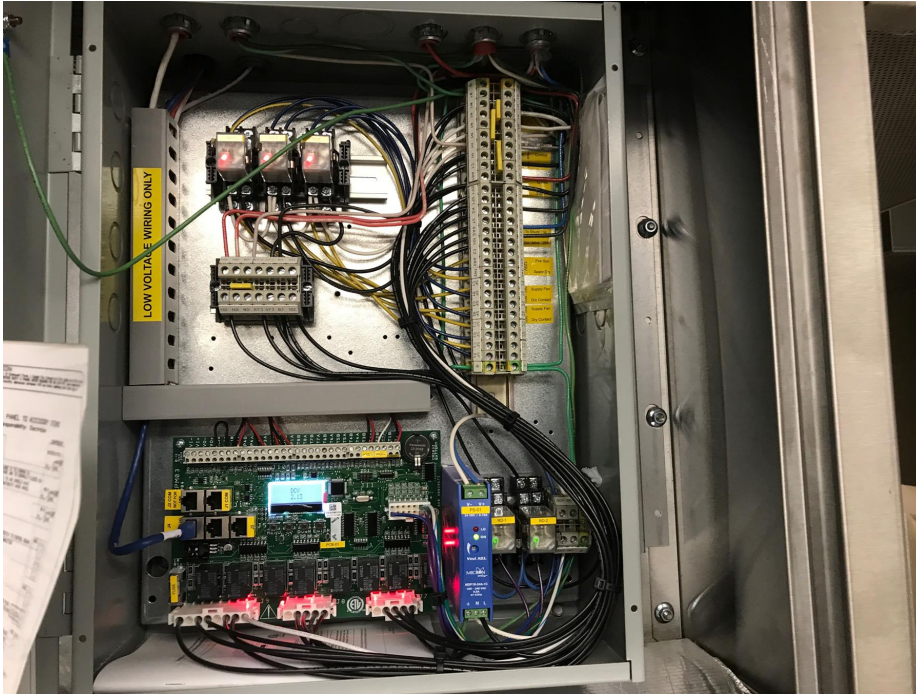
Temp outside was too hot for proper heat rise, verified low and high Fire ignited

ECP 2 - DCV-2122 (ITEM 31) (ITEM 31)

Package #: DCV-2122

Other Notes:

N/A



Smart Control

GAS VALVE RESET WORKS	Design: Yes	Actual: Yes
ROOM TEMPERATURE OFFSET	Design: 15	Actual: 15
HOW MANY FAN ZONES ARE THERE	Design: 2	Actual: 2
HYSTERESIS TEMPERATURE		Actual: 2
Room Sensor Type		Actual: Room Sensor
Is room sensor wireless or wired?		Actual: Wired
Is room sensor operating correctly? Upload Picture of installation		Actual: Yes

Other Notes:

N/A





ALL TEMP SENSORS ARE WIRED IN	Design: Yes	Actual: Yes
Do any of the light circuits exceed 1400W?	Design: No	Actual: No
ALL LIGHTS WORK	Design: Yes	Actual: Yes
ALL FAULTS CLEARED	Design: Yes	Actual: Yes
ECPM03 HARDWARE REVISION	Design: 04	Actual: 4
ECPM03 PROGRAM VERSION	Design: 2.13.20	Actual: 2.13
CASHMI HARDWARE REVISION	Design: 03	Actual: 3
CASHMI PROGRAM VERSION	Design: 2.13.20	Actual: 2.13
ECPM03 DATE AND TIME ACCURATE	Design: Yes	Actual: Yes

Other Notes:

N/A



Smoke Test Performed on all Hoods? Upload Video	Design: Yes	Actual: No
---	--------------------	-------------------

DCV

120V Line Ran from SF1 for MUA(s)	Design: Yes	Actual: Yes
Damper interlock wiring ran to MAU?	Design: Yes	Actual: Yes

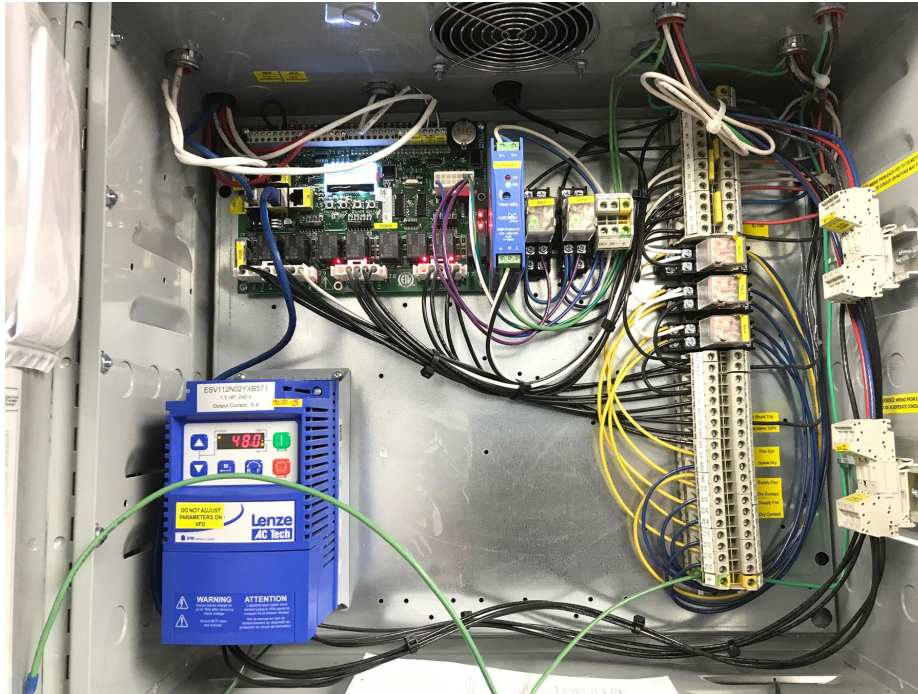
VFDs

NONE

Package #: DCV-2122

Other Notes:

N/A



Smart Control

GAS VALVE RESET WORKS Design: **Yes** Actual: **No**

Other Notes:

Mechanical gas valve

ROOM TEMPERATURE OFFSET Design: **15** Actual: **15**

HOW MANY FAN ZONES ARE THERE Design: **2** Actual: **2**

HYSTERESIS TEMPERATURE Actual: **2**

Room Sensor Type Actual: **Room Sensor**

Is room sensor wireless or wired? Actual: **Wired**

Is room sensor operating correctly? Upload Picture of installation Actual: **Yes**

Other Notes:

N/A





ALL TEMP SENSORS ARE WIRED IN	Design: Yes	Actual: Yes
Do any of the light circuits exceed 1400W?	Design: No	Actual: No
ALL LIGHTS WORK	Design: Yes	Actual: Yes
ALL FAULTS CLEARED	Design: Yes	Actual: Yes
ECPM03 HARDWARE REVISION	Design: 04	Actual: 4
ECPM03 PROGRAM VERSION	Design: 2.13.20	Actual: 2.13
CASHMI HARDWARE REVISION	Design: 03	Actual: 3
CASHMI PROGRAM VERSION	Design: 2.13.20	Actual: 2.13
ECPM03 DATE AND TIME ACCURATE	Design: Yes	Actual: Yes

Other Notes:

N/A



Smoke Test Performed on all Hoods? Upload Video	Design: Yes	Actual: No
---	--------------------	-------------------

DCV

120V Line Ran from SF1 for MUA(s)	Design: Yes	Actual: Yes
Damper interlock wiring ran to MAU?	Design: Yes	Actual: No

VFDs

VFD 1

DESIGN CFM
FAN DIRECTION

Design: **1230**
Design: **Forward**

Actual: **N/A**
Actual: **Reverse**

DCV VFD

SUPPLY FAN # ASSIGNED	Design: 15	Actual: 15
OVERLOAD = P108	Design: 76	Actual: 76
MAX HZ	Design: 60	Actual: 48
ALL FAULTS CLEARED = P197	Design: Yes	Actual: Yes
P508		Actual: 2.9
LOAD IN SEPARATE CONDUIT.	Design: Yes	Actual: Yes

CORE

NONE