

ABBREVIATIONS			
AAV	AUTOMATIC AIR VENT	HW	HOT WATER
ABV	ABOVE	HWR	HW RECIRC/HEATING WATER RETURN
AC	AIR CURTAIN	HWS	HEATING WATER SUPPLY
ACU	AIR CONDITIONING UNIT	HX	HEAT EXCHANGER
AFF	ABOVE FINISHED FLOOR	HZ	HERTZ
AHU	AIR HANDLING UNIT	IEER	INTEGRATED ENERGY EFFICIENCY RATIO
@	AT	IN W.C.	INCHES WATER COLUMN
AFMS	AIR FLOW MEASURING STATION	JSP	INTERNAL STATIC PRESSURE
AS	AIR SEPARATOR	JRH	INFRARED RADIANT TUBE HEATER
ATG	ADC TRANSFER GRILL	KEF	KITCHEN EXHAUST FAN
AV	AUTOMATIC AIR VENT	KH	KITCHEN EXHAUST HOOD
B	BOILER	KW	KILOWATT
BAS	BUILDING AUTOMATION SYSTEM	L	LOUVER
BC	BRANCH CONTROLLER	LAT	LEAVING AIR TEMPERATURE
BDD	BACKDRAFT DAMPER (GRAVITY)	LB	POUNDS
BDR	BASEBOARD RADIATOR	LBS/HR	POUNDS PER HOUR
BEL	BELOW	LF	LINEAR FOOT
BFP	BACKFLOW PREVENTION DEVICE	LG	LENGTH
BHP	BRAKE HORSEPOWER	LPR	LOW PRESSURE STEAM RETURN
BLDG	BUILDING	LPS	LOW PRESSURE STEAM SUPPLY
BOD	BOTTOM OF DUCT	LWT	LEAVING WATER TEMPERATURE
BOP	BOTTOM OF PIPE	MAT	MIXED AIR TEMPERATURE
BTUH	BRITISH THERMAL UNITS PER HOUR	MAU	MAKEUP AIR UNIT
CA	COMPRESSED AIR	MAV	MANUAL AIR VENT
CC	COOLING COIL	MAX	MAXIMUM
CD	CEILING DIFFUSER /CONDENSATE DRAIN	MBH	THOUSANDS OF BTU PER HOUR
CFM	CUBIC FEET PER MINUTE	MCA	MINIMUM CURRENT AMPACITY
CH	CHILLER	MIN	MINIMUM
CHR	CHILLED WATER RETURN	M.O.D.	MOTOR OPERATED DAMPER
CHS	CHILLED WATER SUPPLY	MOCP	MAXIMUM OVERCURRENT PROTECTION
CLG	CEILING	NC	NOISE CRITERIA
☉	CENTER LINE	N.C.	NORMALLY CLOSED
COND	CONDENSATE	NIC	NOT IN CONTRACT
COP	COEFFICIENT OF PERFORMANCE	N.O.	NORMALLY OPEN
CT	COOLING TOWER	NTS	NOT TO SCALE
CU	CONDENSING UNIT	OA	OUTDOOR AIR
CUH	CABINET UNIT HEATER	OBD	OPPOSED BLADE DAMPER
CV	CONSTANT VOLUME / CONTROL VALVE	OED	OPEN END DUCT
CW	DOMESTIC COLD WATER	P	PUMP
CR	CONDENSER WATER RETURN	PBD	PARALLEL BLADE DAMPER
CS	CONDENSER WATER SUPPLY	PD	PRESSURE DROP
DB	DRY BULB TEMPERATURE	PDH	POOL ROOM DEHUMIDIFIER
DC	DRY COOLER	PH	PHASE
°f	DEGREE FAHRENHEIT	PPM	PARTS PER MILLION
DH	DEHUMIDIFIER	PRV	PRESSURE RELIEF VALVE
DN	DOWN	PS	PRESSURE SWITCH
DOAS	DEDICATED OUTDOOR AIR SYSTEM	PSI	POUNDS PER SQUARE INCH
DP	DIFFERENTIAL PRESSURE	PSIA	POUNDS PER SQUARE INCH ABSOLUTE
DX	DX COOLING COIL	PSIG	POUNDS PER SQUARE INCH GAUGE
EA	EXHAUST AIR	PTAC	PACKAGED TERMINAL AIR CONDITIONER
EA.	EACH	RA	RETURN AIR
EAT	ENTERING AIR TEMPERATURE	RF	RETURN AIR FAN / RELIEF AIR
EER	ENERGY EFFICIENT RATIO	RG	RETURN GRILLE (LESS DAMPER)
EF	EXHAUST FAN	RH	RELATIVE HUMIDITY
EFF	EFFICIENCY	RHC	REHEAT COIL
EG	EXHAUST GRILLE (LESS DAMPER)	RLA	RUNNING LOAD AMPS
EL	ELEVATION	RPM	REVOLUTIONS PER MINUTE
ER	EXHAUST REGISTER	RLFA	RELIEF AIR ROOM
ERV	ENERGY RECOVERY VENTILATOR	RR	RETURN REGISTER (WITH DAMPER)
ESP	EXTERNAL STATIC PRESSURE	RTU	ROOFTOP AIR HANDLING UNIT
ET	EXPANSION TANK	RX	REMOVE EXISTING
EUH	ELECTRIC UNIT HEATER	SA	SUPPLY AIR
EW	ELECTRIC WALL HEATER	SAF	SUPPLY AIR FAN
EWT	ENTERING WATER TEMPERATURE	SD	SUPPLY DIFFUSER/SMOKE DAMPER
EX	EXISTING	SEER	SEASONAL ENERGY EFFICIENCY RATIO
EXT	EXTERNAL	SF	SQUARE FOOT
FCU	FAN COIL UNIT	SPEC.	PROJECT SPECIFICATIONS
FD	FIRE DAMPER	SFF	STAIR PRESSURIZATION FAN
FLA	FULL LOAD AMPS	SG	SUPPLY GRILLE
FL	FLOOR	SR	SUPPLY REGISTER
FLEX	FLEXIBLE	STRUCT.	STRUCTURAL
FO	FLAT OVAL	TEMP	TEMPERATURE
FPM	FEET PER MINUTE	TF	TRANSFER FAN
FPMB	FAN POWERED MIXING BOX	TOD	TOP OF DUCT
FSD	FIRE SMOKE DAMPER	TOP	TOP OF PIPE
FT	FEET	TSP	TOTAL STATIC PRESSURE
FT²	SQUARE FEET	TSTAT	THERMOSTAT
FTR	FINNED TUBE RADIATOR	TYP	TYPICAL
GAL	GALLON	UH	UNIT HEATER
GC	GENERAL CONTRACTOR	UON	UNLESS OTHERWISE NOTED
GIH	GRAVITY INTAKE HOOD	V	UNIT VENTILATOR
GPM	GALLONS PER MINUTE	VV	VOLT
GR	GLYCOL RETURN	VAC	VOLTS ALTERNATING CURRENT
GRH	GAS RADIANT HEATER	VAV	VARIABLE AIR VOLUME TERMINAL
GS	GLYCOL SUPPLY	VD	VOLUME DAMPER
GUH	GAS UNIT HEATER	VEH	VEHICLE EXHAUST
GV	GRAVITY VENTILATOR	VFD	VARIABLE FREQUENCY DRIVE
H	HUMIDIFIER	VP	VELOCITY PRESSURE
HC	HEATING COIL	VRF	VARIABLE REFRIGERANT FLOW
HCWR	DUAL TEMPERATURE RETURN	W	WATTS
HCWS	DUAL TEMPERATURE SUPPLY	W/	WITH
HGRH	HOT GAS REHEAT	W/O	WITHOUT
HP	HEAT PUMP / HORSEPOWER	WB	WET BULB
HPR	HIGH PRESSURE STEAM RETURN	WG	WATER GAUGE
HPS	HIGH PRESSURE STEAM SUPPLY	WSHP	WATER SOURCE HEAT PUMP
HR	HOUR		
HRC	HEAT RECOVERY COIL		
HRV	HEAT RECOVERY VENTILATOR		

GENERAL NOTES	
GENERAL MECHANICAL REQUIREMENTS	
1. Materials, equipment, and systems shall meet all pertinent requirements of the Underwriters Laboratory (UL), the American Society for Testing Materials (ASTM), American Society of Heating, Refrigeration and Air-Conditioning Engineers (ASHRAE), Sheet Metal and Air Conditioning Contractors National Association (SMACNA), American Gas Association (AGA), National Fire Protection Association (NFPA) and other nationally recognized agencies as well as the latest adopted edition of state and local code procedures, methods, and requirements, including the most stringent of health and safety standards as required and as interpreted by the authority having jurisdiction. Applicable codes and standards include, but are not limited to the following: International plumbing, building, energy, mechanical, and fuel gas codes' applicable local and municipal codes and ordinances.	23. All supply and return and outside air ducts inside the building thermal envelope shall be insulated with 1.5" fiberglass duct insulation. All supply and return ductwork outside the building thermal envelope shall be insulated with 3" fiberglass duct insulation (minimum R-8 "installed" value). Insulation shall be fiberglass wrap with scrim-reinforced foil backing. Seal all joints and punctures to preserve vapor barrier.
2. Bidders shall be licensed contractors in accordance with local and state laws.	24. Duct smoke detectors and accessories shall be UL tested and listed. Equipment and installation shall meet all pertinent requirements of the mechanical code and NFPA 72. Duct smoke detectors located more than 10 ft above the finished floor, or located such that the detector's alarm indicator is not visible to responding personnel, shall be provided with remote alarm indicators. Each remote indicator shall be clearly labeled as to function and air handling unit served, with an acrylic engraved nameplate.
3. Bidders shall thoroughly acquaint themselves with the conditions under which the work is to be performed. They shall examine all services, equipment, surfaces, etc., which this work is in any way dependent upon, and bring any discrepancies determined or omissions found in the drawings to the owner's attention before submitting bid. Verify all dimensions by field measurements.	25. All curtain-type fire dampers shall be UL 555 listed and dynamic rated, except that static rated fire dampers shall be permitted where the air handling system is automatically shut down in the event of fire. Provide and install duct access panel with acrylic engraved nameplate for each fire damper.
4. The systems shown on the drawings shall be provided to serve all fixtures, equipment, and areas within the Contract Limit Lines as set forth by the Architectural solution for the project. The bidding and contract requirements, general requirements, and general provisions shall apply to this section. Systems shall include all equipment, appurtenances, safety devices, and controls necessary for the intended service.	26. All diffusers and grilles shall be factory finished white, unless otherwise noted.
5. All permits and fees required for this work shall be secured and paid for by the mechanical contractor and included in bid price.	27. All mechanical equipment shall have vibration isolators, as well as flexible duct connectors. Flexible connectors shall be UL 181 tested and labeled, and shall not exceed 14' in length. Mechanical fasteners and sealants shall be used to connect ducts to mechanical equipment.
6. Anything drawn or specified on these plans shall not be construed to conflict with any local, municipal or state law, regulation or ordinance which governs the installation of any mechanical or related work. Where any portion of the systems is not installed as in accordance with applicable laws, ordinances, regulations and codes, this contractor shall make all changes required by the enforcing authorities in a manner approved by the owner and without additional cost to the owner. Where plan requirements are more stringent than code, the installation shall be in accordance with the plans.	28. All duct coverings, linings, tape and vibration isolation connectors shall have a maximum flame spread rating of 25, and a maximum smoke generation rating of 50.
7. Where job conditions require changes from the contract documents that do not change the scope of installation or nature of work required, the contractor shall make such changes without additional cost to the owner. No other changes may be made without written permission of the owner.	29. All duct dimensions listed on plans are inside clear dimensions. Where internally lined ductwork is specified, adjust sheet metal dimensions to accommodate liner.
8. All equipment shall be new and unused, UON, and shall bear the label of an approved agency. All equipment shall be installed in strict conformance to manufacturer's instructions, except where these specifications require a higher quality installation than recommended by manufacturer. All mechanical equipment shall be provided with installation instructions, which shall be made available at the job site.	30. Flexible ducts shall not exceed 6' in length, nor shall they be installed where they must be flattened. Flexible ducts shall be UL 181 tested and labeled, and must be fastened per SMACNA standards. If job conditions do not permit proper installation of flexible duct, rectangular galvanized steel duct with equal free area shall be used instead. Flexible ducts shall not be used where exposed, or where concealed above drywall or plaster ceilings.
9. All installed systems, devices and related items shall be tested in place on site. Replace any and all contractor-supplied defective devices, items or systems at contractor's own expense before completion of the project. Report any problems with existing to remain (ETR) items to owner for resolution.	31. Provide volume dampers at each branch off of a trunk duct to a supply diffuser.
10. Contractor shall guarantee all work for which materials are furnished, fabricated or field erected, all factory assembled equipment for which no specific manufacturer's guarantee is furnished, and all work in connection with installing manufacturer's guaranteed equipment. This contractor's guarantee shall exist for a period of one (1) year from the date of final owner acceptance of the work and shall apply to defects in material and to defective workmanship of any kind.	32. Ductwork is shown in schematic form. All required duct risers and drops to allow general routing depicted may not be shown. Provide offsets as required to meet space requirements and to avoid interference with other trades and field conditions. Exact location of the ductwork may vary according to the coordinated space requirements. Each trade shall be totally responsible for coordination with other trades. Notify engineer of conditions representing significant changes to the designed routing.
11. Contractor shall replace at contractor's own expense any contractor-supplied materials, equipment, and related items that fail or are found to be defective within the guarantee period.	33. Coordinate size, quantity, and location of all openings required for duct and pipe penetrations through walls, floors, and roofs, with contractor responsible for rough framing. Coordinate location of air intakes with exhaust and plumbing vents so that intakes are a minimum of 10 feet from exhaust openings or plumbing vents.
12. Arrange for chases, slots, and openings in other building components to allow for mechanical installations. Coordinate the installation of required supporting devices and sleeves to be set in poured in place concrete and other structural components, as they are constructed. Coordinate the cutting and patching of building components to accommodate installation of mechanical equipment and materials.	34. Install ducts in longest length possible and fewest possible joints. Install fabricated fittings for changes in directions, changes in size and shape, and connections.
13. Sequence, coordinate, and integrate installations of mechanical materials and equipment for efficient flow of the work. Give particular attention to large equipment requiring positioning prior to closing-in the building.	35. Install ducts, unless otherwise indicated, vertically and horizontally, parallel and perpendicular to building lines; avoid diagonal runs unless specifically indicated on drawings.
14. Coordinate mechanical equipment and materials installation with other building components. Coordinate the installation of mechanical materials and equipment above ceilings with suspension system, light fixtures, and other installations.	36. Install equipment level and plumb, parallel and perpendicular to other building systems and components in exposed interior spaces, unless otherwise indicated.
15. Equipment locations, roof & wall openings are approximate: verify size and coordinate with G.C., equipment supplier, and owner. Provide steel framing around roof opening(s) where required and around wall opening(s) where required.	37. All mechanical equipment with the exception of air handling units, supported from floor structure shall be mounted on 4" thick concrete housekeeping pads unless noted otherwise. Air-handling units shall be mounted on 6" thick concrete housekeeping pads to accommodate proper trapping of the condensate drain.
16. Do not endanger or damage installed work through procedures and processes of cutting and patching. Arrange for repairs required to restore other work, because of damage caused as a result of mechanical installations.	38. Air filters shall be replaced in all air handling equipment employing such prior to final completion and owner occupancy.
17. Where mounting heights are not detailed or dimensioned, install mechanical services and overhead equipment to provide the maximum headroom possible.	39. Basis of design mechanical equipment is as scheduled on the drawings. Contractor assumes responsibility for coordinating physical space requirements of equivalent capacity mechanical equipment deemed acceptable by the engineer.
18. Install mechanical equipment to facilitate maintenance and repair or replacement of equipment components. As much as practical, connect equipment for ease of disconnecting, with minimum of interference with other installations.	40. Mechanical equipment factory finish damaged during the course of construction shall be restored to original condition prior to final acceptance.
19. For all air systems: adjust fans, supply register dampers, and duct volume dampers as needed to balance all systems to match listed airflows (+/- 10%), and provide a written summary report. Replace fan drive if required to achieve design airflows. Air balance shall be performed by an independent AABC or NEBB certified firm. Summary report shall include design, preliminary and final airflow data, and shall include a list of deficiencies.	41. Coordinate mechanical ceiling devices such as diffusers and registers with light fixtures, speakers, sprinkler heads, etc.
20. For all water systems: adjust ball valves, balance valves, pumps, etc, as needed to balance all piping to match GPM and pressure and temperature ranges shown, and provide a written summary report. Water system balance shall be performed by an independent AABC or NEBB certified firm. Summary report shall include design, preliminary and final flow data, and shall include a list of deficiencies.	42. Electrical equipment spaces: Route ductwork to avoid passing through transformer vaults and electrical equipment spaces and enclosures. Avoid routing ductwork directly above electrical equipment unless specifically indicated on the mechanical drawings.
21. The entire installation, including the gauges of ductwork, shall be in strict compliance with SMACNA standards, except where these specifications require a stricter installation standard. System is 1" pressure class, UON. All ducts shall be sealed to meet SMACNA Class A requirements, and shall be supported at intervals not exceeding 10'. Sealant shall be UL-181A or 181B certified.	43. Non-Fire-Rated Partition Penetrations: where ducts pass through interior partitions and are exposed to view in mechanical rooms, conceal space between construction opening and duct or duct insulation with sheet metal flanges of same metal thickness as duct. overlap opening on four sides by at least 1-1/2 inches unless indicated otherwise.
22. All 90 degree turns in supply and return ductwork shall be mitered elbows with single wall turning vanes at 2' spacing extended in the direction of airflow, or smooth radius elbows with a radius-to-width ratio of 1.0 or greater. Mitered elbows without turning vanes, square-throat radiused-heel elbows, and radiused-throat square-heel elbows are NOT acceptable. All duct transitions shall be smooth (30 degree taper maximum), not abrupt.	44. Fire-Rated Partition Penetrations: where ducts pass through interior partitions, install appropriately rated fire damper. Fire damper installation must strictly adhere to manufacturer's written instructions.
	45. All air handlers, condensers, control devices and other mechanical apparatus shall be clearly marked for easy identification and owner Use black plastic or bakelite name plate engraved with white letters 1/4" high. Punched tape is not acceptable.
	46. Mechanical contractor shall furnish record set of drawings with any deviations marked in red ink, within 90 days of system acceptance.
	47. Mechanical contractor shall furnish manuals for all new equipment within 90 days of system acceptance, including, at a minimum: equipment input and output capacity and required maintenance actions, O&M manuals, controls maintenance and calibration information (including wiring diagrams and controls set points), and a complete written narrative of how each system is intended to operate. Systems shall be tested to ensure that controls are calibrated, adjusted, and in proper working condition.
	48. All submittals shall be sent in pdf format, hard copies will not be reviewed. Submittals shall be highlighted or redlined to indicate equipment ID from schedules, model number, performance data, electrical data, dimensions, weights, options and accessories, and shall be emailed to the Architect.
	49. Ductwork systems in areas with drywall ceilings/bulheads shall be balanced prior to closing of the ceiling. All air devices mounted in drywall ceiling to have trim panels. Where access to manual balancing dampers will not be easily accessible, provide cable controlled damper at neck of diffuser or at duct main takeoff. Metropolitan air technology "roto-twist" model RT-150 or equal.

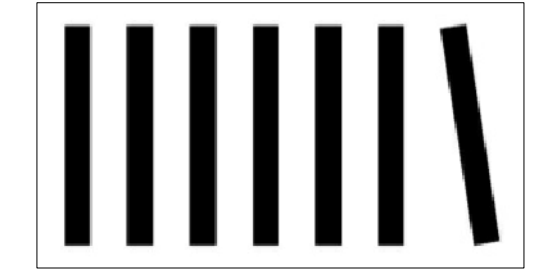
MECHANICAL SYMBOLS LIST			
SYMBOL	DESCRIPTION	SYMBOL	DESCRIPTION
	RECTANGULAR DUCT		4- WAY BLOW SUPPLY AIR DIFFUSER
	ROUND DUCT		NON-4 WAY DIFFUSER AIR PATTERN
	FLAT OVAL DUCT		LINEAR SUPPLY AIR DIFFUSER
	VOLUME DAMPER		ROUND SUPPLY AIR DIFFUSER
	FIRE DAMPER W/ACCESS DOOR		RETURN AIR GRILLE
	SMOKE DAMPER W/ ACCESS DOOR		EXHAUST AIR REGISTER
	STATIC PRESSURE SENSOR		CEILING EXHAUST FAN
	MOTOR OPERATED DAMPER		DIRECTION OF AIR FLOW
	FLEXIBLE CONNECTION		CONNECT TO EXISTING
	SOUND LINED DUCTWORK		DEMOLISH TO THIS LOCATION
	CAPPED DUCTWORK		THERMOSTAT
	CAPPED DUCTWORK		REVERSE ACTING THERMOSTAT
	CAPPED DUCTWORK		HUMIDISTAT
	CAPPED DUCTWORK		SENSOR
	CAPPED DUCTWORK		SMOKE DETECTOR
	DUCTWORK TRANSITIONS		PRESSURE SENSOR
	ROUND TO RECTANGULAR TRANSITION		GAS DETECTOR SENSOR
	DUCTWORK TRANSITION		ON/OFF SWITCH
	RISE AND DROP IN DUCTWORK		VARIABLE SPEED SWITCH
	RISE AND DROP IN DUCTWORK		CUBIC FEET PER MINUTE (CFM)
	TURNING VANES		DIAMETER
	RADIUS ELBOW		FLAT OVAL
	SUPPLY DUCT DOWN		DRAWING NOTE
	SUPPLY DUCT UP		REVISION SYMBOL
	RETURN DUCT DOWN		1" UNDERCUT DOOR
	RETURN DUCT UP		DOOR LOUVER
	EXHAUST DUCT DOWN		EQUIPMENT IDENTIFIER
	EXHAUST DUCT UP		
	AIR TITE FITTING W/INTEGRAL VOLUME DAMPER		
	TOP AIR TITE FITTING CONNECTION		
	DOUBLE LINE FLEXIBLE DUCT		
	SINGLE LINE FLEXIBLE DUCT		

NOTE:
 • ALL SYMBOLS ARE SHOWN FOR REFERENCE ONLY. CONTRACTOR SHALL NOTE THAT NOT ALL SYMBOLS MAY BE USED, AS WELL AS NOT ALL SYMBOLS USED MAY BE LISTED. REFER TO PROJECT SPECIFIC NOTES FOR ADDITIONAL INFORMATION.

DRAWING CONVENTIONS	
	NEW WORK - HEAVY AND SOLID LINES
	EXISTING TO REMAIN - LIGHT AND SOLID LINES
	REMOVE EXISTING - HEAVY AND DASHED LINES

NOTICE TO CONTRACTORS

ALL CONTRACTORS PRIOR TO BID SUBMISSION PROCESS SHALL VISIT PROPOSED WORK SITE AND FIELD VERIFY ALL EXISTING CONDITIONS. ANY CONDITIONS THAT DIFFER FROM THAT SHOWN ON THESE PLANS SHALL BE REPORTED TO ARCHITECT/ENGINEER SO THAT NEW AND REVISED BID DRAWINGS OR INFORMATION MAY BE ISSUED. MODIFICATIONS TO SCOPE OF WORK WHICH RESULT FROM CONTRACTORS NEGLIGENCE TO VISIT THE SITE PRIOR TO SUBMITTING BID, SHALL BE THE CONTRACTORS SOLE RESPONSIBILITY.



GRUPO 7 ARCHITECTURE + INTERIORS
 1322 14th Street NW
 Third Floor
 Washington, DC 20005
 202.342.0890

MEZEH GRILL
 209 Marketplace Boulevard
 Block 2613, Lot 38
 Township of Hamilton
 Mercer County, New Jersey

CONSULTANT:



CERTIFICATION:

ISSUE:	
PERMIT SET	04.14.22
PERMIT REVISION	07.28.22
PERMIT REVISION	10.03.22

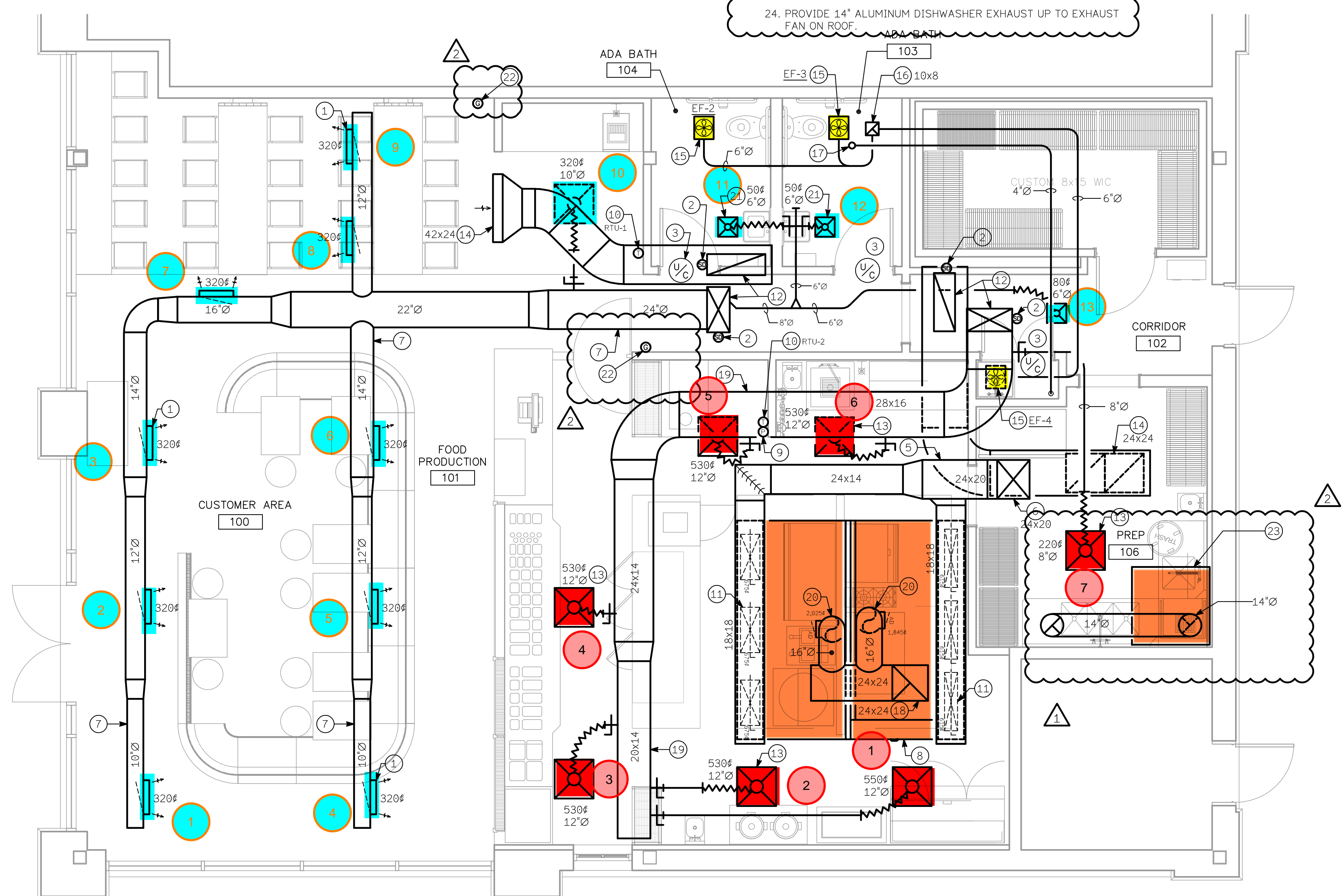
IDC PROJECT #: 22-010
 SHEET TITLE:

MECHANICAL LEGEND,
 ABBREVIATIONS, AND
 GENERAL NOTES

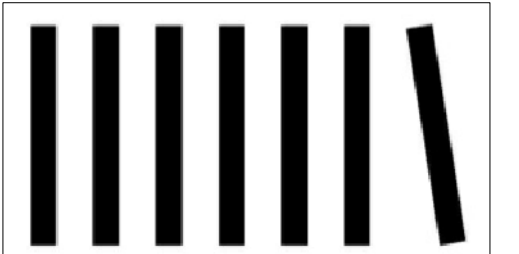
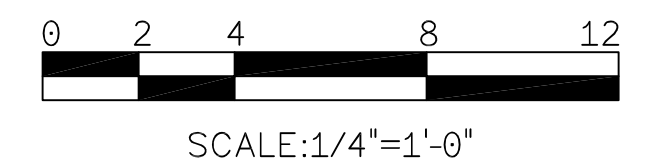
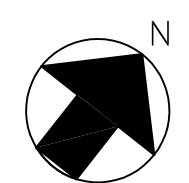
SHEET NUMBER: **M001**

DRAWING NOTES ①#

1. 25"x6" SUPPLY AIR REGISTER MOUNTED IN SIDE OF DUCTWORK WITH AIR QUANTITY INDICATED (TYPICAL). LINDAB RGS-3 OR APPROVED EQUAL WITH INTEGRAL VOLUME CONTROL AND DOUBLE DEFLECTION LOUVERS SET AT 30° LEFT/RIGHT. (TYP)
2. PHOTOELECTRIC DUCT MOUNTED SMOKE DETECTOR WITH 12"x12" ACCESS DOOR FOR TUBE INSPECTION. (TYPICAL)
3. 1' UNDERCUT DOOR (TYPICAL).
4. MANUAL BALANCING DAMPER (TYPICAL).
5. MAKE-UP AIR DUCTWORK SUPPORTED FROM STRUCTURE ABOVE CEILING.
6. MAKEUP AIR DUCTWORK UP THRU ROOF TO UNIT. TRANSITION IN VERTICAL AS REQUIRED.
7. LINDAB ROUND SPIRAL SUPPLY AIR DUCTWORK SUPPORTED HIGH FROM STRUCTURE WITH AIR CRAFT CABLING OR AS RECOMMENDED BY MANUFACTURER. MOUNT ABOVE CEILING FEATURE, COORDINATE HEIGHT WITH ARCHITECT. DUCTWORK SHALL BE DOUBLE WALL, INSULATED WITH SELF-SEALING / GASKETED CONNECTIONS.
8. OUTLINE OF KITCHEN HOOD, PROVIDED BY OTHERS AND INSTALLED BY MECHANICAL CONTRACTOR. REFER TO KITCHEN HOOD DESIGN DRAWINGS.
9. EXHAUST HOOD FIRE SUPPRESSION SYSTEM MANUAL FULL STATION MOUNTED ON WALL 48" ABOVE FLOOR AND LOCATED BETWEEN 10'-20" AWAY FROM HOOD IN PATH OF EGRESS. COORDINATE EXACT LOCATION WITH OWNER AND FIRE MARSHALL.
10. WALL MOUNTED THERMOSTAT MOUNTED 48" ABOVE FLOOR WITH LOCKABLE COVER AND INTERLOCKED WITH UNIT INDICATED.
11. MAKE-UP AIR DUCTWORK EXTENDED DOWN AND CONNECTED TO TOP OF HOOD WITH MANUAL VOLUME DAMPER (TYPICAL). REFER TO KITCHEN HOOD DESIGN DRAWINGS FOR CONNECTION SIZES AND AIR QUANTITIES.
12. SUPPLY AND RETURN UP TO GAS FIRED ROOFTOP UNIT, FULL SIZE OF UNIT OPENING.
13. 24"x24" CEILING MOUNTED PERFORATED SUPPLY AIR DIFFUSER WITH NECK SIZE AND AIR QUANTITY INDICATED. PROVIDE 18"x18"x6" PLENUM AT NECK AND RIGID/FLEXIBLE DUCTWORK BACK TO MAIN WITH AIR-TITE FITTING AND MANUAL VOLUME DAMPER. DIRECT AIR FLOW TO BE AWAY FROM KITCHEN HOOD.
14. RETURN AIR GRILLE WITH NECK SIZE AND AIR QUANTITY INDICATED. PROVIDE RIGID DUCTWORK BACK TO MAIN WITH MANUAL VOLUME DAMPER.
15. CEILING MOUNTED EXHAUST AIR FAN SUPPORTED FROM STRUCTURE AND INTERLOCKED WITH LIGHT SWITCH. EXTEND DISCHARGE DUCTWORK OVER TO COMMON RISER THRU ROOF. REFER TO SCHEDULE.
16. EXHAUST DUCTWORK UP THRU ROOF TO GOOSENECK.
17. COMBUSTION AIR INTAKE/GAS FLUE PIPING SUPPORTED ABOVE CEILING FROM GAS FIRED WATER HEATER AND EXTENDED UP THRU ROOF TO CONCENTRIC ADAPTOR PROVIDED BY HEATER MANUFACTURER.
18. GREASE EXHAUST DUCTWORK UP THRU ROOF. TRANSITION IN VERTICAL AS REQUIRED FOR CONNECTION TO UNIT CURB OPENING.
19. SUPPLY DUCTWORK SUPPORTED FROM STRUCTURE ABOVE CEILING.
20. EXHAUST AIR DUCTWORK EXTENDED DOWN AND CONNECTED TO TOP OF HOOD. PROVIDE LONG RADIUS ELBOWS AT ALL ELBOWS. REFER TO KITCHEN HOOD DESIGN DRAWINGS FOR CONNECTION SIZES AND AIR QUANTITIES. KITCHEN HOOD GREASE EXHAUST AIR DUCTWORK SUPPORTED FROM STRUCTURE ABOVE CEILING WITH ZERO (0°) CLEARANCE FIRE WRAP, PROVIDING A 2 HOUR ENCLOSURE ASSEMBLY, FROM HOOD CONNECTION TO GREASE FAN ROOF PENETRATION. PROVIDE LONG RADIUS TURNS AT ALL ELBOWS WITH CLEANOUTS AND 12"x12" ACCESS DOORS AT ALL TURNS, BASE OF RISER AND EVERY 20'-0" HORIZONTALLY.
21. 12"x12" CEILING MOUNTED EXHAUST GRILLE WITH NECK SIZE AND AIR QUANTITY INDICATED. PROVIDE 8x8x6 PLENUM AT NECK AND RIGID/FLEXIBLE DUCTWORK BACK TO MAIN WITH AIR-TITE FITTING AND MANUAL VOLUME DAMPER.
22. WALL MOUNTED STAND-ALONE CO GAS SENSOR WITH AUDIBLE/VISUAL ALARMS AND INDICATOR LIGHTS CERTIFIED TO U.L. AND C.S.A. STANDARDS. VULCAIN MODEL VA201M1CO OR APPROVED EQUAL. MOUNT SENSOR 48" ABOVE FLOOR.
23. OUTLINE OF DISHWASHER HOOD, PROVIDED BY OTHERS AND INSTALLED BY MECHANICAL CONTRACTOR. REFER TO HOOD DESIGN DRAWINGS.
24. PROVIDE 14" ALUMINUM DISHWASHER EXHAUST UP TO EXHAUST FAN ON ROOF.



FLOOR PLAN - MECHANICAL NEW WORK
SCALE: 1/4" = 1'-0"



GRUPO 7 ARCHITECTURE + INTERIORS
1322 14th Street NW
Third Floor
Washington, DC 20005
202.342.0890

MEZEH GRILL
209 Marketplace Boulevard
Block 2613, Lot 38
Township of Hamilton
Mercer County, New Jersey

CONSULTANT:



TELEAGENT ENGINEERING INC.
2216 Commerce Road, Suite 1
Forest Hill, MD 21050
410-692-5816
www.tel-eng.com

CERTIFICATION:

ISSUE:

PERMIT SET	04.14.22
① PERMIT REVISION	07.28.22
② PERMIT REVISION	10.03.22

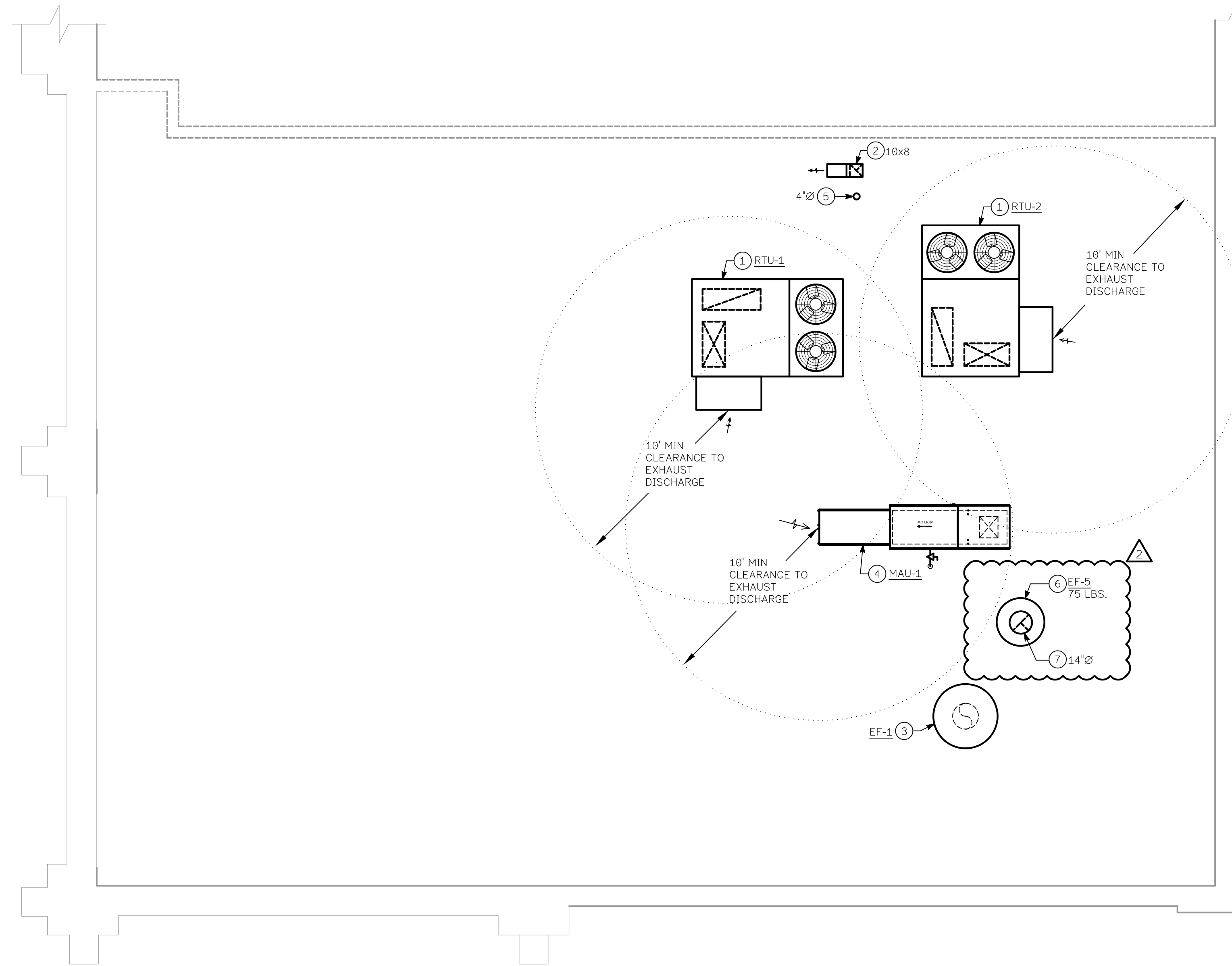
IDC PROJECT #: 22-010
SHEET TITLE:

FLOOR PLAN - MECHANICAL
NEW WORK

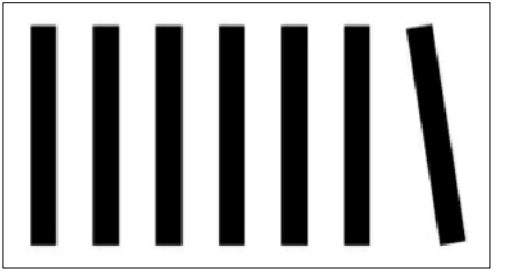
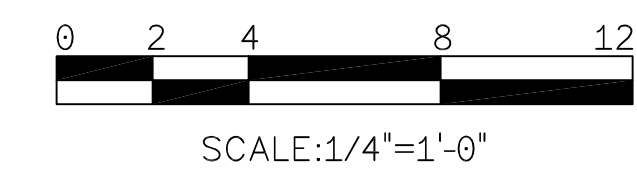
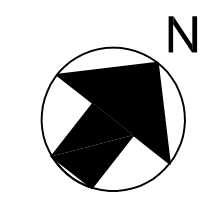
SHEET NUMBER: **M101**

DRAWING NOTES: ①Ⓜ

1. GAS FIRED ROOFTOP UNIT ON ROOF CURB. COORDINATE WITH STRUCTURAL ENGINEER FOR ANY STEEL BRACING, ETC. REFER TO SCHEDULE.
2. EXHAUST DUCTWORK UP THRU ROOF TO GOOSENECK.
3. ROOF MOUNTED UPBLAST GREASE EXHAUST FAN (PROVIDED BY OTHERS AND INSTALLED BY MECHANICAL CONTRACTOR) ON 20" FACTORY CURB. REFER TO SCHEDULE AND KITCHEN HOOD DESIGN DRAWINGS.
4. ROOF MOUNTED GAS FIRED MAKE-UP AIR UNIT (PROVIDED BY OTHERS AND INSTALLED BY MECHANICAL CONTRACTOR) ON 16" HIGH FACTORY ROOF CURB. REFER TO SCHEDULE AND KITCHEN HOOD DESIGN DRAWINGS.
- ② 5. COMBINATION CONCENTRIC VENT PIPING DOWN TO GAS FIRED TANK TYPE WATER HEATER BELOW.
6. ROOF MOUNTED DOWNBLAST DISHWASHER CONDENSATE EXHAUST FAN. SEE SCHEDULE FOR MORE INFORMATION.
7. PROVIDE 14"Ø ALUMINUM DUCTWORK DOWN TO DISHWASHER EXHAUST HOOD.



ROOF PLAN - MECHANICAL NEW WORK
SCALE: 1/4" = 1'-0"



GRUPO 7 ARCHITECTURE + INTERIORS
1322 14th Street NW
Third Floor
Washington, DC 20005
202.342.0890

MEZEH GRILL
209 Marketplace Boulevard
Block 2613, Lot 38
Township of Hamilton
Mercer County, New Jersey

CONSULTANT: _____



TELEAGENT ENGINEERING INC.
2216 Commerce Road, Suite 1
Forest Hill, MD 21050
410-692-5816
www.tel-eng.com

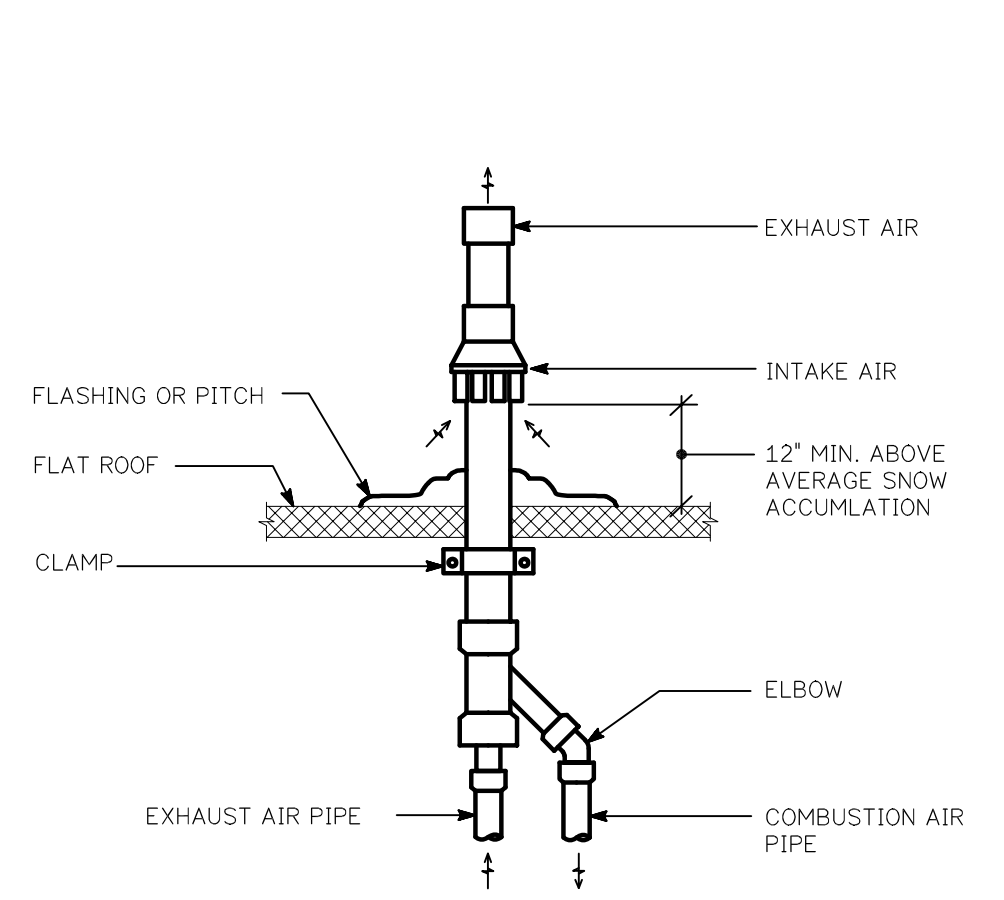
CERTIFICATION: _____

ISSUE:	
PERMIT SET	04.14.22
① PERMIT REVISION	07.28.22
② PERMIT REVISION	10.03.22

IDC PROJECT #: _____ 22-010
SHEET TITLE:

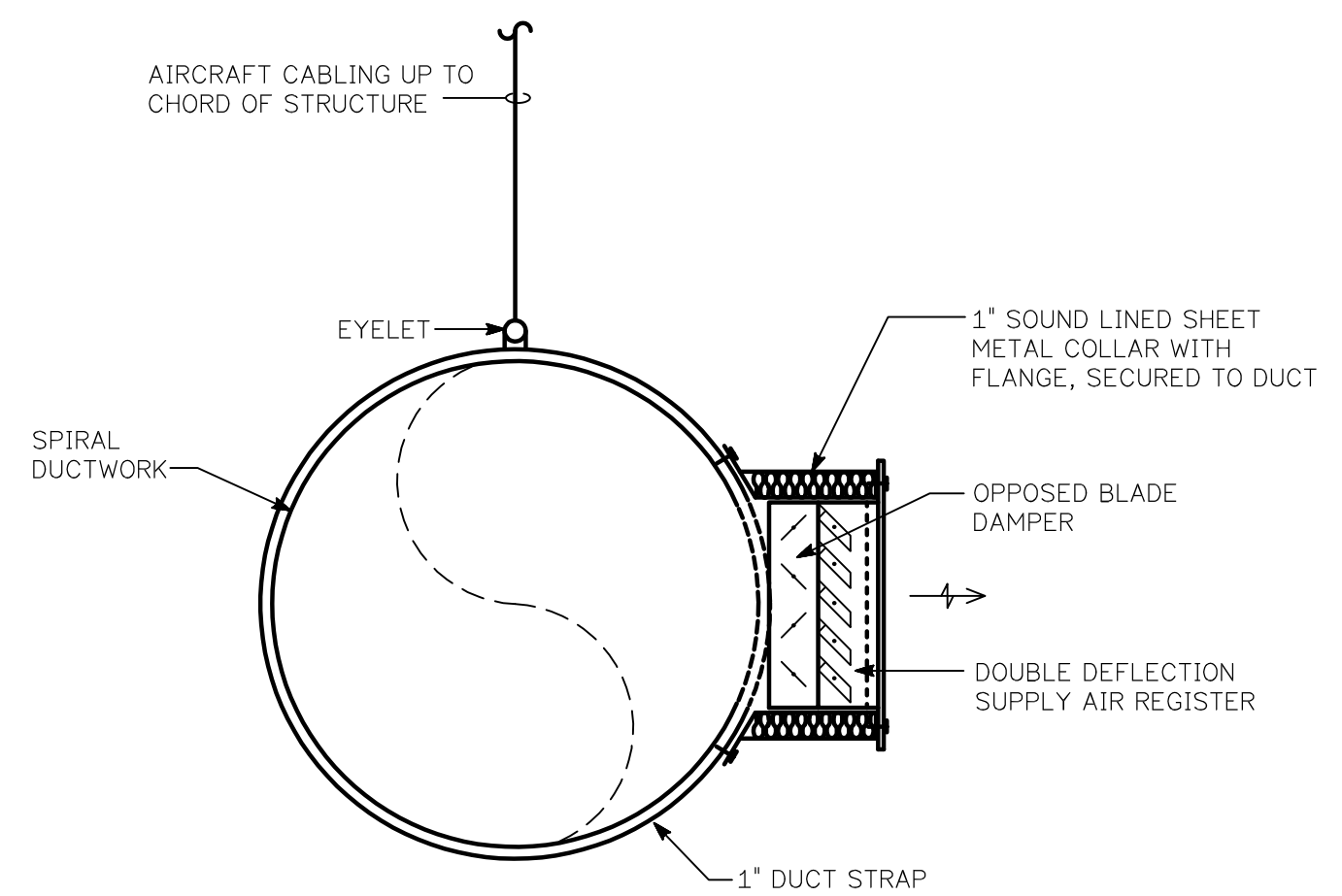
**ROOF PLAN - MECHANICAL
NEW WORK**

SHEET NUMBER: **M102**



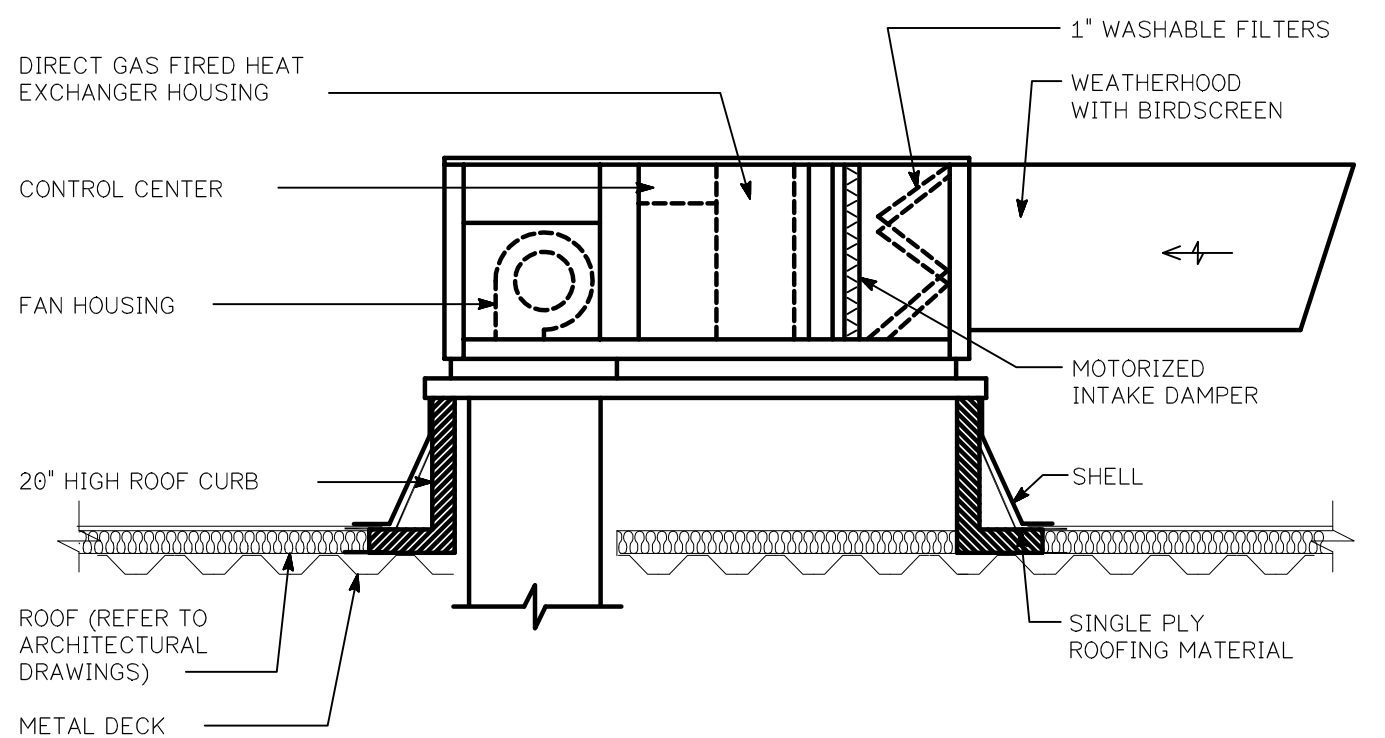
**CONCENTRIC VENT ROOF ADAPTOR
INSTALLATION DETAIL**
NO SCALE

NOTE:
DETAIL SIMILAR FOR SLOPED ROOF.



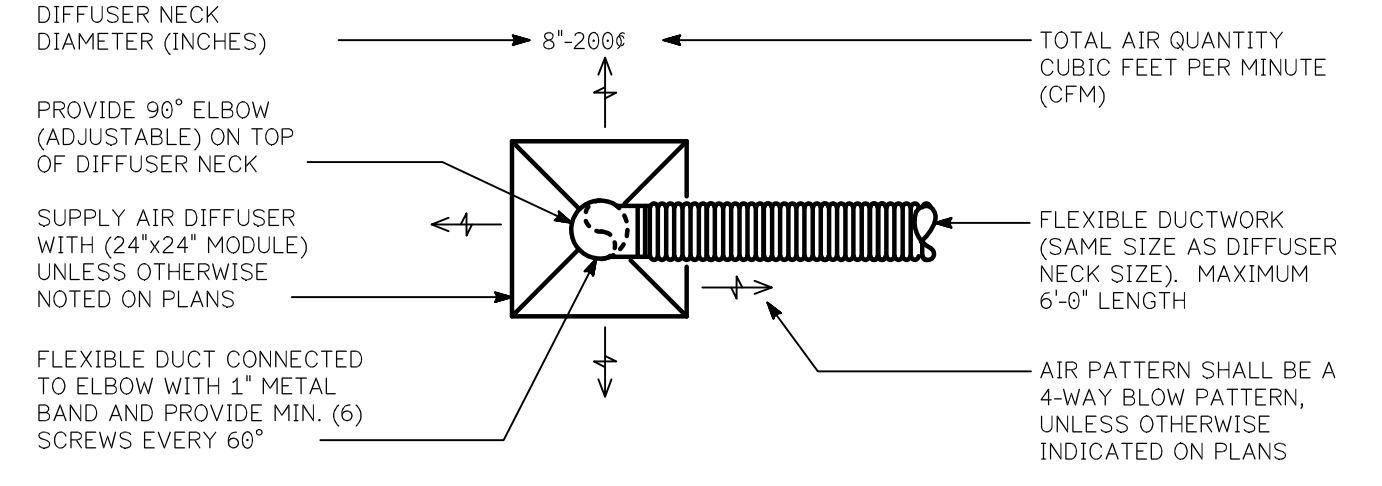
**SPIRAL SUPPLY AIR DUCT
REGISTER MOUNTING**
NO SCALE

NOTE: REGISTER SHALL BE LINDAB RGS-3 OR APPROVED EQUAL. ADJUST LOUVERS SO THAT AIR FLOW PATTERN IS AT 30° LEFT/RIGHT

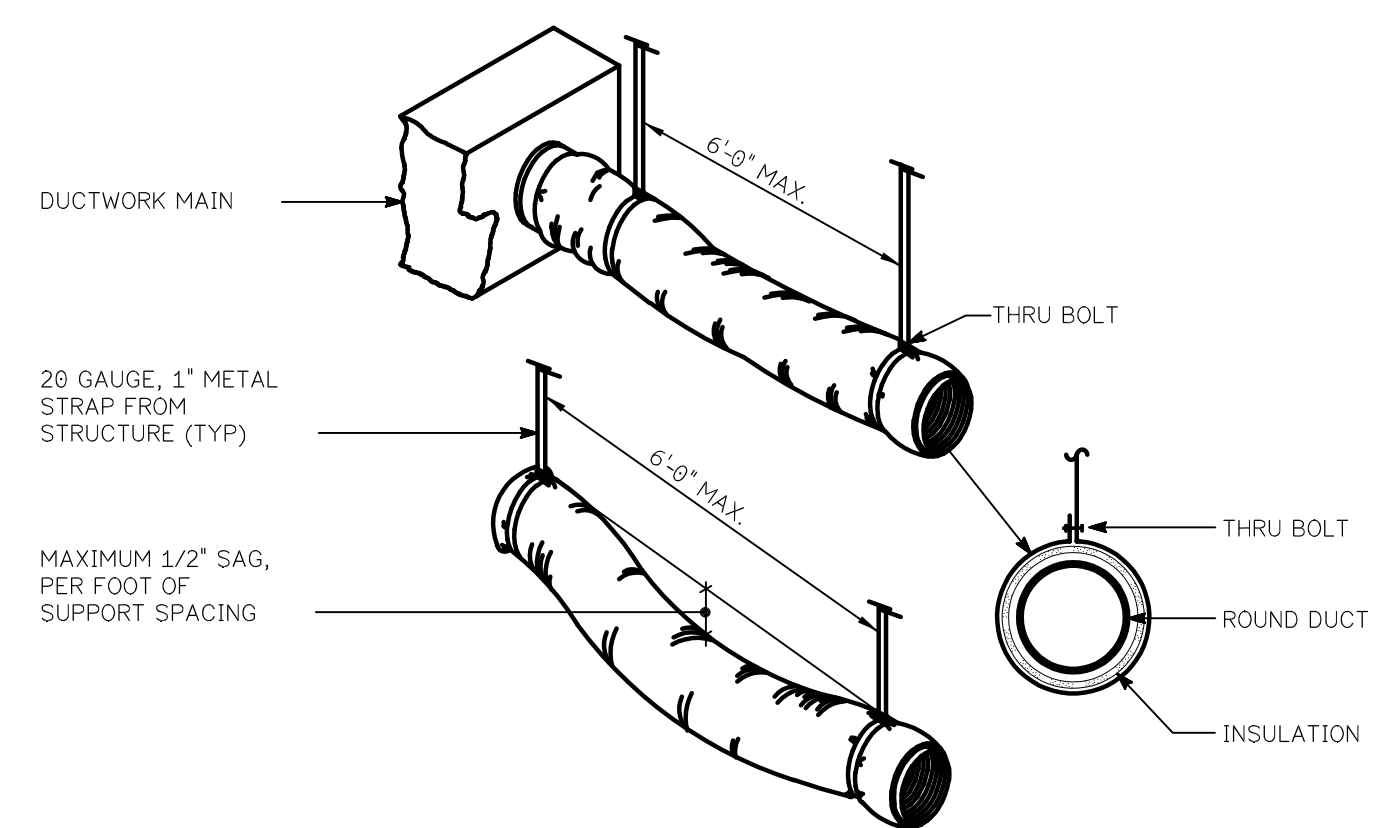


KITCHEN HOOD MAKE-UP AIR UNIT DETAIL
NO SCALE

NOTE:
REFER TO KITCHEN HOOD DESIGN DRAWINGS FOR ADDITIONAL INFORMATION.

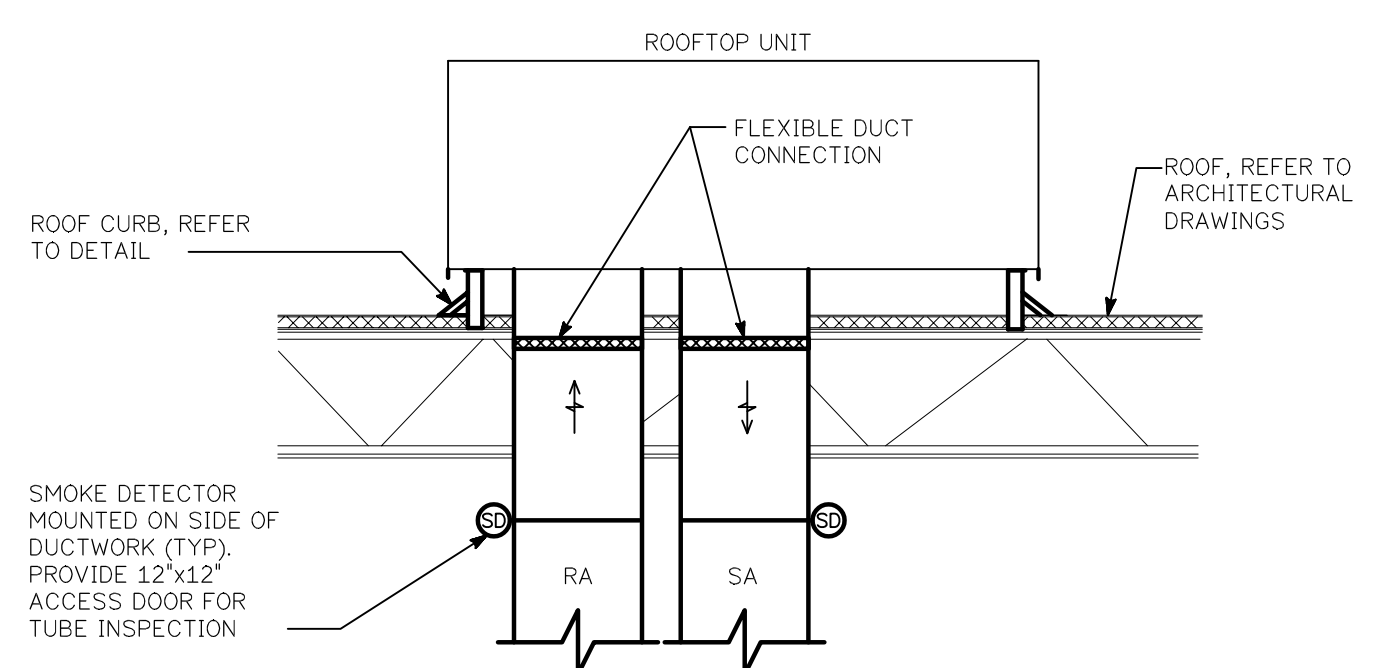


SUPPLY AIR DIFFUSER KEY
NO SCALE

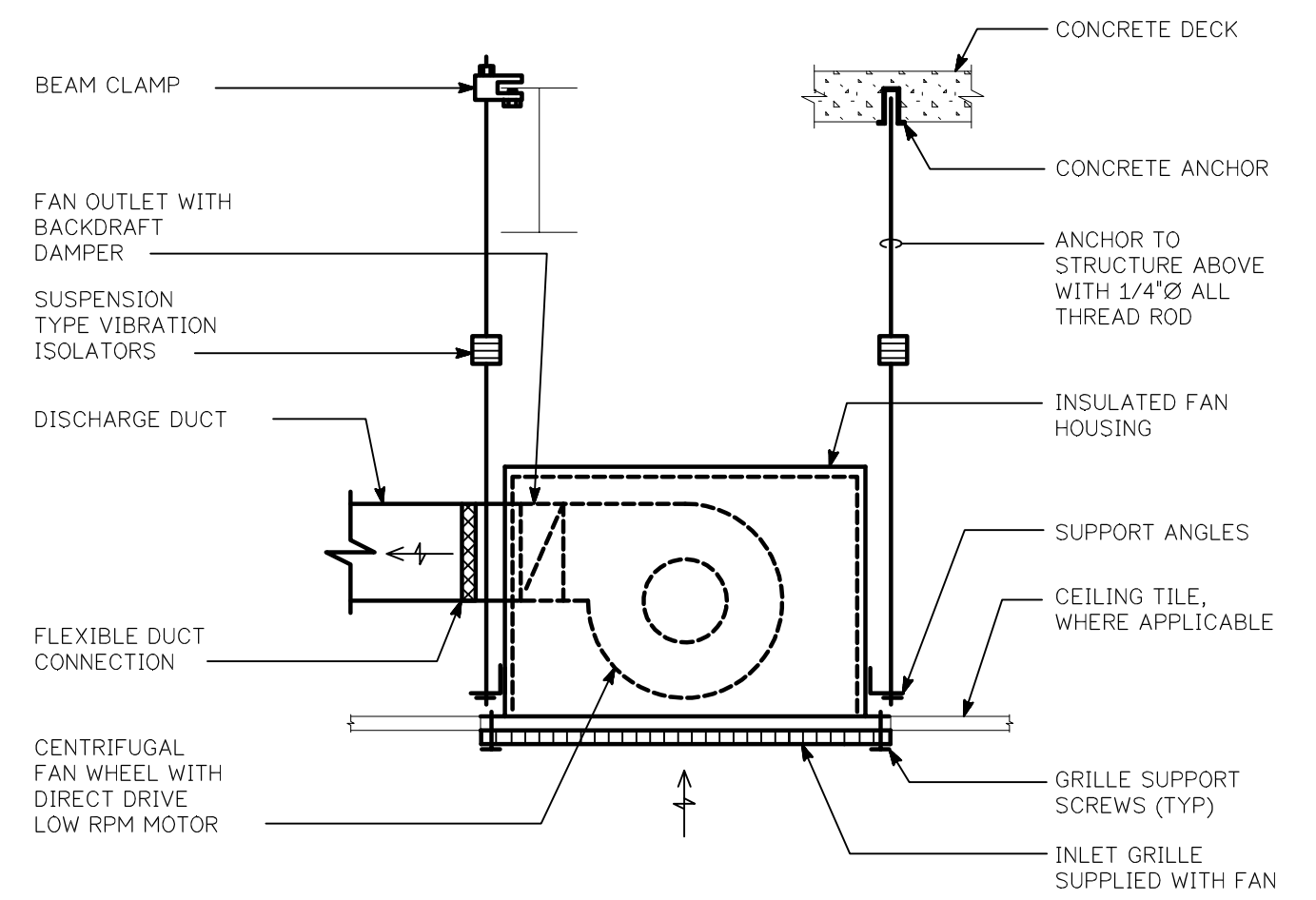


FLEXIBLE DUCT RUN-OUT SUPPORT DETAIL
NO SCALE

NOTES:
1) FLEXIBLE DUCT SHOULD EXTEND STRAIGHT FOR SEVERAL INCHES FROM RECTANGULAR DUCT CONNECTION BEFORE BENDING.
2) USE RIGID DUCTWORK WHEN FLEXIBLE DUCT LENGTH EXCEEDS 6'-0\"/>

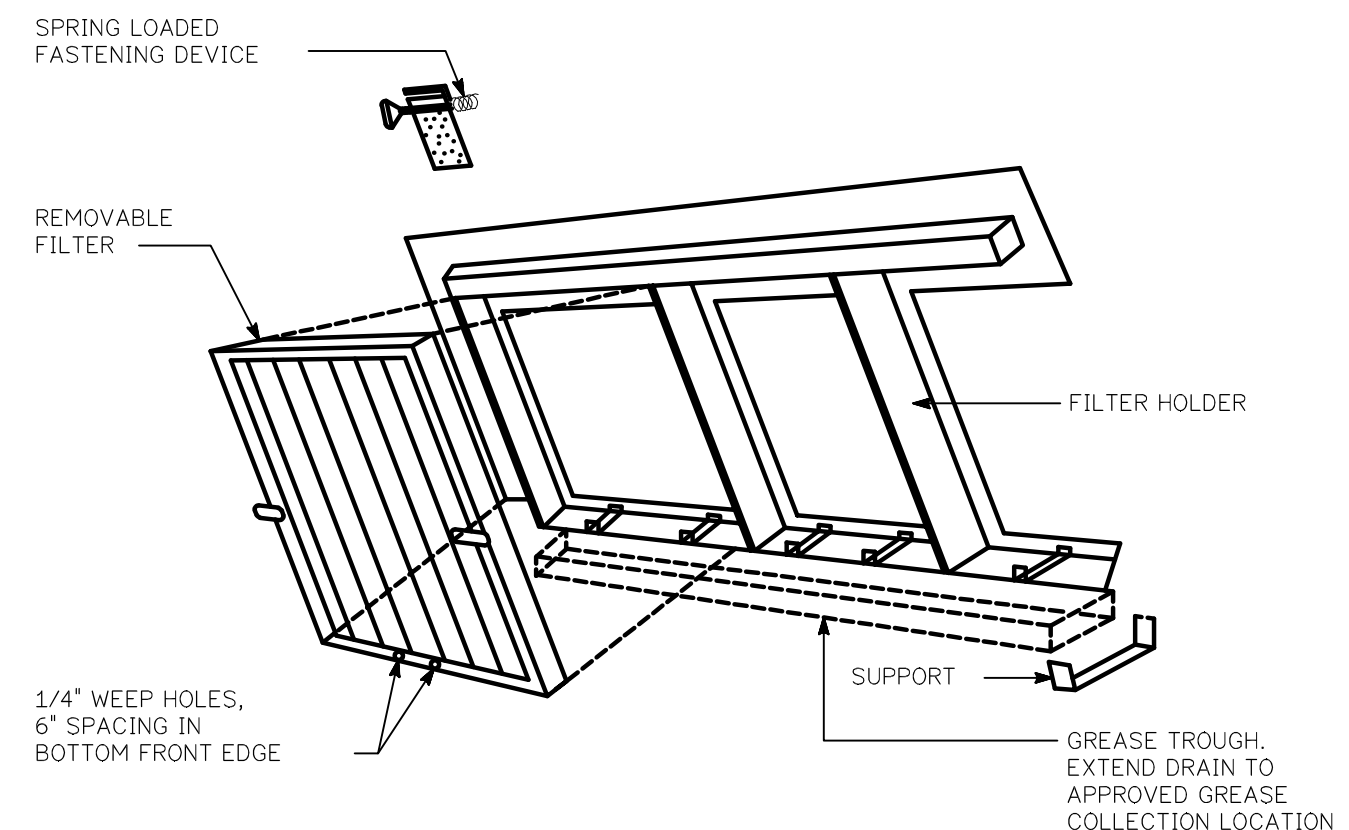


ROOFTOP UNIT DETAIL
NO SCALE



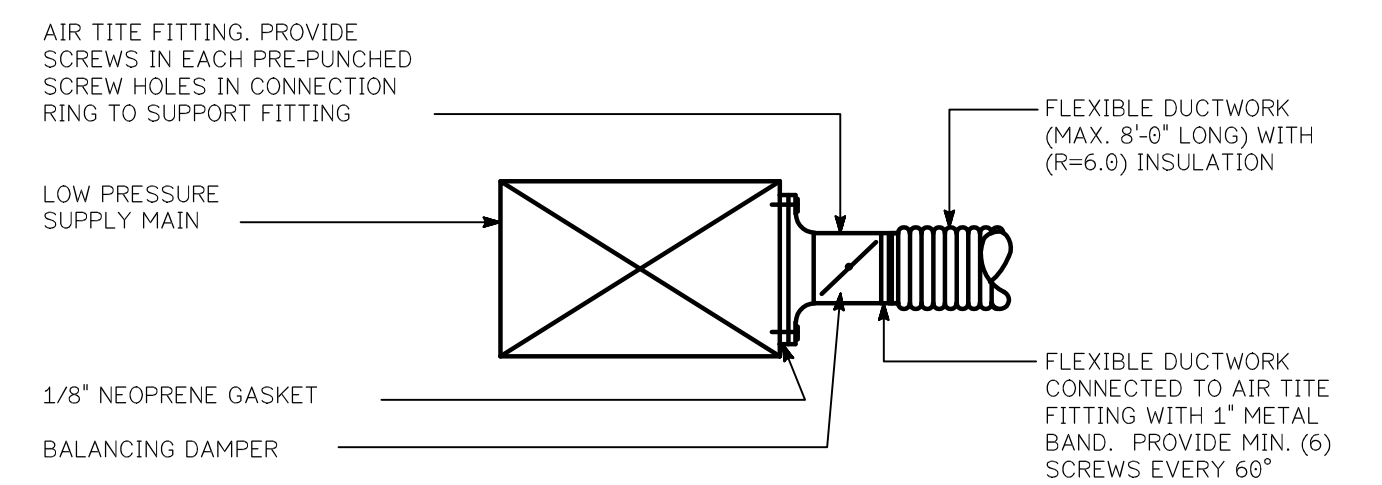
**CEILING MOUNTED EXHAUST
FAN DETAIL**
NO SCALE

NOTE:
PROVIDE VARIABLE SPEED CONTROLLER ON SIDE OF CASING FOR PROPER AIR BALANCE



KITCHEN HOOD FILTER DETAIL
NO SCALE

NOTE:
REFER TO KITCHEN HOOD DESIGN DRAWINGS FOR ADDITIONAL INFORMATION.

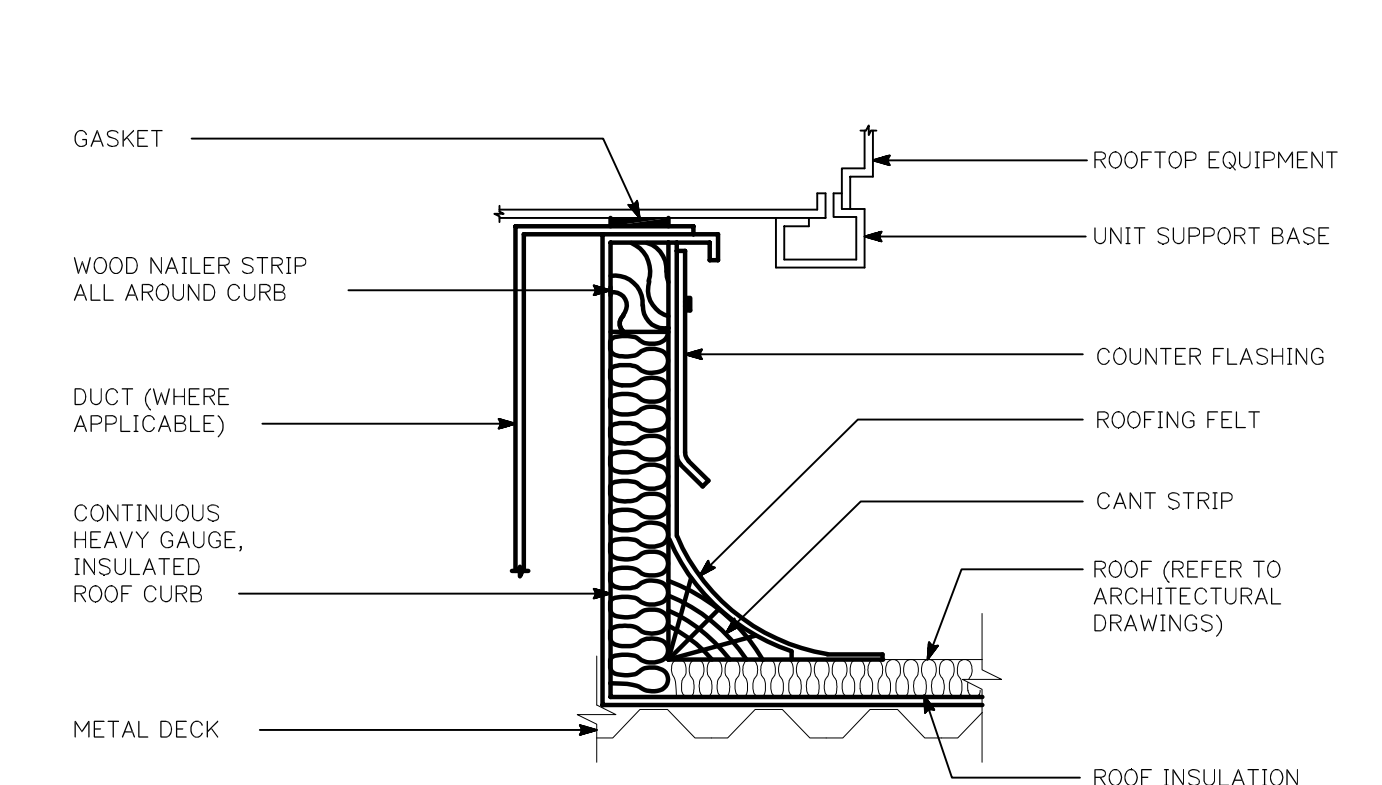


AIR-TITE SIZE CHART

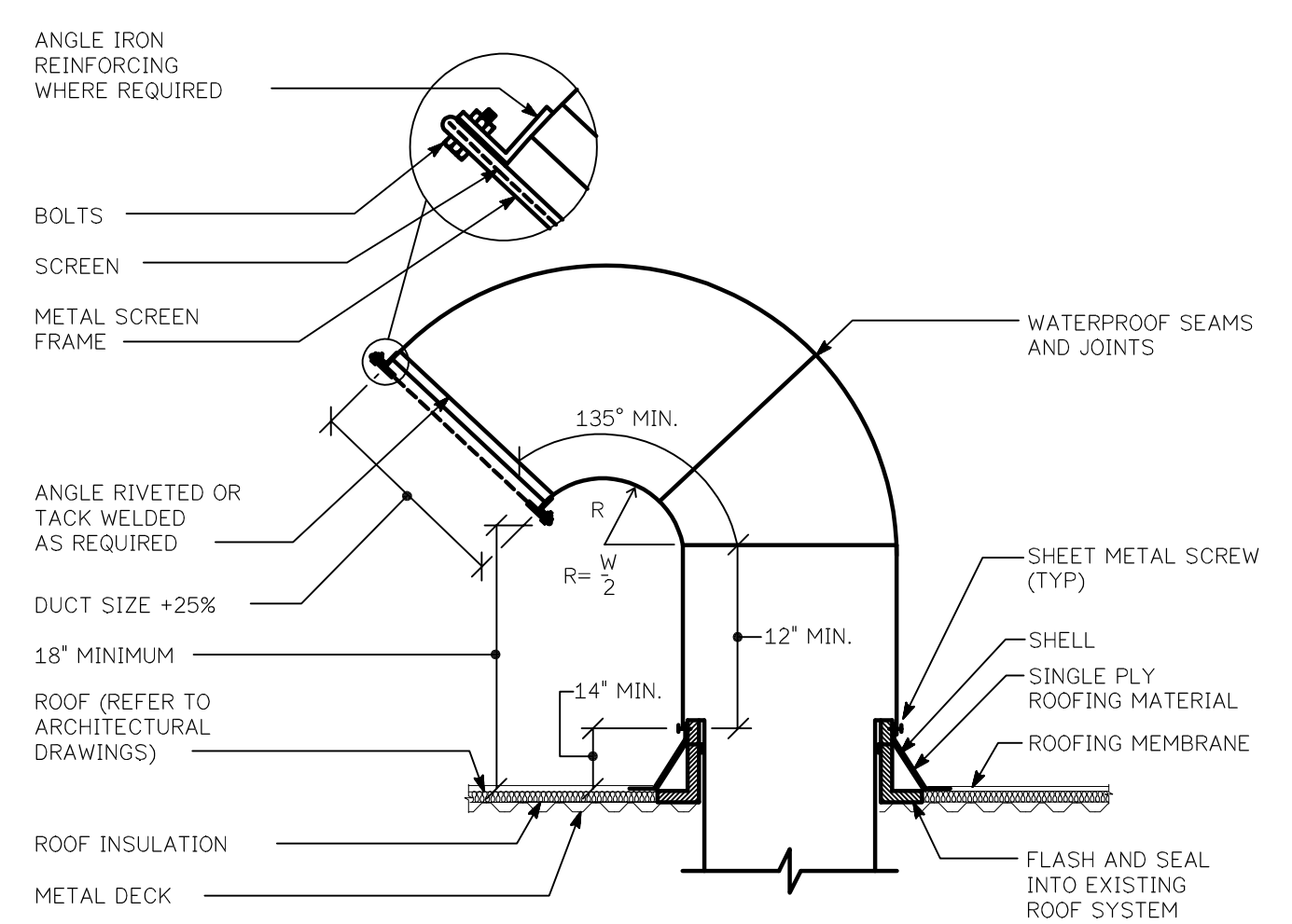
DUCTSIZE	CONNECTION RING	DUCTSIZE	CONNECTION RING
5"	8"	9"	12"
6"	9"	10"	13"
7"	10"	11"	15"
8"	11"	12"	17"

NOTE:
WHERE CONNECTION RING SIZE IS LARGER THAN SUPPLY DUCT, THEN CONNECTION RING SHALL BE CRIMPED OVER DUCT AND CONNECTED, SCREWED & SEALED ON TOP AND BOTTOM OF SUPPLY DUCT.

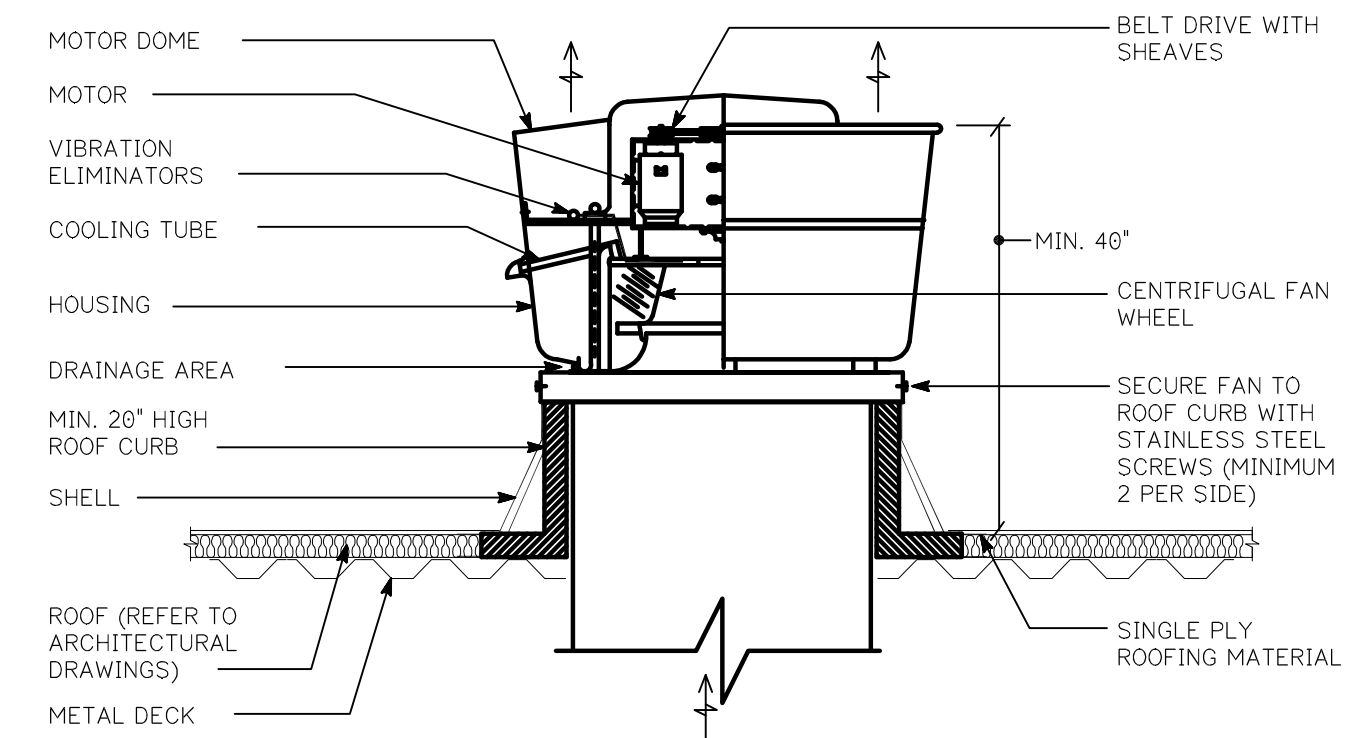
AIR-TITE SPIN-IN FITTING DETAIL
NO SCALE



EQUIPMENT ROOF CURB DETAIL
NO SCALE

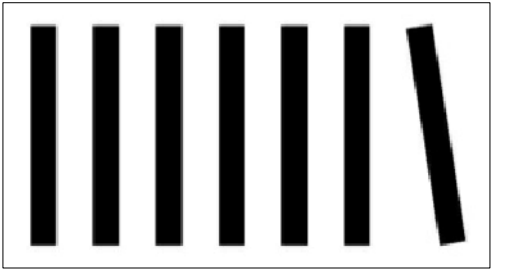


GOOSENECK THRU ROOF DETAIL
NO SCALE



**ROOF MOUNTED UP-BLAST
GREASE EXHAUST FAN DETAIL**
NO SCALE

NOTES:
1) FANS USED FOR KITCHEN EXHAUST SHALL BE SUPPLIED WITH GREASE TROUGH ON FAN WITH GREASE COLLECTOR
2) CONTRACTOR SHALL PROVIDE GREASE GUARD ROOF PROTECTION SYSTEM AND SHALL EXTEND A MINIMUM OF 12\"/>



GRUPO 7 ARCHITECTURE + INTERIORS
1322 14th Street NW
Third Floor
Washington, DC 20005
202.342.0890

MEZEH GRILL
209 Marketplace Boulevard
Block 2613, Lot 38
Township of Hamilton
Mercer County, New Jersey

CONSULTANT:



TELEAGENT ENGINEERING INC.
2216 Commerce Road, Suite 1
Forest Hill, MD 21050
410-692-5816
www.tel-eng.com

CERTIFICATION:

ISSUE:

PERMIT SET	04.14.22
△ PERMIT REVISION	07.28.22
△ PERMIT REVISION	10.03.22

IDC PROJECT #: 22-010
SHEET TITLE:

MECHANICAL DETAILS

SHEET NUMBER:

M501

GAS FIRED ROOFTOP UNIT SCHEDULE

ITEM#	AREA SERVED	NOMINAL TONS	FAN DATA					R-410A COOLING DATA (BTUH)				HEATING DATA (BTUH)				ELECTRICAL		WEIGHT (LBS.)	MODEL #	MANUFACTURER	
			C.F.M.	OUTSIDE AIR	H.P.	E.S.P.	TYPE	TOTAL	SENSIBLE	ENTERING AIR		IEER	INPUT	OUTPUT	TEMP. RISE °F	NO. STAGES	VOLTS/PHASE				MCA/FUSE
										DB°F	WB°F										
RTU-1	DINING AREA	10.0	3,380	850	3.0	1.0'	BELT	113,895	83,210	80.3	67.0	12.7	210,000	168,000	33.4	2	208V/3Ø	49/60	1,254	DBG120-150	DAIKIN
RTU-2	KITCHEN/BOH	7.5	3,420	540	3.0	1.0'	BELT	90,104	67,418	76.6	63.8	12.7	210,000	168,000	44.5	2	208V/3Ø	42.7/50	1,199	DBG090-150	DAIKIN

NOTES:
 1) UNITS SHALL BE COMPLETE WITH 14" HIGH FACTORY ROOF CURB, BAROMETRIC RELIEF DAMPER, ENTHALPY CONTROLLED ECONOMIZER, POWERED CONVENIENCE OUTLET AND DISCONNECT SWITCH.
 2) UNITS 2,000 CFM SUPPLY AND GREATER SHALL BE PROVIDED WITH DUCT MOUNTED SUPPLY/RETURN SMOKE DETECTORS.
 3) UNITS SHALL BE CONTROLLED BY 24 HOUR/7 DAY PROGRAMMABLE THERMOSTAT AND SHALL HAVE FAN SET TO 'ON' POSITION DURING OCCUPIED TIMES.
 4) ALL UNITS TO COME WITH 2" MERV 8 FILTERS.

AIR BALANCE SCHEDULE

ITEM#	SUPPLY AIR	RETURN AIR	OUTSIDE AIR	MAKE-UP AIR	EXHAUST AIR
ALL AIR HANDLING UNITS	6,800	5,610	1,390		
ALL TOILET EXHAUST					300
ALL KITCHEN HOOD EXHAUSTS					4,837
MAKE-UP AIR UNIT				3,870	
SUB TOTALS	6,800	5,610	1,390	3,870	5,137
TOTAL RESULTING BUILDING PRESSURE:					+123

EXHAUST FAN SCHEDULE

ITEM#	AREA SERVED	C.F.M.	SONES	H.P./WATTS	FAN TYPE	E.S.P.	DRIVE TYPE	R.P.M.	ELECTRICAL DATA	CONTROL	WEIGHT (LBS.)	MODEL #	MANUFACTURER
EF-1	KITCHEN HOOD	4,837	21	5 HP	UTILITY SET	1.8'	BELT	998	208V/3Ø	HOOD	307	EADU240H	ECONAIRE
EF-2	TOILET ROOM	100	2.5	43.2 W	CEILING	0.5'	DIRECT	1075	115V/1Ø	SWITCH	12	GC-148	COOK
EF-3	TOILET ROOM	100	2.5	43.2 W	CEILING	0.5'	DIRECT	1075	115V/1Ø	SWITCH	12	GC-148	COOK
EF-4	JANITORS ROOM	100	2.5	43.2 W	CEILING	0.5'	DIRECT	1075	115V/1Ø	SWITCH	12	GC-148	COOK
EF-5	DISHWASHER HOOD	800	12	1/4 HP	DOWNBLAST	0.25'	DIRECT	1150	115V/1Ø	HOOD	75	CHP448	HALIFAX

NOTES:
 1) INTERLOCK GREASE FAN EF-1 WITH KITCHEN HOOD CONTROLS AND MAU-1.

DIRECT GAS FIRED MAKE-UP AIR UNIT SCHEDULE

ITEM#	AREA SERVED	FAN DATA				NATURAL GAS HEATING DATA (BTUH)				ELECTRICAL DATA	WEIGHT (LBS.)	MODEL #	MANUFACTURER
		C.F.M.	R.P.M.	H.P.	E.S.P.	INPUT	OUTPUT	TEMP. RISE °F	NO. STAGES				
MAU-1	KITCHEN HOOD	3870	1632	5.0	1.0	245,690	226,035	55	MULTI	208V/3Ø	704	EA2-D,250-20D	ECONAIRE

NOTES:
 1) UNIT SHALL BE COMPLETE WITH STARTER FOR EXHAUST FAN, DISCHARGE TEMPERATURE CONTROLS AND INLET AIR SENSOR. REFER TO KITCHEN HOOD DESIGN DRAWINGS FOR ADDITIONAL INFORMATION.
 2) UNIT SHALL BE INTERLOCKED WITH GREASE EXHAUST FAN EF-1.

CONSTANT VOLUME ROOFTOP UNIT SEQUENCE OF OPERATIONS

- DURING OCCUPIED PERIOD AS PROGRAMMED ON ASSOCIATED ROOFTOP THERMOSTAT, BLOWER FAN SHALL RUN CONTINUOUSLY AND OUTSIDE AIR DAMPERS SHALL OPEN TO MINIMUM.
- ON A CALL FOR HEATING, UNIT HEAT EXCHANGER SHALL BE ENERGIZED AND SHALL RUN UNTIL SETPOINT IS SATISFIED.
- ON A CALL FOR COOLING FROM THERMOSTAT, SYSTEM SHALL ENERGIZE (MECHANICAL COOLING) IN STAGES. WHEN OUTDOOR ENTHALPY (AS SENSED BY UNIT MOUNTED CONTROLS) IS BELOW ITS SETTING AND FREE COOLING IS AVAILABLE, UNIT MOUNTED ECONOMIZER SHALL BE ENABLED AND SHALL MODULATE DAMPERS BEYOND THEIR MINIMUM POSITIONS TO SATIFY THE SETTING OF (55°F ADJUSTABLE). DURING THIS CYCLE, MECHANICAL COOLING SHALL BE DISABLED. ENTHALPY CONTROLLER SHALL RESET THE OUTSIDE AIR DAMPERS TO MINIMUM AND SHALL ENERGIZE THE MECHANICAL COOLING WHEN THE SETTING IS EXCEEDED.
- DURING NIGHT SETBACK PERIOD AS PROGRAMMED ON ASSOCIATED ROOFTOP UNIT THERMOSTAT, BLOWER FAN SHALL BE OFF AND OUTSIDE AIR DAMPERS CLOSED. ON A CALL FOR HEATING OR COOLING, THE OUTSIDE AIR DAMPERS SHALL REMAIN CLOSED AND THE FAN OR ASSOCIATED HEAT EXCHANGER OR COMPRESSOR SHALL CYCLE UNTIL SPACE SETPOINTS ARE SATISFIED.
- UNIT SHALL BE DE-ENERGIZED IF SMOKE DETECTOR SENSES SMOKE OR ANY SAFETY/CONTROL EXCEEDS ITS LIMITS.

MISCELLANEOUS EQUIPMENT SEQUENCE OF OPERATIONS

- EXHAUST FANS**
- CEILING MOUNTED TOILET ROOM AND JANITOR'S CLOSET EXHAUST FANS SHALL BE INTERLOCKED WITH ON/OFF SWITCH. WHEN SWITCH IS TURNED 'ON', FAN SHALL BE ENERGIZED. WHEN SWITCH IS TURNED 'OFF', FAN SHALL BE DE-ENERGIZED.

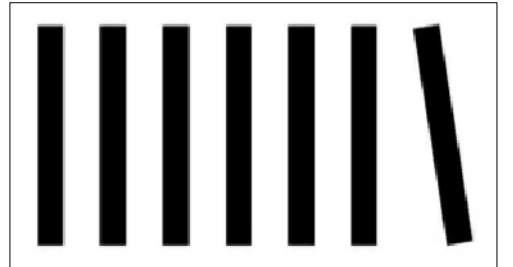
- KITCHEN EQUIPMENT**
- ROOF MOUNTED MAKE-UP AIR UNIT MAU-1 AND KITCHEN HOOD GREASE EXHAUST FAN EF-1 SHALL ALL BE INTERLOCKED WITH KITCHEN HOOD CONTROL PANEL (BY CAPTIVE AIRE) SO THAT ALL FANS ENERGIZE AND DE-ENERGIZE AT THE SAME TIME.

2018 INTERNATIONAL MECHANICAL CODE - VENTILATION CHART - RTU-1

SPACE NAME	A _z (FT ²)	R _a AREA OUTDOOR AIR RATE (CFM/FT ²)	R _a A _z AREA OUTDOOR AIR (CFM)	OCCUPANT LOAD RATE (# PEOPLE / 1,000FT ²)	P _z TOTAL # OF PEOPLE	R _p OCCUPANT OUTDOOR AIR RATE (CFM/PERSON)	R _p P _z OCCUPANT OUTDOOR AIR (CFM)	V _{bz} BREATHING ZONE OUTDOOR AIR (CFM)	E _z ZONE AIR DISTRIBUTION EFFECTIVENESS	V _{oz} ZONE OUTDOOR AIR	V _{sz} TOTAL SUPPLY AIR TO SPACE	Z _p OUTDOOR AIR FRACTION
100 - Customer Area	949	0.18	171	70	67	7.5	502.5	674	0.8	843	3200	0.27
103 - Bath	53	0	0	0	0	0	0	0	0.8	0	50	0
104 - Bath	53	0	0	0	0	0	0	0	0.8	0	50	0
Corridor	72	0.06	5	0	0	0	0	5	0.8	7	80	0.09
TOTAL	1127		176		67		502.5	679		850	3380	0.27
NOTES: RTU-1 to be balanced to 850 cfm Outdoor Air										System Ventilation Efficiency E _v = 0.88		
										Uncorrected Outdoor Air Intake = 678.5		
										Total required Outdoor Air V _{o,r} = 772		CFM

2018 INTERNATIONAL MECHANICAL CODE - VENTILATION CHART - RTU-2

SPACE NAME	A _z (FT ²)	R _a AREA OUTDOOR AIR RATE (CFM/FT ²)	R _a A _z AREA OUTDOOR AIR (CFM)	OCCUPANT LOAD RATE (# PEOPLE / 1,000FT ²)	P _z TOTAL # OF PEOPLE	R _p OCCUPANT OUTDOOR AIR RATE (CFM/PERSON)	R _p P _z OCCUPANT OUTDOOR AIR (CFM)	V _{bz} BREATHING ZONE OUTDOOR AIR (CFM)	E _z ZONE AIR DISTRIBUTION EFFECTIVENESS	V _{oz} ZONE OUTDOOR AIR	V _{sz} TOTAL SUPPLY AIR TO SPACE	Z _p OUTDOOR AIR FRACTION
101 - Food Production	912	0.12	110	20	19	7.5	142.5	253	0.8	317	3200	0.1
106 - Prep	257	0.12	31	20	6	7.5	45	76	0.8	95	220	0.44
TOTAL	1169		141		25		187.5	329		412	3420	0.44
NOTES: RTU-2 to be balanced to 540 cfm Outdoor Air										System Ventilation Efficiency E _v = 0.71		
										Uncorrected Outdoor Air Intake = 328.5		
										Total required Outdoor Air V _{o,r} = 463		CFM



GRUPO 7 ARCHITECTURE + INTERIORS
 1322 14th Street NW
 Third Floor
 Washington, DC 20005
 202.342.0890

MEZEH GRILL
 209 Marketplace Boulevard
 Block 2613, Lot 38
 Township of Hamilton
 Mercer County, New Jersey

CONSULTANT:



TELEAGENT ENGINEERING INC.
 2216 Commerce Road, Suite 1
 Forest Hill, MD 21050
 410-692-5816
 www.tel-eng.com

CERTIFICATION:

ISSUE:

PERMIT SET	04.14.22
△ PERMIT REVISION	07.28.22
△ PERMIT REVISION	10.03.22

IDC PROJECT #: 22-010
 SHEET TITLE:

MECHANICAL SCHEDULES

SHEET NUMBER: **M601**

PARALLEL CIRCUIT - WIRE SIZE
 1. WIRE SIZE SHALL BE BASED ON THE SIZE OF THE LINE WITH THE WIRE SIZE DIRECT FROM THE
 2. WIRE SIZE SHALL BE THE SAME AS THE WIRE SIZE OF THE LINE WITH THE WIRE SIZE DIRECT FROM THE
 3. WIRE SIZE SHALL BE THE SAME AS THE WIRE SIZE OF THE LINE WITH THE WIRE SIZE DIRECT FROM THE
 4. WIRE SIZE SHALL BE THE SAME AS THE WIRE SIZE OF THE LINE WITH THE WIRE SIZE DIRECT FROM THE
 5. WIRE SIZE SHALL BE THE SAME AS THE WIRE SIZE OF THE LINE WITH THE WIRE SIZE DIRECT FROM THE
 6. WIRE SIZE SHALL BE THE SAME AS THE WIRE SIZE OF THE LINE WITH THE WIRE SIZE DIRECT FROM THE
 7. WIRE SIZE SHALL BE THE SAME AS THE WIRE SIZE OF THE LINE WITH THE WIRE SIZE DIRECT FROM THE
 8. WIRE SIZE SHALL BE THE SAME AS THE WIRE SIZE OF THE LINE WITH THE WIRE SIZE DIRECT FROM THE
 9. WIRE SIZE SHALL BE THE SAME AS THE WIRE SIZE OF THE LINE WITH THE WIRE SIZE DIRECT FROM THE
 10. WIRE SIZE SHALL BE THE SAME AS THE WIRE SIZE OF THE LINE WITH THE WIRE SIZE DIRECT FROM THE
 11. WIRE SIZE SHALL BE THE SAME AS THE WIRE SIZE OF THE LINE WITH THE WIRE SIZE DIRECT FROM THE
 12. WIRE SIZE SHALL BE THE SAME AS THE WIRE SIZE OF THE LINE WITH THE WIRE SIZE DIRECT FROM THE

NOTES
 DRAWING CONTAINS IMPORTANT INFORMATION FOR COORDINATION WITH M/E/P ENGINEER

KITCHEN FAN DETAILS

CUSTOMER APPROVAL TO MANUFACTURE:
 Approved as Noted
 Approved with No Exception Taken
 Resub and Resubmit
 Signature: _____
 Your Title: _____ Date: _____

REVISIONS

DATE: 3/3/2022
 DWG.#: 1358624
 DRAWN BY: AD-32
 SCALE: NTS
 MASTER DRAWING

Mezeh - Hamilton, NJ
 130 Marketplace Blvd, Block 2613, Lot 38
 Hamilton Township, NJ, 08891

SHEET NO.
 5

ELECTRICAL PACKAGE - JOBSHEET

NO.	TAB.	PACKAGE #	LOCATION	DESCRIPTION	QUANTITY	OPTION	WIRE CONTROLLED
1	DOH-111	UTILITY CABINET/STG	UTILITY CABINET/STG	UTILITY CABINET/STG	1	SMART CONTROL BOX	YES

TYPICAL CONTROL CENTER INSTALLATION

CUSTOMER APPROVAL TO MANUFACTURE:
 Approved as Noted
 Approved with No Exception Taken
 Resub and Resubmit
 Signature: _____
 Your Title: _____ Date: _____

SEQUENCE OF OPERATION - HOOD CONTROLS
ELECTRICAL PACKAGE: DOH SERIES
 Once all power, light and temperature sensor circuits are properly landed on the control terminal block the LCD interface will be illuminated. All temperature readings are measured by resistive temperature sensors (thermistors) installed in each hood exhaust riser. One room temperature sensor is installed in the space to measure ambient air temperature.
 Two methods to activate system:
Manual activation:
 1. Operator presses the fan button to engage the exhaust fan(s) and the exhaust fan(s) begin operation in low-CFM Prep Mode. Dedicated make-up air units (if applicable) for the hood remain off in Prep Mode.
 2. Operator turns on the cooking appliances. Once the exhaust air temperature reaches 10 degrees (F) above ambient temperature in the space, the exhaust system will ramp up to a preset minimum speed (low-volume cooking conditions). Makeup air fan will power on at this point (also at minimum speed).
 3. As the temperature of the exhaust air increases, the exhaust and make-up air fan speeds increase proportionally. The fans will modulate between preset low-speed and high-speed exhaust levels, dependant upon on the exhaust air temperature (cooking load).
 4. At any point, operator may engage the 100% override option on the touch screen and run the fans at full speed for a fixed period of time (adjustable). After this period, fan modulation based on temperature will resume.
Automatic activation:
 1. If the operator does not manually engage the exhaust system, the SC-EMS will automatically activate Prep Mode when the exhaust air temperature reaches 5 degrees above ambient temperature. When the air temperature of the hood collar increases to 10 degrees above ambient, the exhaust and makeup air fans will ramp up to preset low speeds for low volume conditions.
 2. System will continue operating per steps 3 & 4 (above).
 At the end of the day, after cooking operations have ceased, the system will enter its Cool Down mode (similar to Prep mode). Once the exhaust air temperature drops to less than five degrees above ambient, the fans will shut off.

DEMAND CONTROL VENTILATION SYSTEM NOTE
 FAN(S) TO BE CONTROLLED BY A MODULATING ENERGY MANAGEMENT SYSTEM, PRE-WIRED VARIABLE FREQUENCY DRIVES (VFD) ARE INCLUDED IN THE MANUFACTURER'S CONTROL PACKAGE. FAN MOTORS MUST BE INVERTER-DUTY AND COMPATIBLE WITH A VARIABLE AIR VOLUME APPLICATION.

NOTE TO ELECTRICAL CONTRACTOR
 CAPTIVEAIRE HOOD CONTROL PACKAGE IS FURNISHED BY KITCHEN EQUIPMENT CONTRACTOR AND SHOWN ON ELECTRICAL DRAWINGS FOR COORDINATION PURPOSES ONLY. ALL FIELD WIRING AND INTERLOCKS TO BE COMPLETED BY ELECTRICAL CONTRACTOR. CONTACT CAPTIVEAIRE WITH QUESTIONS REGARDING SCOPE OF WORK: (800) 988-0881

HOOD CONTROL DETAILS

CUSTOMER APPROVAL TO MANUFACTURE:
 Approved as Noted
 Approved with No Exception Taken
 Resub and Resubmit
 Signature: _____
 Your Title: _____ Date: _____

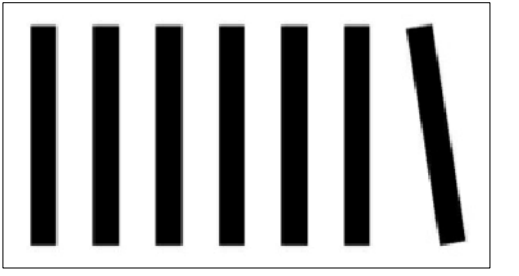
REVISIONS

DATE: 3/3/2022
 DWG.#: 1358624
 DRAWN BY: AD-32
 SCALE: NTS
 MASTER DRAWING

Mezeh - Hamilton, NJ
 130 Marketplace Blvd, Block 2613, Lot 38
 Hamilton Township, NJ, 08891

SHEET NO.
 6

DRAWINGS ARE NOT TO SCALE AND ARE FOR REFERENCE ONLY. FOR ALL QUESTIONS CONCERNING HOODS AND/OR EQUIPMENT/FANS, CONTACT CAPTIVEAIRE AT 1-800-988-0881



GRUPO 7 ARCHITECTURE + INTERIORS
 1322 14th Street NW
 Third Floor
 Washington, DC 20005
 202.342.0890

MEZEH GRILL
 209 Marketplace Boulevard
 Block 2613, Lot 38
 Township of Hamilton
 Mercer County, New Jersey

CONSULTANT:



TELEAGENT ENGINEERING INC.
 2216 Commerce Road, Suite 1
 Forest Hill, MD 21050
 410-692-5816
 www.tel-eng.com

CERTIFICATION:

ISSUE:

PERMIT SET	04.14.22
PERMIT REVISION	07.28.22
PERMIT REVISION	10.03.22

IDC PROJECT #: 22-010
 SHEET TITLE:

CAPTIVEAIRE DRAWINGS

M702

SHEET NUMBER:

MECHANICAL SPECIFICATIONS

SECTION 15010 - BASIC MECHANICAL REQUIREMENTS

- The work of each of the following sections includes furnishing and installing the material, equipment and systems complete as specified and/or indicated on the drawings. The installations, when finished, shall be complete and coordinated, ready for satisfactory service.
- All work under this contract shall be done in strict accordance with all applicable municipal, state, county, NFPA, International and local codes that govern each particular trade.
- The contractor shall make applications and pay all charges for all necessary permits, licenses and inspections as required under the above codes. Upon completion of the work, the customary certifications of approval shall be furnished. The contractor shall also coordinate and make all required submissions to the local utility companies as required.
- No materials or equipment shall be used in the work until approved. Before submission of the shop drawings, and not more than thirty (30) days after award of the contract, the contractor shall submit for approval, a complete list of all materials and equipment which he intends to furnish, giving manufacturer and catalog numbers. A complete list of proposed sub-contractors shall also be submitted.
- The contractor shall examine all drawings and specifications and shall visit the site and inspect the existing conditions in person. Certain areas may have been in-accessible at the time of the engineers survey and may only be visible during or after the demolition phase; therefore, those H.V.A.C. systems and coordination of those systems, shall become the responsibility of the contractors. Failure to comply with this requirement shall not relieve the contractors of their responsibilities for complying with the intent of the contract documents.
- The drawings indicate the general arrangement of the mechanical installations. Details of proposed departures due to actual field conditions or other causes shall be submitted for approval prior to installation. Reworking of completed items due to improper field coordination shall be at the contractor's expense.
- Provide sufficient access and clearance for all items of equipment requiring servicing and maintenance, such as valves, dampers, controls, drives, drains, vents, starters, switches, filters, traps and major items of equipment.
- The contractor shall perform all necessary cutting and patching as required to complete the installation of the all mechanical work. Patching of walls, floors, ceilings, roof, etc. shall match the adjacent surfaces.
- The contractor shall prepare three (3) copies of a record and information booklet. The booklet shall be bound in a three ring loose-leaf binder. Provide the following data in the booklet:
 - Catalog data on each piece of equipment furnished
 - Approved shop drawings on each piece of equipment furnished
 - Maintenance, operation and lubrication instruction on each piece of equipment furnished
 - Simplified temperature control diagrams of all H.V.A.C. systems
 - Manufacturer's and contractor's guarantees
 - Air balancing reports
 - Commissioning reports as required
 - Schedule/description of all service work/maintenance inspections required by the paragraphs of this section
- All parts of the heating, ventilating, air conditioning and exhaust systems shall be adjusted, checked, balanced and tested by an independent A.A.B.C. or N.E.E.B.B. certified testing and balancing contractor approved by the owner. The contractor shall put all systems and equipment into full operation, and shall test and balance all devices to within ten (10) percent of capacities indicated on the drawings. Submit copies of the balancing reports to the architect. Permanently mark the position of each balancing damper.
- Upon completion of the mechanical installations, the contractor shall provide a complete set of prints of the contract drawings which shall be legibly marked in red pencil to show all changes and departures of the installation as compared with the original design. They shall be suitable for use in preparation of as-built drawings.
- All new installations, including all materials and labor shall be guaranteed for a period of one (1) year from date of owner acceptance. The above shall not in any way void or abrogate equipment manufacturer's guarantee or warranty. Certificates of guarantee shall be delivered to the owner.
- Contractor shall also provide one (1) year free service to keep the equipment in operating condition. This service shall be provided and rendered upon request when notified of any equipment malfunction.
- In addition to the first year warranty period, the contractor shall provide, at no additional cost to the owner, a minimum of four (4) service calls and maintenance inspections. A complete outline of the required maintenance and the proposed schedule shall be included in a "record and information booklet", for review and acceptance by the owner/representative and engineer. The inspections are to be performed at three (3) month intervals for a total of four (4) service calls and inspections during the first year warranty period plus the original system start-up commissioning. The service work and inspections shall include, but not be limited to the following:
 - Replace all H.V.A.C. air filters before occupancy
 - Lubricate all motor and fan bearings as required
 - Clean drain pans and drain lines
 - Check and tighten all electrical connections as required
 - Inspect all belts for adjustment and condition, replace as required
 - Check operating pressures and refrigerant charge
 - Inspect all controls for correct operation and calibrate as required
 - Perform all maintenance as outlined in the equipment manufacturers operation and maintenance manuals. Upon completion of each scheduled inspection, the contractor shall deliver to the building owner or owners representative, within (48) hours of completion, two(2) copies of the completed inspection report for record purposes.
- The service contractor shall, at the ninth month, advise the owner of the termination date of the above services. This contractor shall also provide the owner with a detailed proposal, reflecting annual escalation, for the continuation of the services and inspections described above.

SECTION 15250 - MECHANICAL INSULATION

- All rectangular supply, return, make-up air and outside air ductwork shall be insulated with fiberglass insulation. All insulation shall be noncombustible or shall have a flame spread index of not more than 25 and a smoke-development index of not more than 50 when tested in accordance with ASTM E84.
- Ductwork shall be wrapped with nominal 2" thick glass fiber blanket insulation with "installed" thermal conductivity 'K' value of 0.25 at 75°F mean temperature and thermal resistance 'R' value of 6.0 at 1-1/2" compressed thickness. Owens Corning "SOFT" fiberglass type 100 with foil faced vapor barrier. Insulation shall be neatly installed and suitable for 40°F-250°F duct temperatures.
- All exposed spiral supply air ductwork shall be Lindab, double wall with standard 1" inner wall fiberglass insulation and self-sealing/gasketed joints, or approved equal.
- All internal duct lining shall be as specified under section 15880. All interior rectangular ductwork exposed within condition spaces may be provided with internal lining only, with no external duct wrap. Refer to drawings for additional notes. Internal lining shall not be used for ductwork system conveying wet/moist air (ie: shower rooms, dishwasher hoods, etc.).
- Rectangular kitchen hood grease exhaust ductwork shall have (2) layers of 1.5" thick, zero (0") clearance, 2 hour fire wrap on all ductwork located within space and/or ceiling plenum, from hood connection to exhaust fan connection. Duct wrap shall be 3M FireBarrier 615 or approved equal installed with a 2-layer fire resistant wrap system. Fire wrap shall be installed in accordance with ASTM E 2336, International Mechanical Code, NFPA 96 and all local and state codes and shall pass the ICBO AC101 internal test. Install per manufacturer's recommendations.

SECTION 15500 - HEATING, VENTILATING & AIR CONDITIONING (HVAC)

- The work to be performed shall include all labor, materials and equipment necessary to furnish and install complete, all H.V.A.C. mechanical equipment as shown on drawings and/or hereinafter specified. It is the intent that the systems be installed complete with all items necessary to provide satisfactory service.
- All existing H.V.A.C. units serving the project areas shall be fully serviced including but not limited to: check/charge refrigerant, check/replace belts, change filters, check/clean heating and cooling coils, lubricate, rebalance, etc. and verify proper operation to ensure maximum capacity.
- All heating, ventilating and air conditioning equipment which contains compressors shall be provided with extended warranties covering the compressors for a minimum of four (4) years.
- Packaged Rooftop Heating/Cooling Units:**

All rooftop units shall be factory assembled, piped, internally wired and fully charged with R-410A refrigerant. Cooling and heating capacities shall be rated in accordance with AHRI standards and unit design shall be certified by the American Gas Association (AGA), specifically for outdoor applications using natural gas. All cooling units shall be Underwriters' Laboratory listed. All units shall be designed for outdoor rooftop level installation. Exterior surfaces of all units shall be phosphatized, zinc-coated steel with epoxy resin primer and baked enamel finish.

All casing panels shall be 20 gauge steel, gasketed and insulated with one (1) inch, one (1) pound density foil-faced glass fiber. Insulation shall be on the heat exchanger and evaporation section. Cabinet construction shall allow for all maintenance on one side of the unit.

Refrigeration cycle controls shall include condenser fan, evaporator fan and compressor contractor. Compressor shall be equipped with a combination internal winding thermostat/current overload. Internal high pressure relief shall also be provided. All units shall have direct drive, hermetic sealed compressors. Compressors shall be equipped with over temperature, over current and high pressure controls. Crank case heaters shall be standard on all models.

Evaporator coil shall be seamless copper tubing mechanically bonded to aluminum fins and shall be factory pressure and leak tested at 225 psig.

Both evaporator and condenser coil shall have drain pans. Evaporator pan shall be internally seated and insulated. Threaded drain connection shall be provided in evaporator section with a drain opening in condensing section.

Condenser coil shall be seamless copper tubing mechanically bonded to aluminum fins. Each coil shall be factory pressure and leak tested at 425 psig.

Indoor air fan shall be belt/direct drive, forward curved, centrifugal type. Motor shall have thermal overload protection and permanently lubricated fan and motor bearings. Motor/blower assembly shall be isolated from unit with rubber mounts. Fans shall be capable of 2-speeds.

Condenser fan shall be direct-drive, statically and dynamically balanced, upflow propeller type. Weatherproofed permanent split capacitor fan motor shall have built-in thermal overload and permanently lubricated sleeve bearings.

Gas-fired heating section shall be completely assembled, wired and piped. Design shall be certified by AGA, specifically for outdoor application.

Electronic ignition system shall light pilot each time the thermostat calls for heat. Flame sensor shall prove pilot flame and turn on main burners. Should a loss of pilot flame occur the main valve shall close and the spark shall reoccur within 0.8 seconds. When the thermostat is satisfied, both pilot and main burner shall be extinguished.

Forced combustion blower shall insure flame stability under varying wind conditions and shall provide higher combustion efficiency and location flexibility.

Heat exchanger shall be aluminumized steel. Heat exchanger shall be factory tested for leaks, stress relieved and of free floating design. Heat exchanger shall be located upstream of the cooling coil for minimum condensation. Design shall be certified by AGA specifically for outdoor application. Burners shall be stamped and seam-welded with 20 gauge aluminumized steel.

Units shall be as manufactured by Daikin, Trane, Carrier, York or approved equal.

- Smoke detectors:** Detectors shall be installed in the supply and return air ductwork for all system supplying equal or greater than 2,000 cfm of air and shall be U.L. 268A, NFPA 90A, NFPA 72 and FM approved and listed. They shall contain a photoelectric type detector and air sampling chamber with sampling tubes extending through the width of the air duct. Unit shall be System Sensor InnovairFlex series, photoelectric model D4120 (4 wire) or approved equal, with an ionization type detector and self-contained control unit.

Contractor shall provide and install a wall/ceiling mounted remote audible/visual alarm device with red trouble light and green power light, located in a public and visible location near the general area of the rooftop unit, which shall be System Sensor model APA151 or approved equal and compatible with smoke detector provided.

In areas where smoke detector maintenance and inspection is not easily accessible, contractor shall also provide a wall/ceiling mounted remote test/reset device (with key). Device shall be System Sensor model RTS151KEY or approved equal and compatible with smoke detector provided.

Coordinate installation of all detection devices with the controls contractor. Detectors connected to the building fire alarm system specified in Division 16-Electrical, shall be coordinated with the voltage and signal contact configuration.

SECTION 15880 - AIR DISTRIBUTION

- Furnish all labor and materials necessary to complete the sheet metal work associated with the heating, ventilating, air conditioning and exhaust systems, and other miscellaneous items shown and required.

- All supply, return, outside air, make-up air and exhaust ductwork shall be constructed and installed in accordance with the sheet metal and air conditioning contractors national association (SMACNA) standards and ASHRAE standards.

- All grease ductwork from kitchen hoods to exhaust fans shall be constructed of minimum 18 gauge stainless steel or 16 gauge carbon/ mild steel iron all welded construction with welded joints and installed in accordance with the local Health Department and NFPA codes. All horizontal ductwork less than 75' in length shall slope at minimum 1/4" per foot back towards hood. All horizontal ductwork longer than 75' in length shall slope at minimum 1" per foot. As an option, the contractor may use "Captive Aire" model DW-3Z or "Metal-Fab" model 3G, round, 20 gauge, double wall, stainless steel ductwork as approved by the local jurisdiction. Ductwork is ETL listed to UL-1978 and UL-2221 standards. Ductwork sections to be installed using manufacturer's clamp locking connections with 3M Fire Barrier 2000+ silicone to seal all joints. Ductwork provides "0" clearances to combustibles installation. Ductwork does not require welding.

As an option, the contractor may use "Captive Aire" model DW-3Z or "Metal-Fab" model 3G, round, 20 gauge, double wall, stainless steel ductwork as approved by the local jurisdiction. Ductwork is ETL listed to UL-1978 and UL-2221 standards. Ductwork sections to be installed using manufacturer's clamp locking connections with 3M Fire Barrier 2000+ silicone to seal all joints. Ductwork provides "0" clearances to combustibles installation. Ductwork does not require welding.

- Access doors located in grease exhaust ductwork shall be minimum 12"x12" hinged access doors and located at all turns, a maximum of every 20' minimum for horizontal ducts, at each floor level for vertical ducts and as required by local/state codes. Cleanouts shall be located on side of duct or on top of ductwork where side installation is not possible. Where a 12"x12" opening is not possible on side or top, the cleanout shall be located on side or top which provides the largest opening. Cleanouts located on sides shall be a minimum of 1.5" from the bottom edge and a minimum of 1" from the top edge. Cleanouts located on tops shall be a minimum of 1" from each edge. All cleanouts shall be equipped with tight fitting gasketed doors which are operable without the use of a tool. Doors, frames, gaskets, etc. shall meet NFPA 96, be U.L. listed, grease tight and shall not penetrate the exhaust duct walls. Cleanouts shall be Flame Gard, Inc. or approved equal.

- Flexible ductwork shall be Hart & Cooley type F216 or approved equal. Flexible duct shall comply with NFPA bulletin 90A and shall be U.L. Listed as class 1 air duct and connector, standard 181, with R-6 value insulation and microbial resistant. Maximum length of runout shall not exceed 6'-0".

- Support horizontal ducts with hangers spaced not more than six (6) feet apart. Use strap hangers for ducts up to thirty (30) inches wide, angle hangers or rods for ducts over thirty (30) inches wide. Strap hangers to be one (1) inch wide, 20 gauge minimum; fasten to sides and bottom of duct with sheet metal screws.

- Ducts shall be straight and smooth on the inside, with joints neatly finished. Ducts shall be suspended from the construction and shall be free from vibration. Curved elbows shall have a center radius equal to one and one-half (1-1/2) times the width of the duct. All square turns shall be vaned. Vanes consisting of curved metal blades shall permit the air to make abrupt turns without turbulence.

- All joints, seams and connections in the heating, ventilating, and air conditioning and exhaust system ductwork shall be sealed air tight. Sealant shall be as manufactured by Hard Cast Inc. or approved equal and shall consist of a mineral impregnated woven fiber tape and an actuator adhesive. Sealant shall be SMANCA and U.L. approved, with a flame spread of 10 and a smoke developed of 0, non-toxic and non-flammable. Sealant shall be approved for operating temperatures from 0 degrees F. to 200 degrees F. Sealant system shall be installed in strict accordance with the manufacturer's recommendations and when applied shall provide a permanent seal without any deterioration.

- All rectangular supply and return air ductwork within fifteen (15) feet of each air handling unit shall be lined on the interior for sound attenuation. Lining shall have a one (1) inch thickness and shall be glued with one hundred (100) percent coverage and additionally secured with pins. Increase duct sizes indicated two (2) inches direction to accommodate the interior lining. Dimensions shown on drawings are clear inside dimensions. Liner shall be a non-fibrous elastomeric thermal (and acoustical) material, closed cell, moisture resistant with anti-microbial agent. Material shall meet ASTM E84 25/50 fire rating (NFPA 90A & 90B), ASTM G 21 & 22, VOC guidelines, ASTM C 518, etc.. Lining shall be Nomaco K-Flex Gray, Evonikfoams Solcoustic or approved equal.

- Exposed spiral supply air ductwork registers shall have all steel construction supply air registers with 3/4" spaced, double deflection louvers, internal volume damper and finished with #26 off-white enamel. Lindab model RGS-3 or approved equal.

- Supply air diffusers located in kitchen areas near kitchen exhaust hoods shall have all steel construction with perforated face, 18"x18"neck with 6" tall supply plenum and finished with #26 off-white enamel. Air pattern shall be directed away from hood. Titus model PMC, Metal-Aire, Krueger or approved equal.

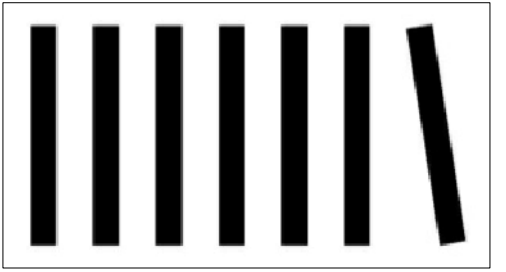
- Return air grilles shall have all steel construction with 1/2" spaced louvers, 30 degree deflection and finished with #26 off-white enamel. Titus model 25R, Metal-Aire, Krueger or approved equal.

- Ceiling mounted fans shall be as manufactured by Cook. Fans shall have acoustically insulated housings and shall have a maximum sound level rating of 6.0 sones. Air deliveries shall be as indicated on the drawings and all fans shall bear the AMCA certified ratings seal and the U.L. label. Integral backdraft damper shall be totally chatter proof with no metal contact. Fan shall have true centrifugal wheels with inlet perpendicular to, or remote from, inlet grille. Ceiling mounted exhaust fan grilles shall be of aerodynamic design of white molded plastic eggcrate shape and provide eighty-five (85) percent free open area. Terminal box shall be provided on the housing with cord, plug, and receptacle inside the housing. Entire fan, motor and wheel assembly shall be easily removable without disturbing the housing. Motor speeds shall not exceed 1600 rpm and all fan motors shall be suitably grounded and mounted on rubber-in-shear vibration isolators.

SECTION 15950 - CONTROLS

- The controls contractor under this heading shall furnish and install all wiring and equipment necessary for a complete operational system including: automatic temperature controls, ventilation systems, exhaust systems, economizer systems, etc. as indicated on the drawings. The system shall include all necessary thermostats, relays, switches, transformers, contactors, etc. required for successful operation of all equipment as specified in the sequence operations. Electrical work in connection with all control systems shall be performed by the controls contractor and coordinated with the electrical contractor as needed to provide a full and complete package.

- Each (rooftop) unit shall be controlled by a wall mounted Honeywell model T-7350 heating/cooling thermostat with a (7) day/(24) hour program clock capable of (2) occupied/ non-occupied periods, with (2) heating/(2) cooling setpoints, remote temperature sensor capability (up to 9) and auxiliary contact for Honeywell economizer controls. Thermostat assembly shall be compatible with the air handling unit's economizer and/or accessory package as specified under section 15500. Coordinate control requirements with the proposed equipment. Dual heating/ cooling thermostats shall have a minimum 5 degree deadband.



GRUPO 7 ARCHITECTURE + INTERIORS
1322 14th Street NW
Third Floor
Washington, DC 20005
202.342.0890

MEZEH GRILL
209 Marketplace Boulevard
Block 2613, Lot 38
Township of Hamilton
Mercer County, New Jersey

CONSULTANT:



TELEAGENT ENGINEERING INC.
2216 Commerce Road, Suite 1
Forest Hill, MD 21050
410-692-5816
www.tel-eng.com

CERTIFICATION:

ISSUE:

PERMIT SET	04.14.22
△ PERMIT REVISION	07.28.22
△ PERMIT REVISION	10.03.22

IDC PROJECT #: 22-010

SHEET TITLE:

MECHANICAL SPECIFICATIONS

SHEET NUMBER:

M801