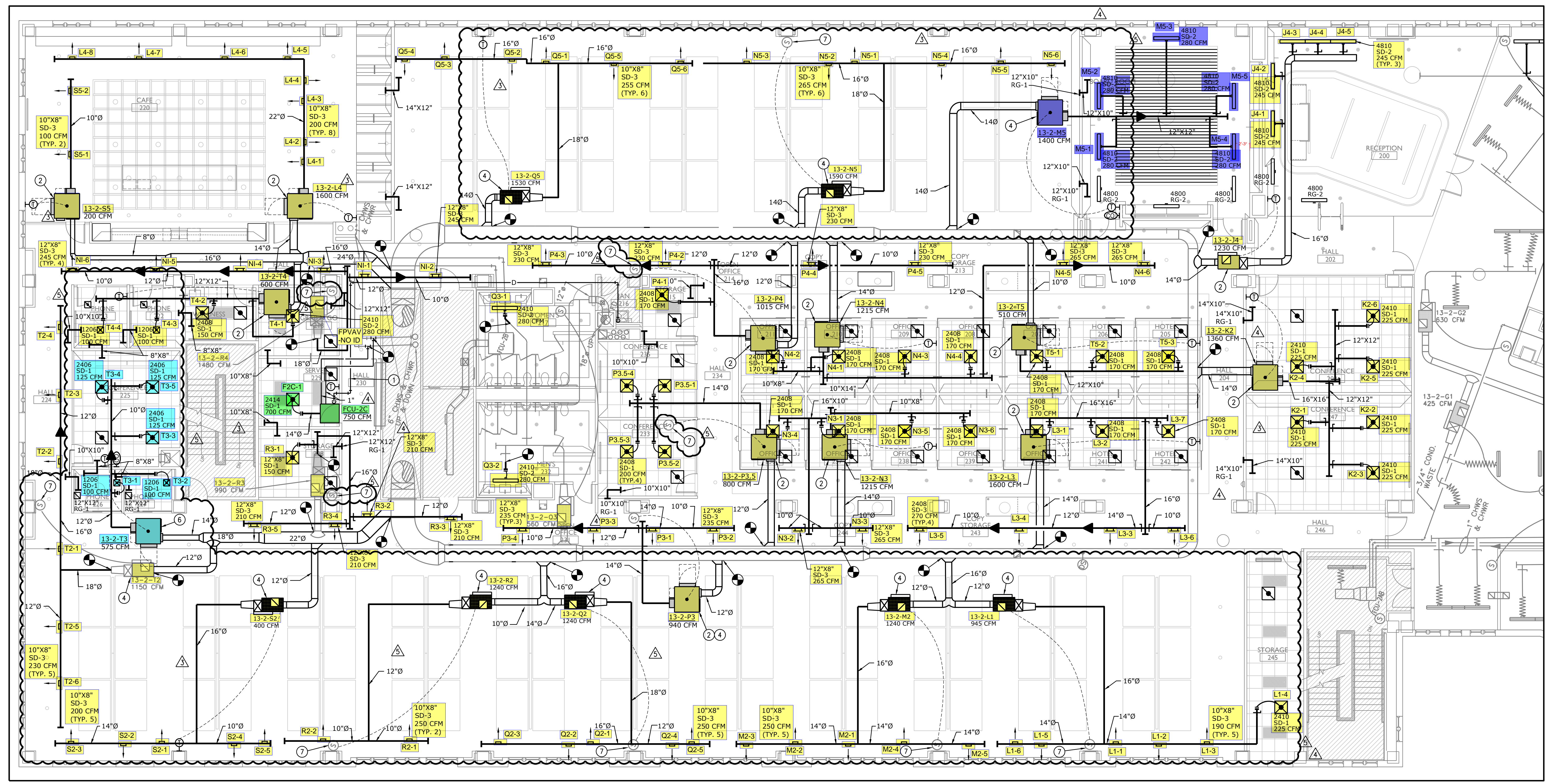


- PLAN NOTES:**
- ROUTE 3/4" CONDENSATE LINE TO JANITOR'S SINK AND TERMINATE WITH AIR GAP.
 - REINSTALL EXISTING FAN POWERED BOX RETAINED DURING DEMOLITION IN APPROXIMATE LOCATION SHOWN. MODIFY/EXTEND EXISTING CONDUIT/WIRING RETAINED DURING DEMOLITION TO ACCOMMODATE EQUIPMENT RELOCATION. COORDINATE WORK WITH OTHER TRADES.
 - REINSTALL EXISTING THERMOSTAT RETAINED DURING DEMOLITION. MODIFY/EXTEND EXISTING CONDUIT/WIRING AS NECESSARY FOR A COMPLETE INSTALLATION. COORDINATE WORK WITH OTHER TRADES.
 - RELOCATE EXISTING FAN POWERED BOX AS AND LOCATE NEW FAN POWERED BOX REQUIRED TO LOCATE BOX ABOVE GAPS IN CLOUDS FOR EASE OF MAINTENANCE, CONTRACTOR TO COORDINATE EXACT LOCATION OF EQUIPMENT SO THAT THE CONTROL PANEL AND FILTER ARE ACCESSIBLE FROM THE OPENING BETWEEN THE CLOUDS. MODIFY/EXTEND DUCTWORK AS REQUIRED FOR A COMPLETE INSTALLATION.
 - GRILLE TO BE LOCATED IN GAP BETWEEN CLOUD. COORDINATE EXACT LOCATION WITH ARCHITECTURAL DRAWINGS.
 - RELOCATE FAN POWERED BOX ABOVE GAPS CLOUDS AS SHOWN FOR EASE OF MAINTENANCE, CONTRACTOR TO COORDINATE EXACT LOCATION OF EQUIPMENT SO THAT THE CONTROL PANEL AND FILTER ARE ACCESSIBLE FROM THE OPENING BETWEEN THE CLOUDS. COORDINATE EXACT LOCATION WITH OWNER.
 - LOWER EXISTING THERMOSTAT TO BE 48" A.F.F. MODIFY/EXTEND EXISTING WIRING AS REQUIRED FOR A COMPLETE INSTALLATION.

- GENERAL NOTES:**
- INFORMATION SHOWN ON THE DRAWINGS IS INTENDED TO CONVEY SCOPE AND IS ARRANGED FOR DRAWING CLARITY. IT IS NOT TO BE TAKEN AS AN AS-BUILT CONDITION. THE SYSTEM INSTALLATION SHALL BE COORDINATED WITH STRUCTURE, CEILINGS, WALLS, AND ALL OTHER TRADES TO PROVIDE FOR A COMPLETE AND WORKING SYSTEM.
 - ALL DUCTWORK IS SHOWN DIAGRAMMATICALLY AND DOES NOT INCLUDE ALL OFFSETS, DROPS, AND RISES. CAREFULLY COORDINATE DUCT AND PIPE ROUTING WITH STRUCTURE AS WELL AS ALL OTHER TRADES TO MAINTAIN EQUIPMENT CLEARANCES, EQUIPMENT ACCESSIBILITY, DESIRED CEILING HEIGHTS, AND AESTHETICS. THE CONTRACTOR SHALL INCLUDE ANY NEEDED OFFSETS AND CHANGES OF DIRECTION IN THE BID PRICING.
 - COORDINATE ALL DUCT PENETRATIONS WITH STRUCTURAL PRIOR TO CUTTING FLOORS OR BEARING WALLS.
 - WALL MOUNTED DEVICES SUCH AS THERMOSTATS, TEMPERATURE SENSORS, HUMIDITY SENSORS, AND PRESSURE SENSORS ARE SHOWN ON PLANS FOR CLARITY AND GENERAL REFERENCE OF LOCATIONS. LOCATIONS SHOW ARE NOT TO BE CONSIDERED THE EXACT MOUNTING LOCATION. COORDINATE THE INSTALLATION OF ALL WALL MOUNTED DEVICES WITH THE ARCHITECTURAL ELEVATIONS AND OTHER TRADES WALL MOUNTED DEVICES. GROUP THE INSTALLATION OF ALL THE DEVICES TO THE EXTENT POSSIBLE AND LOCATED DEVICES SUCH THAT THEY DO NOT CONFLICT WITH MILL WORK, TELEVISIONS, FURNITURE, TEACHING BOARDS, AND OTHER SIMILAR OBSTRUCTIONS.
 - PROVIDE FIRESTOPPING AT PENETRATIONS OF ALL RATED WALLS. REFER TO CODE PLANS FOR LOCATIONS OF RATED WALLS.
 - FURNISH ALL EXPOSED DUCTWORK IN FINISHED SPACES WITH PAINTABLE FINISH. PROVIDE A TRIM FLANGE AT WALL PENETRATIONS OF EXPOSED DUCTWORK, FINISH BY ARCHITECT.

- GENERAL NOTES:**
- DUCT SIZES SHOWN ARE SHEET METAL DIMENSIONS. WHERE DUCT LINER IS REQUIRED, DUCT SIZES ARE NOT REQUIRED TO BE INCREASED TO ACCOUNT FOR LINER.
 - ALL SERVICES SHOWN WITH HALF TONE LINE WEIGHT ARE EXISTING.
 - RETURN GRILLES ARE 22"x22" RG-1 UNLESS NOTED OTHERWISE.
 - TEST & BALANCE CONTRACTOR TO BALANCE AIRFLOWS TO VALUES INDICATED ON THE PLANS.



HVAC - FLOOR PLAN
SCALE: 1/8" = 1'-0"

Security Benefit
6800 Sprint Parkway, 2nd Floor
Overland Park, KS 66211

rev	issue	date
	Design Development Set	09.11.2025
	Bid and Permit Set	10.09.2025
	ADDENDUM #3	10.24.2025
	CITY COMMENTS	11.01.2025
	ASH-03	12.18.2025

24.08 Security Benefit

M100

HVAC PLAN