

**SHEET NOTES**

- DUCT SIZES SERVING DIFFUSERS AND GRILLES ARE SAME SIZE AS DIFFUSER OR GRILLE NECK UNLESS NOTED OTHERWISE.
- REFER TO ELEVATIONS ON M2.I AND HOOD DETAILS ON M.H.I FOR CAPTURE-JET FANS DUCTING REQUIREMENTS.
- HARDPIPE SHALL BE USED FOR ALL TAKE-OFFS EXCEPT WHERE ALLOWED BY DETAIL 1/M3.I. USE OF FLEXIBLE DUCT SHALL BE LIMITED TO THOSE SITUATIONS WHERE NO OTHER MEANS TO ACCOMPLISH ROUTING IS POSSIBLE.
- COORDINATE NEW WORK WITH EXISTING CONDUITS, STRUCTURE AND PIPING. FIELD VERIFY EXISTING CONDITIONS PRIOR TO COMMENCING WORK. CONTRACTOR TO NOTIFY DESIGN TEAM WITHOUT DELAY IF ACTUAL LOCATION OF EXISTING MECHANICAL EQUIPMENT DOES NOT MATCH FLOOR PLAN.
- MECHANICAL CONTRACTOR SHALL BALANCE HVAC SYSTEM AS SHOWN ON THIS PLAN & IN SCHEDULES ON SHEET M3.I. IF AIRFLOWS DIFFER BY MORE THAN 5%, CONTACT CFA CONSTRUCTION MANAGER. TEST AND BALANCE REPORT SHALL BE DONE PRIOR TO STORE TURNOVER AND SUBMITTED TO CFA'S CONSTRUCTION MANAGER.

NEW AIR CURTAIN, AD#1 MOUNTED IN CEILING GRID, CENTERED ON THE DOOR, AT 4" OFF THE EXTERIOR WALL. MECHANICAL CONTRACTOR SHALL ADJUST AIR DEFLECTORS TOWARD AIR DIVERter BOX.

AIR CURTAIN REMOTE WALL SWITCHES BY MECHANICAL. REFER TO AIR DOOR SCHEDULE AND AIR CURTAIN WIRING DIAGRAM FOR FURTHER INFORMATION. COORDINATE EXACT LOCATION FOR SWITCHES WITH KITCHEN EQUIPMENT AND PLANS.

G.C. TO HIRE VENTILATION CLEANING CONTRACTOR CERTIFIED BY NATIONAL AIR DUCT CLEANERS ASSOCIATION (NADCA) TO CLEAN ALL EXISTING DUCTWORK THAT IS TO REMAIN.

**LEGEND**

A-12-400	TYPE - NECK SIZE - CFM
	SPIN-IN FITTING, MVD, NO SCOOP
	REMOTE TEMPERATURE SENSOR
	REMOTE HUMIDITY SENSOR
	SMOKE DETECTOR
	GREASE ACCESS DOOR TYPE
	DIRECTION OF THROW
	KEY NOTE REFERENCE
	EXISTING START COLLAR
	EXISTING RUNNOUT TO REMAIN
	EXISTING RETURN/EXHAUST (TYP.)
	EXISTING SUPPLY DIFFUSER (TYP.)
	NEW RETURN/EXHAUST, UNO. (TYP.)
	NEW SUPPLY DIFFUSER, UNO. (TYP.)
	NEW DUCT (TYP.)
	SMOKE DETECTOR TEST/RESET STATION

HOLD DUCT AT ALL AC UNITS AS HIGH AS POSSIBLE DUE TO LIMITED CLEARANCE ABOVE CEILING.

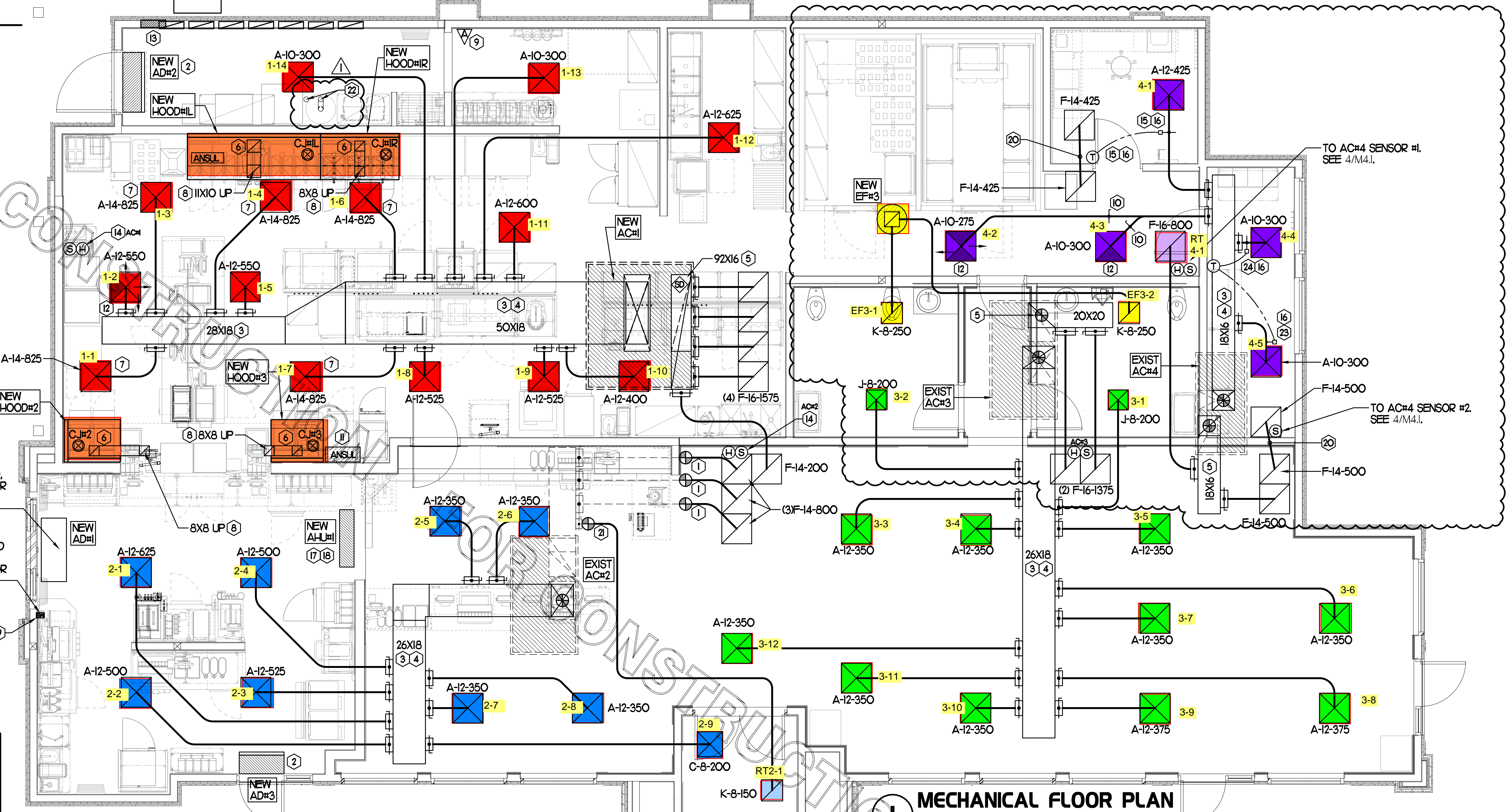
EXISTING CONDITIONS SHOWN ARE FROM PREVIOUS DRAWINGS. MECHANICAL CONTRACTOR SHALL FIELD VERIFY EXACT LOCATIONS OF ALL DUCT AND DIFFUSERS. IF MAJOR DIFFERENCES OCCUR IN FIELD, CONTACT CHICK-FIL-A CONSTRUCTION MANAGER.

**H.E.S. SYSTEM**

MECHANICAL CONTRACTOR TO PROVIDE AND INSTALL SUNCOAST H.E.S. SYSTEM FOR ALL NEW HOODS. SEE HOOD FAN/EQUIPMENT INTERLOCK WIRING DIAGRAM ON SHEET M4.I FOR MORE INFORMATION.

**TOTAL AIR BALANCE SCHEDULE**

EQUIPMENT MARK	ACH1 (NEW)	ACH2 (EXIST)	ACH3 (EXIST)	ACH4 (EXIST)	EF#1 (NEW)	EF#2 (NEW)	EF#3 (EXIST)	TOTAL
SERVES	KITCHEN	SERVING/DRIVETHRU	MAIN DINING	BACK OF HOUSE	HOOD#1L HOOD#1R	HOOD#2 HOOD#3	REST-ROOMS	
SUPPLY AIR CFM	8,500	3,750	3,950	1,600				17,800
RETURN AIR CFM	6,500	2,550	2,750	1,300				13,300
OUTSIDE AIR CFM	2,000	1,200	1,200	300				+4,700
EXHAUST CFM					1,913	1,402	500	-3,815
PRESSURIZATION								+885
REMARKS	ADJUST AND VERIFY BALANCE OF ALL HVAC EQUIPMENT IS AS SHOWN IN ORDER TO MAINTAIN BUILDING AIR BALANCE.							



**MECHANICAL FLOOR PLAN**

SCALE: 1/4"=1'-0"

**KEY NOTES (THIS SHEET ONLY)**

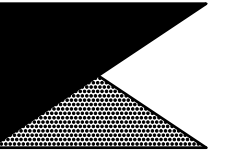
- CONNECT NEW AIR DEVICE TO EXISTING TAKE-OFF. IF NECESSARY, MECHANICAL CONTRACTOR SHALL PROVIDE AND INSTALL NEW DUCT IN ORDER TO MAKE CONNECTION TO AIR DEVICE IN NEW LOCATION. ANY FLEX DUCT USED SHALL NOT BE LONGER THAN 4'-0". SEE DETAIL 1/M3.I. COORDINATE AIR DEVICE LOCATIONS WITH ARCHITECTURAL REFLECTED CEILING PLAN.
- AIR CURTAIN MOUNTED OVER DOOR HEADER AT 7'-2" AFF TO BOTTOM OF UNIT. PROVIDE BLOCKING IN WALL BEHIND AIR CURTAIN. USE FACTORY PRE-PUNCHED MOUNTING HOLES ON BACK SIDE OF AIR CURTAIN ONLY. ATTACH AIR CURTAIN TO WALL USING 3/8" LAG BOLTS, LENGTH AS REQUIRED TO FULLY PENETRATE BLOCKING. LOCATE MAGNETIC CONTACT TYPE MICROSWITCH IN DOOR FRAME ON STRIKE SIDE.
- BRANCH TAKE-OFFS SHALL NOT BE LOCATED CLOSER THAN 3'-0" FROM ANY ELBOW OR TRANSITION INCLUDING THE SUPPLY AIR DROP FROM CURB.
- TRANSITION IN VERTICAL DROP FROM FULL SIZE OF CURB OPENING TO SIZE SHOWN. TRANSITION WITHIN CURB WHERE REQUIRED TO AVOID STRUCTURE. PROVIDE TURNING VANES IN ELBOWS, INCLUDING THE SUPPLY AIR DROP FROM UNIT.
- TRANSITION IN VERTICAL DROP FROM FULL SIZE OF CURB OPENING TO SIZE SHOWN. TRANSITION WITHIN CURB WHERE REQUIRED TO AVOID STRUCTURE. NO TURNING VANES IN ELBOW.
- HALTON MBD DAMPER AT HOOD COLLAR BY MECHANICAL CONTRACTOR. REFER TO SHEET M2.I AND M.H.I FOR FURTHER INFORMATION.
- MECHANICAL CONTRACTOR TO ADJUST PATTERN DEFLECTORS TO THROW STRAIGHT DOWN.
- GREASE DUCT UP THRU ROOF FROM FULL SIZE OF MBD COLLAR. OFFSETS THRU ROOF NOT TO BE GREATER THAN 45 DEGREES. SEE SHEET M1.2 FOR CONTINUATION.
- REPLACE EXISTING SMOKE DETECTOR TEST/RESET STATION FOR ALL NEW A/C UNITS. CONTACT SUNCOAST ENVIRONMENTAL CONTROLS AT 1-877-544-6679 TO PURCHASE A NEW SMOKE DETECTOR TEST/RESET STATIONS FOR EACH NEW RTU.
- RUSKIN MODEL MDR525 OR EQUIVALENT MANUAL VOLUME DAMPER WITH LOCKING QUADRANT HANDLE.
- ANSUL UTILITY CABINET. LOCATE TOP OF CABINET 0'-2" BELOW CEILING. COORDINATE FINAL MOUNTING LOCATION WITH KITCHEN EQUIPMENT.
- MECHANICAL CONTRACTOR TO CLOSE THE AIR PATTERN DEFLECTORS ON THE SHADED SIDE.
- ELECTRICAL CONTRACTOR TO PURCHASE AND INSTALL NEW CFA T500 TEMP CONTROL PANEL WITH AUTOMATIC TIMER FOR LIGHTING CONTROLS AND 6-THERMOSTAT TEMP CONTROL CABINET. COORDINATE WITH ELECTRICAL CONTRACTOR FOR NEW LOCATION OF TEMP CONTROL CABINET. CONTROL WIRING TERMINATIONS BETWEEN NEW THERMOSTATS, NEW SENSORS, AND NEW/EXISTING RTUS BY MECHANICAL CONTRACTOR. REFER TO WIRING DIAGRAM ON SHEET M4.I.
- MOUNT NEW REMOTE TEMP SENSOR AND NEW LENNOX HUMIDITY SENSOR FOR ROOFTOP UNIT AS NOTED BELOW (OR ABOVE WAINSCOTING IF APPLICABLE). ROUTE NEW WIRING FOR NEW REMOTE TEMP SENSOR TO NEW T'STAT IN CFA T500 PANEL. ROUTE NEW WIRING FOR NEW LENNOX HUMIDITY SENSOR TO UNIT ON ROOF. REFER TO WIRING DIAGRAM ON SHEET M4.I.
  - ACH1: MOUNT NEW REMOTE TEMP SENSOR ON WALL AT 5'-8" AFF. COORDINATE FINAL MOUNTING LOCATION IN FIELD WITH KITCHEN EQUIPMENT, SHELVING, AND ELECTRICAL. MOUNT NEW LENNOX HUMIDITY SENSOR DIRECTLY ABOVE REMOTE TEMP SENSOR.
  - ACH2, ACH3, & ACH4: MOUNT NEW REMOTE TEMP SENSOR ON WALL AT 5'-0" AFF. MOUNT NEW LENNOX HUMIDITY SENSOR DIRECTLY ABOVE REMOTE TEMP SENSOR.

- YOUNG REGULATOR 12" MODEL 4075-IF ROUND ZONE DAMPER WITH MODEL T-720-IF AUTOMATIC CHANGE-OVER THERMOSTAT. MOUNT T'STAT AT 4'-0" AFF. POWER OPEN/CLOSE/MODULATING. ADJUST MECHANICAL LIMIT FOR 50 CFM MINIMUM AIRFLOW. ADJUST MAXIMUM LIMIT TO FULLY OPEN POSITION. INITIAL BALANCE TO BE DONE WITH VAV AT THE FULL OPEN POSITION. CHICK-FIL-A HAS A NATIONAL ACCOUNT WITH TOM BARRROW COMPANY FOR THE ZONE DAMPER. THE MECHANICAL CONTRACTOR SHALL PURCHASE THE ZONE DAMPER DIRECTLY FROM TOM BARRROW COMPANY. CONTACT MR. SCOTT GEORGE AT 404-351-1010, FOR PRICING AND AVAILABILITY. ZONE DAMPERS NOT PURCHASED THRU TOM BARRROW COMPANY WILL NOT BE ACCEPTED.
- PROVIDE 120V/24V 50 VA TRANSFORMER TO SERVE YOUNG REGULATOR ZONE DAMPER ACTUATOR AND THERMOSTAT. POWER TRANSFORMER FROM 120V POWER CIRCUIT THAT REMAINS LIVE 24/7. PROVIDE ALL NECESSARY WIRING AND COMPONENTS TO MAKE CONTROL AND POWER CONNECTIONS TO TRANSFORMER, ZONE DAMPER, AND THERMOSTAT PER MANUFACTURER'S IOM. SEE DETAIL ON SHEET M4.I FOR MORE INFORMATION.
- MOUNT AIR HANDLER ON OVERHEAD WALL ABOVE CASSED OPENING. MOUNT UNIT AT 12" ABOVE CASSED OPENING. ROUTE REFRIGERANT PIPING ABOVE CEILING AND UP THRU ROOF TO CONDENSING UNIT, CU#1. SEE SHEET M1.2 FOR CONDENSING UNIT LOCATION. REFRIGERANT PIPING BELOW ROOF SHALL BE HIDDEN WITHIN WALLS AND CEILINGS.
- ROUTE CONDENSATE ABOVE CEILING FROM AH#1 AND DOWN IN WALL CAVITY TO EXIT POINT 12" ABOVE FLOOR DRAIN TO TERMINATE INTO FLOOR DRAIN LOCATED BEHIND ICE MAKER IN DRIVE THRU WITH CODE APPROVED AIR GAP. COORDINATE EXACT LOCATION OF DRAIN WITH PLUMBING PLANS. CONDENSATE PIPING SHALL BE TYPE K COPPER WITH 1/2" ARMAFLEX INSULATION. CONDENSATE MUST SLOPE MIN. 1/8" PER FOOT TO TERMINATION POINT. CONTRACTOR SHALL INSTALL A CONDENSATE LIFT PUMP IN ORDER TO ROUTE CONDENSATE ABOVE CEILING.
- MOUNT AH#1 THERMOSTAT ON WALL NEXT TO AD#1 REMOTE WALL SWITCHES. SEE SCHEDULE ON SHEET M3.I FOR INTERLOCK WITH T500 PANEL.
- TRANSFER AIR DUCT. NO BALANCING DAMPERS AT GRILLES.
- PROVIDE & INSTALL NEW SPIN-IN COLLAR AND ROUTE NEW DUCT TO NEW GRILLE AS SHOWN.
- 3" SCH. 40 PVC EXHAUST/INTAKE PIPING. SEE SHEET M1.2 FOR TERMINATION POINTS. CONTRACTOR TO INSTALL PER MANUFACTURER GUIDELINES AND RECOMMENDATIONS.
- YOUNG REGULATOR 10" MODEL 4075-IF ROUND ZONE DAMPER WITH MODEL T-720-IF AUTOMATIC CHANGE-OVER THERMOSTAT. MOUNT T'STAT AT 4'-0" AFF. POWER OPEN/CLOSE/MODULATING. ADJUST MECHANICAL LIMIT FOR 50 CFM MINIMUM AIRFLOW. ADJUST MAXIMUM LIMIT TO FULLY OPEN POSITION. INITIAL BALANCE TO BE DONE WITH VAV AT THE FULL OPEN POSITION. CHICK-FIL-A HAS A NATIONAL ACCOUNT WITH TOM BARRROW COMPANY FOR THE ZONE DAMPER. THE MECHANICAL CONTRACTOR SHALL PURCHASE THE ZONE DAMPER DIRECTLY FROM TOM BARRROW COMPANY. CONTACT MR. SCOTT GEORGE AT 404-351-1010, FOR PRICING AND AVAILABILITY. ZONE DAMPERS NOT PURCHASED THRU TOM BARRROW COMPANY WILL NOT BE ACCEPTED.
- YOUNG REGULATOR 10" MODEL 4075-LMB24 ROUND ZONE DAMPER. POWER OPEN/CLOSE/MODULATING. ADJUST MECHANICAL LIMIT FOR 50 CFM MINIMUM AIRFLOW. ADJUST MAXIMUM LIMIT TO FULLY OPEN POSITION. INITIAL BALANCE TO BE DONE WITH VAV AT THE FULL OPEN POSITION. THIS IS A DRONE DAMPER FOR THE 4075-IF DAMPER. CHICK-FIL-A HAS A NATIONAL ACCOUNT WITH TOM BARRROW COMPANY FOR THE ZONE DAMPER. THE MECHANICAL CONTRACTOR SHALL PURCHASE THE ZONE DAMPER DIRECTLY FROM TOM BARRROW COMPANY. CONTACT MR. SCOTT GEORGE AT 404-351-1010, FOR PRICING AND AVAILABILITY. ZONE DAMPERS NOT PURCHASED THRU TOM BARRROW COMPANY WILL NOT BE ACCEPTED.



Chick-fil-A

Chick-fil-A  
5200 Buffington Road  
Atlanta, Georgia 30349



Kurzynske & Associates  
CONSULTING ENGINEERS  
2705 Lebanon Pike - Suite One  
Nashville, Tennessee 37214  
Telephone: (615) 255-5203

Kurzynske & Associates License  
No. F-0823, Expires 12/31/23



**CHICK-FIL-A**  
NORTHLAKE PARKWAY  
8411 NORTHLAKE COMMONS BLVD  
CHARLOTTE, NC 28216-2268

**FSR#01890**

BUILDING TYPE / SIZE: S03 A LRG  
RELEASE: 22.05

**REVISION SCHEDULE**

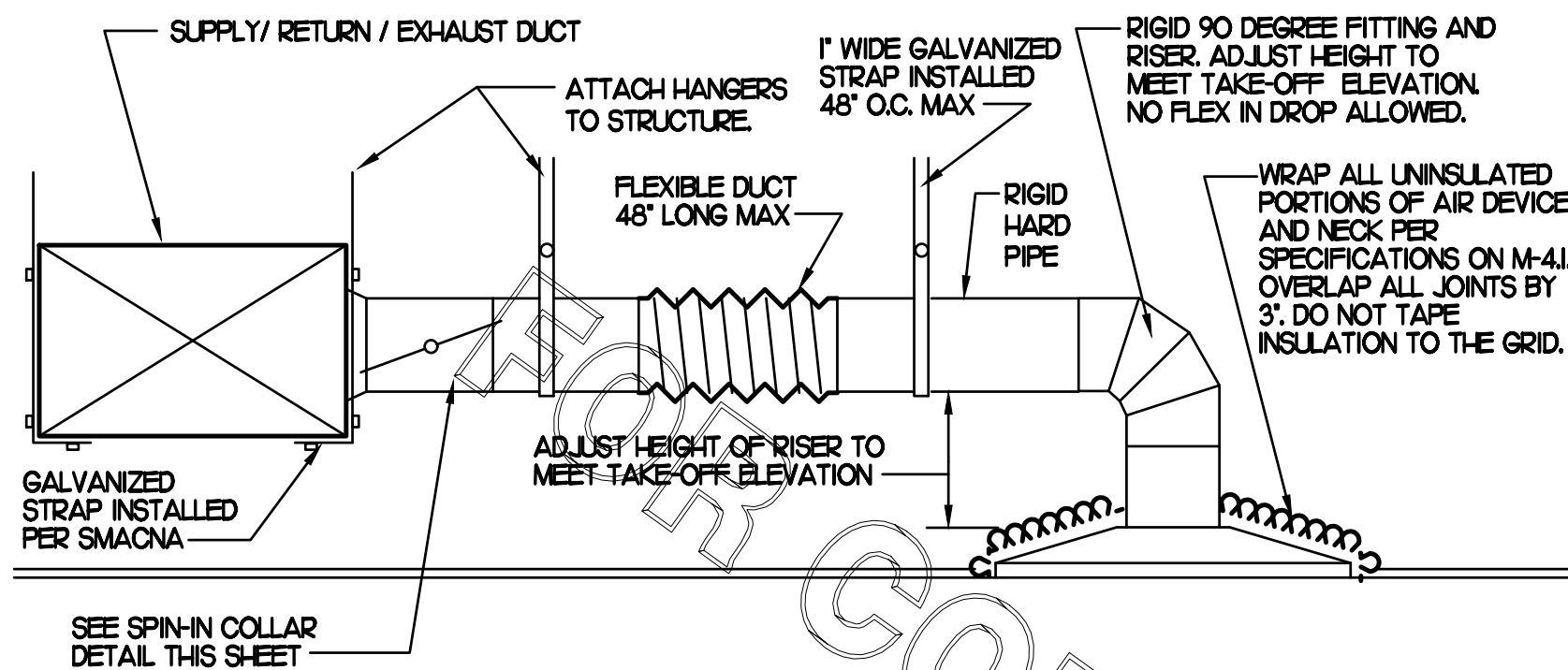
NO.	DATE	DESCRIPTION
1	05/10/23	Plan Review Comments
2	07/07/23	Site and Building Modification

CONSULTANT PROJECT # 23047.HF.R  
PRINTED FOR CONSTRUCTION  
DATE 04/14/2023  
DRAWN BY AK

Information contained on this drawing and in all digital files produced for above named project may not be reproduced in any manner without express written or verbal consent from authorized project representatives.  
PROJECT MECHANICAL FLOOR PLAN  
SHEET NUMBER

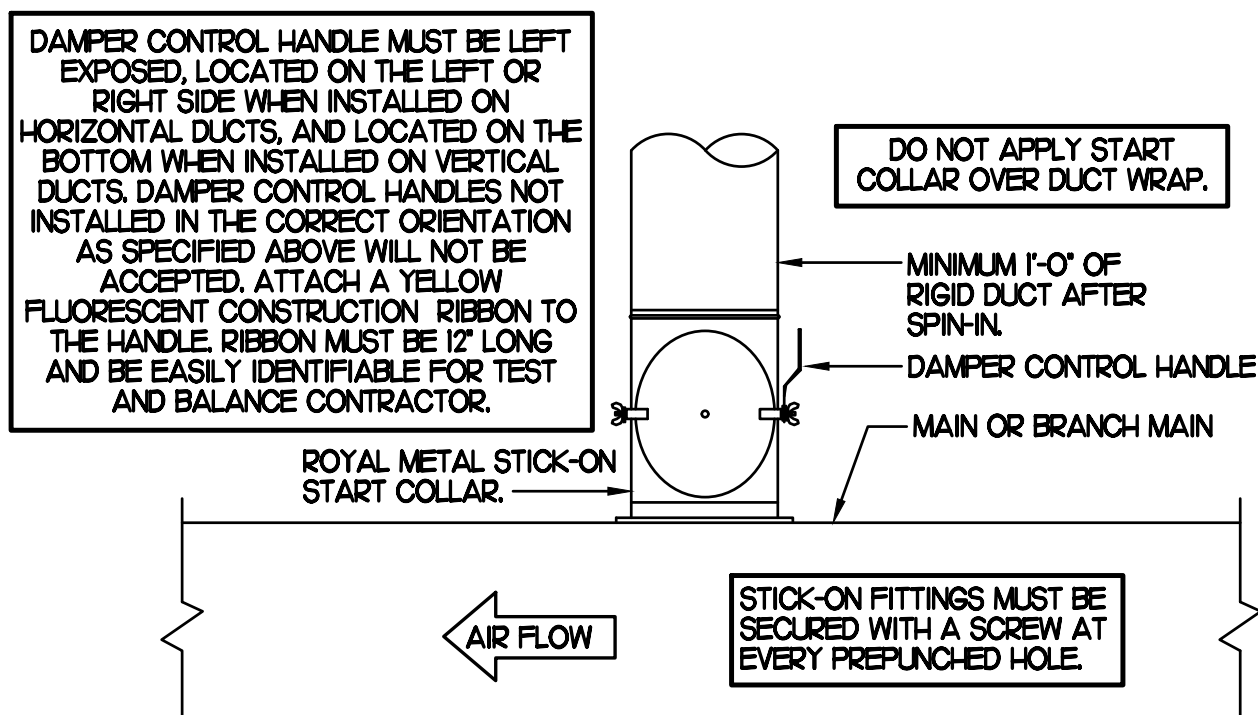
**M1.1**

CONSTRUCTION

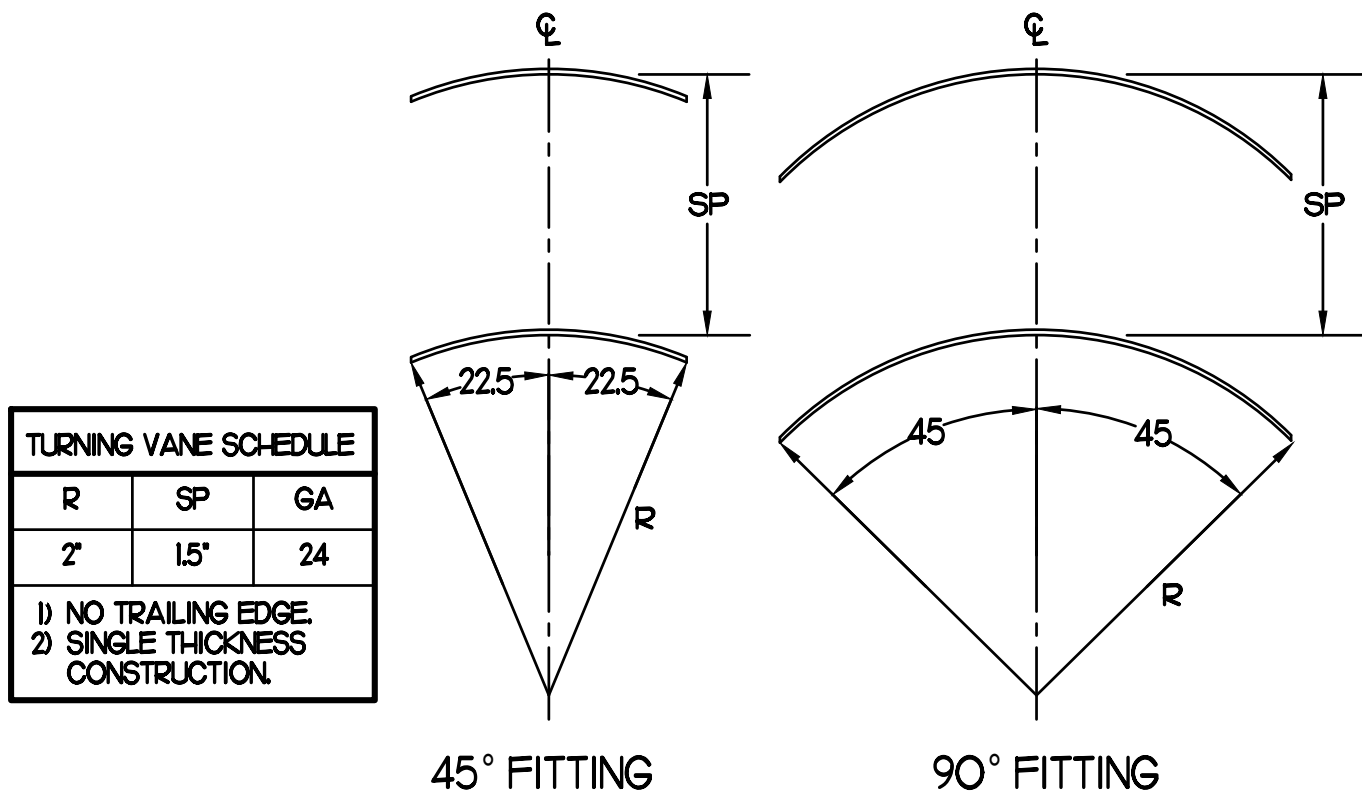


**1 SAG/RAG/GRILLE TAKE-OFF**  
NO SCALE

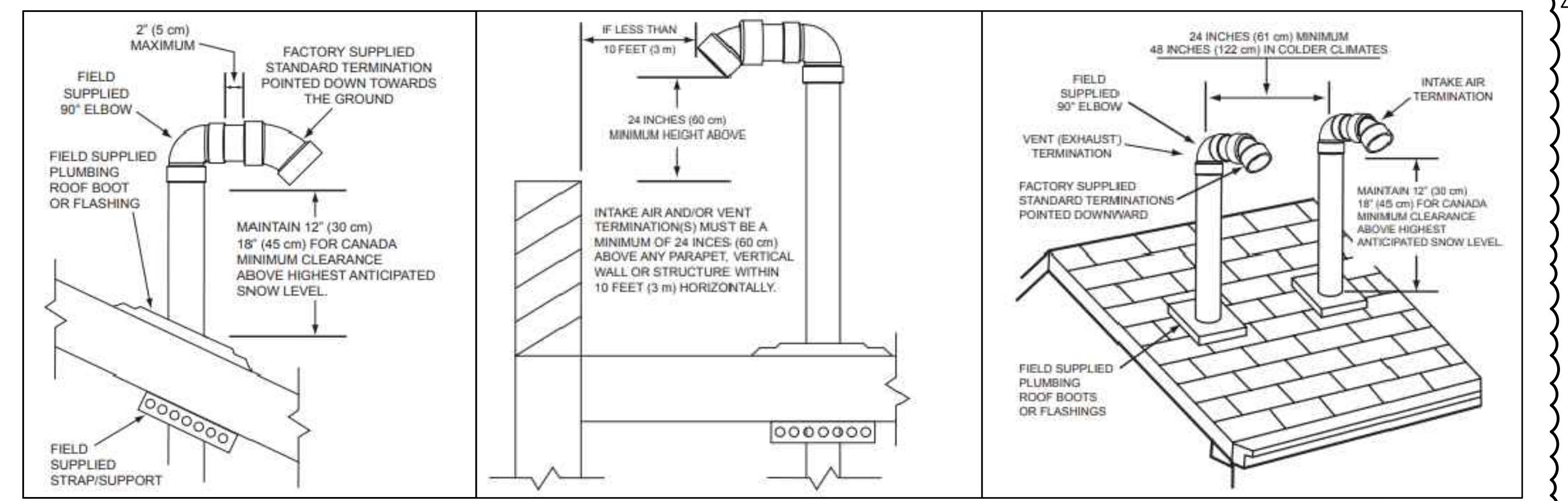
CHICK-FIL-A HAS A NATIONAL ACCOUNT WITH TOM BARRROW COMPANY FOR THE ROYAL METAL START COLLARS. THE MECHANICAL CONTRACTOR IS REQUIRED TO PURCHASE THE ROYAL METAL START COLLARS DIRECTLY FROM TOM BARRROW COMPANY. CONTACT MR. SCOTT GEORGE AT 404-351-0100 FOR PRICING AND AVAILABILITY. ROYAL METAL START COLLARS NOT PURCHASED THRU TOM BARRROW COMPANY WILL NOT BE ACCEPTED.



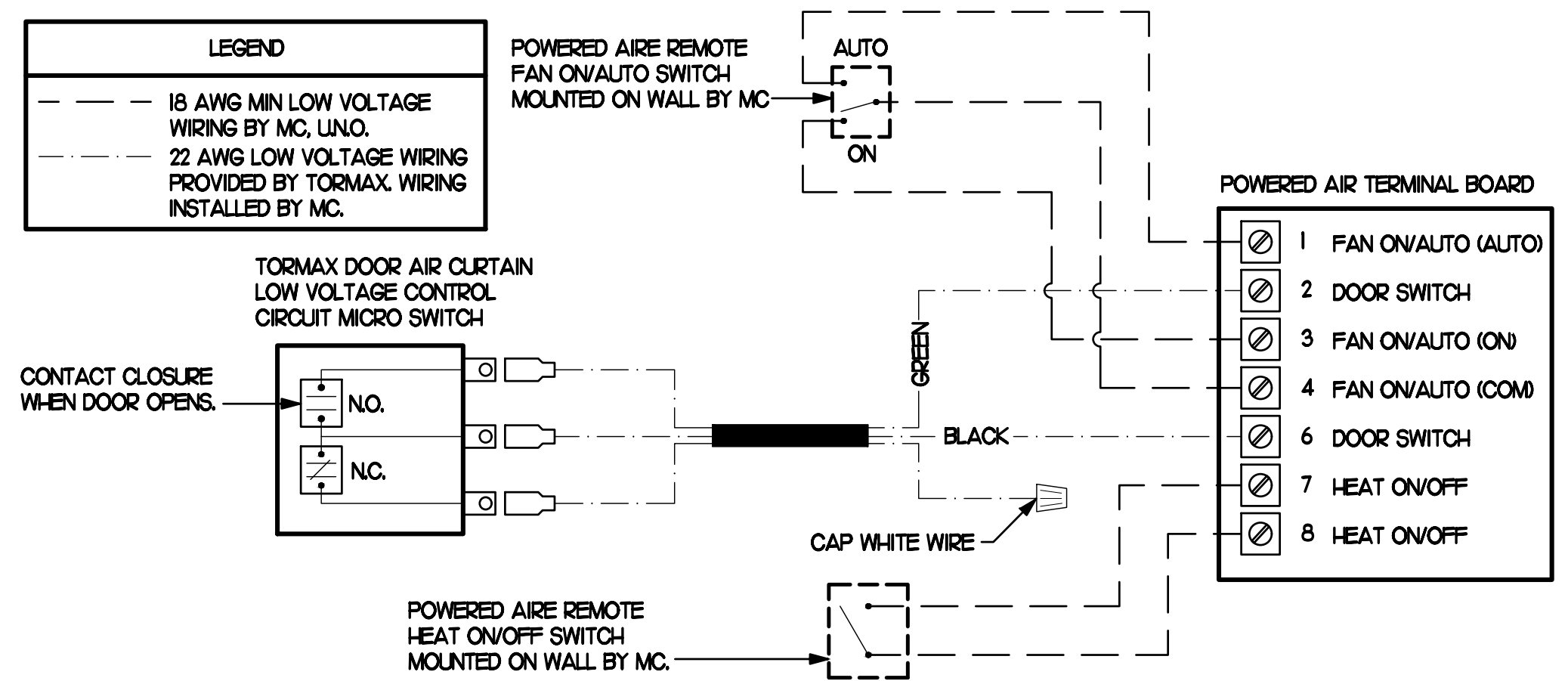
**2 START COLLAR**  
NO SCALE



**3 TURNING VANES**  
NO SCALE



**6 WATER HEATER INTAKE/EXHAUST INSTALLATION DETAILS**  
NO SCALE



**4 AIR CURTAIN WIRING DIAGRAM**  
NO SCALE

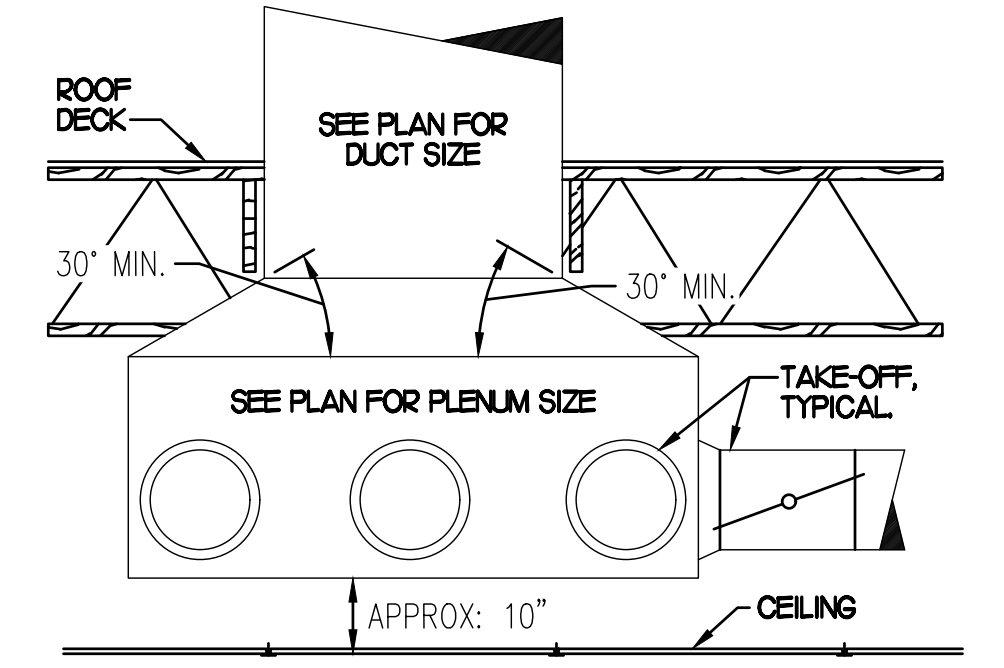
**AIR DEVICE SCHEDULE**

MARK	DESCRIPTION	LOCATION	NECK SIZE	FACE SIZE	FRAME TYPE	REMARKS
A	PRICE MODEL APDC ALUMINUM SUPPLY AIR DIFFUSER WITH INDIVIDUALLY ADJUSTABLE CURVED AIR PATTERN CONTROLLERS.	DINING AREA KITCHEN	SEE PLAN	24X24	LAY-IN	I7
C	PRICE MODEL SMCD STEEL SUPPLY AIR DIFFUSER FIELD ADJUSTABLE AIR PATTERN CONTROLLERS.	ENTRIES	14X4	20X20	BEVELLED	I3,5,6
F	PRICE MODEL 80 EGGCRATE RETURN AIR GRILLE WITH REMOVABLE WHITE CORE, FACTORY FLAT BLACK BACKPAN AND ROUND NECK.	DINING KITCHEN	SEE PLAN	24X24	LAY-IN	I7
J	PRICE MODEL SMCD STEEL SUPPLY AIR DIFFUSER FIELD ADJUSTABLE AIR PATTERN CONTROLLERS.	RESTROOMS	10X10	16X16	BEVELLED	I2,3,5,6
K	PRICE MODEL APDDR ALUMINUM PERFORATED FACE RETURN AIR GRILLE.	RESTROOMS ENTRIES	14X4	17X17	SURFACE	I4,5,6

NOTES: MECHANICAL CONTRACTOR SHALL PURCHASE THE AIR DEVICES DIRECTLY FROM TOM BARRROW COMPANY. CONTACT MR. SCOTT GEORGE AT 404-351-0100, FOR PRICING AND AVAILABILITY. AIR DEVICES NOT PURCHASED THRU TOM BARRROW COMPANY WILL NOT BE ACCEPTED.

REMARKS: 1. STANDARD OFF WHITE FINISH. 2. PROVIDE MODEL VCS3 NECK DAMPER. 3. SEE DRAWING M11 FOR THROW. 4. PROVIDE MODEL VCR7 NECK DAMPER ON GRILLES IN RESTROOMS. 5. PROVIDE BACKPAN MC TO SEAL JOINTS WITH MASTIC AND INSULATE EXTERNALLY. 6. FIELD INSULATE BACKPAN AS SHOWN IN DETAIL I1M31. 7. FACTORY INSULATED R-6 BACKPAN.

**5 RETURN DROP GEOMETRY**  
NO SCALE



**AIR DOOR SCHEDULE**

MARK	CFM	VELOCITY	HEATING CAP	HP	AREA SERVED	MODEL	MANUFACTURER	REMARKS
ADH1 (NEW)	1543	2338	10 KW	3/4	DRIVE THRU	CHA-I-48E9	POWERED-AIRE	2-5
ADH2 (NEW)	3,867	4,220	NA	3/4	SERVICE DOOR	RBT-I-48	POWERED-AIRE	I
ADH3 (NEW)	2,899	4,220	NA	3/4	DRIVE THRU DOOR	RBT-I-36	POWERED-AIRE	I

NOTES: CHICK-FIL-A HAS A NATIONAL ACCOUNT WITH TOM BARRROW COMPANY FOR THE AIR DOORS. THE MECHANICAL CONTRACTOR SHALL PURCHASE THE AIR DOORS DIRECTLY FROM TOM BARRROW COMPANY. CONTACT MR. SCOTT GEORGE AT 404-351-0100, FOR PRICING AND AVAILABILITY. AIR DOORS NOT PURCHASED THRU TOM BARRROW COMPANY WILL NOT BE ACCEPTED.

REMARKS: 1. FACTORY PROVIDED MAGNETIC DOOR CONTACT WITH FACTORY INSTALLED LOW VOLTAGE CONTROLS LOCATED IN AIR DOOR CABINET. 2. FACTORY PROVIDED, WIRED, AND UNIT MOUNTED SPEED CONTROLLER LOCATED ABOVE CEILING. 3. FACTORY WIRED DISCONNECT. 4. FACTORY PROVIDED, FIELD INSTALLED REMOTE WALL SWITCHES FOR HEATING ON/OFF AND FAN ON/AUTO SWITCH. SEE AIR CURTAIN WIRING DIAGRAM DETAIL THIS SHEET. 5. PROVIDE WITH DIVERTER BOX FROM TOM BARRROW COMPANY. PROVIDE WITH MOUNTING BRACKETS PER MANUFACTURER'S RECOMMENDATIONS. INSTALL PER MANUFACTURER'S MOUNTING INSTRUCTIONS.

**EXHAUST FAN SCHEDULE**

MARK	CFM	ESP	RPM	TIP SPEED (FPM)	HP (WATTS)	AREA SERVED	MODEL	MANUFACTURER	REMARKS
EF#1 (NEW)	1,913	0.75	1,331	5,226	3/4	HOOD#1 & HOOD#2	150 OPS	LOREN COOK	H2
EF#2 (NEW)	1,402	0.95	1,999	4,708	3/4	HOOD#2 & HOOD#3	150 OPS	LOREN COOK	H2
EF#3 (NEW)	500	0.375	1,388	3,679	1/8	RESTROOMS	ACED 100C5D4	LOREN COOK	2,3,13-16

NOTES: GREASE EXHAUST FAN RPM BASED ON 80 DEGREE F AIR AT 1000 FEET ABOVE SEA LEVEL. GREASE EXHAUST FANS TO BE UL 762 LISTED. CHICK-FIL-A HAS A NATIONAL ACCOUNT WITH TOM BARRROW COMPANY FOR FAN/CLUB PACKAGE. MECHANICAL CONTRACTOR IS REQUIRED TO PURCHASE THE FAN/CLUB PACKAGE DIRECTLY FROM TOM BARRROW COMPANY. CONTACT MR. SCOTT GEORGE AT 404-351-0100 FOR PRICING AND AVAILABILITY. FANS AND CLUBS NOT PURCHASED THRU TOM BARRROW COMPANY WILL NOT BE ACCEPTED.

REMARKS: 1. PROVIDE AND INSTALL ROOFTOP SOLUTIONS G2 DRIP GUARD, MC. TO CONTACT ROOFTOP SOLUTIONS AT 800-913-7034. 2. PROVIDE FACTORY INSTALLED, PRE-WIRED, NEMA 3 NON-FUSED DISCONNECT. COORDINATE WITH E.C. INTEGRAL THERMAL OVERLOAD WITH AUTOMATIC RESET. 3. INTEGRAL THERMAL OVERLOAD WITH AUTOMATIC RESET. 4. UPBLAST, ARRANGEMENT 10, CCW ROTATION. SEE PLANS TO CONFIRM CONFIGURATION. 5. PROVIDE FACTORY STEEL FAN WHEEL. 6. PROVIDE FACTORY STEEL INLET FLANGE AND INLET COMPANION FLANGE. 7. PROVIDE FACTORY WEATHER HOUSING W/ HINGED ACCESS DOOR. 8. PROVIDE FACTORY DRAIN CONNECTION. 9. PROVIDE FACTORY BOLTED ACCESS DOOR ON SCROLL. 10. PROVIDE FACTORY STEEL OUTLET COMPANION FLANGE. 11. UTILITY SET FAN CLUB AND ASSOCIATED EXHAUST DUCT CLUB PROVIDED BY TOM BARRROW COMPANY. 12. PROVIDE FACTORY BELT DRIVE WITH ADJUSTABLE MOTOR SKEAVE AND SPARE BELT. 13. STARTER BIRDSCREEN. 14. STARTER BY ELECTRICAL CONTRACTOR. INTERLOCK WITH LIGHTS BY ELECTRICAL CONTRACTOR. 15. PROVIDE FACTORY INSTALLED AND WIRED SPEED CONTROLLER. 16. BACKDRAFT DAMPER IN DUCT BY MECHANICAL CONTRACTOR AS SHOWN IN DETAIL THIS SHEET.

**GAS FIRED ROOFTOP UNIT SCHEDULE**

MARK	COOLING CAPACITY (MBH)		HEATING CAPACITY (MBH)		FAN SECTION (CFM)		MODEL	MANUFACTURER	REMARKS			
	TOTAL	SENS	INPUT	OUTPUT	STAGES	SUPPLY						
ACH1 (NEW)	266J	208.9	480.0	389.0	2	8,500	2000	75	0.8	LGT300S4M	LENNOX	H5
ACH2 (EXIST)	-	-	-	-	-	3,750	1200	-	-	-	-	EXISTING
ACH3 (EXIST)	-	-	-	-	-	3,950	1200	-	-	-	-	EXISTING
ACH4 (EXIST)	-	-	-	-	-	1,600	300	-	-	-	-	EXISTING

NOTES: COOLING CAPACITIES ARE GROSS, BASED ON INDOOR EDB 80F, INDOOR EWB 67F, OUTDOOR EDB 95F. FOR PROPER BUILDING AIR BALANCE, VERIFY AMOUNT OF OUTSIDE AIR PROVIDED BY ALL EXISTING UNITS. ADJUST AS PER SCHEDULE IF NECESSARY. VERIFY MIN. 10' DISTANCE OF O.A. INTAKE OPENINGS OF A/C UNITS FROM ANY EXISTING SOURCE OF AIR POLLUTION (EXHAUST FAN, COMBUSTION FLUE, VENT ETC). IF SUCH CONDITIONS EXIST, CONTRACTOR IS REQUIRED TO DUCT OUTSIDE AIR INTAKE ON ROOF AWAY FROM ANY SUCH SOURCE.

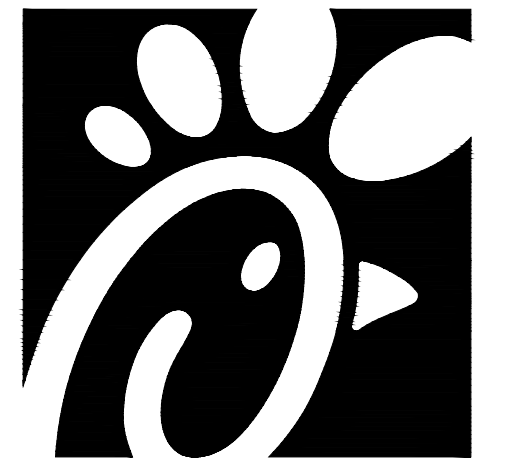
REMARKS: 1. PROVIDE DIFFERENTIAL ENTHALPHY ECONOMIZER WITH POWER EXHAUST. ECONOMIZER TO BE LOW LEAKAGE/HIGH PERFORMANCE. 2. SEE DETAIL 2/M41 FOR SETTING OF PRODIGY M3 BOARD CONTROL PARAMETERS BY MC. 3. PROVIDE 14" HIGH ROOF CURB. 4. PROVIDE FACTORY INSTALLED AND UNIT POWERED 115V GFI SERVICE OUTLET. 5. PROVIDE FACTORY INSTALLED RETURN SIDE SMOKE DETECTOR. 6. PROVIDE FACTORY INSTALLED NON-FUSED DISCONNECT. 7. PROVIDE 2" MERV 8 THROW AWAY FILTERS. 8. PROVIDE HINGED PANELS FOR FILTER ACCESS, FAN MOTOR ACCESS, COMPRESSOR ACCESS AND CONTROL COMPARTMENT ACCESS. 9. ADJUST GAS MANIFOLD PRESSURE AT LOCATIONS WHERE ELEVATION EXCEEDS 2000' ABOVE SEA LEVEL. AS RECOMMENDED BY MANUFACTURER. 10. PROVIDE FACTORY INSTALLED COIL HAIL GUARD. 11. PROVIDE HANGING OPTION WITH FACTORY WALL MOUNTED HUMIDITY SENSOR. 12. PROVIDE WITH FACTORY CONDENSATE DRAIN PAN OVERFLOW SWITCH. 13. PROVIDE WITH MSAV BLOWER. 14. PROVIDE FACTORY CONFIGURED PHASE LOSS PROTECTION. 15. PROVIDE HIGH FALLT SCOR (100K).

**DUCTLESS SPLIT SYSTEM HEAT PUMP UNIT SCHEDULE**

MARK	COOLING CAPACITY (MBH)		HEATING CAPACITY (MBH)		EFFICIENCIES	FAN SECTION (CFM)		ELECTRICAL DATA		R-410A MODEL	MFR		
	MIN	MAX	MIN	MAX		SEER	HSPF	AIR FLOW (MET)	NCA			MOCP	AHU
AHUM101 (NEW)	18.0	33.5	18.0	40.0	16.2	10.0	635-730-830	28	140	208V/160	PKA-A36KA7	PLZ-HA36HA45	MITSUBISHI

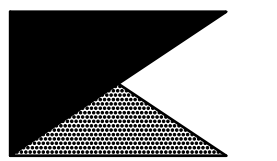
NOTES: MECHANICAL CONTRACTOR SHALL PURCHASE THE SPLIT SYSTEM HEAT PUMP DIRECTLY FROM TRANE/MITSUBISHI. CONTACT MS. LAURI FRANKOWSKI AT 630-400-4285, FOR PRICING AND AVAILABILITY.

REMARKS: 1. ELECTRICIAN TO PROVIDE NON-FUSED DISCONNECT. 2. MECHANICAL TO PROVIDE AND INSTALL REFRIGERANT PIPING AS PER MFR RECOMMENDATIONS. 3. PROVIDE ENGRAVED PLASTIC LABEL AT AHU AND CU WITH 1" HIGH WHITE LETTERS ON A BLACK BACKGROUND RIVETED TO UNIT CABINET. 4. PROVIDE WITH ADEQUATE REFRIGERANT LINE SET. FIELD VERIFY DISTANCE FROM WHERE CONDENSER IS TO BE SET TO AIR HANDLER LOCATION PRIOR TO ORDERING. 5. PROVIDE WITH WALL MOUNTED THERMOSTAT (TAR-CT01AM1-SB). USE TWO-WIRE, STANDARD, NON-POLAR CONTROL WIRE TO CONNECTOR TB5 ON INDOOR UNIT CONTROLLER. PROGRAM THERMOSTAT CONTROLS TO MATCH DRIVE-THRU RTU SETPOINTS. 6. PROVIDE PAC-SE56RA-E CONNECTOR AT INDOOR UNIT (CONNECTOR CN3), WIRE ORANGE AND RED WIRES TO SPARE POLE ON RELAY R-1 IN SLNCOAST T-500 PANEL (TERMINALS 11 AND 7 RESPECTIVELY) AND CAP THE BROWN WIRE. 7. PROVIDE WITH CONDENSATE PUMP (BLUE DIAMOND MAX) BLUE MODEL# X87-721).



Chick-fil-A

Chick-fil-A  
5200 Buffington Road  
Atlanta, Georgia 30349



Kurzynske & Associates  
CONSULTING ENGINEERS  
2705 Lebanon Pike - Suite One  
Nashville, Tennessee 37214  
Telephone: (615) 255-5203

Kurzynske & Associates License  
No. F-0823, Expires 12/31/23



**CHICK-FIL-A**  
NORTHLAKE PARKWAY  
8411 NORTHLAKE COMMONS BLVD  
CHARLOTTE, NC 28216-2268

**FSR#01890**

BUILDING TYPE / SIZE: S03 A LRG  
RELEASE: 22.05

REVISION SCHEDULE

NO.	DATE	DESCRIPTION
1	05/10/23	Plan Review Comments
2	07/07/23	Site and Building Modification

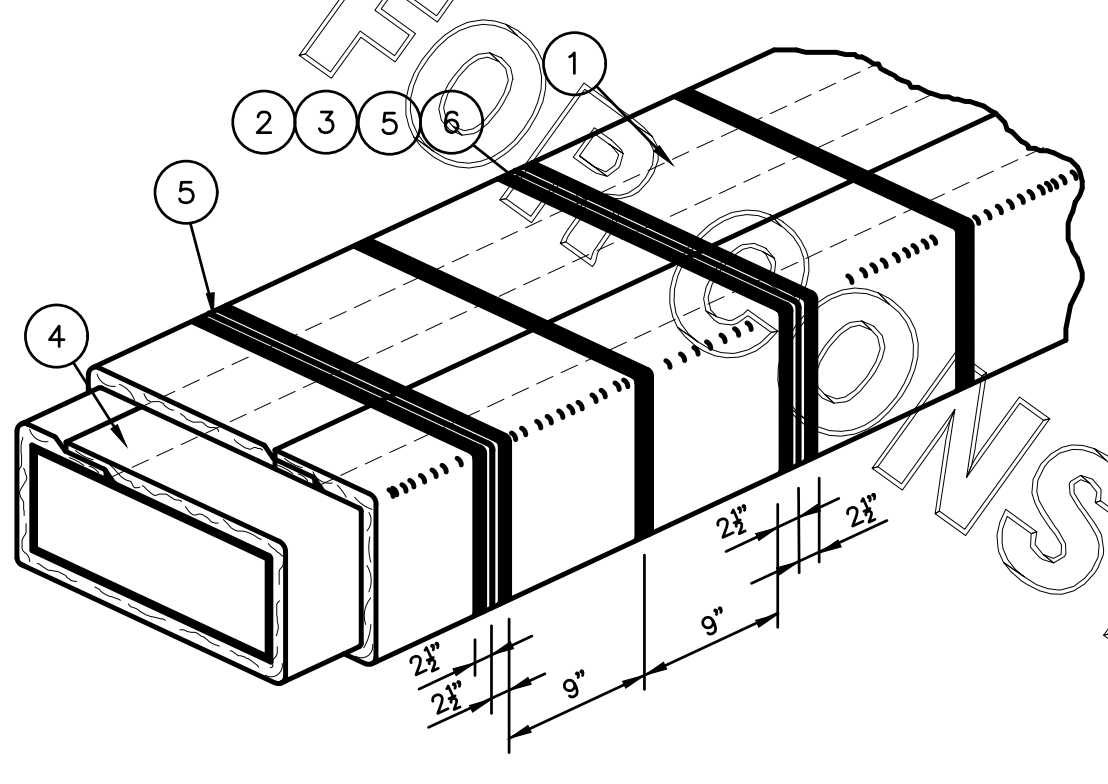
CONSULTANT PROJECT # 23047.HF.R  
PRINTED FOR CONSTRUCTION  
DATE 04/14/2023  
DRAWN BY AK

Information contained on this drawing and in all digital files produced for above named project may not be reproduced in any manner without express written or verbal consent from authorized project representatives.  
SHEET  
MECH DETAILS & SCHEDULES  
SHEET NUMBER

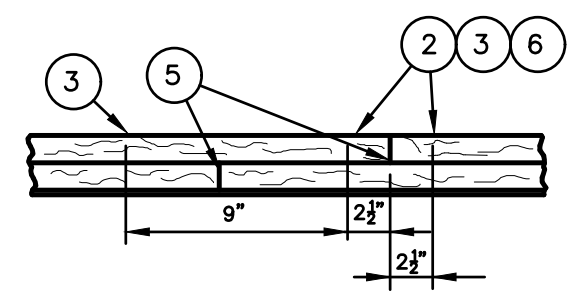
**M3.1**

CONSTRUCTION

FyreWrap® Elite™ 1.5 Duct Insulation  
 Commercial Kitchen Grease Duct System  
 ASTM E 2336/ICCES AC101 System  
 1 and 2 Hour Fire-Rated Enclosure, Shaft Alternative  
 Zero Clearance to Combustibles  
 Intertek Design No. UNI/BI 120-02  
 Butt Joint System (Both Layers, Max. 24"x24" Duct)



INSTALLATION METHOD:



LEGEND:

- 1 FyreWrap Elite 1.5 Duct Insulation, Two Layers (Each 1/2" Total Thickness - 3')
- 2 Filament Tape (Temporary Hold)
- 3 1/2" Carbon or SS Banding Straps (Permanent Hold)
- 4 3" Minimum Longitudinal Overlap
- 5 3" Compressed Butt Joint
- 6 3" Wide Aluminum Poly Tape at 90 Degree Transverse Butt Joints

Revisions

Revision	Comments

SUBJECT: \_\_\_\_\_

LOCATION: \_\_\_\_\_

BLDG. NO.: \_\_\_\_\_ DATE: 04-05-2018 DRAWING NO. FP-693

DRAWN: S.A.RUSTAY APPROVAL: \_\_\_\_\_ PROJECT NO. \_\_\_\_\_

SCALE: N.T.S.

KITCHEN HOOD SYSTEMS NOTES

1. CHICK-FIL-A MAINTAINS A NATIONAL ACCOUNT WITH HALTON CO. FOR THE HOODS. CHICK-FIL-A WILL PURCHASE AND PROVIDE THE HOODS FOR INSTALLATION BY THE MECHANICAL CONTRACTOR. THE MECHANICAL CONTRACTOR SHALL BE RESPONSIBLE FOR RECEIVING THE HOODS. CONTACT HALTON CO. AT 270-237-5600 FOR MORE INFO.
2. THE FIRE SUPPRESSION SYSTEM SHALL CONSIST OF A COMPLETE WET ANSUL SYSTEM FURNISHED BY HALTON. THE HOOD SHALL BE FURNISHED PRE-PIPED BY HALTON.
3. THE R-102 ANSUL FIRE SUPPRESSION SYSTEM EXTERNAL TO THE HOODS SHALL BE INSTALLED IN ACCORDANCE WITH HOOD MANUFACTURER'S SHOP DRAWINGS BY AN AUTHORIZED ANSUL SYSTEM INSTALLER SELECTED AND HIRED BY HALTON. COST FOR ANSUL INSTALLATION INCLUDED IN PRICE OF HOODS TO CFA.
4. HOOD EXHAUST DUCTWORK SHALL BE 16 GA. BLACK STEEL WITH CONTINUOUS LIQUID TIGHT WELD OF JOINTS & SEAMS.
5. TURNS IN GREASE EXHAUST DUCTWORK SHALL BE LONG RADIUS TYPE, WITH A CENTERLINE RADIUS R=3W/2, NO EXCEPTIONS ALLOWED. NO MITERED FITTINGS ALLOWED.
6. ALL STAINLESS STEEL CLOSURE PANELS SHALL BE SUPPLIED BY HOOD MANUFACTURER AND INSTALLED BY THE MECHANICAL CONTRACTOR ACCORDING TO MANUFACTURER'S RECOMMENDATIONS.
7. SLOPE ALL GREASE EXHAUST DUCT BACK TO HOOD AT 1/4" PER FOOT OF RUN.
8. WRAP NEW GREASE DUCT WITH UNIFRAX FyreWRAP. INSULATION ON ACCESS DOORS SHALL BE INSTALLED ACCORDING TO MANUFACTURER'S INSTALLATION RECOMMENDATIONS. UNIFRAX FyreWRAP PRODUCT USED SHALL MEET LOCAL CODE REQUIREMENTS.
9. SUPPORT HOODS WITH THREADED ROD AT EACH FACTORY SUPPORT POINT. EACH SUPPORT POINT MUST SUPPORT THE HOOD WEIGHT EQUALLY. ATTACH TO STRUCTURE AS DETAILED ON STRUCTURAL DRAWINGS. ATTACH HOOD TO WALL AT 16" INTERVALS ALONG FULL LENGTH OF HOOD ON TOP AND BOTTOM. ATTACHMENT TO WALL REQUIRES FIELD DRILLING OF SUPPORT ANGLE AT BACK OF HOODS. EACH WALL ATTACHMENT POINT MUST OCCUR AT A WALL STUD. ATTACHMENT HARDWARE TO BE #12-24 HEX HEAD SHEET METAL SCREW EQUAL TO TEXTRON SDS EDT265, LENGTH AS REQUIRED TO FULLY PENETRATE THE STUD.
10. MECHANICAL CONTRACTOR TO PROVIDE AND INSTALL SUNCOAST H.E.S. SYSTEM FOR ALL HOODS. SEE HOOD FAN/EQUIPMENT INTERLOCK WIRING DIAGRAM ON SHEET M4.1 FOR MORE INFORMATION.

HOOD SCHEDULE

MARK	EXHAUST CFM	SP • TAB PORT	CAPTURE JET CFM & SP.	TYPE	COLLAR SIZE	WIDTH	DEPTH	HEIGHT	MANUFACTURER	MODEL	REMARKS
HOOD#HL	1204	013"	80 • 0.30"	BACK SHELF	10"X11"	107"	37"	38"	HALTON	KVL-2	I
HOOD#R	709	013"	47 • 0.30"	BACK SHELF	8"X8"	63"	37"	38"	HALTON	KVL-2	I
HOOD#2	701	0.30"	30 • 0.29"	BACK SHELF	8"X8"	45"	34"	38"	HALTON	KVL-C	I
HOOD#3	701	0.30"	30 • 0.29"	BACK SHELF	8"X8"	42"	34"	38"	HALTON	KVL-C	I

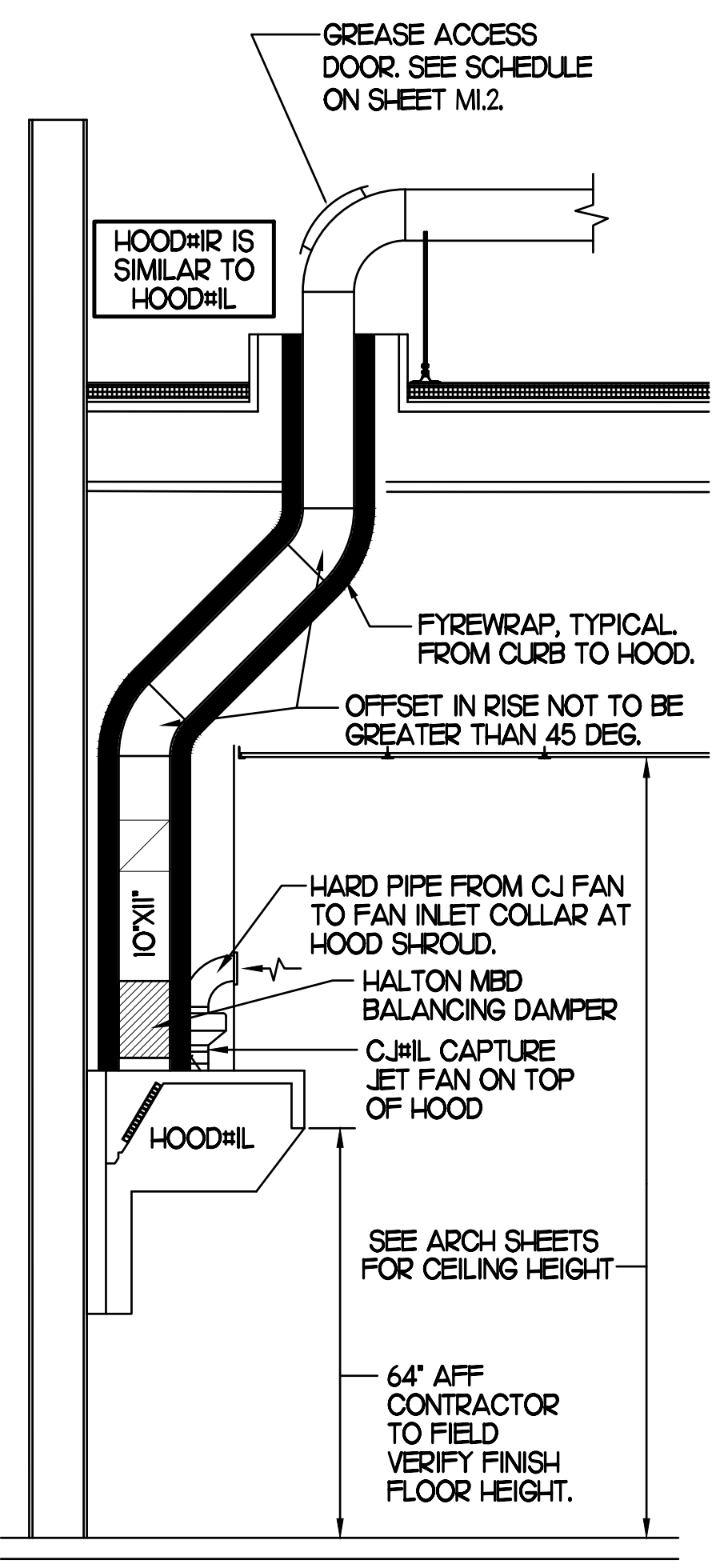
NOTES: DIMENSIONS OF HOODS INCLUDE BACK AND SIDE SPACERS (HEIGHT DOES NOT INCLUDE CLOSURE PANELS).

REMARKS: I. HOOD SHOP DRAWINGS ARE INCLUDED FOR REFERENCE ON SHEETS M.H.I.I. REFER TO SHOP DRAWINGS FOR HOOD OPTIONS AND CONSTRUCTION.

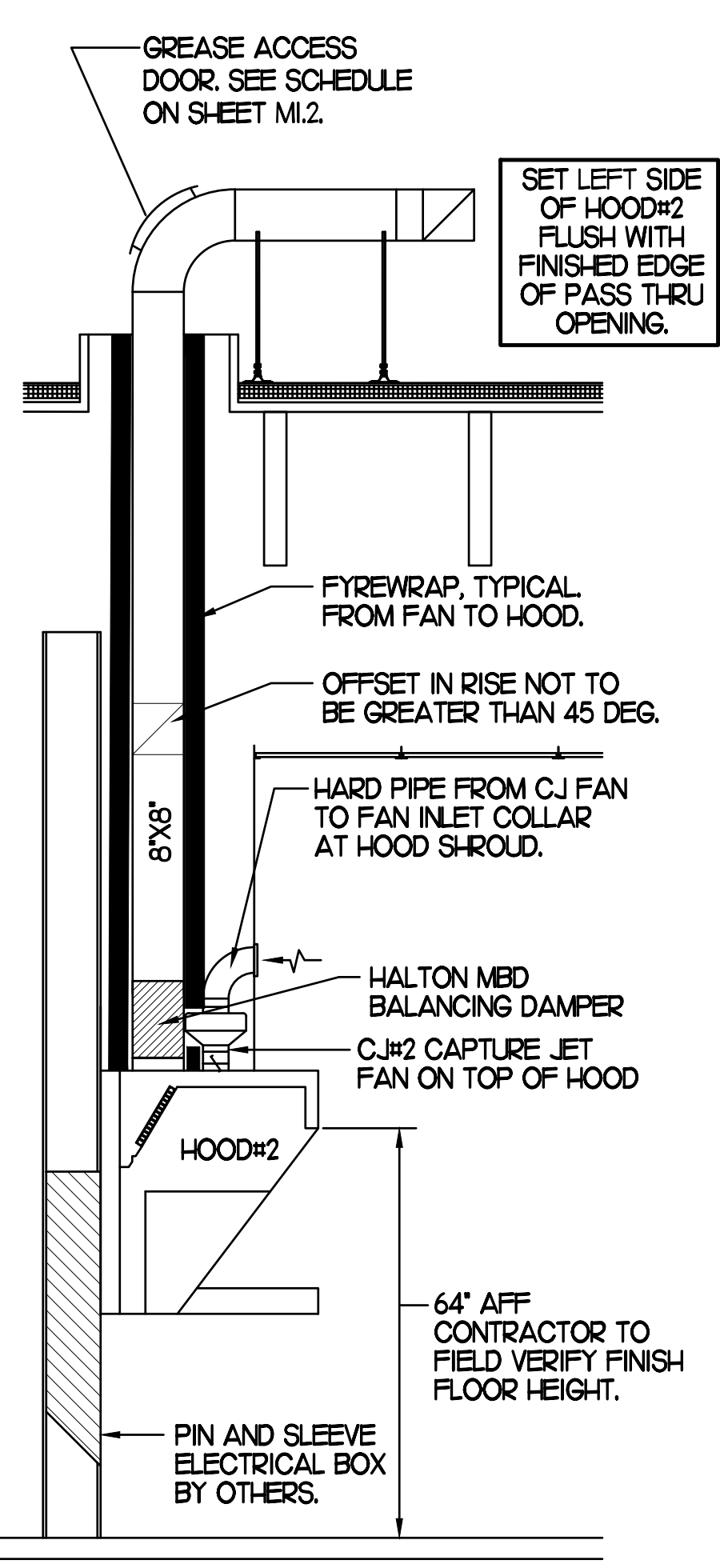
NOTE:  
SEE ARCHITECTURAL PLANS  
FOR HOOD LOCATIONS.

CLEANOUT DOOR NOTE:  
DUCT WRAP SHALL BE APPLIED TO THE CLEANOUT DOOR PER THE WRAP MFR'S INSTALLATION INSTRUCTIONS, NO EXCEPTIONS. ALSO, THE CLEANOUT DOOR MUST BE REMOVABLE WITHOUT TOOLS AND MUST BE CLEARLY AND PERMANENTLY LABELED.

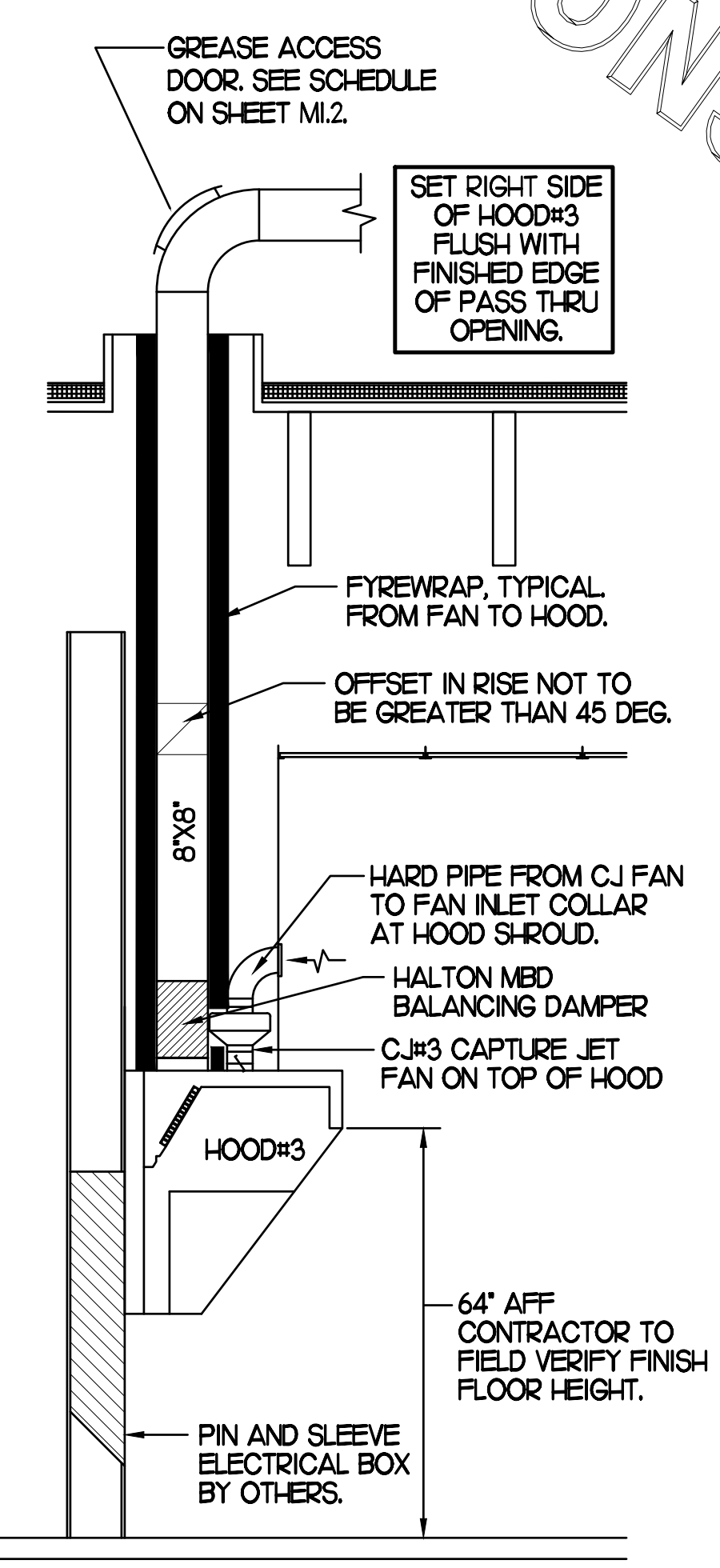
GREASE EXHAUST DUCT CLEARANCE NOTE:  
CLEARANCES ABOVE CEILING ARE TIGHT. MECHANICAL CONTRACTOR TO FIELD VERIFY EXACT ROUTING AND CLEARANCES PRIOR TO FABRICATING GREASE EXHAUST DUCT.



SECTION "A-A"

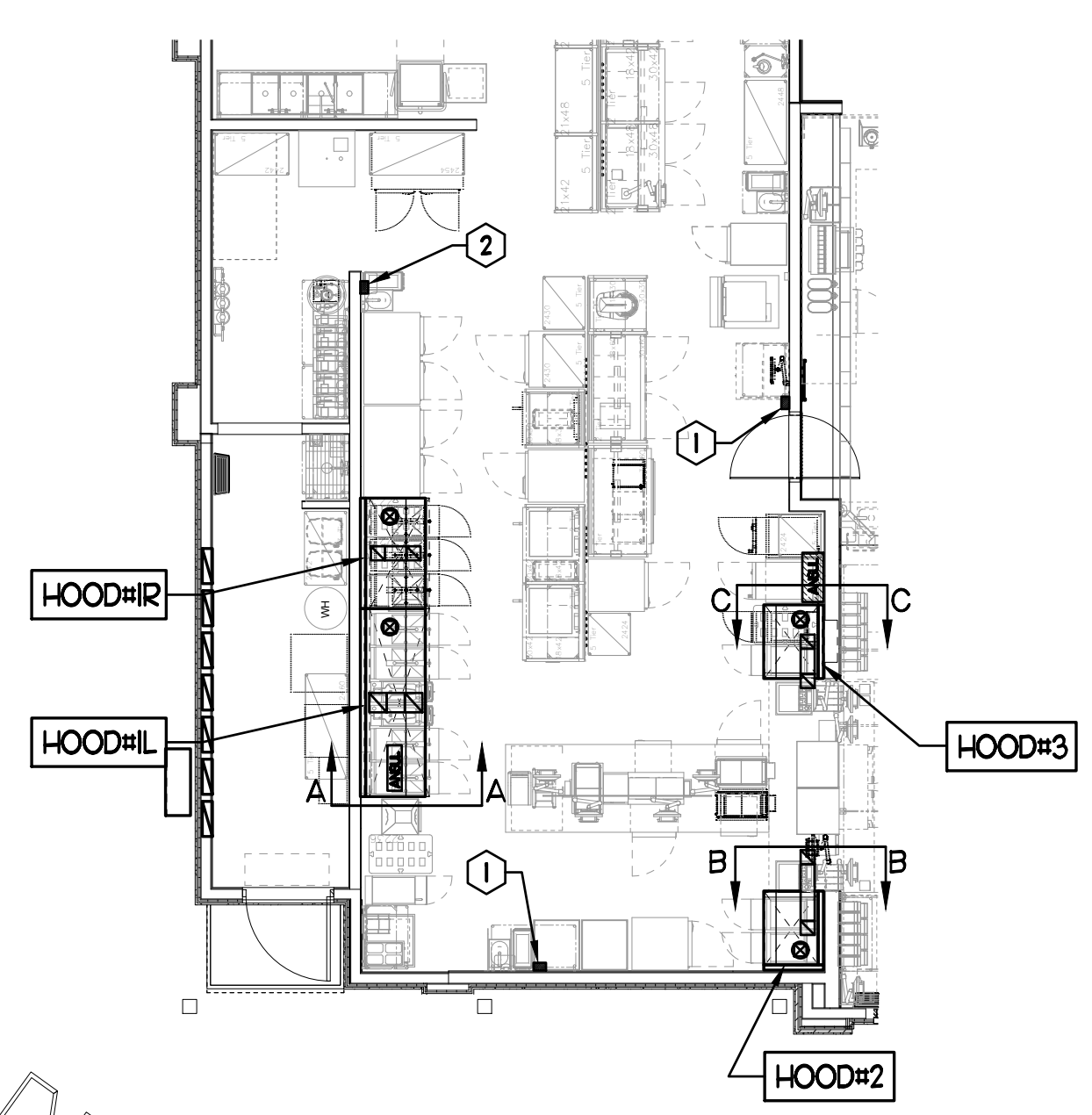


SECTION "B-B"



SECTION "C-C"

3 HOOD ELEVATIONS  
NONE

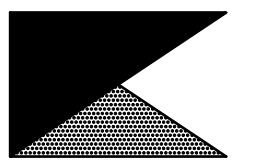


- KEY NOTES
1. ANSUL PULL STATIONS SERVING HOOD#2 AND HOOD#3. LOCATE ANSUL PULL STATION BETWEEN 42" AND 48" AFF. COORDINATE EXACT LOCATION WITH KITCHEN EQUIPMENT ELEVATIONS. J-BOX AND CONDUIT ARE BY ELECTRICAL. PROVIDE WHITE BAKELITE LABEL WITH 1/4" HIGH LETTERS INDICATING THE HOODS SERVED, I.E. "PASS-THRU HOODS". BOTH PULL STATIONS SERVE THE SAME REMOTE MOUNTED ANSUL TANKS.
  2. ANSUL PULL STATION SERVING HOOD#HL AND HOOD#R. LOCATE ANSUL PULL STATION BETWEEN 42" AND 48" AFF. COORDINATE EXACT LOCATION WITH KITCHEN EQUIPMENT ELEVATIONS. J-BOX AND CONDUIT ARE BY ELECTRICAL. PROVIDE WHITE BAKELITE LABEL WITH 1/4" HIGH LETTERS INDICATING THE HOODS SERVED, I.E. "MAIN COOKLINE HOODS".

1 HOOD LAYOUT  
1/8"=1'-0"



Chick-fil-A  
 5200 Buffington Road  
 Atlanta, Georgia 30349



Kurzynske & Associates  
 CONSULTING ENGINEERS  
 2705 Lebanon Pike - Suite One  
 Nashville, Tennessee 37214  
 Telephone: (615) 255-5203

Kurzynske & Associates License  
 No. F-0823, Expires 12/31/23



**CHICK-FIL-A**  
**NORTHLAKE PARKWAY**  
 8411 NORTHLAKE COMMONS BLVD  
 CHARLOTTE, NC 28216-2268

**FSR#01890**  
 BUILDING TYPE / SIZE: S03 A LRG  
 RELEASE: 22.05

REVISION SCHEDULE

NO.	DATE	DESCRIPTION

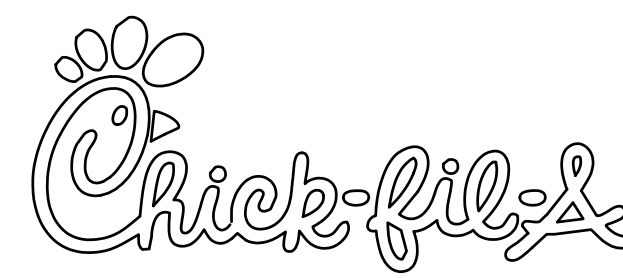
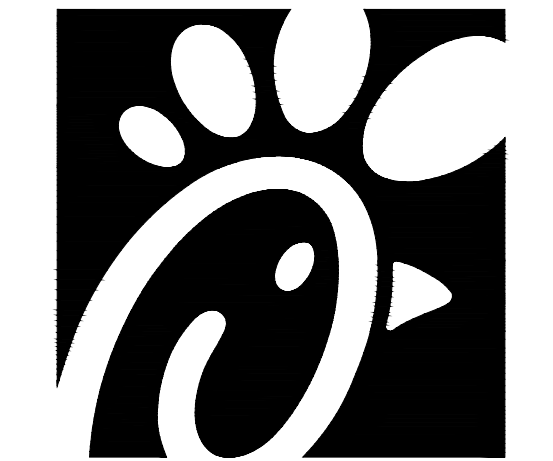
CONSULTANT PROJECT # 23047.HF.R  
 PRINTED FOR CONSTRUCTION  
 DATE 04/14/2023  
 DRAWN BY AK

Information contained on this drawing and in all digital files produced for above named project may not be reproduced in any manner without express written or verbal consent from authorized project representatives.  
 SHEET  
 HOOD DETAILS & SCHEDULES  
 SHEET NUMBER

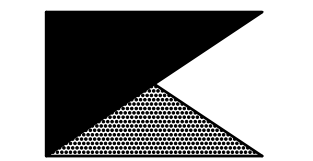
M2.1

CONSTRUCTION

EXISTING CONDITIONS SHOWN ARE FROM PREVIOUS DRAWINGS. MECHANICAL CONTRACTOR SHALL FIELD VERIFY EXACT LOCATIONS OF ALL DUCT AND DIFFUSERS. IF MAJOR DIFFERENCES OCCUR IN FIELD, CONTACT CHICK-FIL-A CONSTRUCTION MANAGER.



**Chick-fil-A**  
5200 Buffington Road  
Atlanta, Georgia 30349



**Kurzynske & Associates**  
CONSULTING ENGINEERS  
2705 Lebanon Pike - Suite One  
Nashville, Tennessee 37214  
Telephone: (615) 255-5203

Kurzynske & Associates License  
No. F-0823, Expires 12/31/23



**CHICK-FIL-A**  
**NORTHLAKE PARKWAY**  
8411 NORTHLAKE COMMONS BLVD  
CHARLOTTE, NC 28216-2268

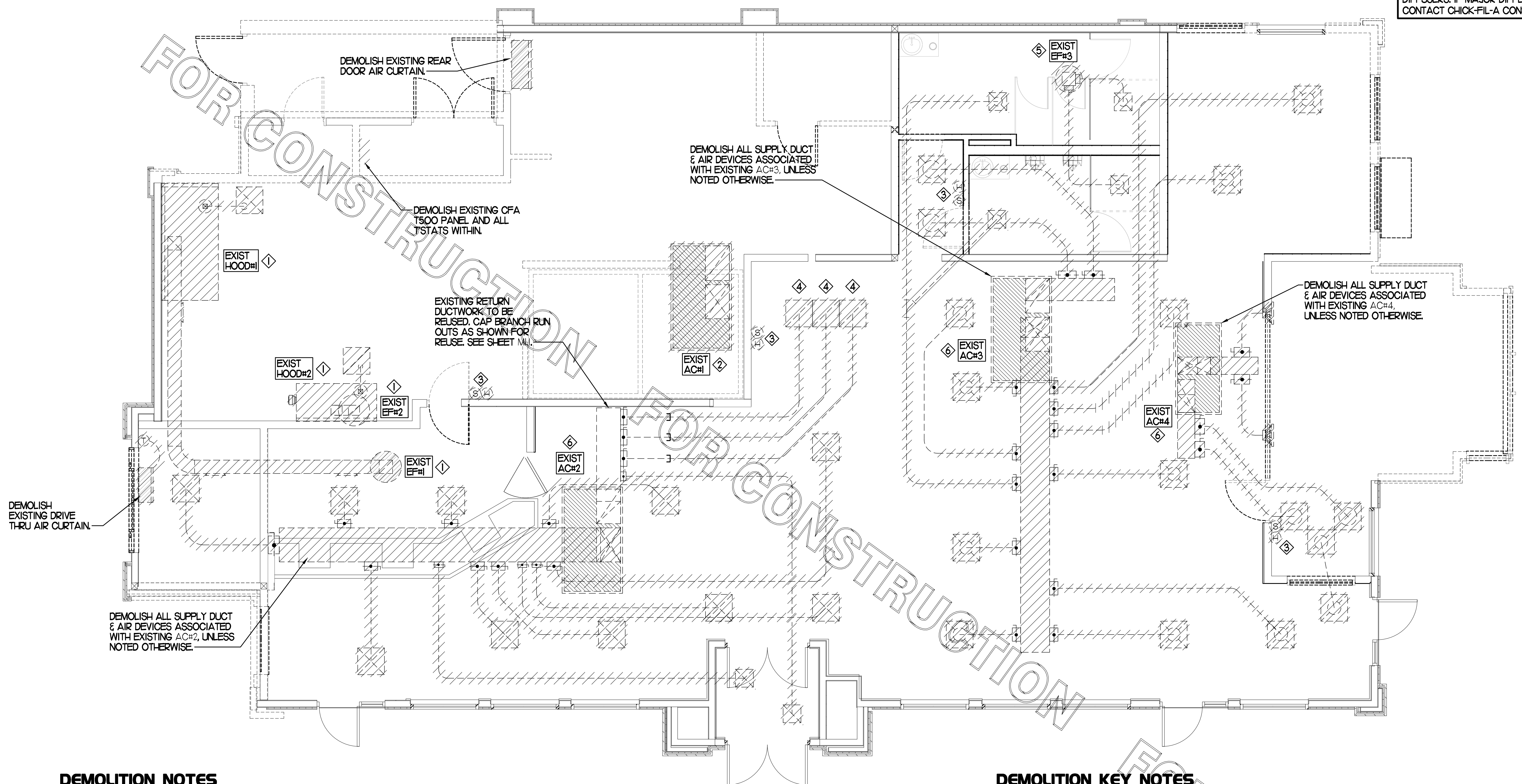
**FSR#01890**  
BUILDING TYPE / SIZE: S03 A LRG  
RELEASE: 22.05

REVISION SCHEDULE		
NO.	DATE	DESCRIPTION

CONSULTANT PROJECT #	23047.HF.R
PRINTED FOR	CONSTRUCTION
DATE	04/14/2023
DRAWN BY	AK

Information contained on this drawing and in all digital files produced for above named project may not be reproduced in any manner without express written or verbal consent from authorized project representatives.  
SHEET  
MECHANICAL  
DEMO PLAN  
SHEET NUMBER

**M0.1**



**DEMOLITION NOTES**

- CONTRACTOR IS RESPONSIBLE FOR OBTAINING ALL NECESSARY PERMITS AND PAYING ALL APPLICABLE FEES.
- DISPOSAL OF EQUIPMENT AND MATERIALS REQUIRED TO BE REMOVED SHALL BE THE RESPONSIBILITY OF THE CONTRACTOR PERFORMING THE WORK.
- DE-ENERGIZE ALL ELECTRICAL CIRCUITS RELATED TO EQUIPMENT THAT WILL BE MOVED OR REMOVED PRIOR TO STARTING WORK. DE-ENERGIZED CIRCUITS SHALL BE PROTECTED WITH LOCKING DEVICES USING APPROPRIATE WARNING LABELS.
- MECHANICAL CONTRACTOR SHALL BE RESPONSIBLE FOR PATCHING ROOF AFTER REMOVAL OF EXISTING MECHANICAL EQUIPMENT. SEE ARCHITECTURAL DRAWINGS FOR ROOF PATCHING REQUIREMENTS.
- EXCEPT WHERE NOTED, EXISTING REMOTE TEMPERATURE &/OR HUMIDITY SENSORS TO REMAIN. IF DURING RENOVATION PURPOSES CONTROLS SHALL BE TAKEN DOWN, MECHANICAL CONTRACTOR SHALL BE RESPONSIBLE FOR REINSTALLING AND TO PROVIDE ANY ADDITIONAL WIRING NEEDED. VERIFY EXISTING UNIT CONTROLS ARE IN GOOD WORKING ORDER. IF NOT, CONTACT CHICK-FIL-A CONSTRUCTION MANAGER.
- MECHANICAL CONTRACTOR SHALL REPLACE FILTERS FOR ALL RTUs AT END OF PROJECT AND PRIOR TO REOPENING. MC TO PROVIDE PROPOSAL TO FACILITIES MANAGER, CONSTRUCTION MANAGER, AND OPERATOR TO CORRECT EXISTING RTU PUNCH ITEMS IDENTIFIED BY HALTON.
- CONTRACTOR SHALL INDICATE SALVAGE VALUE IN BID FOR ROOFTOP UNITS BEING REPLACED.

**MECHANICAL DEMOLITION FLOOR PLAN**  
SCALE: 1/4"=1'-0"

DEMOLITION LEGEND	
	EXISTING EQUIPMENT, DUCT, AIR DEVICE ETC. TO REMAIN INTACT
	EQUIPMENT, DUCT, AIR DEVICE ETC. TO BE DEMOLISHED

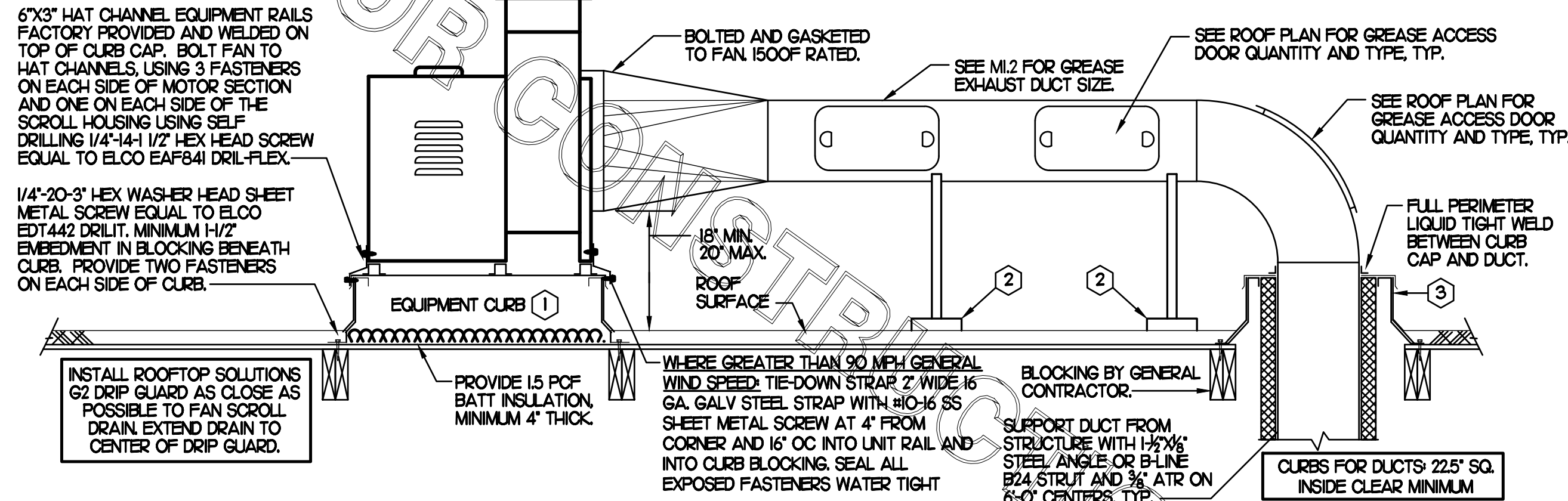
**DEMOLITION KEY NOTES**

- DEMOLISH EXISTING HOOD, ALL ASSOCIATED GREASE DUCT, CAPTURE JET FAN AND DIFFUSER (IF EXISTING), EXHAUST FAN, AND IT'S ASSOCIATED ROOF CURB. PATCH AND REPAIR ROOF TO MATCH SURROUNDING CONSTRUCTION.
- DEMOLISH EXISTING KITCHEN A/C UNIT, UNIT CONTROLS (REMOTE TEMP SENSOR, REMOTE HUMIDITY SENSOR, TSTAT, REMOTE SMOKE DETECTOR TEST/RESET STATION, ETC), SUPPLY/RETURN AIR DROPS, ALL ASSOCIATED SUPPLY/RETURN DUCT & AIR DEVICES (UNLESS NOTED OTHERWISE), AND ASSOCIATED ROOF CURB. PATCH AND REPAIR ROOF TO MATCH SURROUNDING CONSTRUCTION.
- EXISTING REMOTE TEMPERATURE AND/OR REMOTE HUMIDITY SENSORS TO BE REPLACED WITH NEW. DEMOLISH ALL ASSOCIATED CONTROL WIRING. SEE SHEET M.II FOR FURTHER INFORMATION.
- DETACH AND DEMOLISH EXISTING AIR DEVICE. DEMOLISH EXISTING DUCT TO WHERE SHOWN. SECURE DUCT ABOVE CEILING GRID FOR RE-CONNECTION. SEE SHEET M.II FOR NEW CONNECTION.
- DEMOLISH EXISTING EXHAUST FAN, ASSOCIATED CONTROLS, ALL ASSOCIATED EXHAUST DUCT & AIR DEVICES, AND ASSOCIATED ROOF CURB. PATCH AND REPAIR ROOF TO MATCH SURROUNDING CONSTRUCTION.
- EXISTING A/C UNIT TO REMAIN. SEE SHEET M.II FOR NEW DUCTWORK LAYOUT AND ASSOCIATED AIR BALANCE.

FABRICATE 18 GA STAINLESS NOZZLE. NOZZLE INLET FULL SIZE OF FAN DISCHARGE. 1'-0" MINIMUM NOZZLE HEIGHT. TERMINATE 0'-2" ABOVE HIGHEST PARAPET WITHIN 10'-0".

**KEYED NOTES**

- EQUIPMENT CURB WITH REINFORCED BASE AND STEEL CURB CAP PROVIDED BY TOM BARRON COMPANY. WIDTH OF CURB SHALL BE 4" WIDER THAN FAN FOOTPRINT IN BOTH DIRECTIONS. HEIGHT OF CURB SHALL BE SUCH THAT NO PART OF ANY DUCT TO BE WITHIN 18" OF ROOF SURFACE. PROVIDE FACTORY EQUIPMENT RAILS WELDED TO CAP.
- ALL DUCT ON ROOF TO BE SUPPORTED WITH MIRO 6-DS DUCT SUPPORT SYSTEM AT 6'-0" INTERVALS MAXIMUM. PROVIDE MIRO SUPPORT PADS AT EACH SUPPORT. ATTACH SUPPORT TO DUCT. PROVIDE A DUCT SUPPORT STAND AT EACH ROOF PENETRATION.
- 12" HIGH INSULATED CURB PROVIDED BY TOM BARRON COMPANY. MECHANICAL CONTRACTOR TO PROVIDE 16 GA MINIMUM CURB CAP.



**2 KITCHEN HOOD EXHAUST FAN - UTILITY SET FAN**

NO SCALE

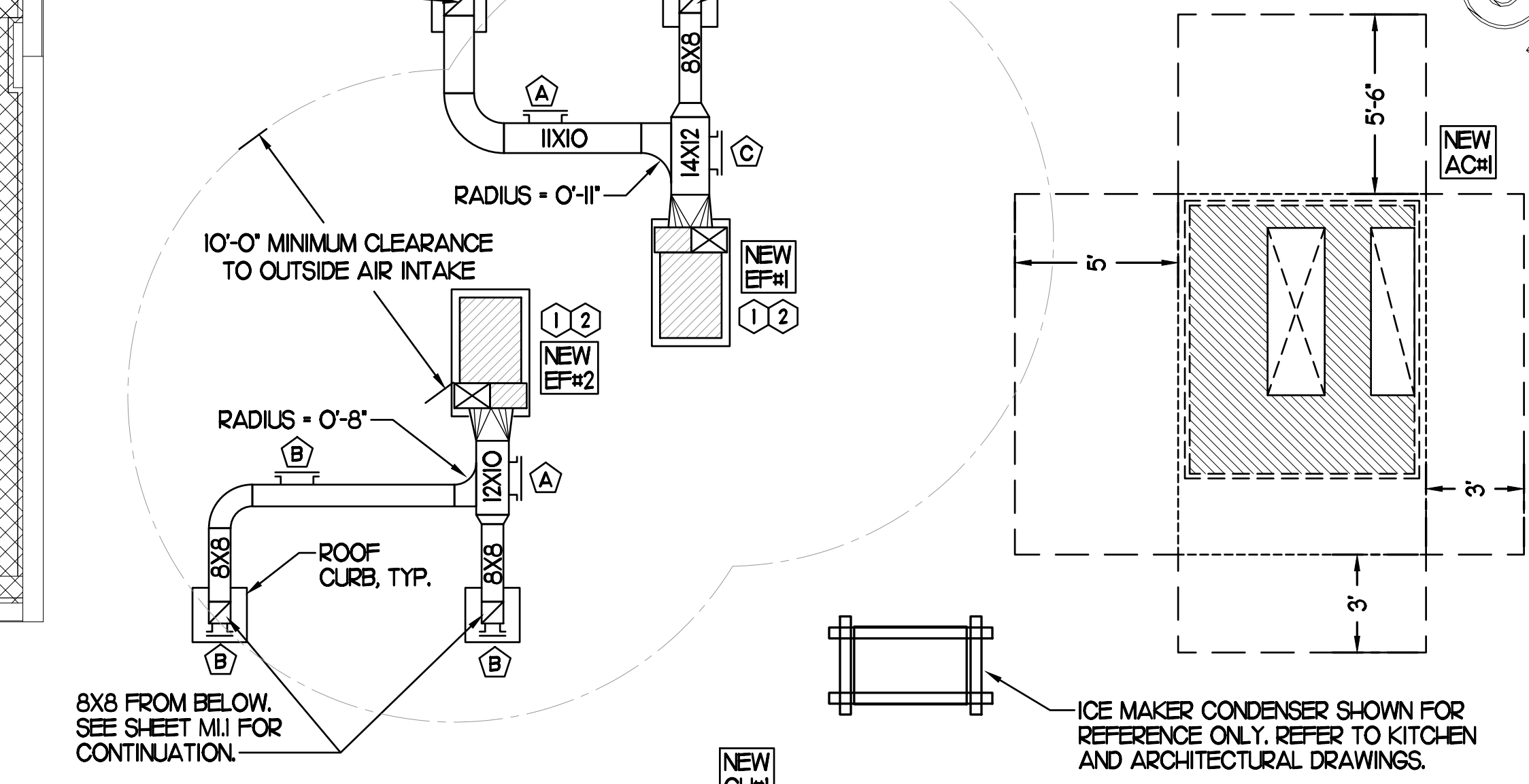
GREASE ACCESS DOOR. SEE GREASE ACCESS DOOR SCHEDULE THIS SHEET FOR SIZING AND CONSTRUCTION. TYPICAL.

WATER HEATER EXHAUST AIR PIPE. SEE INSTALLATION DETAILS ON SHEET M3.1.

WATER HEATER INTAKE AIR PIPE. SEE INSTALLATION DETAILS ON SHEET M3.1.

10X11 FROM BELOW. SEE SHEET M1.1 FOR CONTINUATION.

8X8 FROM BELOW. SEE SHEET M1.1 FOR CONTINUATION.



SET CONDENSING UNIT ON ROOF USING TWO CURBS PLUS CPES-1 EQUIPMENT CURBS. SECURE CONDENSING UNIT TO CURBS ARRANGED IN PARALLEL. SET LONG SIDE OF CURB PARALLEL TO ROOF SLOPE. FLASH INTO ROOF BY GC. COORDINATE EXACT LOCATION WITH STRUCTURAL DRAWINGS. ALL MAINTENANCE CLEARANCES OF NEW AND EXISTING EQUIPMENT SHALL BE MAINTAINED.

8X8 FROM BELOW. SEE SHEET M1.1 FOR CONTINUATION.

NEW CURB#1

EXIST AC#2

ICE MAKER CONDENSERS SHOWN FOR REFERENCE ONLY. REFER TO KITCHEN AND ARCHITECTURAL DRAWINGS.

ICE MAKER CONDENSERS SHOWN FOR REFERENCE ONLY. REFER TO KITCHEN AND ARCHITECTURAL DRAWINGS.

WALK-IN CONDENSERS SHOWN FOR REFERENCE ONLY. REFER TO KITCHEN AND ARCHITECTURAL DRAWINGS.

EXHAUST FAN OUTLET SHALL MAINTAIN MINIMUM 10'-0" CLEARANCE FROM ANY FRESH AIR INTAKE.

EXIST AC#3

EXIST AC#4

EXISTING CONDITIONS SHOWN ARE FROM PREVIOUS DRAWINGS. MECHANICAL CONTRACTOR SHALL FIELD VERIFY EXACT LOCATIONS OF ALL DUCT AND DIFFUSERS. IF MAJOR DIFFERENCES OCCUR IN FIELD, CONTACT CHICK-FIL-A CONSTRUCTION MANAGER.

**SHEET NOTES**

- ALL DUCTWORK AND UNFINISHED METAL ON ROOF EXCEPT STAINLESS SHALL BE PREPARED WITH TWO COATS OF SHERWIN WILLIAMS B66-200 SERIES DTM WHITE ACRYLIC SEMI-GLOSS INDUSTRIAL MAINTENANCE COATING, DEGREASE AND PRIME BARE METAL SURFACE WITH ONE COAT OF SHERWIN WILLIAMS DTM PRIMER PRIOR TO PAINTING.
- AT EACH PIECE OF ROOF EQUIPMENT, PROVIDE A PLASTIC ENGRAVED LABEL WITH 1" HIGH WHITE LETTERS ON A BLACK BACKGROUND. THE LABEL IS TO HAVE A SELF-ADHESIVE BACKING.
- MAINTAIN 18" CLEARANCE FROM GREASE EXHAUST DUCTWORK ABOVE ROOF TO ANY COMBUSTIBLE CONSTRUCTION INCLUDING PARAPET WALLS.

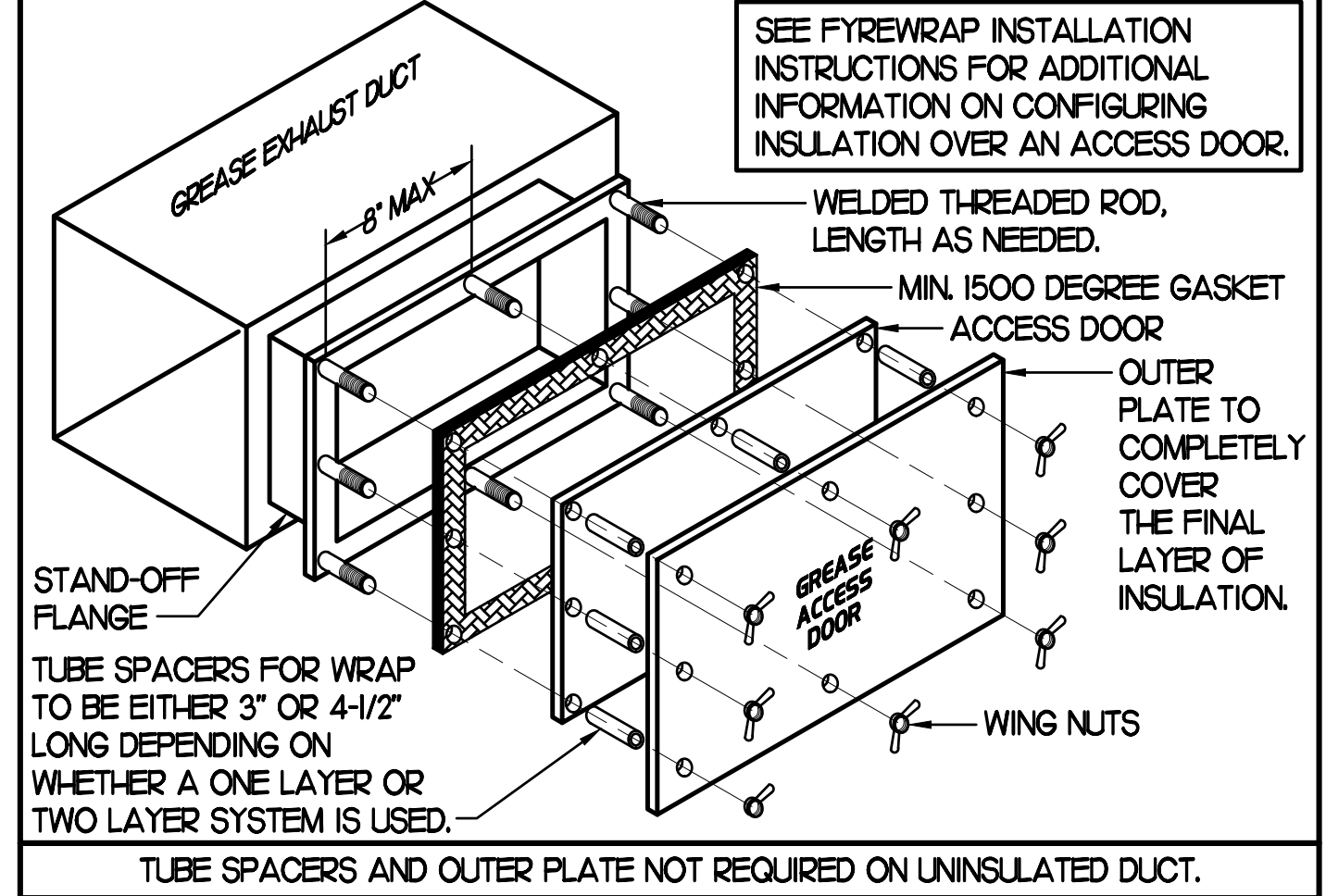
**KEY NOTES**

- FABRICATE DISCHARGE AIR NOZZLE. LOCATE EXHAUST TERMINATION A MINIMUM 10'-0" FROM OUTSIDE AIR INTAKES. SEE DETAIL 2 THIS SHEET.
- GREASE EXHAUST DUCT LOCATED ON ROOF SHALL SLOPE 1/4" PER FOOT TOWARDS THE HOOD. THE FAN OR A COMBINATION OF THE TWO SUCH THAT NO PORTION OF THE RADIUS ELBOW AT THE CURB IS BELOW THE CURB CAP AND SUCH THAT THE FAN BASE SETS DIRECTLY ON THE CURB RAILS. THE BOTTOM OF THE RADIUS ELBOW MAY BE EVEN FLUSH WITH THE CURB CAP, BUT NOT BELOW THE CAP. THE DUCT AT THE FAN MUST BE CENTERED ON THE FAN INLET. THE MC MAY ADD A VERTICAL RISER AT THE RADIUS ELBOW LOCATED AT THE DUCT CURB AS NEEDED IN ORDER TO CENTER THE DUCT ON THE FAN INLET.

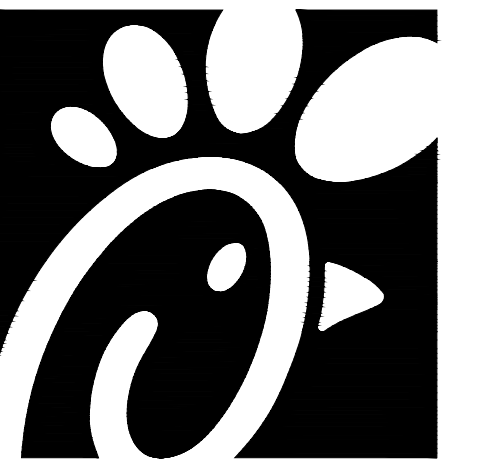
**GREASE ACCESS DOOR SCHEDULE**

MARK	OPENING SIZE	DOOR SIZE	REMARKS
A	7.5H X 14W	9.5H X 16W	I
B	5.5H X 14W	7.5H X 16W	I
C	9.5H X 14W	11.5H X 16W	I
D	8.5H X 14W	10.5H X 16W	I

I. ACCESS DOORS SHALL BE UL 1978 LISTED OR FIELD FABRICATED, REQUIRE NO TOOLS FOR REMOVAL AND MEET THE REQUIREMENTS OF THE CURRENT EDITION OF THE IMC. ACCESS DOOR ASSEMBLY SHALL BE WELDED IN PLACE TO THE GREASE EXHAUST DUCT AND THE ACCESS DOOR SHALL BE SECURED WITH THUMB SCREWS. ACCESS DOORS SHALL BE SEALED WITH A MINIMUM 1500 DEGREE GASKET MATERIAL EQUIVALENT TO THAT MANUFACTURED BY BRETON INDUSTRIES, INC (800) 382-2491.

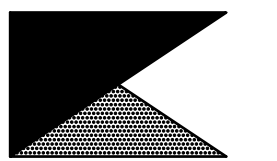


TUBE SPACERS AND OUTER PLATE NOT REQUIRED ON UNINSULATED DUCT.



Chick-fil-A

Chick-fil-A  
5200 Buffington Road  
Atlanta, Georgia 30349



Kurzynske & Associates  
CONSULTING ENGINEERS  
2705 Lebanon Pike - Suite One  
Nashville, Tennessee 37214  
Telephone: (615) 255-5203

Kurzynske & Associates License  
No. F-0823, Expires 12/31/23



**CHICK-FIL-A**  
**NORTHLAKE PARKWAY**  
8411 NORTHLAKE COMMONS BLVD  
CHARLOTTE, NC 28216-2268

**FSR#01890**

BUILDING TYPE / SIZE: S03 A LRG  
RELEASE: 22.05

**REVISION SCHEDULE**

NO.	DATE	DESCRIPTION
1	05/10/23	Plan Review Comments
2	07/07/23	Site and Building Modification

CONSULTANT PROJECT # 23047.HF.R  
PRINTED FOR CONSTRUCTION  
DATE 04/14/2023  
DRAWN BY AK

Information contained on this drawing and in all digital files produced for above named project may not be reproduced in any manner without express written or verbal consent from authorized project representatives.  
SHEET  
MECHANICAL  
ROOF PLAN  
SHEET NUMBER

**1 MECHANICAL ROOF PLAN**

SCALE: 1/4"=1'-0"

**M1.2**

CONSTRUCTION

A

B

C

D

E

E

D

C

B

A

**REFRIGERATION EQUIPMENT SCHEDULE**

EQUIPMENT	PLAN MARK	MANUFACTURER	MODEL	WIDTH (IN.)	DEPTH (IN.)	HEIGHT (IN.)	REFRIGERANT				PRE-CHARGE LINES (FT)	MATERIAL	WEIGHT (LBS)			
							TYPE	CLASSIFICATION	SYSTEM CLASSIFICATION	MAX. ALLOWED (LB / 1000QFT)				SPACE VOLUME (QFT)	MAX. ALLOWED TOTAL (LB)	AMOUNT OF CHARGE (LB)
ICE MAKER CONDENSER	380C	FOLLET	HCD1410	22.7	24.5	21.25	R 404A	A1	LOW	31	--	--	12.5	35	COPPER	270
ICE MAKER CONDENSER	380CD	FOLLET	HCD1810	30.0	38.5	25.75	R 404A	A1	LOW	31	--	--	14.5	35	COPPER	305
ICE MAKER CONDENSER	380CD	FOLLET	HCD1810	30.0	38.5	25.75	R 404A	A1	LOW	31	--	--	14.5	35	COPPER	305
FREEZER CONDENSER	410A	THERMO-KOOL	M0H031L63	37.75	28.25	19.75	R 404A	A1	LOW	31	786	24	14.0	40	COPPER	223
COOLER CONDENSER	449A	THERMO-KOOL	M0H010X63	23.75	28.25	17.25	R 404A	A1	LOW	31	813	25	5.5	40	COPPER	138

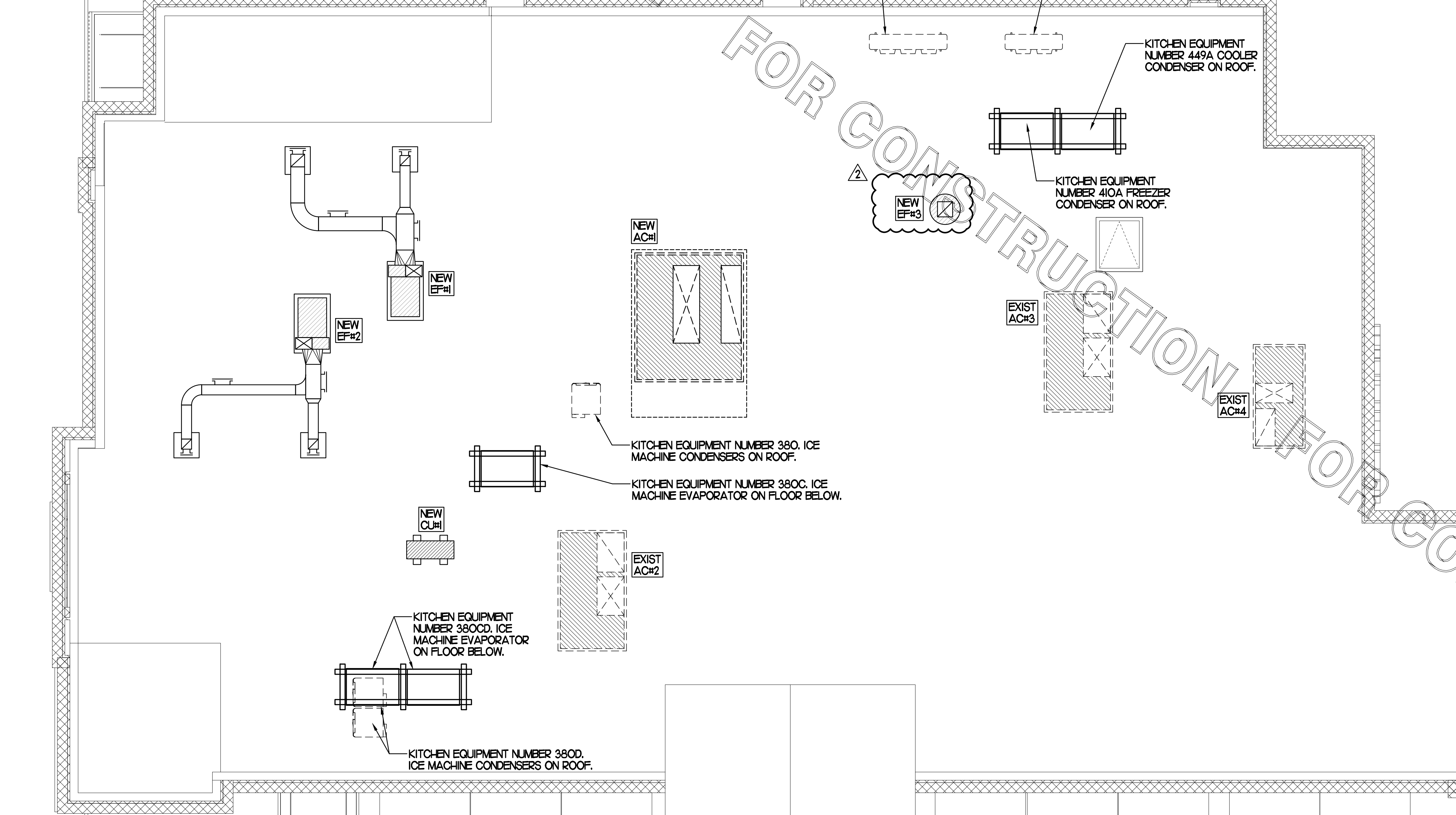
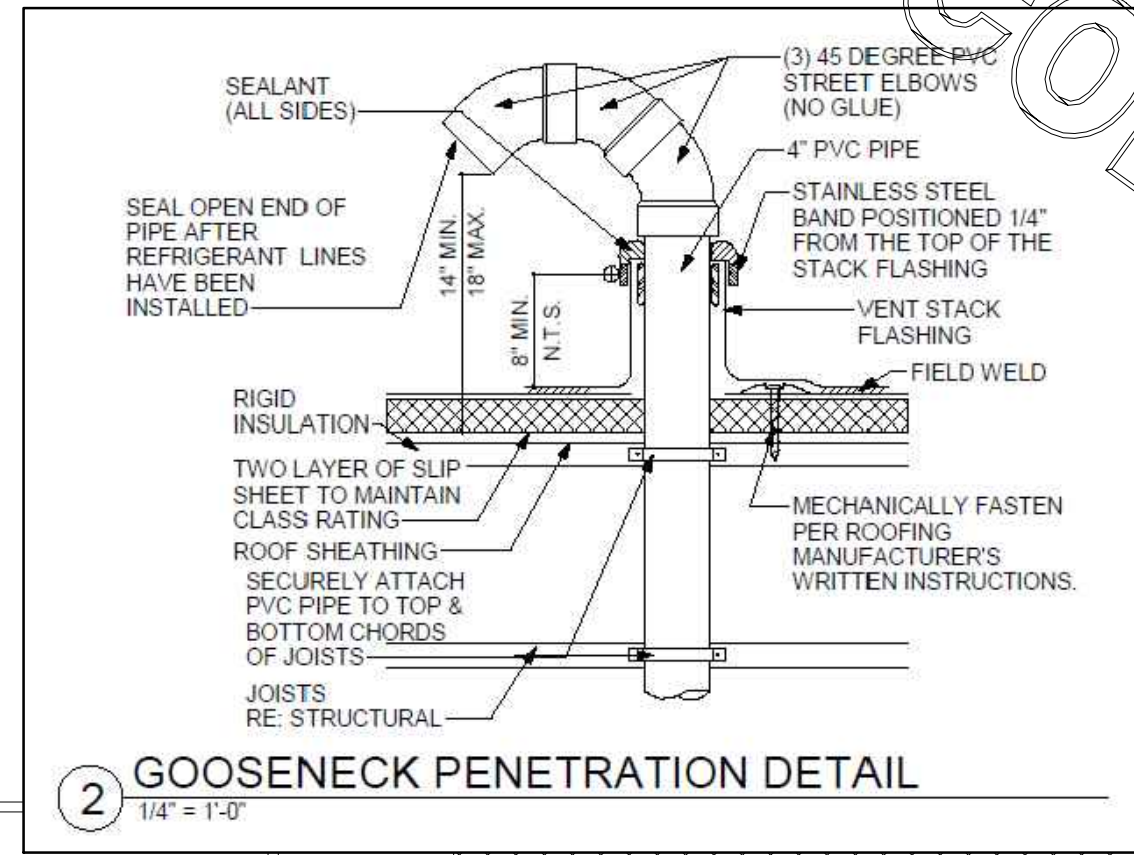
**REFRIGERATION CALCULATIONS AND OTHER INFORMATION REQUIRED PER CHAPTER 11 NCMC**

WALK-IN COOLER/FREEZER  
 1. REFRIGERANT TYPE: R-404A  
 2. REFRIGERATION CLASSIFICATION: A1  
 3. REFRIGERANT SYSTEM CLASSIFICATION: LOW PROBABILITY  
 4. MAXIMUM REFRIGERANT QUANTITY: 31 LBS./1000FT3  
 5. SYSTEM APPLICATION/VOLUME CALCULATION:  
 A - COOLER VOLUME: 11'-5"L X 7'-6"W X 9'-6"H  
 813 FT3  
 B - FREEZER VOLUME: 11'-5"L X 7'-3"W X 9'-6"H  
 786 FT3

6. MAXIMUM ALLOWABLE REFRIGERANT IN SYSTEM:  
 A - COOLER: 813 \* (31LB./1000FT3) = 25.2 LB MAX  
 B - FREEZER: 786 \* (31LB./1000FT3) = 24.4 LB MAX

FREEZER AND COOLER SHALL HAVE NO MORE THAN THE MAXIMUM ALLOWABLE REFRIGERANT SHOWN ABOVE.

OTHER ITEMS REQUIRED FOR REVIEW:  
 1) PIPING MATERIAL SHALL COMPLY WITH 1107.5 NCMC. COPPER REFRIGERANT PIPING IS TO BE USED FOR INSTALLATION.  
 2) ROOF REFRIGERANT PIPE PENETRATION SHOWN ON THIS SHEET, "GOOSENECK PENETRATION DETAIL".  
 3) WALK-IN COOLER/FREEZER CONDENSING AND EVAPORATOR CUT SHEETS ARE LOCATED ON SHEET M3.3.  
 4) EVAPORATOR AND CONDENSING UNIT LOCATIONS ARE SHOWN ON THIS SHEET ON THE ROOF PLAN.  
 5) EVAPORATOR CONDENSATE PIPING IS SHOWN ON SHEETS P1.1 AND P2.1.



**1** MECHANICAL REFRIGERATION PLAN  
 SCALE: 1/4"=1'-0"



Chick-fil-A

**Chick-fil-A**  
 5200 Buffington Road  
 Atlanta, Georgia 30349



**Kurzynske & Associates**  
 CONSULTING ENGINEERS  
 2705 Lebanon Pike - Suite One  
 Nashville, Tennessee 37214  
 Telephone: (615) 255-5203

Kurzynske & Associates License  
 No. F-0823, Expires 12/31/23



**CHICK-FIL-A**  
**NORTHLAKE PARKWAY**  
 8411 NORTHLAKE COMMONS BLVD  
 CHARLOTTE, NC 28216-2268

**FSR#01890**  
 BUILDING TYPE / SIZE: S03 A LRG  
 RELEASE: 22.05

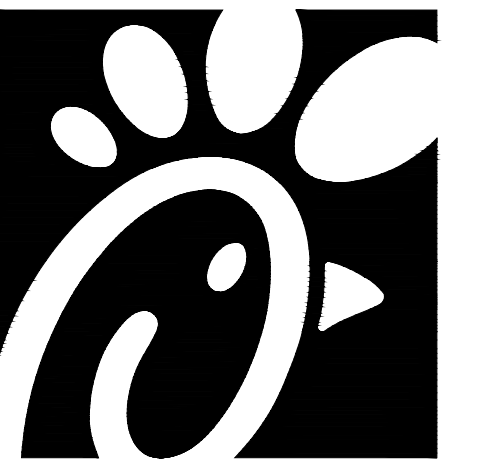
NO.	DATE	DESCRIPTION
2	07/07/23	Site and Building Modification

CONSULTANT PROJECT # 23047.HF.R  
 PRINTED FOR CONSTRUCTION  
 DATE 04/14/2023  
 DRAWN BY AK

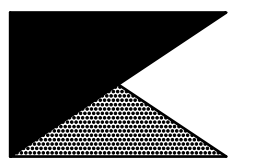
Information contained on this drawing and in all digital files produced for above named project may not be reproduced in any manner without express written or verbal consent from authorized project representatives.  
 SHEET  
 MECHANICAL  
 REFRIGERATION PLAN  
 SHEET NUMBER

**M3.2**

CONSTRUCTION



**Chick-fil-A**  
5200 Buffington Road  
Atlanta, Georgia 30349



**Kurzynske & Associates**  
CONSULTING ENGINEERS  
2705 Lebanon Pike - Suite One  
Nashville, Tennessee 37214  
Telephone: (615) 255-5203

Kurzynske & Associates License  
No. F-0823, Expires 12/31/23



**CHICK-FIL-A**  
**NORTHLAKE PARKWAY**  
8411 NORTHLAKE COMMONS BLVD  
CHARLOTTE, NC 28216-2268

**FSR#01890**  
BUILDING TYPE / SIZE: S03 A LRG  
RELEASE: 22.05

REVISION SCHEDULE		
NO.	DATE	DESCRIPTION

CONSULTANT PROJECT #	23047.HF.R
PRINTED FOR	CONSTRUCTION
DATE	04/14/2023
DRAWN BY	AK

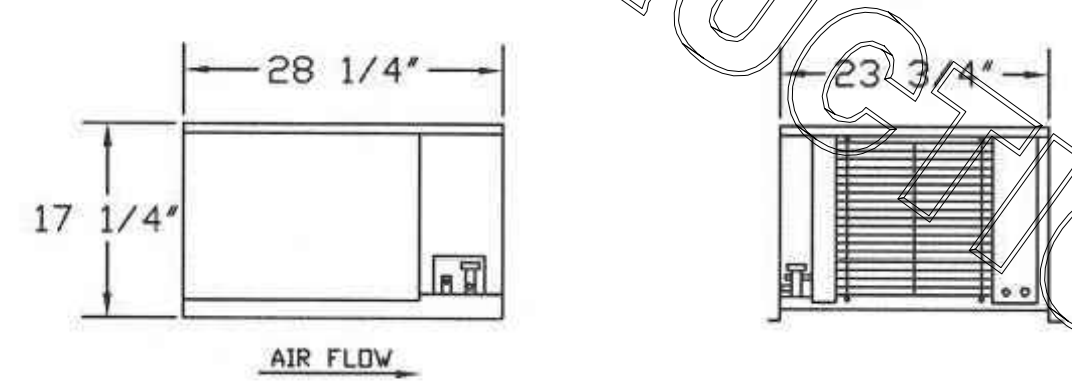
Information contained on this drawing and in all digital files produced for above named project may not be reproduced in any manner without express written or verbal consent from authorized project representatives.  
SHEET  
MECHANICAL  
REFRIGERATION DETAILS  
SHEET NUMBER

**M3.3**

FOR CONSTRUCTION

**CHICK-FIL-A**

**HERMETIC CONDENSING UNIT** R-404A  
208-230/60/3ø



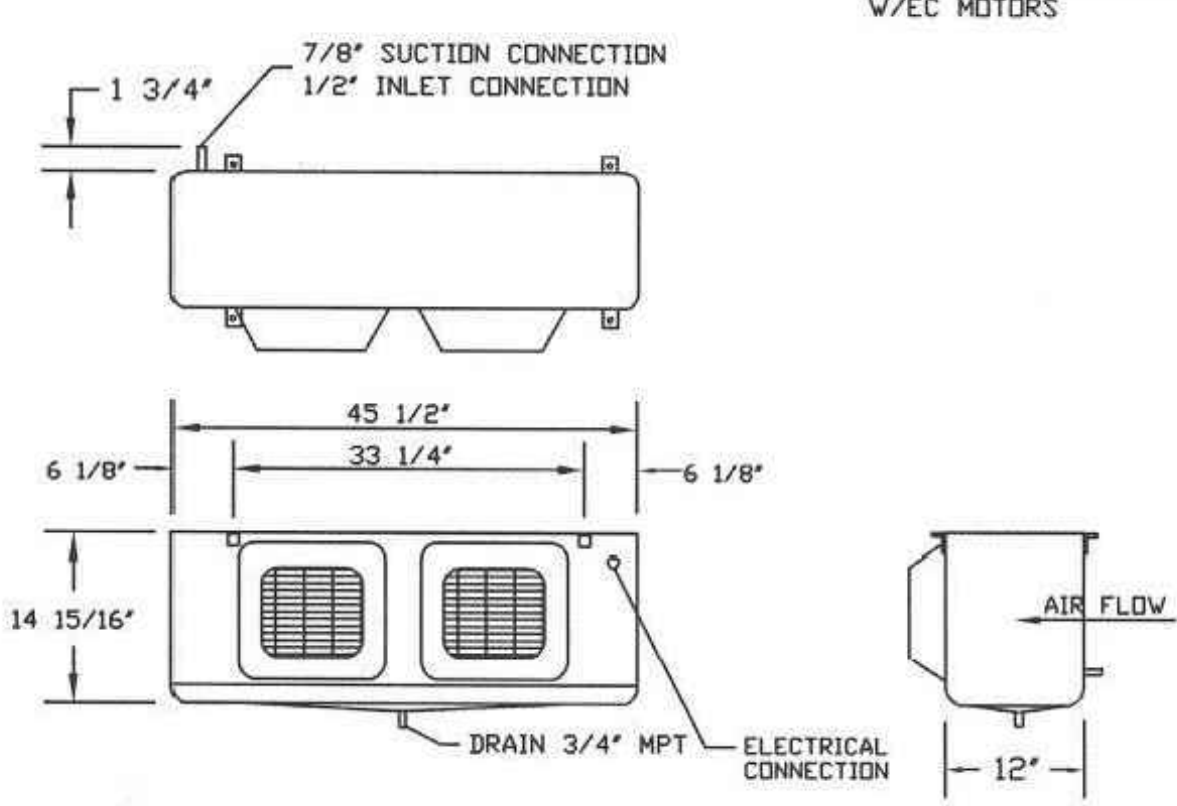
SPECIFICATIONS								
MODEL #	HP.	ELECTRICAL DATA			CAPACITY @ 35° WALK-IN TEMP. (90° AMBIENT)	LINE SIZES		APPROX. NET WEIGHT
		COMPRESSOR AMPS	MCA	MOPD		LIQUID	SUCTION	
MDH010X63	1	5.75	15	15	9,300 BTU	3/8"	5/8"	138 LBS.

RECEIVER CAPACITY @ 90% FULL: 5.5H

**EVAPORATOR COIL**  
208-230/60/1ø

SPECIFICATIONS								
MODEL #	QTY. MOTORS	AIR FLOW (CFM)	ELECTRICAL DATA		LINE SIZES			APPROX. NET WEIGHT
			AMPS	WATTS	INLET	SUCTION	DRAIN	
TKM-0900	2	1400	1.0	118	1/2" DD	7/8" DD	3/4" MPT	48 LBS.

1/4" DD EXTERNAL EQUALIZER CONNECTION W/EC MOTORS



MOH010X63 208-230/60/3ø W/  
TKM-0900 208-230/60/1ø



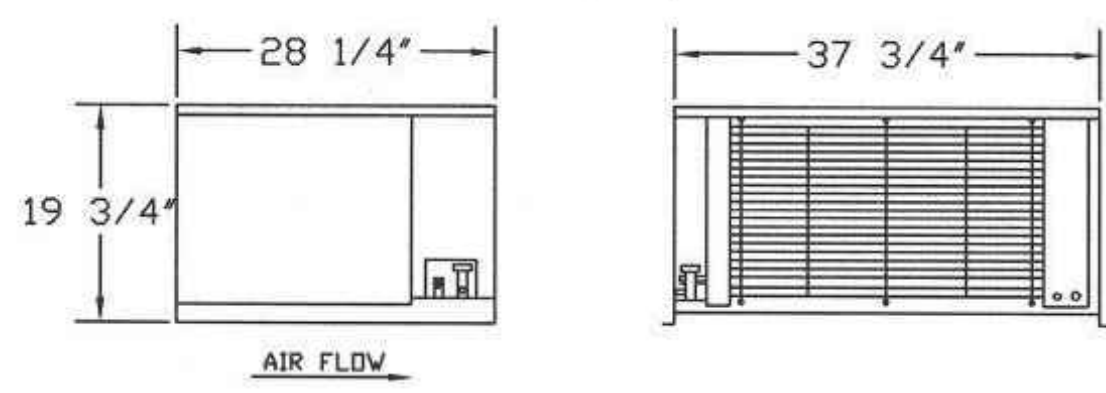
Mid-South Industries, Inc. • P.O. Box 989  
Laurel, Mississippi 39441 • Phone 601/649-4600  
FAX 601/649-0598

/nh Rev.9-12-11

**1 WALK-IN COOLER MECHANICAL EQUIPMENT DETAIL**  
NTS

**CHICK-FIL-A**

**HERMETIC LOW TEMPERATURE CONDENSING UNIT** R-404A  
208-230/60/3ø



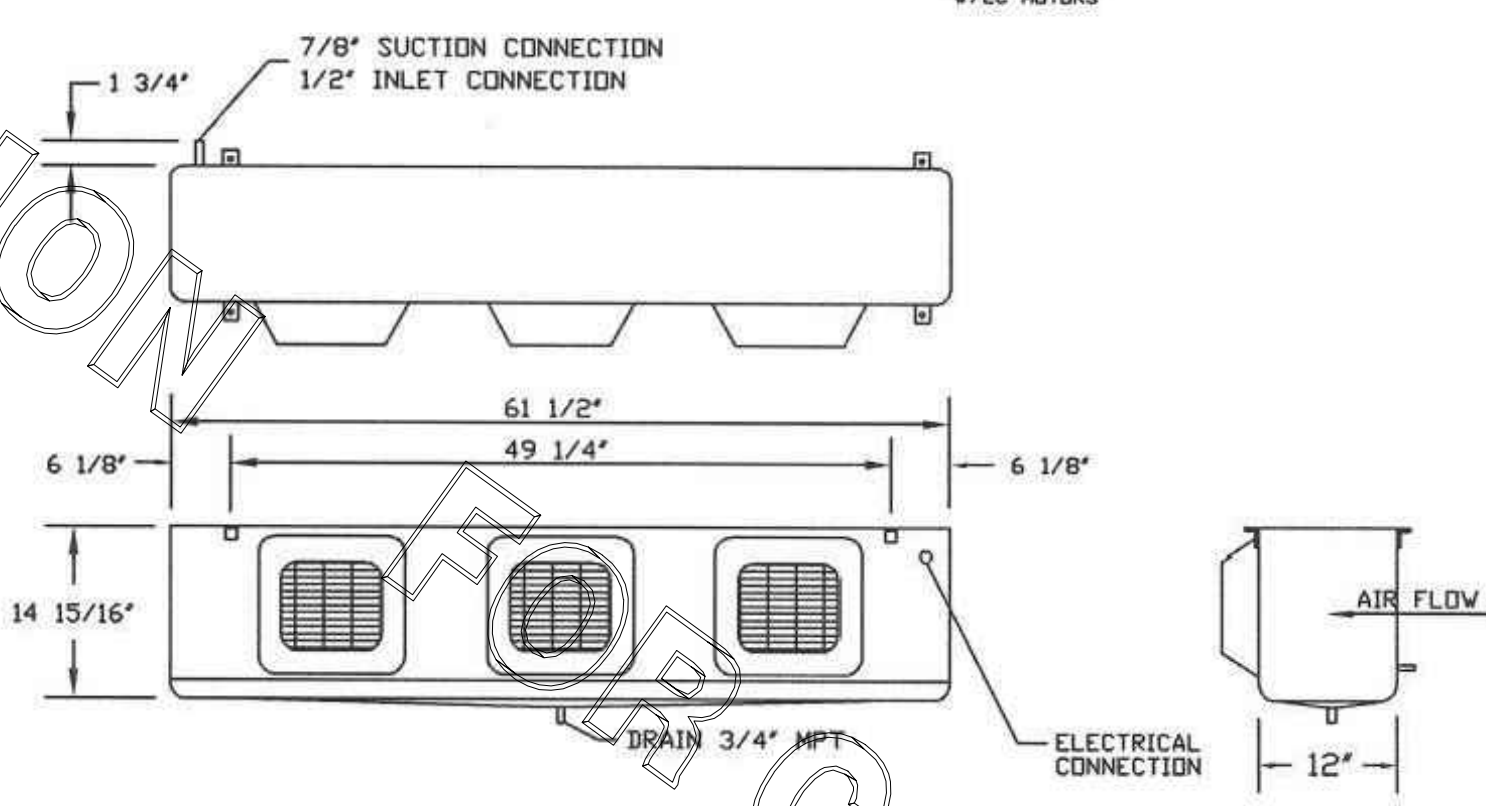
SPECIFICATIONS								
MODEL #	H.P.	ELECTRICAL DATA			CAPACITY @ -10° WALK-IN TEMP. (90° AMBIENT)	LINE SIZES		APPROX. NET WEIGHT
		COMPRESSOR AMPS	MCA	MOPD		LIQUID	SUCTION	
MDH031L63	3	14.38	28.8	30	11,540 BTU	1/2"	7/8"	223 LBS.

RECEIVER CAPACITY @ 90% FULL: 14.0H

**EVAPORATOR COIL**  
208-230/60/1ø

SPECIFICATIONS										
MODEL #	QTY. MOTORS	AIR FLOW (CFM)	ELECTRICAL DATA				LINE SIZES			APPROX. NET WEIGHT
			FANS		HEATER		INLET	SUCTION	DRAIN	
			AMPS	WATTS	AMPS	WATTS				
TKL-1201	3	2100	1.5	177	11.7	2700	1/2" DD	7/8" DD	3/4" MPT	60 LBS.

1/4" DD EXTERNAL EQUALIZER CONNECTION W/EC MOTORS



MOH031L63 W/ TKL-1201  
208-230/60/3ø



Mid-South Industries, Inc. • P.O. Box 989  
Laurel, Mississippi 39441 • Phone 601/649-4600  
FAX 601/649-0598

/nh Rev.9-14-11

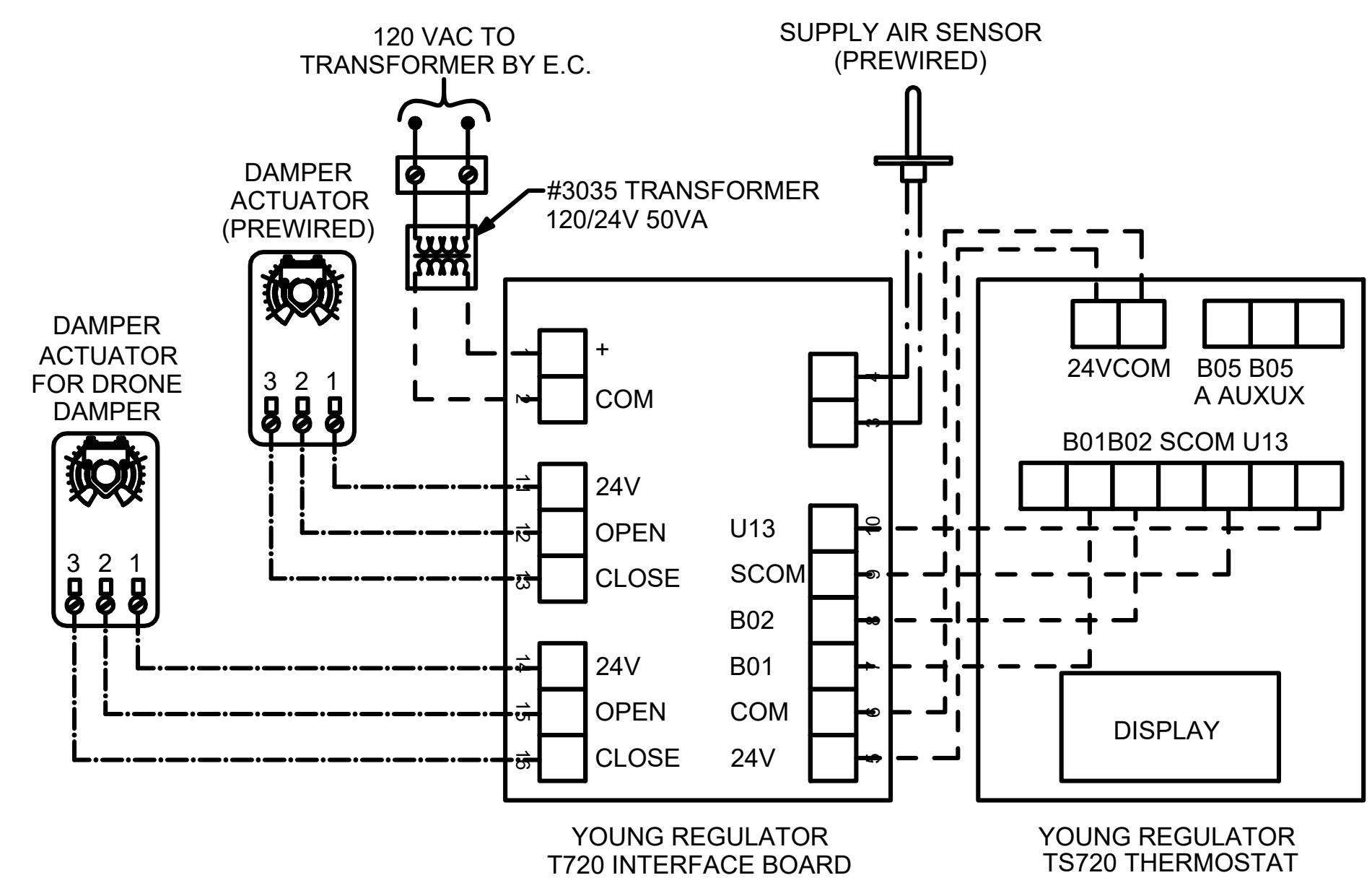
**2 WALK-IN FREEZER MECHANICAL EQUIPMENT DETAIL**  
NTS

FOR CONSTRUCTION

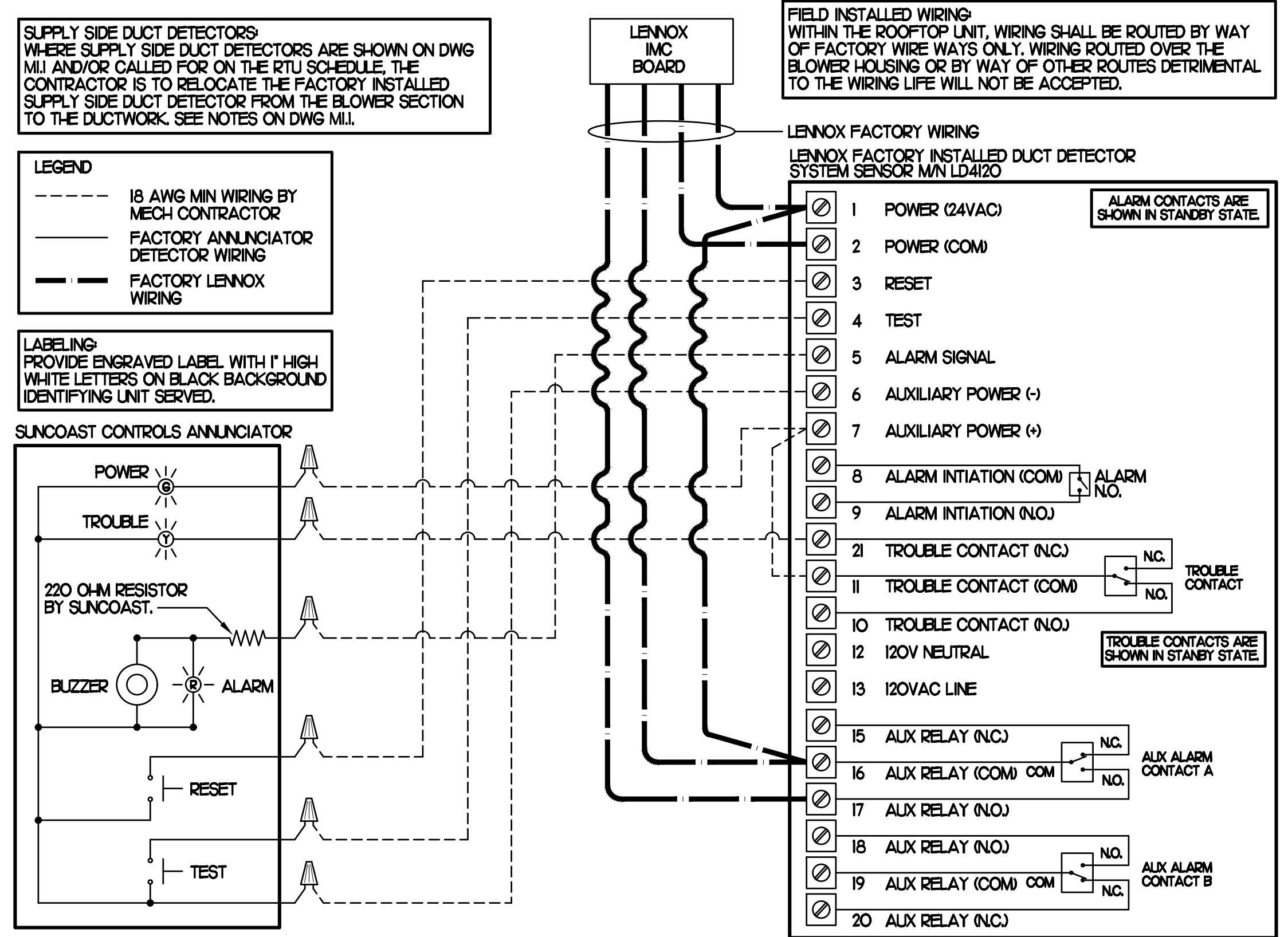
FOR CONSTRUCTION

- NOTES**
- SEE DWG M-1.1 FOR COMPONENT MODEL NUMBERS AND ORDERING INFORMATION.
  - 120V POWER FOR TRANSFORMER TO BE NON SWITCHED AND LIVE 24 HOURS EACH DAY.
  - PROVIDE ALL NECESSARY WIRING AND COMPONENTS TO MAKE CONTROL AND POWER CONNECTIONS TO TRANSFORMER, ZONE DAMPER, AND THERMOSTAT PER MANUFACTURER'S IOM.
  - PROVIDE MYLAR LABEL AT ALL NEW THERMOSTATS WITH 1/4" HIGH WHITE LETTERING ON BLACK BACKGROUND, I.E. "VESTIBULE THERMOSTAT". PLACE LABELS ON WALL ADJACENT TO DEVICE. DO NOT APPLY DIRECTLY ON DEVICE.

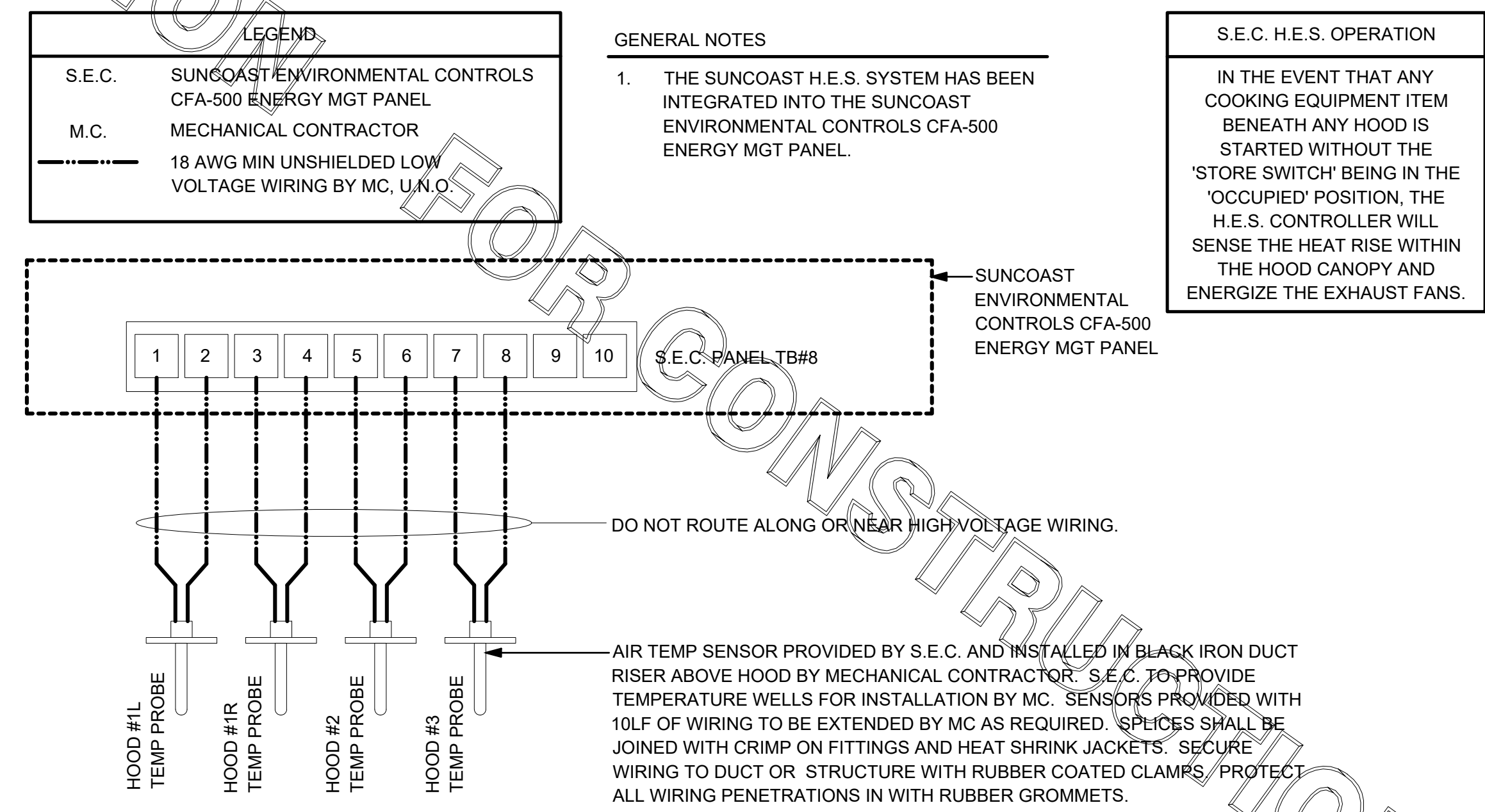
LEGEND	SEQUENCE OF OPERATION
M.C. MECHANICAL CONTRACTOR	<ol style="list-style-type: none"> <li>WHEN THE SUPPLY AIR TEMPERATURE IS LESS THAN 72F THE DAMPER WILL MODULATE ON A RISE IN SPACE TEMPERATURE ABOVE THE SETPOINT.</li> <li>WHEN THE SUPPLY AIR TEMPERATURE IS GREATER THAN 71F THE DAMPER WILL MODULATE ON A FALL IN SPACE TEMPERATURE BELOW THE SETPOINT.</li> </ol>
E.C. ELECTRICAL CONTRACTOR	
- - - 18 AWG MIN WIRING BY M.C.	
— HIGH VOLTAGE BY E.C.	
- · - FACTORY WIRING	



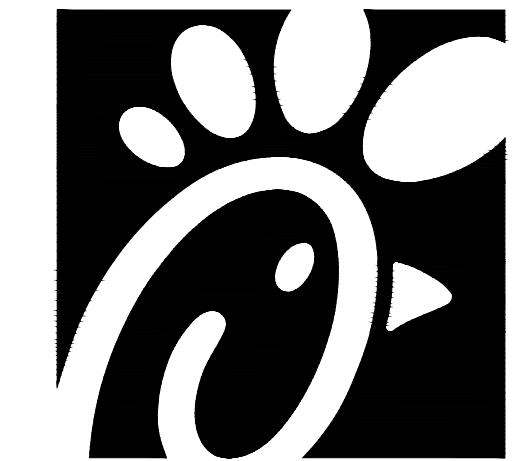
**2 OFFICE VAV DAMPER AND TSTAT**  
NO SCALE



**1 SMOKE DETECTOR AND ANNUNCIATOR WIRING DIAGRAM - LENNOX**  
NO SCALE

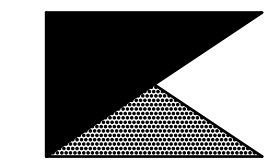


**3 HOOD FAN INTERLOCK WIRING - CFA500 INTEGRATED**  
NONE



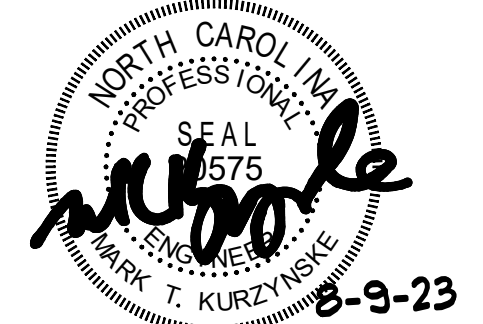
*Chick-fil-A*

**Chick-fil-A**  
5200 Buffington Road  
Atlanta, Georgia 30349



**Kurzynske & Associates**  
CONSULTING ENGINEERS  
2705 Lebanon Pike - Suite One  
Nashville, Tennessee 37214  
Telephone: (615) 255-5203

Kurzynske & Associates License  
No. F-0823, Expires 12/31/23



**CHICK-FIL-A**  
NORTHLAKE PARKWAY  
8411 NORTHLAKE COMMONS BLVD  
CHARLOTTE, NC 28216-2268

**FSR#01890**  
BUILDING TYPE / SIZE: S03 A LRG  
RELEASE: 22.05

REVISION SCHEDULE		
NO.	DATE	DESCRIPTION
2	07/07/23	Site and Building Modification

CONSULTANT PROJECT # 23047.HF.R  
PRINTED FOR CONSTRUCTION  
DATE 04/14/2023  
DRAWN BY AK

Information contained on this drawing and in all digital files produced for above named project may not be reproduced in any manner without express written or verbal consent from authorized project representatives.  
SHEET  
HVAC CONTROLS

SHEET NUMBER  
**M4.1**

**CONSTRUCTION**