

KEY NOTES

- ① MOUNT REMOTE SENSOR ON WALL AT 5'-0" AFF AND ROUTE WIRING BACK TO SUNCOAST TEMP CONTROL PANEL. FOR AC#2, LOCATE SENSOR 1'-0" BELOW CEILING.
- ② C.J.#4 MOUNTED INSIDE CABINERY SERVING SCJ PLENUM, SEE DETAIL 2/M2-1.
- ③ BRANCH TAKE-OFFS ARE NOT TO BE LOCATED CLOSER THAN 3'-0" FROM ANY ELBOW INCLUDING THE SUPPLY AIR DROP FROM CURB.
- ④ TRANSITION IN VERTICAL DROP FROM FULL SIZE OF CURB OPENING TO SIZE SHOWN, PROVIDE TURNING VANES IN ELBOW.
- ⑤ TRANSITION IN VERTICAL DROP FROM FULL SIZE OF CURB OPENING TO SIZE SHOWN WITHIN CURB, TERMINATE DROP 0'-6" ABOVE CEILING.
- ⑥ R/A DUCT DROP TO BE FULL SIZE OF CURB CONNECTION, TERMINATE DROP 0'-6" ABOVE CEILING.
- ⑦ MOUNT LENNOX HUMIDITY SENSOR ON WALL ABOVE SPACE TEMP SENSOR AND ROUTE WIRING TO UNIT ON ROOF.
- ⑧ LOCATE A MINIMUM OF 10 FT FROM PARAPETS. SEE DETAIL 3/M3-1 FOR ORIENTATION OF HINGE SIDE OF FAN ON CURB.
- ⑨ 10X10 DUCT DOWN.
- ⑩ MOUNT REMOTE SENSOR FOR PLAYGROUND 10'-4" AFF, ROUTE WIRING BACK TO SUNCOAST TEMP CONTROL PANEL.
- ⑪ EXTEND 60X16 RETURN DUCT HORIZONTALLY BELOW STRUCTURE TO ACCOMMODATE (3) 14" START COLLARS ON SIDE.
- ⑫ MECHANICAL CONTRACTOR TO ADJUST PATTERN DEFLECTORS TO THROW STRAIGHT DOWN.
- ⑬ AIR CURTAIN MOUNTED OVER DOOR HEADER AT 7'-5" AFF TO BOTTOM OF UNIT. LOCATE MAGNETIC CONTACT TYPE MICROSWITCH IN DOOR FRAME ON STRIKE SIDE.
- ⑭ SEE ELEVATIONS ON M-21 FOR C.J. FAN DUCTING REQUIREMENTS.
- ⑮ TRANSITION IN VERTICAL DROP FROM FULL SIZE OF CURB OPENING TO SIZE SHOWN, NO TURNING VANES IN ELBOW.
- ⑯ 18X32 VERTICAL DROP, PROVIDE TURNING VANES IN ELBOW, ELBOW TO BE PARTIALLY LOCATED WITHIN STRUCTURE, BOTTOM OF ELBOW TO BE AT SAME ELEVATION AS BOTTOM OF 32X18 SUPPLY MAIN. 32X18 SUPPLY MAIN TO BE LOCATED ENTIRELY BELOW JOISTS. HOLD 32X18 SUPPLY MAIN AS HIGH AS POSSIBLE DUE TO LIMITED CLEARANCE.
- ⑰ 16X18 VERTICAL DROP, PROVIDE TURNING VANES IN ELBOW, 18X16 SUPPLY MAIN TO BE LOCATED ENTIRELY BELOW JOISTS. HOLD 18X16 SUPPLY MAIN AS HIGH AS POSSIBLE DUE TO LIMITED CLEARANCE.
- ⑱ SEE DETAIL 5/M3-1 FOR TEE AND SPLITTER DAMPER CONSTRUCTION.

GREASE ACCESS DOOR SCHEDULE

MARK	OPENING SIZE	DOOR SIZE	REMARKS
A	7.5H X 14W	9.5H X 16W	1
B	5.5H X 14W	7.5H X 16W	1
C	6.5H X 14W	8.5H X 16W	1

D ACCESS DOORS SHALL BE LISTED 1978 LISTED OR FIELD FABRICATED, REQUIRE NO TOOLS FOR REMOVAL AND MEET THE REQUIREMENTS OF THE CURRENT EDITION OF THE IMC. ACCESS DOOR ASSEMBLY SHALL BE WELDED IN PLACE TO THE GREASE EXHAUST DUCT AND THE ACCESS DOOR SHALL BE SECURED WITH THUMB SCREWS. ACCESS DOORS SHALL BE SEALED WITH A MINIMUM 1500 DEGREE GASKET MATERIAL EQUIVALENT TO THAT MANUFACTURED BY BRETON INDUSTRIES, INC (800) 382-2491.

AIR BALANCE SCHEDULE

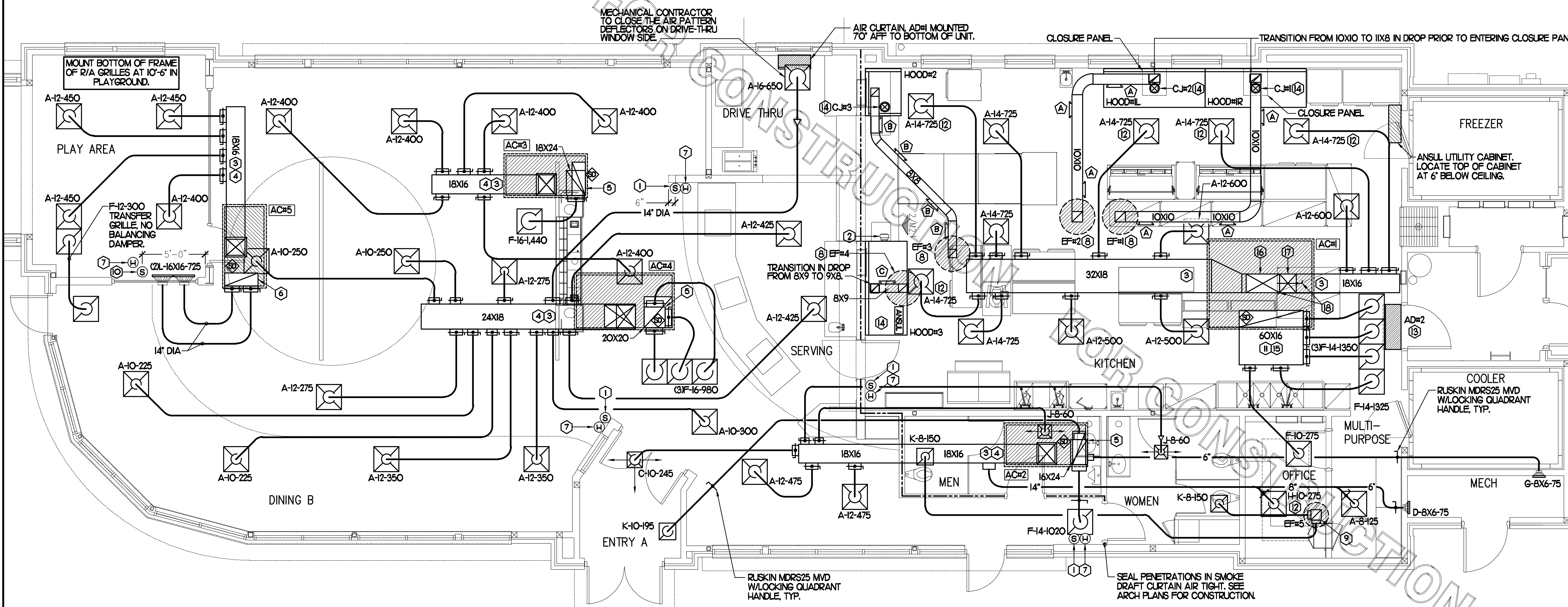
AIR TYPE	TOTAL CFM
SUPPLY	17,540
RETURN	12,770
EXHAUST	3,975
OUTSIDE AIR	4,770
BUILDING POSITIVE PRESSURE	795

LEGEND

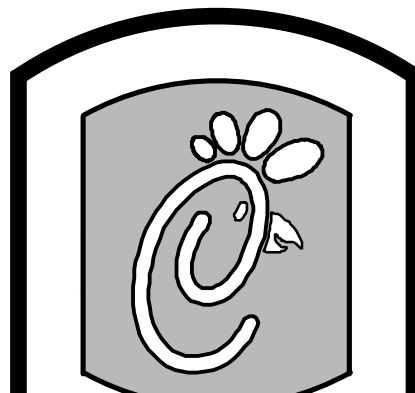
A-12-400	TYPE - NECK SIZE - CFM	EF#	EXHAUST FAN # (TYP)
	SPIN-IN FITTING WITH MANUAL BALANCING DAMPER, WITHOUT SCOOP	ACH#	AIR CONDITIONING UNIT # (TYP)
	SPIN-IN HARD Φ FLEXIBLE Φ DIFFUSER		RETURN EXHAUST (TYP)
	REMOTE TEMPERATURE SENSOR		SUPPLY DIFFUSER, SQ FACE (TYP)
	HUMIDITY SENSOR		PLAN NOTE REFERENCE
	SMOKE DETECTOR		MANUAL VOLUME DAMPER
12X18	DUCT SIZE (REVERSE FOR ELEVATION VIEWS) 1ST NUMBER - HORIZONTAL DIMENSION 2ND NUMBER - VERTICAL DIMENSION		DIRECTION OF THROW ON DIFFUSER

SHEET NOTES

- ① DUCT SIZES SERVING DIFFUSERS AND GRILLES ARE SAME SIZE AS DIFFUSER OR GRILLE NECK UNLESS NOTED OTHERWISE.



I MECHANICAL FLOOR PLAN
1/4" = 1'-0"



5200 Buffington Rd.
Atlanta Georgia,
30349-2998

Revisions:
Mark Date By

△

Mark Date By

△

Mark Date By

△

Seal



BENNER ENGINEERING, LLC
3000 Langford Road
Building 2-10
Norcross, GA 30071
(770) 729-1422 bus
(770) 729-0490 fax
contact@BennerEng.com
NC MECH ENGR PE# 22668

STORE: 2795
Chick-Fil-A
FSU S08N144

KAHN DR & JACKSON CT
LUMBERTON, NC 28358

SHEET TITLE
MECHANICAL
FLOOR PLAN

VERSION: 6
ISSUE DATE: 1-2011

Job No. : 10084
Store : 2795
Date : 1/10/12
Drawn By : JL/RW
Checked By : RDB

Sheet
M-11

KITCHEN HOOD SYSTEMS NOTES

1. CHICK-FIL-A MAINTAINS A NATIONAL ACCOUNT WITH HALTON CO. FOR THE HOODS. CHICK-FIL-A WILL PURCHASE AND PROVIDE THE HOODS FOR INSTALLATION BY THE MECHANICAL CONTRACTOR. THE MECHANICAL CONTRACTOR SHALL BE RESPONSIBLE FOR RECEIVING THE HOODS. CONTACT HALTON CO. AT 270-237-5600 FOR MORE INFO.
2. THE FIRE SUPPRESSION SYSTEM SHALL CONSIST OF A COMPLETE WET ANSUL SYSTEM FURNISHED BY HALTON. THE HOOD SHALL BE FURNISHED PRE-PIPED BY HALTON.
3. THE R-102 ANSUL FIRE SUPPRESSION SYSTEM EXTERNAL TO THE HOODS SHALL BE INSTALLED IN ACCORDANCE WITH HOOD MANUFACTURER'S SHOP DRAWINGS BY AN AUTHORIZED ANSUL SYSTEM INSTALLER HIRED BY HALTON.
4. HOOD EX-HAUST DUCTWORK SHALL BE 16 GA. BLACK STEEL WITH CONTINUOUS LIQUID TIGHT WELD OF JOINTS & SEAMS.
5. TURNS IN GREASE EX-HAUST DUCTWORK SHALL BE LONG RADIUS TYPE, WITH A CENTERLINE RADIUS R-3W/2, NO EXCEPTIONS ALLOWED. NO MITERED FITTINGS ALLOWED.
6. ALL STAINLESS STEEL CLOSURE PANELS SHALL BE SUPPLIED BY HOOD MANUFACTURER AND INSTALLED BY THE MECHANICAL CONTRACTOR ACCORDING TO MANUFACTURER'S RECOMMENDATIONS.
7. SLOPE ALL GREASE EX-HAUST DUCT BACK TO HOOD AT 1/4" PER FOOT OF RUN.
8. WRAP NEW GREASE DUCT WITH UNIFRAX FIBERWRAP. INSULATION ON ACCESS DOORS SHALL BE INSTALLED ACCORDING TO MANUFACTURER'S INSTALLATION RECOMMENDATIONS. UNIFRAX FIBERWRAP PRODUCT USED SHALL MEET LOCAL CODE REQUIREMENTS.
9. SUPPORT HOOD#1L AND HOOD#1R FROM WALL AND STRUCTURE AS SHOWN ON HALTON SHOP DRAWINGS. ATTACHMENT TO WALL REQUIRES FIELD DRILLING OF SUPPORT ANGLE AT BACK OF HOODS. ATTACH HOOD TO WALL AT 16" INTERVALS ALONG FULL LENGTH OF HOOD. EACH WALL ATTACHMENT POINT MUST OCCUR AT A WALL STUD. ATTACHMENT HARDWARE TO BE #12-24 HEX HEAD SHEET METAL SCREW EQUAL TO TEXTRON SDS EDT265, LENGTH AS REQUIRED TO FULLY PENETRATE THE STUD. FRONT EDGE OF HOOD TO BE SUPPORTED FROM STRUCTURE WITH MIN. #4 ATR. SHEATH THE ATR WITH 300 SERIES STAINLESS STEEL TUBING. NO LETTERING OR MARKINGS ON TUBING. TUBING TO EXTEND THRU ACT CEILING. PROVIDE STAINLESS STEEL ESCUTCHEON AT CEILING PENETRATION.
10. SUPPORT HOOD#2 AND HOOD#3 WITH THREADED ROD AT EACH FACTORY SUPPORT POINT. EACH SUPPORT POINT MUST SUPPORT THE HOOD WEIGHT EQUALLY. ATTACH TO STRUCTURE AS DETAILED ON STRUCTURAL DRAWING S5-1.
11. JOIN HOODS #1L AND #1R TOGETHER WITH SAE GRADE 5 HARDWARE AS SHOWN ON HALTON SHOPS.

GREASE EX-HAUST DUCT CLEARANCE NOTE

CLEARANCES ABOVE CEILING ARE TIGHT. MECHANICAL CONTRACTOR TO FIELD VERIFY EXACT ROUTING AND CLEARANCES PRIOR TO FABRICATING GREASE EX-HAUST DUCT.

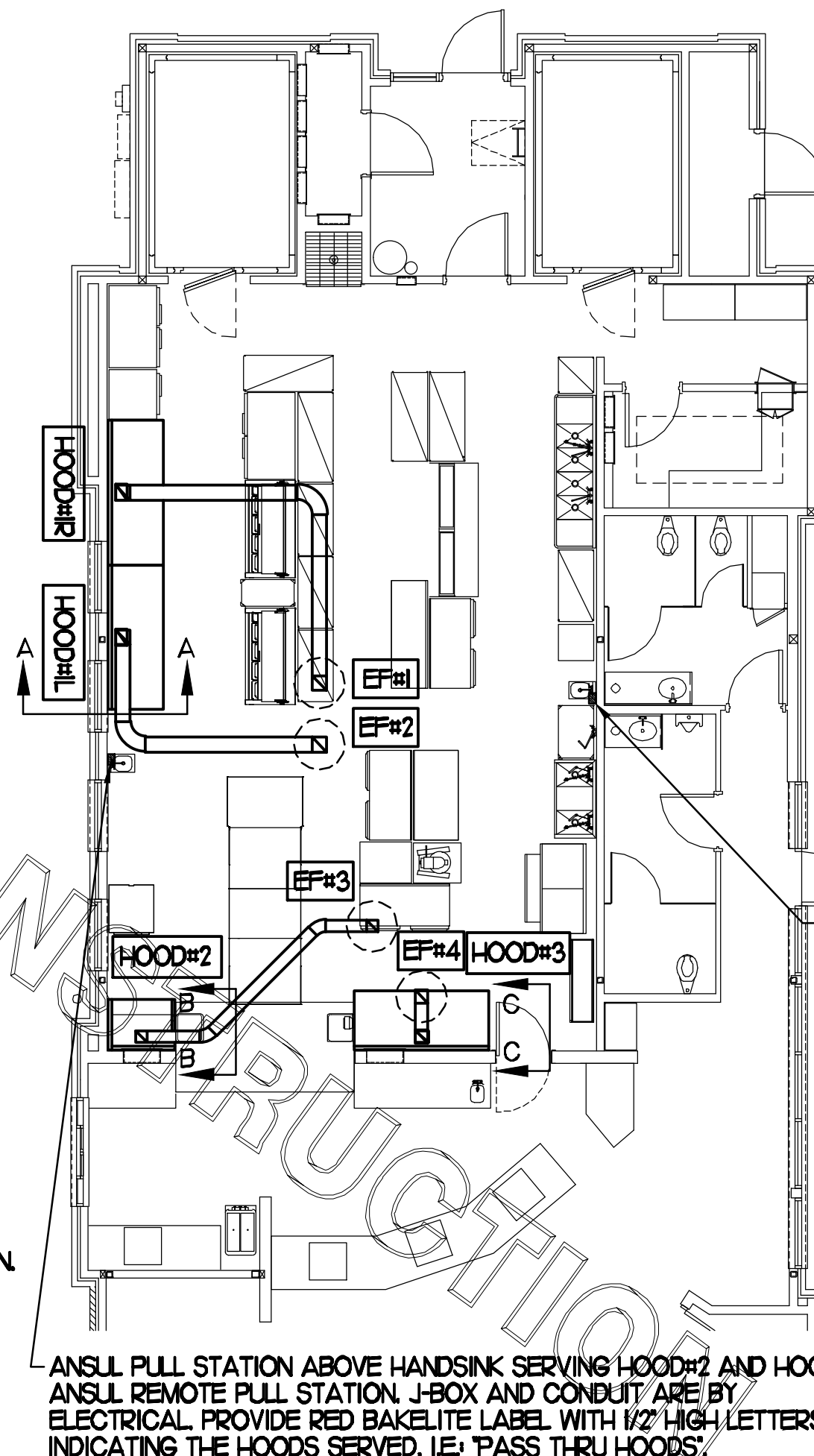
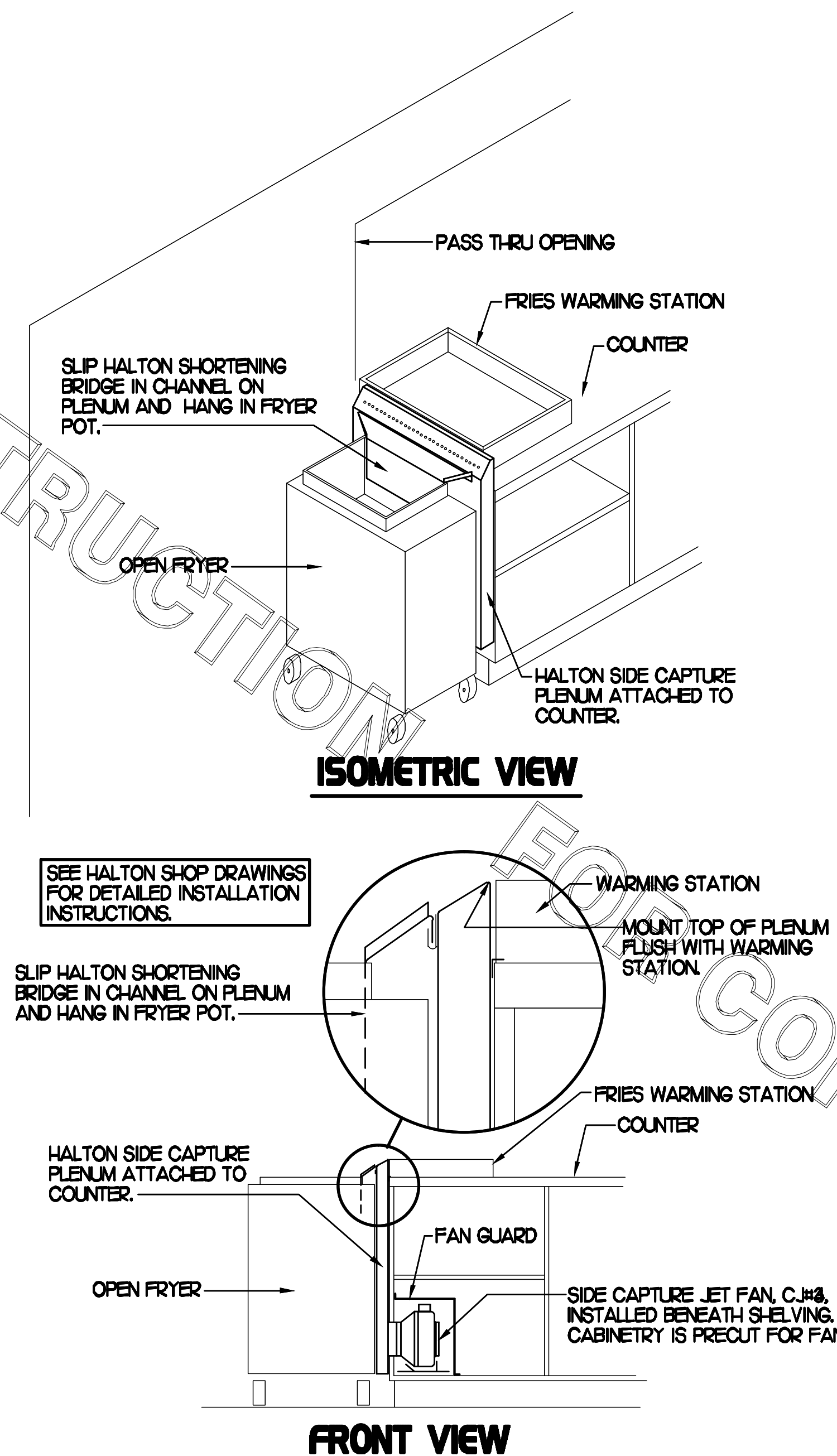
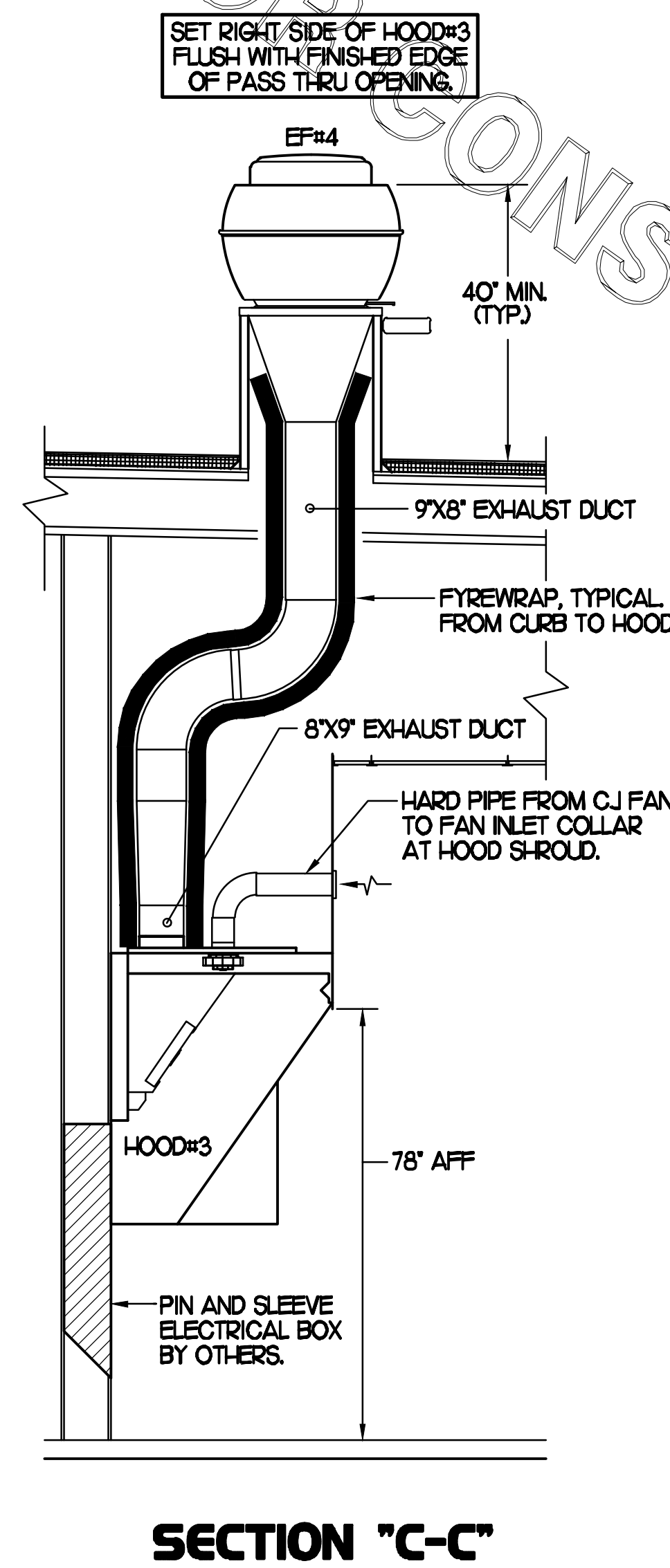
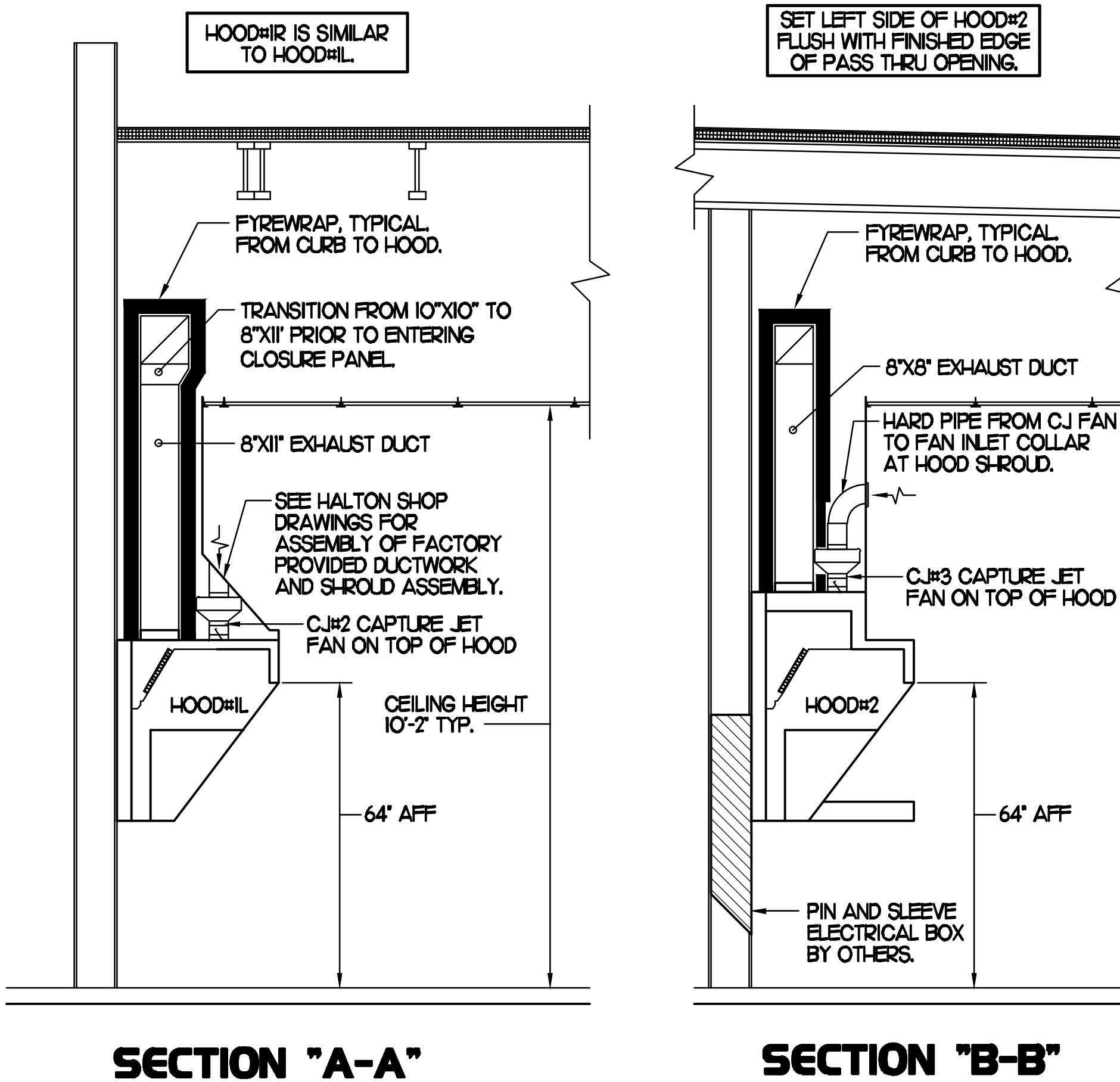
CLEANOUT DOOR NOTE

DUCT WRAP SHALL BE APPLIED TO THE CLEANOUT DOOR PER THE WRAP MFR'S INSTALLATION INSTRUCTIONS, NO EXCEPTIONS. ALSO, THE CLEANOUT DOOR MUST BE REMOVABLE WITHOUT TOOLS AND MUST BE CLEARLY AND PERMANENTLY LABELED.

HOOD SCHEDULE

MARK	EXHAUST CFM	SP * TAB PORT	CAPTURE JET CFM & SP.	TYPE	COLLAR SIZE	WIDTH	DEPTH	HEIGHT	MANUFACTURER	MODEL	REMARKS
HOOD#1R	1,085	0.17	73 * 0.30"	BACK SHELF	17X8"	97"	37"	38"	HALTON	KVL-2	1,4,5,7,13,19,20,21,22,23
HOOD#1L	1,085	0.17	73 * 0.30"	BACK SHELF	17X8"	97"	37"	38"	HALTON	KVL-2	1,4,5,7,10,13,19,20,21,23
HOOD#2	701	0.26	30 * 0.29"	BACK SHELF	8'X8"	45"	34"	48"	HALTON	KVL-C	1,2,4,8,9,10,11,13,16,18,19
HOOD#3	804	0.09	68 * 0.45"	CANOPY	9'X8"	90"	40"	49"	HALTON	KVM	1,3,4,6,8,12,14,15,16,17,19,22

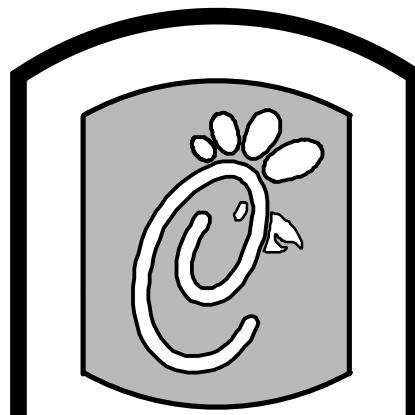
- NOTES: DIMENSIONS OF HOODS INCLUDE BACK AND SIDE SPACERS (HEIGHT DOES NOT INCLUDE CLOSURE PANELS).
- REMARKS:
1. STAINLESS STEEL CONSTRUCTION.
 2. PROVIDE FULL HEIGHT SS CLOSURE PANEL WITH ACCESS PANEL IN FRONT LARGE ENOUGH TO REMOVE CAPTURE JET FAN.
 3. PROVIDE FULL HEIGHT SS CLOSURE PANEL WITH ACCESS PANEL IN FRONT LARGE ENOUGH TO SERVICE ANSUL COMPONENTS AND TO REMOVE THE CAPTURE JET FAN.
 4. PROVIDE PRE-PIPED ANSUL R-102 WET FIRE EXTINGUISHING SYSTEM.
 5. PROVIDE UTILITY CABINET TO ENCLOSE REMOTE WALL MOUNTED ANSUL COMPONENTS FOR HOOD#1L AND HOOD#1R.
 6. ANSUL CABINET AND COMPONENTS ABOVE HOOD ON LEFT SIDE.
 7. PROVIDE 3" BACK SPACER.
 8. PROVIDE 3" CUSTOM BACK SPACER TO ACCOMMODATE PIN AND SLEEVE ELECTRICAL BOX.
 9. PROVIDE 3" RIGHT SIDE SPACER.
 10. PROVIDE NOTCHED LEFT END SIDE PANEL.
 11. PROVIDE 3'X3' HORIZONTAL AND VERTICAL TRIM ANGLE FOR RIGHT SIDE OF HOOD TO FINISH OFF GAP AT WALL.
 12. PROVIDE SIDE SHIELD ON LEFT END.
 13. PROVIDE TOP PLENUM CAPTURE JET FAN, SPEED CONTROLLER AND COLLAR.
 14. PROVIDE COUNTER MOUNTED SIDE CAPTURE JET PLENUM ASSEMBLY AND FAN ON RIGHT SIDE OF HOOD.
 15. PROVIDE FACTORY INSTALLED CAPTURE JET FAN IN PLENUM.
 16. PROVIDE CAPTURE JET AIR INLET AND COLLAR AT FRONT OF CLOSURE PANEL.
 17. PROVIDE PIN AND SLEEVE ELECTRICAL BOX (SINGLE CONNECTION). SEE ARCHITECTURAL AND ELECTRICAL DRAWINGS FOR ADDITIONAL INFORMATION.
 18. PROVIDE PIN AND SLEEVE ELECTRICAL BOX (DOUBLE CONNECTION). SEE ARCHITECTURAL AND ELECTRICAL DRAWINGS FOR ADDITIONAL INFORMATION.
 19. PROVIDE EQUIPMENT I.D. LABELS LOCATED ON FRONT LEADING EDGE OF HOOD.
 20. PROVIDE SLOPED FALSE TOP AND DUCT ENCLOSURE.
 21. PROVIDE FACTORY WALL MOUNTING ANGLE AT TOP OF HOOD.
 22. PROVIDE NOTCHED RIGHT END SIDE PANEL.
 23. PROVIDE CONTINUOUS CAPTURE INTERNAL END CUTOFF.



3 HOOD ELEVATIONS

2 HALTON SIDE CAPTURE JET PLENUM

1 HOOD LAYOUT



5200 Buffington Rd.
Atlanta Georgia,
30349-2998

Revisions:

Mark	Date	By
△		
△		
△		



BENNER ENGINEERING, LLC
3000 Langford Road
Building 24-0
Norcross, GA 30071
(770) 729-1422 bus
(770) 729-0490 fax
contact@bennereng.com

STORE: 2795
Chick-Fil-A
FSU S08N144

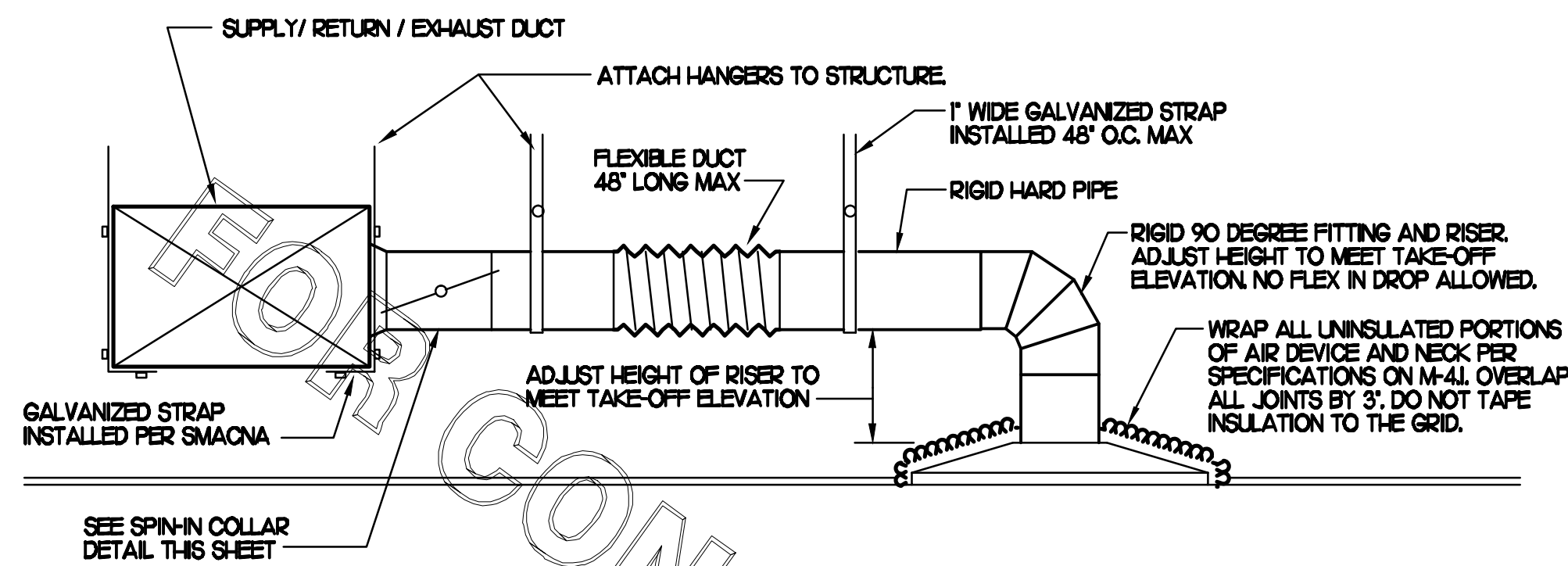
KAHN DR & JACKSON CT
LUMBERTON, NC 28358

SHEET TITLE
HOOD DETAILS
& SCHEDULES

VERSION: 6
ISSUE DATE: 1-2011

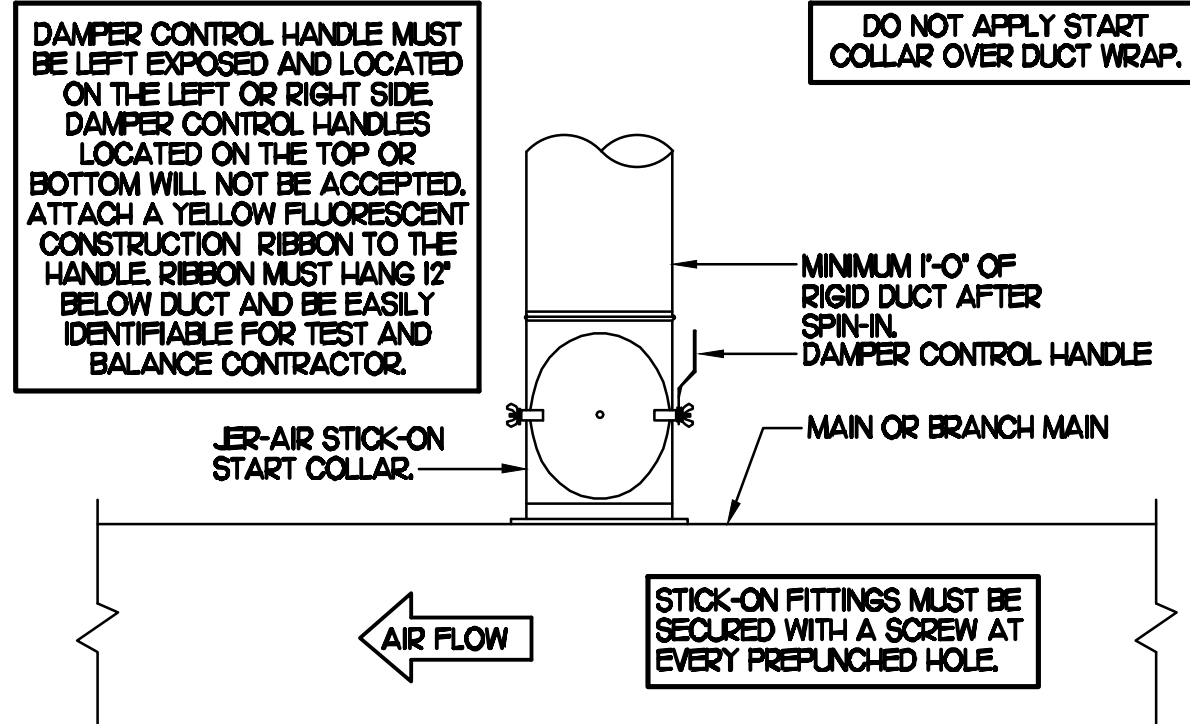
Job No. : 10084
Store : 2795
Date : 1/10/12
Drawn By : JL/RW
Checked By : RDB

Sheet
M-2.1



1 SAG/RAG/GRILLE TAKE-OFF
NO SCALE

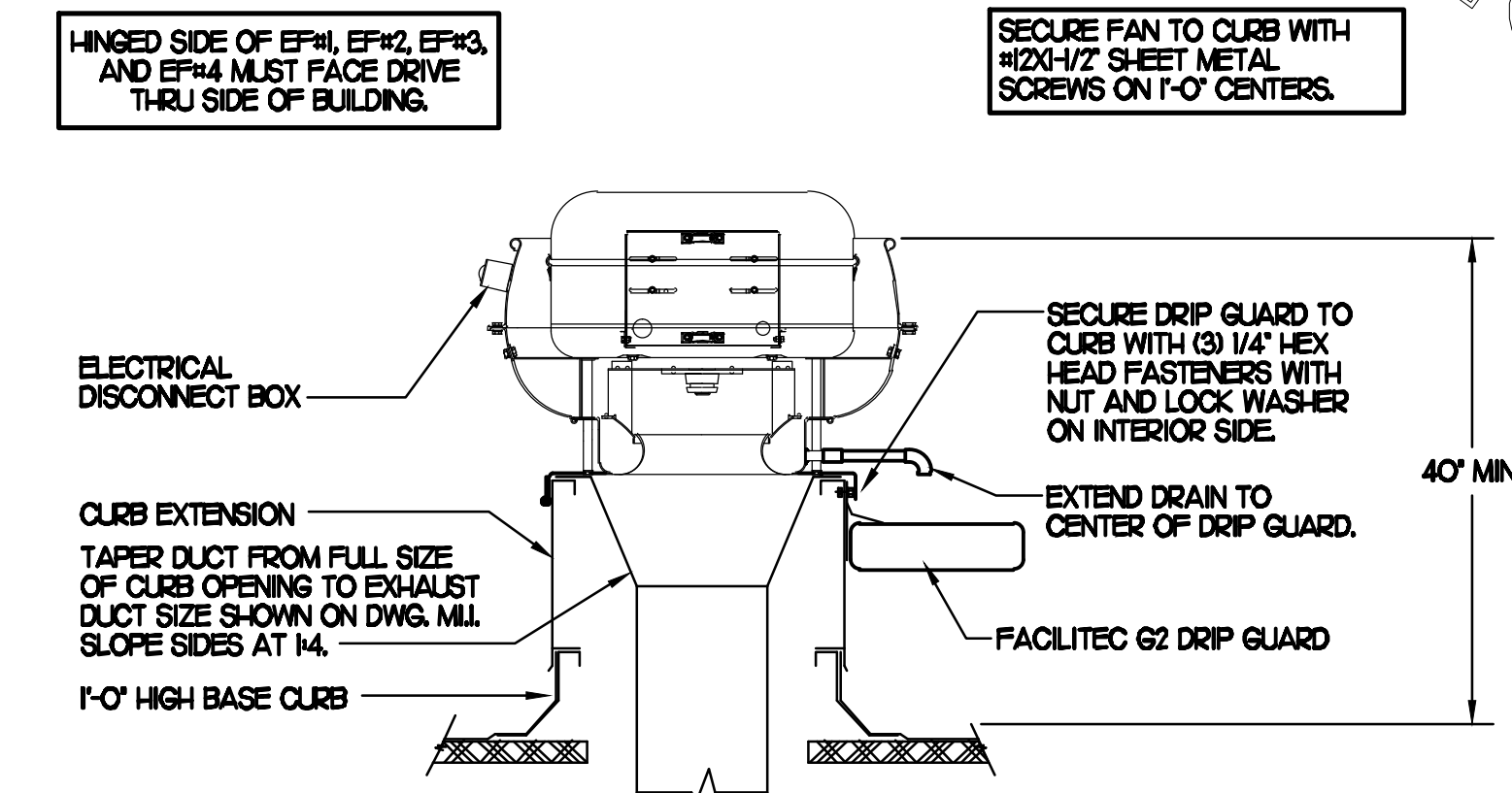
CHICK-FIL-A HAS A NATIONAL ACCOUNT WITH TOM BARROW COMPANY FOR THE JER-AIR START COLLARS. THE MECHANICAL CONTRACTOR IS REQUIRED TO PURCHASE THE JER-AIR START COLLARS DIRECTLY FROM TOM BARROW COMPANY. CONTACT MR. SCOTT GEORGE AT 404-351-0100 FOR PRICING AND AVAILABILITY. JER-AIR START COLLARS NOT PURCHASED THRU TOM BARROW COMPANY WILL NOT BE ACCEPTED.



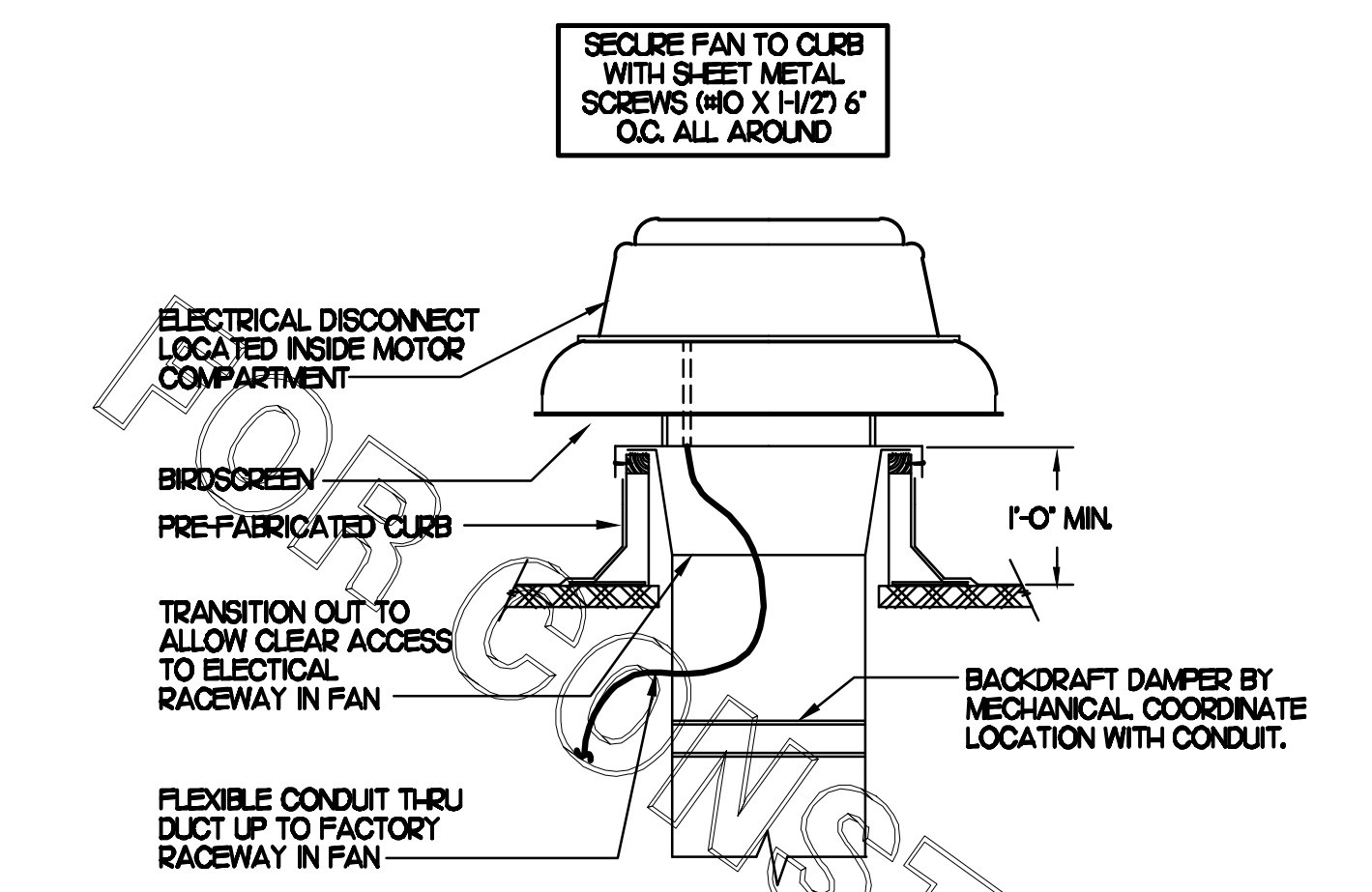
2 START COLLAR
NO SCALE

GAS FIRED ROOFTOP UNIT SCHEDULE											
MARK	COOLING CAPACITY (MBH)		HEATING CAPACITY (MBH)		FAN SECTION (CFM)			MODEL	MANUFACTURER	REMARKS	
	TOTAL	SENS	INLET	OUTPUT	SUPPLY	O.A.	ESP				
ACH	2945	2268	4800	3840	8000	2350	75	10	LGH-80084	LENNOX	135,689/10/12/13/14/5
AC2	633	475	1500	1200	1790	500	1	.65	LGH-06044	LENNOX	235,789/10/12/13/14/5
AC3	633	475	1500	1200	2000	560	1	.65	LGH-06044	LENNOX	235,789/10/12/13/14/5
AC4	1244	896	2400	1920	4000	1060	5	.65	LGH-20044	LENNOX	235,789/10/12/13/14/5
AC5	633	475	1500	1200	1790	300	1	.65	LGH-06044	LENNOX	345,890/10/12/13/14/5
NOTES	<ul style="list-style-type: none"> COOLING CAPACITIES ARE GROSS, BASED ON INDOOR 80°FDB/67°FWB, OUTDOOR 95°FDB, AND 400 CFM PER TON. CHICK-FIL-A MAINTAINS A NATIONAL ACCOUNT FOR EQUIPMENT WITH LENNOX CORPORATION. CONTACT LENNOX NATIONAL ACCOUNTS AT 972-497-6299 (OR BY FAX AT 972-497-5122) FOR PRICING, ORDERING AND AVAILABILITY. MECHANICAL CONTRACTOR TO VERIFY LENNOX SUBMITTAL WITH CONSTRUCTION DOCUMENTS. 										
REMARKS	<ol style="list-style-type: none"> PROVIDE DIFFERENTIAL ENTHALPY ECONOMIZER WITH POWER EXHAUST. PROVIDE DIFFERENTIAL ENTHALPY ECONOMIZER WITH BAROMETRIC EXHAUST. PROVIDE 14\"/> 										

EXHAUST FAN SCHEDULE										
MARK	CFM	ESP	RPM	TIP SPEED (FPM)	HP	AREA SERVED	MODEL	MANUFACTURER	REMARKS	
EF#1	1085	.75	1071	4,626	1/2	HOOD#R	165VH-B	LOREN COOK	123,45	
EF#2	1085	.75	1071	4,626	1/2	HOOD#L	165VH-B	LOREN COOK	123,45	
EF#3	701	.75	1238	4,861	1/4	HOOD#2	150VH-B	LOREN COOK	123,45	
EF#4	804	.75	1295	5,085	1/4	HOOD#3	150VH-B	LOREN COOK	123,45	
EF#6	300	.375	1294	3,091	1/8	RESTROOMS	ACED-ROCE5DH	LOREN COOK	267,8910	
NOTES	<ul style="list-style-type: none"> GREASE EXHAUST FAN RPM BASED ON 80 DEGREE F AIR AT 1000 FEET ABOVE SEA LEVEL. GREASE EXHAUST FANS TO BE UL 762 LISTED. CHICK-FIL-A HAS A NATIONAL ACCOUNT WITH TOM BARROW COMPANY FOR THE FAN/CLUBB PACKAGE. THE MECHANICAL CONTRACTOR IS REQUIRED TO PURCHASE THE FAN/CLUBB PACKAGE DIRECTLY FROM TOM BARROW COMPANY. CONTACT MR. SCOTT GEORGE AT 404-351-0100 FOR PRICING AND AVAILABILITY. FANS AND CLUBS NOT PURCHASED THRU TOM BARROW COMPANY WILL NOT BE ACCEPTED. 									
REMARKS	<ol style="list-style-type: none"> PROVIDE FACTORY 1\"/> 									

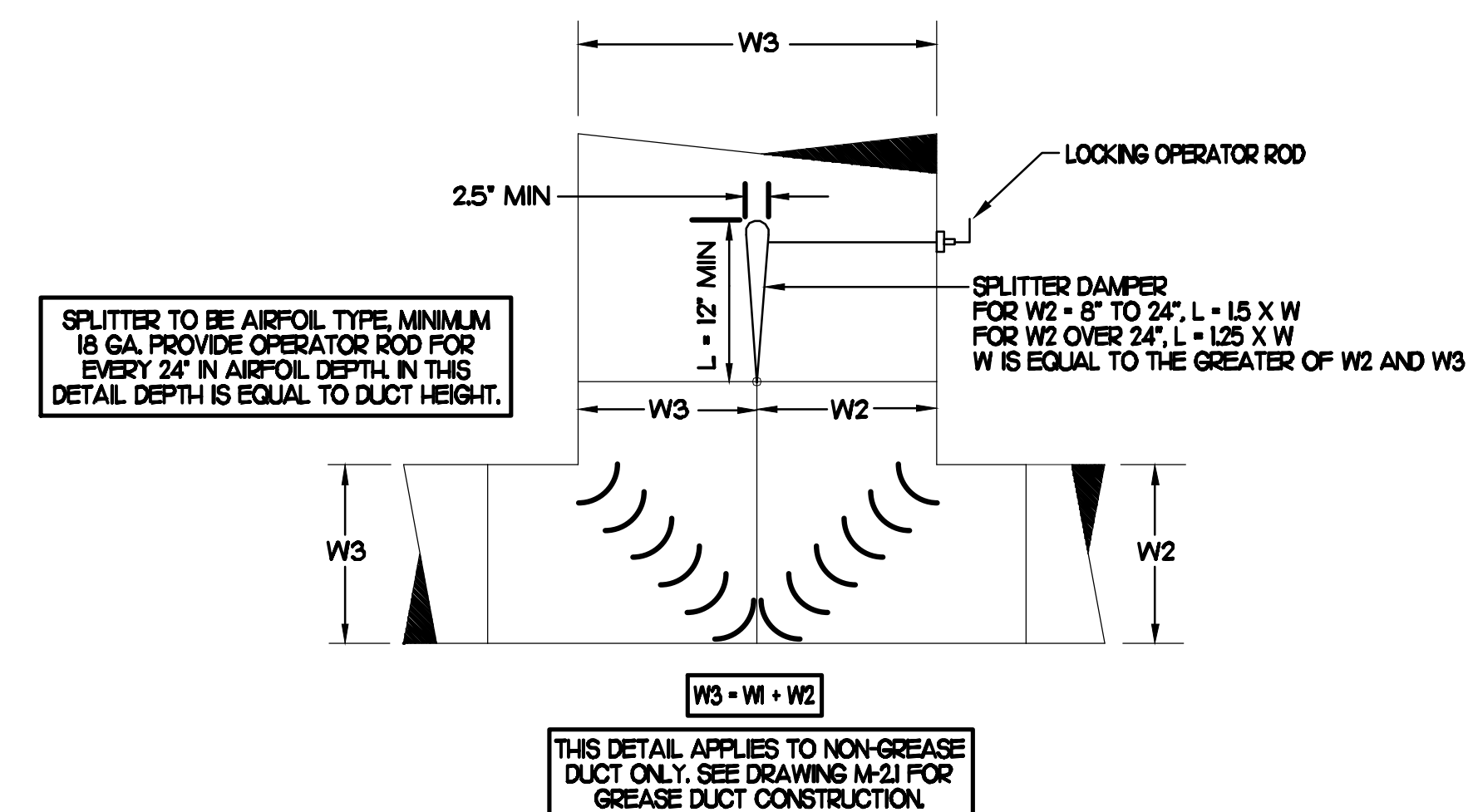


3 KITCHEN HOOD EXHAUST FAN
NO SCALE



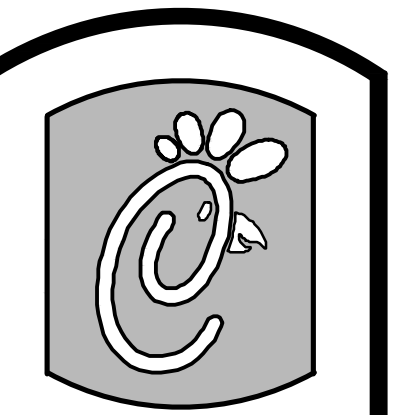
4 RESTROOM EXHAUST FAN
NO SCALE

AIR DOOR SCHEDULE									
MARK	CFM	VELOCITY	HEATING CAP	HP	AREA SERVED	MODEL	MANUFACTURER	REMARKS	
AD#1	750	3,050	72 KW	1/5	DRIVE THRU	MP-30E	POWERED-AIRE	12	
AD#2	3,384	4,000	NA	3/4	REAR DOOR	BCT-142	POWERED-AIRE	3	
NOTES	<ul style="list-style-type: none"> CHICK-FIL-A HAS A NATIONAL ACCOUNT WITH TOM BARROW COMPANY FOR THE AIR DOORS. THE MECHANICAL CONTRACTOR SHALL PURCHASE THE AIR DOORS DIRECTLY FROM TOM BARROW COMPANY. CONTACT MR. SCOTT GEORGE AT 404-351-0100, FOR PRICING AND AVAILABILITY. AIR DOORS NOT PURCHASED THRU TOM BARROW COMPANY WILL NOT BE ACCEPTED. 								
REMARKS	<ol style="list-style-type: none"> FACTORY PROVIDED, WIRED, AND UNIT MOUNTED THERMOSTAT LOCATED ON RIGHT SIDE. FACTORY PROVIDED, WIRED, AND UNIT MOUNTED SPEED CONTROLLER LOCATED ON BOTTOM. FACTORY PROVIDED SECO-LARM SM-300 MAGNETIC CONTACT WITH FACTORY INSTALLED LOW VOLTAGE CONTROLS LOCATED IN AIR DOOR CABINET. 								



5 TEE CONSTRUCTION
NO SCALE

AIR DEVICE SCHEDULE							
MARK	DESCRIPTION	LOCATION	NECK SIZE	FACE SIZE	FRAME TYPE	REMARKS	
A	TITUS MODEL PSS-AA ALUMINUM SUPPLY AIR DIFFUSER WITH AIR PATTERN CONTROLLER.	DINING AREA KITCHEN	SEE PLAN	24X24	LAY-IN	18	
C	TITUS MODEL MCD STEEL SUPPLY AIR DIFFUSER FIELD ADJUSTABLE AIR PATTERN CONTROLLERS.	ENTRY 'A'	14X14	19X9	SURFACE	135,7	
D	TITUS MODEL 272FS DOUBLE DEFLECTION ALUMINUM SIDEWALL SUPPLY GRILLE. FRONT BLADE PARALLEL TO SHORT SIDE.	MECH-VELEC ROOM	8X6	10X8	SURFACE	1	
F	DONCO MODEL CPDF EGGRATE RETURN AIR GRILLE WITH REMOVABLE WHITE CORE, FACTORY FLAT BACKPAN AND ROUND NECK.	DINING/OFFICE KITCHEN PLAY AREA	SEE PLAN	24X24	LAY-IN	17	
G	TITUS MODEL 56FL ALUMINUM SIDEWALL RETURN GRILLE. FRONT BLADE PARALLEL TO LONG SIDE.	MECH-VELEC ROOM	8X6	10X8	SURFACE	1	
H	TITUS MODEL PSS-AA ALUMINUM SUPPLY AIR DIFFUSER WITH AIR PATTERN CONTROLLER.	OFFICE	10	24X24	LAY-IN	16,8	
J	TITUS MODEL MCD STEEL SUPPLY AIR DIFFUSER FIELD ADJUSTABLE AIR PATTERN CONTROLLERS.	RESTROOMS	10X10	15X5	SURFACE	123,5,7	
K	TITUS MODEL PAR STEEL PERFORATED FACE RETURN AIR GRILLE.	RESTROOMS ENTRY 'A'	14X14	16X6	SURFACE	14,7	
L	TITUS MODEL 56FL ZERO DEGREE DEFLECTION ALUMINUM SIDEWALL RETURN GRILLE. FRONT BLADE PARALLEL TO LONG SIDE.	PLAYGROUND	16X6	18X8	SURFACE	1	
NOTES	<ul style="list-style-type: none"> MECHANICAL CONTRACTOR SHALL PURCHASE THE AIR DEVICES DIRECTLY FROM TOM BARROW COMPANY. CONTACT MR. SCOTT GEORGE AT 404-351-0100, FOR PRICING AND AVAILABILITY. AIR DEVICES NOT PURCHASED THRU TOM BARROW COMPANY WILL NOT BE ACCEPTED. 						
REMARKS	<ol style="list-style-type: none"> STANDARD OFF WHITE FINISH. PROVIDE MODEL AG-85 NECK DAMPER. SEE DRAWING M11 FOR THROWN. PROVIDE MODEL AG-75 NECK DAMPER ON GRILLES IN RESTROOMS. FIELD FABRICATE 6\"/> 						



5200 Buffington Rd.
Atlanta Georgia,
30349-2998

Revisions:
Mark Date By

△

Mark Date By

△

Mark Date By

△



BENNER ENGINEERING, LLC
3030 Langford Road
Building 2-00
Norcross, GA 30071
(770) 729-1422 bus
(770) 729-0490 fax
contact@bennereng.com

STORE: 2795
Chick-Fil-A
FSU S08N144

KAHN DR & JACKSON CT
LUMBERTON, NC 28358

SHEET TITLE
HVAC DETAILS
& SCHEDULES

VERSION: 6
ISSUE DATE: 1-2011

Job No. : 10084
Store : 2795
Date : 1/10/12
Drawn By : JL/RW
Checked By : RDB

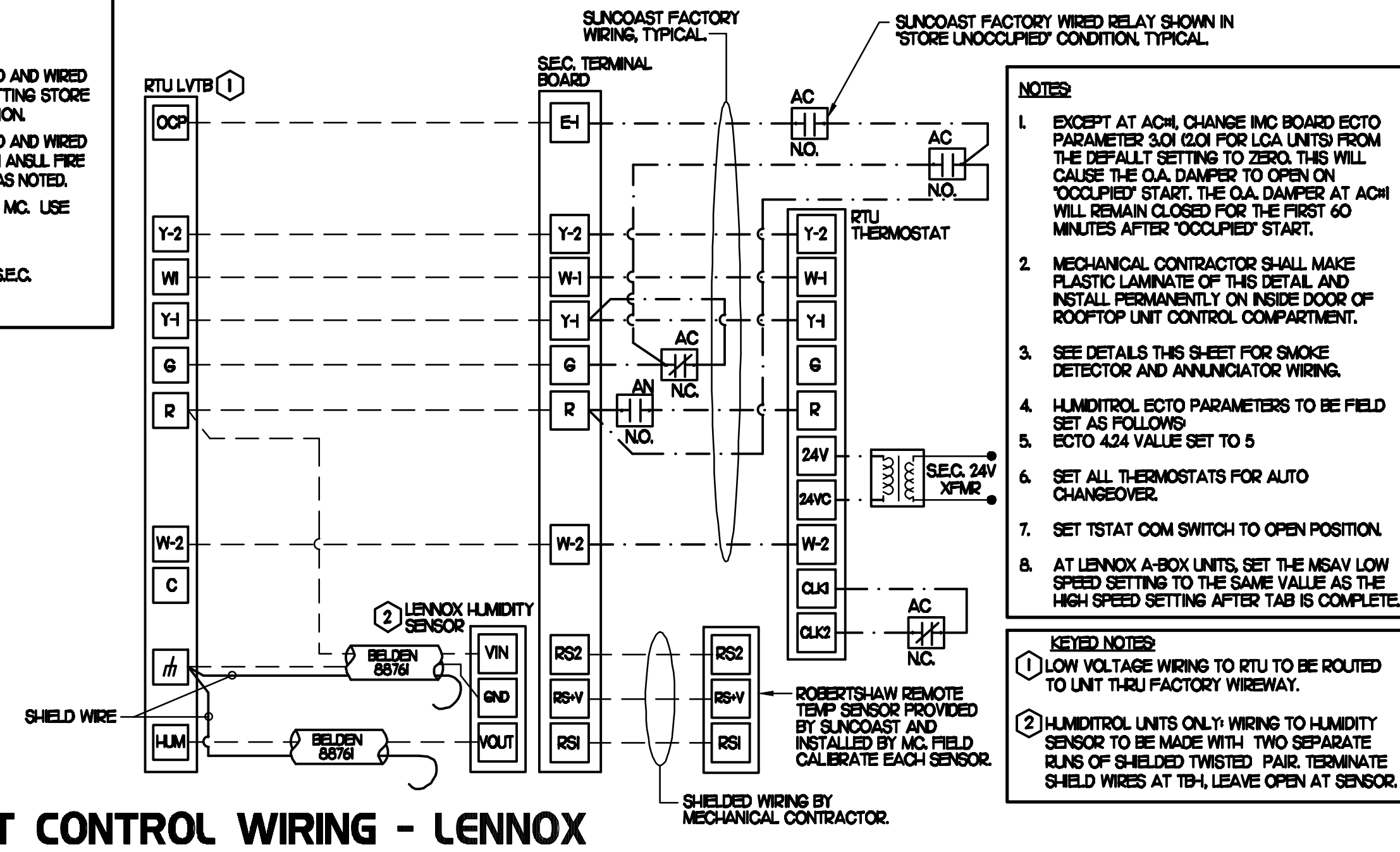
Sheet
M-3.I

PROVIDE A PROFESSIONALLY LAMINATED COPY OF THESE DETAILS TO BE INSTALLED INSIDE THE ROOFTOP UNIT CONTROL CABINET. USE A SETON CHART FRAME STYLE #57587, TELEPHONE NUMBER 800-243-8624, FOR MOUNTING THE DETAIL. ATTACH THE FRAME TO THE INTERIOR OF THE UNIT IN PLAIN AND EASY VIEW OF THE CONTROLS SECTION. CONTACT BENNOR ENGINEERING AT 770-728-1422 FOR A REPRODUCIBLE COPY OF THE DETAIL.

FOR CONSTRUCTION

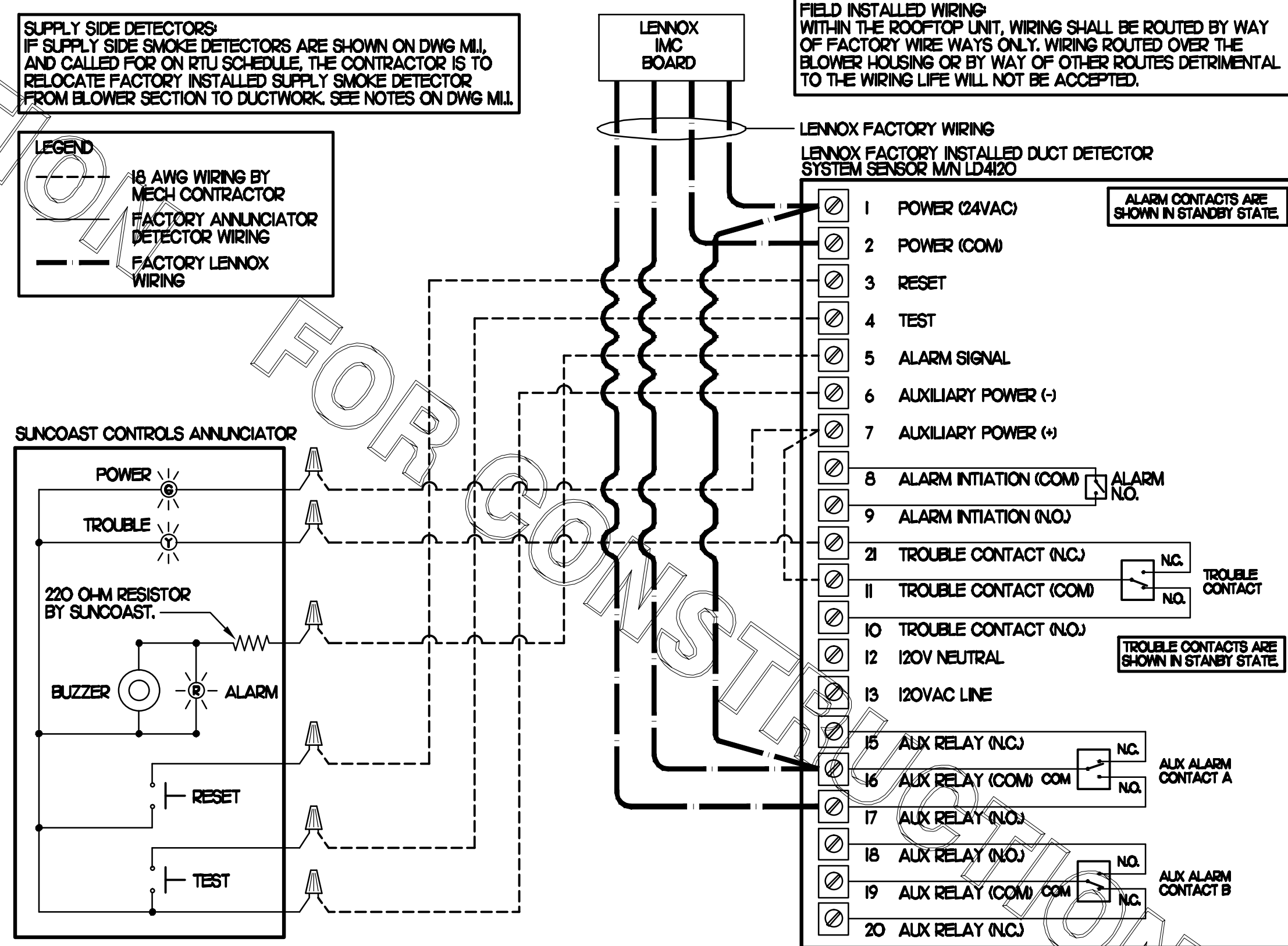
FOR CONSTRUCTION

- LEGEND**
- SEC. SUNCOAST ENVIRONMENTAL CONTROLS (SUPPLIER OF TEMP/FAN CONTROL PANEL LOCATED IN KITCHEN)
 - ① KEY NOTE REFERENCE
 - MC MECHANICAL CONTRACTOR
 - AC SUNCOAST RELAY FACTORY INSTALLED AND WIRED IN OPA-500 PANEL, ENERGIZED BY PUTTING STORE SWITCH IN 'STORE OCCUPIED' POSITION.
 - AN SUNCOAST RELAY FACTORY INSTALLED AND WIRED IN OPA-500 PANEL, ENERGIZED WHEN ANSL FIRE SUPPRESSION SYSTEM IS ACTIVATED, AS NOTED.
 - 18 GA. MIN LOW VOLTAGE WIRING BY MC. USE SHIELDED WIRING FOR SENSORS.
 - LOW VOLTAGE WIRING BY SEC.
 - LINE VOLTAGE BY ELECTRICIAN OR SEC.



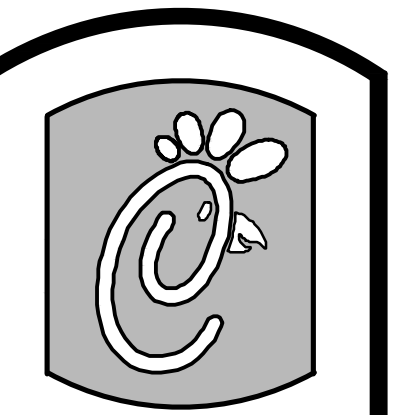
2 ROOFTOP UNIT CONTROL WIRING - LENNOX

NONE



1 SMOKE DETECTOR AND ANNUNCIATOR WIRING DIAGRAM - LENNOX

NO SCALE



Chick-fil-A

5200 Buffington Rd.
Atlanta Georgia,
30349-2998

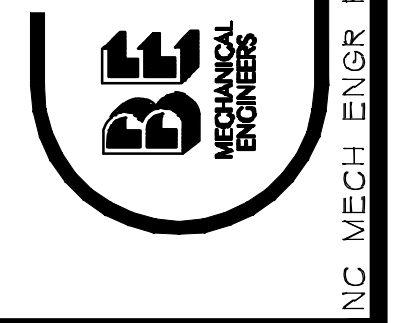
Revisions:

Mark	Date	By
△		
△		
△		

Seal



BENNOR ENGINEERING, LLC
3000 Langford Road
Building 2400
Norcross, GA 30071
(770) 728-1422, bus
(770) 728-0490, fax
contact@BennorEng.com



STORE: 2795
Chick-Fil-A
FSU S08N144

KAHN DR & JACKSON CT
LUMBERTON, NC 28358

SHEET TITLE
HVAC
CONTROLS

VERSION: 6
ISSUE DATE: 1-2011

Job No. : 10084
Store : 2795
Date : 1/10/12
Drawn By : JL/RW
Checked By : RDB

Sheet

M-4.1

NATIONAL ACCOUNTS

1. LENNOX EQUIPMENT - CONTACT LENNOX NATIONAL ACCOUNTS AT 972-497-6260 (OR BY FAX AT 972-497-5112) FOR PRICING, ORDERING AND AVAILABILITY. LENNOX EQUIPMENT NOT PURCHASED THRU LENNOX NATIONAL ACCOUNTS WILL NOT BE ACCEPTED.
2. LOREN COOK FAN AND CURB PACKAGE - THE MECHANICAL CONTRACTOR IS REQUIRED TO PURCHASE THE FAN/CURB PACKAGE DIRECTLY FROM TOM BARROW COMPANY. CONTACT MR. SCOTT GEORGE AT 404-351-0100 FOR PRICING AND AVAILABILITY. FANS AND CURBS NOT PURCHASED THRU TOM BARROW COMPANY WILL NOT BE ACCEPTED.
3. TITUS AIR DEVICES - THE MECHANICAL CONTRACTOR IS REQUIRED TO PURCHASE THE AIR DEVICES DIRECTLY FROM TOM BARROW COMPANY. CONTACT MR. SCOTT GEORGE AT 404-351-0100 FOR PRICING AND AVAILABILITY. AIR DEVICES NOT PURCHASED THRU TOM BARROW COMPANY WILL NOT BE ACCEPTED.
4. AIR DOORS - THE MECHANICAL CONTRACTOR IS REQUIRED TO PURCHASE THE AIR DOORS DIRECTLY FROM TOM BARROW COMPANY. CONTACT MR. SCOTT GEORGE AT 404-351-0100 FOR PRICING AND AVAILABILITY. AIR DOORS NOT PURCHASED THRU TOM BARROW COMPANY WILL NOT BE ACCEPTED.
5. SUNCOAST ENVIRONMENTAL CONTROLS - THE CFA 500 PANEL AND THE TEST/RESET STATIONS WILL BE PURCHASED AND PROVIDED BY THE ELECTRICAL CONTRACTOR AS A PART OF A NATIONAL ACCOUNT PACKAGE. SEE PART II PARAGRAPH 3A, 3D, AND 3E OF THE MECHANICAL SPECIFICATIONS FOR MORE INFORMATION.
6. HALTON HOODS - CHICK-FIL-A WILL PURCHASE AND PROVIDE THE HOODS FOR INSTALLATION BY THE MECHANICAL CONTRACTOR. THE MECHANICAL CONTRACTOR SHALL BE RESPONSIBLE FOR RECEIVING THE HOODS. CONTACT HALTON CO. AT 270-237-5600 FOR MORE INFO.
7. JER-AIR START COLLARS - THE MECHANICAL CONTRACTOR IS REQUIRED TO PURCHASE THE START COLLARS DIRECTLY FROM TOM BARROW COMPANY. CONTACT MR. SCOTT GEORGE AT 404-351-0100 FOR PRICING AND AVAILABILITY. START COLLARS NOT PURCHASED THRU TOM BARROW COMPANY WILL NOT BE ACCEPTED.

I. MECHANICAL SPECIFICATIONS

PART I GENERAL

1. IT IS THE RESPONSIBILITY OF CONTRACTOR TO READ ALL SPECIFICATIONS AND CONSULT ALL DRAWINGS WHICH MAY AFFECT THE INSTALLATION AND COORDINATION OF HIS WORK WITH OTHER TRADES. CONTRACTOR SHALL COORDINATE AND MAKE MINOR ADJUSTMENTS IN LOCATION OF EQUIPMENT AND MATERIALS AS NECESSARY TO SECURE COORDINATION.
2. COMPLETED INSTALLATION SHALL CONFORM TO ALL APPLICABLE FEDERAL, STATE AND LOCAL CODES AND ORDINANCES, INCLUDING BUT NOT LIMITED TO THE LATEST APPROVED EDITIONS OF NFPA-96, NFPA-90A, NFPA-54, SMACNA, ASHRAE 90J AND ASHRAE 62.
3. SYSTEM LAYOUT IS SCHEMATIC AND EXACT LOCATIONS SHALL BE DETERMINED BY STRUCTURAL CONDITIONS, COORDINATION WITH OTHER TRADES, COORDINATION WITH FINISHES AND OTHER CONDITIONS. STRUCTURAL SUPPORTS SHALL NOT BE CUT OR ALTERED TO ASSURE FIT OF HVAC SYSTEM. TEN FOOT CLEARANCE SHALL BE MAINTAINED BETWEEN OUTSIDE AIR INTAKES AND EXHAUST FANS AND PLUMBING VENT TERMINALS.
4. CONTRACTOR SHALL BE RESPONSIBLE FOR ALL DEFECTS, REPAIRS AND REPLACEMENTS IN MATERIALS AND WORKMANSHIP FOR A PERIOD OF ONE (1) YEAR AFTER FINAL PAYMENT IS APPROVED. CONTRACTOR SHALL HONOR FACTORY WARRANTIES ON ALL EQUIPMENT PROVIDED AS PART OF THIS SYSTEM.
5. UPON COMPLETION OF PROJECT, ALL SYSTEM EQUIPMENT AND MATERIALS SHALL BE IN NEW, CLEAN CONDITION WITH ALL DAMAGE RESTORED TO CONDITION ACCEPTABLE TO THE OWNERS REPRESENTATIVE. ALL EQUIPMENT, COMPONENTS AND DUCTWORK SHALL BE INSPECTED AND THOROUGHLY CLEANED, READY FOR USE. AT COMPLETION OF JOB, ALL MISCELLANEOUS TOOLS, SCAFFOLDING, SURPLUS MATERIALS, RUBBISH AND DEBRIS SHALL BE REMOVED BY CONTRACTOR.
6. CONTRACTOR SHALL PROVIDE TWO SETS OF 2" MERV 7 OR HIGHER THROW AWAY TYPE FILTERS, A CLEAN SET SHALL BE PROVIDED PRIOR TO TEST AND BALANCE AND AGAIN PRIOR TO OPENING.

PART II PRODUCTS

I. HEATING AND COOLING EQUIPMENT

- A. FURNISH AND INSTALL R-410A ROOFTOP SINGLE PACKAGE COMBINATION ELECTRIC COOLING AND NATURAL GAS FIRED HEATING UNITS BY LENNOX AS SHOWN ON DRAWINGS. EQUIPMENT SHALL BE ARI CERTIFIED AND A.G.A. AND UL LISTED.
- B. ACCESSORIES SHALL INCLUDE LOW AND HIGH PRESSURE SAFETIES, CRANK CASE HEATER, OVERCURRENT AND OVERTEMPERATURE SAFETY, COMPRESSOR VIBRATION ISOLATORS, FILTER DRIERS, REFRIGERANT SERVICE VALVES, COIL HAIL GUARDS WHERE SCHEDULED, CONVENIENCE OUTLETS FACTORY INSTALLED ON SCHEDULED UNITS, UNIT MOUNTED NON-FUSED DISCONNECTS, LOW AMBIENT OPERATION DOWN TO 30 DEGREES F AND EVAPORATOR FREEZE STAT.
- C. COMPRESSORS SHALL BE FULLY HERMETIC SCROLL TYPE WITH INTERNAL VIBRATION ISOLATORS. COMPRESSORS SHALL BE PROVIDED WITH A MINIMUM FIVE (5) YEAR FULL WARRANTY.
- D. THE UNIT HEAT EXCHANGERS SHALL BE STEEL WITH ALUMINIZED STEEL COATING. HEATING CONTROLS SHALL CONSIST OF REDUNDANT GAS VALVES, INTERMITTENT PILOT WITH ELECTRONIC SPARK OR HOT PLATE IGNITION SYSTEM, COMBUSTION EXHAUST FAN PROTECTED BY CENTRIFUGAL SWITCHES, HEAT LIMIT SWITCHES, TIME-DELAY RELAY, FLAME, AND PILOT SENSORS. ALL UNITS SHALL BE CAPABLE OF TWO STAGES OF HEAT. HEAT EXCHANGES SHALL HAVE A TEN (10) YEAR WARRANTY. BURNERS SHALL BE ALUMINIZED IN-SHOT TYPE. THE DRAFT MOTOR SHALL BE MONITORED BY THE CONTROL SYSTEM.
- E. CHICK-FIL-A MAINTAINS A NATIONAL ACCOUNT FOR EQUIPMENT WITH LENNOX CORPORATION. PRICING FOR THE EQUIPMENT HAS BEEN ESTABLISHED IN ADVANCE. CONTACT LENNOX NATIONAL ACCOUNTS AT 972-497-6260 (OR BY FAX AT 972-497-5112) FOR PRICING, ORDERING AND AVAILABILITY.

2. DUCTWORK, INSULATION & INSTALLATION (SEE DWG M2I FOR GREASE DUCT)

- A. ACCEPTABLE MANUFACTURERS OF INSULATION ARE MANVILLE, OWENS CORNING OR KNAUF.
- B. ALL DUCTWORK SHALL BE SHEET METAL, UNLESS NOTED OTHERWISE (UNO).
- C. DUCT DIMENSIONS SHOWN ARE INSIDE CLEAR DIMENSIONS, UNO.
- D. CONSTRUCTION OF DUCTWORK SHALL MEET SMACNA 1" W.C. PRESSURE CLASS STANDARD AND RECOMMENDATIONS. SMACNA SHALL BE FOLLOWED WITH RESPECT TO GAGE THICKNESS, JOINTS, REINFORCING, CONSTRUCTION, INSTALLATION AND SUPPORT FOR PRESSURE CLASS STATED. ALL TRANSVERSE JOINTS IN RECTANGULAR AND ROUND DUCT SHALL BE SEALED PER SMACNA SEAL CLASS C WITH UL DUCT MASTIC SEALANT APPROVED FOR INTENDED USE. DUCT TAPE IS NOT AN ACCEPTABLE SUBSTITUTE FOR MASTIC.
- E. ALL DUCT INSULATION SHALL MEET MINIMUM R-VALUE REQUIRED BY ASHRAE 90J LATEST EDITION. ALL DUCT WRAP SHALL BE MINIMUM 2" THICK, 3/4 PCF AND 5.6 R-VALUE INSTALLED WITH EITHER A VAPOR BARRIER WITH MAXIMUM PERMEANCE 0.05 OR A MINIMUM 2 MIL ALUMINUM REINFORCED FOIL/KRAFT FACING.
- F. ALL DUCT DROPS FROM THE ROOFTOP UNITS SHALL BE EXTERNALLY INSULATED.
- G. SUPPLY AND RETURN AIR DUCTWORK SERVING ALL AREAS SHALL BE EXTERNALLY INSULATED.
- H. ALL AIR CONVEYANCE COMPONENTS SUCH AS, BUT NOT LIMITED TO DUCT, DUCT PLENUMS, GRILLES/DIFFUSERS, BACK PANS, AND BOOTS SHALL BE INSULATED. INSULATION TYPE IS COVERED ELSEWHERE IN THIS SPECIFICATION.
- I. RESTROOM RECTANGULAR EXHAUST AIR DUCTWORK SHALL BE LINED WITH 1" THICK, 1/2 PCF INSULATION.
- J. TRUNK DUCTS SHALL BE ISOLATED FROM UNIT VIBRATION WITH THE USE OF NFPA AND UL APPROVED FLEXIBLE CONNECTORS INSTALLED AT THE TOP OF BOTH SUPPLY AND RETURN DROPS.
- K. INSULATED FLEXIBLE DUCT MAY BE UTILIZED FOR RUNOUTS TO GRILLES AND DIFFUSERS ONLY IN THE HORIZONTAL POSITION AND IN MAXIMUM LENGTHS OF 4'-0", NO EXCEPTIONS. SEE TAKE-OFF DETAIL ON DRAWING M3I.
- L. CONSTRUCTION OF FLEXIBLE DUCTWORK SHALL INCLUDE SPIRAL METAL HELIX BONDED TO A POLYESTER CORE, FIBERGLASS INSULATION WITH POLYETHYLENE OR MYLAR VAPOR BARRIER. ALL COMPONENTS SHALL HAVE APPROPRIATE UL APPROVAL AND SHALL BE EQUIVALENT TO THERMAFLEX MKE.
- M. FLEXIBLE DUCT SHALL BE INSTALLED PER THE "ADC FLEXIBLE DUCT PERFORMANCE AND INSTALLATION STANDARDS, 4TH ED" USING FOIL TAPE AND DRAWBAND ON THE INNER CORE AND TAPE OR DRAWBAND ON THE OUTER JACKET.
- N. DUCT TAPE SHALL BE EQUAL TO FASSON I81-B FX, 2-1/2" WIDE.
- O. SINGLE THICKNESS TURNING VANES SHALL BE INSTALLED AT 90 DEGREE TURNS IN SUPPLY DUCTWORK WHERE ANY ONE DIMENSION IS GREATER THAN 12".
- P. RADIUS ELBOWS MAY BE SUBSTITUTED FOR 90 DEGREE ELBOWS AT THE DISCRETION OF THE CONTRACTOR. CENTERLINE RADIUS EQUAL TO 3W/2 PER FIGURE NO. 2-2 IN SMACNA HVAC DUCT CONSTRUCTION STANDARDS.
- Q. EXTERNAL INSULATION ON BOTTOM OF DUCTS 24" OR WIDER SHALL BE SUPPORTED WITH STICK PINS ON 16" CENTERS. STICK PIN WASHERS SHALL BE COVERED WITH DUCT TAPE OR MASTIC.

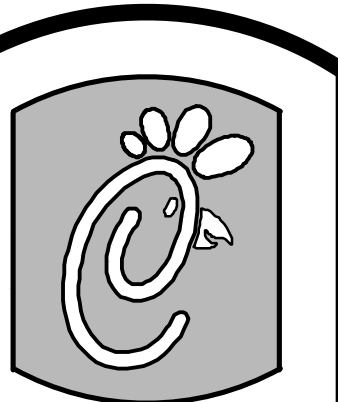
3. CONTROLS

- A. SYSTEMS SHALL BE COMPLETE WITH CONNECTIONS TO CFA-500 TEMPERATURE CONTROL PANEL AS MANUFACTURED BY SUNCOAST ENVIRONMENTAL CONTROLS (S.E.C.) (PH: 877-544-6679). THE PANEL IS PROVIDED AND MOUNTED BY THE ELECTRICAL CONTRACTOR. CONTROL WIRING TERMINATIONS ARE BY THE MECHANICAL CONTRACTOR.
- B. THE SMOKE DETECTORS SHALL BE FACTORY INSTALLED AND WIRED BY THE ROOFTOP UNIT MANUFACTURER.
- C. A FACTORY INSTALLED SMOKE DETECTOR IN THE RETURN AIR SECTION OF EACH AIR CONDITIONING UNIT SHALL STOP THE INDOOR FAN AND CLOSE THE OUTSIDE AIR DAMPER IN THE EVENT OF EXCESSIVE TEMPERATURE OR SMOKE. SMOKE DETECTOR SHALL BE LOCATED PRIOR TO ANY EXHAUST FROM THE BUILDING OR MIXING WITH FRESH AIR MAKE-UP. UPON DETECTION, THE SYSTEM SHALL NOT RESTART UNTIL THE DEVICE IS MANUALLY RESET. DEVICES SHALL BE LOCATED WHERE THEY CAN BE EASILY ACCESSED AND WHERE CLEAR OF FILTERS.
- D. CHICK-FIL-A HAS A NATIONAL ACCOUNT WITH SUNCOAST ENVIRONMENTAL CONTROLS FOR THE SMOKE DETECTOR TEST/RESET ANNUNCIATOR STATIONS. THE TEST/RESET STATIONS WILL BE PURCHASED BY THE ELECTRICAL CONTRACTOR AS A PART OF A NATIONAL ACCOUNT PACKAGE AND TURNED OVER TO THE MECHANICAL CONTRACTOR FOR INSTALLATION.

- E. THE REMOTE TEST/RESET ANNUNCIATORS SHALL BE PROVIDED BY THE ELECTRICAL CONTRACTOR AND INSTALLED BY THE MECHANICAL CONTRACTOR. INSTALLATION BY MECHANICAL SHALL INCLUDE MOUNTING OF THE ANNUNCIATORS AND ALL WIRING FROM EACH DEVICE TO THE RTU. ELECTRICAL WILL PROVIDE A JUNCTION BOX IN THE WALL WITH 1/2" CONDUIT STUBBED UP ABOVE THE CEILING FOR EACH REMOTE TEST STATION AS SHOWN ON THE ELECTRICAL PLANS. ANNUNCIATOR SHALL BE SUNCOAST CONTROLS REMOTE TEST/RESET STATION WITH POWER LED, TROUBLE LED, ALARM LED, 90DB HORN AND TEST/RESET BUTTON.
- F. THE RESTROOM FAN SHALL BE INTERLOCKED TO THE LIGHTS SERVING THE MEN AND WOMEN RESTROOMS. THE HOOD FANS SHALL BE CONTROLLED VIA THE SUNCOAST CFA-500 CONTROL PANEL. WIRING, RELAYS AND SWITCHES FOR CONTROL OF ALL FANS ARE BY ELECTRICAL CONTRACTOR.
- G. LENNOX UNITS - THERMOSTATS ARE PROVIDED AND INTEGRATED INTO THE TEMPERATURE CONTROL PANEL BY SUNCOAST ENVIRONMENT CONTROLS. SUNCOAST WILL PROVIDE A ROBERTSHAW SERIES 300 THERMOSTAT PRE-WIRED IN THE TEMPERATURE CONTROL PANEL. A REMOTE TEMPERATURE SENSOR FOR EACH THERMOSTAT IS ALSO PROVIDED. MECHANICAL CONTRACTOR SHALL INSTALL ALL WIRING BETWEEN THE THERMOSTAT, THE REMOTE SENSOR AND THE ROOFTOP UNIT.
- H. MECHANICAL CONTRACTOR SHALL INSTALL CONTROL WIRING IN 1/2" CONDUIT WHERE REQUIRED BY CODE. WHERE NOT REQUIRED TO BE IN CONDUIT, ALL WIRING SHALL BE RUN PARALLEL TO STRUCTURAL MEMBERS OR PERPENDICULAR WITH NO DIAGONAL ROUTING. ALL WIRING SHALL BE SECURED TO THE FRAMING TO PREVENT SAGGING IN RUNS. WIRING TO ROOFTOP UNITS SHALL BE ROUTED THROUGH THE FACTORY THRU-BASE FITTING IN THE UNIT BASE. NO SPLICING OF WIRING WILL BE ACCEPTED. ALL WIRING ABOVE THE ROOF SHALL BE INSTALLED IN EXTERIOR GRADE FLEXIBLE CONDUIT. ALL CONTROL WIRING AND CONTROL WIRING CONDUIT SHALL BE FURNISHED AND INSTALLED BY THE MECHANICAL CONTRACTOR. WIRING SHALL BE INSTALLED IN ACCORDANCE WITH LATEST EDITION OF NEC.

PART III EXECUTION

1. FURNISH AND INSTALL SYSTEM IN ACCORDANCE WITH REFERENCED STANDARDS, APPLICABLE CODES, MANUFACTURER'S RECOMMENDATIONS AND AS INDICATED ON DRAWINGS.
2. OWNER SHALL TEST AND BALANCE MECHANICAL SYSTEM IN ACCORDANCE WITH NEI OR AABC STANDARDS TO ASSURE CONFORMANCE WITH DESIGN. G.C. WILL MAKE MECHANICAL CONTRACTOR AVAILABLE DURING TEST AND BALANCE TO ASSIST TESTING AGENCY AND TO MAKE CORRECTIONS IMMEDIATELY NECESSARY. CONTRACTOR SHALL CORRECT ITEMS ON WRITTEN TEST AND BALANCE REPORT.
3. CONTRACTOR SHALL INSTRUCT THE OWNER'S REPRESENTATIVE IN ALL MATTERS PERTAINING TO THE PROPER MAINTENANCE OF EQUIPMENT FURNISHED UNDER THIS CONTRACT THROUGH DEMONSTRATION AND EXPLANATION OF OPERATING & MAINTENANCE MANUALS.
4. CONTRACTOR SHALL PROVIDE A "SAMPLE MAINTENANCE PROPOSAL" TO THE OWNER'S REPRESENTATIVE IN ALL MATTERS PERTAINING TO THE PROPER MAINTENANCE OF EQUIPMENT FURNISHED UNDER THIS CONTRACT.
5. CONTRACTOR SHALL COMPLETE A/C EQUIPMENT STARTUP DOCUMENTATION PROVIDED BY OWNER.



Chick-fil-A

5200 Buffington Rd.
Atlanta Georgia,
30349-2998

Revisions:

Mark Date By

△

Mark Date By

△

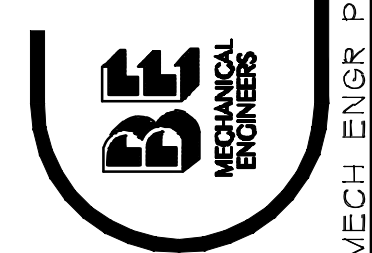
Mark Date By

△

Seal



BENNER ENGINEERING, LLC
3000 Langford Road
Building 24-0
Norcross, GA 30071



STORE: 2795
Chick-Fil-A
FSU S08N144

KAHN DR & JACKSON CT
LUMBERTON, NC 28358

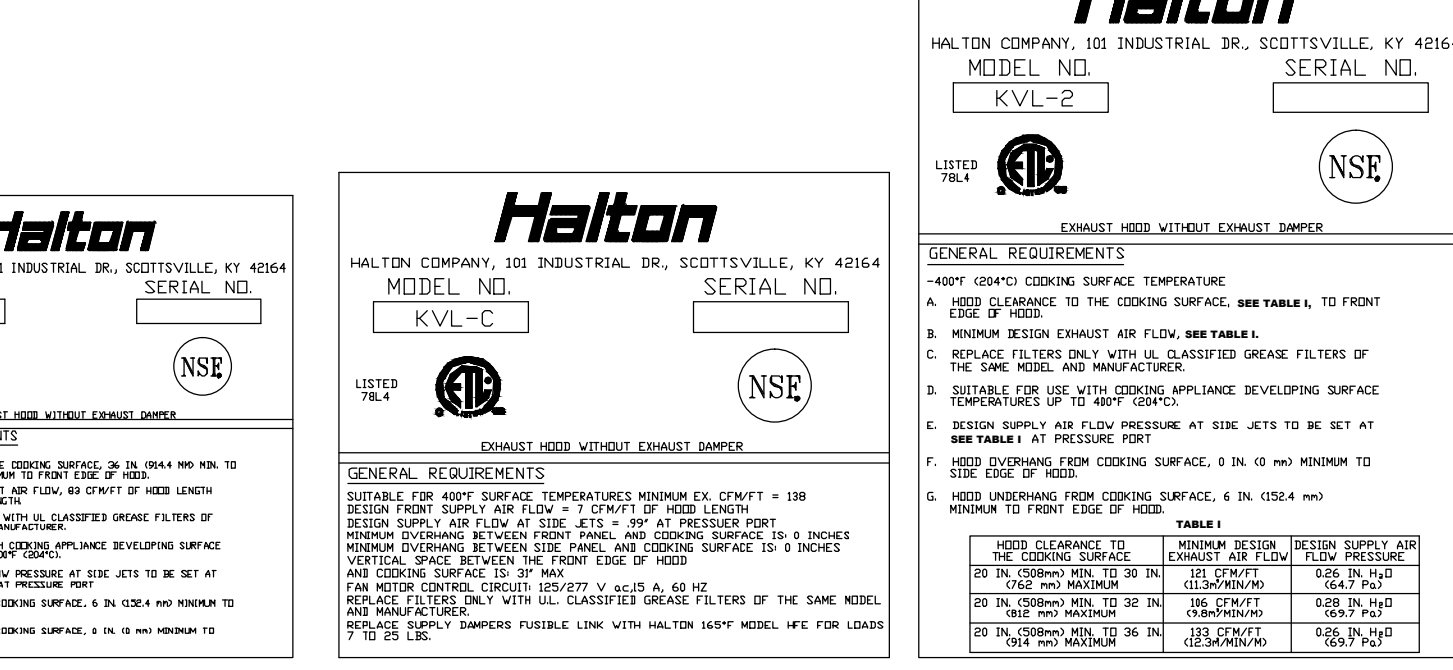
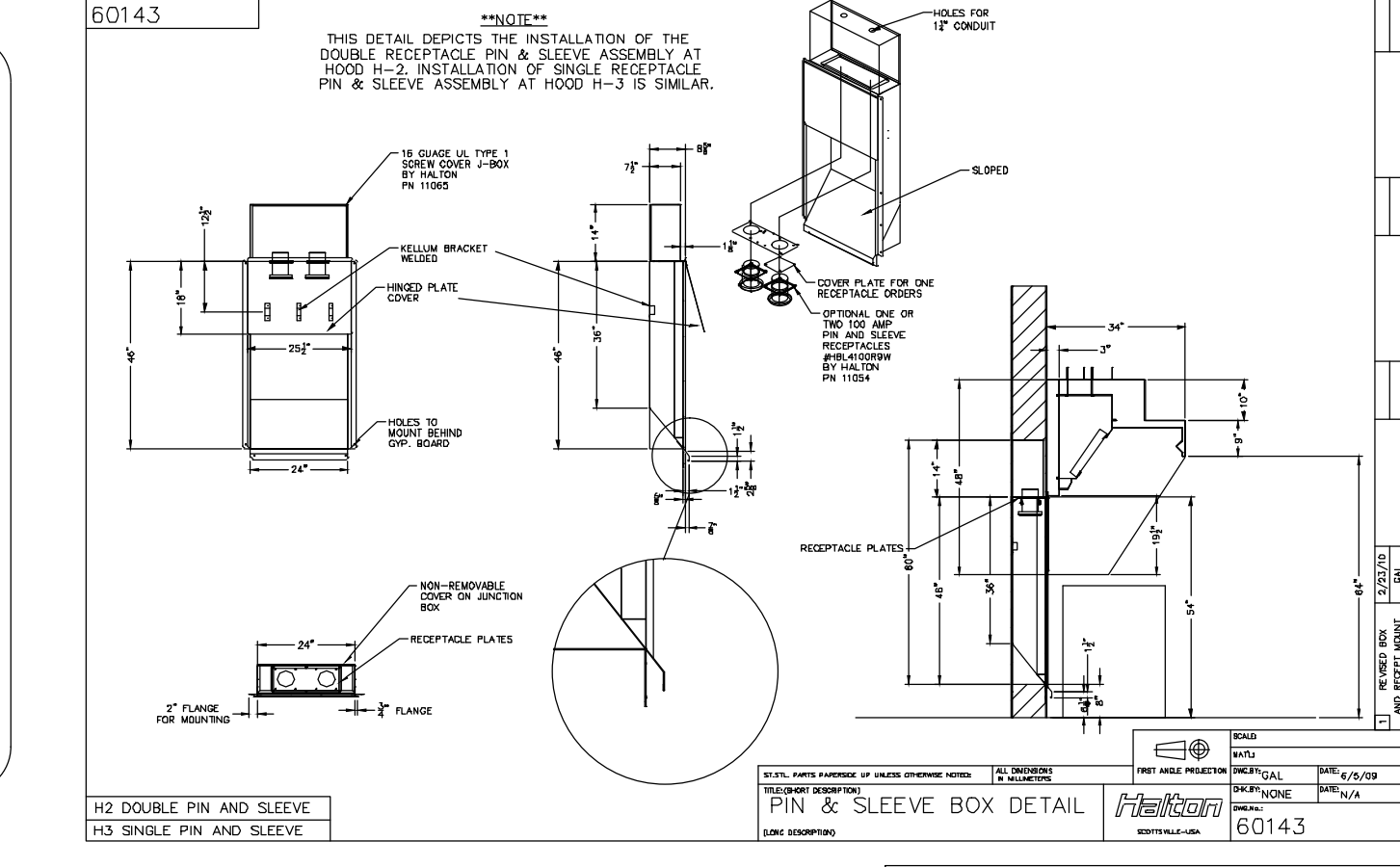
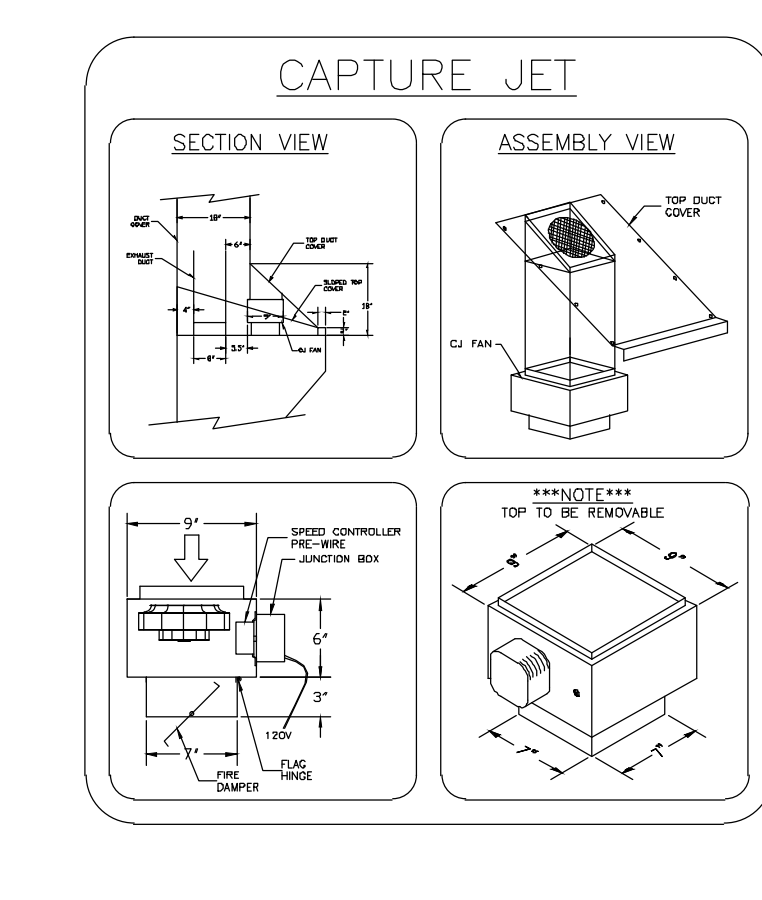
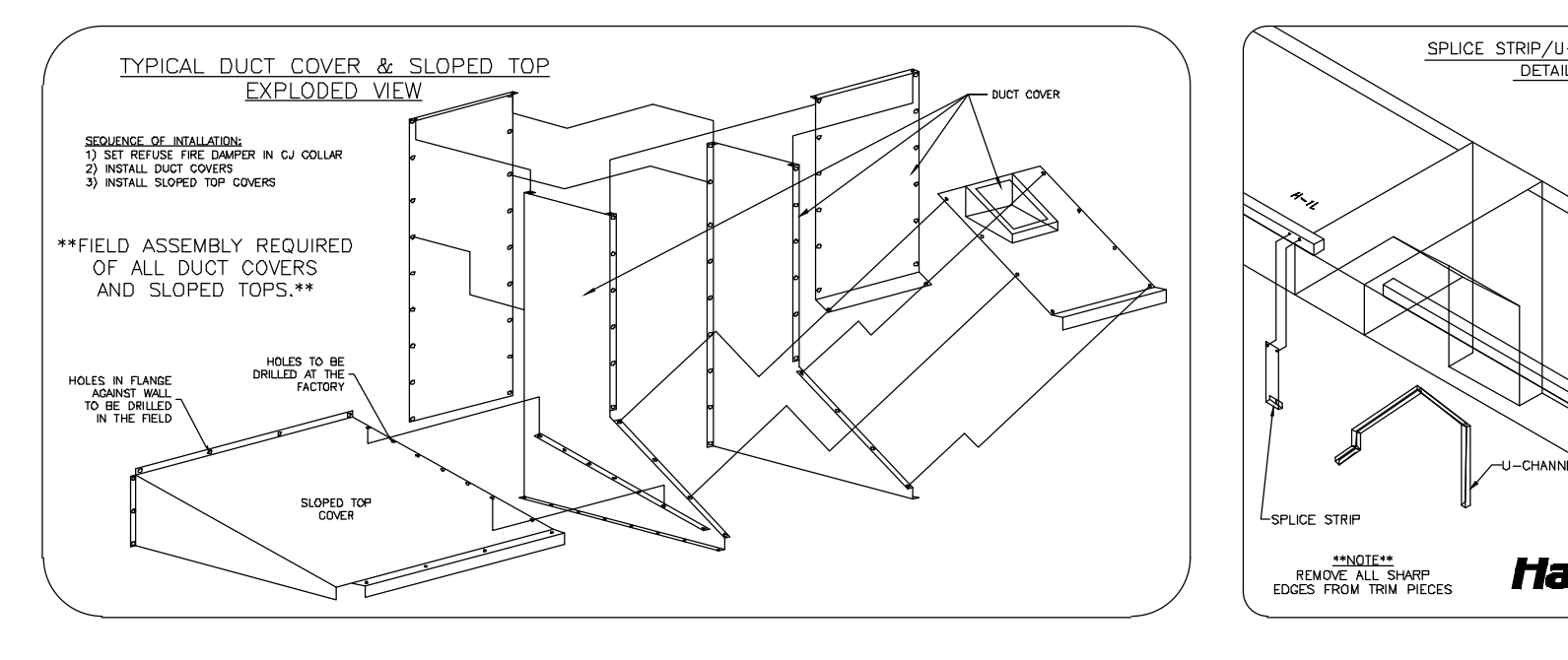
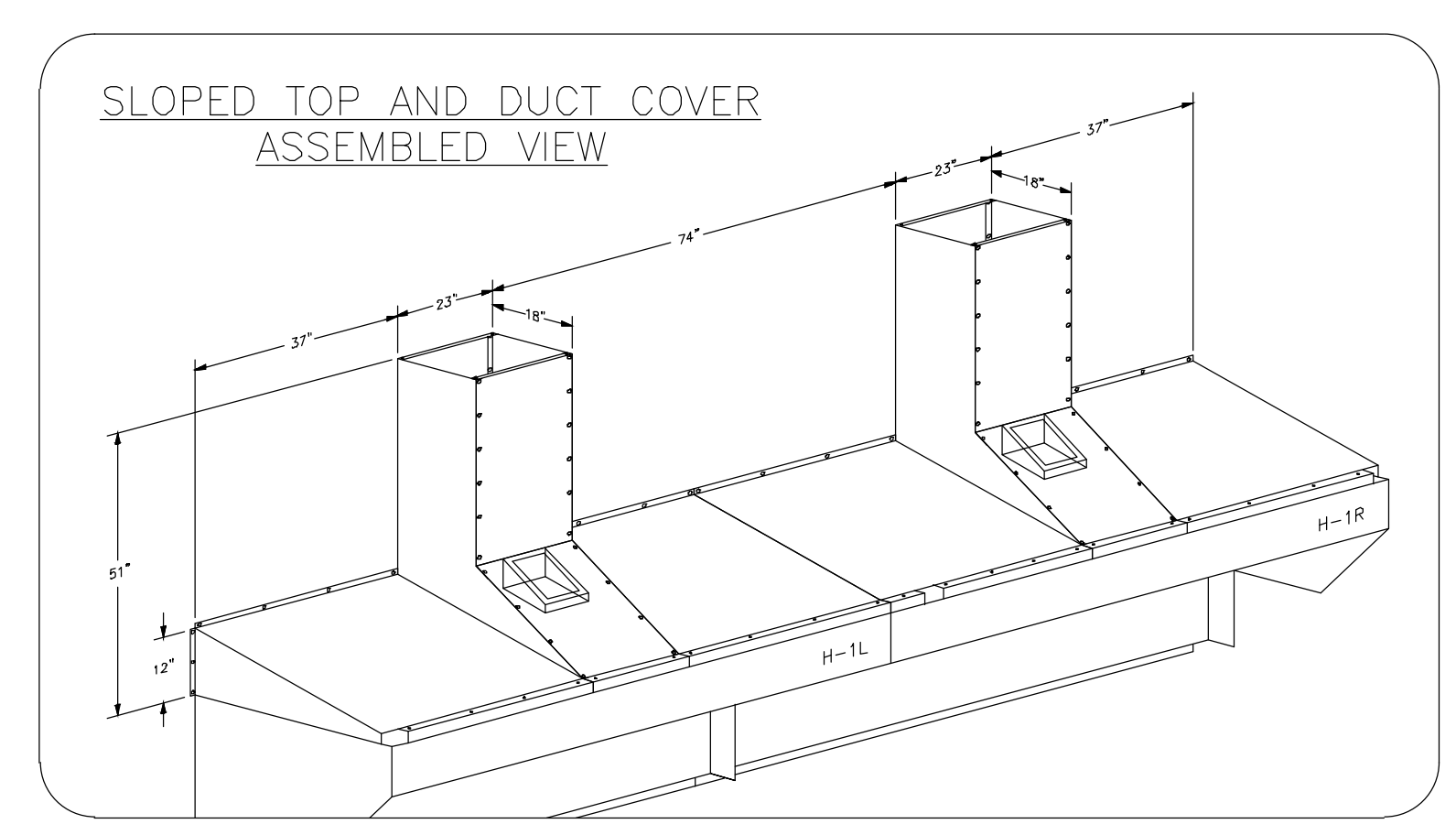
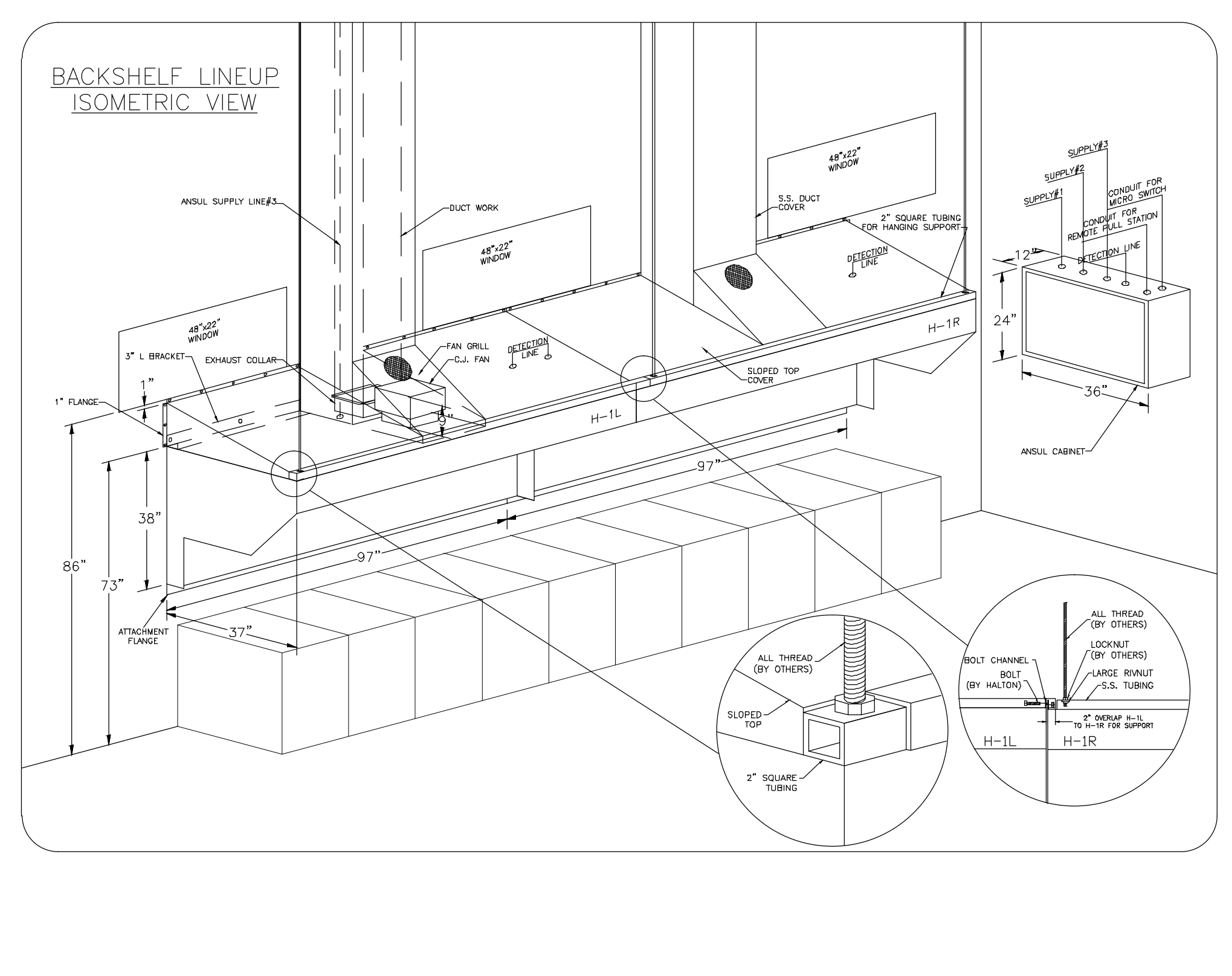
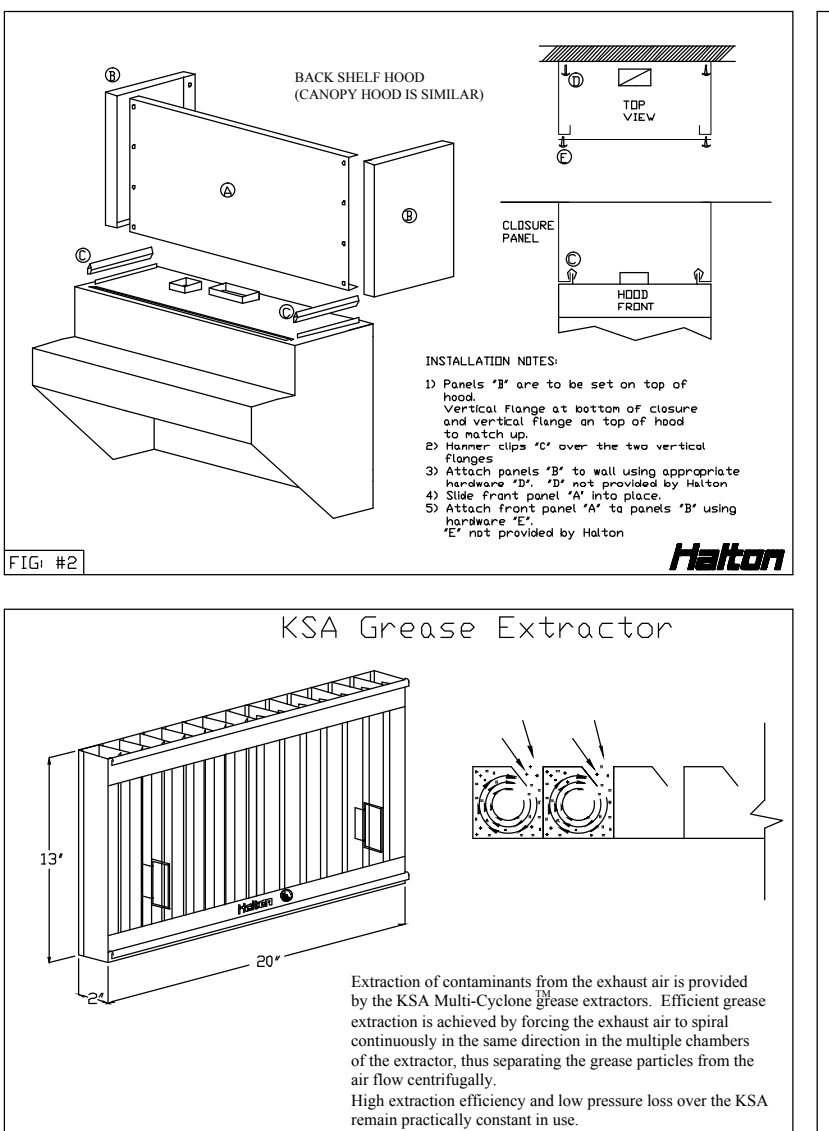
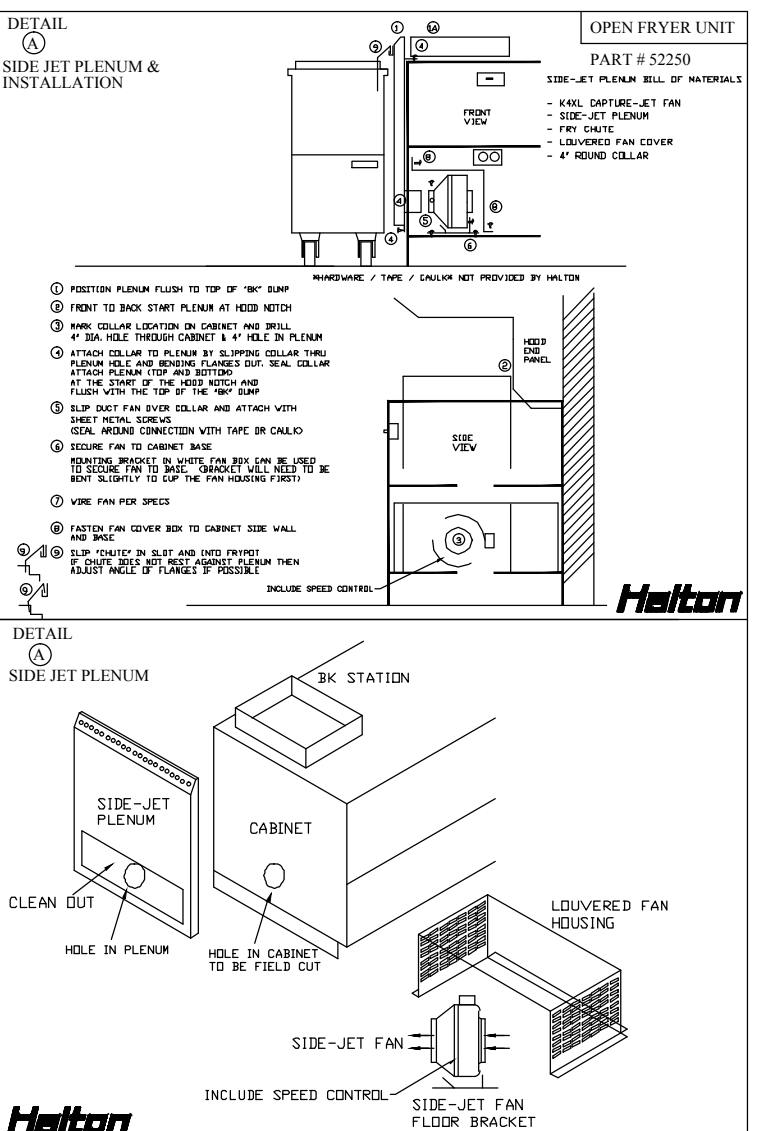
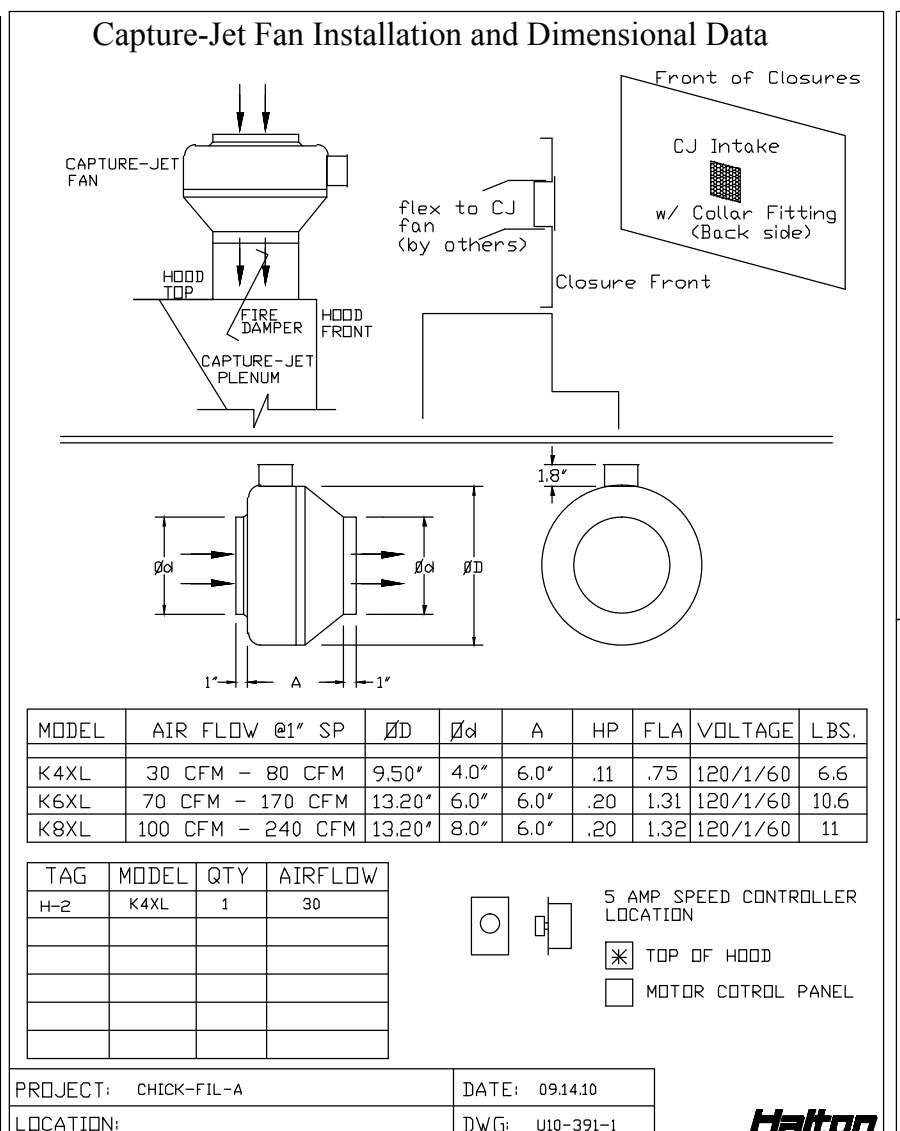
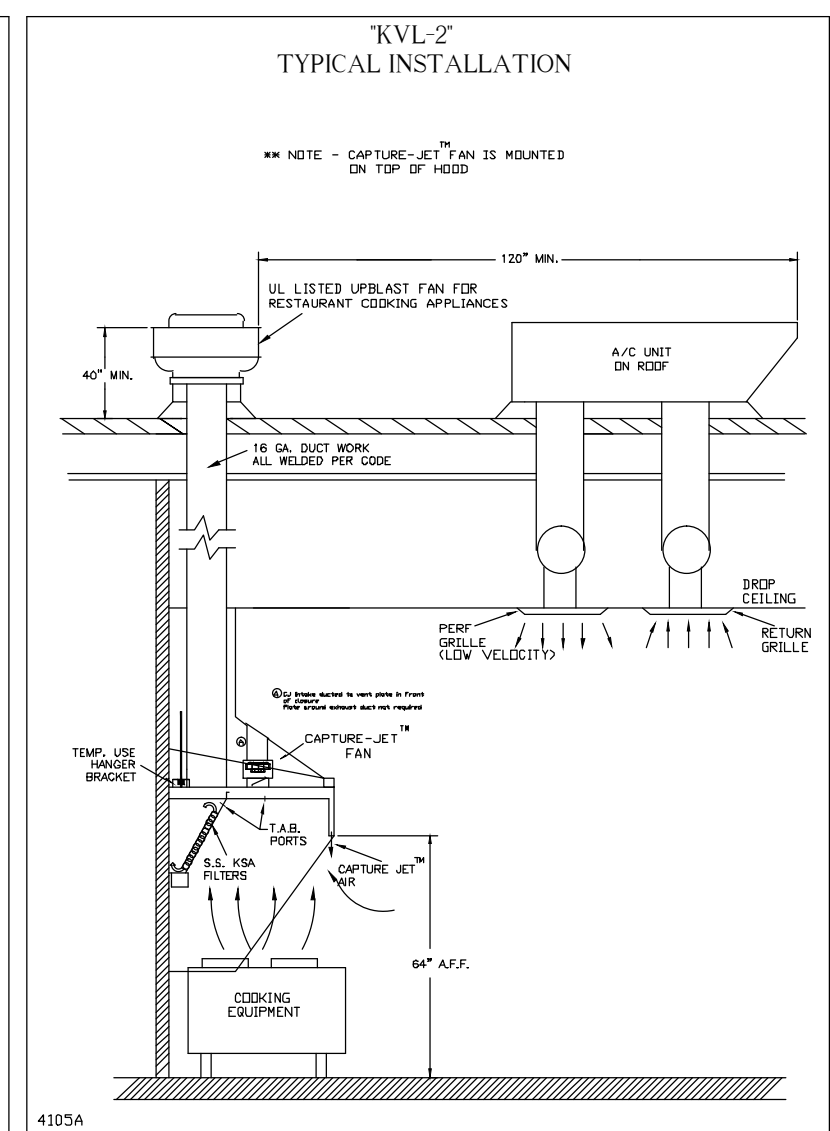
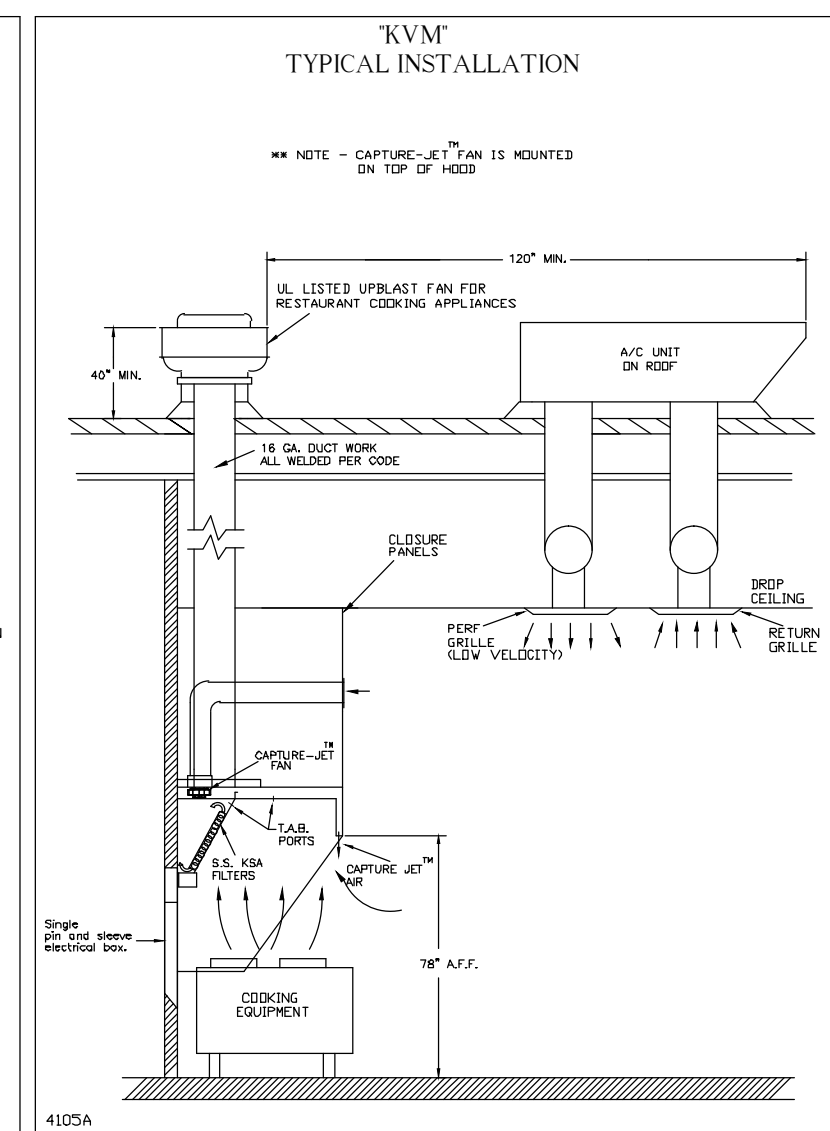
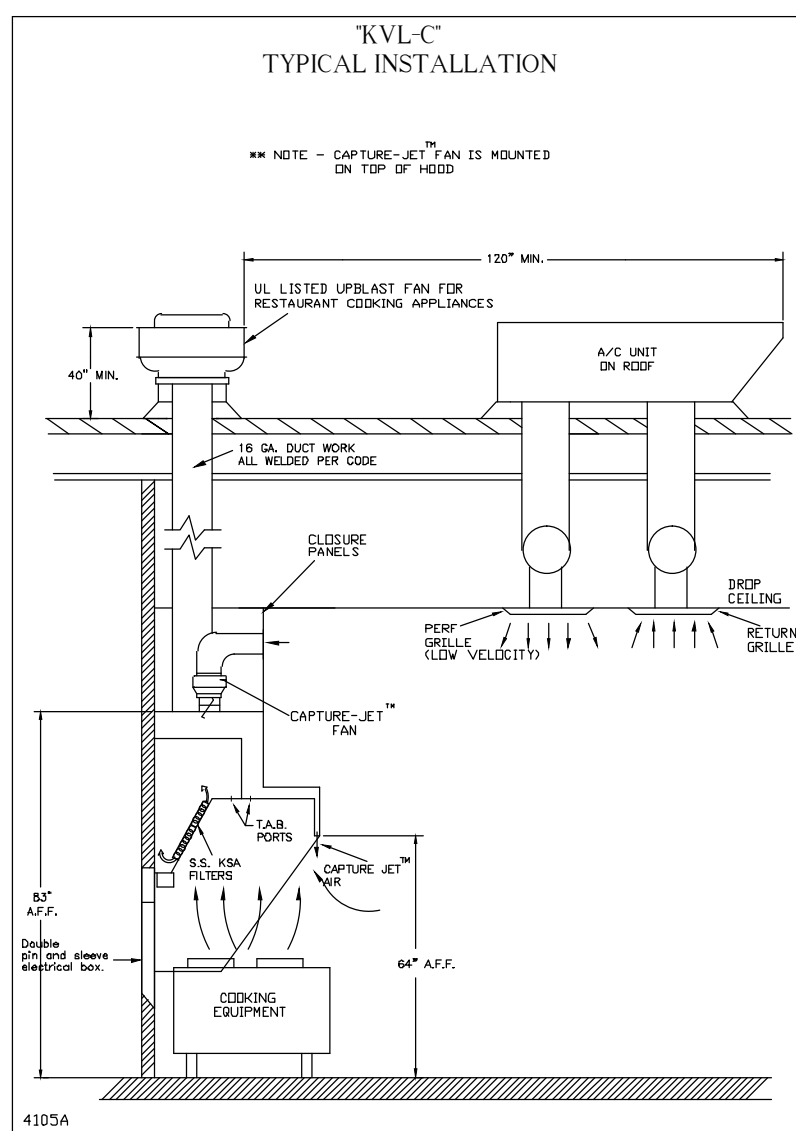
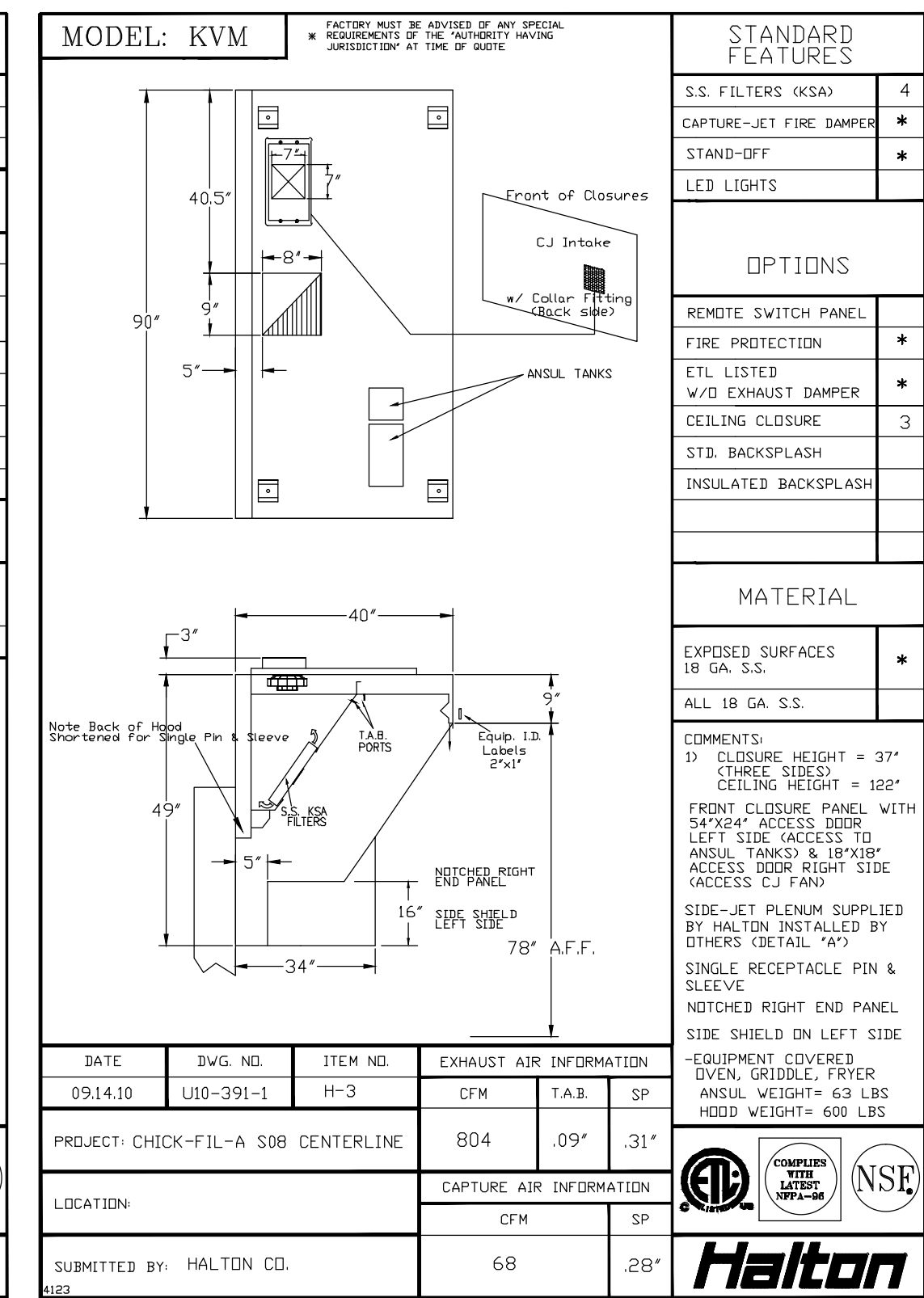
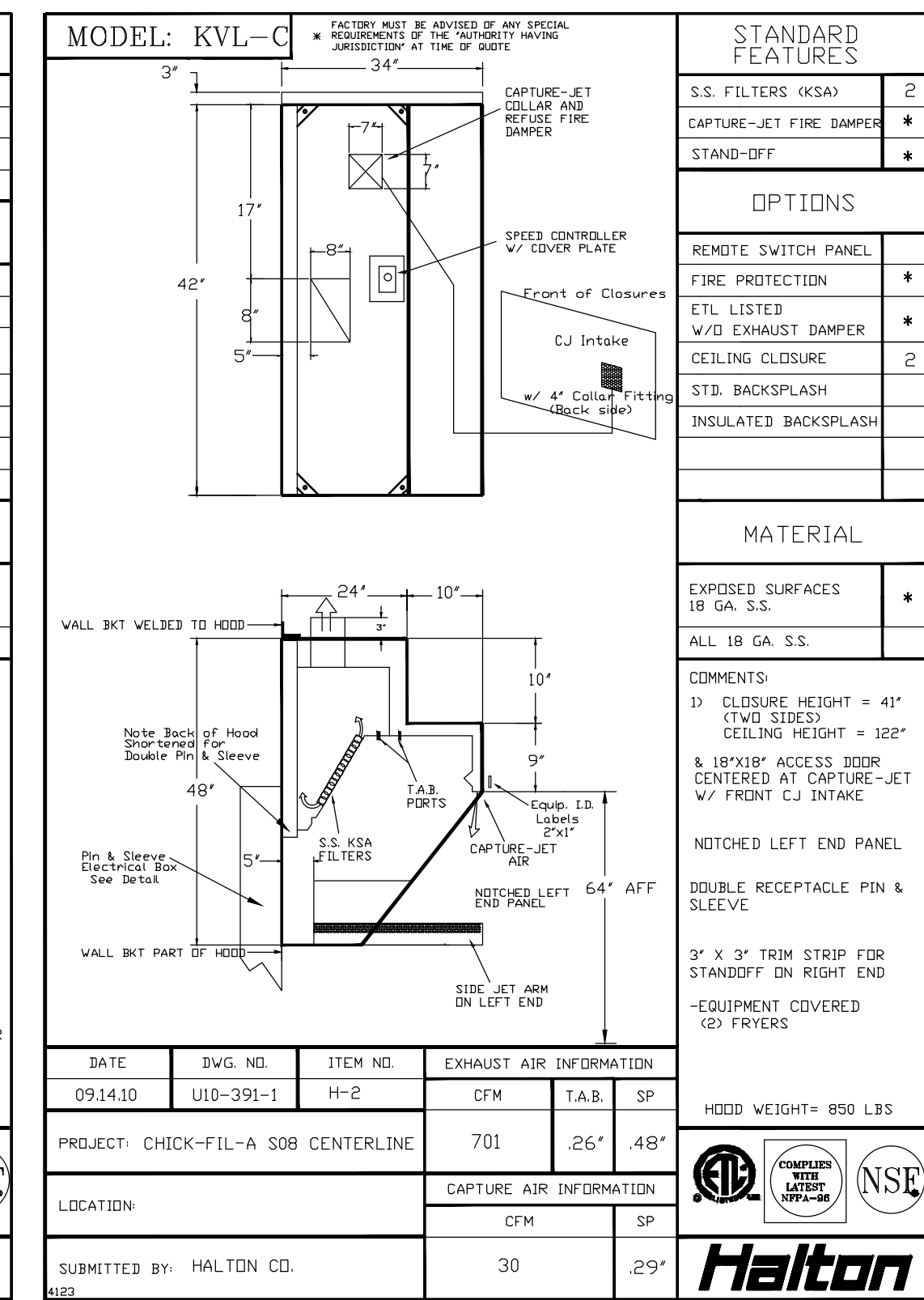
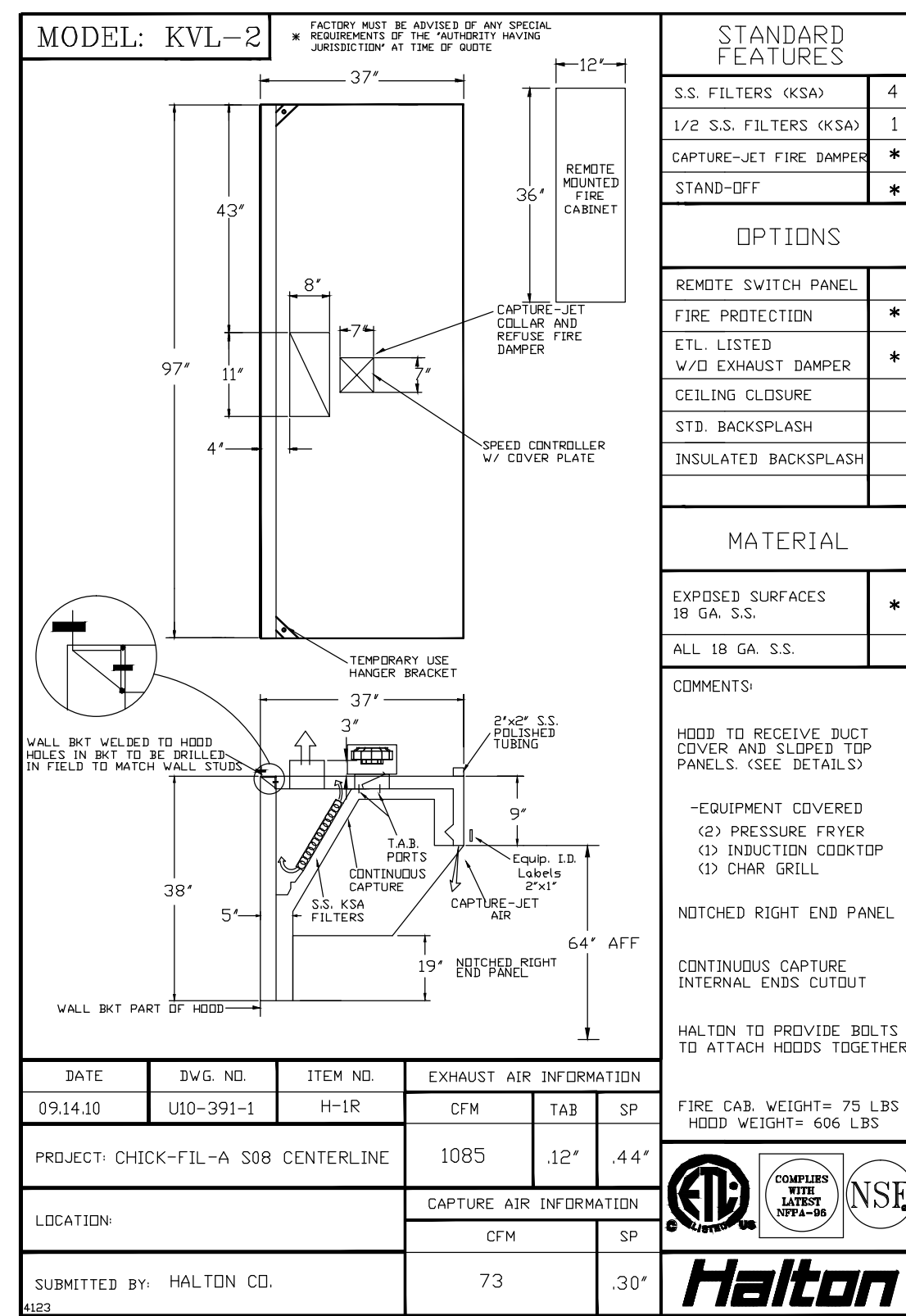
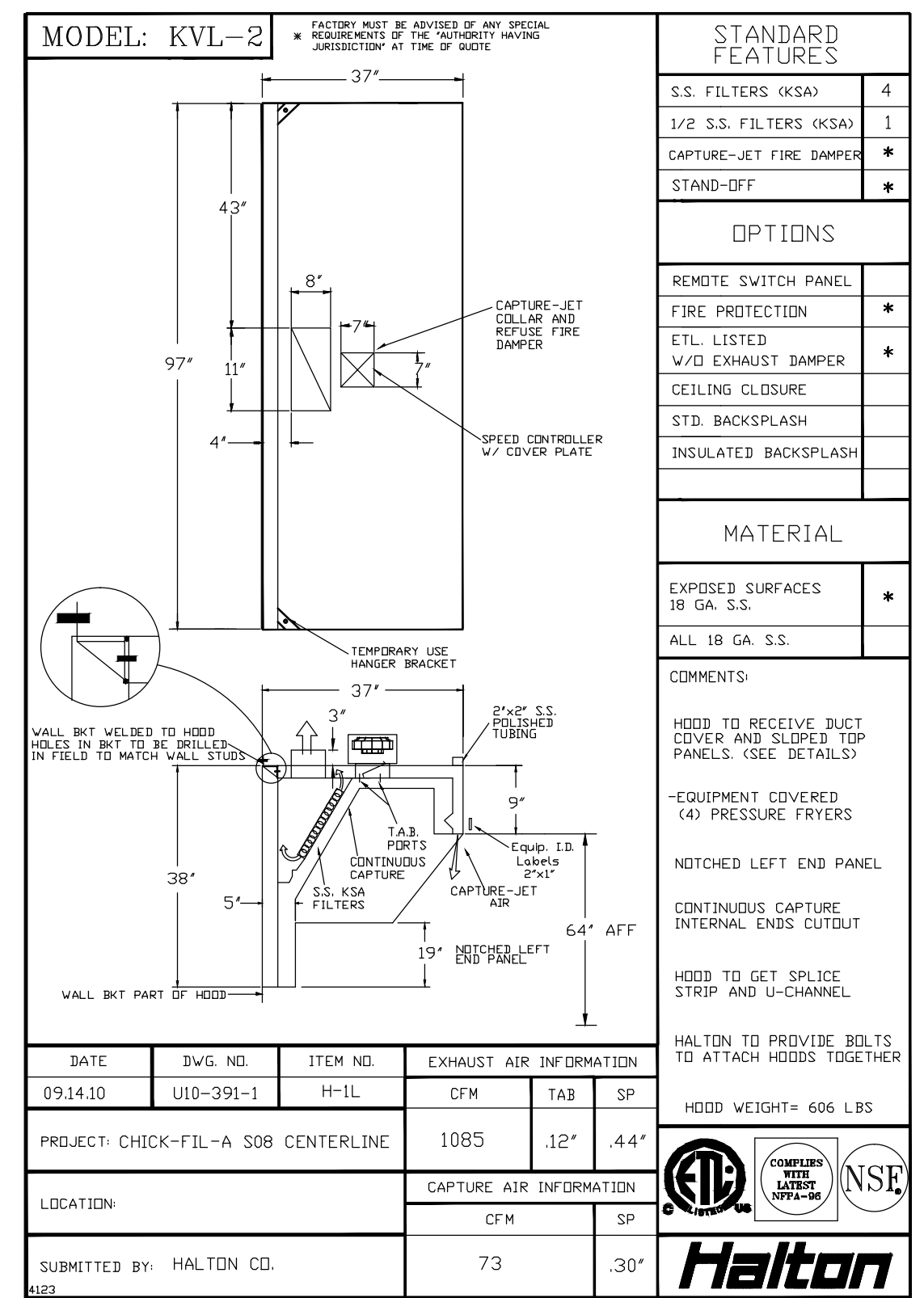
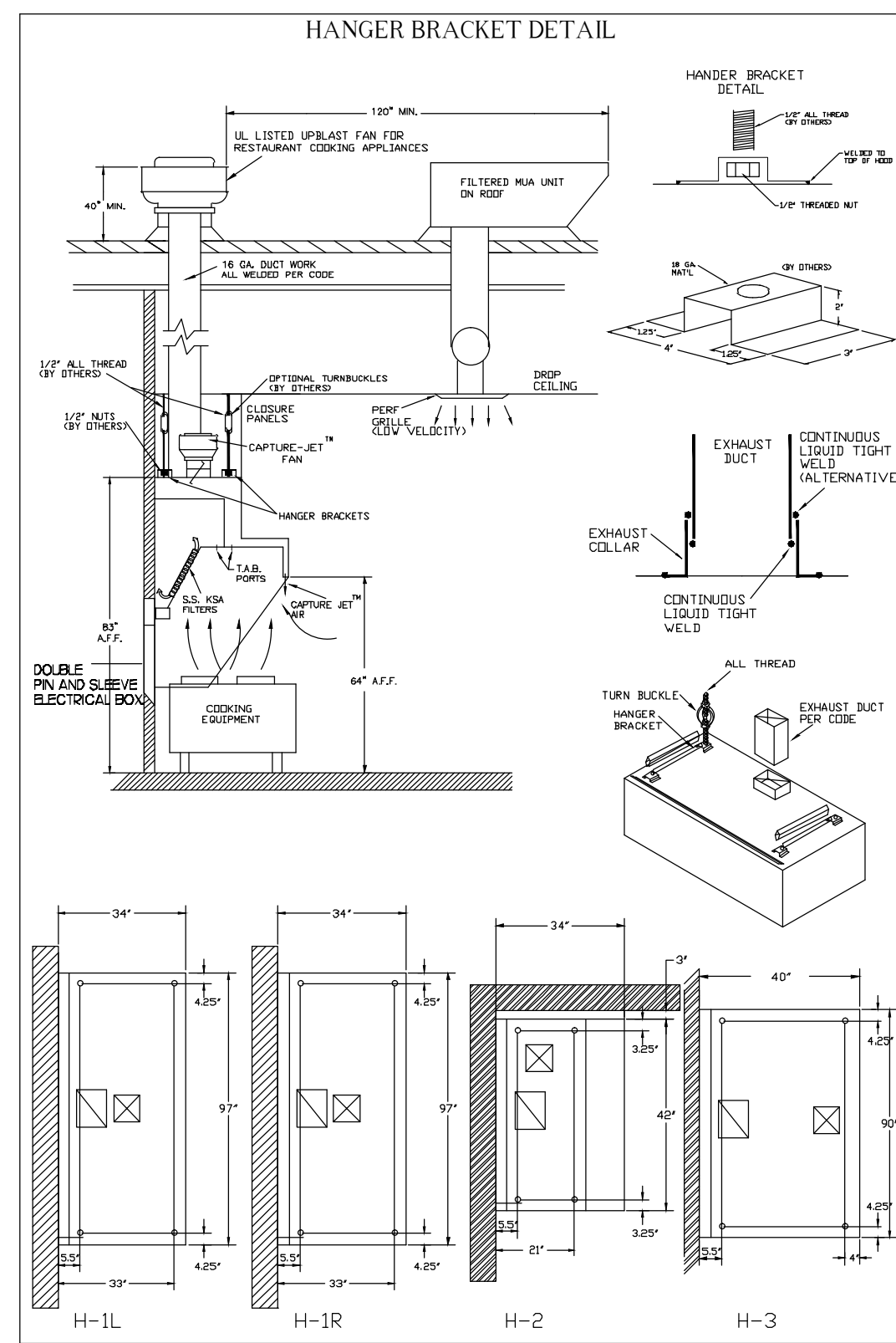
SHEET TITLE
MECHANICAL
SPECIFICATIONS

VERSION: 6
ISSUE DATE: 1-2011

Job No. : 10084
Store : 2795
Date : 1/10/12
Drawn By : JL/RW
Checked By : RDB

Sheet

M-5.I



MAIL APPROVED DRAWINGS TO APPROPRIATE FACTORY BELOW: WEBSITE: WWW.HALTONCOMPANY.COM

HALTON CO. (USA)
 101 INDUSTRIAL DRIVE
 SCOTTSVILLE, KY 42164
 1-270-257-5600

HALTON CO. (CANADA)
 1021 BREVIK PLACE
 MISSISSAUGA, ON L4W 3R7
 1-905-624-0301

PROJECT: CFA SOB V6 CENTERLINE (SI) INDUSTRIAL DR., SCOTTSVILLE, KY 42164
 MODEL NO. KVL-2 SERIAL NO. [blank]
 LISTED NLS

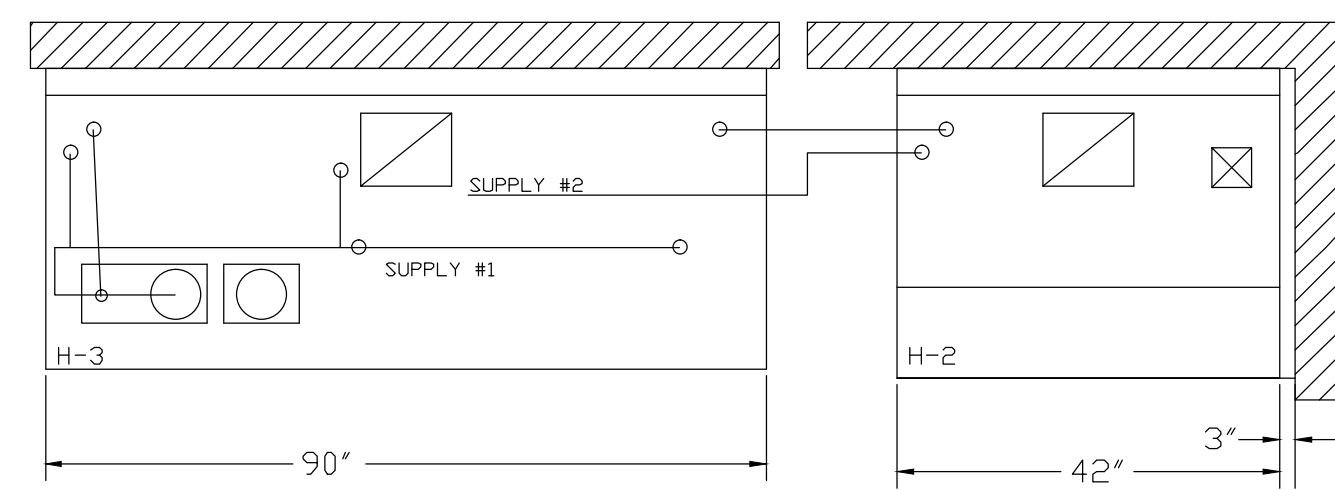
GENERAL REQUIREMENTS:
 - HOODS TO BE INSTALLED TO THE COOKING SURFACE. SEE TABLE TO FRONT OF HOOD FOR DIMENSIONS.
 - HOODS TO BE INSTALLED TO THE COOKING SURFACE. SEE TABLE TO FRONT OF HOOD FOR DIMENSIONS.
 - HOODS TO BE INSTALLED TO THE COOKING SURFACE. SEE TABLE TO FRONT OF HOOD FOR DIMENSIONS.
 - HOODS TO BE INSTALLED TO THE COOKING SURFACE. SEE TABLE TO FRONT OF HOOD FOR DIMENSIONS.
 - HOODS TO BE INSTALLED TO THE COOKING SURFACE. SEE TABLE TO FRONT OF HOOD FOR DIMENSIONS.
 - HOODS TO BE INSTALLED TO THE COOKING SURFACE. SEE TABLE TO FRONT OF HOOD FOR DIMENSIONS.

REVISION DESCRIPTION

REV.	DATE	BY	DATE
1			
2			
3			
4			
5			
6			
7			

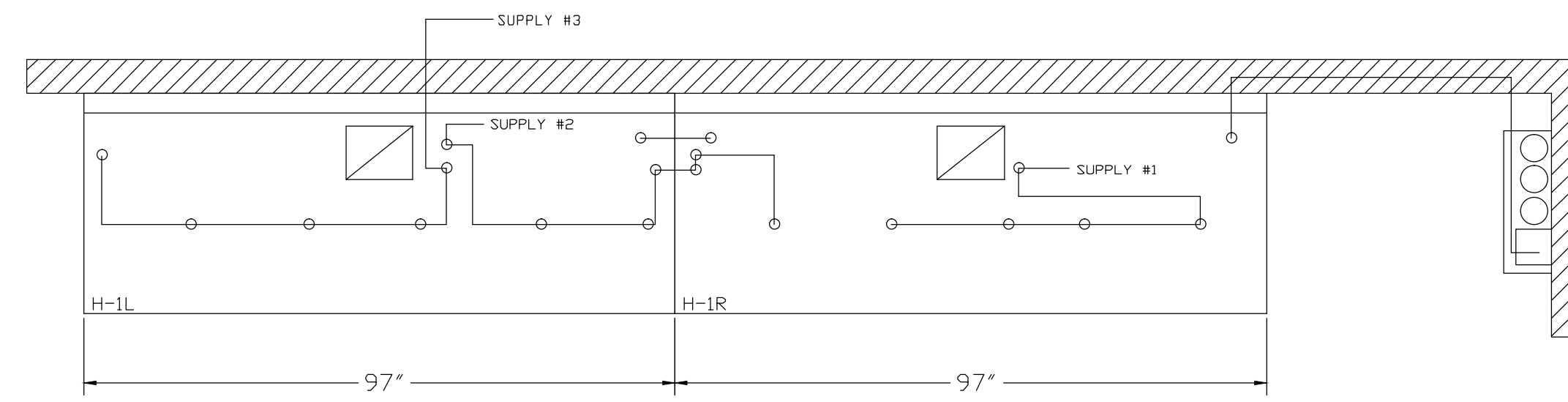
Sheet H-1.1

Halton CARE FOR INDOOR AIR



ANSUL R-102 FIRE SYSTEM
 A) 6 GALLON SYSTEM 2 TANKS (MOUNTED ON HOOD #H-3)
 B) 3/8" BLACK IRON PIPING W/ 3/8" S.S. APPLIANCE DROPS

- (1) REGULATED RELEASE WITH (SINGLE TANK)
- (2) EXTRA MICRO SWITCH ASSEMBLIES (MOUNTED IN REG. REL.)
- (1) SINGLE TANK ENCLOSURE
- (2) 3 GALLON TANKS



ANSUL R-102 FIRE SYSTEM
 A) 9 GALLON SYSTEM (3 TANKS) (REMOTE MOUNTED ON WALL IN F.C.) (FOR HOODS H-1L & H-1R)
 B) 3/8" BLACK IRON PIPING W/ 3/8" S.S. APPLIANCE DROPS

- (1) DEM REGULATED RELEASE
- (2) EXTRA MICRO SWITCH ASSEMBLIES (MOUNTED IN REG. REL.)
- (3) 3 GALLON TANKS

FUSIBLE LINK RATINGS

ITEM	TEMP
OPEN FRYERS	450°
2 BURNER / FLAT TOP	450°
PRESSURE FRYERS	450°
GRILL	450°
EXHAUST COLLARS	450°

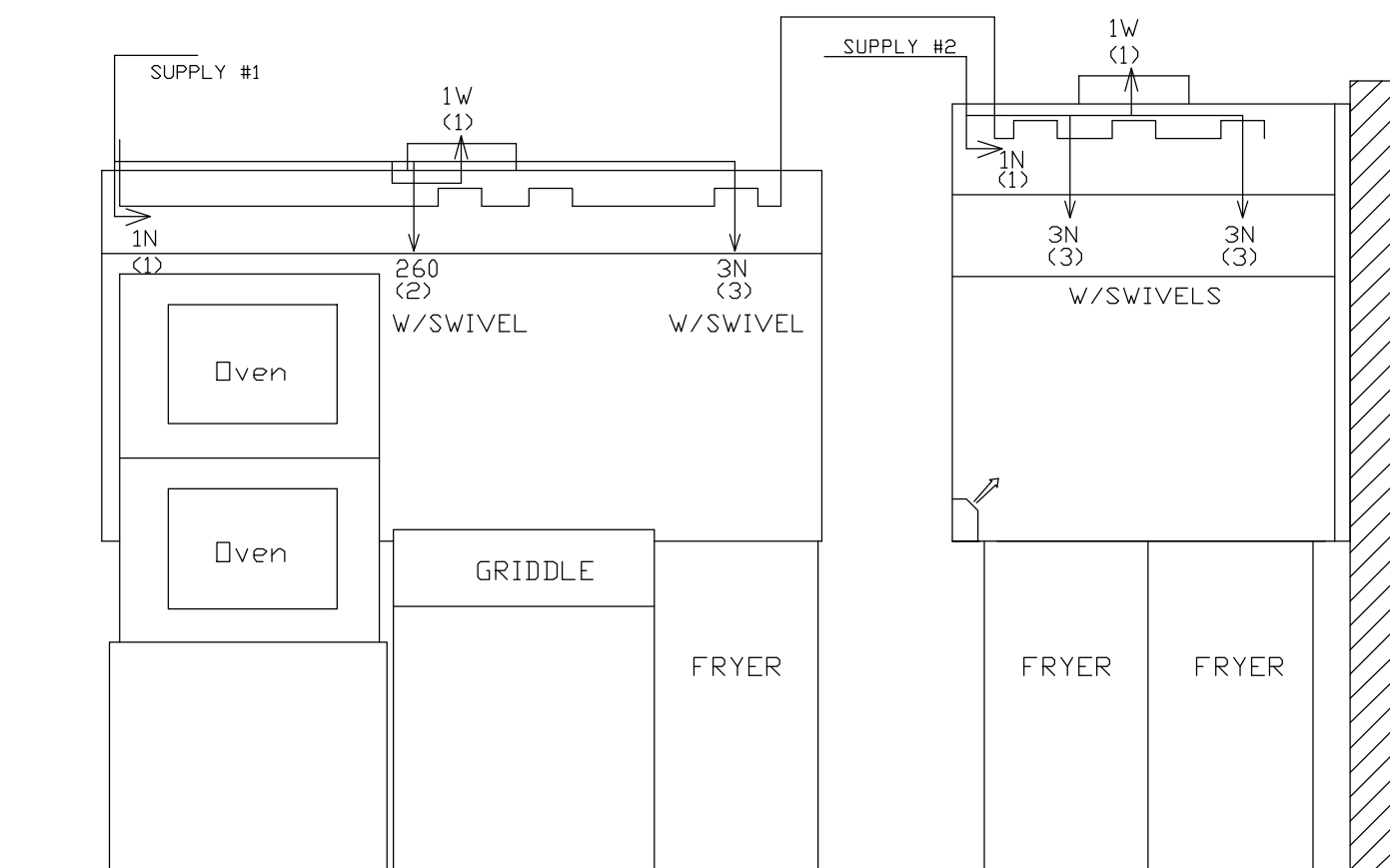
ANSUL R-102 FIRE SYSTEM NOTES
 THREE TANK SYSTEM REMOTE MOUNTED FOR (H-1)
 MAXIMUM FLOW POINTS = 33

ANSUL R-102 FIRE SYSTEM NOTES
 TWO TANK SYSTEM MOUNTED ON TOP OF (H-3)
 MAXIMUM FLOW POINTS = 22

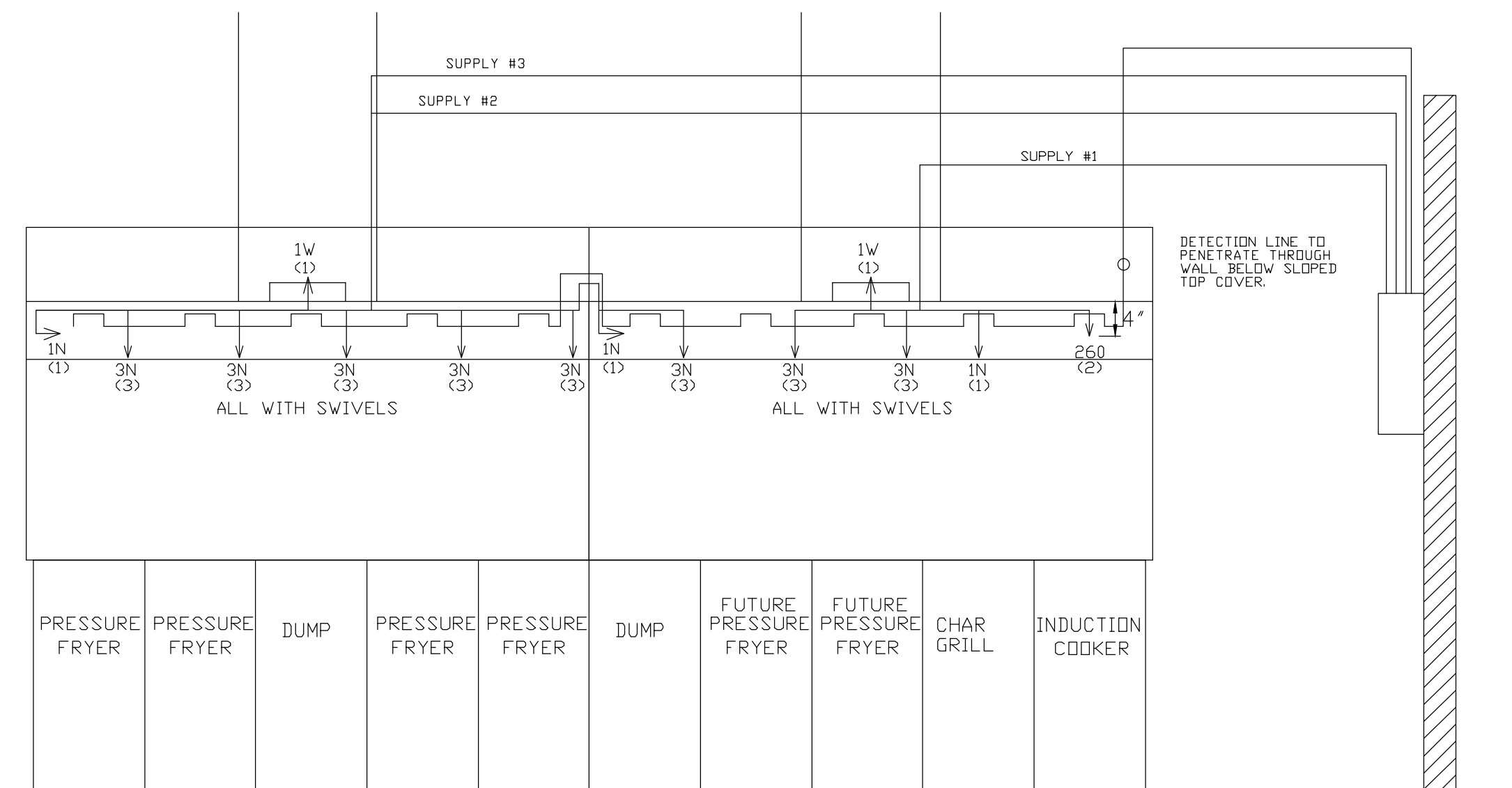
ITEM #	QTY	DESCRIPTION	FLOW PTS (TOTAL)
1W	4	DUCT NOZZLES	4
1N	4	PLENUM NOZZLES	4
1N	1	APPLIANCE NOZZLES	1
3N	11	APPLIANCE NOZZLES	33
260	2	APPLIANCE NOZZLES	4
TOTAL FLOW POINTS - 46			

ITEM #	QTY	DESCRIPTION
#200	14	SERIES DETECTORS W/ FUSIBLE LINKS
#201	2	TERMINAL DETECTOR W/ FUSIBLE LINKS
#202	1	3 GALLON REGULATED RELEASE W/ DOUBLE POLE MICRO SWITCH
#203	1	DEM REGULATED RELEASE W/ DBL POLE MICRO SWITCH
#204	3	EXTRA 3 GALLON TANKS
#205	1	SINGLE TANK ENCLOSURE W/ TANK
#206	2	REMOTE PULL STATION

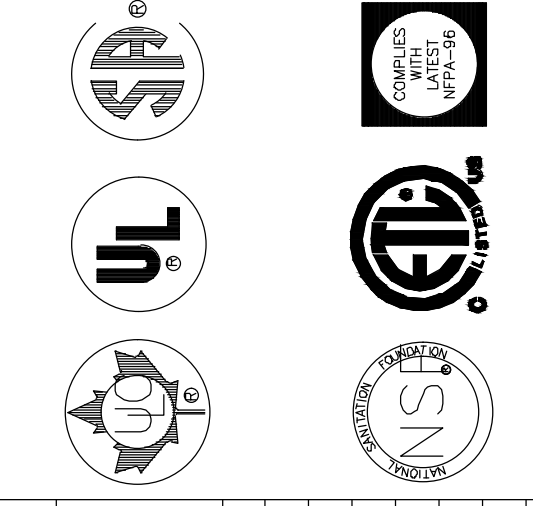
ANSUL R-102 FIRE SYSTEM
 UL LISTED PER STD LATEST STD 300
 1. FINAL INSTALLATION IS TO BE MADE IN ACCORDANCE WITH ALL APPLICABLE CODES
 2. ALL ELECTRICAL COMPONENTS FOR EQUIPMENT SHUT DOWN TO BE PROVIDED BY THE ELECTRICIAN.
 MICRO-SWITCH INSTALLED IN REGULATED RELEASE BY ANSUL INSTALLER
 3. REMOTE PULL STATION LOCATED PER MECHANICAL DRAWINGS



ANSUL R-102 FIRE SYSTEM LAYOUT



THIS DRAWING MUST BE CHECKED, SIGNED AND RETURNED TO THE APPROPRIATE FACTORY. PLEASE VERIFYING THE FOLLOWING:
 1. ALL DIMENSIONAL INFORMATION, MOUNTING POSITIONS
 2. THE LOCATION AND TYPE OF COOKING EQUIPMENT.
 NOTE TO APPROVER:
 ANY CHANGES IN COOKING EQUIPMENT SUCH AS INCREASED ENERGY INPUTS OR EQUIPMENT POSITION MAY AFFECT EXHAUST AIRFLOW. HALTON MUST BE NOTIFIED IF ANY OF THESE CHANGES OCCUR. A RECALCULATION EXHAUST AIRFLOW MAY BE REQUIRED.
 REVISE AND RESUBMIT
 APPROVED FOR FABRICATION
 WITH NO CHANGES
 WITH CHANGES AS NOTED
 APPROVED BY: _____ DATE: _____



REV.	DESCRIPTION	BY	DATE
1			
2			
3			
4			
5			
6			
7			

PROJECT: CFA S08 V6 CENTERLINE
 LOCATION: Lumberton, NC (SN#2795)
 DRAWN BY: DATE: 1/10/12
 SCALE: NTS
 Halton Dwg: U10-391-2 (PROTOTYPICAL)

MAIL APPROVED DRAWINGS TO APPROPRIATE FACTORY BELOW: WEBSITE: WWW.HALTONCOMPANY.COM
 HALTON CO. (CANADA) 1021 BREVIK PLACE MISSISSAUGA, ON L4W 3R7 1-905-624-0301
 HALTON CO. (USA) 101 INDUSTRIAL DRIVE SCOTTSVILLE, KY 42164 1-270-257-5600

Sheet H-1.2

Halton
 CARE FOR INDOOR AIR