

SIGNATURE DATE: 10/24/2025

H & B
HOSS & BROWN ENGINEERS
15902 Midland Drive
Shawnee, Kansas 66217
913.362.9090 | mail@h-b-e.com
© Hoss & Brown Engineers 2025

QuikTrip No. 1756
2925 Browns Bridge Road
Gainesville, Georgia



© QUIKTRIP CORPORATION 2025. ALL RIGHTS RESERVED. REPRODUCTION, PUBLICITY, DISTRIBUTION OR SALE IN WHOLE OR IN PART, IS STRICTLY PROHIBITED.

| | |
|-----------|------------|
| PROTOTYPE | Fryer |
| DIVISION | Atlanta |
| VERSION | G3SE |
| DATE | 06-18-2025 |

| REV | DATE | DESCRIPTION |
|-----|------|-------------|
| | | |
| | | |
| | | |
| | | |
| | | |
| | | |
| | | |
| | | |
| | | |

ORIGINAL ISSUE DATE: 10/24/2025

SHEET TITLE:
MECHANICAL DUCTWORK CEILING PLAN - DEMO

SHEET NUMBER:
M101

- 1 REMOVE KITCHEN HOOD SYSTEM AND ALL ASSOCIATED GREASE DUCT BETWEEN HOOD AND EXHAUST FAN ON ROOF. REMOVE HOOD SUPPLY PLENUM DUCT BACK TO RTU SUPPLY MAIN AND CAP AND PATCH AS REQUIRED. RE: M102.
- 2 REMOVE ROOF MOUNTED EXHAUST FAN AND ALL ASSOCIATED DUCT WORK.
- 3 EXISTING TEMPERATURE SENSOR AND HUMIDITY SENSOR SERVING KITCHEN RTU TO REMAIN, SHOWN FOR REFERENCE.
- 4 EXISTING ROOF EQUIPMENT TO REMAIN, SHOWN FOR REFERENCE.
- 5 REMOVE DIFFUSER/GRILLE AND MAINTAIN EXISTING DUCT WORK FOR NEW WORK.

BUILDING CODES:
2018 INTERNATIONAL MECHANICAL CODE WITH GEORGIA AMENDMENTS

A1 MECHANICAL DUCTWORK CEILING PLAN - DEMO



A10 BUILDING CODES

A13 PLAN NOTES



SIGNATURE DATE: 10/24/2025

H & B ENGINEERS
HOSS & BROWN
 15902 Midland Drive
 Shawnee, Kansas 66217
 913.362.9090 | mail@h-b-engineers.com
 © Hoss & Brown Engineers 2025

QuikTrip No. 1756
 2925 Browns Bridge Road
 Gainesville, Georgia



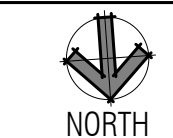
| | |
|-----------|------------|
| PROTOTYPE | Fryer |
| DIVISION | Atlanta |
| VERSION | G3SE |
| DATE | 06-18-2025 |

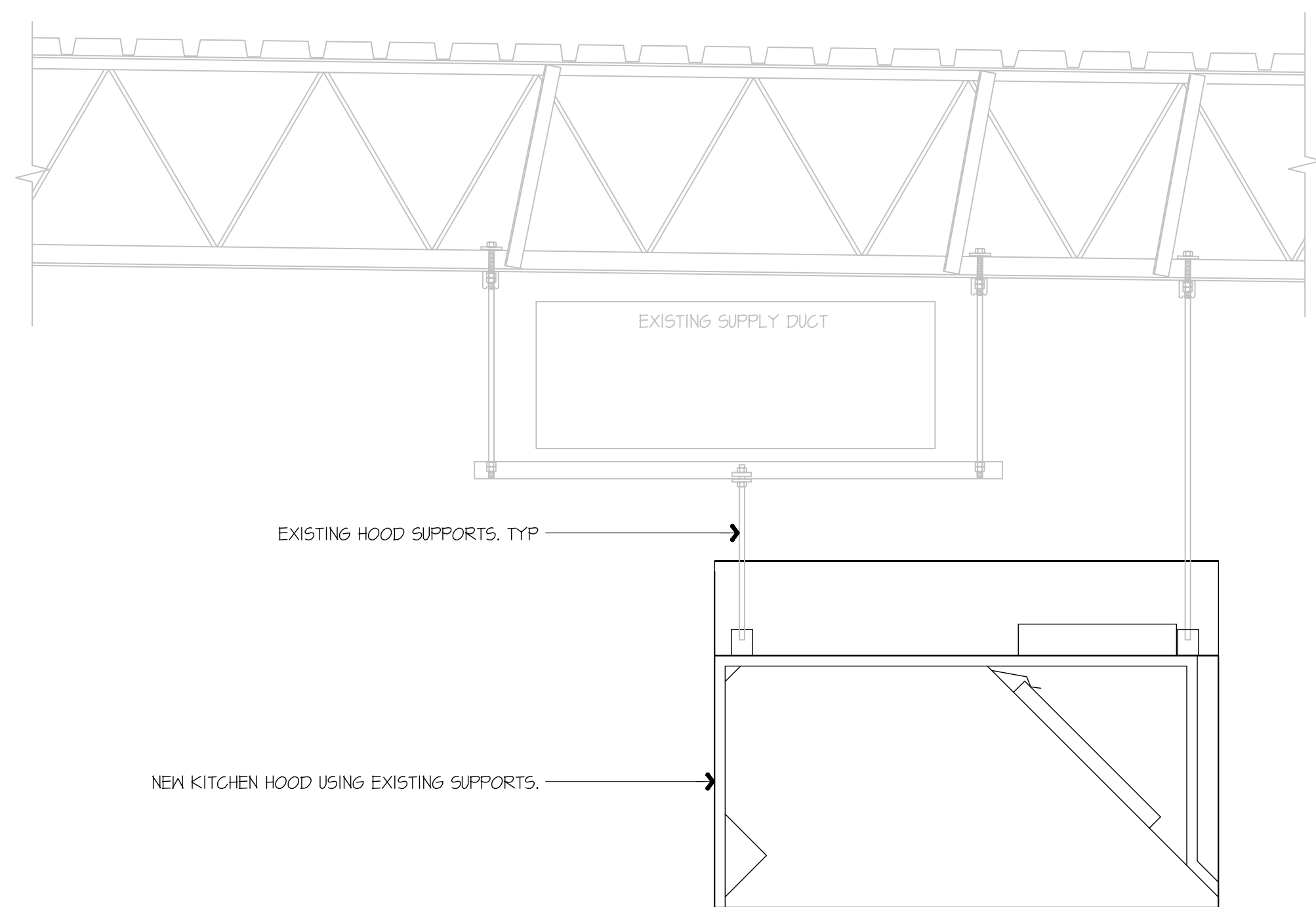
- 1 INSTALL NEW OWNER-FURNISHED TYPE-I KITCHEN HOOD EXHAUST SYSTEM, FIRE SUPPRESSION SYSTEM, GREASE DUCT, AND ALL OTHER REQUIREMENTS FOR A TYPE-I SYSTEM. INSTALL HOOD CONTROL PANEL, TEMPERATURE SENSOR(S), AND HUMIDITY SENSOR(S) WITHIN HOOD UTILITY CABINET ACCORDING TO MANUFACTURER'S INSTALLATION REQUIREMENTS.
- 2 INSTALL NEW OWNER-FURNISHED ROOF-MOUNTED EXHAUST FAN. MAINTAIN MINIMUM 10'-0" SEPARATION BETWEEN ROOF TERMINATION AND ANY NEARBY RTU INTAKE OR ROOF EDGE. INSTALL 12" GREASE DUCT TO ROOF-MOUNTED FAN. EXTEND HOOD COLLAR. BALANCE TO AIRFLOW RATE SCHEDULED ON M601. COORDINATE WITH ELECTRICAL CONTRACTOR FOR FAN CONTROLS BETWEEN HOOD AND FAN. RE: QT INSTALL DRAWINGS AND HOOD MANUFACTURER'S INSTRUCTIONS.
- 3 INSTALL OWNER-FURNISHED HOOD SUPPRESSION PUSH STATION PER MANUFACTURER'S INSTALLATION REQUIREMENTS. RE: F4-ES01 FOR ELEVATION.
- 4 EXISTING ROOF EQUIPMENT TO REMAIN, SHOWN FOR REFERENCE. RE: G1-M601 TO RE-BALANCE AIRFLOWS AS REQUIRED.
- 5 EXISTING TEMPERATURE SENSOR AND HUMIDITY SENSOR SERVING KITCHEN RTU TO REMAIN, SHOWN FOR REFERENCE.
- 6 PROVIDE EXHAUST GRILLE ABOVE COMBI OVENS AND PROVIDE DUCT AS SHOWN TO TAP INTO EXISTING RESTROOM EXHAUST DUCT. RE: G1-M601 FOR MORE INFORMATION.
- 7 RE-BALANCE EXISTING DIFFUSER/GRILLE TO AIRFLOW SHOWN ON PLAN. RE: M601.
- 8 PROVIDE DIFFUSER/GRILLE AS SCHEDULED AND RECONNECT TO EXISTING DUCT MAINTAINED DURING DEMOLITION. RE-BALANCE TO AIRFLOW SHOWN ON PLAN. RE: M601.

| REV | DATE | DESCRIPTION |
|-----|------|-------------|
| | | |
| | | |
| | | |
| | | |
| | | |
| | | |
| | | |
| | | |
| | | |
| | | |

SHEET TITLE:
 MECHANICAL
 DUCTWORK
 CEILING PLAN - NEW

SHEET NUMBER:
M102

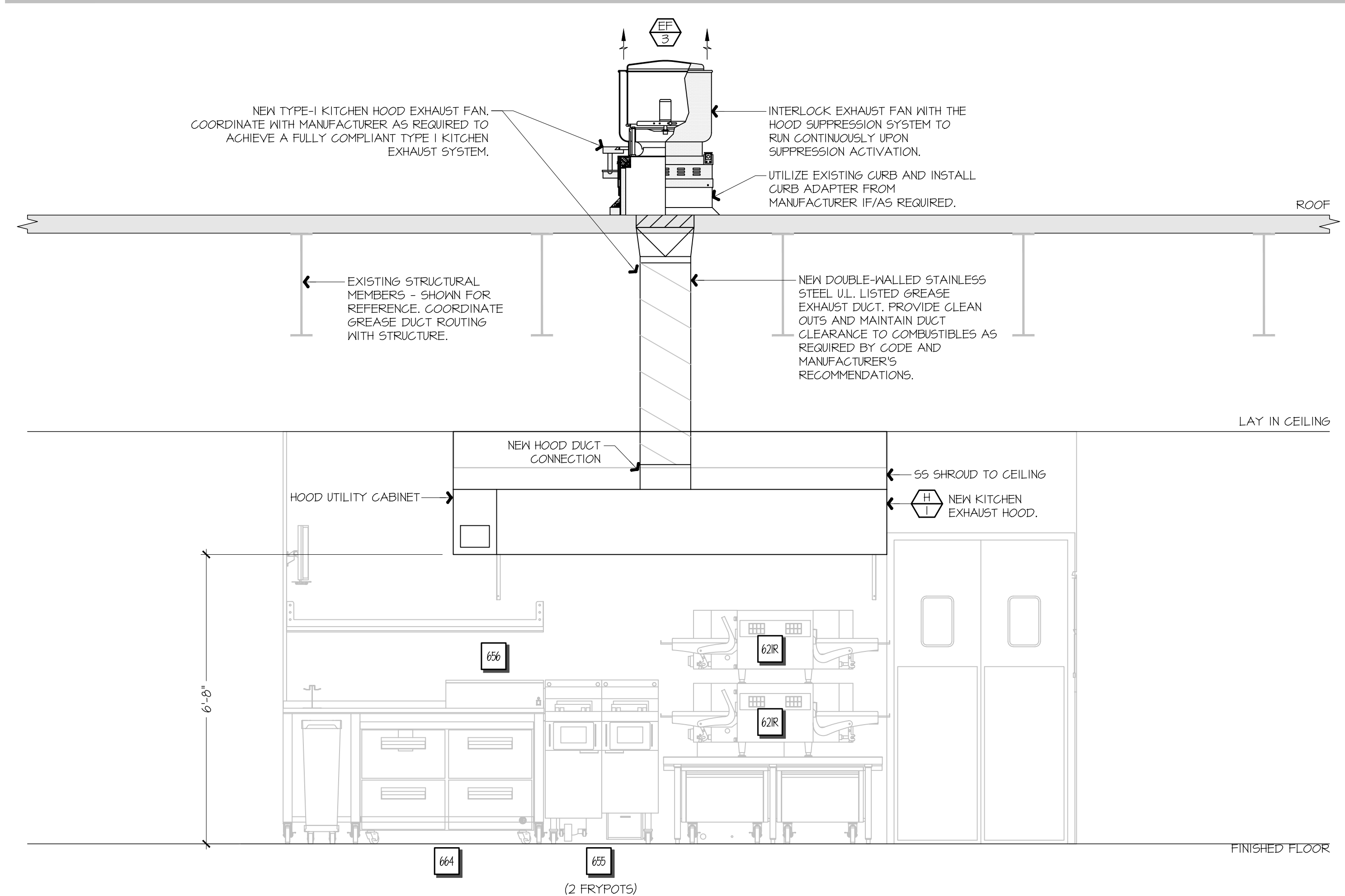




F1 KITCHEN EXHAUST HOOD SUPPORT DETAIL

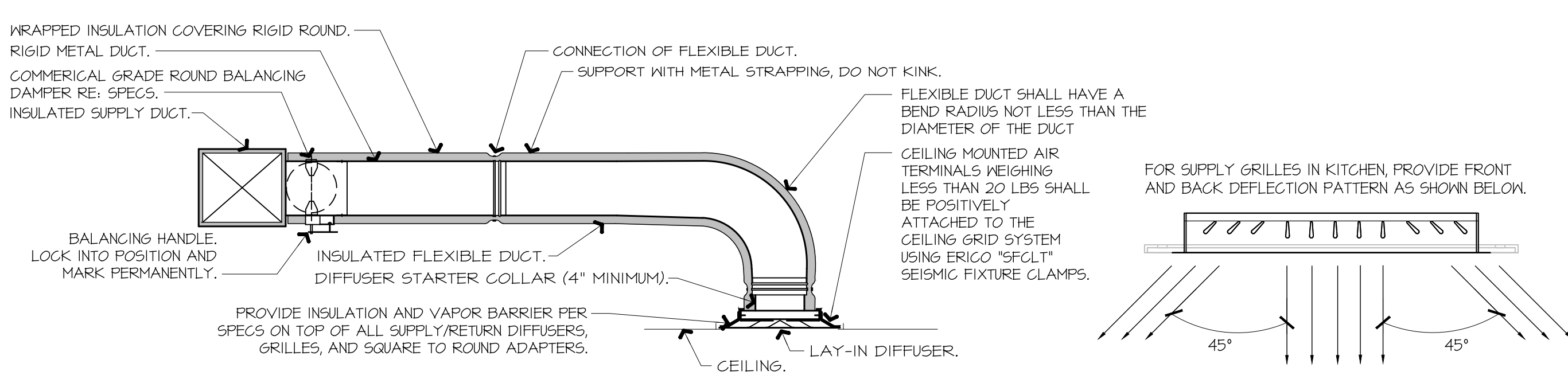
NOT TO SCALE

GENERAL NOTES:
 KITCHEN EXHAUST HOOD SHALL BE TYPE-I RATED FOR MEDIUM DUTY COOKING APPLIANCES THAT PRODUCE GREASE OR SMOKE AS A RESULT OF THE COOKING PROCESS. HOOD SHALL BE PROVIDED WITH AUTOMATIC FIRE SUPPRESSION SYSTEM INTERLOCKED WITH EQUIPMENT SHUTDOWN CONTROLS. HOOD SHALL BE PROVIDED WITH UL 1046 GREASE FILTERS. HOOD SHALL BE LISTED IN ACCORDANCE WITH UL1010. HOOD SHALL BE LISTED AND LABELED FOR 0" CLEARANCE REQUIREMENTS TO COMBUSTIBLES.
 HEAT AND MOISTURE LOADS FOR APPLIANCES THAT DO NOT PRODUCE GREASE OR SMOKE AS A RESULT OF THE COOKING PROCESS AND ARE NOT LOCATED UNDER THE HOOD, HAVE BEEN INCORPORATED INTO THE HVAC SYSTEM CAPACITY SERVING THE KITCHEN.
 ALL OVENS NOT LOCATED UNDERNEATH A HOOD ARE UL1010 LISTED FOR VENTLESS OPERATION.
SEQUENCE OF OPERATION:
 THE FOLLOWING KITCHEN EQUIPMENT SHALL BE INTERLOCKED WITH CURRENT TRANSFORMERS THAT AUTOMATICALLY ACTIVATE THE HOOD EXHAUST FAN UPON THE KITCHEN EQUIPMENT BEING ENERGIZED: [621] PIZZA OVENS, [648] COMBI OVENS, [647] STEAM DRAWER, [655] FRYER, [656] FRY HOLDING STATION.
 AS HOOD EXHAUST FAN ENERGIZES, RTU'S SHALL MODULATE OUTSIDE AIR TO MAINTAIN BUILDING PRESSURIZATION. RE: M601.
 HEAT SENSORS SHALL BE PROVIDED WITHIN HOOD CANOPY FOR TEMPERATURE AND HUMIDITY MONITORING. RE: MANUFACTURER DRAWINGS.
 UPON ACTIVATION OF THE FIRE SUPPRESSION SYSTEM, ALL EQUIPMENT LOCATED UNDER THE HOOD SHALL BE SHUTDOWN VIA CONTACTORS LOCATED WITHIN THE HOOD UTILITY CABINET, AND RTU SERVING KITCHEN SPACE SHALL BE AUTOMATICALLY SHUTDOWN. RE: A13-E601.



F9 FSC REAR WALL ELEVATION - NEW

1/2" = 1'-0"



NOTES:
 1. PROVIDE AT FLEXIBLE DUCT CONNECTION METAL OR "PANUIT" DRAMBAND ON THE INTERIOR FLEXIBLE DUCT HELIX. SECURE THE INSULATION OVER THE DRAMBAND WITH AN ADDITIONAL DRAMBAND.
 2. PROVIDE BEADING ON ROUND METAL DUCT 12" OR LARGER IN DIAMETER.
 3. PROVIDE MINIMUM 4" COLLARS FOR ATTACHMENT OF THE FLEX DUCT TO ROUND DUCT, DAMPERS AND DIFFUSERS.
 4. BAND RIGID ROUND DUCT INSULATION TO DUCT AND PROVIDE FIBER REINFORCED FOIL BACKED TAPE FOR INSULATION OVERLAP.

A9 DIFFUSER CONNECTION DETAIL

NOT TO SCALE

A1 NOT USED



SIGNATURE DATE: 10/24/2025

H & B ENGINEERS
HOSS & BROWN
 15902 Midland Drive
 Shawnee, Kansas 66217
 913.362.9090 | mail@h-b.com
 © Hoss & Brown Engineers 2025

QuikTrip No. 1756
 2925 Browns Bridge Road
 Gainesville, Georgia



© QUIKTRIP CORPORATION 2025. ALL RIGHTS RESERVED. REPRODUCTION, PUBLICITY, DISTRIBUTION OR SALE IN WHOLE OR IN PART, IS STRICTLY PROHIBITED.

| | |
|-----------|------------|
| PROTOTYPE | Fryer |
| DIVISION | Atlanta |
| VERSION | G3SE |
| DATE | 06-18-2025 |

| REV | DATE | DESCRIPTION |
|-----|------|-------------|
| | | |
| | | |
| | | |
| | | |
| | | |
| | | |
| | | |
| | | |
| | | |
| | | |

ORIGINAL ISSUE DATE: 10/24/2025

SHEET TITLE:
 MECHANICAL SECTIONS & DETAILS

SHEET NUMBER:
M501

HOOD INFORMATION - JOB#7284466

| HOOD NO | TAG | MODEL | MANUFACTURER | LENGTH | MAX COOKING TEMP | TYPE | APPLIANCE DUTY | DESIGN CFM/FT | TOTAL EXH CFM |
|---------|-----|-----------|--------------|--------|------------------|------|----------------|---------------|---------------|
| 1 | | 6030 ND-2 | CAPTIVEAIRE | 9' 0" | 450 DEG | I | MEDIUM | 150 | 1350 |

| EXHAUST PLENUM | | | | | | | | | |
|----------------|------|--------|---------|------|------|---------|----|----------------------|-------------|
| WIDTH | LENG | HEIGHT | RISE(R) | DIA | CFM | VEL | SP | HOOD CONSTRUCTION | HOOD CONFIG |
| | | 4" | 12" | 1350 | 1718 | -0.540" | | 430 95 WHERE EXPOSED | ALONE |

FIRE SYSTEM INFORMATION - JOB#7284466

| FIRE SYSTEM NO | TAG | TYPE | SIZE | MAX FP | DESIGN FP | INSTALLATION |
|----------------|-----|---------|------|--------|-----------|--------------------------------|
| 1 | | TANK FS | 4.0 | 20 | 20 | FIRE CABINET LEFT LEFT, HOOD I |

HOOD INFORMATION

| HOOD NO | TAG | TYPE | QTY | HEIGHT | LENGTH | EFFICIENCY @ 7 MICRONS | QTY | TYPE | WIRE GUARD | AVERAGE FOOT CANDLES @ 36" AFF | LOCATION | SIZE | TYPE | UTILITY FIRE SYSTEM | ELECTRICAL | SWITCHES | FIRE SYSTEM PIPING | HOOD HANGING WEIGHT |
|---------|-----|----------------------|-----|--------|--------|------------------------|-----|----------------|------------|--------------------------------|----------|---------------|---------|---------------------|------------|------------------|--------------------|---------------------|
| 1 | | CAPTRATE SOLO FILTER | 6 | 20" | 16" | 85% SEE FILTER SPEC | 6 | RECESSED ROUND | NO | 66 | LEFT | 12"x6.0"x3.0" | TANK FS | 4.0 | DCV-1011 | 1 LIGHT 1 FAN | YES | 88T LBS |

HOOD OPTIONS

| HOOD NO | TAG | OPTION |
|---------|-----|---|
| 1 | | FIELD WRAPPER 11.00" HIGH FRONT, LEFT, RIGHT, RIGHT END STANDOFF (FINISHED) 1" WIDE 60" LONG INSULATED. INSULATION FOR TOP OF HOOD. INSULATION FOR BACK OF HOOD. SENSOR-CV. |

*6" CLEARANCE ABOVE HOOD REQUIRED FOR FIRE SYSTEM PIPING.

RECESSED ROUND LED FIXTURE AND LED LIGHT, 3500 K WARM OUTPUT.

*24" CLEARANCE ABOVE HOOD RECOMMENDED FOR SERVICEABILITY.

1" LAYER OF INSULATION FACTORY INSTALLED ON TOP OF HOOD, MEETS 0 INCH REQUIREMENTS FOR CLEARANCE TO COMBUSTIBLE SURFACES.

EXHAUST RISER.

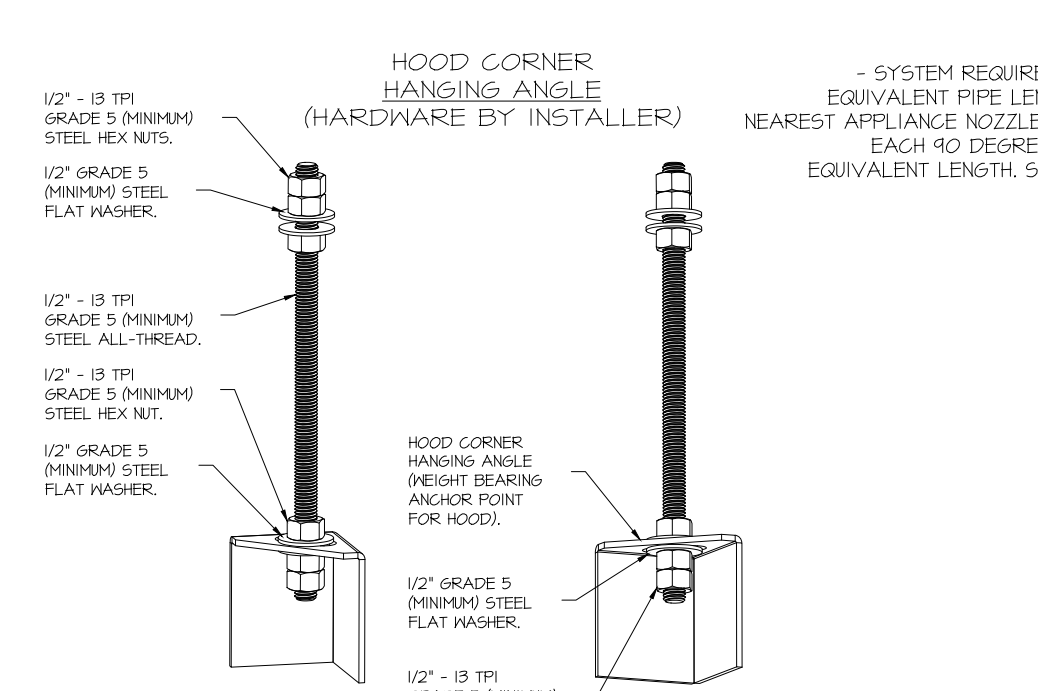
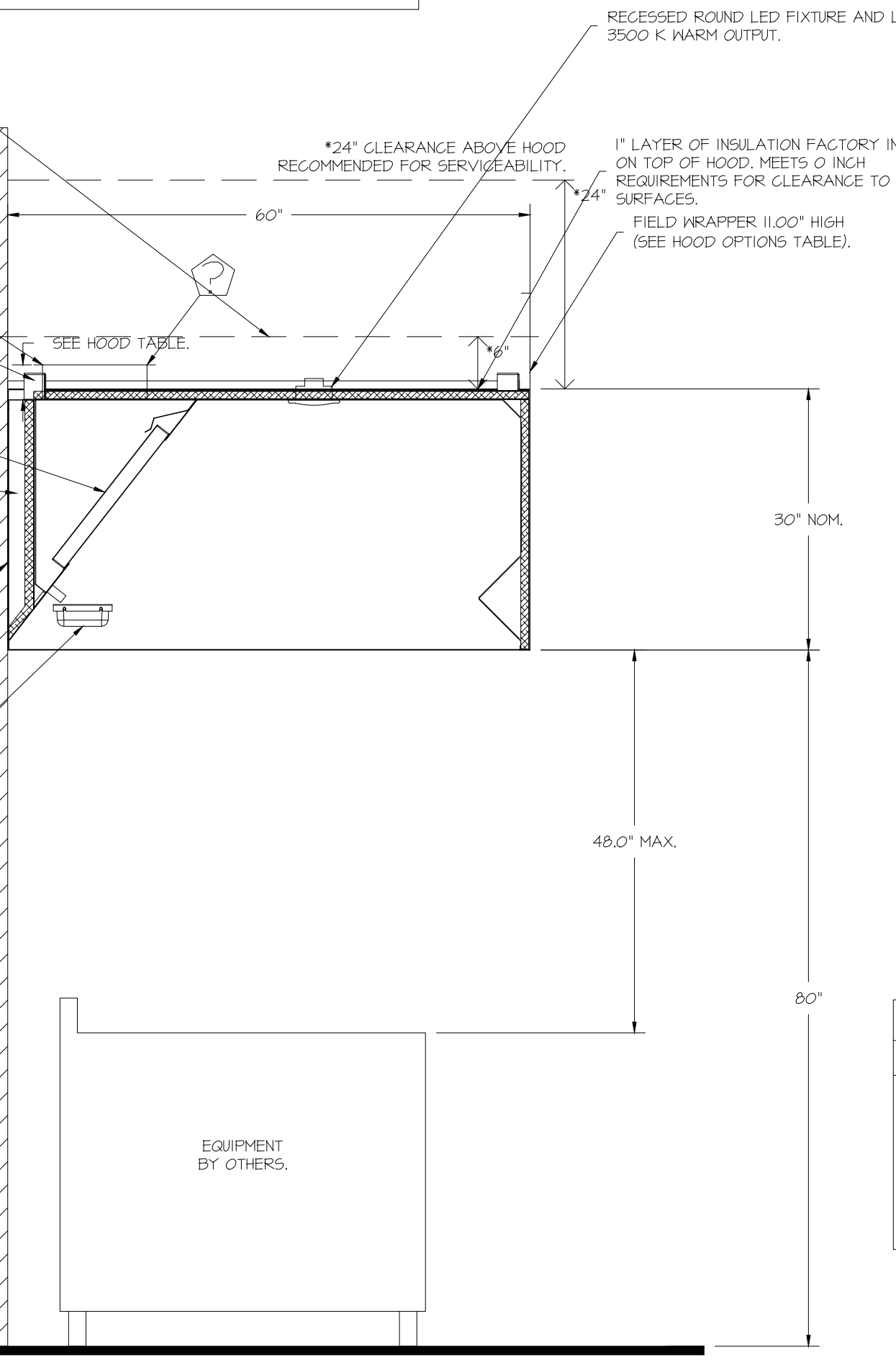
HANGING ANGLE.

20" CAPTRATE SOLO FILTER WITH HOOK.

1" LAYER OF INSULATION FACTORY INSTALLED IN 3" INTERNAL STANDOFF, MEETS 0 INCH REQUIREMENTS FOR CLEARANCE TO COMBUSTIBLE SURFACES.

IT IS THE RESPONSIBILITY OF THE ARCHITECT/OWNER TO ENSURE THAT THE HOOD CLEARANCE FROM LIMITED-COMBUSTIBLE AND COMBUSTIBLE MATERIALS IS IN COMPLIANCE WITH LOCAL CODE REQUIREMENTS.

GREASE DRAIN WITH REMOVABLE CUP.



ASSEMBLY INSTRUCTIONS

HANGING ANGLE MUST BE SUPPORTED WITH 1/2" - 13 TPI GRADE 5 (MINIMUM) ALL-THREAD, SANDWICH HANGING ANGLES AND CEILING ANCHOR POINTS WITH 1/2" GRADE 5 (MINIMUM) STEEL FLAT WASHERS AND 1/2" - 13 TPI GRADE 5 (MINIMUM) HEX NUTS AS SHOWN. MUST USE DOUBLED HEX NUT CONFIGURATION BENEATH HOOD HANGING ANGLES AND ABOVE CEILING ANCHORS. MAINTAIN 1/4" OF EXPOSED THREADS BENEATH BOTTOM HEX NUT. TORQUE ALL HEX NUTS TO 57 FT-LBS.

| HOODS # | SURFACE | *CLEARANCE |
|---------|---------|------------|
| 1 | TOP | 0" |
| 1 | FRONT | 0" |
| 1 | BACK | 0" |
| 1 | LEFT | 0" |
| 1 | RIGHT | 0" |

*0" CLEARANCE TO COMBUSTIBLES CONFORMS TO UL710 STANDARD.

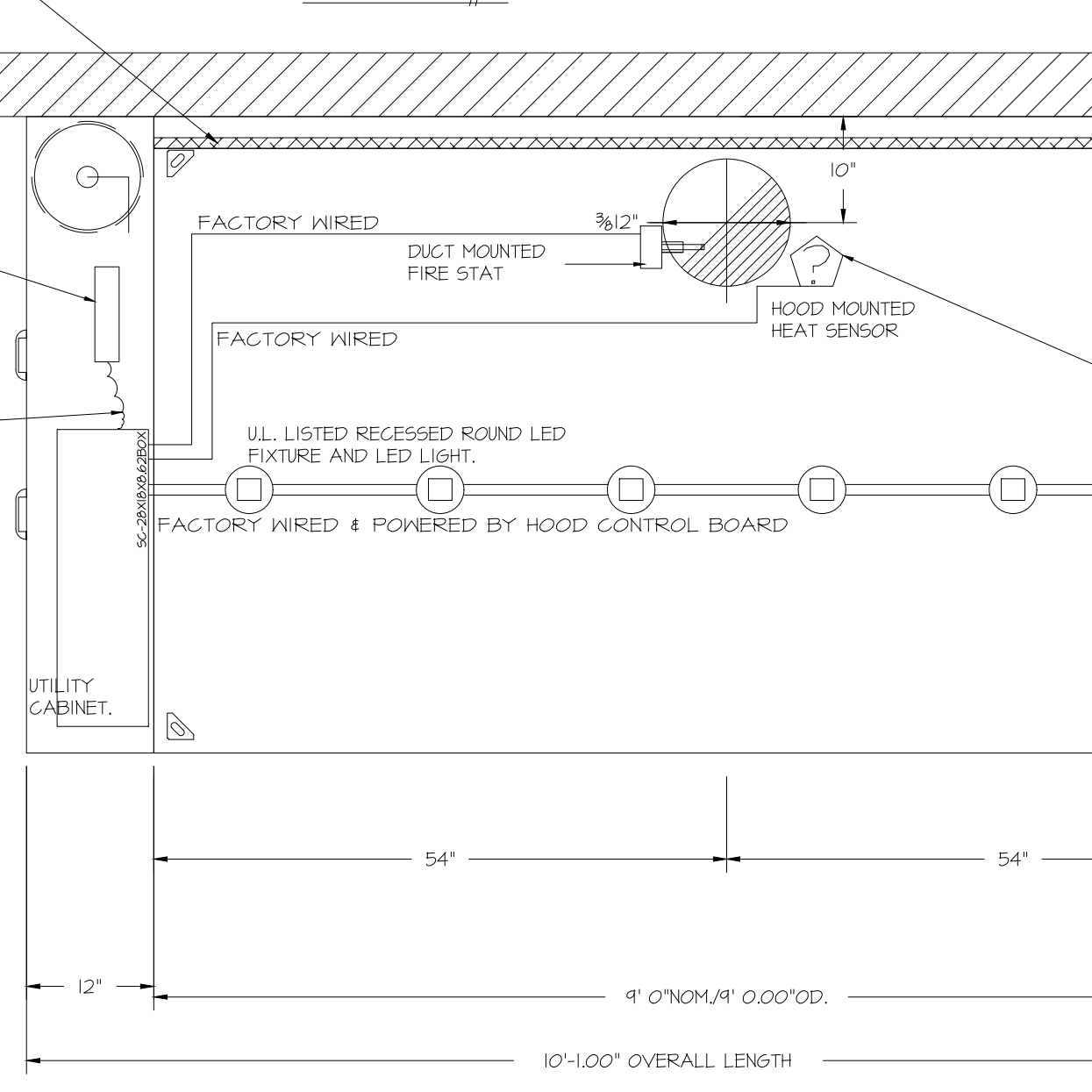
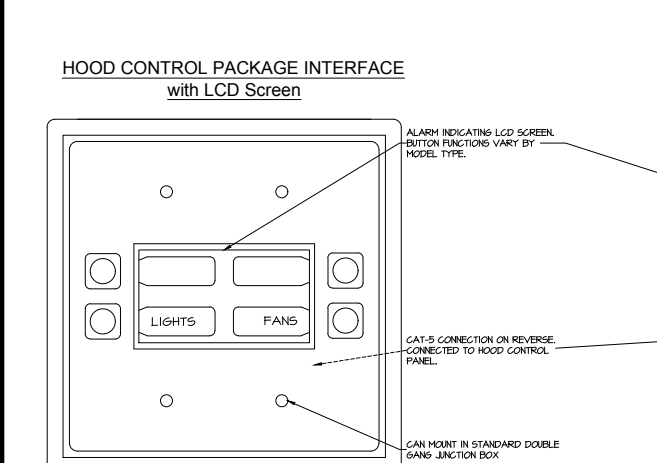
HOOD MOUNTED UTILITY CABINETS REQUIRE 36" SERVICE CLEARANCE.

1" LAYER OF INSULATION FACTORY INSTALLED IN INTERNAL BACK STANDOFF, MEETS 0 INCH REQUIREMENTS FOR CLEARANCE TO COMBUSTIBLE SURFACES.

SECTION VIEW - MODEL 6030ND-2 HOOD - #1

HOOD CONTROL PACKAGE INTERFACE WITH LED SCREEN

LEAVE LOOSE IN CABINET FOR QT-FS



ROOM TEMPERATURE SENSOR

Provides room override based on temperature differential between the room and duct. Installed by electrician on a wall, 5'-6" off the finished floor, in the space but not directly under the hood or close to an appliance (including the electrical control box) or near HVAC register so that the reading is accurate for space.

DUCT TEMPERATURE SENSOR (TYPICAL)

Provides exhaust air temperature for proper hood control operation. For all installations excluding a single hood with factory riser and a hood mounted panel, duct mounted temperature sensors will need to be field wired. 2-wire 18 AWG plenum rated thermostat cable must be used.

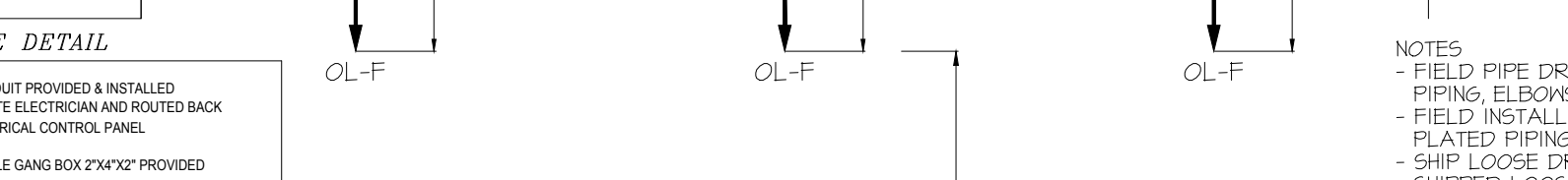
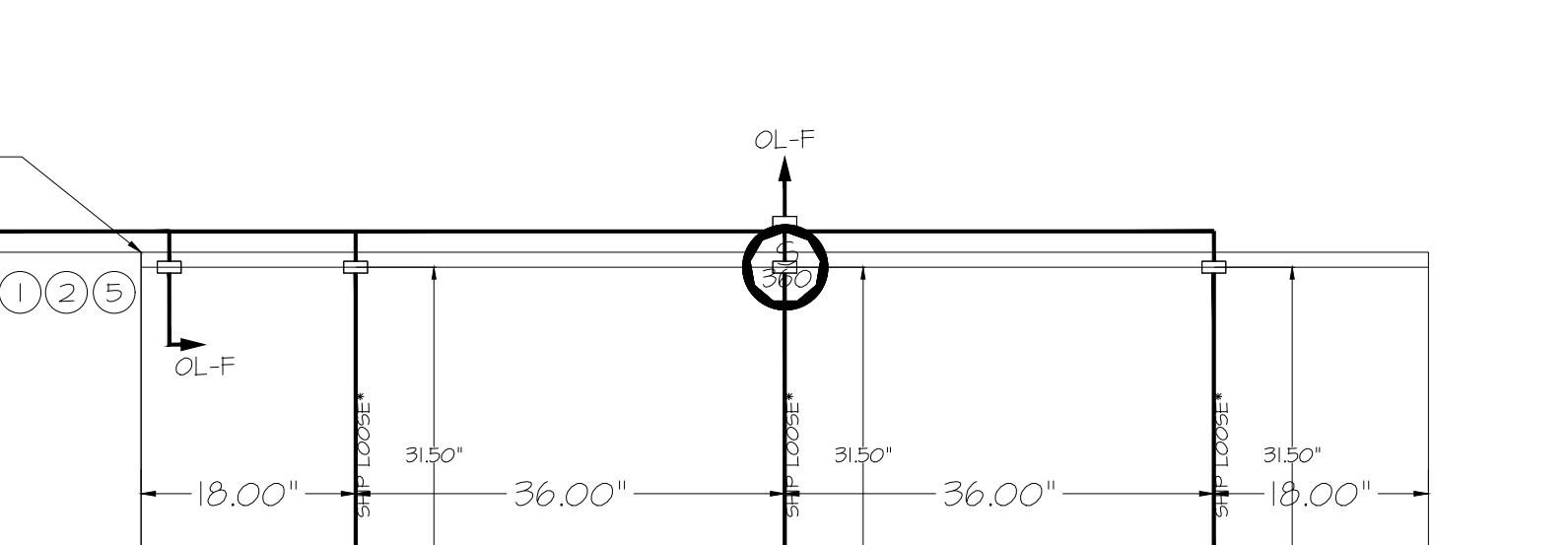
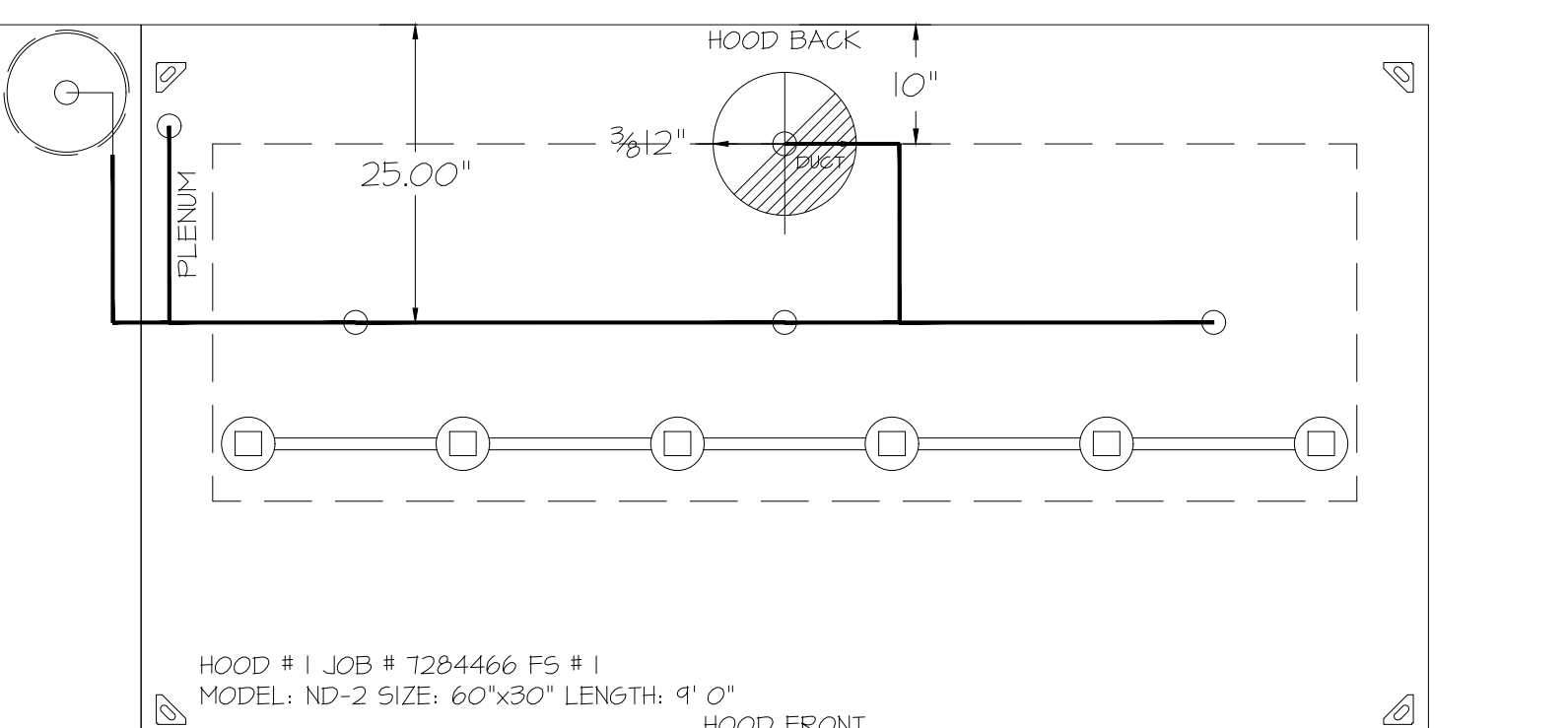
PLAN VIEW - HOOD #1 9' 0.00" LONG 6030ND-2

CAPTIVE-AIRE HOODS ARE BUILT IN COMPLIANCE WITH

NSF NFFPA #96 NSF E.T.L. LISTED 3054804-001 TO UL 710 & ULCT10 STANDARDS

FIRE SYSTEM PARTS LIST KEY

| FIRE SYSTEM NO | TAG | KEY NUMBER - PART DESCRIPTION | QTY BY FACTORY | QTY BY DIST |
|----------------|-----|---|----------------|-------------|
| 0 | 0 | TANK FIRE SUPPRESSION POST-DISCHARGE PROCEDURE UTILITY CABINET LABEL SHEET. | 1 | 0 |
| 0 | 0 | TANK FIRE SUPPRESSION MAINTENANCE GUIDE UTILITY CABINET LABEL SHEET. | 1 | 0 |
| 0 | 0 | 12-F28021-32144-01-360 DUCT FIRE THERMOSTAT WITH 12 FOOT WIRE LEADS. NO. CLOSE ON TEMP RISE AT 360°F. (A0094310). | 1 | 0 |
| 0 | 0 | 32-00002 QUIK SEAL - 1/2" (UL) | 1 | 0 |
| 0 | 0 | 442K153 1/2" MALE NPT TO 1/2" FEMALE NPT ELBOW BRASS. | 1 | 0 |
| 0 | 0 | 442K422 1/2" X 1/4" BRASS REDUCING BUSHING. | 1 | 0 |
| 0 | 0 | 78525 1/2" 40 PRO-PRESS ELBOW WITH 1/2" ANPT FEMALE CONNECTION, VIEGA. | 1 | 0 |
| 0 | 0 | 78680 1/2" X 1/2" PRO-PRESS TEE X 1/2" ANPT FEMALE CONNECTION, VIEGA. | 1 | 0 |
| 0 | 0 | 81-30001-001 TANK - PRESSURIZED TANK USED FOR TANK FIRE SUPPRESSION. | 1 | 0 |
| 0 | 0 | 81-30003-001 PRIMARY ACTUATOR KIT (PAK) - ACTUATOR AND RELEASE SOLENOID ASSEMBLY, ONE NEEDED PER FIRE SYSTEM SUPERVISED, TANK FIRE SUPPRESSION. | 1 | 0 |
| 0 | 0 | 81-30003-001 DIN CONNECTOR, GANFIELD PART #5,560-201-EU0A, TANK FIRE SUPPRESSION, SUBMERSIBLE SOLENOID CONNECTION (SEE VENDOR 30371). | 1 | 0 |
| 0 | 0 | 81-30003-001 HARDWARE, SVA BOLTS, TANK FIRE SUPPRESSION. | 4 | 0 |
| 0 | 0 | 4055459C PRO PRESS 1/2 PRESS X PRESS 90 ELBOW LD. | 4 | 0 |
| 0 | 0 | 401200C PRO PRESS PC611 1/2 PRESS TEE LD. | 4 | 0 |
| 0 | 0 | 48644A15 HARDWARE, DATANLOCK LOCKING BRACKET SQUARE NUTS 5/16" ZINC, TANK FIRE SUPPRESSION. | 2 | 0 |
| 0 | 0 | A0024593 JUNCTION BOX FOR MANUAL PULL STATION, 15" DEEP BACK BOX, RED COLOR. | 1 | 0 |
| 0 | 0 | A31484 1/4" NPT SCHROEDER VALVE AND CAP, JB INDUSTRIES, 1/4" FLARE X 1/4" MPT HALF UNION, USED ON TANK SERVICE PORT. | 1 | 0 |
| 0 | 0 | B145 3/8" BLACK IRON 40 ELL. | 2 | 0 |
| 0 | 0 | DATANLOCK DISCHARGE ADAPTER, TANK LOCKING PLATE FOR FIRE SYSTEM TANK INSTALLATION IN UTILITY CABINETS, TANK FIRE SUPPRESSION. | 1 | 0 |
| 0 | 0 | TANK STRAP TANK STRAP - USED FOR TANK FIRE SUPPRESSION. | 3 | 0 |
| 0 | 0 | TANK BRACKET TANK BRACKET FOR FIRE SYSTEM TANK INSTALLATION IN UTILITY CABINETS, TANK FIRE SUPPRESSION. | 1 | 0 |
| 0 | 0 | PRC-283952-000 DISCHARGE ADAPTER, TANK FIRE SUPPRESSION. | 1 | 0 |
| 16 | 16 | 14210 1/2" X 3/8" NPT MALE ADAPTER, VIEGA. | 5 | 0 |
| 16 | 16 | OL-F NOZZLE - TANK PROTECTION APPLIANCE COVERAGE NOZZLE (INCLUDES METAL BLOW OFF CAP, LANTARD, USED WITH CHROME-PLATED PIPE). | 5 | 0 |
| 26 | 26 | 05A-3/8 QUIK SEAL - 3/8" (UL) | 5 | 0 |
| 34 | 34 | A0034818 2-WIRE SINGLE ACTION MANUAL ACTUATION DEVICE (PUSH/PULL STATION) WITH PROTECTIVE COVER, ONE (1) NORMALLY OPEN CONTACT, RED COLOR. | 1 | 0 |



NOTES

- FIELD PIPE DROPS AS SHOWN
- PIPING, ELBOWS, TEES, AND NOZZLES SUPPLIED BY GAS.
- FIELD INSTALLED DROPS: FACTORY WILL PROVIDE QTY 2 60IN LONG PIECES OF CHROME PLATED PIPING SHIPPED LOOSE TO BE FIELD-INSTALLED.
- SHIP LOOSE DROPS: FACTORY WILL PROVIDE THE EXACT CHROME PIPE LENGTH NEEDED SHIPPED LOOSE TO BE FIELD-INSTALLED.
- RELOCATE NOZZLES IF FLOW PATTERN IS BLOCKED BY SHELVING, SALAD BAR, ETC.
- OVERLAPPING COVERAGE SHALL NOT BE USED ON ANY APPLIANCE WITH AN OBSTRUCTION.
- IF APPLICABLE, EXTENDED FIRE-PIPED DROPS ARE SHIPPED LOOSE.
- FACTORY PIPING EXTENDS A MAXIMUM OF 6' ABOVE THE TOP OF THE HOOD.
- APPLIANCE DIMENSIONS LISTED REPRESENT THE COOKING SURFACE SIZE, NOT THE OVERALL APPLIANCE SIZE.
- THIS PRE-ENGINEERED FIRE SYSTEM COMPLIES WITH UL 300 REQUIREMENTS.
- OL-F NOZZLE PART NUMBER REPLACES 3070-3/8H-10-SS
- JOB #: 7284466.
- JOB NAME: QT - G3 NEW STORE PKG GOING FORWARD (DW) (450F).
- SYSTEM SIZE: TANK-SP-1 DESIGN FP: 20, MAXIMUM FP: 20.
- HOOD # 1 1' 0.00" LONG x 60" WIDE x 30" HIGH.
- RISER # 1 SIZE: 12" DIA.
- HOOD # 1 METAL BLOW-OFF CAPS INCLUDED.
- HEAVY-DUTY APPLIANCES (RATED 600%F) WILL REQUIRE AN ADDITIONAL DOWNSTREAM FIRESTAT IN THE EVENT THAT THE DUCTWORK CONTAINS ANY HORIZONTAL RUNS OVER 25 FT. IN LENGTH.
- MEDIUM TO LIGHT-DUTY APPLIANCES (RATED 450%F) WILL NOT REQUIRE ANY ADDITIONAL DOWNSTREAM DETECTION.

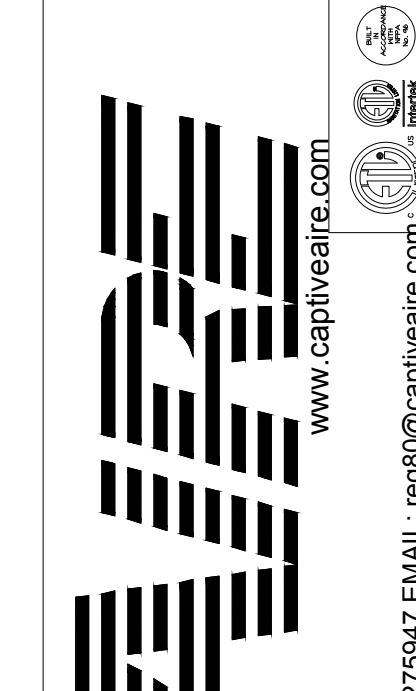
LEGEND - FIRE CABINET TANK SYSTEM

| AGENT DISTRIBUTION PIPING LIMITATIONS | MAX PIPE LENGTH (FT) |
|---|----------------------|
| PIPE SECTION | MAX PIPE LENGTH (FT) |
| MAX SUPPLY LINE TO FIRST OVERLAPPING NOZZLE | 42 |
| OVERLAPPING NOZZLE APPLIANCE BRANCH | 10 |
| DEDICATED NOZZLE APPLIANCE BRANCH | 10 |

- 4 GALLON TANK.
- PRIMARY ACTUATOR RELEASE.
- SECONDARY ACTUATOR RELEASE.
- PRESSURE SUPERVISION SWITCH.
- PRIMARY HOSE ASSEMBLY.
- SECONDARY HOSE ASSEMBLY.
- REMOTE MANUAL ACTUATION DEVICE.

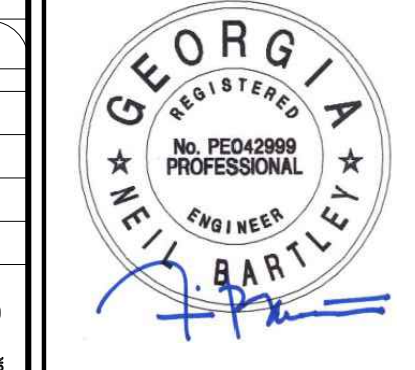
REVISIONS

| NO. | DESCRIPTION | DATE |
|-----|-------------|------|
| | | |



Tulsa Office

12101 East 51st Street, Suite 101A, Tulsa, OK, 74146 PHONE: (918) 258-0251 FAX: 9182275647 EMAIL: reg@captivaire.com



15902 Midland Drive
Shawnee, Kansas 66217
913.362.9090 | info@hb-engineers.com
© Hoss & Brown Engineers 2025

QuikTrip No. 1756

2925 Browns Bridge Road
Gainesville, Georgia

QT - Fryer Addition Remodel Pkg Going Forward (DW) (450F)

Various Locations,
Tulsa, OK, 74136

| REV | DATE | DESCRIPTION |
|-----|------|-------------|
| | | |

| | |
|----------------|--------------|
| DATE: | 4/29/2025 |
| DWG.#: | 7284466 |
| DRAWN BY: | RJH-80 |
| SCALE: | 3/4" = 1'-0" |
| MASTER DRAWING | |

SHEET TITLE:
MECHANICAL HOOD DETAILS

SHEET NUMBER:
M510

EXHAUST FAN INFORMATION - JOB#7284466

| FAN UNIT NO | TAG | QTY | FAN UNIT MODEL # | MANUFACTURER | CFM | ESP | RPM | MOTOR ENCL | HP | BHP | PHASE | VOLT | FLA | DISCHARGE VELOCITY | WEIGHT (LBS) | SONES |
|-------------|------------------|-----|------------------|--------------|------|-------|------|-----------------|-------|--------|-------|------|-----|--------------------|--------------|-------|
| 1 | EF-3 (TYPE I) | 1 | DU50HFA | CAPTIVEAIRE | 1350 | 0.750 | 1543 | TEAO-ECM | 0.500 | 0.3710 | 1 | 208 | 3.8 | 513 FPM | 74 | 16.6 |
| 2 | EF-1 - RR FAN | 1 | DR33HFA | CAPTIVEAIRE | 600 | 0.500 | 1304 | TEAO-ECM | 0.333 | 0.1530 | 1 | 115 | 4.3 | 247 FPM | 58 | 8.8 |
| 3 | TF-1 - TRANS FAN | 1 | GFA 500CA | CAPTIVEAIRE | 350 | 0.500 | 725 | GENERAL PURPOSE | 0.310 | 0.2220 | 1 | 115 | 2.2 | | 35 | N/A |
| 4 | VF-1 - CO2 FAN | 1 | DFA-300-CA | CAPTIVEAIRE | 600 | 0.100 | 1846 | GENERAL PURPOSE | 0.333 | 0.1480 | 1 | 115 | 2.6 | | 12 | 12.9 |

FAN OPTIONS

| FAN UNIT NO | TAG | QTY | DESCRIPTION |
|-------------|------------------|-----|--|
| 1 | EF-3 (TYPE I) | 1 | GREASE BOX |
| | | 1 | FAN BASE CERAMIC SEAL - DU/DR50HFA - SHIP LOOSE - FOR GREASE DUCTS |
| | | 1 | ECM WIRING PACKAGE - EXHAUST - MODBUS CONTROL -M5C- (TELCO), CCM ROTATION |
| | | 1 | 2 YEAR PARTS WARRANTY |
| 2 | EF-1 - RR FAN | 1 | 1 IS-BDD DAMPER |
| | | 1 | ECM WIRING PACKAGE - MANUAL OR 0-10VDC REFERENCE SPEED CONTROL -RTG- (TELCO MOTOR), CCM ROTATION |
| | | 1 | 2 YEAR PARTS WARRANTY |
| 3 | TF-1 - TRANS FAN | 1 | FAN CONTROL - 3 AMP FAN MOUNTED SPEED CONTROL FOR GFA CEILING FANS |
| | | 1 | 2 YEAR PARTS WARRANTY |
| 4 | VF-1 - CO2 FAN | 1 | FAN CONTROL - 3 AMP WHITE SPEED CONTROL FOR GFA CEILING FAN |
| | | 1 | 2 YEAR PARTS WARRANTY |

FAN ACCESSORIES

| FAN UNIT NO | TAG | EXHAUST | | | SUPPLY | | | |
|-------------|------------------|------------|----------------|------------|-----------------------|----------------|------------------|------------|
| | | GREASE CUP | GRAVITY DAMPER | WALL MOUNT | SIDE DISCHARGE DAMPER | GRAVITY DAMPER | MOTORIZED DAMPER | WALL MOUNT |
| 1 | EF-3 (TYPE I) | YES | | | | | | |
| 2 | EF-1 - RR FAN | | YES | | | | | |
| 3 | TF-1 - TRANS FAN | | | | | | | |
| 4 | VF-1 - CO2 FAN | | | | | | | |

CURB ASSEMBLIES

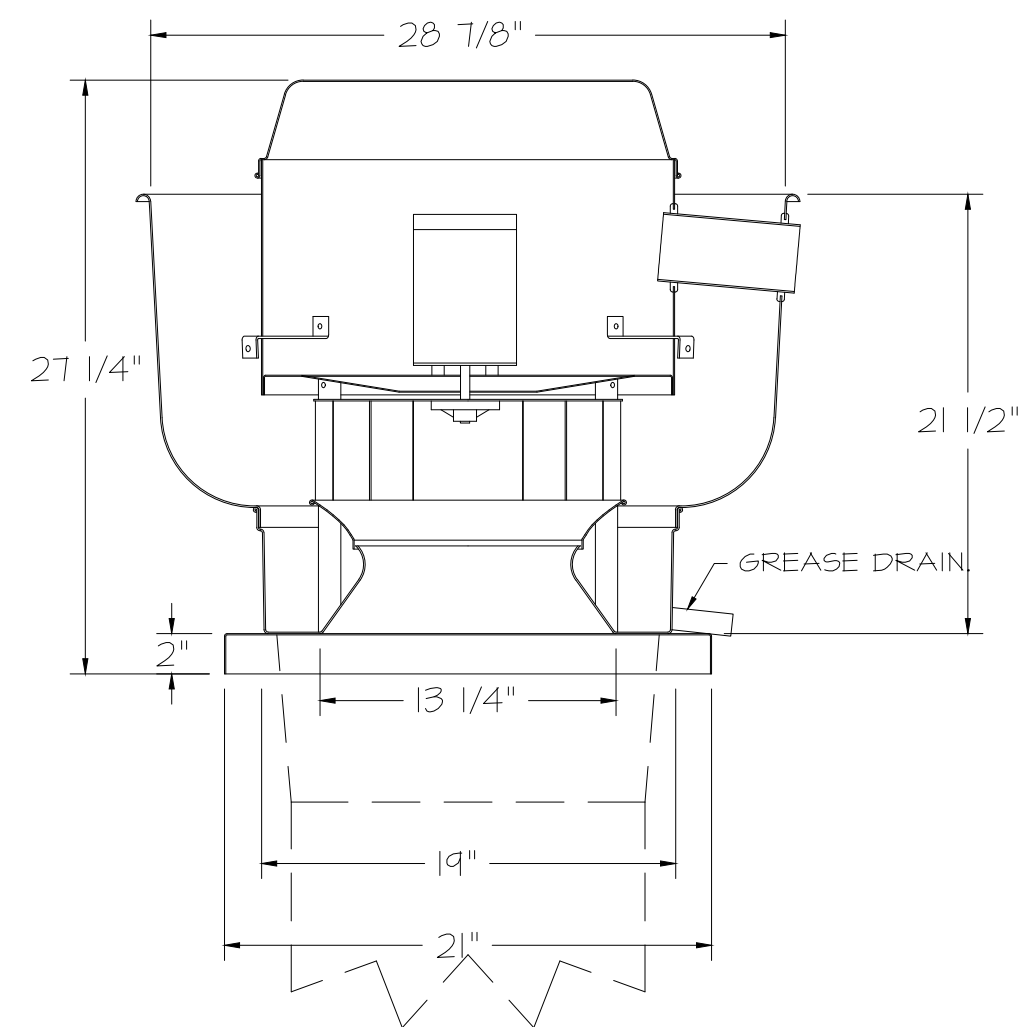
| NO | ON FAN | TAG | WEIGHT | ITEM | SIZE |
|----|--------|---------------|--------|------|---|
| 1 | # 1 | EF-3 (TYPE I) | 34 LBS | CURB | 19,500"W X 19,500"L X 24,000"H VENTED HINGED. |
| 2 | # 2 | EF-1 - RR FAN | 31 LBS | CURB | 19,500"W X 19,500"L X 20,000"H HINGED. |

FAN SOUND DATA

| FAN UNIT NO | TAG | MOTOR | SOUND DATA | | | OCTAVE BAND SOUND DATA | | | | | | | | |
|-------------|----------------|---------|------------|--------------|------------|------------------------|-------|--------|--------|--------|-------|-------|-------|-------|
| | | | LWA | SONES @ 5 FT | DBA @ 5 FT | DISTANCE (FT) | 63 HZ | 125 HZ | 250 HZ | 500 HZ | 1 KHZ | 2 KHZ | 4 KHZ | 8 KHZ |
| 1 | EF-3 (TYPE I) | EXHAUST | 80 | 16.5 | 126.5 | 5 | 76.6 | 78 | 85 | 76.5 | 71.9 | 69.8 | 66 | 57 |
| 2 | EF-1 - RR FAN | EXHAUST | 70.9 | 8.8 | 26.3 | 5 | 68.3 | 75.1 | 73.9 | 64.2 | 62.8 | 55.9 | 44.9 | |
| 4 | VF-1 - CO2 FAN | EXHAUST | 76.4 | 12.4 | 25.3 | 5 | 65.8 | 74 | 74 | 72.2 | 69.8 | 68.5 | 68.2 | |

FAN #3 GFA 500CA - EXHAUST FAN (TF-1 - TRANS FAN)

FAN #1 DU50HFA - EXHAUST FAN (EF-3 (TYPE I))



FEATURES:

- DIRECT DRIVE CONSTRUCTION (NO BELTS/PULLEYS).
- ROOF MOUNTED FANS.
- RESTAURANT MODEL.
- UL705 AND UL762 AND ULG-5645
- VARIABLE SPEED CONTROL.
- INTERNAL WIRING.
- THERMAL OVERLOAD PROTECTION (SINGLE PHASE).
- HIGH HEAT OPERATION 300°F (149°C).
- GREASE CLASSIFICATION TESTING.
- NEMA 3R SAFETY DISCONNECT SWITCH.

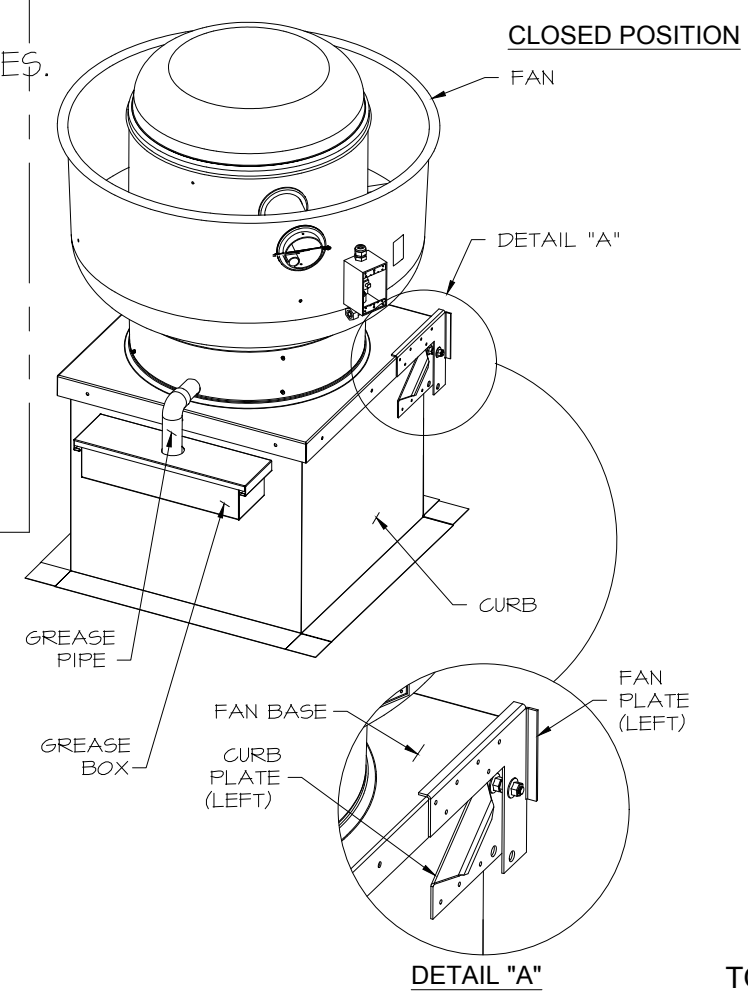
NORMAL TEMPERATURE TEST
EXHAUST FAN MUST OPERATE CONTINUOUSLY WHILE EXHAUSTING AIR AT 300°F (149°C) UNTIL ALL FAN PARTS HAVE REACHED THERMAL EQUILIBRIUM, AND WITHOUT ANY DEGRADING EFFECTS TO THE FAN WHICH WOULD CAUSE UNSAFE OPERATION.

ABNORMAL FLARE-UP TEST
EXHAUST FAN MUST OPERATE CONTINUOUSLY WHILE EXHAUSTING BURNING GREASE VAPORS AT 600°F (316°C) FOR A PERIOD OF 15 MINUTES WITHOUT THE FAN BECOMING DAMAGED TO ANY EXTENT THAT COULD CAUSE AN UNSAFE CONDITION.

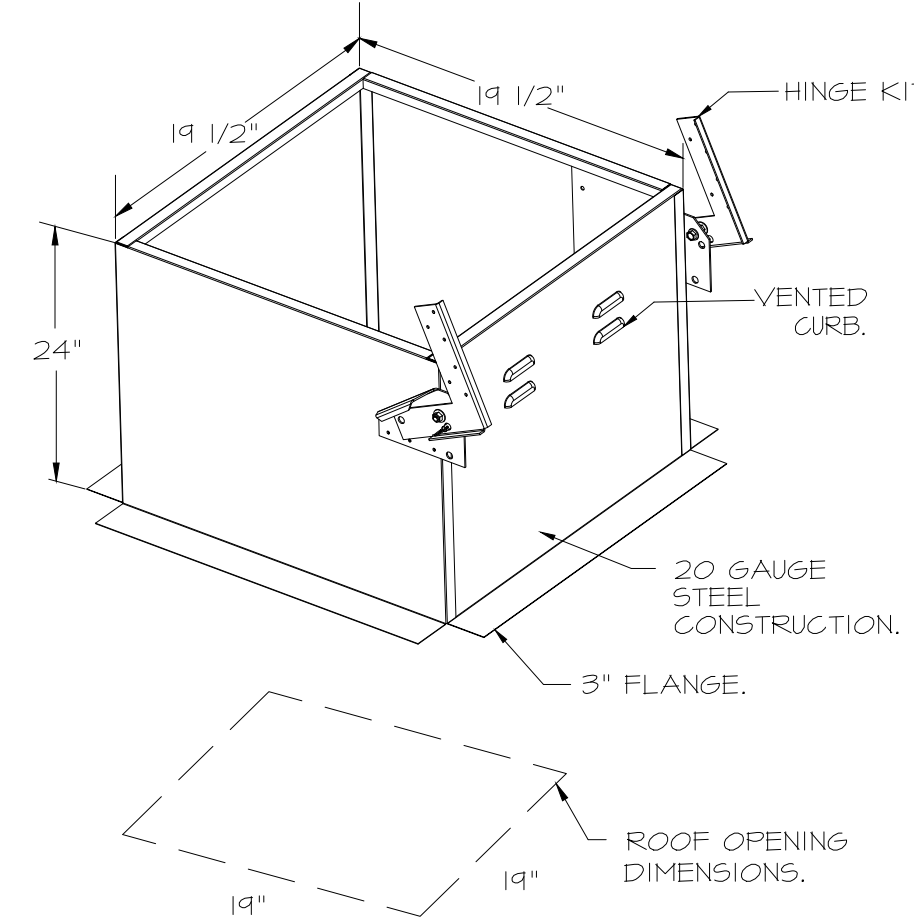
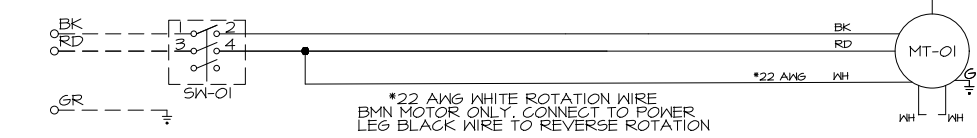
OPTIONS

- GREASE BOX.
- FAN BASE CERAMIC SEAL - DU/DR50HFA
- SHIP LOOSE - FOR GREASE DUCTS.
- ECM WIRING PACKAGE - EXHAUST - MODBUS CONTROL -M5C- (TELCO), CCM ROTATION
- 2 YEAR PARTS WARRANTY.

HINGE KIT INSTALLATION



J5 FROM ECPM03 TO J7



FAN #2 DR33HFA - EXHAUST FAN (EF-1 - RR FAN)

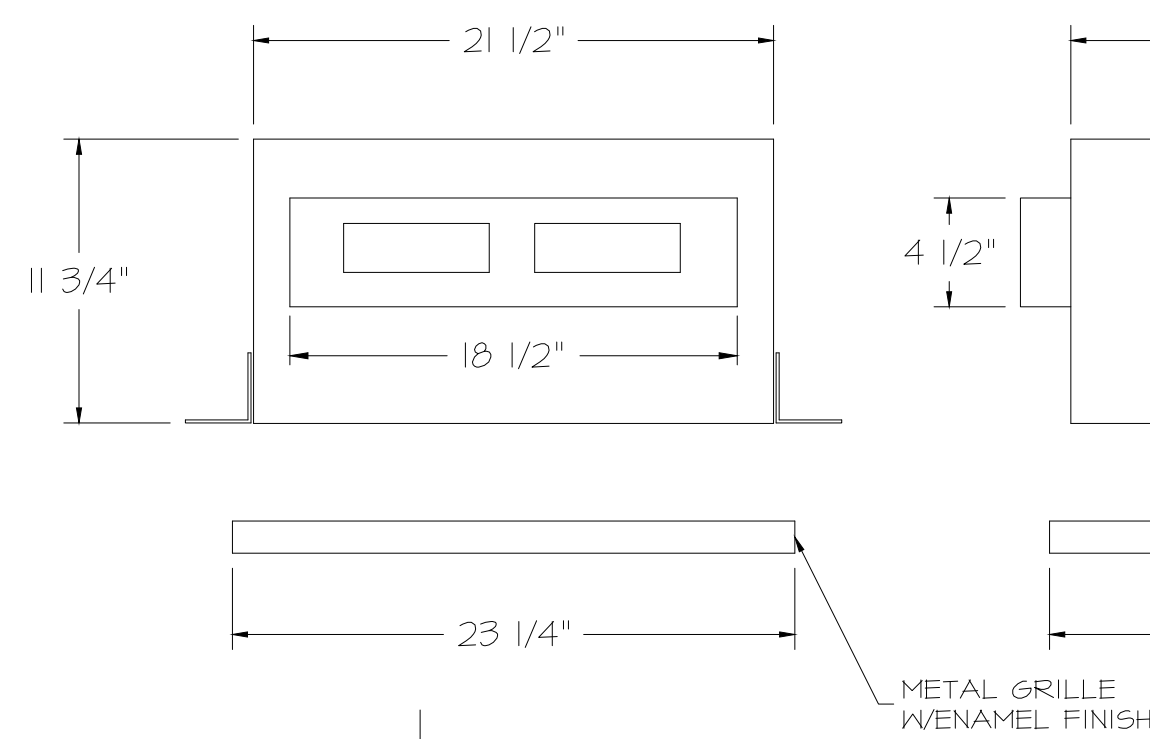
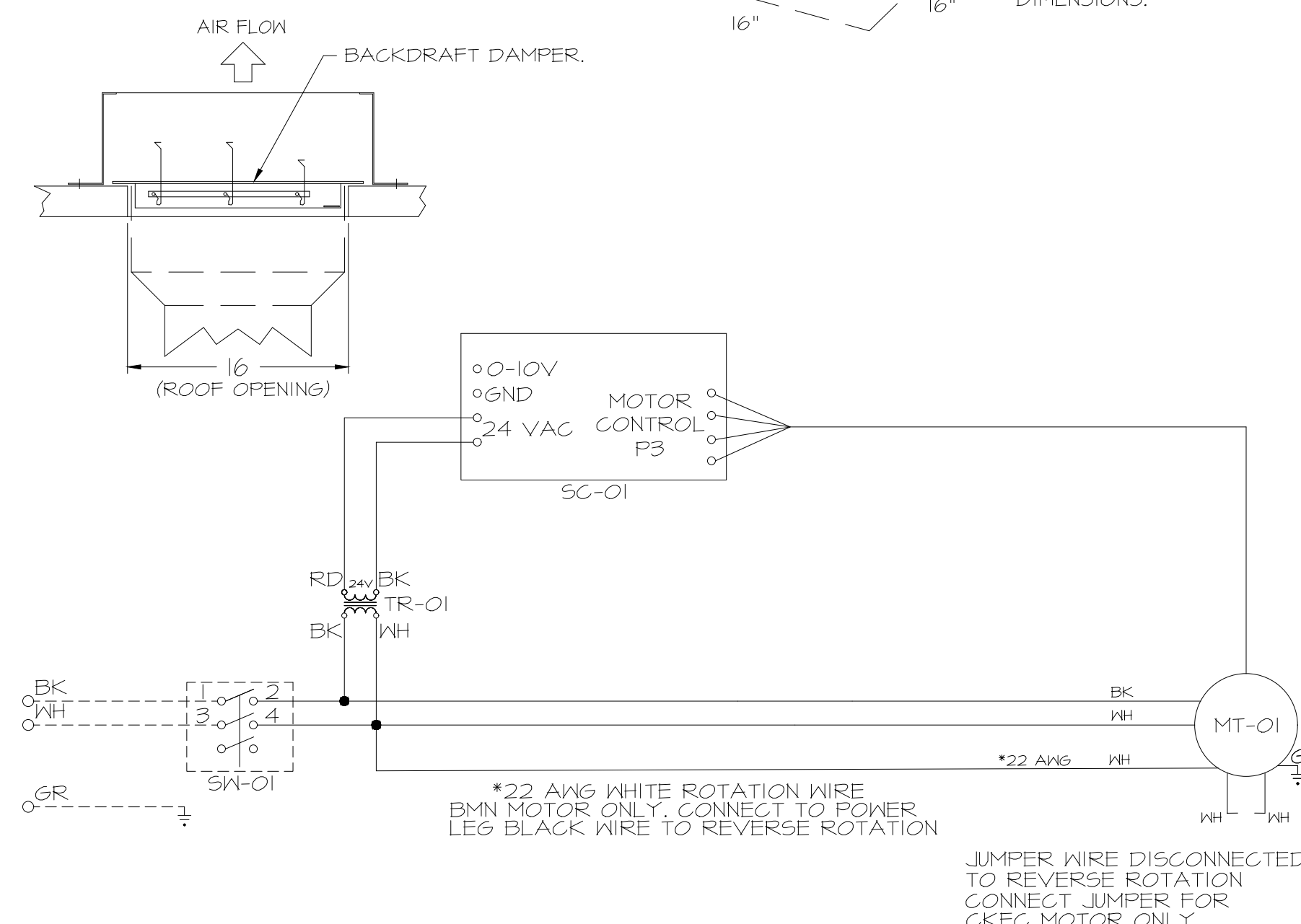
FEATURES:

- DIRECT DRIVE CONSTRUCTION (NO BELTS/PULLEYS).
- ROOF MOUNTED FANS.
- UL705.
- SAFETY DISCONNECT.
- STANDARD BIRD SCREEN.
- SPEED CONTROL.
- THERMAL OVERLOAD PROTECTION (SINGLE PHASE).

OPTIONS

- 1 IS-BDD DAMPER.
- ECM WIRING PACKAGE - MANUAL OR 0-10VDC REFERENCE SPEED CONTROL -RTG- (TELCO MOTOR), CCM ROTATION.
- 2 YEAR PARTS WARRANTY.

BACKDRAFT DAMPER INSTALLATION



FEATURES:

- 1/2" ACOUSTIC HOUSING INSULATION.
- 20 GA. GALVANIZED STEEL HOUSING.
- PLUG TYPE DISCONNECT.
- BUILT IN AUTOMATIC BACKDRAFT DAMPER.
- AMCA SOUND 4 AIR CERTIFIED.
- UL LISTED.
- CAN BE INSTALLED IN CEILING OR WALL.
- 8 POSITION MOUNTING BRACKETS.

OPTIONS

- FAN CONTROL - 3 AMP FAN MOUNTED SPEED CONTROL FOR GFA CEILING FANS.
- 2 YEAR PARTS WARRANTY.

REVISIONS

| NO | DESCRIPTION | DATE |
|----|-------------|------|
| | | |

DATE: 4/29/2025

DWG.#: 7284466

DRAWN BY: R.J.H-80

SCALE: 3/4" = 1'-0"

MASTER DRAWING

SHEET NO. 2

SHEET TITLE: MECHANICAL HOOD DETAILS

SHEET NUMBER: M511

DATE: 10/24/2025

DWG.#: 7284466

DRAWN BY: R.J.H-80

SCALE: 3/4" = 1'-0"

MASTER DRAWING

SHEET NO. 2

SHEET TITLE: MECHANICAL HOOD DETAILS

SHEET NUMBER: M511

DATE: 10/24/2025

DWG.#: 7284466

DRAWN BY: R.J.H-80

SCALE: 3/4" = 1'-0"

MASTER DRAWING

SHEET NO. 2

SHEET TITLE: MECHANICAL HOOD DETAILS

SHEET NUMBER: M511

DATE: 10/24/2025

DWG.#: 7284466

DRAWN BY: R.J.H-80

SCALE: 3/4" = 1'-0"

MASTER DRAWING

SHEET NO. 2

SHEET TITLE: MECHANICAL HOOD DETAILS

SHEET NUMBER: M511

DATE: 10/24/2025

DWG.#: 7284466

DRAWN BY: R.J.H-80

SCALE: 3/4" = 1'-0"

MASTER DRAWING

SHEET NO. 2

SHEET TITLE: MECHANICAL HOOD DETAILS

SHEET NUMBER: M511

DATE: 10/24/2025

DWG.#: 7284466

DRAWN BY: R.J.H-80

SCALE: 3/4" = 1'-0"

MASTER DRAWING

SHEET NO. 2

SHEET TITLE: MECHANICAL HOOD DETAILS

SHEET NUMBER: M511

DATE: 10/24/2025

DWG.#: 7284466

DRAWN BY: R.J.H-80

SCALE: 3/4" = 1'-0"

MASTER DRAWING

SHEET NO. 2

SHEET TITLE: MECHANICAL HOOD DETAILS

SHEET NUMBER: M511

DATE: 10/24/2025

DWG.#: 7284466

DRAWN BY: R.J.H-80

SCALE: 3/4" = 1'-0"

MASTER DRAWING

SHEET NO. 2

SHEET TITLE: MECHANICAL HOOD DETAILS

SHEET NUMBER: M511

DATE: 10/24/2025

DWG.#: 7284466

DRAWN BY: R.J.H-80

SCALE: 3/4" = 1'-0"

MASTER DRAWING

SHEET NO. 2

SHEET TITLE: MECHANICAL HOOD DETAILS

SHEET NUMBER: M511

DATE: 10/24/2025

DWG.#: 7284466

DRAWN BY: R.J.H-80

SCALE: 3/4" = 1'-0"

MASTER DRAWING

SHEET NO. 2

SHEET TITLE: MECHANICAL HOOD DETAILS

SHEET NUMBER: M511

DATE: 10/24/2025

DWG.#: 7284466

DRAWN BY: R.J.H-80

SCALE: 3/4" = 1'-0"

MASTER DRAWING

SHEET NO. 2

SHEET TITLE: MECHANICAL HOOD DETAILS

SHEET NUMBER: M511

DATE: 10/24/2025

DWG.#: 7284466

DRAWN BY: R.J.H-80

SCALE: 3/4" = 1'-0"

MASTER DRAWING

SHEET NO. 2

SHEET TITLE: MECHANICAL HOOD DETAILS

SHEET NUMBER: M511

DATE: 10/24/2025

DWG.#: 7284466

DRAWN BY: R.J.H-80

SCALE: 3/4" = 1'-0"

MASTER DRAWING

SHEET NO. 2

SHEET TITLE: MECHANICAL HOOD DETAILS

SHEET NUMBER: M511

DATE: 10/24/2025

DWG.#: 7284466

DRAWN BY: R.J.H-80

SCALE: 3/4" = 1'-0"

MASTER DRAWING

SHEET NO. 2

SHEET TITLE: MECHANICAL HOOD DETAILS

SHEET NUMBER: M511

DATE: 10/24/2025

DWG.#: 7284466

DRAWN BY: R.J.H-80

SCALE: 3/4" = 1'-0"

MASTER DRAWING

SHEET NO. 2

SHEET TITLE: MECHANICAL HOOD DETAILS

SHEET NUMBER: M511

DATE: 10/24/2025

DWG.#: 7284466

DRAWN BY: R.J.H-80

SCALE: 3/4" = 1'-0"

MASTER DRAWING

SHEET NO. 2

SHEET TITLE: MECHANICAL HOOD DETAILS

SHEET NUMBER: M511

DATE: 10/24/2025

DWG.#: 7284466

DRAWN BY: R.J.H-80

SCALE: 3/4" = 1'-0"

MASTER DRAWING

SHEET NO. 2

SHEET TITLE: MECHANICAL HOOD DETAILS

SHEET NUMBER: M511

DATE: 10/24/2025

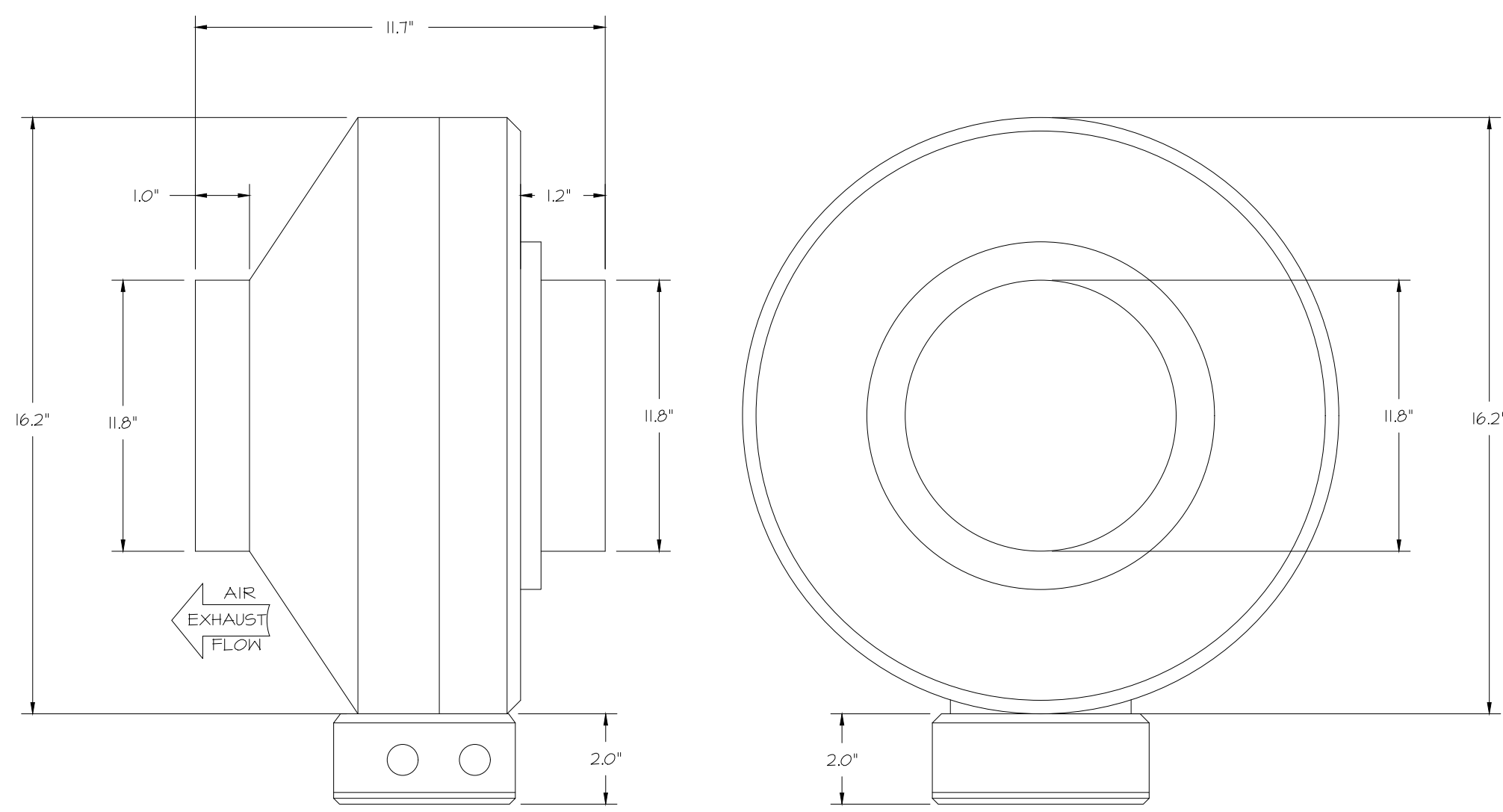
DWG.#: 7284466

DRAWN BY: R.J.H-80

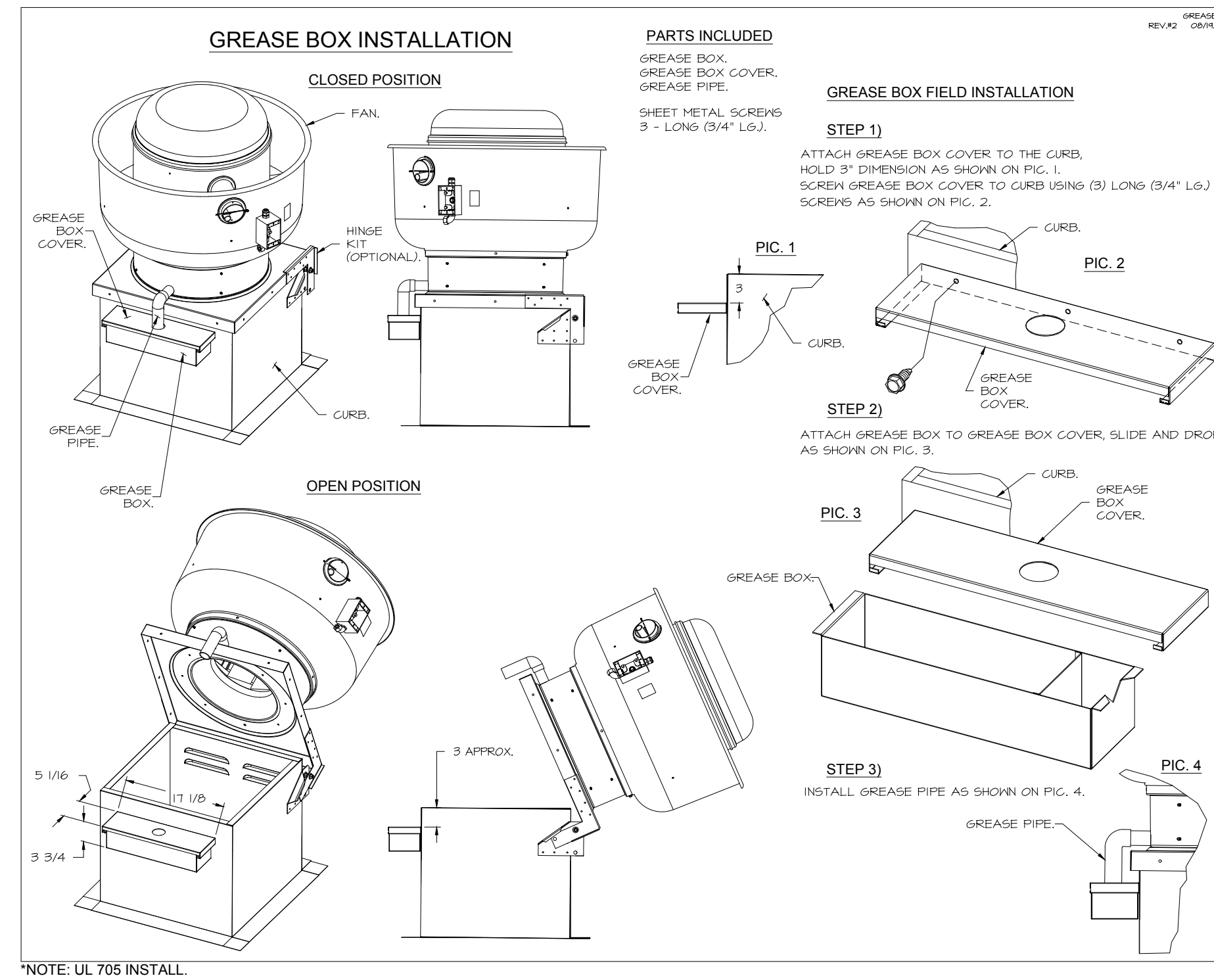
SCALE: 3/4" = 1'-0"

MASTER DRAWING

FAN #4 DFA-300-GA - EXHAUST FAN (VF-1 - G02 FAN)

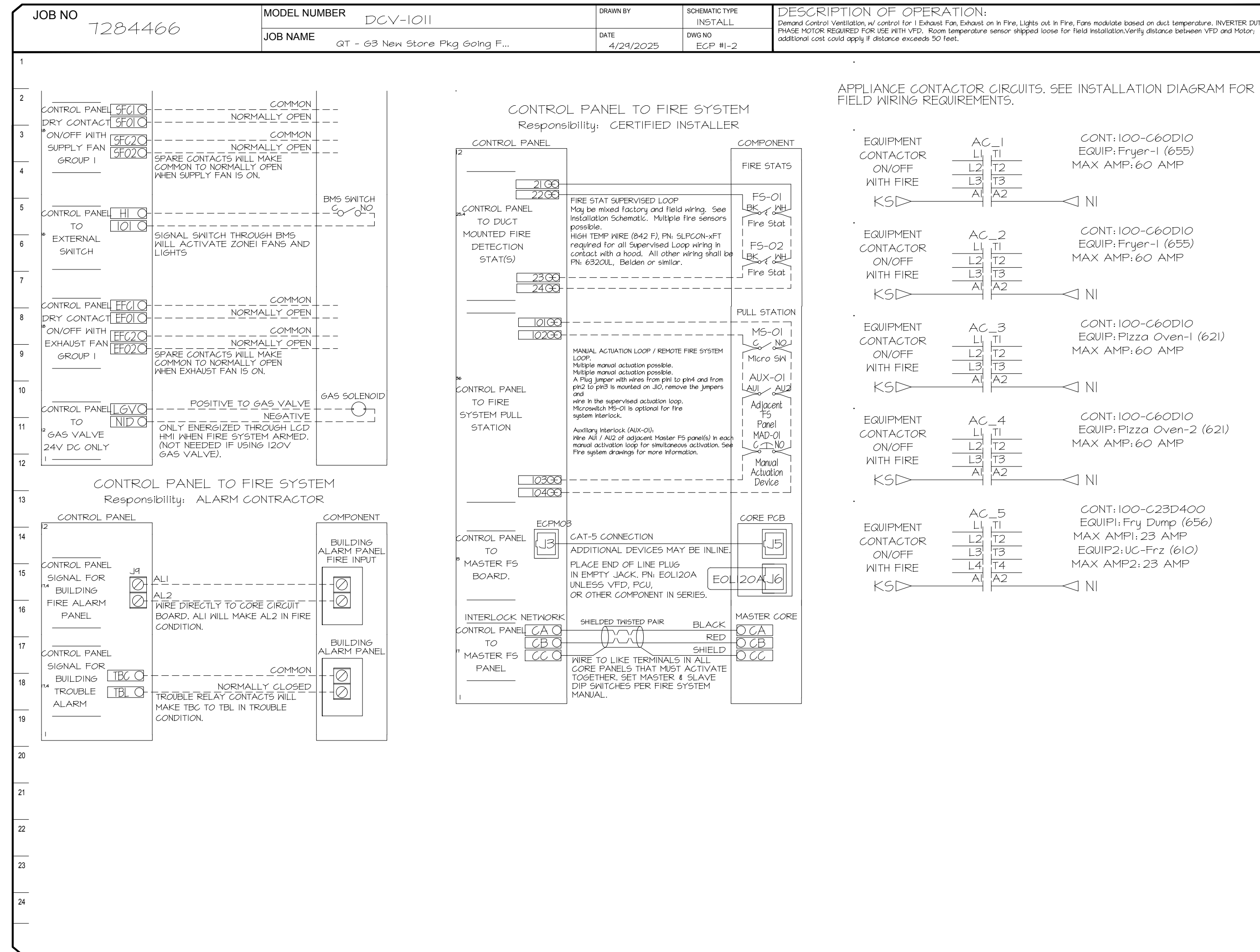
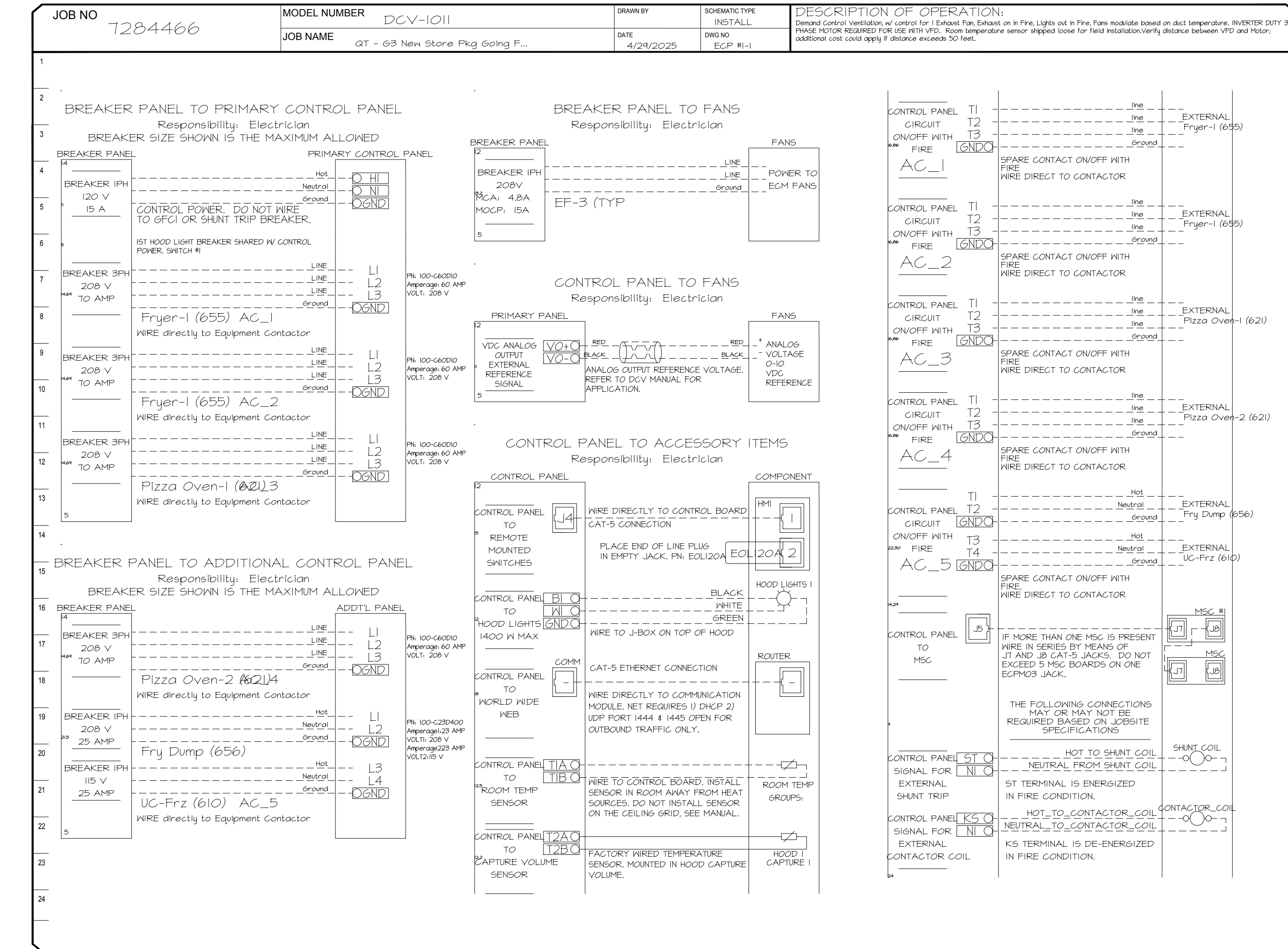


- FEATURES:**
- 20 GA. GALVANIZED STEEL HOUSING.
 - STANDARD 4" - 12" ROUND DUCT CONNECTIONS.
 - EASILY ACCESSIBLE J-BOX.
 - UL507 LISTED.
 - EXTREMELY QUIET OPERATION.
- OPTIONS:**
- FAN CONTROL - 3 AMP WHITE SPEED CONTROL FOR CFA CEILING FAN.
 - 2 YEAR PARTS WARRANTY.



ELECTRICAL PACKAGE - JOB#7284466

| NO | TAG | PACKAGE # | LOCATION | SWITCHES | | OPTION | FANS CONTROLLED | | | | | |
|----|------------|-----------|----------------------|-----------------------|------------------|--------------------|-----------------|---------|---|-------|------|-----|
| | | | | LOCATION | QUANTITY | | FAN TAG | TYPE | Φ | HP | VOLT | FLA |
| 1 | TYPE I ECP | DCV-1011 | UTILITY CABINET LEFT | SHIP LOOSE W/ PREWIRE | 1 LIGHT 1 FAN | SMART CONTROLS DCV | EF-3 (TYPE I) | EXHAUST | 1 | 0.500 | 208 | 3.8 |



REVISIONS

| NO. | DESCRIPTION | DATE |
|-----|-------------|------|
| | | |

CAPTIVE

Tulsa Office
www.captiveair.com
www.captiveair.com
www.captiveair.com

12101 East 51st Street, Suite 101A, Tulsa, OK, 74146 PHONE: (918) 258-0291 FAX: 9182275947 EMAIL: reg@captveair.com

DATE: 4/29/2025
DWG.#: 7284466
DRAWN BY: RJB-80
SCALE: 3/4" = 1'-0"
MASTER DRAWING

QT - Fryer Addition Remodel Pkg Going Forward (DW) (450F)
Various Locations,
Tulsa, OK, 74136

SHEET NO. 3

GEORGIA REGISTERED PROFESSIONAL ENGINEER
No. PED42999
J. BARTLEY

SIGNATURE DATE: 10/24/2025

H & B HOSS & BROWN ENGINEERS

15902 Midland Drive
Shawnee, Kansas 66217
913.362.9090 | mail@hb-engineers.com
© Hoss & Brown Engineers 2025

QuikTrip No. 1756

2925 Browns Bridge Road
Gainesville, Georgia

QT

PROTOTYPE: Fryer
DIVISION: Atlanta
VERSION: G3SE
DATE: 06-18-2025

| REV | DATE | DESCRIPTION |
|-----|------|-------------|
| | | |

ORIGINAL ISSUE DATE: 10/24/2025

SHEET TITLE:
MECHANICAL HOOD DETAILS

SHEET NUMBER:
M512

DUCTWORK #1 PARTS - JOB#7284466 DOUBLE WALL OFFSET

| TAG | PART # | CFM | GPM | ZONE | COVEREDBY | SP | WEIGHT | VELOCITY | QTY | DESCRIPTION |
|--------------|--------------------------|------|-----|------|-----------|---------|--------|----------|-----|--|
| HI-EI | DWI6DWRISER-2R-5 | 1350 | | | | -0.54 | 7.31 | 0.00 | 1 | DOUBLE WALL RISER COVER - USED ON 12" INNER RISER, 4" LONG - 2 LAYERS REDUCED CLEARANCE - 16" STAINLESS STEEL OUTER RISER SHELL ASSEMBLY. INCLUDES INSULATION & SINGLE V CLAMPS FOR INNER & OUTER CONNECTIONS. |
| P1 | DWI230DWASY-2R-5 | 1350 | | | | -0.0387 | 14.16 | 1718.87 | 1 | DOUBLE WALL DUCT - 12" INNER 30 DUCT - 2 LAYERS REDUCED CLEARANCE - 16" STAINLESS STEEL OUTER SHELL. |
| SYSTEM AT P1 | | | | | | | | | | |
| P2 | DWI24TDWAJD-2R-5 | 1350 | | | | -0.0128 | 83.19 | 1718.87 | 1 | DOUBLE WALL ADJUSTABLE DUCT - 12" INNER DUCT - 2 LAYERS REDUCED CLEARANCE - 16" STAINLESS STEEL OUTER SHELL. MIN LENGTH = 11" / MAX LENGTH = 48.5" / ADJUSTMENT = 30.5" / ADJUSTABLE SECTION MAY NEED TO BE CUT. INCLUDES SINGLE AND DOUBLE WALL "V" CLAMPS. |
| SYSTEM AT P2 | | | | | | | | | | |
| P3 | DWI230DWASY-2R-5 | 1350 | | | | -0.0442 | 14.16 | 1718.87 | 1 | DOUBLE WALL DUCT - 12" INNER 30 DUCT - 2 LAYERS REDUCED CLEARANCE - 16" STAINLESS STEEL OUTER SHELL. |
| SYSTEM AT P3 | | | | | | | | | | |
| P4 | DWI24TDWAJD-2R-5 | 1350 | | | | -0.0169 | 83.19 | 1718.87 | 1 | DOUBLE WALL ADJUSTABLE DUCT - 12" INNER DUCT - 2 LAYERS REDUCED CLEARANCE - 16" STAINLESS STEEL OUTER SHELL. MIN LENGTH = 11" / MAX LENGTH = 48.5" / ADJUSTMENT = 30.5" / ADJUSTABLE SECTION MAY NEED TO BE CUT. INCLUDES SINGLE AND DOUBLE WALL "V" CLAMPS. |
| SYSTEM AT P4 | | | | | | | | | | |
| P5 | DWI24DWRNDADP2ASY13-2R-5 | 1350 | | | | -0.0122 | 21.94 | 1718.87 | 1 | DOUBLE WALL DUCT - 12" X 14" RND2RND ADAPTER - 13" TALL - 2 LAYERS REDUCED CLEARANCE - 16" X 16" STAINLESS STEEL OUTER SHELL. STANDARD ADAPTER. |
| SYSTEM AT P5 | | | | | | | | | | |
| P6 | DW2314TP | 1350 | | | | | 8.49 | 1262.85 | 1 | DUCT TO CURB TRANSITION, 23" CURB TO 14" DUCT, 16 GA ALUMINIZED. USED ON BDUI5, DU75 & 85. |
| RC1 | DWI6DWRISER-2R-5 | | | | | | 7.31 | | 1 | DOUBLE WALL RISER COVER - USED ON 12" INNER RISER, 4" LONG - 2 LAYERS REDUCED CLEARANCE - 16" STAINLESS STEEL OUTER RISER SHELL ASSEMBLY. INCLUDES INSULATION & SINGLE V CLAMPS FOR INNER & OUTER CONNECTIONS. |
| | 3M-2000PLUS | | | | | | 0.80 | | 2 | DUCT - 3M FIRE BARRIER 2000 PLUS SILICONE - USED AS SEALANT TO SEAL DUCT JOINTS. |
| TOTAL WEIGHT | | | | | | | 241.35 | | | |

DOUBLE WALL FACTORY BUILT DUCTWORK

- ALL DUCTWORK IS REQUIRED TO BE INSTALLED WITH THE MAXIMUM SUPPORT SPACING LISTED BELOW.
- FOR A COMPLETE LIST OF APPROVED SUPPORT METHODS, SEE THE ENTIRE INSTALLATION AND OPERATION MANUAL.
- DUCTWORK SHALL SLOPE NOT LESS THAN 1/16" PER LINEAR FOOT TOWARDS THE HOOD OR AN APPROVED GREASE COLLECTION RESERVOIR.
- WHERE HORIZONTAL DUCTS EXCEED 75 FEET IN LENGTH, THE SLOPE SHALL NOT BE LESS THAN 3/16" PER LINEAR FOOT.

| HORIZONTAL | |
|---------------|----------------------|
| DUCT DIAMETER | SUPPORT SPACING (FT) |
| 5" | 7' |
| 6" | 7' |
| 7" | 7' |
| 8" | 7' |
| 10" | 7' |
| 12" | 7' |
| 14" | 7' |
| 16" | 7' |
| 18" | 5' |
| 20" | 5' |
| 22" | 5' |
| 24" | 5' |
| 26" | 5' |
| 28" | 5' |
| 30" | 5' |
| 32" | 5' |
| 34" | 5' |
| 36" | 5' |

| VERTICAL | | | |
|---------------------|-------------------|-------------------|--------------------|
| TYPE | WALL SUPPORT (FT) | CURB SUPPORT (FT) | FLOOR SUPPORT (FT) |
| 2R & 2R HT (5"-16") | 20' | 24' | 24' |
| 2R (18") | 18' | 24' | 24' |
| 3R & 3Z (5"-24") | 10' | 24' | 24' |
| 3Z (26" -36") | 10' | 20' | 20' |

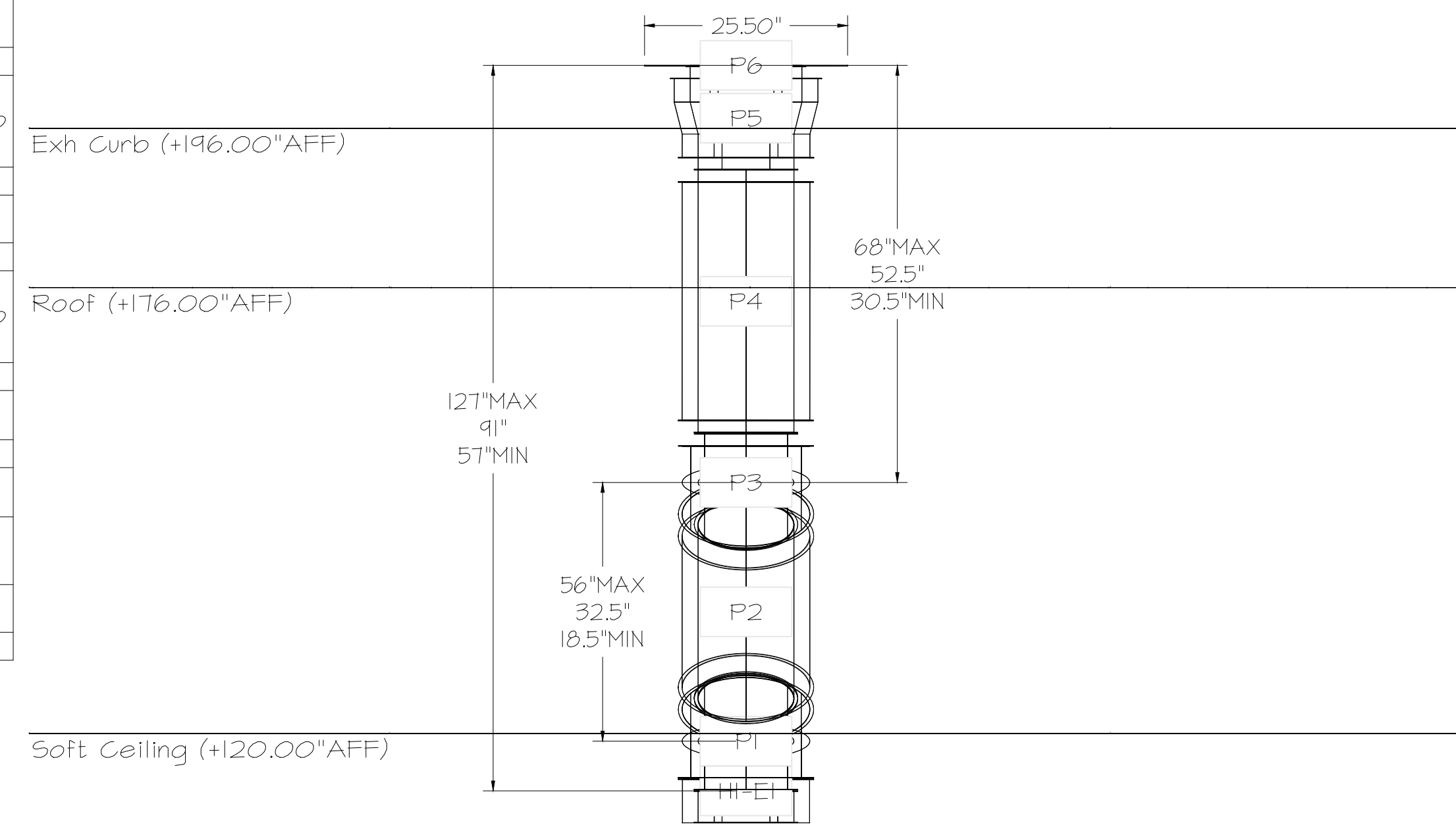
Double Wall Grease Duct Specification

Furnish double wall, factory built grease duct for use with Type I kitchen hoods, which conforms to the requirements of NFPA-96. Products shall be ETL listed to UL-1978 and UL-2221 for venting air and grease vapors from commercial cooking operation. Models DW-2R, 3R and 3Z are used for grease duct applications when installed in accordance with these instructions and National Fire Protection Association "NFPA 96"; Standard for Ventilation Control and Fire Protection of Commercial Cooking Operations. Double wall grease ducts are listed for a continuous internal temperature of 500 degrees F and intermittent temperatures of 2000 degrees F. The duct sections shall be constructed of an inner duct wall and an outer wall with insulation in between. The inner duct wall shall be constructed of .036 inch thick, 430 type stainless steel and be available in diameters 8" through 24". The outer wall shall be constructed of stainless steel at a minimum of .024 inch thickness. The duct, based on model number, shall include layers of Super Wool 60T Plus insulation between the inner and outer wall. Grease duct joints shall be held together by means of formed V clamps and sealed with 3M Fire Barrier 2000+. The duct wall assembly shall be tested and listed at 3/4" or zero inch clearance, according to classifications.

Classifications and Clearances

UL 2221: Standard for Fire Resistive Grease Duct Enclosure Assemblies. Chapter 7 of this standard references a test labeled Internal Fire Test. Section 7.1.1 references two installation conditions, Condition A and Condition B. Condition A represents all installation condition except for installation within non-ventilated combustible enclosures. Condition B represents installation within a non-ventilated combustible enclosure. Model DW-2R is classified under UL2221 (Test of Fire Resistive Duct Enclosure Assemblies) as an alternate to 2-Hr. Fire resistive shaft enclosures with a reduced clearance to combustibles (sizes 8" to 16" diameter). Model 2R is listed in accordance with the requirements for duct enclosure Condition B.

DUCTWORK #1 FRONT VIEW OFFSET



Floor (+0.00" AFF)

DO NOT LEAK TEST USING SMOKE BOMBS CONTAINING CHLORINES/CHLORIDES. CONSULT WITH CAPTIVEAIRE FOR PROPER LEAK TESTING METHODS.

| REVISIONS | |
|-------------|------|
| DESCRIPTION | DATE |
| | |
| | |
| | |
| | |

CAPTIVEAIRE
www.captiveaire.com
Tulsa Office
12101 East 51st Street, Suite 101A, Tulsa, OK, 74146 PHONE: (918) 258-0281 FAX: 9182275947 EMAIL: reg@captveaire.com



SIGNATURE DATE: 10/24/2025

H & B
HOSS & BROWN ENGINEERS
15902 Midland Drive
Shawnee, Kansas 66217
913.362.9000 | mail@h-b.com
© Hoss & Brown Engineers 2025

QuikTrip No. 1756

2925 Browns Bridge Road
Gainesville, Georgia

| REV | DATE | DESCRIPTION |
|-----|------|-------------|
| | | |
| | | |
| | | |
| | | |
| | | |
| | | |
| | | |
| | | |
| | | |
| | | |

QT - Fryer Addition Remodel Pkg Going Forward (DW) (450F)
Various Locations,
Tulsa, OK, 74136

DATE: 4/29/2025

DWG.#: 7284466

DRAWN BY: RJH-80

SCALE: 3/4" = 1'-0"

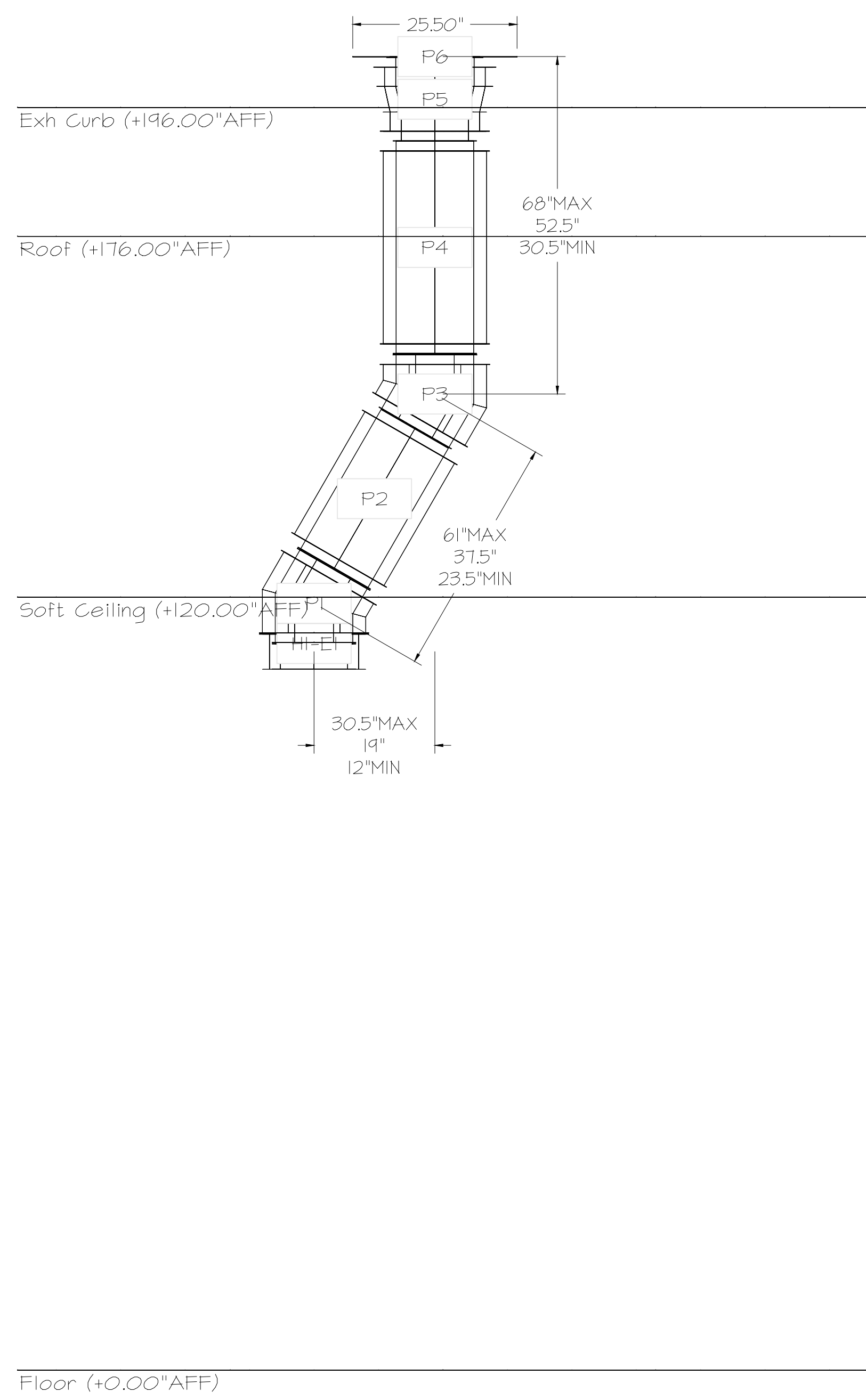
MASTER DRAWING

SHEET NO. 4

| SHEET TITLE: | |
|-------------------------|--|
| MECHANICAL HOOD DETAILS | |

| SHEET NUMBER: | |
|---------------|--|
| M513 | |

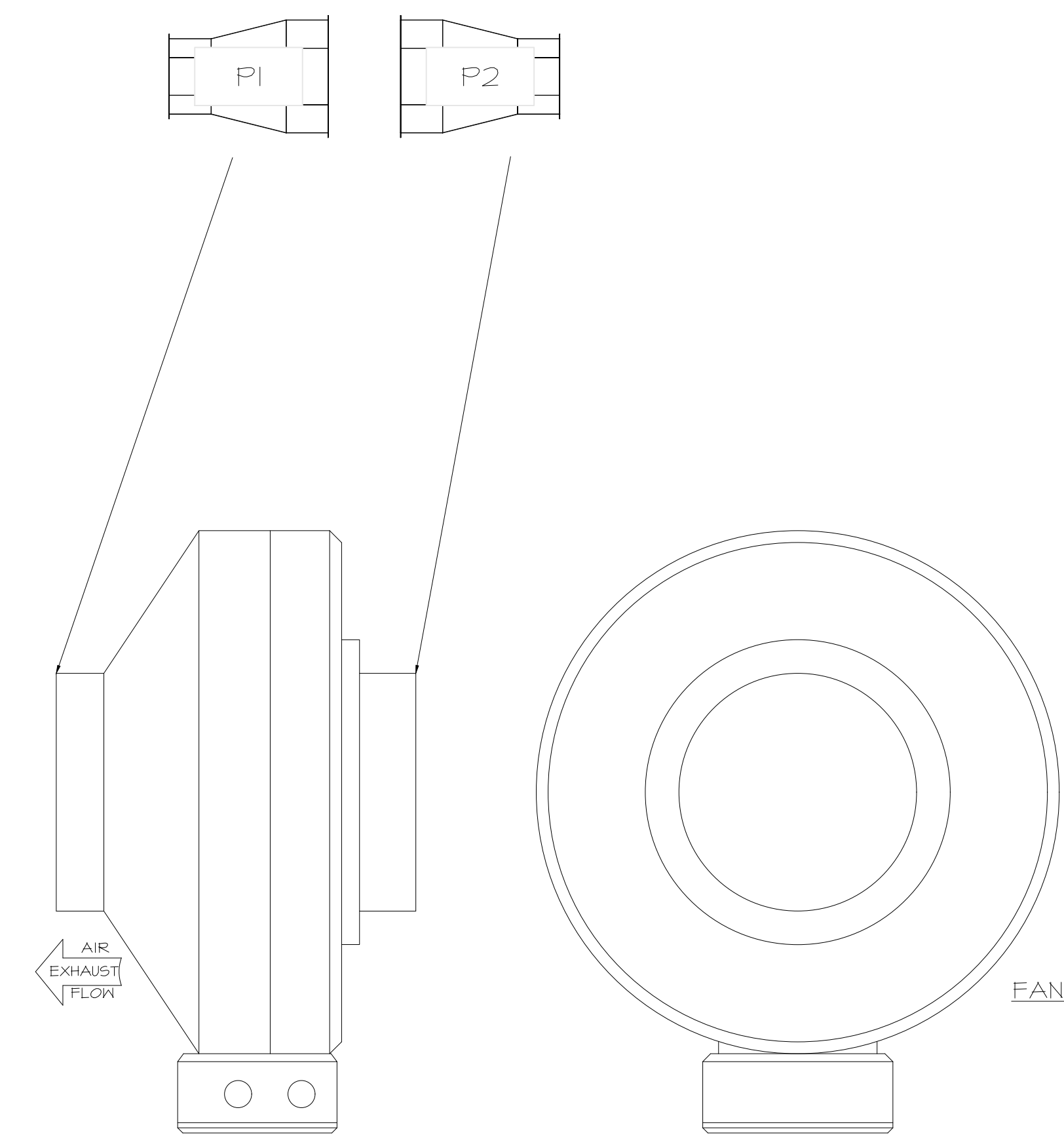
DUCTWORK #1 SIDE VIEW
OFFSET



DUCTWORK #2 PARTS - JOB#7284466

| TAG | PART # | CFM | GPM | ZONE | COVEREDBY | SP | WEIGHT | VELOCITY | QTY | DESCRIPTION |
|--------------|-------------|-----|-----|------|-----------|----|--------|----------|-----|--|
| P1 | DW08I2ADPIT | | | | | | 6.74 | | 1 | SINGLE WALL DUCT ADAPTER, 8" DUCT DIA TO 12" DUCT DIA, ASSEMBLY - 430 STAINLESS STEEL. |
| P2 | DW08I2ADPIT | | | | | | 6.74 | | 1 | SINGLE WALL DUCT ADAPTER, 8" DUCT DIA TO 12" DUCT DIA, ASSEMBLY - 430 STAINLESS STEEL. |
| TOTAL WEIGHT | | | | | | | 13.48 | | | |

DUCTWORK #2 FRONT VIEW



FAN #4 DFA-300-CA - EXHAUST FAN (VF-1 - CO2 FAN)

SYSTEM DESIGN VERIFICATION (SDV)

IF ORDERED, CAS SERVICE WILL PERFORM A SYSTEM DESIGN VERIFICATION (SDV) ONCE ALL EQUIPMENT HAS HAD A COMPLETE START UP PER THE OPERATION AND INSTALLATION MANUAL. TYPICALLY, THE SDV WILL BE PERFORMED AFTER ALL INSPECTIONS ARE COMPLETE.

ANY FIELD RELATED DISCREPANCIES THAT ARE DISCOVERED DURING THE SDV WILL BE BROUGHT TO THE ATTENTION OF THE GENERAL CONTRACTOR AND CORRESPONDING TRADES ON SITE. THESE ISSUES WILL BE DOCUMENTED AND FORWARDED TO THE APPROPRIATE SALES OFFICE. IF CAS SERVICE HAS TO RESOLVE A DISCREPANCY THAT IS A FIELD ISSUE, THE GENERAL CONTRACTOR WILL BE NOTIFIED AND BILLED FOR THE WORK. SHOULD A RETURN TRIP BE REQUIRED DUE TO ANY FIELD RELATED DISCREPANCY THAT CANNOT BE RESOLVED DURING THE SDV, THERE WILL BE ADDITIONAL TRIP CHARGES.

DURING THE SDV, CAS SERVICE WILL ADDRESS ANY DISCREPANCY THAT IS THE FAULT OF THE MANUFACTURER, SHOULD A RETURN TRIP BE REQUIRED, THE GENERAL CONTRACTOR AND APPROPRIATE SALES OFFICE WILL BE NOTIFIED. THERE WILL BE NO ADDITIONAL CHARGES FOR MANUFACTURER DISCREPANCIES.

REVISIONS

| NO. | DESCRIPTION | DATE |
|-----|-------------|------|
| | | |
| | | |
| | | |

CAPTIVE

Tulsa Office
www.captiveair.com
12101 East 51st Street, Suite 101A, Tulsa, OK, 74146 PHONE: (918) 258-0251 FAX: 9192275947 EMAIL: reg@captveair.com



SIGNATURE DATE: 10/24/2025

H & B
HOSS & BROWN ENGINEERS

15902 Midland Drive
Shawnee, Kansas 66217
913.362.9090 | mail@h-b.com
© Hoss & Brown Engineers 2025

QuikTrip No. 1756

2925 Browns Bridge Road
Gainesville, Georgia

QT

© QUIKTRIP CORPORATION 2025
ALL INFORMATION IS UNCLASSIFIED UNLESS INDICATED OTHERWISE
ALL RIGHTS RESERVED

| | |
|-----------|------------|
| PROTOTYPE | Fryer |
| DIVISION | Atlanta |
| VERSION | G3SE |
| DATE | 06-18-2025 |

QT - Fryer Addition Remodel Pkg Going Forward (DW) (450F)
Various Locations,
Tulsa, OK, 74136

DATE: 4/29/2025
DWG.#: 7284466
DRAWN BY: R-JH-80
SCALE: 3/4" = 1'-0"
MASTER DRAWING

SHEET NO.
5

| REV | DATE | DESCRIPTION |
|-----|------|-------------|
| | | |
| | | |
| | | |
| | | |
| | | |
| | | |
| | | |
| | | |
| | | |

SHEET TITLE:
MECHANICAL HOOD
DETAILS

SHEET NUMBER:
M514

