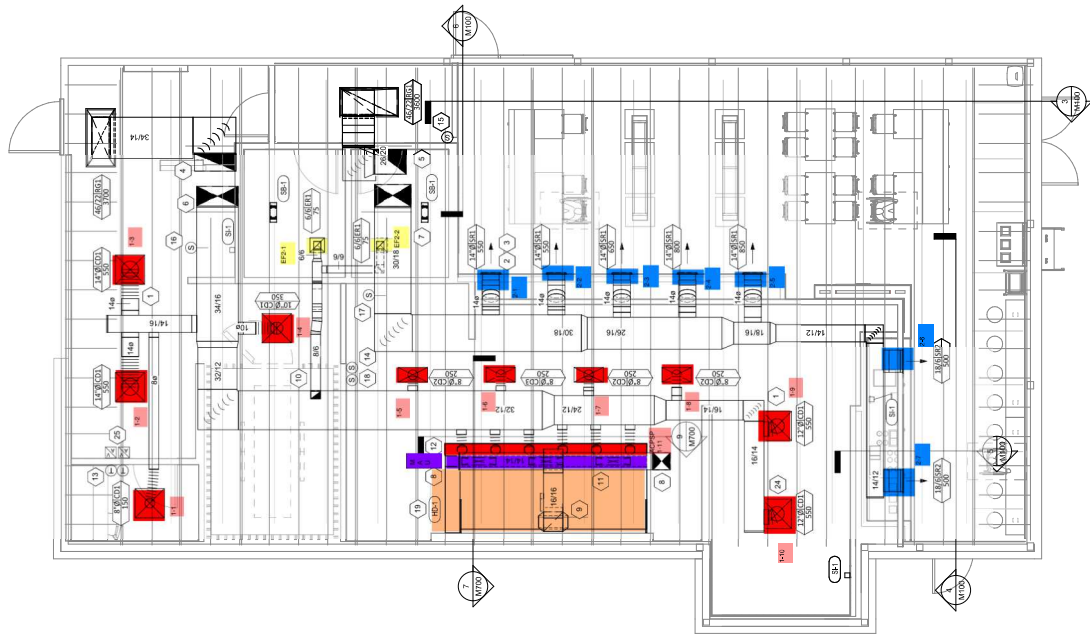




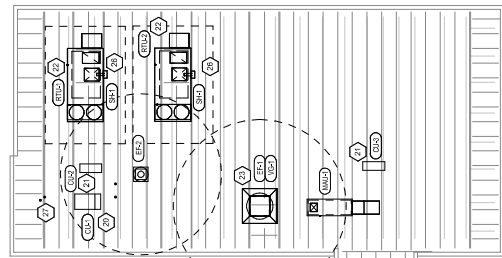
Drawn:	Therese
Check:	DMA
MET:	
Project No.:	230306
Contract:	

HVAC PLAN NOTES

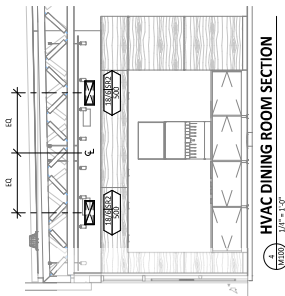
1. SEE ARCHITECTURAL REFLECTED CEILING PLAN FOR CEILING MOUNTED EQUIPMENT LOCATION. TYPICAL.
2. PAINT DUCTWORK VISIBLE THROUGH DINING ROOMS SUPPLY REGISTERS BLACK. TYPICAL.
3. ADJUST SUPPLY REGISTERS SO THAT SUPPLY AIR HITS WALL ON OPPOSITE SIDE OF ROOM AT APPROXIMATELY 7' AFF WITH NO DRAFTS BELT IN THE DINING ROOM.
4. PROVIDE 1" CLEARANCE BETWEEN ALL DUCTWORK AND STRUCTURAL MEMBERS. PROVIDE 1" CLEARANCE BETWEEN ALL DUCTWORK AND INTERLOCK SMOKE DETECTOR TO RTU-1 ORIENTATION.
5. PROVIDE 1" CLEARANCE BETWEEN ALL DUCTWORK AND STRUCTURAL MEMBERS. PROVIDE 1" CLEARANCE BETWEEN ALL DUCTWORK AND INTERLOCK SMOKE DETECTOR TO RTU-2 ORIENTATION.
6. PROVIDE 1" CLEARANCE BETWEEN ALL DUCTWORK AND STRUCTURAL MEMBERS. PROVIDE 1" CLEARANCE BETWEEN ALL DUCTWORK AND INTERLOCK SMOKE DETECTOR TO RTU-3 ORIENTATION.
7. PROVIDE 1" CLEARANCE BETWEEN ALL DUCTWORK AND STRUCTURAL MEMBERS. PROVIDE 1" CLEARANCE BETWEEN ALL DUCTWORK AND INTERLOCK SMOKE DETECTOR TO RTU-4 ORIENTATION.
8. 14" DIA. DUCT UP THROUGH ROOF. TRANSMISSION TO MANU 3 SUPPLY CONNECTION IN ROOF CURB.
9. 16" DIA. DUCT UP THROUGH ROOF. TRANSMISSION TO MANU 3 SUPPLY CONNECTION IN ROOF CURB.
10. 18" DIA. DUCT DOWN TO MANAGER AIR PER DUCT CONNECTION. TRANSMISSION TO SUPPLY FLEXLINE OPENING SIZE. TYPICAL CAP UNLESS DUCT CONNECTIONS.
11. 8" DIA. DUCT DOWN TO AC PP DUCT CONNECTION. TRANSMISSION TO SUPPLY FLEXLINE OPENING SIZE. TYPICAL CAP UNLESS DUCT CONNECTIONS.
12. 8" DIA. DUCT DOWN TO AC PP DUCT CONNECTION. TRANSMISSION TO SUPPLY FLEXLINE OPENING SIZE. TYPICAL CAP UNLESS DUCT CONNECTIONS.
13. INSTALL SMOKE GANG VERTICAL. HOOD GRIPPOINT TERMINATIONS FURNISHED BY ITEMS FOR RTU-1 AND RTU-2 AT THIS LOCATION. 7' AFF. COORDINATE WITH ELECTRICAL SWITCHING IN THIS LOCATION.
14. INSTALL GRIPPOINT ZONE SENSOR MODULE FURNISHED BY ITEMS FOR RTU-1 AT THIS LOCATION. 7' AFF. DIRECTLY TO WALL (NO JUNCTION BOX). COORDINATE LOCATION WITH EQUIPMENT. PROVIDE WIRING AS SHOWN IN DETAIL 8/7/23.
15. INSTALL GRIPPOINT ZONE SENSOR MODULE FURNISHED BY ITEMS FOR RTU-2 AT THIS LOCATION. 6' AFF. DIRECTLY TO WALL (NO JUNCTION BOX). COORDINATE LOCATION WITH EQUIPMENT. PROVIDE WIRING AS SHOWN IN DETAIL 8/7/23.
16. INSTALL GRIPPOINT SUPPLY PROBE FURNISHED BY ITEMS FOR RTU-1 IN THE SUPPLY DUCTWORK UPSTREAM FROM THE FIRST BRANCH CONNECTION. PROVIDE WIRING AS SHOWN IN DETAIL 8/7/20.
17. INSTALL GRIPPOINT SUPPLY PROBE FURNISHED BY ITEMS FOR RTU-2 IN THE SUPPLY DUCTWORK UPSTREAM FROM THE FIRST BRANCH CONNECTION. PROVIDE WIRING AS SHOWN IN DETAIL 8/7/20.
18. PROVIDE 1" CLEARANCE BETWEEN ALL DUCTWORK AND STRUCTURAL MEMBERS. PROVIDE 1" CLEARANCE BETWEEN ALL DUCTWORK AND INTERLOCK SMOKE DETECTOR TO RTU-1 ORIENTATION.
19. INSTALL KITCHEN HOOD. HO-1 SUPPORT HOOD PER MANUFACTURER'S INSTALLATION INSTRUCTIONS AND AS DETAIL IN THE ARCHITECTURAL AND STRUCTURAL DRAWINGS. INSTALL HOOD ACCORDING TO THE REQUIREMENTS OF ITS LISTING IN COMPLIANCE WITH NFPA 96, THE BUILDING CODE, AND APPLICABLE JURISDICTION. HOOD SHALL HAVE AN INTEGRAL DUCT COLLAR FACTORY MANUFACTURED WATER AND AIR TIGHT. INSTALL CLEANINGS PER CODE AND AS SHOWN. INSTALL HOOD PER DETAILS 2, 4, AND 5/10/20. CHIPOTLE WILL PROVIDE AN INDEPENDENT TESTING AGENCY FOR TESTING THE INTEGRITY OF THE GREASE DUCT SYSTEM.
20. INSTALL REMOTE CONDENSER PUMP ICE MACHINE ON ROOF AS DETAIL IN THE ARCHITECTURAL AND STRUCTURAL DRAWINGS. INSTALL REFRIGERANT LINE SET, THERMOSTATIC EXPANSION VALVE, SERVICE VALVE, SOLENOID VALVE, TEMPERATURE CONTROL, SIGHT GLASS, THERMISTERS, PRESSURE CONTROL, LOW AMBIENT CONTROLS, AND WATERPROOF ROOFING. TRAP AND SLOPE REFRIGERANT LINES PER MANUFACTURER'S RECOMMENDATIONS. INSTALLATION SHALL COMPLY WITH ASHRAE/ANSI STANDARD 15. INSTALL THE REFRIGERANT LINE SET UNDER THE ROOF DECK TO THE ROOF DECK TO WITHIN 3" OF THE REMOTE CONDENSER. IF REFRIGERANT PIPING TO ICE MAKER IS EXPOSED TO PUBLIC VIEW CONCEAL WITHIN A STAINLESS STEEL SHROUD AS SHOWN IN THE ARCHITECTURAL AND STRUCTURAL DRAWINGS. INSTALLATION SHALL COMPLY WITH ASHRAE/ANSI STANDARD 15. INSTALL THE REFRIGERANT LINE SET UNDER THE ROOF DECK TO WITHIN 3" OF THE REMOTE CONDENSER. IF REFRIGERANT PIPING TO ICE MAKER IS EXPOSED TO PUBLIC VIEW CONCEAL WITHIN A STAINLESS STEEL SHROUD AS SHOWN IN THE ARCHITECTURAL AND STRUCTURAL DRAWINGS.
21. INSTALL EXHAUST FAN EF-1 PER DETAIL 5/10/20 AND AS DETAIL IN THE ARCHITECTURAL AND STRUCTURAL DRAWINGS. INSTALL GREASE VIRUGLAND SYSTEM FURNISHED BY CHIPOTLE ON EXHAUST FAN. EF-1.
22. PROVIDE 1" CLEARANCE BETWEEN ALL DUCTWORK AND STRUCTURAL MEMBERS. PROVIDE 1" CLEARANCE BETWEEN ALL DUCTWORK AND INTERLOCK SMOKE DETECTOR TO RTU-1 ORIENTATION.
23. PROVIDE 1" CLEARANCE BETWEEN ALL DUCTWORK AND STRUCTURAL MEMBERS. PROVIDE 1" CLEARANCE BETWEEN ALL DUCTWORK AND INTERLOCK SMOKE DETECTOR TO RTU-2 ORIENTATION.
24. PROVIDE 1" CLEARANCE BETWEEN ALL DUCTWORK AND STRUCTURAL MEMBERS. PROVIDE 1" CLEARANCE BETWEEN ALL DUCTWORK AND INTERLOCK SMOKE DETECTOR TO RTU-3 ORIENTATION.
25. PROVIDE 1" CLEARANCE BETWEEN ALL DUCTWORK AND STRUCTURAL MEMBERS. PROVIDE 1" CLEARANCE BETWEEN ALL DUCTWORK AND INTERLOCK SMOKE DETECTOR TO RTU-4 ORIENTATION.
26. INSTALL REME HALO AIR PURIFIER FURNISHED BY ITEM IN RTU PER DETAIL 5/10/20. SEE ELECTRICAL DRAWINGS FOR POWER CONNECTION INFORMATION. INSTALL UP WARNING STICKERS ON FACE OF ENCLOSURE PER DETAIL AND ON ANY RTU ACCESS DOOR THROUGH WHICH THE REME HALO WOULD BE VISIBLE IF OPENED.
27. PROVIDE 1" CLEARANCE BETWEEN ALL DUCTWORK AND STRUCTURAL MEMBERS. PROVIDE 1" CLEARANCE BETWEEN ALL DUCTWORK AND INTERLOCK SMOKE DETECTOR TO RTU-1 ORIENTATION.
28. PROVIDE 1" CLEARANCE BETWEEN ALL DUCTWORK AND STRUCTURAL MEMBERS. PROVIDE 1" CLEARANCE BETWEEN ALL DUCTWORK AND INTERLOCK SMOKE DETECTOR TO RTU-2 ORIENTATION.
29. PROVIDE 1" CLEARANCE BETWEEN ALL DUCTWORK AND STRUCTURAL MEMBERS. PROVIDE 1" CLEARANCE BETWEEN ALL DUCTWORK AND INTERLOCK SMOKE DETECTOR TO RTU-3 ORIENTATION.
30. PROVIDE 1" CLEARANCE BETWEEN ALL DUCTWORK AND STRUCTURAL MEMBERS. PROVIDE 1" CLEARANCE BETWEEN ALL DUCTWORK AND INTERLOCK SMOKE DETECTOR TO RTU-4 ORIENTATION.



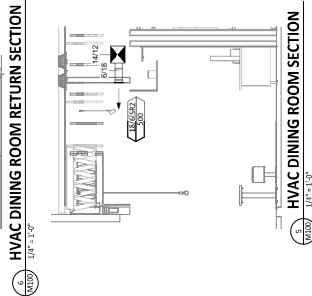
HVAC FLOOR PLAN



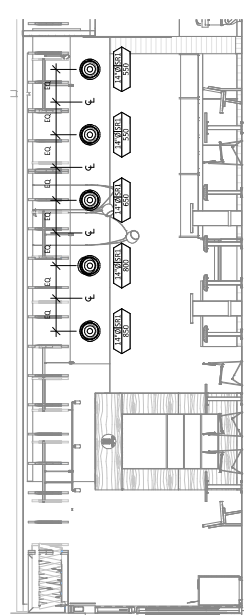
HVAC ROOF PLAN



HVAC DINING ROOM SECTION



HVAC DINING ROOM RETURN SECTION



HVAC DINING ROOM SECTION