

HOOD INFORMATION - JOB#4548697

HOOD TAG	MODEL	MANUFACTURER	LENGTH	MAX. COOKING TEMP	DUTY	TYPE	APPLIANCE DUTY	DESIGN EXH CFM	TOTAL EXH CFM	HOOD CONSTRUCTION	END TO ROW
1	5424	CAPTIVEARE	9' 0"	600 DEG	1	HEAVY	200	1800	1800	430 SS	LEFT ALDNE
2	5424	CAPTIVEARE	10' 0"	600 DEG	1	HEAVY	200	2000	2000	430 SS	RIGHT ALDNE

EXHAUST FAN INFORMATION - JOB#4548697

UNIT NO	TAG	QTY	FAN UNIT MODEL #	MANUFACTURER	CFM	ESP	RPM	VOLTR ENCL.	HP	BHP	FLA	DISCHARGE VELOCITY (FPM)	VELOCITY (FPM)	SDNES
1	KEF1	1	DUSHFA	CAPTIVEARE	1800	1150	1440	DDP	0.750 (0.5520)	2.08	2.6	570 FPM	100	175
2	KEF2	1	DUSHFA	CAPTIVEARE	2000	1070	1473	DDP	0.750 (0.5580)	3.208	2.6	630 FPM	100	181

MUA FAN INFORMATION - JOB#4548697

FAN TAG	QTY	FAN UNIT MODEL #	MANUFACTURER	CFM	ESP	RPM	VOLTR ENCL.	HP	BHP	FLA	MCA	MCPH	WEIGHT (LBS)	SDNES						
3	KSF 1	1	42-1250-200	RODIER	HOUSING 2000	1200	2000	3040	0.500	1.803	DDP PREMIUM	1300	1100	3	208	6.6	83A	154	700	111

AIR BALANCE SCHEDULE

TAG	ROOMS SERVED	O.A. CFM	EXHAUST CFM
EF-1	KITCHEN	-	-1800
EF-2	KITCHEN	-	-2000
MUA	KITCHEN	+3040	-
DISH FAN EXHAUST	KITCHEN	-	-600
HMC	BUILDING	-1350 (MIN)	-
NET		0 CFM	

DATE:	01/27/21
DRAWN BY:	JAH
SCALE:	NONE
REVISION:	DATE
	02/18/21

PERFORATED SUPPLY PLenums (RESERVED)

HOOD TAG	POS	LENGTH	WIDTH	HEIGHT	TYPE	WIDTH	LENGTH	IDA	CFM	SP
1	HD 1	Front	109"	14"	6"	MUA 12"	24"	720	01967	
2	HD 2	Front	132"	14"	6"	MUA 12"	24"	720	01967	

HOOD OPENINGS (RESERVED)

HOOD TAG	FIELD	W/WRAPER	16:00" HIGH	FRONT	430 SS VERTICAL
1	BACKSPASH	1180" HIGH X 300" LONG	430 SS VERTICAL		
1	LEFT SIDE SPASH	1180" HIGH X 540" LONG	430 SS VERTICAL		
1	RIGHT SIDE SPASH	1180" HIGH X 540" LONG	430 SS VERTICAL		

HOOD OPENINGS (RESERVED)

HOOD TAG	FIELD	W/WRAPER	16:00" HIGH	FRONT	430 SS VERTICAL
2	BACKSPASH	1180" HIGH X 300" LONG	430 SS VERTICAL		
2	LEFT SIDE SPASH	1180" HIGH X 540" LONG	430 SS VERTICAL		
2	RIGHT SIDE SPASH	1180" HIGH X 540" LONG	430 SS VERTICAL		

HOOD OPENINGS (RESERVED)

HOOD TAG	FIELD	W/WRAPER	16:00" HIGH	FRONT	430 SS VERTICAL
3	BACKSPASH	1180" HIGH X 300" LONG	430 SS VERTICAL		
3	LEFT SIDE SPASH	1180" HIGH X 540" LONG	430 SS VERTICAL		
3	RIGHT SIDE SPASH	1180" HIGH X 540" LONG	430 SS VERTICAL		

HOOD OPENINGS (RESERVED)

HOOD TAG	FIELD	W/WRAPER	16:00" HIGH	FRONT	430 SS VERTICAL
3	BACKSPASH	1180" HIGH X 300" LONG	430 SS VERTICAL		
3	LEFT SIDE SPASH	1180" HIGH X 540" LONG	430 SS VERTICAL		
3	RIGHT SIDE SPASH	1180" HIGH X 540" LONG	430 SS VERTICAL		

HOOD OPENINGS (RESERVED)

HOOD TAG	FIELD	W/WRAPER	16:00" HIGH	FRONT	430 SS VERTICAL
3	BACKSPASH	1180" HIGH X 300" LONG	430 SS VERTICAL		
3	LEFT SIDE SPASH	1180" HIGH X 540" LONG	430 SS VERTICAL		
3	RIGHT SIDE SPASH	1180" HIGH X 540" LONG	430 SS VERTICAL		

HOOD OPENINGS (RESERVED)

HOOD TAG	FIELD	W/WRAPER	16:00" HIGH	FRONT	430 SS VERTICAL
3	BACKSPASH	1180" HIGH X 300" LONG	430 SS VERTICAL		
3	LEFT SIDE SPASH	1180" HIGH X 540" LONG	430 SS VERTICAL		
3	RIGHT SIDE SPASH	1180" HIGH X 540" LONG	430 SS VERTICAL		

HOOD OPENINGS (RESERVED)

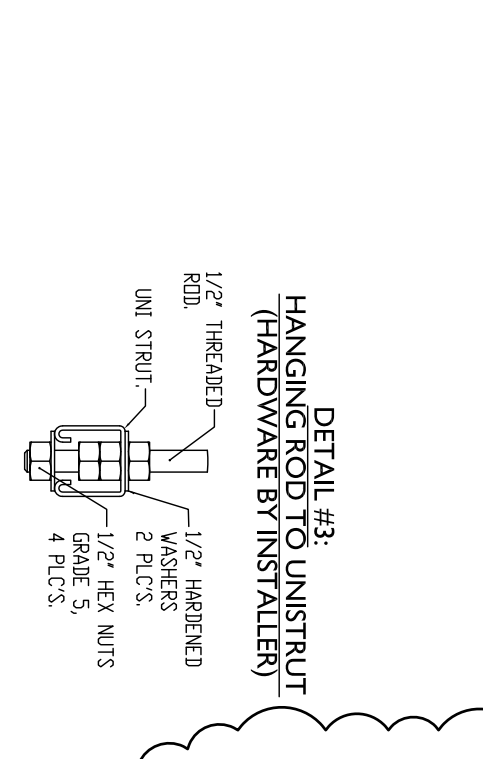
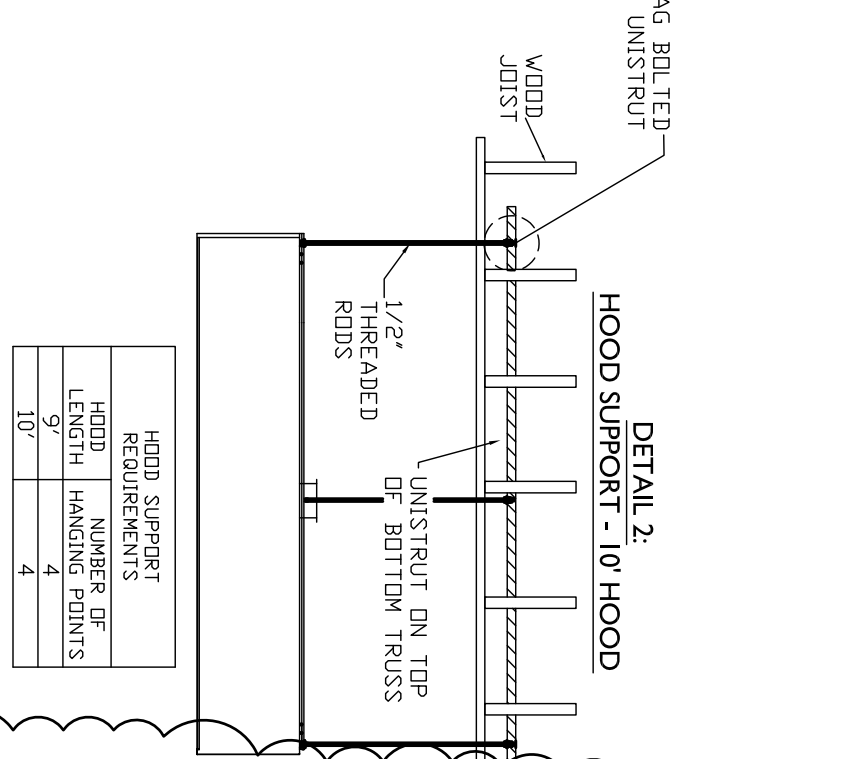
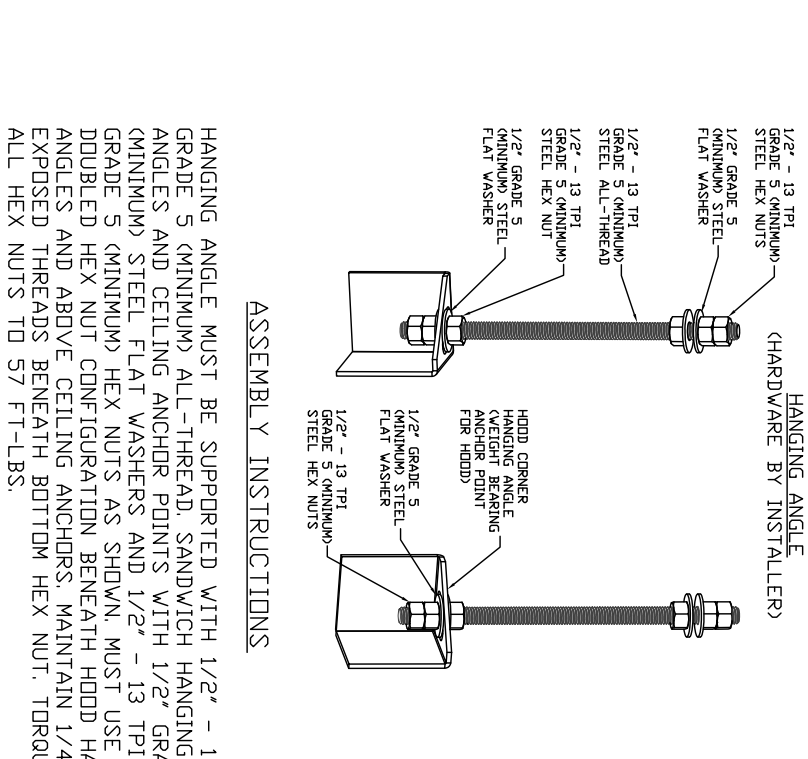
HOOD TAG	FIELD	W/WRAPER	16:00" HIGH	FRONT	430 SS VERTICAL
3	BACKSPASH	1180" HIGH X 300" LONG	430 SS VERTICAL		
3	LEFT SIDE SPASH	1180" HIGH X 540" LONG	430 SS VERTICAL		
3	RIGHT SIDE SPASH	1180" HIGH X 540" LONG	430 SS VERTICAL		

HOOD OPENINGS (RESERVED)

HOOD TAG	FIELD	W/WRAPER	16:00" HIGH	FRONT	430 SS VERTICAL
3	BACKSPASH	1180" HIGH X 300" LONG	430 SS VERTICAL		
3	LEFT SIDE SPASH	1180" HIGH X 540" LONG	430 SS VERTICAL		
3	RIGHT SIDE SPASH	1180" HIGH X 540" LONG	430 SS VERTICAL		

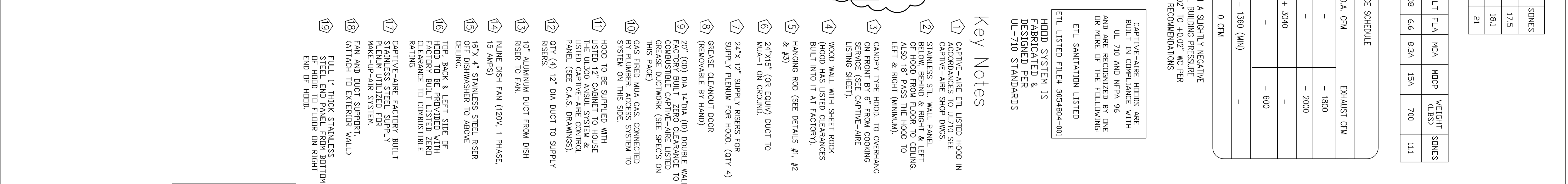
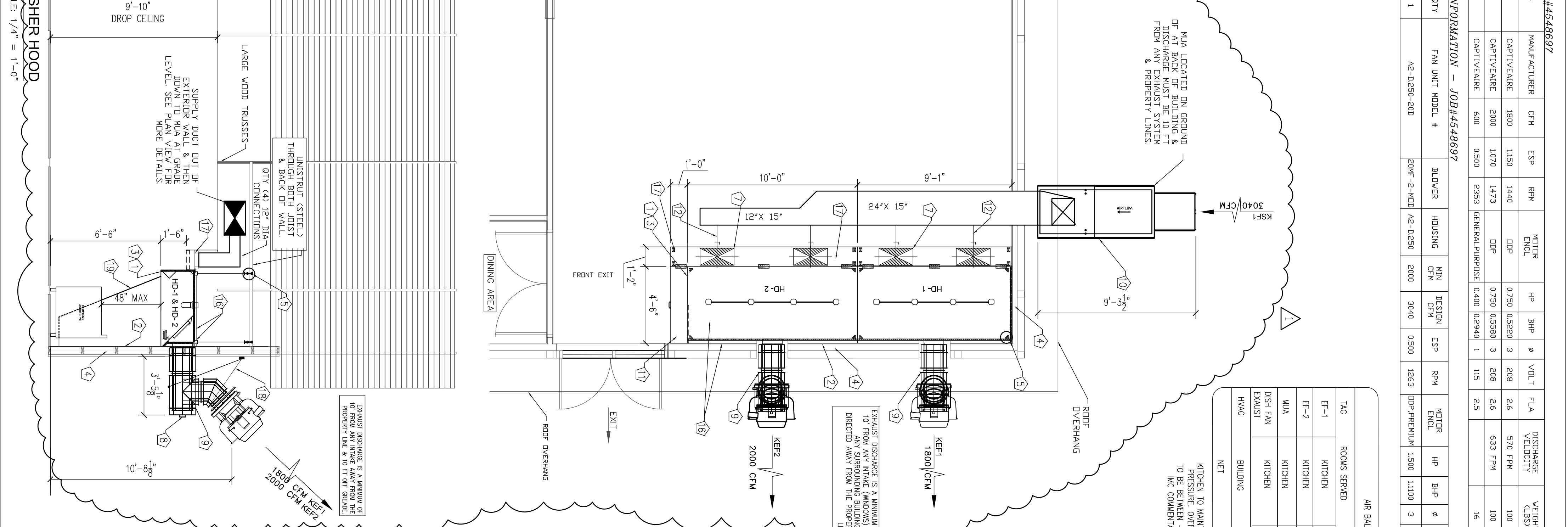
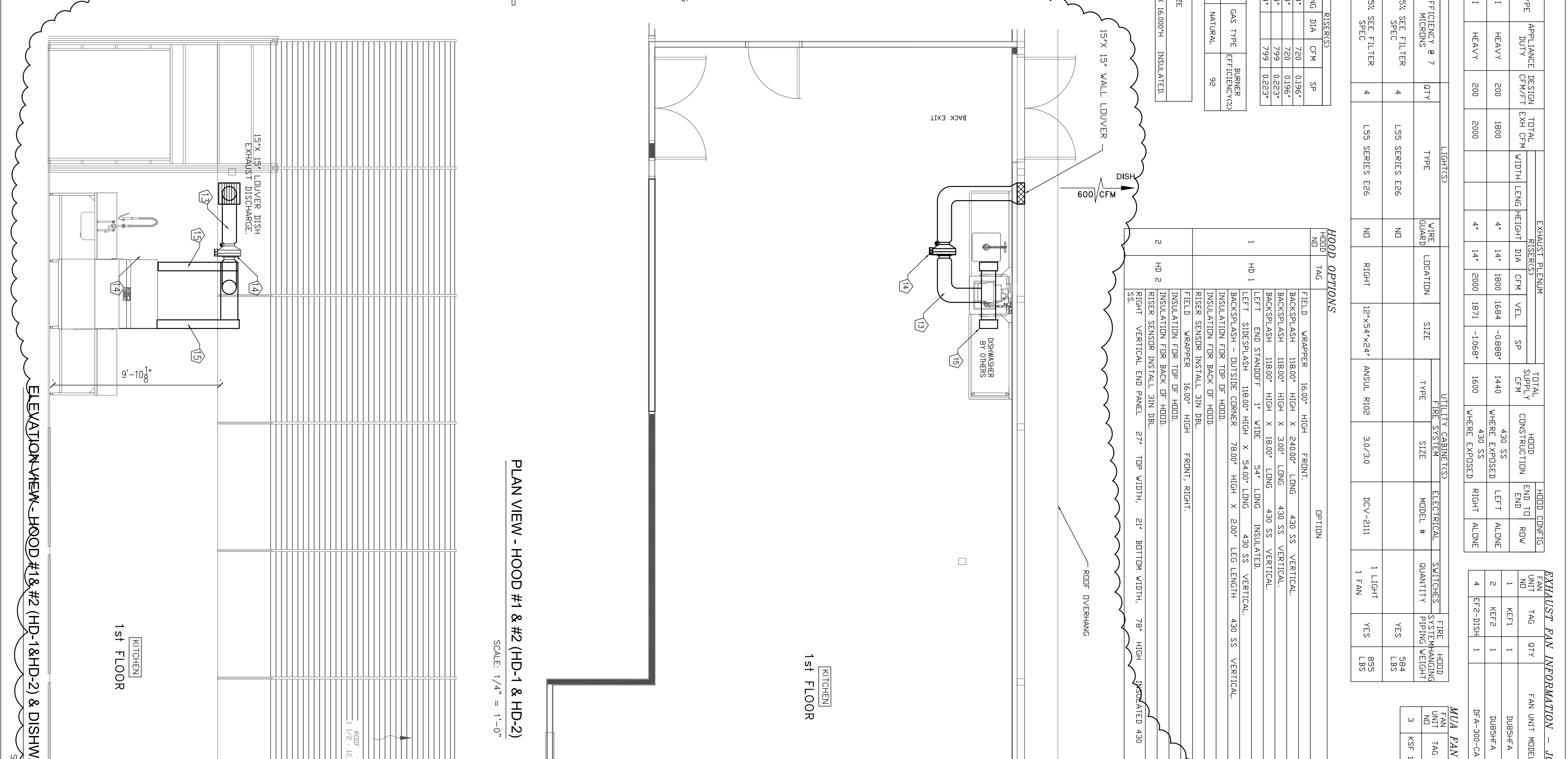
HOOD OPENINGS (RESERVED)

HOOD TAG	FIELD	W/WRAPER	16:00" HIGH	FRONT	430 SS VERTICAL
3	BACKSPASH	1180" HIGH X 300" LONG	430 SS VERTICAL		
3	LEFT SIDE SPASH	1180" HIGH X 540" LONG	430 SS VERTICAL		
3	RIGHT SIDE SPASH	1180" HIGH X 540" LONG	430 SS VERTICAL		



HOOD SUPPORT

HOOD TAG	LENGTH	WIDTH	HEIGHT	TYPE	WIDTH	LENGTH	IDA	CFM	SP
1	109"	14"	6"	MUA 12"	24"	720	01967		
2	132"	14"	6"	MUA 12"	24"	720	01967		



- Key Notes**
- CAPTIVE-ARE HT LISTED HOOD IN KITCHEN TO MAINTAIN A SLIGHTLY NEGATIVE PRESSURE. OVERALL BUILDING PRESSURE TO BE MAINTAINED AT LEAST 0.05 INCHES W.C. COMMENTARY RECOMMENDATIONS.
 - HOOD SYSTEM IS DESIGNED PER UL-710 STANDARDS.
 - CAPTIVE-ARE HT LISTED HOOD IN KITCHEN TO MAINTAIN A SLIGHTLY NEGATIVE PRESSURE. OVERALL BUILDING PRESSURE TO BE MAINTAINED AT LEAST 0.05 INCHES W.C. COMMENTARY RECOMMENDATIONS.
 - HOOD SYSTEM IS DESIGNED PER UL-710 STANDARDS.
 - CAPTIVE-ARE HT LISTED HOOD IN KITCHEN TO MAINTAIN A SLIGHTLY NEGATIVE PRESSURE. OVERALL BUILDING PRESSURE TO BE MAINTAINED AT LEAST 0.05 INCHES W.C. COMMENTARY RECOMMENDATIONS.
 - HOOD SYSTEM IS DESIGNED PER UL-710 STANDARDS.
 - CAPTIVE-ARE HT LISTED HOOD IN KITCHEN TO MAINTAIN A SLIGHTLY NEGATIVE PRESSURE. OVERALL BUILDING PRESSURE TO BE MAINTAINED AT LEAST 0.05 INCHES W.C. COMMENTARY RECOMMENDATIONS.
 - HOOD SYSTEM IS DESIGNED PER UL-710 STANDARDS.
 - CAPTIVE-ARE HT LISTED HOOD IN KITCHEN TO MAINTAIN A SLIGHTLY NEGATIVE PRESSURE. OVERALL BUILDING PRESSURE TO BE MAINTAINED AT LEAST 0.05 INCHES W.C. COMMENTARY RECOMMENDATIONS.
 - HOOD SYSTEM IS DESIGNED PER UL-710 STANDARDS.
 - CAPTIVE-ARE HT LISTED HOOD IN KITCHEN TO MAINTAIN A SLIGHTLY NEGATIVE PRESSURE. OVERALL BUILDING PRESSURE TO BE MAINTAINED AT LEAST 0.05 INCHES W.C. COMMENTARY RECOMMENDATIONS.
 - HOOD SYSTEM IS DESIGNED PER UL-710 STANDARDS.
 - CAPTIVE-ARE HT LISTED HOOD IN KITCHEN TO MAINTAIN A SLIGHTLY NEGATIVE PRESSURE. OVERALL BUILDING PRESSURE TO BE MAINTAINED AT LEAST 0.05 INCHES W.C. COMMENTARY RECOMMENDATIONS.
 - HOOD SYSTEM IS DESIGNED PER UL-710 STANDARDS.
 - CAPTIVE-ARE HT LISTED HOOD IN KITCHEN TO MAINTAIN A SLIGHTLY NEGATIVE PRESSURE. OVERALL BUILDING PRESSURE TO BE MAINTAINED AT LEAST 0.05 INCHES W.C. COMMENTARY RECOMMENDATIONS.

COOKING EQUIPMENT LAYOUT

- DOUBLE STACK CONNECTION OVEN
- DOUBLE STACK HYDRATION OVEN
- TILTING BRAISING SKILLET
- STEAM KETTLE
- 5 TILTING BRAISING SKILLET

FISCHER ENGINEERING SERVICES, LLC
MECHANICAL DESIGN & CONSULTING SERVICES
3872 Nottingham Ct.
Cleveland, Ohio 45002
Ph: 513-675-1559

MANAGED BY:
AIR SOLUTIONS, INC.
1329 E. KEMPER RD
CINCINNATI, OH 45246
PH: (513) 860-5555

COVERED WAGON
607 N Main St
Englewood, OH 45322
NEW COMMERCIAL HOOD IN KITCHEN