

Chick-fil-A

5200 Buffington Rd.
Atlanta Georgia,
30349-2998

Revisions:
Mark Date By
5/07/14

CODE COMMENTS
Mark Date By

Mark Date By

Mark Date By

Seal

Kurzynske & Associates
CONSULTING ENGINEERS
825 Third Avenue, South
Nashville, Tennessee 37210
Telephone: (615) 255-5203
Fax: (615) 255-5207
Email: mail@kurzynske.com

STORE
Albemarle Road
FSR # 0789
9010 Albemarle Rd.
Charlotte, NC
28227

SHEET TITLE
MECHANICAL
FLOOR PLAN

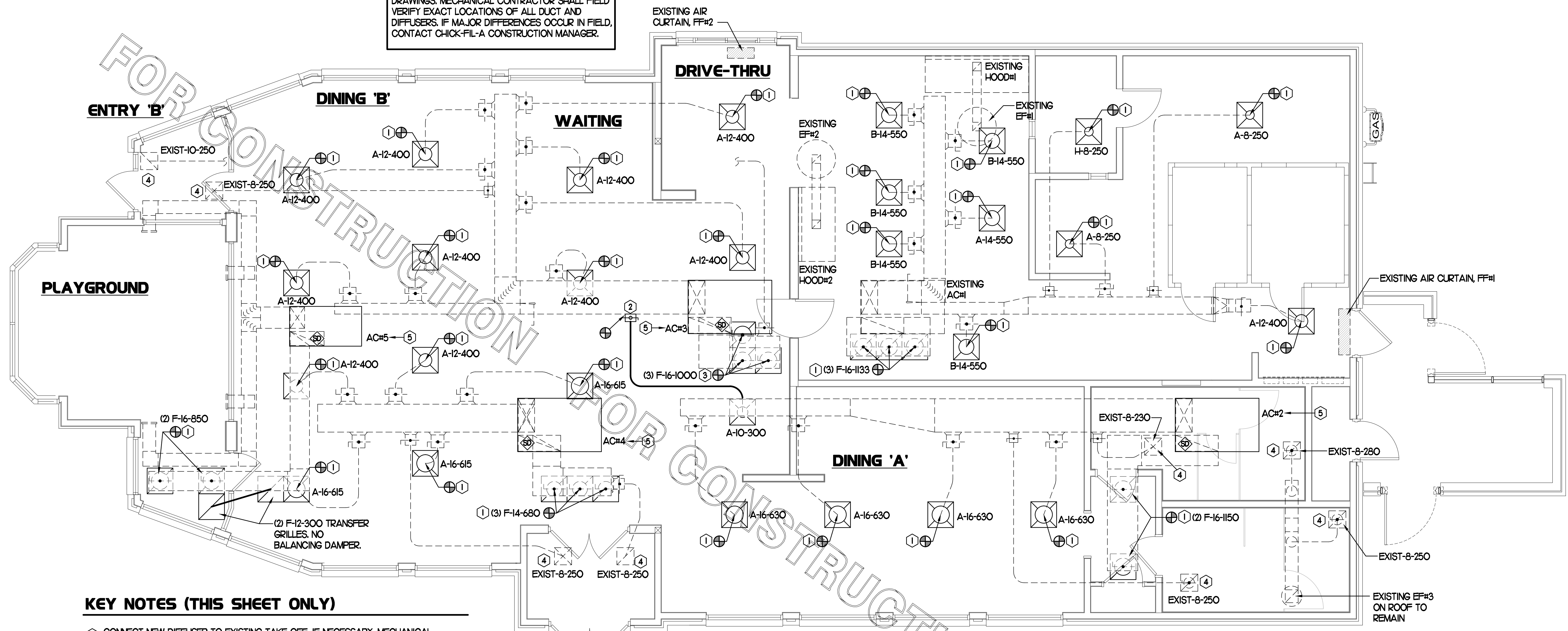
DWG EDITION 00-0
REVISION 00

Job No. : 13-526
Store : #0789
Date : 04.25.14
Drawn By : BM
Checked By: MK

Sheet

M.I.

EXISTING CONDITIONS SHOWN ARE FROM PREVIOUS DRAWINGS. MECHANICAL CONTRACTOR SHALL FIELD VERIFY EXACT LOCATIONS OF ALL DUCT AND DIFFUSERS. IF MAJOR DIFFERENCES OCCUR IN FIELD, CONTACT CHICK-FIL-A CONSTRUCTION MANAGER.



MECHANICAL FLOOR PLAN
SCALE: 1/4"=1'-0"

KEY NOTES (THIS SHEET ONLY)

- CONNECT NEW DIFFUSER TO EXISTING TAKE-OFF. IF NECESSARY, MECHANICAL CONTRACTOR SHALL PROVIDE AND INSTALL NEW DUCT IN ORDER TO MAKE CONNECTION TO DIFFUSER IN NEW LOCATION. ANY FLEX DUCT USED SHALL NOT BE LONGER THAN 4'-0". SEE DETAIL 1/M21.
- PROVIDE NEW 10" DIA. DUCT AND SPIN-IN FITTING. ROUTE DUCT TO DIFFUSER AS REQUIRED BY EXISTING STRUCTURE AND EQUIPMENT. TAKE-OFF NOT TO BE LOCATED CLOSER THAN 3'-0" FROM ANY ELBOW.
- ROUTE NEW DUCT FROM EXISTING OPENING IN RETURN AIR PLENUM TO NEW DIFFUSER. PROVIDE NEW SPIN-IN COLLAR FOR CONNECTION TO PLENUM. RE-USE EXISTING PLENUM OPENINGS WHERE ABLE, RE-CUT WHERE NECESSARY. PATCH & REPAIR PLENUM AIR-TIGHT AND RE-INSULATE WHERE NECESSARY.
- VERIFY DIFFUSER IS RESTORED TO "LIKE NEW" CONDITION. RE-CONNECT DIFFUSER TO MATCHING DUCT FITTING AND REPLACE IN CEILING. PATCH AND REPAIR CEILING AROUND DIFFUSER WHERE NECESSARY.
- PROVIDE AND INSTALL NEW A/C UNIT, AS SCHEDULED ON SHEET M21. CURB FOOTPRINT HAS CHANGED AND WILL REQUIRE A CURB ADAPTER. PROVIDE SUFFICIENT LEAD TIME FOR FABRICATION AND DELIVERY OF CURB ADAPTER. FIELD VERIFY DIMENSIONS AND EQUIPMENT CLEARANCES ARE MET PRIOR TO ORDERING CURB ADAPTER. VERIFY OUTSIDE AIR INTAKE OF A/C UNIT IS A MINIMUM OF 10'-0" AWAY FROM ANY SOURCE OF EXHAUST AIR OR POLLUTANT. IF NECESSARY, DUCT OUTSIDE AIR AWAY FROM SOURCE OF POLLUTANT. RE-CONNECT EXISTING UNIT CONTROLS TO NEW A/C UNIT. VERIFY CONTROLS ARE IN GOOD, WORKING CONDITION. IF NOT, CONTACT CFA CONSTRUCTION MANAGER. TYPICAL OF AC#2, AC#3, AC#4, AC#5.

LEGEND

A-12-400	TYPE - NECK SIZE - CFM	KEY NOTE REFERENCE
	SPIN-IN FITTING, MVD, NO SCOOP	EXISTING START COLLAR
	EXISTING RUNOUT TO REMAIN	EXISTING RETURN/EXHAUST (TYP.)
	SPIN-IN	EXISTING SUPPLY DIFFUSER (TYP.)
	HARD ϕ	EXISTING DUCT (TYP.)
	FLEXIBLE ϕ	NEW RETURN/EXHAUST, UNO. (TYP.)
	DIFFUSER	NEW SUPPLY DIFFUSER, UNO. (TYP.)
	REMOTE TEMPERATURE SENSOR	NEW DUCT (TYP.)
	REMOTE HUMIDITY SENSOR	DIRECTION OF THROW
	SMOKE DETECTOR	MANUAL VOLUME DAMPER
	GREASE ACCESS DOOR TYPE	
	POINT OF CONNECTION TO EXISTING	
	DIRECTION OF THROW	
	MANUAL VOLUME DAMPER	

SHEET NOTES

- DUCT SIZES SERVING DIFFUSERS AND GRILLES ARE SAME SIZE AS DIFFUSER OR GRILLE NECK UNLESS NOTED OTHERWISE.
- HARDPIPE SHALL BE USED FOR ALL TAKE-OFFS EXCEPT WHERE ALLOWED BY DETAIL 1/M21. USE OF FLEXIBLE DUCT SHALL BE LIMITED TO THOSE SITUATIONS WHERE NO OTHER MEANS TO ACCOMPLISH ROUTING IS POSSIBLE.
- COORDINATE NEW WORK WITH EXISTING CONDUITS, STRUCTURE AND PIPING. FIELD VERIFY EXISTING CONDITIONS PRIOR TO COMMENCING WORK. CONTRACTOR TO NOTIFY DESIGN TEAM WITHOUT DELAY IF ACTUAL LOCATION OF EXISTING MECHANICAL EQUIPMENT DOES NOT MATCH FLOOR PLAN.
- MECHANICAL CONTRACTOR SHALL BALANCE HVAC SYSTEM AS SHOWN ON THIS PLAN & IN SCHEDULES ON SHEET M-31. IF AIRFLOWS DIFFER BY MORE THAN 5%, CONTACT CFA CONSTRUCTION MANAGER. TEST AND BALANCE REPORT SHALL BE DONE PRIOR TO STORE TURNOVER AND SUBMITTED TO CFA'S CONSTRUCTION MANAGER.

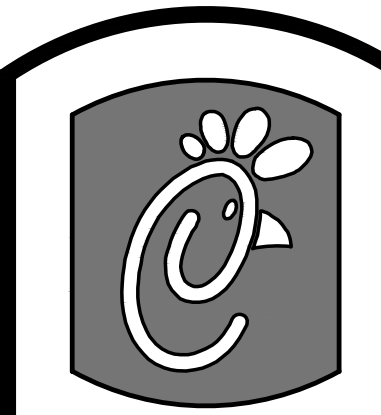
OUTSIDE AIR CALCULATIONS

OCCUPANCY CLASSIFICATION	AREA (SF)	AREA OUTDOOR AIRFLOW RATE IN BREATHING ZONE (CFM/F2)	OUTDOOR AIR REQD (CFM/F2)	PEOPLE OUTDOOR AIRFLOW RATE IN BREATHING ZONE (CFM/PERSON)	DEFAULT OCCUPANCY DENSITY (W/OCC/F2)	OUTDOOR AIR REQD (CFM/PERSON)	TOTAL O.A. REQD (CFM)	EXHAUST AIRFLOW RATE (CFM/F2) OR (CFM/W.C.)	TOTAL EXHAUST REQD (CFM)	TOTAL EXHAUSTED FROM AREA (CFM)	OUTDOOR AIR SUPPLIED (CFM - A/C UNIT)
RESTROOMS	97	-	-	-	-	-	-	50 / W.C.	200	530	112 - AC#2
PLAY AREA	279	0.30	84	-	-	-	84	-	-	-	300 - AC#5
DINING ROOMS	2041	0.18	368	7.5	70	1,073	1,441	-	-	-	1608 - AC#2, AC#3, AC#4
KITCHEN	1,003	-	-	-	-	-	-	0.7	702	2,002	943 - AC#1
CORRIDORS	113	0.06	7	-	-	-	7	-	-	-	88 - AC#3, AC#4
OFFICE SPACE	57	0.06	4	5.0	50	15	19	-	-	-	57 - AC#1

NOTE: CALCULATIONS ARE BASED ON 2012 NORTH CAROLINA MECHANICAL CODE - TABLE 403.3.

TOTAL AIR BALANCE SCHEDULE

EQUIPMENT MARK	AC #1	AC #2	AC #3	AC #4	AC #5	EF #1	EF #2	EF #3	TOTAL
SERVES	KITCHEN	DINING (SIDE)	DINING (MAIN)	DINING (MAIN)	PLAY AREA	HOOD#1	HOOD#2	RR	
SUPPLY AIR CFM	4,400	3,000	3,750	2,895	2,000				+16,045
RETURN AIR CFM	3,400	2,300	3,250	2,290	1,700				+12,940
OUTSIDE AIR CFM	1,000	700	500	605	300				+3,105
EXHAUST CFM						1,144	858	530	-2,532
PRESSURIZATION									+573
REMARKS	ADJUST AND VERIFY BALANCE OF ALL HVAC EQUIPMENT IS AS SHOWN IN ORDER TO MAINTAIN BUILDING AIR BALANCE.								



Chick-fil-e

5200 Buffington Rd.
Atlanta Georgia,
30349-2998

Revisions:
Mark Date By

△

Mark Date By

△

Mark Date By

△

Mark Date By

△

Seal

Kurzynske & Associates
CONSULTING ENGINEERS
825 Third Avenue, South
Nashville, Tennessee 37210
Telephone: (615) 255-5203
Fax: (615) 255-5207
Email: mail@kurzynske.com

STORE
Albemarle Road
FSR # 0789
9010 Albemarle Rd.
Charlotte, NC
28227

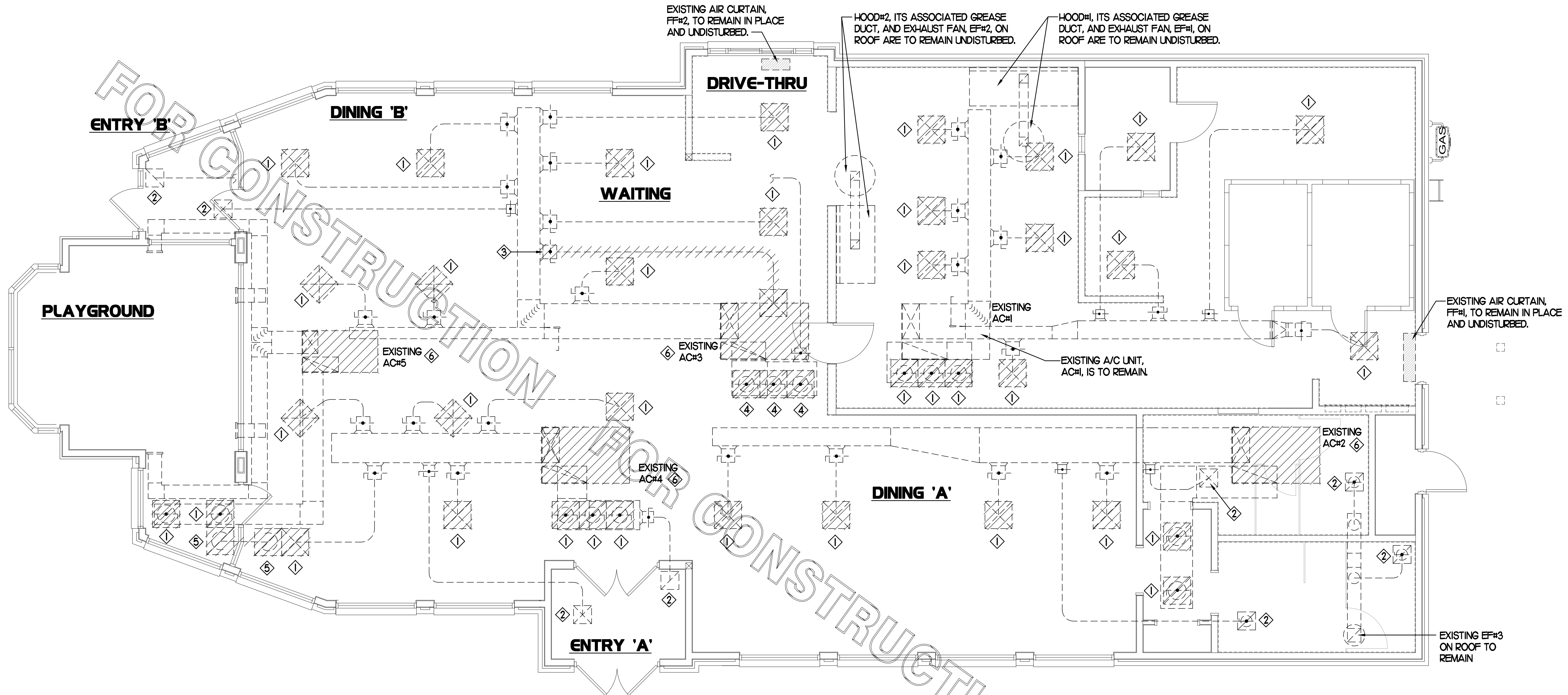
SHEET TITLE
MECHANICAL
DEMO PLAN

DWG EDITION 00-0
REVISION 00

Job No. : 13-526
Store : #0789
Date : 04.25.14
Drawn By : BM
Checked By: MK

Sheet

MO.I



DEMOLITION NOTES

- ① CONTRACTOR IS RESPONSIBLE FOR OBTAINING ALL NECESSARY PERMITS AND PAYING ALL APPLICABLE FEES.
- ② DISPOSAL OF EQUIPMENT AND MATERIALS REQUIRED TO BE REMOVED SHALL BE THE RESPONSIBILITY OF THE CONTRACTOR PERFORMING THE WORK.
- ③ DE-ENERGIZE ALL ELECTRICAL CIRCUITS RELATED TO EQUIPMENT THAT WILL BE MOVED OR REMOVED PRIOR TO STARTING WORK. DE-ENERGIZED CIRCUITS SHALL BE PROTECTED WITH LOCKING DEVICES USING APPROPRIATE WARNING LABELS.
- ④ MECHANICAL CONTRACTOR SHALL BE RESPONSIBLE FOR PATCHING ROOF AFTER REMOVAL OF EXISTING MECHANICAL EQUIPMENT. SEE ARCHITECTURAL DRAWINGS FOR ROOF PATCHING REQUIREMENTS.
- ⑤ EXCEPT WHERE NOTED, EXISTING REMOTE TEMPERATURE &/OR HUMIDITY SENSORS TO REMAIN IF DURING RENOVATION PURPOSES CONTROLS SHALL BE TAKEN DOWN, MECHANICAL CONTRACTOR SHALL BE RESPONSIBLE FOR REINSTALLING AND TO PROVIDE ANY ADDITIONAL WIRING NEEDED.
- ⑥ MECHANICAL CONTRACTOR SHALL PERFORM ROUTINE MAINTENANCE ON EXISTING ROOFTOP UNITS AND MAKE ANY NECESSARY REPAIRS. VERIFY EXISTING UNITS ARE FULLY CHARGED WITH NECESSARY REFRIGERANT WITH NO LEAKS, NEW BELTS AND REPLACE AND FAN MOTORS NECESSARY.
- ⑦ CONTRACTOR SHALL INDICATE SALVAGE VALUE IN BID FOR ROOFTOP UNITS BEING REPLACED.

MECHANICAL DEMOLITION FLOOR PLAN

SCALE: 1/4"=1'-0"

DEMOLITION LEGEND

	EXISTING EQUIPMENT, DUCT, AIR DEVICE ETC. TO REMAIN INTACT
	EQUIPMENT, DUCT, AIR DEVICE ETC. TO BE DEMOLISHED

DEMOLITION KEY NOTES

- ① DETACH AND DEMOLISH EXISTING DIFFUSER. SECURE DUCT ABOVE CEILING GRID.
- ② DETACH DIFFUSER FROM DUCT FOR CLEANING. DIFFUSER TO BE RESTORED TO "LIKE NEW" CONDITION. LABEL DUCT FITTING AND ITS CORRESPONDING DIFFUSER FOR RE-ATTACHMENT.
- ③ DEMOLISH EXISTING SPIN-IN FITTING, ALL DUCT, AND THE DIFFUSER DOWNSTREAM. PATCH AND REPAIR TRUNK DUCT AIR-TIGHT AND RE-INSULATE.
- ④ DEMOLISH EXISTING DIFFUSER AND ALL DUCT & FITTINGS UPSTREAM TO RETURN AIR PLENUM.
- ⑤ DEMOLISH TRANSFER GRILLE AND DUCT CONNECTED TO GRILLE. TYPICAL OF TWO.
- ⑥ DEMOLISH EXISTING A/C UNIT ON ROOF. EXISTING UNIT CURB AND CONTROLS ARE TO REMAIN FOR RE-USE. UNITS ENTIRE AIR DISTRIBUTION SYSTEM IS TO REMAIN UNLESS NOTED OTHERWISE.

I. SECTION C1500 - MECHANICAL SPECIFICATIONS

PART I - GENERAL

- 1.01 SCOPE
- A. IT IS THE RESPONSIBILITY OF CONTRACTOR TO READ ALL SPECIFICATIONS AND CONSULT ALL DRAWINGS WHICH MAY AFFECT THE INSTALLATION AND COORDINATION OF HIS WORK WITH OTHER TRADES. CONTRACTOR SHALL COORDINATE AND MAKE MINOR ADJUSTMENTS IN LOCATION OF EQUIPMENT AND MATERIALS AS NECESSARY TO SECURE COORDINATION.
- B. COMPLETED INSTALLATION SHALL CONFORM TO ALL APPLICABLE FEDERAL, STATE AND LOCAL CODES AND ORDINANCES, INCLUDING BUT NOT LIMITED TO THE LATEST APPROVED EDITIONS OF NFPA 96, NFPA-90A, NFPA-54, SMACNA, ASHRAE 90.1 AND ASHRAE 62.
- C. SYSTEM LAYOUT IS SCHEMATIC AND EXACT LOCATIONS SHALL BE DETERMINED BY STRUCTURAL CONDITIONS, COORDINATION WITH OTHER TRADES, COORDINATION WITH FINISHES AND OTHER CONDITIONS. STRUCTURAL SUPPORTS SHALL NOT BE CUT OR ALTERED TO ASSURE FIT OF HVAC SYSTEM. TEN FOOT CLEARANCE SHALL BE MAINTAINED BETWEEN OUTSIDE AIR INTAKES AND EXHAUST FANS AND PLUMBING VENT TERMINALS.
- D. CONTRACTOR SHALL BE RESPONSIBLE FOR ALL DEFECTS, REPAIRS AND REPLACEMENTS IN MATERIALS AND WORKMANSHIP FOR A PERIOD OF ONE (1) YEAR AFTER FINAL PAYMENT IS APPROVED. CONTRACTOR SHALL HONOR FACTORY WARRANTIES ON ALL EQUIPMENT PROVIDED AS PART OF THIS SYSTEM.
- E. UPON COMPLETION OF PROJECT, ALL SYSTEM EQUIPMENT AND MATERIALS SHALL BE IN NEW, CLEAN CONDITION WITH ALL DAMAGE RESTORED TO CONDITION ACCEPTABLE TO THE OWNERS REPRESENTATIVE. ALL EQUIPMENT, COMPONENTS AND DUCTWORK SHALL BE INSPECTED AND THOROUGHLY CLEANED, READY FOR USE. AT COMPLETION OF JOB, ALL MISCELLANEOUS TOOLS, SCAFFOLDING, SURPLUS MATERIALS, RUBBISH AND DEBRIS SHALL BE REMOVED BY CONTRACTOR.
- F. CONTRACTOR SHALL PROVIDE TWO SETS OF 2" MERV 8 OR HIGHER THROW AWAY TYPE FILTERS. A CLEAN SET SHALL BE PROVIDED PRIOR TO TEST AND BALANCE AND AGAIN PRIOR TO OPENING.

PART II - PRODUCTS

- 2.01 HEATING AND COOLING EQUIPMENT (C15730)
- A. FURNISH AND INSTALL R-410A ROOFTOP SINGLE PACKAGE COMBINATION ELECTRIC COOLING AND NATURAL GAS FIRED HEATING UNITS BY LENNOX AS SHOWN ON DRAWINGS. EQUIPMENT SHALL BE ARI CERTIFIED AND A.G.A. AND U.L. LISTED.
- B. ACCESSORIES SHALL INCLUDE LOW AND HIGH PRESSURE SAFETIES, CRANK CASE HEATER, OVERCURRENT AND OVERTEMPERATURE SAFETY, COMPRESSOR VIBRATION ISOLATORS, FILTER DRIERS, REFRIGERANT SERVICE VALVES, COIL HAIL GUARDS WHERE SCHEDULED, CONVENIENCE OUTLETS FACTORY INSTALLED ON SCHEDULED UNITS, UNIT MOUNTED NON-FUSED DISCONNECTS, LOW AMBIENT OPERATION DOWN TO 30 DEGREES F AND EVAPORATOR FREEZE STAT.
- C. COMPRESSORS SHALL BE FULLY HERMETIC SCROLL TYPE WITH INTERNAL VIBRATION ISOLATORS. COMPRESSORS SHALL BE PROVIDED WITH A MINIMUM FIVE (5) YEAR FULL WARRANTY.
- D. THE UNIT HEAT EXCHANGERS SHALL BE STEEL WITH ALUMINIZED STEEL COATING. HEATING CONTROLS SHALL CONSIST OF REDUNDANT GAS VALVES, INTERMITTENT PILOT WITH ELECTRONIC SPARK OR HOT PLATE IGNITION SYSTEM, COMBUSTION/EXHAUST FAN PROTECTED BY CENTRIFUGAL SWITCHES, HEAT LIMIT SWITCHES, TIME-DELAY RELAY, FLAME, AND PILOT SENSORS. ALL UNITS SHALL BE CAPABLE OF TWO STAGES OF HEAT. HEAT EXCHANGES SHALL HAVE A TEN (10) YEAR WARRANTY. BURNERS SHALL BE ALUMINIZED IN-SHOT TYPE. THE DRAFT MOTOR SHALL BE MONITORED BY THE CONTROL SYSTEM.
- E. CHICK-FIL-A MAINTAINS A NATIONAL ACCOUNT FOR EQUIPMENT WITH LENNOX CORPORATION. PRICING FOR THE EQUIPMENT HAS BEEN ESTABLISHED IN ADVANCE. CONTACT LENNOX NATIONAL ACCOUNTS AT 972-497-6260 (OR BY FAX AT 972-497-5112) FOR PRICING, ORDERING AND AVAILABILITY.

2.02 DUCTWORK (C15735)

- A. ACCEPTABLE MANUFACTURERS OF INSULATION ARE MANVILLE, OWENS CORNING OR KNAUF.
- B. ALL DUCTWORK SHALL BE SHEET METAL, UNLESS NOTED OTHERWISE (U.N.O.).
- C. DUCT DIMENSIONS SHOWN ARE INSIDE CLEAR DIMENSIONS, U.N.O.
- D. CONSTRUCTION OF DUCTWORK SHALL MEET SMACNA 1" W.C. PRESSURE CLASS STANDARD AND RECOMMENDATIONS. SMACNA SHALL BE FOLLOWED WITH RESPECT TO GAUGE THICKNESS, JOINTS, REINFORCING, CONSTRUCTION, INSTALLATION AND SUPPORT FOR PRESSURE CLASS STATED. ALL TRANSVERSE JOINTS IN RECTANGULAR AND ROUND DUCT SHALL BE SEALED PER SMACNA SEAL CLASS C WITH U.L. DUCT MASTIC SEALANT APPROVED FOR INTENDED USE. DUCT TAPE IS NOT AN ACCEPTABLE SUBSTITUTE FOR MASTIC UNLESS EQUAL TO HARDCAST FOIL-GRIP 1402 BUTYL RUBBER ADHESIVE TAPE.
- E. ALL DUCT INSULATION SHALL MEET MINIMUM R-VALUE REQUIRED BY ASHRAE 90.1 LATEST EDITION. ALL DUCT WRAP SHALL BE MINIMUM 2" THICK, 3/4 PCF AND 5.6 R-VALUE INSTALLED WITH EITHER A VAPOR BARRIER WITH MAXIMUM PERMEANCE 0.05 OR A MINIMUM 2 MIL ALUMINUM REINFORCED FOIL/KRAFT FACING.
- F. ALL DUCT DROPS FROM THE ROOFTOP UNITS SHALL BE EXTERNALLY INSULATED.
- G. SUPPLY AND RETURN AIR DUCTWORK SERVING ALL AREAS SHALL BE EXTERNALLY INSULATED.
- H. ALL AIR CONVEYANCE COMPONENTS SUCH AS, BUT NOT LIMITED TO DUCT, DUCT PLENUMS, GRILLES/DIFFUSERS, BACK PANS, AND BOOTS SHALL BE INSULATED. INSULATION TYPE IS COVERED ELSEWHERE IN THIS SPECIFICATION.
- I. TRUNK DUCTS SHALL BE ISOLATED FROM UNIT VIBRATION WITH THE USE OF NFPA AND U.L. APPROVED FLEXIBLE CONNECTORS INSTALLED AT THE TOP OF BOTH SUPPLY AND RETURN DROPS.
- J. INSULATED FLEXIBLE DUCT MAY BE UTILIZED FOR RUNOUTS TO GRILLES AND DIFFUSERS ONLY IN THE HORIZONTAL POSITION AND IN MAXIMUM LENGTHS OF 4'-0", NO EXCEPTIONS. SEE TAKE-OFF DETAIL ON DRAWING M2.1.
- K. CONSTRUCTION OF FLEXIBLE DUCTWORK SHALL INCLUDE SPIRAL METAL HELIX BONDED TO A POLYESTER CORE, FIBERGLASS INSULATION WITH POLYETHYLENE OR MYLAR VAPOR BARRIER. ALL COMPONENTS SHALL HAVE APPROPRIATE U.L. APPROVAL AND SHALL BE EQUIVALENT TO THERMAFLEX MKE.
- L. FLEXIBLE DUCT SHALL BE INSTALLED PER THE "ADC FLEXIBLE DUCT PERFORMANCE AND INSTALLATION STANDARDS, 4TH ED" USING FOIL TAPE AND DRAWBAND ON THE INNER CORE AND TAPE OR DRAWBAND ON THE OUTER JACKET.
- M. DUCT TAPE SHALL BE EQUAL TO FASSON 181-B FX, 2-1/2" WIDE.
- N. SINGLE THICKNESS TURNING VANES SHALL BE INSTALLED AT 90 DEGREE TURNS IN SUPPLY DUCTWORK WHERE ANY ONE DIMENSION IS GREATER THAN 12".
- O. RADIUSSED ELBOWS MAY BE SUBSTITUTED FOR 90 DEGREE ELBOWS AT THE DISCRETION OF THE CONTRACTOR. CENTERLINE RADIUS EQUAL TO; R=W PER FIGURE NO. 2-2 IN SMACNA HVAC DUCT CONSTRUCTION STANDARDS.
- P. EXTERNAL INSULATION ON BOTTOM OF DUCTS 24" OR WIDER SHALL BE SUPPORTED WITH STICK PINS ON 18" CENTERS. STICK PIN WASHERS SHALL BE COVERED WITH DUCT TAPE OR MASTIC.

2.03 CONTROLS (C15735)

- A. SYSTEMS SHALL BE COMPLETE WITH CONNECTIONS TO CFA-500 TEMPERATURE CONTROL PANEL AS MANUFACTURED BY SUNCOAST ENVIRONMENTAL CONTROLS (S.E.C.) (PH: 877-544-6679). THE PANEL IS PROVIDED AND MOUNTED BY THE ELECTRICAL CONTRACTOR. CONTROL WIRING TERMINATIONS ARE BY THE MECHANICAL CONTRACTOR.
- B. THE SMOKE DETECTORS SHALL BE FACTORY INSTALLED AND WIRED BY THE ROOFTOP UNIT MANUFACTURER.
- C. A FACTORY INSTALLED SMOKE DETECTOR IN THE RETURN AIR SECTION OF EACH AIR CONDITIONING UNIT SHALL STOP THE INDOOR FAN AND CLOSE THE OUTSIDE AIR DAMPER IN THE EVENT OF EXCESSIVE TEMPERATURE OR SMOKE. SMOKE DETECTOR SHALL BE LOCATED PRIOR TO ANY EXHAUST FROM THE BUILDING OR MIXING WITH FRESH AIR MAKE-UP. UPON DETECTION, THE SYSTEM SHALL NOT RESTART UNTIL THE DEVICE IS MANUALLY RESET. DEVICES SHALL BE LOCATED WHERE THEY CAN BE EASILY ACCESSED AND WHERE CLEAR OF FILTERS.
- D. CHICK-FIL-A HAS A NATIONAL ACCOUNT WITH SUNCOAST ENVIRONMENTAL CONTROLS FOR THE SMOKE DETECTOR TEST/RESET ANNUNCIATOR STATIONS. THE TEST/RESET STATIONS WILL BE PURCHASED BY THE ELECTRICAL CONTRACTOR AS A PART OF A NATIONAL ACCOUNT PACKAGE AND TURNED OVER TO THE MECHANICAL CONTRACTOR FOR INSTALLATION.
- E. THE REMOTE TEST/RESET ANNUNCIATORS SHALL BE PROVIDED BY THE ELECTRICAL CONTRACTOR AND INSTALLED BY THE MECHANICAL CONTRACTOR. INSTALLATION BY MECHANICAL SHALL INCLUDE MOUNTING OF THE ANNUNCIATORS AND ALL WIRING FROM EACH DEVICE TO THE RTU. ELECTRICAL WILL PROVIDE A JUNCTION BOX IN THE WALL WITH 1/2" CONDUIT STUBBED UP ABOVE THE CEILING FOR EACH REMOTE TEST STATION AS SHOWN ON THE ELECTRICAL PLANS. ANNUNCIATOR SHALL BE SUNCOAST CONTROLS REMOTE TEST/RESET STATION WITH POWER LED, TROUBLE LED, ALARM LED, 90DB HORN AND TEST/RESET BUTTON.
- F. NOT USED
- G. NOT USED.

PART III - EXECUTION

- 3.01 SCOPE
- A. FURNISH AND INSTALL SYSTEM IN ACCORDANCE WITH REFERENCED STANDARDS, APPLICABLE CODES, MANUFACTURER'S RECOMMENDATIONS AND AS INDICATED ON DRAWINGS.
- B. OWNER SHALL TEST AND BALANCE MECHANICAL SYSTEM IN ACCORDANCE WITH NBI OR AABC STANDARDS TO ASSURE CONFORMANCE WITH DESIGN. G.C. WILL MAKE MECHANICAL CONTRACTOR AVAILABLE DURING TEST AND BALANCE TO ASSIST TESTING AGENCY AND TO MAKE CORRECTIONS IMMEDIATELY NECESSARY. CONTRACTOR SHALL CORRECT ITEMS ON WRITTEN TEST AND BALANCE REPORT.
- C. CONTRACTOR SHALL INSTRUCT THE OWNER'S REPRESENTATIVE IN ALL MATTERS PERTAINING TO THE PROPER MAINTENANCE OF EQUIPMENT FURNISHED UNDER THIS CONTRACT THROUGH DEMONSTRATION AND EXPLANATION OF OPERATING & MAINTENANCE MANUALS.
- D. CONTRACTOR SHALL PROVIDE A "SAMPLE MAINTENANCE PROPOSAL" TO THE OWNER'S REPRESENTATIVE IN ALL MATTERS PERTAINING TO THE PROPER MAINTENANCE OF EQUIPMENT FURNISHED UNDER THIS CONTRACT.
- E. CONTRACTOR SHALL COMPLETE A/C EQUIPMENT STARTUP DOCUMENTATION PROVIDED BY OWNER.

NATIONAL ACCOUNTS

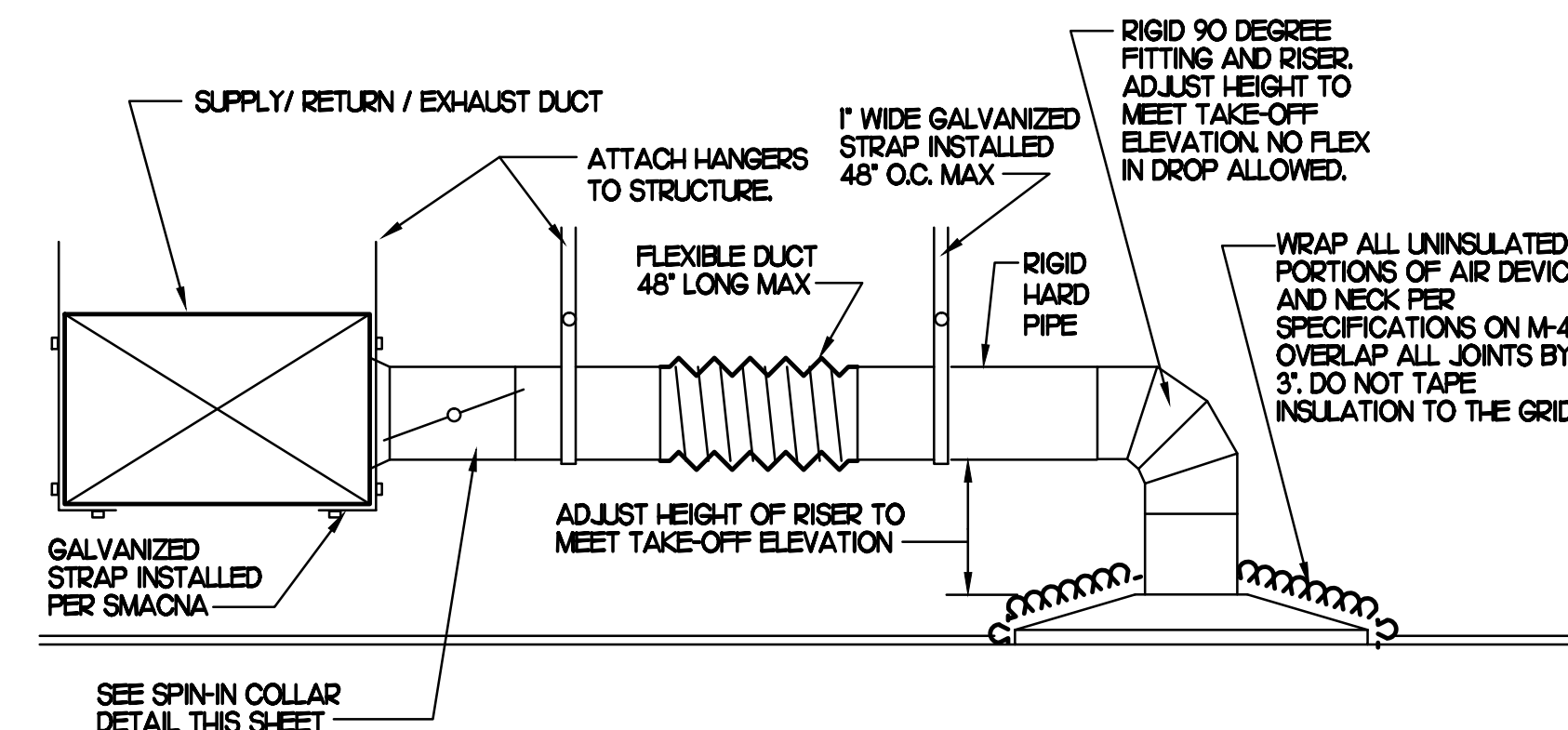
- LENNOX EQUIPMENT - CONTACT LENNOX NATIONAL ACCOUNTS AT 972-497-6260 (OR BY FAX AT 972-497-5112) FOR PRICING, ORDERING AND AVAILABILITY. LENNOX EQUIPMENT NOT PURCHASED THRU LENNOX NATIONAL ACCOUNTS WILL NOT BE ACCEPTED.
- PRICE AIR DEVICES - THE MECHANICAL CONTRACTOR IS REQUIRED TO PURCHASE THE AIR DEVICES DIRECTLY FROM TOM BARRROW COMPANY. CONTACT MR. SCOTT GEORGE AT 404-351-1010 FOR PRICING AND AVAILABILITY. AIR DEVICES NOT PURCHASED THRU TOM BARRROW COMPANY WILL NOT BE ACCEPTED.
- SUNCOAST ENVIRONMENTAL CONTROLS - THE CFA 500 PANEL AND THE TEST/RESET STATIONS WILL BE PURCHASED AND PROVIDED BY THE ELECTRICAL CONTRACTOR AS A PART OF A NATIONAL ACCOUNT PACKAGE. SEE PART II PARAGRAPH 3A, 3D, AND 3E OF THE MECHANICAL SPECIFICATIONS FOR MORE INFORMATION.
- IER-AIR START COLLARS - THE MECHANICAL CONTRACTOR IS REQUIRED TO PURCHASE THE START COLLARS DIRECTLY FROM TOM BARRROW COMPANY. CONTACT MR. SCOTT GEORGE AT 404-351-1010 FOR PRICING AND AVAILABILITY. START COLLARS NOT PURCHASED THRU TOM BARRROW COMPANY WILL NOT BE ACCEPTED.

AIR DEVICE SCHEDULE

MARK	DESCRIPTION	LOCATION	NECK SIZE	FACE SIZE	FRAME TYPE	REMARKS
A	PRICE MODEL APD5P ALUMINUM SUPPLY AIR DIFFUSER WITH AIR PATTERN CONTROLLER.	DINING AREA KITCHEN	SEE PLAN	24X24	LAY-IN	I2
B	PRICE MODEL APD5P ALUMINUM SUPPLY AIR DIFFUSER WITH AIR PATTERN CONTROLLER REMOVED.	KITCHEN	SEE PLAN	24X24	LAY-IN	I2
F	PRICE MODEL 80 EGGCRATE RETURN AIR GRILLE WITH REMOVABLE WHITE CORE FACTORY FLAT BLACK BACKPAN AND ROUND NECK.	DINING/OFFICE KITCHEN PLAYGROUND	SEE PLAN	24X24	LAY-IN	I2
H	PRICE MODEL APD5P ALUMINUM SUPPLY AIR DIFFUSER WITH AIR PATTERN CONTROLLER.	OFFICE	10	24X24	LAY-IN	I23
NOTES	MECHANICAL CONTRACTOR SHALL PURCHASE THE AIR DEVICES DIRECTLY FROM TOM BARRROW COMPANY. CONTACT MR. SCOTT GEORGE AT 404-351-1010 FOR PRICING AND AVAILABILITY. AIR DEVICES NOT PURCHASED THRU TOM BARRROW COMPANY WILL NOT BE ACCEPTED.					
REMARKS	1. STANDARD OFF WHITE FINISH. 2. FACTORY INSULATED R-6 BACKPAN. 3. PROVIDE VCR7 NECK DAMPER, ADJUSTABLE THRU DIFFUSER FACE.					

GAS FIRED ROOFTOP UNIT SCHEDULE

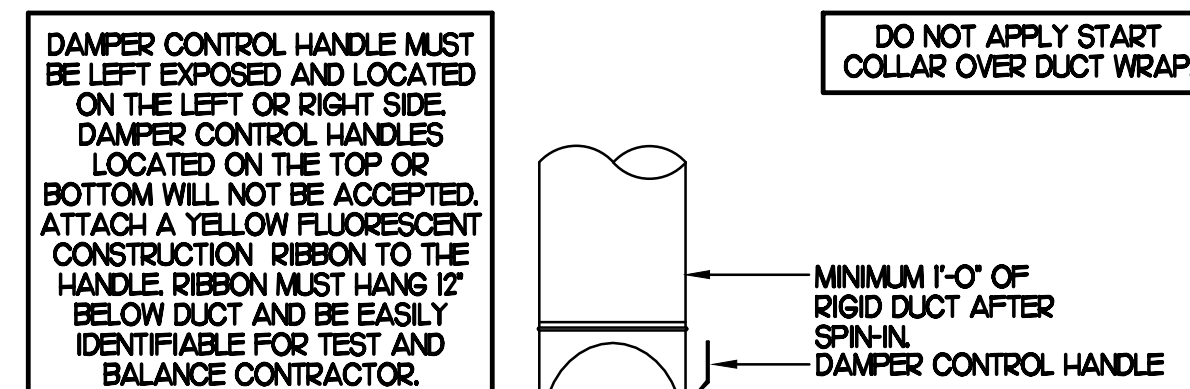
MARK	COOLING CAPACITY (MBH)		HEATING CAPACITY (MBH)		FAN SECTION (CFM)			EFFICIENCY	MODEL	MANUFACTURER	REMARKS
	TOTAL	SENS	INPUT	OUTPUT	SUPPLY	O.A.	HP				
AC#1 (EXISTING)	-	-	-	-	4,400	1,000	-	-	EXISTING UNIT	LENNOX	I4
AC#2 (NEW)	101.7	74.2	240.0	192.0	3,000	700	3.0	I2	LGH02#4	LENNOX	I2,4,5,6,7,8,9,10,13,15
AC#3 (NEW)	105.2	83.1	240.0	192.0	3,750	500	3.0	I2	LGH02#4	LENNOX	I2,4,5,6,7,8,9,10,13,15
AC#4 (NEW)	93.0	67.9	240.0	192.0	2,895	605	3.0	I2	LGH02#4	LENNOX	I2,4,5,6,7,8,9,10,13,15
AC#5 (NEW)	63.2	46.8	150.0	120.0	2,000	300	1.0	I2	LGH06#4	LENNOX	I3,4,5,6,7,8,9,11,15
NOTES	<ul style="list-style-type: none"> COOLING CAPACITIES ARE GROSS, BASED ON INDOOR EDB 80F, INDOOR EWB 67F, OUTDOOR EDB 95F. FOR PROPER BUILDING AIR BALANCE, VERIFY AMOUNT OF OUTSIDE AIR PROVIDED BY ALL EXISTING UNITS. ADJUST AS PER SCHEDULE IF NECESSARY. VERIFY MIN. 10' DISTANCE OF O.A. INTAKE OPENINGS OF A/C UNITS FROM ANY EXISTING SOURCE OF AIR POLLUTION (EXHAUST FAN, COMBUSTION FLUE, VENT ETC). IF SUCH CONDITIONS EXIST, CONTRACTOR IS REQUIRED TO DUCT OUTSIDE AIR INTAKE ON ROOF AWAY FROM ANY SUCH SOURCE. 										
REMARKS	<ol style="list-style-type: none"> PROVIDE FACTORY ROOF CURB ADAPTER. PROVIDE DIFFERENTIAL ENTHALPY ECONOMIZER WITH POWER EXHAUST. PROVIDE 0-100% MOTORIZED OUTSIDE AIR DAMPER ASSEMBLY. PROVIDE FACTORY INSTALLED 115V GFI CONVENIENCE OUTLET. PROVIDE FACTORY INSTALLED RETURN SIDE SMOKE DETECTOR. PROVIDE FACTORY INSTALLED NON-FUSED DISCONNECT. PROVIDE 2" MERV 8 THROW AWAY FILTERS. PROVIDE HINGED PANELS FOR FILTER ACCESS, FAN MOTOR ACCESS, COMPRESSOR ACCESS AND CONTROL COMPARTMENT ACCESS. PROVIDE FACTORY LOUVERED COIL HAIL GUARD. PROVIDE HUMIDITROL OPTION WITH FACTORY WALL MOUNTED HUMIDITY SENSOR. FOR CURB ADAPTER MANUFACTURER EXISTING CURB IS FOR CARRIER MODEL #48H-1006 ROOFTOP UNIT. FIELD VERIFY. FOR CURB ADAPTER MANUFACTURER EXISTING CURB IS FOR CARRIER MODEL #48H-1008 ROOFTOP UNIT. FIELD VERIFY. FOR CURB ADAPTER MANUFACTURER EXISTING CURB IS FOR CARRIER MODEL #48H-1009 ROOFTOP UNIT. FIELD VERIFY. PERFORM ROUTINE MAINTENANCE ON EXISTING ROOFTOP UNIT AND MAKE ANY NECESSARY REPAIRS. VERIFY UNIT IS FULLY CHARGED ON REFRIGERANT WITH NO LEAKS. REGLAZE ANY BELTS/FAN MOTORS NECESSARY. PROVIDE FACTORY INSTALLED DRAIN PAN OVERFLOW SWITCH. 										



1 SAG/RAG/GRILLE TAKE-OFF

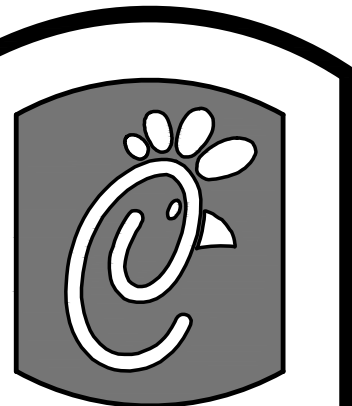
NO SCALE

CHICK-FIL-A HAS A NATIONAL ACCOUNT WITH TOM BARRROW COMPANY FOR THE IER-AIR START COLLARS. THE MECHANICAL CONTRACTOR IS REQUIRED TO PURCHASE THE IER-AIR START COLLARS DIRECTLY FROM TOM BARRROW COMPANY. CONTACT MR. SCOTT GEORGE AT 404-351-1010 FOR PRICING AND AVAILABILITY. IER-AIR START COLLARS NOT PURCHASED THRU TOM BARRROW COMPANY WILL NOT BE ACCEPTED.



2 START COLLAR

NO SCALE



Chick-fil-A

5200 Buffington Rd.
Atlanta Georgia,
30349-2998

Revisions:
Mark Date By
5/07/14

CODE COMMENTS
Mark Date By

Mark Date By

Mark Date By

Seal

Kurzynske & Associates
CONSULTING ENGINEERS
825 Third Avenue, South
Nashville, Tennessee 37210
Telephone: (615) 255-5203
Fax: (615) 255-5207
Email: mail@kurzynske.com

STORE
Albemarle Road
FSR # 0789
9010 Albemarle Rd.
Charlotte, NC
28227

SHEET TITLE
HVAC DETAILS,
SCHEDULES, &
SPECIFICATIONS

DWG EDITION 00-0
REVISION 00

Job No. : 13-526

Store : #0789

Date : 04.25.14

Drawn By : BM

Checked By : MK

Sheet

M2.1