

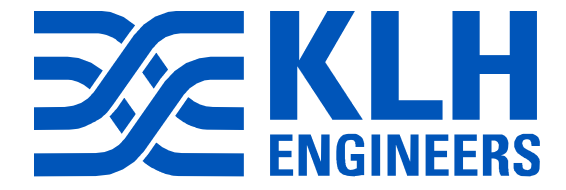
DRAWN BY: CES CHECKED BY: KVS

10/2024 4:30:32 PM C:\Users\cesha\Documents\2025\10.21\MEP-Medpace B100-Gym Renovation.dwg

KEYED NOTES	
H6	INSTALL NEW AIR DEVICE IN NEAR CEILING. CONNECT NEW AIR DEVICE TO EXISTING DUCTWORK
H8	SEE ARCHITECTURAL DRAWINGS FOR LOUVER LOCATION COORDINATION



ARCHITECT & INTERIOR DESIGN
 ARCX STUDIO
 FIRM 18314912
 1616 WINE STREET, CINCINNATI, OH 45202
 513.832.1302



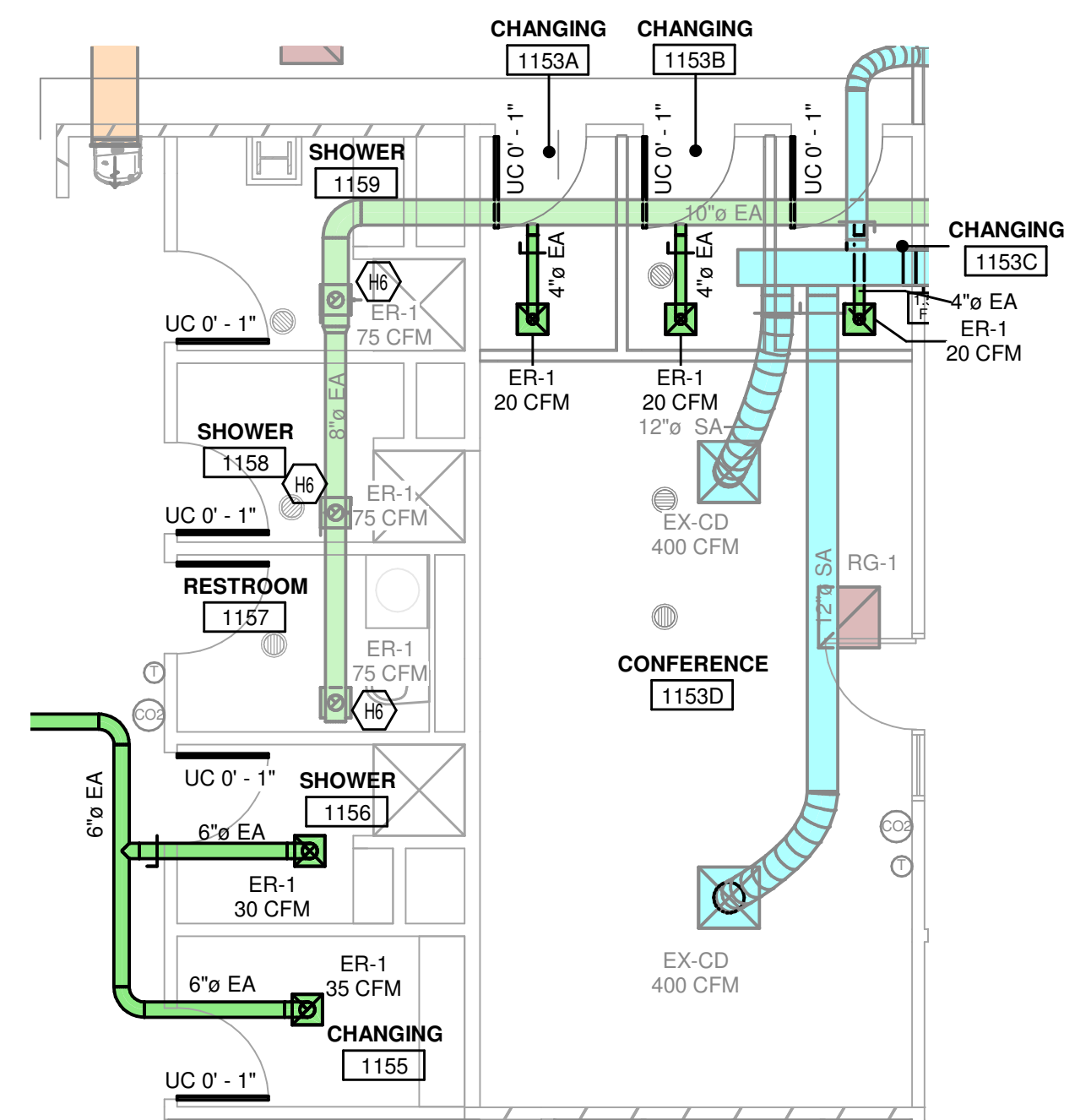
ENGINEER
 KOHRS LONNEMANN HEIL ENGINEERS, INC.
 1538 ALEXANDRIA PIKE, SUITE 11
 FT. THOMAS, KY 41075
 859.442.8050

MEDPACE B100 L1 GYM RENOVATION

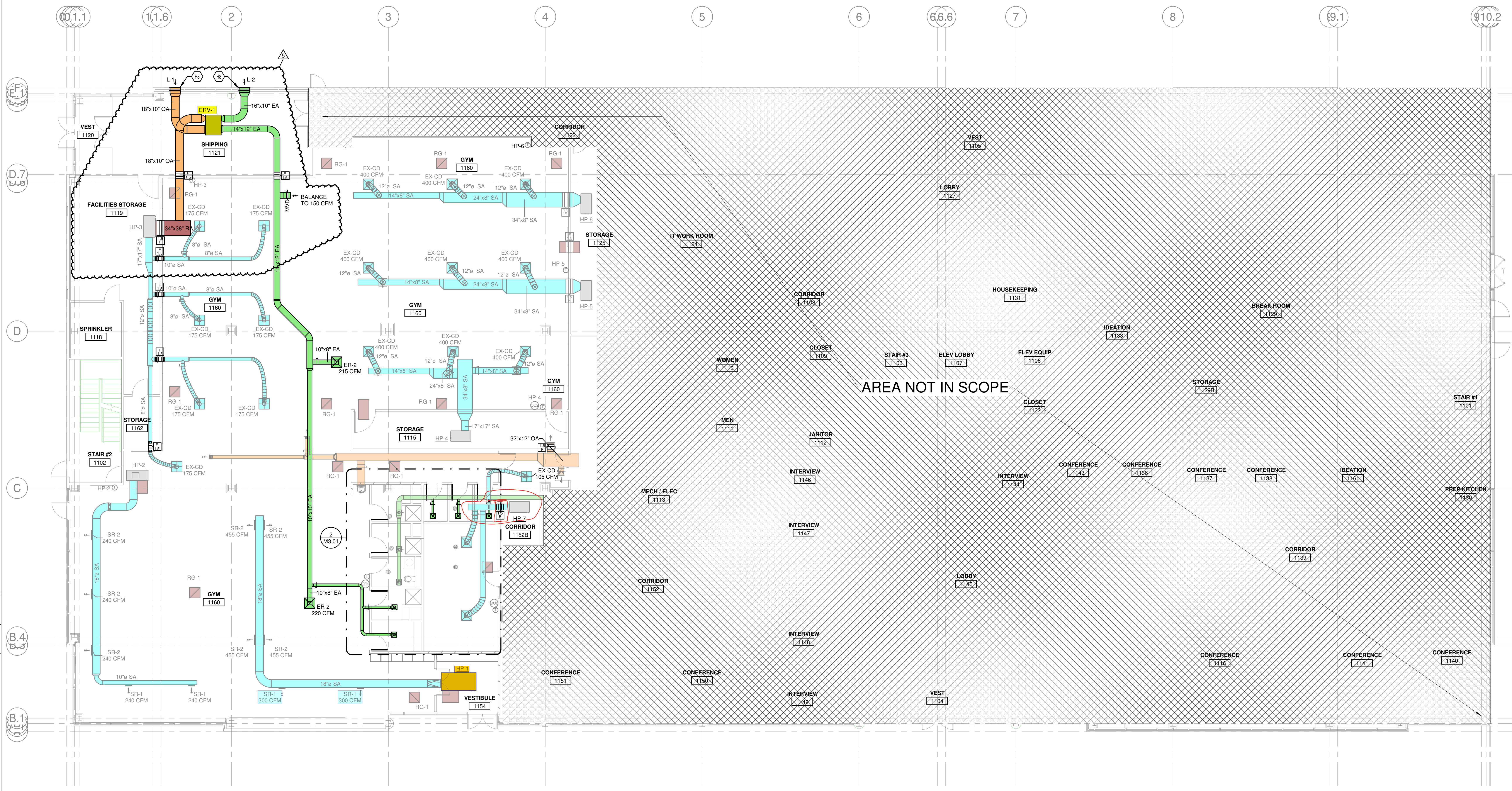
5375 MEDPACE WAY
 CINCINNATI, OH 45227

ARCX STUDIO PROJECT NUMBER
 2315

OWNER
 MEDPACE, INC.



2 MECHANICAL PLAN - ENLARGED VIEW
 3/16" = 1'-0"



1 MECHANICAL PLAN - LEVEL 1
 1/8" = 1'-0"

AREA NOT IN SCOPE

REVISION	DESCRIPTION	DATE
1	BID & PERMIT	09-23-2023
3	BULLETIN 2	02-23-2024
5	BULLETIN 5	10-09-2024

ISSUED FOR
BULLETIN 2
02-23-2024
 SHEET NAME
MECHANICAL DUCTWORK LEVEL 1 OVERALL

M3.01