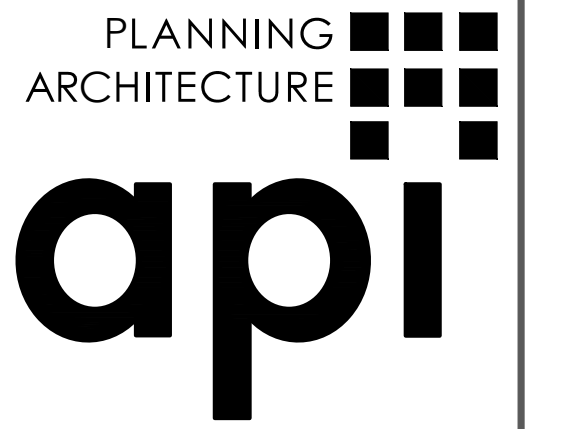


REVISIONS
 △ BUILDING DEPT. - 04/28/22
 △ FIRE DEPT. - 04/16/22
 △ HEALTH DEPT. - 05/16/22
 △ BUILDING DEPT. - 07/18/22

MECHANICAL ROOF PLAN NOTES

1. INSTALL MAU- PER DETAIL 2/M0.1.
2. INSTALL KHF- PER DETAIL 1/M0.1.
3. INSTALL RTU- PER DETAIL 11/M0.
4. INSTALL REF- PER DETAIL 9/M0.
5. INSTALL RCU- PER DETAIL 10/M0.
6. KEEP ALL EA TERMINATIONS, PLUMBING VENTS, FLUES, ETC. 10'-0" MIN. AWAY FROM ALL DSA INTAKES.
7. REFRIGERANT LINES SIZED PER MANUFACTURERS RECOMMENDATIONS AND 3/4" CONDUIT FROM RCU-L2,3 THRU ROOF PER DETAIL 8/M0 TO REF-L2,3A,3B.
8. 4" COMB AIR INTAKE AND 4" FLUE FROM IWH- BELOW - SEE PLUMBING DRAWINGS FOR FLUE AND COMBUSTION AIR INSTALLED BY PLUMBER.

THIS DOCUMENT, AND THE IDEAS AND DESIGNS INCORPORATED HEREIN, AS AN INSTRUMENT OF PROFESSIONAL SERVICE, IS THE PROPERTY OF "api" AND IS NOT TO BE USED, IN WHOLE OR IN PART, FOR ANY OTHER PROJECT WITHOUT WRITTEN AUTHORIZATION.



ARCHITECTURE PLUS INC.
 4335-B NORTH STAR WAY
 MODESTO, CA 95356

ph. 209.577.4661
 fx. 209.577.0213

www.apirc.com

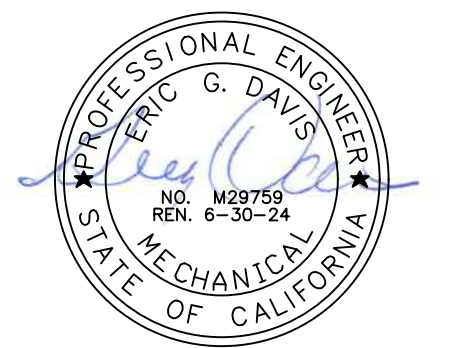
JOSEPH L. SMITH
 RODNEY C. ALONSO
 ARCHITECTS

CA

BRASS TAP PUB
 SW CORNER, GENERAL STILLWELL DR. & 11TH AVE.
 MARINA

MECHANICAL ROOF PLAN

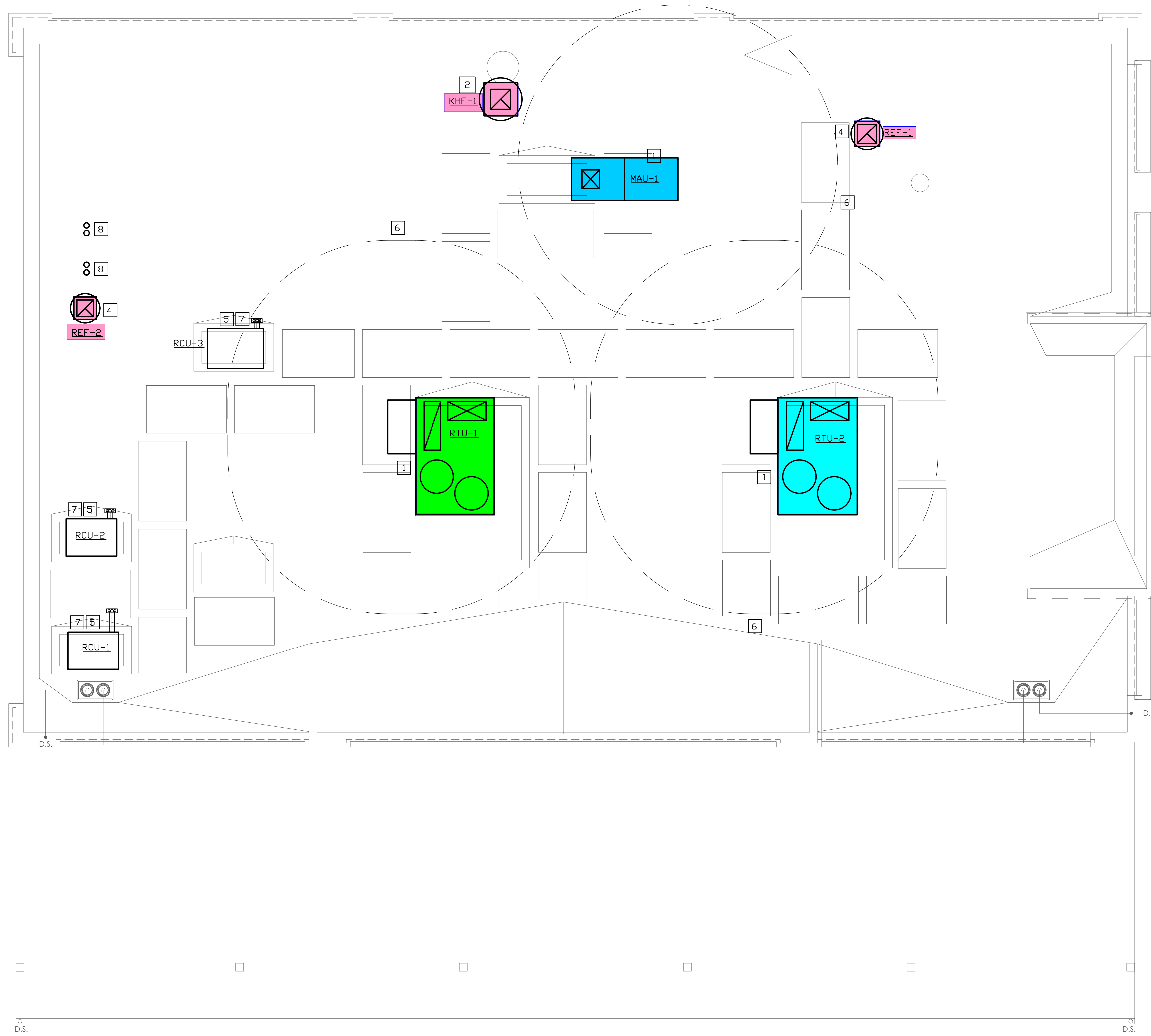
Reviewed for Code Compliance
 08/23/2022
 CSG CONSULTANTS, INC.



DATE : JULY 2022
 JOB NO. : 21062
 DRAWN : NR/GD
 CHECKED : GD
 SHEET :

GDM ENGINEERING, INC
 Mechanical and Safety Engineers
 212 W Pine St, Ste 4
 Lodi, Ca 95242
 Ph 209-367-0899
 Fax 209-367-0898
 E-mail:gdmengrinc@sbcglobal.net

M2



1 MECHANICAL ROOF PLAN
 SCALE: 1/4" = 1'-0"

