

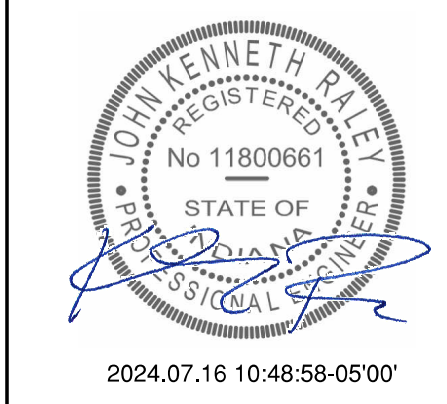
STIPULATION FOR REUSE
THIS DRAWING WAS PREPARED FOR THE PROJECT AND IS NOT TO BE REUSED FOR ANY OTHER PROJECT WITHOUT THE WRITTEN CONSENT OF HFA-AE, LTD. THE USER OF THIS DRAWING FOR ANY OTHER PROJECT SHALL BE RESPONSIBLE FOR OBTAINING THE NECESSARY PERMISSIONS FROM THE ORIGINAL DESIGNER AND ENGINEER. HFA-AE, LTD. SHALL NOT BE RESPONSIBLE FOR ANY REUSE OF THIS DRAWING FOR ANY OTHER PROJECT.

WAWA
STOCK NUMBER: 7408
INDIANAPOLIS, IN 46240
JOB NUMBER: 42-2345102

ISSUE BLOCK

1	REV 1	03/11/24
2	REV 2	07/16/24

CHECKED BY: MJS
DRAWN BY: SGB
DOCUMENT DATE: 07/16/24
PROTO: U59FB-L
PROTO CYCLE: 2023.04.G5
PLAN ISSUE: CNST SET

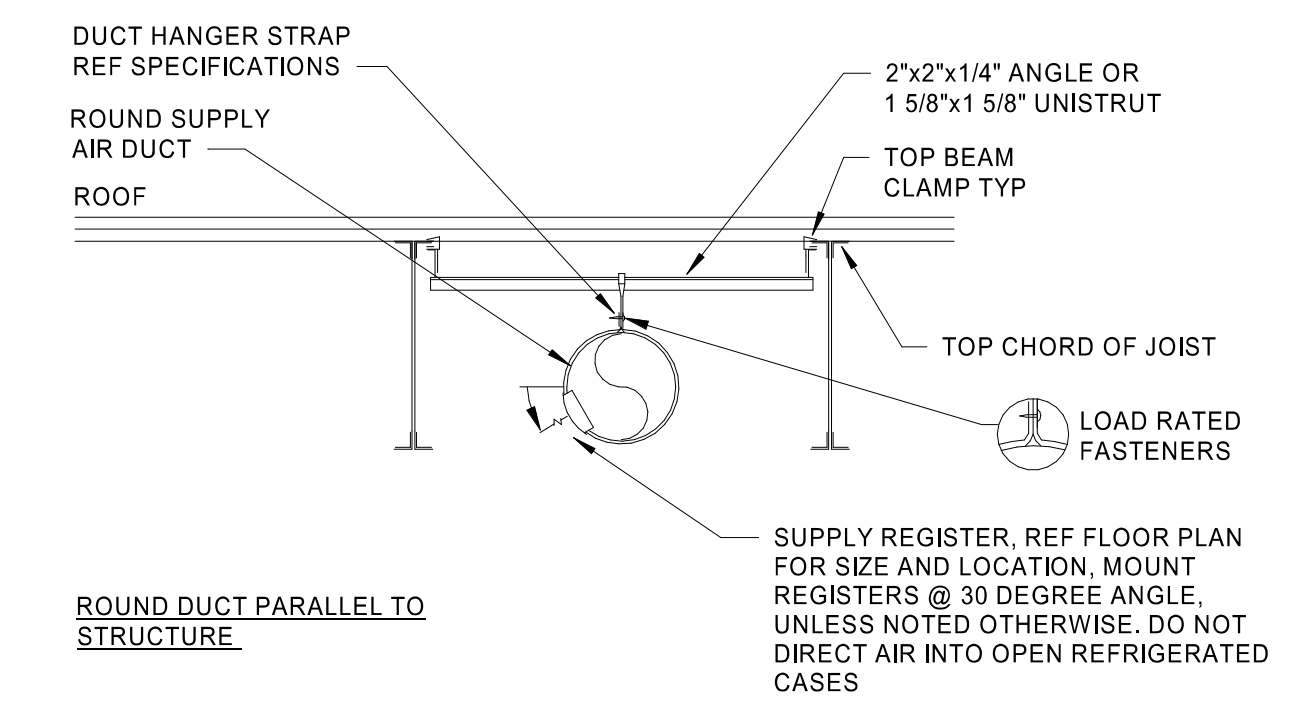


HVAC FLOOR PLAN

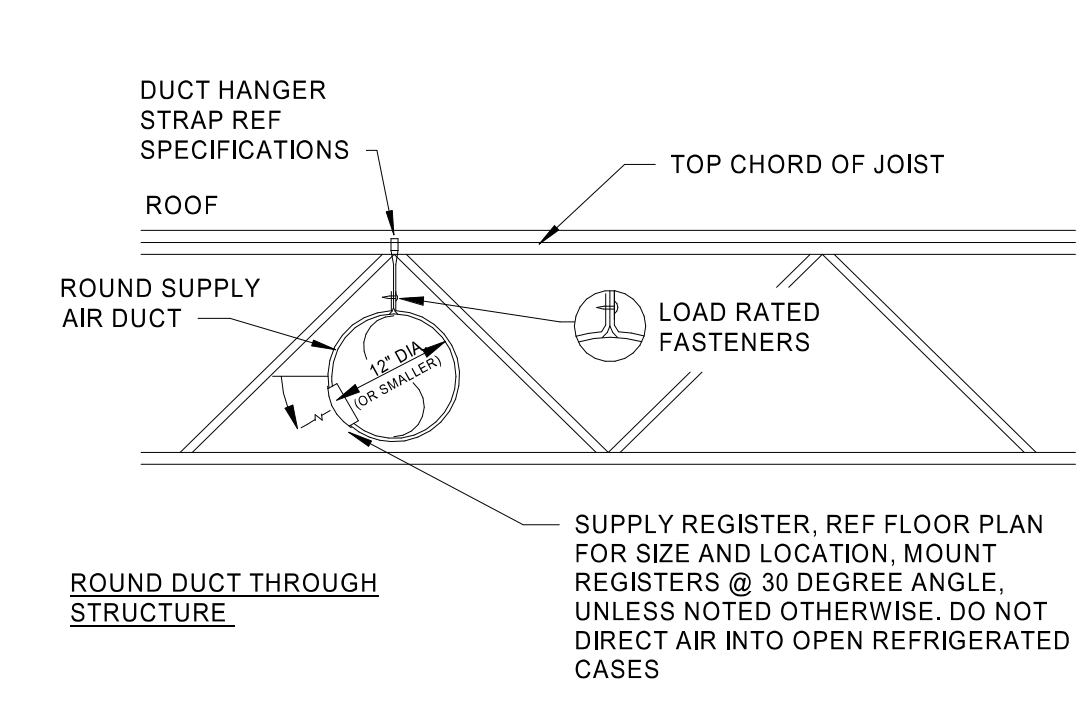
SHEET: M1.0

KEYNOTES

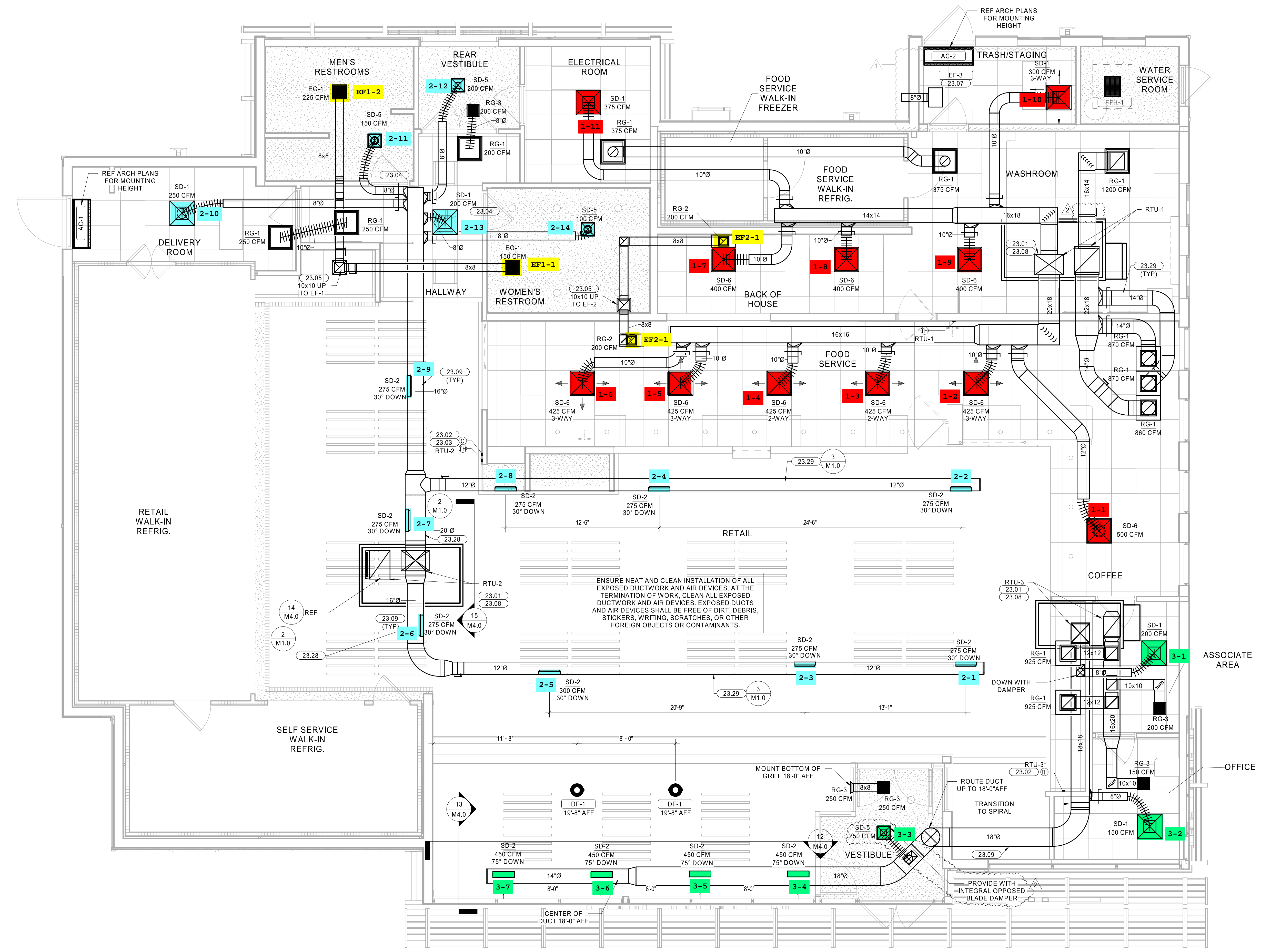
- # NOTE
- SUPPLY AND RETURN DUCT UP TO RTU ON ROOF. TRANSITION AS REQUIRED. FIELD VERIFY DUCT ROUTING PRIOR TO FABRICATION. PROVIDE FLEX CONNECTION FOR VIBRATION ISOLATION.
 - MOUNT REMOTE TEMPERATURE/HUMIDITY SENSOR IN AREA SHOWN AT 66" AFF. COORDINATE EXACT LOCATION WITH TENANT CONSTRUCTION MANAGER. THE ENTIRE CONTROL SYSTEM SHALL BE PROVIDED COMPLETE IN EVERY RESPECT BY THE MECHANICAL CONTRACTOR.
 - WALL MOUNTED CO2 SENSOR TO RTU-2. SENSOR TO MONITOR CO2 LEVELS THROUGH REMOTE BAS. SENSOR BY WAWA BAS VENDOR.
 - UNDERCUT DOOR 1" FOR AIR PASSAGE.
 - EXHAUST DUCT ROUTED TO FAN ON ROOF. COORDINATE ROUTING OF DUCT WITH ALL DISCIPLINES. PROVIDE TRANSITIONS AND FITTINGS AS REQUIRED.
 - PROVIDE A CABINET STYLE EXHAUST FAN. EXHAUST DUCT SHALL BE GALVANIZED STEEL. PROVIDE SIDEWALL VENT WITH SCREEN AND FLAPPER DAMPER. CROWN MODEL 340 OR EQUAL. EXHAUST FAN SHALL MAINTAIN 10" CLEARANCE FOR ANY OUTSIDE AIR INTAKE. MUST MEET LOCAL CODE REQUIREMENTS. FIELD VERIFY ALL ROUTING AND REQUIREMENTS PRIOR TO BID. SEAL ALL PENETRATION WEATHER TIGHT. PRE-PAINT VENT COVER TO MATCH SIDING.
 - HVAC UNIT MANUFACTURER TO PROVIDE 120V SMOKE DETECTORS FOR SUPPLY AND RETURN WITH AUXILIARY CONTACTS AS SHOWN. UPON ACTIVATION, THE SMOKE DETECTORS SHALL SHUT DOWN THE AIR DISTRIBUTION SYSTEM TO WHICH IT IS CONNECTED AND ACTIVATE A VISIBLE AND AUDIBLE SUPERVISORY SIGNAL AT A CONSTANTLY ATTENDED LOCATION VIA THE SPRINKLER/FIRE ALARM PANEL. SMOKE DETECTORS SHALL ALSO BE FURNISHED WITH WALL MOUNTED REMOTE TEST STATION WITH KEYS TO RESET. REMOTE TEST STATION SUPERVISORY SIGNAL SHALL BE LED TYPE WITH AUDIBLE BEEPING ALERT.
 - PROVIDE MCGILL AIRFLOW'S DOUBLE-WALL INSULATED SPIRAL DUCT OR EQUAL (MCGILL 614/829-1200). REFERENCE DRAWINGS FOR MOUNTING HEIGHT. PROVIDE DUCT AND FITTINGS WITH SLIP JOINT CONNECTION TYPE. FLANGE-TO-FLANGE CONNECTION TYPES ARE NOT ALLOWED.
 - ROUTE DUCTWORK AS HIGH AS POSSIBLE PARALLEL TO STRUCTURE. REF 2-M1.0 TYP.
 - ROUTE DUCTWORK WITHIN THE JOIST SPACE. COORDINATE THRU WEBBING. REF 3-M1.0 TYP.



2 EXPOSED DUCT SUPPORT AND GRILLE
M1.0 NTS



3 EXPOSED DUCT SUPPORT AND GRILLE
M1.0 NTS

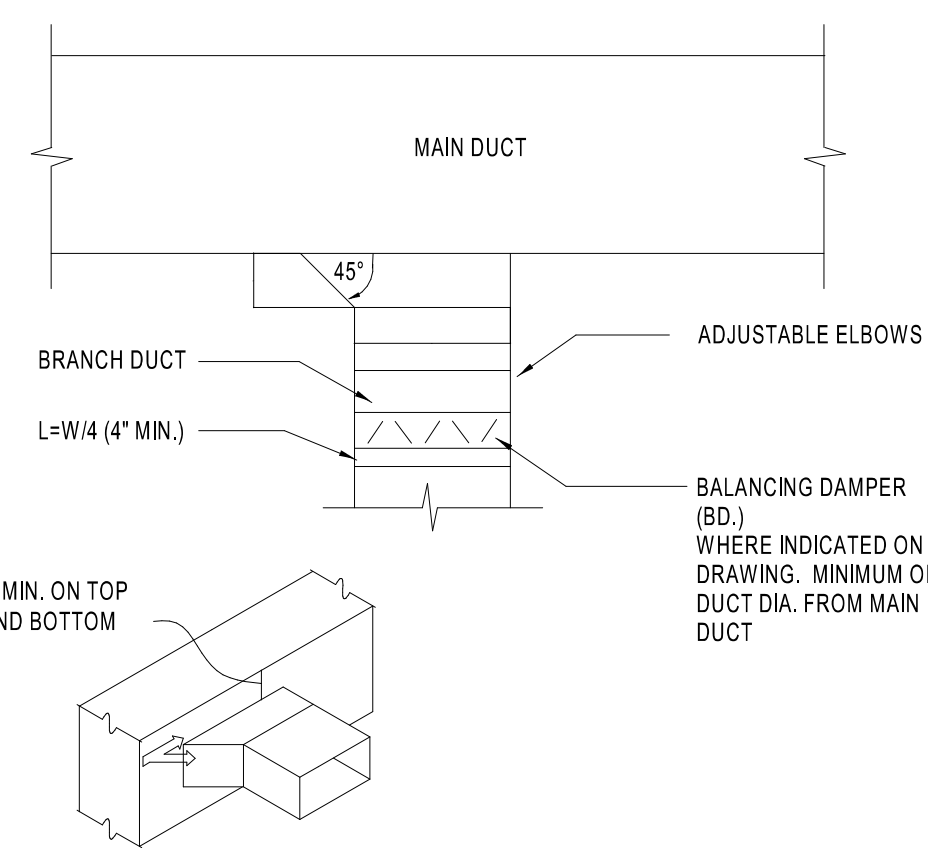


HVAC LEGEND

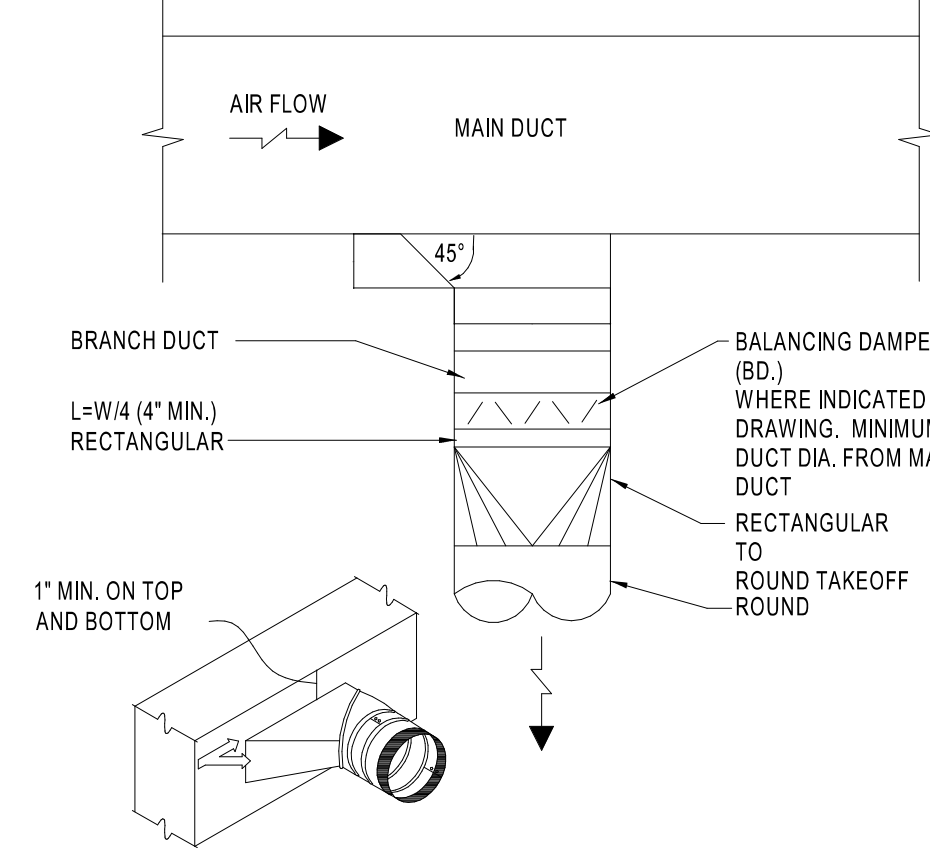
SYMBOL	DESCRIPTION
	NEW RECTANGULAR OR ROUND DUCT
	FLEXIBLE DUCT
	SUPPLY AIR DUCTWORK UP THROUGH PLAN
	RETURN AIR DUCTWORK UP THROUGH PLAN
	EXHAUST AIR DUCTWORK UP THROUGH PLAN
	90° ELBOW WITH TURNING VANES
	MANUAL AIR VOLUME CONTROL DAMPER
	4 WAY SUPPLY DIFFUSER
	3 WAY SUPPLY DIFFUSER
	2 WAY OPPOSED SUPPLY DIFFUSER
	2 WAY CORNER SUPPLY DIFFUSER
	RETURN AIR DEVICE
	EXHAUST AIR DEVICE
	AIR CURTAIN
	LINEAR SLOT DIFFUSER WITH PLENUM
	COMBINATION TEMPERATURE/HUMIDITY SENSOR
	TEMPERATURE SENSOR
	CO2 SENSOR
	TYPE MARK
	MECHANICAL EQUIPMENT TAG
	CONDENSATE PIPING
	ROOF MOUNTED EXHAUST FAN
	INLINE EXHAUST FAN
	PACKAGED ROOFTOP AIR CONDITIONER

1 HVAC FLOOR PLAN
1/4" = 1'-0"

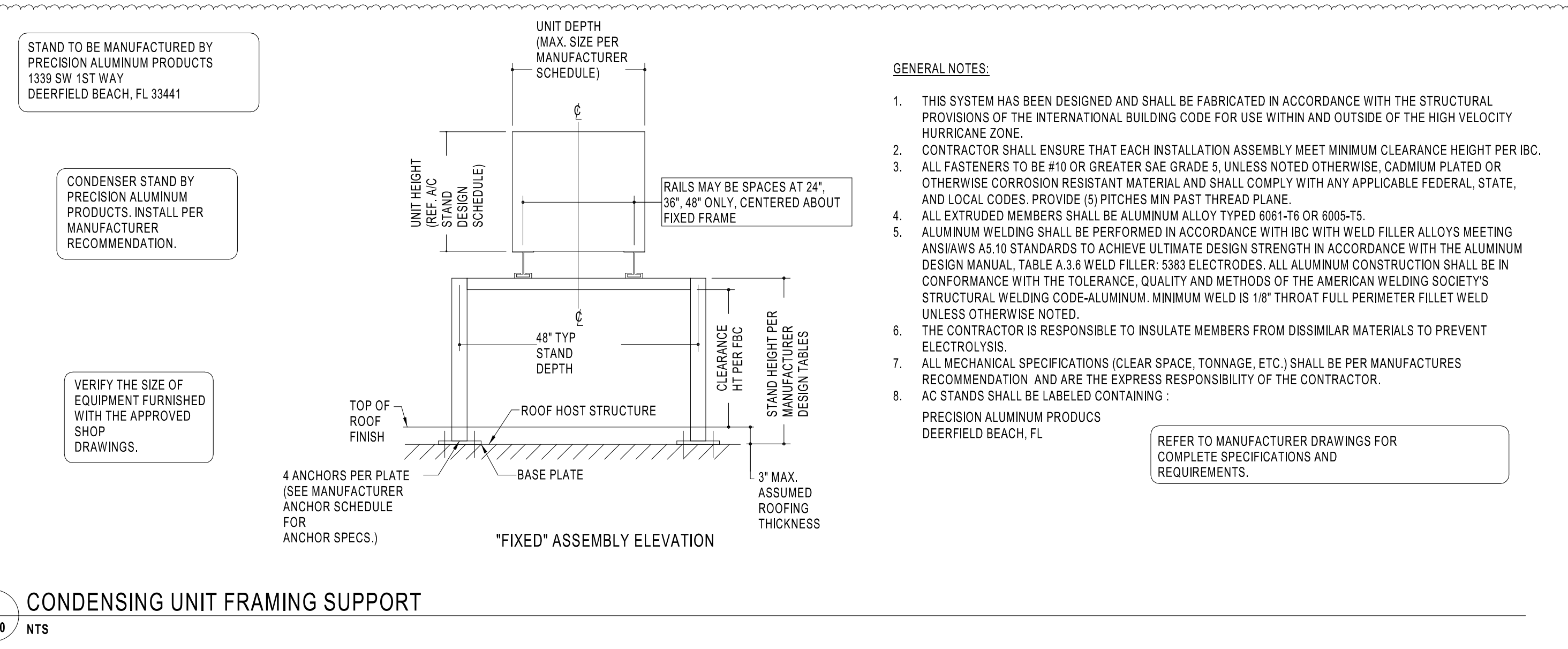
2024.07.16 10:48:58-0500
 C:\Users\jg\Documents\2024\Rev 1\HVAC FLOOR PLAN M1.0.dwg
 2024.07.16 10:48:58-0500
 2024.07.16 10:48:58-0500



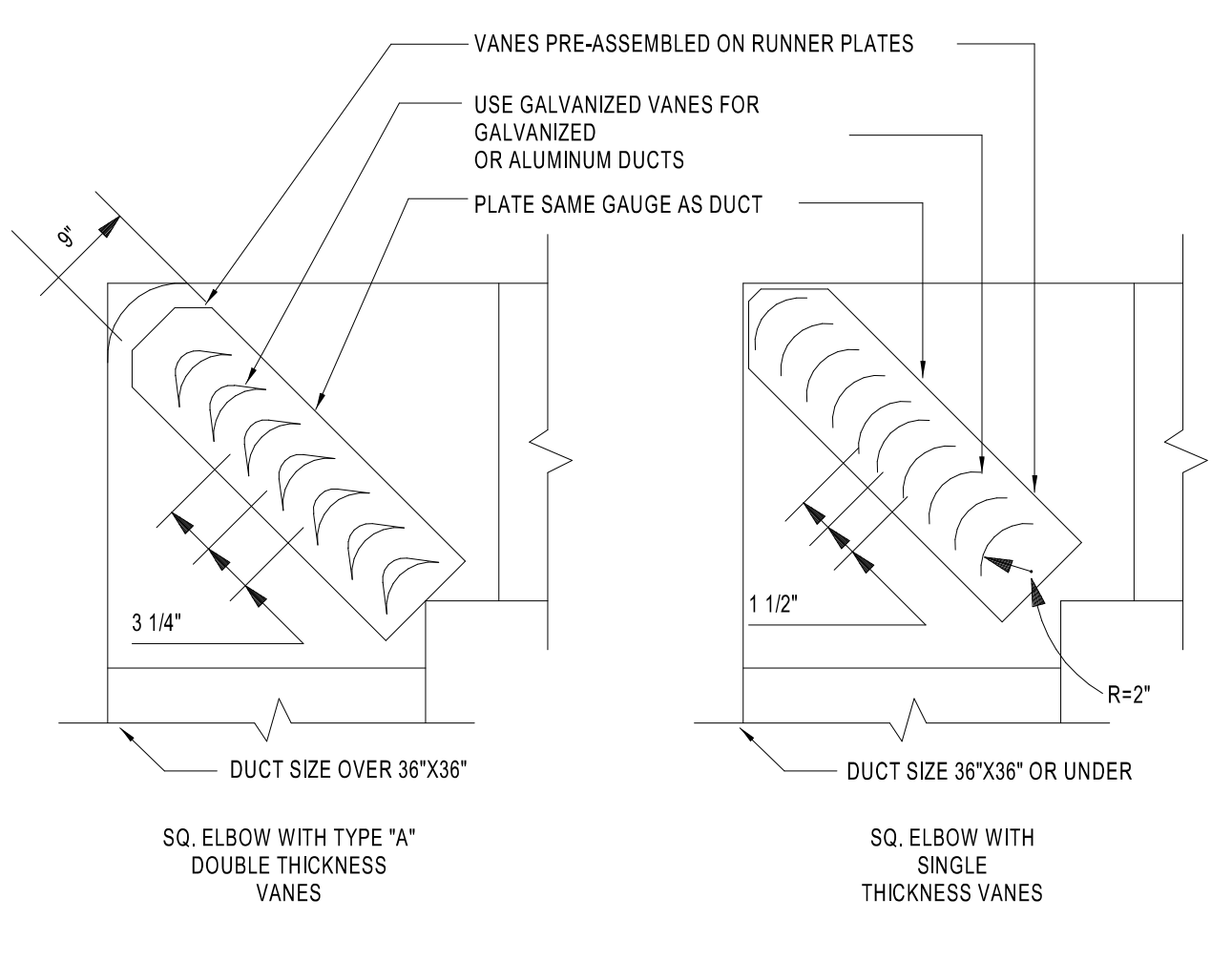
1 RECTANGULAR BRANCH CONNECTION
M4.0 NTS



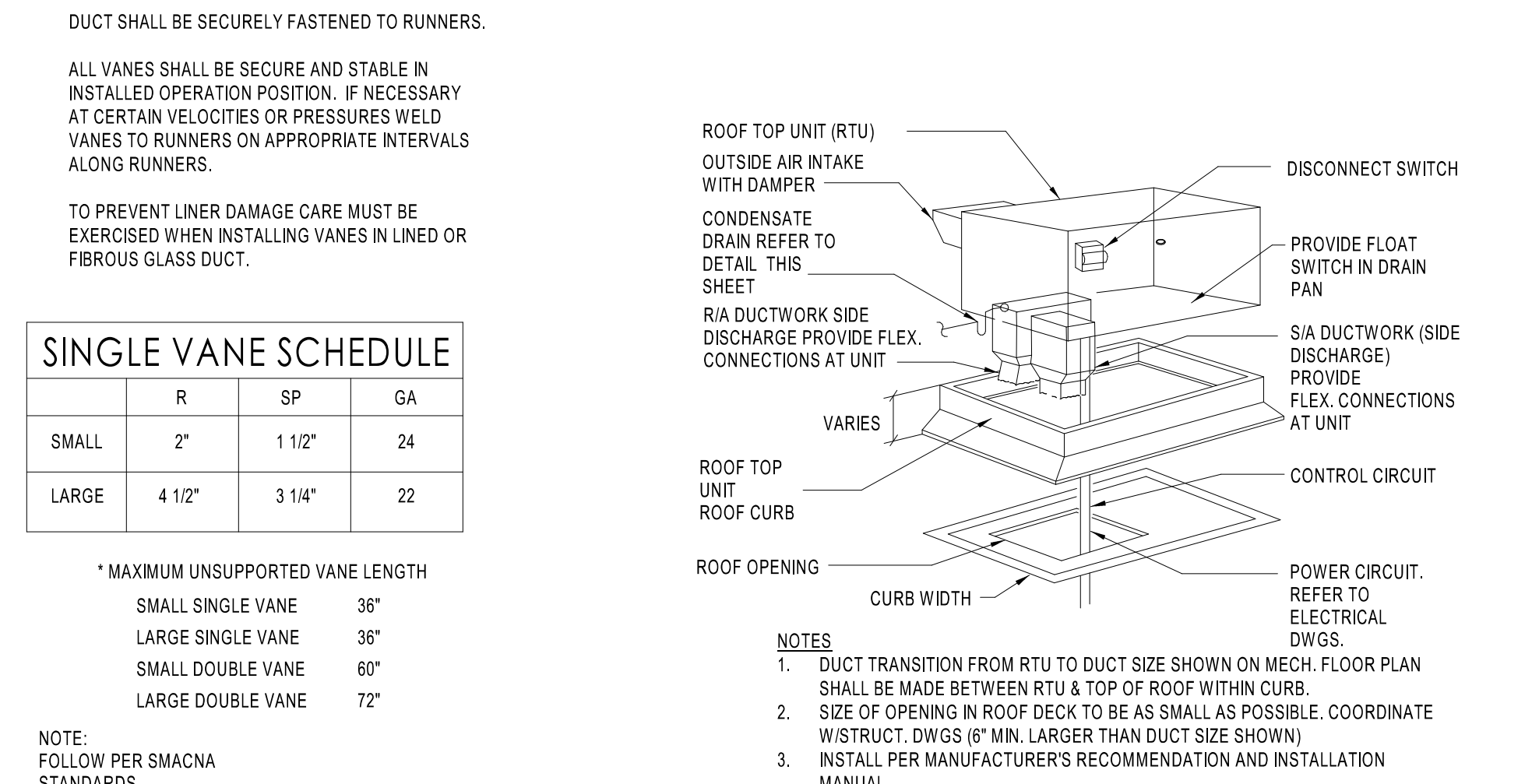
2 ROUND BRANCH CONNECTION
M4.0 NTS



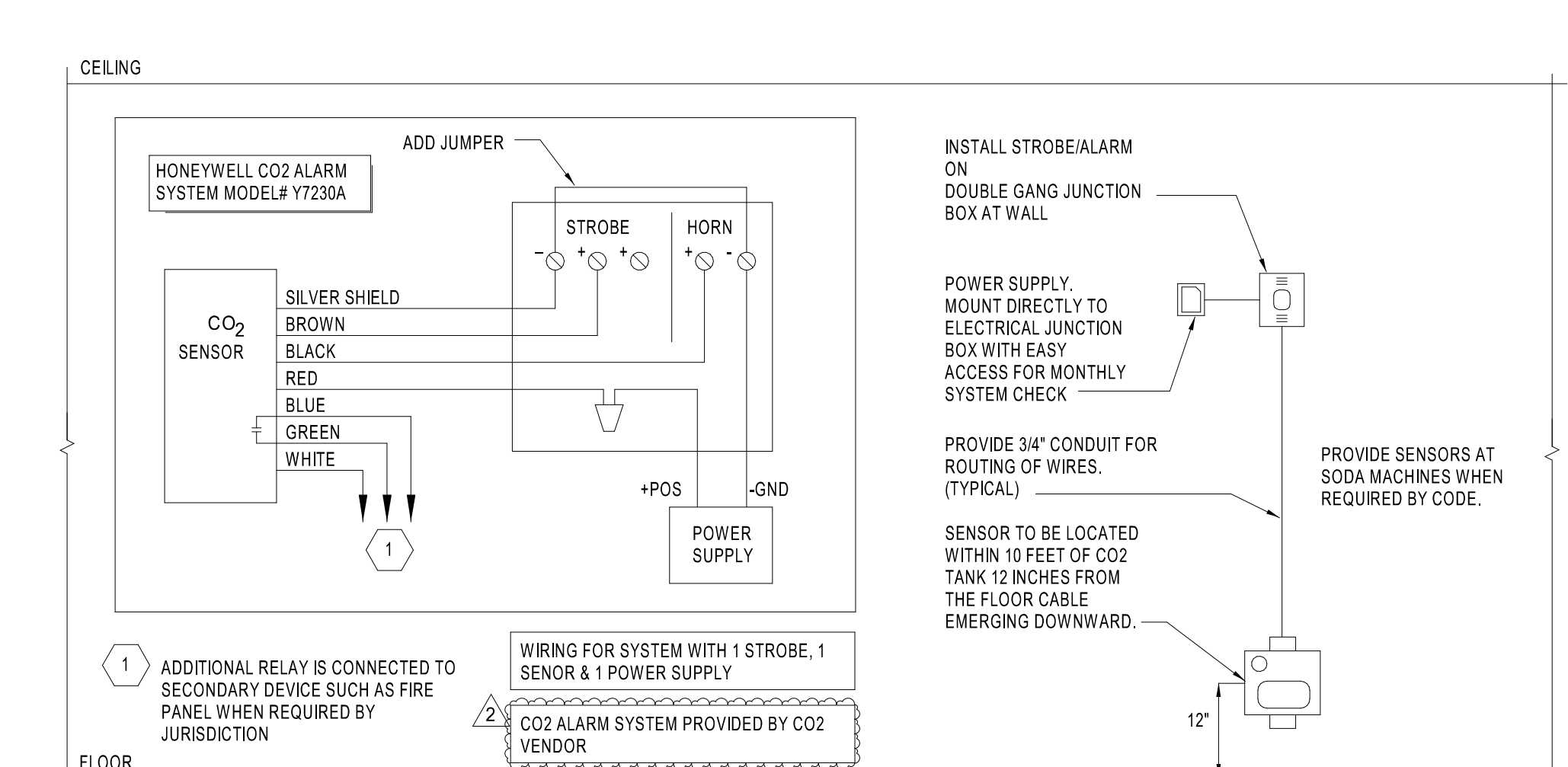
3 CONDENSING UNIT FRAMING SUPPORT
M4.0 NTS



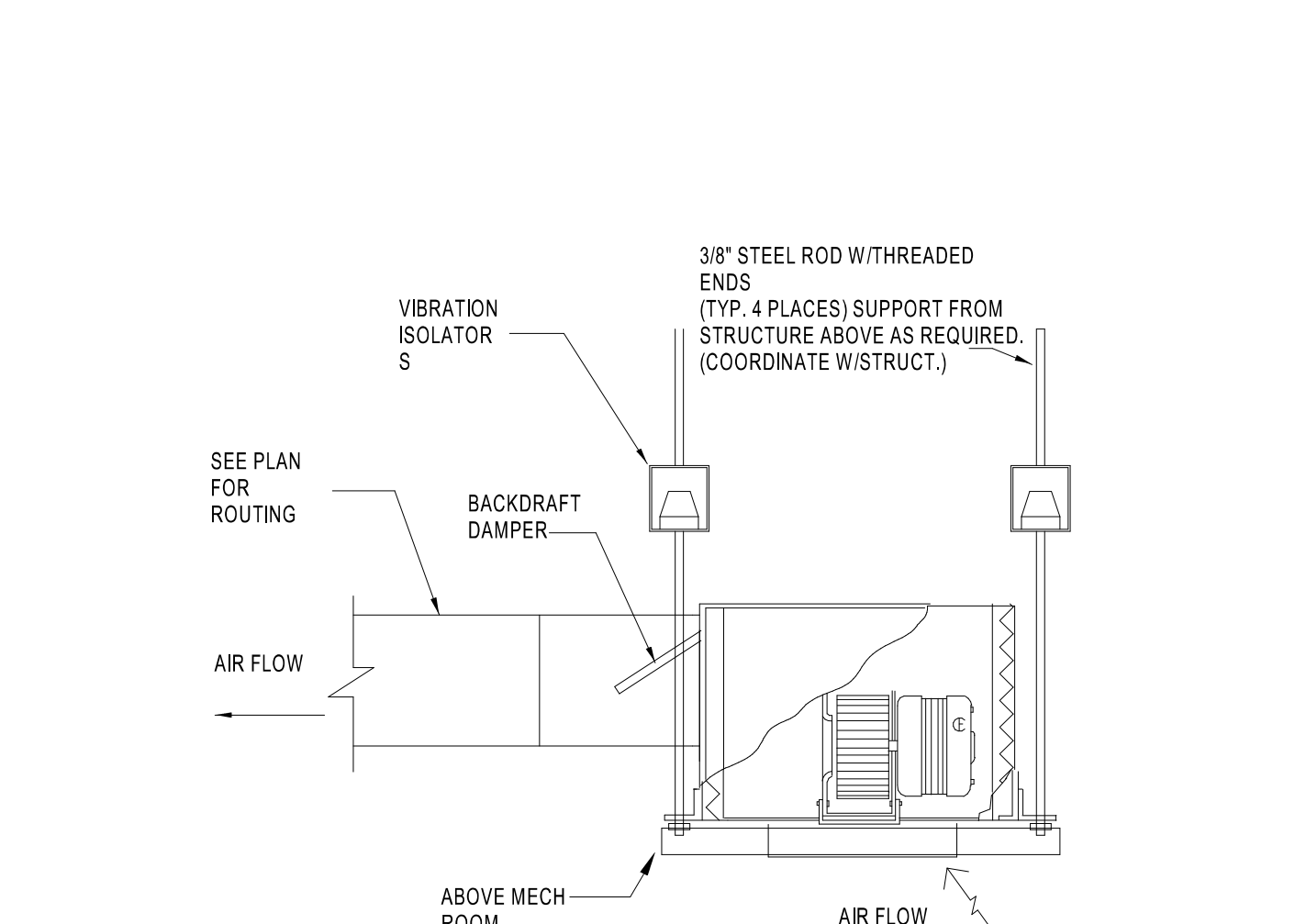
4 TURNING VANE DETAIL
M4.0 NTS



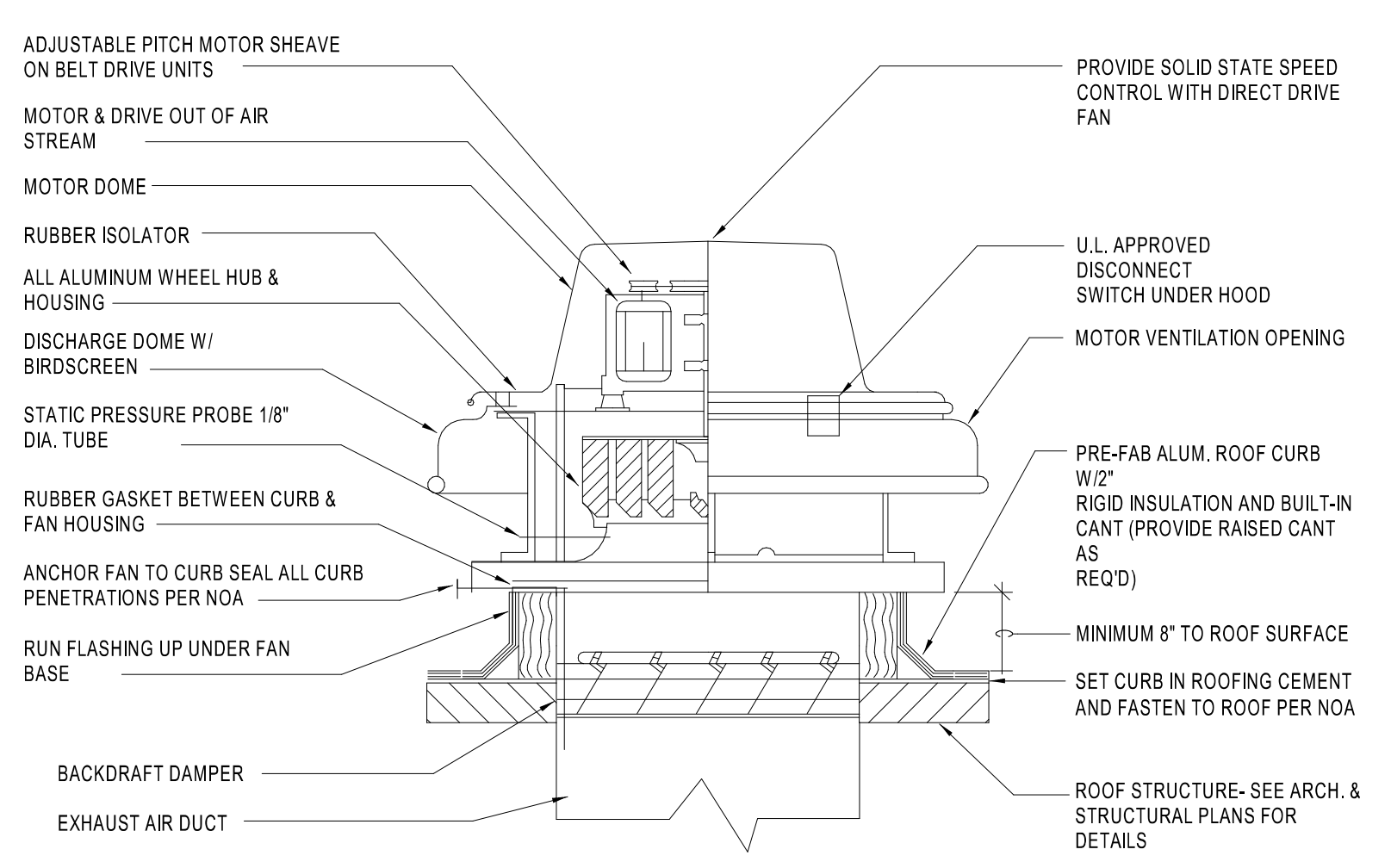
5 ROOF TOP UNIT MOUNTING DETAIL
M4.0 NTS



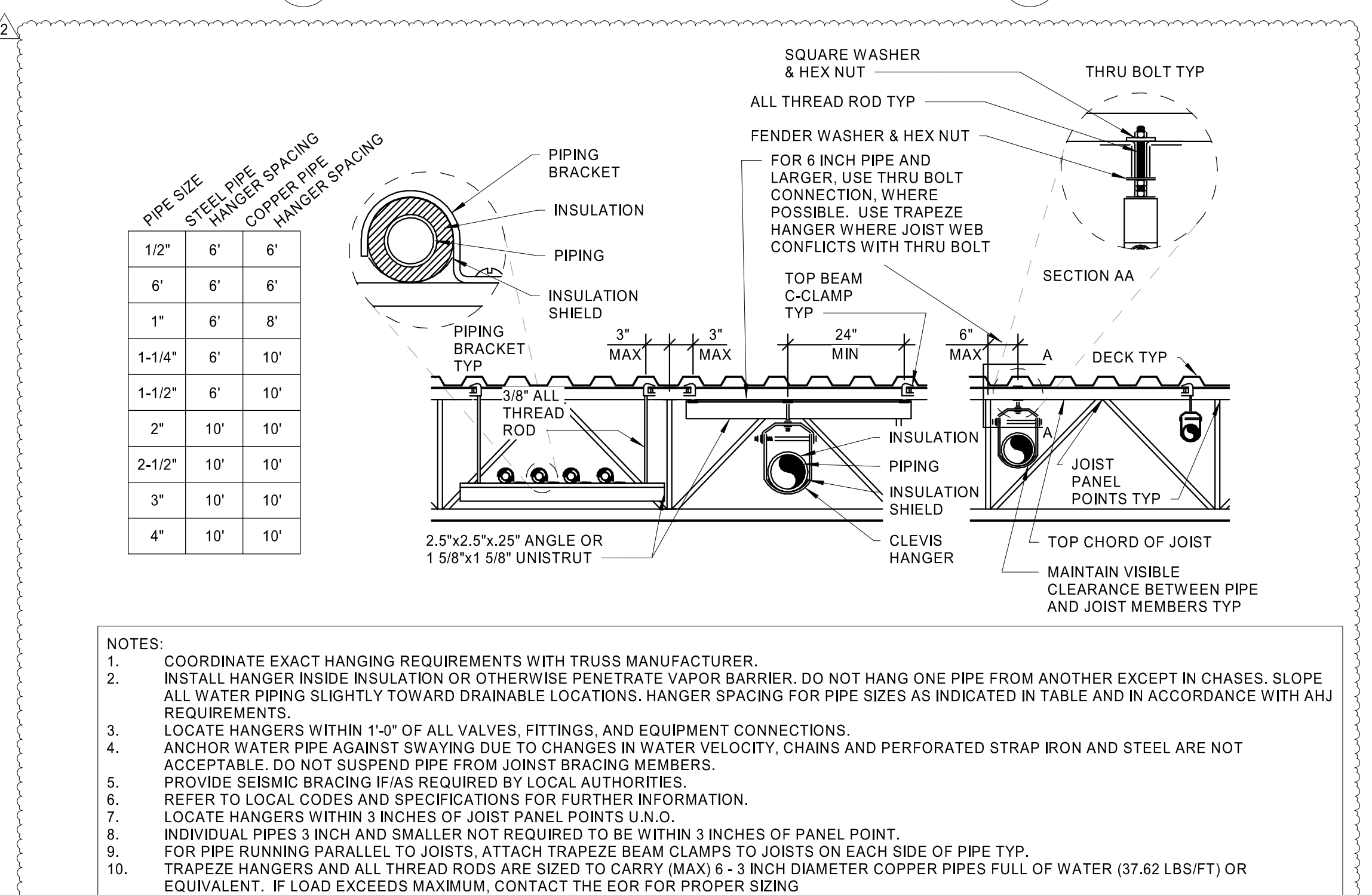
6 CO2 ALARM SYSTEM DETAIL
M4.0 NTS



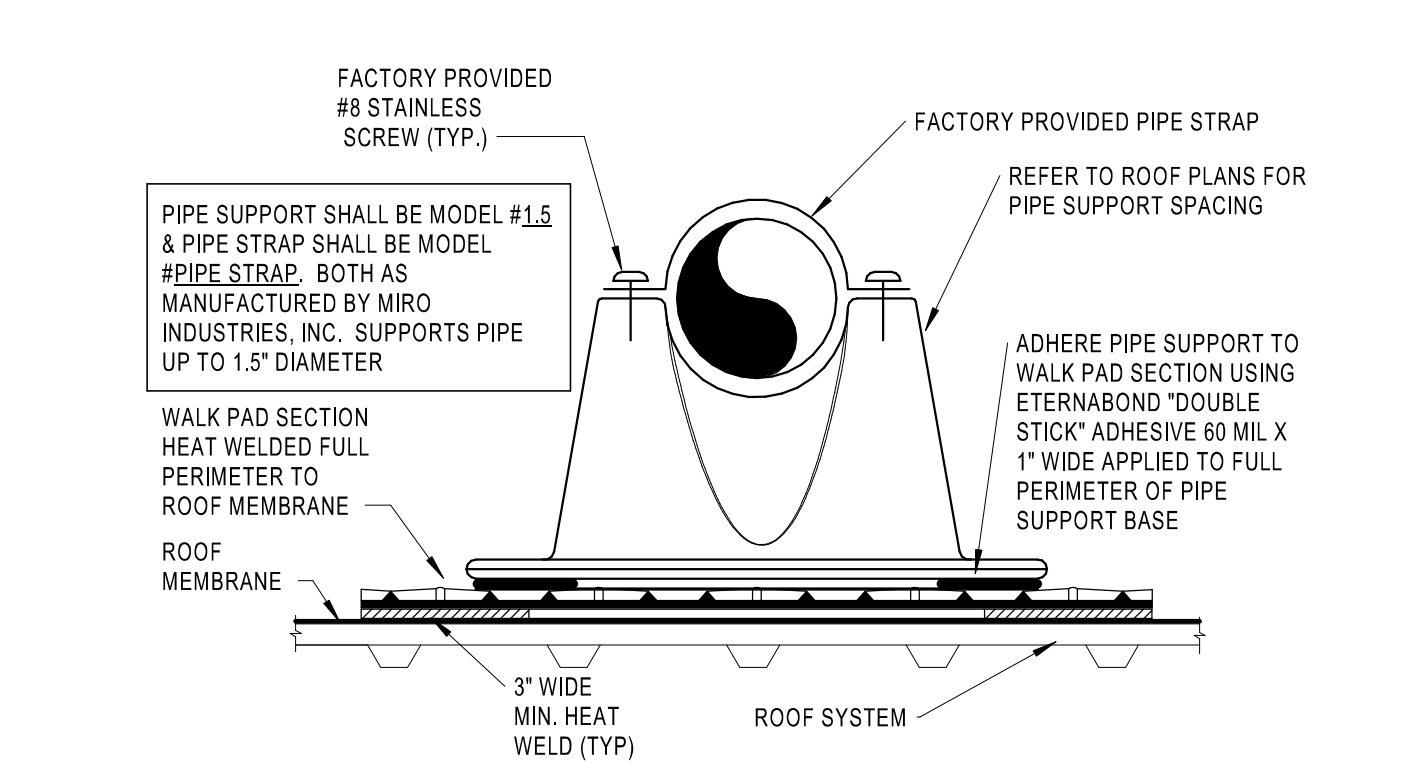
7 CEILING EXHAUST FAN DETAIL
M4.0 NTS



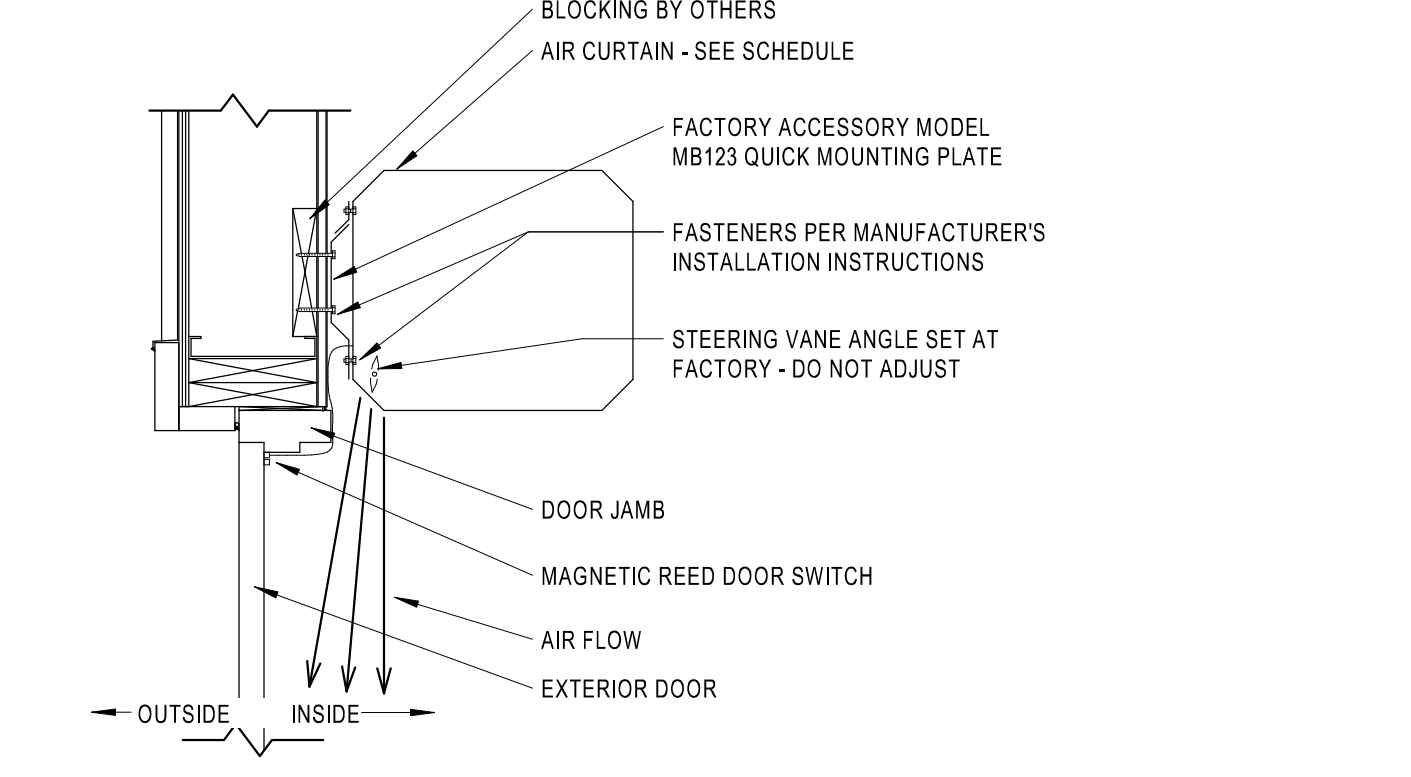
8 TYPICAL EXHAUST FAN DETAIL
M4.0 NTS



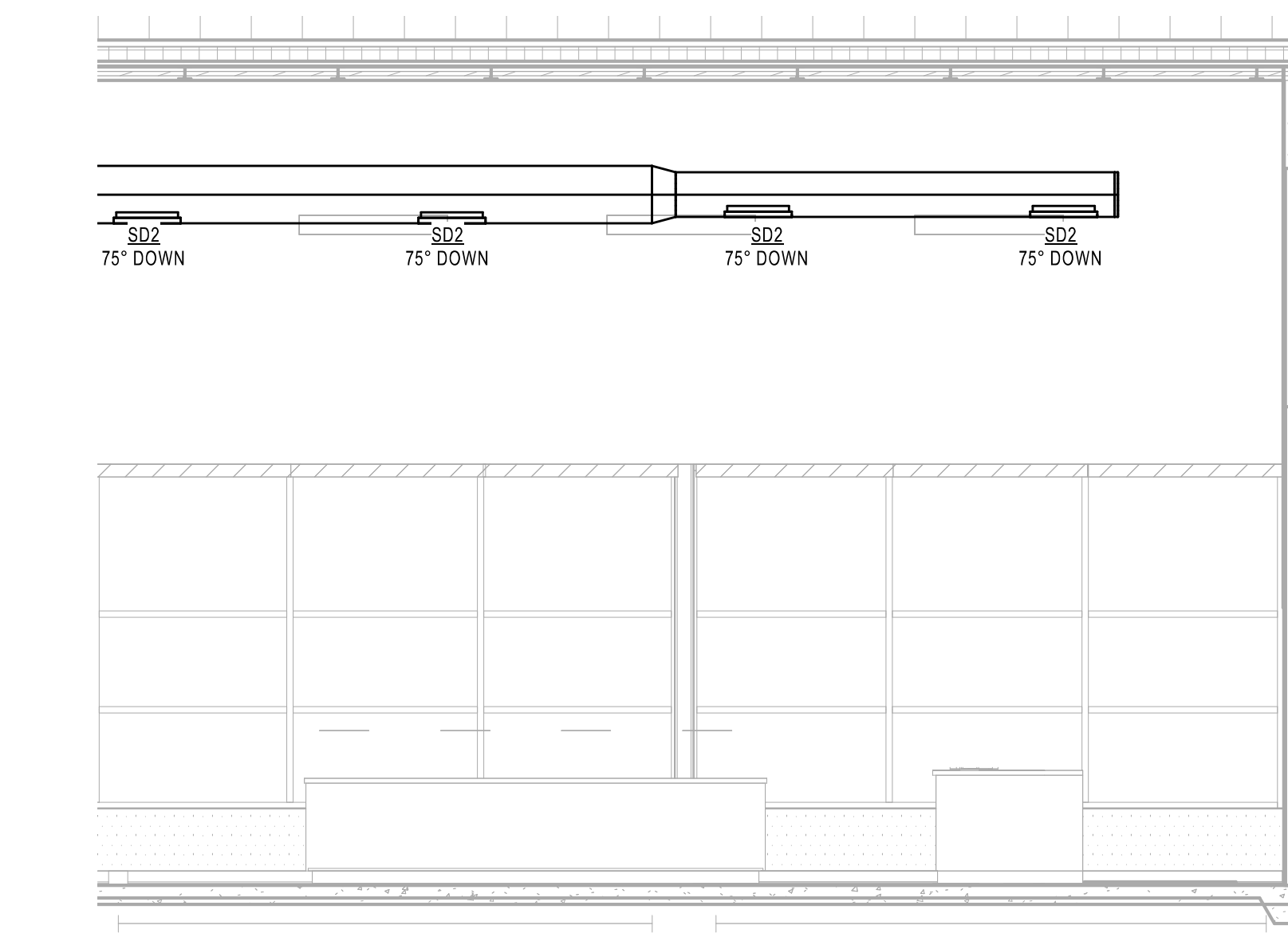
9 PIPE HANGER FOR STEEL JOIST DETAIL
NTS



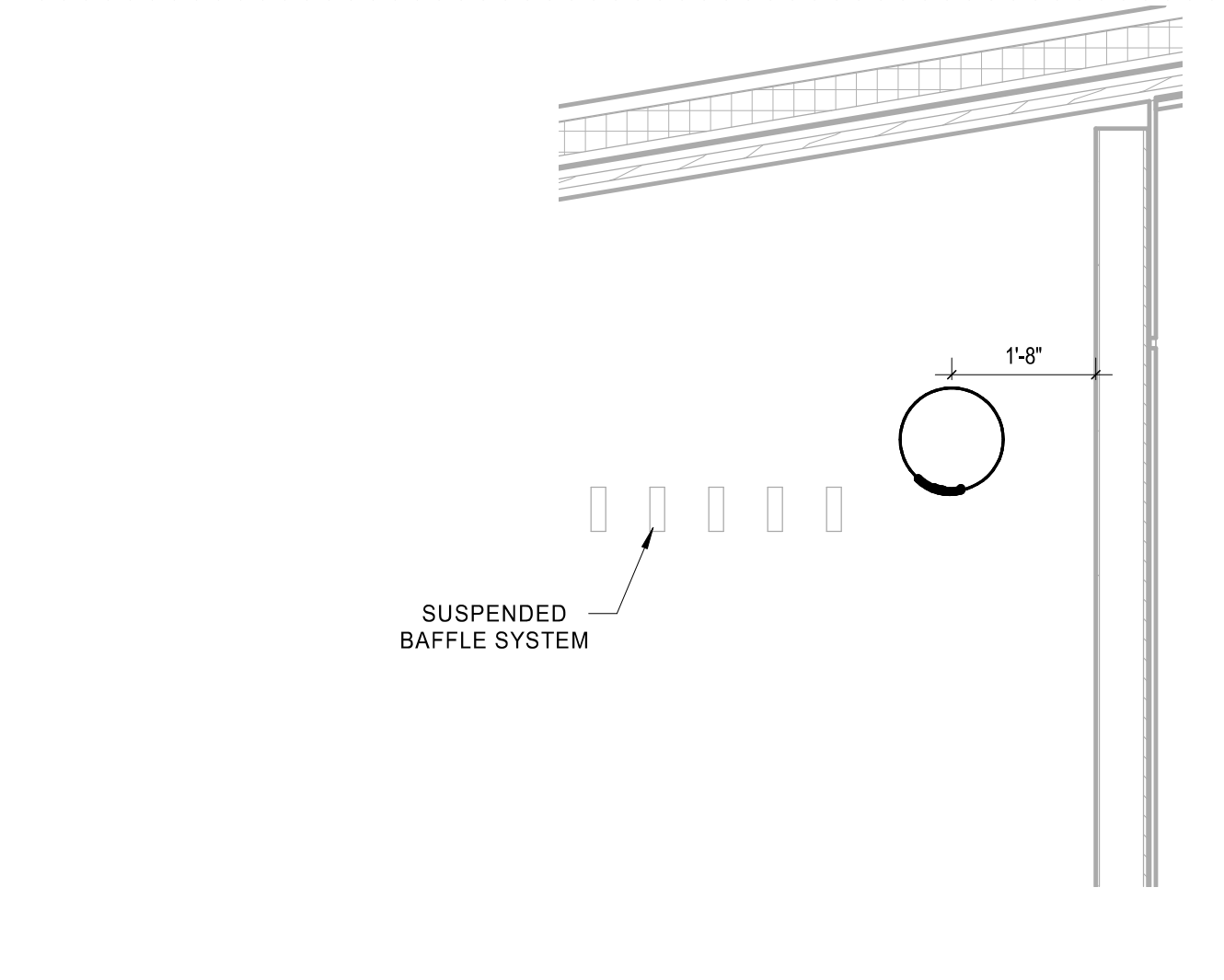
10 HVAC CONDENSATE PIPE ROOF SUPPORT DETAIL
M4.0 NTS



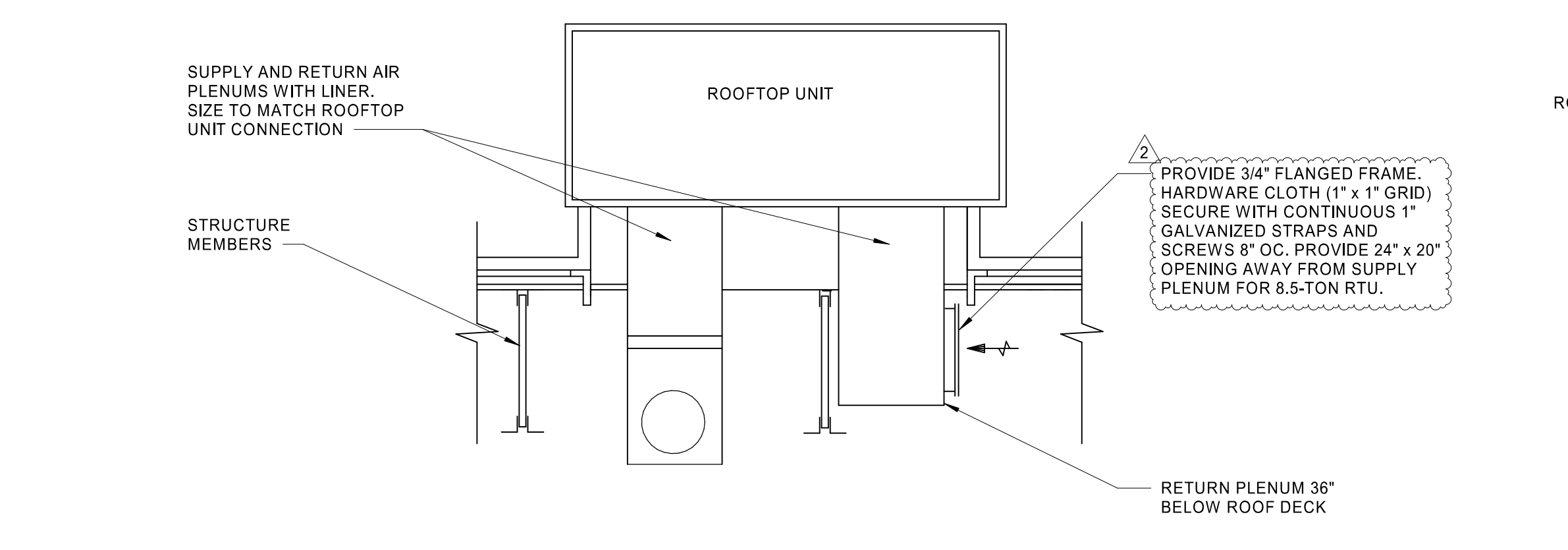
11 HVAC AIR CURTAIN INSTALLATION DETAIL
M4.0 NTS



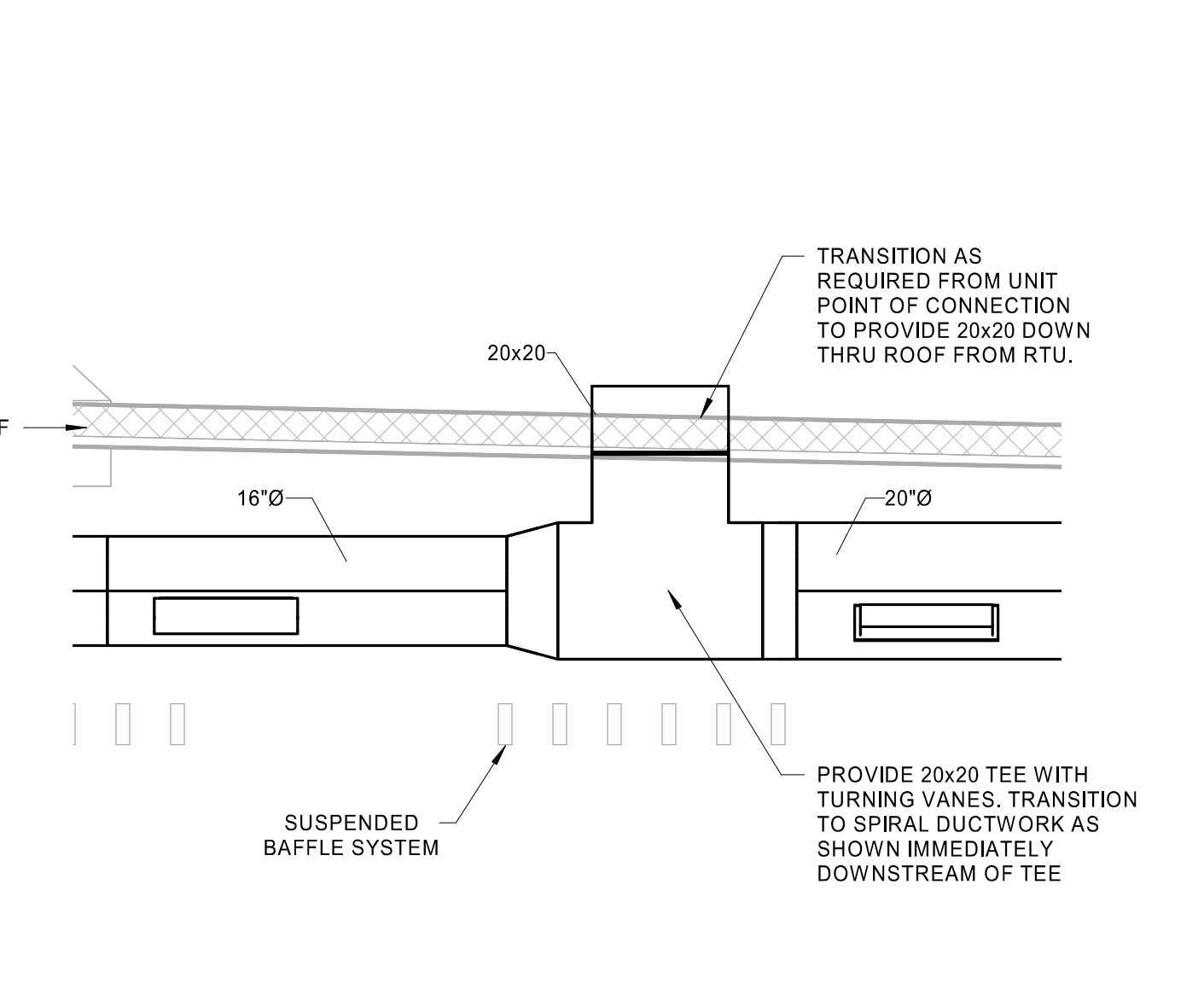
12 FRONT RETAIL DIFFUSER LAYOUT
M4.0 1/2" = 1'-0"



13 FRONT RETAIL DIFFUSER ANGLE DETAIL
M4.0 1/2" = 1'-0"



14 RTU DUCTWORK DROP DETAIL
M4.0 NOT TO SCALE



15 RTU-2 SUPPLY DUCTWORK DROP
M4.0 1/2" = 1'-0"

STIPULATION FOR REUSE: THE DRAWINGS ARE PREPARED FOR THE PROJECT AND SHALL BE USED ONLY FOR THE PROJECT AND SHALL NOT BE REPRODUCED OR COPIED IN ANY MANNER WITHOUT THE WRITTEN CONSENT OF HFA-AE, LTD. THE DRAWINGS ARE THE PROPERTY OF HFA-AE, LTD. AND SHALL BE KEPT IN CONFIDENCE. ANY REUSE OF THE DRAWINGS FOR ANY OTHER PROJECT WITHOUT THE WRITTEN CONSENT OF HFA-AE, LTD. IS STRICTLY PROHIBITED.

WAWA
STORE NUMBER: 7408
1100 S. W. 11TH ST
INDIANAPOLIS, IN 46240
JOB NUMBER: 42-2345102

ISSUE BLOCK

REV	DATE
2	07/16/24

CHECKED BY: MJS
DRAWN BY: SGB
DOCUMENT DATE: 07/16/24
PROTO: U59FB-L
PROTO CYCLE: 2023.Q4.G5
PLAN ISSUE: CNST SET

JOHN KENNETH RILEY
No 11800661
STATE OF INDIANA
Professional Engineer
2024.07.16 10:51:06-0500

MECHANICAL DETAILS

KEYNOTES	
#	NOTE
23.20	CONTRACTOR SHALL REVIEW ELECTRICAL POWER REQUIREMENTS FOR MECHANICAL EQUIPMENT THAT ARE SCHEDULED ON THE ELECTRICAL DRAWINGS AND VERIFY THAT THEY MATCH PRIOR TO ORDERING EQUIPMENT. DO NOT PURCHASE MOTORS OR ELECTRICAL EQUIPMENT UNTIL POWER CHARACTERISTICS AVAILABLE AT BUILDING HAVE BEEN CONFIRMED BY CONTRACTOR.
23.21	PROVIDE NEW ROOFTOP UNIT WITH PRE-FABRICATED MINIMUM 14 INCH HIGH INSULATED ROOF CURB. MAINTAIN MINIMUM HEIGHT OF 5" FROM ROOF SURFACE. TIE DOWN TO CURB USING LENNOX ROOF CLIPS APPROVED FOR LOCAL WIND ZONE. FIELD COORDINATE SIZE WITH MANUFACTURER REQUIREMENTS PRIOR TO BID.
23.22	MECHANICAL TO ENSURE RTU HAS PAN SENSOR (OVERFLOW SWITCH) INSIDE ROOFTOP UNIT DRAIN PAN. THIS DEVICE SHALL SHUT OFF THE EQUIPMENT SERVED IN THE EVENT THAT THE PRIMARY DRAIN BECOMES RESTRICTED.
23.23	COORDINATE ROOFTOP EQUIPMENT LOCATION AND OPENING IN THE ROOF WITH THE STRUCTURAL MEMBERS PRIOR TO CUTTING DECK.
23.24	INSTALLATION OF EQUIPMENT SHALL COMPLY WITH EQUIPMENT MANUFACTURER'S INSTALLATION AND CLEARANCE REQUIREMENTS TO ALLOW FOR INSPECTION, SERVICE, REPAIR OR REPLACEMENT.
23.25	CONDENSATE PIPING IS LOCATED ON ROOF. PROVIDED BY MECHANICAL CONTRACTOR. PROVIDE SUPPORTS EVERY 4'. ROUTE TO NEAREST ROOF DRAIN/SCUPPER.

HFA
HFA-AE, L.T.D.
1705 S. Walton Blvd., Suite 3
Bentonville, Arkansas 72712
www.hfa-ac.com
t 479.273.7780

STIPULATION FOR REUSE
THIS DRAWING WAS PREPARED FOR THE PROJECT AND IS THE PROPERTY OF WAWA. IT IS TO BE USED ONLY FOR THE PROJECT AND NOT TO BE REPRODUCED OR TRANSMITTED IN ANY FORM OR BY ANY MEANS, ELECTRONIC OR MECHANICAL, INCLUDING PHOTOCOPYING, RECORDING, OR BY ANY INFORMATION STORAGE AND RETRIEVAL SYSTEM. WITHOUT THE WRITTEN PERMISSION OF WAWA, THIS DRAWING IS NOT TO BE REPRODUCED OR TRANSMITTED IN ANY FORM OR BY ANY MEANS, ELECTRONIC OR MECHANICAL, INCLUDING PHOTOCOPYING, RECORDING, OR BY ANY INFORMATION STORAGE AND RETRIEVAL SYSTEM.

WAWA
STORE NUMBER: 7408
1000 N. WASHINGTON ST.
INDIANAPOLIS, IN 46240
JOB NUMBER: 42-234-1002

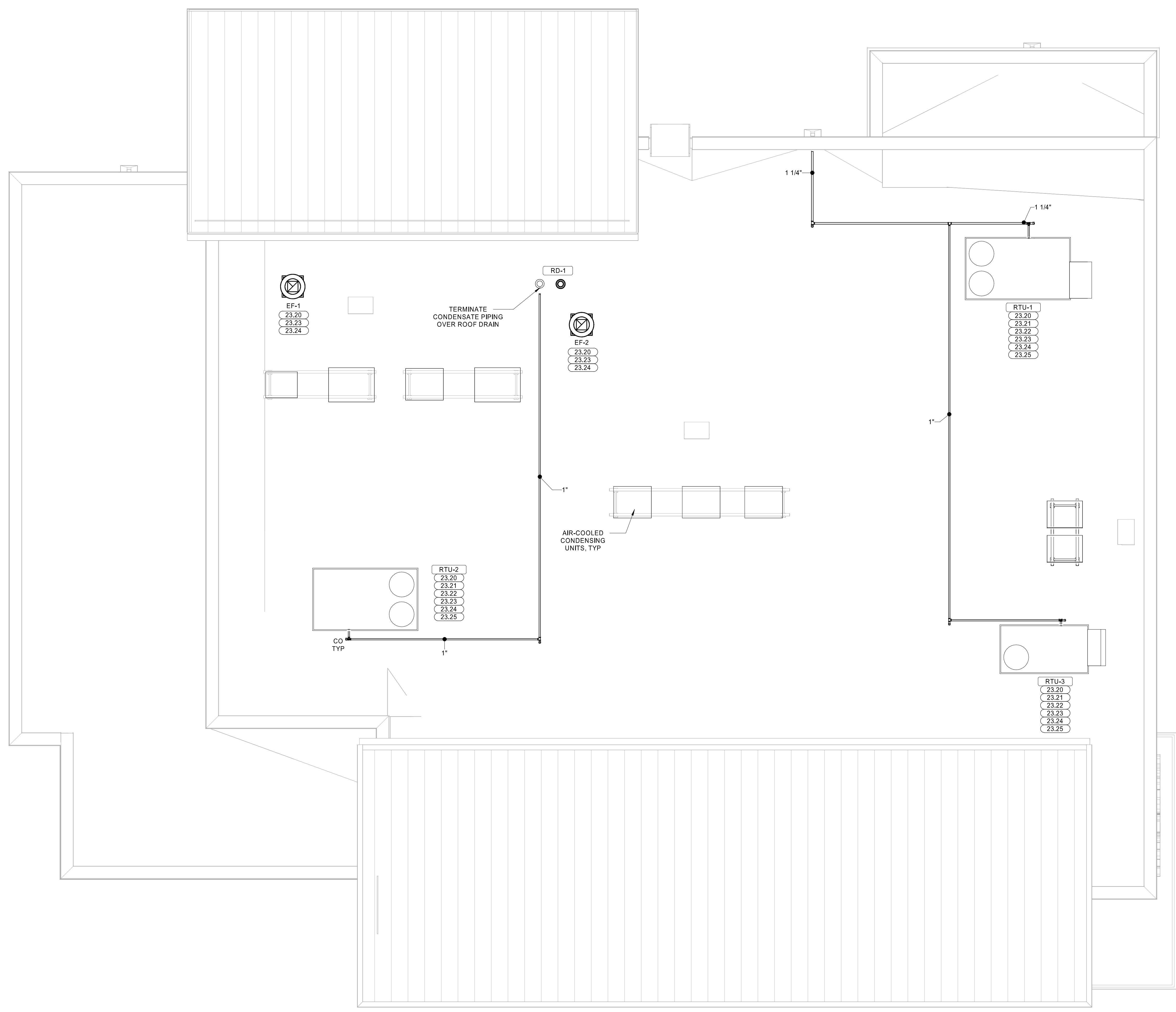
ISSUE BLOCK	

CHECKED BY: MJS
DRAWN BY: SGB
DOCUMENT DATE: 07/16/24
PROTO: U59FB-L
PROTO CYCLE: 2023.Q4.G5
PLAN ISSUE: CNST SET



HVAC ROOF PLAN

SHEET: M2.0



1 ROOF PLAN MECHANICAL
1/4" = 1'-0"

2024.07.16 10:49:40-0500
 C:\Users\jkriley\OneDrive\Documents\2024\Drawings\24-1602_2024_07_16_10_49_40-0500\24-1602_2024_07_16_10_49_40-0500.dwg
 24-1602_2024_07_16_10_49_40-0500.dwg