

**Report By:**

National TAB  
1329 E. KEMPER ROAD  
SUITE 4210  
CINCINNATI, OH 45246



**Report: Preliminary Report**  
**Function: Test, Adjust, & Balance**  
**Date: 11/23/2025**  
**Completed By: National TAB**

**PROJECT**  
**11-17-25 WAWA #5454 LEESBURG, FL**

SR 44 & WEST MAIN STREET

LEESBURG , FL

**Client**

Wawa  
260 West Baltimore Pike

Wawa, PA 19063

# National TAB

Project: 11-17-25 WAWA #5454 LEESBURG, FL

## Table Of Contents

Section	Page #
AHU/RTU	3
FAN - Exhaust	12
Checklist Data	17
Issue Data	31

# National TAB

Project: 11-17-25 WAWA #5454 LEESBURG, FL

System/Unit: AHU/RTU



Asset: RTU1

AREA:RETAIL

Unit Data		
	Design	Actual
MFG	LENNOX	LENNOX
Serial Num	-	5624L02315
Model Num	LCT102H4E	LCT102H4EG2Y
Type	RTU	RTU
Configuration	VERTICAL	VERTICAL
Num OA Filters 1	-	1
OA Filter Size 1	-	34x14.125
Num Final Filter 1	-	4
Final Filter Size 1	-	20x25x2

Motor Data		
	Design	Actual
Horsepower	3.75	3.8
Phase	3	3
Rated Voltage	208	208
Rated Amperage	-	8.7
Service Factor	-	

Drive Data	
	Actual
Motor Sheave SetPt	DIRECT DRIVE

Test Data		
	Design	Actual
SF CFM	3400	3430
SF RPM	-	979
MOTOR RPM	-	DIRECT DRIVE
RA CFM	2900	2937
OA CFM	500	493
RL Voltage	-	215/215/216
RL Amperage	-	2.5/2.5/2.4
SF System SetPt	-	63%
RA Damper Type	-	NONE
OA Damper Position	-	32%
OA Damper Type	-	MOTORIZED

Performance Data		
	Design	Actual
MA Plenum SP	-	
Fan Suction SP	-	-0.26"
Fan Discharge SP	-	0.52"
Total ESP	0.50"	
Fan Total SP	-	

## Unit Data - PHOTO LOG



11/17/2025

# National TAB

Project: 11-17-25 WAWA #5454 LEESBURG, FL

## AHU/RTU



**Diffuser Supply (GRD)**

**RTU1/RETAIL**

Asset									
Asset Name	Location	Type	Size	DESIGN CFM	AK	CFM(1)	CFM(2)	FINAL CFM	% to design
SGRD1	RETAIL	LD-1	10"	350	1			365	104.3
SGRD2	RETAIL	LD-1	10"	350	1			341	97.4
SGRD3	RETAIL	LD-1	10"	350	1			349	99.7
SGRD4	RETAIL	LD-1	10"	325	1			347	106.8
SGRD5	ASSOCIATES	CD-1	8"	150	1			153	102.0
SGRD6	OFFICE	CD-1	8"	150	1			152	101.3
SGRD7	RETAIL	LD-1	10"	325	1			357	109.8
SGRD8	RETAIL	LD-1	10"	325	1			322	99.1
SGRD9	RETAIL	LD-1	10"	325	1			330	101.5
SGRD10	RETAIL	LD-1	10"	325	1			293	90.2
SGRD11	WOMENS RR	CD-3	6"	50	1			54	108.0
SGRD12	REAR VESTIBULE	CD-3	6"	100	1			109	109.0
SGRD13	MENS RR	CD-3	6"	75	1			71	94.7
SGRD14	DELIVERY	CD-1	8"	200	1			187	93.5
Total				3400		0	0	3430	100.88%

# National TAB

Project: 11-17-25 WAWA #5454 LEESBURG, FL

## System/Unit: AHU/RTU



Asset: RTU2

AREA:FOOD SERVICE

Unit Data		
	Design	Actual
MFG	LENNOX	LENNOX
Serial Num	-	5624K02264
Model Num	LCT150H4E	LCT150H4EN1Y
Type	RTU	RTU
Configuration	VERTICAL	VERTICAL
Num OA Filters 1	-	1
OA Filter Size 1	-	23x14.125
Num Final Filter 1	-	4
Final Filter Size 1	-	20x25x2

Motor Data		
	Design	Actual
Horsepower	3.75	3.8
Phase	3	3
Rated Voltage	208	208
Rated Amperage	-	8.7

Drive Data	
	Actual
Motor Sheave SetPt	DIRECT DRIVE

Test Data		
	Design	Actual
SF CFM	5000	4669
SF RPM	-	1847
MOTOR RPM	-	DIRECT DRIVE
RA CFM	4250	3931
OA CFM	750	738
RL Voltage	-	213/214/214
RL Amperage	-	5.6/5.6/5.7
SF System SetPt	-	84
RA Damper Type	-	NONE
OA Damper Position	-	51%
OA Damper Type	-	MOTORIZED

Performance Data		
	Design	Actual
MA Plenum SP	-	
Fan Suction SP	-	-0.37
Fan Discharge SP	-	0.80"
Total ESP	0.50"	
Fan Total SP	-	

**Notes:**

GRD and MSET RTU schedule do not match. Diffuser 3 calls for 0 CFM.

Written By: Jackson Gunnels on 11/18/2025

## Unit Data - PHOTO LOG



11/17/2025

# National TAB

Project: 11-17-25 WAWA #5454 LEESBURG, FL

## AHU/RTU



**Diffuser Supply (GRD)**

**RTU2/FOOD SERVICE**

Asset									
Asset Name	Location	Type	Size	DESIGN CFM	AK	CFM(1)	CFM(2)	FINAL CFM	% to design
SGRD1	FOOD SERVICE	LD-1	12"	500	1	506	493	506	101.2
SGRD2	FOOD SERVICE	LD-1	12"	500	1	513	484	459	91.8
SGRD3	FOOD SERVICE	LD-1	12"	0	1	239	181	164	-
SGRD4	FOOD SERVICE	LD-1	12"	500	1	383	468	461	92.2
SGRD5	FOOD SERVICE	LD-1	12"	500	1	551	563	485	97.0
SGRD6	FOOD SERVICE	LD-1	12"	500	1	665	429	488	97.6
SGRD7	BACK ROOM	CD-1	10"	425	1	570	407	415	97.6
SGRD8	BACK ROOM	CD-1	10"	425	1	539	456	454	106.8
SGRD9	WASHROOM	CD-1	12"	525	1	688	574	561	106.9
SGRD10	STAGING	CD-1	6"	75	1	89	89	81	108.0
SGRD11	ELECTRICAL ROOM	CD-1	12"	550	1	733	596	595	108.2
Total				4500		5476	4740	4669	103.76%

**Diffuser Ret/Exh (GRD)**

**RTU2/FOOD SERVICE**

Asset									
Asset Name	Location	Type	Size	DESIGN CFM	AK	CFM(1)	CFM(2)	FINAL CFM	% to design
EGRD1	FOOD SERVICE	G-1	14"	900					-
EGRD2	FOOD SERVICE	G-1	14"	800					-
EGRD3	FOOD SERVICE	G-1	14"	800					-
EGRD4	FOOD SERVICE	G-1	14"	850					-
EGRD5	FOOD SERVICE	G-1	14"	900					-
Total				4250		0	0	0	0%

# National TAB

Project: 11-17-25 WAWA #5454 LEESBURG, FL

System/Unit: AHU/RTU



Asset: RTU3

AREA:FOH

Unit Data		
	Design	Actual
MFG	LENNOX	LENNOX
Serial Num	-	5624L02318
Model Num	LCT092H4E	LCT092H4ERG2Y
Type	RTU	RTU
Configuration	VERTICAL	VERTICAL
Num OA Filters 1	-	1
OA Filter Size 1	-	34X14.125
Num Final Filter 1	-	4
Final Filter Size 1	-	20X25X2

Motor Data		
	Design	Actual
Horsepower	3.75	8
Phase	3	3
Rated Voltage	208	208
Rated Amperage	-	8.7

Drive Data	
	Actual
Motor Sheave SetPt	DIRECT DRIVE

Test Data		
	Design	Actual
SF CFM	3000	2972
SF RPM	-	1014
MOTOR RPM	-	DIRECT DRIVE
RA CFM	2550	2523
OA CFM	450	449
RL Voltage	-	213/214/214
RL Amperage	-	5.3/6.3/6.4
SF System SetPt	-	57%
RA Damper Type	-	NONE
OA Damper Position	-	39%
OA Damper Type	-	MOTORIZED

Performance Data		
	Design	Actual
MA Plenum SP	-	
Fan Suction SP	-	-0.20"
Fan Discharge SP	-	0.33"
Total ESP	-	0.72"
Fan Total SP	-	0.53"

# Unit Data - PHOTO LOG



11/17/2025

# National TAB

Project: 11-17-25 WAWA #5454 LEESBURG, FL

## AHU/RTU



**Diffuser Supply (GRD)**

**RTU3/FOH**

Asset									
Asset Name	Location	Type	Size	DESIGN CFM	AK	CFM(1)	CFM(2)	FINAL CFM	% to design
SGRD1	RETAIL	LD-1	10"	400	1	407	442	388	97.0
SGRD2	RETAIL	LD-1	10"	350	1	413	414	363	103.7
SGRD3	RETAIL	LD-1	10"	350	1	438	380	333	95.1
SGRD4	RETAIL	LD-1	10"	350	1	374	390	342	97.7
SGRD5	RETAIL	LD-1	10"	350	1	379	400	351	100.3
SGRD6	RETAIL	LD-1	10"	350	1	348	377	331	94.6
SGRD7	RETAIL	LD-1	10"	350	1	440	434	381	108.9
SGRD8	ENTRANCE	CD-2	12"	500	1	661	551	483	96.6
Total				3000		3460	3388	2972	99.07%

# National TAB

Project: 11-17-25 WAWA #5454 LEESBURG, FL

System/Unit: FAN - Exhaust



Asset: EF1

AREA:BOH

Unit Data		
	Design	Actual
MFG	GREENHECK	GREENHECK
Model Num	G-140	G-140
Serial Num	-	
Type	DOWNBLAST	CENTRIFUGAL
Configuration	VERTICAL	VERTICAL

Motor Data		
	Design	Actual
Motor MFG	-	
Frame	-	48Y
Horsepower	0.125	0.25
Motor Rpm	-	1140
Phase	1	1
Voltage (rated)	120	120
Amperage (rated)	-	3.2
Service Factor	-	1.00

Test Data		
	Design	Actual
CFM	1200	
Fan RPM	818	
Fan Rotation	-	
Motor RPM	-	
System SetPt	-	
RL Voltage	-	
RL Amperage	-	
Total ESP	0.375"	
Fan Inlet SP	-	
Fan Discharge SP	-	



# National TAB

Project: 11-17-25 WAWA #5454 LEESBURG, FL

## FAN - Exhaust



**Diffuser Ret/Exh (GRD)**

**EF1/BOH**

Asset									
Asset Name	Location	Type	Size	DESIGN CFM	AK	CFM(1)	CFM(2)	FINAL CFM	% to design
EGRD1	WOMENS RR	G-3	6"	100	1				-
EGRD2	RESTROOM	G-3	6"	100	1				-
EGRD3	MENS RR	G-3	6"	50	1				-
EGRD4	FOOD SERVICE	G-1	8"	200	1				-
EGRD5	FOOD SERVICE	G-1	8"	200	1				-
EGRD6	FOOD SERVICE	G-1	8"	200	1				-
EGRD7	FOOD SERVICE	G-1	8"	200	1				-
EGRD8	STAGING	G-1	6"	100	1				-
EGRD9	STAGING	G-1	6"	50	1				-
Total				1200		0	0	0	0%

# National TAB

Project: 11-17-25 WAWA #5454 LEESBURG, FL

System/Unit: FAN - Exhaust



Asset: EF2

AREA:WATER SERVICE

Unit Data		
	Design	Actual
MFG	GREENHECK	GREENHECK
Model Num	CSP-B110	CSP-B110
Serial Num	-	
Type	INLINE	INLINE
Configuration	HORIZONTAL	HORIZONTAL

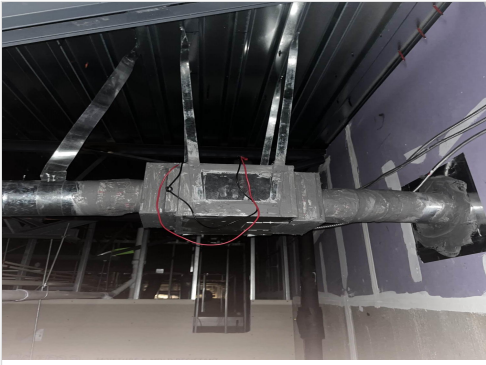
Test Data		
	Design	Actual
CFM	60	93
Fan RPM	584	
Fan Rotation	-	CORRECT
Motor RPM	-	
System SetPt	-	MINIMUM
RL Voltage	-	123
RL Amperage	-	0.15
Total ESP	0.125"	0.09"
Fan Inlet SP	-	-0.09"
Fan Discharge SP	-	ATM

Notes:

Fan is at minimum speed.

Written By: Jackson Gunnels on 11/18/2025

## Unit Data - PHOTO LOG



11/23/2025

## CheckList List

- 01: RTU's/AHU's
- 02: LENNOX SETUP PARAMETERS
- 03: SENSOR WIRING (LENNOX)
- 04: EF'S
- 05: CLOSEOUT CHECKS
- RTU 1: SMOKE DETECTOR
- RTU 2: SMOKE DETECTOR
- RTU 3: SMOKE DETECTOR



11-17-25 WAWA #5454 LEESBURG, FL

CheckList Information

**Name :** 01: RTU's/AHU's **Status :** Completed

**Assigned Organization :** National TAB **Asset :**

**Requesting Organization :** National TAB

**Created Date :** 11/17/2025 - Natasha Louw - National TAB

**Completed Date :** 11/19/2025 - Jackson Gunnels - National TAB

CheckList Item Details

RTU's/AHU's

All diffusers and grilles are installed and match design?	Pass
---	------

Comment:

Clean filters installed?	Pass
--------------------------	------

Comment:

Economizers are assembled and functional?	Pass
---	------

Comment:

Motors are all operating below the FLA rating?	Pass
--	------

Comment:

Are belts tight?	N/A
------------------	-----

Comment:

If direct drive unit is the speed controller working?	Pass
---	------

Comment:

Is gas piping installed and valves turned on?	N/A
---	-----

Comment:

Condensate drains are installed?

Pass

Comment:

Unit free of noticeable noise and vibration

Pass

Comment:

Final outside air damper position is marked with permanent marker?

Pass

Comment:

No alarms present?

Pass

Comment:

Any noticeable duct leakage?

Pass

Comment:

Total supply and OA flows are balanced within +/-5% and supply & return diffusers within +/-10%?

Pass

Comment:

Adjust side wall diffusers on spiral duct that blow towards the coffee island drop-in to prevent issues with it staying at temperature. Fan out of the deflector blades or reduce airflow as necessary to prevent drafting.

N/A

Comment:

IN TEST MODE, TEST THE FOLLOWING:

Cooling mode is operational? Record EAT/LAT for each unit:

Pass

Comment:

Heating mode is operational? Record EAT/LAT for each unit:

Fail

Comment:

Unit 1 did not reach 10 degrees above ambient

Dehumidification mode is operational? (Feel dehumidification coil with your hand. Is it hot?) Record EAT/LAT for each unit:

Fail

**Comment:**

Units did not show reheat. Discharge remained low and reheat coils were not warm to touch.

<b>Component Test</b> Dehumidification - Reheat Valve 1 Test in Progress	
REHEAT VALVE 1	
Status	On
Discharge Air Temperature	54°F
Return Air Temperature	67°F
<b>11/19/2025</b>	

<b>Component Test</b> Dehumidification - Reheat Valve 1 Test in Progress	
REHEAT VALVE 1	
Status	On
Discharge Air Temperature	56°F
Return Air Temperature	67°F
<b>11/19/2025</b>	

<b>Component Test</b> Dehumidification - Reheat Valve 1 Test in Progress	
REHEAT VALVE 1	
Status	On
Discharge Air Temperature	55°F
Return Air Temperature	68°F
<b>11/19/2025</b>	

**Notes/Comments :**

Returns on unit 2 have not yet been balanced

**Date :**11/19/2025



## 11-17-25 WAWA #5454 LEESBURG, FL

### CheckList Information

**Name :** 02: LENNOX SETUP PARAMETERS **Status :** Completed  
**Assigned Organization :** National TAB **Asset :**  
**Requesting Organization :** National TAB  
**Created Date :** 11/17/2025 - Natasha Louw - National TAB  
**Completed Date :** 11/24/2025 - Jackson Gunnels - National TAB

### CheckList Item Details

#### UNIT ID CONFIGURATIONS

BACNET CONFIGURATION: GO TO SETTINGS>GENERAL>CONFIGURATION ID1 POSITION 5 SET TO "N". Pass

Comment:

NETWORK CONFIGURATION: GO TO SETUP>NETWORK INTEGRATION, SET TO BACNET IP Pass

Comment:

CONTROL MODE: SET CONTROL MODE TO ROOM SENSOR: CO2, TEMP & HUMIDITY (PER UNIT, AS NEEDED). Pass

Comment:

#### INDIVIDUAL PARAMETER CONFIGURATIONS (MECHANICAL CONTRACTOR TO DEFINE / AS APPLICABLE):

PARAMETER 105 DEHUMID MODE: 7 NO CONDITIONS Pass

Comment:

PARAMETER 106 DEHUMID SETPOINT: 50, THIS IS A CENTERED SET POINT (+/-) Yes

Comment:

PARAMETER 107 DEHUMID DEADBAND: 3 (DEFAULT) THIS IS THE ACTUAL +/- VALUE Pass

Comment:

PARAMETER 117 CO2 DAMPER MAX OPEN: 50%

Pass

Comment:

PARAMETER 118 CO2 START OPEN PPM: 1500

Pass

Comment:

PARAMETER 119 CO2 MAX OPEN PPM: 1500

Pass

Comment:

PARAMETER 137 OCCHET SET POINT: 68 (BACK UP)

Pass

Comment:

PARAMETER 131 SET TO THE SAME % AS THE MINMIUM OA DAMPER SETPOINT

Pass

Comment:

PARAMETER 139 OCC COOLING SET POINT: 72 (BACK UP)

Pass

Comment:

PARAMETER 154 OCC BLOWER MODE: ON-CONTINUOUS 1

Pass

Comment:

CFM VALUES / MSAV FAN SPEEDS (AIR BALANCER TO DEFINE / IF APPLICABLE):

OA DAMPER SET TO SAME POSITION IN ALL FAN SPEEDS?

Pass

Comment:

ALL FAN SPEEDS SET TO THE SAME CFM VALUE (ENTER SETPOINTS BELOW)

Pass

Comment:

HEAT CFM VALUE: PER THE HVAC SCHEDULE

Pass

Comment:

HIGH COOL CFM VALUE: THE HIGH COOL CFM VALUE

Pass

**Comment:**

---

**LOW COOL CFM VALUE: MATCH THE HIGH COOL CFM VALUE**

Pass

---

**Comment:**

---

**VENTILATION CFM VALUE: MATCH THE HIGH COOL CFM VALUE**

Pass

---

**Comment:**

---



11-17-25 WAWA #5454 LEESBURG, FL

**CheckList Information**

**Name :** 03: SENSOR WIRING (LENNOX) **Status :** Not Completed  
**Assigned Organization :** National TAB **Asset :**  
**Requesting Organization :** National TAB  
**Created Date :** 11/17/2025 - Natasha Louw - National TAB

**CheckList Item Details**

**COMBINATION TEMPERATURE/HUMIDITY SENSOR**

Sensors are installed where shown on the drawing?

Comment:

2 conductor shielded cable has one wire landed to Vin, one to GND, and the shield wire is not connected.

Comment:

For second shielded cable, one wire is landed to Vout and the shield wire is not connected.

Comment:

Verify that the CORE or Prodigy controller is sensing a relative humidity (record the reading)

Comment:



11-17-25 WAWA #5454 LEESBURG, FL

CheckList Information

**Name :** 04: EF'S **Status :** Completed

**Assigned Organization :** National TAB **Asset :**

**Requesting Organization :** National TAB

**Created Date :** 11/17/2025 - Natasha Louw - National TAB

**Completed Date :** 11/24/2025 - Jackson Gunnels - National TAB

CheckList Item Details

EF's

<b>Rotation is correct?</b>	N/A
-----------------------------	-----

**Comment:**

Unable to determine rotation on either fan.

<b>Belts are tight (if applicable)?</b>	N/A
---	-----

**Comment:**

<b>Speed controller installed and functional (if applicable)?</b>	Fail
---	------

**Comment:**

No speed controller on EF1

<b>There is no major leakage around base of fan?</b>	N/A
--	-----

**Comment:**

Unable to confirm. Ef1 unpowered

<b>Is the motor operating below the motor FLA rating?</b>	N/A
---	-----

**Comment:**

Ef1 does not have power

<b>Back draft damper installed and can it fully open?</b>	Pass
---	------

**Comment:**

---

**Unit free of noticeable noise and vibration?**

Pass

---

**Comment:**

---

**Total exhaust flow balanced within +/-5% and grilles are within +/-10%?**

Fail

---

**Comment:**

EF1 is unpowered. EF2 could not be slowed enough.

---



11-17-25 WAWA #5454 LEESBURG, FL

**CheckList Information**

**Name :** 05: CLOSEOUT CHECKS **Status :** Completed  
**Assigned Organization :** National TAB **Asset :**  
**Requesting Organization :** National TAB  
**Created Date :** 11/17/2025 - Natasha Louw - National TAB  
**Completed Date :** 11/24/2025 - Jackson Gunnels - National TAB

**CheckList Item Details**

**SPACE COMFORT**

**Is space free of drafting?** Pass

**Comment:**

**Is space comfortable in all areas?** Pass

**Comment:**

**Is the space free of ventilation noise?** Pass

**Comment:**

**BUILDING PRESSURE**

**Do actual net building airflow, design net building airflow, and pressure coincide? If not why? (All three should either be positive or negative)** Pass

**Comment:**



**11-17-25 WAWA #5454 LEESBURG, FL**

**CheckList Information**

**Name :** RTU 1: SMOKE DETECTOR **Status :** Not Completed  
**Assigned Organization :** National TAB **Asset :**  
**Requesting Organization :** National TAB  
**Created Date :** 11/17/2025 - Natasha Louw - National TAB

**CheckList Item Details**

RTU #

Smoke detector manufacturer/model

Comment:

Acceptable pressure tolerance

Comment:

Actual pressure measurement

Comment:

Pass/Fail:

Comment:



11-17-25 WAWA #5454 LEESBURG, FL

**CheckList Information**

**Name :** RTU 2: SMOKE DETECTOR **Status :** Not Completed

**Assigned Organization :** National TAB **Asset :**

**Requesting Organization :** National TAB

**Created Date :** 11/17/2025 - Natasha Louw - National TAB

**CheckList Item Details**

RTU #

Smoke detector manufacturer/model

Comment:

Acceptable pressure tolerance

Comment:

Actual pressure measurement

Comment:

Pass/Fail:

Comment:



11-17-25 WAWA #5454 LEESBURG, FL

**CheckList Information**

**Name :** RTU 3: SMOKE DETECTOR **Status :** Not Completed

**Assigned Organization :** National TAB **Asset :**

**Requesting Organization :** National TAB

**Created Date :** 11/17/2025 - Natasha Louw - National TAB

**CheckList Item Details**

RTU #

Smoke detector manufacturer/model

Comment:

Acceptable pressure tolerance

Comment:

Actual pressure measurement

Comment:

Pass/Fail:

Comment:

## Issue List

- EF 1 Motor Driver
- EF1 No power
- EF2 CFM
- Final Air Filters
- RTU 3 Heating
- RTUs 1-3 Dehumidification



**11-17-25 WAWA #5454 LEESBURG, FL**

**Project Issue Information**

**Issue Name :** EF 1 Motor Driver  
**Description :** Unable to locate a driver for EF 1 in motor compartment or in crawlspaces above ceiling.  
**Created By :** National TAB                      **Assigned To :** National TAB - Dan Hertenstein  
**Status :** Open  
**Priority :** Urgent                                      **Asset Tag :** EF1  
**Originated Date :** 11/18/2025 - Jackson Gunnels - National TAB

Project Issue File Details



11/19/2025



**11-17-25 WAWA #5454 LEESBURG, FL**

**Project Issue Information**

**Issue Name :** EF1 No power  
**Description :** EF1 is not receiving any power.  
**Created By :** National TAB                      **Assigned To :** National TAB - Dan Hertenstein  
**Status :** Open  
**Priority :** Urgent                                      **Asset Tag :** EF1  
**Originated Date :** 11/18/2025 - Jackson Gunnels - National TAB

Project Issue File Details



11/18/2025



**11-17-25 WAWA #5454 LEESBURG, FL**

**Project Issue Information**

<b>Issue Name :</b>	EF2 CFM		
<b>Description :</b>	Was unable to set fan speed low enough to be within design CFM		
<b>Created By :</b>	National TAB	<b>Assigned To :</b>	National TAB - Dan Hertenstein
<b>Status :</b>	Open		
<b>Priority :</b>	Medium	<b>Asset Tag :</b>	EF2
<b>Originated Date :</b>	11/19/2025 - Jackson Gunnels - National TAB		



**11-17-25 WAWA #5454 LEESBURG, FL**

**Project Issue Information**

**Issue Name :** Final Air Filters  
**Description :** Final air filters show accumulation of dust. Recommend replacing. Filters removed for TAB  
**Created By :** National TAB                      **Assigned To :** National TAB - Dan Hertenstein  
**Status :** Closed  
**Priority :** Medium                                      **Asset Tag :**  
**Originated Date :** 11/17/2025 - Jackson Gunnels - National TAB

Project Issue File Details



11/17/2025

Project Issue Response Details

- **11/18/2025 National TAB - Jackson Gunnels**
  - Filters replaced. Issue resolved.



11-17-25 WAWA #5454 LEESBURG, FL

Project Issue Information

**Issue Name :** RTU 3 Heating  
**Description :** RTU 3 was unable to satisfy pass condition of 10 degrees above entering air temperature during testing.  
**Created By :** National TAB                      **Assigned To :** National TAB - Dan Hertenstein  
**Status :** Open  
**Priority :** Urgent                                      **Asset Tag :** RTU3  
**Originated Date :** 11/19/2025 - Jackson Gunnels - National TAB

Project Issue File Details

The screenshot shows a table with the following data:

Component Test	
Heating - Heating Stage 2	
Test In Progress	
HEATING STAGE 2	
Discharge Air Temperature	77°F
Return Air Temperature	72°F
Blower Speed	0%

11/19/2025



11-17-25 WAWA #5454 LEESBURG, FL

Project Issue Information

**Issue Name :** RTUs 1-3 Dehumidification  
**Description :** RTUs 1-3 were unable to reheat air during dehumidification test. Reheat coil was not warm to touch.  
**Created By :** National TAB                      **Assigned To :** National TAB - Dan Hertenstein  
**Status :** Open  
**Priority :** Urgent                                      **Asset Tag :** RTU1  
**Originated Date :** 11/19/2025 - Jackson Gunnels - National TAB

Project Issue File Details

Component Test	
Dehumidification - Reheat Valve 1	
Test in Progress	
REHEAT VALVE 1	
Status	On
Discharge Air Temperature	56°F
Return Air Temperature	67°F
11/19/2025	

Component Test	
Dehumidification - Reheat Valve 1	
Test in Progress	
REHEAT VALVE 1	
Status	On
Discharge Air Temperature	55°F
Return Air Temperature	68°F
11/19/2025	

Component Test	
Dehumidification - Reheat Valve 1	
Test in Progress	
REHEAT VALVE 1	
Status	On
Discharge Air Temperature	54°F
Return Air Temperature	67°F
11/19/2025	