

Report By:

National TAB
1329 E. KEMPER ROAD
SUITE 4210
CINCINNATI, OH 45246

NATIONAL

TAB

Comfort. Under control.

Report: Issues

Function: Test, Adjust, & Balance

Date: 04/11/2023

PROJECT

CW 2999 - UTSW (DALLAS, TX)

Cypress Waters

Dallas, TX

Client

Billingsley

National TAB

Project: CW 2999 - UTSW (DALLAS, TX)

Table Of Contents

Section	Page #
Issue Data	3
Issue Data	9
Issue Data	21



Comfort. Under control.

CW 2999 - UTSW (DALLAS, TX)

Project Issue Information

Issue Name : VHR-3-23

Description : The duct is leaking a large amount of CFM. When dampening diffuser 2 down to tolerance the extra CFM is dumped into the ceiling instead of moving to diffuser 1.

Created By : National TAB

Assigned To : National TAB - Scott Springer

Status : Open

Originated Date : 04/10/2023 - Chance Russel - National TAB



Comfort. Under control.

CW 2999 - UTSW (DALLAS, TX)

Project Issue Information

Issue Name : VRH-3-1

Description : Even after closing off half of the floor the cfm for this unit is low. Also fully dampened diffuser 3 is still high.

Created By : National TAB

Assigned To : National TAB - Scott Springer

Status : Open

Originated Date : 04/10/2023 - Chance Russel - National TAB

Project Issue Response Details

- **04/20/2023 National TAB - Chance Russel**
 - SA Duct leading up to the unit is 6" not 8". Then the duct transfers to about 3 feet of 8" flex duct before connecting to the unit.



Comfort. Under control.

CW 2999 - UTSW (DALLAS, TX)

Project Issue Information

Issue Name : VRH-3-13

Description : With diffusers 1 and 3 fully dampened diffuser 3 is still too high and diffuser 2 is too low. This is most likely caused by the duct placement.

Created By : National TAB

Assigned To : National TAB - Scott Springer

Status : Open

Originated Date : 04/10/2023 - Chance Russel - National TAB



Comfort. Under control.

CW 2999 - UTSW (DALLAS, TX)

Project Issue Information

Issue Name : VRH-3-17

Description : Unit is missing diffusers 4. Unit cannot be balanced until this is added. This has been fixed and the unit is balanced.

Created By : National TAB

Assigned To : National TAB - Scott Springer

Status : Closed

Originated Date : 04/11/2023 - Chance Russel - National TAB

Project Issue File Details



20230411_143610.jpeg



Comfort. Under control.

CW 2999 - UTSW (DALLAS, TX)

Project Issue Information

Issue Name : VRH-3-27

Description : Fully dampened diffusers 5 and 6 are still high. Diffuser 2 is low due to the duct work branching off diffuser 1's duct.

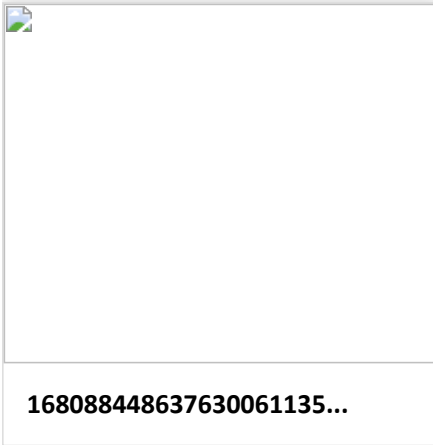
Created By : National TAB

Assigned To : National TAB - Scott Springer

Status : Open

Originated Date : 04/07/2023 - Chance Russel - National TAB

Project Issue File Details





Comfort. Under control.

CW 2999 - UTSW (DALLAS, TX)

Project Issue Information

Issue Name : VRH-3-28

Description : Fully dampered diffuser 4 and 5 are still high and 1 is still low.

Created By : National TAB

Assigned To : National TAB - Scott Springer

Status : Open

Originated Date : 04/06/2023 - Chance Russel - National TAB



Comfort. Under control.

CW 2999 - UTSW (DALLAS, TX)

Project Issue Information

Issue Name : EF-11-1

Description : Overall CFM was low even after turning motor up to 60 HZ. Checked dampers and opened one or two with no large change. Also the duct leading to E11-1-14 is missing.

Created By : National TAB

Assigned To : National TAB - Scott Springer

Status : Open

Originated Date : 04/19/2023 - Chance Russel - National TAB

Project Issue File Details



tmp_477e99a0_be97_497...



Comfort. Under control.

CW 2999 - UTSW (DALLAS, TX)

Project Issue Information

Issue Name : FPB-3-11

Description : At full open the max CFM produced is 221. All diffuser dampers are open and there is no damper between the unit and the main line. With the fan on, the unit can make it to the desired CFM.

Created By : National TAB

Assigned To : National TAB - Scott Springer

Status : Closed

Originated Date : 04/19/2023 - Chance Russel - National TAB

Project Issue Response Details

- **04/20/2023 National TAB - Chance Russel**

- Unit damper was not attached to the servo properly. This caused the damper to slip when attempting to open. This has been fixed and the unit is balanced.



Comfort. Under control.

CW 2999 - UTSW (DALLAS, TX)

Project Issue Information

Issue Name : FPB-3-20

Description : At full open the CFM is still low. Even after closing off most of the floor the CFM is low. There are no dampers between the unit and the SA duct and all diffuser dampers are open. Also the SA duct leading to the unit runs up and over another duct which could cause some loss in CFM.

Created By : National TAB

Assigned To : National TAB - Scott Springer

Status : Open

Originated Date : 04/18/2023 - Chance Russel - National TAB

Project Issue Response Details

• **04/20/2023 National TAB - Chance Russel**

- Traversing before the unit found that the CFM is 1772. Which is in tolerance as a total. I also found that air was escaping out the fan when off and that is probably where the issue is.



Comfort. Under control.

CW 2999 - UTSW (DALLAS, TX)

Project Issue Information

Issue Name : SA Duct Leakage

Description : Upon inspecting units that are low on CFM it was found that many duct seem to be leaking either at the unit box or at the SA duct splits. The split for FPB-3-20 was leaking and could be heard below the ceiling tile. This was patched as much as possible to reduce the noise but the duct is still leaking.

Created By : National TAB

Assigned To : National TAB - Scott Springer

Status : Open

Originated Date : 04/18/2023 - Chance Russel - National TAB



Comfort. Under control.

CW 2999 - UTSW (DALLAS, TX)

Project Issue Information

Issue Name : VHR-3-23

Description : The duct is leaking a large amount of CFM. When dampening diffuser 2 down to tolerance the extra CFM is dumped into the ceiling instead of moving to diffuser 1.

Created By : National TAB

Assigned To : National TAB - Scott Springer

Status : Open

Originated Date : 04/10/2023 - Chance Russel - National TAB



Comfort. Under control.

CW 2999 - UTSW (DALLAS, TX)

Project Issue Information

Issue Name : VRH-3-1

Description : Even after closing off half of the floor the cfm for this unit is low. Also fully dampened diffuser 3 is still high.

Created By : National TAB

Assigned To : National TAB - Scott Springer

Status : Open

Originated Date : 04/10/2023 - Chance Russel - National TAB

Project Issue Response Details

- **04/20/2023 National TAB - Chance Russel**
 - SA Duct leading up to the unit is 6" not 8". Then the duct transfers to about 3 feet of 8" flex duct before connecting to the unit.



Comfort. Under control.

CW 2999 - UTSW (DALLAS, TX)

Project Issue Information

Issue Name : VRH-3-13

Description : With diffusers 1 and 3 fully dampened diffuser 3 is still too high and diffuser 2 is too low. This is most likely caused by the duct placement.

Created By : National TAB

Assigned To : National TAB - Scott Springer

Status : Open

Originated Date : 04/10/2023 - Chance Russel - National TAB



Comfort. Under control.

CW 2999 - UTSW (DALLAS, TX)

Project Issue Information

Issue Name : VRH-3-17

Description : Unit is missing diffusers 4. Unit cannot be balanced until this is added. This has been fixed and the unit is balanced.

Created By : National TAB

Assigned To : National TAB - Scott Springer

Status : Closed

Originated Date : 04/11/2023 - Chance Russel - National TAB

Project Issue File Details



20230411_143610.jpeg



Comfort. Under control.

CW 2999 - UTSW (DALLAS, TX)

Project Issue Information

Issue Name : VRH-3-20

Description : Unit was missing the diffusers that goes to the restroom in the same hallway. The missing diffusers was added and unit is balanced.

Created By : National TAB

Assigned To : National TAB - Scott Springer

Status : Closed

Originated Date : 04/11/2023 - Chance Russel - National TAB



Comfort. Under control.

CW 2999 - UTSW (DALLAS, TX)

Project Issue Information

Issue Name : VRH-3-22

Description : Diffuser 4 does not have a damper and is thus extremely high on CFM. The diffusers is extremely close to the main duct as well.

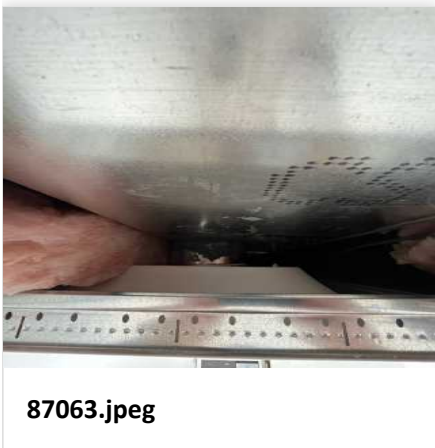
Created By : National TAB

Assigned To : National TAB - Scott Springer

Status : Open

Originated Date : 04/12/2023 - Chance Russel - National TAB

Project Issue File Details





Comfort. Under control.

CW 2999 - UTSW (DALLAS, TX)

Project Issue Information

Issue Name : VRH-3-27

Description : Fully dampened diffusers 5 and 6 are still high. Diffuser 2 is low due to the duct work branching off diffuser 1's duct.

Created By : National TAB

Assigned To : National TAB - Scott Springer

Status : Open

Originated Date : 04/07/2023 - Chance Russel - National TAB

Project Issue File Details



168088448637630061135...



Comfort. Under control.

CW 2999 - UTSW (DALLAS, TX)

Project Issue Information

Issue Name : VRH-3-28

Description : Fully dampered diffuser 4 and 5 are still high and 1 is still low.

Created By : National TAB

Assigned To : National TAB - Scott Springer

Status : Open

Originated Date : 04/06/2023 - Chance Russel - National TAB



Comfort. Under control.

CW 2999 - UTSW (DALLAS, TX)

Project Issue Information

Issue Name : EF-11-1

Description : Overall CFM was low even after turning motor up to 60 HZ. Checked dampers and opened one or two with no large change. Also the duct leading to E11-1-14 is missing.

Created By : National TAB

Assigned To : National TAB - Scott Springer

Status : Open

Originated Date : 04/19/2023 - Chance Russel - National TAB

Project Issue File Details



tmp_477e99a0_be97_497...



Comfort. Under control.

CW 2999 - UTSW (DALLAS, TX)

Project Issue Information

Issue Name : FPB-3-20

Description : At full open the CFM is still low. Even after closing off most of the floor the CFM is low. There are no dampers between the unit and the SA duct and all diffuser dampers are open. Also the SA duct leading to the unit runs up and over another duct which could cause some loss in CFM.

Created By : National TAB

Assigned To : National TAB - Scott Springer

Status : Open

Originated Date : 04/18/2023 - Chance Russel - National TAB

Project Issue Response Details

• **04/20/2023** **National TAB - Chance Russel**

- Traversing before the unit found that the CFM is 1772. Which is in tolerance as a total. I also found that air was escaping out the fan when off and that is probably where the issue is.



Comfort. Under control.

CW 2999 - UTSW (DALLAS, TX)

Project Issue Information

Issue Name : SA Duct Leakage

Description : Upon inspecting units that are low on CFM it was found that many duct seem to be leaking either at the unit box or at the SA duct splits. The split for FPB-3-20 was leaking and could be heard below the ceiling tile. This was patched as much as possible to reduce the noise but the duct is still leaking.

Created By : National TAB

Assigned To : National TAB - Scott Springer

Status : Open

Originated Date : 04/18/2023 - Chance Russel - National TAB



Comfort. Under control.

CW 2999 - UTSW (DALLAS, TX)

Project Issue Information

Issue Name : VHR-3-23

Description : The duct is leaking a large amount of CFM. When dampening diffuser 2 down to tolerance the extra CFM is dumped into the ceiling instead of moving to diffuser 1.

Created By : National TAB

Assigned To : National TAB - Scott Springer

Status : Open

Originated Date : 04/10/2023 - Chance Russel - National TAB



Comfort. Under control.

CW 2999 - UTSW (DALLAS, TX)

Project Issue Information

Issue Name : VRH-3-1

Description : Even after closing off half of the floor the cfm for this unit is low. Also fully dampened diffuser 3 is still high.

Created By : National TAB

Assigned To : National TAB - Scott Springer

Status : Open

Originated Date : 04/10/2023 - Chance Russel - National TAB

Project Issue Response Details

- **04/20/2023 National TAB - Chance Russel**
 - SA Duct leading up to the unit is 6" not 8". Then the duct transfers to about 3 feet of 8" flex duct before connecting to the unit.



Comfort. Under control.

CW 2999 - UTSW (DALLAS, TX)

Project Issue Information

Issue Name : VRH-3-13

Description : With diffusers 1 and 3 fully dampened diffuser 3 is still too high and diffuser 2 is too low. This is most likely caused by the duct placement.

Created By : National TAB

Assigned To : National TAB - Scott Springer

Status : Open

Originated Date : 04/10/2023 - Chance Russel - National TAB



Comfort. Under control.

CW 2999 - UTSW (DALLAS, TX)

Project Issue Information

Issue Name : VRH-3-22

Description : Diffuser 4 does not have a damper and is thus extremely high on CFM. The diffusers is extremely close to the main duct as well.

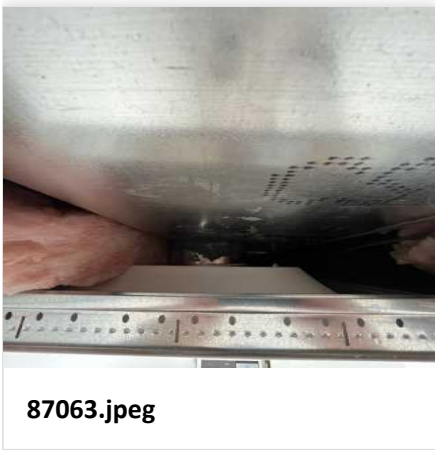
Created By : National TAB

Assigned To : National TAB - Scott Springer

Status : Open

Originated Date : 04/12/2023 - Chance Russel - National TAB

Project Issue File Details





Comfort. Under control.

CW 2999 - UTSW (DALLAS, TX)

Project Issue Information

Issue Name : VRH-3-27

Description : Fully dampened diffusers 5 and 6 are still high. Diffuser 2 is low due to the duct work branching off diffuser 1's duct.

Created By : National TAB

Assigned To : National TAB - Scott Springer

Status : Open

Originated Date : 04/07/2023 - Chance Russel - National TAB

Project Issue File Details



168088448637630061135...



Comfort. Under control.

CW 2999 - UTSW (DALLAS, TX)

Project Issue Information

Issue Name : VRH-3-28

Description : Fully dampered diffuser 4 and 5 are still high and 1 is still low.

Created By : National TAB

Assigned To : National TAB - Scott Springer

Status : Open

Originated Date : 04/06/2023 - Chance Russel - National TAB