

Report By:

**National TAB
1329 E. KEMPER ROAD
SUITE 4210
CINCINNATI, OH 45246**



**Report: Starr Electric (Charlotte, NC) TAB REPORT
Function: Test, Adjust, & Balance
Date: 05/18/2023**

**PROJECT
Starr Electric (Charlotte, NC)**

1808 Norland Road

Charlotte, NC 28205

Client

Action Mechanical Inc.

PO Box 7325

CHARLOTTE, NC 28241

National TAB

Project: Starr Electric (Charlotte, NC)

Table Of Contents

| Section | Page # |
|-----------------------|---------------|
| Certification | 3 |
| Equipment Calibration | 4 |
| Abbreviations | 5 |
| GRD Layout | 6 |
| Assets | 7 |



CERTIFICATION

PROJECT: Starr Electric (Charlotte, NC)

The data presented in this report is a record of system measurements and final adjustments that have been obtained in accordance with the current edition of the NEBB *Procedural Standards for Testing, Adjusting, and Balancing of Environmental Systems*. Any variances from design quantities, which exceed NEBB tolerances, are noted in the Test-Adjust-Balance Report Project Summary.

The air distribution system has been tested and balanced and final adjustments have been made in accordance with NEBB standards and the project specifications.

NEBB TAB FIRM: National TAB-Southeast

REGISTRATION NO: 3755

CERTIFIED BY: J. Scott Springer 23312

DATE: 5/18/2023

The hydronic distribution system has been tested and balanced and final adjustments have been made in accordance with NEBB standards and the project specifications.

NEBB TAB FIRM: National TAB-Southeast

REGISTRATION NO: 3086

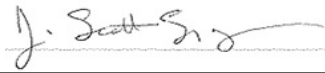
CERTIFIED BY: J. Scott Springer 23312

DATE:

Submitted and Certified by:

NEBB TAB FIRM: National TAB-Southeast

TAB PROFESSIONAL: J. Scott Springer

SIGNATURE: 

REGISTRATION NO: 3755 (NTAB) / 23312

CERTIFICATION EXP: 12/31/2023





National TAB

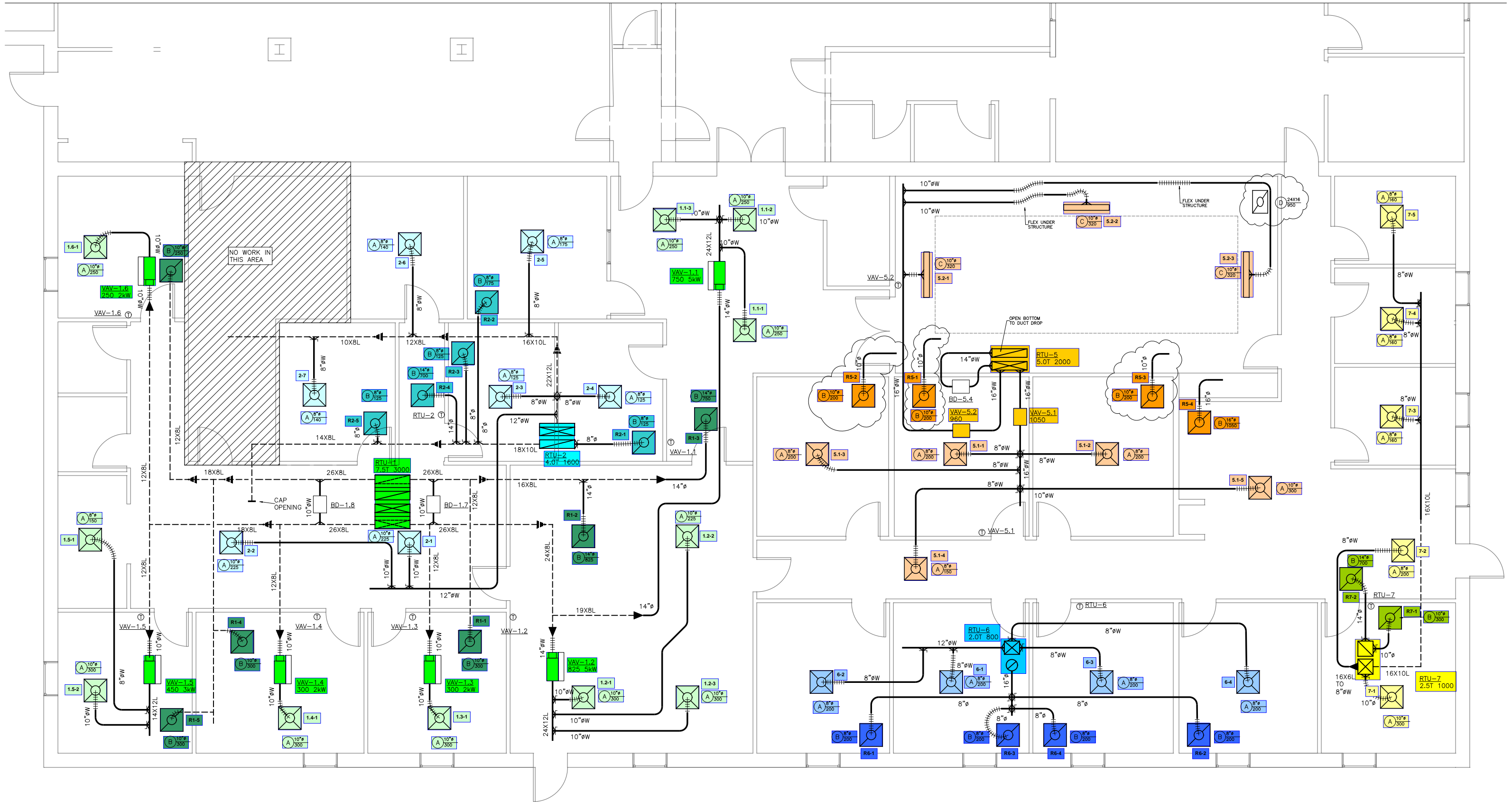
Testing, Adjusting, and Balancing Equipment



| Function | | Range | Minimum Accuracy | Instrument Information | Calibration Date | Date Due |
|-------------|-----------------------------------|--------------------------|--------------------------|--------------------------------------|------------------|------------|
| AIR | AIR PRESSURE | 0 in wg to 10 in wg | 2% +/- 0.001 in wg | Shortridge ADM 880C - S/N M05066 | 9/28/2022 | 9/28/2023 |
| | AIR VELOCITY INSTRUMENT | 50 fpm to 3900 fpm | +/- 5 % +/- 7 fpm | Shortridge ADM 880C - S/N M05066 | 9/28/2022 | 9/28/2023 |
| | DIRECT HOOD READING | 100 cfm to 2000 cfm | +/- 3 % +/- 7 cfm | Shortridge ADM 880C - S/N M05066 | 9/28/2022 | 9/28/2023 |
| TEMPERATURE | AIR METER | -20 F to 240 F | +/- .5 % 2 F | Cooper ATKINS - SRH77A S/N 081820093 | 10/12/2022 | 10/12/2023 |
| | AIR PROBE | -20 F to 240 F | +/- .5 % 2 F | Cooper ATKINS - PD1388 7-6 S/N 5028 | 10/12/2022 | 10/12/2023 |
| | IMMERSION METER | -20 F to 240 F | +/- .5 % 2 F | Cooper ATKINS - SRH77A S/N 081820093 | 10/12/2022 | 10/12/2023 |
| | IMMERSION PROBE | -20 F to 240 F | +/- .5 % 2 F | Cooper ATKINS - PD1388 7-6 S/N 1075 | 10/12/2022 | 10/12/2023 |
| | CONTACT METER | -20 F to 240 F | +/- .5 % 2 F | Cooper ATKINS - SRH77A S/N 081820093 | 10/12/2022 | 10/12/2023 |
| | CONTACT PROBE | -20 F to 240 F | +/- .5 % 2 F | Cooper ATKINS - PD1388 7-6 S/N 4011 | 10/12/2022 | 10/12/2023 |
| HUMIDITY | HUMIDITY PROBE | 10 % RH to 90 % RH | 3% of reading | Cooper ATKINS - SRH77A S/N 090315046 | 10/12/2022 | 10/12/2023 |
| ELECTRICAL | VOLTAGE MEASUREMENT | 0 VAC to 600 VAC | 2 % reading +/- 5 digits | Dwyer CM-1 - S/N 190800099 | 10/12/2022 | 10/12/2023 |
| | AMPERAGE MEASUREMENT | 0 Amperes to 100 Amperes | 2 % reading +/- 5 digits | Dwyer CM-1 - S/N 190800099 | 10/12/2022 | 10/12/2023 |
| ROTATION | ROTATION MEASUREMENT | 60 rpm to 5000 rpm | 2 % reading 2 rpm | Dwyer TAC-L - S/N S1100123 | 10/12/2022 | 10/12/2023 |
| HYDRONIC | PRESSURE MEASUREMENT | -30 in Hg to 200 psi | ±2% of reading +/- 1 psi | Dwyer 490W-6 - S/N 01L6NK | 6/29/2022 | 6/29/2023 |
| | DIFFERENTIAL PRESSURE MEASUREMENT | 0 psi - 80 psi | ±2% of reading +/- 1 psi | Dwyer 490W-6 - S/N 01L6NK | 6/29/2022 | 6/29/2023 |

Abbreviation List

| | |
|--|---|
| A = Area (ft ²) | S.F. = Service Factor |
| AHU = Air Handling Unit | SF = Supply Fan |
| A _k = Effective Area | SP = Static Pressure |
| BHP = Brake Horsepower (IP) HP | SR = Supply Register |
| Btu = British Thermal Unit | T = Temperature |
| Btu/h = Btuh = BTUH = BTU/Hour | T _{ma} = Mixed Air Temperature |
| CL = Center Distance (used in belt formula) | T _{oa} = Outside Air Temperature |
| CD = Ceiling Diffuser | T _{ra} = Return Air Temperature |
| CF = Correction Factor | H = Head (in wc, ft wc, psi) |
| CFM = Volumetric Flow: Cubic Feet Per Minute | h = Enthalpy |
| CO ₂ = Carbon Dioxide | HP = Horsepower |
| CO = Carbon Monoxide | hr = Hour |
| C _v = Flow Constant | K _v = Flow constant (SI) |
| d = Diameter (in.) IP | kW = Kilowatt = 1000 Watts |
| Δ = Difference or Change (Final - Initial) | LAT = Leaving Air Temperature |
| DB = Dry Bulb | lb = Pounds |
| EA = Exhaust Air | LWT = Leaving Water Temperature |
| EAT = Entering Air Temperature | ma = Mixed Air |
| EF = Exhaust Fan | MIN = Minimum |
| Eff = Efficiency | MAX = Maximum |
| EG = Exhaust Grille | N/A = Not Applicable |
| ESP = External Static Pressure | NA = No Access |
| EWT = Entering Water Temperature | NL = Not Listed |
| °F = Degrees Fahrenheit, °F | NPSHA = Net Positive Suction Head Available |
| FPB = Fan Powered Box | NS = Not Specified |
| FLA = Full Load Amps | OA = Outside Air |
| fpm = Feet per Minute (fpm) | OAT = Outside Air Temperature |
| ft = Foot | PD = Sheave Pitch Diameter |
| gal = Gallons | P.D. = Pressure Drop |
| GPM = Gallons Per Minute (GPM) | PF = Power Factor |
| h = Enthalpy (BTU/lb dry air) | SG = Supply Grille |
| P = Pressure | SR = Supply Register |
| ppm = parts per million | TP = Total Pressure |
| psi = Pounds Per Square Inch | T _{ra} = Return Air Temperature |
| psid = PSI Differential | TS = Tip Speed (fpm) IP, (m/s) SI |
| r = Radius (in) | TSP = Total Static Pressure |
| % _{ra} = % of Return Air | V = Velocity |
| RA = Return Air | VAV = Variable Air Volume |
| RAT = Return Air Temperature | VD = Volume Damper |
| RF = Return Fan | VFD = Variable Frequency Drive |
| RG = Return Grille | W = Watt |
| RH = Relative Humidity | WB = Wet Bulb |
| RPM = Revolutions Per Minute | wg = wc = water gauge = water column |
| RTU = Roof Top Unit | WHP = Water Horsepower (IP) |
| SA = Supply Air | ω = Humidity Ratio |



National TAB

Project: Starr Electric
Address: 1808 Norland Road Charlotte, NC

Asset: RTU-1

Area: OFFICE

| Unit Data | |
|----------------|-------------------|
| Manufacturer | CARRIER |
| Model Num | 50TM-008-P-501--- |
| Serial Num | 2403630411 |
| Configuration | VERTICAL |
| Num OA Filters | - |
| OA Filter Size | - |
| Num PreFilter | 4 |
| PreFilter Size | 20X16X2 |

| Test Data | | |
|--------------------|--------|-----------------|
| | Design | Actual |
| SF CFM | 2875 | 2312 |
| SF RPM | | 908 |
| RA CFM | 2475 | 1254 |
| OA CFM | 400 | - |
| RL VOLTAGE | | 206/208.4/208.2 |
| RL AMPERAGE | | 4.9/4.9/4.9 |
| OA Damper Position | | 0% OPEN |
| Brake Horsepower | | |

| Motor Data | |
|----------------|----------|
| Motor MFG | MARATHON |
| Frame | 56Y |
| Horsepower | NL |
| Motor RPM | 1725 |
| Phase | 3 |
| Rated Voltage | 208 |
| Rated Amperage | 5.2 |
| Service Factor | 1.15 |

| Performance Data | | |
|-------------------------|--------|--------|
| | Design | Actual |
| Fan Suction SP | | -1.02" |
| Fan Discharge SP | | 0.9" |
| Fan Total SP | | 1.92" |
| CX Coil PD * | | - |
| Pre Filter PD *Combined | | 0.2" |
| Total ESP | | 1.78" |

| Drive Data | |
|--------------------------|--------------|
| Motor Sheave Size / Bore | 1VL44/0.625" |
| Fan Sheave Size / Bore | AM74/1" |
| Belt CL Distance | 17.75" |
| No. Belts / Size | 1/AX51 |



National TAB

Project: Starr Electric
Address: 1808 Norland Road Charlotte, NC

Asset: AHU-1 VAV's

| Asset | Area Served | | Type | Size | Design Max CFM | Actual Max CFM | Design Min [1] CFM | Actual Min CFM | Ak (max) |
|---------|-------------|--|------|-------|----------------|----------------|--------------------|----------------|----------|
| VAV-1.1 | LOBBY | | A | 24X12 | 750 | 599 | 150 | 144 | |
| VAV-1.2 | LOBBY | | A | 24X12 | 825 | 650 | 165 | 171 | |
| VAV-1.3 | OFFICE | | A | 10 | 300 | 247 | 60 | 57 | |
| VAV-1.4 | OFFICE | | A | 10 | 300 | 239 | 60 | 59 | |
| VAV-1.5 | OFFICE | | A | 14X12 | 450 | 375 | 90 | 96 | |
| VAV-1.6 | OFFICE | | A | 10 | 250 | 202 | 50 | 51 | |
| | | | | | 2875 | 2312 | | | |

NOTES: [1] DESIGN MIN CFM IS 20% OF DESIGN MAX CFM



National TAB

Project: Starr Electric

Address: 1808 Norland Road Charlotte, NC

Asset: AHU-1 SGRD's

| Asset | Area Served | Type | Size | DESIGN CFM | Prelim CFM | FINAL CFM | % to design |
|----------------|-------------|------|------|------------|------------|------------|-------------|
| 1.1-1 | LOBBY | A | 10 | 250 | 159 | 202 | 0.81 |
| 1.1-2 | LOBBY | A | 10 | 250 | 0 | 201 | 0.80 |
| 1.1-3 | LOBBY | A | 10 | 250 | 155 | 196 | 0.78 |
| VAV-1.1 | | | | 750 | | 599 | 0.80 |
| 1.2-1 | LOBBY | A | 10 | 300 | 231 | 240 | 0.80 |
| 1.2-2 | LOBBY | A | 10 | 225 | 201 | 174 | 0.77 |
| 1.2-3 | LOBBY | A | 10 | 300 | 188 | 236 | 0.79 |
| VAV-1.2 | | | | 825 | | 650 | 0.79 |
| 1.3-1 | OFFICE | A | 10 | 300 | 315 | 247 | 0.82 |
| VAV-1.3 | | | | 300 | | 247 | 0.82 |
| 1.4-1 | OFFICE | A | 10 | 300 | 366 | 239 | 0.80 |
| VAV-1.4 | | | | 300 | | 239 | 0.80 |
| 1.5-1 | DATA ROOM | A | 8 | 150 | 154 | 135 | 0.90 |
| 1.5-2 | OFFICE | A | 10 | 300 | 218 | 240 | 0.80 |
| VAV-1.5 | | | | 450 | | 375 | 0.83 |
| 1.6-1 | OFFICE | A | 10 | 250 | 277 | 202 | 0.81 |
| VAV-1.6 | | | | 250 | | 202 | 0.81 |

Asset: AHU-1 EGRD's

| Asset | Area Served | Type | Size | DESIGN CFM | Prelim CFM | FINAL CFM | % to design |
|--------------|-------------|------|------|-------------|------------|-------------|-------------|
| R1-1 | OFFICE | B | 10 | 300 | 225 | 165 | 0.55 |
| R1-2 | LOBBY | B | 14 | 825 | 325 | 377 | 0.46 |
| R1-3 | LOBBY | B | 14 | 750 | 226 | 278 | 0.37 |
| R1-4 | OFFICE | B | 10 | 300 | 149 | 168 | 0.56 |
| R1-5 | OFFICE | B | 10 | 300 | 138 | 152 | 0.51 |
| R1-6 | OFFICE | B | 10 | 250 | 191 | 190 | 0.76 |
| RTU-1 | | | | 2725 | 1254 | 1330 | 0.49 |

National TAB

Project: Starr Electric
Address: 1808 Norland Road Charlotte, NC

Asset: RTU-2

Area: OFFICE

| Unit Data | |
|----------------|------------------|
| Manufacturer | CARRIER |
| Model Num | 50TFF005-A-511-- |
| Serial Num | 1903G20127 |
| Configuration | VERTICAL |
| Num OA Filters | - |
| OA Filter Size | - |
| Num PreFilter | 2 |
| PreFilter Size | 16X25X2 |

| Test Data | | |
|--------------------|--------|--------|
| | Design | Actual |
| SF CFM | 1600 | 1139 |
| SF RPM | | 1024 |
| RA CFM | 1250 | 1008 |
| OA CFM | 350 | - |
| RL VOLTAGE | | 208.4 |
| RL AMPERAGE | | 2.4 |
| OA Damper Position | | - |
| Brake Horsepower | | 0.49 |

| Motor Data | |
|----------------|-----------|
| Motor MFG | GE MOTORS |
| Frame | NL |
| Horsepower | 1 |
| Motor RPM | 1620 |
| Phase | 1 |
| Rated Voltage | 208 |
| Rated Amperage | 4.9 |
| Service Factor | 1 |

| Performance Data | | |
|-------------------------|--------|--------|
| | Design | Actual |
| Fan Suction SP | | -0.5" |
| Fan Discharge SP | | 0.25" |
| Fan Total SP | | 0.75" |
| CX Coil PD * | | - |
| Pre Filter PD *Combined | | 0.15" |
| Total ESP | | 0.60" |

| Drive Data | |
|--------------------------|---------------|
| Motor Sheave Size / Bore | 1VL34/0.5" |
| Fan Sheave Size / Bore | 4.375"/0.625" |
| Belt CL Distance | 13.375" |
| No. Belts / Size | 1/A36 |



National TAB

Project: Starr Electric
Address: 1808 Norland Road Charlotte, NC

Asset: RTU-2 SGRD's

| Asset | Area Served | Type | Size | DESIGN CFM | Prelim CFM | FINAL CFM | % to design |
|------------------|-------------|------|------|-------------|------------|-------------|-------------|
| 2-1 | RECEPTION | A | 10 | 225 | 227 | 225 | 1.00 |
| 2-2 | RECEPTION | A | 10 | 225 | 214 | 246 | 1.09 |
| 2-3 | OFFICE | A | 8 | 125 | 201 | 119 | 0.95 |
| 2-4 | OFFICE | A | 8 | 125 | 206 | 125 | 1.00 |
| 2-5 | OFFICE | A | 8 | 175 | 170 | 186 | 1.06 |
| 2-6 | OFFICE | A | 8 | 140 | 118 | 132 | 0.94 |
| 2-7 | OFFICE | A | 8 | 140 | 96 | 103 | 0.74 |
| RTU-2 [1] | | | | 1155 | | 1136 | 0.98 |

NOTES: [1] SUPPLY DUCT CONTINUES INTO A "NO WORK" AREA. ASSUME ADDITIONAL SGRD's.

Asset: RTU-2 EGRD's

| Asset | Area Served | Type | Size | DESIGN CFM | Prelim CFM | FINAL CFM | % to design |
|--------------|-------------|------|------|-------------|------------|------------|-------------|
| R2-1 | OFFICE | B | 8 | 125 | 250 | 110 | 0.88 |
| R2-2 | OFFICE | B | 8 | 175 | 124 | 150 | 0.86 |
| R2-3 | OFFICE | B | 8 | 125 | 167 | 106 | 0.85 |
| R2-4 | HALLWAY | B | 14 | 700 | 441 | 525 | 0.75 |
| R2-5 | OFFICE | B | 8 | 125 | 78 | 106 | 0.85 |
| RTU-2 | | | | 1250 | | 997 | 0.80 |



National TAB

Project: Starr Electric
Address: 1808 Norland Road Charlotte, NC

Asset: RTU-5

Area: OFFICE & CONFERENCE

| Unit Data | |
|----------------|---------------|
| Manufacturer | CARRIER |
| Model Num | 50TJ-006--501 |
| Serial Num | 3598G21685 |
| Configuration | VERTICAL |
| Num OA Filters | 1 |
| OA Filter Size | 25X8X1 |
| Num PreFilter | 2 |
| PreFilter Size | 15.5X25X2 |

| Test Data | | |
|--------------------|--------|-------------|
| | Design | Actual |
| SF CFM | 2010 | 1240 |
| SF RPM | | DD |
| RA CFM | 1650 | - |
| OA CFM | 360 | - |
| RL VOLTAGE | | 207.4 |
| RL AMPERAGE | | 4.2 |
| OA Damper Position | | 0.625" OPEN |
| Brake Horsepower | | 0.71 |

| Motor Data | |
|----------------|------|
| Motor MFG | NA |
| Frame | NL |
| Horsepower | 1 |
| Motor RPM | 1040 |
| Phase | 1 |
| Rated Voltage | 208 |
| Rated Amperage | 5.9 |
| Service Factor | 1 |

| Performance Data | | |
|-------------------------|--------|--------|
| | Design | Actual |
| Fan Suction SP | | -0.82" |
| Fan Discharge SP | | 0.29" |
| Fan Total SP | | 1.11" |
| CX Coil PD * | | - |
| Pre Filter PD *Combined | | 0.4" |
| Total ESP | | 0.71" |



National TAB

Project: Starr Electric
Address: 1808 Norland Road Charlotte, NC

Asset: AHU-5 VAV's

| Asset | Area Served | | Type | Size | Design Max CFM | Actual Max CFM | Design Min [1] CFM | Actual Min CFM | Ak (max) |
|---------|-------------|--|------|------|----------------|----------------|--------------------|----------------|----------|
| VAV-5.1 | OFFICE | | A | 16 | 1050 | 636 | 210 | 217 | |
| VAV-5.2 | CONF RM | | LD | 16 | 960 | 604 | 192 | 187 | |
| | | | | | 2010 | | | | |

NOTES: [1] DESIGN MIN CFM IS 20% OF DESIGN MAX CFM



National TAB

Project: Starr Electric

Address: 1808 Norland Road Charlotte, NC

Asset: RTU-5 SGRD's

| Asset | Area Served | Type | Size | DESIGN CFM | Prelim CFM | FINAL CFM | % to design |
|----------------|-------------|------|------|-------------|------------|------------|-------------|
| 5.1-1 | OFFICE | A | 8 | 200 | 173 | 120 | 0.60 |
| 5.1-2 | OFFICE | A | 8 | 200 | 125 | 123 | 0.62 |
| 5.1-3 | OFFICE | A | 8 | 200 | 179 | 119 | 0.60 |
| 5.1-4 | HALLWAY | A | 8 | 150 | 161 | 88 | 0.59 |
| 5.1-5 | RECEPTION | A | 10 | 300 | 185 | 186 | 0.62 |
| VAV-5.1 | | | | 1050 | | 636 | 0.61 |
| 5.2-1 | | C | 10 | 320 | 160 | 215 | 0.67 |
| 5.2-2 | | C | 10 | 320 | 130 | 192 | 0.60 |
| 5.2-3 | | C | 10 | 320 | 129 | 197 | 0.62 |
| VAV-5.2 | | | | 960 | | 604 | 0.63 |

Asset: RTU-5 EGRD's

| Asset | Area Served | Type | Size | DESIGN CFM | Prelim CFM | FINAL CFM | % to design |
|--------------|-------------|------|------|-------------|------------|-----------|-------------|
| R1-1 | OFFICE | B | 10 | 200 | | | 0.00 |
| R1-2 | OFFICE | B | 10 | 200 | | | 0.00 |
| R1-3 | OFFICE | B | 10 | 200 | | | 0.00 |
| R1-4 | OFFICE | B | 16 | 1050 | | | 0.00 |
| RTU-5 | | | | 1650 | | 0 | 0.00 |

NOTES: RETURN IS TAKEN FROM PLENUM ABOVE CEILING



National TAB

Project: Starr Electric
Address: 1808 Norland Road Charlotte, NC

Asset: RTU-6

Area: OFFICE

| Unit Data | |
|----------------|---------------|
| Manufacturer | CARRIER |
| Model Num | 50GS-024--301 |
| Serial Num | 1803011853 |
| Configuration | HORIZONTAL |
| Num OA Filters | - |
| OA Filter Size | - |
| Num PreFilter | NA |
| PreFilter Size | NA |

| Test Data | | |
|--------------------|--------|--------|
| | Design | Actual |
| SF CFM | 800 | 688 |
| SF RPM | | DD |
| RA CFM | 800 | 607 |
| OA CFM | 0 | 0 |
| RL VOLTAGE | | 207.7 |
| RL AMPERAGE | | 1.8 |
| OA Damper Position | | - |
| Brake Horsepower | | - |

| Motor Data | |
|----------------|-----|
| Motor MFG | NA |
| Frame | NA |
| Horsepower | NA |
| Motor RPM | NA |
| Phase | 1 |
| Rated Voltage | 208 |
| Rated Amperage | 2 |
| Service Factor | 1 |

| Performance Data | | |
|-------------------------|--------|--------|
| | Design | Actual |
| Fan Suction SP | | -0.51" |
| Fan Discharge SP | | 0.19" |
| Fan Total SP | | 0.7" |
| CX Coil PD * | | - |
| Pre Filter PD *Combined | | 0.25" |
| Total ESP | | 0.45" |



National TAB

Project: Starr Electric
Address: 1808 Norland Road Charlotte, NC

Asset: RTU-6 SGRD's

| Asset | Area Served | Type | Size | DESIGN CFM | Prelim CFM | FINAL CFM | % to design |
|--------------|-------------|------|------|------------|------------|------------|-------------|
| 6-1 | OFFICE | A | 8 | 200 | 165 | 165 | 0.83 |
| 6-2 | OFFICE | A | 8 | 200 | 171 | 171 | 0.86 |
| 6-3 | OFFICE | A | 8 | 200 | 179 | 179 | 0.90 |
| 6-4 | OFFICE | A | 8 | 200 | 173 | 173 | 0.87 |
| RTU-6 | | | | 800 | | 688 | 0.86 |

Asset: RTU-6 EGRD's

| Asset | Area Served | Type | Size | DESIGN CFM | Prelim CFM | FINAL CFM | % to design |
|--------------|-------------|------|------|------------|------------|------------|-------------|
| R6-1 | OFFICE | B | 8 | 200 | 156 | 156 | 0.78 |
| R6-2 | OFFICE | B | 8 | 200 | 138 | 138 | 0.69 |
| R6-3 | OFFICE | B | 8 | 200 | 154 | 154 | 0.77 |
| R6-4 | OFFICE | B | 8 | 200 | 149 | 149 | 0.75 |
| RTU-6 | | | | 800 | | 597 | 0.75 |

National TAB

Project: Starr Electric
Address: 1808 Norland Road Charlotte, NC

Asset: RTU-7

Area: OFFICES

| UNIT DATA | |
|------------------|---------------|
| Manufacturer | CARRIER |
| Model Num | 50JS-030--301 |
| Serial Num | 3213G11529 |
| Configuration | HORIZONTAL |
| Num OA Filters | - |
| OA Filter Size | - |
| Num PreFilter | 2 |
| PreFilter Size | 19.5X25X2 |
| PreFilter Size 2 | 19.5X9.5X2 |

| Test Data | | |
|--------------------|--------|--------|
| | Design | Actual |
| SF CFM | 1000 | 855 |
| SF RPM | | - |
| RA CFM | 1000 | 733 |
| OA CFM | 0 | - |
| RL VOLTAGE | | 207.3 |
| RL AMPERAGE | | 1.7 |
| OA Damper Position | | - |
| Brake Horsepower | | - |

| Motor Data | |
|----------------|-----|
| Motor MFG | NA |
| Frame | NA |
| Horsepower | NA |
| Motor RPM | NA |
| Phase | 1 |
| Rated Voltage | 208 |
| Rated Amperage | 2 |
| Service Factor | 1 |

| Performance Data | | |
|-------------------------|--------|--------|
| | Design | Actual |
| Fan Suction SP | | -0.34 |
| Fan Discharge SP | | 0.15" |
| Fan Total SP | | 0.49" |
| CX Coil PD * | | - |
| Pre Filter PD *Combined | | 0.27" |
| Total ESP | | 0.22" |



National TAB

Project: Starr Electric
Address: 1808 Norland Road Charlotte, NC

Asset: RTU-7 SGRD's

| Asset | Area Served | Type | Size | DESIGN CFM | Prelim CFM | FINAL CFM | % to design |
|--------------|-------------|------|------|------------|------------|------------|-------------|
| 7-1 | OFFICE | A | 10 | 300 | 204 | 204 | 0.68 |
| 7-2 [1] | RECEPTION | A | 8 | 200 | 235 | 235 | 1.18 |
| 7-3 | OFFICE | A | 8 | 160 | 136 | 136 | 0.85 |
| 7-4 | OFFICE | A | 8 | 160 | 130 | 130 | 0.81 |
| 7-5 | OFFICE | A | 8 | 160 | 150 | 150 | 0.94 |
| RTU-7 | | | | 980 | | 855 | 0.87 |

Asset: RTU-7 EGRD's

| Asset | Area Served | Type | Size | DESIGN CFM | Prelim CFM | FINAL CFM | % to design |
|--------------|-------------|------|------|-------------|------------|------------|-------------|
| R7-1 | OFFICE | B | 10 | 300 | 251 | 251 | 0.84 |
| R7-2 | RECEPTION | B | 14 | 700 | 482 | 482 | 0.69 |
| RTU-7 | | | | 1000 | | 733 | 0.73 |

NOTES: [1] UNABLE TO REACH DAMPER FOR 7-2