

Report By:

National TAB
1329 E. KEMPER ROAD
SUITE 4210
CINCINNATI, OH 45246



Report: TAB REPORT
Function: Test, Adjust, & Balance
Date: 03/25/2025
Completed By: National TAB

PROJECT
Bakery Express (Florence, KY)

800 Dixon Dr

Florence, KY 41022

Client

Northern Kentucky Heating & Cooling

3213 Rector Road

Morning View, KY 41063

National TAB

Project: Bakery Express (Florence, KY)

Table Of Contents

Section	Page #
Certification	3
Equipment Calibrations	4
Abbreviations	5
GRD	6
OFFICE GRD	15
AHU-DUAL FAN	16
AHU/RTU	20
FAN - Exhaust	38



CERTIFICATION



PROJECT: Bakery Express (Florence, KY)

The data presented in this report is a record of system measurements and final adjustments that have been obtained in accordance with the current edition of the NEBB *Procedural Standards for Testing, Adjusting, and Balancing of Environmental Systems*. Any variances from design quantities, which exceed NEBB tolerances, are noted in the Test-Adjust-Balance Report Project Summary.

The air distribution system has been tested and balanced and final adjustments have been made in accordance with NEBB standards and the project specifications.

NEBB TAB FIRM: National TAB

REGISTRATION NO: 3629

CERTIFIED BY: Joe Hertenstein

DATE: 3/25/2025

The hydronic distribution system has been tested and balanced and final adjustments have been made in accordance with NEBB standards and the project specifications.

NEBB TAB FIRM: National TAB

REGISTRATION NO: 3629


CERTIFIED BY: Joe Hertenstein

DATE: _____

Submitted and Certified by:

NEBB TAB FIRM: National TAB

TAB PROFESSIONAL: Joe Hertenstein

SIGNATURE: 

REGISTRATION NO: 3629

CERTIFICATION EXP: 12/31/2025





National TAB



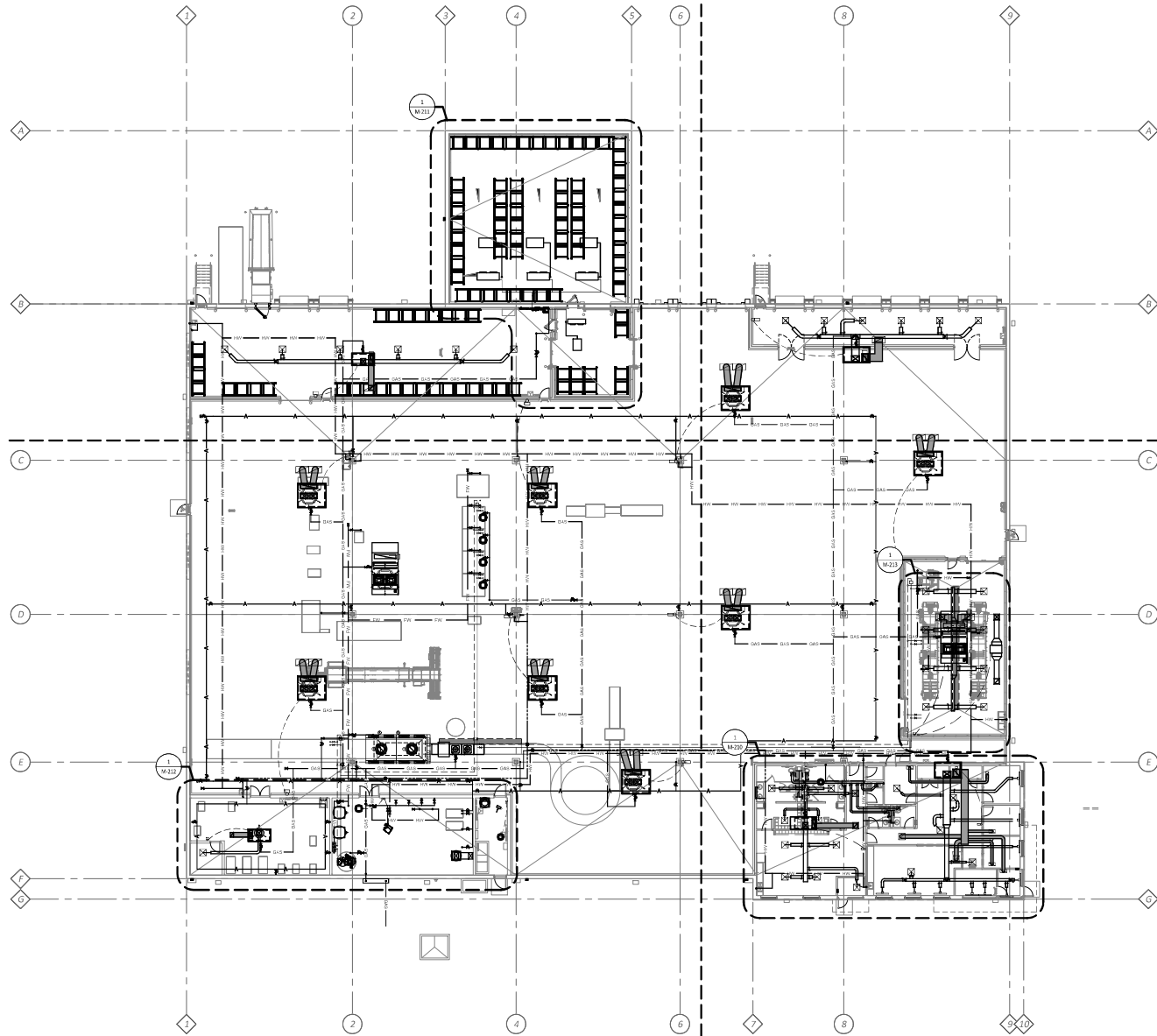
Testing, Adjusting, and Balancing Equipment

INTELLIGENCE

Function		Range	Minimum Accuracy	Instrument Information	Calibration Date	Date Due
AIR	AIR PRESSURE	0 in wg to 10 in wg	2% +/- 0.001 in wg	Evergreen S-PVF-1 S/N 24D-00271	4/9/2024	4/9/2025
	AIR VELOCITY INSTRUMENT	50 fpm to 3900 fpm	+/- 5 % +/- 7 fpm	Evergreen S-PVF-1 S/N 24D-00271	4/9/2024	4/9/2025
	DIRECT HOOD READING	100 cfm to 2000 cfm	+/- 5 % +/- 7 cfm	Evergreen S-PVF-1 S/N 24D-00271	4/9/2024	4/9/2025
TEMPERATURE	AIR METER	-20 F to 240 F	+/- .5 % 2 F	Cooper ATKINS - SRH77A S/N 071118034	7/12/2024	7/12/2025
	AIR PROBE	-20 F to 240 F	+/- .5 % 2 F	Cooper ATKINS - PD1388 7-6 S/N 5028	7/12/2024	7/12/2025
	IMMERSION METER	-20 F to 240 F	+/- .5 % 2 F	Cooper ATKINS - SRH77A S/N 071118034	7/12/2024	7/12/2025
	IMMERSION PROBE	-20 F to 240 F	+/- .5 % 2 F	Cooper ATKINS - PD1388 7-6 S/N 1075	7/12/2024	7/12/2025
	CONTACT METER	-20 F to 240 F	+/- .5 % 2 F	Cooper ATKINS - SRH77A S/N 071118034	7/12/2024	7/12/2025
	CONTACT PROBE	-20 F to 240 F	+/- .5 % 2 F	Cooper ATKINS - PD1388 7-6 S/N 4011	7/12/2024	7/12/2025
HUMIDITY	HUMIDITY PROBE	10 % RH to 90 % RH	3% of reading	Cooper ATKINS - SRH77A S/N 071118034	7/12/2024	7/12/2025
ELECTRICAL	VOLTAGE MEASUREMENT	0 VAC to 600 VAC	2 % reading +/- 5 digits	Fluke 373 True RMS, S/N: 33290686	7/12/2024	7/12/2025
	AMPERAGE MEASUREMENT	0 Amperes to 100 Amperes	2 % reading +/- 5 digits	Fluke 373 True RMS, S/N: 33290686	7/12/2024	7/12/2025
ROTATION	ROTATION MEASUREMENT	60 rpm to 5000 rpm	2 % reading 2 rpm	SHIMPO DT-207LR S/N: D1530081R	7/12/2024	7/12/2025
HYDRONIC	PRESSURE MEASUREMENT	-30 in Hg to 200 psi	±2% of reading +/- 1 psi	Alnor HM675 S/N: 72214041	5/2024	5/2025
	DIFFERENTIAL PRESSURE MEASUREMENT	0 psi - 80 psi	±2% of reading +/- 1 psi	Alnor HM675 S/N: 72214041	5/2024	5/2025

Abbreviation List

A = Area (ft ²)	S.F. = Service Factor
AHU = Air Handling Unit	SF = Supply Fan
A _k = Effective Area	SP = Static Pressure
BHP = Brake Horsepower (IP) HP	SR = Supply Register
Btu = British Thermal Unit	T = Temperature
Btu/h = Btuh = BTUH = BTU/Hour	T _{ma} = Mixed Air Temperature
CL = Center Distance (used in belt formula)	T _{oa} = Outside Air Temperature
CD = Ceiling Diffuser	T _{ra} = Return Air Temperature
CF = Correction Factor	H = Head (in wc, ft wc, psi)
CFM = Volumetric Flow: Cubic Feet Per Minute	h = Enthalpy
CO ₂ = Carbon Dioxide	HP = Horsepower
CO = Carbon Monoxide	hr = Hour
C _v = Flow Constant	K _v = Flow constant (SI)
d = Diameter (in.) IP	kW = Kilowatt = 1000 Watts
Δ = Difference or Change (Final - Initial)	LAT = Leaving Air Temperature
DB = Dry Bulb	lb = Pounds
EA = Exhaust Air	LWT = Leaving Water Temperature
EAT = Entering Air Temperature	ma = Mixed Air
EF = Exhaust Fan	MIN = Minimum
Eff = Efficiency	MAX = Maximum
EG = Exhaust Grille	N/A = Not Applicable
ESP = External Static Pressure	NA = No Access
EWT = Entering Water Temperature	NL = Not Listed
°F = Degrees Fahrenheit, °F	NPSHA = Net Positive Suction Head Available
FPB = Fan Powered Box	NS = Not Specified
FLA = Full Load Amps	OA = Outside Air
fpm = Feet per Minute (fpm)	OAT = Outside Air Temperature
ft = Foot	PD = Sheave Pitch Diameter
gal = Gallons	P.D. = Pressure Drop
GPM = Gallons Per Minute (GPM)	PF = Power Factor
h = Enthalpy (BTU/lb dry air)	SG = Supply Grille
P = Pressure	SR = Supply Register
ppm = parts per million	TP = Total Pressure
psi = Pounds Per Square Inch	T _{ra} = Return Air Temperature
psid = PSI Differential	TS = Tip Speed (fpm) IP, (m/s) SI
r = Radius (in)	TSP = Total Static Pressure
% _{ra} = % of Return Air	V = Velocity
RA = Return Air	VAV = Variable Air Volume
RAT = Return Air Temperature	VD = Volume Damper
RF = Return Fan	VFD = Variable Frequency Drive
RG = Return Grille	W = Watt
RH = Relative Humidity	WB = Wet Bulb
RPM = Revolutions Per Minute	wg = wc = water gauge = water column
RTU = Roof Top Unit	WHP = Water Horsepower (IP)
SA = Supply Air	ω = Humidity Ratio



OVERALL MECHANICAL PLAN
SCALE: 1/16" = 1'-0"



GOOT DESIGN
10020 Aurora-Hudson Rd.
Shelton, Ohio 44241
PH: (330) 528-3500
FX: (330) 528-0008
www.gootdesign.com

Drawn By DBT
Checked By DBT
Project Number 23-005-48

NOTICE
THIS ARCHITECTURAL AND ENGINEERING DOCUMENT IS PREPARED BY CONFERENCE. NO USE OR DISTRIBUTION MAY BE MADE WITHOUT THE WRITTEN CONSENT OF THE ARCHITECT. ALL RIGHTS ARE RESERVED BY THE ARCHITECT.
REVISIONS REFLECTED IN THESE DRAWINGS INCLUDE CHANGES TO CONTRACT PERMIT REQUIREMENTS AND PROJECT CHANGE ORDER PROVIDED FOR ALL CHANGES. THESE CHANGES ARE NOT TO BE SCALE RED.

DATES AND REVISIONS
12-15-2023
FOUNDATION PERMIT
01-22-2024
BUILDING PERMIT

GEIS COMPANIES
10020 Aurora-Hudson Rd
Shelton, Ohio 44241
PH: (330) 528-3500
FX: (330) 528-0008
www.geisco.net

BAKERY EXPRESS
8000 DIXON DRIVE
BOONE COUNTY
FLORENCE, KENTUCKY

OVERALL
MECHANICAL PLAN
M-100





g GOOD DESIGN
10020 Aurora-Hudson Rd
Sheetsboro, Ohio 44241
PH: (330) 528-3500
FX: (330) 528-0008
www.gooddesign.com

Drawn By: DBT
Checked By: DBT
Project Number: 23-005-048

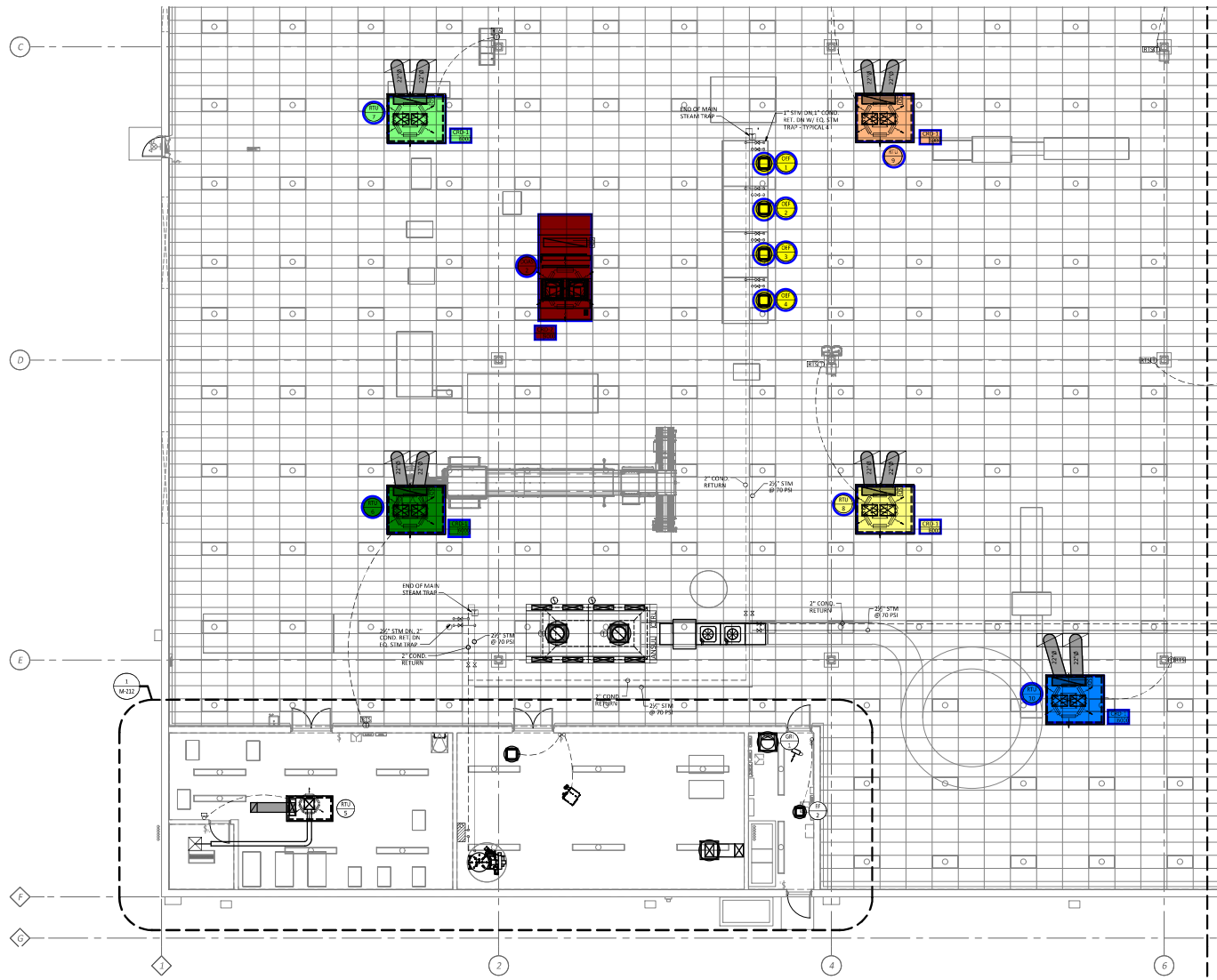
NOTICE
THIS ARCHITECTURAL AND ENGINEERING DRAWING IS FOR CONSTRUCTION USE ONLY. NO USE OR REPRODUCTION MAY BE MADE WITHOUT THE WRITTEN CONSENT OF THE ARCHITECT. ALL RIGHTS ARE RESERVED FOR THE ARCHITECT.
REVISIONS REFLECTED IN THESE DRAWINGS FROM ANY CHANGES TO A CONTRACT FIRST AGREEMENT OR PROVIDED FOR ALL CHANGES. THESE CHANGES ARE NOT TO BE MADE.

DATES AND REVISIONS	
12-15-2023	FOUNDATION PERMIT
01-22-2024	BUILDING PERMIT

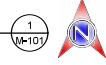
GEIS COMPANIES
10020 Aurora-Hudson Rd
Sheetsboro, Ohio 44241
PH: (330) 528-3500
FX: (330) 528-0008
www.geisco.net

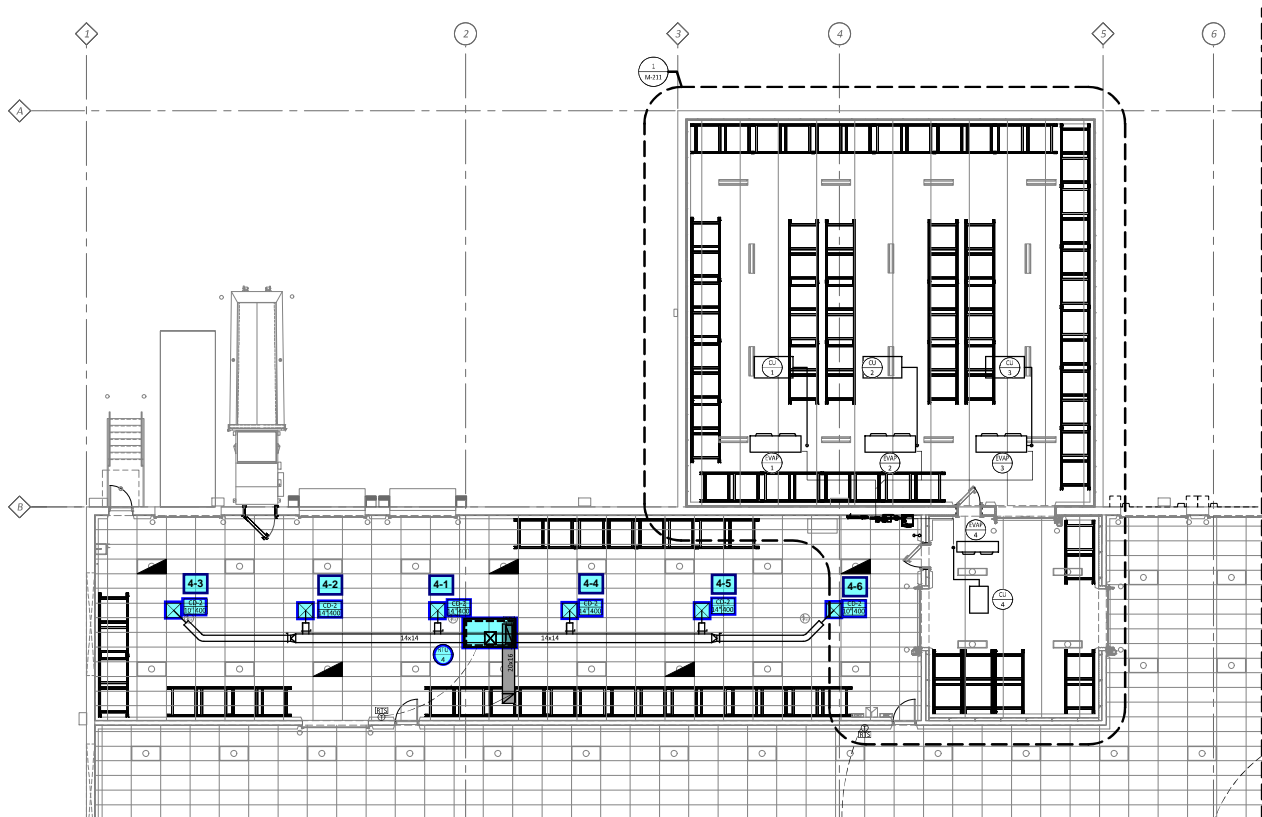
BAKERY EXPRESS
8000 DIXON DRIVE
BOONE COUNTY
FLORENCE, KENTUCKY

ENLARGED BAKERY MECHANICAL PLAN
M-101



ENLARGED BAKERY MECHANICAL PLAN
SCALE: 1/8" = 1'-0"





ENLARGED BAKERY MECHANICAL PLAN
SCALE: 1/8" = 1'-0"




 1/22/24

 10020 Aurora-Hudson Rd.
 Streetsboro, Ohio 44224
 PH: (330) 528-3500
 FX: (330) 528-0008
 www.gdotdesign.com
 Drawn By DBT
 Checked By DBT
 Project Number 23-005-48

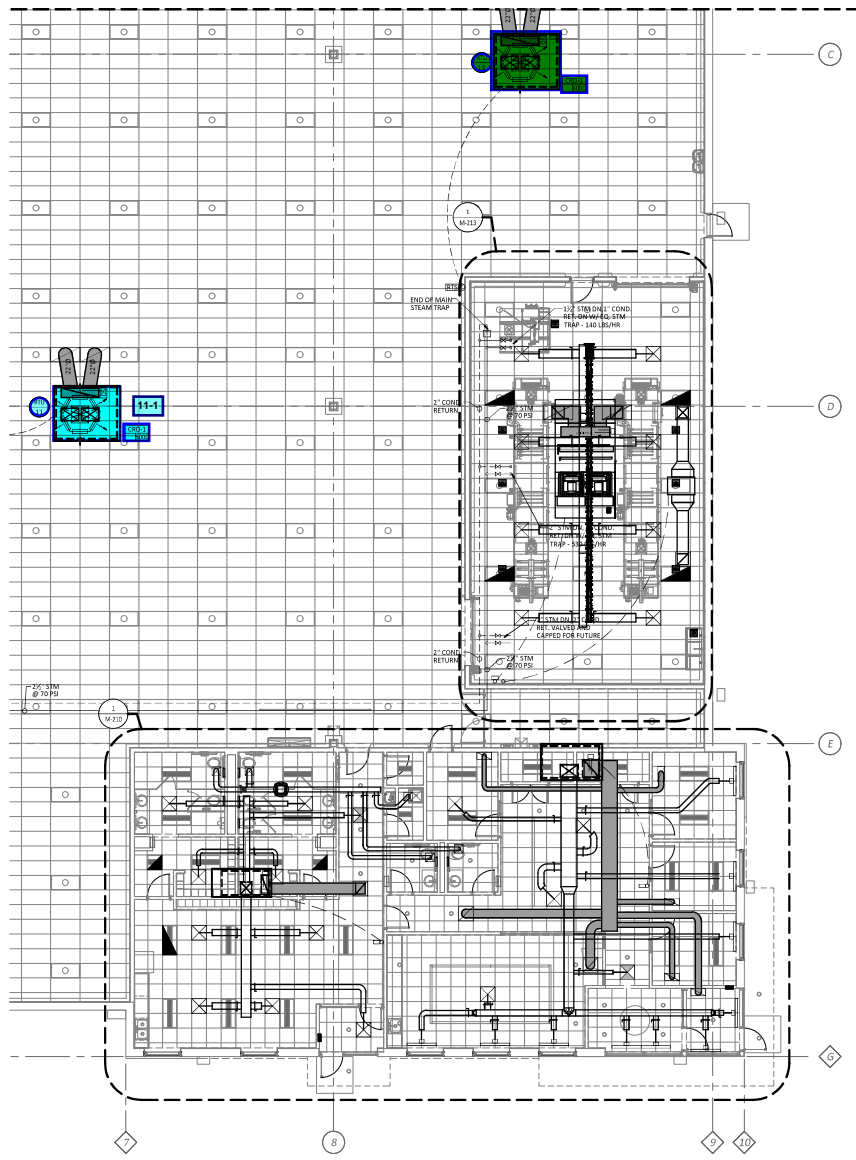
NOTICE
 THIS ARCHITECTURAL AND ENGINEERING DOCUMENT IS PREPARED BY GDOT DESIGN FOR THE CLIENT'S USE ONLY. NO USE OR REPRODUCTION MAY BE MADE WITHOUT THE WRITTEN CONSENT OF THE ARCHITECT. ALL RIGHTS ARE RESERVED.
 REVISIONS REFLECTED IN THESE DRAWINGS INVOLVE CHANGES TO CONTRACT PERMIT REQUIREMENTS. PROJECTS FOR ALL CHANGES, THESE CHANGES ARE NOT BY THE SAME SET.
DATES AND REVISIONS
 12-15-2023 FOUNDATION PERMIT
 01-22-2024 BUILDING PERMIT


GEIS COMPANIES
 10020 Aurora-Hudson Rd
 Streetsboro, Ohio 44224
 PH: (330) 528-3500
 FX: (330) 528-0008
 www.geisco.net

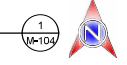
BAKERY EXPRESS
 8000 DIXON DRIVE
 BOONE COUNTY
 FLORENCE, KENTUCKY

ENLARGED BAKERY
 MECHANICAL PLAN
M-102

1/23/2025 Bakery Express CONTRIBUTION DOCUMENT 15_00_000150 ENLARGED MECHANICAL PLAN Rev 01/22/2025 15:00:00 05/23



ENLARGED MECHANICAL PLAN
 SCALE: 1/8" = 1'-0"



GOOT DESIGN
 10020 Aurora-Hudson Rd.
 Streetsboro, Ohio 44241
 PH: (330) 528-3500
 FX: (330) 528-0008
 www.gootdesign.com

Drawn By DBT
 Checked By DBT
 Project Number 23-005-48

NOTICE
 THIS ARCHITECTURAL AND ENGINEERING DOCUMENT IS PREPARED BY CONFERENCE. NO USE OR DISSEMINATION MAY BE MADE WITHOUT THE WRITTEN CONSENT OF THE ARCHITECT. ALL RIGHTS ARE HEREBY EXPRESSLY RESERVED.
 REVISIONS REFLECTED IN THESE DRAWINGS SHALL BE CHANGES TO CONTRACT PERMIT REQUIREMENTS. PROJECT CHANGES PROCESSED FOR ALL CHANGES. THESE CHANGES ARE NOT IN THE SAME RED.

DATES AND REVISIONS	
12-15-2023	FOUNDATION PERMIT
01-22-2024	BUILDING PERMIT

GEIS COMPANIES
 10020 Aurora-Hudson Rd
 Streetsboro, Ohio 44241
 PH: (330) 528-3500
 FX: (330) 528-0008
 www.geisco.net

BAKERY EXPRESS
 8000 DIXON DRIVE
 BOONE COUNTY
 FLORENCE, KENTUCKY

ENLARGED
 MECHANICAL PLAN
M-104





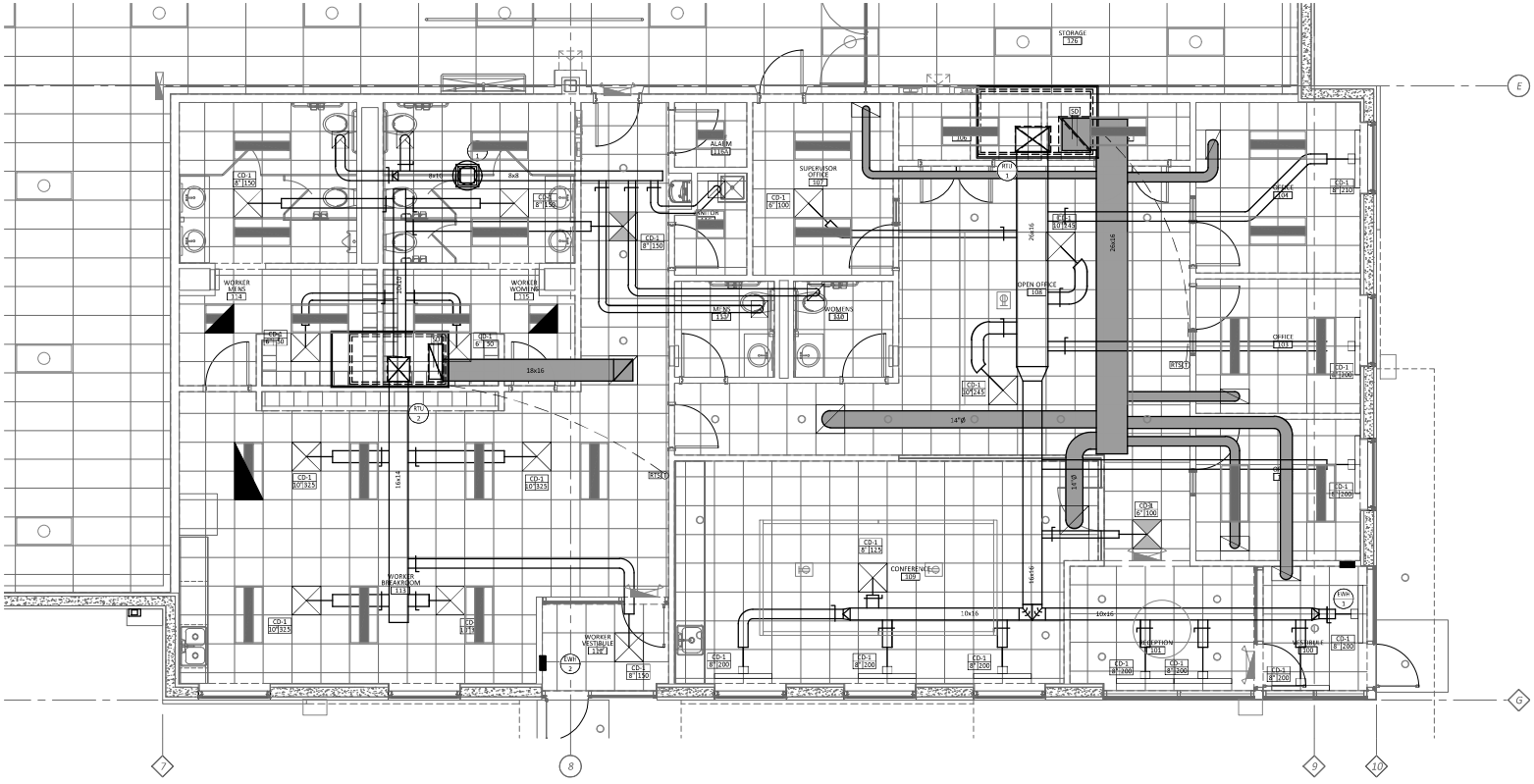
g GDOT DESIGN
 10020 Aurora-Hudson Rd.
 Streetsboro, Ohio 44224
 PH: (330) 528-3500
 FX: (330) 528-0008
 www.gdotdesign.com

Drawn By DBT
 Checked By DBT
 Project Number 23-005-48

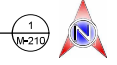
NOTICE
 THIS ARCHITECTURAL AND ENGINEERING CONTRACT IS A PROFESSIONAL SERVICE. NO USE OR REPRODUCTION MAY BE MADE WITHOUT THE WRITTEN CONSENT OF THE ARCHITECT. ALL RIGHTS ARE HEREBY EXPRESSLY RESERVED.
 REVISIONS REFLECTED IN THESE DRAWINGS THROUGH CHANGES TO CONTRACT FIRST THROUGH FOUR. CONTRACTOR SHALL VERIFY ALL PROVISIONS FOR ALL CHANGES. THESE CHANGES ARE NOT TO BE MADE.

DATES AND REVISIONS
 12-15-2023 FOUNDATION PERMIT
 01-22-2024 BUILDING PERMIT

See Office GRD



ENLARGED OFFICE MECHANICAL PLAN
 SCALE: 1/4" = 1'-0"



GEIS COMPANIES
 10020 Aurora-Hudson Rd
 Streetsboro, Ohio 44224
 PH: (330) 528-3500
 FX: (330) 528-0008
 www.geisco.net

BAKERY EXPRESS
 8000 DIXON DRIVE
 BOONE COUNTY
 FLORENCE, KENTUCKY

ENLARGED OFFICE
 MECHANICAL PLAN
M-210





1/22/24
g GDOT DESIGN
 10020 Aurora-Hudson Rd.
 Streetsboro, Ohio 44224
 PH: (330) 528-3500
 FX: (330) 528-0008
 www.gdotdesign.com

Drawn By DBT
 Checked By DBT
 Project Number 23-005-48

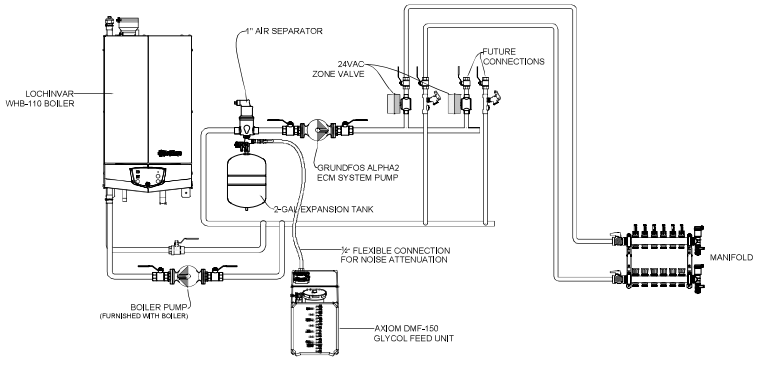
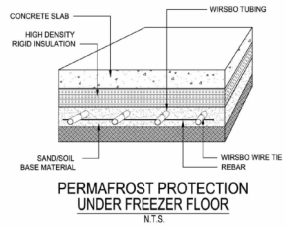
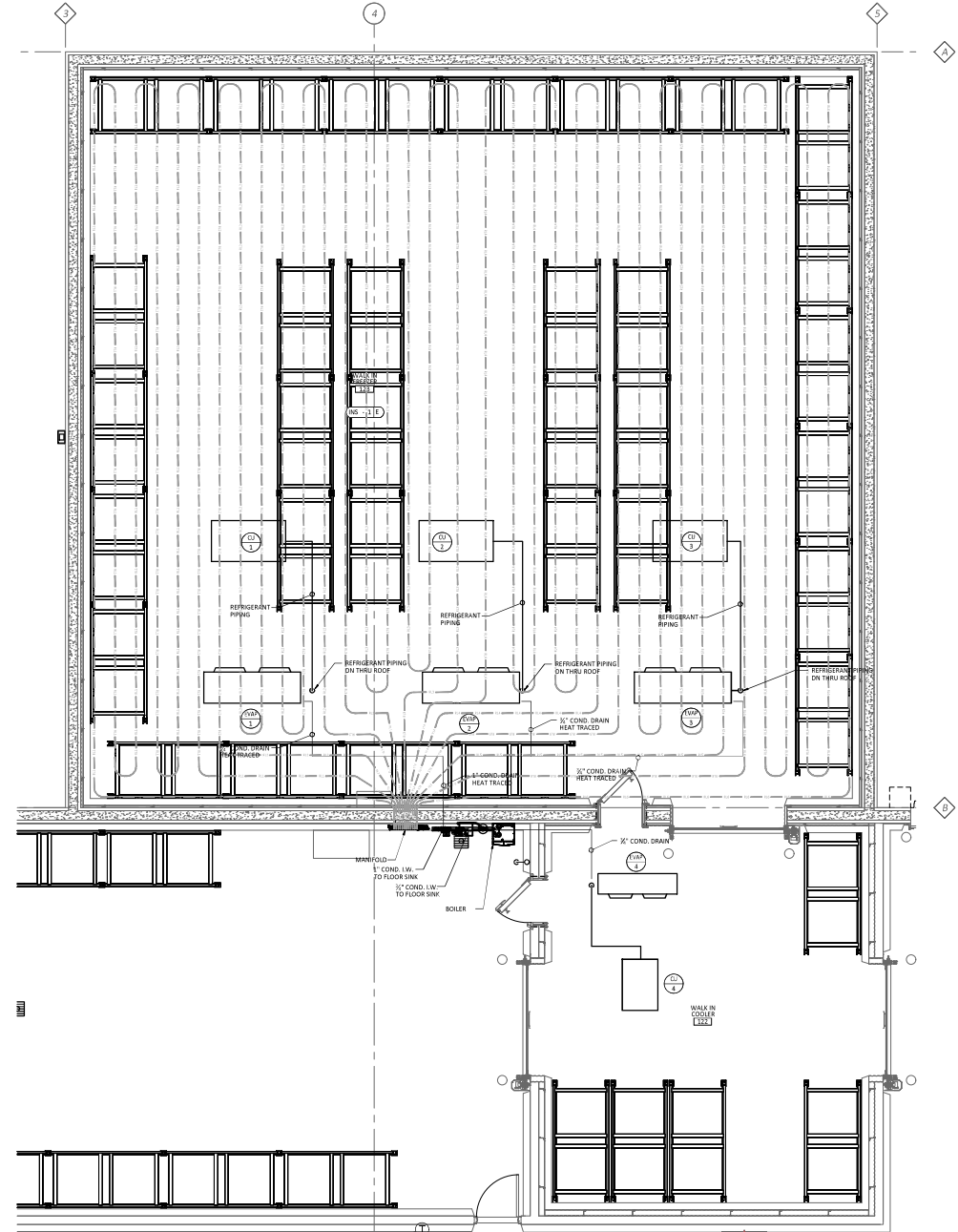
NOTICE
 THIS ARCHITECTURAL AND ENGINEERING DOCUMENT IS PREPARED BY GDOT DESIGN FOR THE USE OF THE CONTRACTOR. IT IS THE CONTRACTOR'S RESPONSIBILITY TO VERIFY THE ACCURACY OF THE INFORMATION PROVIDED HEREIN. GDOT DESIGN AND ENGINEERING SHALL NOT BE RESPONSIBLE FOR ANY CHANGES TO THE CONTRACT DOCUMENTS OR FOR ANY CONSTRUCTION DEFECTS OR OMISSIONS. THE CONTRACTOR SHALL BE RESPONSIBLE FOR OBTAINING ALL NECESSARY PERMITS AND APPROVALS.

DATES AND REVISIONS
 12-15-2023 FOUNDATION PERMIT
 01-22-2024 BUILDING PERMIT

GEIS COMPANIES
 10020 Aurora-Hudson Rd
 Streetsboro, Ohio 44224
 PH: (330) 528-3500
 FX: (330) 528-0008
 www.geisco.net

BAKERY EXPRESS
 8000 DIXON DRIVE
 BOONE COUNTY
 FLORENCE, KENTUCKY

ENLARGED COOLER FREEZER MECH. PLAN
 M-211



ENLARGED COOLER FREEZER MECH. PLAN
 SCALE: 1/4" = 1'-0"





GOBOT DESIGN
 10020 Aurora-Hudson Rd.
 Sheepsboro, Ohio 44241
 PH: (330) 528-3500
 FX: (330) 528-3500
 www.gobotdesign.com

Drawn By DBT
 Checked By DBT
 Project Number 23-005-48

NOTICE
 THIS ARCHITECTURAL AND ENGINEERING DOCUMENT IS PREPARED BY GOBOT DESIGN FOR THE CLIENT'S USE ONLY. NO OTHER PARTY MAY REPRODUCE OR TRANSMIT THIS DOCUMENT WITHOUT THE WRITTEN CONSENT OF THE ARCHITECT. ALL RIGHTS ARE RESERVED. THIS DOCUMENT IS NOT TO BE USED FOR ANY OTHER PROJECT.
 REVISIONS REFLECTED IN THESE DRAWINGS SHALL BE CHANGES TO THE CONTRACT. ANY CHANGES TO THE CONTRACT SHALL BE MADE BY A WRITTEN INSTRUMENT PROVIDED FOR ALL CHANGES. THESE CHANGES ARE NOT TO BE MADE.

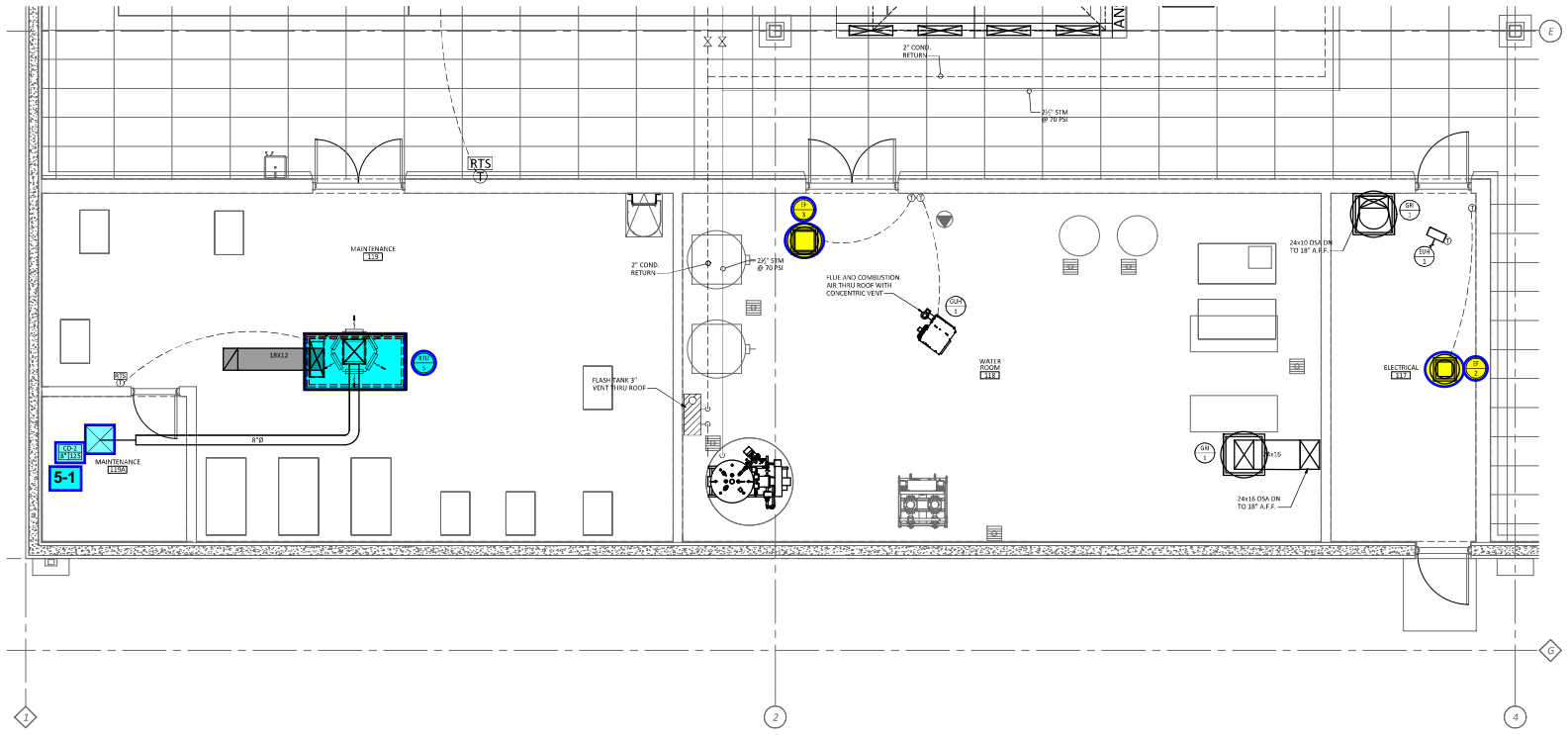
DATES AND REVISIONS

12-15-2023	FOUNDATION PERMIT
01-22-2024	BUILDING PERMIT

GEIS COMPANIES
 10020 Aurora-Hudson Rd
 Sheepsboro, Ohio 44241
 PH: (330) 528-3500
 FX: (330) 528-3500
 www.geisco.net

BAKERY EXPRESS
 8000 DIXON DRIVE
 BOONE COUNTY
 FLORENCE, KENTUCKY

ENLARGED MAINTENANCE
 UTILITY MECH. PLAN
M-212

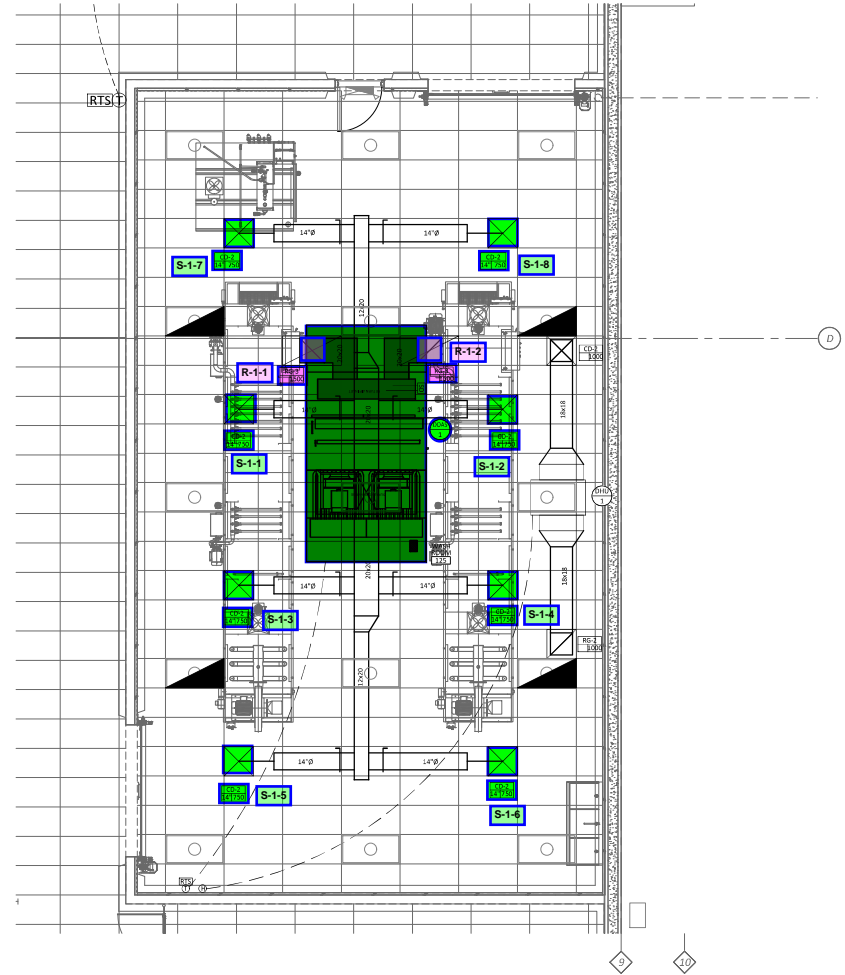


ENLARGED MAINTENANCE UTILITY MECH. PLAN
 SCALE: 1/4" = 1'-0"



M-212 Bakery Express Construction Doc#13-00-00212-ENLARGED MAINTENANCE & UTILITY MECHANICAL PLAN.dwg 01/22/2024 Doug Turner 03/23

\\000001\Bakery Express\CONTRIBUTION\DOC\15_08_04\211 ENLARGED WASHROOM MECHANICAL PLAN.dwg 2/27/2024 8:09 AM User: BJB



ENLARGED WASHROOM MECHANICAL PLAN
 SCALE: 1/4" = 1'-0"



GOOT DESIGN
 10020 Aurora-Hudson Rd.
 Streetsboro, Ohio 44224
 PH: (330) 528-3500
 FX: (330) 528-0008
 www.gootdesign.com

Drawn By DBT
 Checked By DBT
 Project Number 23-005-48

NOTICE
 THIS ARCHITECTURAL AND ENGINEERING DRAWING IS THE PROPERTY OF GOOT DESIGN. NO USE OR REPRODUCTION IN ANY MANNER WITHOUT THE WRITTEN CONSENT OF THE ARCHITECT. ALL RIGHTS ARE RESERVED. THIS DRAWING IS NOT TO BE REPRODUCED OR TRANSMITTED IN ANY FORM OR BY ANY MEANS, ELECTRONIC OR MECHANICAL, INCLUDING PHOTOCOPYING, RECORDING, OR BY ANY INFORMATION STORAGE AND RETRIEVAL SYSTEM, WITHOUT THE WRITTEN PERMISSION OF GOOT DESIGN.

DATES AND REVISIONS

12-15-2023	FOUNDATION PERMIT
01-22-2024	BUILDING PERMIT

GEIS COMPANIES
 10020 Aurora-Hudson Rd
 Streetsboro, Ohio 44224
 PH: (330) 528-3500
 FX: (330) 528-0008
 www.geisco.net

BAKERY EXPRESS
 8000 DIXON DRIVE
 BOONE COUNTY
 FLORENCE, KENTUCKY

ENLARGED WASHROOM
 MECHANICAL PLAN

M-213



National TAB

Project: Bakery Express (Florence, KY)
System/Unit: AHU-DUAL FAN



Asset: DOAS-1

AREA:

UNIT DATA - SUPPLY		
	Design	Actual
Manufacturer	NA	TRANE
Model Number	NA	VX312401
Serial Number	-	24477359
No. Pre-Filters / Size (1)	-	12 / 20x20x2
Design No. Final Filters / Size (3)	-	

MOTOR DATA - SUPPLY	
	Actual
Horsepower / RPM	(2) @ 1HP / NA
Rated Volts / Phase	460 / 3
Rated Amperage / SF	1.8 / 1.15

TEST DATA - SUPPLY		
	Design	Actual
Total CFM	6000	5845
VFD Speed	-	50 HZ
RL Voltage	-	377 VFD
RL Amperage	-	1.7 VFD

PERFORMANCE DATA - SUPPLY		
	Design	Actual
Suction S.P.	-	-1.4
Discharge S.P.	-	0.55
Total S.P.	-	1.95

Completed By: Nick Payne on 03/18/2025

National TAB
 Project: Bakery Express (Florence, KY)
AHU-DUAL FAN



Diffuser Supply (GRD)

DOAS-1/

Asset							
Asset Name	Location	Type	Size	DESIGN CFM	CFM(1)	FINAL CFM	% to design
DOAS-1-SGRD1		CD	14	750	755	738	98.4
DOAS-1-SGRD2		CD	14	750	744	729	97.2
DOAS-1-SGRD3		CD	14	750	796	762	101.6
DOAS-1-SGRD4		CD	14	750	689	739	98.5
DOAS-1-SGRD5		CD	14	750	641	728	97.1
DOAS-1-SGRD6		CD	14	750	635	744	99.2
DOAS-1-SGRD7		CD	14	750	704	698	93.1
DOAS-1-SGRD8		CD	14	750	728	707	94.3
Total				6000	5692	5845	97.42%

National TAB

Project: Bakery Express (Florence, KY)
System/Unit: AHU-DUAL FAN



Asset: DOAS-2

AREA:BAKERY

UNIT DATA - SUPPLY		
	Design	Actual
Manufacturer	NA	TRANE
Model Number	NA	VX312501
Serial Number	-	24477447
No. Pre-Filters / Size (1)	-	12 / 20x20x2
Design No. Final Filters / Size (3)	-	

MOTOR DATA - SUPPLY	
	Actual
Horsepower / RPM	(2) 2 HP / NA
Rated Volts / Phase	460 / 3
Rated Amperage / SF	3.4 / 1.15

TEST DATA - SUPPLY		
	Design	Actual
Total CFM	9000	8809
VFD Speed	-	60 HZ
RL Voltage	-	454 VFD
RL Amperage	-	2.9 VFD

PERFORMANCE DATA - SUPPLY		
	Design	Actual
Suction S.P.	-	-1.69
Discharge S.P.	-	0.66
Total S.P.	-	2.35

Completed By: Nick Payne on 03/18/2025

National TAB
 Project: Bakery Express (Florence, KY)
AHU-DUAL FAN



Diffuser Supply (GRD)

DOAS-2/BAKERY

Asset							
Asset Name	Location	Type	Size	DESIGN CFM	CFM(1)	FINAL CFM	% to design
DOAS-2-SGRD1	BAKER	CRD		9000	6625	8809	97.9
Total				9000	6625	8809	97.88%

National TAB

Project: Bakery Express (Florence, KY)
System/Unit: AHU/RTU



Asset: RTU-1

AREA:OFFICE

Unit Data		
	Design	Actual
MFG	LENNOX	LENNOX
Serial Num	-	5624G03426
Model Num	KGC092S4M	KGC092S4M
Configuration	-	VERTICAL
Num OA Filters 1	-	2
OA Filter Size 1	-	15.5"X25"
Num PreFilter 1	-	4
PreFilter Size 1	-	20"X25"X2"

Test Data		
	Design	Actual
SF CFM	2825	2828
SF RPM	-	768
RA CFM	2525	2507
OA CFM	300	321
RL Voltage	-	490/487/491
RL Amperage	-	2.12/2.15/2.2
OA Damper Position	-	4 VDC
Brake Horse Power	-	1.46

Motor Data		
	Design	Actual
Motor MFG	-	US MOTORS
Frame	-	56HZ
Horsepower	2	2
Motor Rpm	-	1750
Phase	3	3
Rated Voltage	460	460
Rated Amperage	-	2.9
Service Factor	-	1.15

Performance Data		
	Design	Actual
MA Plenum SP	-	-0.31"
Fan Suction SP	-	0.63"
Fan Discharge SP	-	-0.47"
Total ESP	-	0.78"
Fan Total SP	-	1.1"

Drive Data	
	Actual
Motor Sheave Size	3.125"
Motor Bore Size	0.875"
Motor Sheave SetPt	5 TURNS OUT
Fan Sheave Size	6"
Fan Sheave Bore	0.875"
Belt CL Distance	21.5"
Num of Belts	1
Belt Size	AX54

Completed By: Jordan Best on 01/28/2025

National TAB

Project: Bakery Express (Florence, KY)

AHU/RTU



Diffuser Supply (GRD)

RTU-1/OFFICE

Asset							
Asset Name	Location	Type	Size	DESIGN CFM	CFM(1)	FINAL CFM	% to design
RTU-1-SGRD1	106	CD	8	140	56	149	106.4
RTU-1-SGRD2	104	CD	8	210	395	193	91.9
RTU-1-SGRD3	107	CD	6	100	34	98	98.0
RTU-1-SGRD4	108	CD	10	225	346	211	93.8
RTU-1-SGRD5	108	CD	10	225	315	204	90.7
RTU-1-SGRD6	103	CD	8	200	253	186	93.0
RTU-1-SGRD7	102	CD	8	200	53	220	110.0
RTU-1-SGRD8	102	CD	6	100	110	104	104.0
RTU-1-SGRD9	100	CD	8	150	43	138	92.0
RTU-1-SGRD10	100	CD	8	150	67	149	99.3
RTU-1-SGRD11	101	CD	8	200	40	195	97.5
RTU-1-SGRD12	101	CD	8	200	34	212	106.0
RTU-1-SGRD13	109	CD	8	200	294	211	105.5
RTU-1-SGRD14	109	CD	8	200	243	217	108.5
RTU-1-SGRD15	109	CD	8	125	44	122	97.6
RTU-1-SGRD16	109	CD	8	200	323	219	109.5
Total				2825	2650	2828	100.11%

Completed By: Jordan Best on 01/28/2025

National TAB

Project: Bakery Express (Florence, KY)
System/Unit: AHU/RTU



Asset: RTU-2

AREA: BREAKROOM

Unit Data		
	Design	Actual
MFG	LENNOX	LENNOX
Serial Num	-	5624G02701
Model Num	KGC180S4M	KGB060S4B
Configuration	-	VERTICAL
Num OA Filters 1	-	1
OA Filter Size 1	-	30"X15"
Num PreFilter 1	-	4
PreFilter Size 1	-	20"X20"X2"

Test Data		
	Design	Actual
SF CFM	2000	1926
SF RPM	-	1117
RA CFM	1550	1464
OA CFM	450	462
RL Voltage	-	489/493/493
RL Amperage	-	1.19/1.21/1.32
OA Damper Position	-	2.8 VDC
Brake Horse Power	-	0.65"

Motor Data		
	Design	Actual
Motor MFG	-	INTERLINK
Frame	-	56HZ
Horsepower	1	1
Motor Rpm	-	1760
Phase	3	3
Rated Voltage	460	460
Rated Amperage	-	1.4
Service Factor	-	1.15

Performance Data		
	Design	Actual
MA Plenum SP	-	-0.40"
Fan Suction SP	-	-0.47"
Fan Discharge SP	-	0.58"
Total ESP	-	0.98"
Fan Total SP	-	1.05

Drive Data	
	Actual
Motor Sheave Size	3"
Motor Bore Size	0.75"
Motor Sheave SetPt	5 TURNS OUT
Fan Sheave Size	4.5"
Fan Sheave Bore	0.875"
Belt CL Distance	16"
Num of Belts	1
Belt Size	A40

Completed By: Jordan Best on 01/28/2025

National TAB

Project: Bakery Express (Florence, KY)

AHU/RTU



Diffuser Supply (GRD)

RTU-2/BREAKROOM

Asset							
Asset Name	Location	Type	Size	DESIGN CFM	CFM(1)	FINAL CFM	% to design
RTU-2-SGRD1	114	CD	6	50	40	54	108.0
RTU-2-SGRD2	115	CD	6	50	28	46	92.0
RTU-2-SGRD3	116	CD	8	150	398	137	91.3
RTU-2-SGRD4	114	CD	8	150	17	136	90.7
RTU-2-SGRD5	115	CD	8	150	126	144	96.0
RTU-2-SGRD6	113	CD	10	325	33	308	94.8
RTU-2-SGRD7	113	CD	10	325	91	333	102.5
RTU-2-SGRD8	112	CD	8	150	174	148	98.7
RTU-2-SGRD9	113	CD	10	325	557	306	94.2
RTU-2-SGRD10	113	CD	10	325	613	314	96.6
Total				2000	2077	1926	96.3%

Completed By: Jordan Best on 01/22/2025

National TAB

Project: Bakery Express (Florence, KY)
System/Unit: AHU/RTU



Asset: RTU-3

AREA:OUTBOUND SHIPPING

Unit Data		
	Design	Actual
MFG	LENNOX	LENNOX
Serial Num	-	5624G03555
Model Num	KGB092S4M	KGB092S4M
Configuration	-	5624J03666
Num OA Filters 1	-	2
OA Filter Size 1	-	15.5"X25"
Num PreFilter 1	-	4
PreFilter Size 1	-	20"X25"X2"

Test Data		
	Design	Actual
SF CFM	3000	3217
SF RPM	-	745.5
RA CFM	2590	2795
OA CFM	410	422
RL Voltage	-	496/493/496
RL Amperage	-	1.64/2.15/1.57
OA Damper Position	-	4 VDC
Brake Horse Power	-	1.23

Motor Data		
	Design	Actual
Motor MFG	-	US MOTORS
Frame	-	56HZ
Horsepower	2	2
Motor Rpm	-	1750
Phase	3	3
Rated Voltage	460	460
Rated Amperage	-	2.9
Service Factor	-	1.15

Performance Data		
	Design	Actual
MA Plenum SP	-	-0.23"
Fan Suction SP	-	-0.71"
Fan Discharge SP	-	0.32"
Total ESP	-	0.55"
Fan Total SP	-	1.03"

Drive Data	
	Actual
Motor Sheave Size	3.125"
Motor Bore Size	0.875"
Motor Sheave SetPt	5 TURNS OUT
Fan Sheave Size	6"
Fan Sheave Bore	0.875"
Belt CL Distance	21.5"
Num of Belts	1
Belt Size	AX54

Completed By: Jordan Best on 01/29/2025

National TAB
 Project: Bakery Express (Florence, KY)
AHU/RTU



Diffuser Supply (GRD)

RTU-3/OUTBOUND SHIPPING

Asset							
Asset Name	Location	Type	Size	DESIGN CFM	CFM(1)	FINAL CFM	% to design
RTU-3-SGRD1	OUTBOUND SHIPPING	CD	14	500	625	542	108.4
RTU-3-SGRD2	OUTBOUND SHIPPING	CD	14	500	539	527	105.4
RTU-3-SGRD3	OUTBOUND SHIPPING	CD	12	500	537	546	109.2
RTU-3-SGRD4	OUTBOUND SHIPPING	CD	14	500	386	527	105.4
RTU-3-SGRD5	OUTBOUND SHIPPING	CD	14	500	556	532	106.4
RTU-3-SGRD6	OUTBOUND SHIPPING	CD	12	500	584	543	108.6
Total				3000	3227	3217	107.23%

Completed By: Jordan Best on 01/21/2025

National TAB

Project: Bakery Express (Florence, KY)
System/Unit: AHU/RTU



Asset: RTU-4

AREA: DRY STORAGE

Unit Data		
	Design	Actual
MFG	LENNOX	LENNOX
Serial Num	-	5624G03554
Model Num	KGB074S4T	KGB074S4T
Configuration	-	VERTICAL
Num OA Filters 1	-	1
OA Filter Size 1	-	15"X30"
Num PreFilter 1	-	4
PreFilter Size 1	-	20"X20"X2"

Test Data		
	Design	Actual
SF CFM	2400	2402
SF RPM	-	1186
RA CFM	1990	1988
OA CFM	410	414
RL Voltage	-	494/493/489
RL Amperage	-	2.27/2.35/2.33
OA Damper Position	-	4 VDC
Brake Horse Power	-	1.59

Motor Data		
	Design	Actual
Motor MFG	-	US MOTORS
Frame	-	56HZ
Horsepower	2	2
Motor Rpm	-	1740
Phase	3	3
Rated Voltage	460	460
Rated Amperage	-	2.9
Service Factor	-	1.15

Performance Data		
	Design	Actual
MA Plenum SP	-	-0.31"
Fan Suction SP	-	-0.40"
Fan Discharge SP	-	0.63"
Total ESP	-	0.94"
Fan Total SP	-	1.03"

Drive Data	
	Actual
Motor Sheave Size	3.75"
Motor Bore Size	0.875"
Motor Sheave SetPt	5 TURNS OUT
Fan Sheave Size	5"
Fan Sheave Bore	0.875"
Belt CL Distance	16"
Num of Belts	1
Belt Size	A42

Completed By: Jordan Best on 01/29/2025

National TAB
 Project: Bakery Express (Florence, KY)
AHU/RTU



Diffuser Supply (GRD)

RTU-4/DRY STORAGE

Asset							
Asset Name	Location	Type	Size	DESIGN CFM	CFM(1)	FINAL CFM	% to design
RTU-4-SGRD1	DRY STORAGE	CD	14	400	153	414	103.5
RTU-4-SGRD2	DRY STORAGE	CD	14	400	67	397	99.3
RTU-4-SGRD3	DRY STORAGE	CD	10	400	791	387	96.8
RTU-4-SGRD4	DRY STORAGE	CD	14	400	258	381	95.3
RTU-4-SGRD5	DRY STORAGE	CD	14	400	376	395	98.8
RTU-4-SGRD6	DRY STORAGE	CD	10	400	721	428	107.0
Total				2400	2366	2402	100.08%

Completed By: Jordan Best on 01/29/2025

National TAB

Project: Bakery Express (Florence, KY)
System/Unit: AHU/RTU



Asset: RTU-5

AREA:MAINTENANCE

Unit Data		
	Design	Actual
MFG	LENNOX	LENNOX
Serial Num	-	5624G02710
Model Num	KGB036S4B	KGB036S4B
Configuration	-	VERTICAL
Num OA Filters 1	-	1
OA Filter Size 1	-	30"X15"
Num PreFilter 1	-	4
PreFilter Size 1	-	16"X20"X2"

Test Data		
	Design	Actual
SF CFM	1200	1166
RA CFM	970	958
OA CFM	230	208
RL Voltage	-	488/491/489
RL Amperage	-	1.0/1.0/1.1
OA Damper Position	-	3 VDC
Brake Horse Power	-	0.78

Motor Data		
	Design	Actual
Motor MFG	-	INTERLINK
Frame	-	56HZ
Horsepower	1	1
Motor Rpm	-	1760
Phase	3	3
Rated Voltage	460	460
Rated Amperage	-	1.4
Service Factor	-	1.15

Performance Data		
	Design	Actual
MA Plenum SP	-	-0.16
Fan Suction SP	-	-0.54
Fan Discharge SP	-	0.23
Total ESP	-	0.39
Fan Total SP	-	0.77
Cooling Coil P.D.	-	

Drive Data	
	Actual
Motor Sheave Size	3.5"
Motor Bore Size	0.75"
Fan Sheave Size	5.375"
Fan Sheave Bore	1"
Belt CL Distance	16"
Num of Belts	1
Belt Size	A42

Completed By: Nick Payne on 03/18/2025

National TAB
 Project: Bakery Express (Florence, KY)
AHU/RTU



Diffuser Supply (GRD)

RTU-5/MAINTENANCE

Asset							
Asset Name	Location	Type	Size	DESIGN CFM	CFM(1)	FINAL CFM	% to design
RTU-5-SGRD1	119A	CD	8	125	88	117	93.6
Total				125	88	117	93.6%

National TAB

Project: Bakery Express (Florence, KY)
System/Unit: AHU/RTU



Asset: RTU-6

AREA:BAKERY

Unit Data		
	Design	Actual
MFG	LENNOX	LENNOX
Serial Num	-	5624J03252
Model Num	KGC180S4M	KGC180S4M
Configuration	-	VERTICAL
Num OA Filters 1	-	3
OA Filter Size 1	-	25"x16"
Num PreFilter 1	-	6
PreFilter Size 1	-	24"x24"x2"

Test Data		
	Design	Actual
SF CFM	6000	5967
SF RPM	-	629
RA CFM	5425	5356
OA CFM	575	611
RL Voltage	-	NA
RL Amperage	-	3.1VFD
OA Damper Position	-	4.0DCV
Brake Horse Power	-	2.3

Motor Data		
	Design	Actual
Motor MFG	-	INTER LINK
Horsepower	3	3
Motor Rpm	-	1750
Phase	3	3
Rated Voltage	460	460
Rated Amperage	-	4.0
Service Factor	-	1.15

Performance Data		
	Design	Actual
MA Plenum SP	-	-0.26"
Fan Suction SP	-	-0.42"
Fan Discharge SP	-	0.29"
Total ESP	-	0.55"
Fan Total SP	-	0.71"

Drive Data	
	Actual
Motor Sheave Size	3-3/4"
Motor Bore Size	7/8"
Motor Sheave SetPt	3 OUT
Fan Sheave Size	BK-72
Fan Sheave Bore	1-3/16"
Belt CL Distance	20-3/4"
Num of Belts	1
Belt Size	BX55

Completed By: Gabe Merk on 01/29/2025

Notes:
VFD SETPOINT 45HZ

Written By: Gabe Merk on 01/29/2025

National TAB

Project: Bakery Express (Florence, KY)
System/Unit: AHU/RTU



Asset: RTU-7

AREA: BAKERY

Unit Data		
	Design	Actual
MFG	LENNOX	LENNOX
Serial Num	-	5624J03250
Model Num	KGC180S4M	KGC180S4M
Configuration	-	VERTICAL
Num OA Filters 1	-	3
OA Filter Size 1	-	16"x25"
Num PreFilter 1	-	6
PreFilter Size 1	-	24"x24"x2"

Test Data		
	Design	Actual
SF CFM	6000	5858
SF RPM	-	634
RA CFM	5425	5235
OA CFM	575	623
RL Voltage	-	NA
RL Amperage	-	3.0 VFD
OA Damper Position	-	3.7 DCV
Brake Horse Power	-	2.3

Motor Data		
	Design	Actual
Motor MFG	-	INTER LINK
Horsepower	3	3
Motor Rpm	-	1750
Phase	3	3
Rated Voltage	460	460
Rated Amperage	-	4.0
Service Factor	-	1.15

Performance Data		
	Design	Actual
MA Plenum SP	-	-0.21"
Fan Suction SP	-	-0.38"
Fan Discharge SP	-	0.33"
Total ESP	-	0.54"
Fan Total SP	-	0.71"

Drive Data	
	Actual
Motor Sheave Size	3-3/4"
Motor Bore Size	7/8"
Motor Sheave SetPt	6 OUT
Fan Sheave Size	BK72
Fan Sheave Bore	1-3/16"
Belt CL Distance	21-1/4"
Num of Belts	1
Belt Size	BX55

Completed By: Gabe Merk on 01/29/2025

Notes:
VFD SETPOINT 54HZ

Written By: Gabe Merk on 01/29/2025

National TAB

Project: Bakery Express (Florence, KY)
System/Unit: AHU/RTU



Asset: RTU-8

AREA:BAKERY

Unit Data		
	Design	Actual
MFG	LENNOX	LENNOX
Serial Num	-	5624H06164
Model Num	KGC180S4M	KGC180S4M
Configuration	-	VERTICAL
Num OA Filters 1	-	3
OA Filter Size 1	-	16"x25"
Num PreFilter 1	-	6
PreFilter Size 1	-	24"x24"x2"

Test Data		
	Design	Actual
SF CFM	6000	6213
SF RPM	-	721
RA CFM	5425	5610
OA CFM	575	603
RL Voltage	-	INACCESSIBLE
RL Amperage	-	4.2 VFD
OA Damper Position	-	4.0 DCV
Brake Horse Power	-	3.1

Motor Data		
	Design	Actual
Motor MFG	-	INTERLINK
Frame	-	56HZ
Horsepower	3	3
Motor Rpm	-	1750
Phase	3	3
Rated Voltage	460	460
Rated Amperage	-	4.0
Service Factor	-	1.15

Performance Data		
	Design	Actual
MA Plenum SP	-	-0.30"
Fan Suction SP	-	-0.52"
Fan Discharge SP	-	0.38"
Total ESP	-	0.68"
Fan Total SP	-	0.90"

Drive Data	
	Actual
Motor Sheave Size	3-7/8"
Motor Bore Size	7/8"
Fan Sheave Size	BK72
Fan Sheave Bore	1-3/16"
Belt CL Distance	20-3/4"
Num of Belts	1
Belt Size	BX55

Completed By: Nick Payne on 03/18/2025

National TAB

Project: Bakery Express (Florence, KY)
System/Unit: AHU/RTU



Asset: RTU-9

AREA:BAKERY

Unit Data		
	Design	Actual
MFG	LENNOX	LENNOX
Serial Num	-	5624H06162
Model Num	KGC180S4M	KGC180S4M
Configuration	-	VERTICAL
Num OA Filters 1	-	3
OA Filter Size 1	-	16"X25"
Num PreFilter 1	-	6
PreFilter Size 1	-	24"X24"X2"

Test Data		
	Design	Actual
SF CFM	6000	5991
SF RPM	-	664
RA CFM	5425	5424
OA CFM	575	567
RL Voltage	-	INACCESSIBLE
RL Amperage	-	3.0 VFD
OA Damper Position	-	4.0 DCV
Brake Horse Power	-	2.25

Motor Data		
	Design	Actual
Motor MFG	-	INTER LINK
Frame	-	56HZ
Horsepower	3	3
Motor Rpm	-	1750
Phase	3	3
Rated Voltage	460	460
Rated Amperage	-	4.0
Service Factor	-	1.15

Performance Data		
	Design	Actual
MA Plenum SP	-	-0.33"
Fan Suction SP	-	-0.49"
Fan Discharge SP	-	0.36"
Total ESP	-	0.69"
Fan Total SP	-	0.85"

Drive Data	
	Actual
Motor Sheave Size	3-7/8"
Motor Bore Size	7/8"
Motor Sheave SetPt	6 OUT
Fan Sheave Size	BK72
Fan Sheave Bore	1-3/16"
Belt CL Distance	20-1/2"
Num of Belts	1
Belt Size	BX55

Completed By: Gabe Merk on 02/05/2025

Notes:
60 HZ VFD SETPOINT

Written By: Gabe Merk on 02/05/2025

National TAB

Project: Bakery Express (Florence, KY)
System/Unit: AHU/RTU



Asset: RTU-10

AREA: BAKERY

Unit Data		
	Design	Actual
MFG	LENNOX	LENNOX
Serial Num	-	5624J03251
Model Num	KGC180S4M	KGC180S4M
Configuration	-	VERTICAL
Num OA Filters 1	-	3
OA Filter Size 1	-	16"X25"
Num PreFilter 1	-	6
PreFilter Size 1	-	24"X24"X2"

Test Data		
	Design	Actual
SF CFM	6000	5837
SF RPM	-	647
RA CFM	5425	5259
OA CFM	575	578
RL Voltage	-	INACCESSIBLE
RL Amperage	-	3.1 VFD
OA Damper Position	-	3.5DCV
Brake Horse Power	-	2.32

Motor Data		
	Design	Actual
Motor MFG	-	INTER LINK
Frame	-	56 HZ
Horsepower	3	3
Motor Rpm	-	1750
Phase	3	3
Rated Voltage	460	460
Rated Amperage	-	4.0
Service Factor	-	1.15

Performance Data		
	Design	Actual
MA Plenum SP	-	-0.21"
Fan Suction SP	-	-0.41"
Fan Discharge SP	-	0.36"
Total ESP	-	0.57"
Fan Total SP	-	0.77"

Drive Data	
	Actual
Motor Sheave Size	3-7/8"
Motor Bore Size	7/8"
Motor Sheave SetPt	NA
Fan Sheave Size	BK72
Fan Sheave Bore	1-3/16"
Belt CL Distance	20-1/2"
Num of Belts	1
Belt Size	BX55

Completed By: Gabe Merk on 02/05/2025

Notes:
54Hz VFD SETPOINT

Written By: Gabe Merk on 02/05/2025

National TAB

Project: Bakery Express (Florence, KY)
System/Unit: AHU/RTU



Asset: RTU-11

AREA:BAKERY

Unit Data		
	Design	Actual
MFG	LENNOX	LENNOX
Serial Num	-	5624H06163
Model Num	KGC180S4M	KGC180S4M
Configuration	-	VERTICAL
Num OA Filters 1	-	3
OA Filter Size 1	-	16"X25"
Num PreFilter 1	-	6
PreFilter Size 1	-	24"X24"X2"

Test Data		
	Design	Actual
SF CFM	6000	6153
SF RPM	-	682
RA CFM	5425	5556
OA CFM	575	597
RL Voltage	-	INACCESSIBLE
RL Amperage	-	3.1 VFD
OA Damper Position	-	3.5 VDC
Brake Horse Power	-	2.3

Motor Data		
	Design	Actual
Motor MFG	-	INTER LINK
Frame	-	56 HZ
Horsepower	3	3
Motor Rpm	-	1750
Phase	3	3
Rated Voltage	460	460
Rated Amperage	-	4.0
Service Factor	-	1.15

Performance Data		
	Design	Actual
MA Plenum SP	-	-0.28"
Fan Suction SP	-	-0.49"
Fan Discharge SP	-	0.32"
Total ESP	-	0.60"
Fan Total SP	-	0.81"

Drive Data	
	Actual
Motor Sheave Size	3-7/8"
Motor Bore Size	7/8"
Fan Sheave Size	BK72
Fan Sheave Bore	1-3/16"
Belt CL Distance	20-1/2"
Num of Belts	1
Belt Size	BX55

Completed By: Nick Payne on 03/18/2025

National TAB

Project: Bakery Express (Florence, KY)
System/Unit: AHU/RTU



Asset: RTU-12

AREA: BAKERY

Unit Data		
	Design	Actual
MFG	LENNOX	LENNOX
Serial Num	-	5624H06161
Model Num	KGC180S4M	KGC180S4M
Configuration	-	VARTICAL
Num OA Filters 1	-	3
OA Filter Size 1	-	16"X25"
Num PreFilter 1	-	6
PreFilter Size 1	-	24"X24"X2"

Test Data		
	Design	Actual
SF CFM	6000	5702
SF RPM	-	632
RA CFM	5425	5091
OA CFM	575	611
RL Voltage	-	INACCESSIBLE
RL Amperage	-	2.8 VFD
OA Damper Position	-	3.2VDC
Brake Horse Power	-	2.1

Motor Data		
	Design	Actual
Motor MFG	-	INTER LINK
Frame	-	56 HZ
Horsepower	3	3
Motor Rpm	-	1750
Phase	3	3
Rated Voltage	460	460
Rated Amperage	-	4.0
Service Factor	-	1.15

Performance Data		
	Design	Actual
MA Plenum SP	-	0.22"
Fan Suction SP	-	-0.35"
Fan Discharge SP	-	0.38"
Total ESP	-	0.60"
Fan Total SP	-	0.73"

Drive Data	
	Actual
Motor Sheave Size	3-7/8"
Motor Bore Size	7/8"
Motor Sheave SetPt	NA
Fan Sheave Size	BK72
Fan Sheave Bore	1-3/16"
Belt CL Distance	20-1/2"
Num of Belts	1
Belt Size	BX55

Completed By: Gabe Merk on 02/05/2025

National TAB

Project: Bakery Express (Florence, KY)
System/Unit: AHU/RTU



Asset: RTU-13

AREA:BAKERY

Unit Data		
	Design	Actual
MFG	LENNOX	LENNOX
Serial Num	-	5624H06160
Model Num	KGC180S4M	KGC180S4M
Configuration	-	VERTICAL
Num OA Filters 1	-	3
OA Filter Size 1	-	16"X25"
Num PreFilter 1	-	6
PreFilter Size 1	-	24"X24"X2"

Test Data		
	Design	Actual
SF CFM	6000	5558
SF RPM	-	616
RA CFM	5425	4992
OA CFM	575	566
RL Voltage	-	INACCESSIBLE
RL Amperage	-	2.8 VFD
OA Damper Position	-	3.2 DCV
Brake Horse Power	-	2.1

Motor Data		
	Design	Actual
Motor MFG	-	INTER LINK
Frame	-	56 HZ
Horsepower	3	3
Motor Rpm	-	1750
Phase	3	3
Rated Voltage	460	460
Rated Amperage	-	4.0
Service Factor	-	1.15

Performance Data		
	Design	Actual
MA Plenum SP	-	-0.20"
Fan Suction SP	-	-0.37"
Fan Discharge SP	-	0.31"
Total ESP	-	0.51"
Fan Total SP	-	0.68"

Drive Data	
	Actual
Motor Sheave Size	3-7/8"
Motor Bore Size	7/8"
Motor Sheave SetPt	NA
Fan Sheave Size	BK72
Fan Sheave Bore	1-3/16"
Belt CL Distance	20-1/2"
Num of Belts	1
Belt Size	BX55

Completed By: Gabe Merk on 02/05/2025

Notes:
54HZ VFD SETPOINT

Written By: Gabe Merk on 02/05/2025

National TAB

Project: Bakery Express (Florence, KY)
System/Unit: FAN - Exhaust



Asset: EF-1

AREA:OFFICE RR

Unit Data		
	Design	Actual
MFG	NA	GREENHECK
Model Num	NA	G-098-4-VG-1-A9-X
Serial Num	-	25234257
Type	CENT	CENT

Test Data		
	Design	Actual
CFM	500	480
RL Voltage	-	121
RL Amperage	-	1.93

Motor Data		
	Design	Actual
Horsepower	0.5	0.25
Motor Rpm	-	1750
Phase	1	1
Voltage (rated)	115	115
Amperage (rated)	-	2.85
Service Factor	-	1.25

Completed By: Jordan Best on 01/28/2025

Notes:
. Fan speed set point 8/10.

Written By: Jordan Best on 01/22/2025

National TAB
 Project: Bakery Express (Florence, KY)
FAN - Exhaust



Diffuser Ret/Exh (GRD)

EF-1/OFFICE RR

Asset								
Asset Name	Type	Size	DESIGN CFM	AK	CFM(1)	CFM(2)	FINAL CFM	% to design
EF-1-EGRD1	NA	8"	175	1	179	177	177	101.1
EF-1-EGRD2	NA	8"	175	1	164	163	163	93.1
EF-1-EGRD3	NA	8"	50	1	38	46	46	92.0
EF-1-EGRD4	NA	8"	50	1	74	47	47	94.0
EF-1-EGRD5	NA	8"	50	1	22	47	47	94.0
Total			500		477	480	480	96%

Completed By: Jordan Best on 01/22/2025

National TAB

Project: Bakery Express (Florence, KY)
System/Unit: FAN - Exhaust



Asset: EF-2

AREA:ELEC ROOM

Unit Data		
	Design	Actual
MFG	NA	GREENHECK
Model Num	NA	G-099-4-VG-1-19
Serial Num	-	2523425824H
Type	CENT	CENTRIFUGAL

Test Data		
	Design	Actual
CFM	1000	1048
RL Voltage	-	120
RL Amperage	-	2.0

Motor Data		
	Design	Actual
Horsepower	0.25	0.25
Motor Rpm	-	1725
Phase	1	1
Voltage (rated)	115	120
Amperage (rated)	-	2.6
Service Factor	-	1

Completed By: Nick Payne on 03/18/2025

National TAB

Project: Bakery Express (Florence, KY)
System/Unit: FAN - Exhaust



Asset: EF-3

AREA: WATER ROOM

Unit Data		
	Design	Actual
MFG	NA	GREENHECK
Model Num	NA	G-140-10-V6-1-22
Serial Num	-	2523426124H
Type	CENT	CENTRIFUGAL

Test Data		
	Design	Actual
CFM	2500	2387
RL Voltage	-	477/475/478
RL Amperage	-	1.4/1.5/1.4

Motor Data		
	Design	Actual
Horsepower	1	1
Phase	1	3
Voltage (rated)	115	460
Amperage (rated)	-	1.8

Completed By: Nick Payne on 03/18/2025