



SUBMITTAL REVIEW

To: GPD Arch No: No.: 2022-3368
 Title: **HOOD**
 Project Name: **CHIPOTLE - SANDTOWN, GA**
 Project Number: 2022-02351 Section:

Engineer's Review is only for general conformance with the design concept of the project and general compliance with the information given in the Contract Documents. Any Action shown is subject to the requirements of the Contract Documents. The Contractor is responsible for dimensions which shall be confirmed and correlated at the jobsite, fabrication processes, techniques of construction, coordination of his work with other trades, and the satisfactory performance of his work.

SALAS O'BRIEN

STATUS	
<input type="checkbox"/>	NET – No Exceptions Taken
<input type="checkbox"/>	MCN – Make Corrections Noted
<input type="checkbox"/>	SSI – Submit Specified Items
<input type="checkbox"/>	RES – Resubmit
<input type="checkbox"/>	REJ – Rejected
<input type="checkbox"/>	DNR – Do Not Resubmit

Date Out: 10/7/2022 Reviewed By: PATRICK MATHERN

COMMENTS:

1. MAU-1 – ESP shall be 0.8" in lieu of 0.5".
2. Coordinate natural gas requirements with plumbing contractor.

SECTION 23 38 13 13

SPECIFICATIONS
TAG Commercial Kitchen Ventilation Hoods, Listed Commercial Kitchen Hoods
PART 1 - GENERAL

11. SUMMARY

- A. The hood series is a Type I, wall canopy hood for use over 600°F mechanical boiler and performance enhancing lip for exceptional capture and containment.
- B. The hood shall have the size, shape, and performance specified on drawings.

12. SUBMITTALS

- A. The manufacturer assumes no liability for the use or results of use from this document. Specifications are to be reviewed by the engineer to confirm the project's requirements and meet Federal, State, and Local Codes and regulations.
- B. The manufacturer provides product development. It reserves the right to modify product design and specifications without notice. Submittal drawings, including hood section views and hood plan views, shall be available to the engineer, architect, and owner for their use in construction, operation, and maintenance.

13. QUALITY ASSURANCE

- A. This hood is ETL-listed to standard UL710, UL-C710, and UL-C-9646 when installed in accordance with these installation instructions and National Fire Protection Association Standard NFPA 96, Standard for Ventilation, Control and Fire Protection of Commercial Cooking Operations.
- B. Built-in compliance with NSF/ANSI Standard 2.
- C. The hood shall be ETL Listed as:
 - 1. Exhaust Hood Without Exhaust Damper.
 - 2. ETL Sanitation Listed and built in accordance with NFPA 96.
 - 3. The ETL label shall list temperature ratings and minimum CFM/ft² ratings.

14. WARRANTY

- A. All units shall be provided with the following standard warranty:
 - 1. This equipment is warranted to be free from defects in materials and workmanship, under normal use and service, for a period of 2-years from date of shipment.
 - 2. The manufacturer shall not be liable for incidental and consequential losses and damages potentially attributable to malfunctioning or defective parts. The manufacturer shall not be liable for damage to material or workmanship within the 2-year warranty period or reworkation by the manufacturer, such part will be repaired or replaced at no charge. The manufacturer shall not be liable for labor costs incurred in connection with such repair or replacement. Equipment shall not be returned without manufacturer's prior authorization, and all returned equipment shall be shipped by the manufacturer, prepaid to a destination determined by the manufacturer.
 - 3. Refer to Manufacturer's Operation, Installation, and Maintenance (OIM) Manual for detailed descriptions of what is/is not covered and contact information for warranty claims.

PART 2 - PRODUCTS

21. GENERAL

- A. Construction shall be dependent on the structural application to minimize distortion and other defects. All seams, joints, and penetrations of the hood enclosure to the lower outermost perimeter, which directs and captures grease-laden vapor and particulate matter, shall be a liquid-tight continuous external weld in accordance with NFPA 96.

- B. Duct sizes, CFM, and static pressure requirements shall be as shown on drawings. Static pressure requirements shall be precise and accurate to velocity and volume information shall be accurate within 1% increments along the length of the vent duct.

22. CONSTRUCTION

- A. Construction shall be type 430 stainless steel.
- B. Double wall insulated front to eliminate condensation and increase rigidity on wide sizes. The insulation shall have a flexural modulus of 1000 psi and meet UL 181 requirements and be in accordance with NFPA 90A and 90B.
- C. Hood shall be equipped with a minimum of four connections for hanger rods. Hood lengths greater than 12' will have added hangers.
- D. Exhaust duct collar to be 4' high with flange.
- E. The grease drain system shall be an enclosed integral part of the hood back and have slopes with an exposed, removable 1/2" grease cup to facilitate cleaning.
- F. An integral baffle to direct grease laden vapors toward the exhaust filter bank.
- G. Hood shall be furnished with UL classified filters, supplied in size and quantity as required by ventilator.
- H. All seams shall be welded and have stainless steel on exposed surfaces.

23. LIGHTING

- A. L55 Series canopy light fixture, includes clean thermal and shock resistant globe.

24. FILTERS

- A. Stainless Steel Coprate Solo filter with hook, ETL Listed. Particulate capture efficiency: 85% efficient at 9 microns, 76% efficient at 5 microns.

25. OPTIONS

- A. Fire Suppression System UL 300 Fire suppression system.
- B. Optional perforated supply plenum shall provide make-up air discharged below the cooling equipment.
 - 1. Perforated diffuser plates shall be included in the design to provide even air distribution.
 - 2. Unexposed surfaces shall be constructed of aluminumized steel. Plenum shall be insulated to prevent condensation.
- 3. Dual Plenum (A/C-RSP)

26. ACCESSORIES

- A. End Panels maximize hood performance and eliminate the effects of cross drafts in the kitchen units constructed of stainless steel. End panels are constructed of stainless steel and are designed for safety and rigidity. Selected panels:
 - 1. Quarter End Panel
- B. Vapors may be installed from the factory or field installed. Vapors selected:
 - 1. Wrapper
- C. Miscellaneous options selected:
 - 1. Full Dimension Hanging Bracket - Unistrut added to allow for various hood mounting locations.
 - 2. Insulation for Back of Hood - Backside of hood is fully insulated.

PART 3 - EXECUTION

31. EXAMINATION

- A. Examine areas and conditions under which the system is installed. Do not proceed with work until unsatisfactory conditions have been

corrected in a manner acceptable to installer.

32. INSTALLATION

- A. Install in accordance with manufacturer's instructions, drawings, and applicable building codes. Manufacturer's installation manual, and all applicable building codes.

REVISIONS

NO.	DATE	DESCRIPTION



4641 Paragon Park Rd., Raleigh, NC, 27616 PHONE: (919) 875-0420 FAX: (919) 875-0577 EMAIL: reg40@captiveaire.com

CHIPOTLE SANDTOWN # 44492
ATLANTA, GA, 30331

DATE	9/26/2022
DWG.#	5658615
DRAWN BY	JNB-40
SCALE	3/4" = 1'-0"
MASTER DRAWING	

SHEET NO. 3

EXHAUST FAN INFORMATION - JOB#5658615

UNIT NO	TAG	QTY	FAN UNIT MODEL #	MANUFACTURER	CFM	ESP	HPM	MOTOR ENCL.	HP	BHP	PHASE	VOLT	FLA	DISCHARGE VELOCITY	WEIGHT (LBS)	SONES
1	EF-1	1	DESKTOP-A	CAPTIVEAIR	3600	1.340	765	2DP-PREMIUM	3.000	1.3460	3	208	10.2	727 FPM	304	16.3
2	EF-2	1	DESKTOP-A	CAPTIVEAIR	1300	0.600	1304	TECH-ECM	0.6200	0.09350	1	115	2.9		49	6.3

MVA FAN INFORMATION - JOB#5658615

FAN UNIT NO	TAG	QTY	FAN UNIT MODEL #	BLOWER HOUSING	MIN CFM	DESIGN CFM	ESP	HPM	MOTOR ENCL.	HP	BHP	PHASE	VOLT	FLA	DISCHARGE VELOCITY	WEIGHT (LBS)	SONES		
3	MVA-1	1	AI-250-15D	150#-1-IND	AI-2500	1000	1950	0.520	2046	2DP-PREMIUM	2.000	1.3320	3	208	6.1	774	154	310	20.4

GAS FIBER MAKE-UP AIR UNITS

FAN UNIT NO	TAG	INPUT BTUS	OUTPUT BTUS	TEMP RISE	REQUIRED INPUT GAS PRESSURE	GAS TYPE	BURNER EFFICIENCY
3	MVA-1	109587	100850	50°F	7 IN. W.C. - 14 IN. W.C.	NATURAL	92

FAN OPTIONS

FAN UNIT NO	TAG	QTY	DESCRIPTION
1	EF-1	1	GEAR BOX
1	EF-1	1	REVERSE ENGINE KIT LABEL FROM THE FAN BASE
1	EF-2	1	2 YEAR PARTS WARRANTY
1	EF-2	1	ECM WIRING PACKAGE - MANUAL OR 0-DIGIT REFERENCE SPEED CONTROL - RTIC - FIELD MOUNTED, CCM ROTATION
2	EF-2	1	2 YEAR PARTS WARRANTY
1	EF-2	1	WINDLIFT PROTECTANT DAMPER FOR AI-B HOUSING - MEETS AMCA CLASS 1A RATING
1	EF-2	1	INLET PRESSURE GAUGE, 0-35"
1	EF-2	1	MANIFOLD PRESSURE GAUGE, -5 TO 15" W.C.
1	EF-2	1	SEPARATE 180V WIRING PACKAGE (REQUIRED AND USED ONLY FOR DCV OR PRE-WIRE WITH UNIT MOUNTED WITH FIBER WITH GEKWB3
1	EF-2	1	2 YEAR PARTS WARRANTY

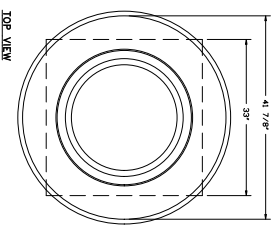
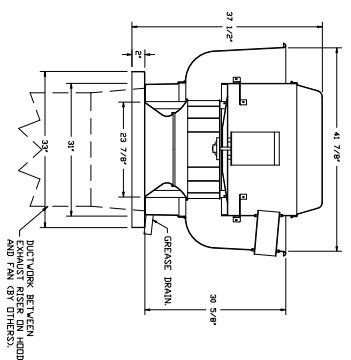
FAN ACCESSORIES

FAN UNIT NO	TAG	DESCRIPTION	SIZE
1	EF-1	GEAR BOX	1.5"
1	EF-1	REVERSE ENGINE KIT LABEL	1.5"
1	EF-2	2 YEAR PARTS WARRANTY	
1	EF-2	ECM WIRING PACKAGE	
1	EF-2	WINDLIFT PROTECTANT DAMPER	
1	EF-2	INLET PRESSURE GAUGE	
1	EF-2	MANIFOLD PRESSURE GAUGE	
1	EF-2	SEPARATE 180V WIRING PACKAGE	
1	EF-2	2 YEAR PARTS WARRANTY	

CURB ASSEMBLIES

NO	DN	TAG	WEIGHT	ITEM	SIZE
1	# 1	FAN	43 LBS	3150V X 31.500" X 28.000" ALONG LENGTH, RIGHT	VENTED
2	# 2	EF-2	51 LBS	3150V X 31.500" X 28.000" ALONG LENGTH, RIGHT	INSULATED
3	# 3	MVA-1	63 LBS	2100V X 21.000" X 20.000" ALONG WIDTH, RIGHT	INSULATED

FAN M. BUREKWA - EXHAUST FAN (EF-1)

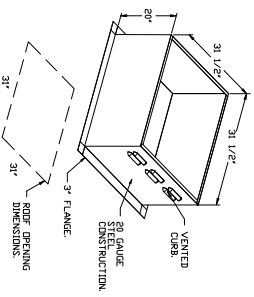


FEATURES:

- DIRECT DRIVE CONSTRUCTION AND BELT/PULLEYS.
- RIGID MOUNTING POINT.
- RESTRAINT POINTS IN U.C.-9445
- VARIABLE SPEED CONTROL.
- INTERNAL WINDING PROTECTION, GROUND PHASE.
- HIGH HEAT PROTECTION 300° (149°).
- GEAR OIL CLASSIFICATION TESTING.
- RPM 30 SAFETY DISCONNECT SWITCH.
- NOMINAL TEMPERATURE TEST.
- 100% EFFICIENCY TEST.
- THERMAL EQUILIBRIUM TEST.
- THERMAL EQUILIBRIUM TEST WITH EXHAUSTING AIR AT 300° (149°).
- THERMAL EQUILIBRIUM TEST WITHOUT ANY DETERMINING EFFECTS TO THE FAN WHICH WOULD AFFECT THE TEST.
- 3" FLANGE.
- 2" YEAR PARTS WARRANTY.

DETAILS:

- GEAR BOX.
- REVERSE ENGINE KIT LABEL FROM THE FAN BASE.
- 2 YEAR PARTS WARRANTY.

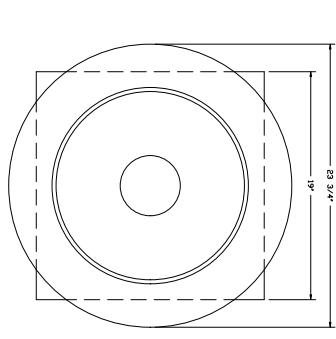
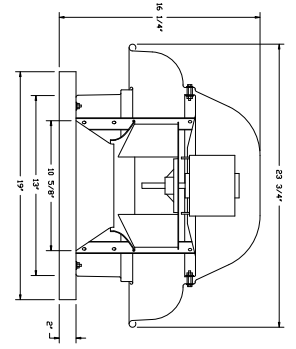


REVISIONS
 DATE: _____
 BY: _____
 APPROVED: _____
 CAPTIVEAIR
 Highwoods Group
 4641 Paragon Park Rd., Raleigh, NC, 27616 PHONE: (919) 875-0420 FAX: (919) 875-0577 EMAIL: reg40@captiveair.com

CHIPOTLE SANDTOWN # 4492
 ATLANTA, GA, 30331

DATE: 9/26/2022
 DWG.#: 5658615
 DRAWN BY: JMB-40
 SCALE: 3/4" = 1'-0"
 MASTER DRAWING

FAN 42 1000RFA - EXHAUST FAN SPEC 23

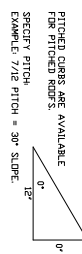
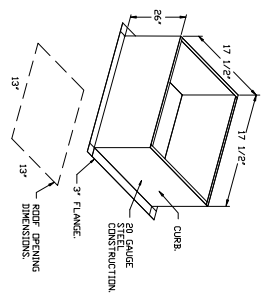


TOP VIEW

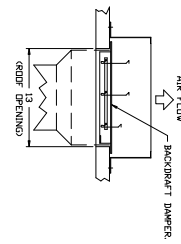
FEATURES:

- INSERT BOWL CONSTRUCTION
- 400 BELT PULLEYS
- ROOF MOUNTED FANS
- SAFETY DISCONNECT
- STANDARD 3RD SCREEN
- SPEED CONTROL

DETAILS:
 1-12" 3RD SCREEN
 1-30 GAUGE 2" MANUAL OR
 1-30 GAUGE 2" ELECTRIC SPEED CONTROL
 2-TEAR PANTS W/ASSAULT



BACKDRAFT DAMPER INSTALLATION



PITCHED CURBS ARE AVAILABLE FOR PITCHED ROOFS
 SPECIFY PITCH
 EXAMPLE 7/12 PITCH = 30° SLOPE

NO.	REVISIONS	DATE

CAPTIVEAIR
 Highwoods Group
 www.captiveaire.com

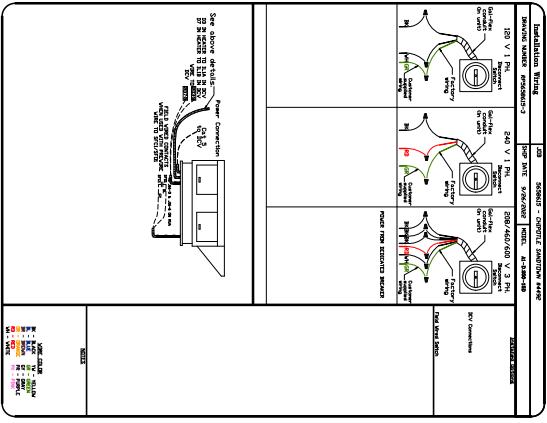
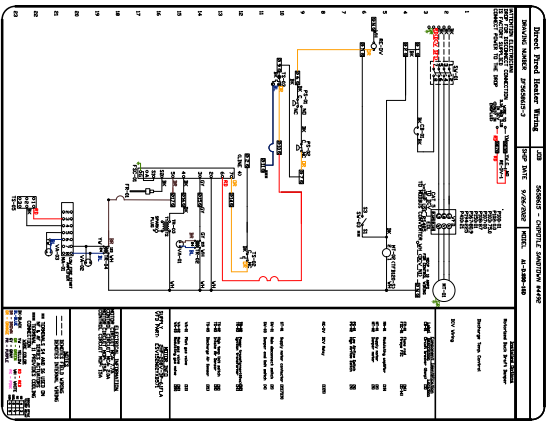
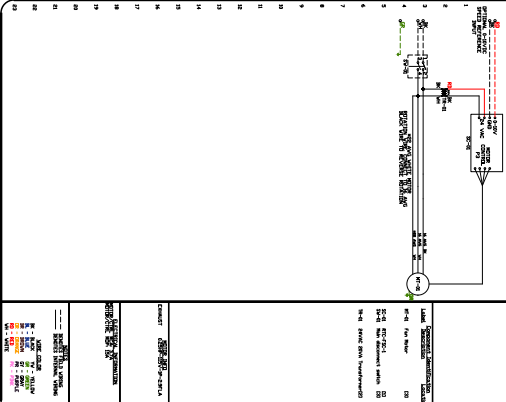
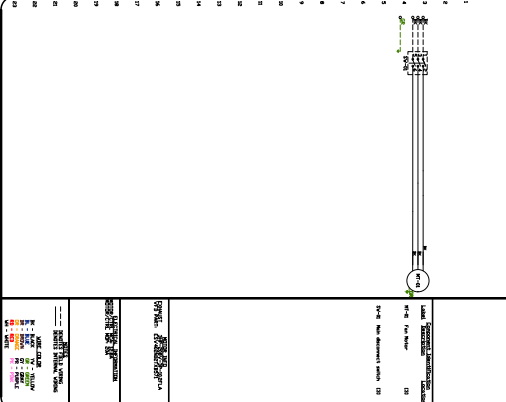
4641 Paragon Park Rd., Raleigh, NC, 27616 PHONE: (919) 875-0420 FAX: (919) 875-0577 EMAIL: req40@captiveaire.com

CHIPOTLE SANDTOWN #4492
 ATLANTA, GA, 30331

DATE: 9/26/2022
 DWG.#: 5658615
 DRAWN BY: JMB-40
 SCALE: 3/4" = 1'-0"
 MASTER DRAWING

SHEET NO. 5

REVISIONS	DATE	BY	DESCRIPTION



REVISIONS	DATE	BY	DESCRIPTION

CAPTIVEAIR
Highwoods Group
www.captiveaire.com

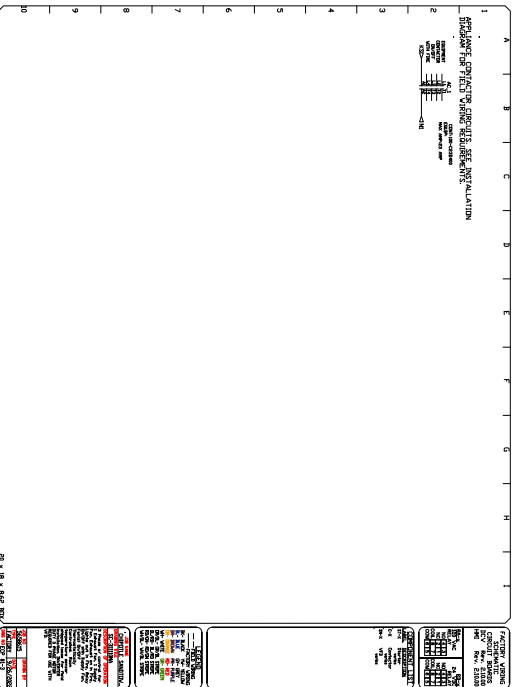
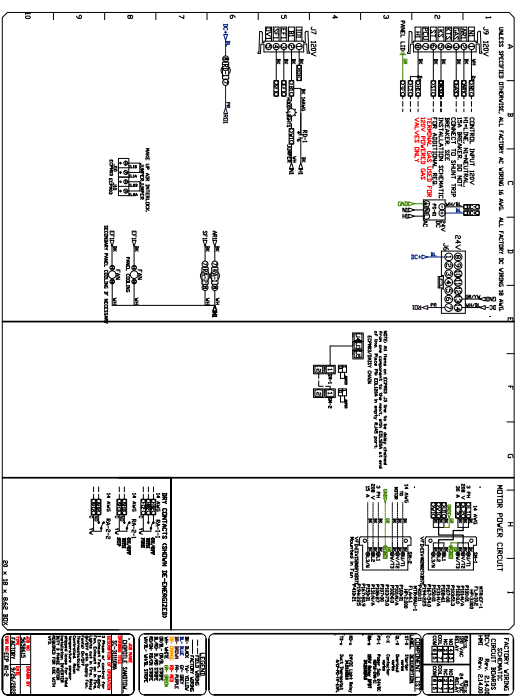
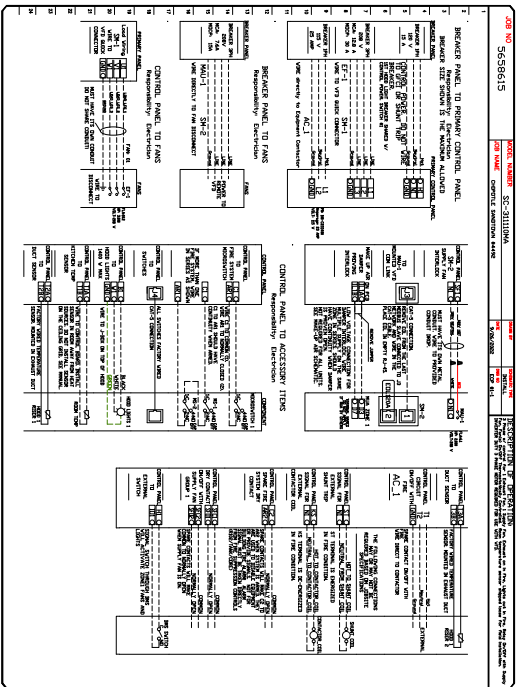
CHIPOTLE SANDTOWN # 4492
ATLANTA, GA, 30331

DATE: 9/26/2022
DWG.#: 5658615
DRAWN BY: JMB-40
SCALE: 3/4" = 1'-0"
MASTER DRAWING

SHEET NO. 7

NO	PACKAGE #	LOCATION	SWITCHES	QUANTITY	OPTION	FAN TAG	TYPE	HP	VOL	FLA
1	SC-31100A	UTILITY CABINET RIGHT	1 UNIT	SMART CONTROL 3, 110VAC/115VAC	SMART CONTROL 3, 110VAC/115VAC	NO. 1	CONV	3	200V	208/242

NO	DESCRIPTION	DATE
1	REVISIONS	
2		
3		
4		
5		
6		
7		
8		
9		
10		



CAPTIVE WIRE
Highwoods Group
www.captivewire.com

4641 Paragon Park Rd., Raleigh, NC, 27616 PHONE: (919) 875-0420 FAX: (919) 875-0577 EMAIL: reg40@captivewire.com

CHIPOTLE SANDTOWN # 4492
ATLANTA, GA, 30331

DATE: 9/26/2022
DWG.#: 5658615
DRAWN BY: JMB-40
SCALE: 3/4" = 1'-0"
MASTER DRAWING

SHEET NO. 8