

Report By:

National TAB
1329 E. KEMPER ROAD
SUITE 4210
CINCINNATI, OH 45246



Report: TAB Punchlist
Function: Test, Adjust, & Balance
Date: 02/18/2025
Completed By: National TAB

PROJECT
02-17-25 CULVERS ALMA, MI

7520 N ALGER RD

ALMA , MI 48801

Client

Accurex
PO Box 410
Schofield, WI 54476

Issue List

- Missing dampers on RTU-2 (Kitchen)
- PRV-1 RR Exhaust not operational
- RTU-1 not operational

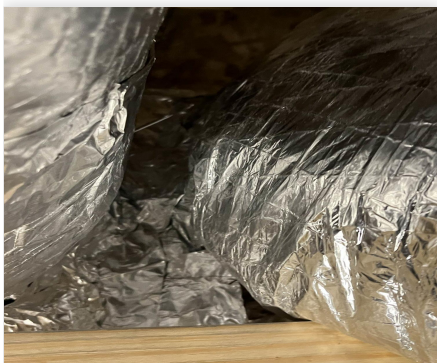


02-17-25 CULVERS ALMA, MI

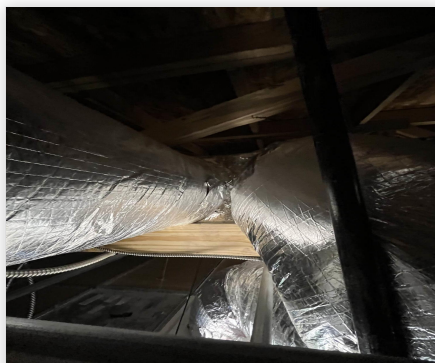
Project Issue Information

Issue Name : Missing dampers on RTU-2 (Kitchen)
Description : Diffuser 1-3,1-11,1-12 missing dampers. 1-3 is high on flow at 452/350CFM 1-11 is very high on flow at 753/350CFM unable to reduce airflow to these diffusers. Diffuser 1-12 was able to be restricted with duct straps to bring flow to design. Recommend Mechanical Contractor install dampers so these diffusers can be sufficiently balanced.
Created By : National TAB **Assigned To :** National TAB - Dylan Crisman
Status : Open
Priority : High **Asset Tag :**
Originated Date : 02/18/2025 - Dylan Crisman - National TAB

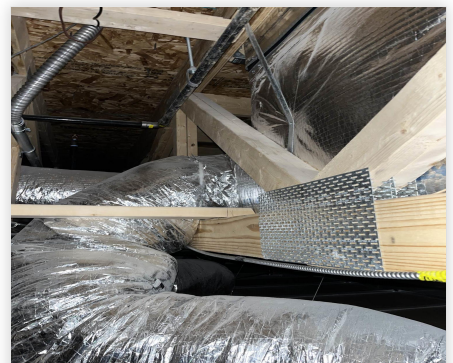
Project Issue File Details



02/18/2025



02/18/2025



02/18/2025



02-17-25 CULVERS ALMA, MI

Project Issue Information

Issue Name : PRV-1 RR Exhaust not operational
Description : PRV-1 Restroom Exhaust fan is not operational. Getting voltage at the breaker as well as at the fan but fan will not operate, motor will not kick on. Recommend electrician/mechanical inspection to diagnose problems with PRV-1.

Created By : National TAB **Assigned To :** National TAB - Dylan Crisman

Status : Open

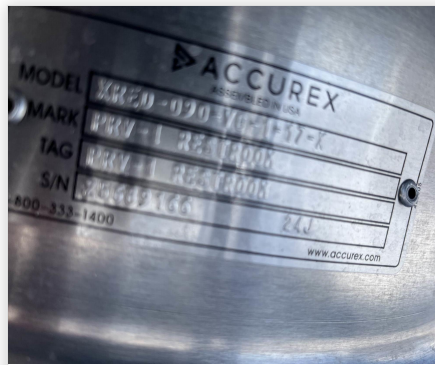
Priority : Urgent **Asset Tag :**

Originated Date : 02/18/2025 - Dylan Crisman - National TAB

Project Issue File Details



02/18/2025



02/18/2025



02/18/2025



02-17-25 CULVERS ALMA, MI

Project Issue Information

Issue Name : RTU-1 not operational
Description : RTU-1 (Dining Unit) is not operational due to an electrical wiring issue, the control board has shorted out. We were able to get an initial airflow reading before the unit shut down but were unable to balance diffusers, total airflow, and OA airflow to design. Captive aire is scheduled by the GC to be here tomorrow to diagnose and correct RTU-1.

Created By : National TAB **Assigned To :** National TAB - Dylan Crisman
Status : Open
Priority : Urgent **Asset Tag :**
Originated Date : 02/18/2025 - Dylan Crisman - National TAB

Project Issue File Details



02/18/2025



02/18/2025



02/18/2025