



Comfort. Under control.

## GSA DC0021ZZ Central Office Headquarters (Washington, DC)

### CheckList Information


<b>Name :</b>	OAH S-1	<b>Status :</b>	NotSubmitted
<b>Assigned Organization :</b>	National TAB	<b>Asset :</b>	
<b>Requesting Organization :</b>	National TAB		

### CheckList Item Details

**AHU Measurement NOVA Third Party Contractor Fill Out. Measure and verify the building minimum and maximum outdoor air for each AHU providing outdoor air to the building.**

Supply Air CFM Measured:	100 % OA 10397 CFM
Confirm DCV is Disabled (Demand Controlled Ventilation)	The demand controlled ventilation was confirmed disabled.
Outside Air Measurement Method (Direct PT or SA-RA PT)	Velocity Grid
Outside Air CFM Measured: (Maximum and Minimum OA CFM)	100 % OA 10397 CFM
If Outside Air CFM is determined by Supply - Return air CFM, document the Measured Return Air CFM:	NA
BAS Setpoint. Document BAS Setpoint at time of testing. Include Outside Air Damper Setpoint BAS shows.	Original Set Point was 1.0" Increased to 2.5". 100 % OA Unit
BAS Screenshot. Request Facility Team to save screenshots of the BAS screen for each AHU (thumb drive) and GSA or O&M upload to the google drive.	Attached
Document Actual Observed Outside Air Damper Position. [Visual % Open: 0%, 25%, 75%, 100%.]	100%
Does AHU have full air side economizer?	100 % OA Unit
<b>AHU Information &amp; Verification. Include Photo Documentation</b>	
Attach Photos of AHU Nameplate.	Yes
Pre-Filter MERV Rating (or NA)	The pre-filter MERV rating are MERV 8

Pre-Filter Size	The pre filter size is 20x24x4
Final Filter MERV Rating	The final filter has a MERV 14 rating.
Final Filter Size	The unit's final filter size is 20x20x4
Belts - Visual Assessment of condition	After a visual assessment the belts condition are good.
Belts - Size and quantity	This unit has 2 5VX730 belts
Note any modifications made to AHU set points to operate in full capacity.	Original Set Point was 1.0" Increased to 2.5".
Note if the AHU has full air side economizing ability & Damper Type.	100 % OA Unit
Electrical connections - Visual assessment. Document motor Voltage and Amperage.	Motor Voltage- 437 V VFD Amperage-18.3 A VFD
Heating Coil(s) - Visual assessment and photo documentation.	The heating coil condition looks good
Cooling Coil(s) - Visual assessment and photo documentation.	The cooling coil condition looks good.
Condensate Pan(s) - Visual assessment and photo documentation.	Condensate pan is clean.
Any unusual operation observed? (including vibration, over-pressure, etc.)	There are no unusual operational concerns.
Exhaust System Status (on/off). If this does not apply for this AHU, "N/A"	This unit does have an exhaust system but it was off.
Visually inspect outdoor air intake louvers, bird screens, mist eliminators, and adjacent areas for cleanliness and integrity.	Intake louvers has some dirt on them.
Note ALL visible debris or visible biological material observed, physical damage to louvers, screens, or mist eliminators, and if such damage impairs the item from providing the required outdoor air entry.	There were some debris on the bird screen.
List any found deficiencies. Note any remarks or comments, including corrective actions. Include photo documentation of any relevant findings.	No other deficiencies for this unit besides what was described above.



**GSA\_HQ\_OAHU-S1**

**Monday, December 13, 2021**

**12 Remarks Identified**

---

AHU-S1



S1 pre-filters



S1- Final filters



S1- Heating Wheel



HEATING WHEEL OTHER SIDE



S1- Preheat





S1 VFD



BELT SHAFT



S-1 BELTS



0AHUS2

EXHAUST AIR



0AHUS1 OAH 38.22 %

0AENTHALPY 16.00    RAENTHALPY 30.24

0A RA ENTH DIF 3.74

ERW ENT DIF OFF 1.00 °F    ERW ENT DIF ON 2.00 °F

0AENTH RAENTH EN OFF

ERW OAT OFF 52.00 °F    ERW OAT ON 50.00 °F

OAT EN OFF

MIX DEW PT 24.84

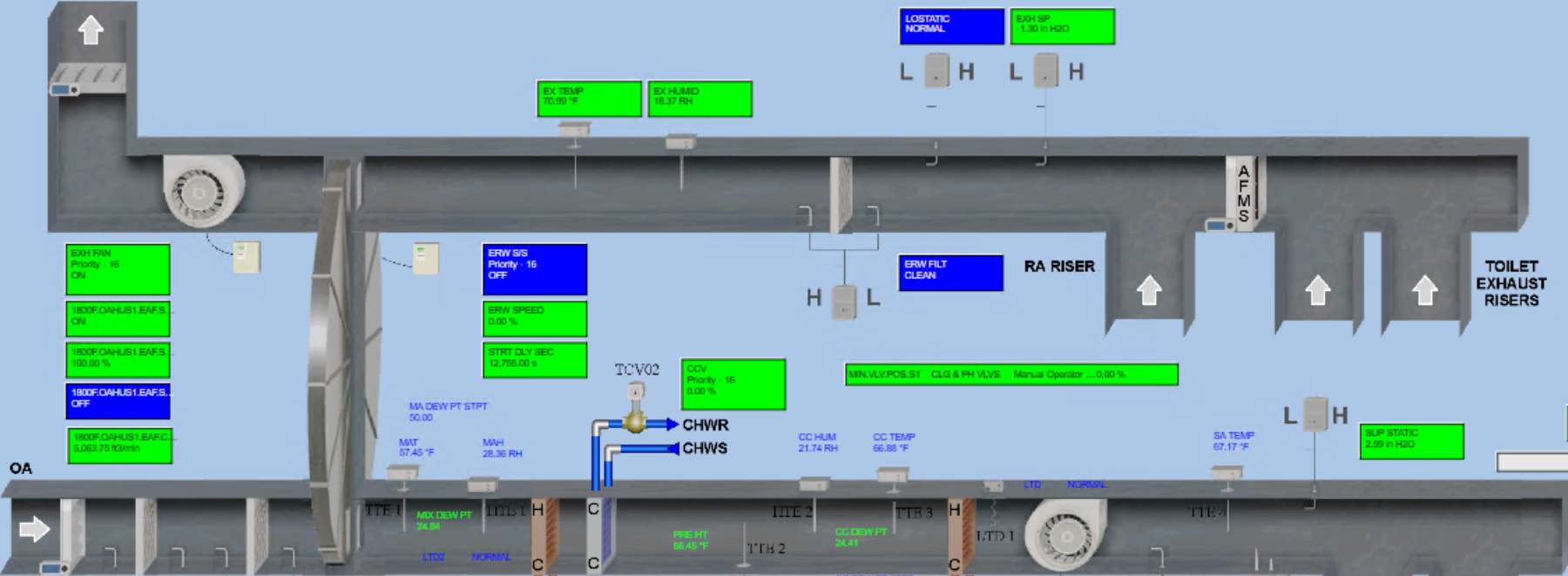
MA DHUM OFF 50.00    MA DHUM ON 52.00

DHUM STRT Priority - 16 OFF

DEHUM ENAB Priority - 16 OFF

OUTDOOR CO2 733.20 ppm

OA



1800F 0AHUS1 RAND ONT 53.78 °F

PRE FILT CLEAN

FINAL FILT CLEAN

1800F 0AHUS1 LTDX Normal Priority - 16 OFF

HEAT COIL P Priority - 16 OFF

RHV TCV01 Priority 16 0.00 %

BPV CV01 Priority 16 0.00 %

RHV CV02 Priority 16 0.00 %

LOSTATIC NORMAL

EXH SP 1.30 in H2O

L H    L H

ERW FILT CLEAN

RA RISER

TOILET EXHAUST RISERS

ERW SIG Priority 16 OFF

ERW SPEED 0.00 %

STRT CLY SEC 12.755.00 s

TCV02

CDV Priority 16 0.00 %

MN VLV POS S1 CLG & PH VLVs Manual Operator ... 0.00 %

CHWR

CHWS

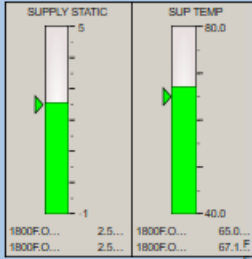
CC HUM 21.74 RH

CC TEMP 66.88 °F

SA TEMP 67.17 °F

SUP STATIC 2.59 in H2O

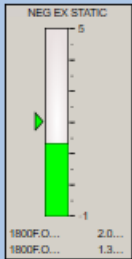
1800F 0AHUS1 SSPSTPTR 1.00 in H2O



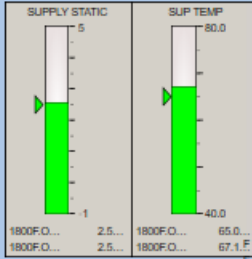
0AHUS1 MODE Priority 15 OCC

0AHUS1 EN Priority 15 ON

0AHUS1 SHDN Priority 16 OFF



1800F 0AHUS1 SSPSTPTR 1.00 in H2O



CLG STPT 65.00

OAT CL OFF 63.00

OAT CL ON 65.00

CLG MOD OFF

HTG STPT 65.00

OAT MAT HT OFF 62.00

OAT MAT HT ON 60.00

HTG MOD ON



## GSA DC0021ZZ Central Office Headquarters (Washington, DC)

### CheckList Information

<b>Name :</b>	OAH S-2	<b>Status :</b>	NotSubmitted
<b>Assigned Organization :</b>	National TAB	<b>Asset :</b>	
<b>Requesting Organization :</b>	National TAB		

### CheckList Item Details


**AHU Measurement NOVA Third Party Contractor Fill Out. Measure and verify the building minimum and maximum outdoor air for each AHU providing outdoor air to the building.**

Supply Air CFM Measured:	10407 CFM 100 % OA
Confirm DCV is Disabled (Demand Controlled Ventilation)	DVC is disabled.
Outside Air Measurement Method (Direct PT or SA-RA PT)	Since the unit is a 100% Outdoor air unit the supply duct was traversed to obtain total outdoor air flow
Outside Air CFM Measured: (Maximum and Minimum OA CFM)	10407 CFM 100 % OA
If Outside Air CFM is determined by Supply - Return air CFM, document the Measured Return Air CFM:	This does not apply, unit is 100% OA
BAS Setpoint. Document BAS Setpoint at time of testing. Include Outside Air Damper Setpoint BAS shows.	Original Set Point was 1.0" Increased to 2.8". 100 % OA Unit
BAS Screenshot. Request Facility Team to save screenshots of the BAS screen for each AHU (thumb drive) and GSA or O&M upload to the google drive.	Attached
Document Actual Observed Outside Air Damper Position. [Visual % Open: 0%, 25%, 75%, 100%.]	100 % OA Unit
Does AHU have full air side economizer?	100 % OA Unit

### **AHU Information & Verification. Include Photo Documentation**

Attach Photos of AHU Nameplate.	Yes
Pre-Filter MERV Rating (or NA)	The Pre-filter MERV rating is a MERV 8.
Pre-Filter Size	Pre-filter size is 20x20x2

Final Filter MERV Rating	Final filter rating is a MERV 14/14A
Final Filter Size	Final filter size is 20x20x4
Belts - Visual Assessment of condition	The belts look to be in good condition.
Belts - Size and quantity	BX-70 x3
Note any modifications made to AHU set points to operate in full capacity.	Original Set Point was 1.0" Increased to 2.8". 100 % OA Unit
Note if the AHU has full air side economizing ability & Damper Type.	Not applicable, the unit brings in 100% OA
Electrical connections - Visual assessment. Document motor Voltage and Amperage.	Motor voltage-460 V VFD Amperage-18.7 A VFD
Heating Coil(s) - Visual assessment and photo documentation.	The heating coil is in good condition.
Cooling Coil(s) - Visual assessment and photo documentation.	The cooling coil is in good condition.
Condensate Pan(s) - Visual assessment and photo documentation.	The condensate pan looks clean.
Any unusual operation observed? (including vibration, over-pressure, etc.)	There were no unusual operational concerns.
Exhaust System Status (on/off). If this does not apply for this AHU, "N/A"	The exhaust system was on during operation.
Visually inspect outdoor air intake louvers, bird screens, mist eliminators, and adjacent areas for cleanliness and integrity.	Outdoor intake louver had some dirt.
Note ALL visible debris or visible biological material observed, physical damage to louvers, screens, or mist eliminators, and if such damage impairs the item from providing the required outdoor air entry.	There was small debris at the outdoor intake louver.
List any found deficiencies. Note any remarks or comments, including corrective actions. Include photo documentation of any relevant findings.	There are no other deficiencies for this unit.



**GSA\_HQ\_OAHU-S2**

**Tuesday, December 21, 2021**

**12 Remarks Identified**

---

AHU-S2



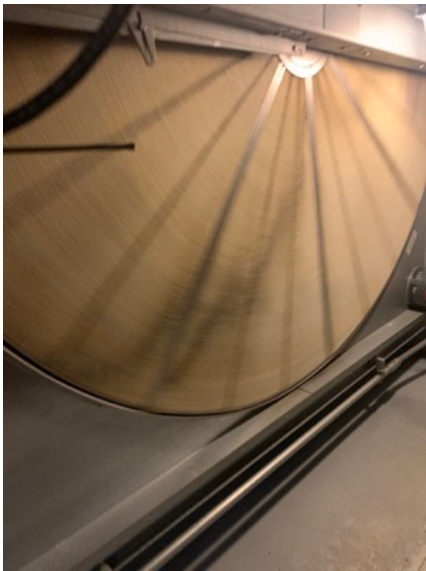
PRE-FILTER



FINAL FILTER



HEAT WHEEL



HEAT WHEEL



HEATING COIL



HEATING COIL



COOLING COIL



CONDENSATE PAN



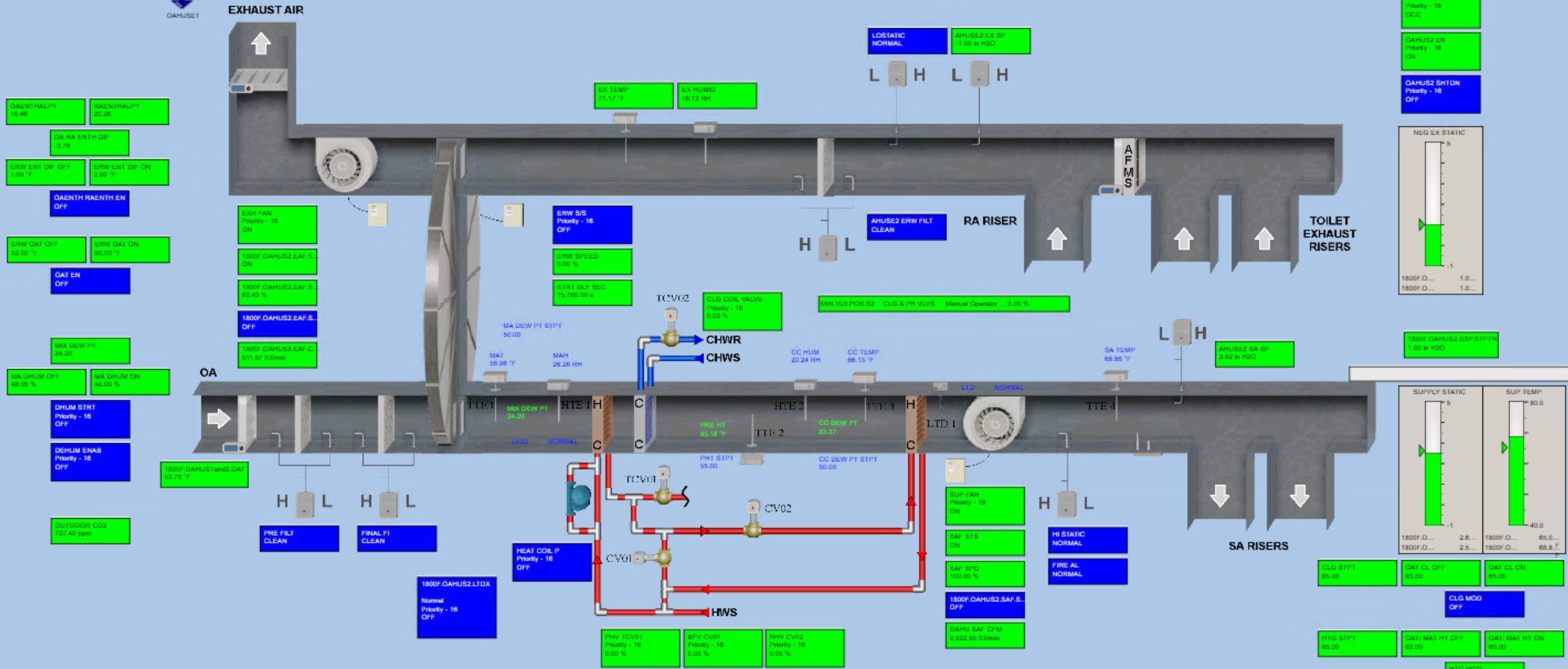
BELTS



FLOW STATION



OA INTAKE LOUVER





Comfort. Under control.

## GSA DC0021ZZ Central Office Headquarters (Washington, DC)

### CheckList Information

<b>Name :</b>	OAH SE-1	<b>Status :</b>	NotSubmitted
<b>Assigned Organization :</b>	National TAB	<b>Asset :</b>	
<b>Requesting Organization :</b>	National TAB		

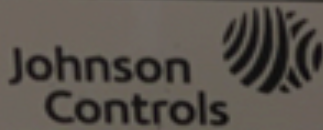
### CheckList Item Details

**AHU Measurement NOVA Third Party Contractor Fill Out. Measure and verify the building minimum and maximum outdoor air for each AHU providing outdoor air to the building.**

Supply Air CFM Measured:	9,728 CFM 100 % OA
Confirm DCV is Disabled (Demand Controlled Ventilation)	The DVC control is disabled.
Outside Air Measurement Method (Direct PT or SA-RA PT)	This Unit strictly serves outside air only so it was traversed directly.
Outside Air CFM Measured: (Maximum and Minimum OA CFM)	9,728 CFM
If Outside Air CFM is determined by Supply - Return air CFM, document the Measured Return Air CFM:	100 % OA
BAS Setpoint. Document BAS Setpoint at time of testing. Include Outside Air Damper Setpoint BAS shows.	Original Set Point was 1.0" Increased to 2.2". 100 % OA
BAS Screenshot. Request Facility Team to save screenshots of the BAS screen for each AHU (thumb drive) and GSA or O&M upload to the google drive.	Attached
Document Actual Observed Outside Air Damper Position. [Visual % Open: 0%, 25%, 75%, 100%.]	100 % OA
Does AHU have full air side economizer?	No
<b>AHU Information &amp; Verification. Include Photo Documentation</b>	
Attach Photos of AHU Nameplate.	Yes
Pre-Filter MERV Rating (or NA)	The Pre-filter MERV rating is a MERV 8.
Pre-Filter Size	AHU-SE1 pre filter size are 20x25x4.

Final Filter MERV Rating	The final filter MERV ratings is MERV 14
Final Filter Size	The unit filter size is 20x20x4
Belts - Visual Assessment of condition	After visual assessment the belts look to be in good condition but the 2 outer belts are a little loose.
Belts - Size and quantity	The unit has 3 BX-38 belts.
Note if the AHU has full air side economizing ability & Damper Type.	100 % OA
Note if any modifications made to AHU set points to operate in full capacity.	Original Set Point was 1.0" Increased to 2.2".
Electrical connections - Visual assessment. Document motor Voltage and Amperage.	Motor Voltage- 460 V VFD Amperage - 17.1 A VFD
Heating Coil(s) - Visual assessment and photo documentation.	After visual assessment the pre heat coil is in good condition but the re-heat coil has some bent fins.
Cooling Coil(s) - Visual assessment and photo documentation.	The unit cooling coils is in good condition.
Condensate Pan(s) - Visual assessment and photo documentation.	The condensate pan is clean.
Any unusual operation observed? (including vibration, over-pressure, etc.)	There are no unusual operations for this unit.
Exhaust System Status (on/off). If this does not apply for this AHU, "N/A"	The unit exhaust system is on.
Visually inspect outdoor air intake louvers, bird screens, mist eliminators, and adjacent areas for cleanliness and integrity.	There is a little bit of debris by the outdoor air intake louver
Note ALL visible debris or visible biological material observed, physical damage to louvers, screens, or mist eliminators, and if such damage impairs the item from providing the required outdoor air entry.	After inspection there were no sign of foreign agents present on the unit.
List any found deficiencies. Note any remarks or comments, including corrective actions. Include photo documentation of any relevant findings.	

causa de herida.



# YORK Solution XT

MODEL #		COM: 156164
XTI-051X093-FFMJ046A		
SERIAL # / DATE CODE	JOB IDENTIFICATION #	
CAYM XT0063	1E-130089-30-01	
SEGMENT IDENTIFICATION		
(FS-HC)(CC)(HC-XA)(HW1)(XA-RF)(MB)(FM-XA)(XA-FE)		
<b>SKID 4 of 8</b>	UNIT TAG	
JOB NAME	OAHU-SE1	
1800 F St- Network- 2 Nov 11	SKID OVERALL SIZE	
	57 H x 93 W x 42 L	

## OAHU-SE1

Estimated Weight:

# H 600

GSA\_HQ\_OAHUSE-1

Tuesday, December 21, 2021

12 Remarks Identified

### Rigging

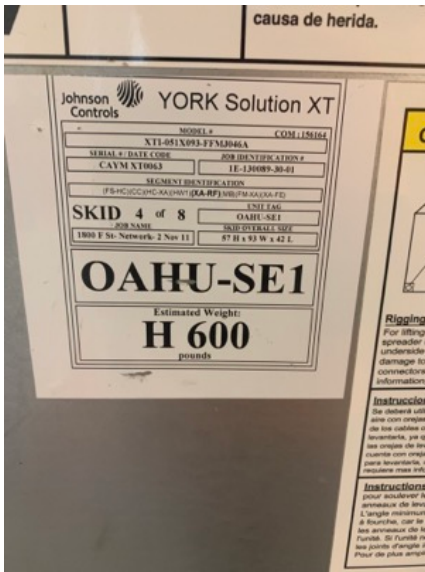
For lifting spreader bars underside damage to connectors, information,

### Instrucción

Se deberá utilizar...  
aire con orejas de los cables o levantarla, ya que las orejas de lev... cuenta con orejas para levantarla, n... requiere mas info...

### Instructions

pour soulever le...  
anneaux de leva...  
L'angle minimum...  
à fourche, car le...  
les anneaux de le...  
l'unité. Si l'unité ne...  
les joints d'angle in...  
Pour de plus ample...



NAMEPLATE



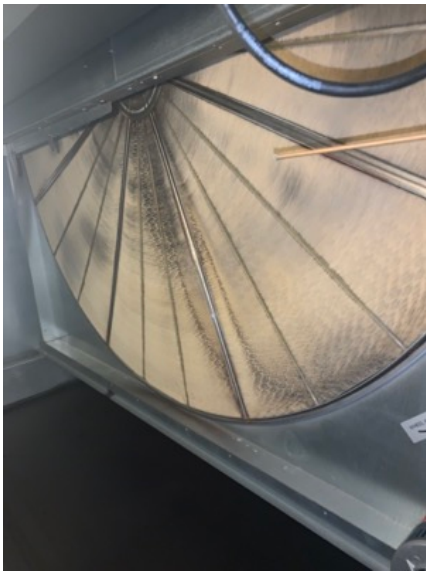
PRE-FILTER



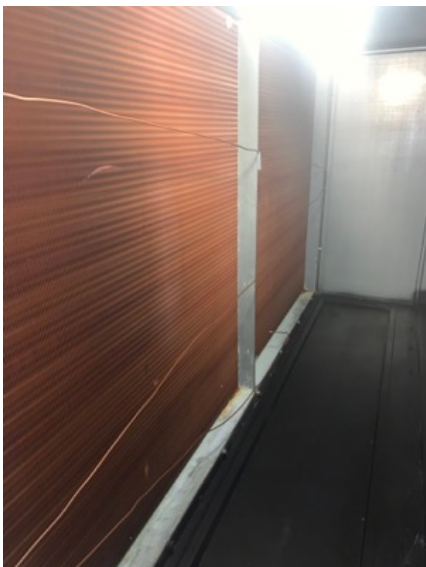
FINAL FILTER



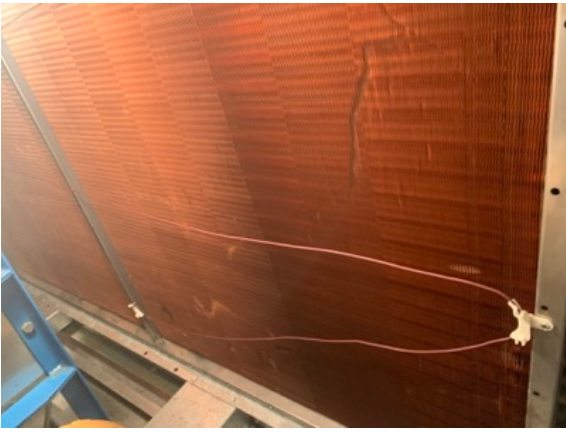
HEATING WHEEL  
There is a little bit of damage



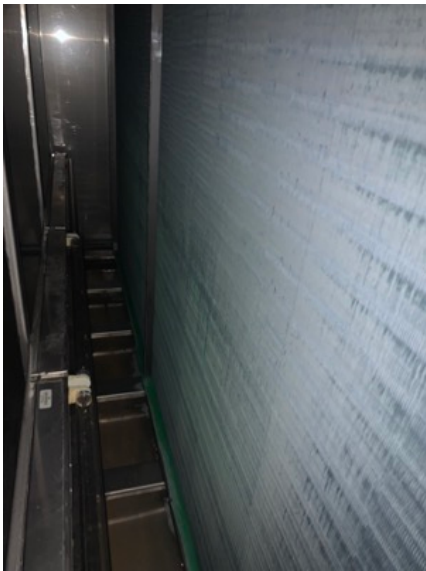
HEATING WHEEL



HEATING COIL



HEATING COIL



COOLING COIL



CONDENSATE PAN



BELTS



VFD

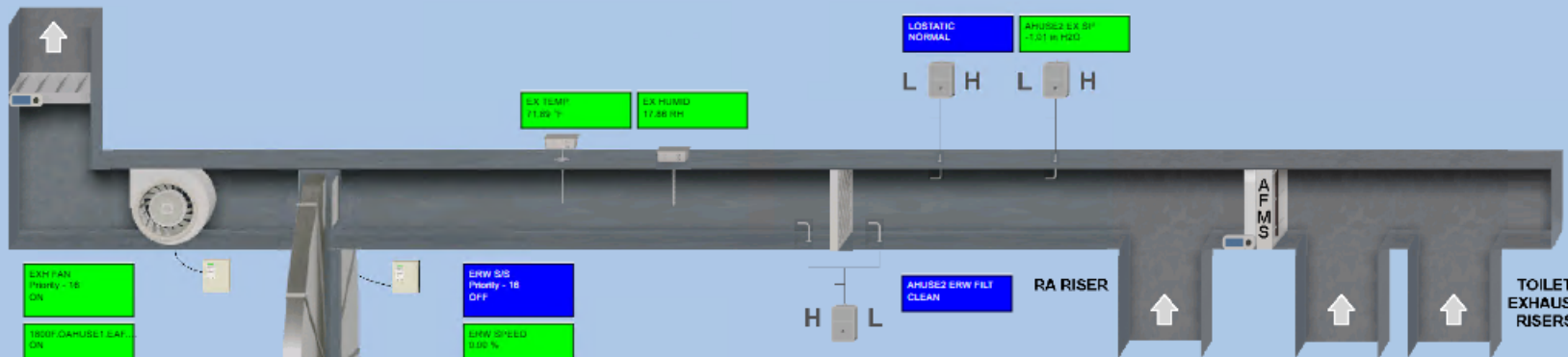


FLOW STATION



OAHOUSE2

EXHAUST AIR



DAINTHALTY 18.27

TRDINTHALTY 22.48

OA RA ENTH DP 4.38

ERW EN1 DP OFF 1.00 °F

ERW EN1 DP ON 2.00 °F

OAEN RAEN EN OFF

ERW DAT OFF 12.00 °F

ERW DAT ON 30.00 °F

OAT EN OFF

RAK DEW PT 30.91

MA HUMID ON 50.00 %

OHUM STKT Priority - 16 OFF

DEHUM ENAB Priority - 16 OFF

OUTDOOR CO2 737.80 ppm

EXH FAN Priority - 16 ON

1800F.OAHUSE1.EAF ON

1800F.OAHUSE1.EAF 35.12 %

1800F.OAHUSE1.EAF OFF

1800F.OAHUSE1.EAF 35.12 %

1800F.OAHUSE1.EAF OFF

ERW S/S Priority - 16 OFF

ERW SPEED 0.00 %

EXH DUF SEC 38.985.00 s

TCV02

CLG COIL VALVE Priority - 16 0.00 %

RAK DEW PT 30.91

MA DEW PT STPT 50.00

MA HUMID ON 50.00 %

RAH 24.08 RH

CC HUM 21.48 RH

CC TEMP 82.18 °F

SA TEMP 84.36 °F

APHOUSE2 SA SP 2.29 W H2O

1800F.OAHUSE1.SSP STPTX 1.00 W H2O

RAK DEW PT 30.91

MA DEW PT STPT 50.00

MA HUMID ON 50.00 %

RAH 24.08 RH

CC HUM 21.48 RH

CC TEMP 82.18 °F

SA TEMP 84.36 °F

APHOUSE2 SA SP 2.29 W H2O

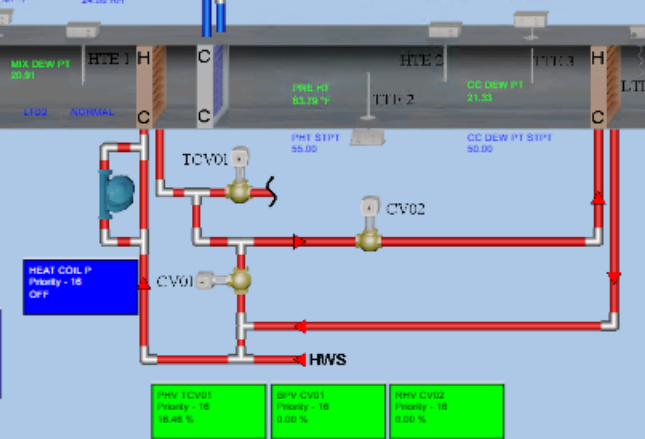
1800F.OAHUSE1.SSP STPTX 1.00 W H2O

1800F.OAHUSE1.WNDG DAT 32.38 °F

PRE FILT CLEAN

FINAL FI CLEAN

1800F.OAHUSE1.LTDK Normal Priority - 16 OFF



SAF S/S Priority - 16 ON

SAF S/S ON

SAF SPD 20.00 %

SAF S/S ALM OFF

GARU SAF CFM 9.385 F5 33mm

H1 STA1 NORMAL

FIRE AL NORMAL

1800F.OAHUSE1.SSP STPTX 1.00 W H2O

SUPPLY STATIC

SUP TEMP

CLG STPT 85.00

DAT CLOFF 82.00

DAT CL ON 85.00

CLG MOD OFF

PHG STPT 85.00

DAT1 SAK HE DPT 82.00

DAT1 MAT HT ON 80.00

PHG MOD ON



Comfort. Under control.

## GSA DC0021ZZ Central Office Headquarters (Washington, DC)

### CheckList Information

**Name :** OAH SE-2 **Status :** NotSubmitted  
**Assigned Organization :** National TAB **Asset :**  
**Requesting Organization :** National TAB

### CheckList Item Details

**AHU Measurement NOVA Third Party Contractor Fill Out. Measure and verify the building minimum and maximum outdoor air for each AHU providing outdoor air to the building.**

Supply Air CFM Measured: SAME AS OA 10,388 CFM

Confirm DCV is Disabled (Demand Controlled Ventilation) YES

Outside Air Measurement Method (Direct PT or SA-RA PT) TRAVERSE OF THE SUPPLY AIR DUCT. UNIT IS 100% OA

Outside Air CFM Measured: (Maximum and Minimum OA CFM) 10,388 CFM

If Outside Air CFM is determined by Supply - Return air CFM, document the Measured Return Air CFM: NOT APPLICABLE. UNIT IS DEDICATED OA

BAS Setpoint. Document BAS Setpoint at time of testing. Include Outside Air Damper Setpoint BAS shows. Original Set Point was 1.0" Increased to 2.2". 100 % OA Unit

BAS Screenshot. Request Facility Team to save screenshots of the BAS screen for each AHU (thumb drive) and GSA or O&M upload to the google drive. Attached

Document Actual Observed Outside Air Damper Position. [Visual % Open: 0%, 25%, 75%, 100%.] 100% OPEN

Does AHU have full air side economizer? 100 % OA Unit

### **AHU Information & Verification. Include Photo Documentation**

Attach Photos of AHU Nameplate. Yes

Pre-Filter MERV Rating (or NA)	NOT LISTED ON PREFILTER. LOOKS TO BE MERV7 or 8
Pre-Filter Size	8- 20X20X2
Final Filter MERV Rating	MERV-15
Final Filter Size	8-20X20X4
Belts - Visual Assessment of condition	BELTS ARE IN GOOD CONDITION
Belts - Size and quantity	2- B44
Note if the AHU has full air side economizing ability & Damper Type.	UNIT IS 100% OA
Note if any modifications made to AHU set points to operate in full capacity.	BAS OPERATOR PUT ALL VAVS AT 100% FLOW SET-POINT. SP SET-POINT OF 1.00" WAS NOT ENOUGH TO SATISFY ALL VAVS. SP SET-POINT WAS INCREASED TO 2.20" TO SATISFY ALL VAVS WITH FAN SPEED AT 100%.
Electrical connections - Visual assessment. Document motor Voltage and Amperage.	CONNECTIONS ARE SECURE VOLTS-460V AMPS-16.6A
Heating Coil(s) - Visual assessment and photo documentation.	HEATING COILS ARE IN GOOD CONDITION, NO DAMAGED FINS
Cooling Coil(s) - Visual assessment and photo documentation.	COOLING COILS ARE IN GOOD CONDITION. NO DAMGED FINS. SOME MINOR OXIDATION ON THE BACK SIDE
Condensate Pan(s) - Visual assessment and photo documentation.	CONDENSATE PAN IS FREE OF DEBRIS
Any unusual operation observed? (including vibration, over-pressure, etc.)	NO UNUSUAL ITEMS TONOTE
Exhaust System Status (on/off). If this does not apply for this AHU, "N/A"	UNIT HAS ERV. WHEEL IS NOT TURNING DURING TESTING

Visually inspect outdoor air intake louvers, bird screens, mist eliminators, and adjacent areas for cleanliness and integrity.


LOUVERS ARE FREE OF DAMAGE AND DEBRIS

Note ALL visible debris or visible biological material observed, physical damage to louvers, screens, or mist eliminators, and if such damage impairs the item from providing the required outdoor air entry.

There are only a few leaves stuck on the air intake louvers. Nothing that will obstruct flow significantly

List any found deficiencies. Note any remarks or comments, including corrective actions. Include photo documentation of any relevant findings.

There are no other comments or deficiencies



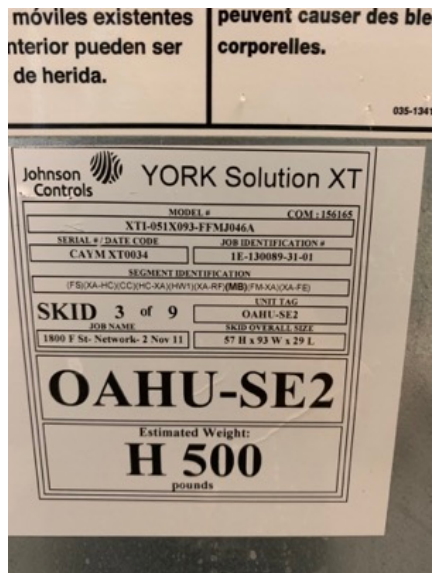
**OAHU-SE2 GSA HQ**

**Monday, December 13, 2021**

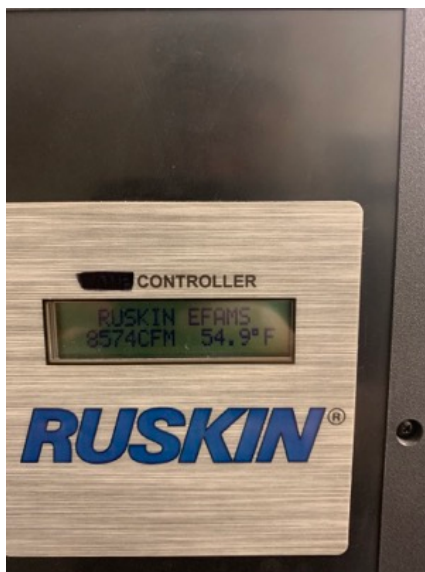
**10 Remarks Identified**



OAHU-SE2

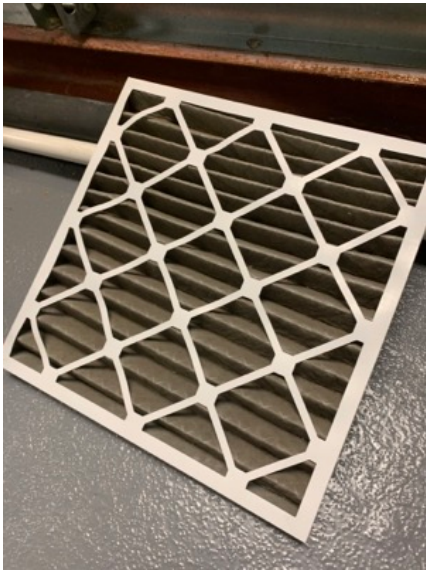


NAMEPLATE



FLOW MONITOR

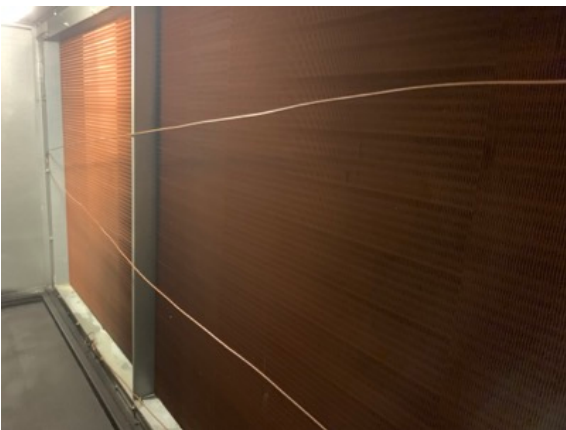
Measured flow via traverse: 10,388 CFM



PREFILTER  
Has some dirt buildup



FINAL FILTER



HEATING COIL



COOLING COIL



BELT CONDITION



CONDENSATE DRAIN



UNIT DAMPER AND OA INTAKE LOUVERS





Comfort. Under control.

## GSA DC0021ZZ Central Office Headquarters (Washington, DC)

### CheckList Information

<b>Name :</b>	AHU-ATE-1	<b>Status :</b>	NotSubmitted
<b>Assigned Organization :</b>	National TAB	<b>Asset :</b>	
<b>Requesting Organization :</b>	National TAB		

### CheckList Item Details

**AHU Measurement NOVA Third Party Contractor Fill Out. Measure and verify the building minimum and maximum outdoor air for each AHU providing outdoor air to the building.**

Supply Air CFM Measured:	Design: 8000 / Actual: 8680CFM
Confirm DCV is Disabled (Demand Controlled Ventilation)	DCV IS DISABLED
Outside Air Measurement Method (Direct PT or SA-RA PT)	DIRECT AIRFOIL MEASUREMENT OF THE OA DUCT
Outside Air CFM Measured: (Maximum and Minimum OA CFM)	Design: 2500 / Actual: 2,375 CFM / BAS DISPLAY 2504 CFM
If Outside Air CFM is determined by Supply - Return air CFM, document the Measured Return Air CFM:	N/A OA WAS MEASURED DIRECTLY
BAS Setpoint. Document BAS Setpoint at time of testing. Include Outside Air Damper Setpoint BAS shows.	OA comes from VAV.
BAS Screenshot. Request Facility Team to save screenshots of the BAS screen for each AHU (thumb drive) and GSA or O&M upload to the google drive.	Attached
Document Actual Observed Outside Air Damper Position. [Visual % Open: 0%, 25%, 75%, 100%.]	OA comes from VAV. Its damper was at 47 %
Does AHU have full air side economizer?	No                      OA comes from VAV.
<b>AHU Information &amp; Verification. Include Photo Documentation</b>	
Attach Photos of AHU Nameplate.	Yes

Pre-Filter MERV Rating (or NA)	NOT LISTED FOR 16X20X2 and for 20X20X2 FILTERS
Pre-Filter Size	3-16X20X2 3-20X20X2
Final Filter MERV Rating	6-14/14A
Final Filter Size	3-16X20X4 3-20X20X4
Belts - Visual Assessment of condition	BELTS HAVE NO CRACKS AND ARE PROPERLY TENSIONED
Belts - Size and quantity	2-BX51
Note any modifications made to AHU set points to operate in full capacity.	NO MODIFICATIONS MADE
Note if the AHU has full air side economizing ability & Damper Type.	AHU DOES NOT HAVE ECONOMIZING CAPABILITIES
Note if any modifications made to AHU set points to operate in full capacity.	NO MODIFICATIONS REQUIRED
Electrical connections - Visual assessment. Document motor Voltage and Amperage.	CONNECTIONS ARE GOOD VOLTS-368 AMPS-11.9A MAX SPEED NEEDED TO REACH DESIGN CFM IS 42 HZ
Heating Coil(s) - Visual assessment and photo documentation.	HEATING COIL IS IN GOOD CONDITION. THERE IS SOME OXIDATION ON THE FRONT SIDE
Cooling Coil(s) - Visual assessment and photo documentation.	BACK SIDE OF COOLING COIL 1 HAS OXIDATION. FRONT SIDE OF COOLING COIL 2 HAS SOME RUST ON THE FLOOR WHERE THE CONDENSATE PAN IS. BACK SIDE OF COIL 2 HAS BENT FINS
Condensate Pan(s) - Visual assessment and photo documentation.	CONDENSATE PAN IS FREE OF DEBRIS. THERE IS SOME RUST FORMING NEAR COOLING COIL 2
Any unusual operation observed? (including vibration, over-pressure, etc.)	THERE IS NO UNUSUAL OPERATION

Exhaust System Status (on/off). If this does not apply for this AHU, "N/A"

N/A THERE IS A RETURN FAN THAT SERVES ATE-1 AND ATE-2, WHEN UNITS ARE UNOCCUPIED MODE RETURN FAN OVERPOWERS SUPPLY FAN

Visually inspect outdoor air intake louvers, bird screens, mist eliminators, and adjacent areas for cleanliness and integrity.

OA IS BROUGHT IN THROUGH A VAV, VAV IS FULLY FUNCTIONAL AND UNABLE TO CHECK FOR ANY DEBRIS. RETURN PLENUM IS CLEAN WITH NO SIGNS OF ANY DEBRIS

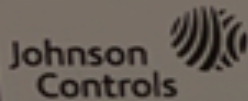
Note ALL visible debris or visible biological material observed, physical damage to louvers, screens, or mist eliminators, and if such damage impairs the item from providing the required outdoor air entry.

NO VISIBLE DEBRIS INSIDE OF THE UNIT

List any found deficiencies. Note any remarks or comments, including corrective actions. Include photo documentation of any relevant findings.

THE WINDOW IN THE RETURN PLENUM DOOR HAS A BROKEN/MISSING PANE OF GLASS. THE REMAINING PANE DOES NOT HAVE ANY LEAKAGE. WHEN THE UNIT IS IN UNOCCUPIED MODE THE RETURN FAN THAT FEEDS ATE-1/2 OVERPOWERS BOTH SUPPLY FANS. SUPPLY DUCT COULD NOT BE TRAVERSED DO TO SOUND ATTENUATION NOR COULD THE RETURNS BE READ OUT, HAD TO USE THE FLOW STATION TO USE AS THE SUPPLY TOTAL

There are no other deficiencies present for this unit.



# YORK Solution XT

UNIT ID. THIS PRODUCT MANUFACTURED FOR INDOOR USE

MODEL #		COM #
XTI-045X078-FALA046A		156073
SERIAL # / DATE CODE	JOB IDENTIFICATION #	
CAYM XT0154	1E-130089-07-01	
SEGMENT IDENTIFICATION		
(FS)(HC-CC)(XA-HC)(RF-MB)		
# OF SKIDS	UNIT TAG #	
4	AHU-ATE1	

### ELECTRICAL RATINGS

SHORT-CIRCUIT CURRENT RATING (SCCR)				
N/A				
TOTAL RATINGS (COMBINED LOADS)				
VOLTS / PH / HZ	M.C.A.	MAX. O.C. PROT.		
460/3/60				
SUPPLY FAN MOTOR RATING (INDIVIDUAL LOAD)				
HP	FLA	M.C.A.	MAX. O.C. PROT.	
15	17.7	22.12	35	
RETURN FAN MOTOR RATING (INDIVIDUAL LOAD)				
HP	FLA	M.C.A.	MAX. O.C. PROT.	
HEAT RECOVERY WHEEL MOTOR RATING (INDIVIDUAL LOAD)				
VOLTS / PH / HZ	HP	FLA	M.C.A.	MAX. O.C. PROT.
N/A	N/A	N/A	N/A	N/A
ELECTRIC HEAT RATINGS		GAS HEAT RATINGS		
N/A		N/A		
LIGHTING				
VOLTS / PH / HZ	FLA	M.C.A.	MAX. O.C. PROT.	
120/1/60	1.5	1.88	3.2	

# AHU-ATE1

## Wednesday, December 15, 2021

### 13 Remarks Identified

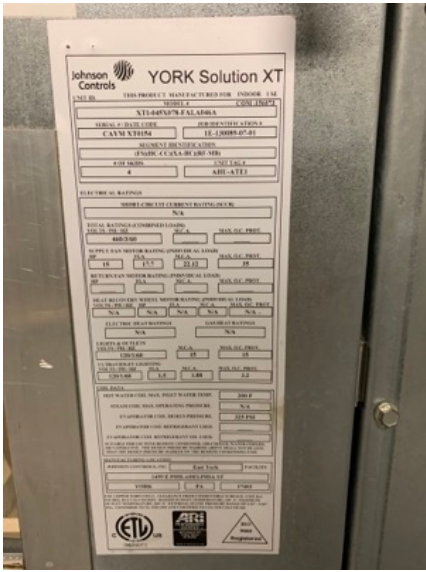
COIL DATA	
HOT WATER COIL MAX. INLET WATER TEMP.	200 F
STEAM COIL MAX. OPERATING PRESSURE	N/A
EVAPORATOR COIL REFRIGERANT USED	15 PSI
EVAPORATOR COIL REFRIGERANT OIL USED	

SUITABLE FOR USE WITH REMOTE CONDENSER, AIR-COOLED, WATER-COOLED, OR VAPORATIVE. THE DESIGN PRESSURE MARKED ABOVE SHALL NOT BE LESS THAN THE DESIGN PRESSURE MARKED ON THE REMOTE CONDENSING UNIT.

MANUFACTURING LOCATION		
JOHNSON CONTROLS	East York	FACILITY
YORK	ADELPHI ST	
	PA	17403

THE COPPER WORKS ONLY. CLEARANCE FROM COMBUSTIBLE SURFACE, UNIT IS 6 INCHES, DUCT IS 4 INCHES. MAXIMUM INLET TEMPERATURE, 100° F; MAXIMUM OUTLET TEMPERATURE, 200° F. EXTERNAL STATIC PRESSURE RANGE OF 0.15" - 2.0" W.G. CONFORMS TO UL STD 1009 AND CERTIFIED TO UL STD 212 NO 126.

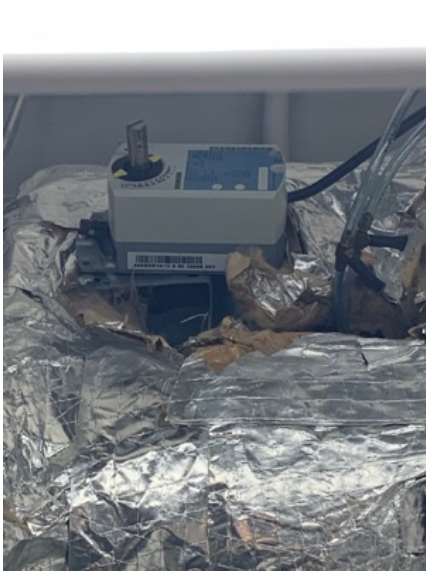




NAMEPLATE



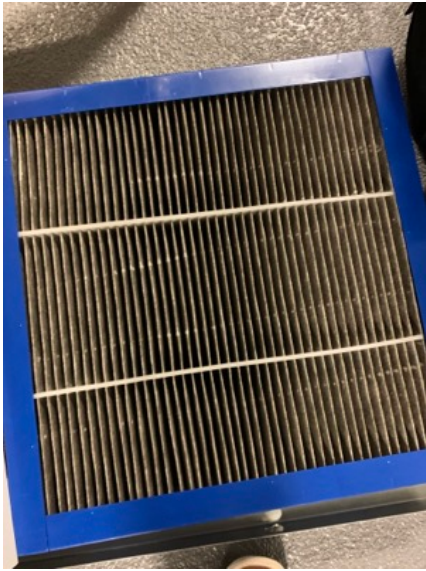
FLOW STATION



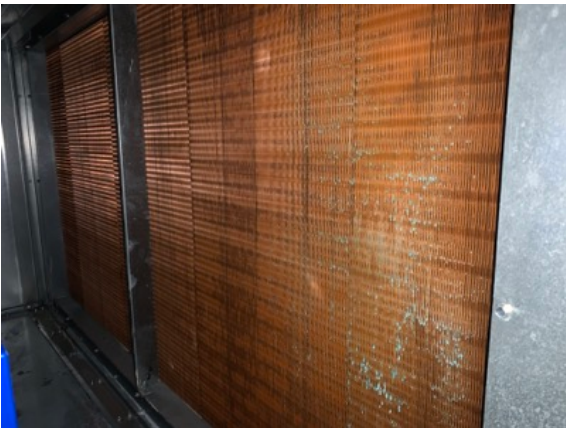
OA DAMPER



PREFILTER



FINAL FILTER



HEAT COIL



COOL COIL



OXIDATION ON COIL



CONDENSATE PAN



DRIVE DATA



BELTS



UNABLE TO TRAVERSE SUPPLY DUCT DUE TO SOUND ATTENUATION



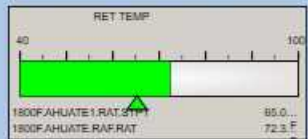
BROKEN WINDOW ON RETURN PLENUM DOOR



GSA\_ATE\_2

TO AHU-ATE2

Return STPT controls SFAN Speed  
If space temp is above STPT the SFAN speed will increase, if space temp is below STPT the SFAN Speed will decrease to OCC MINSPD



SAT OCC STPT  
None - 0  
65.00 %

Return from ATE RAF

- RAD/ODP DIFF-3  
Priority - 16  
27.04 °F
- DA DP RAD EN  
Priority - 16  
ON
- DA DP TMP EN  
Priority - 16  
ON
- DA LO TMP EN  
Priority - 16  
ON
- DA HI TMP EN  
Priority - 16  
ON
- DA DP TMP EN  
Priority - 16  
ON

DEHUMID MODE  
Priority - 16  
OFF

DEHUMID STPT  
None - 0  
55.00 %

MIN VLV POS ATE1: CLO & PH VLVs  
None - 0  
3.00 %

LTD NORMAL

COOL VALVE  
Priority - 16  
34.59 %

UNOCC STPT  
None - 0  
65.00 °F

CC TEMP  
64.11 °F

SAT LOOP  
Priority - 16  
70.61

1800F.AHUATE1.CCVDP  
CV DEW PT VAL  
None - 0  
0.00

1800F.AHUATE1.CCT.LMT  
CCT TMP LMT  
None - 0  
0.00

1800F.AHUATE1.CCVV  
1 CL VLV VRT  
None - 0  
0.00 %

1800F.AHUATE1.CCVT  
CV TMP LMT  
Priority - 16  
0.00

SUP STPT  
65.00 %

SUP AIR T  
65.52 °F

FIRE ALARM  
NORMAL

ATE1 MODE  
Priority - 16  
OCC

AHU ATE1 ENAB  
Priority - 16  
ON

MU AIR FAN S/S  
Priority - 16  
OFF

1ST FL RMT  
73.28 °F

OA → AFMS A10-40

SA →

1800F.ADATEOA.DM...  
Priority - 16  
47.2 %

1800F.ADATEOA-AIR  
2,512.0 fts3/min

PRE-FILT CLEAN  
FIN-FILT CLEAN

OA DAMPER  
CONTROLLED BY CO2 ALARM  
OPENS TO 100%

TCV02  
HWR  
HWS

DELAY HCV - HUM  
None - 0  
300.00

HEAT VALVE  
Priority - 16  
0.00 %

1 SAF STP/SRT  
Priority - 16  
ON

1 SAF STATUS  
Priority - 16  
ON

SAF SPD  
Priority - 16  
58.00 %

COND. VALVE  
Priority - 16  
0.00 %

SAF CFM  
3,707.50 fts3/min

HIGH STATIC  
NORMAL

OCC MIN SPD  
25.00 %

SUP HUMID  
35.71 RH

SUP DEW PT  
37.51

SUP DEW PT S  
50.00 %

1800F.AHUATE1.SDPL1  
0.00

6TH FL RMT  
74.06 °F

4TH RMT LOW  
65.00

1ST FL RMT  
71.28 °F

6TH FL ATRM  
27.64 RH

4TH FL RMT  
71.87 °F

1ST FL ATRM  
29.34 RH

4TH FL ATRM  
30.67 RH

1ST FL ATRM  
29.34 RH



Comfort. Under control.

## GSA DC0021ZZ Central Office Headquarters (Washington, DC)

### CheckList Information

<b>Name :</b>	AHU-SL	<b>Status :</b>	NotSubmitted
<b>Assigned Organization :</b>	National TAB	<b>Asset :</b>	
<b>Requesting Organization :</b>	National TAB		

### CheckList Item Details

**AHU Measurement NOVA Third Party Contractor Fill Out. Measure and verify the building minimum and maximum outdoor air for each AHU providing outdoor air to the building.**

Supply Air CFM Measured:	Design: 8600 / Actual: 8,531 CFM
Confirm DCV is Disabled (Demand Controlled Ventilation)	DCV IS DISABLED
Outside Air Measurement Method (Direct PT or SA-RA PT)	DIRECT MEASUREMENT
Outside Air CFM Measured: (Maximum and Minimum OA CFM)	Design: 500 / Actual: 571 CFM / BAS DISPLAY 500 CFM
If Outside Air CFM is determined by Supply - Return air CFM, document the Measured Return Air CFM:	N/A OA WAS DIRECTLY MEASURED
BAS Setpoint. Document BAS Setpoint at time of testing. Include Outside Air Damper Setpoint BAS shows.	BAS SETPOINT IS 55HZ, MEASURED UNIT AT 54.9HZ
BAS Screenshot. Request Facility Team to save screenshots of the BAS screen for each AHU (thumb drive) and GSA or O&M upload to the google drive.	Attached
Document Actual Observed Outside Air Damper Position. [Visual % Open: 0%, 25%, 75%, 100%.]	OA comes from VAV. Its damper was at 41 %
Does AHU have full air side economizer?	No      OA comes from VAV.
<b>AHU Information &amp; Verification. Include Photo Documentation</b>	
Attach Photos of AHU Nameplate.	Yes

Pre-Filter MERV Rating (or NA)	PREFILTER MERV RATING IS NOT LISTED ON THE FILTERS
Pre-Filter Size	6-20X20X4
Final Filter MERV Rating	6-MERV14/14A
Final Filter Size	6-20X20X4
Belts - Visual Assessment of condition	BELTS ARE NOT CRACKED. BELT IN THE MIDDLE IS NOT AS TENSIONED AS THE OTHERS. RECOMMEND REPLACING
Belts - Size and quantity	3-BX60
Note any modifications made to AHU set points to operate in full capacity.	NO MODIFICATION TO SETPOINT REQUIRED
Note if the AHU has full air side economizing ability & Damper Type.	NO ECONOMIZING CAPABILITIES
Note if any modifications made to AHU set points to operate in full capacity.	NO MODIFICATIONS NEEDED TO THE SETPOINT
Electrical connections - Visual assessment. Document motor Voltage and Amperage.	CONNECTIONS ARE SECURED VOLTS-421 AMPS- 13.5A MAX SPEED NEEDED TO REACH DESIGN CFM IS 55 HZ.
Heating Coil(s) - Visual assessment and photo documentation.	HEATING COIL IS IN GOOD CONDITION
Cooling Coil(s) - Visual assessment and photo documentation.	COOLING COIL IS IN GOOD CONDITION
Condensate Pan(s) - Visual assessment and photo documentation.	THERE IS NO DEBRIS IN THE CONDENSATE PAN
Any unusual operation observed? (including vibration, over-pressure, etc.)	NO UNUSUAL OPERATION
Exhaust System Status (on/off). If this does not apply for this AHU, "N/A"	N/A SYSTEM DOES NOT HAVE EXHAUST

Visually inspect outdoor air intake louvers, bird screens, mist eliminators, and adjacent areas for cleanliness and integrity.

OA IS SUPPLIED THROUGH A VAV, UNABLE TO CHECK FOR DEBRIS OR OBSTRUCTION

Note ALL visible debris or visible biological material observed, physical damage to louvers, screens, or mist eliminators, and if such damage impairs the item from providing the required outdoor air entry.

N/A OA SUPPLIED THROUGH VAV

List any found deficiencies. Note any remarks or comments, including corrective actions. Include photo documentation of any relevant findings.

THERE IS A LOT OF DUST BUILDUP ON THE WALLS OF THE RETURN DUCT VISIBLE AT THE UNIT. THERE IS SOME CORROSION ON THE INLET OF THE COOLING COIL AND OXIDATION IN THE FAN INLET COMPARTMENT



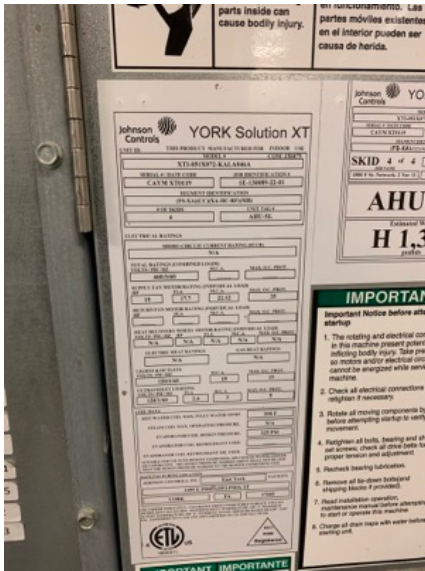
# AHU-SL

Tuesday, December 14, 2021

12 Remarks Identified



AHU-SL



NAMEPLATE



PREFILTER



FINAL FILTER



HEAT COIL



COOL COIL



MINOR CORROSION ON COOL COIL



BELTS

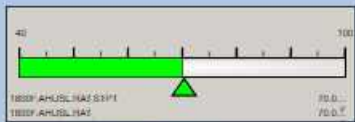


MIDDLE BELT IS BEIT TENSIONED PROPERLY



OA  
From  
S1-S2

1800FAD BLO... Priority - 18 41.2 %	1800FAD BLO... None - 0 500.0 ft3/min	1800FAD BLO... None - 0 500.0 ft3/min
1800FAD BLO... 600.0 ft3/min	1800FAD BLO... Priority - 18 100.0 %	1800FAD BLO... Manual Operat... 100.0 %



RA

FIRE ALARM  
NORMAL

RETURN AIR T  
78.00 °F

H L  
DIRTY PRE-FIL...  
CLEAN

H L  
DIRTY FIN FILTER  
CLEAN

COOL VALVE  
Priority - 18  
16.04 %  
CHWR  
CHWS

SAF SB  
Priority - 18  
DN  
SAF OT  
DN  
SAF SPEED  
Priority - 18  
91.35 %  
SAF FAULT  
OK  
SAF OT STS  
DN

L H  
HIGH STATIC  
NORMAL

NORMAL OA D...  
Priority - 18  
ON

HEAT VALVE  
Priority - 18  
5.00 %  
HWR  
HWS

LOW TEMP DET...  
NORMAL

BAT STPT  
86.00 °F  
SUP AIR T  
85.51 °F

AFTR HR & OA...  
Priority - 18  
OFF

AHU 3L MODE  
Priority - 16  
OCC

AHU 3L ENAB  
Priority - 16  
ON



Comfort. Under control.

## GSA DC0021ZZ Central Office Headquarters (Washington, DC)

### CheckList Information

<b>Name :</b>	AHU-MH	<b>Status :</b>	NotSubmitted
<b>Assigned Organization :</b>	National TAB	<b>Asset :</b>	
<b>Requesting Organization :</b>	National TAB		

### CheckList Item Details

**AHU Measurement NOVA Third Party Contractor Fill Out. Measure and verify the building minimum and maximum outdoor air for each AHU providing outdoor air to the building.**

Supply Air CFM Measured:	Design: 1090 / Actual: 1,086 CFM
Confirm DCV is Disabled (Demand Controlled Ventilation)	Yes the DVC is confirmed disabled.
Outside Air Measurement Method (Direct PT or SA-RA PT)	The outside air was measured directly by traversing the OA duct.
Outside Air CFM Measured: (Maximum and Minimum OA CFM)	Design: 200 / Actual: 202 CFM / BAS DISPLAY 200 CFM
If Outside Air CFM is determined by Supply - Return air CFM, document the Measured Return Air CFM:	The outside air was determined directly.
BAS Setpoint. Document BAS Setpoint at time of testing. Include Outside Air Damper Setpoint BAS shows.	Fan Speed set to 41 HZ
BAS Screenshot. Request Facility Team to save screenshots of the BAS screen for each AHU (thumb drive) and GSA or O&M upload to the google drive.	Attached
Document Actual Observed Outside Air Damper Position. [Visual % Open: 0%, 25%, 75%, 100%.]	OA comes from VAV. Its damper was at 14 % per BAS
Does AHU have full air side economizer?	No
<b>AHU Information &amp; Verification. Include Photo Documentation</b>	
Attach Photos of AHU Nameplate.	Yes
Pre-Filter MERV Rating (or NA)	The pre-filter MERV rating is not listed but looks like a MERV 8.

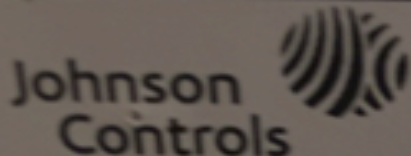
Pre-Filter Size	The pre-filter size is 20x20x2.
Final Filter MERV Rating	The final filter has a MERV 14 rating.
Final Filter Size	The final filter size is 20x20x4.
Belts - Visual Assessment of condition	After visual inspection the belts are in excellent condition.
Belts - Size and quantity	The unit has 2 AX44 belts
Note if the AHU has full air side economizing ability & Damper Type.	OA comes from VAV.
Note if any modifications made to AHU set points to operate in full capacity.	No modifications were needed the fan speed was limited to 41 HZ in auto mode.
Electrical connections - Visual assessment. Document motor Voltage and Amperage.	Motor Voltage- 276 V VFD Amperage- 2.9 A VFD Max fan speed needed to reach design CFM 41 HZ
Heating Coil(s) - Visual assessment and photo documentation.	After observation the heating coils are in good condition.
Cooling Coil(s) - Visual assessment and photo documentation.	After a visual assessment it looks like the cooling coil has 5 % deterioration but still looks good.
Condensate Pan(s) - Visual assessment and photo documentation.	The condensate pan looks good.
Any unusual operation observed? (including vibration, over-pressure, etc.)	During inspection there were no unsuspecting activities.
Exhaust System Status (on/off). If this does not apply for this AHU, "N/A"	This unit does not have an exhaust system.
Visually inspect outdoor air intake louvers, bird screens, mist eliminators, and adjacent areas for cleanliness and integrity.	There are no outdoor air intake louvers for this unit.

Note ALL visible debris or visible biological material observed, physical damage to louvers, screens, or mist eliminators, and if such damage impairs the item from providing the required outdoor air entry.

There are no signs of debris and or biological material.

List any found deficiencies. Note any remarks or comments, including corrective actions. Include photo documentation of any relevant findings.

There are no other deficiencies for this unit.



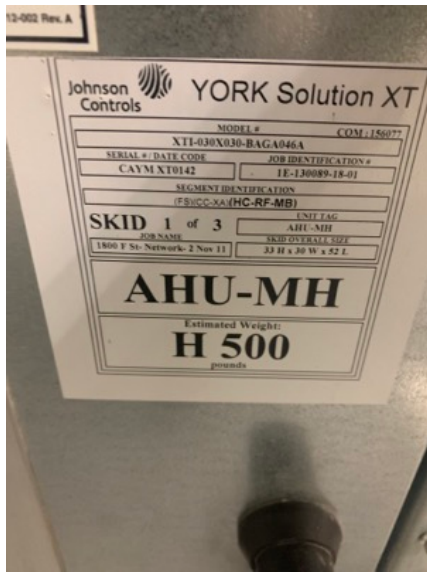
# YORK Solution XT

MODEL #		COM: 156077
XTI-030X030-BAGA046A		
SERIAL # / DATE CODE	JOB IDENTIFICATION #	
CAYM XT0142	1E-130089-18-01	
SEGMENT IDENTIFICATION		
(FS)(CC-XA)(HC-RF-MB)		
<b>SKID 1 of 3</b>	UNIT TAG	
JOB NAME	AHU-MH	
1800 F St- Network- 2 Nov 11	SKID OVERALL SIZE	
	33 H x 30 W x 52 L	
<b>AHU-MH</b>		
Estimated Weight:		
<b>500</b> pounds		

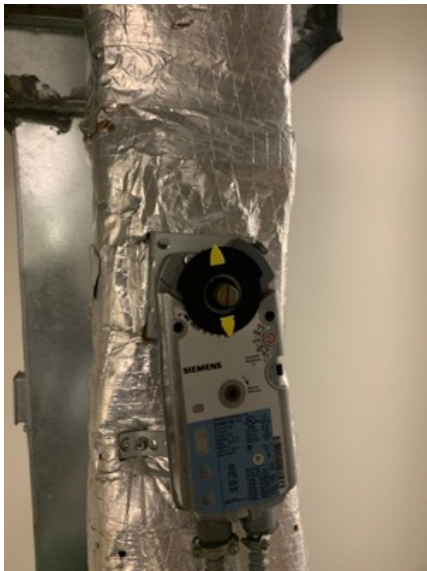
**GSA\_HQ\_AHU-MH**

Tuesday, December 21, 2021

10 Remarks Identified



NAMEPLATE



OADAMPER



PRE-FILTER



FINAL FILTER



HEATING COIL



COOLING COIL



CONDENSATE PAN



VFD



BELT





Room: 3100\_AHU

AHU MH MODE  
Priority - 15  
OCC

AHU MH ENAB  
Priority - 1E  
ON

OA  
From  
SE1-SE2

A  
F  
M  
S

1800FADMHOA.DMP... Priority 16 13.6 %	1800FADMHOA.CLG... None - 0 200.0 93/min	1800FADMHOA.CLG... None - 0 200.0 93/min
1800FADMHOA.AIR V... 200.0 93/min	1800FADMHOA.FLOW... Priority 16 100.0 %	1800FADMHOA.FLO... Manual Operator B 100.0 %

AFTT: HRS OA DMP  
Priority - 16  
CLOSED

NORMAL OA DAMPER  
Priority - 16  
OPEN

HEAT VALVE  
Priority - 16  
0.00 %

SUP AIR FAN  
Priority - 1E  
ON

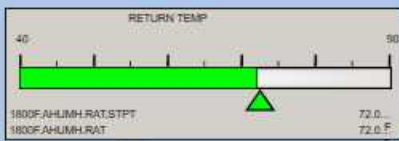
SAF STATUS  
ON

SUPPLY FAN SPEED  
None - 0  
96.00 %

SAF STATUS ALM  
OFF

AHUMH SAT STPT  
68.00 °F

SUPPLY TEMP  
68.02 °F



HWR  
HWS

LOW TEMP  
NORMAL

RA

FIRE ALARM  
NORMAL

SA

RETURN TEMP  
72.02 °F

H L  
PRE FILTER  
CLEAN

H L  
FINAL FILTER  
CLEAN

COOLING VALVE  
Priority - 16  
49.98

CHWR  
CHWS

AHUMH SAT STPT  
Priority - 16  
68.00 °F

L H  
HIGH STATIC  
NORMAL



Comfort. Under control.

## GSA DC0021ZZ Central Office Headquarters (Washington, DC)

### CheckList Information

<b>Name :</b>	AHU-KON	<b>Status :</b>	NotSubmitted
<b>Assigned Organization :</b>	National TAB	<b>Asset :</b>	
<b>Requesting Organization :</b>	National TAB		

### CheckList Item Details

**AHU Measurement NOVA Third Party Contractor Fill Out. Measure and verify the building minimum and maximum outdoor air for each AHU providing outdoor air to the building.**

Supply Air CFM Measured:	Design: 11100 / Actual: 10,534 CFM
Confirm DCV is Disabled (Demand Controlled Ventilation)	YES, DCV IS DISABLED
Outside Air Measurement Method (Direct PT or SA-RA PT)	DIRECT AIRFOIL MEASUREMENT
Outside Air CFM Measured: (Maximum and Minimum OA CFM)	Design: 2200 / Actual: 1983 / BAS DISPLAY 2220 CFM
If Outside Air CFM is determined by Supply - Return air CFM, document the Measured Return Air CFM:	N/A OA MEASURED DIRECTLY
BAS Setpoint. Document BAS Setpoint at time of testing. Include Outside Air Damper Setpoint BAS shows.	Static Set Point increased from 1.75" to 2.0 " OA comes from VAV.
BAS Screenshot. Request Facility Team to save screenshots of the BAS screen for each AHU (thumb drive) and GSA or O&M upload to the google drive.	Attached
Document Actual Observed Outside Air Damper Position. [Visual % Open: 0%, 25%, 75%, 100%.]	OA comes from VAV. Its damper was at 48 %
Does AHU have full air side economizer?	No OA comes from VAV.

### **AHU Information & Verification. Include Photo Documentation**

Attach Photos of AHU Nameplate.	Yes
---------------------------------	-----

Pre-Filter MERV Rating (or NA)	3-MERV8 3-MERV10
Pre-Filter Size	3-20X24X2 3-24X24X2
Final Filter MERV Rating	3-MERV15 3-MERV14/14A
Final Filter Size	3-20X24X4 3-24X24X4
Belts - Visual Assessment of condition	BELTS ARE IN GOOD CONDITION, NO CRACKS, BELT TENSION IS GOOD
Belts - Size and quantity	2-B95R
Note if the AHU has full air side economizing ability & Damper Type.	NO ECONOMIZING CAPABILITIES. THERE IS A DAMPER ON THE RETURN AND ON THE OA. BUT IT IS NOT FOR THE PURPOSE OF ECONOMIZING SINCE OA IS SUPPLIED THROUGH A VAV
Note if any modifications made to AHU set points to operate in full capacity.	Static Set Point increased from 1.75" to 2.0 "
Electrical connections - Visual assessment. Document motor Voltage and Amperage.	CONNECTIONS ARE SECURED V-436 A-17.4A
Heating Coil(s) - Visual assessment and photo documentation.	HEATING COIL IS IN GOOD CONDITION
Cooling Coil(s) - Visual assessment and photo documentation.	FINS ON COOLING COIL ARE STRAIGHT. THERE IS SOME OXIDATION ON THE BACK SIDE OF THE COIL.
Condensate Pan(s) - Visual assessment and photo documentation.	CONDENSATE PAN IS FREE OF DEBRIS AND OBSTRUCTION
Any unusual operation observed? (including vibration, over-pressure, etc.)	ISSUE NOTED WITH OA DAMPER INTERNAL TO THE UNIT WHEN UNIT IS TURNED OFF
Exhaust System Status (on/off). If this does not apply for this AHU, "N/A"	THERE IS A RETURN AIR FAN FOR THIS UNIT. IT WAS OPERATING DURING TESTING

Visually inspect outdoor air intake louvers, bird screens, mist eliminators, and adjacent areas for cleanliness and integrity.

OA IS INTRODUCED TO THE HUNIT THROUGH A VAV. UNABLE TO CHECK FOR OBSTRUCTIONS OR FOREIGN OBJECTS. THERE ARE NO SIGNS OF ANYTHING STUCK INSIDE THE VAV

Note ALL visible debris or visible biological material observed, physical damage to louvers, screens, or mist eliminators, and if such damage impairs the item from providing the required outdoor air entry.

NOTHING TO NOTE

List any found deficiencies. Note any remarks or comments, including corrective actions. Include photo documentation of any relevant findings.

OA DAMPER INTERNAL TO THE UNIT IS NOT FULLY SECURED TO THE SHAFT CONNECTED TO THE MOTOR. WHEN MOTOR MOVES TO CLOSED POSITION THE DAMPER DOES NOT FULLY CLOSE. DAMPER POSITION CNA BE MANIPULATED BYHAND

A photograph of a mechanical room. In the foreground, two vertical white pipes are visible, each equipped with two pressure gauges. The pipes are connected to a network of other pipes and valves. In the background, there are several grey metal cabinets, likely electrical control panels, with various labels and switches. The ceiling is covered with white insulation. The overall scene is a technical environment for HVAC or industrial systems.

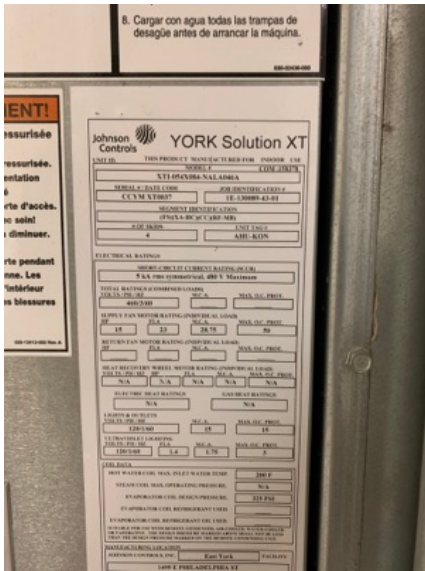
# AHU-KON

Tuesday, December 14, 2021

13 Remarks Identified



Remarks 1



Remarks 2



Remarks 3



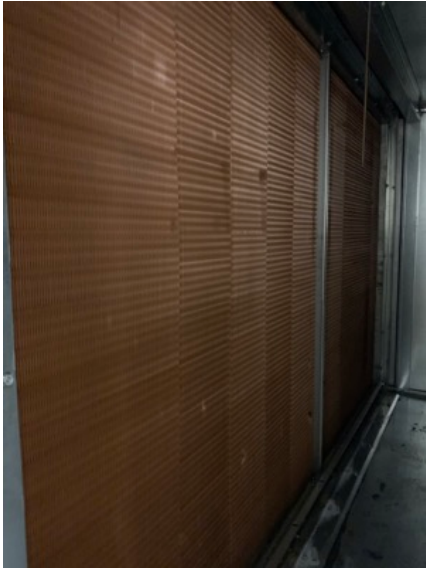
Remarks 4



Remarks 5



Remarks 6



Remarks 7



Remarks 8



Remarks 9



Remarks 10



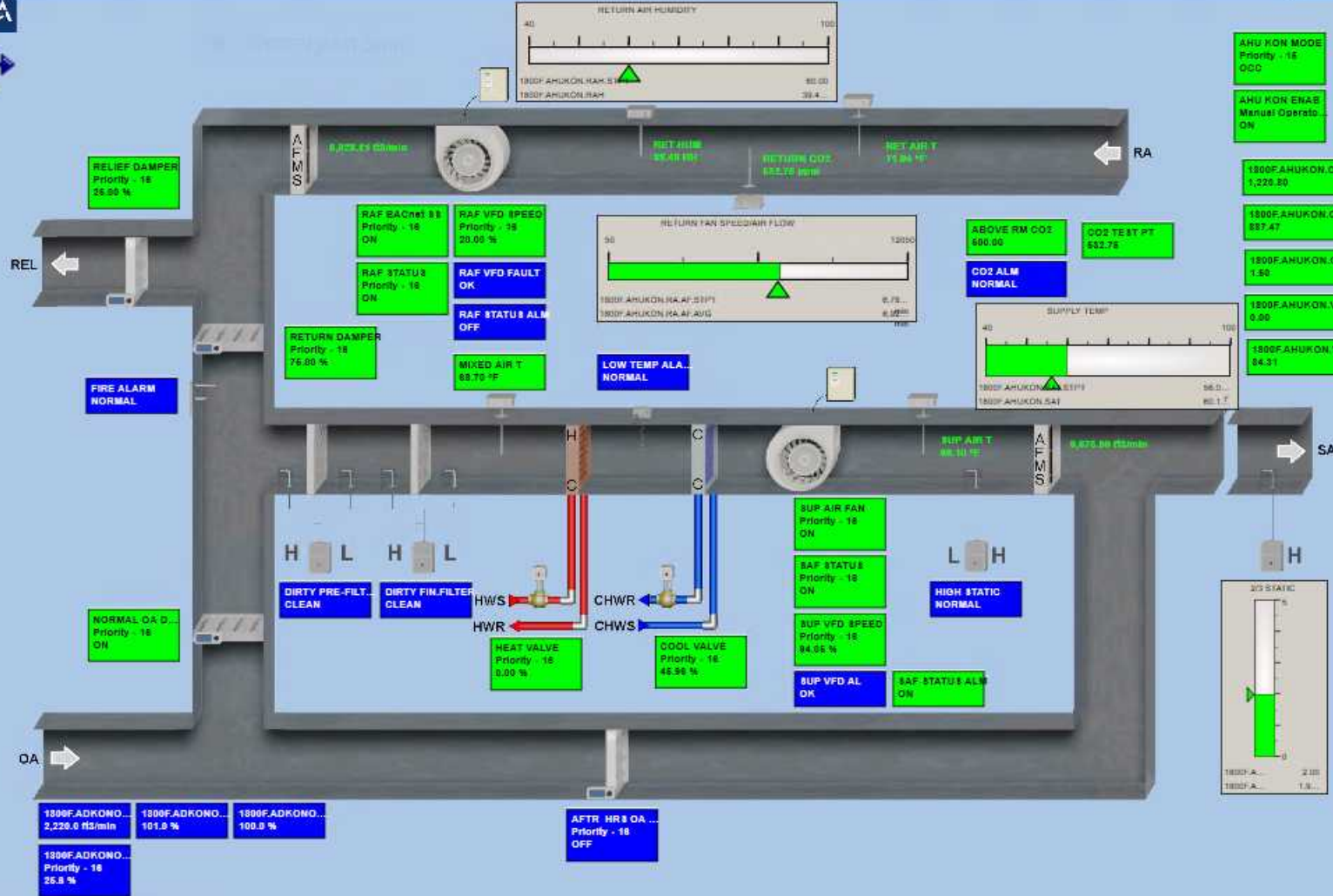
Remarks 11



Remarks 12



Remarks 13





Comfort. Under control.

## GSA DC0021ZZ Central Office Headquarters (Washington, DC)

### CheckList Information

<b>Name :</b>	AHU-2 SE	<b>Status :</b>	NotSubmitted
<b>Assigned Organization :</b>	National TAB	<b>Asset :</b>	
<b>Requesting Organization :</b>	National TAB		

### CheckList Item Details

**AHU Measurement NOVA Third Party Contractor Fill Out. Measure and verify the building minimum and maximum outdoor air for each AHU providing outdoor air to the building.**

Supply Air CFM Measured:	Design: 6000 / Actual: 6,007 CFM
Confirm DCV is Disabled (Demand Controlled Ventilation)	The DCV is confirmed disabled.
Outside Air Measurement Method (Direct PT or SA-RA PT)	The outside air was measured directly by traversing the outside air duct.
Outside Air CFM Measured: (Maximum and Minimum OA CFM)	Design: 690 / Actual: 768 CFM / BAS DISPLAY 688 CFM
If Outside Air CFM is determined by Supply - Return air CFM, document the Measured Return Air CFM:	OA comes from VAV.
BAS Setpoint. Document BAS Setpoint at time of testing. Include Outside Air Damper Setpoint BAS shows.	Static Set Point increased from 0.75" to 1.0 "
BAS Screenshot. Request Facility Team to save screenshots of the BAS screen for each AHU (thumb drive) and GSA or O&M upload to the google drive.	Attached
Document Actual Observed Outside Air Damper Position. [Visual % Open: 0%, 25%, 75%, 100%.]	OA comes from VAV. Its damper was at 44 %
Does AHU have full air side economizer?	No
<b>AHU Information &amp; Verification. Include Photo Documentation</b>	
Attach Photos of AHU Nameplate.	Yes
Pre-Filter MERV Rating (or NA)	The pre filter MERV rating is not listed on filter nor near the unit.

Pre-Filter Size	The pre filter sizes for the unit are 12x24x2 and 20x24x2.
Final Filter MERV Rating	The final MERV Rating for the final filter is MERV 14
Final Filter Size	The final filter sizes for the unit are 12x24x4 and 20x24x4.
Belts - Visual Assessment of condition	After examination, the belt condition is really good.
Belts - Size and quantity	The belts the unit are 2 5vx630
Note if the AHU has full air side economizing ability & Damper Type.	OA comes from VAV.
Note if any modifications made to AHU set points to operate in full capacity.	Static Set Point increased from 0.75" to 1.0 "
Electrical connections - Visual assessment. Document motor Voltage and Amperage.	Motor voltage-460 v VFD Amperage- 11.8 A VFD fan speed 98%
Heating Coil(s) - Visual assessment and photo documentation.	After visual assessment the heating coils looks to be in good condition.
Cooling Coil(s) - Visual assessment and photo documentation.	After visual assessment the cooling coils looks to be in good condition.
Condensate Pan(s) - Visual assessment and photo documentation.	The condensate pan looks clean.
Any unusual operation observed? (including vibration, over-pressure, etc.)	There were no unusual operation deficiencies that occurred.
Exhaust System Status (on/off). If this does not apply for this AHU, "N/A"	This unit did not have an exhaust system present.

Visually inspect outdoor air intake louvers, bird screens, mist eliminators, and adjacent areas for cleanliness and integrity.


This unit does not have an outdoor air intake louver.

Note ALL visible debris or visible biological material observed, physical damage to louvers, screens, or mist eliminators, and if such damage impairs the item from providing the required outdoor air entry.

No visible sign of debris and or biological materials.

List any found deficiencies. Note any remarks or comments, including corrective actions. Include photo documentation of any relevant findings.

There are no other deficiencies for this unit.

Johnson Controls  YORK Solution XT

MODEL #		COM : 156048
XTI-042X066-KAKA046A		
SERIAL # / DATE CODE	JOB IDENTIFICATION #	
CAYM XT0083	1E-130089-02-01	
SEGMENT IDENTIFICATION		
(FS-XA)(CC)(RF-MB)		
SKID 2 of 3	UNIT TAG	
JOB NAME	AHU-2SE	
1800 F St- Network- 2 Nov 11	SKID OVERALL SIZE	
	45 H x 66 W x 39 L	
<b>AHU-2SE</b>		
Estimated Weight:		
<b>H 1,200</b>		

GSA\_HQ\_AHUSE-2

Tuesday, December 21, 2021

9 Remarks Identified

**ADVERTENCIA AVERTISSAMENTO**

**UV Light Hazard**  
Harmful to bare skin and eyes. Can cause temporary eye irritation, loss of vision, and loss of visual acuity when illuminated. This HVAC system is equipped with a UV system to treat the air.

**Peligro luz UV**  
Nocheva para piel y ojos al descubierta. Puede causar irritación de la visión momentánea o pérdida de visión o pérdida de agudeza visual cuando se ilumina. Este sistema de aire acondicionado está equipado con un sistema ultravioleta para tratamiento de aire.

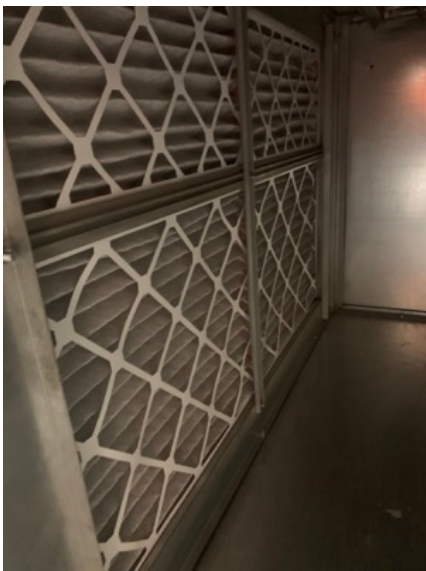
**Risque de lumière à**  
 Dangereux pour la peau yeux. Peut causer la cécité ou permanente. Ne regard les lampes lorsqu'elles sont allumées. Ce système CVCA est équipé d'un système U.V. pour traiter l'air.



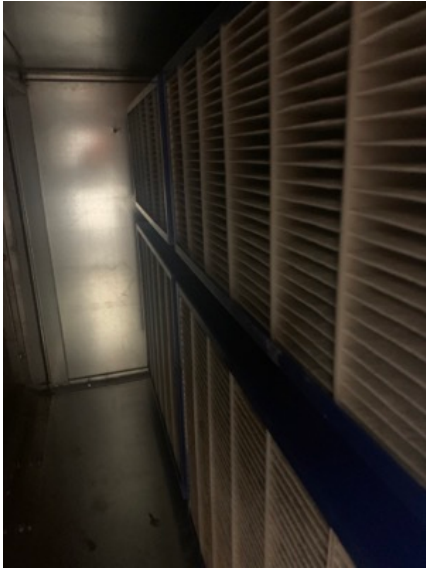
NAMEPLATE



OA DAMPER



PRE-FILTER



FINAL FILTER



HEATING COIL



COOLING COIL



CONDENSATE PAN



VFD



BELTS



OA From SE1-SE2

A F M S

1800F.AD2SEOA.DMP  
Priority - 16  
55.2 %

1800F.AD2SEOA.CLG  
Name - 0  
888.0 (f3/min)

1800F.AD2SEOA.AIR  
Name - 0  
884.0 (f3/min)

1800F.AD2SEOA.CLG  
Name - 0  
885.0 (f3/min)

1800F.AD2SEOA.FLOW  
Priority - 16  
99.5 %

NORMAL OA DAMPER  
Priority - 16  
ON

1800F.AD2SEOA.FLO...  
Manual Operator - 8  
100.0 %

FIRE ALARM  
NORMAL

AF IN HRS OA DMP  
Priority - 16  
OFF

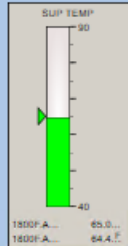
SUP AIR FAN  
Priority - 16  
ON

SAF STATUS  
ON

SUPPLY WIND SPEED  
Priority - 16  
97.36 %

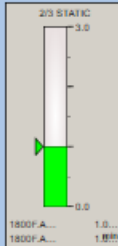
SAF STATUS ALM  
OFF

MIXED AIR 3  
70.85 %



Z33 MODE  
Priority - 16  
OCC

AHU2SE CHAS  
Priority - 16  
ON

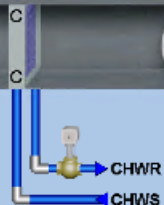


RA

SA

H L  
DIRTY PRE-FILTER  
CLEAN

H L  
DIRTY FIN FILTER  
CLEAN



COOL VALVE  
Priority - 16  
18.34 %

L H  
HIGH STATIC  
NORMAL

H  
SUP STATIC  
1.60 w PDD



Comfort. Under control.

## GSA DC0021ZZ Central Office Headquarters (Washington, DC)

### CheckList Information

<b>Name :</b>	AHU-3 SE	<b>Status :</b>	NotSubmitted
<b>Assigned Organization:</b>	National TAB	<b>Asset :</b>	
<b>Requesting Organization:</b>	National TAB		

### CheckList Item Details

**AHU Measurement NOVA Third Party Contractor Fill Out. Measure and verify the building minimum and maximum outdoor air for each AHU providing outdoor air to the building.**

Supply Air CFM Measured:	Design: 6000 / Actual: 7,792 CFM
Confirm DCV is Disabled (Demand Controlled Ventilation)	DCV IS DISABLED
Outside Air Measurement Method (Direct PT or SA-RA PT)	DIRECT AIRFOIL MEASUREMENT
Outside Air CFM Measured: (Maximum and Minimum OA CFM)	Design: 690 / Actual: 1,093 CFM / BAS DISPLAY 688 CFM
If Outside Air CFM is determined by Supply - Return air CFM, document the Measured Return Air CFM:	N/A OA WAS MEASURED DIRECTLY
BAS Setpoint. Document BAS Setpoint at time of testing. Include Outside Air Damper Setpoint BAS shows.	Static Set Point increased from 0.25" to 1.0 " OA comes from VAV.
BAS Screenshot. Request Facility Team to save screenshots of the BAS screen for each AHU (thumb drive) and GSA or O&M upload to the google drive.	Attached
Document Actual Observed Outside Air Damper Position. [Visual % Open: 0%, 25%, 75%, 100%.]	OA comes from VAV. Its damper was at 36 %
Does AHU have full air side economizer?	No
<b>AHU Information &amp; Verification. Include Photo Documentation</b>	
Attach Photos of AHU Nameplate.	Yes

Pre-Filter MERV Rating (or NA)	MERV-10
Pre-Filter Size	2-12X24X2 2-20X24X2
Final Filter MERV Rating	2-MERV14-14A 2-MERV15
Final Filter Size	2-12X24X4 2-20X24X4
Belts - Visual Assessment of condition	BELTS ARE IN GOOD CONDITION, THERE ARE NO CRACKS, BELT TENSION IS GOOD
Belts - Size and quantity	2- 5VX630
Note any modifications made to AHU set points to operate in full capacity.	AHU SETPOINT WAS INITIALLY TOO LOW. SETPOINT WAS INCREASED FROM
Note if the AHU has full air side economizing ability & Damper Type.	NO, UNIT DOES NOT HAVE ECONOMIZING CAPABILITIES
Note if any modifications made to AHU set points to operate in full capacity.	NO MODIFICATIONS NEEDED. UNIT ACHIEVED FULL CAPACITY BY DRIVING VAVS TO MAX
Electrical connections - Visual assessment. Document motor Voltage and Amperage.	ALL CONNECTIONS ARE SECURED VOLTS-454V AMPS-11.8A
Heating Coil(s) - Visual assessment and photo documentation.	UNIT IS NOT EQUIPPED WITH HEATING COIL
Cooling Coil(s) - Visual assessment and photo documentation.	COOLING COIL IS IN GOOD CONDITION. THERE IS SOME OXIDATION ON THE INLET PIPE OF THE COIL
Condensate Pan(s) - Visual assessment and photo documentation.	CONDENSATE PAN IS FREE OF DEBRIS. THERE ARE SOME SIGNS OF OXIDATION COMING FROM THE COIL INLET
Any unusual operation observed? (including vibration, over-pressure, etc.)	THERE IS A SMALL PUNCTURE IN THE CANVAS CONNECTOR OF THE SUPPLY DUCT THAT IS CAUSING MINOR LEAKAGE
Exhaust System Status (on/off). If this does not apply for this AHU, "N/A"	N/A UNIT DOES NOT HAVE EXHAUST

Visually inspect outdoor air intake louvers, bird screens, mist eliminators, and adjacent areas for cleanliness and integrity.

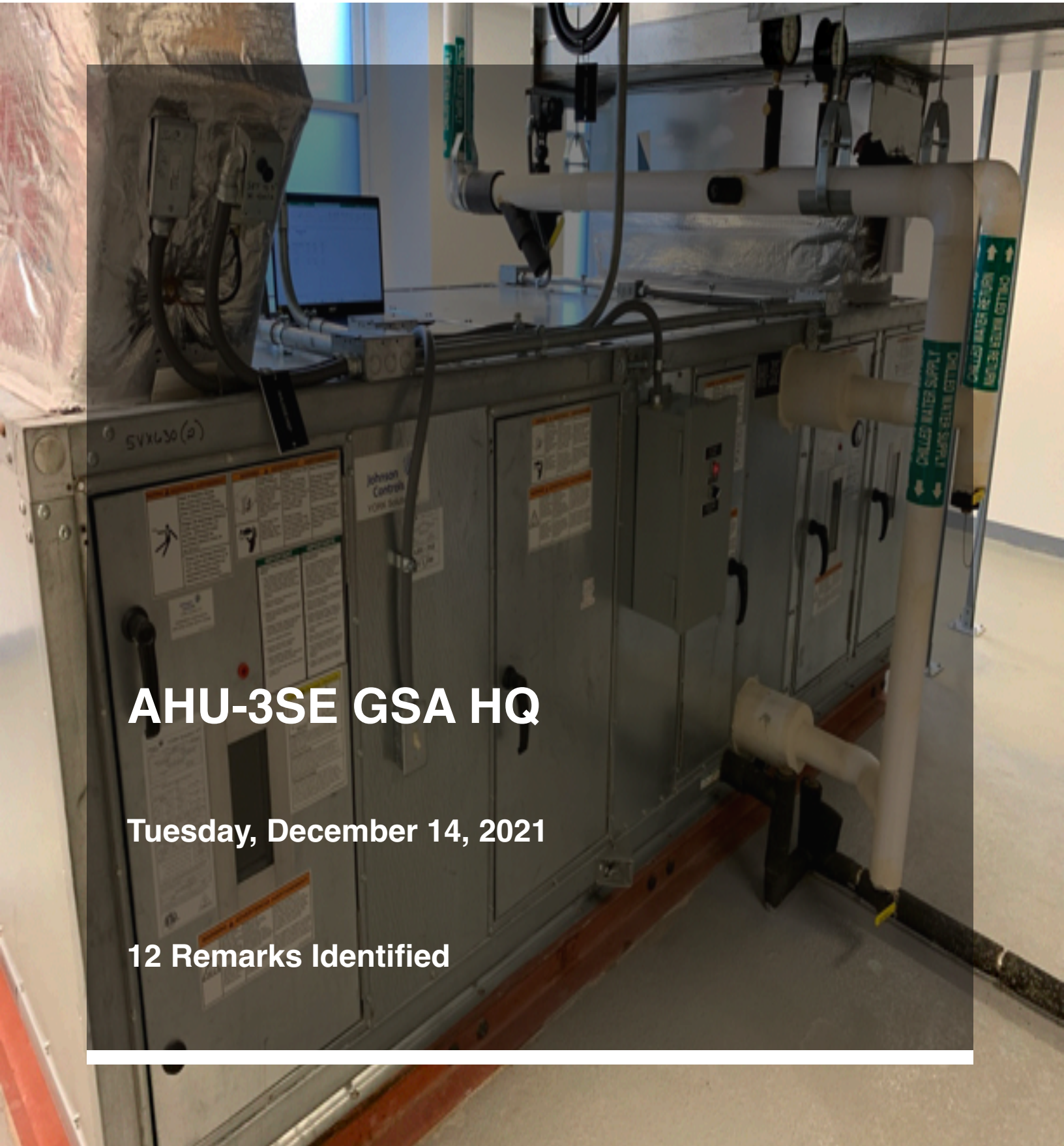
UNABLE TO EXAMINE OUTDOOR AIR LOUVERS OA IS SUPPLIED BY A VAV

Note ALL visible debris or visible biological material observed, physical damage to louvers, screens, or mist eliminators, and if such damage impairs the item from providing the required outdoor air entry.

NO BIOLOGICAL MATERIAL OR DEBRIS FOUND IN THE UNIT

List any found deficiencies. Note any remarks or comments, including corrective actions. Include photo documentation of any relevant findings.

THERE IS A DAMPER IN THE RETURN OF THE UNIT THAT DOES NOT HAVE A MOTOR CONNECTED TO IT. DAMPER IS LOCKED OPEN. NO DAMPER IN SUPPLY THAT PREVENTS SHORT CYCLING WHEN UNIT IS IN NIGHT MODE.



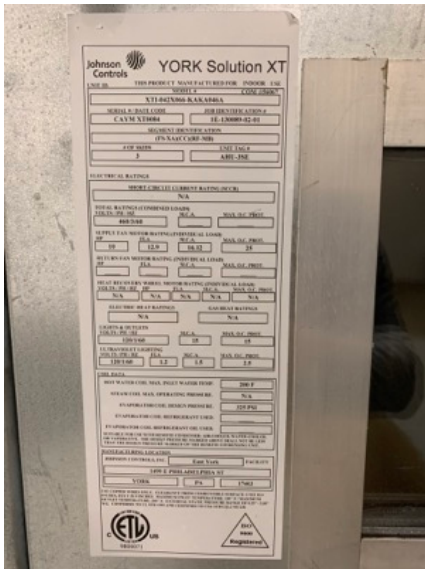
# AHU-3SE GSA HQ

Tuesday, December 14, 2021

12 Remarks Identified



AHU-3SE



NAMEPLATE



OA DAMPER POSITION



FINAL FILTERS



PREFILTER



COOL COIL



RETURN DAMPER- NO ACTUATOR



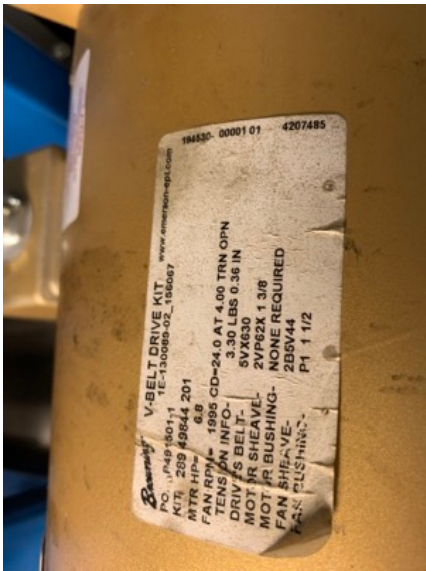
CONDENSATE PAN



CORROSION ON COIL INLET



BELTS



DRIVE DATA



PUNCTURE IN CANVAS CONNECTOR-SUPPLY



OA From SE1-SE2

A F M S

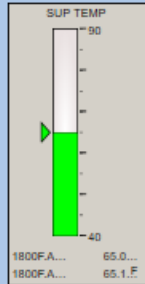
- 1800F.AD3SEOA.DMP... Priority 16 35.2 %
- 1800F.AD3SEOA.FLO... Manual Operator 8 100.0 %
- 1800F.AD3SEOA.FLOW... Priority 16 98.8 %
- 1800F.AD3SEOA.AIR... 684.0 ft3/min

NORMAL OA DAMPER Priority 16 ON

FIRE ALARM NORMAL

AFTR\_HRS OA DMP Priority 16 OFF

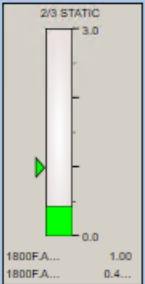
- SUP AIR FAN Priority 16 ON
- SAF STATUS ON
- SAF SPEED Priority 16 100.00 %
- SAF ALM OFF



3SE MODE Priority 15 OCC

AHU3SE ENAB Priority 15 ON

MIXED AIR T 65.50 °F



RA

SA

DIRTY PRE FILTER CLEAN

DIRTY FIN FILTER CLEAN

CHWR COOL VALVE Priority 16 19.83 %  
CHWS

HIGH STATIC NORMAL

SUP STATIC 0.44 in H2O



Comfort. Under control.

## GSA DC0021ZZ Central Office Headquarters (Washington, DC)

### CheckList Information

<b>Name :</b>	AHU-4 SE	<b>Status :</b>	NotSubmitted
<b>Assigned Organization :</b>	National TAB	<b>Asset :</b>	
<b>Requesting Organization :</b>	National TAB		

### CheckList Item Details

**AHU Measurement NOVA Third Party Contractor Fill Out. Measure and verify the building minimum and maximum outdoor air for each AHU providing outdoor air to the building.**

Supply Air CFM Measured:	Design: 6000 / Actual: 6,460 CFM
Confirm DCV is Disabled (Demand Controlled Ventilation)	The DVC is confirmed to be disabled.
Outside Air Measurement Method (Direct PT or SA-RA PT)	The outside air was measured directly by traversing the duct.
Outside Air CFM Measured: (Maximum and Minimum OA CFM)	Design: 690 / Actual: 748 CFM / BAS DISPLAY 676 CFM
If Outside Air CFM is determined by Supply - Return air CFM, document the Measured Return Air CFM:	OA comes from VAV.
BAS Setpoint. Document BAS Setpoint at time of testing. Include Outside Air Damper Setpoint BAS shows.	Static Set Point 0.75" OA comes from VAV.
BAS Screenshot. Request Facility Team to save screenshots of the BAS screen for each AHU (thumb drive) and GSA or O&M upload to the google drive.	Attached
Document Actual Observed Outside Air Damper Position. [Visual % Open: 0%, 25%, 75%, 100%.]	OA comes from VAV. Its damper was at 44 %
Does AHU have full air side economizer?	No OA comes from VAV.
<b>AHU Information &amp; Verification. Include Photo Documentation</b>	
Attach Photos of AHU Nameplate.	Yes

Pre-Filter MERV Rating (or NA)	
Pre-Filter Size	the pre filter size is 12x24x4.
Final Filter MERV Rating	The final filter MERV ratings are MERV14
Final Filter Size	The final filter size is 12x24x4.
Belts - Visual Assessment of condition	The belts look to be in good condition.
Belts - Size and quantity	The unit has 2 5vx630 belts
Note if the AHU has full air side economizing ability & Damper Type.	OA comes from VAV.
Note if any modifications made to AHU set points to operate in full capacity.	no changes needed
Electrical connections - Visual assessment. Document motor Voltage and Amperage.	Motor Voltage-460 V VFD Amperage-11.8 A VFD Fan speed 100 %
Heating Coil(s) - Visual assessment and photo documentation.	After visual assessment the heating coils look to be in good condition.
Cooling Coil(s) - Visual assessment and photo documentation.	After visual assessment the cooling coils look to be in good condition
Condensate Pan(s) - Visual assessment and photo documentation.	The condensate looks good.
Any unusual operation observed? (including vibration, over-pressure, etc.)	There were no unusual operations during observation.
Exhaust System Status (on/off). If this does not apply for this AHU, "N/A"	This unit does not have an exhaust system.
Visually inspect outdoor air intake louvers, bird screens, mist eliminators, and adjacent areas for cleanliness and integrity.	There are no outdoor air intake Oliver's for this unit.

Note ALL visible debris or visible biological material observed, physical damage to louvers, screens, or mist eliminators, and if such damage impairs the item from providing the required outdoor air entry.

There are no debris and or biological material present at this unit.

List any found deficiencies. Note any remarks or comments, including corrective actions. Include photo documentation of any relevant findings.

There are no other deficiencies to this unit.

Charge all drain traps with wa  
starting unit.

Johnson Controls

YORK Solution XT

MODEL #		COM: 156068
XTI-042X066-KAKA046A		
SERIAL # / DATE CODE		JOB IDENTIFICATION #
CAYM XT0085		1E-130089-02-01
SEGMENT IDENTIFICATION		
(FS-XA)(CC)(RF-MB)		
SKID 3 of 3		UNIT TAG
JOB NAME		AHU-4SE
1800 F St- Network- 2 Nov 11		SKID OVERALL SIZE
		45 H x 66 W x 54 L

# AHU-4SE

Estimated Weight:

## H 1,100

pounds

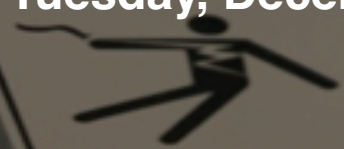
### GSA\_HQ\_AHUSE-4

WARNING ⚠️ ADVERTENCIA AVERTISSEMENT!

Tuesday, December 21, 2021

9 Remarks Identified

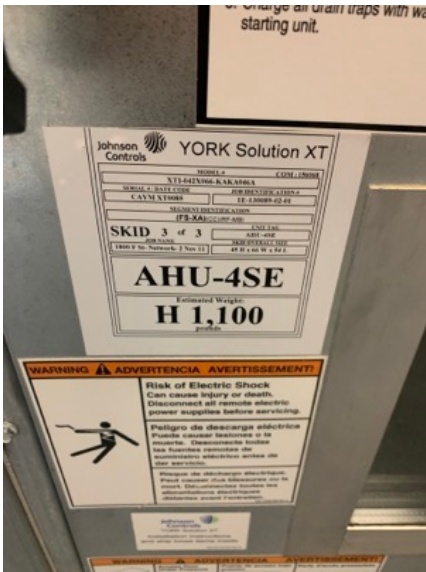
**Risk of Electric Shock**  
Can cause injury or death.  
Disconnect all remote electric  
power sources before servicing.



**Peligro de descarga eléctrica**  
Puede causar lesiones o la  
muerte. Desconecte todas  
las fuentes remotas de  
suministro eléctrico antes de  
dar servicio.

**Risque de décharge électrique.**  
Peut causer des blessures ou la  
mort. Déconnectez toutes les  
alimentations électriques  
distantes avant l'entretien.

WARNING ⚠️ ADVERTENCIA AVERTISSEMENT!



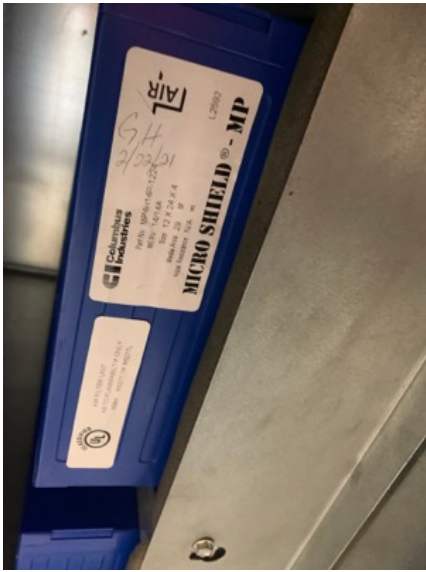
NAMEPLATE



OA DAMPER



PRE-FILTER



FINAL FILTER



CONDENSATE PAN



HEATING COIL



COOLING COIL



VFD



BELTS

OA From SE1-SE2

A F M S

1800FAD4SEOA.DMP  
Priority 16  
34.4 %

1800FAD4SEOA.AIR ...  
692.0 ft3/min

AFTR. HRS OA DMP  
Priority 16  
OFF

NORMAL OA DAMPER  
Priority 16  
ON

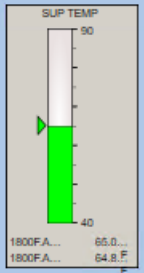
FIRE ALARM  
NORMAL

SUP AIR FAN  
Priority 16  
ON

SAP STATUS  
ON

SAP SPEED  
Priority 16  
100.00 %

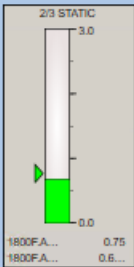
SAP ALM  
OFF



4SE MODE  
Priority 15  
OCC

AHU4SE ENAB  
Priority 16  
ON

MIXED AIR T  
69.14 °F



RA

SA

H L  
DIRTY PRE-FILTER  
CLEAN

H L  
DIRTY FIN FILTER  
CLEAN

CHWR  
COOL VALVE  
Priority 16  
14.15 %

CHWS

L H  
HIGH STATIC  
NORMAL

H  
SUP STATIC  
0.69 IN H2O



Comfort. Under control.

## GSA DC0021ZZ Central Office Headquarters (Washington, DC)

### CheckList Information

<b>Name :</b>	AHU-5 SE	<b>Status :</b>	NotSubmitted
<b>Assigned Organization :</b>	National TAB	<b>Asset :</b>	
<b>Requesting Organization :</b>	National TAB		

### CheckList Item Details

**AHU Measurement NOVA Third Party Contractor Fill Out. Measure and verify the building minimum and maximum outdoor air for each AHU providing outdoor air to the building.**

Supply Air CFM Measured:	Design: 6000 / Actual: 7,650 CFM
Confirm DCV is Disabled (Demand Controlled Ventilation)	DCV IS DISABLED
Outside Air Measurement Method (Direct PT or SA-RA PT)	DIRECT FOIL MEASUREMENT
Outside Air CFM Measured: (Maximum and Minimum OA CFM)	Design: 690 / Actual: 893 CFM / BAS DISPLAY 688 CFM
If Outside Air CFM is determined by Supply - Return air CFM, document the Measured Return Air CFM:	N/A OA MEASURED DIRECTLY
BAS Setpoint. Document BAS Setpoint at time of testing. Include Outside Air Damper Setpoint BAS shows.	Static Set Point 0.75" OA comes from VAV.
BAS Screenshot. Request Facility Team to save screenshots of the BAS screen for each AHU (thumb drive) and GSA or O&M upload to the google drive.	Attached
Document Actual Observed Outside Air Damper Position. [Visual % Open: 0%, 25%, 75%, 100%.]	OA comes from VAV. Its damper was at 44 %
Does AHU have full air side economizer?	No OA comes from VAV.
<b>AHU Information &amp; Verification. Include Photo Documentation</b>	
Attach Photos of AHU Nameplate.	Yes

Pre-Filter MERV Rating (or NA)	FILTER DOES NOT LIST MERV RATING. LOOKS LIKE MERV-7 OR MERV-8
Pre-Filter Size	2-12X24X2 2-20X24X2
Final Filter MERV Rating	2-MERV14/14A 2-MERV15
Final Filter Size	2-12X24X4 2-20X24X4
Belts - Visual Assessment of condition	BELTS ARE IN GOOD CONDITION. NO CRACKING
Belts - Size and quantity	2-5VX630
Note if the AHU has full air side economizing ability & Damper Type.	OA comes from VAV.
Note if any modifications made to AHU set points to operate in full capacity.	NO SET-POINT CHANGES HAD TO BE MADE
Electrical connections - Visual assessment. Document motor Voltage and Amperage.	ELECTRICAL CONNECTIONS ARE GOOD VOLTS-460V AMPS-12.2
Heating Coil(s) - Visual assessment and photo documentation.	UNIT IS NOT EQUIPPED WITH HEATING COIL
Cooling Coil(s) - Visual assessment and photo documentation.	NO DAMAGED OR BENT FINS
Condensate Pan(s) - Visual assessment and photo documentation.	CONDENSATE PAN HAS SOME OXIDATION, BUT THERE IS NO DEBRIS IN THE PAN
Any unusual operation observed? (including vibration, over-pressure, etc.)	NO UNUSUAL OPERATION
Exhaust System Status (on/off). If this does not apply for this AHU, "N/A"	N/A UNIT DOES NOT HAVE EXHAUST
Visually inspect outdoor air intake louvers, bird screens, mist eliminators, and adjacent areas for cleanliness and integrity.	UNABLE TO INSPECT INTERIOR OF OA VAV. THERE IS NO SIGN OF DEBRIS OR FOREIGN SUBSTANCE

Note ALL visible debris or visible biological material observed, physical damage to louvers, screens, or mist eliminators, and if such damage impairs the item from providing the required outdoor air entry.

OUTDOOR AIR VAV IS PROPERLY WORKING. UNABLE TO CHECK FOR DEBRIS INSIDE OF THE DUCTWORK

List any found deficiencies. Note any remarks or comments, including corrective actions. Include photo documentation of any relevant findings.

THERE IS SOME OXIDATION IN THE CONDENSATE DRAIN PAN. THERE IS A DAMPER ON THE RETURN SIDE OF THE UNIT THAT IS NOT CONNECTED TO A MOTOR. DAMPER IS LOCKED OPEN



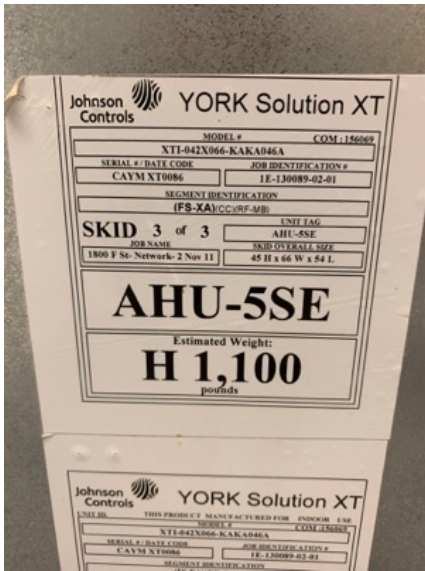
**AHU-5SE GSA HQ**

**Tuesday, December 14, 2021**

**9 Remarks Identified**



AHU-5SE



NAMEPLATE



DAMPER POSITION  
APPROXIMATELY 50%



PREFILTERS



FINAL FILTERS



COOLING COIL



RETURN SIDE AIR DAMPER  
DOES NOT HAVE A MOTOR ATTACHED. DAMPER  
IS LOCKED INTO PLACE



BELTS ARE IN GOOD CONDITION



OXIDATION IN THE CONDENSATE PAN



AHU 5 SE

OA From SE1-SE2

A F M S

- 1800F.ADS6SEA.DMP... Priority - 16 34.0 %
- 1800F.ADS6SEA.FLO... Manual Operator - 8 100.0 %
- 1800F.ADS6SEA.FLOW... Priority - 16 100.0 %
- 1800F.ADS6SEA.AIR... 688.0 f3/min

NORMAL OA DAMPER Priority - 16 ON

FIRE ALARM NORMAL

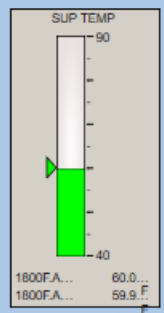
AFTR HRS OA DMP Priority - 16 OFF

SUP AIR FAN Priority - 16 ON

SAF STATUS ON

SAF SPEED Priority - 16 100.00 %

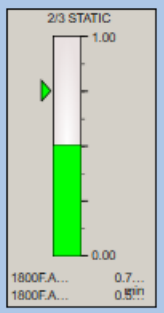
SAF STATUS ALM OFF



MIXED AIR T 68.38 F

SSE MODE Priority - 15 OCC

AHUSE ENAB Priority - 18 ON



RA

SA

H L DIRTY PRE-FILTER CLEAN

H L DIRTY FINFILTER CLEAN

CHWR CHWS COOL VALVE Priority - 16 32.53 %

L H HIGH STATIC NORMAL

SUP STATIC 0.90 in H2O



Comfort. Under control.

## GSA DC0021ZZ Central Office Headquarters (Washington, DC)

### CheckList Information

<b>Name :</b>	AHU-6 SE	<b>Status :</b>	NotSubmitted
<b>Assigned Organization :</b>	National TAB	<b>Asset :</b>	
<b>Requesting Organization :</b>	National TAB		

### CheckList Item Details

**AHU Measurement NOVA Third Party Contractor Fill Out. Measure and verify the building minimum and maximum outdoor air for each AHU providing outdoor air to the building.**

Supply Air CFM Measured:	Design: 6000 / Actual: 7,752 CFM
Confirm DCV is Disabled (Demand Controlled Ventilation)	YES, DCV IS DISABLED
Outside Air Measurement Method (Direct PT or SA-RA PT)	DIRECT AIRFOIL MEASUREMENT
Outside Air CFM Measured: (Maximum and Minimum OA CFM)	Design: 690 / Actual: 689 CFM
If Outside Air CFM is determined by Supply - Return air CFM, document the Measured Return Air CFM:	NOT APPLICABLE, DIRECT TRAVERSE USED
BAS Setpoint. Document BAS Setpoint at time of testing. Include Outside Air Damper Setpoint BAS shows.	Static Set Point 0.65"
BAS Screenshot. Request Facility Team to save screenshots of the BAS screen for each AHU (thumb drive) and GSA or O&M upload to the google drive.	Attached
Document Actual Observed Outside Air Damper Position. [Visual % Open: 0%, 25%, 75%, 100%.]	OA comes from VAV. Its damper was at 47 %
Does AHU have full air side economizer?	No OA comes from VAV.

### **AHU Information & Verification. Include Photo Documentation**

Attach Photos of AHU Nameplate.	Yes
Pre-Filter MERV Rating (or NA)	MERV RATING NOT LISTED ON FILTERS. THEY LOOK TO BE EITHER MERV-7 OR MERV-8
Pre-Filter Size	2-12X24X2 2-20X24X2

Final Filter MERV Rating	2-MERV-14/14A 2-MERV-15
Final Filter Size	2-12X24X4 2-20X24X4
Belts - Visual Assessment of condition	BELTS ARE IN GOOD CONDITION, NO CRACKS, BELT TENSION IS GOOD
Belts - Size and quantity	2-5VX630
Note if the AHU has full air side economizing ability & Damper Type.	OA comes from VAV.
Note if any modifications made to AHU set points to operate in full capacity.	NO MODIFICATIONS HAD TO BE MADE
Electrical connections - Visual assessment. Document motor Voltage and Amperage.	VOLTS- 459V AMPS- 10.8A FAN SPEED 100 %
Heating Coil(s) - Visual assessment and photo documentation.	UNIT NOT EQUIPPED WITH HEATING COIL
Cooling Coil(s) - Visual assessment and photo documentation.	THERE ARE SOME BENT FINS. DAMAGE IS NO MORE THAN 5% OF TOTAL COIL
Condensate Pan(s) - Visual assessment and photo documentation.	CONDENSATE PAN IS FREE OF DEBRIS
Any unusual operation observed? (including vibration, over-pressure, etc.)	NO UNUSUAL OPERATION WAS OBSERVED
Exhaust System Status (on/off). If this does not apply for this AHU, "N/A"	N/A SYSTEM DOES NOT HAVE EXHAUST
Visually inspect outdoor air intake louvers, bird screens, mist eliminators, and adjacent areas for cleanliness and integrity.	RETURN DUCT HAS A DAMPER BU THERE IS NO DAMPER MOTOR. SUPPLY SIDE HAS NO DAMPER THAT WOULD PREVENT SHORT CYCLING DURING NIGHTLY FAN OFF OPERATION
Note ALL visible debris or visible biological material observed, physical damage to louvers, screens, or mist eliminators, and if such damage impairs the item from providing the required outdoor air entry.	UNABLE TO ACCESS INTERIOR OF OA VAV TO CHECK FOR DEBRIS. THERE IS NO SIGN OF BIOLOGICAL MATERIAL INSIDE OF THE AHU TO INDICATE ANYTHING OUT OF THE ORDINARY
List any found deficiencies. Note any remarks or comments, including corrective actions. Include photo documentation of any relevant findings.	WHEN THE UNIT SHUTS DOWN FOR NIGHT OPERATION/FULL OA FED FROM OAHU THERE IS NO DAMPER TO PREVENT SHORT-CYCLING INTO THE RETURN SIDE OF THE UNIT
•	

A photograph of an Air Handling Unit (AHU) in a mechanical room. The unit is a large, grey metal cabinet with multiple doors and panels. On top of the unit, there are various pipes, gauges, and electrical components. A large, insulated duct is visible on the left side, labeled "SUPPLY AIR". The room has a concrete floor and a white wall in the background. The text "AHU-6SE GSA HQ" is overlaid in white on the left side of the image.

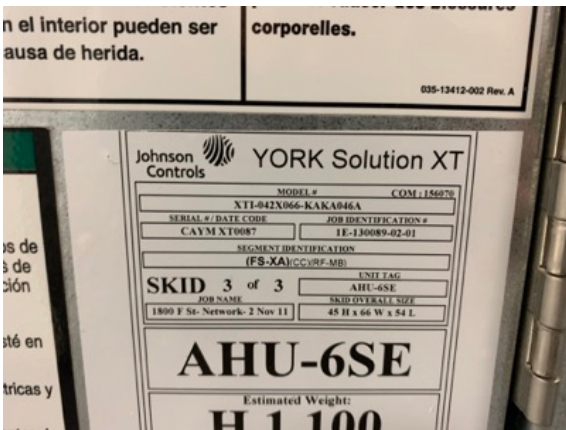
# AHU-6SE GSA HQ

Tuesday, December 14, 2021

9 Remarks Identified



AHU-6SE



NAMEPLATE



OA DAMPER POSITION DURING TESTING



PREFILTER CONDITION



FINAL FILTER CONDITION



SLIGHT DAMAGE TO COOLING COIL.  
NO MORE THAN 5% OF COIL IS DAMAGED



CONDENSATE PAN IS FREE OF DEBRIS



BELT CONDITION



RETURN SIDE DAMPER DOES NOT HAVE MOTOR.  
DAMPER IS LOCKED INTO PLACE



6TH FLOOR/WING 4

OA From SE1-SE2

A F M S

- 1800F.AD6SEQA.DMP. Priority - 16 36.8 %
- 1800F.AD6SEQA.FLO. Manual Operator - 8 100.0 %
- 1800F.AD6SEQA.FLOW. Priority - 16 100.0 %
- 1800F.AD6SEQA.AIR... 688.0 ft3/min

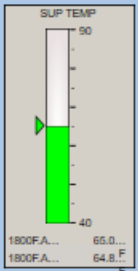
NORMAL OA DAMPER Priority - 16 ON

FIRE ALARM NORMAL

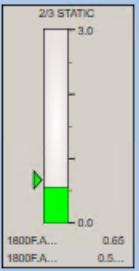
AFTR HRS OA DMP Priority - 16 OFF

MIXED AIR T 67.77 °F

- SUP AIR FAN Priority - 15 ON
- SAF STATUS ON
- SAF SPEED Priority - 16 100.00 %
- SAF ALM OFF

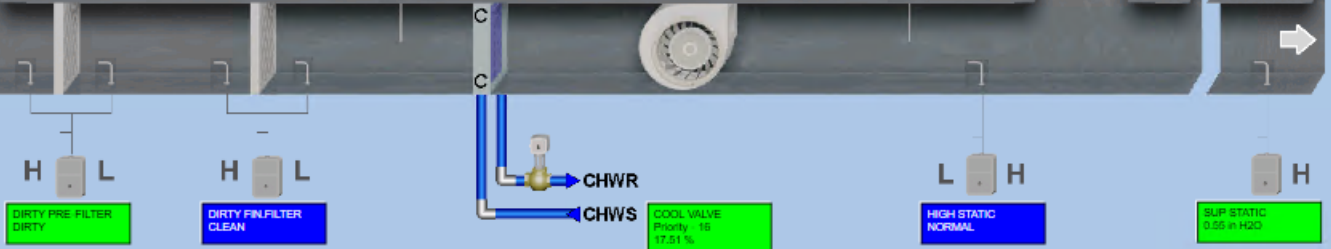


- 6SE MCCE Priority - 15 OCC
- AHUTSE ENAB Priority - 16 ON
- INFIL DAY NGT Priority - 16 DAY



RA

SA





Comfort. Under control.

## GSA DC0021ZZ Central Office Headquarters (Washington, DC)

### CheckList Information

<b>Name :</b>	AHU-7 SE	<b>Status :</b>	NotSubmitted
<b>Assigned Organization :</b>	National TAB	<b>Asset :</b>	
<b>Requesting Organization :</b>	National TAB		

### CheckList Item Details

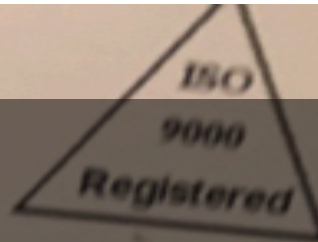
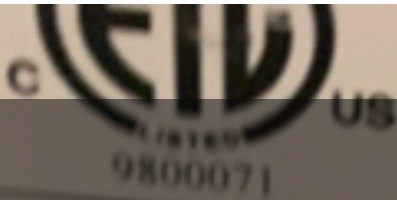
**AHU Measurement NOVA Third Party Contractor Fill Out. Measure and verify the building minimum and maximum outdoor air for each AHU providing outdoor air to the building.**

Supply Air CFM Measured:	Design: 3000 / Actual: 3,032 CFM
Confirm DCV is Disabled (Demand Controlled Ventilation)	DCV is confirmed disabled
Outside Air Measurement Method (Direct PT or SA-RA PT)	Outside site was measured directly by traversing the Outside air duct
Outside Air CFM Measured: (Maximum and Minimum OA CFM)	Design: 310 / Actual: 347 CFM / BAS DISPLAY 304 CFM
If Outside Air CFM is determined by Supply - Return air CFM, document the Measured Return Air CFM:	N/A OA MEASURED DIRECTLY
BAS Setpoint. Document BAS Setpoint at time of testing. Include Outside Air Damper Setpoint BAS shows.	Static Set Point increased from 0.75" to 1.0 " OA comes from VAV.
BAS Screenshot. Request Facility Team to save screenshots of the BAS screen for each AHU (thumb drive) and GSA or O&M upload to the google drive.	Attached
Document Actual Observed Outside Air Damper Position. [Visual % Open: 0%, 25%, 75%, 100%.]	OA comes from VAV. Its damper was at 38 %
Does AHU have full air side economizer?	No OA comes from VAV.

#### **AHU Information & Verification. Include Photo Documentation**

Attach Photos of AHU Nameplate.	Yes
Pre-Filter MERV Rating (or NA)	Pre-filter MERV rating is a MERV 8.
Pre-Filter Size	Pre-filter size is 2 24x24x2
Final Filter MERV Rating	Final filter MERV rating is MERV 14/14A

Final Filter Size	Final filter size is 2 24x24x4 filters.
Belts - Visual Assessment of condition	The belts are in good condition.
Belts - Size and quantity	This unit has 2 AX-47 belts
Note if the AHU has full air side economizing ability & Damper Type.	OA comes from VAV.
Note if any modifications made to AHU set points to operate in full capacity.	Static Set Point increased from 0.75" to 1.0 "
Electrical connections - Visual assessment. Document motor Voltage and Amperage.	Motor voltage-449 V VFD Amperage-6.8 A VFD
Heating Coil(s) - Visual assessment and photo documentation.	The heating coil is in good condition.
Cooling Coil(s) - Visual assessment and photo documentation.	The cooling coil is in good condition.
Condensate Pan(s) - Visual assessment and photo documentation.	Condensate pan has some sediment residue.
Any unusual operation observed? (including vibration, over-pressure, etc.)	Unit has a bypass that will close the the supply duct and have full OA coming in during unoccupied hours(pm)
Exhaust System Status (on/off). If this does not apply for this AHU, "N/A"	There is no exhaust system present at this unit.
Visually inspect outdoor air intake louvers, bird screens, mist eliminators, and adjacent areas for cleanliness and integrity.	There were no OA intake Oliver's at this unit.
Note ALL visible debris or visible biological material observed, physical damage to louvers, screens, or mist eliminators, and if such damage impairs the item from providing the required outdoor air entry.	There are no visible debris and or biological material during inspection.
List any found deficiencies. Note any remarks or comments, including corrective actions. Include photo documentation of any relevant findings.	There are no other deficiencies for this unit.



Johnson Controls

YORK Solution XT

MODEL #		CUM # 156071	
NTL-011X051-KAJA046A			
SERIAL # / DATE CODE	JOB IDENTIFICATION #		
CAYMNT0140	1E-110089-04-01		
SEGMENT IDENTIFICATION (FB-XANCC) (RF-MB)			
SKID 3 of 3		UNIT TAG	
JOB NAME		AHU-7SE	
1800 F St. Network - 2 Nov 11		SKID OVERALL SIZE	
		36 H x 51 W x 43 L	

# AHU-7SE

Estimated Weight:  
**H 800**  
pounds

## GSA\_HQ\_AHUSE-7

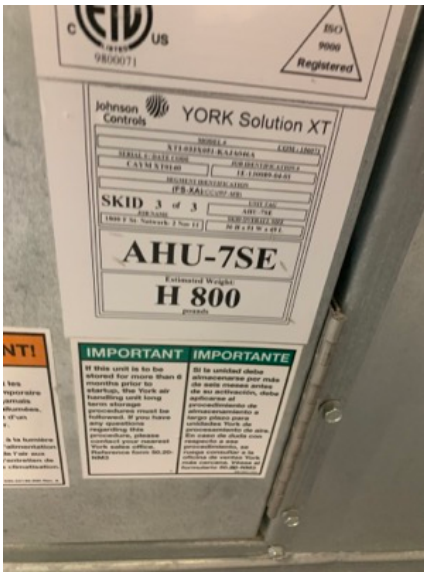
Tuesday, December 21, 2021

10 Remarks Identified

**IMPORTANT**

If this unit is to be stored for more than 6 months prior to startup, the York air handling unit long term storage procedure must be followed. If you have any questions regarding this procedure, please contact your nearest York sales office. Reference form 50.20-NM3

**Si la unidad debe almacenarse por más de seis meses antes de su activación, debe aplicarse el procedimiento de almacenamiento a largo plazo para unidades York de procesamiento de aire. En caso de duda con respecto a ese procedimiento, se ruega consultar a la oficina de ventas York más cercana. Véase el formulario 50.20-NM3**



NAMEPLATE



PRE-FILTER



FINAL FILTER



HEATING COIL



CONDENSATE PAN



COOLING COIL



OADAMPER



VFD



BELTS



## BELT SHAFT INFO



OA From SE1-SE2

A F M S

- 1800F.AD7SE.OA.DMP. Priority - 16 16.4 %
- 1800F.AD7SE.OA.FLO. Manual Operator - 8 100.0 %
- 1800F.AD7SE.OA.FLOW. Priority - 16 100.0 %
- 1800F.AD7SE.OA.AIR... 312.0 CFM/min

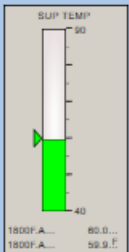
NORWA OA DABRPER Priority - 16 ON

FIRE ALARM NORMAL

AFTR HRS OA DMP Priority - 16 OFF

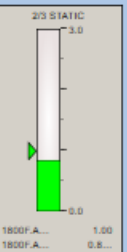
MIXED AIR 1 75.25 %

- SUP AIR FAN Priority - 16 ON
- SAF STATUS ON
- SAF SPEED Priority - 16 97.00 %
- SAF ALM OFF



PSE MODE Priority - 16 GDD

AMTISE ENAB Priority - 16 ON



RA

SA

H L DIRTY PRE-FILTER CLEAN

H L DIRTY FN.FILTER CLEAN

CHWR CHWS

COOL VALVE Priority - 16 28.00 %

L H HIGH STATIC NORMAL

L H SUP STATIC 5.98 IN H2O



Comfort. Under control.

## GSA DC0021ZZ Central Office Headquarters (Washington, DC)

### CheckList Information

<b>Name :</b>	AHU-A0	<b>Status :</b>	NotSubmitted
<b>Assigned Organization :</b>	National TAB	<b>Asset :</b>	
<b>Requesting Organization :</b>	National TAB		

### CheckList Item Details

**AHU Measurement NOVA Third Party Contractor Fill Out. Measure and verify the building minimum and maximum outdoor air for each AHU providing outdoor air to the building.**

Supply Air CFM Measured:	Design: 3200 / Actual: 4,100CFM
Confirm DCV is Disabled (Demand Controlled Ventilation)	DCV IS DISABLED
Outside Air Measurement Method (Direct PT or SA-RA PT)	DIRECT AIRFOIL MEASUREMENT
Outside Air CFM Measured: (Maximum and Minimum OA CFM)	Design: 400 / Actual: 605CFM OA comes from a VAV that serves other areas also.
If Outside Air CFM is determined by Supply - Return air CFM, document the Measured Return Air CFM:	N/A USED DIRECT MEASUREMENT
BAS Setpoint. Document BAS Setpoint at time of testing. Include Outside Air Damper Setpoint BAS shows.	HAD TO OPEN ZONE DAMPERS ON SUPPLY DUCTS SO DP SENSOR WOULDN'T PREVENT FAN FROM REACHING HIGH SPEED
BAS Screenshot. Request Facility Team to save screenshots of the BAS screen for each AHU (thumb drive) and GSA or O&M upload to the google drive.	ATTACHED
Document Actual Observed Outside Air Damper Position. [Visual % Open: 0%, 25%, 75%, 100%.]	NO OA DAMPER ON THIS UNIT. OA COMES FROM VAV THAT SERVES LINEAR DIFFUSERS ON THE 7th Floor
Does AHU have full air side economizer?	No
<b>AHU Information &amp; Verification. Include Photo Documentation</b>	
Attach Photos of AHU Nameplate.	Yes
Pre-Filter MERV Rating (or NA)	1-MERV10 1-MERV8
•	

Pre-Filter Size	1-20X24X2 1-24X24X2
Final Filter MERV Rating	1-MERV15 1-MERV14/14A
Final Filter Size	1-20X24X4 1-24X24X4
Belts - Visual Assessment of condition	BELTS ARE NOT CRACKED, BUT ONE BELT IS NOT AS TENSIONED AS THE OTHER AND SHOULD BE REPLACED
Belts - Size and quantity	2-AP45
Note any modifications made to AHU set points to operate in full capacity.	ZONE DAMPERS WERE CLOSED PREVENTING UNIT FROM RUNNING IN FULL SPEED. MANUALLY OPENED ZONE DAMPERS AND U IT REACH SETPOINT
Note if the AHU has full air side economizing ability & Damper Type.	NO ECONOMIZING CAPABILITIES
Note if any modifications made to AHU set points to operate in full capacity.	HAD TO OPEN ZONE DAMPERS ON SUPPLY DUCTS SO DP SENSOR WOULDN'T PREVENT FAN FROM REACHING HIGH SPEED
Electrical connections - Visual assessment. Document motor Voltage and Amperage.	CONNECTIONS ARE GOOD V-457V A-7.0A
Heating Coil(s) - Visual assessment and photo documentation.	UNIT IS NOT EQUIPPED WITH A HEATING COIL
Cooling Coil(s) - Visual assessment and photo documentation.	BACK SIDE OF COIL HAS HIGH LEVEL OF OXIDATION. FRONT SIDE OF COIL HAS SOME BENT FINS. NO MORE THAN 5% OF FINS ARE BENT
Condensate Pan(s) - Visual assessment and photo documentation.	CONDENSATE PAN IS FREE IF OBSTRUCTIONS, THERE IS SOME OXIDATION RESIDUE IN THE PAN FROM THE COIL
Any unusual operation observed? (including vibration, over-pressure, etc.)	FAN WAS NOT REACHING HIGH SPEED. FOUND ZONE DAMPERS CLOSED AND HAD TO MANUALLY OPEN THEM. THERE IS A DAMPER ON THE RETURN SIDE OF THE UNIT WITH NO DUCTWORK AND NO MOTOR ATTACHED, RECOMMEND SEALING THE SIDE OF THE UNIT IF NOT UTILIZED RETURN DAMPER SECURED WITH WIRES TO LOCK IT OPEN

Exhaust System Status (on/off). If this does not apply for this AHU, "N/A"

N/A UNIT DOES NOT HAVE EXHAUST FAN

Visually inspect outdoor air intake louvers, bird screens, mist eliminators, and adjacent areas for cleanliness and integrity.

OA IS INTRODUCED THROUGH A DUCT CONNECTED TO A VAV. CANNOT CHECK FOR FOREIGN OBJECTS OR DEBRIS

Note ALL visible debris or visible biological material observed, physical damage to louvers, screens, or mist eliminators, and if such damage impairs the item from providing the required outdoor air entry.

NO DEBRIS IN THE SYSTEM

List any found deficiencies. Note any remarks or comments, including corrective actions. Include photo documentation of any relevant findings.

ZONE DAMPERS HAD TO BE MANUALLY OPENED SO UNIT WOULD REACH FULL SPEED. THE SPRING RETURN DOES NOT WORK ON ZONE DAMPERS THERE IS A DAMPER ON THE SIDE OF THE UNIT THAT IS FIXED CLOSED BUT COULD POTENTIALLY BE A FUTURE SOURCE OF RETURN LEAKAGE THERE IS A DAMPER INTERNAL TO THE RETURN IF THE UNIT THAT IS NOT MOTORIZED AND COULD BE A SOURCE OF LEAKAGE BACK SIDE OF COOLING COIL HAS A LOT OF OXIDATION FILTERS ARE DUE FOR A CHANGE. ONE OF THE BELTS IS STRETCHED AND SHOULD BE REPLACED.

•



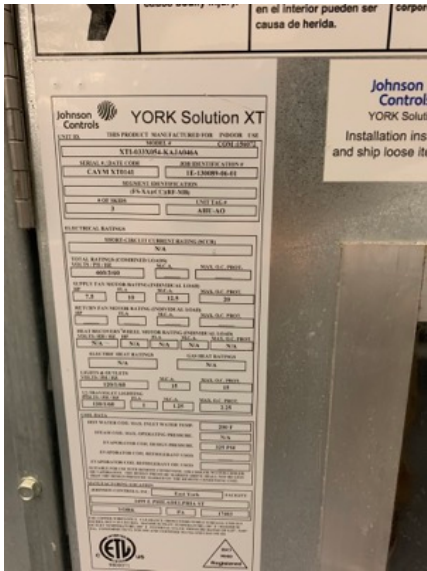
# AHU-AO GSA HQ

Tuesday, December 14, 2021

12 Remarks Identified



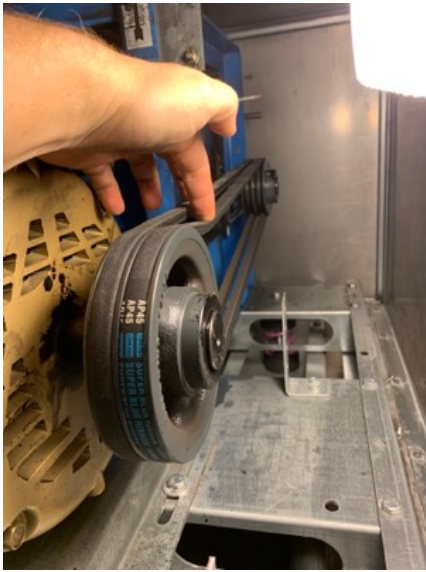
AHU-A0



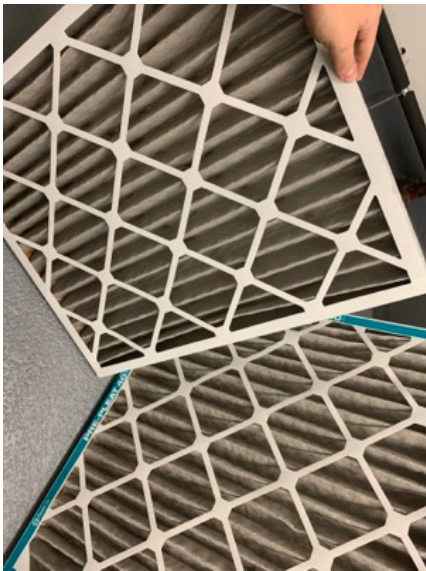
NAMEPLATE



COOL COIL



BELTS



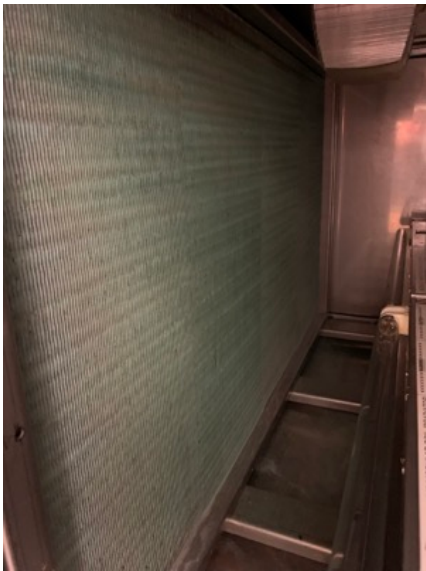
PREFILTERS



FINAL FILTERS



CONDENSATE PAN



HEAVY OXIDATION ON COOLING COIL



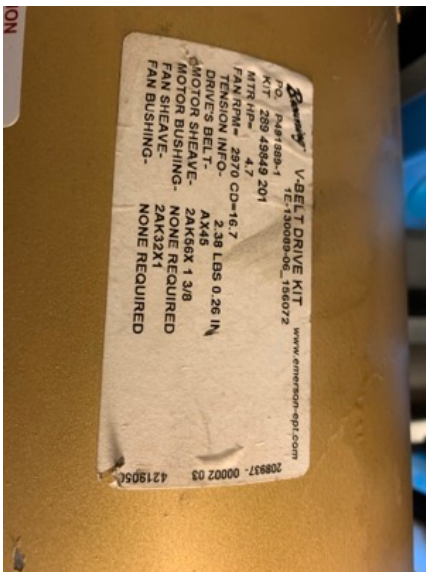
RETURN DAMPER SECURED WITH WIRE TIE



ZONE DAMPERS HAD TO BE MANUALLY OPENED



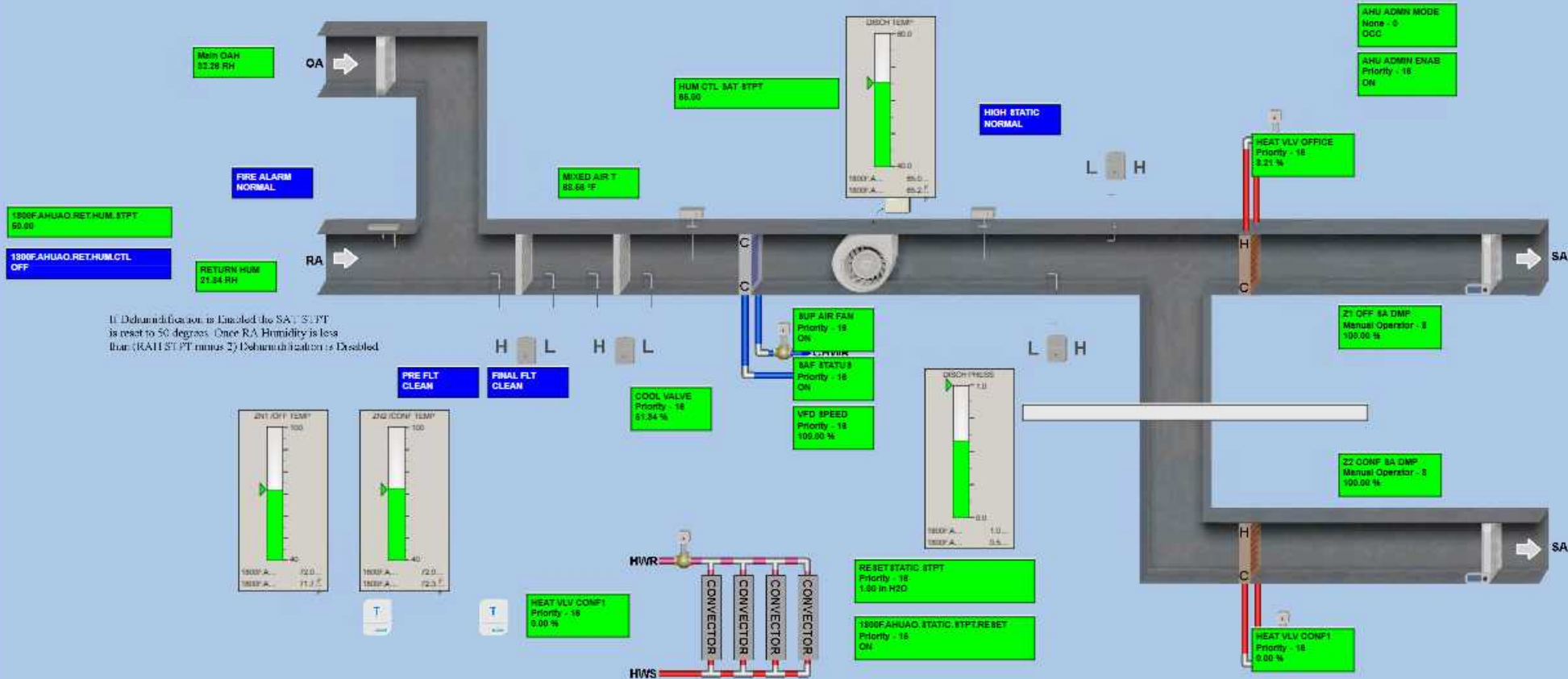
DAMPER ON SIDE OF THE UNIT



DRIVE DATA



GSA



If Dehumidification is Enabled the SAT STPT is reset to 50 degrees. Once RA Humidity is less than (RAH STPT minus 2) Dehumidification is Disabled.



System	Location	Duct Size	Area Sq ft	Duct SP	VEL	CFM	Design CFM
AHU-7SE	7132	12X30	2.50	1.00	1213	3033	3000
AHU-7SE OA	7132	12X12	1.00	-0.12	347	347	310
AHU-4SE	4132	68X10	4.72	1.34	1368	6457	600
AHU-4SE OA	4132	12X12	1.00	-0.24	748	748	690
AHU-2SE	2132	68X10	4.72	1.63	1272	6003	6000
AHU-2SE OA	2132	12X12	1.00	-0.48	768	768	690
AHU-MH	B240	20X10	1.39	0.20	782	1086	1090
AHU-MH OA		8X6	0.33	-0.77	605	202	200
AHU-6SE	6132	54X17	6.38	-0.61	1216	7752	6000
AHU-6SE OA	6132	14X12	1.16	-0.08	591	689	690
AHU-5SE	5132	68X10	4.72	0.91	1621	7650	6000
AHU-5SE OA	5132	14X12	1.16	-0.10	765	893	690
AHU-3SE	3132	68X10	4.72	0.60	1650	7792	6000
AHU-3SE OA	3132	14X12	1.16	-0.27	937	1093	690
AHU-KON	1132	22X66	10.08	NA	848	8551	8900
AHU-KON OA	1132	20X20	2.78	-0.91	716	1983	2200
AHU-AO	7148	32X18	4	0.27	707	2828	na
AHU-AO	7149	22X12	1.83	0.48	694	1272	na
					<b>total</b>	<b>4100</b>	<b>3200</b>
AHU-AO OA	7150	12X8	0.67	-0.4	908	605	
AHU-SL	G241A	48X30	10	0.38	853	8530	8600
AHU-SL OA	G241A	8X10	0.56	-0.13	1027	571	500
AHU-ATE1 OA	G241A	30X12	2.5	1.42	950	2375	2500





# National TAB

Project: GSA DC0021ZZ Central Office HQ- Washington DC

## OA AHU SE 1 & 2

VAV	DDC CFM	MIN STPT CFM	MAX STPT CFM	FLOW %	FLOW STPT %	DAMPER POS %
AD1SSEOA	452	452	452	100	100	55
AD2SSEOA	656	604	660	100	100	35
AD3SSEOA	1024	1040	1040	99	100	45
AD4SSEOA	636	636	636	100	100	33
AD5SSEOA	652	632	648	100	100	34
AD6SSEOA	900	976	884	102	100	27
BSEOA	0	1464	1464	0	100	100
AD2SECOA	350	352	352	100	100	49
AD2SEOA	692	688	688	100	100	44
AD2SEPOA	1240	1240	1240	100	100	47
AD3SECOA	352	352	352	100	100	43
AD3SEOA	672	688	688	98	100	36
AD3SEPOA	1224	1240	1240	99	100	49
AD4SECOA	120	352	352	33	100	100
AD4SEOA	676	688	688	98	100	44
AD4SEPOA	972	1380	1380	71	100	100
AD5SECOA	0	352	352	0	100	100
AD5SEOA	680	68	68	99	100	44
AD5SEPOA	1396	1380	1380	101	100	48
AD6SECOA	284	280	280	102	100	24
AD6SEOA	696	688	688	101	100	47
AD6SEPOA	1020	1016	1016	101	100	53
ADGSSEOA	744	744	744	100	100	52
ADSECOA	340	340	340	100	100	38
ADSEPOA	1036	1044	1044	99	100	42
ADGSECOA	340	336	336	101	100	37
ADGSEPOA	884	880	880	101	100	36
AD7SEPOA	1560	1564	1564	101	100	41
<b>TOTAL DESIGN</b>			<b>21456</b>			

