

OAHU-SE2 GSA HQ

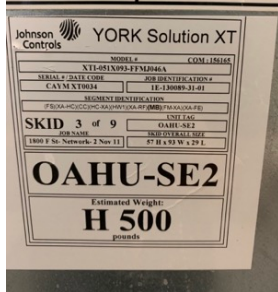
Monday, December 13, 2021

10 Remarks Identified

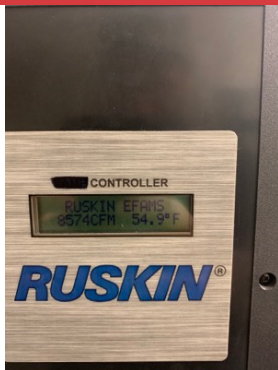


OAHU-SE2

móviles existentes pueden ser dañados por los componentes móviles. Pueden causar lesiones corporales.

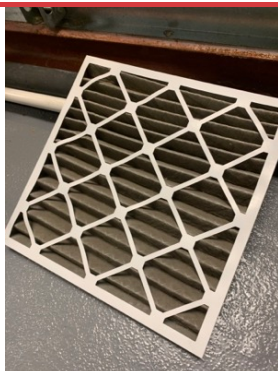


NAMEPLATE



FLOW MONITOR

Measured flow via traverse: 10,388 CFM

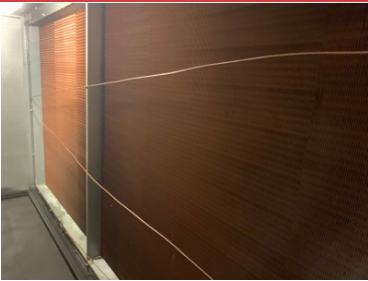


PREFILTER

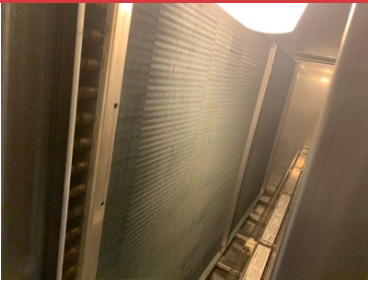
Has some dirt buildup



FINAL FILTER



HEATING COIL



COOLING COIL



BELT CONDITION



CONDENSATE DRAIN



UNIT DAMPER AND OA INTAKE LOUVERS