

**Report By:**

National TAB  
1329 E. KEMPER ROAD  
SUITE 4210  
CINCINNATI, OH 45246



**Report: TAB**

**Function: Test, Adjust, & Balance**

**Date: 01/23/2025**

**Completed By: National TAB**

# **PROJECT**

## **River Crossing Suite 100 (Redding, CA)**

4861 Bechelli Lane

Redding, CA 96002

### **Client**

B&M Builders, Inc.

11330 Sunrise Park Drive

Suite C

Rancho Cordova, CA 95742

# National TAB

Project: River Crossing Suite 100 (Redding, CA)

## Table Of Contents

Section	Page #
REMARKS	3
AHU/RTU	5
FAN - Exhaust	9
GRD LAYOUT	11

## Issue List

- BOTH RTU'S DO NOT HAVE OPERATIONAL ECONOMIZERS.



**River Crossing Suite 100 (Redding, CA)**

**Project Issue Information**

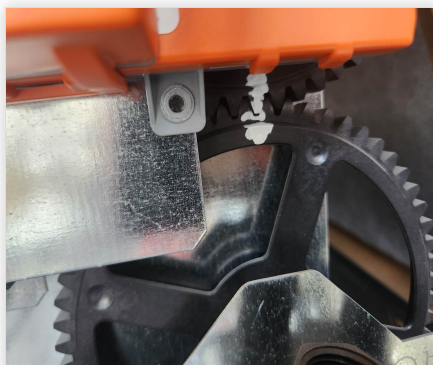
**Issue Name :** BOTH RTU'S DO NOT HAVE OPERATIONAL ECONOMIZERS.  
**Description :** Both RTU 1 and 2 do not have operational economizers. Actuator control reads as unoccupied and had to be manually set for testing. Recommend to have economizers inspected and set to the marked position for proper design flow.

**Created By :** National TAB                      **Assigned To :** National TAB - Zack Eismin  
**Status :** Open  
**Priority :** High                                      **Asset Tag :**  
**Originated Date :** 01/23/2025 - Zack Eismin - National TAB

Project Issue File Details



01/23/2025



01/23/2025

# National TAB

Project: River Crossing Suite 100 (Redding, CA)

System/Unit: AHU/RTU



Asset: RTU-1

AREA:

Unit Data		
	Design	Actual
MFG	NA	TRANE
Serial Num	-	231214116L
Model Num	NA	YSJ072A3S0L02
Configuration	-	VERTICAL
Num OA Filters 1	-	1
OA Filter Size 1	-	37.5X23
Num PreFilter 1	-	3/2
PreFilter Size 1	-	16X24X2 / 18X24X2

Test Data		
	Design	Actual
SF CFM	2400	2436
RA CFM	1990	1997
OA CFM	410	439
RL Voltage	208	210/210/210
RL Amperage	-	1.56/1.57/1.56
OA Damper Position	-	~20% / 1" OPEN
Brake Horse Power	-	0.53

Motor Data		
	Design	Actual
Motor MFG	-	NL
Frame	-	NL
Horsepower	-	3
Motor Rpm	-	NL
Phase	3	3
Rated Voltage	208	208
Rated Amperage	-	8.8
Service Factor	-	NL

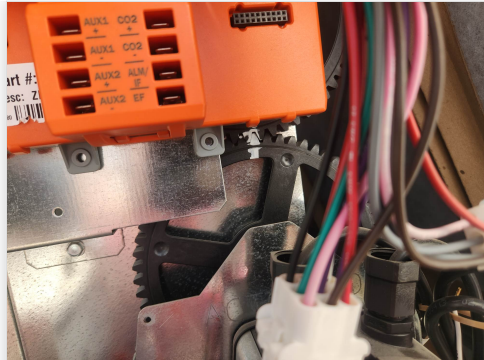
Performance Data		
	Design	Actual
MA Plenum SP	-	-0.27"
Fan Suction SP	-	-0.44"
Fan Discharge SP	-	0.22"
Total ESP	0.5	0.49"
Fan Total SP	-	0.66"
Cooling Coil P.D.	-	N/A

Completed By: Zack Eismin on 01/23/2025

## Unit Data - PHOTO LOG



01/23/2025



01/23/2025

# National TAB

Project: River Crossing Suite 100 (Redding, CA)

## AHU/RTU



**Diffuser Supply (GRD)**

**RTU-1/**

Asset							
Asset Name	Location	Type	Size	DESIGN CFM	CFM(1)	FINAL CFM	% to design
SGRD1		CD-3	6	50	99	54	108.0
SGRD2		CD-1	6	100	313	109	109.0
SGRD3		CD-3	6	50	92	50	100.0
SGRD4		CD-1	8	200	229	182	91.0
SGRD5		CD-1	12	500	1183	549	109.8
SGRD6		CD-1	12	500	1025	526	105.2
SGRD7		CD-1	12	500	115	462	92.4
SGRD8		CD-1	12	500	989	504	100.8
Total				2400	4045	2436	101.5%

**Diffuser Ret/Exh (GRD)**

**RTU-1/**

Asset								
Asset Name	Type	Size	DESIGN CFM	AK	CFM(1)	CFM(2)	FINAL CFM	% to design
EGRD1	CD-2	6	90	1	97	97	97	107.8
EGRD2	CD-2	8	180	1	182	182	182	101.1
EGRD3	CD-2	14	860	1	871	871	871	101.3
EGRD4	CD-2	14	860	1	847	847	847	98.5
Total			1990		1997	1997	1997	100.35%

Completed By: Zack Eismin on 01/23/2025

# National TAB

Project: River Crossing Suite 100 (Redding, CA)

## System/Unit: AHU/RTU



Asset: RTU-2

AREA:

Unit Data		
	Design	Actual
MFG	NA	TRANE
Serial Num	-	233913661L
Model Num	NA	YSJ072A3S0L03
Configuration	-	VERTICAL
Num OA Filters 1	-	1
OA Filter Size 1	-	37.5X23
Num PreFilter 1	-	3/2
PreFilter Size 1	-	16X24X2/ 18X24X2

Test Data		
	Design	Actual
SF CFM	2400	2559
RA CFM	1990	2138
OA CFM	410	421
RL Voltage	208	210/210/210
RL Amperage	-	4.15/4.16/4.15
OA Damper Position	-	~20% / 1" OPEN
Brake Horse Power	-	1.41

Motor Data		
	Design	Actual
Motor MFG	-	NL
Frame	-	NL
Horsepower	-	3
Motor Rpm	-	NL
Phase	3	3
Rated Voltage	208	208
Rated Amperage	-	8.8
Service Factor	-	NL

Performance Data		
	Design	Actual
MA Plenum SP	-	-0.36"
Fan Suction SP	-	-0.50"
Fan Discharge SP	-	0.56"
Total ESP	0.5	0.92"
Fan Total SP	-	1.06"
Cooling Coil P.D.	-	N/A

Completed By: Zack Eismin on 01/23/2025

### Unit Data - PHOTO LOG



01/23/2025



01/23/2025

# National TAB

Project: River Crossing Suite 100 (Redding, CA)

## AHU/RTU



**Diffuser Supply (GRD)**

**RTU-2/**

Asset							
Asset Name	Location	Type	Size	DESIGN CFM	CFM(1)	FINAL CFM	% to design
SGRD1		CD-1	12	600	141	602	100.3
SGRD2		CD-1	12	600	655	654	109.0
SGRD3		CD-1	12	600	712	644	107.3
SGRD4		CD-1	12	600	831	659	109.8
Total				2400	2339	2559	106.62%

**Diffuser Ret/Exh (GRD)**

**RTU-2/**

Asset								
Asset Name	Type	Size	DESIGN CFM	AK	CFM(1)	CFM(2)	FINAL CFM	% to design
EGRD1	CD-2	14	995	1	1011	1011	1067	107.2
EGRD2	CD-2	14	995	1	941	941	1071	107.6
Total			1990		1952	1952	2138	107.44%

Completed By: Zack Eismin on 01/23/2025

# National TAB

Project: River Crossing Suite 100 (Redding, CA)

System/Unit: FAN - Exhaust



Asset: EF-R1

AREA:

Unit Data		
	Design	Actual
MFG	NA	BROAN
Model Num	NA	L200E-A
Serial Num	-	NL
Type	CEILING	CEILING

Test Data		
	Design	Actual
CFM	120	125
RL Voltage	115	NA
RL Amperage	0.5	NA
Discharge ESP	-	0.21"
Total ESP	0.5	0.21"

Motor Data		
	Design	Actual
Motor MFG	-	NL
Frame	-	NL
Horsepower	-	NL
Motor Rpm	900	NL
Phase	1	1
Voltage (rated)	115	120
Amperage (rated)	-	0.5
Service Factor	-	NL

Completed By: Zack Eismin on 01/23/2025

## Unit Data - PHOTO LOG



01/23/2025

# National TAB

Project: River Crossing Suite 100 (Redding, CA)

## System/Unit: FAN - Exhaust



Asset: EF-R2

AREA:

Unit Data		
	Design	Actual
MFG	NA	BROAN
Model Num	NA	L200E-A
Serial Num	-	NL
Type	CEILING	CEILING

Test Data		
	Design	Actual
CFM	120	127
RL Voltage	115	NA
RL Amperage	0.5	NA
Discharge ESP	-	0.23"
Total ESP	0.5	0.23"

Motor Data		
	Design	Actual
Motor MFG	-	BROAN
Frame	-	NL
Horsepower	-	NL
Motor Rpm	900	NL
Phase	1	1
Voltage (rated)	115	120
Amperage (rated)	-	0.5
Service Factor	-	NL

Completed By: Zack Eismin on 01/23/2025

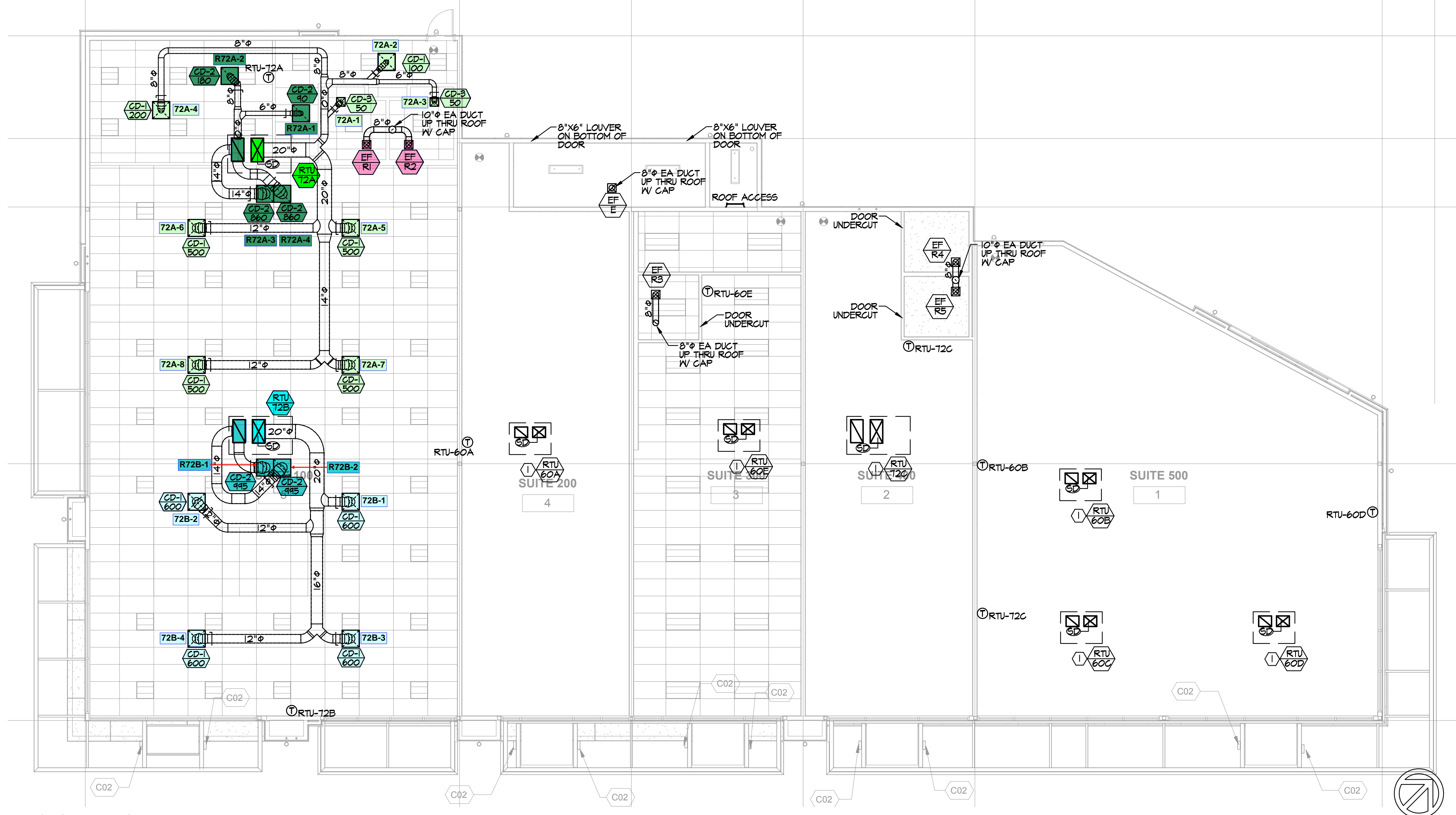
### Unit Data - PHOTO LOG



01/23/2025

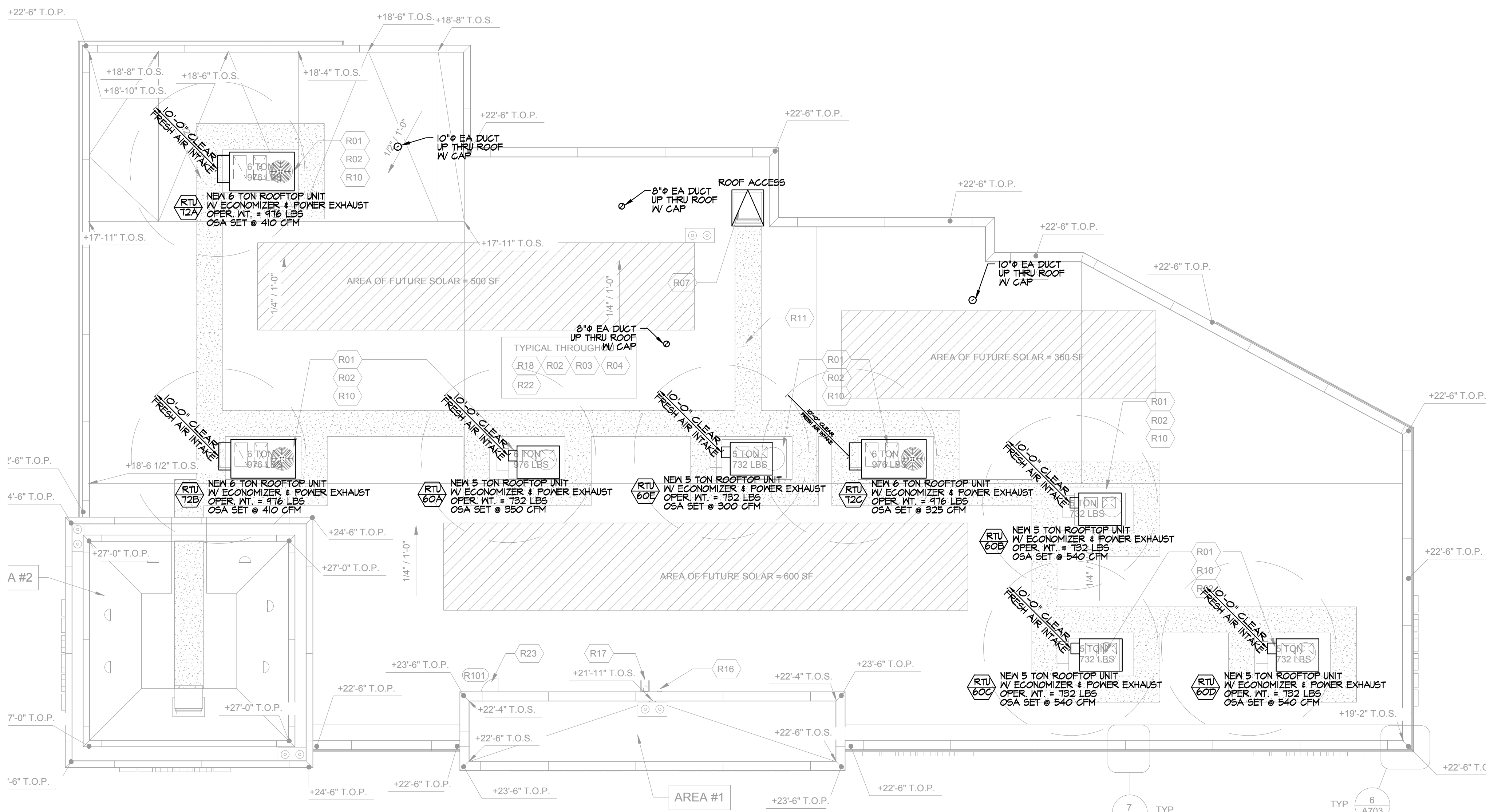
HVAC KEYED NOTES

① SA 4 RA PLENUMS CAPPED FOR FUTURE USE.



HVAC CEILING PLAN

SCALE: 1/8"=1'-0"



HVAC ROOF PLAN

SCALE: 1/8"=1'-0"

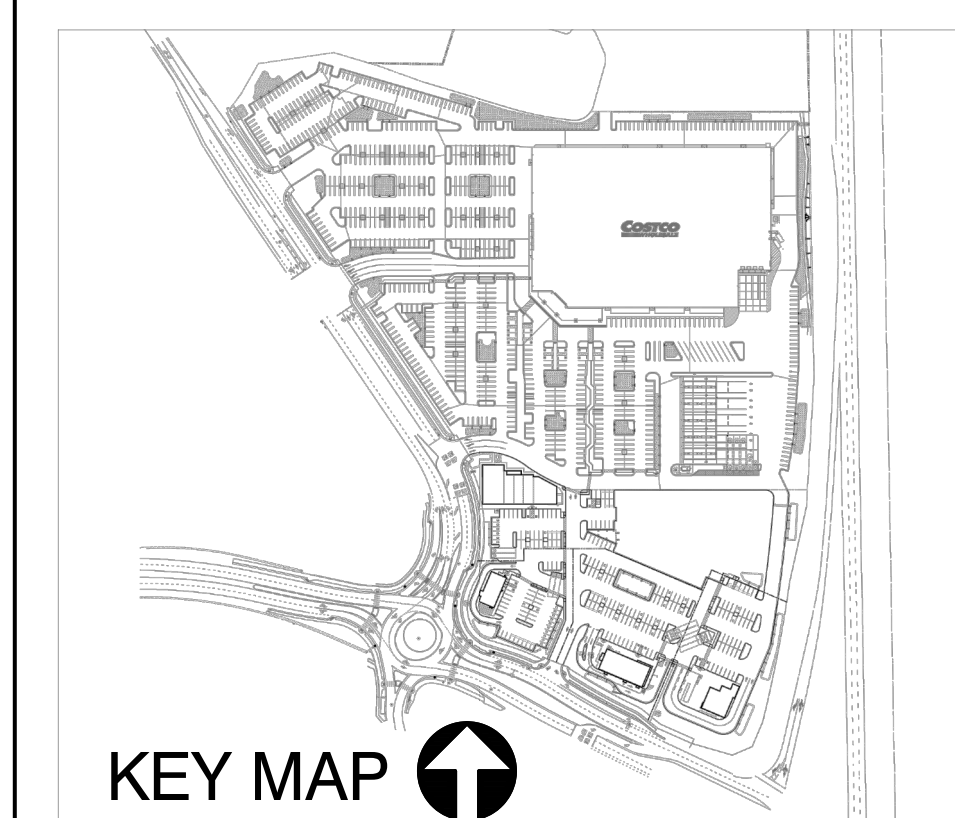
**McKently  
Malak**  
ARCHITECTS

35 Hugus Alley Suite 200  
Pasadena California 91103-3648  
TEL 626 583 8348 FAX 626 583 8387

A PROJECT FOR:

**RICH DEVELOPMENT  
ENTERPRISES, LLC**

1000 N. Western Avenue, Suite 200  
San Pedro, CA 90732  
Tel. 310.454.9417



**RIVER CROSSING  
MARKETPLACE**

4861 Bechelli Lane  
Redding, CA 96002

ISSUES / REVISIONS

No.	DATE	DESCRIPTION
2022-04-06		1st PLAN CHECK SUBMITTAL
2022-08-04		ISSUED FOR BID
2022-10-14		Back Check Submittal (Cycle 1)
2023-01-20		Back Check Submittal (Cycle 2)
2023-04-28		ISSUED FOR CONSTRUCTION
11-03-2022		Addendum A
12-07-2022		Addendum B
04-14-2023		Addendum C

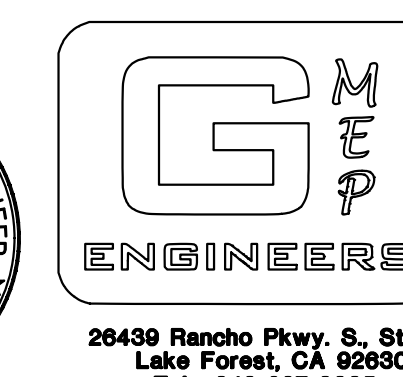
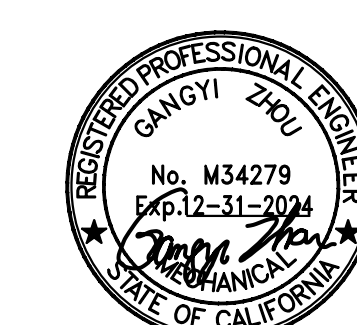
AS INSTRUMENTS OF SERVICE, ALL DESIGNS, IDEAS, AND INFORMATION SHOWN ON THESE DRAWINGS ARE AND SHALL REMAIN THE PROPERTY OF MCKENTLY MALAK ARCHITECTS, INC. NO PART THEREOF SHALL BE COPIED, DISCLOSED TO OTHERS, OR USED IN CONNECTION WITH ANY WORK OR PROJECT OTHER THAN THE SPECIFIC PROJECT FOR WHICH THEY HAVE BEEN PREPARED AND DEVELOPED WITHOUT THE WRITTEN CONSENT OF MCKENTLY MALAK ARCHITECTS, INC. VISUAL CONTACT WITH THESE DRAWINGS SHALL CONSTITUTE CONCLUSIVE EVIDENCE OF ACCEPTANCE OF THESE RESTRICTIONS.

JOB NUMBER: 20127FMA  
DRAWN BY: GMPE CHECKED BY: GMPE  
DATE: 4/27/23  
SHEET DESCRIPTION:

HVAC CEILING PLAN

SHEET NUMBER:

**M-2.0**



26439 Rancho Pkwy. S. Ste 120  
Lake Forest, CA 92650  
Tel: 949-287-0095