



Chick-fil-A

Chick-fil-A
5200 Buffington Road
Atlanta, Georgia 30349



Kurzynske
& Associates
CONSULTING ENGINEERS
2705 Lebanon Pike - Suite One
Nashville, Tennessee 37214
Telephone: (615) 255-5203

I HEREBY CERTIFY THAT THESE PLANS HAVE BEEN PREPARED UNDER MY SUPERVISION AND THAT TO THE BEST OF MY KNOWLEDGE, THE SAME COMPLY WITH ALL RULES, REGULATIONS, AND ORDINANCES OF TUSSEVILLE, AL RELATING TO STRUCTURES AND BUILDINGS.



1-12-24

CHICK-FIL-A
Trussville FSU
5886 Trussville Crossings Pkwy.
Birmingham, AL. 35235

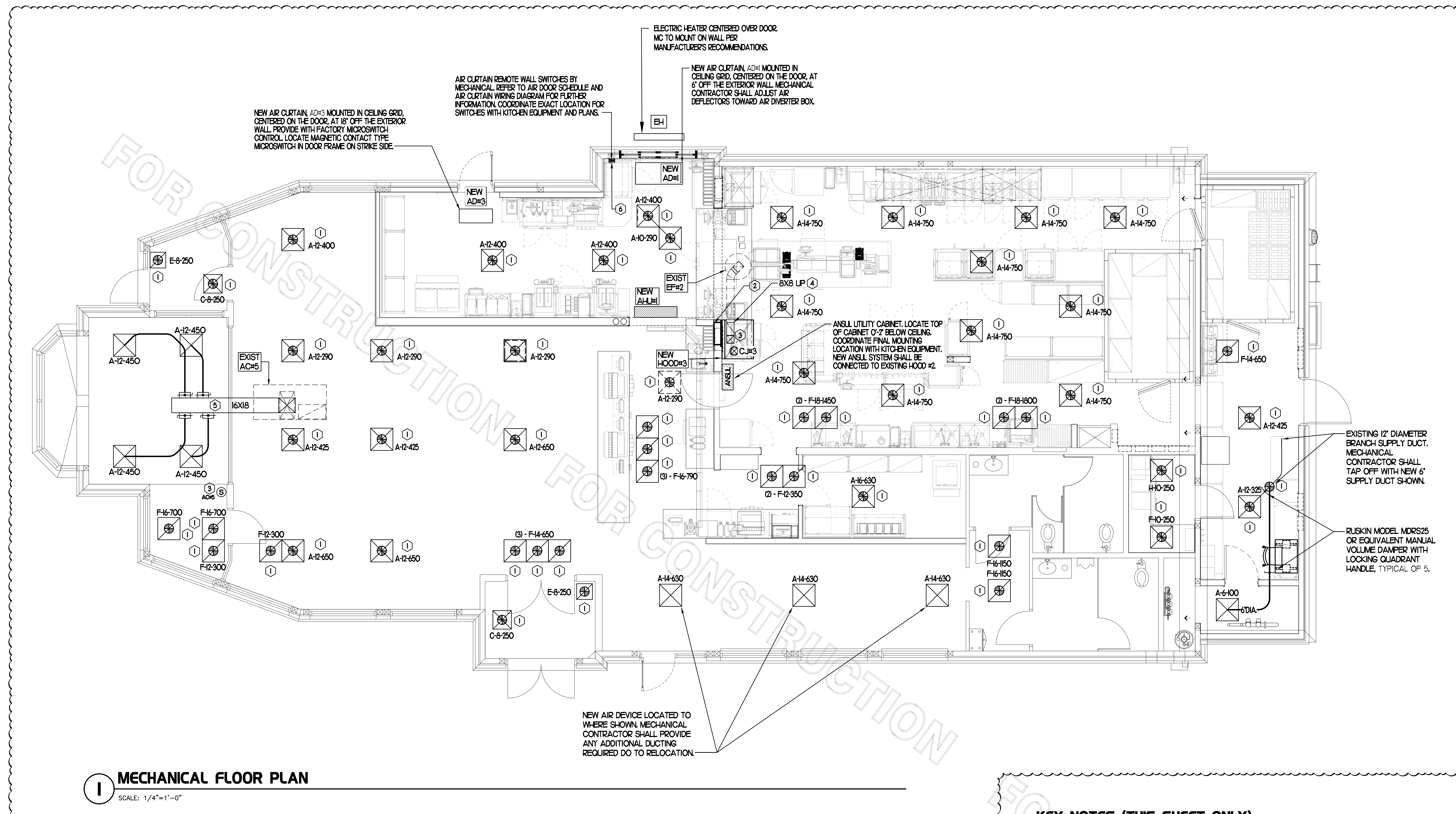
FSR#01143
BUILDING TYPE / SIZE: S97-120

NO.	DATE	DESCRIPTION
1	01/12/24	Owner Changes

CONSULTANT PROJECT # RO 23001
PRINTED FOR CONSTRUCTION
DATE 2/24/2023
DRAWN BY BF

Information contained on this drawing and all digital files produced for above named project may not be reproduced or modified without express written or verbal consent from authorized project representatives.
SHEET MECHANICAL FLOOR PLAN
SHEET NUMBER

M1.1



MECHANICAL FLOOR PLAN
SCALE: 1/4"=1'-0"

BROMIC ELECTRIC HEATER SCHEDULE							
MARK	INPUT (KW)	FRAME SIZE			MOUNTING TYPE	MODEL	MANUFACTURER
		LENGTH	WIDTH	DEPTH			
ALL EH	6.0	56"	8.5"	3.5"	BRACKET	BH0420005	BROMIC
NOTES	<ul style="list-style-type: none"> CHICK-FIL-A HAS A NATIONAL ACCOUNT WITH BROMIC COMPANY FOR THE ELECTRIC HEATER PACKAGE. THE MECHANICAL CONTRACTOR SHALL PURCHASE THE ELECTRIC HEATERS DIRECTLY FROM BROMIC COMPANY. CONTACT BLAKE RUSSELL AT 858-381-4850, FOR PRICING AND AVAILABILITY. BROMIC HEATERS NOT PURCHASED THRU BROMIC COMPANY WILL NOT BE ACCEPTED. 						
REMARKS	<ol style="list-style-type: none"> STAINLESS STEEL LENS WITH BLACK EMISSIVE COATING. PROVIDE ENGRAVED PLASTIC LABEL AT EACH UNIT WITH UNIT DESIGNATION IN 1" HIGH WHITE LETTERS ON A BLACK BACKGROUND. PROVIDE WITH MOUNTING BRACKETS PER MANUFACTURER'S RECOMMENDATIONS. 						

AIR DOOR SCHEDULE									
MARK	CFM	VELOCITY	HEATING CAP	HP	AREA SERVED	MODEL	MANUFACTURER	REMARKS	
ADH1 NEW	1543	2336	10 KW	3/4	DRIVE THRU	CHA-481B	POWERED-AIRE	1235	
ADH2 EXIST	-	-	-	-	REAR DOOR	EXISTING	EXISTING	-	
ADH3 NEW	1266	2757	NA	3/4	DRIVE THRU DOOR	CHA-136	POWERED-AIRE	124	
NOTES	<ul style="list-style-type: none"> CHICK-FIL-A HAS A NATIONAL ACCOUNT WITH TOM BARRROW COMPANY FOR THE AIR DOORS. THE MECHANICAL CONTRACTOR SHALL PURCHASE THE AIR DOORS DIRECTLY FROM TOM BARRROW COMPANY. CONTACT MR. SCOTT GEORGE AT 404-351-0100, FOR PRICING AND AVAILABILITY. AIR DOORS NOT PURCHASED THRU TOM BARRROW COMPANY WILL NOT BE ACCEPTED. 								
REMARKS	<ol style="list-style-type: none"> FACTORY PROVIDED, WIRED, AND UNIT MOUNTED SPEED CONTROLLER LOCATED ABOVE CEILING. FACTORY WIRED DISCONNECT. FACTORY PROVIDED, FIELD INSTALLED REMOTE WALL SWITCHES FOR HEATING ON/OFF AND FAN ON/AUTO SWITCH. SEE AIR CURTAIN WIRING DIAGRAM DETAIL. FACTORY PROVIDED MAGNETIC DOOR CONTACT WITH FACTORY INSTALLED LOW VOLTAGE CONTROLS LOCATED IN AIR DOOR CABINET. UNIT TO BE MOUNTED PER FOUR 3/8" - 16 THREADED INSERTS FOR INSTALLING RODS. RODS SHALL NOT EXTEND MORE THAN 3/4" INTO AIR CURTAIN. PROVIDE WITH DIVERTER BOX FROM TOM BARRROW COMPANY. PROVIDE WITH MOUNTING BRACKETS PER MANUFACTURER'S RECOMMENDATIONS. INSTALL PER MANUFACTURER'S MOUNTING INSTRUCTIONS. 								

DUCTLESS SPLIT SYSTEM HEAT PUMP UNIT SCHEDULE													
MARK	COOLING CAPACITY (MBH)		HEATING CAPACITY (MBH)		EFFICIENCIES		FAN SECTION (CFM)	ELECTRICAL DATA		R-410A MODEL	MFR		
	MIN	MAX	MIN	MAX	SEER	HSPFF	AIR FLOW (NET)	MCA	MDCP	VOLTAGE	AHU	CU	
AHU/CUH NEW	110	990	95	470	18.6	10.1	635-750-630	2.4	35	208/1/60	ACC068ND04HA	ACC068BD04HA	SAMSUNG
NOTES	<ul style="list-style-type: none"> MECHANICAL CONTRACTOR SHALL PURCHASE THE SPLIT SYSTEM HEAT PUMP DIRECTLY FROM TRANS/MITSUBISHI. CONTACT MR. ISAAC LOCKETT AT 678-775-4226, FOR PRICING AND AVAILABILITY. 												
REMARKS	<ol style="list-style-type: none"> ELECTRICIAN TO PROVIDE NON-FUSED DISCONNECT. MECHANICAL TO PROVIDE AND INSTALL REFRIGERANT PIPING AS PER MFR RECOMMENDATIONS. PROVIDE ENGRAVED PLASTIC LABEL AT AHU AND CU WITH 1" HIGH WHITE LETTERS ON A BLACK BACKGROUND RIVETED TO UNIT CABINET. PROVIDE WITH ADEQUATE REFRIGERANT LINE SET. FIELD VERIFY DISTANCE FROM WHERE CONDENSER IS TO BE SET TO AIR HANDLER LOCATION PRIOR TO ORDERING. PROVIDE OUTDOOR UNIT WITH SNOW ACCUMULATION PREVENTION OPTION. PROVIDE WITH WALL MOUNTED THERMOSTAT (MHR-HR000A). USE TWO-WIRE STANDARD, NON-POLAR CONTROL WIRE TO CONNECTOR COM2 ON INDOOR UNIT CONTROLLER. PROGRAM THERMOSTAT CONTROLS TO MATCH DRIVE-THRU SETPOINTS. PROVIDE MIM-B14 CONNECTOR AT INDOOR UNIT (CONNECTOR QN3), WIRE ORANGE AND RED WIRES TO SPARE POLE ON RELAY R-1 IN SUNCOAST T-500 PANEL (TERMINALS 5 AND 6 RESPECTIVELY) AND CAP THE BROWN WIRE. PROVIDE WITH CONDENSATE PUMP (BLUE DIAMOND MAXI BLUE MODEL# X87-72). 												

LEGEND		
A-12-400	TYPE - NECK SIZE - CFM	KEY NOTE REFERENCE
	SPIN-IN FITTINGS, M/W, NO SCOOP	EXISTING START COLLAR
	SPIN-IN HARD DIFFUSER	EXISTING RUNOUT TO REMAIN
	SPIN-IN FLEXIBLE DIFFUSER	EXISTING RETURN/EXHAUST (TYP)
	REMOTE TEMPERATURE SENSOR	EXISTING SUPPLY DIFFUSER (TYP)
	REMOTE HUMIDITY SENSOR	EXISTING DUCT (TYP)

KEY NOTES (THIS SHEET ONLY)

- CONNECT NEW AIR DEVICE TO EXISTING TAKE-OFF. IF NECESSARY, MECHANICAL CONTRACTOR SHALL PROVIDE AND INSTALL NEW DUCT IN ORDER TO MAKE CONNECTION TO AIR DEVICE IN NEW LOCATION. ANY FLEX DUCT USED SHALL NOT BE LONGER THAN 4'-0". SEE DETAIL 3/M2. COORDINATE AIR DEVICE LOCATIONS WITH ARCHITECTURAL REFLECTED CEILING PLAN.
- INSTALL NEW DOUBLE PIN & SLEEVE BOX FOR 4TH OPEN FRYER. SEE SHEET M-101 FOR FURTHER INFORMATION. CONTRACTOR SHALL BE RESPONSIBLE FOR COORDINATING INSTALLATION OF NEW DOUBLE PIN & SLEEVE BOX WITH ALL RESPECTIVE TRADES.
- RELOCATE EXISTING REMOTE TEMP SENSOR FOR ROOFTOP UNIT ON WALL SHOWN AT 5'-0" AFF (OR ABOVE WAINSCOTTING IF APPLICABLE). ROUTE NEW WIRING FOR REMOTE TEMP SENSOR TO TSTAT IN TEMP CONTROL CABINET. ROUTE NEW WIRING FOR HUMIDITY SENSOR TO UNIT ON ROOF.
- GREASE DUCT UP FROM FULL SIZE OF HOOD COLLAR. TRANSITION TO 8"X8" EXHAUST DUCT AND MAKE CONNECTION TO EXISTING AS SHOWN.
- BRANCH TAKE-OFFS SHALL NOT BE LOCATED CLOSER THAN 3'-0" FROM ANY ELBOW INCLUDING THE SUPPLY AIR DROP FROM CURB.

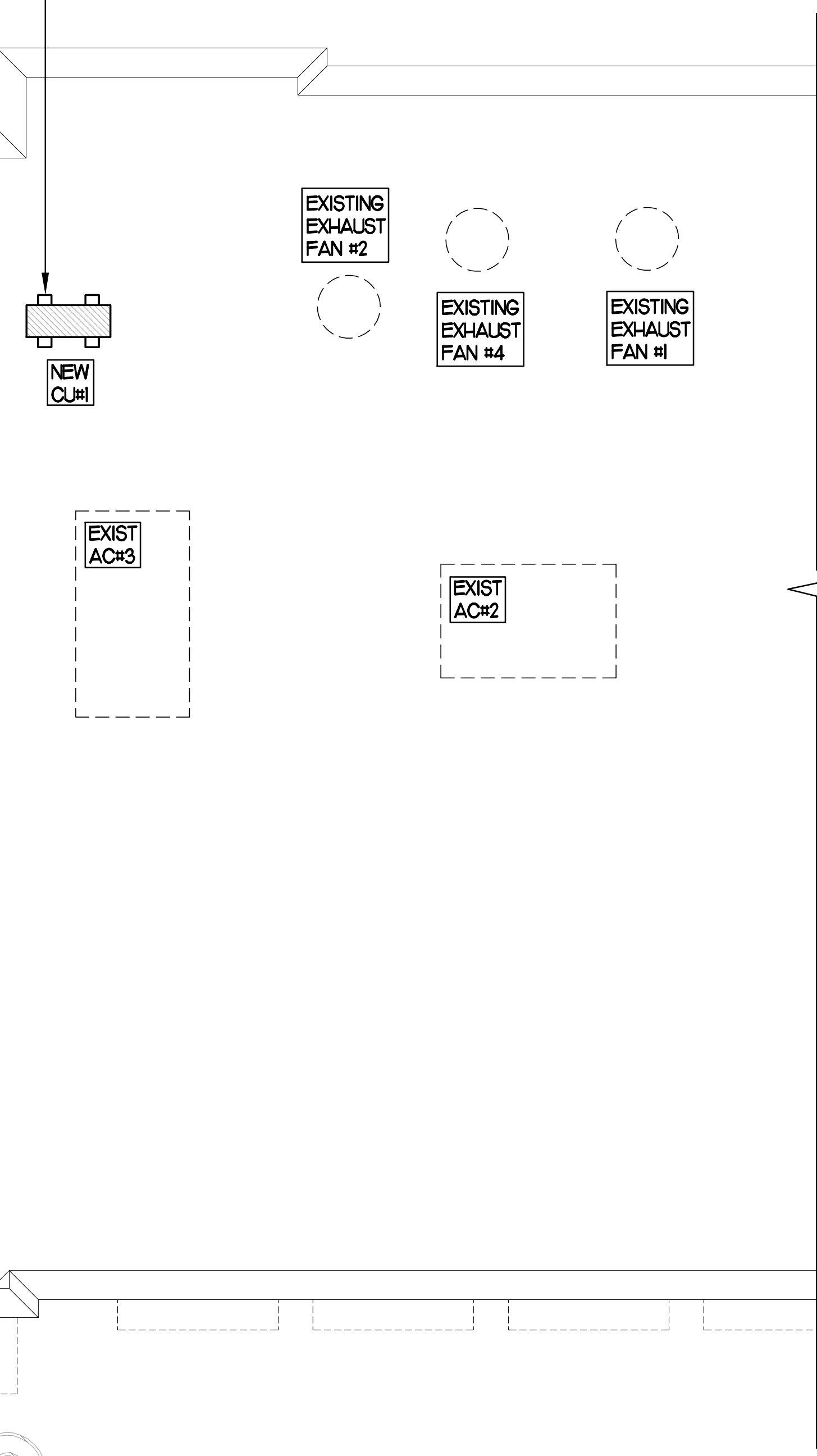
GENERAL NOTES

- COORDINATE NEW WORK WITH EXISTING CONDUITS, STRUCTURE AND PIPING. FIELD VERIFY EXISTING CONDITIONS PRIOR TO COMMENCING WORK. CONTRACTOR TO NOTIFY DESIGN TEAM WITHOUT DELAY IF ACTUAL LOCATION OF EXISTING MECHANICAL EQUIPMENT DOES NOT MATCH FLOOR PLAN.

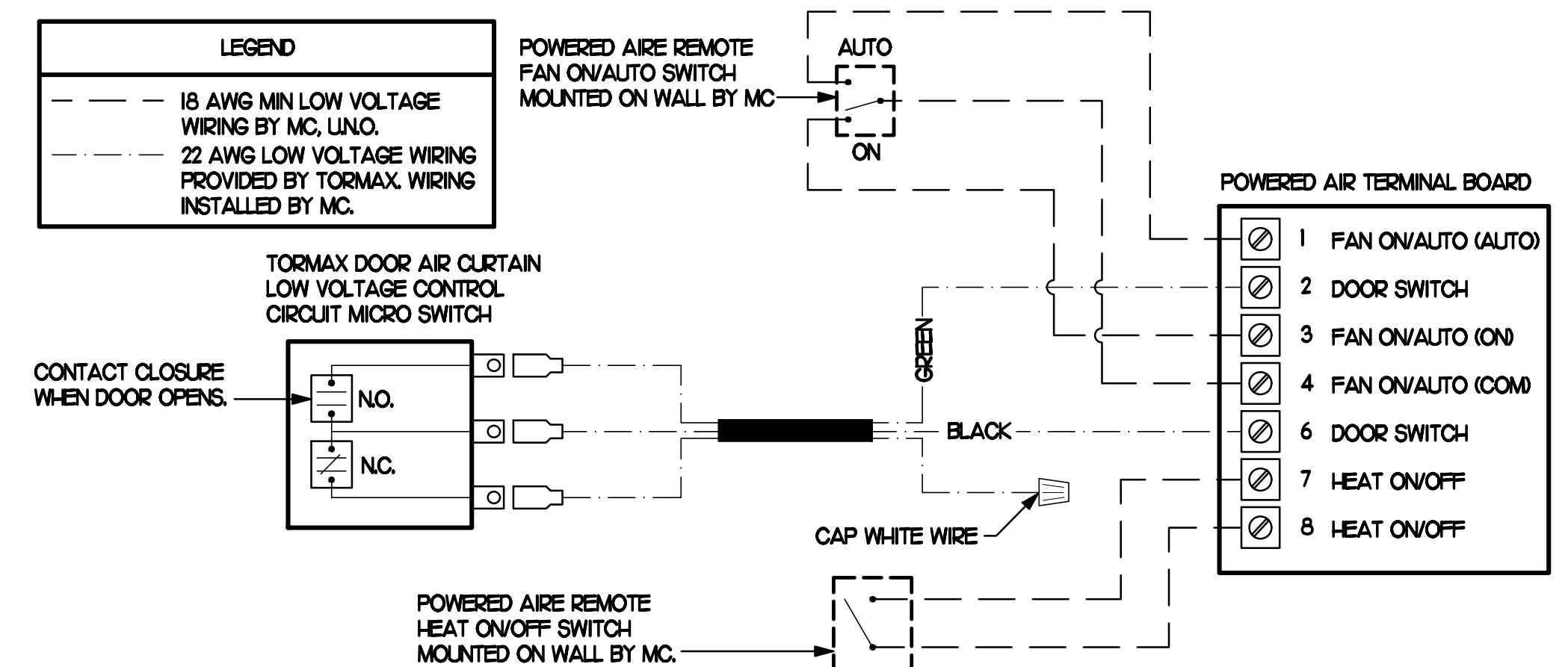
EXISTING CONDITIONS SHOWN ARE FROM PREVIOUS DRAWINGS. MECHANICAL CONTRACTOR SHALL FIELD VERIFY EXACT LOCATIONS OF ALL DUCT AND DIFFUSERS. IF MAJOR DIFFERENCES OCCUR IN FIELD, CONTACT CHICK-FIL-A CONSTRUCTION MANAGER.

FOR CONSTRUCTION

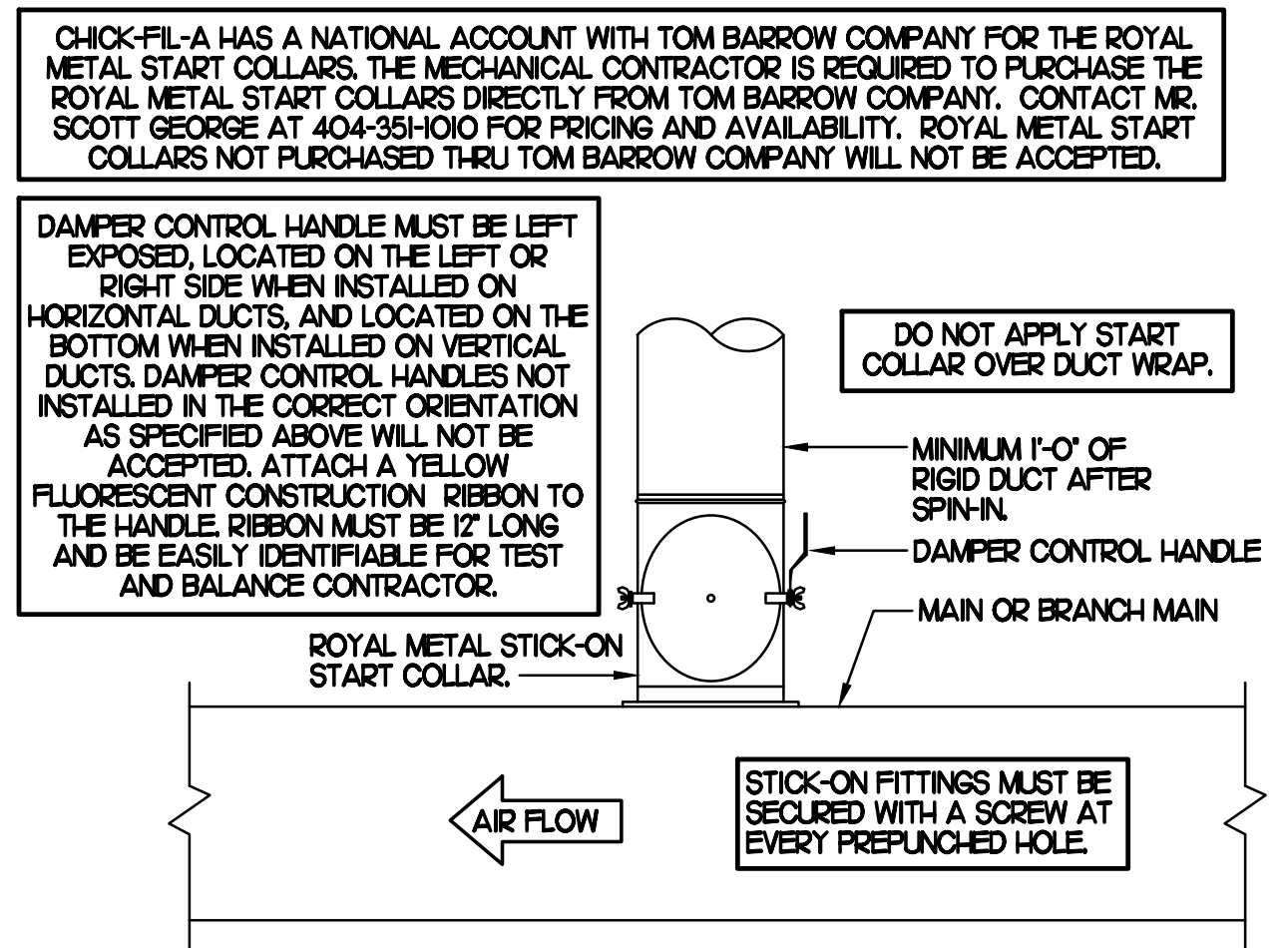
SET CONDENSING UNIT ON ROOF USING TWO CURBS PLUS CPESH EQUIPMENT CURBS. SECURE CONDENSING UNIT TO CURBS ARRANGED IN PARALLEL. SET LONG SIDE OF CURB PARALLEL TO ROOF SLOPE. FLASH INTO ROOF BY GC. COORDINATE EXACT LOCATION WITH STRUCTURAL DRAWINGS. ALL MAINTENANCE CLEARANCES OF NEW AND EXISTING EQUIPMENT SHALL BE MAINTAINED.



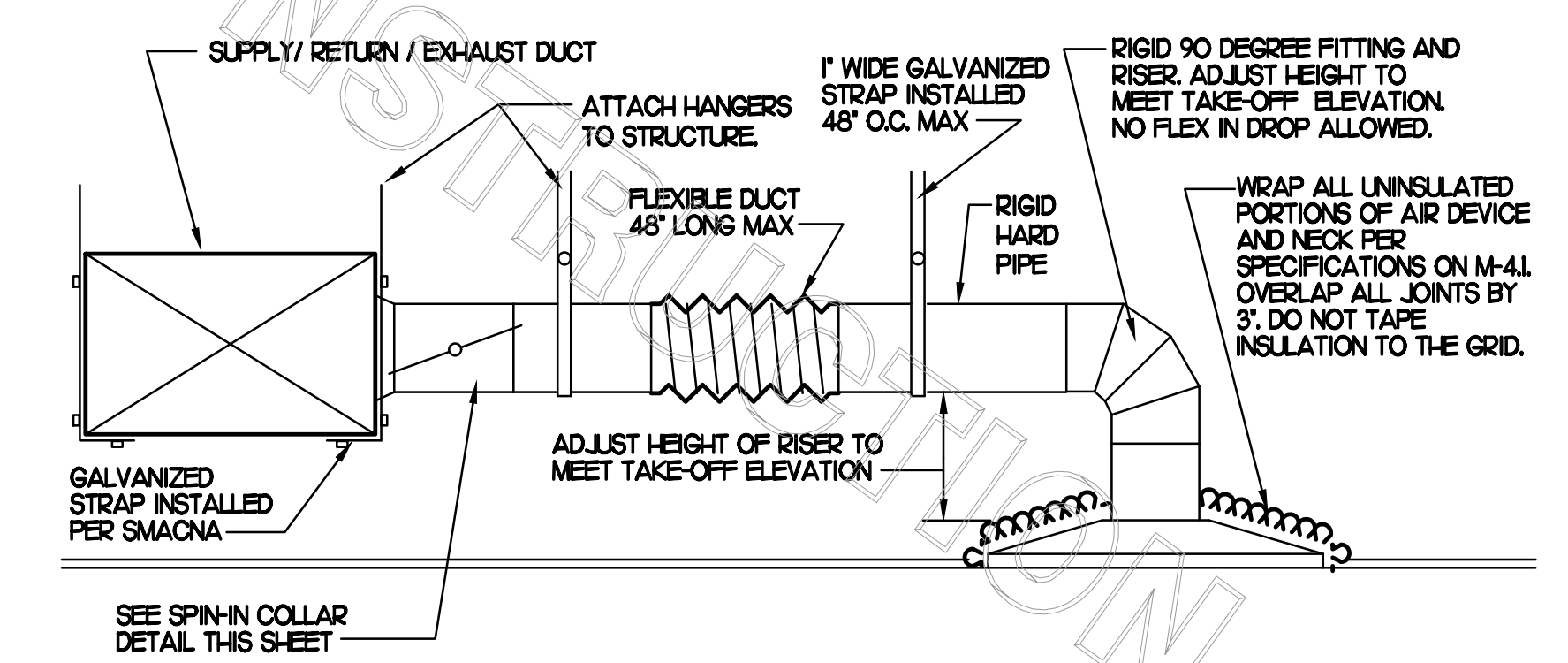
1 MECHANICAL ROOF PLAN
SCALE: 1/4"=1'-0"



4 AIR CURTAIN WIRING DIAGRAM
NO SCALE



3 START COLLAR
NO SCALE

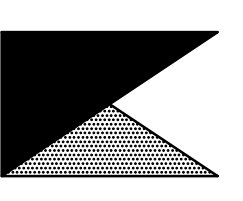


2 SAG/RAG/GRILLE TAKE-OFF
NO SCALE



Chick-fil-A

Chick-fil-A
5200 Buffington Road
Atlanta, Georgia 30349



Kurzynske & Associates
CONSULTING ENGINEERS
2705 Lebanon Pike - Suite One
Nashville, Tennessee 37214
Telephone: (615) 255-5203

I HEREBY CERTIFY THAT THESE PLANS HAVE BEEN PREPARED UNDER MY SUPERVISION AND THAT TO THE BEST OF MY KNOWLEDGE, THE SAME COMPLY WITH ALL RULES, REGULATIONS, AND ORDINANCES OF TUSSEVILLE, AL RELATING TO STRUCTURES AND BUILDINGS.



CHICK-FIL-A
Trussville FSU
5886 Trussville Crossings Pkwy.
Birmingham, AL. 35235

FSR#01143
BUILDING TYPE / SIZE: S97-120

REVISION SCHEDULE		
NO.	DATE	DESCRIPTION
1	01/12/24	Owner Changes

CONSULTANT PROJECT # RO 23001
PRINTED FOR CONSTRUCTION
DATE 2/24/2023
DRAWN BY BF

Information contained on this drawing and in all digital files produced for above named project may not be reproduced in any manner without express written or verbal consent from authorized project representatives.
SHEET
MECHANICAL
ROOF PLAN
SHEET NUMBER

M1.2



Chick-fil-A

Chick-fil-A
5200 Buffington Road
Atlanta, Georgia 30349



Kurzynske
& Associates
CONSULTING ENGINEERS
2705 Lebanon Pike - Suite One
Nashville, Tennessee 37214
Telephone: (615) 255-5203

I HEREBY CERTIFY THAT THESE PLANS HAVE BEEN PREPARED UNDER MY SUPERVISION AND THAT TO THE BEST OF MY KNOWLEDGE, THE SAME COMPLY WITH ALL RULES, REGULATIONS AND ORDINANCES OF TRUSSVILLE, AL RELATING TO STRUCTURES AND BUILDINGS.



CHICK-FIL-A
Trussville FSU
5886 Trussville Crossings Pkwy.
Birmingham, AL. 35235

FSR#01143
BUILDING TYPE / SIZE: S97-120

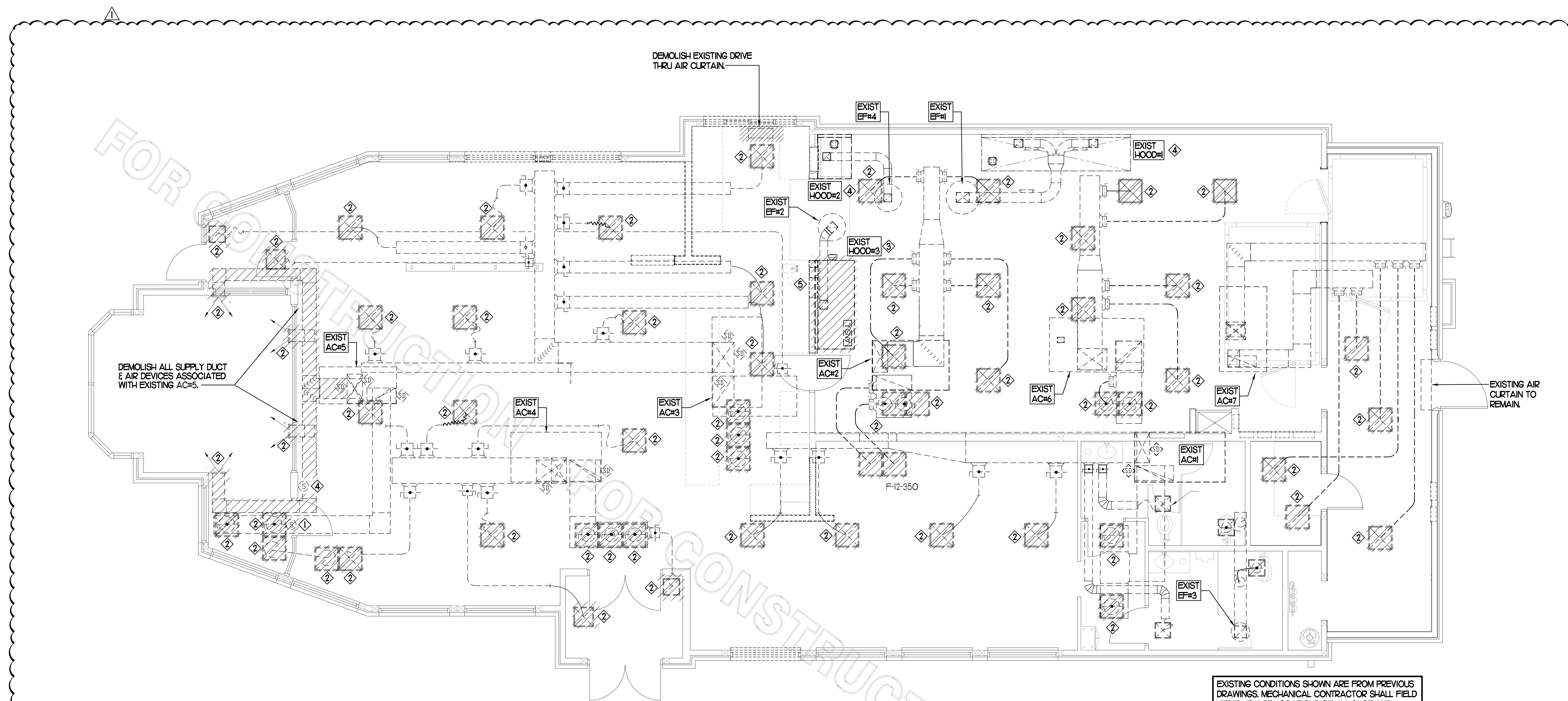
REVISION SCHEDULE		
NO.	DATE	DESCRIPTION
1	01/12/24	Owner Changes

CONSULTANT PROJECT # RO 23001
PRINTED FOR CONSTRUCTION
DATE 2/24/2023
DRAWN BY BF

Information contained on this drawing and all digital files produced for above named project may not be reproduced in any manner without express written or verbal consent from authorized project representatives.

SHEET MECHANICAL DEMO PLAN
SHEET NUMBER

M0.1



I MECHANICAL DEMOLITION FLOOR PLAN
SCALE: 1/4"=1'-0"

DEMOLITION NOTES

- CONTRACTOR IS RESPONSIBLE FOR OBTAINING ALL NECESSARY PERMITS AND PAYING ALL APPLICABLE FEES.
- DISPOSAL OF EQUIPMENT AND MATERIALS REQUIRED TO BE REMOVED SHALL BE THE RESPONSIBILITY OF THE CONTRACTOR PERFORMING THE WORK.
- DE-ENERGIZE ALL ELECTRICAL CIRCUITS RELATED TO EQUIPMENT THAT WILL BE MOVED OR REMOVED PRIOR TO STARTING WORK. DE-ENERGIZED CIRCUITS SHALL BE PROTECTED WITH LOCKING DEVICES USING APPROPRIATE WARNING LABELS.
- MECHANICAL CONTRACTOR SHALL BE RESPONSIBLE FOR PATCHING ROOF AFTER REMOVAL OF EXISTING MECHANICAL EQUIPMENT. SEE ARCHITECTURAL DRAWINGS FOR ROOF PATCHING REQUIREMENTS.
- EXCEPT WHERE NOTED, EXISTING REMOTE TEMPERATURE &/OR HUMIDITY SENSORS TO REMAIN. IF DURING RENOVATION PURPOSES CONTROLS SHALL BE TAKEN DOWN, MECHANICAL CONTRACTOR SHALL BE RESPONSIBLE FOR REINSTALLING AND TO PROVIDE ANY ADDITIONAL WIRING NEEDED. VERIFY EXISTING UNIT CONTROLS ARE IN GOOD WORKING ORDER. IF NOT, CONTACT CHICK-FIL-A CONSTRUCTION MANAGER.
- MECHANICAL CONTRACTOR SHALL REPLACE FILTERS FOR ALL RTUs AT END OF PROJECT AND PRIOR TO REOPENING. MC TO PROVIDE PROPOSAL TO FACILITIES MANAGER, CONSTRUCTION MANAGER, AND OPERATOR TO CORRECT EXISTING RTU PUNCH ITEMS IDENTIFIED BY HALTON.
- CONTRACTOR SHALL INDICATE SALVAGE VALUE IN BID FOR ROOFTOP UNITS BEING REPLACED.

DEMOLITION LEGEND	
	EXISTING EQUIPMENT, DUCT, AIR DEVICE ETC. TO REMAIN INTACT
	EQUIPMENT, DUCT, AIR DEVICE ETC. TO BE DEMOLISHED

DEMOLITION KEY NOTES

- EXISTING REMOTE TEMPERATURE SENSOR AND/OR REMOTE HUMIDITY SENSOR TO BE REPLACED WITH NEW. DEMOLISH ASSOCIATED CONTROL WIRING. SEE SHEET M-201 FOR FURTHER INFORMATION.
- DETACH AND DEMOLISH EXISTING AIR DEVICE SECURE DUCT ABOVE CEILING GRID FOR RE-CONNECTION. SEE SHEET M-201 FOR NEW CONNECTION.
- DEMOLISH EXISTING HOOD, ASSOCIATED GREASE DUCT AND EXHAUST FAN, AND ITS ASSOCIATED ROOF CURB TO REMAIN. CAP EXISTING EXHAUST DUCT FOR FUTURE CONNECTION TO NEW. SEE SHEET M-201.
- EXISTING REMOTE TEMPERATURE SENSOR AND/OR REMOTE HUMIDITY SENSOR TO REMAIN.
- EXISTING SINGLE PIN & SLEEVE BOX TO BE DEMOLISHED AND REPLACED WITH DOUBLE PIN & SLEEVE BOX. COORDINATE WITH ELECTRICAL CONTRACTOR. SEE NEW FLOOR PLAN FOR FURTHER INFORMATION.

HOOD SCHEDULE											
MARK	EXHAUST CFM	SP • TAB PORT	CAPTURE JET CFM & SP.	TYPE	COLLAR SIZE	WIDTH	DEPTH	HEIGHT	MANUFACTURER	MODEL	REMARKS
HOOD#1	1700	--	--	--	Ø 9"x8"	--	--	--	EXISTING	--	--
HOOD#2	701	--	--	--	8"x8"	--	--	--	EXISTING	--	--
HOOD#3	701	0.30'	30" • 0.29'	BACK SHELF	8"x8"	42"	34"	38"	HALTON	KVL-C	1

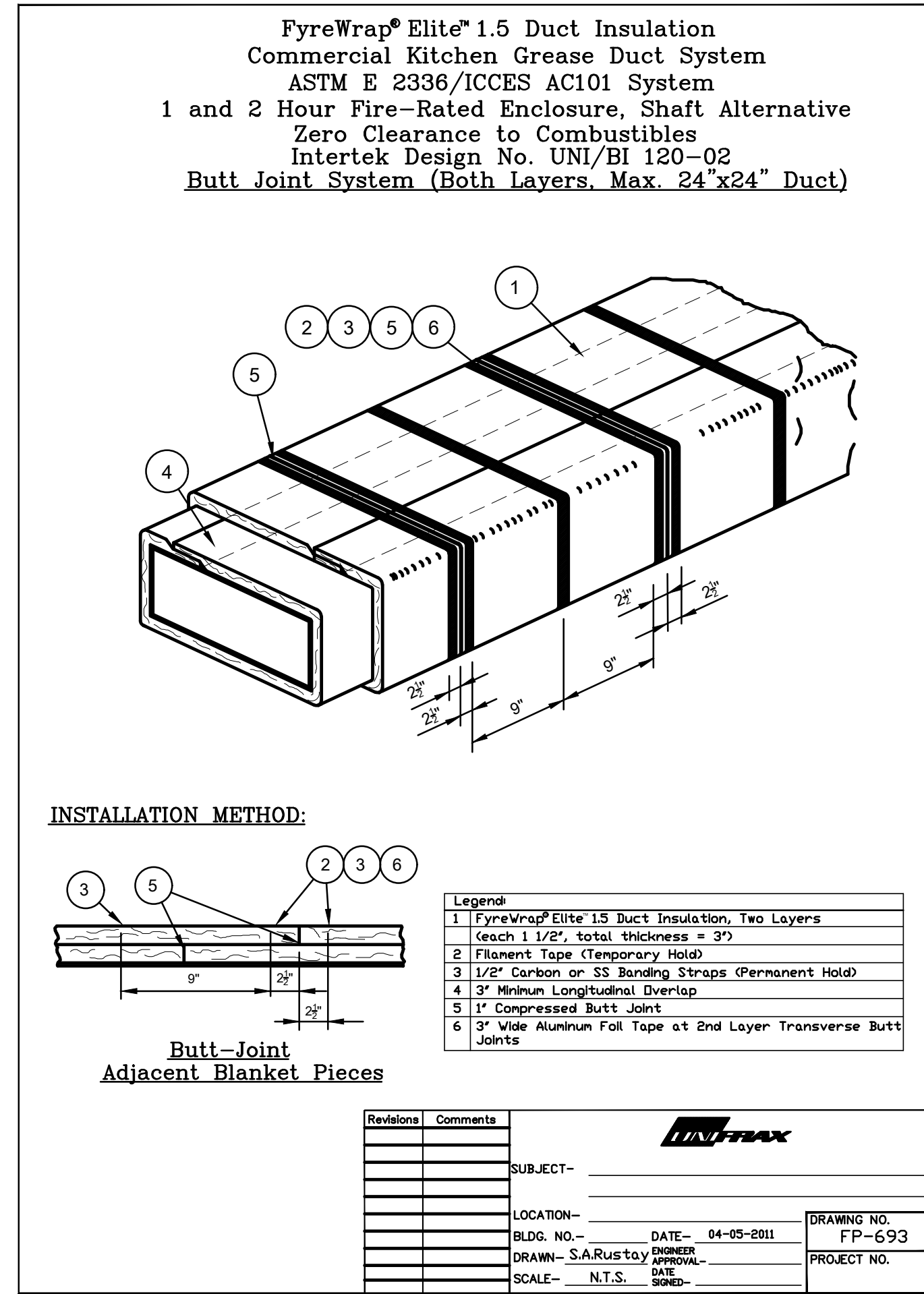
NOTES: DIMENSIONS OF HOODS INCLUDE BACK AND SIDE SPACERS (HEIGHT DOES NOT INCLUDE CLOSURE PANELS).

REMARKS: 1. HOOD SHOP DRAWINGS ARE INCLUDED FOR REFERENCE ON SHEETS M1-101. REFER TO SHOP DRAWINGS FOR HOOD OPTIONS AND CONSTRUCTION.

GREASE EXHAUST DUCT CLEARANCE NOTE
 CLEARANCES ABOVE CEILING ARE TIGHT. MECHANICAL CONTRACTOR TO FIELD VERIFY EXACT ROUTING AND CLEARANCES PRIOR TO FABRICATING GREASE EXHAUST DUCT.

CLEANOUT DOOR NOTE
 DUCT WRAP SHALL BE APPLIED TO THE CLEANOUT DOOR PER THE WRAP MFR'S INSTALLATION INSTRUCTIONS. NO EXCEPTIONS. ALSO, THE CLEANOUT DOOR MUST BE REMOVABLE WITHOUT TOOLS AND MUST BE CLEARLY AND PERMANENTLY LABELED.

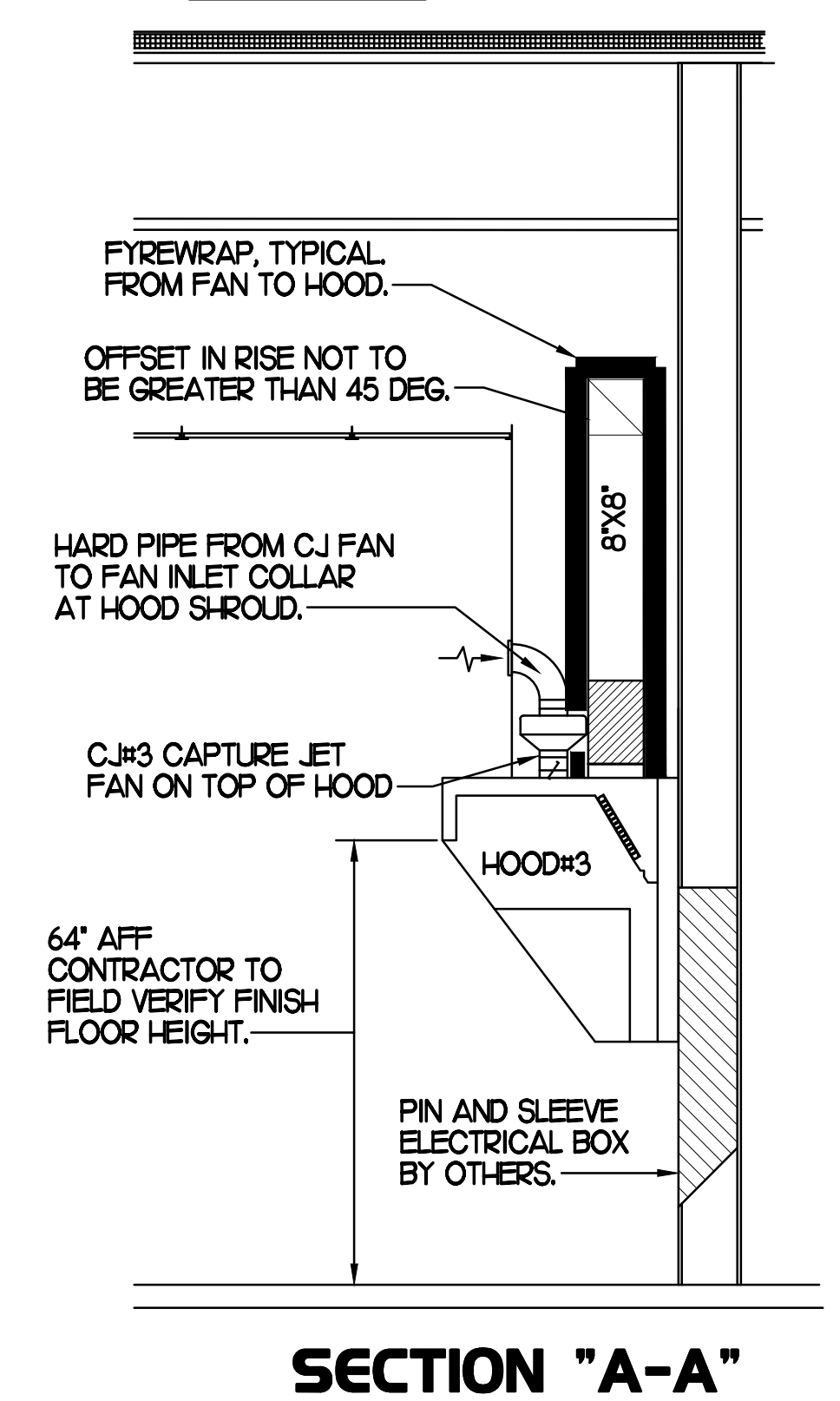
NOTE: SEE ARCHITECTURAL PLANS FOR EXACT HOOD LOCATIONS.



- ### KITCHEN HOOD SYSTEMS NOTES
- CHICK-FIL-A MAINTAINS A NATIONAL ACCOUNT WITH HALTON CO. FOR THE HOODS. CHICK-FIL-A WILL PURCHASE AND PROVIDE THE HOODS FOR INSTALLATION BY THE MECHANICAL CONTRACTOR. THE MECHANICAL CONTRACTOR SHALL BE RESPONSIBLE FOR RECEIVING THE HOODS. CONTACT HALTON CO. AT 270-237-5600 FOR MORE INFO.
 - THE FIRE SUPPRESSION SYSTEM SHALL CONSIST OF A COMPLETE WET ANSUL SYSTEM FURNISHED BY HALTON. THE HOOD SHALL BE FURNISHED PRE-PIPED BY HALTON.
 - THE R-102 ANSUL FIRE SUPPRESSION SYSTEM EXTERNAL TO THE HOODS SHALL BE INSTALLED IN ACCORDANCE WITH HOOD MANUFACTURER'S SHOP DRAWINGS BY AN AUTHORIZED ANSUL SYSTEM INSTALLER SELECTED AND HIRED BY HALTON. COST FOR ANSUL INSTALLATION INCLUDED IN PRICE OF HOODS TO CFA.
 - HOOD EXHAUST DUCTWORK SHALL BE 16 GA. BLACK STEEL WITH CONTINUOUS LIQUID TIGHT WELD OF JOINTS & SEAMS.
 - TURNS IN GREASE EXHAUST DUCTWORK SHALL BE LONG RADIUS TYPE, WITH A CENTERLINE RADIUS R=3W/2, NO EXCEPTIONS ALLOWED. NO MITERED FITTINGS ALLOWED.
 - ALL STAINLESS STEEL CLOSURE PANELS SHALL BE SUPPLIED BY HOOD MANUFACTURER AND INSTALLED BY THE MECHANICAL CONTRACTOR ACCORDING TO MANUFACTURER'S RECOMMENDATIONS.
 - SLOPE ALL GREASE EXHAUST DUCT BACK TO HOOD AT 1/4" PER FOOT OF RUN.
 - WRAP NEW GREASE DUCT WITH UNIFRAX PYREWAP. INSULATION ON ACCESS DOORS SHALL BE INSTALLED ACCORDING TO MANUFACTURER'S INSTALLATION RECOMMENDATIONS. UNIFRAX PYREWAP PRODUCT USED SHALL MEET LOCAL CODE REQUIREMENTS.
 - SUPPORT HOODS WITH THREADED ROD AT EACH FACTORY SUPPORT POINT. EACH SUPPORT POINT MUST SUPPORT THE HOOD WEIGHT EQUALLY. ATTACH TO STRUCTURE AS DETAILED ON STRUCTURAL DRAWINGS. ATTACH HOOD TO WALL AT 16" INTERVALS ALONG FULL LENGTH OF HOOD ON TOP AND BOTTOM. ATTACHMENT TO WALL REQUIRES FIELD DRILLING OF SUPPORT ANGLE AT BACK OF HOODS. EACH WALL ATTACHMENT POINT MUST OCCUR AT A WALL STUD. ATTACHMENT HARDWARE TO BE #12-24 HEX HEAD SHEET METAL SCREW EQUAL TO TEXTRON SDS EDT265, LENGTH AS REQUIRED TO FULLY PENETRATE THE STUD.
 - MECHANICAL CONTRACTOR TO PROVIDE AND INSTALL SUNCOAST HES. SYSTEM FOR ALL HOODS. SEE HOOD FAN/EQUIPMENT INTERLOCK WIRING DIAGRAM ON THIS SHEET FOR MORE INFORMATION.

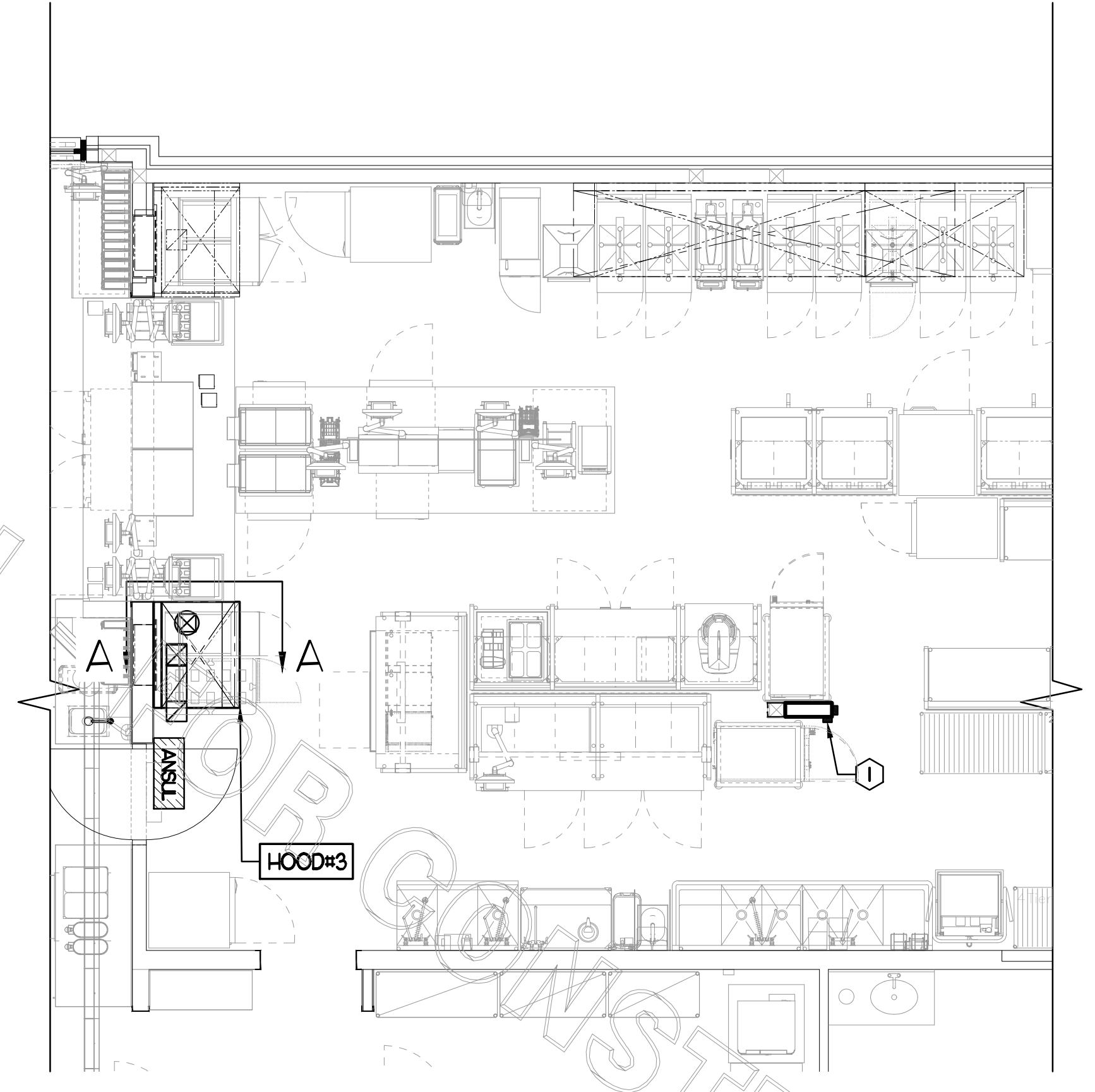
FOR CONSTRUCTION

SET RIGHT SIDE OF HOOD#3 FLUSH WITH FINISHED EDGE OF PASS THRU OPENING.



2 HOOD ELEVATIONS
 NONE

- ### KEY NOTES
- ANSUL PULL STATION SERVING NEW HOOD#3. LOCATE ANSUL PULL STATION BETWEEN 42" AND 48" AFF. COORDINATE EXACT LOCATION WITH KITCHEN EQUIPMENT ELEVATIONS. J-BOX AND CONDUIT ARE BY ELECTRICAL. PROVIDE WHITE BAKELITE LABEL WITH 1/4" HIGH LETTERS INDICATING THE HOODS SERVED, I.E. "PASS-THRU HOOD".



1 HOOD LAYOUT
 1/4" = 1'-0"



Chick-fil-A
 Chick-fil-A
 5200 Buffington Road
 Atlanta, Georgia 30349

Kurzynske & Associates
 CONSULTING ENGINEERS
 2705 Lebanon Pike - Suite One
 Nashville, Tennessee 37214
 Telephone: (615) 255-9203

I HEREBY CERTIFY THAT THESE PLANS HAVE BEEN PREPARED UNDER MY SUPERVISION AND THAT TO THE BEST OF MY KNOWLEDGE, THE SAME COMPLY WITH ALL RULES, REGULATIONS, AND ORDINANCES OF TISSUSVILLE, AL RELATING TO STRUCTURES AND BUILDINGS.



CHICK-FIL-A
 Trussville FSU
 5886 Trussville Crossings Pkwy.
 Birmingham, AL. 35235

FSR#01143
 BUILDING TYPE / SIZE: S97-Y20

REVISION SCHEDULE		
NO.	DATE	DESCRIPTION
1	01/12/24	Owner Changes

CONSULTANT PROJECT # RO 23001
 PRINTED FOR CONSTRUCTION
 DATE 2/24/2023
 DRAWN BY BF

Information contained on this drawing and all digital files produced for above named project may not be reproduced in any manner without express written or verbal consent from authorized project representatives.
 SHEET: HOOD DETAILS
 SHEET NUMBER

M2.1

I. SECTION C15000 - MECHANICAL SPECIFICATIONS

PART I - GENERAL

1.01 SCOPE

- A. IT IS THE RESPONSIBILITY OF CONTRACTOR TO READ ALL SPECIFICATIONS AND CONSULT ALL DRAWINGS WHICH MAY AFFECT THE INSTALLATION AND COORDINATION OF HIS WORK WITH OTHER TRADES. CONTRACTOR SHALL COORDINATE AND MAKE MINOR ADJUSTMENTS IN LOCATION OF EQUIPMENT AND MATERIALS AS NECESSARY TO SECURE COORDINATION.
- B. COMPLETED INSTALLATION SHALL CONFORM TO ALL APPLICABLE FEDERAL, STATE AND LOCAL CODES AND ORDINANCES, INCLUDING BUT NOT LIMITED TO THE LATEST APPROVED EDITIONS OF NFPA-96, NFPA-90A, NFPA-54, SMACNA, ASHRAE 90.1 AND ASHRAE 62.
- C. SYSTEM LAYOUT IS SCHEMATIC AND EXACT LOCATIONS SHALL BE DETERMINED BY STRUCTURAL CONDITIONS, COORDINATION WITH OTHER TRADES, COORDINATION WITH FINISHES AND OTHER CONDITIONS. STRUCTURAL SUPPORTS SHALL NOT BE CUT OR ALTERED TO ASSURE FIT OF HVAC SYSTEM. TEN FOOT CLEARANCE SHALL BE MAINTAINED BETWEEN OUTSIDE AIR INTAKES AND EXHAUST FANS AND PLUMBING VENT TERMINALS.
- D. CONTRACTOR SHALL BE RESPONSIBLE FOR ALL DEFECTS, REPAIRS AND REPLACEMENTS IN MATERIALS AND WORKMANSHIP FOR A PERIOD OF ONE (1) YEAR AFTER FINAL PAYMENT IS APPROVED. CONTRACTOR SHALL HONOR FACTORY WARRANTIES ON ALL EQUIPMENT PROVIDED AS PART OF THIS SYSTEM.
- E. UPON COMPLETION OF PROJECT, ALL SYSTEM EQUIPMENT AND MATERIALS SHALL BE IN NEW, CLEAN CONDITION WITH ALL DAMAGE RESTORED TO CONDITION ACCEPTABLE TO THE OWNERS REPRESENTATIVE. ALL EQUIPMENT, COMPONENTS AND DUCTWORK SHALL BE INSPECTED AND THOROUGHLY CLEANED, READY FOR USE. AT COMPLETION OF JOB, ALL MISCELLANEOUS TOOLS, SCAFFOLDING, SURPLUS MATERIALS, RUBBISH AND DEBRIS SHALL BE REMOVED BY CONTRACTOR.
- F. CONTRACTOR SHALL PROVIDE TWO SETS OF 2" MERV 8 OR HIGHER THROW AWAY TYPE FILTERS. A CLEAN SET SHALL BE PROVIDED PRIOR TO TEST AND BALANCE AND AGAIN PRIOR TO OPENING.

PART II - PRODUCTS

- 2.02 DUCTWORK (C15735) (SEE DWG M-301 FOR ADDITIONAL GREASE DUCT SYSTEM REQ.)
 - A. ACCEPTABLE MANUFACTURERS OF INSULATION ARE MANVILLE, OWENS CORNING OR KNAUF.
 - B. ALL DUCTWORK SHALL BE SHEET METAL, UNLESS NOTED OTHERWISE (U.N.O.).
 - C. DUCT DIMENSIONS SHOWN ARE INSIDE CLEAR DIMENSIONS, U.N.O.
 - D. CONSTRUCTION OF DUCTWORK SHALL MEET SMACNA 1" W.C. PRESSURE CLASS STANDARD AND RECOMMENDATIONS. SMACNA SHALL BE FOLLOWED WITH RESPECT TO GAGE THICKNESS, JOINTS, REINFORCING, CONSTRUCTION, INSTALLATION AND SUPPORT FOR PRESSURE CLASS STATED. ALL TRANSVERSE JOINTS IN RECTANGULAR AND ROUND DUCT SHALL BE SEALED PER SMACNA SEAL CLASS C WITH U.L. DUCT MASTIC SEALANT APPROVED FOR INTENDED USE. DUCT TAPE IS NOT AN ACCEPTABLE SUBSTITUTE FOR MASTIC UNLESS EQUAL TO HARDCAST FOIL-GRIP 1402 BUTYL RUBBER ADHESIVE TAPE.
 - E. ALL DUCT INSULATION SHALL MEET MINIMUM R-VALUE REQUIRED BY ASHRAE 90.1 LATEST EDITION. ALL DUCT WRAP SHALL BE MINIMUM 2" THICK, 3/4 PCF AND 5.6 R-VALUE INSTALLED WITH EITHER A VAPOR BARRIER WITH MAXIMUM PERMEANCE 0.05 OR A MINIMUM 2 MIL ALUMINUM REINFORCED FOILKRAFT FACING.
 - F. ALL DUCT DROPS FROM THE ROOFTOP UNITS SHALL BE EXTERNALLY INSULATED.
 - G. SUPPLY AND RETURN AIR DUCTWORK SERVING ALL AREAS SHALL BE EXTERNALLY INSULATED.
 - H. ALL AIR CONVEYANCE COMPONENTS SUCH AS, BUT NOT LIMITED TO DUCT, DUCT PLENUMS, GRILLES/DIFFUSERS, BACK PANS, AND BOOTS SHALL BE INSULATED.

INSULATION TYPE IS COVERED ELSEWHERE IN THIS SPECIFICATION.

- I. TRUNK DUCTS SHALL BE ISOLATED FROM UNIT VIBRATION WITH THE USE OF NFPA AND U.L. APPROVED FLEXIBLE CONNECTORS INSTALLED AT THE TOP OF BOTH SUPPLY AND RETURN DROPS.
- J. INSULATED FLEXIBLE DUCT MAY BE UTILIZED FOR RUNOUTS TO GRILLES AND DIFFUSERS ONLY IN THE HORIZONTAL POSITION AND IN MAXIMUM LENGTHS OF 4'-0", NO EXCEPTIONS. SEE TAKE-OFF DETAIL ON DRAWING M-401.
- K. CONSTRUCTION OF FLEXIBLE DUCTWORK SHALL INCLUDE SPIRAL METAL HELIX BONDED TO A POLYESTER CORE, FIBERGLASS INSULATION WITH POLYETHYLENE OR MYLAR VAPOR BARRIER. ALL COMPONENTS SHALL HAVE APPROPRIATE U.L. APPROVAL AND SHALL BE EQUIVALENT TO THERMAFLEX MKE.
- L. FLEXIBLE DUCT SHALL BE INSTALLED PER THE "ADC FLEXIBLE DUCT PERFORMANCE AND INSTALLATION STANDARDS, 4TH ED" USING FOIL TAPE AND DRAWBAND ON THE INNER CORE AND TAPE OR DRAWBAND ON THE OUTER JACKET.
- M. DUCT TAPE SHALL BE EQUAL TO FASSON 181-B FX, 2-1/2" WIDE.
- N. SINGLE THICKNESS TURNING VANES SHALL BE INSTALLED AT 90 DEGREE TURNS IN SUPPLY DUCTWORK WHERE ANY ONE DIMENSION IS GREATER THAN 12".
- O. RADIUSSED ELBOWS MAY BE SUBSTITUTED FOR 90 DEGREE ELBOWS AT THE DISCRETION OF THE CONTRACTOR. CENTERLINE RADIUS EQUAL TO; R=W PER FIGURE NO. 2.2 IN SMACNA HVAC DUCT CONSTRUCTION STANDARDS.
- P. EXTERNAL INSULATION ON BOTTOM OF DUCTS 24" OR WIDER SHALL BE SUPPORTED WITH STICK PINS ON 18" CENTERS. STICK PIN WASHERS SHALL BE COVERED WITH DUCT TAPE OR MASTIC.

PART III - EXECUTION

- 3.01 SCOPE
 - A. FURNISH AND INSTALL SYSTEM IN ACCORDANCE WITH REFERENCED STANDARDS, APPLICABLE CODES, MANUFACTURER'S RECOMMENDATIONS AND AS INDICATED ON DRAWINGS.
 - B. OWNER SHALL TEST AND BALANCE MECHANICAL SYSTEM IN ACCORDANCE WITH NCI OR AABC STANDARDS TO ASSURE CONFORMANCE WITH DESIGN. G.C. WILL MAKE MECHANICAL CONTRACTOR AVAILABLE DURING TEST AND BALANCE TO ASSIST TESTING AGENCY AND TO MAKE CORRECTIONS IMMEDIATELY NECESSARY. CONTRACTOR SHALL CORRECT ITEMS ON WRITTEN TEST AND BALANCE REPORT.
 - C. CONTRACTOR SHALL INSTRUCT THE OWNER'S REPRESENTATIVE IN ALL MATTERS PERTAINING TO THE PROPER MAINTENANCE OF EQUIPMENT FURNISHED UNDER THIS CONTRACT THROUGH DEMONSTRATION AND EXPLANATION OF OPERATING & MAINTENANCE MANUALS.
 - D. CONTRACTOR SHALL PROVIDE A "SAMPLE MAINTENANCE PROPOSAL" TO THE OWNER'S REPRESENTATIVE IN ALL MATTERS PERTAINING TO THE PROPER MAINTENANCE OF EQUIPMENT FURNISHED UNDER THIS CONTRACT.
 - E. CONTRACTOR SHALL COMPLETE A/C EQUIPMENT STARTUP DOCUMENTATION PROVIDED BY OWNER.

NATIONAL ACCOUNTS

- 1. HALTON HOODS - CHICK-FIL-A WILL PURCHASE AND PROVIDE THE HOODS FOR INSTALLATION BY THE MECHANICAL CONTRACTOR. THE MECHANICAL CONTRACTOR SHALL BE RESPONSIBLE FOR RECEIVING THE HOODS. CONTACT HALTON CO. AT 270-237-5600 FOR MORE INFO.

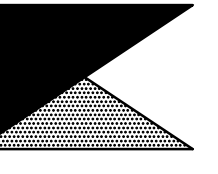
ELECTRIC WALL HEATER SCHEDULE

MARK	KW	FRAME SIZE (IN)		CFM	MOUNTING TYPE	MODEL	MANUFACTURER
		WIDTH	HEIGHT				
WH	15	16	21	175	SURFACE	HF3324TD-RP	MARKEL
CHICK-FIL-A HAS A NATIONAL ACCOUNT WITH TOM BARROW COMPANY FOR THE WALL HEATER. THE MECHANICAL CONTRACTOR IS REQUIRED TO PURCHASE THE WALL HEATER DIRECTLY FROM TOM BARROW COMPANY. CONTACT MR. SCOTT GEORGE AT 404-254-1010 FOR PRICING AND AVAILABILITY. WALL HEATERS NOT PURCHASED THRU TOM BARROW COMPANY WILL NOT BE ACCEPTED.							
REMARKS	1. AUTOMATIC FAN DELAY SWITCH AND INTEGRAL DISCONNECT. 2. INTEGRAL TAMPERPROOF THERMOSTAT SET AT 65 DEG. F. 3. CAPACITY SHOWN IS BASED ON 208V SERVICE. 4. CONFIRM ELECTRICAL CHARACTERISTICS WITH E-SHEETS PRIOR TO ORDERING EQUIPMENT. 5. POWDER COATED 16 GA. STEEL GRILLE WITH ALUMINUM FRAME. 6. AUTOMATIC RESET THERMAL LIMIT SWITCH. 7. TUBULAR STEEL ELEMENT WITH STEEL FINS.						



Chick-fil-A

Chick-fil-A
 5200 Buffington Road
 Atlanta, Georgia 30349



Kurzynske & Associates
 CONSULTING ENGINEERS
 2705 Lebanon Pike - Suite One
 Nashville, Tennessee 37214
 Telephone: (615) 255-5203

I HEREBY CERTIFY THAT THESE PLANS HAVE BEEN PREPARED UNDER MY SUPERVISION AND THAT TO THE BEST OF MY KNOWLEDGE, THE SAME COMPLY WITH ALL RULES, REGULATIONS, AND ORDINANCES OF THE STATE OF ALABAMA RELATING TO STRUCTURES AND BUILDINGS.



1-12-24

CHICK-FIL-A
 Trussville FSU
 5886 Trussville Crossings Pkwy.
 Birmingham, AL. 35235

FSR#01143
 BUILDING TYPE / SIZE: S97-Y20

NO.	DATE	DESCRIPTION
1	01/12/24	Owner Changes

CONSULTANT PROJECT # RO 23001
 PRINTED FOR CONSTRUCTION
 DATE 2/24/2023
 DRAWN BY BF

Information contained on this drawing and all digital files produced for above named project may not be reproduced in any manner without express written or verbal consent from authorized project representatives.

SHEET
 MECHANICAL
 SPECIFICATIONS

SHEET NUMBER

M3.1