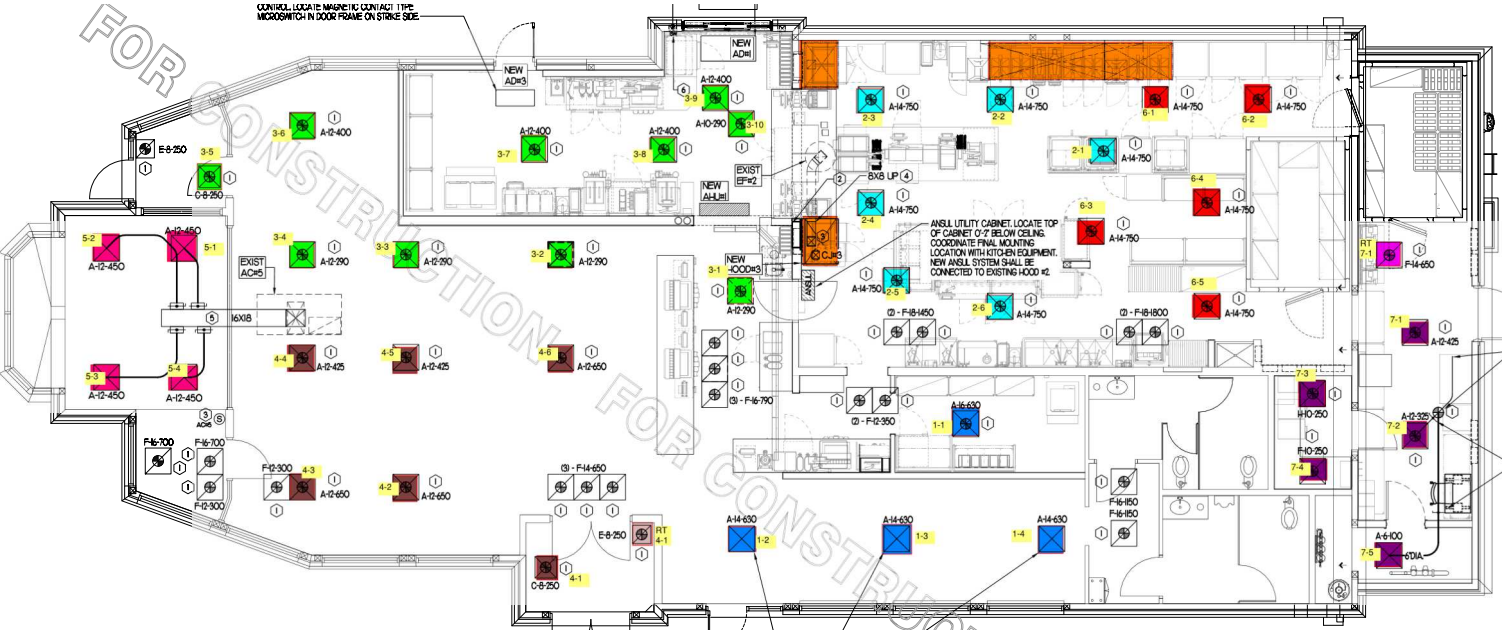


FOR CONSTRUCTION FOR CONSTRUCTION

CONTROL LOCATE MAGNETIC CONTACT TYPE MICROSWITCH IN DOOR FRAME ON STRIKE SIDE.



EXISTING 1/2 DIAMETER BRANCH SUPPLY DUCT. MECHANICAL CONTRACTOR SHALL TAP OFF WITH NEW 6\"/>

3/8 IN MODEL MESS30 OR EQUIVALENT MANUAL VOLUME DAMPER WITH LOCKING QUADRANT HANDLE TYPICAL OF 5.