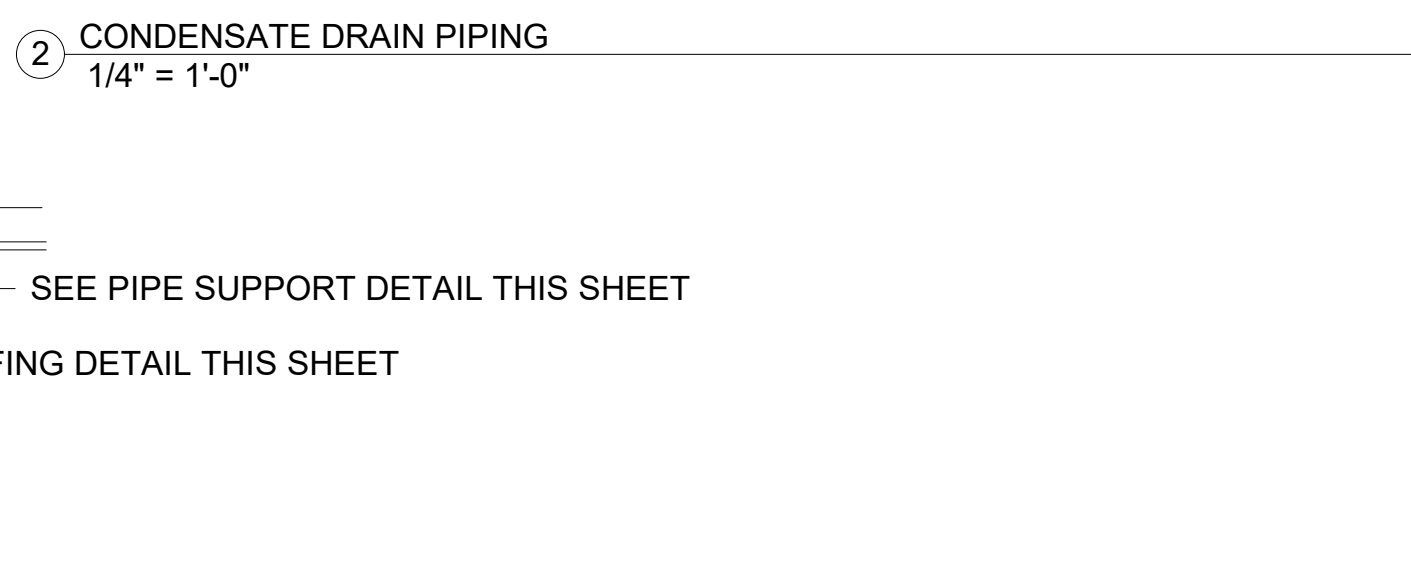
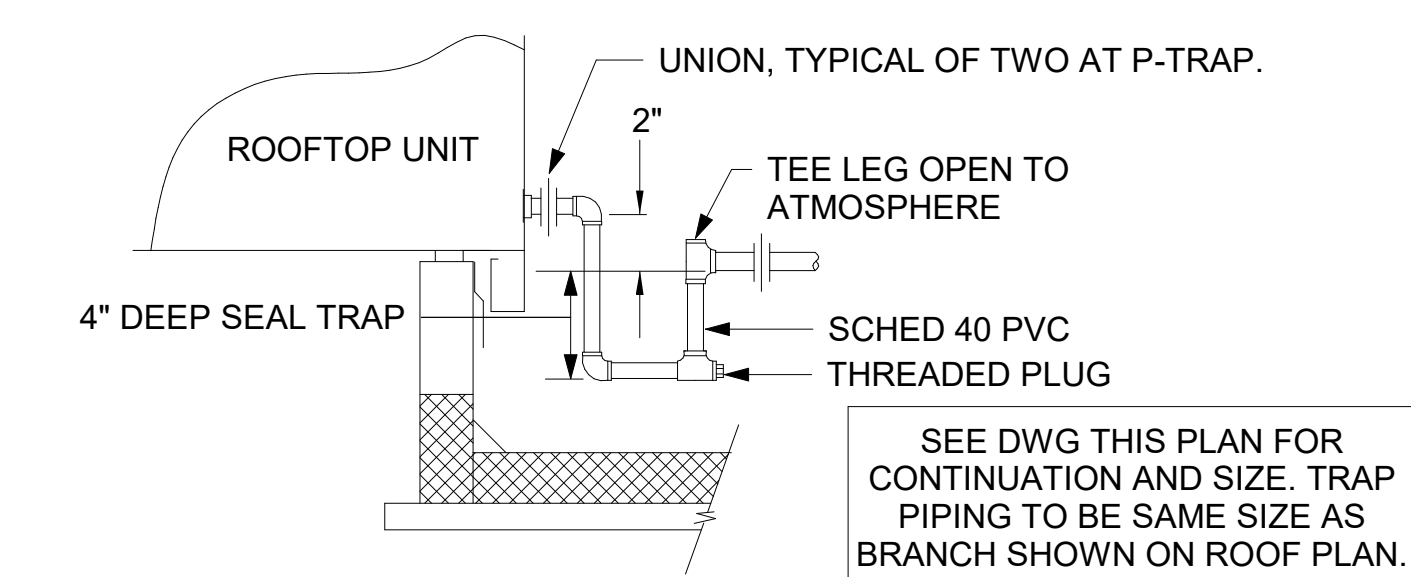


5. GAS CONNECTION SCHEDULE

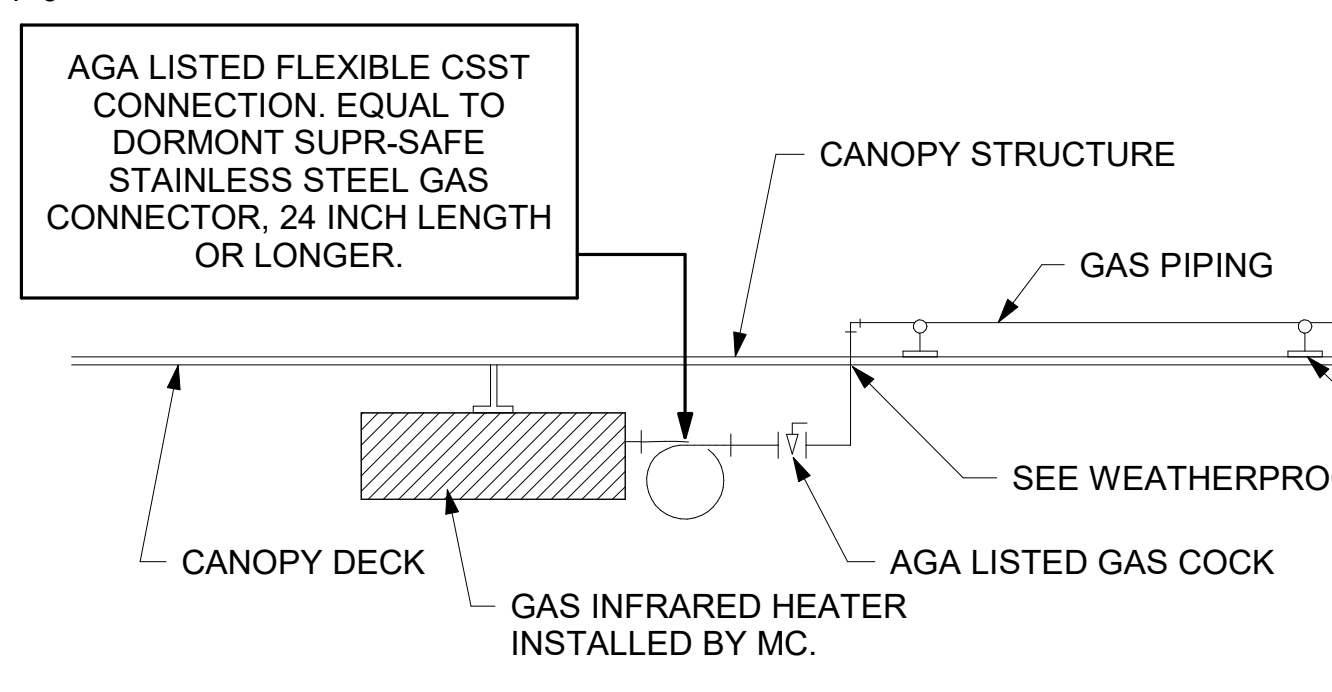
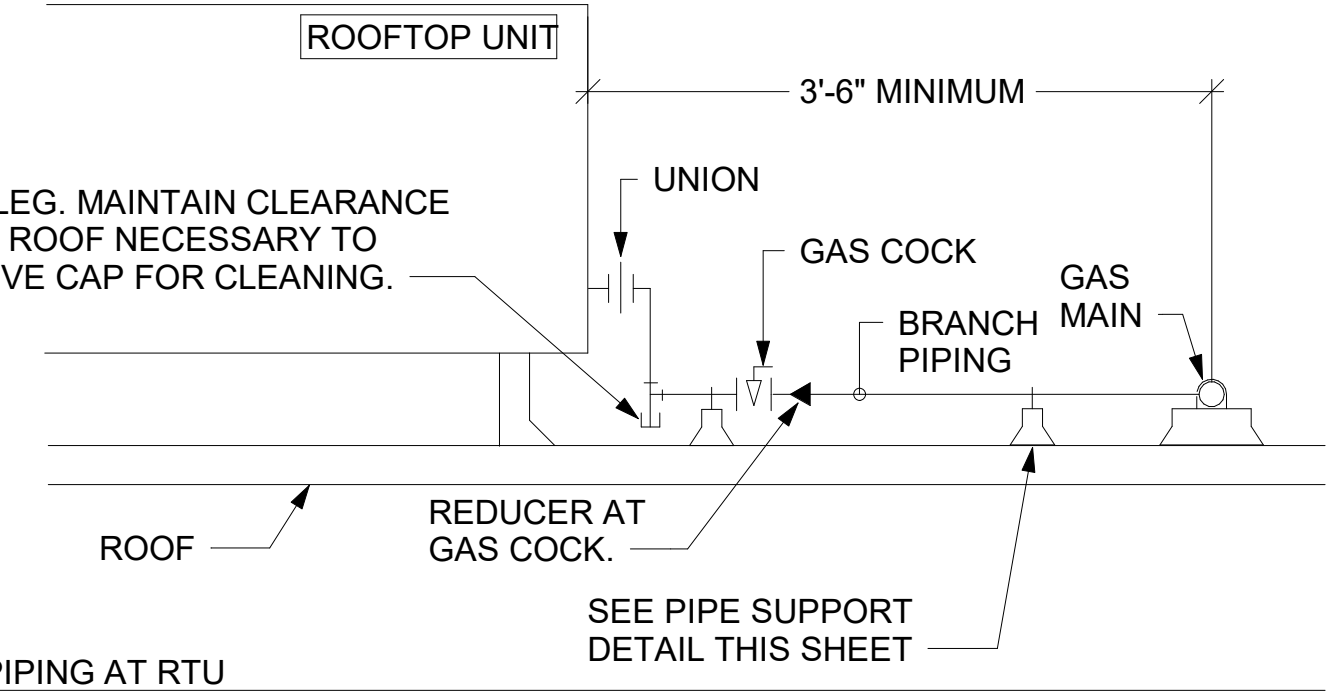
EQUIPMENT	GAS LOAD
AC#1	480,000 BTUS
AC#2	360,000 BTUS
AC#3	480,000 BTUS
GIH (7 @ 50,000 BTU EA.)	350,000 BTUS
WATER HEATER	125,000 BTUS
TOTAL CONNECTED LOAD	1,795,000 BTUS

REMARKS:
 1) EQUIVALENT TO 1,795.0 CFH
 2) 7" W.C. DELIVERY PRESSURE
 3) DEVELOPED LENGTH: 175 FT (METER TO AC#3)

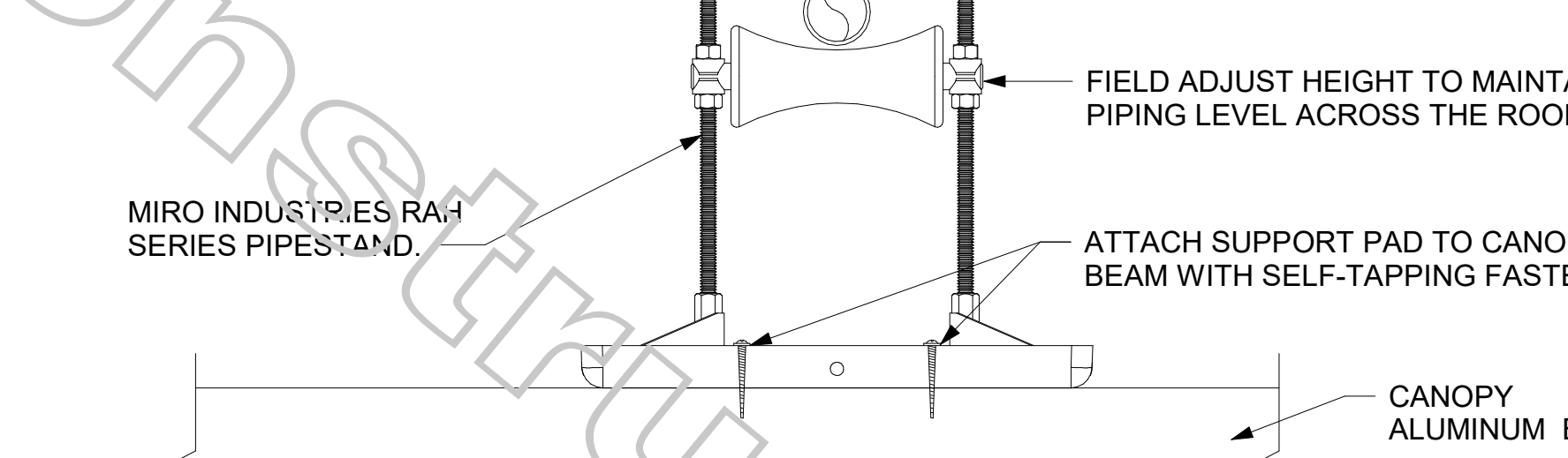
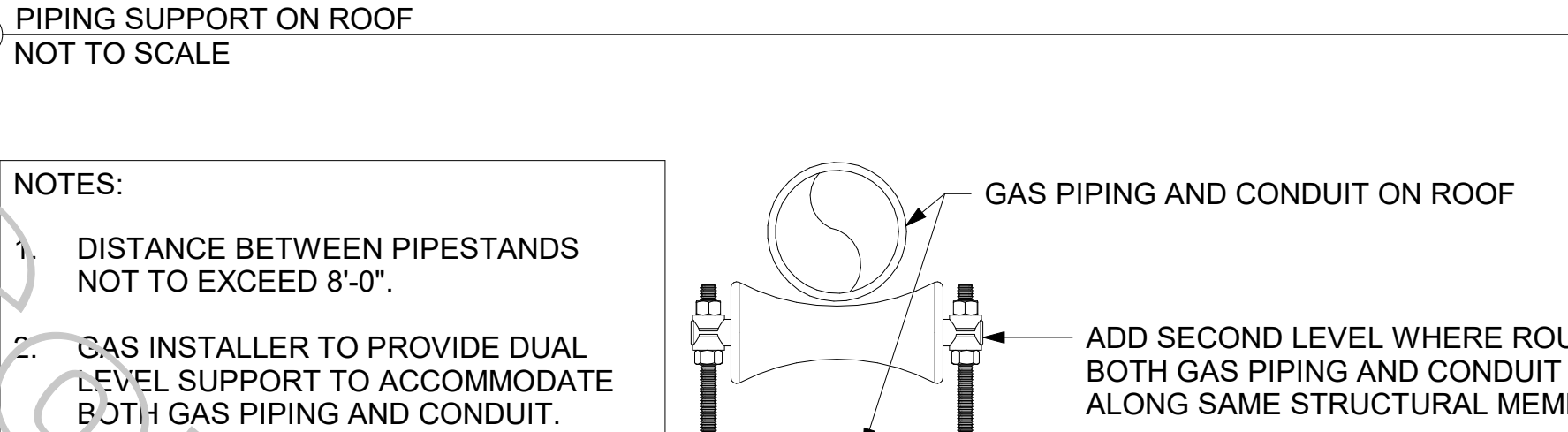
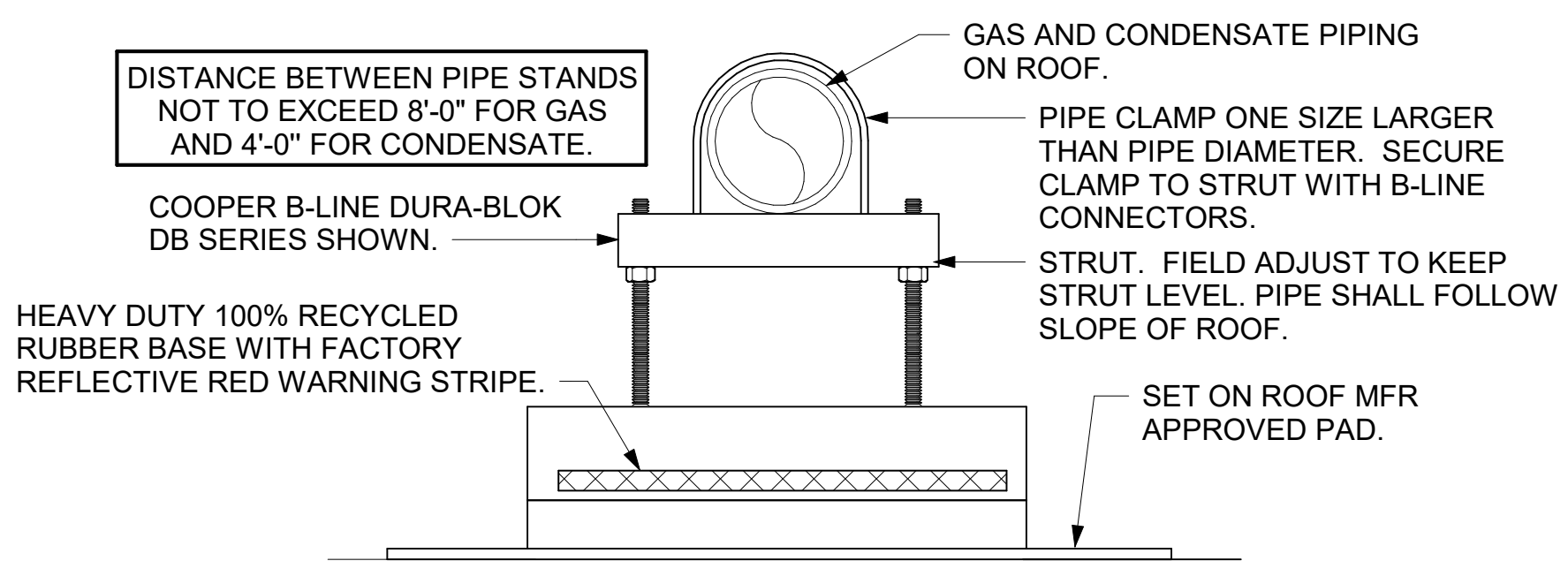


- CANOPY GENERAL NOTES**
- COORDINATE NEW WORK WITH EXISTING CONDUIT, STRUCTURE, AND PIPING. FIELD VERIFY EXISTING CONDITIONS PRIOR TO START OF WORK.
 - COORDINATE LOCATION AND RESPONSIBILITIES FOR UNDERGROUND PIPING AND ASSOCIATED TRENCHING WITH GENERAL CONTRACTOR PRIOR TO START OF WORK.
 - EXPOSED GAS PIPING SHALL BE PAINTED BY GENERAL CONTRACTOR.
 - ACTUAL NUMBER OF GAS INFRARED HEATERS WILL BE DETERMINED BY SITE-SPECIFIC CANOPY LAYOUT AND EQUIPMENT LOCATIONS, AS INDICATED ON ARCHITECTURAL PLANS.

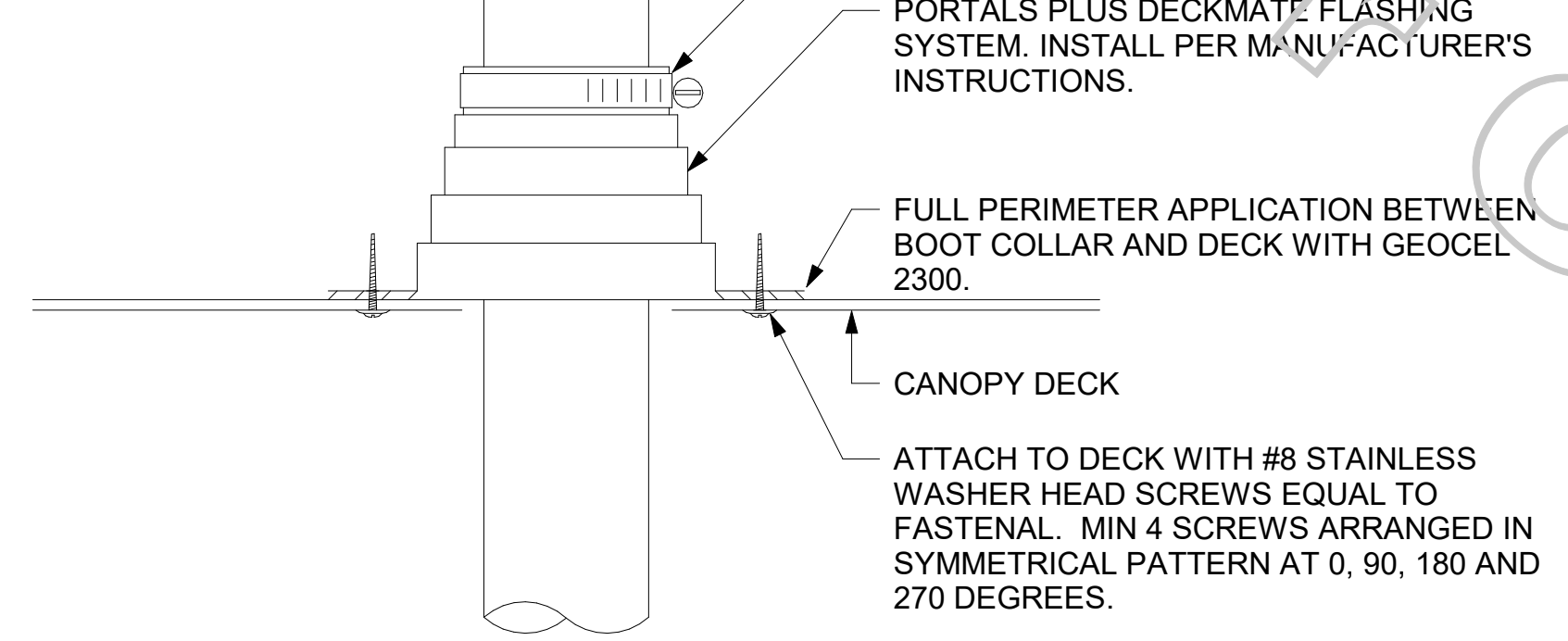
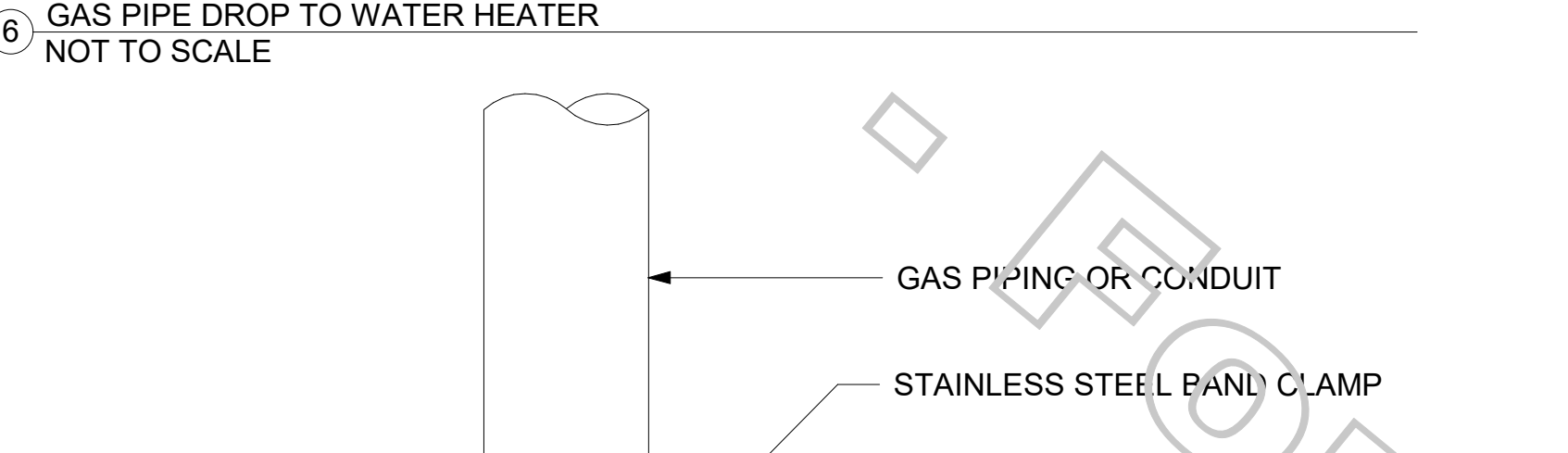
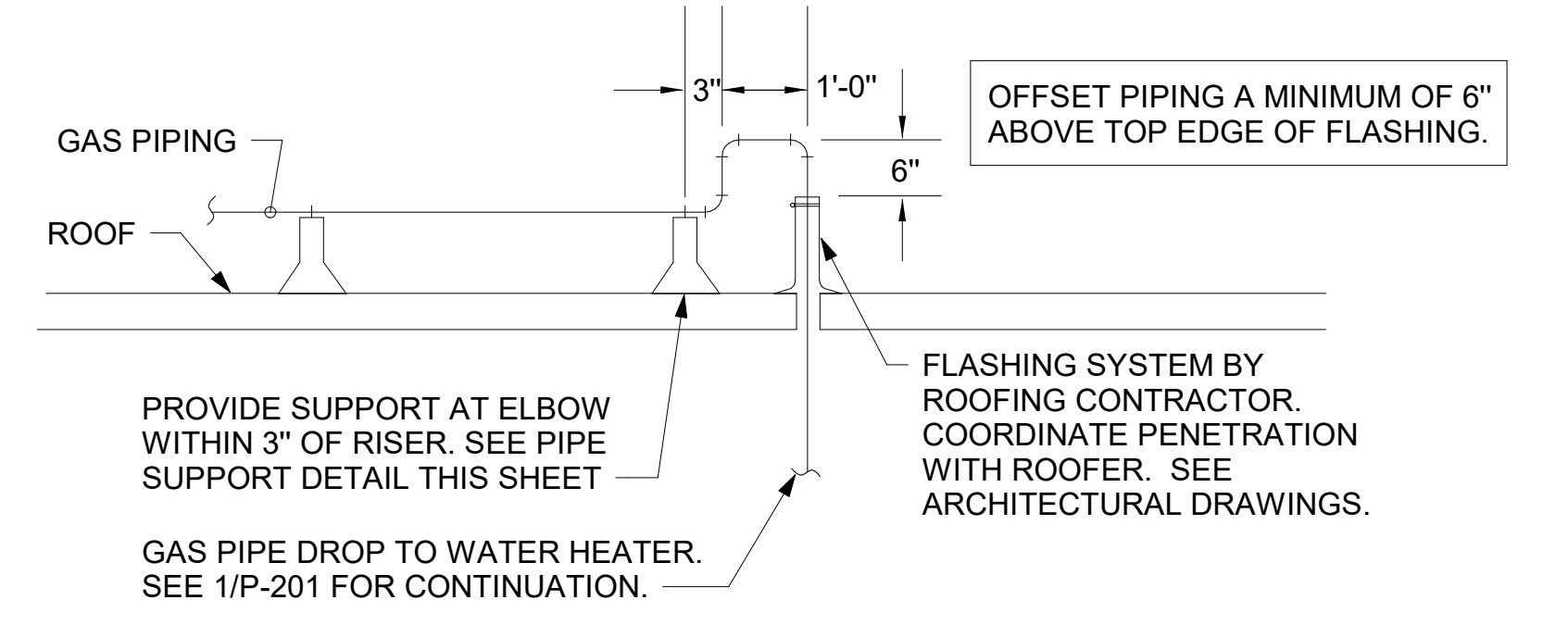
- NOTES:**
- INSTALL GAS PIPING SUCH THAT HVAC EQUIPMENT ACCESS PANELS AND/OR DOORS ARE IN NO WAY OBSTRUCTED BY PIPING, VALVES, OR SUPPORTS.
 - TO AVOID CONFLICT WITH AC UNIT ACCESS DORRS, INSTALL GAS PIPING NO CLOSER THAN 3'-6" FROM AC UNIT. (EXCEPT FOR BRANCH LINE CONNECTED TO AC UNIT.)
 - ROUTE BRANCH TAKE-OFF DIRECTLY FROM MAIN TO ROOFTOP UNIT AS SHOWN ON PLAN AND DETAILS WITHOUT LATERAL OFFSETS WHICH MAY OBSTRUCT UNIT ACCESS DOORS.



- NOTES:**
- NON ADJUSTABLE MODEL DB610 PIPE STAND TO BE USED FOR NON-ELEVATED PIPING INSTALLED FLAT ON ROOF DECK.
 - PROVIDE MODEL DBE 10-8 OR DBE 10-12 OR DBE 10-16 AS NEEDED FOR ELEVATING CONDENSATE PIPING TO MAINTAIN PROPER SLOPE AND FOR GAS PIPING CROSSING OVER CONDENSATE PIPING.
 - ENSURE GAS AND CONDENSATE PIPING DO NOT OBSTRUCT ROOFTOP EQUIPMENT ACCESS OPENINGS. RE-PIPING OF SYSTEMS DUE TO CONFLICTS WITH EQUIPMENT ACCESS OPENINGS SHALL BE DONE AT PLUMBING CONTRACTOR'S EXPENSE.

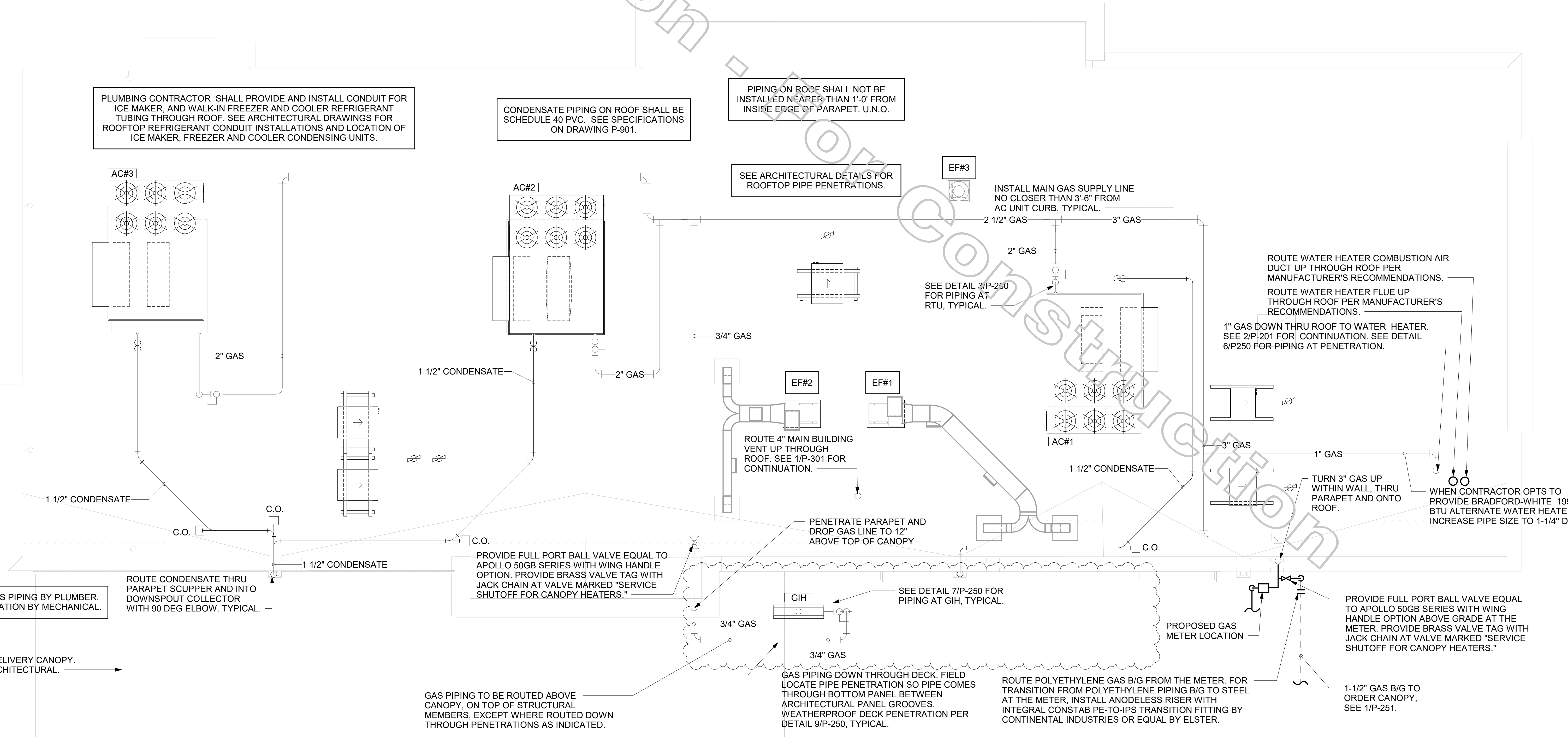


- NOTES:**
- DISTANCE BETWEEN PIPE STANDS NOT TO EXCEED 8'-0".
 - GAS INSTALLER TO PROVIDE DUAL LEVEL SUPPORT TO ACCOMMODATE BOTH GAS PIPING AND CONDUIT.



LEGEND

GIH#1	GAS INFRARED HEATER #1 (TYP.)	B/G	BELOW GRADE
---	NEW GAS PIPING ABOVE GRADE	EC	ELECTRICAL CONTRACTOR
---	NEW GAS PIPING BELOW GRADE	MC	MECHANICAL CONTRACTOR



1. ROOF PIPING PLAN
1/4" = 1'-0"

Chick-fil-A
 5200 Buffington Road
 Atlanta, Georgia
 30349-2998

CHIPMAN DESIGN ARCHITECTURE GROUP P.C.
 119 WEST 23RD ST STE 1003
 NEW YORK, NEW YORK 10011
 TEL : 8 4 7 . 2 9 8 . 6 9 0 0
 I HEREBY CERTIFY THAT THESE PLANS HAVE BEEN PREPARED UNDER MY SUPERVISION AND THAT TO THE BEST OF MY KNOWLEDGE, THEY COMPLY WITH ALL RULES, REGULATIONS AND ORDINANCES OF HUNTINGTON STATION, NY RELATING TO STRUCTURES AND BUILDINGS.

VPH ENGINEERING SERVICES, PC
 AN AFFILIATE OF IMEG CORP
 603 26TH AVENUE
 ROCKY HILL, CT 06151
 860.788.0673
 FAX: 860.788.0667
 PROJECT # : 21002060.00
 New York Design Firm Registration #012279
 REFERENCE SCALE IN WORK

CHICK-FIL-A
 Huntington, NY
 124 East Jericho Turnpike
 Huntington Station, NY 11746

FSR#04577
 BUILDING TYPE / SIZE: P13 LSR ALL
 RELEASE: 21.02

REVISION SCHEDULE

NO.	DATE	DESCRIPTION
1	03/24/21	ISSUE FOR PERMIT
2	04/26/21	ISSUE FOR BID
3	06/25/21	ISSUE FOR CONSTRUCTION

CONSULTANT PROJECT # 19-2117
 PRINTED FOR ISSUE FOR CONSTRUCTION
 DATE 06/25/21
 DRAWN BY JPM
 CHECKED BY JB
 INFORMATION CONTAINED ON THIS DRAWING AND IN ALL DIGITAL FILES PRODUCED FOR ABOVE NAMED PROJECT MAY NOT BE REPRODUCED IN ANY MANNER WITHOUT EXPRESS WRITTEN OR VERBAL CONSENT FROM AUTHORIZED PROJECT REPRESENTATIVES.
 SHEET ROOF PLAN AND DETAILS

6/25/2021 2:04:40 PM BIM 360/ANY 04577 Huntington_Huntington Station_FSR_P13_LSR_LRG_04577_Huntington_PLB.rvt 40-LSR-04577-P-250-ROOF PLAN AND DETAILS