

SECTION 2200 - DOMESTIC PIPING REQUIREMENTS

- PART 1 - GENERAL
A. SECTION INCLUDES
1. Plumbing Piping
2. PIPING PRODUCTS
3. INSTALLATION
4. TESTING
5. MAINTENANCE AND REPAIR

- SECTION 2240 - DOMESTIC WATER PIPING
PART 1 - GENERAL
A. SECTION INCLUDES
1. Performance Requirements
2. Materials
3. PIPING PRODUCTS
4. TESTING
5. MAINTENANCE AND REPAIR

- SECTION 2440 - PLUMBING FIXTURES
PART 1 - GENERAL
A. SECTION INCLUDES
1. Performance Requirements
2. Materials
3. PIPING PRODUCTS
4. TESTING
5. MAINTENANCE AND REPAIR

- SECTION 2200 - DOMESTIC PIPING REQUIREMENTS (continued)
PART 1 - GENERAL
A. SECTION INCLUDES
1. Plumbing Piping
2. PIPING PRODUCTS
3. INSTALLATION
4. TESTING
5. MAINTENANCE AND REPAIR

- SECTION 2240 - DOMESTIC WATER PIPING (continued)
PART 1 - GENERAL
A. SECTION INCLUDES
1. Performance Requirements
2. Materials
3. PIPING PRODUCTS
4. TESTING
5. MAINTENANCE AND REPAIR

- SECTION 2440 - PLUMBING FIXTURES (continued)
PART 1 - GENERAL
A. SECTION INCLUDES
1. Performance Requirements
2. Materials
3. PIPING PRODUCTS
4. TESTING
5. MAINTENANCE AND REPAIR

- SECTION 2200 - DOMESTIC PIPING REQUIREMENTS (continued)
PART 1 - GENERAL
A. SECTION INCLUDES
1. Plumbing Piping
2. PIPING PRODUCTS
3. INSTALLATION
4. TESTING
5. MAINTENANCE AND REPAIR

- SECTION 2240 - DOMESTIC WATER PIPING (continued)
PART 1 - GENERAL
A. SECTION INCLUDES
1. Performance Requirements
2. Materials
3. PIPING PRODUCTS
4. TESTING
5. MAINTENANCE AND REPAIR

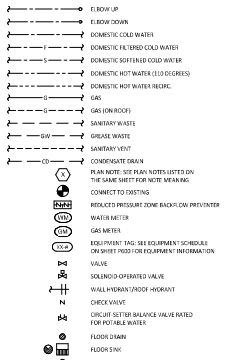
- SECTION 2440 - PLUMBING FIXTURES (continued)
PART 1 - GENERAL
A. SECTION INCLUDES
1. Performance Requirements
2. Materials
3. PIPING PRODUCTS
4. TESTING
5. MAINTENANCE AND REPAIR

- SECTION 2200 - DOMESTIC PIPING REQUIREMENTS (continued)
PART 1 - GENERAL
A. SECTION INCLUDES
1. Plumbing Piping
2. PIPING PRODUCTS
3. INSTALLATION
4. TESTING
5. MAINTENANCE AND REPAIR

- SECTION 2240 - DOMESTIC WATER PIPING (continued)
PART 1 - GENERAL
A. SECTION INCLUDES
1. Performance Requirements
2. Materials
3. PIPING PRODUCTS
4. TESTING
5. MAINTENANCE AND REPAIR

- SECTION 2440 - PLUMBING FIXTURES (continued)
PART 1 - GENERAL
A. SECTION INCLUDES
1. Performance Requirements
2. Materials
3. PIPING PRODUCTS
4. TESTING
5. MAINTENANCE AND REPAIR

PLUMBING SYMBOLS



PLUMBING ABBREVIATIONS

Table with 3 columns: Abbreviation, Description, and Notes. Includes entries like ACZM, GC, GS, H, etc.

PLUMBING GENERAL NOTES

- 1. GENERAL NOTES APPLY TO PLUMBING DETAILS.
2. PLUMBING WORK SHALL BE DONE IN ACCORDANCE WITH THE PLUMBING CODE, LOCAL HEALTH DEPARTMENT STANDARDS, AND THE AUTHORITY HAVING JURISDICTION, SEE ARCHITECTURAL SHEETS FOR THE PRELIMINARY CODES.
3. FINISH CONDITIONS ON DRAINS SHALL BE CONFORMING TO THE EXISTING CONDITIONS AND THE WORK OF OTHER TRADES.
4. GENERAL FINISH CONDITIONS NOTED OTHERWISE: WATER SUPPLY PIPES SHALL BE INSTALLED IN ADDITION TO STOP VALVES AT EACH FLOOR.
5. PROVIDE STOP VALVES AT FLOOR LEVELS.
6. PROVIDE TRAP PIPING AT FLOOR DRAINAGE.
7. INSULATE THE HOT AND COLD WATER, CONDENSATE DRAINAGE, AND STORM PIPING PER THE FINISHING MATERIAL.
8. INSULATE THE HOT AND COLD WATER, CONDENSATE DRAINAGE, AND STORM PIPING PER THE FINISHING MATERIAL.
9. PROVIDE SHUT OFF VALVES FOR ISOLATION ON FUTURE LOCATIONS AS SHOWN ON DRAWINGS IN ADDITION TO STOP VALVES AT EACH FLOOR.
10. INSULATE THE HOT AND COLD WATER, CONDENSATE DRAINAGE, AND STORM PIPING PER THE FINISHING MATERIAL.
11. PROVIDE GAS SHUT OFF VALVES AT EACH FLOOR OF EQUIPMENT PROVIDE ACCESSIBLE SHUT OFF AT THE BOTTOM OF VERTICAL SECTIONS OF GAS PIPE AND THE CONNECTION TO EACH PIECE OF EQUIPMENT.
12. PROVIDE TO FURNISH PERFORM A VIDEO INSPECTION OF THE SANITARY AND GREASE LINES FROM THE MAIN LINES WITHIN THE TYPICAL SPACE TO THE MAIN SEWER DUCTWORK THAT THE SANITARY WASTE SYSTEM IS CORRECTLY CLEAN, AND FREE OF SAGS, BELLETS, BLOCKS, AND OTHER OBSTACLES. A REPORT AND COPY OF THE VIDEO TO THE TYPICAL CONSTRUCTION MANAGER PRIOR TO FURNISHING.
13. THE TYPICAL "SUBMITTAL" MEANS SHALL BE SUBJECT TO THE PROJECT'S DESIGN, INCLUDING, UNLESS OTHERWISE SPECIFIED, INCLUDING, INSTALLATION, AND MAINTENANCE OPERATIONS. THE TYPICAL "MEANS" DESCRIBES THE OPERATIONS AT THE PROJECT SITE INCLUDING THE ACTUAL UNLOADING, UNPACKING, SCHEDULING, ERECTING, PLACING, ANCHORING, APPLYING, WORKING TO DIMENSIONS, FINISHING, CURING, PROTECTING, CLEANING, AND SIMILAR OPERATIONS. THE TYPICAL "MEANS" MEANS TO FINISH AND INSTALL, COMPLETE AND READY FOR THE INTENDED USE.
14. PRIOR TO CONNECTION TO ANY EXISTING SYSTEM OR FROM A NEW SYSTEM TO THE EXISTING SYSTEM DOCUMENTS TO THE TYPICAL CONSTRUCTION MANAGER.
15. PROVIDE SANITARY AND GREASE WASTE PIPES AT A MINIMUM SLOPE OF 1/4" PER FOOT UNLESS NOTED OTHERWISE.
16. INSTALL SANITARY AND ISOLATION VALVES SHOWN TO BE ABOVE CEILING IN ACCESSIBLE LOCATIONS WITHIN 24" OF AN IN-CEILING.
17. PREPARE A RAIN TEST ON THE DOMESTIC WATER SERVICE AT POSSESSION. IF THE STATIC WATER PRESSURE IS OVER 80 PSI, THEN COORDINATE WITH CHIPPOTLE CONSTRUCTION MANAGER TO PROVIDE A PRESSURE REGULATOR (DUALT) (RAIN OR DUAL) PROVIDE RESULT OF THE RAIN TEST TO THE ENGINEER FOR COMMENT ONLY ON ADEQUATE CAPACITY.

PLUMBING MATERIAL SCHEDULE

Table with 3 columns: Category, Application, and Allowable Material. Includes rows for Water Supply Pipe, Natural Gas Pipe, Sanitary Waste & Vent Pipe, and Bldg/Ground.

Advertisement for National and Chipotle Mexican Grill. Includes logos, contact information, and address: 4635 Truman Blvd, Suite 290, Hilliard, Ohio 43026.

PLUMBING SUPPLY PLAN NOTES

- CONNECT TO THE EXISTING 3/4" DOMESTIC WATER SERVICE.
- PROVIDE 1/2" FILTERED WATER TO THE BALL IN BOX SODIUM CARBONATE AT 100' AFT. SODIUM CARBONATE SHALL HAVE AN AUTOMATIC BACKFLOW PREVENTER WITH AN AUTOMATIC BACKFLOW PREVENTER ON 3/4" INLET.
- PROVIDE WATER HEATED COLD & HOT 3/4" INCH DETAIL 1/2" PIPING.
- PROVIDE WATER FILTERS MOUNTED TO WALL PER DETAIL 1/2" PIPING. PROVIDE 1/2" SUPPLY PIPING FROM FILTERS TO ICE MAKER AND SODIUM CARBONATE AS SHOWN.
- PROVIDE 1/2" 1/8" THICK WATER ROUGH-IN TO THE ICE MAKER AT 30' AFT. PROVIDE 6" LONG STAINLESS STEEL FLEXIBLE BRACKETED WASHING MACHINE WATER CONNECTION WITH HANGARMAN 4" 1/2" BRACKET TO 1/2" PIPING FOR EQUAL FOR FINAL CONNECTION TO THE MACHINES.
- PROVIDE DOMESTIC WATER ROUGH-IN FOR THE MOP BASH FAUCET AT 30' AFT. PROVIDE DOMESTIC WATER ROUGH-IN FOR THE CHEMICAL DISPENSER FAUCET (HW-1) AT 64' AFT. DIRECTLY ABOVE THE MOP ASSEMBLY. SEE ARCHITECTURAL ELEVATION FOR ADDITIONAL INFORMATION.
- CONNECT TO THE EXISTING GAS LINE.
- PROVIDE GAS CONNECTIONS TO THE COOKING EQUIPMENT PER DETAIL 1/2" PIPING.
- SUPPORT THE GAS PIPE ON THE 1/2" PIPING PER DETAIL 1/2" PIPING. WOOD BLOCKING IS NOT AN ACCEPTABLE METHOD OF SUPPORTING THE GAS LINE.
- PROVIDE ACCURATE LINE SIZES GAS VALVE, SHUT OFF, AND UNION AT GAS CONNECTION TO THE EQUIPMENT.
- REFER TO ARCHITECTURAL DRAWINGS FOR FINISHING OF INTERIOR AND EXTERIOR EXPOSED GAS PIPING.
- PROVIDE DOMESTIC WATER ROUGH-IN FOR THE CHEMICAL DISPENSER FAUCET (HW-1) AT 64' AFT. SEE ARCHITECTURAL ELEVATION FOR ADDITIONAL INFORMATION.
- PROVIDE DOMESTIC WATER ROUGH-IN FOR THE VICTORY WASH DISPENSER FAUCET (HW-2) AT 32' AFT. SEE ARCHITECTURAL ELEVATION FOR ADDITIONAL INFORMATION.
- PROVIDE ROUGH-IN TO RESTROOM AND TOILETS AS SHOWN IN DETAIL 1/2" PIPING.
- PROVIDE KITCHEN EQUIPMENT GAS SHUT OFF 4" BELOW THE CEILING PER DETAIL 1/2" PIPING.
- CONNECT CHEMICAL DISPENSER TO 1/2" S.I. CHEMICAL DISPENSER IN AN INTERNAL AIR SHIP AS SHOWN PER DETAIL 1/2" PIPING.
- PROVIDE SIZE 1/2" (20) PIPING OF USE PER DOMESTIC MOPING VALVE, WHITE FLANGE, OR WATER SUPPLY TO KITCHEN HAND SINK. PROVIDE ANGLE STOP BELOW SINK, FASTEN BENDING PIECE TO WALL AND MAKE FINAL CONNECTION FROM ANGLE STOP TO BENDING VALVE AND FROM BENDING VALVE TO FAUCET USING BRACKETED STAINLESS STEEL HOSE. ADJUST BENDING VALVE TO DISCONNECT FAUCET OF APPROXIMATELY 100'.
- PROVIDE ACCESSIBLE VALVE IN WATER SUPPLY TO FUTURE AS SHOWN.
- PROVIDE GAS CONNECTION TO THE MOP COOKER PER DETAIL 1/2" PIPING.
- PROVIDE GAS ROUGH-IN FOR THE MOP COOKER TABLE SO THAT VALVES AND BENT LEGS ARE ACCESSIBLE ONCE REFER IS SECURED INTO PLACE.
- PROVIDE AN ACCESSIBLE MOPING DOMESTIC WATER SHUT OFF ABOVE LAV IN CEILING AS SHOWN. VALVE SHALL BE 2" ABOVE THE TOP OF THE LAV IN CEILING. PERMANENTLY INSTALL THE WATER SHUT OFF HIGH TO THE CEILING AND BELOW THE FAUCET.
- INSTALL ROUGH MOPING MOPING VALVE PERMITS BY 1/2" PER CHIPOTLE'S INSTALLATION INSTRUCTIONS.
- PROVIDE 1/2" DOMESTIC HOT AND COLD WATER ROUGH-IN FOR THE PREP SINK (HW-2) FAUCET 1/2" AFT. TO ALLOW FOR THE VICTORY WASH CHEMICAL DOCK TO BE INSTALLED DIRECTLY BELOW THE PREP SINK BASK. MAKE FINAL CONNECTION TO PREP SINK FAUCET USING 3/4" STAINLESS STEEL FLEXIBLE BRACKETED WASHING MACHINE WATER CONNECTION HOSE. PROVIDE 1/2" HOT WATER TO THE MOP MACHINE AT 60' AFT ABOVE LEFT SIDE OF MOP MACHINE. MAKE FINAL CONNECTION USING HOSE PERMITS BY 1/2" PER CHIPOTLE'S INSTALLATION INSTRUCTIONS. PROVIDE WATER HANGER ABOVE MOP MACHINE.
- PROVIDE ROOF HANGAR HW-1 WITH BOTTOM OF NOZZLE INSTALLED 24" ABOVE THE BOTTOM OF ROOF DECK. PROVIDE ACCESSIBLE VALVE IN WATER SUPPLY TO ROOF HANGAR. SUPPORT ROOF HANGAR FOR THE MANUFACTURER'S INSTALLATION INSTRUCTIONS.
- PROVIDE FILTERED DOMESTIC WATER ROUGH-IN FOR THE SPEED-ALL FILLER FAUCET (HW-3) AT 64' AFT. SEE ARCHITECTURAL ELEVATION FOR DETAIL.
- PROVIDE 1/2" 1/8" THICK WATER ROUGH-IN TO THE ICE MAKER AT 24' AFT. PROVIDE 6" LONG STAINLESS STEEL FLEXIBLE BRACKETED WASHING MACHINE WATER CONNECTION WITH HANGARMAN 4" 1/2" BRACKET TO 1/2" PIPING FOR EQUAL FOR FINAL CONNECTION TO THE MACHINES.
- INSTALL ROUGH MOPING MOPING VALVE PERMITS BY 1/2" PER CHIPOTLE'S INSTALLATION INSTRUCTIONS. LOCATE ROOF HANGER FROM CENTER IN A LOCATION THAT DOES NOT INTERFERE WITH THE HANGING RIGS BELOW THE STEERING CENTER. PROVIDE ACCESSIBLE TRAP HANGER ABOVE JAK IN CEILING AS SHOWN. INSTALL PER HANGARMAN 4" 1/2" BRACKETED TO 1/2" PIPING WITH A SODIUM CARBONATE AT THE TRAP. PRIMER INLET PROVIDE 1/2" DISTRIBUTION TRIPLES TO FLOOR DRAIN TRAP PRIMER CONNECTIONS AS SHOWN. HYDROLOGICAL DISTRIBUTION TRIPLES SHALL HAVE CONTINUOUS SLOPE TO THE FLOOR DRAINS.
- REDUCE STOCK WATER CLOSET HANGER WITH FINAL SINK OPERATED HANDLE (EQUIVALENT APPROXIMATE APPROXIMATE) - THIS IS NOT COMPATIBLE WITH FLUSHMATE SYSTEM IN WATER CLOSET.

PLUMBING FIXTURE SUPPLY CONNECTIONS

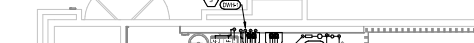
TAG	FIXTURE	CONNECTION SIZES		ROUGH-IN	TYPE	FIXTURE UNITS (EACH)			FIXTURE UNITS (TOTAL)		
		CW	HW			CW	HW	TOTAL	CW	HW	TOTAL
HW-1	1/2" BALL IN BOX PRESSURE REDUCING VALVE OR EQUAL (BRASS) OR 1/2" BALL STOP WITH 3/8" COMPRESSION CONNECTION	1/2"	1/2"	BRICK	1	1	1	1	1	1	1
HW-2	1/2" BALL IN BOX PRESSURE REDUCING VALVE OR EQUAL (BRASS) OR 1/2" BALL STOP WITH 3/8" COMPRESSION CONNECTION	1/2"	1/2"	BRICK	1	1	1	1	1	1	1
HW-3	1/2" BALL IN BOX PRESSURE REDUCING VALVE OR EQUAL (BRASS) OR 1/2" BALL STOP WITH 3/8" COMPRESSION CONNECTION	1/2"	1/2"	BRICK	1	1	1	1	1	1	1
HW-4	1/2" BALL IN BOX PRESSURE REDUCING VALVE OR EQUAL (BRASS) OR 1/2" BALL STOP WITH 3/8" COMPRESSION CONNECTION	1/2"	1/2"	BRICK	1	1	1	1	1	1	1
HW-5	1/2" BALL IN BOX PRESSURE REDUCING VALVE OR EQUAL (BRASS) OR 1/2" BALL STOP WITH 3/8" COMPRESSION CONNECTION	1/2"	1/2"	BRICK	1	1	1	1	1	1	1
HW-6	1/2" BALL IN BOX PRESSURE REDUCING VALVE OR EQUAL (BRASS) OR 1/2" BALL STOP WITH 3/8" COMPRESSION CONNECTION	1/2"	1/2"	BRICK	1	1	1	1	1	1	1
HW-7	1/2" BALL IN BOX PRESSURE REDUCING VALVE OR EQUAL (BRASS) OR 1/2" BALL STOP WITH 3/8" COMPRESSION CONNECTION	1/2"	1/2"	BRICK	1	1	1	1	1	1	1
HW-8	1/2" BALL IN BOX PRESSURE REDUCING VALVE OR EQUAL (BRASS) OR 1/2" BALL STOP WITH 3/8" COMPRESSION CONNECTION	1/2"	1/2"	BRICK	1	1	1	1	1	1	1
HW-9	1/2" BALL IN BOX PRESSURE REDUCING VALVE OR EQUAL (BRASS) OR 1/2" BALL STOP WITH 3/8" COMPRESSION CONNECTION	1/2"	1/2"	BRICK	1	1	1	1	1	1	1
HW-10	1/2" BALL IN BOX PRESSURE REDUCING VALVE OR EQUAL (BRASS) OR 1/2" BALL STOP WITH 3/8" COMPRESSION CONNECTION	1/2"	1/2"	BRICK	1	1	1	1	1	1	1
HW-11	1/2" BALL IN BOX PRESSURE REDUCING VALVE OR EQUAL (BRASS) OR 1/2" BALL STOP WITH 3/8" COMPRESSION CONNECTION	1/2"	1/2"	BRICK	1	1	1	1	1	1	1
HW-12	1/2" BALL IN BOX PRESSURE REDUCING VALVE OR EQUAL (BRASS) OR 1/2" BALL STOP WITH 3/8" COMPRESSION CONNECTION	1/2"	1/2"	BRICK	1	1	1	1	1	1	1
HW-13	1/2" BALL IN BOX PRESSURE REDUCING VALVE OR EQUAL (BRASS) OR 1/2" BALL STOP WITH 3/8" COMPRESSION CONNECTION	1/2"	1/2"	BRICK	1	1	1	1	1	1	1
HW-14	1/2" BALL IN BOX PRESSURE REDUCING VALVE OR EQUAL (BRASS) OR 1/2" BALL STOP WITH 3/8" COMPRESSION CONNECTION	1/2"	1/2"	BRICK	1	1	1	1	1	1	1
HW-15	1/2" BALL IN BOX PRESSURE REDUCING VALVE OR EQUAL (BRASS) OR 1/2" BALL STOP WITH 3/8" COMPRESSION CONNECTION	1/2"	1/2"	BRICK	1	1	1	1	1	1	1
HW-16	1/2" BALL IN BOX PRESSURE REDUCING VALVE OR EQUAL (BRASS) OR 1/2" BALL STOP WITH 3/8" COMPRESSION CONNECTION	1/2"	1/2"	BRICK	1	1	1	1	1	1	1
HW-17	1/2" BALL IN BOX PRESSURE REDUCING VALVE OR EQUAL (BRASS) OR 1/2" BALL STOP WITH 3/8" COMPRESSION CONNECTION	1/2"	1/2"	BRICK	1	1	1	1	1	1	1
HW-18	1/2" BALL IN BOX PRESSURE REDUCING VALVE OR EQUAL (BRASS) OR 1/2" BALL STOP WITH 3/8" COMPRESSION CONNECTION	1/2"	1/2"	BRICK	1	1	1	1	1	1	1
HW-19	1/2" BALL IN BOX PRESSURE REDUCING VALVE OR EQUAL (BRASS) OR 1/2" BALL STOP WITH 3/8" COMPRESSION CONNECTION	1/2"	1/2"	BRICK	1	1	1	1	1	1	1
HW-20	1/2" BALL IN BOX PRESSURE REDUCING VALVE OR EQUAL (BRASS) OR 1/2" BALL STOP WITH 3/8" COMPRESSION CONNECTION	1/2"	1/2"	BRICK	1	1	1	1	1	1	1
HW-21	1/2" BALL IN BOX PRESSURE REDUCING VALVE OR EQUAL (BRASS) OR 1/2" BALL STOP WITH 3/8" COMPRESSION CONNECTION	1/2"	1/2"	BRICK	1	1	1	1	1	1	1
HW-22	1/2" BALL IN BOX PRESSURE REDUCING VALVE OR EQUAL (BRASS) OR 1/2" BALL STOP WITH 3/8" COMPRESSION CONNECTION	1/2"	1/2"	BRICK	1	1	1	1	1	1	1
HW-23	1/2" BALL IN BOX PRESSURE REDUCING VALVE OR EQUAL (BRASS) OR 1/2" BALL STOP WITH 3/8" COMPRESSION CONNECTION	1/2"	1/2"	BRICK	1	1	1	1	1	1	1
HW-24	1/2" BALL IN BOX PRESSURE REDUCING VALVE OR EQUAL (BRASS) OR 1/2" BALL STOP WITH 3/8" COMPRESSION CONNECTION	1/2"	1/2"	BRICK	1	1	1	1	1	1	1
HW-25	1/2" BALL IN BOX PRESSURE REDUCING VALVE OR EQUAL (BRASS) OR 1/2" BALL STOP WITH 3/8" COMPRESSION CONNECTION	1/2"	1/2"	BRICK	1	1	1	1	1	1	1
HW-26	1/2" BALL IN BOX PRESSURE REDUCING VALVE OR EQUAL (BRASS) OR 1/2" BALL STOP WITH 3/8" COMPRESSION CONNECTION	1/2"	1/2"	BRICK	1	1	1	1	1	1	1
HW-27	1/2" BALL IN BOX PRESSURE REDUCING VALVE OR EQUAL (BRASS) OR 1/2" BALL STOP WITH 3/8" COMPRESSION CONNECTION	1/2"	1/2"	BRICK	1	1	1	1	1	1	1
HW-28	1/2" BALL IN BOX PRESSURE REDUCING VALVE OR EQUAL (BRASS) OR 1/2" BALL STOP WITH 3/8" COMPRESSION CONNECTION	1/2"	1/2"	BRICK	1	1	1	1	1	1	1
HW-29	1/2" BALL IN BOX PRESSURE REDUCING VALVE OR EQUAL (BRASS) OR 1/2" BALL STOP WITH 3/8" COMPRESSION CONNECTION	1/2"	1/2"	BRICK	1	1	1	1	1	1	1
HW-30	1/2" BALL IN BOX PRESSURE REDUCING VALVE OR EQUAL (BRASS) OR 1/2" BALL STOP WITH 3/8" COMPRESSION CONNECTION	1/2"	1/2"	BRICK	1	1	1	1	1	1	1
HW-31	1/2" BALL IN BOX PRESSURE REDUCING VALVE OR EQUAL (BRASS) OR 1/2" BALL STOP WITH 3/8" COMPRESSION CONNECTION	1/2"	1/2"	BRICK	1	1	1	1	1	1	1
HW-32	1/2" BALL IN BOX PRESSURE REDUCING VALVE OR EQUAL (BRASS) OR 1/2" BALL STOP WITH 3/8" COMPRESSION CONNECTION	1/2"	1/2"	BRICK	1	1	1	1	1	1	1
HW-33	1/2" BALL IN BOX PRESSURE REDUCING VALVE OR EQUAL (BRASS) OR 1/2" BALL STOP WITH 3/8" COMPRESSION CONNECTION	1/2"	1/2"	BRICK	1	1	1	1	1	1	1
HW-34	1/2" BALL IN BOX PRESSURE REDUCING VALVE OR EQUAL (BRASS) OR 1/2" BALL STOP WITH 3/8" COMPRESSION CONNECTION	1/2"	1/2"	BRICK	1	1	1	1	1	1	1
HW-35	1/2" BALL IN BOX PRESSURE REDUCING VALVE OR EQUAL (BRASS) OR 1/2" BALL STOP WITH 3/8" COMPRESSION CONNECTION	1/2"	1/2"	BRICK	1	1	1	1	1	1	1
HW-36	1/2" BALL IN BOX PRESSURE REDUCING VALVE OR EQUAL (BRASS) OR 1/2" BALL STOP WITH 3/8" COMPRESSION CONNECTION	1/2"	1/2"	BRICK	1	1	1	1	1	1	1
HW-37	1/2" BALL IN BOX PRESSURE REDUCING VALVE OR EQUAL (BRASS) OR 1/2" BALL STOP WITH 3/8" COMPRESSION CONNECTION	1/2"	1/2"	BRICK	1	1	1	1	1	1	1
HW-38	1/2" BALL IN BOX PRESSURE REDUCING VALVE OR EQUAL (BRASS) OR 1/2" BALL STOP WITH 3/8" COMPRESSION CONNECTION	1/2"	1/2"	BRICK	1	1	1	1	1	1	1
HW-39	1/2" BALL IN BOX PRESSURE REDUCING VALVE OR EQUAL (BRASS) OR 1/2" BALL STOP WITH 3/8" COMPRESSION CONNECTION	1/2"	1/2"	BRICK	1	1	1	1	1	1	1
HW-40	1/2" BALL IN BOX PRESSURE REDUCING VALVE OR EQUAL (BRASS) OR 1/2" BALL STOP WITH 3/8" COMPRESSION CONNECTION	1/2"	1/2"	BRICK	1	1	1	1	1	1	1
HW-41	1/2" BALL IN BOX PRESSURE REDUCING VALVE OR EQUAL (BRASS) OR 1/2" BALL STOP WITH 3/8" COMPRESSION CONNECTION	1/2"	1/2"	BRICK	1	1	1	1	1	1	1
HW-42	1/2" BALL IN BOX PRESSURE REDUCING VALVE OR EQUAL (BRASS) OR 1/2" BALL STOP WITH 3/8" COMPRESSION CONNECTION	1/2"	1/2"	BRICK	1	1	1	1	1	1	1
HW-43	1/2" BALL IN BOX PRESSURE REDUCING VALVE OR EQUAL (BRASS) OR 1/2" BALL STOP WITH 3/8" COMPRESSION CONNECTION	1/2"	1/2"	BRICK	1	1	1	1	1	1	1
HW-44	1/2" BALL IN BOX PRESSURE REDUCING VALVE OR EQUAL (BRASS) OR 1/2" BALL STOP WITH 3/8" COMPRESSION CONNECTION	1/2"	1/2"	BRICK	1	1	1	1	1	1	1
HW-45	1/2" BALL IN BOX PRESSURE REDUCING VALVE OR EQUAL (BRASS) OR 1/2" BALL STOP WITH 3/8" COMPRESSION CONNECTION	1/2"	1/2"	BRICK	1	1	1	1	1	1	1
HW-46	1/2" BALL IN BOX PRESSURE REDUCING VALVE OR EQUAL (BRASS) OR 1/2" BALL STOP WITH 3/8" COMPRESSION CONNECTION	1/2"	1/2"	BRICK	1	1	1	1	1	1	1
HW-47	1/2" BALL IN BOX PRESSURE REDUCING VALVE OR EQUAL (BRASS) OR 1/2" BALL STOP WITH 3/8" COMPRESSION CONNECTION	1/2"	1/2"	BRICK	1	1	1	1	1	1	1
HW-48	1/2" BALL IN BOX PRESSURE REDUCING VALVE OR EQUAL (BRASS) OR 1/2" BALL STOP WITH 3/8" COMPRESSION CONNECTION	1/2"	1/2"	BRICK	1	1	1	1	1	1	1
HW-49	1/2" BALL IN BOX PRESSURE REDUCING VALVE OR EQUAL (BRASS) OR 1/2" BALL STOP WITH 3/8" COMPRESSION CONNECTION	1/2"	1/2"	BRICK	1	1	1	1	1	1	1
HW-50	1/2" BALL IN BOX PRESSURE REDUCING VALVE OR EQUAL (BRASS) OR 1/2" BALL STOP WITH 3/8" COMPRESSION CONNECTION	1/2"	1/2"	BRICK	1	1	1	1	1	1	1

CONNECTED GAS LOAD

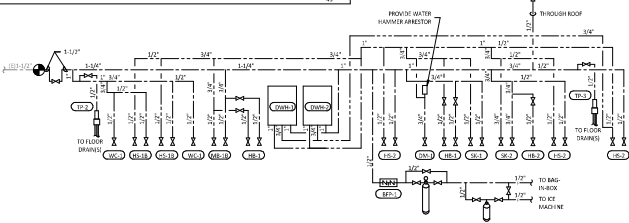
FIXTURE	TAG	MBH	EQUIVALENT LENGTH FROM METER [FT]
WATER HEATER	HW-1	199	70
WATER HEATER	HW-2	199	20
GAS FRYER	FR-1	80	130
WASHER	WS-1	100	130
WASHER DRYER UNIT	WDU-1	225	130
MOP COOKER	MC-1	131	130
KITCHEN ROOFTOP UNIT	RTU-1	232	130
DINING ROOFTOP UNIT	RTU-2	250	95
CONDENSERS		1545	MAX 125

1. PRESSURE REGULATOR AFTER METER 7" W.C.
2. GAS VALVES ARE APPROXIMATE

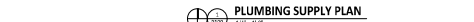
GAS DISTRIBUTION DIAGRAM



PLUMBING SUPPLY DIAGRAM



PLUMBING SUPPLY PLAN



NATIONAL
 4635 Trammell Blvd, Suite 290
 Hilliard, Ohio 43026
 Phone: (614) 751-6610
 Fax: (614) 552-6340
 Contact: DENNIS ALT
 (614) 595-9599
 DALT@nationalengineering.com

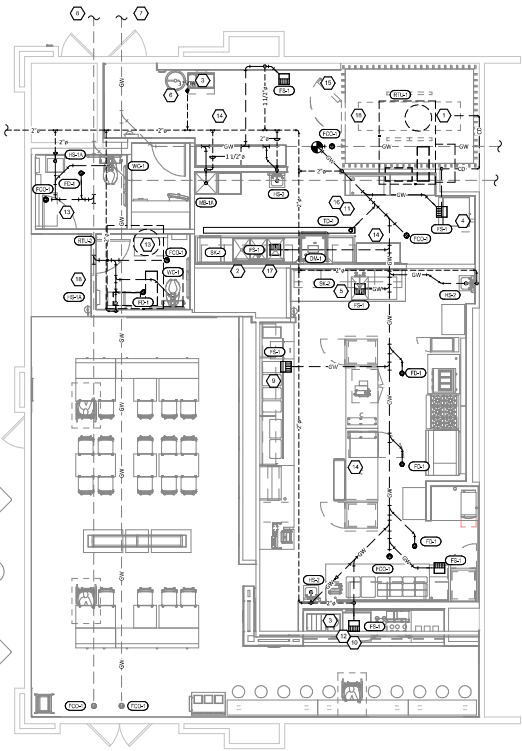
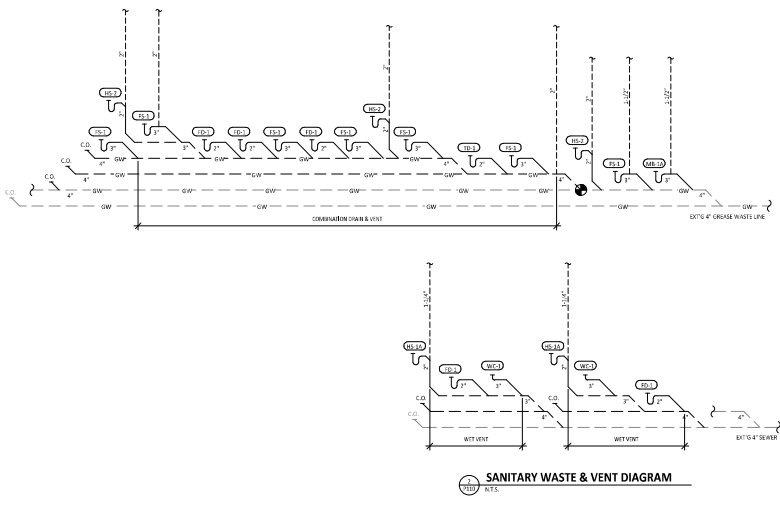
CHIPOTLE MEXICAN GRILL
 STORE NO. 5421
 MALLARD CREEK
 W MALLARD CREEK CHURCH RD AND
 SENATOR ROYALL DR, CHARLOTTE, NC
 28262


PLUMBING PLAN WATER & GAS

P100



PLUMBING WASTE AND VENT PLAN NOTES


1. PROVIDE 1/4" CONCRETE DRAIN FROM THE WALK-IN COOLER EVAPORATOR TO THE FLOOR SINK BELOW THE ICE MAKER AS SHOWN. SLOPE CONDENSATE DRAIN A MINIMUM OF 1" PER FOOT. HOLD EXPOSED CONDENSATE DRAIN IN WALK-IN COOLER AS HIGH AS POSSIBLE. CONCEAL DRAIN PIPING WITHIN INSULATED WALLS AS SHOWN. DISCHARGE THROUGH AN AIR GAP. MAKE FINAL CONNECTION TO EVAPORATOR INSIDE WALK-IN COOLER USING A UNION. CONDENSATE DRAIN SHOULD PENETRATE WALL BEHIND ICE MAKER 1/4" AND BE SECURED TO FLOOR UNDER ICE MAKER.
2. PROVIDE DRAIN CONNECTIONS TO THE THREE COMPARTMENT SINK PER DETAIL 3P700.
3. COORDINATE ROUTING OF SODA BUNDLES WITH LOCAL COLA TRENCH FROM BIG IN BOX AREA TO EACH SODA DISPENSER. OTHER THAN WITHIN THE WALLS DRAIN TO THE BOTTOM OF THE SODA BUNDLES SHALL BE ROUTED OVERHEAD WITHOUT CONDUIT. COORDINATE SUPPORT AND ROUTING OF THE SODA LINE BUNDLES WITH LOCAL COLA TRENCH FOUR INCHES ABOVE SINK AND PROVIDE NECESSARY SUPPORTS. SEE ARCHITECTURAL DRAWINGS FOR SODA BUNDLE TERMINATION LOCATION AND PROVIDE TRIM CAP ON PER DETAIL 3P700.
4. PROVIDE PVC DRAIN PIPES FROM THE ICE MACHINE TO THE FLOOR SINK PER THE MANUFACTURER'S INSTALLATION INSTRUCTIONS. PROVIDE A CLOSE APPROXIMATE AIR GAP AT THE DISCHARGE TO THE FLOOR SINK. SECURE ICE MAKER DRAIN PIPES TO THE BOTTOM OF THE ICE MAKER.
5. PROVIDE DRAIN LINES FROM THE FOOD PREP SINK TO THE FLOOR SINK. PROVIDE AN AIR GAP AT THE DISCHARGE TO THE FLOOR SINK.
6. PROVIDE 2" VENT THROUGH THE ROOF PER DETAIL 3P700.
7. CONNECT TO EXISTING 4" GREASE WASTE LINE LEADING TO EXISTING 1000 GALLON INTERCEPTOR.
8. CONNECT TO EXISTING 4" SANITARY SEWER.
9. PROVIDE 1/2" VALVE DRAIN FROM HOT FOOD TABLE TO THE FLOOR SINK DRAIN THROUGH AN AIR GAP.
10. PROVIDE INSULATED COPPER DRAIN LINES FROM THE TEA TRAY DRAIN AND THE SODA MACHINE DRAIN TO THE FLOOR SINK. DRAIN THROUGH AN AIR GAP. HOLD TEA TRAY DRAIN AS HIGH AS POSSIBLE AND SECURE TO STRUCTURE BELOW THE STENCIL COUNTER.
11. TRIM FRENCH DRAIN ENDS PER THE MANUFACTURER'S INSTALLATION INSTRUCTIONS PRIOR TO INSTALLATION OF THIS GRATE EYE WITHOUT GAFF. INSTALL TRENCH DRAIN WITH SLIGHT POSITIVE SLOPE TOWARD THE DRAIN CONNECTION TO AVOID STANDING WATER IN TRENCH DRAIN.
12. PROVIDE 1/2" PVC DRAIN PIPES FROM THE ICE MACHINE TO THE FLOOR SINK PER THE MANUFACTURER'S INSTALLATION INSTRUCTIONS. PROVIDE A CLOSE APPROXIMATE AIR GAP AT THE DISCHARGE TO THE FLOOR SINK.
13. DO NOT PROVIDE WALL CLEANOUTS ON TILE OR PUBLICLY VISIBLE WALLS. IF A WALL CLEANOUT IS REQUIRED ON THESE SURFACE COORDINATE THE EXACT LOCATION WITH CHIPTOLE'S CONSTRUCTION MANAGER.
14. PROVIDE INDIRECT WASTE AND CONDENSATE DRAINS FROM FIXTURES OTHER THAN KITCHEN SINKS. CONDENSATE IN THE WALL AS SHOWN IN DETAIL 3P700.
15. PROVIDE DRAIN FROM WATER FIXTURE TO FLOOR DRAIN CONCEALED IN THE WALL AS SHOWN IN DETAIL 3P700.
16. PROVIDE TRENCH DRAIN AS SHOWN IN DETAIL 15L7000.
17. INSTALL DRAIN HOSE TERMINATED WITH DISH MACHINE FROM DISH MACHINE OUTLET TO FLOOR SINK. HOLD DRAIN HOSE TIGHT TO WALL AND SECURE TO FLOOR SINK DRAIN TO MAINTAIN AN AIR GAP AT THE FLOOR SINK.
18. PROVIDE CONCRETE TRAY ON RTU PER DETAIL 13P700.





NATIONAL
4030 Treuman Blvd, Suite 250
Hilliard, Ohio 43026
Phone: (614) 751-6610
Fax: (614) 552-6240
Contact: DENNIS ALT
(614) 595-9599
DALT@nationalengineering.com



CHIPTOLE'S RESTAURANT, INC.
400 BAY CENTER
CORPORATE OFFICE 2025
INDIANAPOLIS, IN 46204-1000
CONTACT: 317.555.1000
WWW.CHIPTOLE.COM

STORE NO.: 5421
MALLARD CREEK
W. MALLARD CREEK CHURCH RD AND
SENATOR ROYALL DR. CHARLOTTE, NC
28262

DATE:	08/08/2018
PROJECT:	CHIPTOLE'S
CLIENT:	CHIPTOLE'S
DESIGNER:	DENNIS ALT
CHECKER:	DENNIS ALT
DATE:	08/08/2018

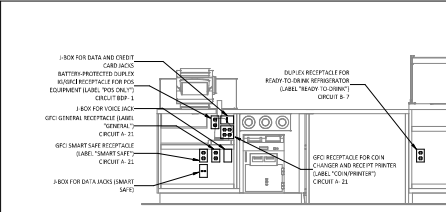
CHIPTOLE'S
**PLUMBING PLAN
WASTE & VENT**

P110

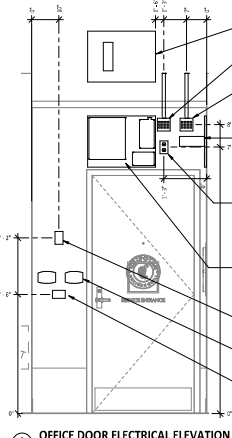
Panel Name: BCP	Volts: 120	Main: LUGS
Mounting: Recessed	Phase: 1	Amperage: 20A
Enclosure: Type 1	Wires: 2	

LT	Circuit Breaker	Typ	Size	Watt
1	20A	120V	1	2400
2	20A	120V	1	2400
3	20A	120V	1	2400
4	20A	120V	1	2400
5	20A	120V	1	2400
6	20A	120V	1	2400
7	20A	120V	1	2400
8	20A	120V	1	2400
9	20A	120V	1	2400
10	20A	120V	1	2400
11	20A	120V	1	2400
12	20A	120V	1	2400
13	20A	120V	1	2400
14	20A	120V	1	2400
15	20A	120V	1	2400
16	20A	120V	1	2400
17	20A	120V	1	2400
18	20A	120V	1	2400
19	20A	120V	1	2400
20	20A	120V	1	2400
21	20A	120V	1	2400
22	20A	120V	1	2400
23	20A	120V	1	2400
24	20A	120V	1	2400
25	20A	120V	1	2400
26	20A	120V	1	2400
27	20A	120V	1	2400
28	20A	120V	1	2400
29	20A	120V	1	2400
30	20A	120V	1	2400
31	20A	120V	1	2400
32	20A	120V	1	2400
33	20A	120V	1	2400
34	20A	120V	1	2400
35	20A	120V	1	2400
36	20A	120V	1	2400
37	20A	120V	1	2400
38	20A	120V	1	2400
39	20A	120V	1	2400
40	20A	120V	1	2400
41	20A	120V	1	2400
42	20A	120V	1	2400
43	20A	120V	1	2400
44	20A	120V	1	2400
45	20A	120V	1	2400
46	20A	120V	1	2400
47	20A	120V	1	2400
48	20A	120V	1	2400
49	20A	120V	1	2400
50	20A	120V	1	2400
51	20A	120V	1	2400
52	20A	120V	1	2400
53	20A	120V	1	2400
54	20A	120V	1	2400
55	20A	120V	1	2400
56	20A	120V	1	2400
57	20A	120V	1	2400
58	20A	120V	1	2400
59	20A	120V	1	2400
60	20A	120V	1	2400
61	20A	120V	1	2400
62	20A	120V	1	2400
63	20A	120V	1	2400
64	20A	120V	1	2400
65	20A	120V	1	2400
66	20A	120V	1	2400
67	20A	120V	1	2400
68	20A	120V	1	2400
69	20A	120V	1	2400
70	20A	120V	1	2400
71	20A	120V	1	2400
72	20A	120V	1	2400
73	20A	120V	1	2400
74	20A	120V	1	2400
75	20A	120V	1	2400
76	20A	120V	1	2400
77	20A	120V	1	2400
78	20A	120V	1	2400
79	20A	120V	1	2400
80	20A	120V	1	2400
81	20A	120V	1	2400
82	20A	120V	1	2400
83	20A	120V	1	2400
84	20A	120V	1	2400
85	20A	120V	1	2400
86	20A	120V	1	2400
87	20A	120V	1	2400
88	20A	120V	1	2400
89	20A	120V	1	2400
90	20A	120V	1	2400
91	20A	120V	1	2400
92	20A	120V	1	2400
93	20A	120V	1	2400
94	20A	120V	1	2400
95	20A	120V	1	2400
96	20A	120V	1	2400
97	20A	120V	1	2400
98	20A	120V	1	2400
99	20A	120V	1	2400
100	20A	120V	1	2400

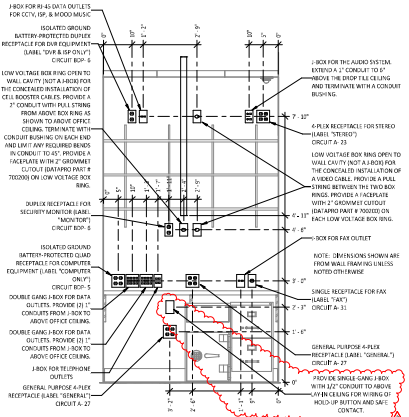
VOLT: 208/120V Wye												
PANEL: 3						PANEL: A						
WIRING: 3						WIRING: 4						
ENCLOSURE: Type 1						ENCLOSURE: Type 1						
OUT	DESCRIPTION	LN	LN #	LOAD	LOAD	LOAD	LOAD	LOAD	LOAD	LOAD	LOAD	LOAD
NO.				WATT	VA	VA	VA	VA	VA	VA	VA	VA
1	RECESSED SWITCH	1	1	2400	2400							
2	RECESSED SWITCH	1	1	2400	2400							
3	RECESSED SWITCH	1	1	2400	2400							
4	RECESSED SWITCH	1	1	2400	2400							
5	RECESSED SWITCH	1	1	2400	2400							
6	RECESSED SWITCH	1	1	2400	2400							
7	RECESSED SWITCH	1	1	2400	2400							
8	RECESSED SWITCH	1	1	2400	2400							
9	RECESSED SWITCH	1	1	2400	2400							
10	RECESSED SWITCH	1	1	2400	2400							
11	RECESSED SWITCH	1	1	2400	2400							
12	RECESSED SWITCH	1	1	2400	2400							
13	RECESSED SWITCH	1	1	2400	2400							
14	RECESSED SWITCH	1	1	2400	2400							
15	RECESSED SWITCH	1	1	2400	2400							
16	RECESSED SWITCH	1	1	2400	2400							
17	RECESSED SWITCH	1	1	2400	2400							
18	RECESSED SWITCH	1	1	2400	2400							
19	RECESSED SWITCH	1	1	2400	2400							
20	RECESSED SWITCH	1	1	2400	2400							
21	RECESSED SWITCH	1	1	2400	2400							
22	RECESSED SWITCH	1	1	2400	2400							
23	RECESSED SWITCH	1	1	2400	2400							
24	RECESSED SWITCH	1	1	2400	2400							
25	RECESSED SWITCH	1	1	2400	2400							
26	RECESSED SWITCH	1	1	2400	2400							
27	RECESSED SWITCH	1	1	2400	2400							
28	RECESSED SWITCH	1	1	2400	2400							
29	RECESSED SWITCH	1	1	2400	2400							
30	RECESSED SWITCH	1	1	2400	2400							
31	RECESSED SWITCH	1	1	2400	2400							
32	RECESSED SWITCH	1	1	2400	2400							
33	RECESSED SWITCH	1	1	2400	2400							
34	RECESSED SWITCH	1	1	2400	2400							
35	RECESSED SWITCH	1	1	2400	2400							
36	RECESSED SWITCH	1	1	2400	2400							
37	RECESSED SWITCH	1	1	2400	2400							
38	RECESSED SWITCH	1	1	2400	2400							
39	RECESSED SWITCH	1	1	2400	2400							
40	RECESSED SWITCH	1	1	2400	2400							
41	RECESSED SWITCH	1	1	2400	2400							
42	RECESSED SWITCH	1	1	2400	2400							
43	RECESSED SWITCH	1	1	2400	2400							
44	RECESSED SWITCH	1	1	2400	2400							
45	RECESSED SWITCH	1	1	2400	2400							
46	RECESSED SWITCH	1	1	2400	2400							
47	RECESSED SWITCH	1	1	2400	2400							
48	RECESSED SWITCH	1	1	2400	2400							
49	RECESSED SWITCH	1	1	2400	2400							
50	RECESSED SWITCH	1	1	2400	2400							
51	RECESSED SWITCH	1	1	2400	2400							
52	RECESSED SWITCH	1	1	2400	2400							
53	RECESSED SWITCH	1	1	2400	2400							
54	RECESSED SWITCH	1	1	2400	2400							
55	RECESSED SWITCH	1	1	2400	2400							
56	RECESSED SWITCH	1	1	2400	2400							
57	RECESSED SWITCH	1	1	2400	2400							
58	RECESSED SWITCH	1	1	2400	2400							
59	RECESSED SWITCH	1	1	2400	2400							
60	RECESSED SWITCH	1	1	2400	2400							
61	RECESSED SWITCH	1	1	2400	2400							
62	RECESSED SWITCH	1	1	2400	2400							
63	RECESSED SWITCH	1	1	2400	2400							
64	RECESSED SWITCH	1	1	2400	2400							
65	RECESSED SWITCH	1	1	2400	2400							
66	RECESSED SWITCH	1	1	2400	2400							
67	RECESSED SWITCH	1	1	2400	2400							
68	RECESSED SWITCH	1	1	2400	2400							
69	RECESSED SWITCH	1	1	2400	2400							
70	RECESSED SWITCH	1	1	2400	2400							
71	RECESSED SWITCH	1	1	2400	2400							
72	RECES											



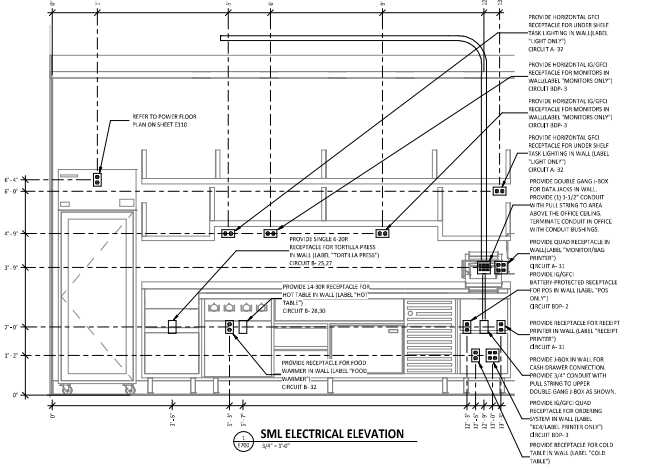
POS COUNTER ELECTRICAL ELEVATION
SCALE: 1/8" = 1'-0"



OFFICE DOOR ELECTRICAL ELEVATION
SCALE: 1/8" = 1'-0"



OFFICE DESK ELECTRICAL ELEVATION
SCALE: 1/8" = 1'-0"



SML ELECTRICAL ELEVATION
SCALE: 1/8" = 1'-0"

NATIONAL
 4035 Treanor Blvd, Suite 250
 Hilliard, Ohio 43026
 Phone: (614) 751-6610
 Fax: (614) 552-6340
 Contact: DENNIS ALT
 (614) 595-0599
 DALT@nationaltelecting.com

P0612
 NEW BRIDGE
 CHIPOTLE MEXICAN GRILL

STORE NO.: 5421
 MALLARD CREEK CHURCH RD AND
 W MALLARD CREEK CHURCH RD AND
 SENATOR ROYALL DR, CHARLOTTE, NC
 28262

ELECTRICAL INTERIOR ELEVATIONS
E700