

HOOD INFORMATION																	
HOOD NO.	MARK	MODEL	HOOD DIMENSIONS (IN.)			HOOD CONSTR.	COOKING LOAD / DUTY RATING	TOTAL CFM	EXHAUST COLLAR(S)					SUPPLY		TOTAL WEIGHT LBS.	SECTION LOCATION
			LENGTH	WIDTH	HEIGHT				WIDTH	LENGTH	DIA.	CFM	S.P.	MJA CFM	AC CFM		
1	GRIDDLE HOOD	XGEP-64-S	64	TOP 23 BOT 8	FRT 12 BACK 36	430 SS WHERE EXPOSED	MEDIUM	1500	12	12		1500	1.918			137	SINGLE

HOOD INFORMATION																	
HOOD NO.	MARK	LIGHTING DETAILS			GREASE FILTRATION DETAILS			UTILITY CABINET(S)									
		FIXTURE TYPE	BULB / LAMP INFO	QTY	FOOT CANDLES	TYPE / MODEL MATERIAL	QTY	SIZE (IN.) L H	LOCATION	FIRE SYSTEM TYPE	SIZE	MODEL	CONTROLS INTERFACE				
1	GRIDDLE HOOD					GREASE GRABBER STAINLESS STEEL	4	16	16								

HOOD OPTIONS														
UL 710 LISTED W/ OUT EXHAUST FIRE DAMPER - UL #R25625										SPECIAL DESIGN REQUESTS				
BACK NON-INTEGRAL AIR SPACE - 3 IN WIDE										SDR #K1100145 - FLUE BYPASS HOOD				
26 IN HIGH CEILING ENCLOSURES - FRONT LEFT RIGHT - FIELD INSTALLED										SDR #K1800144 - CULVERS 4VAT 2FIRE PROCESS - GRIDDLE HOOD				
FACTORY MOUNTED EXHAUST COLLAR(S)														
PERFORMANCE ENHANCING LIP (PEL) TECHNOLOGY														
STANDING SEAM CONSTRUCTION FOR SUPERIOR STRENGTH														

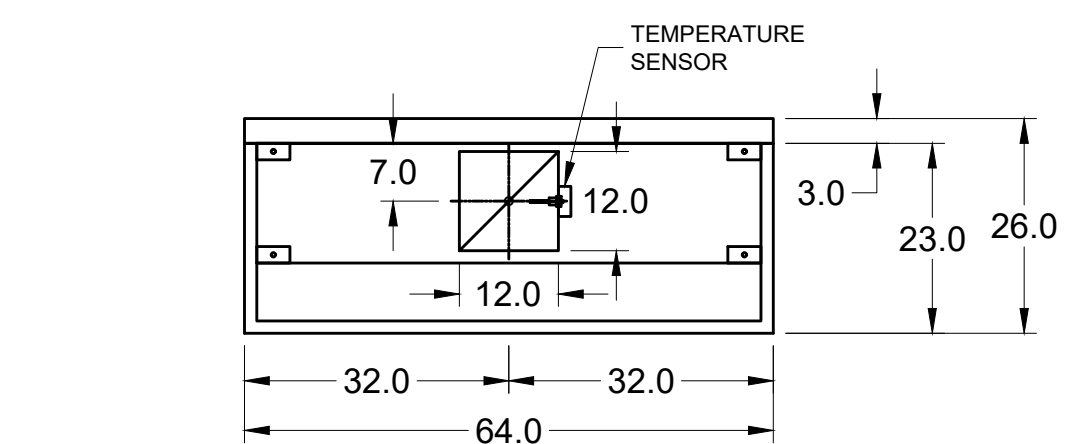
Direct Drive Upblast Centrifugal Roof Exhaust Fan														
MARK INFORMATION			FAN INFORMATION					MOTOR INFORMATION						
QTY	MARK	MODEL	VOLUME (CFM)	TOTAL EXTERNAL SP (IN WG)	FAN RPM	OPERATING POWER (HP)	WEIGHT (LB.)	SIZE (HP)	VIC/P	ENCLOSURE	MOTOR RPM	WINDINGS	NEC FLA*	
1	PRV-2 Griddle Fan	XCUE-140-VG	1,500	1.801	1,725	0.83	92	1	115/60/1	OP	1725	1	16	

\*NEC FLA - Based on table 430.250 or 430.248 of National Electrical Code 2020. Actual motor FLA may vary for sizing thermal overload, consult factory"

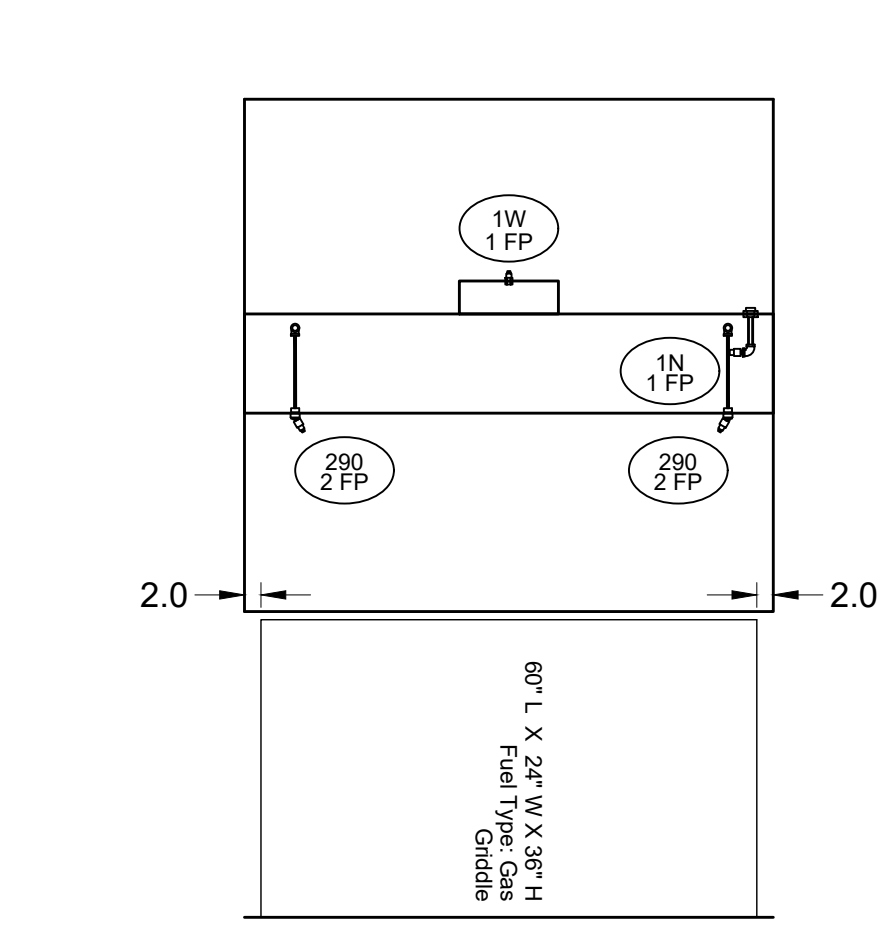
PRV-2 Griddle Fan : SELECTED OPTIONS AND ACCESSORIES														
One piece fully welded windband														
Tapered bushing wheel hub														
Breather tube outlet area min. 4.4 sq. in. (sizes 99-480), 2.0 sq. in. (sizes 60-95)														
Min. windband material thickness: 0.051" aluminum (060-240), 0.064" aluminum (240HP, 240XP), 0.080" aluminum (sizes 300-480)														
Larger Curb Cap Size - 26 Square														
UL/cUL 705 Listed - Supplement SC - "Power Ventilators for Restaurant Exh. Appliances" (Formerly UL 762)														
Switch, NEMA-3R, Toggle														
Hinge, Factory Installed														
High Temp Curb Seal Rated for Continuous Duty at 1500 F (Factory Attached)														
Grease Trap (PN 475538)														
Clean-out Port - Factory Installed														
Conduit Chase Qty 1														

FIRE SYSTEM INFORMATION									
MARK	MODEL	LOCATION	FLOW POINTS		SUPPLY LINE	DETECTION	MARK(S) PROTECTED BY FIRE SYSTEM		
			HOODS	PCU					
GRIDDLE FSS-PP	ANSUL R-102 WET CHEMICAL	RIGHT END PRE-PIPE ONLY	6 UTILIZED	11 AVAILABLE	CONTINUOUS	FUSIBLE LINK	GRIDDLE HOOD SECTION 1		

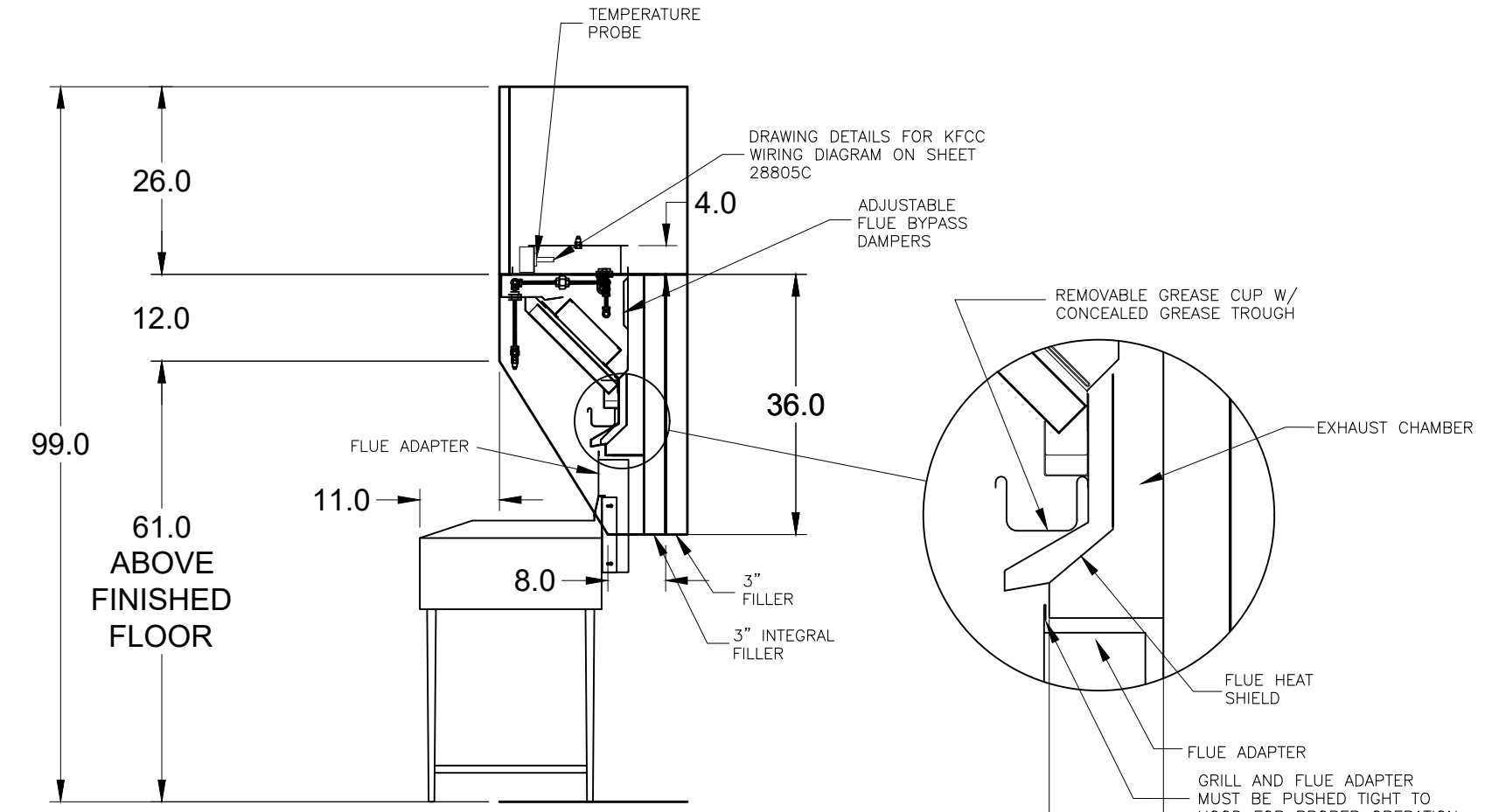
FIRE SYSTEM OPTIONS AND ACCESSORIES  
 PRE-PIPE ONLY (INCLUDES PRE-PIPED HOOD(S) WITH DETECTION ONLY)  
 CHROME SLEEVES FOR FACTORY PROVIDED APPLIANCES DROPS - INCLUDED  
 METAL BLOW-OFF CAPS - INCLUDED



MARK: Griddle Hood - SECTION 1 PLAN VIEW

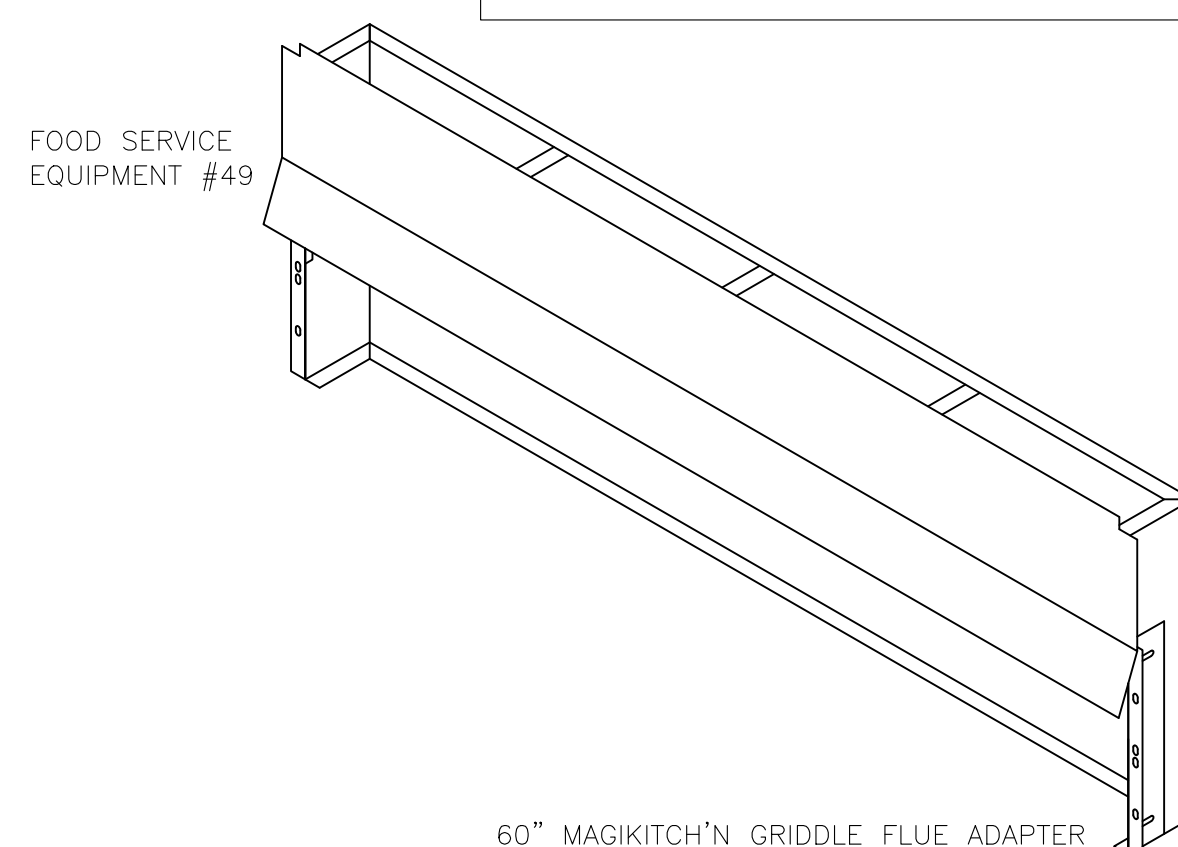


SECTION 1 ELEVATION VIEW

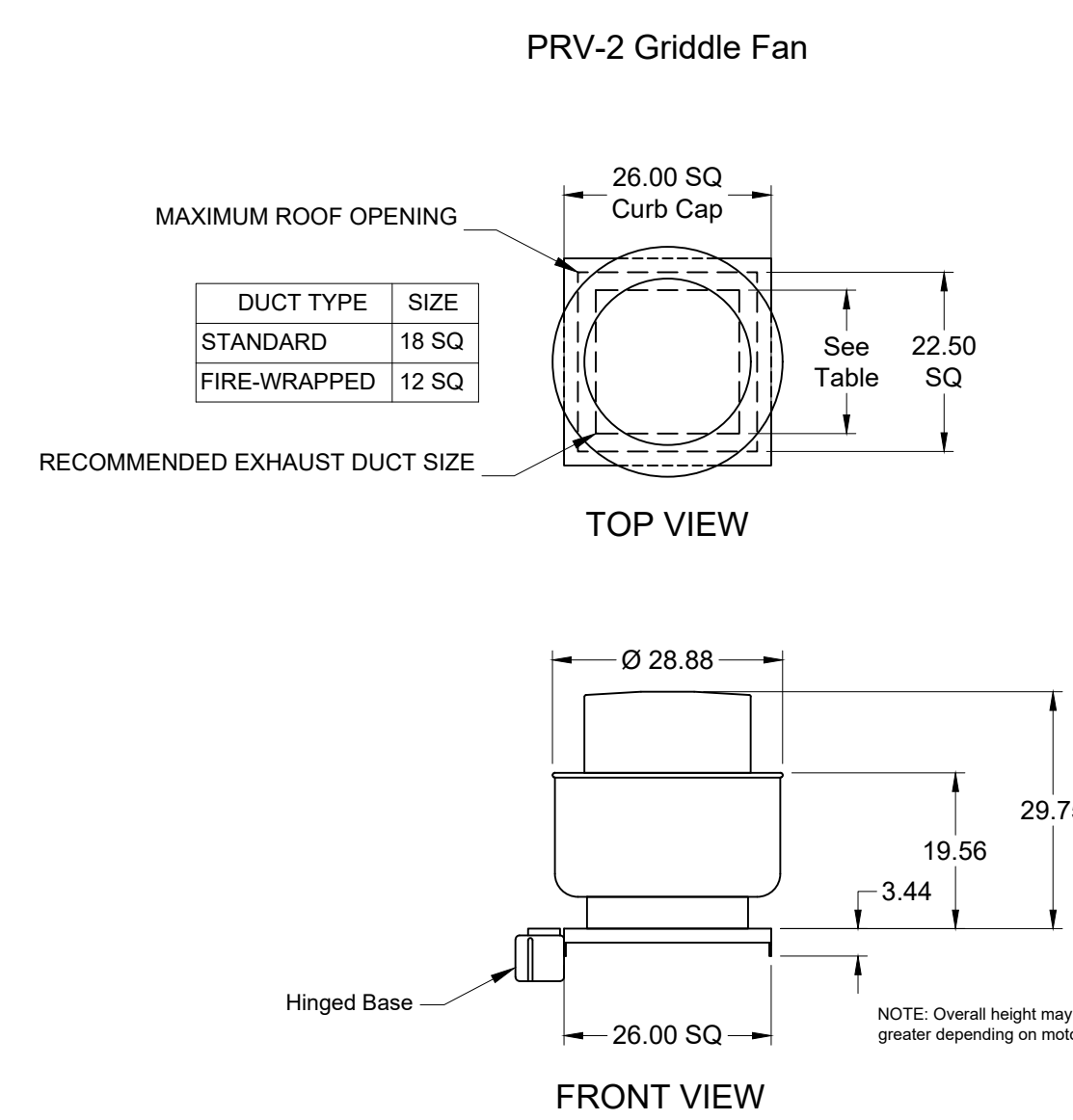


MARK: Griddle Hood SECTION VIEW

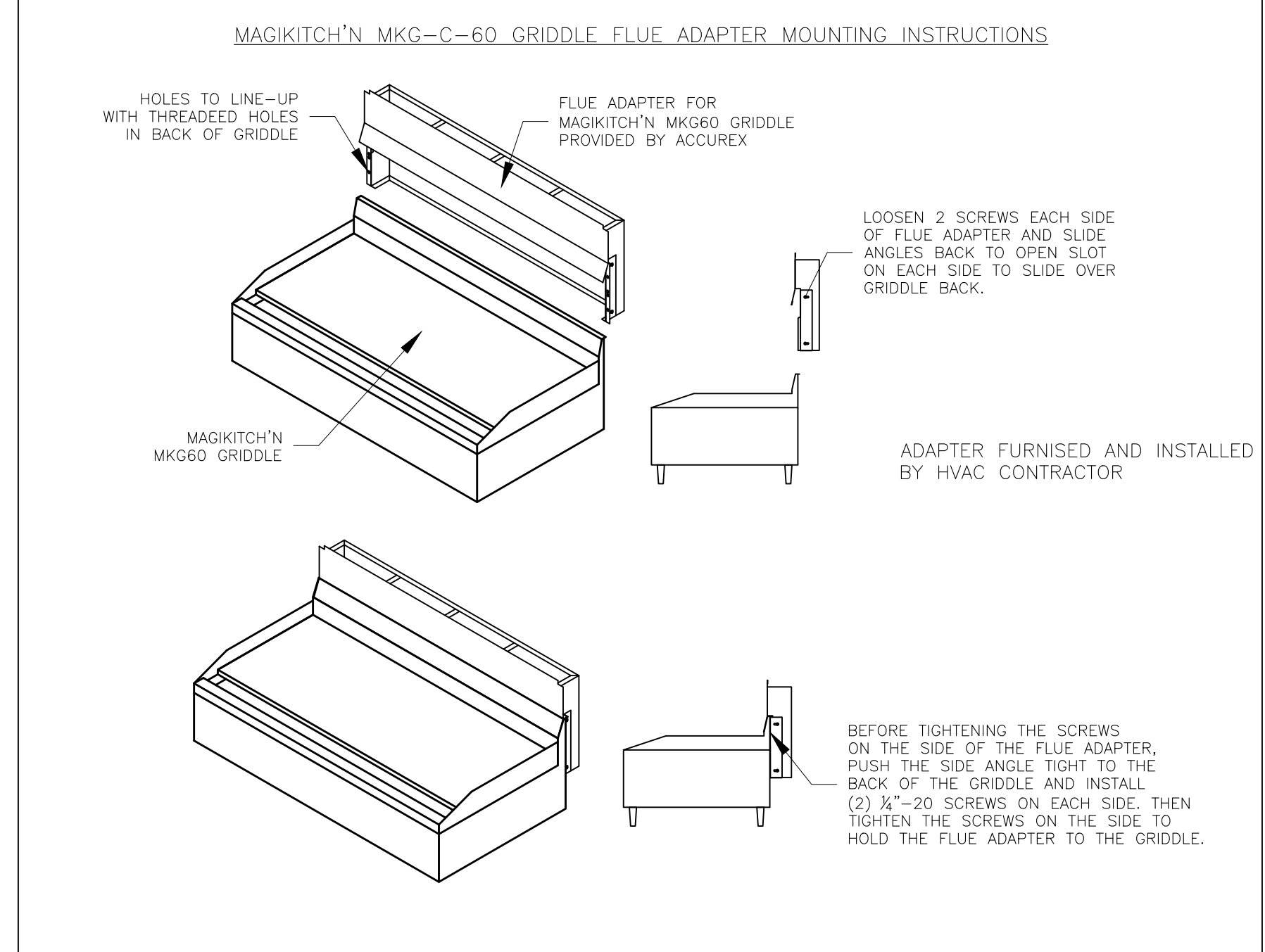
VERIFY MAGIKITCH'N OR VULCAN GRILL



MUST USE WITH ONE OF THE FOLLOWING: STAR/MAGIKITCH'N OR VULCAN



PRV-2 Griddle Fan



MAGIKITCH'N MKG-C-60 GRIDDLE FLUE ADAPTER MOUNTING INSTRUCTIONS

**ANSUL R102 (WET CHEMICAL) FIRE PROTECTION SYSTEM - MODEL FSSC**

**CONTROL PANEL**

1. STAINLESS STEEL ENCLOSURE
2. AGENT STORAGE TANK
3. EXPIRANT GAS CARTRIDGE
4. ANSUL AUTOMAN RELEASE
5. REGULATOR
6. KNOCKOUT FOR WIRING MICROSWITCH

**WIRING DIAGRAMS**  
 WIRING DIAGRAMS W/DPOT MICRO SWITCH  
 DPOT SWITCHES PROVIDED BY MANUFACTURER MAY BE WIRED PER TYPICAL EXAMPLES SHOWN. VERIFY WITH LOCAL CODES AND EQUIPMENT SUPPLIER AS THE CONNECTION NEEDED FOR YOUR INSTALLATION.

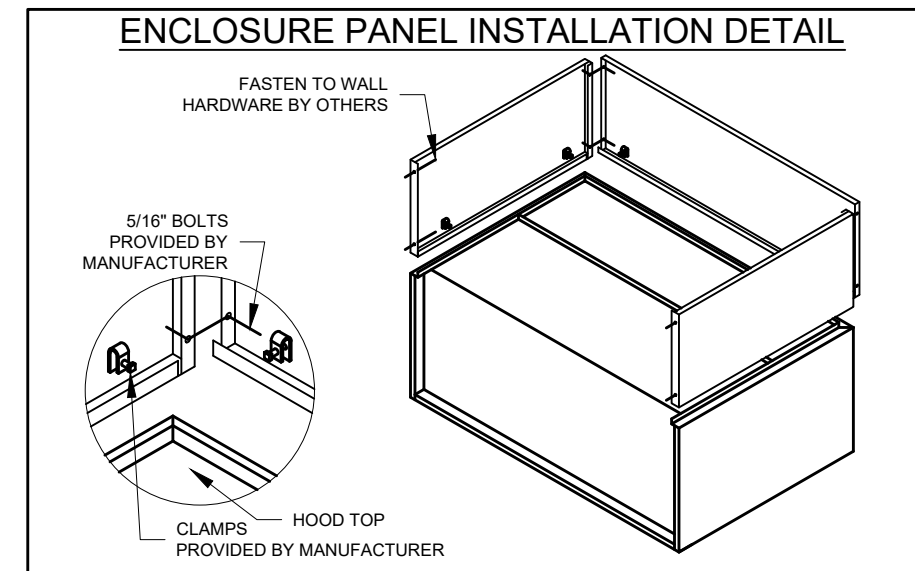
**CONNECTION TO BUILDINGS ALARM**  
 VOLTAGE FREE CONNECTION FOR BUILDINGS ALARM

**CONNECTION TO COOKING EQUIPMENT EQUIPMENT SHUT DOWN**  
 POWER TO COOKING EQUIPMENT  
 SHUNT TRIP WEARER

**CONNECTION TO FAN SHUT DOWN**  
 POWER TO FAN SHUT DOWN  
 MANUAL SWITCH

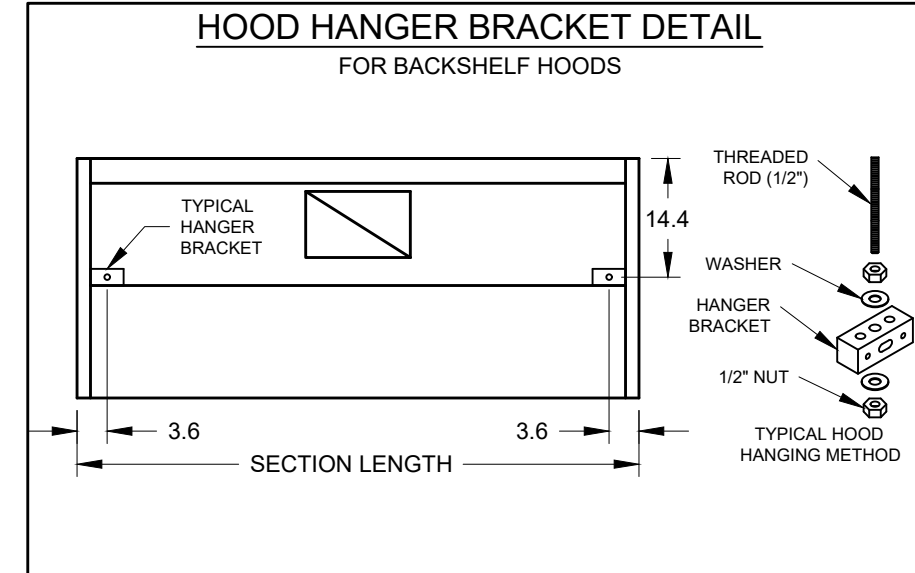
**NOTES:**  
 WET CHEMICAL FIRE PROTECTION SYSTEM TO BE ANSUL R-102. DESIGNED IN COMPLIANCE WITH UL 300 REQUIREMENTS.  
 -VERIFICATION OF ALL COOKING EQUIPMENT MAKE, MODEL AND LOCATION REQUIRED FOR ALL FIRE PROTECTION SYSTEMS.  
 -ALL FIRE SYSTEM PIPING IS STANDARD TO THE RIGHT END OF THE HOOD UNLESS A WALL IS LOCATED ON THE RIGHT END.  
 -ANSUL AUTOMAN RELEASE TO BE LOCATED WITHIN 60" OF HOOD.  
 -THE BASIC FIRE SYSTEM WILL INCLUDE THE FOLLOWING:  
 -GAS SHUT-OFF VALVE, IF REQUIRED, TO BE SUPPLIED BY MANUFACTURER (UP TO 2" DIAMETER AS STANDARD), AND INSTALLED BY A LICENSED PLUMBER.  
 -MICRO SWITCH TO BE SUPPLIED BY MANUFACTURER FOR CONNECTION TO, BUT NOT LIMITED TO, BUILDING ALARM SYSTEMS, EXHAUST AND SUPPLY FANS AND ELECTRICAL POWER SHUT DOWN. FIELD WIRING AND CONNECTIONS TO BE PERFORMED BY A LICENSED ELECTRICIAN.  
 -THE BASIC FIRE SYSTEM DOES NOT INCLUDE THE FOLLOWING:  
 -FULL DUMP TEST OTHER THAN WHAT IS SPECIFIED PER THE INSTALLATION MANUAL, OR TO SATISFY A STATE OR LOCAL CODE. PERMIT AND TESTING FEES ARE NOT INCLUDED UNLESS NOTED UNDER THE EQUIPMENT SCHEDULE FOR THE FIRE SYSTEM.  
 -MORE THAN TWO TRIPS TO THE JOBSITE OR SPECIAL TRANSPORTATION, OR OVERNIGHT LOGGING REQUIREMENTS IN REMOTE AREAS. NORMAL TRAVEL DISTANCE IS FIRST 50 MI. (80.5 KM) FROM OFFICE.  
 -SPECIAL CLASSES OR ADDITIONAL LABOR FOR ACCESS TO SECURITY SENSITIVE AREAS.  
 -INSTALLATION OF GAS SHUT-OFF VALVE.  
 -SPECIAL DRAWINGS REQUIRED TO SATISFY STATE OR LOCAL CODE. PLAN EXAMINATION FEES, PE OR FS APPROVAL STAMP.  
 -UNION LABOR, GOVERNMENT LABOR, OR PREVAILING WAGES REQUIRED FOR FINAL FIELD HOOK UP.  
 -ANY AND ALL ELECTRICAL COMPONENTS/CONNECTIONS REQUIRED TO SHUT DOWN FANS, SHUT OFF DEVICE FOR ELECTRIC COOKING EQUIPMENT (SHUNT TRIP BREAKER), OR ACTIVATE AN ALARM SYSTEM, ETC.  
 -ANY DISMANTLING OR REASSEMBLY REQUIRED TO GAIN ACCESS TO THE FIRE SUPPRESSION PIPING LOCATED ON THE TOP OF THE HOOD.  
 -ROUGH-IN HIDDEN CONDUIT FOR REMOTE PULL STATION OR GAS VALVE (FLUSH MOUNTED PULL STATION).  
 -INSTALLATION OF MORE THAN (1) REMOTE PULL STATIONS OR DISTANCES GREATER THAN 20 FT (6.1M).  
 -PARTS OR LABOR REQUIRED TO CORRECT PIPING DUE TO COOKING EQUIPMENT CHANGES OR DEVIATION FROM PLANS, OR ANY CHARGES FOR MISSING OR ADDITIONAL PARTS OTHER THAN THOSE INDICATED ON THE FIRE SUPPRESSION DETAIL.

**NOTES:**  
 1. \_\_\_\_\_ DENOTES FIELD INSTALLATION.  
 2. \_\_\_\_\_ DENOTES FACTORY INSTALLATION.  
 3. DO NOT USE BLACK WIRE ON SNAP-ACTION SWITCH IN NORMAL INSTALLATION. BLACK WIRE TO BE USED ONLY FOR EXTRANEOUS ALARM, LIGHT CIRCUITS, ETC.



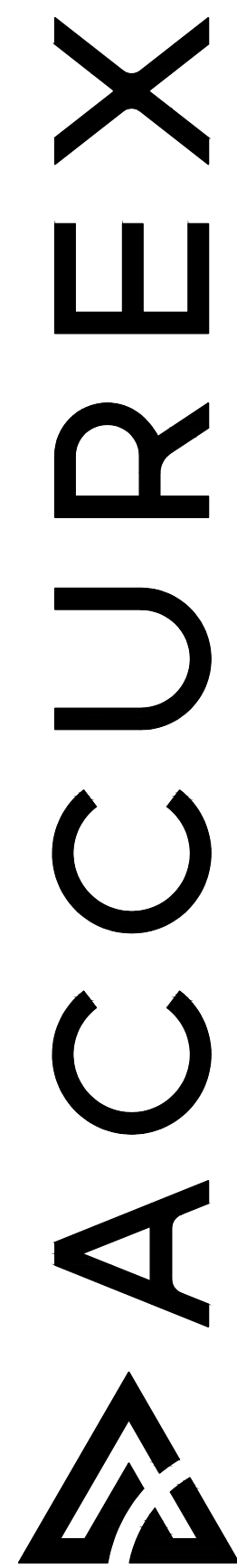
**HOOD HANGING HEIGHT FOR FIRE SYSTEMS**  
 VERIFICATION OF HOOD HANGING HEIGHT ABOVE FINISHED FLOOR (A.F.F.) IS REQUIRED FOR CORRECT PLACEMENT OF FIRE SYSTEM NOZZLES.

- RECOMMENDED HANGING HEIGHT = 61" FROM FINISHED FLOOR TO LOWER FRONT EDGE OF HOOD.
- OTHER HANGING HEIGHT = \_\_\_\_\_" FROM FINISHED FLOOR TO LOWER EDGE OF HOOD.



SECTION LENGTH

PROJECT 12/4/2019  
 ACCUREX - WI, IA  
 PHILLIP KRAFT  
 PHILLIP.KRAFT@ACCUREX.COM  
 262-227-7865  
 UL LISTED  
 GRIDDLE HOOD  
 PRV-2 GRIDDLE FAN  
 FIRE SUPPRESSION-GRIDDLE HOOD  
 CULVERS - STOUGHTON, WI  
 REMODEL  
 MARK



HOOD INFORMATION																	
HOOD NO.	MARK	MODEL	HOOD DIMENSIONS (IN.)			HOOD CONSTR.	COOKING LOAD / DUTY RATING	TOTAL CFM	EXHAUST COLLAR(S)					SUPPLY		TOTAL WEIGHT LBS.	SECTION LOCATION
			LENGTH	WIDTH	HEIGHT				WIDTH	LENGTH	DIA.	CFM	S.P.	MUA CFM	AC CFM		
1	FRYER HOOD	XXEP-83-S	83	TOP 23 BOT 3	FRT 12 BACK 36	430 SS WHERE EXPOSED	MEDIUM	1500	12	12		1500	0.518			169	SINGLE

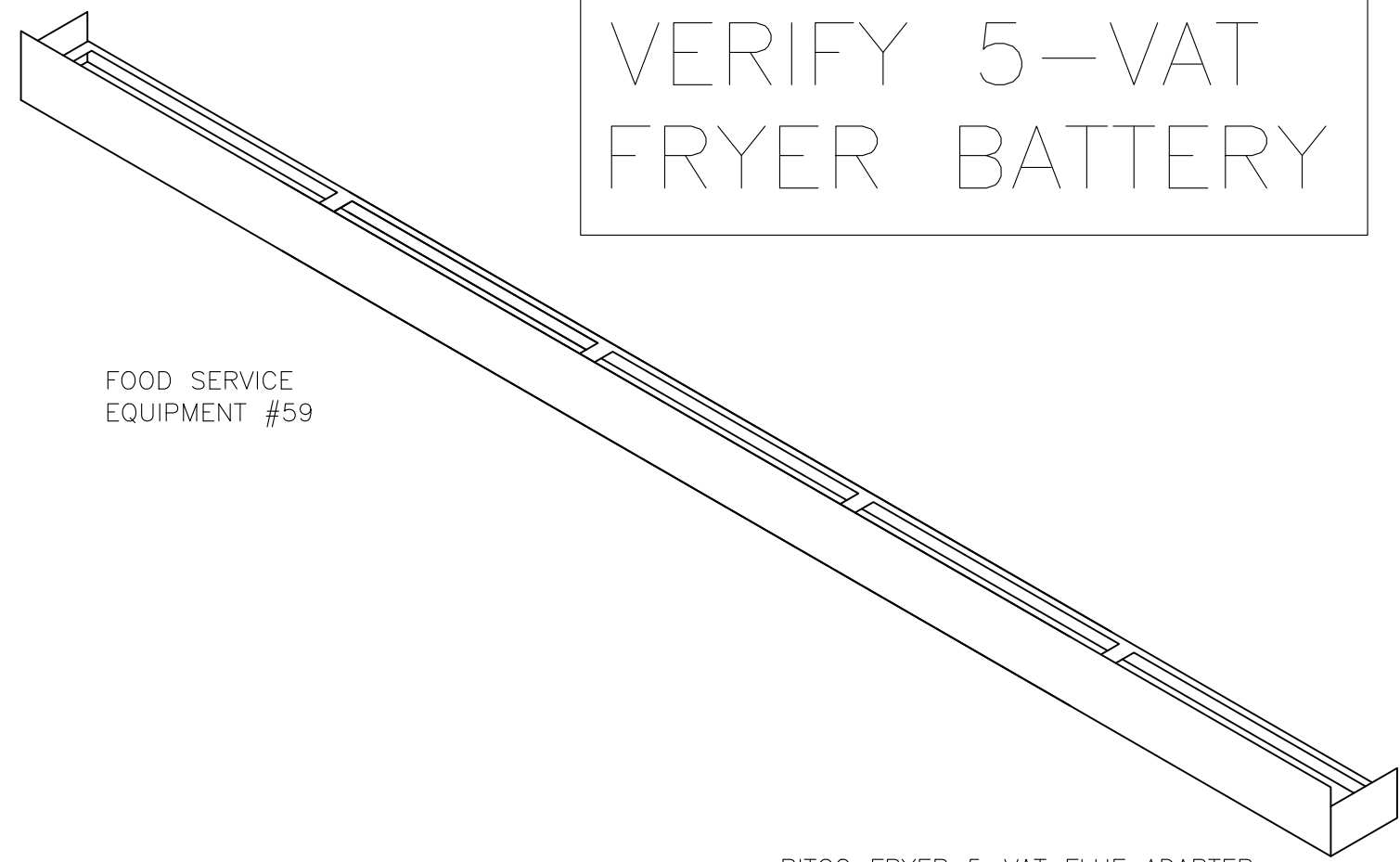
HOOD INFORMATION																
HOOD NO.	MARK	LIGHTING DETAILS			GREASE FILTRATION DETAILS			UTILITY CABINET(S)								
		FIXTURE TYPE	BULB / LAMP INFO	QTY	FOOT CANDLES	TYPE / MODEL MATERIAL	QTY	SIZE (IN.) L H	LOCATION	FIRE SYSTEM TYPE	SIZE	MODEL	CONTROLS INTERFACE			
1	FRYER HOOD					X-TRACTOR STAINLESS STEEL	5	16	16							

HOOD OPTIONS															
UL 710 LISTED W/ OUT EXHAUST FIRE DAMPER - UL #R25625								SPECIAL DESIGN REQUESTS							
BACK NON-INTEGRAL AIR SPACE - 3 IN WIDE								SDR #K2300199 - CULVERS FLUE BYPASS 5 VAT FRYER LINEUP							
26 IN HIGH CEILING ENCLOSURES - FRONT LEFT RIGHT - FIELD INSTALLED															
FACTORY MOUNTED EXHAUST COLLAR(S)															
PERFORMANCE ENHANCING LIP (PEL) TECHNOLOGY															
STANDING SEAM CONSTRUCTION FOR SUPERIOR STRENGTH															

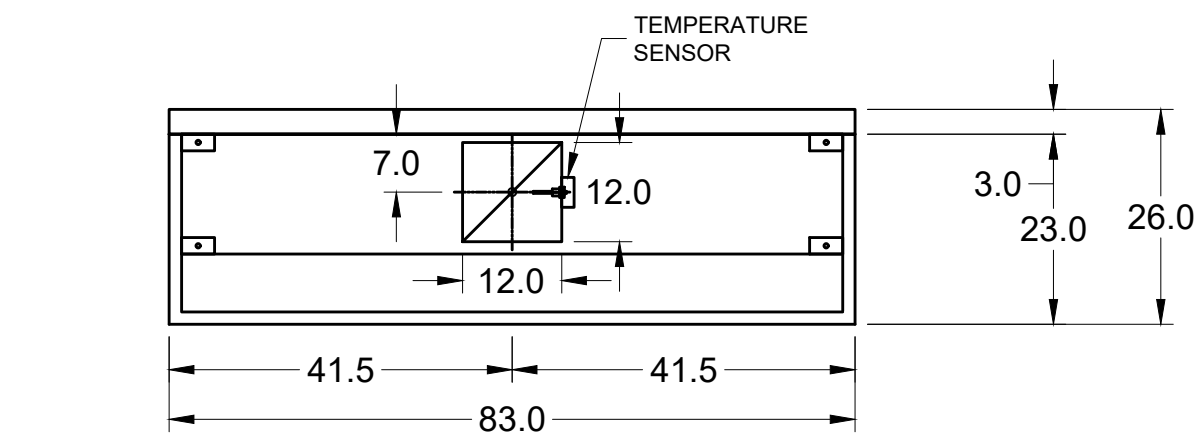
Direct Drive Upblast Centrifugal Roof Exhaust Fan															
MARK INFORMATION		FAN INFORMATION						MOTOR INFORMATION							
QTY	MARK	MODEL	VOLUME (CFM)	TOTAL EXTERNAL SP (IN WG)	FAN RPM	OPERATING POWER (HP)	WEIGHT (LB.)	SIZE (HP)	V/C/P	ENCLOSURE	MOTOR RPM	WINDINGS	NEC FLA*		
1	PRV-3 Fryer Fan	XCUE-140-VG	1,500	1	1,365	0.46	92	1	115/60/1	OP	1725	1	16		

\*NEC FLA - Based on table 430.250 or 430.248 of National Electrical Code 2020. Actual motor FLA may vary for sizing thermal overload, consult factory\*

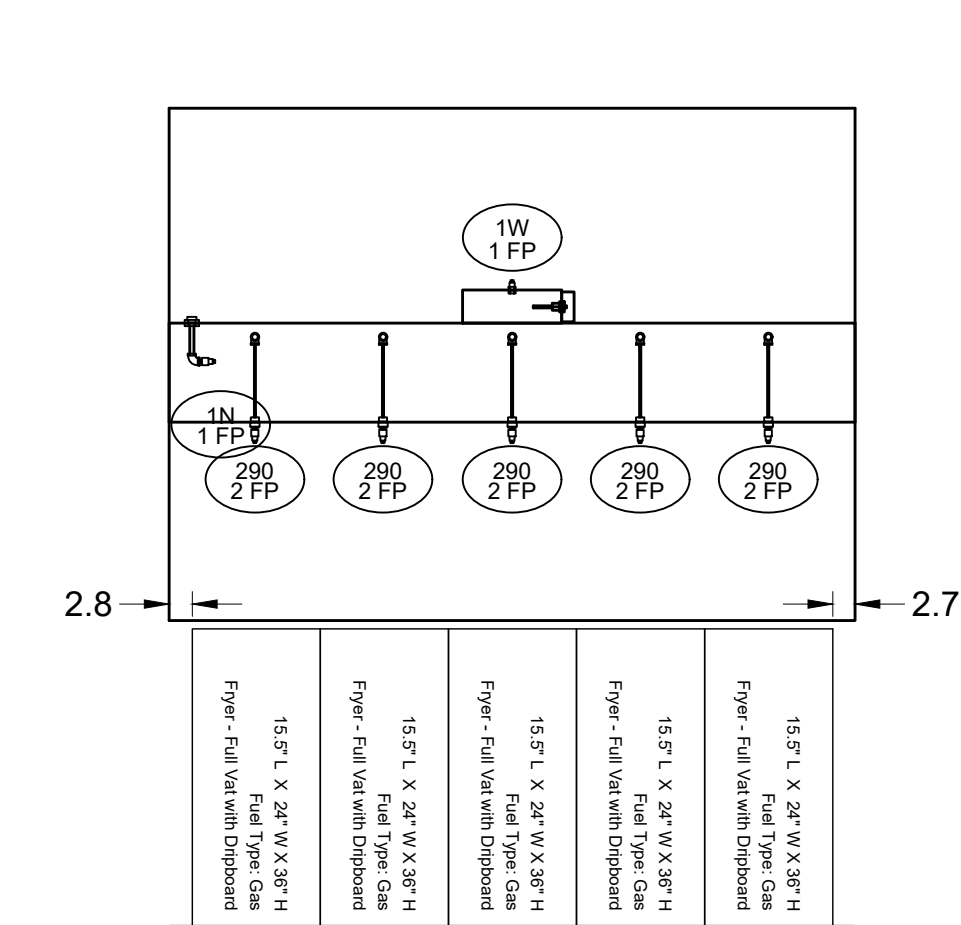
PRV-3 Fryer Fan : SELECTED OPTIONS AND ACCESSORIES															
One piece fully welded windband															
Tapered bushing wheel hub															
Breather tube outlet area min. 4.4 sq. in. (sizes 99-480), 2.0 sq. in. (sizes 60-95)															
Min. windband material thickness: 0.051" aluminum (060-240), 0.064" aluminum (240HP, 240XP), 0.080" aluminum (sizes 300-480)															
Larger Curb Cap Size - 26 Square															
UL/cUL 705 Listed - Supplement SC - "Power Ventilators for Restaurant Exh. Appliances" (Formerly UL 762)															
Switch, NEMA-3R, Toggle, Hinge, Factory Installed															
High Temp Curb Seal Rated for Continuous Duty at 1500 F (Factory Attached)															
Grease Trap (PN 475538)															
Clean-out Port - Factory Installed															
Conduit Chase Qty 1															



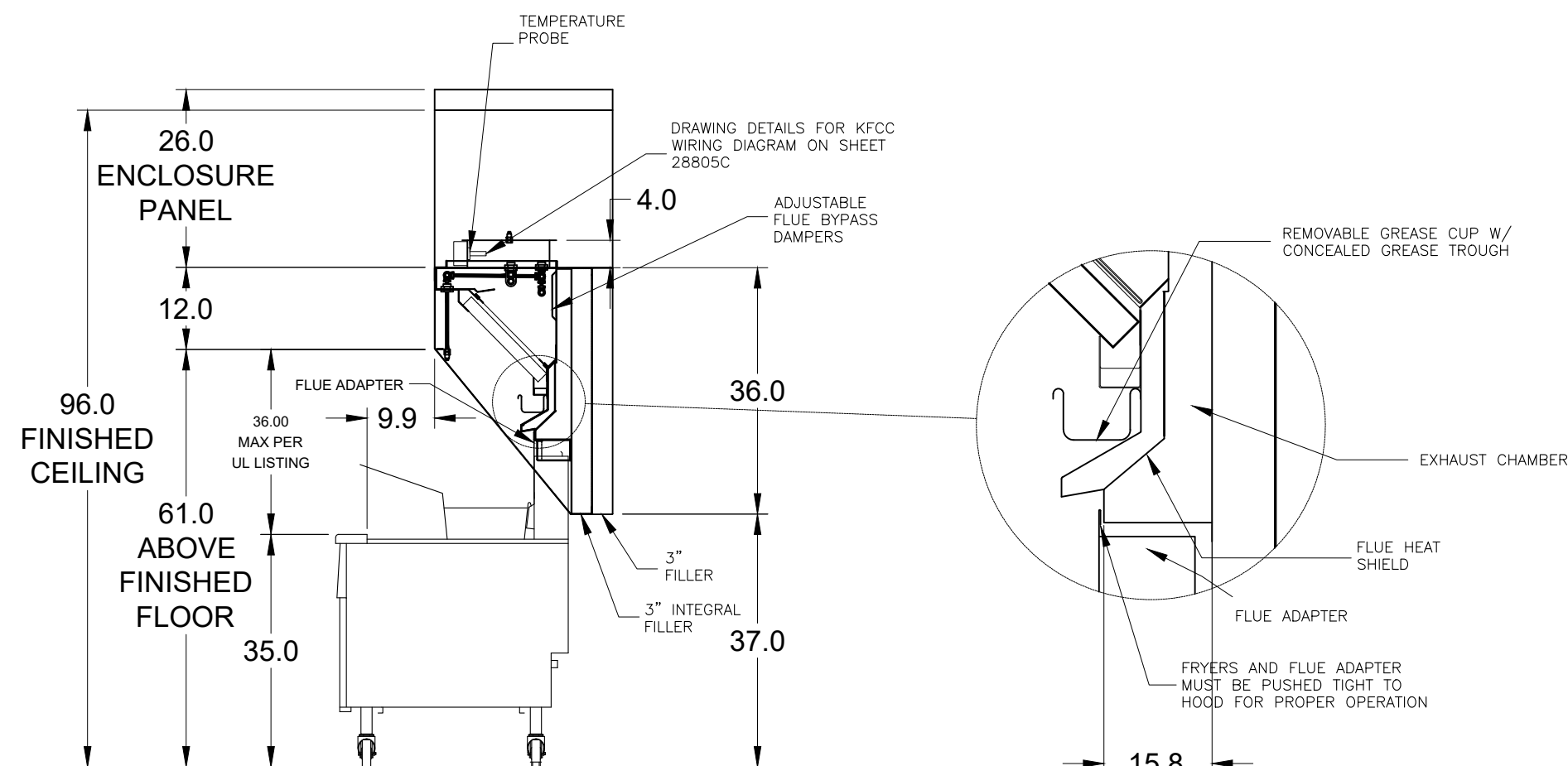
PITCO FRYER 5-VAT FLUE ADAPTER



MARK: Fryer Hood - SECTION 1 PLAN VIEW



MARK: Fryer Hood - SECTION 1 ELEVATION VIEW

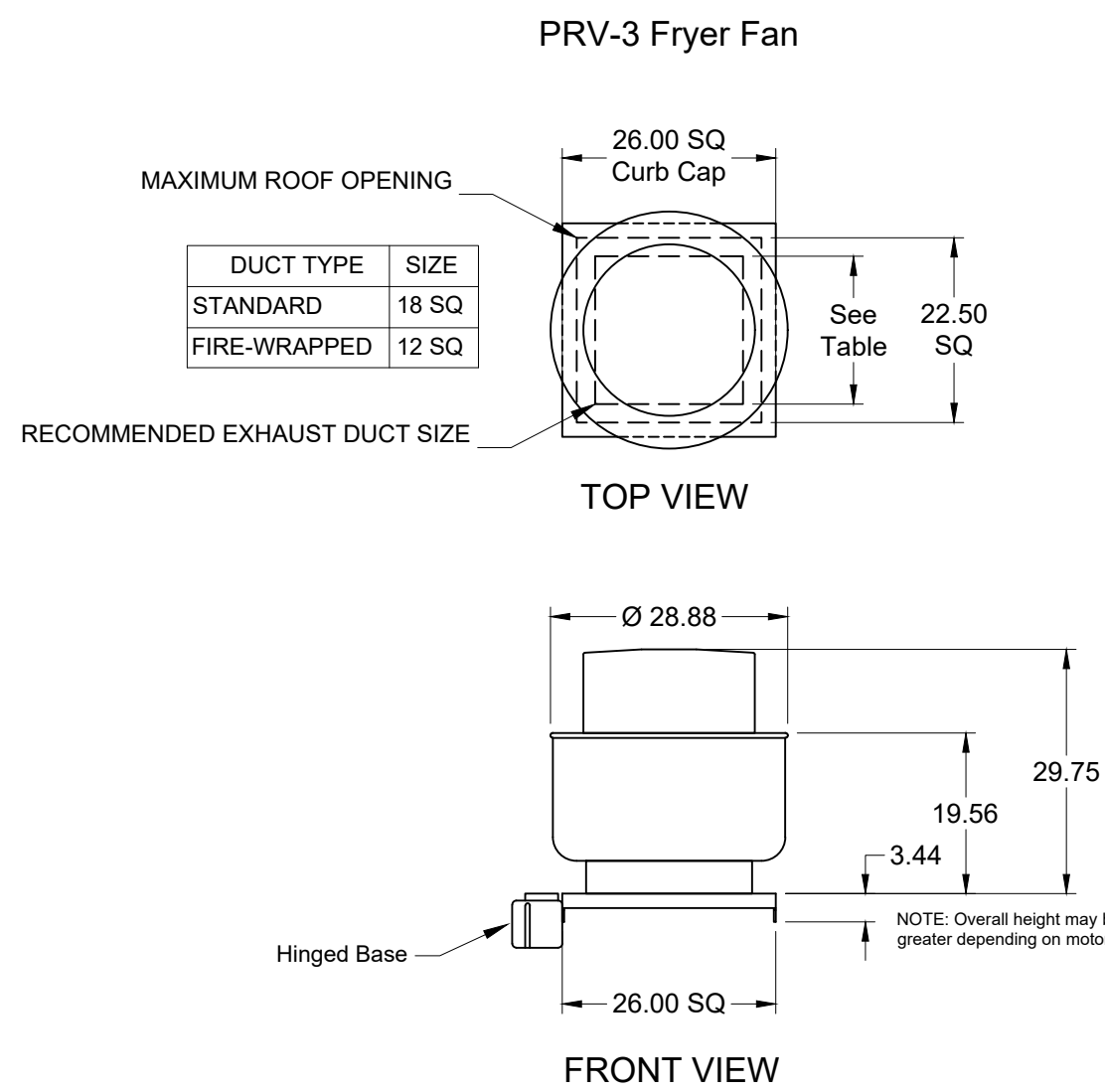


MARK: ITEM #59 SECTION VIEW

MUST USE WITH ONE OF THE FOLLOWING: PITCO OR FRYMASTER

FIRE SYSTEM INFORMATION															
MARK	MODEL	LOCATION	FLOW POINTS		SUPPLY LINE	DETECTION	MARK(S) PROTECTED BY FIRE SYSTEM								
			HOODS	PCU											
FRYER FSS-PP	ANSUL R-102 WET CHEMICAL	LEFT END PRE-PIPE ONLY	18 UTILIZED	22 AVAILABLE	CONTINUOUS	FUSIBLE LINK	FRYER HOOD SECTION 1								

FIRE SYSTEM OPTIONS AND ACCESSORIES  
 PRE-PIPE ONLY (INCLUDES PRE-PIPED HOOD(S) WITH DETECTION ONLY)  
 CHROME SLEEVES FOR FACTORY PROVIDED APPLIANCES DROPS - INCLUDED  
 METAL BLOW-OFF CAPS - INCLUDED



PRV-3 Fryer Fan

ANSUL R102 (WET CHEMICAL) FIRE PROTECTION SYSTEM - MODEL FSSC

**CONTROL PANEL**

- STAINLESS STEEL ENCLOSURE
- AGENT STORAGE TANK
- EXPELLANT GAS CARTRIDGE
- ANISUL AUTOMAN RELEASE
- REGULATOR
- KNOCKOUT FOR WIRING MICROSWITCH

**WIRING DIAGRAMS**  
 WIRING MICRO SWITCH  
 DPDT SWITCHES PROVIDED BY MANUFACTURER MAY BE WIRED PER TYPICAL EXAMPLES SHOWN. VERIFY WITH LOCAL CODES AND EQUIPMENT SUPPLIER AS THE CONNECTION NEEDED FOR YOUR INSTALLATION.

**CONNECTION TO BUILDING ALARM**

**CONNECTION TO COOKING EQUIPMENT SHUT DOWN**

**CONNECTION TO FAN SHUT DOWN**

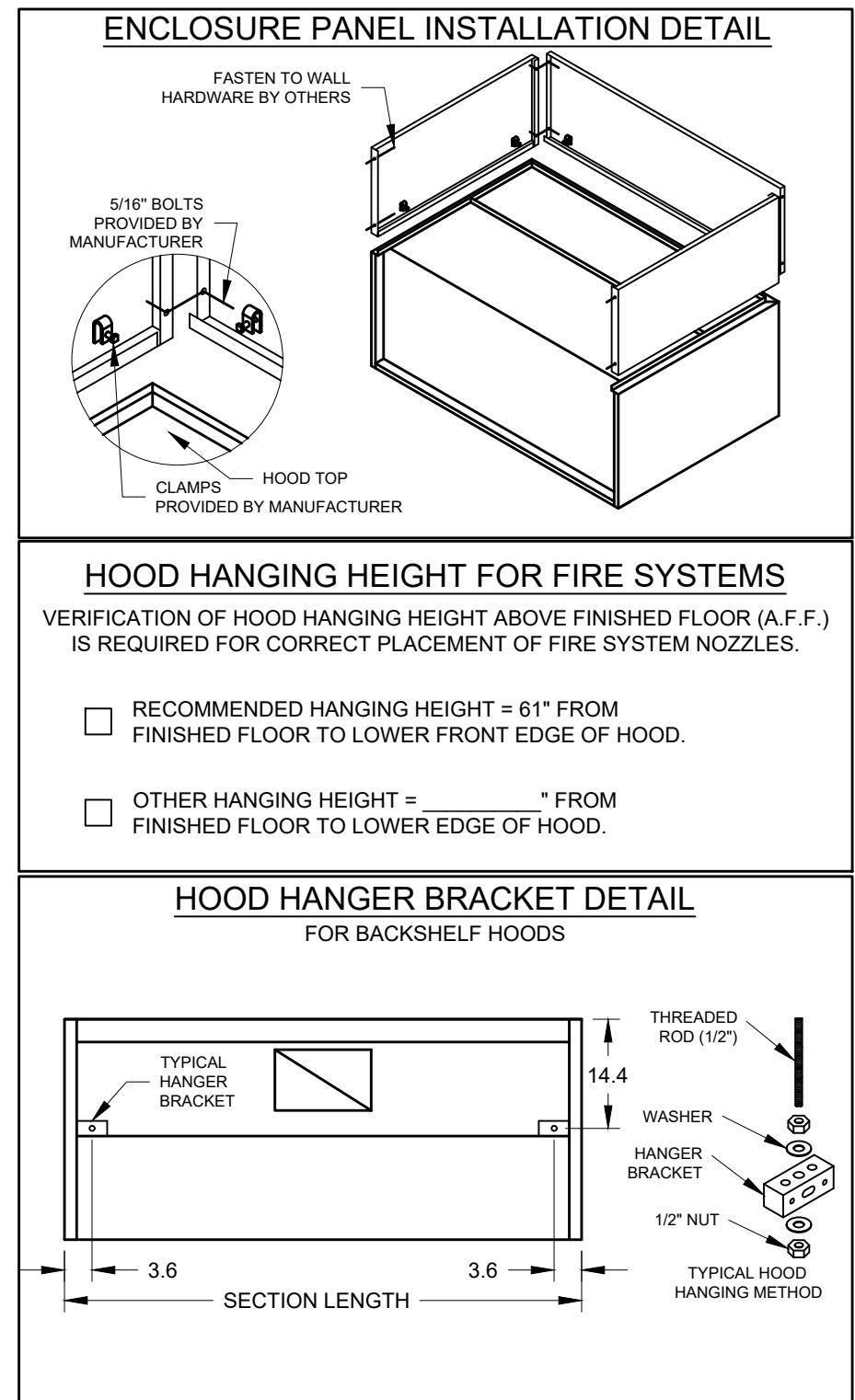
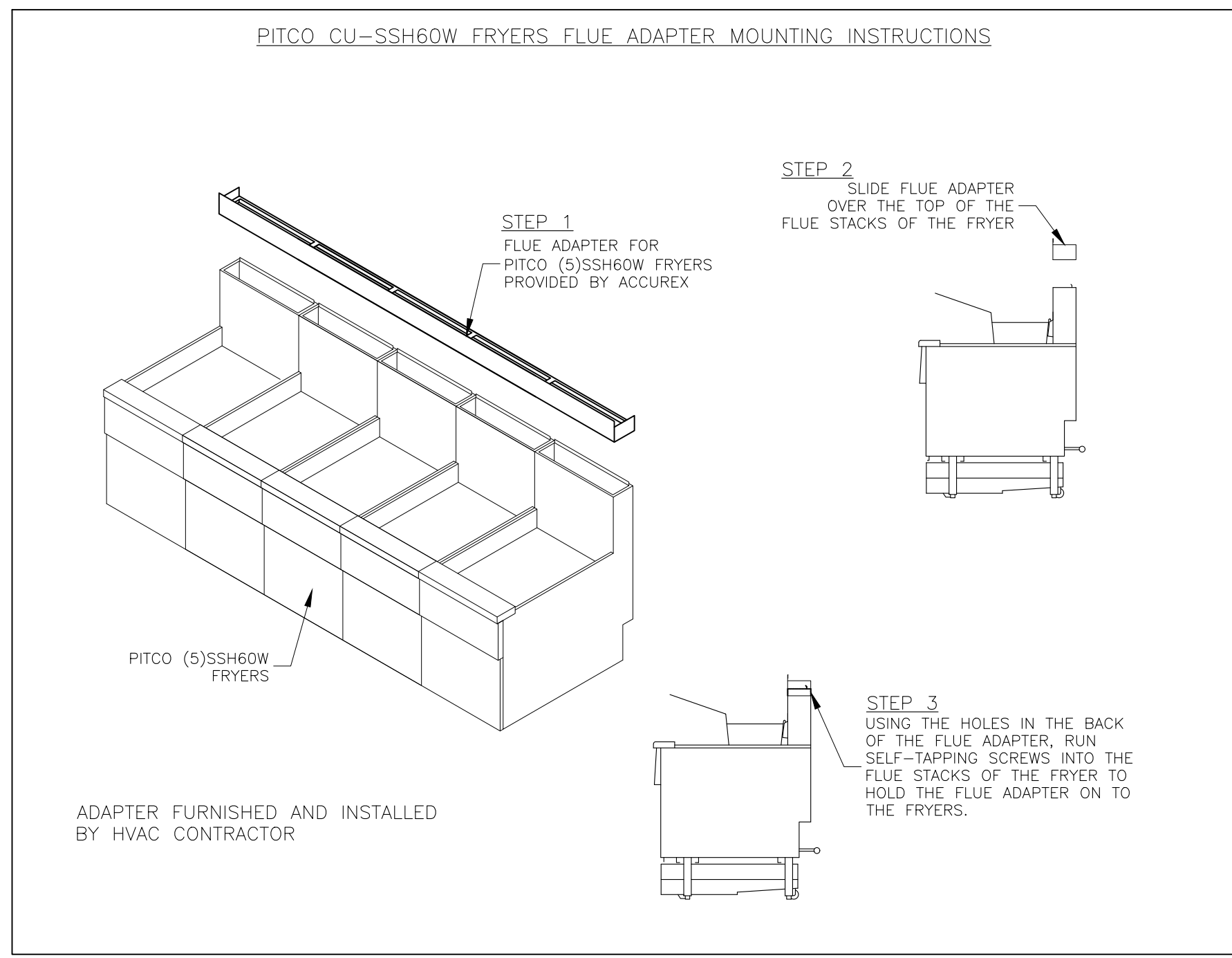
**NOTES:**

WET CHEMICAL FIRE PROTECTION SYSTEM TO BE ANSUL R-102. DESIGNED IN COMPLIANCE WITH UL 300 REQUIREMENTS.  
 -VERIFICATION OF ALL COOKING EQUIPMENT MAKE, MODEL AND LOCATION REQUIRED FOR ALL FIRE PROTECTION SYSTEMS.  
 -ALL FIRE SYSTEM PIPING IS STANDARDLY TO THE RIGHT END OF THE HOOD UNLESS A WALL IS LOCATED ON THE RIGHT END.  
 -ANSUL AUTOMAN RELEASE TO BE LOCATED WITHIN 60" OF HOOD.

THE BASIC FIRE SYSTEM WILL INCLUDE THE FOLLOWING:  
 -GAS SHUT-OFF VALVE, IF REQUIRED, TO BE SUPPLIED BY MANUFACTURER (UP TO 2" DIAMETER AS STANDARD) AND INSTALLED BY A LICENSED PLUMBER.  
 -MICRO SWITCH TO BE SUPPLIED BY MANUFACTURER FOR CONNECTION TO, BUT NOT LIMITED TO, BUILDING ALARM SYSTEM(S), EXHAUST AND SUPPLY FANS AND ELECTRICAL POWER SHUT DOWN. FIELD WIRING AND CONNECTIONS TO BE PERFORMED BY A LICENSED ELECTRICIAN.

THE BASIC FIRE SYSTEM DOES NOT INCLUDE THE FOLLOWING:  
 -FULL DUMP TEST OTHER THAN WHAT IS SPECIFIED PER THE INSTALLATION MANUAL, OR TO SATISFY A STATE OR LOCAL CODE. PERMIT AND TESTING FEES ARE NOT INCLUDED UNLESS NOTED UNDER THE EQUIPMENT SCHEDULE FOR THE FIRE SYSTEM.  
 -MORE THAN TWO TRIPS TO THE JOBSITE OR SPECIAL TRANSPORTATION, OR OVERNIGHT LOGGING REQUIREMENTS IN REMOTE AREAS. NORMAL TRAVEL DISTANCE IS FIRST 50 MI. (80.5 KM) FROM OFFICE.  
 -SPECIAL CLASSES OR ADDITIONAL LABOR FOR ACCESS TO SECURITY SENSITIVE AREAS.  
 -INSTALLATION OF GAS SHUT-OFF VALVE.  
 -SPECIAL DRAWINGS REQUIRED TO SATISFY STATE OR LOCAL CODE. PLAN EXAMINATION FEES, PE OR FS APPROVAL STAMP.  
 -UNION LABOR, GOVERNMENT LABOR, OR PREVAILING WAGES REQUIRED FOR FINAL FIELD HOOK-UP.  
 -ANY AND ALL ELECTRICAL COMPONENTS/CONNECTIONS REQUIRED TO SHUT DOWN FANS, SHUT OFF DEVICE FOR ELECTRIC COOKING EQUIPMENT (SHUNT TRIP BREAKER), OR ACTIVATE AN ALARM SYSTEM, ETC.  
 -ANY DISMANTLING OR REASSEMBLY REQUIRED TO GAIN ACCESS TO THE FIRE SUPPRESSION PIPING LOCATED ON THE TOP OF THE HOOD.  
 -ROUGH-IN HIDDEN CONDUIT FOR REMOTE PULL STATION OR GAS VALVE (FLUSH MOUNTED PULL STATION).  
 -INSTALLATION OF MORE THAN (1) REMOTE PULL STATIONS OR DISTANCES GREATER THAN 20 FT (6.1M).  
 -PARTS OR LABOR REQUIRED TO CORRECT PIPING DUE TO COOKING EQUIPMENT CHANGES OR DEVIATION FROM PLANS. OR ANY CHARGES FOR MISSING OR ADDITIONAL PARTS OTHER THAN THOSE INDICATED ON THE FIRE SUPPRESSION DETAIL.

**NOTES:**  
 1. \_\_\_\_\_ DENOTES FIELD INSTALLATION.  
 2. \_\_\_\_\_ DENOTES FACTORY INSTALLATION.  
 3. DO NOT USE BLACK WIRE ON SNAP-ACTION SWITCH IN NORMAL INSTALLATION. BLACK WIRE TO BE USED ONLY FOR EXTRANEOUS ALARM, LIGHT CIRCUITS, ETC.



CONTROL INFORMATION

MARK	ELECTRICAL CONTROL PACKAGE		USER INTERFACE		FANS CONTROLLED											
	MODEL	LOCATION	TYPE	LOCATION	FAN #	TYPE	FAN	FAN MARK	ZONE	CFM	MOTOR HP	MOTOR VOLT	CYCLE	MOTOR PHASE	MOTOR STARTER IN PANEL	VFD IN PANEL
CONTROLS	XKC-CV-S-22-2-1-0	SHIP LOOSE ENCLOSURE	FULL COLOR TOUCHSCREEN	SHIP LOOSE	1	SUPPLY	S1	RTU-1	1	1500	1	208	60	3	NO	NO
					2	SUPPLY	S2	RTU-2	2	1500	1	208	60	3	NO	NO
					3	EXHAUST	E1	PRV-2 GRIDDLE FAN	2	1497	1	115	60	1	NO	NO
					4	EXHAUST	E2	PRV-3 FRYER FAN	1	1500	1	115	60	1	NO	NO

**CONTROL FEATURES**  
 TEMP SENSORS (FACTORY INSTALLED) - QTY. 2  
 DRY FIRE CONTACTS - QTY. 2  
 EXHAUST MAX DURING FIRE  
 SUPPLY OFF DURING FIRE

**SPECIAL DESIGN REQUESTS**  
 SDR #K2000462 - CULVERS CONTROL PANEL - EXTRA SET OF FIRE CONTACTS - REVISE WIRING DIAGRAMS



DOC NUMBER: ##### REV: #####

**CAUTION**  
UNIT MUST BE GROUNDED IN ACCORDANCE WITH N.E.C. POWER MUST BE OFF WHILE SERVICING.

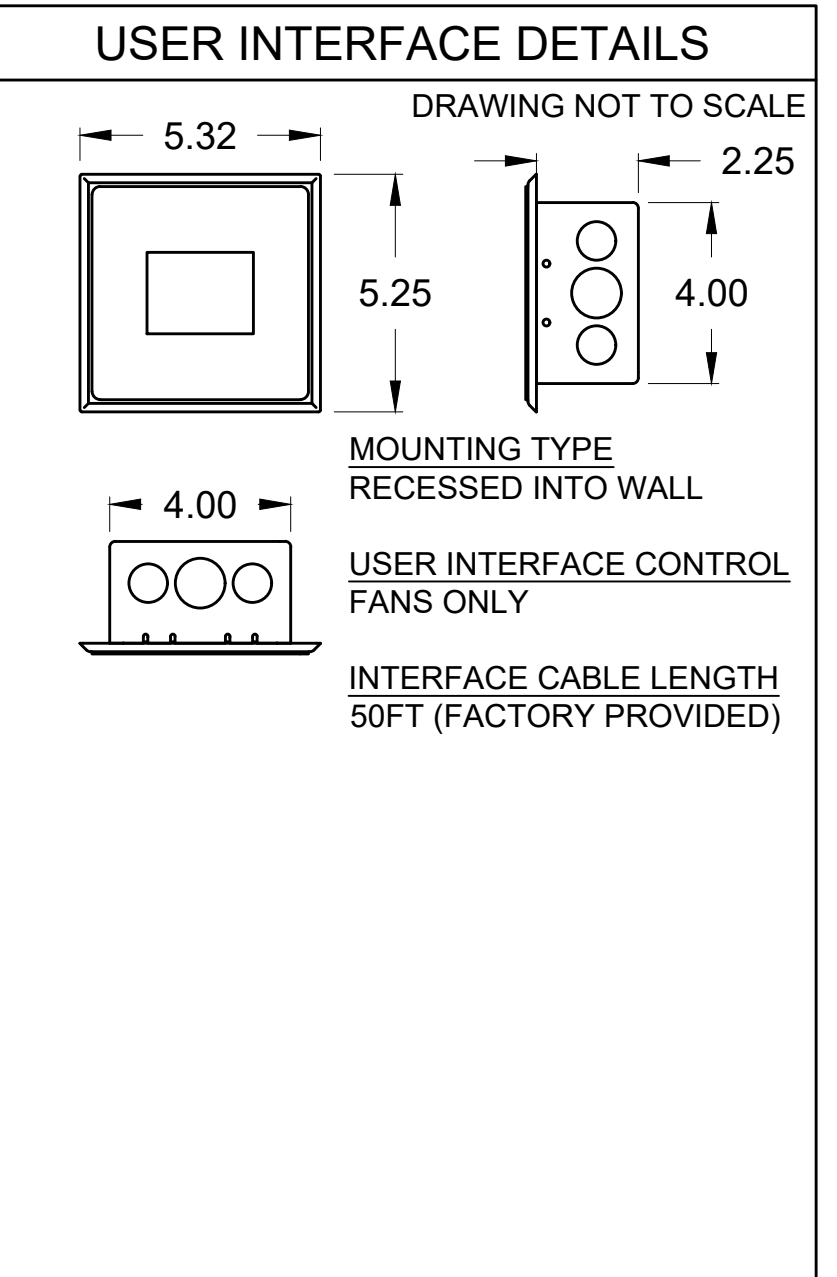
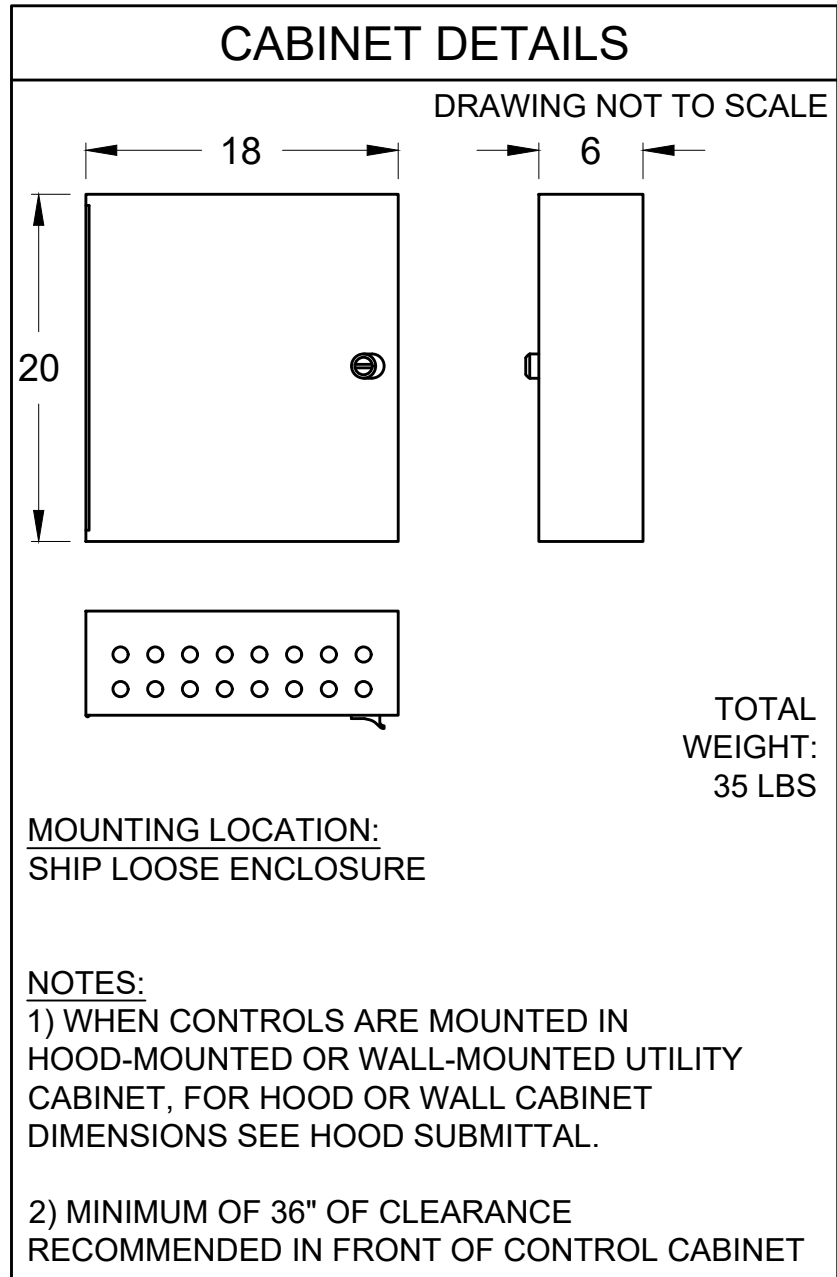
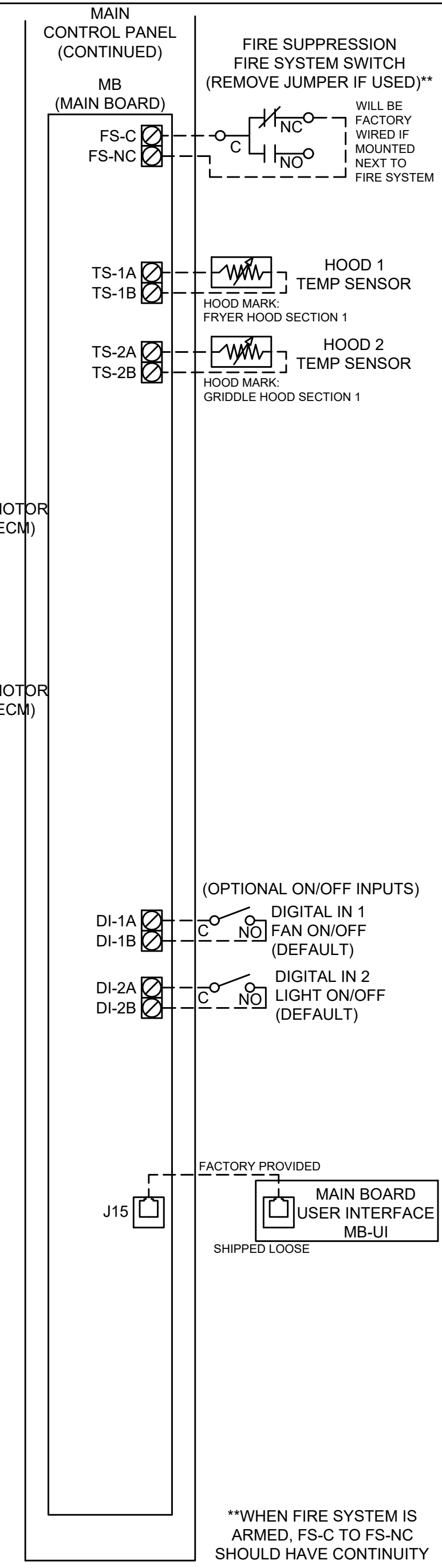
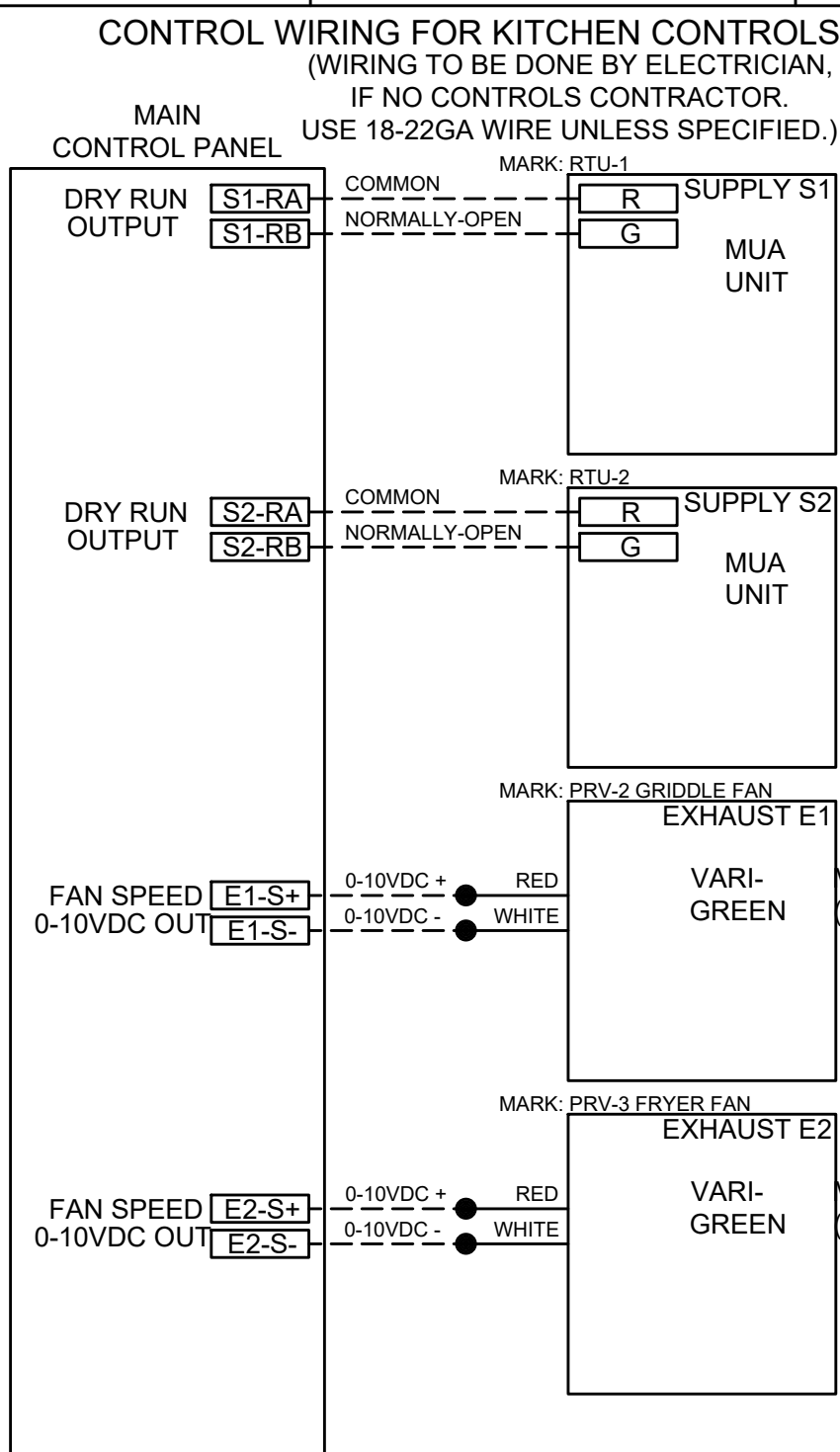
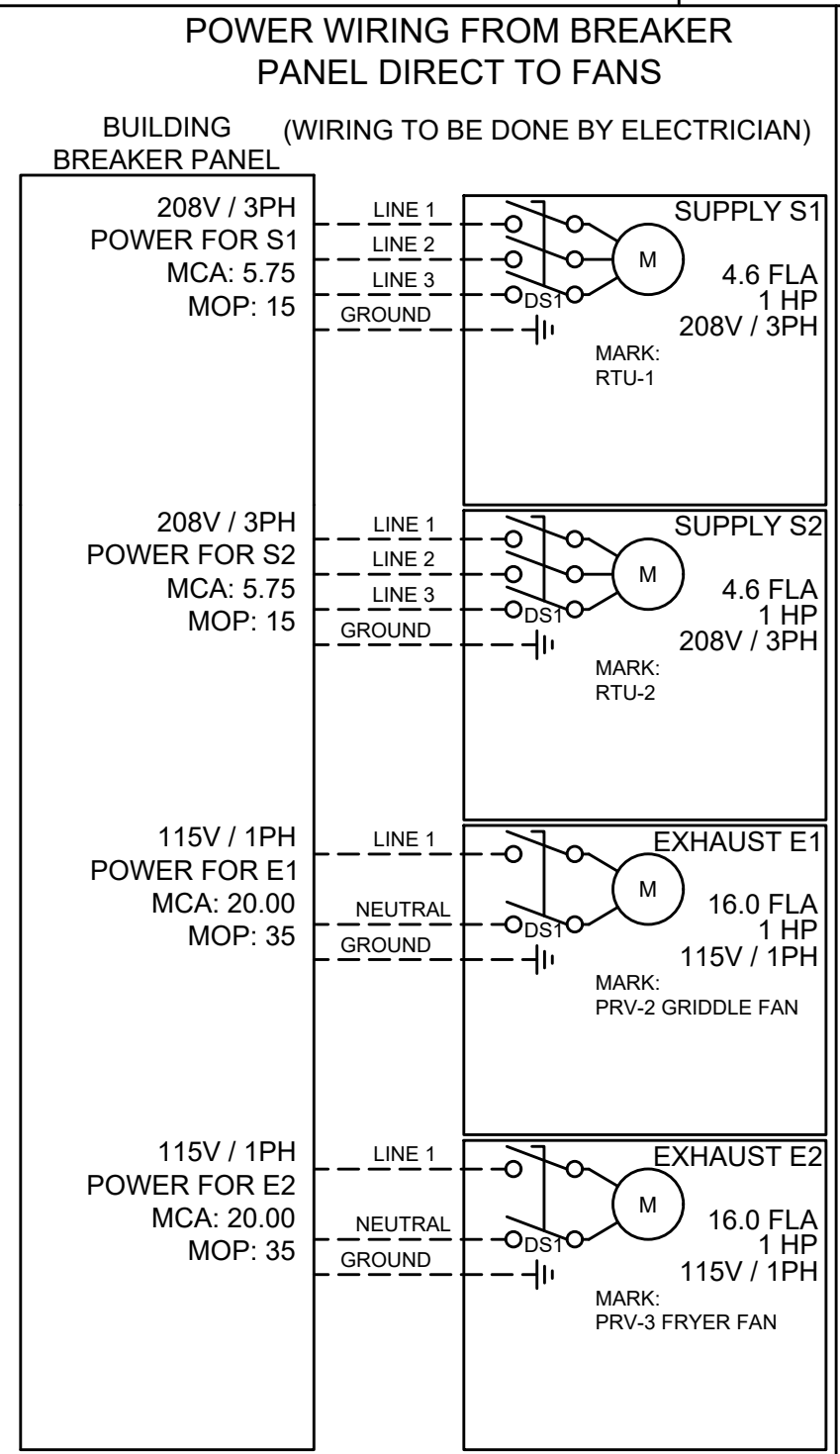
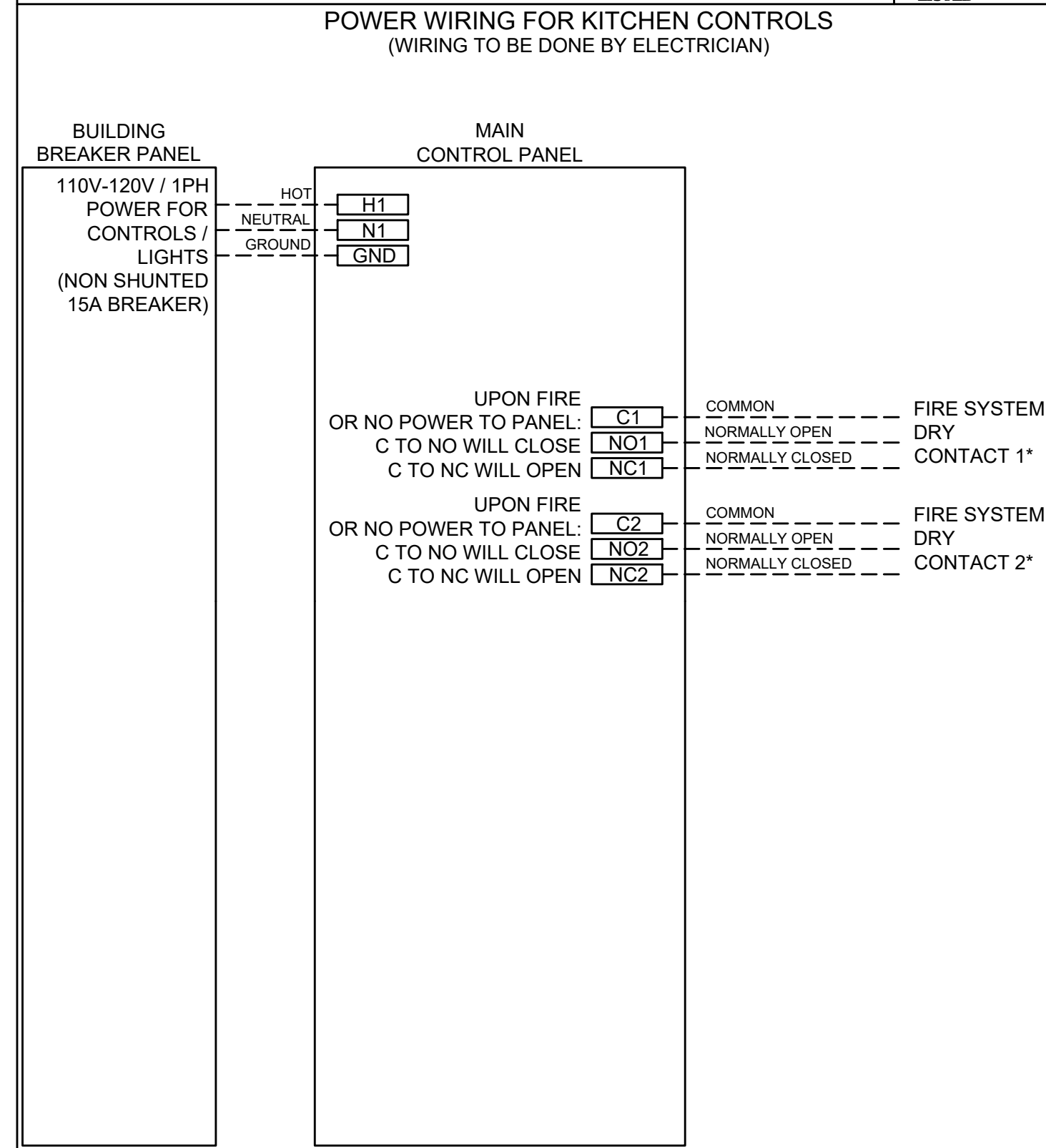
**ATTENTION**  
L'APPAREIL DOIT ÊTRE MIS À LA TERRE CONFORMÉMENT AU CODE C.E. L'ALIMENTATION DOIT ÊTRE COUPEE DURANT L'ENTRETIEN.

COMMERCIAL APPLIANCE OUTLET CENTER  
 ELECTRICAL RATINGS: 110-240V, 1PHASE, 50-60HZ, 15A  
 BASE FILE #E200616, ML FILE #E313951

PRG VERSION: V4  
 FIELD WIRED (CÂBLE LOCAL) -----  
 FACTORY WIRED (CÂBLE À L'USINE) -----

NE PAS RETIRER CES DESSINS DE CET ÉQUIPEMENT. SAUF INDICATION CONTRAIRE, UTILISER DES CONDUCTEURS EN CUIVRE CLASSÉS 90 °C. SERRER LES BORNES DE COMMANDE ET DE MISE À LA TERRE À 8 LB-PO. SERRER LES COSSÉS/SS D'ALIMENTATION AUX COUPLES INDICQUÉS POUR LE COMPOSANT. SERRER LES BORNES À VIS DE LA CARTE DE COMMANDE À 3.5 LB-PO. LA RÉSISTANCE DU CÂBLAGE DE COMMANDE LOCAL NE DOIT PAS DÉPASSER 0.75 OHM. POUR PLUS D'INFORMATION, CONSULTER LE MANUEL OU APPELER 1-800-371-8888

WIRING DIAGRAM CODE: #####  
 JOB NAME: CULVERS - STOUGHTON, WI REMODEL  
 MODEL: XKC-CV-S-22-2-1-0  
 SERIAL NUMBER: WDSN#  
 MARK: CONTROLS



ZONE CONFIGURATION

ZONE #	ZONE	ROOM TEMP
1	Z1	PRESET
2	Z2	PRESET

HOOD CONFIGURATION

HOOD #	HOOD	HOOD MARK	ZONE	EXHAUST	SUPPLY	MB-TEMP SENSORS	HCB
1	H1	FRYER HOOD SECTION 1	Z1	E2	S1	TS1	NO
2	H2	GRIDDLE HOOD SECTION 1	Z2	E1	S2	TS2	NO

FAN CONFIGURATION

FAN #	TYPE	FAN	FAN MARK	ZONE	MIN CFM	MAX CFM	MODBUS VFD	VFD ADDRESS	MIN FREQ	MAX FREQ	MIN VDC	MAX VDC
1	SUPPLY	S1	RTU-1	Z1	-	1500	NO	-	-	-	-	10.0
2	SUPPLY	S2	RTU-2	Z2	-	1500	NO	-	-	-	-	10.0
3	EXHAUST	E1	PRV-2 GRIDDLE FAN	Z2	-	1497	NO	-	-	-	-	10.0
4	EXHAUST	E2	PRV-3 FRYER FAN	Z1	-	1500	NO	-	-	-	-	10.0

WIRING DIAGRAM CODE: #####  
 JOB NAME: CULVERS - STOUGHTON, WI REMODEL  
 MODEL: XKC-CV-S-22-2-1-0  
 SERIAL NUMBER: WDSN#  
 MARK: CONTROLS  
 DOC NUMBER: ##### REV: #####

DEFAULT SETTINGS / PARAMÈTRES PAR DÉFAUT

FACTORY SETTINGS  
 TYPE: CV  
 CONFIGURATION: STANDARD  
 ZONES: 2  
 HOODS: 2  
 SUMP: 0  
 EXHAUST FANS: 2  
 SUPPLY FANS: 2  
 MB ROOM SENSOR: NO  
 MB TEMP SENSORS: 2  
 HIGH TEMP FAULT: NO  
 FREEZE PROTECTION: YES  
 GAS RESET: NO  
 FAN PROVING: NO  
 BMS: NONE

ZONE SETTINGS  
 SEE ZONE CONFIGURATION IN TABLE ON LEFT

HOOD SETTINGS  
 SEE HOOD CONFIGURATION IN TABLE ON LEFT

EXHAUST FAN SETTINGS  
 SEE FAN CONFIGURATION IN TABLE ON LEFT

SUPPLY FAN SETTINGS  
 SEE FAN CONFIGURATION IN TABLE ON LEFT

SENSOR SETTINGS  
 SEE HOOD CONFIGURATION IN TABLE ON LEFT

USER INTERFACE SETTINGS (MB)  
 FAN & LIGHT BUTTONS: SHOW FANS ONLY

USER INTERFACE SETTINGS (HCB)  
 NA

GENERAL SETTINGS  
 TIME ZONE: CENTRAL DAYLIGHT (DEFAULT)

FIRE/FAULT SETTINGS  
 EXHAUST DURING FIRE: MAX  
 SUPPLY DURING FIRE: OFF  
 LIGHTS DURING FIRE: OFF

BMS SETTINGS  
 NA

PRG VERSION: V4

