

Report By:

National TAB
1329 E. KEMPER ROAD
SUITE 4210
CINCINNATI, OH 45246



Report: TAB

Function: Test, Adjust, & Balance

Date: 10/10/2025

Completed By: National TAB

PROJECT

10-06-25 QT #0598 GRETNA, NE

11105 SAPP BROTHERS DRIVE

GRETNA, NE

Client

QUIKTRIP

4705 SOUTH 129TH EAST AVENUE

TULSA, OK 74134

National TAB

Project: 10-06-25 QT #0598 GRETNA, NE

Table Of Contents

Section	Page #
AHU/RTU	3
Diffuser Supply (GRD)	11
FAN - Exhaust	12
Kitchen Hood Type I	18



National TAB

Project: 10-06-25 QT #0598 GRETN, NE

System/Unit: AHU/RTU

Asset: RT-1

AREA:SALES FLOOR

Unit Data		
	Design	Actual
MFG	NA	AAON
Serial Num	-	201810-ANEL17952
Model Num	NA	RN-015-8-0-EAOA-152
Type	-	RTU
Configuration	-	VERTICAL
Num OA Filters 1	-	1
OA Filter Size 1	-	22X45"
Num Final Filter 1	-	4
Final Filter Size 1	-	20X25X2

Motor Data		
	Design	Actual
Motor MFG	-	NA
Frame	-	NA
Horsepower	-	5.0
Motor Rpm	-	1760
Phase	-	3
Rated Voltage	-	208
Rated Amperage	-	16.7

Drive Data	
	Actual
Motor Sheave Size	DD
Motor Bore Size	DD
Motor Sheave SetPt	DD
Fan Sheave Size	DD
Fan Sheave Bore	DD
Belt CL Distance	DD
Num of Belts	DD
Belt Size	DD
Belt Alignment	DD

Test Data		
	Design	Actual
SF CFM	5000	5055
SF RPM	-	NA
RA CFM	4135	4202
OA CFM	865	853
RL Voltage	-	206
RL Amperage	-	10.85
SF Rotation	-	COUNTERCLOCKWISE
SF System SetPt	-	73% (43.6 Hz)
RA Damper Position	-	3" OPEN
Min OA Damper Position	-	0.625" OPEN (46%)
Min OA Damper Type	-	MOTORIZED
OA Enthalpy Setpt	-	NL

Performance Data		
	Design	Actual
MA Plenum SP	-	-0.56"
Fan Suction SP	-	-1.05"
Fan Discharge SP	-	0.56"
Total ESP	-	1.12"
Fan Total SP	-	1.61"

General	
	Actual
Fan Rotation Correct	YES
Unit Filters Clean	NO
Condensate Drain Installed	YES

Completed By: Kalen Kemp on 10/10/2025

Notes:

- DIFFUSER 1-11 IS NOT CONNECTED TO BRANCH DUCT. CLOSED DAMPER TO GET TOTAL AIRFLOW AMOUNT.
- HOOD OFF OA: 413
- HOOD OFF DAMPER POS: 30% (0.0625" OPEN)

Written By: Kalen Kemp on 10/09/2025

Unit Data - PHOTO LOG



10/10/2025



10/10/2025



National TAB

Project: 10-06-25 QT #0598 GRETNA, NE

System/Unit: AHU/RTU

Asset: RT-2

AREA:SALES FLOOR

Unit Data		
	Design	Actual
MFG	NA	AAON
Serial Num	-	201810-ANEL17953
Model Num	NA	RN-015-8-0-EA0A-152
Type	-	RTU
Configuration	-	VERTICAL
Num OA Filters 1	-	1
OA Filter Size 1	-	22.25X45
Num Final Filter 1	-	4
Final Filter Size 1	-	20X25X2

Motor Data		
	Design	Actual
Motor MFG	-	NA
Frame	-	NA
Horsepower	-	5.0
Motor Rpm	-	1760
Phase	-	3
Rated Voltage	-	208
Rated Amperage	-	16.7

Drive Data	
	Actual
Motor Sheave Size	DD
Motor Bore Size	DD
Motor Sheave SetPt	DD
Fan Sheave Size	DD
Fan Sheave Bore	DD
Belt CL Distance	DD
Num of Belts	DD
Belt Size	DD
Belt Alignment	DD

Test Data		
	Design	Actual
SF CFM	5000	5082
SF RPM	-	NA
RA CFM	4135	4255
OA CFM	865	827
RL Voltage	-	205
RL Amperage	-	10.82
SF Rotation	-	COUNTERCLOCKWISE
SF System SetPt	-	75% (44.8 Hz)
RA Damper Position	-	3.125" OPEN
Min OA Damper Position	-	46% (0.5" OPEN)
Min OA Damper Type	-	MOTORIZED
OA Enthalpy Setpt	-	NL

Performance Data		
	Design	Actual
MA Plenum SP	-	-0.66"
Fan Suction SP	-	-1.24"
Fan Discharge SP	-	0.40"
Total ESP	-	1.06"
Fan Total SP	-	1.64"

General	
	Actual
Fan Rotation Correct	YES
Unit Filters Clean	NO
Condensate Drain Installed	YES

Notes:

- COULD NOT ACCESS DIFFUSER 1-10 FOR AIRFLOW READING. CLOSED DAMPER TO GET TOTAL AIRFLOW READING THEN OPENED BACK TO INITIAL POSITION
- HOOD OFF OA: 438 CFM
- HOOD OFF DAMPER POS: 30% (0.0625" OPEN)

Written By: Kalen Kemp on 10/09/2025

Unit Data - PHOTO LOG



10/10/2025



10/10/2025



National TAB

Project: 10-06-25 QT #0598 GRETNA, NE

System/Unit: AHU/RTU

Asset: RT-3

AREA:BOH/DOCK

Unit Data		
	Design	Actual
MFG	NA	AAON
Serial Num	-	201810-AYEF03857
Model Num	NA	RN-006-8-V-EA09-132
Type	-	RTU
Configuration	-	VERTICAL
Num OA Filters 1	-	1
OA Filter Size 1	-	12X17
Num Final Filter 1	-	2
Final Filter Size 1	-	20X20X2

Motor Data		
	Design	Actual
Motor MFG	-	NA
Frame	-	NA
Horsepower	-	2.0
Motor Rpm	-	1760
Phase	-	3
Rated Voltage	-	208
Rated Amperage	-	7.5

Drive Data	
	Actual
Motor Sheave Size	DD
Motor Bore Size	DD
Motor Sheave SetPt	DD
Fan Sheave Size	DD
Fan Sheave Bore	DD
Belt CL Distance	DD
Num of Belts	DD
Belt Size	DD
Belt Alignment	DD

Test Data		
	Design	Actual
SF CFM	1800	1820
SF RPM	-	NA
RA CFM	1640	1651
OA CFM	160	169
RL Voltage	-	206
RL Amperage	-	5.59
SF Rotation	-	COUNTERCLOCKWISE
SF System SetPt	-	105% (62.9 Hz)
RA Damper Position	-	4.5" OPEN
Min OA Damper Position	-	0.125" OPEN (46%)
Min OA Damper Type	-	MOTORIZED
OA Enthalpy Setpt	-	NL

Performance Data		
	Design	Actual
MA Plenum SP	-	-1.82"
Fan Suction SP	-	-2.19"
Fan Discharge SP	-	0.89"
Total ESP	-	2.71"
Fan Total SP	-	3.08"

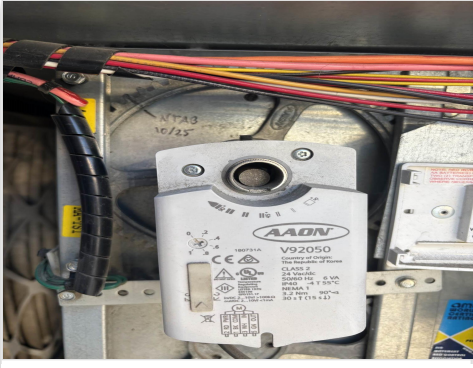
General	
	Actual
Fan Rotation Correct	YES
Unit Filters Clean	YES
Condensate Drain Installed	YES

Completed By: Kalen Kemp on 10/10/2025

- Notes:
- ONLY 1 OA SETPOINT FOR BOH AREA
 - UNIT 4 IN EMERSON CONTROLS

Written By: Kalen Kemp on 10/10/2025

Unit Data - PHOTO LOG



10/10/2025



10/10/2025



National TAB

Project: 10-06-25 QT #0598 GRETNA, NE

System/Unit: AHU/RTU

Asset: RT-4

AREA:SUPPORT SERVICE

Unit Data		
	Design	Actual
MFG	NA	AAON
Serial Num	-	201810-ANEK17951
Model Num	NA	RN-013-8-0-EA0A
Type	-	RTU
Configuration	-	VERTICAL
Num OA Filters 1	-	1
OA Filter Size 1	-	22.5X45
Num Final Filter 1	-	4
Final Filter Size 1	-	20X25X2

Motor Data		
	Design	Actual
Motor MFG	-	NA
Frame	-	NA
Horsepower	-	3.0
Motor Rpm	-	1760
Phase	-	3
Rated Voltage	-	208
Rated Amperage	-	10.6

Drive Data	
	Actual
Motor Sheave Size	DD
Motor Bore Size	DD
Motor Sheave SetPt	DD
Fan Sheave Size	DD
Fan Sheave Bore	DD
Belt CL Distance	DD
Num of Belts	DD
Belt Size	DD
Belt Alignment	DD

Test Data		
	Design	Actual
SF CFM	4200	4067
SF RPM	-	NA
RA CFM	3335	3209
OA CFM	865	858
RL Voltage	-	206
RL Amperage	-	7.57
SF Rotation	-	COUNTERCLOCKWISE
SF System SetPt	-	61% (36.6 Hz)
RA Damper Position	-	2.625" OPEN
Min OA Damper Position	-	0.875" OPEN (46%)
Min OA Damper Type	-	MOTORIZED
OA Enthalpy Setpt	-	NL

Performance Data		
	Design	Actual
MA Plenum SP	-	-0.42"
Fan Suction SP	-	-0.79"
Fan Discharge SP	-	0.34"
Total ESP	-	0.76"
Fan Total SP	-	1.13"

General	
	Actual
Fan Rotation Correct	YES
Unit Filters Clean	NO
Condensate Drain Installed	YES

Completed By: Kalen Kemp on 10/10/2025

- Notes:
- DAMPER ACTUATOR UNRESPONSIVE. OA SET MANUALLY. LEFT AT HOODS ON POSITION
 - HOOD OFF OA: 422 CFM
 - HOOD OFF DAMPER POS: 0.25" OPEN
 - BROKEN DAMPER HANDLE FOR DIFFUSER 4-3. UNABLE TO BALANCE SYSTEM.

Written By: Kalen Kemp on 10/10/2025

Unit Data - PHOTO LOG



10/10/2025



10/10/2025



National TAB

Project:10-06-25 QT #0598 GRETN, NE

Diffuser Supply (GRD)

RT-1/SALES FLOOR

Asset									
Asset Name	Location	Type	Size	DESIGN CFM	AK	CFM(1)	CFM(2)	FINAL CFM	% to design
SGRD1	ENTRANCE	ES	10"	350	1.0	325	377	377	107.7
SGRD2	SALES	ES	10"	350	1.0	450	530	530	151.4
SGRD3	SALES	ES	8"	330	1.0	279	339	339	102.7
SGRD4	SALES	ES	8"	335	1.0	249	311	311	92.8
SGRD5	SALES	ES	8"	335	1.0	360	421	421	125.7
SGRD6	SALES	ES	8"	450	1.0	178	199	199	44.2
SGRD7	SALES	ES	12"	650	1.0	547	634	634	97.5
SGRD8	SALES	SI	12"	650	1.0	356	412	412	63.4
SGRD9	SALES	SI	12"	650	1.0	659	770	770	118.5
SGRD10	SIDE ENTRANCE	ES	10"	400	1.0	625	742	742	185.5
SGRD11	ELECTRICAL	ES	8"	250	1.0	39	0	0	0.0
SGRD12	WOMEN'S RR	ES	10"	250	1.0	271	320	320	128.0
Total				5000		4338	5055	5055	101.1%

RT-2/SALES FLOOR

Asset									
Asset Name	Location	Type	Size	DESIGN CFM	AK	CFM(1)	CFM(2)	FINAL CFM	% to design
SGRD1	ENTRANCE	ES	10"	350	1.0	299	389	389	111.1
SGRD2	SALES	ES	10"	350	1.0	341	387	387	110.6
SGRD3	SALES	ES	8"	330	1.0	417	437	437	132.4
SGRD4	SALES	ES	8"	335	1.0	235	319	319	95.2
SGRD5	SALES	ES	8"	335	1.0	170	195	195	58.2
SGRD6	SALES	ES	10"	300	1.0	447	548	548	182.7
SGRD7	SALES	ES	12"	650	1.0	593	717	717	110.3
SGRD8	SALES	ES	12"	650	1.0	550	661	661	101.7
SGRD9	SALES	ES	12"	650	1.0	375	451	451	69.4
SGRD10	SIDE ENTRANCE	ES	10"	400	1.0	0		0	0.0
SGRD11	TEA AREA	ES	8"	300	1.0	365	444	444	148.0
SGRD12	MEN'S RR	ES	10"	350	1.0	423	534	534	152.6
Total				5000		4215	5082	5082	101.64%

RT-3/BOH/DOCK

Asset									
Asset Name	Location	Type	Size	DESIGN CFM	AK	CFM(1)	CFM(2)	FINAL CFM	% to design
SGRD1	ELECTRICAL	ES	10"	450	1.0	109	330	330	73.3
SGRD2	DOCK	ES	10"	450	1.0	150	491	491	109.1
SGRD3	DOCK	ES	10"	450	1.0	167	484	484	107.6
SGRD4	DOCK	ES	10"	450	1.0	158	515	515	114.4
Total				1800		584	1820	1820	101.11%

RT-4/SUPPORT SERVICE

Asset									
Asset Name	Location	Type	Size	DESIGN CFM	AK	CFM(1)	CFM(2)	FINAL CFM	% to design
SGRD1	SERVICE COUNTER	SI	14"	875	1.0	621	547		-
SGRD2	SERVICE COUNTER	SI	14"	875	1.0	1293	1162		-
SGRD3	SERVICE COUNTER	SI	14"	875	1.0	1178	1065		-
SGRD4	SERVICE COUNTER	SI	14"	875	1.0	741	663		-
SGRD5	SALES	ES	12"	700	1.0	710	630		-
Total				4200		4543	4067	0	0%



National TAB

Project: 10-06-25 QT #0598 GRETN, NE

System/Unit: FAN - Exhaust

Asset: EF1

AREA: MEN'S RR

Unit Data		
	Design	Actual
MFG	NA	CAPTIVE-AIRE
Model Num	NA	DR33HFA
Serial Num	-	NL (JOB #: 3546769)
Type	-	DOWNBLAST
Configuration	-	VERTICAL

Motor Data		
	Design	Actual
Motor MFG	-	HSSA
Frame	-	NL
Horsepower	-	0.167
Motor Rpm	-	1625
Phase	-	1
Voltage (rated)	-	115/230
Amperage (rated)	-	1.9/0.96
Service Factor	-	NL

Test Data		
	Design	Actual
CFM	670	726
Fan RPM	-	NA
Fan Rotation	-	COUNTERCLOCKWISE
Motor RPM	-	NA
System SetPt	-	HIGH SPEED
RL Voltage	-	114
RL Amperage	-	0.99
Total ESP	-	0.32"
Fan Inlet SP	-	-0.32"
Fan Discharge SP	-	ATM

Completed By: Kalen Kemp on 10/10/2025

Unit Data - PHOTO LOG



10/10/2025



National TAB

Project: 10-06-25 QT #0598 GRETNA, NE

System/Unit: FAN - Exhaust

Asset: EF2

AREA:WOMEN'S RR

Unit Data		
	Design	Actual
MFG	NA	CAPTIVE-AIRE
Model Num	NA	DR33HFA
Serial Num	-	NL (JOB #: 3546769)
Type	-	DOWNBLAST
Configuration	-	VERTICAL

Motor Data		
	Design	Actual
Motor MFG	-	HSSA
Frame	-	48Y
Horsepower	-	0.50
Motor Rpm	-	1625
Phase	-	1
Voltage (rated)	-	115/230
Amperage (rated)	-	3.6/1.9
Service Factor	-	1.0

Test Data		
	Design	Actual
CFM	350	N/A
Fan RPM	-	N/A
Fan Rotation	-	N/A
Motor RPM	-	N/A
System SetPt	-	N/A
RL Voltage	-	N/A
RL Amperage	-	N/A
Total ESP	-	N/A
Fan Inlet SP	-	N/A
Fan Discharge SP	-	ATM

Completed By: Kalen Kemp on 10/10/2025

Notes:
-NO POWER. FAN NOT RUNNING

Written By: Kalen Kemp on 10/09/2025

Unit Data - PHOTO LOG



10/10/2025



National TAB

Project: 10-06-25 QT #0598 GRETNA, NE

System/Unit: FAN - Exhaust

Asset: EF3

AREA: KITCHEN HD

Unit Data		
	Design	Actual
MFG	NA	CAPTIVEAIRE
Model Num	NA	DU50HFA
Serial Num	-	NL (JOB #: 7619798)
Type	UPBLAST	UPBLAST
Configuration	VERTICAL	VERTICAL

Motor Data		
	Design	Actual
Motor MFG	-	TELCO GREEN
Frame	-	NL
Horsepower	1/2	0.50
Motor Rpm	-	1800
Phase	-	1
Voltage (rated)	-	208
Amperage (rated)	-	3.8
Service Factor	-	NL

Test Data		
	Design	Actual
CFM	1350	1348
Fan RPM	-	1620
Fan Rotation	-	COUNTERCLOCKWISE
Motor RPM	-	1620
System SetPt	-	90% (54 Hz)
RL Voltage	-	205
RL Amperage	-	2.08
Total ESP	-	0.75"
Fan Inlet SP	-	-0.75"
Fan Discharge SP	-	ATM

Completed By: Kalen Kemp on 10/10/2025

Notes:

- MAX AIRFLOW CHECK: 1697 CFM
- MAX AIRFLOW FREQUENCY: 68 Hz
- MIN AIRFLOW CHECK: 786 CFM
- MIN AIRFLOW FREQUENCY: 32 Hz
- GREASE DUCT DOES NOT RUN ALL THE WAY UP FLUSH TO FAN INLET.

Written By: Kalen Kemp on 10/10/2025

Unit Data - PHOTO LOG



10/10/2025



National TAB

Project: 10-06-25 QT #0598 GRETN, NE

System/Unit: Kitchen Hood Type I

Asset: HD1

AREA:GRIDDLE

Unit Data		
	Design	Actual
MFG	CAPTIVEAIRE	CAPTIVEAIRE
Model Num	6030ND-2-F	6030ND-2-F
Job / Serial Num	-	7619798
Type	-	TYPE I - CANOPY
Hood length	-	108"
Hood Width	-	'60

Test Data Exhaust		
	Design	Actual
Filter Type	-	CAPTRATE-SOLO
Filter Size 1	-	16x20"
Filter Qty 1	-	6
Filter AK factor size 1	-	2.08
Filter Total AK Area	-	12.48
Filter1 FPM	-	97
Filter2 FPM	-	107
Filter3 FPM	-	126
Filter4 FPM	-	109
Filter5 FPM	-	109
Filter6 FPM	-	102
Filter Ave FPM(corr)	-	108
CFM	1350	1348

Cooking Equipment	
	Actual
Item 1	FRYER (2)
Item 2	PIZZA OVEN (2)

Completed By: Kalen Kemp on 10/10/2025

Unit Data - PHOTO LOG



10/10/2025