



KROGER
SW-451

RENOVATION
(EXPANSION)

1060 N MAIN ST
EULESS, TX 76039

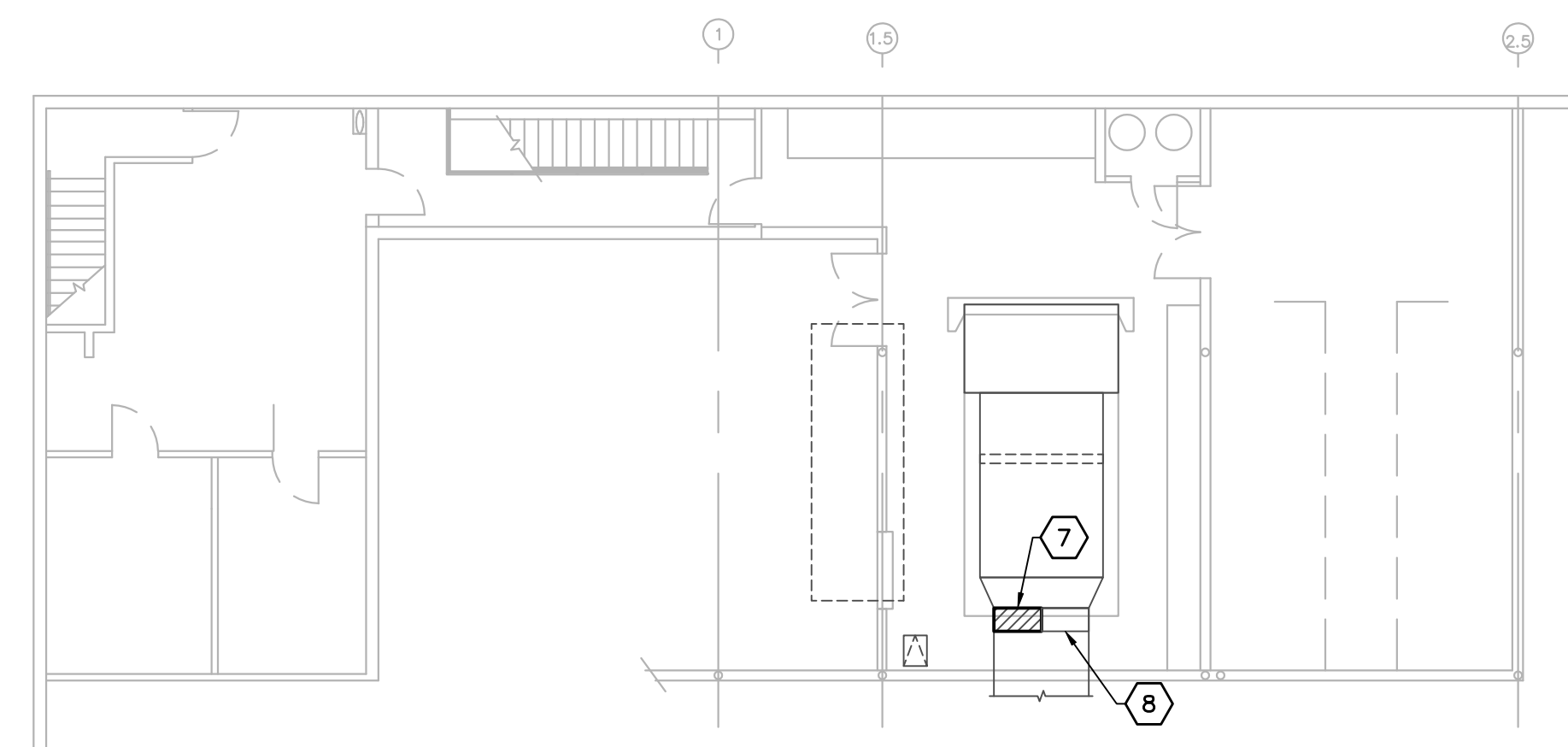
A DEVELOPMENT OF:
KROGER

MECHANICAL GENERAL NOTES

1. REFER TO HEATING, VENTILATING AND AIR CONDITIONING SPECIFICATION AND GENERAL CONDITIONS FOR ADDITIONAL REQUIREMENTS.
2. ALL DIFFUSERS AND CEILING GRILLES SHALL BE COORDINATED WITH LAY-IN CEILING GRID AND PROVIDED BY MECHANICAL CONTRACTOR. RE: SCHEDULE ON SHEET M6.1.
3. PROVIDE BALANCING DAMPERS AT POINTS ON SUPPLY, RETURN, AND EXHAUST SYSTEMS WHERE BRANCHES LEAD FROM LARGER DUCTS OR AS REQUIRED FOR AIR BALANCING. INSTALL AT A MINIMUM OF TWO DUCT WIDTHS FROM BRANCH TAKEOFF.
4. PROVIDE TURNING VANES IN ALL RECTANGULAR 90 DEGREE WELDED ELBOWS.
5. EXISTING DIFFUSERS TO REMAIN. IT IS THE CONTRACTOR'S RESPONSIBILITY TO CLEAN ALL EXISTING DIFFUSERS AND RETURN GRILLES THAT ARE NOT REPLACED.

MECHANICAL KEYED NOTES

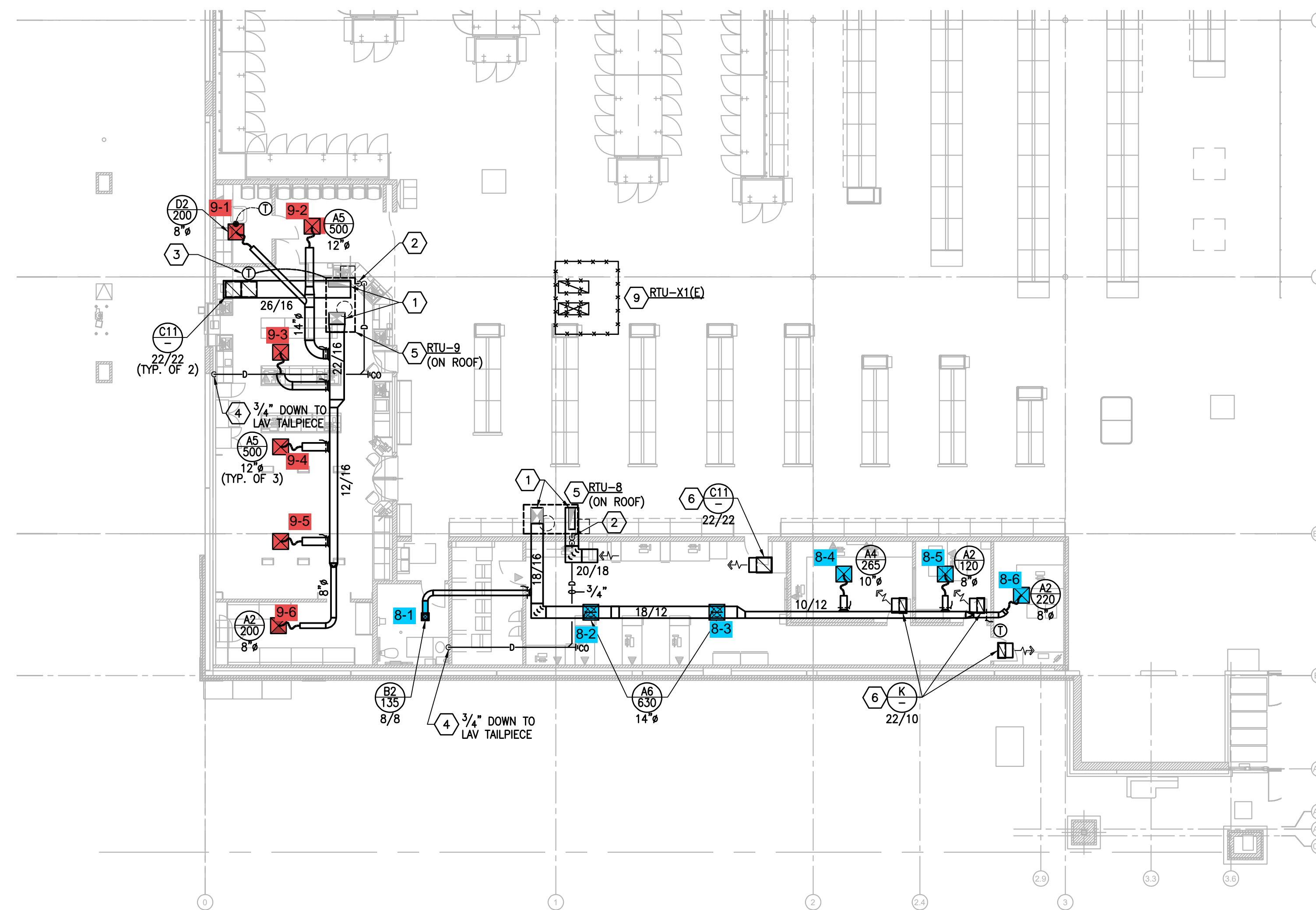
1. DUCT UP THRU ROOF. PROVIDE TRANSITION TO UNIT/FAN FULL SIZE IN DUCT RISER.
2. CONDENSATE PIPING DOWN THRU ROOF INTO JOIST SPACE.
3. TEMPERATURE SENSOR WITH SLIDE BAR ADJUST OVERHUNG TO PERMIT ADJUSTMENT FOR INSIDE PHARMACY - PNE18 40534. RE: EM DRAWINGS FOR MORE INFORMATION.
4. CONDENSATE PIPING TURN DOWN TO APPROVED INDIRECT WASTE RECEPTOR BELOW. RE: P1.1 FOR DRAIN LOCATIONS.
5. PACKAGED ROOFTOP UNIT - RE: DETAILS HSD-9A, HSD-9B, HSD-9RO AND HSD-10 ON SHEET M6.1 FOR MORE INFORMATION.
6. RETURN AIR GRILLE WITH ACOUSTICALLY LINED SHEETMETAL BOOT FOR SOUND ATTENUATION. RE: DETAIL 7/M5.2 FOR MORE INFORMATION.
7. PROVIDE TRANE MODEL GLND-022-ADG1000M DUCT FURNACE TO REPLACE EXISTING. RECONNECT TO EXISTING FLUE THRU ROOF. COORDINATE CONTROLS WITH EMS AND OWNER.
8. EXISTING DUCT FURNACE TO REMAIN. PROTECT DURING CONSTRUCTION.
9. REMOVE AND DISCARD EXISTING ROOFTOP UNIT AND ASSOCIATED CURB. REMOVE AND DISCARD ALL ASSOCIATED DUCTWORK, AIR DEVICES, PIPING AND CONTROLS. PATCH ROOF PER ARCHITECTS DIRECTION.



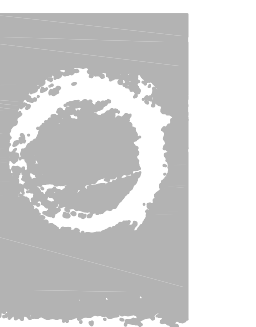
01 ALTERNATE HVAC PLAN - MECHANICAL MEZZANINE
SCALE: 1/32"=1'-0"

ISSUE LOG

NO.	DESCRIPTION	DATE
	ISSUE FOR BID & PERMIT	09.09.2015
▲	ADDENDUM 2	09.30.2015
▲	ADDENDUM 3	10.05.2015
▲	CITY COMMENTS	02.24.2016
▲	DESIGN REVISIONS	03.18.2016
▲	COORDINATION	03.30.2016
▲	FINAL BID SET	04.08.2016
▲	COORDINATION	04.18.2016
▲	ISSUED FOR CONSTRUCTION	05.20.2016



01 ALTERNATE HVAC PLAN - PHARMACY AND OFFICE AREAS
SCALE: 1/32"=1'-0"



O'BRIEN

5310 HARVEST HILL RD.
SUITE 136
DALLAS, TEXAS 75230
972.788.1010
www.obrienarch.com



DATE: 09.09.2015 JOB: 14040 SCALE: AS NOTED

SHEET NO.

M1.2
ALTERNATE
HVAC PLAN



Houston | Dallas/Ft. Worth | Baton Rouge

1425 Greenway Drive, Suite 640
Irving, Texas 75038
972.812.1270 | Registration No. F-4111

KMES Project No. 862150947

COPYRIGHT © 2015 O'BRIEN THESE DRAWINGS, OR PARTS THEREOF, MAY NOT BE REPRODUCED IN ANY FORM BY ANY METHOD, FOR ANY PURPOSE, WITHOUT WRITTEN CONSENT FROM O'BRIEN