

Report By:

National TAB
1329 E Kemper Rd, Ste 4210
Cincinnati, OH 45246



Report: Test and Balance

Date: 3/27/2017

PROJECT

KROGER 034-451 EULESS, TX (EXPANSION REMODEL)

1060 N MAIN ST
EULESS, TX 76039

Client

Kroger Division 034
1331 E. Airport Frwy
Irving, TX 75062

Powered by



FACILIBUILD

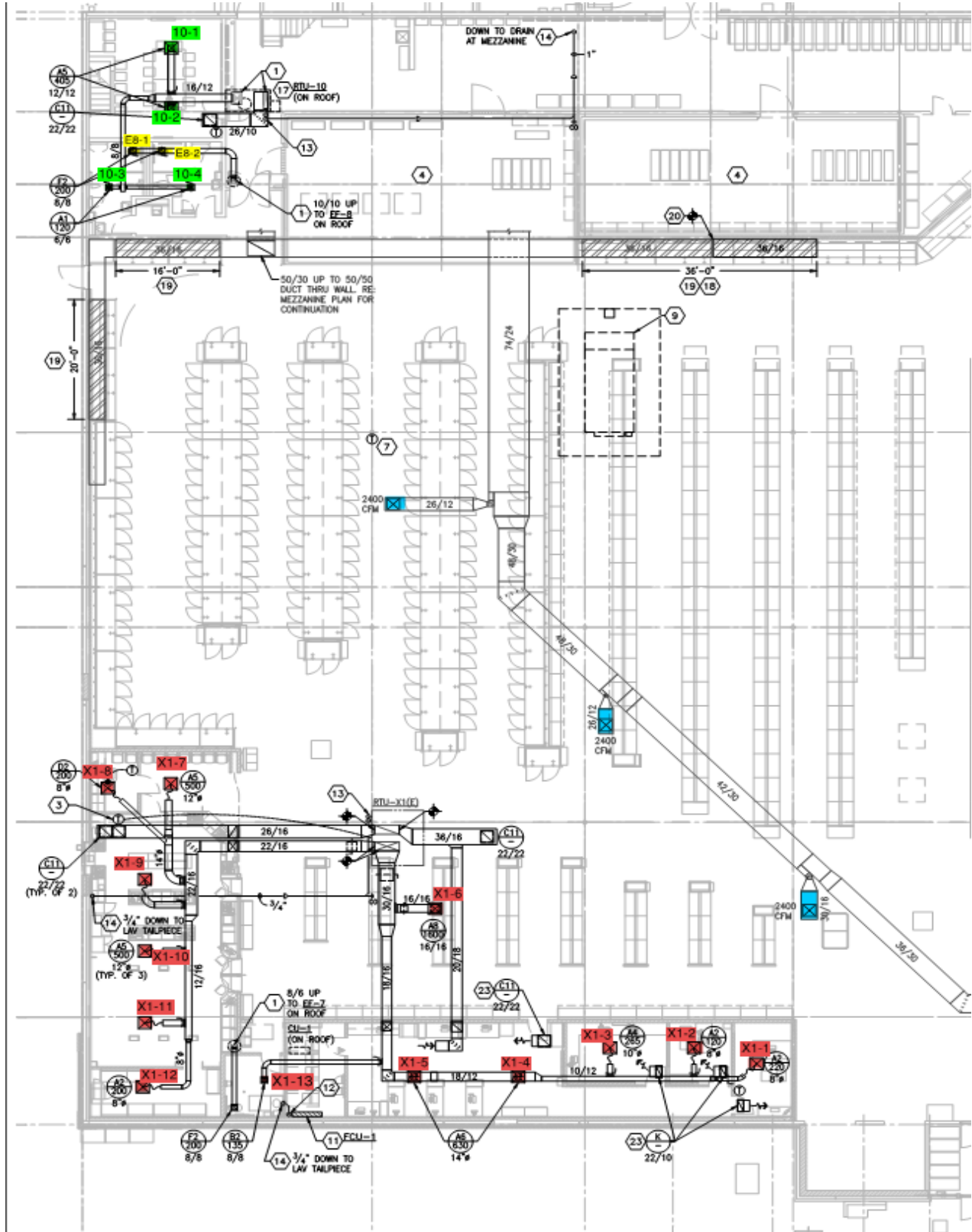
www.facilibuild.com

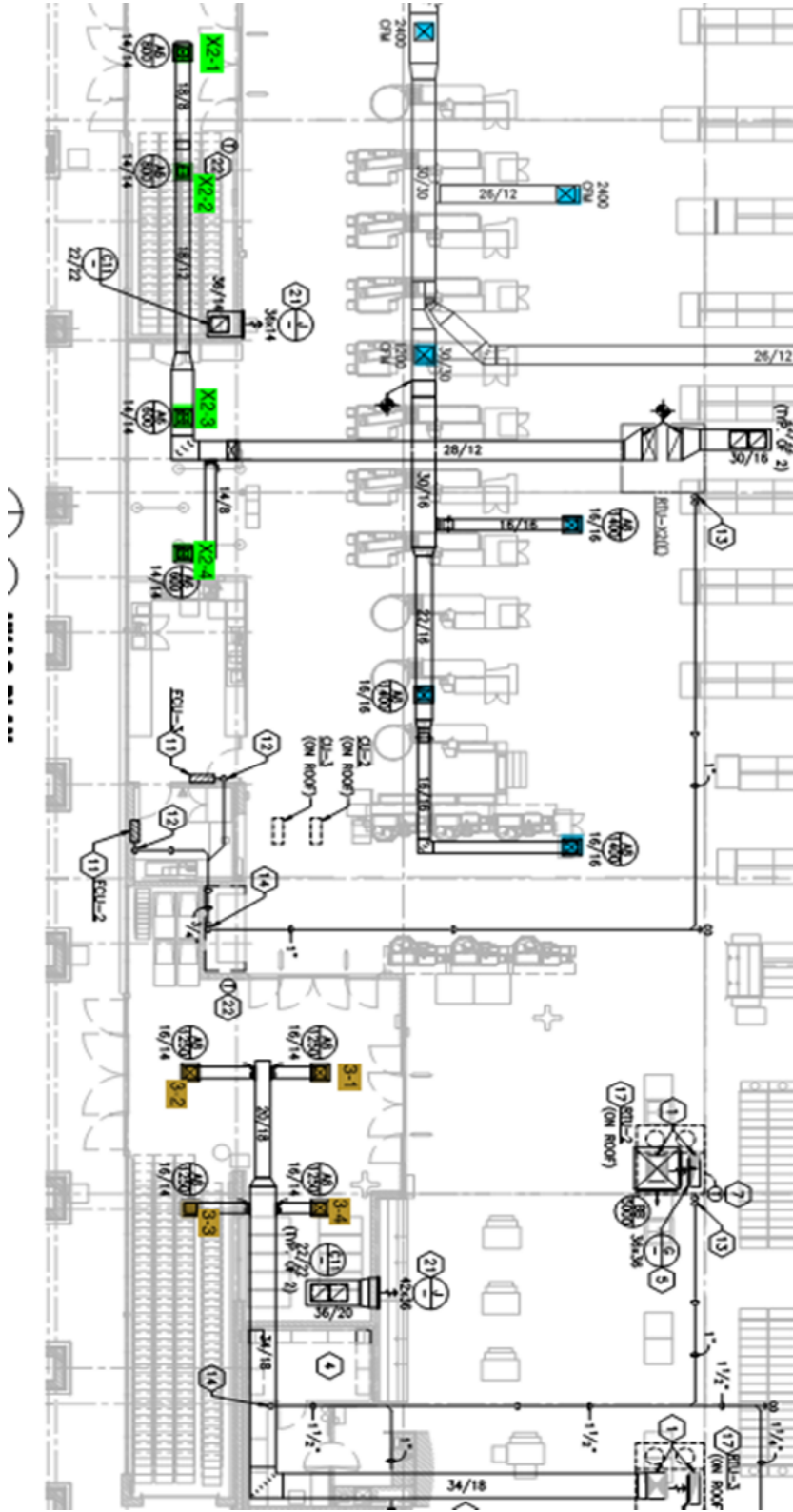
National TAB

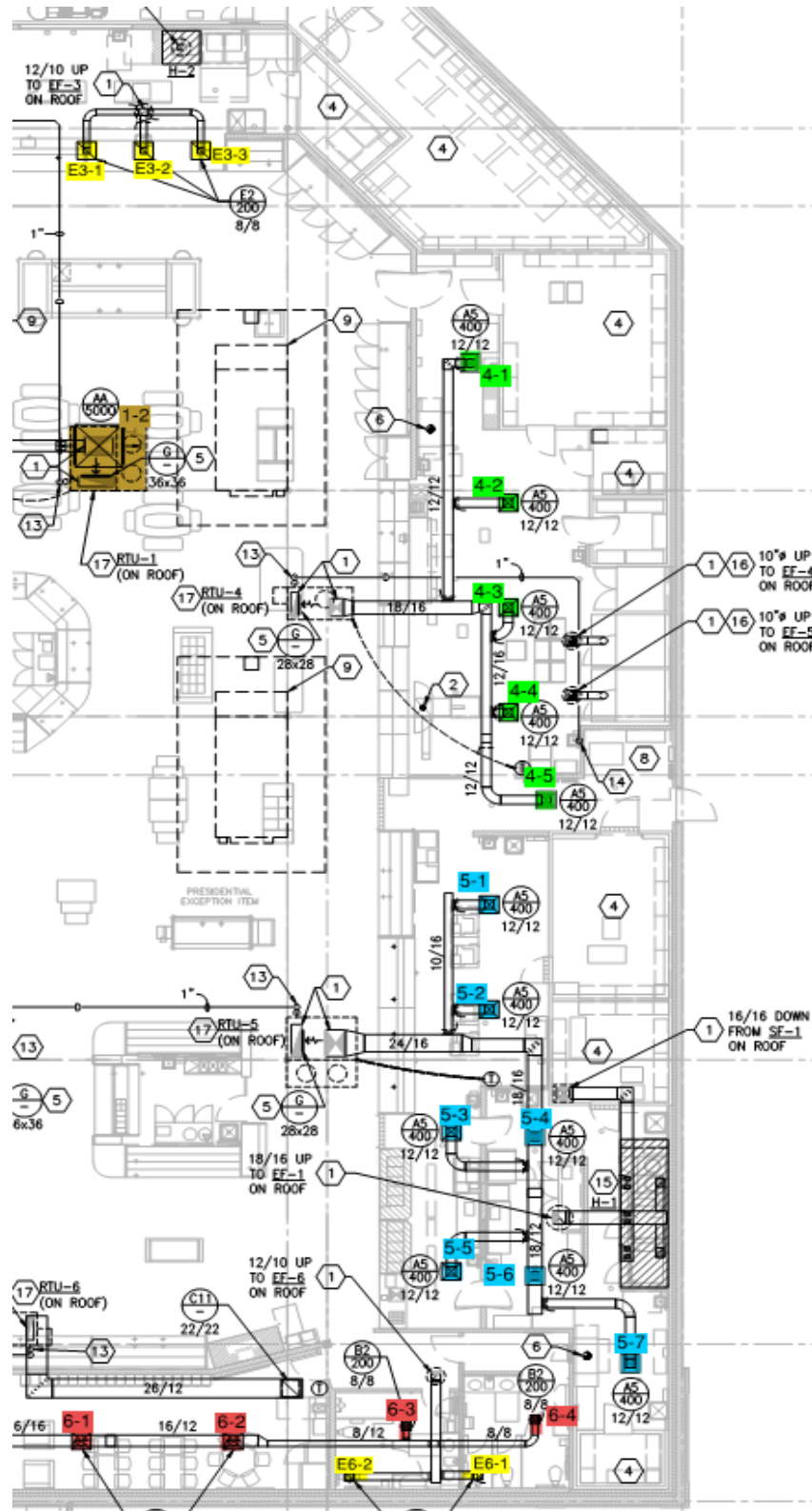
Project: KROGER 034-451 EULESS, TX (EXPANSION REMODEL)

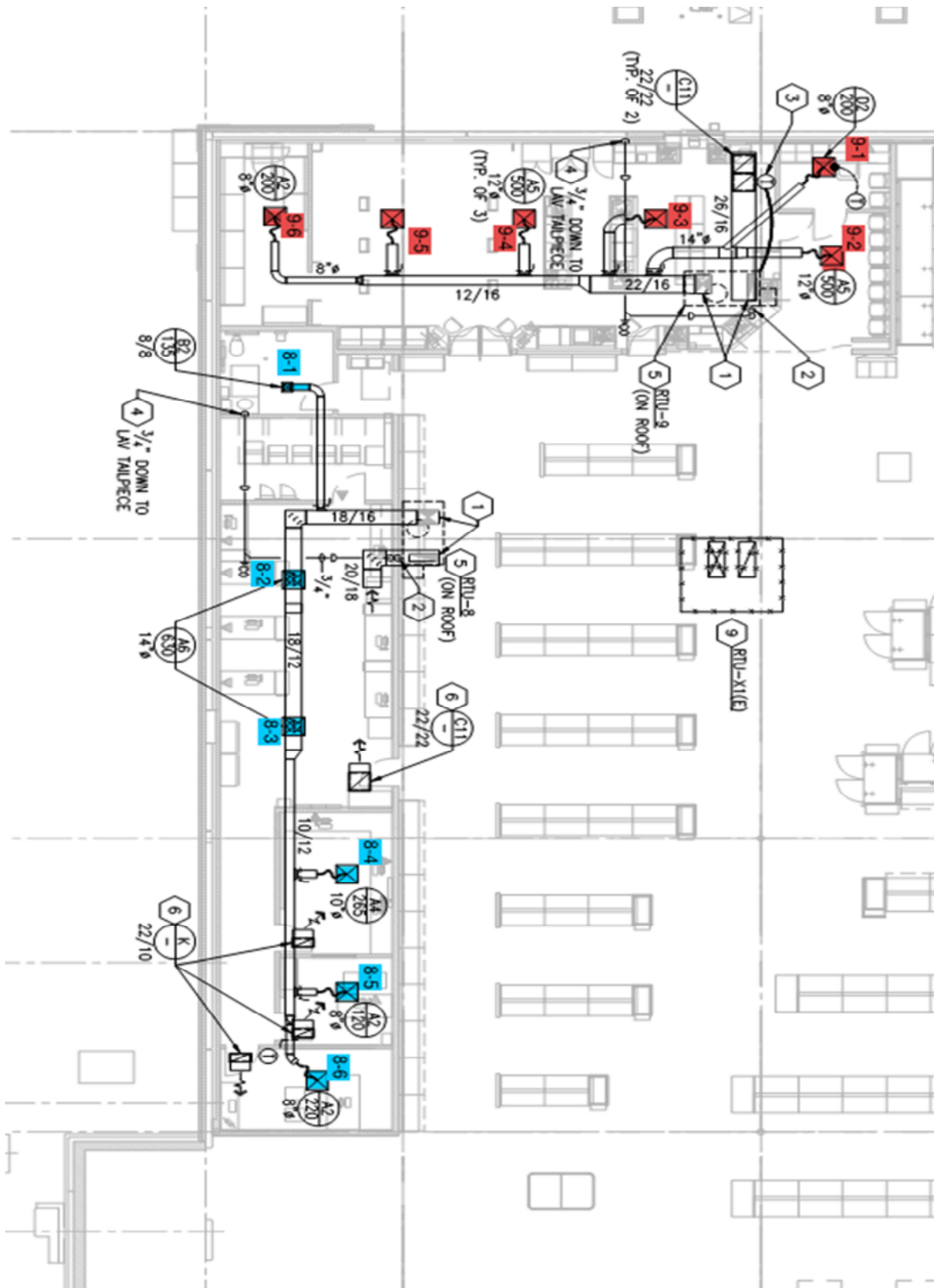
Table Of Contents

Section	Page #
Deficiency List	3
GRD Layout	4
Checklist Data	8
AHU/RTU	12
FAN - Supply	31
FAN - Exhaust	32
Kitchen Hood Type I	40
Kitchen Hood Type II	42











National TAB

Project: KROGER 034-451 EULESS, TX (EXPANSION REMODEL)



BUILDING PRESSURE AND SMOKE CONTAINMENT TEST

Assigned Organization: National TAB

Status: Not Submitted

Asset:

HOOD CAPTURE TEST	
LIST EQUIPMENT TURNED ON FOR TESTING	PRESSURE FRYERS / PRESSURE OVENS
LIST SMOKE CANDLE TYPE USED	45 SECOND SMOKE CARTRIDGE
SMOKE TEST CAPTURE - PERIMETER OF HOOD	100
SMOKE TEST CAPTURE - TOP OF COOKING SURFACE	100
WITNESS	
DATE TEST WAS COMPLETED	2/23/2017
TAB TECH NAME / FIRM	ROBERT SEPEDA
SITE SUPR NAME / FIRM	RYAN GODWIN
OWNER REPRESENTATIVE NAME / FIRM (IF APPLICABLE)	NOT PRESENT
CODE OFFICIAL NAME / FIRM (IF APPLICABLE)	NOT PRESENT
BUILDING PRESSURE AT FRONT & BACK DOORS (ALL SYSTEMS ON)	-

Notes/Comments:

MULTIPLE DOORS AT REAR OF BUILDING AS WELL AS AUTO SLIDING DOORS WERE OPEN, BUILDING PRESSURE WAS NOT MEASURED.



National TAB

Project: KROGER 034-451 EULESS, TX (EXPANSION REMODEL)



EXHAUST FAN SITE EVAL

Assigned Organization: National TAB

Status: Not Submitted

Asset:

EXHAUST FAN	
Verify units marked for easy identification	No
Unit sealed and properly seated to roof curb	Yes
No unusual vibration or noise present	Yes
Belts properly tensioned and free of damage	Yes
Pulleys properly aligned	Yes
Blower wheel moves freely by hand	Yes
Unit is providing required airflow	Yes
Verify on/off disconnect works	Yes
Verify voltage input is correct	Yes
Fan rotation is correct?	Yes

Notes/Comments:



National TAB

Project: KROGER 034-451 EULESS, TX (EXPANSION REMODEL)



HVAC SITE EVAL

Assigned Organization: National TAB

Status: Not Submitted

Asset:

HVAC DUCTWORK CHECKLIST	
Ductwork and diffusers are installed per design	Yes
Balance dampers installed and functional	Yes
Balance dampers are accessible	Yes
Ductwork is properly covered with insulation, & Insulation is secured	Yes
Tops of diffusers are properly insulated	Yes
Installed diffusers match design	Yes

Notes/Comments:



National TAB

Project: KROGER 034-451 EULESS, TX (EXPANSION REMODEL)



RTU SITE EVAL

Assigned Organization: National TAB

Status: Not Submitted

Asset:

RTU CHECKLIST	
Units are labeled and installed at proper locations	Yes
Units size matches its design (nameplate)	Yes
Clean filters are installed at DX coil	Yes
Belts are tight and in good working order	No
Pulleys are properly aligned	No
Motors rotating correctly	Yes
Motors are operating under full load amps	Yes
Units sealed and properly seated to roof curb	Yes
Evaporator coils clean and free of debris	Yes
Gas piping installed	Yes
Gas valves turned in the on position	Yes
Condensate lines and P-traps installed correctly	Yes
Disconnect switch installed	Yes
No noticeable vibration or noise exist correct?	Yes
Economizer filters installed	No
Outside air dampers installed and functioning	Yes
Outside air damper positions are clearly marked	Yes
Is unit bringing in sufficient amount of outside air	Yes
Unit is providing required supply airflow	Yes
Condensor coil clean and free of damage	Yes
Verify voltage input correct	Yes

Notes/Comments:

UNITS ARE DIRECT DRIVE AND ARE NOT SUPPLIED WITH ECONOMIZER FILTERS.



National TAB

Project: KROGER 034-451 EULESS, TX (EXPANSION REMODEL)

System/Unit: AHU/RTU



Asset: RTU1

AREA: SALES

Unit Data		
	Design	Actual
MFG	AAON	AAON
Model Num	RN-015-8-0-CA02-2F2	RN-015-8-0-CA02-2F2
Serial Num	-	201605-ANGL52965
Inventory Tag ID	-	NA
Type	RTU	RTU
Configuration	VERTICAL DISCHARGE	VERTICAL DISCHARGE
Num OA Filters 1	-	NA
OA Filter Size 1	-	NA
Num OA Filters 2	-	NA
OA Filter Size 2	-	NA
Num Final Filter 1	-	4
Final Filter Size 1	-	20X25X2
Num Final Filter 2	-	NA
Final Filter Size 2	-	NA

Test Data		
	Design	Actual
SF CFM	6000	5884
SF RPM	-	1560
RA CFM	5000	4870
OA CFM	1000	1014
RL Voltage	-	396
RL Amperage	-	5.7
SF Rotation	-	CW
OA Damper Position	-	7/8
OA Damper Type	-	OBD
Brake Horse Power	-	4.32

Performance Data		
	Design	Actual
MA Plenum SP	-	-.33"
Fan Suction SP	-	-.71"
Fan Discharge SP	-	.29"
Total ESP	0.35"	.62"
Fan Total SP	-	1.0"

Motor Data		
	Design	Actual
Motor MFG	-	BALDOR
Frame	-	184T
Horsepower	5	5
Motor Rpm	-	1750
Phase	3	3
Rated Voltage	208	460
Rated Amperage	-	6.6
Service Factor	-	1.15

Electrical		
	Design	Actual
VFD Phase Voltage (line)	-	465/467/473
VFD Min Setpt	-	20.4
VFD Max Setpt	-	52.0
Phase Brownout Dial Setpt (v)	-	460
Phase Brownout Volt Variance	-	10
Freeze Stat Setpt	-	NA
Compressor Lockout Setpt	-	45

Completed By: Robert Sepeda on 02/23/2017

Notes:



National TAB

Project: KROGER 034-451 EULESS, TX (EXPANSION REMODEL)

System/Unit: AHU/RTU



Diffuser Supply (GRD)

RTU1 / SALES

Asset	Area Served	Type	Size	DESIGN CFM	AK	CFM(1)	CFM(2)	FINAL CFM	% to design
SGRD1	BACK ROOM	H		1000		861	1088	1088	108.8
SGRD2	SALES	AA	24X10	5000		4328	4796	4796	95.9

Completed By: Robert Sepeda on 02/23/2017

Asset	Area Served	Notes



National TAB

Project: KROGER 034-451 EULESS, TX (EXPANSION REMODEL)

System/Unit: AHU/RTU



Asset: RTU2

AREA: SALES

Unit Data		
	Design	Actual
MFG	AAON	AAON
Model Num	RN-015-8-0-CA02-2F2	RN-015-8-0-CA02-2F2
Serial Num	-	201605-ANGL52966
Inventory Tag ID	-	NA
Type	RTU	RTU
Configuration	VERTICAL DISCHARGE	VERTICAL DISCHARGE
Num OA Filters 1	-	NA
OA Filter Size 1	-	NA
Num OA Filters 2	-	NA
OA Filter Size 2	-	NA
Num Final Filter 1	-	4
Final Filter Size 1	-	20X25X2
Num Final Filter 2	-	NA
Final Filter Size 2	-	NA

Motor Data		
	Design	Actual
Motor MFG	-	BALDOR
Frame	-	184T
Horsepower	5	5
Motor Rpm	-	1750
Phase	3	3
Rated Voltage	208	460
Rated Amperage	-	6.6
Service Factor	-	1.15

Electrical		
	Design	Actual
VFD Phase Voltage (line)	-	464/466/473
VFD Min Setpt	-	20.4
VFD Max Setpt	-	44.0
Phase Brownout Dial Setpt (v)	-	460
Phase Brownout Volt Variance	-	10
Freeze Stat Setpt	-	NA
Compressor Lockout Setpt	-	45

Test Data		
	Design	Actual
SF CFM	5000	5040
SF RPM	-	1320
RA CFM	5000	4020
OA CFM	1000	1020
RL Voltage	-	302
RL Amperage	-	3.24
SF Rotation	-	CW
OA Damper Position	-	7/8
OA Damper Type	-	OBD
Brake Horse Power	-	2.45

Performance Data		
	Design	Actual
MA Plenum SP	-	-.16"
Fan Suction SP	-	-.38"
Fan Discharge SP	-	.07"
Total ESP	0.35"	.23"
Fan Total SP	-	.45"

Completed By: Robert Sepeda on 02/23/2017

Notes:



National TAB

Project: KROGER 034-451 EULESS, TX (EXPANSION REMODEL)

System/Unit: AHU/RTU



Asset: RTU3

AREA: VESTIBULE

Unit Data		
	Design	Actual
MFG	AAON	AAON
Model Num	RN-015-8-0-CA02-2F2	RN-015-8-0-CA02-2F2
Serial Num	-	201605-ANGL52967
Inventory Tag ID	-	NA
Type	RTU	RTU
Configuration	VERTICAL DISCHARGE	VERTICAL DISCHARGE
Num OA Filters 1	-	NA
OA Filter Size 1	-	NA
Num OA Filters 2	-	NA
OA Filter Size 2	-	NA
Num Final Filter 1	-	4
Final Filter Size 1	-	20X25X2
Num Final Filter 2	-	NA
Final Filter Size 2	-	NA

Motor Data		
	Design	Actual
Motor MFG	-	BALDOR
Frame	-	184T
Horsepower	5	5
Motor Rpm	-	1750
Phase	3	3
Rated Voltage	208	460
Rated Amperage	-	6.6
Service Factor	-	1.15

Electrical		
	Design	Actual
VFD Phase Voltage (line)	-	464/449/453
VFD Min Setpt	-	20.4
VFD Max Setpt	-	53.0
Phase Brownout Dial Setpt (v)	-	460
Phase Brownout Volt Variance	-	10
Freeze Stat Setpt	-	NA
Compressor Lockout Setpt	-	45

Test Data		
	Design	Actual
SF CFM	5000	4999
SF RPM	-	1590
RA CFM	4000	3971
OA CFM	1000	1028
RL Voltage	-	359
RL Amperage	-	4.63
SF Rotation	-	CW
OA Damper Position	-	1/4
OA Damper Type	-	OBD
Brake Horse Power	-	3.51

Performance Data		
	Design	Actual
MA Plenum SP	-	-.25"
Fan Suction SP	-	-.53"
Fan Discharge SP	-	.53"
Total ESP	0.35"	.78"
Fan Total SP	-	1.06"

Completed By: Robert Sepeda on 02/23/2017

Notes:



National TAB

Project: KROGER 034-451 EULESS, TX (EXPANSION REMODEL)

System/Unit: AHU/RTU



Diffuser Supply (GRD)

RTU3 / VESTIBULE

Asset	Area Served	Type	Size	DESIGN CFM	AK	CFM(1)	CFM(2)	FINAL CFM	% to design
SGRD1	VESTIBULE	A8	16X14	1250		1399	1343	1343	107.4
SGRD2	VESTIBULE	A8	16X14	1250		1283	1231	1231	98.5
SGRD3	CART CORRAL	A8	16X14	1250		1180	1133	1133	90.6
SGRD4	CART CORRAL	A8	16X14	1250		1346	1292	1292	103.4

Completed By: Robert Sepeda on 02/23/2017

Asset	Area Served	Notes



National TAB

Project: KROGER 034-451 EULESS, TX (EXPANSION REMODEL)

System/Unit: AHU/RTU



Asset: RTU4

AREA: BAKERY

Unit Data		
	Design	Actual
MFG	AAON	AAON
Model Num	RQ-005-8-V-CA01-212	RQ-005-8-V-CA01-212
Serial Num	-	201605-AYGE12714
Inventory Tag ID	-	NA
Type	RTU	RTU
Configuration	VERTICAL DISCHARGE	VERTICAL DISCHARGE
Num OA Filters 1	-	NA
OA Filter Size 1	-	NA
Num OA Filters 2	-	NA
OA Filter Size 2	-	NA
Num Final Filter 1	-	2
Final Filter Size 1	-	20X20X2
Num Final Filter 2	-	NA
Final Filter Size 2	-	NA

Motor Data		
	Design	Actual
Motor MFG	-	BALDOR
Frame	-	56Z
Horsepower	2	2
Motor Rpm	-	1755
Phase	3	3
Rated Voltage	208	460
Rated Amperage	-	3.15
Service Factor	-	1.15

Electrical		
	Design	Actual
VFD Phase Voltage (line)	-	472/477/477
VFD Min Setpt	-	20.4
VFD Max Setpt	-	49.0
Phase Brownout Dial Setpt (v)	-	480
Phase Brownout Volt Variance	-	10
Freeze Stat Setpt	-	NA
Compressor Lockout Setpt	-	45

Test Data		
	Design	Actual
SF CFM	2000	2023
SF RPM	-	1470
RA CFM	1675	1668
OA CFM	325	355
RL Voltage	-	324
RL Amperage	-	2.19
SF Rotation	-	CW
OA Damper Position	-	3/4
OA Damper Type	-	OBD
Brake Horse Power	-	1.39

Performance Data		
	Design	Actual
MA Plenum SP	-	-.22"
Fan Suction SP	-	-.54"
Fan Discharge SP	-	.75
Total ESP	0.50"	.97"
Fan Total SP	-	1.24"

Completed By: Robert Sepeda on 02/23/2017

Notes:



National TAB

Project: KROGER 034-451 EULESS, TX (EXPANSION REMODEL)

System/Unit: AHU/RTU



Diffuser Supply (GRD)

RTU4 / BAKERY

Asset	Area Served	Type	Size	DESIGN CFM	AK	CFM(1)	CFM(2)	FINAL CFM	% to design
SGRD1	BAKERY	A5	12X12	400		414	448	448	112.0
SGRD2	BAKERY	A5	12X12	400		339	413	413	103.3
SGRD3	BAKERY	A5	12X12	400		361	373	373	93.3
SGRD4	BAKERY	A5	12X12	400		371	389	389	97.3
SGRD5	BAKERY	A5	12X12	400		374	400	400	100.0

Completed By: Robert Sepeda on 02/23/2017

Asset	Area Served	Notes



National TAB

Project: KROGER 034-451 EULESS, TX (EXPANSION REMODEL)

System/Unit: AHU/RTU



Asset: RTU5

AREA: DELI

Unit Data		
	Design	Actual
MFG	AAON	AAON
Model Num	RN-008-8-0-CA01-222	RN-008-8-0-CA01-222
Serial Num	-	201605-ANGH52978
Inventory Tag ID	-	NA
Type	RTU	RTU
Configuration	VERTICAL DISCHARGE	VERTICAL DISCHARGE
Num OA Filters 1	-	NA
OA Filter Size 1	-	NA
Num OA Filters 2	-	NA
OA Filter Size 2	-	NA
Num Final Filter 1	-	4
Final Filter Size 1	-	16X20X2
Num Final Filter 2	-	NA
Final Filter Size 2	-	NA

Motor Data		
	Design	Actual
Motor MFG	-	BALDOR
Frame	-	182T
Horsepower	3	3
Motor Rpm	-	1765
Phase	3	3
Rated Voltage	208	460
Rated Amperage	-	4.2
Service Factor	-	1.15

Electrical		
	Design	Actual
VFD Phase Voltage (line)	-	472/476/476
VFD Min Setpt	-	20.4
VFD Max Setpt	-	63.0
Phase Brownout Dial Setpt (v)	-	480
Phase Brownout Volt Variance	-	10
Freeze Stat Setpt	-	NA
Compressor Lockout Setpt	-	45

Completed By: Robert Sepeda on 02/23/2017

Notes:

Test Data		
	Design	Actual
SF CFM	2800	2761
SF RPM	-	1890
RA CFM	2520	2480
OA CFM	280	281
RL Voltage	-	368
RL Amperage	-	2.66
SF Rotation	-	CW
OA Damper Position	-	1/2
OA Damper Type	-	OBD
Brake Horse Power	-	1.9

Performance Data		
	Design	Actual
MA Plenum SP	-	-.19"
Fan Suction SP	-	-.39"
Fan Discharge SP	-	.59"
Total ESP	0.50"	.78"
Fan Total SP	-	.98"



National TAB

Project: KROGER 034-451 EULESS, TX (EXPANSION REMODEL)

System/Unit: AHU/RTU



Diffuser Supply (GRD)

RTU5 / DELI

Asset	Area Served	Type	Size	DESIGN CFM	AK	CFM(1)	CFM(2)	FINAL CFM	% to design
SGRD1	DELI	A5	12X12	400		390	422	402	100.5
SGRD2	DELI	A5	12X12	400		419	421	411	102.8
SGRD3	DELI	A5	12X12	400		120	380	376	94.0
SGRD4	DELI	A5	12X12	400		357	321	362	90.5
SGRD5	DELI	A5	12X12	400		285	321	369	92.3
SGRD6	DELI	A5	12X12	400		490	499	440	110.0
SGRD7	DELI	A5	12X12	400		416	413	401	100.3

Completed By: Robert Sepeda on 02/23/2017

Asset	Area Served	Notes



National TAB

Project: KROGER 034-451 EULESS, TX (EXPANSION REMODEL)

System/Unit: AHU/RTU



Asset: RTU6

AREA: BREAK/RR

Unit Data		
	Design	Actual
MFG	AAON	AAON
Model Num	RQ-004-8-V-CA01-212	RQ-004-8-V-CA01-212
Serial Num	-	201605-AYGD12715
Inventory Tag ID	-	NA
Type	RTU	RTU
Configuration	VERTICAL DISCHARGE	VERTICAL DISCHARGE
Num OA Filters 1	-	NA
OA Filter Size 1	-	NA
Num OA Filters 2	-	NA
OA Filter Size 2	-	NA
Num Final Filter 1	-	2
Final Filter Size 1	-	20X20X2
Num Final Filter 2	-	NA
Final Filter Size 2	-	NA

Test Data		
	Design	Actual
SF CFM	1600	1571
SF RPM	-	1710
RA CFM	1400	1360
OA CFM	200	211
RL Voltage	-	379
RL Amperage	-	1.28
SF Rotation	-	CW
OA Damper Position	-	1/2
OA Damper Type	-	OBD
Brake Horse Power	-	.80

Performance Data		
	Design	Actual
MA Plenum SP	-	-.31"
Fan Suction SP	-	-.47"
Fan Discharge SP	-	.31"
Total ESP	0.50"	.62"
Fan Total SP	-	.78"

Motor Data		
	Design	Actual
Motor MFG	-	BALDOR
Frame	-	56Z
Horsepower	1	1
Motor Rpm	-	1750
Phase	3	3
Rated Voltage	208	460
Rated Amperage	-	1.6
Service Factor	-	1.15

Electrical		
	Design	Actual
VFD Phase Voltage (line)	-	472/475/476
VFD Min Setpt	-	20.4
VFD Max Setpt	-	57.0
Phase Brownout Dial Setpt (v)	-	480
Phase Brownout Volt Variance	-	10
Freeze Stat Setpt	-	NA
Compressor Lockout Setpt	-	45

Completed By: Robert Sepeda on 02/23/2017

Notes:



National TAB

Project: KROGER 034-451 EULESS, TX (EXPANSION REMODEL)

System/Unit: AHU/RTU



Diffuser Supply (GRD)

RTU6 / BREAK/RR

Asset	Area Served	Type	Size	DESIGN CFM	AK	CFM(1)	CFM(2)	FINAL CFM	% to design
SGRD1	BREAKROOM	A6	14"	600		550	581	581	96.8
SGRD2	BREAKROOM	A6	14"	600		526	550	550	91.7
SGRD3	RESTROOM	B2	8X8	200		167	198	198	99.0
SGRD4	RESTROOM	B2	8X8	200		218	242	242	121.0

Completed By: Robert Sepeda on 02/23/2017

Asset	Area Served	Notes
SGRD4	RESTROOM	NO DAMPER INSTALLED



National TAB

Project: KROGER 034-451 EULESS, TX (EXPANSION REMODEL)

System/Unit: AHU/RTU



Asset: RTU8

AREA: OFFICE

Unit Data		
	Design	Actual
MFG	AAON	AAON
Model Num	RQ-005-8-V-CA01-212	RQ-005-8-V-CA01-212
Serial Num	-	201605-AYGE12716
Inventory Tag ID	-	NA
Type	RTU	RTU
Configuration	VERTICAL DISCHARGE	VERTICAL DISCHARGE
Num OA Filters 1	-	NA
OA Filter Size 1	-	NA
Num OA Filters 2	-	NA
OA Filter Size 2	-	NA
Num Final Filter 1	-	2
Final Filter Size 1	-	20X20X2
Num Final Filter 2	-	NA
Final Filter Size 2	-	NA

Test Data		
	Design	Actual
SF CFM	2000	2055
SF RPM	-	1470
RA CFM	1675	1722
OA CFM	325	333
RL Voltage	-	326
RL Amperage	-	2.16
SF Rotation	-	CW
OA Damper Position	-	5/8
OA Damper Type	-	OBD
Brake Horse Power	-	1.37

Performance Data		
	Design	Actual
MA Plenum SP	-	-.26"
Fan Suction SP	-	-.49"
Fan Discharge SP	-	.75"
Total ESP	0.50"	1.01"
Fan Total SP	-	1.24"

Motor Data		
	Design	Actual
Motor MFG	-	BALDOR
Frame	-	56Z
Horsepower	2	2
Motor Rpm	-	1755
Phase	3	3
Rated Voltage	208	460
Rated Amperage	-	3.15
Service Factor	-	1.15

Electrical		
	Design	Actual
VFD Phase Voltage (line)	-	471/474/475
VFD Min Setpt	-	20.4
VFD Max Setpt	-	49.0
Phase Brownout Dial Setpt (v)	-	480
Phase Brownout Volt Variance	-	10
Freeze Stat Setpt	-	NA
Compressor Lockout Setpt	-	45

Completed By: Robert Sepeda on 02/23/2017

Notes:



National TAB

Project: KROGER 034-451 EULESS, TX (EXPANSION REMODEL)

System/Unit: AHU/RTU



Diffuser Supply (GRD)

RTU8 / OFFICE

Asset	Area Served	Type	Size	DESIGN CFM	AK	CFM(1)	CFM(2)	FINAL CFM	% to design
SGRD1	RESTROOM	B2	8X8	135		240	240	240	177.8
SGRD2	OFFICE	A6	14"	630		559	559	559	88.7
SGRD3	OFFICE	A6	14"	630		643	643	643	102.1
SGRD4	OFFICE	A4	10"	265		278	278	278	104.9
SGRD5	OFFICE	A2	8"	120		129	129	129	107.5
SGRD6	OFFICE	A2	8"	220		206	206	206	93.6

Completed By: Robert Sepeda on 02/23/2017

Asset	Area Served	Notes
SGRD1	RESTROOM	IF DAMPER IS INSTALLED AT TAP IT IS NOT ACCESSIBLE. OBD AT GRILL FACE IS RECOMMENDED.



National TAB

Project: KROGER 034-451 EULESS, TX (EXPANSION REMODEL)

System/Unit: AHU/RTU



Asset: RTU9

AREA: PHARMACY

Unit Data		
	Design	Actual
MFG	AAON	AAON
Model Num	RQ-006-8-V-CA01-212	RQ-006-8-V-CA01-212
Serial Num	-	201605-AYGF12717
Inventory Tag ID	-	NA
Type	RTU	RTU
Configuration	VERTICAL DISCHARGE	VERTICAL DISCHARGE
Num OA Filters 1	-	NA
OA Filter Size 1	-	NA
Num OA Filters 2	-	NA
OA Filter Size 2	-	NA
Num Final Filter 1	-	2
Final Filter Size 1	-	20X20X2
Num Final Filter 2	-	NA
Final Filter Size 2	-	NA

Test Data		
	Design	Actual
SF CFM	2400	2463
SF RPM	-	1800
RA CFM	2050	2090
OA CFM	350	373
RL Voltage	-	443
RL Amperage	-	2.83
SF Rotation	-	CW
OA Damper Position	-	5/8
OA Damper Type	-	OBD
Brake Horse Power	-	1.80

Performance Data		
	Design	Actual
MA Plenum SP	-	-.33"
Fan Suction SP	-	-.54"
Fan Discharge SP	-	.86"
Total ESP	0.50"	1.19"
Fan Total SP	-	1.40"

Motor Data		
	Design	Actual
Motor MFG	-	BALDOR
Frame	-	56Z
Horsepower	2	2
Motor Rpm	-	1755
Phase	3	3
Rated Voltage	208	460
Rated Amperage	-	3.15
Service Factor	-	1.15

Electrical		
	Design	Actual
VFD Phase Voltage (line)	-	471/475/475
VFD Min Setpt	-	20.4
VFD Max Setpt	-	60.0
Phase Brownout Dial Setpt (v)	-	480
Phase Brownout Volt Variance	-	10
Freeze Stat Setpt	-	38
Compressor Lockout Setpt	-	45

Completed By: Robert Sepeda on 02/23/2017

Notes:



National TAB

Project: KROGER 034-451 EULESS, TX (EXPANSION REMODEL)

System/Unit: AHU/RTU



Diffuser Supply (GRD)

RTU9 / PHARMACY

Asset	Area Served	Type	Size	DESIGN CFM	AK	CFM(1)	CFM(2)	FINAL CFM	% to design
SGRD1	COUNSEL	D2	8"	200		138	184	184	92.0
SGRD2	WAITING	A5	12"	500		439	477	477	95.4
SGRD3	PHARMACY	A5	12"	500		515	540	540	108.0
SGRD4	PHARMACY	A5	12"	500		473	506	506	101.2
SGRD5	PHARMACY	A5	12"	500		522	544	544	108.8
SGRD6	RX STORAGE	A2	8"	200		193	212	212	106.0

Completed By: Robert Sepeda on 02/23/2017

Asset	Area Served	Notes



National TAB

Project: KROGER 034-451 EULESS, TX (EXPANSION REMODEL)

System/Unit: AHU/RTU



Asset: RTU10

AREA: CONFERENCE

Unit Data		
	Design	Actual
MFG	AAON	AAON
Model Num	RQ-003-8-V-CA01-212	RQ-003-8-V-CA01-212
Serial Num	-	201605-AYGC12718
Inventory Tag ID	-	NA
Type	RTU	RTU
Configuration	VERTICAL DISCHARGE	VERTICAL DISCHARGE
Num OA Filters 1	-	NA
OA Filter Size 1	-	NA
Num OA Filters 2	-	NA
OA Filter Size 2	-	NA
Num Final Filter 1	-	2
Final Filter Size 1	-	20X20X2
Num Final Filter 2	-	NA
Final Filter Size 2	-	NA

Motor Data		
	Design	Actual
Motor MFG	-	BALDOR
Frame	-	56Z
Horsepower	1	1
Motor Rpm	-	1750
Phase	3	3
Rated Voltage	208	460
Rated Amperage	-	1.6
Service Factor	-	1.15

Electrical		
	Design	Actual
VFD Phase Voltage (line)	-	472/476/474
VFD Min Setpt	-	20.4
VFD Max Setpt	-	41.0
Phase Brownout Dial Setpt (v)	-	480
Phase Brownout Volt Variance	-	10
Freeze Stat Setpt	-	NA
Compressor Lockout Setpt	-	45

Test Data		
	Design	Actual
SF CFM	1050	998
SF RPM	-	1230
RA CFM	800	744
OA CFM	250	254
RL Voltage	-	231
RL Amperage	-	.90
SF Rotation	-	CW
OA Damper Position	-	3/4"
OA Damper Type	-	OBD
Brake Horse Power	-	.56

Performance Data		
	Design	Actual
MA Plenum SP	-	-.10"
Fan Suction SP	-	-.21"
Fan Discharge SP	-	.24"
Total ESP	0.50"	.34"
Fan Total SP	-	.45"

Completed By: Robert Sepeda on 02/23/2017

Notes:



National TAB

Project: KROGER 034-451 EULESS, TX (EXPANSION REMODEL)

System/Unit: AHU/RTU



Diffuser Supply (GRD)

RTU10 / CONFERENCE

Asset	Area Served	Type	Size	DESIGN CFM	AK	CFM(1)	CFM(2)	FINAL CFM	% to design
SGRD1	CONFERENCE	A5	12X12	405		398	372	372	91.9
SGRD2	CONFERENCE	A5	12X12	405		346	365	365	90.1
SGRD3	RESTROOM	A1	6X6	120		156	132	132	110.0
SGRD4	RESTROOM	A1	6X6	120		130	129	129	107.5

Completed By: Robert Sepeda on 02/23/2017

Asset	Area Served	Notes



National TAB

Project: KROGER 034-451 EULESS, TX (EXPANSION REMODEL)

System/Unit: AHU/RTU



Asset: RTU-X2

AREA: VESTIBULE

Unit Data		
	Design	Actual
MFG	AAON	AAON
Model Num	RN-007-8-0-CA01-222	RN-007-8-0-CA01-222
Serial Num	-	201011-ANGG13756
Type	RTU	RTU
Configuration	VERTICAL DISCHARGE	VERTICAL DISCHARGE
Num OA Filters 1	-	NA
OA Filter Size 1	-	NA
Num OA Filters 2	-	NA
OA Filter Size 2	-	NA
Num Final Filter 1	-	4
Final Filter Size 1	-	16X20X2
Num Final Filter 2	-	NA
Final Filter Size 2	-	NA

Test Data		
	Design	Actual
SF CFM	2800	2792
SF RPM	-	NA
RA CFM	2650	2627
OA CFM	150	165
RL Voltage	-	208/209/208
RL Amperage	-	2.8/2.8/2.8
SF Rotation	-	CW
VFD Max SetPt	-	54.0
VFD Min SetPt	-	20.0
RA Damper Position	-	NA
RA Damper Type	-	NA
OA Damper Position	-	3/8
OA Damper Type	-	SLIDE
Brake Horse Power	-	.92

Motor Data		
	Design	Actual
Motor MFG	-	BALDOR
Frame	-	145T
Horsepower	2	2
Motor Rpm	-	1725
Phase	3	3
Rated Voltage	208	208
Rated Amperage	-	6.1
Frequency	-	58.0
Service Factor	-	1.15
Efficiency	-	86.5
Power Factor	-	82

Performance Data		
	Design	Actual
MA Plenum SP	-	-.39"
Fan Suction SP	-	-.59"
Fan Discharge SP	-	.34"
Total ESP	1.00"	.73"
Fan Total SP	-	.93"

Drive Data		
	Design	Actual
Motor Sheave Size	-	DIRECT DRIVE
Motor Bore Size	-	DIRECT DRIVE
Motor Sheave SetPt	-	DIRECT DRIVE
Fan Sheave Size	-	DIRECT DRIVE
Fan Sheave Bore	-	DIRECT DRIVE
Belt CL Distance	-	DIRECT DRIVE
Num of Belts	-	DIRECT DRIVE
Belt Size	-	DIRECT DRIVE
Belt Alignment	-	DIRECT DRIVE



National TAB

Project: KROGER 034-451 EULESS, TX (EXPANSION REMODEL)

System/Unit: AHU/RTU



Electrical		
	Design	Actual
VFD Min Setpt	-	20.0
VFD Max Setpt	-	58.0
Phase Brownout Dial Setpt (v)	-	208
Freeze Stat Setpt	-	38

Completed By: Robert Sepeda on 02/23/2017

Notes:

Diffuser Supply (GRD)

RTU-X2 / VESTIBULE

Asset	Area Served	Type	Size	DESIGN CFM	AK	CFM(1)	CFM(2)	FINAL CFM	% to design
SGRD1	VESTIBULE	A6	14X14	800		825	877	877	109.6
SGRD2	CART CORRAL	A6	14X14	800		692	740	740	92.5
SGRD3	ENTRY	A6	14X14	600		560	599	599	99.8
SGRD4	ENTRY	A6	14X14	600		549	576	576	96.0

Completed By: Robert Sepeda on 02/23/2017

Asset	Area Served	Notes



National TAB

Project: KROGER 034-451 EULESS, TX (EXPANSION REMODEL)

System/Unit: FAN - Supply



Asset: SF1

AREA: DELI PREP

Unit Data		
	Design	Actual
MFG	CAPTIVE-AIRE	CAPTIVE-AIRE
Model Num	A1-G10	A1-G10
Serial Num	-	2560215
Type	MAU	MAU
Configuration	VERTICAL DISCHARGE	VERTICAL DISCHARGE

Motor Data		
	Design	Actual
Motor MFG	-	WEG
Frame	-	56
Horsepower	0.5	1/2
Motor Rpm	-	1765
Phase	3	3
Voltage (rated)	208	208
Amperage (rated)	-	1.9
Service Factor	-	1.0

Drive Data		
	Design	Actual
Motor Sheave Size	-	1VL40
Motor Bore Size	-	5/8
Fan Sheave Size	-	AK114
Fan Sheave Bore	-	3/4
Belt CL Distance	-	13 3/4
Num of Belts	-	1
Belt Size	-	AX50
Belt Alignment Verified	-	YES

Gas Heat		
	Design	Actual
Heater Operates (y/n)	-	NA
Flame Status (pass/fail)	-	NA
Inlet Air Temp SetPt	55	NA
Discharge Air Temp SetPt	60	NA

Completed By: Robert Sepeda on 02/23/2017

Notes: NOT EQUIPPED WITH HEAT

Test Data		
	Design	Actual
CFM	1680	1553
SF RPM	502	573
SF Rotation	-	CW
Motor RPM	-	1784
RL Voltage	-	211/210/208
RL Amperage	-	1.4/1.3/1.2
Total ESP	0.096"	-
Fan Discharge SP	-	-

General		
	Design	Actual
Fan Rotation Correct	-	YES



National TAB

Project: KROGER 034-451 EULESS, TX (EXPANSION REMODEL)

System/Unit: FAN - Exhaust



Asset: EF1

AREA: DELI PREP

Unit Data		
	Design	Actual
MFG	CAPTIVE-AIRE	CAPTIVE-AIRE
Model Num	NCA18HPFA	NCA18HPFA
Serial Num	-	2560215
Type	CENTRIFUGAL	CENTRIFUGAL
Configuration	UPBLAST	UPBLAST

Test Data		
	Design	Actual
CFM	2800	2916
Fan RPM	1162	1180
Fan Rotation	-	CCW
Motor RPM	-	1755
RL Voltage	-	211/209/207
RL Amperage	-	3.8/3.7/3.6
Suction ESP	-	-1.12
Discharge ESP	-	NA
Total ESP	1.33"	1.12"
Brake Horse Power	-	1.20

Motor Data		
	Design	Actual
Motor MFG	-	WEG
Frame	-	56H
Horsepower	1.5	1.5
Motor Rpm	-	1760
Phase	3	3
Voltage (rated)	208	208
Amperage (rated)	-	4.64
Service Factor	-	1.0

Drive Data		
	Design	Actual
Motor Sheave Size	-	1VL40
Motor Bore Size	-	5/8
Motor Sheave SetPt	-	-
Fan Sheave Size	-	5 1/4
Fan Sheave Bore	-	1"
Belt CL Distance	-	7"
Num of Belts	-	1
Belt Size	-	AX26

Completed By: Robert Sepeda on 02/23/2017

Notes:



National TAB

Project: KROGER 034-451 EULESS, TX (EXPANSION REMODEL)

System/Unit: FAN - Exhaust



Asset: EF2

AREA: SEAFOOD PREP

Unit Data		
	Design	Actual
MFG	CAPTIVE-AIRE	CAPTIVE-AIRE
Model Num	DU33HFA	DU33HFA
Serial Num	-	2560215
Type	CENTRIFUGAL	CENTRIFUGAL
Configuration	UPBLAST	UPBLAST

Motor Data		
	Design	Actual
Motor MFG	-	HSSA
Frame	-	48Y
Horsepower	0.33	1/3
Motor Rpm	-	1625
Phase	1	1
Voltage (rated)	115	115
Amperage (rated)	-	5.6
Service Factor	-	1.0

Test Data		
	Design	Actual
CFM	600	619
Fan RPM	1250	DIRECT DRIVE
Fan Rotation	-	CCW
Motor RPM	-	DIRECT DRIVE
System SetPt	-	MIN ON VSC
RL Voltage	-	66.0
RL Amperage	-	2.30
Total ESP	0.125"	.24"
Fan Inlet SP	-	-.24"
Fan Discharge SP	-	NA

Completed By: Robert Sepeda on 02/23/2017

Notes:



National TAB

Project: KROGER 034-451 EULESS, TX (EXPANSION REMODEL)

System/Unit: FAN - Exhaust



Asset: EF3

AREA: SEAFOOD PREP

Unit Data		
	Design	Actual
MFG	CAPTIVE-AIRE	CAPTIVE-AIRE
Model Num	DR12HFA	DR12HFA
Serial Num	-	2560215
Type	CENTRIFUGAL	CENTRIFUGAL
Configuration	DOWNBLAST	DOWNBLAST

Test Data		
	Design	Actual
CFM	600	601
Fan RPM	1250	DIRECT DRIVE
Fan Rotation	-	CCW
Motor RPM	-	DIRECT DRIVE
System SetPt	-	MID ON VSC
RL Voltage	-	88.1
RL Amperage	-	94
Total ESP	0.125"	.19"
Fan Inlet SP	-	-.19"
Fan Discharge SP	-	NA

Motor Data		
	Design	Actual
Motor MFG	-	HSSA
Frame	-	42Y
Horsepower	0.18	1/6
Motor Rpm	-	1625
Phase	1	1
Voltage (rated)	115	115
Amperage (rated)	-	1.9
Service Factor	-	1.0

Completed By: Robert Sepeda on 02/23/2017

Notes:

Diffuser Ret/Exh (GRD)

EF3 / SEAFOOD PREP

Asset	Area Served	Type	Size	DESIGN CFM	AK	CFM(1)	CFM(2)	FINAL CFM	% to design
EGRD1	SEAFOOD PREP	E2	8X8	200		200	182	182	91.0
EGRD2	SEAFOOD PREP	E2	8X8	200		231	201	201	100.5
EGRD3	SEAFOOD PREP	E2	8X8	200		290	218	218	109.0

Completed By: Robert Sepeda on 02/23/2017

Asset	Area Served	Notes



National TAB

Project: KROGER 034-451 EULESS, TX (EXPANSION REMODEL)

System/Unit: FAN - Exhaust



Asset: EF4

AREA: DOUBLE RACK OVEN

Unit Data		
	Design	Actual
MFG	CAPTIVE-AIRE	CAPTIVE-AIRE
Model Num	NCA14HPFA	NCA14HPFA
Serial Num	-	2560215
Type	CENTRIFUGAL	CENTRIFUGAL
Configuration	UPBLAST	UPBLAST

Test Data		
	Design	Actual
CFM	900	884
Fan RPM	1288	1282
Fan Rotation	-	CCW
Motor RPM	-	1746
RL Voltage	-	118
RL Amperage	-	6.8
Suction ESP	-	-.79
Discharge ESP	-	NA
Total ESP	1.20"	.79"
Brake Horse Power	-	.44

Motor Data		
	Design	Actual
Motor MFG	-	WEG
Frame	-	C56
Horsepower	0.5	1/2
Motor Rpm	-	1730
Phase	1	1
Voltage (rated)	115	115
Amperage (rated)	-	7.7
Service Factor	-	1.35

Drive Data		
	Design	Actual
Motor Sheave Size	-	1VL40
Motor Bore Size	-	5/8
Motor Sheave SetPt	-	-
Fan Sheave Size	-	AK46
Fan Sheave Bore	-	3/4
Belt CL Distance	-	5 7/8
Num of Belts	-	1
Belt Size	-	AX22

Completed By: Robert Sepeda on 02/23/2017

Notes:



National TAB

Project: KROGER 034-451 EULESS, TX (EXPANSION REMODEL)

System/Unit: FAN - Exhaust



Asset: EF5

AREA: DOUBLE RACK OVEN

Unit Data		
	Design	Actual
MFG	CAPTIVE-AIRE	CAPTIVE-AIRE
Model Num	NCA14HPFA	NCA14HPFA
Serial Num	-	2560215
Type	CENTRIFUGAL	CENTRIFUGAL
Configuration	UPBLAST	UPBLAST

Test Data		
	Design	Actual
CFM	900	931
Fan RPM	1288	1311
Fan Rotation	-	CCW
Motor RPM	-	1731
RL Voltage	-	119
RL Amperage	-	7.2
Suction ESP	-	-.84"
Discharge ESP	-	NA
Total ESP	1.20"	.84"
Brake Horse Power	-	.47

Motor Data		
	Design	Actual
Motor MFG	-	WEG
Frame	-	C56
Horsepower	0.5	1/2
Motor Rpm	-	1730
Phase	1	1
Voltage (rated)	115	115
Amperage (rated)	-	7.7
Service Factor	-	1.35

Drive Data		
	Design	Actual
Motor Sheave Size	-	1VL40
Motor Bore Size	-	5/8
Motor Sheave SetPt	-	-
Fan Sheave Size	-	AK46
Fan Sheave Bore	-	3/4
Belt CL Distance	-	5 3/4
Num of Belts	-	1
Belt Size	-	AX22

Completed By: Robert Sepeda on 02/23/2017

Notes:



National TAB

Project: KROGER 034-451 EULESS, TX (EXPANSION REMODEL)

System/Unit: FAN - Exhaust



Asset: EF6

AREA: PUBLIC RR

Unit Data		
	Design	Actual
MFG	CAPTIVE-AIRE	CAPTIVE-AIRE
Model Num	DR12HFA	DR12HFA
Serial Num	-	2560215
Type	CENTRIFUGAL	CENTRIFUGAL
Configuration	DOWNBLAST	DOWNBLAST

Test Data		
	Design	Actual
CFM	600	549
Fan RPM	1250	DIRECT DRIVE
Fan Rotation	-	CCW
Motor RPM	-	DIRECT DRIVE
System SetPt	-	MAX ON VSC
RL Voltage	-	114
RL Amperage	-	1.0
Total ESP	0.125"	.50"
Fan Inlet SP	-	-.50"
Fan Discharge SP	-	NA

Motor Data		
	Design	Actual
Motor MFG	-	HSSA
Frame	-	42Y
Horsepower	0.18	1/6
Motor Rpm	-	1625
Phase	1	1
Voltage (rated)	115	115
Amperage (rated)	-	1.9
Service Factor	-	1.0

Completed By: Robert Sepeda on 02/23/2017

Notes: DAMPERS WERE NOT INSTALLED.

Diffuser Ret/Exh (GRD)

EF6 / PUBLIC RR

Asset	Area Served	Type	Size	DESIGN CFM	AK	CFM(1)	CFM(2)	FINAL CFM	% to design
EGRD1	PUBLIC RR	F4	10X10	300		361	384	384	128.0
EGRD2	PUBLIC RR	F4	10X10	300		148	165	165	55.0

Completed By: Robert Sepeda on 02/23/2017

Asset	Area Served	Notes



National TAB

Project: KROGER 034-451 EULESS, TX (EXPANSION REMODEL)

System/Unit: FAN - Exhaust



Asset: EF7

AREA: PUBLIC RR

Unit Data		
	Design	Actual
MFG	CAPTIVE-AIRE	CAPTIVE-AIRE
Model Num	DR10HFA	DR10HFA
Serial Num	-	2560215
Type	CENTRIFUGAL	CENTRIFUGAL
Configuration	DOWNBLAST	DOWNBLAST

Motor Data		
	Design	Actual
Motor MFG	-	HSSA
Frame	-	NOT LISTED
Horsepower	0.06	1/15
Motor Rpm	-	1550
Phase	1	1
Voltage (rated)	115	115
Amperage (rated)	-	1.1
Service Factor	-	NOT LISTED

Test Data		
	Design	Actual
CFM	200	219
Fan RPM	930	DIRECT DRIVE
Fan Rotation	-	CCW
Motor RPM	-	DIRECT DRIVE
System SetPt	-	MAX
RL Voltage	-	114.2
RL Amperage	-	.37
Total ESP	0.125"	.34"
Fan Inlet SP	-	-.34"
Fan Discharge SP	-	NA

Completed By: Robert Sepeda on 02/23/2017

Notes:



National TAB

Project: KROGER 034-451 EULESS, TX (EXPANSION REMODEL)

System/Unit: FAN - Exhaust



Asset: EF8

AREA: REAR RR

Unit Data		
	Design	Actual
MFG	CAPTIVE-AIRE	CAPTIVE-AIRE
Model Num	DR12HFA	DR12HFA
Serial Num	-	2560215
Type	CENTRIFUGAL	CENTRIFUGAL
Configuration	DOWNBLAST	DOWNBLAST

Test Data		
	Design	Actual
CFM	400	376
Fan RPM	1127	DIRECT DRIVE
Fan Rotation	-	CCW
Motor RPM	-	DIRECT DRIVE
System SetPt	-	MAX ON VSC
RL Voltage	-	112.3
RL Amperage	-	.78
Total ESP	0.289"	.66"
Fan Inlet SP	-	-.66
Fan Discharge SP	-	NA

Motor Data		
	Design	Actual
Motor MFG	-	HSSA
Frame	-	42Y
Horsepower	0.18	1/6
Motor Rpm	-	1625
Phase	1	1
Voltage (rated)	115	115
Amperage (rated)	-	1.9
Service Factor	-	1.0

Completed By: Robert Sepeda on 02/23/2017

Notes:

Diffuser Ret/Exh (GRD)

EF8 / REAR RR

Asset	Area Served	Type	Size	DESIGN CFM	AK	CFM(1)	CFM(2)	FINAL CFM	% to design
EGRD1	REAR RR	F2	8X8	200		165	189	189	94.5
EGRD2	REAR RR	F2	8X8	200		160	187	187	93.5

Completed By: Robert Sepeda on 02/23/2017

Asset	Area Served	Notes



National TAB

Project: KROGER 034-451 EULESS, TX (EXPANSION REMODEL)



System/Unit: Kitchen Hood Type I

Asset: HD1

AREA:

Unit Data		
	Design	Actual
MFG	CAPTIVE-AIRE	CAPTIVE-AIRE
Model Num	ND-2-PSP-F	ND-2-PSP-F
Job / Serial Num	-	2560215
Type	TYPE I CANOPY	TYPE I CANOPY
Hood length	192	190
Hood Width	60	58 3/4
Supply Plenum Type	PSP	PSP
Supply Plenum Width	12	12
Supply Plenum Length	204	204

Test Data Exhaust		
	Design	Actual
Filter Type	BAFFLE	BAFFLE
Filter Size 1	16X16	1616
Filter Qty 1	12	12
Filter AK factor size 1	1.62	1.62
Filter Total AK Area	19.44	19.44
Filter1 FPM	-	115
Filter2 FPM	-	141
Filter3 FPM	-	152
Filter4 FPM	-	157
Filter5 FPM	-	149
Filter6 FPM	-	142
Filter7 FPM	-	150
Filter8 FPM	-	156
Filter9 FPM	-	163
Filter10 FPM	-	171
Filter11 FPM	-	153
Filter12 FPM	-	147
Filter High FPM(corr)	-	171
Filter Low FPM (corr)	-	115
Filter Ave FPM(corr)	-	150
CFM	2800	2916

Cooking Equipment		
	Design	Actual
Item 1	-	PRESSURE FRYER
Item 2	-	PRESSURE OVEN
Item 3	-	-
Item 4	-	-
Item 5	-	-

Test Data Supply		
	Design	Actual
AK factor	1	1
Total AK Area	17	17
Kv factor (Vel)	0.87	.87
Num of Readings	-	18
Reading1 FPM	-	118
Reading2 FPM	-	104
Reading3 FPM	-	124
Reading4 FPM	-	121
Reading5 FPM	-	111
Reading6 FPM	-	57
Reading7 FPM	-	89
Reading8 FPM	-	129
Reading9 FPM	-	123
Reading10 FPM	-	102
Reading11 FPM	-	98
Reading12 FPM	-	67
Reading13 FPM	-	96
Reading14 FPM	-	102/106/109/111 /124
High FPM(corr)	-	129
Low FPM(corr)	-	57
Ave FPM(corr)	-	105
CFM	1680	1553

Performance Data		
	Design	Actual
Exh-Supply Net CFM	1120	1363
Smoke Generation Type	-	45 SECOND SMOKE CARTRIDGE
Cooking Equip Heat On	-	YES
Hood Capture %	-	100
Space Offset Temp Riser 1	-	-
Space Offset Temp Riser 2	-	-
Riser Temp F (idle) Riser 1	-	-
Riser Temp F (idle) Riser 2	-	-
Ambient Room Temp	-	-

General		
	Design	Actual
Third Party Witness	-	RYAN GODWIN
Third Party Company	-	-



National TAB

Project: KROGER 034-451 EULESS, TX (EXPANSION REMODEL)

System/Unit: Kitchen Hood Type I



General		
	Design	Actual
Tech Witness	-	ROBERT SEPEDA
Tech Company	-	NATIONAL TAB

Completed By: Robert Sepeda on 02/23/2017

Notes:



National TAB

Project: KROGER 034-451 EULESS, TX (EXPANSION REMODEL)

System/Unit: Kitchen Hood Type II



Asset: HD(Type2)2

AREA:

Unit Data		
	Design	Actual
MFG	CAPTIVE-AIRE	CAPTIVE-AIRE
Model Num	4824 VHB-G	4824 VHB-G
Serial Num	-	2560215
Type	TYPE II CANOPY	TYPE II CANOPY
Hood length	48	45 1/2
Hood Width	48	45 1/2

Test Data		
	Design	Actual
Exhaust CFM	600	619

Completed By: Robert Sepeda on 02/23/2017

Notes: