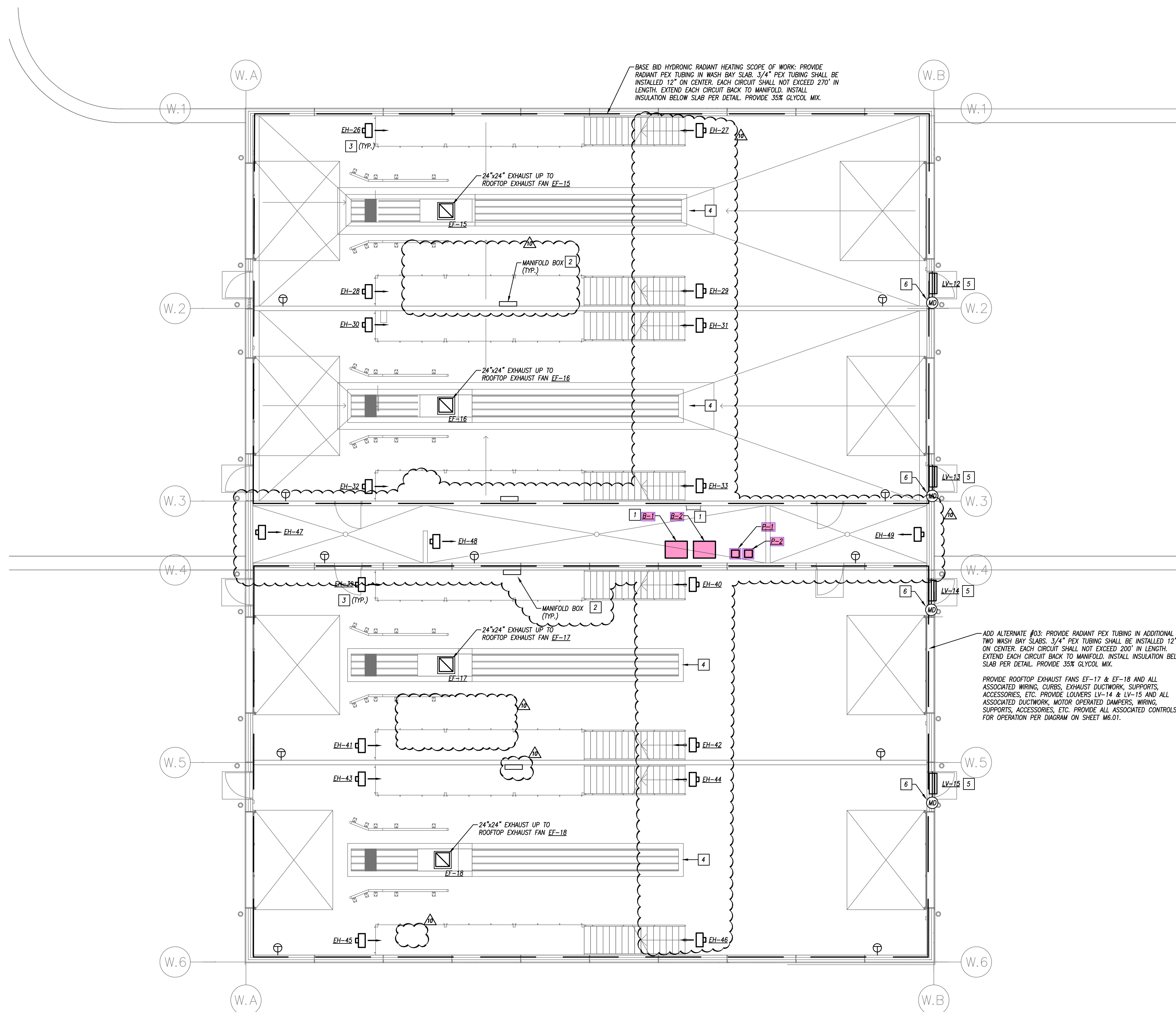


GENERAL HVAC NOTES

1. REFER TO GENERAL NOTES ON MEP COVER SHEET FOR ADDITIONAL REQUIREMENTS OF WORK.
2. ROUND BRANCH DUCT RUNOUTS AND FLEXIBLE DUCT SHALL BE THE SAME SIZE AS THE DIFFUSER NECK UNLESS NOTED OTHERWISE.
3. MAXIMUM FLEXIBLE DUCT LENGTH SHALL BE 5'-0".
4. ALL RUNOUTS TO TERMINAL BOXES SHALL BE ONE SIZE LARGER THAN BOX INLETS UNLESS NOTED OTHERWISE.
5. ALL AIR DISTRIBUTION DEVICES SHALL HAVE LOCKABLE VOLUME CONTROL DEVICES.
6. ALL 90 DEGREE TURNING ELBOWS SHALL BE SMOOTH ROUND OR SQUARE WITH TURNING VANES.
7. DUCT SIZES SHOWN ON PLANS ARE INSIDE FREE AREA.
8. PROVIDE ACCESS DOORS IN DUCTS AHEAD OF ALL AUTOMATIC, FIRE, AND SMOKE DAMPERS.
9. FOR BALANCING THE OUTSIDE AIRFLOW QUANTITIES, REFER TO HVAC SCHEDULES.
10. ALL DUCTWORK, EQUIPMENT, SUPPORTS, ACCESSORIES, ETC. ASSOCIATED WITH WASHBAY SHALL BE NEMA#4 RATED, WASHDOWN RATED, CORROSION RESISTANT, STAINLESS STEEL, ETC.

HVAC PLAN KEYED NOTES

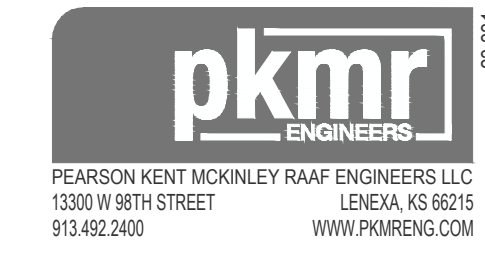
1. BOILER AND ASSOCIATED PUMPS TO SERVE WASH BAY RADIANT FLOOR SYSTEM AND FUTURE WASH BAY RADIANT FLOOR SYSTEM EQUIPMENT SHALL BE SIZED AND COMPATIBLE WITH 45% GLYCOL SOLUTION.
2. WALL-MOUNTED MANIFOLD BOX FOR EACH RADIANT HEATING ZONE. EACH ZONE SHALL HAVE AN IN-SLAB TEMPERATURE SENSOR. EACH WASH BAY SHALL HAVE ITS OWN RADIANT FLOOR ZONE.
3. ELECTRIC HEATER SHALL BE SUSPENDED ABOVE ELEVATED WALKWAY.
4. RADIANT FLOOR SYSTEM SHALL BE COORDINATED AROUND TRENCH DRAINS AND UNDERDRAINAGE WASH SYSTEM.
5. COORDINATE EXACT LOUVER LOCATION WITH ARCHITECT.
6. INTERLOCK, MOTORIZED DAMPERS ON INTAKE LOUVER WITH CO/NO MONITORING SYSTEM AND ASSOCIATED EXHAUST FAN DAMPER SHALL OPEN UPON ACTIVATION OF FAN.



WASH BAY - ENLARGED PLAN HVAC
1/8" = 1'-0"

**MUNICIPAL SERVICES OPERATIONS CAMPUS -
PHASE 1: MSO**

Issued:	4 Nov. 2024
AD07:	13 Dec. 2024
AD08:	10 Jan. 2025
AD09:	07 Feb. 2025
100%CD/AD10	03 MAR. 2025
Scale:	AS NOTED
Drawn:	KD, KE, CO
Checked:	KZ, DD
Job:	23041



M3.11