

LEGEND	
	SUPPLY AIR
	RETURN AIR
	MANUAL BALANCE DAMPER
	GAS
	GAS VALVE
	MOTOR
	THERMOSTAT (MOUNT 6'-0" UP, UNLESS OTHERWISE NOTED) SEE CONTROL DIAGRAM, DRAWING M2.2.
	SENSOR FOR THERMOSTAT, SEE CONTROL DIAGRAM, DRAWING M2.2. (MOUNT 6'-0" UP ON NEAR OF COLUMN)
	KEYED NOTE NUMBER
	AHU AIR HANDLING UNIT
	CFM CUBIC FEET PER MINUTE
	CU CONDENSING UNIT
	EF EXHAUST FAN
	EH ENTRANCE HEATER
	EWH ELECTRIC WALL HEATER
	SAD SUPPLY AIR DIFFUSER
	SAD SUPPLY AIR GRILLE
	SAR SUPPLY AIR REGISTER
	SF SUPPLY FAN
	RA RETURN AIR GRILLE
	RTU ROOF TOP UNIT
	UH UNIT HEATER

NOTES	
1	ALL WORK SHOWN SHALL COMPLY WITH ALL NATIONAL, STATE AND LOCAL CODES, ORDINANCES, ETC.
2	SEE ALL OTHER DRAWINGS AND WALGREENS SPECIFICATIONS FOR ADDITIONAL WORK OR CLARIFICATION OF NECESSARY WORK.
3	ALL FRESH AIR INTAKES ON ROOF SHALL BE LOCATED A MINIMUM OF 15'-0" AWAY FROM ANY EXHAUST DUCT, BLOWER DISCHARGE, PLUMBING, ETC.
4	INAC ROOF-TOP UNIT TO INCLUDE FLEXIBLE CONNECTIONS AND TURN WANS. OUTSIDE AIR INTAKE TO BE SIZED FOR A MINIMUM OF 100% OUTSIDE AIR FOR ECONOMIZER SYSTEMS.
5	ALL DUCTWORK TO BE GALVANIZED SHEET METAL (LINED DUCTWORK WILL NOT BE ACCEPTED).
6	EACH INAC UNIT TO HAVE ITS OWN CONTROLS. REFER TO M2.2.
7	NOT USED
8	PROVIDE FLUE TO ROOF (WITH WEATHER CAP) FOR GAS FIRED WATER HEATER IF APPLICABLE. SEE DETAIL 2/4/2.1.
9	INAC UNITS MUST BE INSTALLED LEVEL ON ROOF.
10	THERMOSTAT SENSOR WIRING TO BE RUN INSIDE PIPE COLUMNS.
11	DO NOT INSTALL SUPPLY AIR DIFFUSERS IN CEILING PANEL ADJACENT TO ROW OF LIGHT FIXTURES. COORDINATE DIFFUSERS WITH REFLECTED CEILING PLAN ON DRAWING A1.2.
12	DUCT LENGTH NOT TO EXCEED A MAXIMUM OF 7'-0". USE ONLY ON FRESH SUPPLY AIR RUNS OFF FROM BRANCH DUCT TO SUPPLY AIR DIFFUSERS, AND 3'-0" FROM THE RETURN AIR GRILLE TO THE METAL DUCTWORK. FOR ROOMS AND ZONE DUCTS, TURNING ARE NOT ALLOWED - OFFSET ANGLES SHALL BE KEPT TO A MINIMUM. SEE DETAIL 6 & 8/4/2.1.
13	SUPPLY AND/OR RETURN AIR CEILING PLenums WILL NOT BE ACCEPTED.
14	DO NOT INSTALL UNIT HEATER ABOVE STOCK ROOM SHELVING.
15	ELECTRIC WALL HEATERS (EWH) AND ELECTRIC UNIT HEATERS (EUH) ARE PROVIDED UNDER THE ELECTRICAL CONTRACT, SHOWN HERE FOR HVAC INFORMATION ONLY.
16	MECHANICAL SYSTEMS PIPING AND DUCT WORK TO BE HELD TO 1/4" A.F.F. (MINIMUM) COORDINATE WITH STOCK ROOM SHELVING.
17	SEE ARCHITECTURAL DRAWINGS FOR HVAC ROOF CURB, ROOF-TOP COMPRESSOR CURB AND SUPPORT DETAILS.
18	ALL NON-AIR CONDITIONING COMPRESSORS LISTED WITH REFRIGERANT PIPING SHALL BE FURNISHED BY WALGREENS.
19	PAINT THE INTERIOR SURFACE OF DUCTS WHERE USABLE THROUGH GRILLES, DIFFUSERS, ETC. WITH FLAT, "DM" (DIRECT TO METAL), NON-SPECULAR BLACK PAINT.

DUCT SIZING	
-	ROUND OR SQUARE DUCT SHAPES MAY BE USED PROVIDED THAT THE FOLLOWING VELOCITIES ARE MAINTAINED.
-	MAIN DUCTS, 1000 FPM MAXIMUM (LINES NOT DIRECTLY CONNECTED TO A SUPPLY OR RETURN OUTLET)
-	BRANCH DUCTS, 750 FPM MAXIMUM.

MECHANICAL KEYED NOTES	
1	INAC ROOF-TOP UNIT, SEE GENERAL NOTES (ABOVE) AND SCHEDULE ON DRAWING M2.2 FOR ADDITIONAL INFORMATION.
2	S.A.D., CFM AND SIZE AS NOTED. S.A.D. SHALL HAVE A TOTAL STATIC PRESSURE DROP OF 0.1" OR LESS. SEE DETAIL 1/4/2.1.
3	STOCK ROOM ROOF-TOP HVAC UNIT, SEE DETAIL 7/4/2.1.
4	ROOF EXHAUST FAN, REFER TO 4/M2.1.
5	S.A.C., CFM AND SIZE AS NOTED. S.A.C. SHALL HAVE A TOTAL STATIC PRESSURE DROP OF 0.1" OR LESS. SEE DETAIL 2/4/2.1.
6	R.A.C., CFM AND SIZE AS NOTED. R.A.C. SHALL HAVE A TOTAL STATIC PRESSURE DROP OF 0.1" OR LESS. SEE DETAIL 3 AND 6/M2.1.
7	GAS SERVICE AND METER.
8	ROOF-TOP ENCLOSED BLOWER/DRYTRANCE HEATER, INCLUDE FLEXIBLE CONNECTIONS TO ROOF RETURN AIR (NO OUTSIDE AIR) WITH SENSOR AT ENTRANCE AND THERMOSTAT IN OFFICE.
9	GAS FIRED, POWER VENTED LINT HEATER (SEE SCHEDULE DWG. M2.2) BOTTOM 12'-2" THERMOSTAT MOUNTED ON UNIT (SEE AT 6' F7). PROVIDE GAS TO ROOF WITH WEATHER CAP. SEE DETAIL 2/4/2.1. ELECTRICAL, UNIT HEATER WILL BE FURNISHED BY ELECTRICAL CONTRACTOR.
10	ROOF-TOP CONDENSING UNIT FOR WALK-IN/COOLER/FREEZER.
11	PIPE PORTS FOR WALK-IN/COOLER/FREEZER CONDENSING UNIT REFRIGERANT AND ELECTRICAL LINES. SEE DETAIL 5/4/2.1.
12	ADJUST FRONT HORIZONTAL BARS TO AN ANGLE OF 45° SO THAT THE AIR FLOWS AWAY FROM THE WINDOW. THIS IS TO HELP PREVENT CONDENSATION ON THE GLASS IN HOT, HUMID CLIMATE CONDITIONS.
13	ELECTRIC WALL HEATER (EWH), SEE DRAWING E1.2 FOR MORE INFORMATION. COORDINATE OPENINGS WITH ALL TRADES AND D-1 FURNISHINGS.
14	ROOF-MOUNTED EXHAUST FAN - SEE DETAIL 7/4/2.1.
15	METAL S.A.C. IN CENTER OF CEILING TILE CLOSEST TO CONDENSING UNIT.
16	GAS AND ELECTRIC FEEDS SHALL BE ROUTED VERTICALLY WITHIN THE CURB. ANOTHER WORDS, NO HORIZONTAL PIPING ON ROOF.
17	EVAPORATIVE UNITS AT COOLER AND FREEZER.
18	HOT WATER HEATER IS NOT FIRE SEPARATED FROM THE MEANS OF EGRESS CORRIDOR, THUS AN ELECTRIC UNIT WILL BE USED AND NO FLUE IS REQUIRED.

DESIGN BASIS

COOLING 88°F DRY BULB (1% MEAN)
173°F WET BULB (1% MEAN)

HEATING 3°F DRY BULB (98% DRY)

MECHANICAL PLAN
SCALE: 1/8" = 1'-0"

PROJECT TITLE

DRAWINGS/SPECIFICATIONS BY:

- WALGREENS' CONSULTANT
- LANDLORD'S CONSULTANT

ALL CONSTRUCTION WORK, UNLESS NOTED OTHERWISE:

- WALGREENS' CONTRACTOR (T)
- LANDLORD'S CONTRACTOR (T)

STORE

NEW.....

REMODELING.....

OTHERS.....

Walgreens FACILITY
200 WILMOT ROAD DEERFIELD, IL 60015

NO.	DATE	BY	REVISIONS

CERTIFICATION AND SIGNATURE

I HAVE PREPARED OR CAUSED TO BE PREPARED UNDER MY DIRECT SUPERVISION, THE ATTACHED PLANS AND SPECIFICATIONS AND STATE THAT TO THE BEST OF MY KNOWLEDGE AND BELIEF AND TO THE EXTENT OF MY CONTRIBUTION, THEY COMPLY WITH ALL APPLICABLE CODES INCLUDING THE INTERNATIONAL BUILDING CODE (IBC), THE ILLINOIS ACCESSIBILITY CODE (IAC) AND THE ILLINOIS FIRE CODE (IFC).

MECHANICAL PLAN

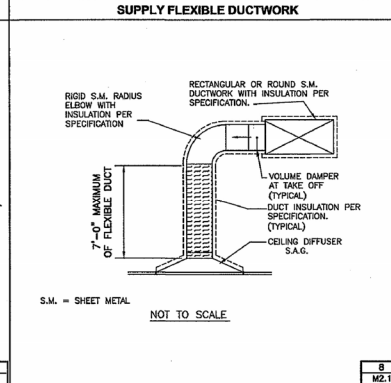
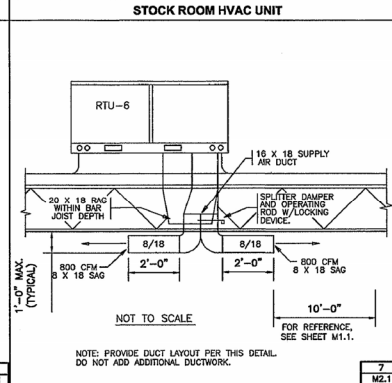
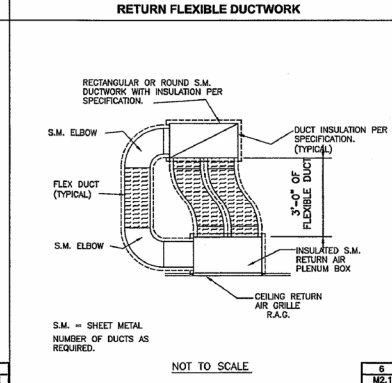
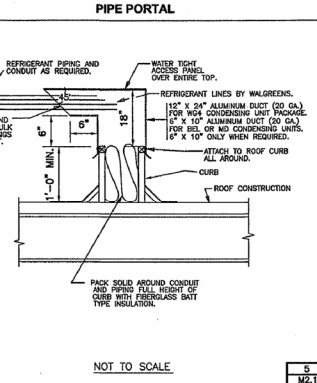
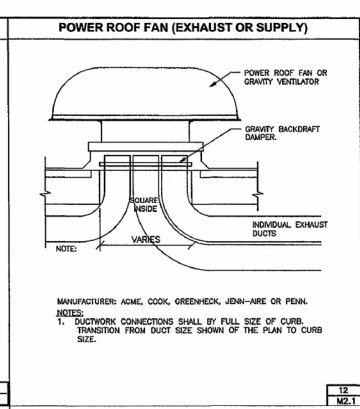
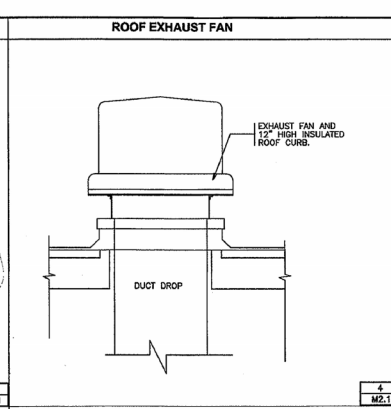
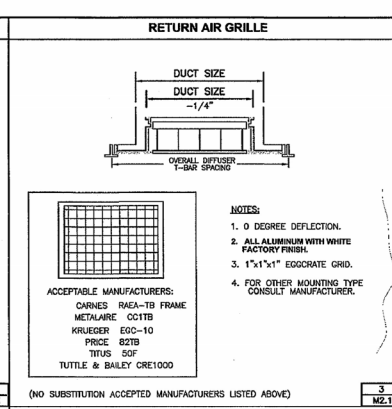
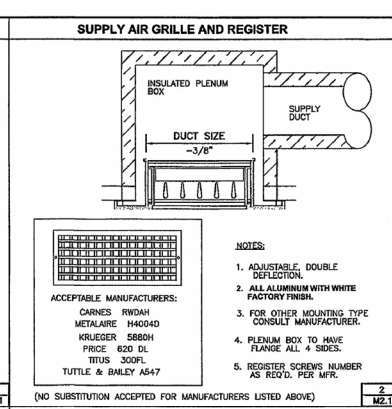
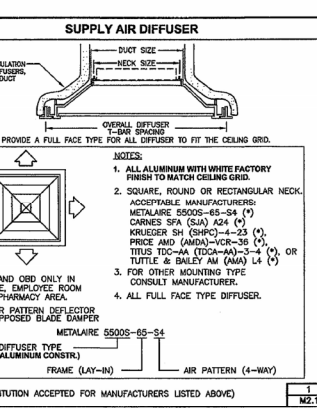
Walgreen
NORTHEAST CORNER OF LAKE ST. (ROUTE 1221 NORTH LAKE STREET)

PREFERRED DEVELOPER
141 W. JACKSON #350

BASE TEN ARCHITECTS, INC. STORE NO. 06937
475 W. State Street
Suite 201
La Grange, IL 60515
T 708.215.8802
F 708.215.8005
bt10.com

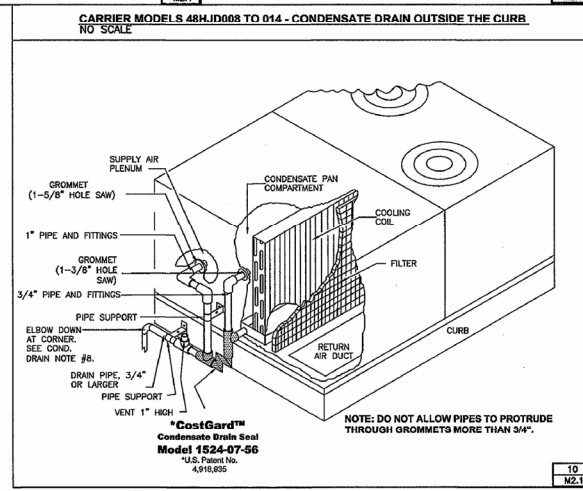
DATE: 8-17-02
DATE: 8-15-02

AURORA, ILLINOIS



TYPICAL CONDENSATE DRAIN NOTES:

1. FURNISH AND INSTALL 3/4" (MINIMUM) CONDENSATE DRAIN PIPE.
2. COSTGARD DEVICE BY TRENT TECHNOLOGIES, INC. TYLER, TEXAS (903)509-4843.
3. CONDENSATE PIPING TO BE PVC SCHEDULE 40, IN BOTH THE BASIC AND ALTERNATE DRAIN SYSTEMS, ELBOW DOWN, ROOFING CONTRACTOR TO PROVIDE SPLASH PROVISION.
4. DO NOT INSTALL ANY PIPING THAT WILL INTERFERE WITH REQUIRED UNIT ACCESS.
5. RUN BELOW ROOF IF CODE DOES NOT ALLOW DISCHARGING ONTO THE ROOF.
6. EITHER THE BASIC OR ALTERNATE SYSTEM MAY BE USED EXCEPT THAT THE ALTERNATE SYSTEM MUST BE USED IN JURISDICTIONS WHERE PIPING ABOVE THE ROOF IS PROHIBITED. TRANE UNITS AND SOME CARRIER UNITS (13 AND ABOVE ARE NOT DELIVERED WITH DRAIN CONNECTIONS IN THE BOTTOM OF THE PAN, THUS DRAIN CONNECTIONS FOR THESE UNITS MUST BE MADE IN THE FIELD. DETAILED INSTALLATION INSTRUCTIONS ARE PROVIDED WITH EACH SHIPMENT OF CostGard DRAIN SEAL.
7. ALL PIPING SHALL BE INSULATED INCLUDING BRANCH, MAIN, VENT AND CostGard.
8. RUN CONDENSATE PIPING 3" BEYOND ROOF CURB AND DISCHARGE IN THE DIRECTION OF THE ROOF PITCH. UTILIZE ANY OF FOUR CORNERS TO SO CONDENSATE RUNS AWAY FROM UNIT.



PROJECT TYPE

DRAWINGS/SPECIFICATIONS BY:

- WALGREENS' CONSULTANT
- LANDLORD'S CONSULTANT

ALL CONSTRUCTION WORK, UNLESS NOTED:

- WALGREENS' CONTRACTOR
- LANDLORD'S CONTRACTOR

STORE

NEW.....

REMODELING.....

OTHERS..... NEW.....

Walgreen FACILITY

200 WILMOT ROAD DEERFIELD, IL 60015

NO.	DATE	BY	REVISIONS

CERTIFICATION AND

I HAVE PREPARED, OR CAUSED TO BE PREPARED UNDER MY SUPERVISION, THE ATTACHED PLANS AND SPECIFICATIONS AND STATE THAT, TO THE BEST OF MY KNOWLEDGE AND BELIEF AND TO THE EXTENT OF MY CONTRACTUAL OBLIGATION, THEY ARE IN CONFORMANCE WITH ALL APPLICABLE CODES INCLUDING THE ENVIRONMENTAL BARRIERS ACT (EBA) LOCAL AND THE ILLINOIS ACCESSIBILITY CODE (78 ILL. ADM. CODE 600).

DETAILS

Walgreen

NORTHEAST CORNER OF: LAKE ST. (ROUTE 3)

1221 NORTH LAKE STREET

PREFERRED DEVELOPE

141 W. JACKSON #3540 C

BASE TEN ARCHITECTS, INC. STORE NO. 06937

475 W. 55th Street Suite 309 La Grange, IL 60525
T 708.215.8002 F 708.215.8005 b10a.com

DATE: 5-17-02

AURORA, ILLIN

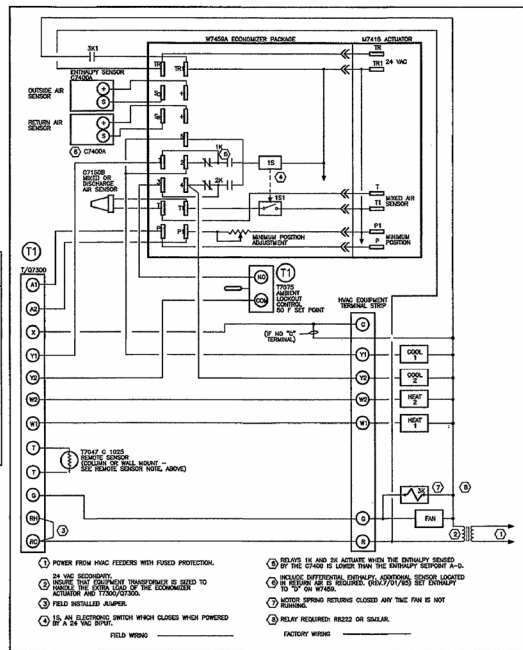
NATIONAL ACCOUNTS FOR ROOF TOP UNIT

I. HVAC UNITS

A. WALGREEN CO. SHALL HAVE TRANE EQUIPMENT INSTALLED ON ALL PROJECTS WEST OF THE MISSISSIPPI RIVER AND CONNECTICUT, LOUISIANA, MAINE, MASSACHUSETTS, MICHIGAN, MINNESOTA, MISSISSIPPI, NEW HAMPSHIRE, NEW JERSEY, NEW YORK, NORTH CAROLINA, OHIO, RHODE ISLAND, VERMONT, VIRGINIA, AND WISCONSIN. WALGREEN SHALL HAVE CARRIER EQUIPMENT INSTALLED ON ALL PROJECTS EAST OF THE MISSISSIPPI EXCEPT THOSE LISTED ABOVE.

NOTE: ALL ROOF TOP HVAC UNITS (TRANE & CARRIER) TO HAVE ECONOMIZER WITH CONTROLS UNLESS DELETED BY ERV NOTES.

- FOR CARRIER EQUIPMENT, CALL CARRIER NATIONAL ACCOUNT TEAM @ (800)690-1083 TO COORDINATE YOUR PURCHASE ORDER AGREEMENT AND EQUIPMENT DELIVERY.
- FOR TRANE EQUIPMENT, CALL TRANE NATIONAL ACCOUNT TEAM @ (800)453-6954 TO COORDINATE YOUR PURCHASE ORDER AGREEMENT AND EQUIPMENT DELIVERY.



- POWER FROM HVAC FEEDERS WITH FUSED PROTECTION.
- 24 VAC SUPPLY.
- REMOVE THE ECONOMIZER TRANSFORMER IS SERVED TO THE ECONOMIZER AND T7300/0202.
- FIELD INSTALLED SENSOR.
- IF A ELECTRIC SWITCH WHICH CLOSURES WHICH POWERED BY 24 VAC SUPPLY.
- REMOVE 1/8" AIR IN ACTUATOR WHEN THE REMOTE SENSOR BY THE CHOICE IS LOWER THAN THE REMOTE SENSOR P.D.
- REMOVE DIFFERENTIAL ENTHALPY SENSORS, SENSOR LOCATED IN 10' UP ON RY-80.
- NOTICE THESE WIRING CLOSED ANY TIME FAN IS NOT RUNNING.
- RELAY REQUIRED: R3022 OR S3418.
- FIELD WIRING
- FACTORY WIRING

T7300/02300 DEFFATING ECONOMIZER MINIMUM POSITION DURING UNOCCUPIED IN A TWO STAGE COOLING SYSTEM WITH DIFFERENTIAL ENTHALPY CHANGEOVER USING U7459A/07450 WITH AN U7419 ACTUATOR.

HVAC CONTROL DIAGRAM (EACH UNIT)
NOTE: ABOVE WIRING DIAGRAM ARRANGEMENT IS APPLICABLE FOR PROJECTS WITH THE ECONOMIZER SYSTEM.

COOLING / HEATING PROGRAM

COOLING

OCCUPIED (8 A.M. - 10 P.M.)		UNOCCUPIED (10 P.M. - 8 A.M.)	
1) SALES	78°F AND 55% RH (MAX)	1) SALES	78°F AND 55% RH (MAX)
2) PHARMACY & PATIENT SEATING	72°F	2) PHARMACY & PATIENT SEATING	76°F
3) GENERAL STOCK	78°F	3) GENERAL STOCK	60°F

HEATING

OCCUPIED (8 A.M. - 10 P.M.)		UNOCCUPIED (10 P.M. - 8 A.M.)	
1) SALES	70°F	1) SALES	60°F
ENTRANCE HEATER	70°F	ENTRANCE HEATER	50°F
2) PHARMACY & PATIENT SEATING	72°F	2) PHARMACY & PATIENT SEATING	66°F
3) GENERAL STOCK	70°F	3) GENERAL STOCK	60°F

BILL OF MATERIAL			
THE FOLLOWING CONTROLS TO BE FURNISHED BY TEMPERATURE CONTROL CONTRACTOR			
NO.	QUANTITY	MAKE	REMARKS
T1	1 (PER UNIT)	HONEYWELL T707981028 TRANE BAYENS019B	-20° F TO 80° F SCALE 1 DEGREE DIFFERENCE (USE AS COMPRESSOR LOCKOUT SET AT 50° F).
T2	1 (PER UNIT)	HONEYWELL T7300F2002 MODEL Q7300A2016 TRANE BAYENS019B	NOTE: FOR PHARMACY UNIT USE T7300F2010/Q7300A2016 (SWITCHING BASE)
	1 (PER UNIT)	HONEYWELL T7047C1025 TRANE BAYENS017B	REMOTE SENSOR (NOTE: EXCEPT PHARMACY UNIT)
	1	HONEYWELL T7022A1010 TRANE BAYENS016A	DUCT MOUNTED TEMPERATURE SENSOR

REMOTE SENSOR NOTE:

REMOTE SENSOR (T7047C1025) IS TO BE MOUNTED ON COLUMN (OR WALL), 6'-0" UP, WITH THE SUBBASE (T707300) LOCATED IN OFFICE. CONNECT REMOTE SENSOR TO T-1 TERMINALS OF SUBBASE VIA TWO (2) #18 AWG SHIELDED, TWISTED PAIR WIRES. BELDEN 8719. SEE CONTROL WIRING DIAGRAM. (DO NOT USE THE REMOTE SENSOR OPTION ON THE PHARMACY UNIT).

HONEYWELL T7300'S LABELED WITH CARRIER LOGO IS ACCEPTABLE. TRANE EQUIPMENT WILL UTILIZE TRANE TEMPERATURE CONTROL. CHECK WITH LOCAL EQUIPMENT DEALER TO VERIFY MODEL NUMBERS.
TRANE TEMPERATURE CONTROL UNIT MUST BE REPROGRAMMED TO OPERATE ACCURATELY WITH REMOTE SENSOR.

PROJECT TYPE

DRAWINGS/SPECIFICATIONS BY:
 WALGREEN'S CONSULTANT
 LANDLORD'S CONSULTANT

ALL CONSTRUCTION WORK, UNLESS NOTED OTHERWISE, SHALL BE IN ACCORDANCE WITH THE LATEST EDITIONS OF THE FOLLOWING:
 WALGREEN'S CONTRACTOR (T) (U)
 LANDLORD'S CONTRACTOR (T) (U)

STORE

NEW.....
 REMODELING...
 OTHERS... NEW

Walgreen FACILITY
 200 WILMOT ROAD DEERFIELD, IL 60015

NO. DATE BY

REVISIONS

CERTIFICATION AND

I HAVE PREPARED OR CAUSED TO BE PREPARED, UNDER MY DIRECT SUPERVISION, THE ATTACHED PLANS AND SPECIFICATIONS AND STATE THAT, TO THE BEST OF MY KNOWLEDGE AND BELIEF AND TO THE EXTENT OF MY CONTRACTUAL OBLIGATION, THEY ARE IN COMPLIANCE WITH ALL APPLICABLE CODES INCLUDING THE ENVIRONMENTAL SERVICES ACT (EISA) AND THE ILLINOIS ACCESSIBILITY CODE (I) ILL. ADM. CODE 440.

HVAC CONTROL WIRING D

Walgre
 NORTHEAST CORNER OF: LAKE ST. (ROUTE 1)
 1221 NORTH LAKE STREET

PREFERRED DEVELOPME
 141 W. JACKSON #3540 C

BASE TEN ARCHITECTS, INC. STORE NO. 06937

DATE: 5-17-02
 475 W. 55th Street
 Suite 209
 Oak Grove, IL 60155
 T 708.215.8002
 F 708.215.8003
 b1@com

AURORA, ILLIN

ESTIMATE	LOCAL TIME	PEAK LOAD	LOCAL TIME
ESTIMATE	LOCAL TIME	PEAK LOAD	LOCAL TIME
ESTIMATE	LOCAL TIME	PEAK LOAD	LOCAL TIME
ESTIMATE	LOCAL TIME	PEAK LOAD	LOCAL TIME

ESTIMATE	LOCAL TIME	PEAK LOAD	LOCAL TIME
ESTIMATE	LOCAL TIME	PEAK LOAD	LOCAL TIME
ESTIMATE	LOCAL TIME	PEAK LOAD	LOCAL TIME
ESTIMATE	LOCAL TIME	PEAK LOAD	LOCAL TIME

ESTIMATE	LOCAL TIME	PEAK LOAD	LOCAL TIME
ESTIMATE	LOCAL TIME	PEAK LOAD	LOCAL TIME
ESTIMATE	LOCAL TIME	PEAK LOAD	LOCAL TIME
ESTIMATE	LOCAL TIME	PEAK LOAD	LOCAL TIME

ESTIMATE	LOCAL TIME	PEAK LOAD	LOCAL TIME
ESTIMATE	LOCAL TIME	PEAK LOAD	LOCAL TIME
ESTIMATE	LOCAL TIME	PEAK LOAD	LOCAL TIME
ESTIMATE	LOCAL TIME	PEAK LOAD	LOCAL TIME

FAN SCHEDULE

UNIT	AREA SERVED	WALG MIN CFM	UNIT CFM	SP	MOTOR HP	VOLTS/PHASE	RPM	MAKE AND MODEL	REMARKS	
EF-1	1-HOUR PHOTO	1000	1000	.375	1/4	455	120	1	1725 GREENHECK 9-100-AX-QD	CONTROLLED BY LIGHTING CIRCUIT, INTERNAL DISC. SWITCH BACKDRAFT DAMPER, SPEED CONTROL, ROOF CURB
EF-2	EMPLOYEE ROOM	300	314	.375	-	121	120	1	1550 GREENHECK 8-90-DE0X-0-D	CONTROLLED BY WALL SWITCH, INTERNAL DISC. SWITCH, BACKDRAFT DAMPER, SPEED CONTROL, ROOF CURB
EF-3	MEN'S & WOMEN'S	500	493	.375	1/8	81	120	1	1300 GREENHECK 8-90-DE0X-0-Q	CONTROLLED BY LIGHTING CIRCUIT, INTERNAL DISC. SWITCH BACKDRAFT DAMPER, SPEED CONTROL, ROOF CURB

PROJECT TYPE
 DRAWINGS/SPECIFICATIONS BY:
 WALGREEN'S CONSULTANT
 LANDLORD'S CONSULTANT

ALL CONSTRUCTION WORK, UNLESS NOTED OTHERWISE, SHALL BE THE RESPONSIBILITY OF THE CONTRACTOR.
 WALGREEN'S CONTRACTOR
 LANDLORD'S CONTRACTOR

STORE
 NEW _____
 REMODELING _____
 OTHERS _____

Walgreen FACILITY
 205 WILMOT ROAD DEERFIELD, IL 60015

NATIONAL ACCOUNTS FOR ROOF TOP UNIT

- I. HVAC UNITS
- A. WALGREEN CO. SHALL HAVE TRANE EQUIPMENT INSTALLED ON ALL PROJECTS WEST OF THE MISSISSIPPI RIVER AND LOUISIANA, MAINE, MINNESOTA, MISSISSIPPI, NEW HAMPSHIRE, NORTH CAROLINA, OHIO, VERMONT, VIRGINIA AND WISCONSIN. CARRIER EQUIPMENT INSTALLED ON ALL PROJECTS EAST OF THE MISSISSIPPI RIVER EXCEPT THOSE LISTED ABOVE.
- FOR CARRIER EQUIPMENT, CALL CARRIER NATIONAL ACCOUNT TEAM @ (800)690-1083 TO COORDINATE YOUR PURCHASE ORDER AGREEMENT AND EQUIPMENT DELIVERY.
 - FOR TRANE EQUIPMENT, CALL TRANE NATIONAL ACCOUNT TEAM @ (800)453-6954 TO COORDINATE YOUR PURCHASE ORDER AGREEMENT AND EQUIPMENT DELIVERY.

HEATING/COOLING ROOF TOP UNIT SCHEDULE

NOTE: AT 95 DEG. CONDENSER ENTRANCE AIR TEMPERATURE & AIR CONDITIONS.

UNIT	AREA SERVED	BLOWER			COMPRESSOR				AIR COOLED CONDENSER				GAS FIRED FURNACE		MNL. OPENING SIZE (FRONT/BACK) x (WIDTH)	WEIGHT WITH ECONO.									
		CFM	D.A.L. C.F.M.	MOTOR HP	ELECT. REQ. VOLTS PHASE	COOLING CAPACITY MBH	MANF. CAPACITY NOM. TONS	ACTUAL TONS	F.E. HP	HP	ELECT. REQ. VOLTS PHASE	MIN. AMPS	MAX. GCR.	INPUT			OUTPUT								
U-1	FRONT GENERAL SALES NEAR ENTRY	3000B	3000	7.5	208	2	12/1.4	208	3	90,000	7.5	7.5	2/1.4	.25	208	3	36.2	45	224	184	1	1	34" x 47"	1000	
U-2	FRONT GENERAL SALES NEAR PHOTO	3000B	3000	7.5	208	3	2/1.2	208	3	90,000	7.5	7.5	2/1.4	.25	208	3	38.2	45	224	184	1	1	34" x 47"	1000	
U-3	REAR GENERAL SALES NEAR EXIT	3600B	3600	7.5	208	3	2/1.2	208	3	90,000	7.5	7.5	2/1.4	.25	208	3	38.2	45	224	184	1	1	34" x 47"	1000	
U-4	REAR GENERAL SALES NEAR EMPLOYEE ROOM	3600B	3600	7.5	208	3	2/1.2	208	3	90,000	7.5	7.5	2/1.4	.25	208	3	38.2	45	224	184	1	1	34" x 47"	1000	
U-5	GENERAL STOCK	1600B	1600	.83	208	3	13.5	208	3	47,000	4	3.92	0.7	.25	208	208	3	22.5	30	115	93	-	-	26" x 34"	889
U-6	PHARMACY PATIENT SEATING EMPLOYEE ROOM	2000B	2000	1.0	208	3	17.3	208	3	60,000	5	5.0	1.5	.25	208	208	3	28.9	35	115	93	-	-	26" x 34"	709

- CARRIER IS THE ONLY ACCEPTABLE UNIT FOR THIS PROJECT (BASED ON STATE)
- PROVIDE FIVE (5) YEAR WARRANTY ON COMPRESSORS.
- PROVIDE TEN (10) YEAR WARRANTY ON HEAT EXCHANGERS.

- SEE SPECIFICATION FOR WARRANTY REQUIREMENTS.
- PROVIDE 14" HIGH CURB.
- PROVIDE 100% ECONOMIZER.
- PROVIDE T.A. FILTER.
- PROVIDE SMOKE DETECTOR.

GAS FIRED STOCK & ENTRANCE HEATER SCHEDULE

UNIT	AREA SERVED	CFM	BTU/HR RATING		ELECTRICAL DATA		RPM	TYPE OF UNIT	MAKE AND MODEL
			INPUT	OUTPUT	MOTOR HP	VOLTS/PHASE			
UH-1	RECEIVING	1230	100,000		1/30	120/1	3.7	1050	REZNOV #SCA-100 198 LBS./W/2 STAGE GAS VALVE
EH-1	ENTRANCE	2400 @ 0.25"E.S.P.	150,000	-	1.5	208/3	10	-	REZNOV HRPB-150, 2 STAGE GAS BURNER** 66.8" TEMP. RISE, THROUGHWAY FILTER. OUTDOOR, GRAVITY VENTED, DOWNTURN PLENUM 2 POSITION MOTORIZED DAMPER, RAIN BAFFLE 16" CURB FOR DT FLENUM

ACCEPTABLE MANUFACTURERS FOR UNIT HEATER: REZNOV, LENNOX OR TRANE.
 ACCEPTABLE MANUFACTURERS FOR ENTRANCE HEATER: REZNOV HRPB-150 AND TRANE-GRNC 015.
 ** PROVIDE WITH 409 STAINLESS STEEL HEAT EXCHANGER, ELECTRONIC MODULATION BURNER AND 10 YEARS WARRANTY.

ELECTRIC WALL UNIT HEATER SCHEDULE

UNIT	AREA SERVED	BTU/HR	CFM	WATTS	AMPS	MOTOR		RPM	TYPE	MAKE AND MODEL
						HP	VOLTS/PHASE			
EWH-1	MEN'S	6842 OUTPUT	100	2000	9.6	-	208/1	-	ELEC. FAN, RECESS MTD. BOTTOM 1'-0" A.F.F.	QMARK #AWH-3208 W/BUILT-IN THERMOSTAT
EWH-2	WOMEN'S	6842 OUTPUT	100	2000	9.6	-	208/1	-	ELEC. FAN, RECESS MTD. BOTTOM 1'-0" A.F.F.	QMARK #AWH-3208 W/BUILT-IN THERMOSTAT
EWH-3	PASSAGE #1	13,650 OUTPUT	100	4000	19.2	-	208/1	-	ELEC. FAN, RECESS MTD. BOTTOM 1'-0" A.F.F.	QMARK #AWH-3408 W/BUILT-IN THERMOSTAT
EWH-4	EMPLOYEE ROOM	6842 OUTPUT	100	2000	9.6	-	208/1	-	ELEC. FAN, RECESS MTD. BOTTOM 1'-0" A.F.F.	QMARK #AWH-3208 W/BUILT-IN THERMOSTAT
EWH-5	PASSAGE #2	6842 OUTPUT	100	2000	9.6	-	208/1	-	ELEC. FAN, RECESS MTD. BOTTOM 1'-0" A.F.F.	QMARK #AWH-3208 W/BUILT-IN THERMOSTAT
EWH-6	SPRINKLER ROOM	6842 OUTPUT	100	2000	9.6	-	208/1	-	ELEC. FAN, RECESS MTD. BOTTOM 1'-0" A.F.F.	QMARK #AWH-3208 W/BUILT-IN THERMOSTAT
EWH-7	TRAINING	6842 OUTPUT	100	2000	9.6	-	208/1	-	ELEC. FAN, RECESS MTD. BOTTOM 1'-0" A.F.F.	QMARK #AWH-3208 W/BUILT-IN THERMOSTAT

I HAVE PREPARED OR CAUSED TO BE PREPARED UNDER MY CLOSE SUPERVISION THE ATTACHED PLANS AND SPECIFICATIONS AND STATE THAT TO THE BEST OF MY KNOWLEDGE AND BELIEF AND TO THE CREDIT OF MY CONTRACTOR, THEY COMPLY WITH ALL APPLICABLE CODES INCLUDING THE ENVIRONMENTAL SERVICES ACT (10/10/00) AND THE ILLINOIS OCCUPANCY CODE (7/11/04 CODE 900).

SCHEDULES, CALCULATION
Walgreen
 NORTHEAST CORNER OF LAKE ST. (ROUTE 122)
 1221 NORTH LAKE STREET

PREFERRED DEVELOPMENT
 141 W. JACKSON #3540 D

BASE TEN ARCHITECTS, INC. STORE NO. 06937
 475 W. 35th Street Suite 309 La Grange, IL 60525
 T 708.215.8002 F 708.215.8005
 816a.com DATE: 5-17-02
 A-8-15-02

AURORA, ILLIN