

Report By:

National TAB
1329 E. KEMPER ROAD
SUITE 4210
CINCINNATI, OH 45246



Report: TAB REPORT
Function: Test, Adjust, & Balance
Date: 05/01/2025
Completed By: National TAB

PROJECT
04-28-25 WALGREENS #6937 AURORA, IL
(REACTIVE)

1221 N LAKE ST

AURORA , IL 60506

Client

Walgreens

200 WILMOT RD

DEERFIELD, IL 60015

National TAB

Project: 04-28-25 WALGREENS #6937 AURORA, IL (REACTIVE)

Table Of Contents

| Section | Page # |
|------------------|--------|
| SUMMARY | 3 |
| REMARKS | 4 |
| BALANCE SCHEDULE | 9 |
| CHECKLIST | 10 |
| AHU/RTU | 27 |
| FAN - Exhaust | 47 |
| GRD LAYOUT | 50 |

Project Summary

The summary below provides a quick understanding of our scope of work and general testing procedures. Enclosed in the report is further detail about your building performance including recommendations, asset data, and pictures. Our focus is to work with the trades to remedy any issues or deficiencies during the actual field balancing and not after the balancing has occurred to achieve a positive environment and outcome. The level of success is determined by the availability of the trades, possible parts needed, or time constraints.

Commissioning Activities

Equipment was inspected to ensure that the installation meets Walgreens requirements. Control and equipment setpoints were checked and after balancing was completed performance of each unit was verified. The full list of items that were verified along with any that failed are contained in the checklists in this report.

RTU's (Roof Top Units) w/ Diffusers

Each of the RTU's were measured at their terminal devices or via traverse to establish a total flow for that unit. Each RTU was adjusted to within tolerance per Walgreens standards. Each outlet was then adjusted to within tolerance. Outside air was measured by reading the intake air opening with a velocity grid and multiplying by the free area. The outside air damper was adjusted until the airflow was within the design requirements. Any equipment that fell outside of that tolerance is noted throughout the report.

General Exhaust Fans w/ Grilles

The general exhaust fans were measured by reading each air device with a flow hood. The total airflow for each fan is equivalent to the sum of these readings. Fan speed was then adjusted so that the airflow was within tolerance. Each terminal device was balanced to within tolerance of the design volume using the installed volume dampers. Any equipment that fell outside of this tolerance is noted throughout the report.

Issue List

- EF-2/EF-3 vibration
- RTU Economizers not functional
- RTU-3: Supply Diffusers 1 and 2 Low on Airflow
- RTU-4 not operational



04-28-25 WALGREENS #6937 AURORA, IL (REACTIVE)

Project Issue Information

Issue Name : EF-2/EF-3 vibration
Description : EF-3/EF-2 have a significant vibration sound coming from them when turned down past a certain point on speed controller. When set at design CFM fans become louder. Recommend mechanical inspect for loose parts or fan misalignment. Increasing fan speed to lowest speed without vibration might be an option.
Created By : National TAB **Assigned To :** National TAB - Dylan Crisman
Status : Open
Priority : Low **Asset Tag :**
Originated Date : 04/30/2025 - Dylan Crisman - National TAB

Project Issue File Details



04/30/2025



04/30/2025



04-28-25 WALGREENS #6937 AURORA, IL (REACTIVE)

Project Issue Information

Issue Name : RTU Economizers not functional
Description : Economizers for all RTUs are not functional. Manually set to achieve design OA airflow. Recommend mechanical inspect economizer wiring and controllers to correct for proper functionality.
Created By : National TAB **Assigned To :** National TAB - Dylan Crisman
Status : Open
Priority : High **Asset Tag :**
Originated Date : 04/28/2025 - Dylan Crisman - National TAB



04-28-25 WALGREENS #6937 AURORA, IL (REACTIVE)

Project Issue Information

Issue Name : RTU-3: Supply Diffusers 1 and 2 Low on Airflow
Description : Diffusers 1 and 2 on RTU-3 are low on airflow due to damper accessibility. We are unable to access the dampers on this system in order to push airflow to the low diffusers. Unit is scheduled for 487cfm/ton and is at 92% of design with fan motor at FLA and motor sheave 1 turn open.

Created By : National TAB **Assigned To :** National TAB - Dylan Crisman

Status : Open

Priority : Medium **Asset Tag :**

Originated Date : 05/20/2025 - Michael McDonnell - National TAB



04-28-25 WALGREENS #6937 AURORA, IL (REACTIVE)

Project Issue Information

Issue Name : RTU-4 not operational
Description : RTU-4 is not operational, it appears the blower wheel has fallen out of alignment and the fan housing is dented and sunken along the back, appears someone has attempted to repair. Unable to determine current status of repairs with store managers.
Created By : National TAB **Assigned To :** National TAB - Dylan Crisman
Status : Open
Priority : Urgent **Asset Tag :**
Originated Date : 04/28/2025 - Dylan Crisman - National TAB

Project Issue File Details



04/28/2025



04/28/2025



04/28/2025

AIR BALANCE SCHEDULE

| UNIT | AREA SERVED | HVAC SUPPLY | | HVAC RETURN | | HVAC OUTDOOR | | OA % | | HOOD MAKE-UP | | HOOD EXHAUST | | GENERAL EXH. | |
|---------------|--------------------------|-------------|--------|-------------|--------|--------------|--------|--------|---------|--------------|--------|--------------|--------|--------------|--------|
| | | DESIGN | ACTUAL | DESIGN | ACTUAL | DESIGN | ACTUAL | DESIGN | ACTUAL | DESIGN | ACTUAL | DESIGN | ACTUAL | DESIGN | ACTUAL |
| RTU-1 | FRONT SALES/ENTRY | 3150 | 3060 | 2678 | 2576 | 472 | 484 | 15.0% | 15.8% | | | | | | |
| RTU-2 | FRONT SALES/OFFICE/PHOTO | 3125 | 3026 | 2656 | 2545 | 469 | 481 | 15.0% | 15.9% | | | | | | |
| RTU-3 | REAR SALES | 3150 | 3390 | 2800 | 3018 | 350 | 372 | 11.1% | 11.0% | | | | | | |
| RTU-4 | REAR SALES/BREAKROOM | 2730 | 0 | 2430 | 0 | 300 | 0 | 11.0% | #DIV/0! | | | | | | |
| RTU-5 | STOCK ROOM | 1600 | 1633 | 1425 | 1446 | 175 | 187 | 10.9% | 11.5% | | | | | | |
| RTU-6 | PHARMACY | 2100 | 1979 | 2100 | 1979 | 0 | 0 | 0.0% | 0.0% | | | | | | |
| EH-1 | ENTRANCE DOORS | 2000 | 2093 | | | | | | | | | | | | |
| EF-2 | EMPLOYEE RESTROOM | | | | | | | | | | | | | 300 | 314 |
| EF-3 | MENS + WOMENS RESTROOM | | | | | | | | | | | | | 500 | 508 |
| TOTALS | | 17855 | 15181 | 14089 | 11564 | 1766 | 1524 | | | 0 | 0 | 0 | 0 | 800 | 822 |

NET BUILDING AIRFLOW CALCULATION

| TOTALS | DESIGN | ACTUAL |
|--------------------|------------|------------|
| TOTAL OA | 1766 | 1524 |
| TOTAL EXHAUST | 800 | 822 |
| NET AIRFLOW | 966 | 702 |

| DOOR TESTED | BUILDING PRESSURE MEASUREMENTS (IN. H2O) |
|----------------|--|
| FRONT | 0.0104 |
| SIDE | |
| REAR | 0.0121 |
| AVERAGE | 0.0113 |

FINAL CHECKS

- ACTUAL NET AIRFLOW COINCIDES WITH DESIGN: ✓

- MEASURED PRESSURES COINCIDES WITH ACTUAL NET AIRFLOW: ✓

- DESIGN PRESSURIZATION IS >10% (OA - EXH) / EXH > 10% ✓

- ACTUAL PRESSURIZATION IS >10% (OA - EXH) / EXH > 10% ✓

NOTES:

CheckList List

- 01 RTU INSTALLATION CHECKLIST
- 02 EXHAUST FANS INSPECTIONS
- 04 EMS/SENSOR VALIDATION
- 05 TAB CHECKLIST
- 06 FUNCTIONAL TESTS
- 07 TEMPERATURE SETPOINTS
- 08 ENTRANCE HEATERS



04-28-25 WALGREENS #6937 AURORA, IL (REACTIVE)

CheckList Information

Name : 01 RTU INSTALLATION CHECKLIST **Status :** Completed
Assigned Organization : National TAB **Asset :**
Requesting Organization : National TAB
Created Date : 04/22/2025 - Nicole Seever - National TAB
Completed Date : 04/30/2025 - Dylan Crisman - National TAB

CheckList Item Details

General / Exterior Inspections

Verify all required equipment has been replaced per TA and BOM. Pass

Comment:

All units are installed in the proper locations Pass

Comment:

Units are labeled correctly Pass

Comment:

Asset tag installed Pass

Comment:

Roof is clear of debris. Pass

Comment:

Maintenance access for all unit access panels is acceptable and panels open freely. Pass

Comment:

Cabinet and general installation is complete. Pass

Comment:

Unit is secure to curb and level horizontally and vertically.

Pass

Comment:

Access doors close tightly with no leaks

Pass

Comment:

Condensate and gas piping is properly supported.

Pass

Comment:

Costgaurd is installed per scope of work and piping unions are cemented.

Pass

Comment:

Additional Comments

Comment:

Interior Inspections

Fan rotation is correct

Pass

Comment:

Pulleys are correctly aligned and both motor and fan sheave pins are tightened in place.

Pass

Comment:

Return air and outside air dampers close tightly with no gaps

Pass

Comment:

Cabinet and coils are not damaged and in like new condition.

Pass

Comment:

Inside of unit is clean and clear of debris.

Pass

Comment:

Validate condensate is piped to splash block, draining, or roof drain per code requirements

Pass

Comment:

Verify filters are installed, clean and of proper size. Verify there is no air by-pass around filters.

Pass

Comment:

Curb is sealed with no air leakage.

Pass

Comment:

Additional Comments:

Comment:

Fire/Smoke Alarm Systems

In duct smoke detectors are installed

Pass

Comment:

Fire alarm panel status (visual inspection where possible)

Comment:

Nothing appears on screen.

Additional Comments:

Comment:

Electrical

Electrical wiring is complete with no visible damage

Pass

Comment:

Electrical connections are tight with sealtight around any unit penetrations.

Pass

Comment:

Disconnect switch is installed in accessible location near or on unit.

Pass

Comment:

Verify overcurrent protection is HACR type, installed and sized correctly and labeled in panel.

Pass

Comment:

Maintenance electrical outlet is installed and functional.

Pass

Comment:

Main distribution panel is labeled correctly.

Pass

Comment:

Unit ground wire is secured.

Pass

Comment:

Additional Comments:

Comment:



04-28-25 WALGREENS #6937 AURORA, IL (REACTIVE)

CheckList Information

Name : 02 EXHAUST FANS INSPECTIONS **Status :** Completed
Assigned Organization : National TAB **Asset :**
Requesting Organization : National TAB
Created Date : 04/22/2025 - Nicole Seever - National TAB
Completed Date : 04/29/2025 - Dylan Crisman - National TAB

CheckList Item Details

Fan rotation is correct Pass

Comment:

Pulleys are aligned and belts are tensioned properly

Comment:

NA/DD

Speed controller installed and functional (direct drive)

Comment:

Yes

Fan is secured to the curb Pass

Comment:

Back draft damper is installed and functional Pass

Comment:

No exterior damage to the fan Pass

Comment:

No unusual noise or vibration Pass

Comment:

Controls are functional

Pass

Comment:

Additional Comments:

Comment:



04-28-25 WALGREENS #6937 AURORA, IL (REACTIVE)

CheckList Information

Name : 04 EMS/SENSOR VALIDATION **Status :** Completed

Assigned Organization : National TAB **Asset :**

Requesting Organization : National TAB

Created Date : 04/22/2025 - Nicole Seever - National TAB

Completed Date : 04/30/2025 - Dylan Crisman - National TAB

CheckList Item Details

RTU supply air temp sensor location located per start-up binder. Pass

Comment:

RTU return air temp sensor location located per start-up binder. Pass

Comment:

RTU return air smoke detector (when applicable) is located per start-up binder. Pass

Comment:

Space temperature sensor has been replaced and location meets requirements. Pass

Comment:

Space humidity sensor has been replaced and location meets requirements. Pass

Comment:

Unit is being controlled by a space temperature sensor or thermostat Pass

Comment:

EMS has been connected and validated with TOC or Gridpoint. Screen shot is available. Fail

Comment:

Replaced RTUs 2 and 3 are connected through local thermostat.

No splicing of EMS/Sensor/Thermostat wiring is visible

Pass

Comment:

(If Applicable) 2 Stage Thermostat to SE Board Control Wiring meets detail in start-up binder.

Comment:

Yes

(If Applicable) 2 Stage Thermostat to 4 Stage Unit meets detail in start-up binder.

Comment:

Yes

(If Applicable) 4 Stage Thermostat to 4 Stage Unit meets detail in start-up binder.

Comment:

Yes

(If Applicable) 3 Stage Thermostat wiring meets detail in start-up binder.

Comment:

Yes

(If Applicable) 3 Stage Thermostat with Humidity sensor wiring meets detail in start-up binder.

Comment:

Yes

(If Applicable) EH Thermostat with SCR control wiring meets detail in start-up binder.

Comment:

Yes

Temperature setpoints are set for correction region and space (see ASHRAE / temperature setpoint chart in procedure)

Fail

Comment:

Controls company would not change temperature setpoints without a proper service order made from Walgreens to them prior to changing.

Additional Comments:

Comment:



04-28-25 WALGREENS #6937 AURORA, IL (REACTIVE)

CheckList Information

Name : 05 TAB CHECKLIST **Status :** Completed
Assigned Organization : National TAB **Asset :**
Requesting Organization : National TAB
Created Date : 04/22/2025 - Nicole Seever - National TAB
Completed Date : 04/30/2025 - Dylan Crisman - National TAB

CheckList Item Details

Outside air damper set to minimum air flow requirement and damper position marked. Pass

Comment:

Total Supply, return, and outside air volumes meet design tolerances (+/-10%) Pass

Comment:

Enclosed area diffusers (Pharmacies, manager office, employee room, restrooms, electrical rooms) balanced within +/-10%? Pass

Comment:

Open area diffusers (Sales floor and stock room) balanced within +/-25% of design? Pass

Comment:

Store pressure meets tolerances (see formula in balance schedule). Make sure to account for existing exhaust fans airflows as shown on original drawings that are non-functioning. Pass

Comment:

Outside air and return air dampers modulate freely. Fail

Comment:

OA dampers are not functional on all RTUs. OA damper had to be manually set to achieve minimum OA airflow requirement.

Start-up report from the installing contractor is reviewed and all information is filled out.
All required measurements are within typical ranges.

Pass

Comment:

(If Applicable) VFD is set-up and operational. (N/A = not applicable)

Comment:

Yes

Verify amp draw of motor is within unit specification, not operating in overramped condition.

Pass

Comment:

Sales floor temperature and humidity measurement

Comment:

69.8F/41.6%RH

Pharmacy temperature and humidity measurement

Comment:

70.9F/40.2%RH

Stock Room temperature and humidity measurement

Comment:

69.7F/38.7%RH

Outdoor air temperature and humidity measurement

Comment:

62.3F/41.6%RH

Additional Comments:

Comment:



04-28-25 WALGREENS #6937 AURORA, IL (REACTIVE)

CheckList Information

Name : 06 FUNCTIONAL TESTS **Status :** Completed

Assigned Organization : National TAB **Asset :**

Requesting Organization : National TAB

Created Date : 04/22/2025 - Nicole Seever - National TAB

Completed Date : 04/30/2025 - Dylan Crisman - National TAB

CheckList Item Details

Cooling Functional Test

Overwrite the thermostat or sensor to put the unit into cooling mode. Pass

Comment:

Compressors enable. Pass

Comment:

If fan has VFD, the fan increases speed. Pass

Comment:

Document the discharge air temperature.

Comment:

RTU-1 48.8F RTU-2 50.8F RTU-3 51.1F RTU-5 52.4F RTU-6 51.7F

After 10 minutes, Discharge air temperature is below 55 degrees. Pass

Comment:

Cooling mode is operational Pass

Comment:

Additional Comments:

Comment:

Heating Functional Test

Overwrite the thermostat or sensor to put the unit into heating mode. Pass

Comment:

Heat exchanger enables. Pass

Comment:

If fan has VFD, the fan increases speed. Pass

Comment:

Document the discharge air temperature.

Comment:

RTU-1 131.5F RTU-2 132.1F RTU-3 135.4F RTU-5 127.8F RTU-6 129F

After 10 minutes, Discharge air temperature is above 85 degrees. Pass

Comment:

Heating mode is operational Pass

Comment:

Additional Comments

Comment:

Dehumidification Functional Test

Overwrite the humidistat to put the unit into dehumidification mode. Pass

Comment:

Compressors enable. Pass

Comment:

Hot Gas Reheat Valve opens Pass

Comment:

If fan has VFD, the fan increases speed.

Pass

Comment:

Document the discharge air temperature.

Comment:

RTU-2 64.6F RTU-3 66.2F

Dehumidification Mode is operational. (Pass/Fail/NA)

Comment:

Pass for RTU-2/RTU-3. N/A for all other 4 RTUs.

Additional Comments:

Comment:

Economizer Functional Test

Overwrite the humidistat to put the unit into economizer mode.

Pass

Comment:

Economizer modulates from minimum position to 100% open. (Pass/Fail/NA)

Comment:

Fail, economizer does not function. Manually set min position.

Additional Comments:

Comment:



04-28-25 WALGREENS #6937 AURORA, IL (REACTIVE)

CheckList Information

Name : 07 TEMPERATURE SETPOINTS **Status :** Completed
Assigned Organization : National TAB **Asset :**
Requesting Organization : National TAB
Created Date : 04/22/2025 - Nicole Seever - National TAB
Completed Date : 04/29/2025 - Dylan Crisman - National TAB

CheckList Item Details

Temperature setpoints must be set using provided charts are based on state and space that each RTU serves. Confirm with controls company that these are set correctly Fail

Comment:

Controls company would not change temperature setpoints without a proper service order made from Walgreens to them prior to changing.



04-28-25 WALGREENS #6937 AURORA, IL (REACTIVE)

CheckList Information

Name : 08 ENTRANCE HEATERS **Status :** Completed
Assigned Organization : National TAB **Asset :**
Requesting Organization : National TAB
Created Date : 04/22/2025 - Nicole Seever - National TAB
Completed Date : 04/29/2025 - Dylan Crisman - National TAB

CheckList Item Details

Sensor is located within 15' of entrance area Pass

Comment:

Confirm proper operation of entrance heater and associated controls Pass

Comment:

Balance supply air quantity to manufacturer recommended supply airflow. Pass

Comment:

Confirm listed temperature rise and discharge air temperature based on approved BOM/submittal Pass

Comment:

National TAB

Project: 04-28-25 WALGREENS #6937 AURORA, IL
(REACTIVE)



System/Unit: AHU/RTU

Asset: EH1

AREA:FRONT DOOR

| Unit Data | | |
|---------------------|--------|-------------|
| | Design | Actual |
| MFG | NA | REZNOR |
| Serial Num | - | NL |
| Model Num | NA | NL |
| Type | - | UNIT HEATER |
| Configuration | - | VERTICAL |
| Num Final Filter 1 | - | 1 |
| Final Filter Size 1 | - | 32x25 |
| Num Final Filter 2 | - | 1 |
| Final Filter Size 2 | - | 32x20 |

| Drive Data | |
|--------------------|--------------|
| | Actual |
| Motor Sheave Size | 4" |
| Motor Bore Size | 5/8" |
| Motor Sheave SetPt | 2 TURNS OPEN |
| Fan Sheave Size | 7" |
| Fan Sheave Bore | 1" |
| Belt CL Distance | 14" |
| Num of Belts | 1 |
| Belt Size | AX42 |
| Belt Alignment | VERIFIED |

| Test Data | | |
|-----------------|--------|--------------|
| | Design | Actual |
| SF CFM | 2000 | 2093 |
| SF RPM | - | 1072 |
| RA CFM | - | 2093 |
| OA CFM | 0 | 0 |
| RL Voltage | - | 209/208/209 |
| RL Amperage | - | 1.9/2.0/2.0 |
| SF Rotation | - | CW |
| SF System SetPt | - | 2 TURNS OPEN |

| Performance Data | | |
|------------------|--------|--------|
| | Design | Actual |
| Fan Suction SP | - | -0.55" |
| Fan Discharge SP | - | 0.31" |
| Total ESP | - | 0.86" |
| Fan Total SP | - | 0.86" |

| General | |
|----------------------------|--------|
| | Actual |
| Fan Rotation Correct | YES |
| Unit Filters Clean | YES |
| Condensate Drain Installed | YES |

Completed By: Dylan Crisman on 04/30/2025

Unit Data - PHOTO LOG



04/28/2025

National TAB

Project:04-28-25 WALGREENS #6937 AURORA, IL
(REACTIVE)

AHU/RTU



Diffuser Supply (GRD)

EH1/FRONT DOOR

| Asset | | | | | | | | | |
|------------|------------|------|------|------------|-----|--------|--------|-----------|-------------|
| Asset Name | Location | Type | Size | DESIGN CFM | AK | CFM(1) | CFM(2) | FINAL CFM | % to design |
| SGRD1 | FRONT DOOR | 5 | 6x36 | 1000 | 1.0 | 1059 | 1059 | 1059 | 105.9 |
| SGRD2 | FRONT DOOR | 5 | 6x36 | 1000 | 1.0 | 1034 | 1034 | 1034 | 103.4 |
| Total | | | | 2000 | | 2093 | 2093 | 2093 | 104.65% |

Completed By: Dylan Crisman on 04/29/2025

National TAB

Project: 04-28-25 WALGREENS #6937 AURORA, IL
(REACTIVE)



System/Unit: AHU/RTU

Asset: RTU1

AREA:FRONT SALES/ENTRY

| Unit Data | | |
|---------------------|-------------|-----------|
| | Design | Actual |
| MFG | TRANE | TRANE |
| Serial Num | - | 15401225L |
| Model Num | YHC092F3RHA | YHC092 |
| Type | RTU | RTU |
| Configuration | VERTICAL | VERTICAL |
| Num OA Filters 1 | - | 1 |
| OA Filter Size 1 | - | 36X17 |
| Num Final Filter 1 | - | 2 |
| Final Filter Size 1 | - | 49X21 |

| Motor Data | | |
|----------------|--------|--------|
| | Design | Actual |
| Horsepower | 7.5 | 3.80 |
| Phase | 3 | 3 |
| Rated Voltage | 208 | 208 |
| Rated Amperage | - | 8.5 |

| Test Data | | |
|------------------------|--------|--------------------|
| | Design | Actual |
| SF CFM | 3150 | 3060 |
| SF RPM | - | NA |
| RA CFM | 2678 | 2576 |
| OA CFM | 472 | 484 |
| RL Voltage | - | 210/210/210 |
| RL Amperage | - | 3.8/3.4/3.9 |
| SF Rotation | - | CW |
| SF System SetPt | - | 4.6VDC |
| RA Damper Position | - | MECHANICAL LINKAGE |
| Min OA Damper Position | - | 3/4" OPEN |
| Min OA Damper Type | - | ECONOMIZER |
| OA Enthalpy Setpt | - | D |

| Performance Data | | |
|------------------|--------|--------|
| | Design | Actual |
| MA Plenum SP | - | -0.21" |
| Fan Suction SP | - | -0.33" |
| Fan Discharge SP | - | 0.32" |
| Total ESP | 0.50" | 0.53" |
| Fan Total SP | - | 0.65" |

| General | |
|----------------------------|--------|
| | Actual |
| Fan Rotation Correct | YES |
| Unit Filters Clean | YES |
| Condensate Drain Installed | YES |

Completed By: Dylan Crisman on 04/30/2025

Notes:
Economizer not functional, OA damper manually set to achieve design airflow.

Written By: Dylan Crisman on 05/20/2025

Unit Data - PHOTO LOG



04/28/2025

National TAB

Project:04-28-25 WALGREENS #6937 AURORA, IL
(REACTIVE)

AHU/RTU



Diffuser Supply (GRD)

RTU1/FRONT SALES/ENTRY

| Asset | | | | | | | | | |
|------------|-------------------|------|--------|------------|-----|--------|--------|-----------|-------------|
| Asset Name | Location | Type | Size | DESIGN CFM | AK | CFM(1) | CFM(2) | FINAL CFM | % to design |
| SGRD1 | FRONT SALES/ENTRY | 2 | 24X24" | 800 | 1.0 | 763 | 763 | 763 | 95.4 |
| SGRD2 | FRONT SALES/ENTRY | 2 | 24X24" | 500 | 1.0 | 505 | 505 | 505 | 101.0 |
| SGRD3 | FRONT SALES/ENTRY | 5 | 6X24" | 200 | 1.0 | 209 | 209 | 209 | 104.5 |
| SGRD4 | FRONT SALES/ENTRY | 5 | 6X24" | 200 | 1.0 | 228 | 228 | 228 | 114.0 |
| SGRD5 | FRONT SALES/ENTRY | 5 | 6X24" | 200 | 1.0 | 212 | 212 | 212 | 106.0 |
| SGRD6 | FRONT SALES/ENTRY | 5 | 6X24" | 200 | 1.0 | 223 | 223 | 223 | 111.5 |
| SGRD7 | FRONT SALES/ENTRY | 5 | 6X24" | 200 | 1.0 | 226 | 226 | 226 | 113.0 |
| SGRD8 | FRONT SALES/ENTRY | 5 | 6X24" | 200 | 1.0 | 217 | 217 | 217 | 108.5 |
| SGRD9 | FRONT SALES/ENTRY | 2 | 24X24" | 500 | 1.0 | 477 | 477 | 477 | 95.4 |
| Total | | | | 3000 | | 3060 | 3060 | 3060 | 102% |

National TAB

Project: 04-28-25 WALGREENS #6937 AURORA, IL
(REACTIVE)



System/Unit: AHU/RTU

Asset: RTU2

AREA:FRONT SALES/OFFICE/PHOTO

| Unit Data | | |
|---------------------|--------------------|------------|
| | Design | Actual |
| MFG | YORK | YORK |
| Serial Num | - | N2A3372345 |
| Model Num | ZT078N18R2B5GCA2R2 | ZT078 |
| Type | RTU | RTU |
| Configuration | VERTICAL | VERTICAL |
| Num OA Filters 1 | - | 1 |
| OA Filter Size 1 | - | 29X21 |
| Num Final Filter 1 | - | 2 |
| Final Filter Size 1 | - | 47X19.5 |

| Motor Data | | |
|----------------|--------|-----------------|
| | Design | Actual |
| Motor MFG | - | BALDOR-RELIANCE |
| Frame | - | 56Hz |
| Horsepower | 7.5 | 2.0 |
| Motor Rpm | - | 1750 |
| Phase | 3 | 3 |
| Rated Voltage | 208 | 208 |
| Rated Amperage | - | 5.8 |

| Drive Data | |
|--------------------|--------------|
| | Actual |
| Motor Sheave Size | 5" |
| Motor Bore Size | 1" |
| Motor Sheave SetPt | 3 TURNS OPEN |
| Fan Sheave Size | 7" |
| Fan Sheave Bore | 1" |
| Belt CL Distance | 19.5" |
| Num of Belts | 1 |
| Belt Size | A54 |
| Belt Alignment | VERIFIED |

| Test Data | | |
|------------------------|--------|--------------------|
| | Design | Actual |
| SF CFM | 3125 | 3026 |
| SF RPM | - | 953 |
| RA CFM | 2656 | 2539 |
| OA CFM | 469 | 481 |
| RL Voltage | - | 210/209/210 |
| RL Amperage | - | 7.3/7.3/7.7 |
| SF Rotation | - | CW |
| SF System SetPt | - | 2 TURNS OPEN |
| RA Damper Position | - | MECHANICAL LINKAGE |
| Min OA Damper Position | - | 1/2" OPEN |
| Min OA Damper Type | - | ECONOMIZER |
| OA Enthalpy Setpt | - | 27B |

| Performance Data | | |
|------------------|--------|--------|
| | Design | Actual |
| MA Plenum SP | - | -0.82" |
| Fan Suction SP | - | -0.87" |
| Fan Discharge SP | - | 0.60 |
| Total ESP | 0.50" | 1.42" |
| Fan Total SP | - | 1.47" |

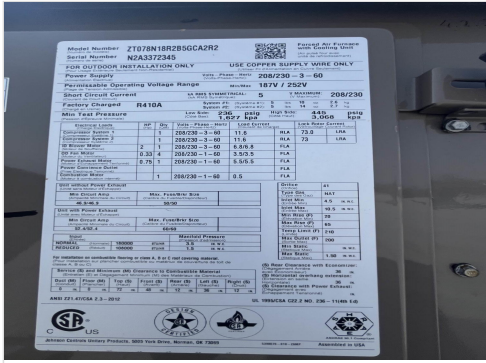
| General | |
|----------------------------|--------|
| | Actual |
| Fan Rotation Correct | YES |
| Unit Filters Clean | YES |
| Condensate Drain Installed | YES |

Completed By: Dylan Crisman on 04/30/2025

Notes:
Economizer not functional, OA damper manually set to achieve design airflow.

Written By: Dylan Crisman on 05/20/2025

Unit Data - PHOTO LOG



04/28/2025



04/28/2025

National TAB

Project:04-28-25 WALGREENS #6937 AURORA, IL
(REACTIVE)

AHU/RTU



Diffuser Supply (GRD)

RTU2/Front Sales/Office/Photo

| Asset | | | | | | | | | |
|------------|---------------|------|--------|------------|-----|--------|--------|-----------|-------------|
| Asset Name | Location | Type | Size | DESIGN CFM | AK | CFM(1) | CFM(2) | FINAL CFM | % to design |
| SGRD1 | FRONT SALES | 2 | 24X24" | 375 | 1.0 | 401 | 401 | 401 | 106.9 |
| SGRD2 | FRONT SALES | 2 | 24X24" | 375 | 1.0 | 379 | 379 | 379 | 101.1 |
| SGRD3 | TRAINING ROOM | 2 | 24X24" | 200 | 1.0 | 188 | 188 | 188 | 94.0 |
| SGRD4 | PASSAGE | 2 | 24X24" | 200 | 1.0 | 191 | 191 | 191 | 95.5 |
| SGRD5 | OFFICE | 2 | 24X24" | 500 | 1.0 | 464 | 464 | 464 | 92.8 |
| SGRD6 | 1 HR PHOTO | 2 | 24X24" | 500 | 1.0 | 462 | 462 | 462 | 92.4 |
| SGRD7 | 1 HR PHOTO | 2 | 24X24" | 600 | 1.0 | 576 | 576 | 576 | 96.0 |
| SGRD8 | FRONT SALES | 2 | 24X24" | 375 | 1.0 | 365 | 365 | 365 | 97.3 |
| Total | | | | 3125 | | 3026 | 3026 | 3026 | 96.83% |

Completed By: Dylan Crisman on 04/29/2025

National TAB

Project: 04-28-25 WALGREENS #6937 AURORA, IL
(REACTIVE)



System/Unit: AHU/RTU

Asset: RTU3

AREA: REAR SALES/BREAKROOM

| Unit Data | | |
|---------------------|-----------|------------|
| | Design | Actual |
| MFG | CARRIER | CARRIER |
| Serial Num | - | 0203G30605 |
| Model Num | 48HJF008G | 48HJF008G |
| Type | RTU | RTU |
| Configuration | VERTICAL | VERTICAL |
| Num OA Filters 1 | - | 1 |
| OA Filter Size 1 | - | 35X20 |
| Num Final Filter 1 | - | 2 |
| Final Filter Size 1 | - | 42X16.5 |

| Motor Data | | |
|----------------|--------|-----------|
| | Design | Actual |
| Motor MFG | - | GE MOTORS |
| Frame | - | 56Y |
| Motor Rpm | - | 1620 |
| Phase | 3 | 3 |
| Rated Voltage | 208 | 208 |
| Rated Amperage | - | 7.5 |

| Drive Data | |
|--------------------|-------------|
| | Actual |
| Motor Sheave Size | 5" |
| Motor Bore Size | 1" |
| Motor Sheave SetPt | 2TURNS OPEN |
| Fan Sheave Size | 7" |
| Fan Sheave Bore | 1" |
| Belt CL Distance | 19.5" |
| Num of Belts | 1 |
| Belt Size | AX54 |
| Belt Alignment | VERIFIED |

| Test Data | | |
|------------------------|--------|--------------------|
| | Design | Actual |
| SF CFM | 3658 | 3390 |
| SF RPM | - | 867 |
| RA CFM | 3308 | 3018 |
| OA CFM | 350 | 372 |
| RL Voltage | - | 209/209/210 |
| RL Amperage | - | 7.9/8.2/8.0 |
| SF Rotation | - | CW |
| SF System SetPt | - | 1 TURN OPEN |
| RA Damper Position | - | MECHANICAL LINKAGE |
| Min OA Damper Position | - | 1/4" OPEN |
| Min OA Damper Type | - | ECONOMIZER |

| Performance Data | | |
|------------------|--------|--------|
| | Design | Actual |
| MA Plenum SP | - | -0.78" |
| Fan Suction SP | - | -0.97" |
| Fan Discharge SP | - | 0.53" |
| Total ESP | 0.50" | 1.31" |
| Fan Total SP | - | 1.5" |

| General | |
|----------------------------|--------|
| | Actual |
| Fan Rotation Correct | YES |
| Unit Filters Clean | YES |
| Condensate Drain Installed | YES |

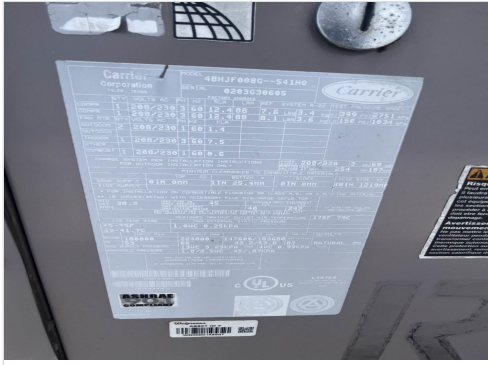
Completed By: Dylan Crisman on 04/30/2025

Notes:

- [1] 420cfm/ton puts this unit at 3150CFM but plans call for 3658CFM or 487 CFM/ton. Unit is at 3398CFM with fan motor at FLA and motor sheave at 1 turn open.
- [2] Sales floor ductwork inaccessible. Unable to reach dampers and push air to diffusers 1 and 2.
- [3] Economizer not functional, OA damper manually set to achieve design airflow.

Written By: Michael McDonnell on 05/20/2025

Unit Data - PHOTO LOG



04/28/2025



04/28/2025

National TAB

Project:04-28-25 WALGREENS #6937 AURORA, IL
(REACTIVE)

AHU/RTU



Diffuser Supply (GRD)

RTU3/REAR SALES/BREAKROOM

| Asset | | | | | | | | | |
|------------|------------|------|--------|------------|-----|--------|--------|-----------|-------------|
| Asset Name | Location | Type | Size | DESIGN CFM | AK | CFM(1) | CFM(2) | FINAL CFM | % to design |
| SGRD1 | PASSAGE #1 | 2 | 12X12" | 360 | 1.0 | 194 | 223 | 223 | 61.9 |
| SGRD2 | REAR SALES | 2 | 12X12" | 400 | 1.0 | 223 | 256 | 256 | 64.0 |
| SGRD3 | REAR SALES | 2 | 24X24" | 966 | 1.0 | 765 | 880 | 880 | 91.1 |
| SGRD4 | REAR SALES | 2 | 24X24" | 966 | 1.0 | 879 | 1010 | 1010 | 104.6 |
| SGRD5 | REAR SALES | 2 | 24X24" | 966 | 1.0 | 888 | 1021 | 1021 | 105.7 |
| Total | | | | 3658 | | 2949 | 3390 | 3390 | 92.67% |

Completed By: Dylan Crisman on 05/20/2025

National TAB

Project: 04-28-25 WALGREENS #6937 AURORA, IL
(REACTIVE)



System/Unit: AHU/RTU

Asset: RTU4

AREA: REAR SALES

| Unit Data | | |
|---------------------|--------------------|------------|
| | Design | Actual |
| MFG | YORK | YORK |
| Serial Num | - | N2M3998293 |
| Model Num | ZT078N18R2B5GCE2R2 | ZT078N |
| Type | RTU | RTU |
| Configuration | VERTICAL | VERTICAL |
| Num OA Filters 1 | - | 1 |
| OA Filter Size 1 | - | 29X21 |
| Num Final Filter 1 | - | 2 |
| Final Filter Size 1 | - | 47X19.5 |

| Test Data | | |
|--------------------|--------|--------------------|
| | Design | Actual |
| SF CFM | 2730 | 0 [1] |
| OA CFM | 300 | 0 [1] |
| SF Rotation | - | CW |
| SF System SetPt | - | 3 TURNS OPEN |
| RA Damper Position | - | MECHANICAL LINKAGE |
| Min OA Damper Type | - | ECONOMIZER |
| OA Enthalpy Setpt | - | 27B |

| Motor Data | | |
|----------------|--------|-----------------|
| | Design | Actual |
| Motor MFG | - | BALDOR-RELIANCE |
| Frame | - | 56Hz |
| Horsepower | 2 | 2.0 |
| Motor Rpm | - | 1750 |
| Phase | 3 | 3 |
| Rated Voltage | 230 | 208 |
| Rated Amperage | - | 5.8 |

| General | |
|----------------------------|--------|
| | Actual |
| Fan Rotation Correct | YES |
| Unit Filters Clean | YES |
| Condensate Drain Installed | YES |

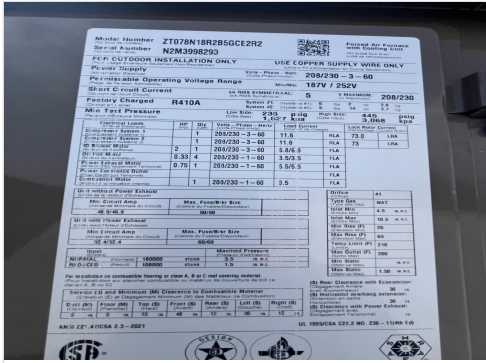
| Drive Data | |
|--------------------|--------------|
| | Actual |
| Motor Sheave Size | 5" |
| Motor Bore Size | 1" |
| Motor Sheave SetPt | 3 TURNS OPEN |
| Fan Sheave Size | 7" |
| Fan Sheave Bore | 1" |
| Belt CL Distance | 19.5" |
| Num of Belts | 1 |
| Belt Size | A54 |
| Belt Alignment | VERIFIED |

Completed By: Dylan Crisman on 05/20/2025

Notes:
[1] RTU-4 is not operational, could not balance.

Written By: Michael McDonnell on 05/20/2025

Unit Data - PHOTO LOG



04/28/2025



04/28/2025

National TAB

Project:04-28-25 WALGREENS #6937 AURORA, IL
(REACTIVE)

AHU/RTU



Diffuser Supply (GRD)

RTU4/REAR SALES

| Asset | | | | | | | | | |
|------------|------------|------|--------|------------|-----|--------|--------|-----------|-------------|
| Asset Name | Location | Type | Size | DESIGN CFM | AK | CFM(1) | CFM(2) | FINAL CFM | % to design |
| SGRD1 | REAR SALES | 2 | 24X24" | 1200 | 1.0 | 0 | 0 | 0 | 0.0 |
| SGRD2 | REAR SALES | 2 | 24X24" | 1200 | 1.0 | 0 | 0 | 0 | 0.0 |
| SGRD3 | REAR SALES | 2 | 24X24" | 1200 | 1.0 | 0 | 0 | 0 | 0.0 |
| Total | | | | 3600 | | 0 | 0 | 0 | 0% |

Completed By: Dylan Crisman on 05/20/2025

National TAB

Project: 04-28-25 WALGREENS #6937 AURORA, IL
(REACTIVE)



System/Unit: AHU/RTU

Asset: RTU5

AREA:STOCK ROOM

| Unit Data | | |
|---------------------|-----------|------------|
| | Design | Actual |
| MFG | CARRIER | CARRIER |
| Serial Num | - | 5002G20402 |
| Model Num | 48HJE005G | 48HJE005G |
| Type | RTU | RTU |
| Configuration | VERTICAL | VERTICAL |
| Num OA Filters 1 | - | 1 |
| OA Filter Size 1 | - | 28X14 |
| Num Final Filter 1 | - | 1 |
| Final Filter Size 1 | - | 35X24 |

| Motor Data | | |
|----------------|--------|-----------|
| | Design | Actual |
| Motor MFG | - | GE MOTORS |
| Horsepower | 0.63 | 1.0 |
| Motor Rpm | - | 1620 |
| Phase | 3 | 1 |
| Rated Voltage | 208 | 208 |
| Rated Amperage | - | 4.90 |

| Drive Data | |
|--------------------|--------------|
| | Actual |
| Motor Sheave Size | 3.25" |
| Motor Bore Size | 1/2" |
| Motor Sheave SetPt | 2 TURNS OPEN |
| Fan Sheave Size | 4" |
| Fan Sheave Bore | 5/8" |
| Belt CL Distance | 14.5" |
| Num of Belts | 1 |
| Belt Size | AX36 |
| Belt Alignment | VERIFIED |

| Test Data | | |
|------------------------|--------|--------------------|
| | Design | Actual |
| SF CFM | 1600 | 1633 |
| SF RPM | - | 916 |
| RA CFM | 1425 | 1446 |
| OA CFM | 175 | 187 |
| RL Voltage | - | 210/211/211 |
| RL Amperage | - | 2.5/2.4/2.5 |
| SF Rotation | - | CW |
| SF System SetPt | - | 2 TURNS OPEN |
| RA Damper Position | - | MECHANICAL LINKAGE |
| Min OA Damper Position | - | 0.25" OPEN |
| Min OA Damper Type | - | ECONOMIZER |

| Performance Data | | |
|------------------|--------|--------|
| | Design | Actual |
| MA Plenum SP | - | -0.20" |
| Fan Suction SP | - | -0.38" |
| Fan Discharge SP | - | 0.23 |
| Total ESP | 0.50" | 0.43" |
| Fan Total SP | - | 0.61" |

| General | |
|----------------------------|--------|
| | Actual |
| Fan Rotation Correct | YES |
| Unit Filters Clean | YES |
| Condensate Drain Installed | YES |

Completed By: Dylan Crisman on 04/30/2025

Notes:
Economizer not functional, OA damper manually set to achieve design airflow.

Written By: Dylan Crisman on 05/20/2025

Unit Data - PHOTO LOG



04/28/2025



04/28/2025

National TAB

Project:04-28-25 WALGREENS #6937 AURORA, IL
(REACTIVE)

AHU/RTU



Diffuser Supply (GRD)

RTU5/STOCK ROOM

| Asset | | | | | | | | | |
|------------|------------|------|--------|------------|-----|--------|--------|-----------|-------------|
| Asset Name | Location | Type | Size | DESIGN CFM | AK | CFM(1) | CFM(2) | FINAL CFM | % to design |
| SGRD1 | STOCK ROOM | 5 | 14X14" | 800 | 1.0 | 862 | 801 | 801 | 100.1 |
| SGRD2 | STOCK ROOM | 5 | 14X14" | 800 | 1.0 | 895 | 832 | 832 | 104.0 |
| Total | | | | 1600 | | 1757 | 1633 | 1633 | 102.06% |

National TAB

Project: 04-28-25 WALGREENS #6937 AURORA, IL
(REACTIVE)



System/Unit: AHU/RTU

Asset: RTU6

AREA:PHARMACY

| Unit Data | | |
|---------------------|-----------|-----------------|
| | Design | Actual |
| MFG | CARRIER | CARRIER |
| Serial Num | - | 0803G50105 |
| Model Num | 48HJF006G | 48HJF006G-541HQ |
| Type | RTU | RTU |
| Configuration | VERTICAL | VERTICAL |
| Num OA Filters 1 | - | 1 |
| OA Filter Size 1 | - | 28X14 |
| Num Final Filter 1 | - | 1 |
| Final Filter Size 1 | - | 35X24 |

| Motor Data | | |
|----------------|--------|----------|
| | Design | Actual |
| Motor MFG | - | MARATHON |
| Frame | - | 56Y |
| Motor Rpm | - | 1725 |
| Phase | 3 | 3 |
| Rated Voltage | 208 | 208 |
| Rated Amperage | - | 5.2 |

| Drive Data | |
|--------------------|--------------|
| | Actual |
| Motor Sheave Size | 3.75" |
| Motor Bore Size | 5/8" |
| Motor Sheave SetPt | 2 TURNS OPEN |
| Fan Sheave Size | 4" |
| Fan Sheave Bore | 7/8" |
| Belt CL Distance | 14.75" |
| Num of Belts | 1 |
| Belt Size | AX38 |
| Belt Alignment | VERIFIED |

| Test Data | | |
|------------------------|--------|--------------------|
| | Design | Actual |
| SF CFM | 2100 | 1979 |
| SF RPM | - | 1272 |
| RA CFM | 2100 | 1979 |
| OA CFM | 0 | 0 |
| RL Voltage | - | 211/210/209 |
| RL Amperage | - | 4.6/4.3/4.4 |
| SF Rotation | - | CW |
| SF System SetPt | - | 2 TURNS OPEN |
| RA Damper Position | - | MECHANICAL LINKAGE |
| Min OA Damper Position | - | CLOSED |
| Min OA Damper Type | - | ECONOMIZER |

| Performance Data | | |
|------------------|--------|--------|
| | Design | Actual |
| MA Plenum SP | - | -0.53" |
| Fan Suction SP | - | -0.88" |
| Fan Discharge SP | - | 0.38" |
| Total ESP | 0.50" | 0.91" |
| Fan Total SP | - | 1.26" |

| General | |
|----------------------------|--------|
| | Actual |
| Fan Rotation Correct | YES |
| Unit Filters Clean | YES |
| Condensate Drain Installed | YES |

Completed By: Dylan Crisman on 04/30/2025

Notes:
Economizer not functional, OA damper manually set to achieve design airflow.

Written By: Dylan Crisman on 05/20/2025

Unit Data - PHOTO LOG



04/28/2025



04/28/2025

National TAB

Project:04-28-25 WALGREENS #6937 AURORA, IL
(REACTIVE)

AHU/RTU



Diffuser Supply (GRD)

RTU6/PHARMACY

| Asset | | | | | | | | | |
|------------|-----------------|------|--------|------------|-----|--------|--------|-----------|-------------|
| Asset Name | Location | Type | Size | DESIGN CFM | AK | CFM(1) | CFM(2) | FINAL CFM | % to design |
| SGRD1 | PHARMACY | 2 | 24X24" | 575 | 1.0 | 658 | 567 | 567 | 98.6 |
| SGRD2 | PHARMACY | 2 | 24X24" | 575 | 1.0 | 505 | 588 | 588 | 102.3 |
| SGRD3 | PHARMACY | 2 | 24X24" | 575 | 1.0 | 546 | 560 | 560 | 97.4 |
| SGRD4 | PATIENT SEATING | 2 | 24X24" | 275 | 1.0 | 290 | 264 | 264 | 96.0 |
| Total | | | | 2000 | | 1999 | 1979 | 1979 | 98.95% |

Completed By: Dylan Crisman on 04/29/2025

National TAB

Project: 04-28-25 WALGREENS #6937 AURORA, IL
(REACTIVE)



System/Unit: FAN - Exhaust

Asset: EF2

AREA:EMPLOYEE BREAKROOM

| Unit Data | | |
|---------------|----------------|------------|
| | Design | Actual |
| MFG | GREENHECK | PENNBARRY |
| Model Num | G-80-DGEX-QD-D | DX11Q |
| Serial Num | - | F23OZ80299 |
| Type | DOWNBLAST | DOWNBLAST |
| Configuration | VERTICAL | VERTICAL |

| Test Data | | |
|------------------|--------|-------------------|
| | Design | Actual |
| CFM | 300 | 314 |
| Fan RPM | - | 314 |
| Fan Rotation | - | CCW |
| Motor RPM | - | 314 |
| System SetPt | - | MARKED@SPEED DIAL |
| RL Voltage | - | [2] |
| RL Amperage | - | [2] |
| Total ESP | 0.375" | 0.29" |
| Fan Inlet SP | - | -0.29" |
| Fan Discharge SP | - | ATM |

| Motor Data | | |
|------------------|--------|--------|
| | Design | Actual |
| Motor MFG | - | GENTEQ |
| Horsepower | - | 1/5 |
| Motor Rpm | - | 1725 |
| Phase | 1 | 1 |
| Voltage (rated) | 120 | 115 |
| Amperage (rated) | - | 3.0 |
| Service Factor | - | 1.15 |

Completed By: Dylan Crisman on 04/29/2025

- Notes:
- [1] Exhaust fan has significant noise/vibration when set at a lower speed to achieve design airflow.
 - [2] Exhaust fan is lightswitch configuration, unable to safely obtain amps and volts.

Written By: Michael McDonnell on 05/20/2025

Unit Data - PHOTO LOG



04/28/2025



04/28/2025

National TAB

Project: 04-28-25 WALGREENS #6937 AURORA, IL
(REACTIVE)



System/Unit: FAN - Exhaust

Asset: EF3

AREA: MENS + WOMENS RESTROOM

| Unit Data | | |
|---------------|----------------|-----------------|
| | Design | Actual |
| MFG | GREENHECK | PENNBARRY |
| Model Num | G-95-DGEX-QD-G | DX11Q |
| Serial Num | - | DX11QF23OZ80301 |
| Type | DOWNBLAST | DOWNBLAST |
| Configuration | VERTICAL | VERTICAL |

| Test Data | | |
|------------------|--------|-------------------|
| | Design | Actual |
| CFM | 500 | 508 |
| Fan RPM | - | 1725 |
| Fan Rotation | - | CCW |
| Motor RPM | - | 1725 |
| System SetPt | - | MAX SPEED AT DIAL |
| RL Voltage | - | [2] |
| RL Amperage | - | [2] |
| Total ESP | 0.375" | 0.41" |
| Fan Inlet SP | - | -0.41" |
| Fan Discharge SP | - | ATM |

| Motor Data | | |
|------------------|--------|--------|
| | Design | Actual |
| Motor MFG | - | GENTEQ |
| Horsepower | 0.125 | 1/5 |
| Motor Rpm | - | 1725 |
| Phase | 1 | 1 |
| Voltage (rated) | 120 | 115 |
| Amperage (rated) | - | 3.0 |
| Service Factor | - | 1.15 |

Completed By: Dylan Crisman on 04/28/2025

Notes:

- [1] Exhaust fan has significant noise/vibration when set at a lower speed to achieve design airflow.
- [2] Exhaust fan is lightswitch configuration, unable to safely obtain amps and volts.

Written By: Michael McDonnell on 05/20/2025

Unit Data - PHOTO LOG



04/28/2025



04/28/2025

National TAB

Project:04-28-25 WALGREENS #6937 AURORA, IL
(REACTIVE)

FAN - Exhaust



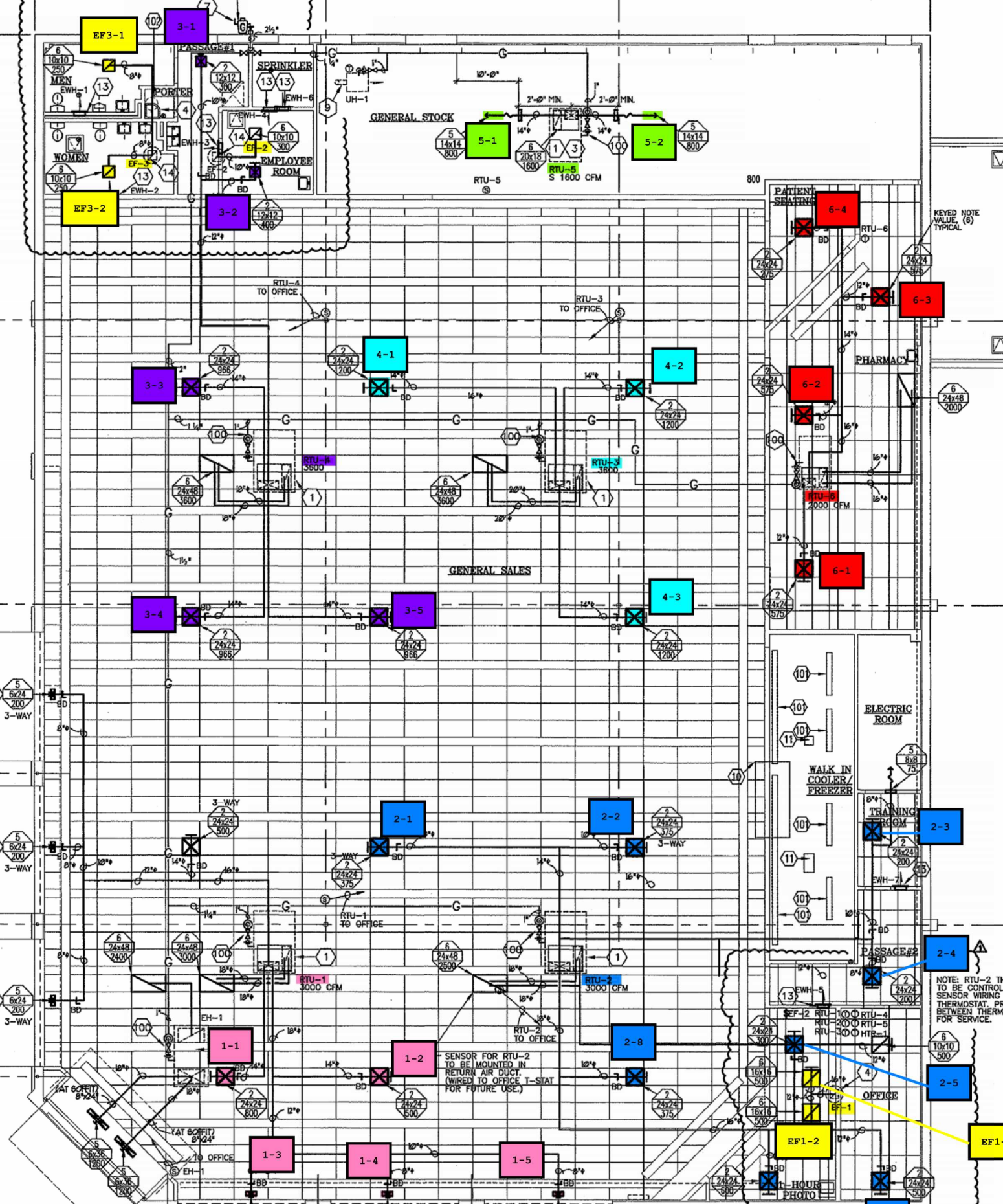
Diffuser Ret/Exh (GRD)

EF3/MENS + WOMENS RESTROOM

| Asset | | | | | | | | | |
|------------|-----------------|------|--------|------------|-----|--------|--------|-----------|-------------|
| Asset Name | Location | Type | Size | DESIGN CFM | AK | CFM(1) | CFM(2) | FINAL CFM | % to design |
| EGRD1 | MENS RESTROOM | 6 | 10X10" | 250 | 1.0 | 261 | 261 | 261 | 104.4 |
| EGRD2 | WOMENS RESTROOM | 6 | 10X10" | 250 | 1.0 | 247 | 247 | 247 | 98.8 |
| Total | | | | 500 | | 508 | 508 | 508 | 101.6% |

Completed By: Dylan Crisman on 04/28/2025

REFER TO CIVIL DWGS.
FOR CONTINUATION



KEYED NOTE
VALUE (6)
TYPICAL

GENERAL SALES

ELECTRIC ROOM

WALK IN
COOLER/
FREEZER

TRAINING ROOM

PASSAGE#2

OFFICE

HOURS PHOTO

SENSOR FOR RTU-2
TO BE MOUNTED IN
RETURN AIR DUCT
(WIRED TO OFFICE T-STAT
FOR FUTURE USE.)

NOTE: RTU-2 THERMOSTAT IS
TO BE CONTROLLER, BUT LE
SENSOR WIRING WITHIN THE
THERMOSTAT. PROVIDE 6" SP
BETWEEN THERMOSTATS
FOR SERVICE.