



## **SUBMITTAL**

### **Project**

Sephora Lakeside Metarie 2441016

### **Date**

Thursday, February 15, 2024

## Table Of Contents

Project: Sephora Lakeside Metarie 2441016  
Prepared By:

02/15/2024  
08:51PM

<b>RTU-1-2</b> .....	<b>3</b>
Unit Report.....	4
Certified Drawing.....	5
Performance Summary.....	8
Unit Feature Sheet.....	11
Spec Sheet.....	12
<b>RTU-3-4</b> .....	<b>13</b>
Unit Report.....	14
Certified Drawing.....	15
Performance Summary.....	18
Unit Feature Sheet.....	21
Spec Sheet.....	22

**RTU-1-2**

**Tag Cover Sheet  
Unit Report  
Certified Drawing  
Performance Report  
Unit Feature Sheet  
Spec Sheet**

## Unit Report For RTU-1-2

Project: Sephora Lakeside Metarie 2441016  
 Prepared By:

02/15/2024  
 08:51PM

**Unit Parameters**

Unit Model:.....**50FC-N12A2A5-0A4C0**  
 Unit Size:.....**12 (10 Tons)**  
 Volts-Phase-Hertz:.....**208-3-60**  
 Heating Type:.....**None**  
 Heat Control:**Single Circuit, Two Stage Cooling with Humidi-  
 MiZer**  
 Duct Cfg:.....**Vertical Supply / Vertical Return**

**Dimensions (ft. in.) & Weight (lb.) \*\*\***

Unit Length:.....**7' 4.125"**  
 Unit Width:.....**4' 11.5"**  
 Unit Height:.....**4' 1.375"**

\*\*\* Weights and Dimensions are approximate. Weight does not include roof curbs, unit packaging, field installed accessories or factory installed options. Approximate dimensions are provided primarily for shipping purposes. For exact dimensions and weights, refer to appropriate product data catalog.

**Base Unit Weight (Does not include any accessories):**  
**815**.....lb

**Lines and Filters**

Return Air Filter Type:.....**Throwaway**  
 Return Air Filter Quantity:.....**4**  
 Return Air Filter Size:.....**20 x 20 x 2**

**Selection includes construction throwaway filter into the base fan curve. This filter is not MERV Rated.**

**Unit Configuration**

Standard/Medium Static (EcoBlue)  
 Al/Cu - Al/Cu  
 Base Electro-mechanical controls  
 Hinged Panels and Unpowered Convenience Outlet  
 Non-Fused Disconnect  
 Standard Packaging  
 Humidi-MiZer™ Adaptive Dehumidification System

**Warranty Information**

5-Year compressor parts (STD.)  
 1-Year parts (STD.)

No optional warranties were selected.

**Ordering Information**

Part Number	Description	Quantity
50FC-N12A2A5-0A4C0	Rooftop Unit	2
<b>Field Installed Accessories</b>		
CRECOMZR069A01	Ultra LOW LEAK - Vertical EconoMi\$er	2
CRPECONV004A00	Hinged Panel Sealing Angle Kit	2
CRLVHLGD016A00	Louvered Condenser Coil Hail Guard	2
CRPWREXH022A01	Power Exhaust System	2

# Certified Drawing for RTU-1-2

Project: Sephora Lakeside Metarie 2441016  
Prepared By:

02/15/2024  
08:51PM

- NOTES:
- DIMENSIONS ARE IN INCHES. DIMENSIONS IN [ ] ARE IN MILLIMETERS.
  - CENTER OF GRAVITY
  - DIRECTION OF AIR FLOW
  - ALL VIEW DRAWN USING 3RD ANGLE

UNIT	OUTDOOR COIL TYPE	J	K	H
50FC-M08	RTPF	41 1/4 [1048]	33 3/4 [857]	15 7/8 [403]
50FC-M09	RTPF	49 3/8 [1253]	36 3/8 [925]	15 7/8 [403]
50FC-M12	RTPF	49 3/8 [1253]	36 3/8 [925]	15 7/8 [403]

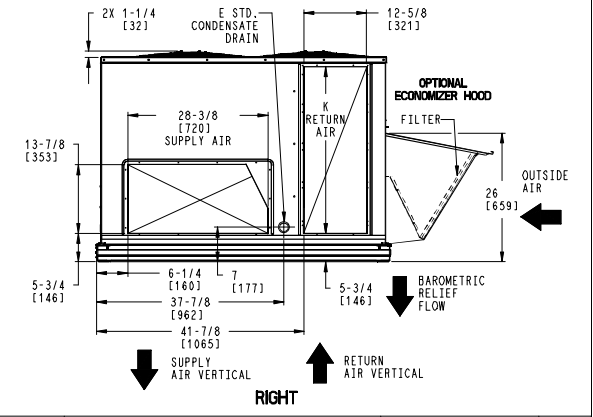
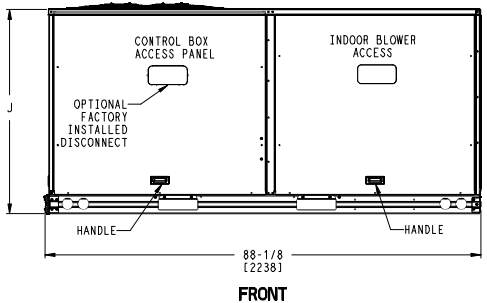
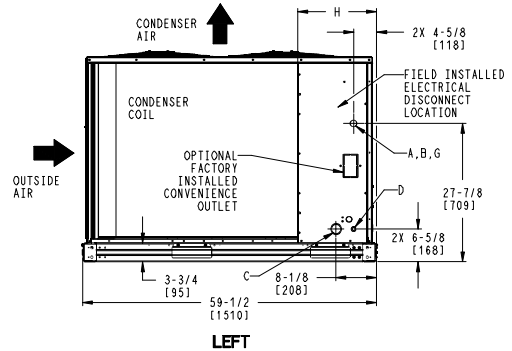
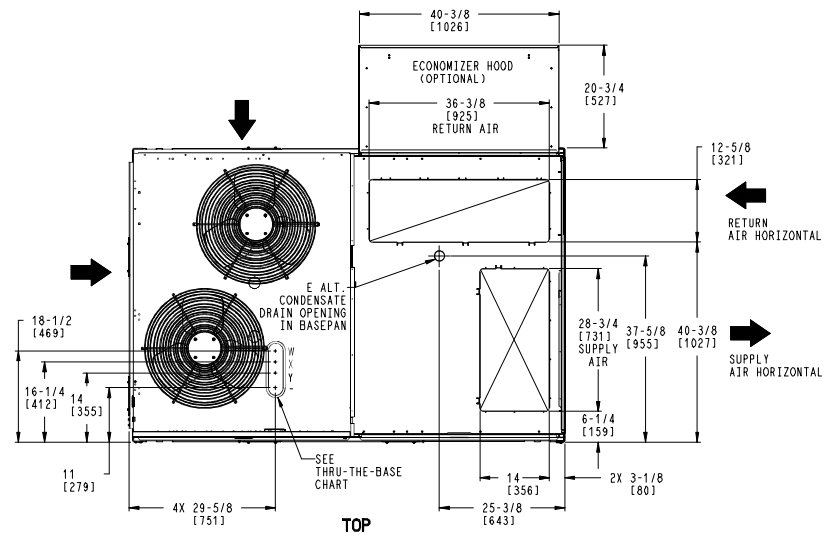
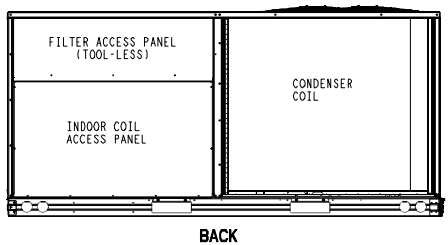
RTPF - ROUND TUBE, PLATE FIN (COPPER/ALUM)

THIS DOCUMENT IS THE PROPERTY OF CARRIER CORPORATION AND IS DELIVERED UPON THE EXPRESS CONDITION THAT THE CONTENTS WILL NOT BE DISCLOSED OR USED WITHOUT CARRIER CORPORATION'S WRITTEN CONSENT. SUBMISSION OF THESE DRAWINGS OR DOCUMENTS DOES NOT CONSTITUTE PART PERFORMANCE OR ACCEPTANCE OF CONTRACT.

CONNECTION SIZES	
A	1 3/8" [351] DIA FIELD POWER SUPPLY HOLE
B	2 1/2" [64] DIA POWER SUPPLY KNOCKOUT
C	1 3/4" [51] DIA GAUGE ACCESS PLUG
D	7/8" [22] DIA FIELD CONTROL WIRING HOLE
E	3/4"-14 NPT CONDENSATE DRAIN
G	2" [51] DIA POWER SUPPLY KNOCK-OUT

THRU-THE-BASE CHART (FIELD INST)			
THESE HOLES REQUIRED FOR USE WITH ACCY KITS: CRBTMPR002A01			
	THREADED CONDUIT SIZE	WIRE USE	REQ'D HOLE SIZES (MAX.)
W	1/2"	ACC.	7/8" [22.2]
X	1/2"	24V	7/8" [22.2]
Y	1 1/4" [002]	POWER	1 3/4" [44.4]

THRU-THE-BASE CHART (FIOP)  
FOR "THRU-THE-BASEPAN" FACTORY OPTION, FITTINGS FOR ONLY X & Y ARE PROVIDED:  
(1) 1/2" & (1) 1 1/4" ELECTRICAL FITTINGS.



ITC CLASSIFICATION	SHEET	DATE	SUPERCEDES	50FC 08-12 SINGLE ZONE ELECTRICAL COOLING WITH ELECTRIC HEAT	48TM006296	REV
U.S. ECCN:NSR	1 OF 3	03/12/21	-			-

# Certified Drawing for RTU-1-2

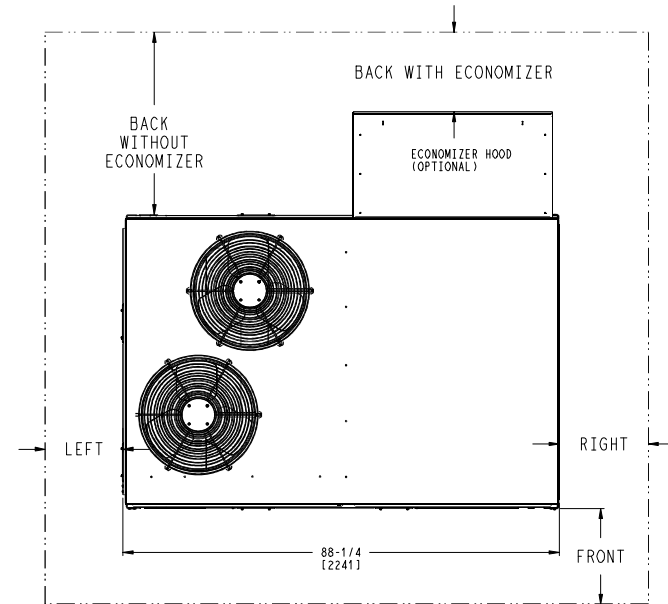
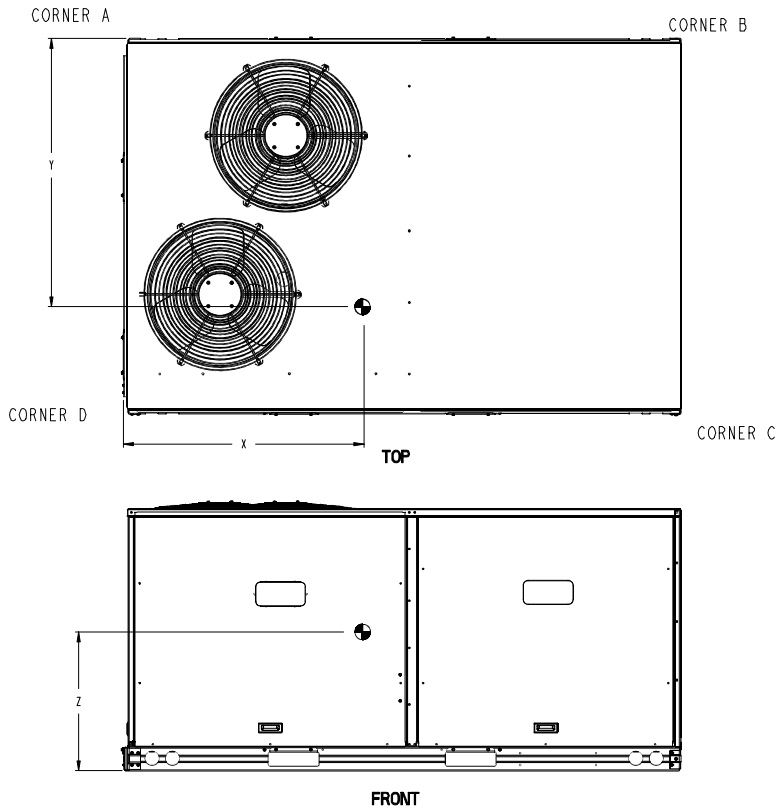
Project: Sephora Lakeside Metarie 2441016  
 Prepared By:

02/15/2024  
 08:51PM

UNIT	OUTDOOR COIL TYPE	STD. UNIT WEIGHT ***		CORNER WEIGHT (A)		CORNER WEIGHT (B)		CORNER WEIGHT (C)		CORNER WEIGHT (D)		C.G.					
		LBS.	KG.	LBS.	KG.	LBS.	KG.	LBS.	KG.	LBS.	KG.	X	Y	Z			
50FC-M08	RTPF	743	337	170	77	142	64	196	89	235	107	40	1/2 [1016]	34	1/2 [838]	20	[508]
50FC-M09	RTPF	805	365	196	89	251	114	201	91	157	71	49	1/2 [1257]	26	1/2 [673]	19	1/8 [486]
50FC-M12	RTPF	815	370	198	90	254	115	204	92	159	72	49	1/2 [1257]	26	1/2 [673]	19	1/8 [486]

\*\*\* STANDARD UNIT WEIGHT IS WITHOUT ELECTRIC HEAT AND WITHOUT PACKAGING.  
 FOR OTHER OPTIONS AND ACCESSORIES, REFER TO THE PRODUCT DATA CATALOG.

**Carrier** THIS DOCUMENT IS THE PROPERTY OF CARRIER CORPORATION AND IS DELIVERED UPON THE EXPRESS CONDITION THAT THE CONTENTS WILL NOT BE DISCLOSED OR USED WITHOUT CARRIER CORPORATION'S WRITTEN CONSENT. SUBMISSION OF THESE DRAWINGS OR DOCUMENTS DOES NOT CONSTITUTE PART PERFORMANCE OR ACCEPTANCE OF CONTRACT.



NOTE:  
 1. FOR ALL MINIMUM CLEARANCES LOCAL CODES OR JURISDICTIONS MAY PREVAIL.


SURFACE	CLEARANCE		OPERATING CLEARANCE
	SERVICE WITH CONDUCTIVE BARRIER	SERVICE WITH NONCONDUCTIVE BARRIER	
FRONT	48 [1219mm]	36 [914mm]	18 [457mm]
LEFT	48 [1219mm]	42 [1067mm]	18 [457mm]
BACK W/O ECON	48 [1219mm]	42 [1067mm]	18 [457mm]
BACK W/ECON	36 [914mm]	36 [914mm]	18 [457mm]
RIGHT	36 [914mm]	36 [914mm]	18 [457mm]
TOP	72 [1829mm]	72 [1829mm]	72 [1829mm]

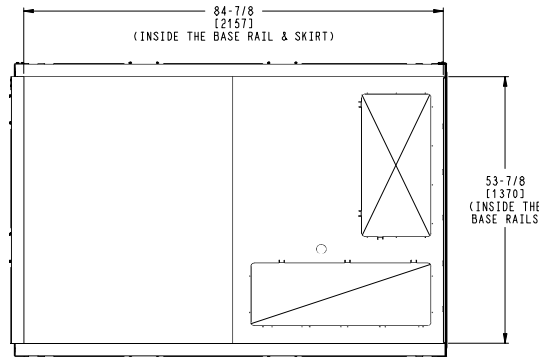
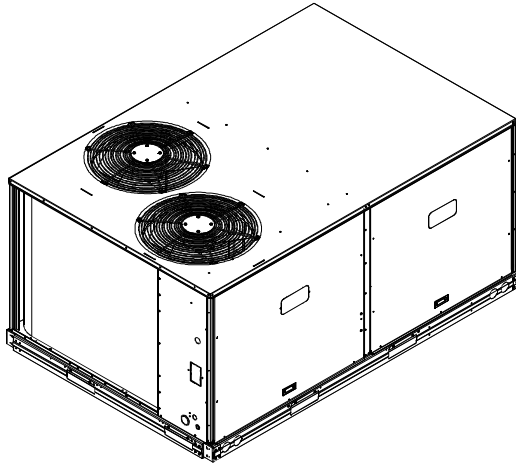
ITC CLASSIFICATION U.S. ECCN:NSR	SHEET 2 OF 3	DATE 03/12/21	SUPERCEDES -	50FC 08-12 SINGLE ZONE ELECTRICAL COOLING WITH ELECTRIC HEAT	48TM006296	REV -
-------------------------------------	-----------------	------------------	-----------------	--	------------	----------

# Certified Drawing for RTU-1-2

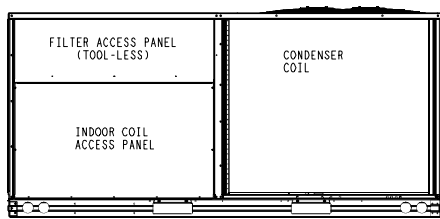
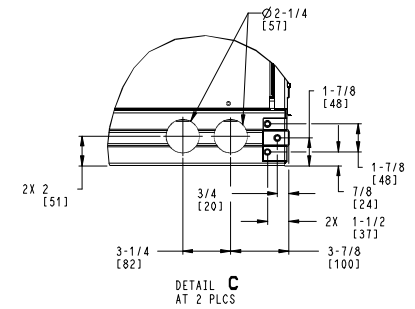
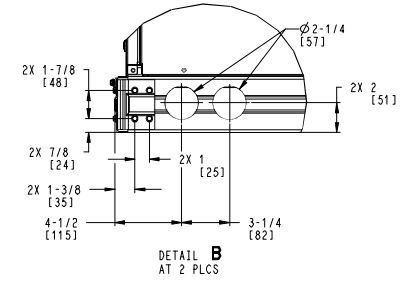
Project: Sephora Lakeside Metarie 2441016  
 Prepared By:

02/15/2024  
 08:51PM

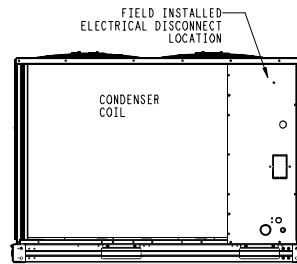
	THIS DOCUMENT IS THE PROPERTY OF CARRIER CORPORATION AND IS DELIVERED UPON THE EXPRESS CONDITION THAT THE CONTENTS WILL NOT BE DISCLOSED OR USED WITHOUT CARRIER CORPORATION'S WRITTEN CONSENT.	SUBMISSION OF THESE DRAWINGS OR DOCUMENTS DOES NOT CONSTITUTE PART PERFORMANCE OR ACCEPTANCE OF CONTRACT.
---	---	---



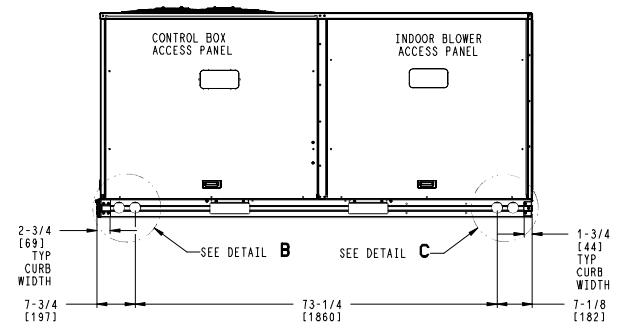
INSIDE BASERAIL DIMENSIONS  
**BOTTOM**



**BACK**



**LEFT**



**FRONT**

ITC CLASSIFICATION	SHEET	DATE	SUPERCEDES	50FC 08-12 SINGLE ZONE ELECTRICAL COOLING WITH ELECTRIC HEAT	48TM006296	REV
U. S. ECCN: NSR	3 OF 3	03/12/21	-			-

## Performance Summary For RTU-1-2

Project: Sephora Lakeside Metarie 2441016  
Prepared By:

02/15/2024  
08:51PM

### Part Number:50FC-N12A2A5-0A4C0

ARI EER:.....11.20  
IEER (Max Cooling at Normal Cooling Design Mode):.....15.2

#### Base Unit Dimensions

Unit Length:.....88.1 in  
Unit Width:.....59.5 in  
Unit Height:.....49.4 in

Base Unit Weight (Does not include any accessories):.....815 lb

#### Unit

Unit Voltage-Phase-Hertz:.....208-3-60  
Air Discharge:.....Vertical  
Fan Drive Type:.....Vane Axial  
Actual Airflow:.....3150 CFM  
Site Altitude:.....0 ft

#### Cooling Performance

Condenser Entering Air DB:.....95.0 F  
Evaporator Entering Air DB:.....80.0 F  
Evaporator Entering Air WB:.....67.0 F  
Evaporator Entering Air Enthalpy:.....31.44 BTU/lb  
Evaporator Leaving Air DB:.....55.3 F  
Evaporator Leaving Air WB:.....54.6 F  
Evaporator Leaving Air Enthalpy:.....22.91 BTU/lb  
Gross Cooling Capacity:.....120.87 MBH  
Gross Sensible Capacity:.....84.13 MBH  
Compressor Power Input:.....9.12 kW  
Coil Bypass Factor:.....0.053

#### Supply Fan

External Static Pressure:.....1.00 in wg  
Options / Accessories Static Pressure  
Humidi-MiZer Dehumidification System:.....0.14 in wg  
Economizer:.....0.12 in wg  
Power Exhaust:.....(Fan Data Includes Drop)  
Application External Static (ESP + Unit Opts/Acc.):.....1.25 in wg  
Fan RPM:.....1682  
Fan Power:.....1.72 BHP  
NOTE:.....Selected IFM RPM Range: 1181 - 2000

Selection includes construction throwaway filter into the base fan curve. This filter is not MERV Rated.

#### Power Exhaust

Return Duct Static:.....0.40 in wg  
Max. Air To Exhaust:.....2850 CFM

#### Electrical Data

Voltage Range:.....187 - 253  
Compressor #1 RLA:.....15.6  
Compressor #1 LRA:.....110  
Compressor #2 RLA:.....15.6  
Compressor #2 LRA:.....110  
Indoor Fan Motor Type:.....MED  
Indoor Fan Motor FLA (Total):.....6.4  
Power Supply MCA:.....49  
Power Supply MOCP (Fuse or HACR):.....60  
Disconnect Size FLA:.....51  
Disconnect Size LRA:.....241

## Performance Summary For RTU-1-2

Project: Sephora Lakeside Metarie 2441016  
 Prepared By:

02/15/2024  
 08:51PM

Electrical Convenience Outlet:..... **None**  
 Power Exhaust [Kit Qty / FLA(ea kit)]:..... **1 / 3.8**  
 Outdoor Fan [Qty / FLA (ea)]:..... **2 / 1.5**

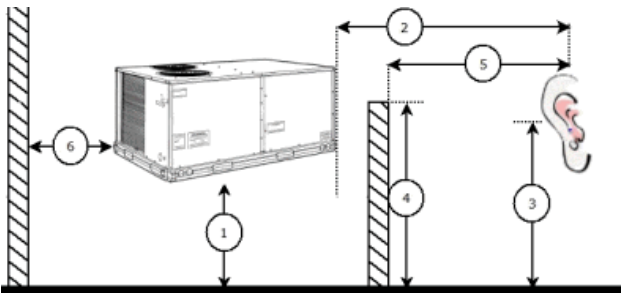
**Control Panel SCCR: 5kA RMS at Rated Symmetrical Voltage**

**Acoustics**

Sound Power Levels, db re 10E-12 Watts

	<b>Discharge</b>	<b>Inlet</b>	<b>Outdoor</b>
63 Hz	90.9	86.3	85.6
125 Hz	84.1	79.6	84.7
250 Hz	70.8	66.6	80.5
500 Hz	67.8	64.8	76.0
1000 Hz	66.3	63.1	72.4
2000 Hz	63.1	57.3	68.0
4000 Hz	63.6	55.2	62.8
8000 Hz	61.0	50.0	59.3
<b>A-Weighted</b>	<b>73.9</b>	<b>69.3</b>	<b>79.0</b>

**Advanced Acoustics**



**Advanced Acoustics Parameters**

- 1. Unit height above ground:..... **30.0** ft
- 2. Horizontal distance from unit to receiver:..... **50.0** ft
- 3. Receiver height above ground:..... **5.7** ft
- 4. Height of obstruction:..... **0.0** ft
- 5. Horizontal distance from obstruction to receiver:..... **0.0** ft
- 6. Horizontal distance from unit to obstruction:..... **0.0** ft

**Detailed Acoustics Information**

<b>Octave Band Center Freq. Hz</b>	<b>63</b>	<b>125</b>	<b>250</b>	<b>500</b>	<b>1k</b>	<b>2k</b>	<b>4k</b>	<b>8k</b>	<b>Overall</b>
A	85.6	84.7	80.5	76.0	72.4	68.0	62.8	59.3	89.2 Lw
B	59.4	68.6	71.9	72.8	72.4	69.2	63.8	58.2	78.5 LwA
C	53.2	52.3	48.1	43.6	40.0	35.6	30.4	26.9	56.8 Lp
D	27.0	36.2	39.5	40.4	40.0	36.8	31.4	25.8	46.1 LpA

**Legend**

- A Sound Power Levels at Unit's Acoustic Center, Lw
- B A-Weighted Sound Power Levels at Unit's Acoustic Center, LwA
- C Sound Pressure Levels at Specific Distance from Unit, Lp
- D A-Weighted Sound Pressure Levels at Specific Distance from Unit, LpA

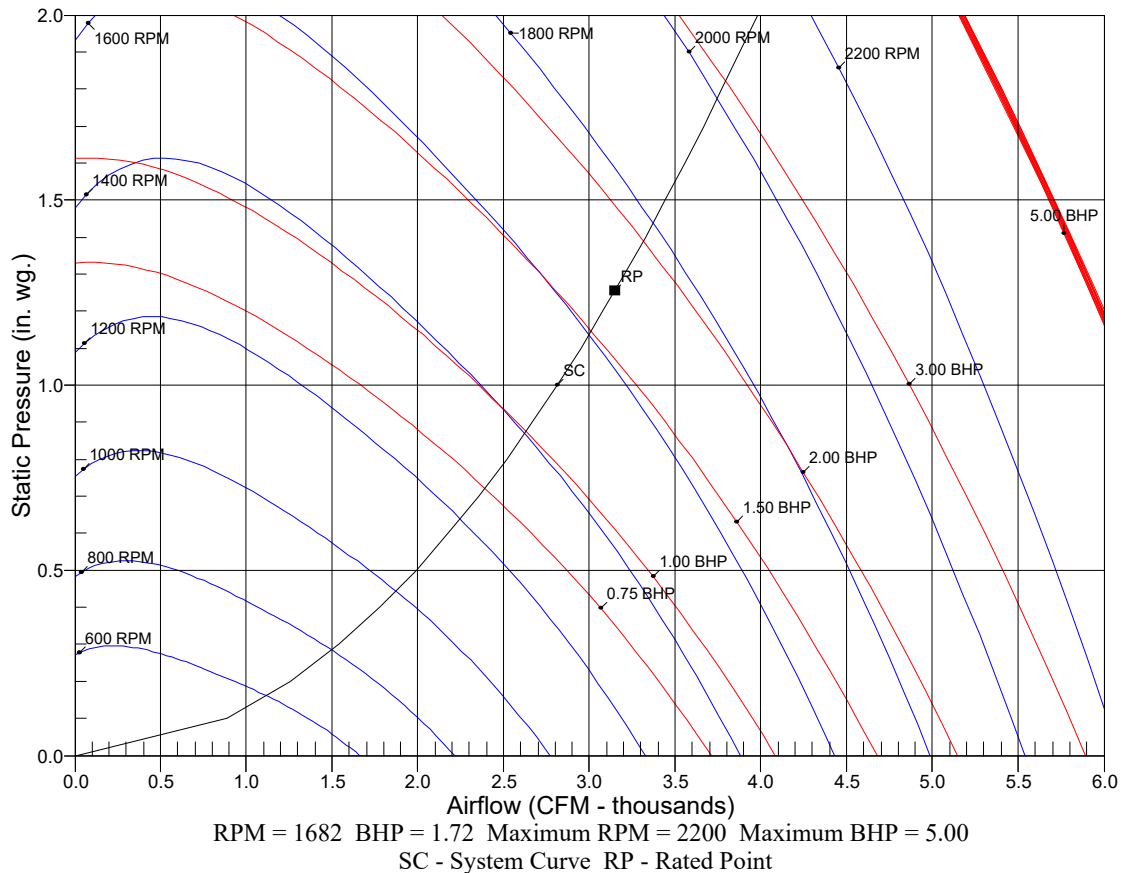
# Performance Summary For RTU-1-2

Project: Sephora Lakeside Metarie 2441016  
Prepared By:

02/15/2024  
08:51PM

Calculation methods used in this program are patterned after the ASHRAE Guide; other ASHRAE Publications and the AHRI Acoustical Standards. While a very significant effort has been made to insure the technical accuracy of this program, it is assumed that the user is knowledgeable in the art of system sound estimation and is aware of the tolerances involved in real world acoustical estimation. This program makes certain assumptions as to the dominant sound sources and sound paths which may not always be appropriate to the real system being estimated. Because of this, no assurances can be offered that this software will always generate an accurate sound prediction from user supplied input data. If in doubt about the estimation of expected sound levels in a space, an Acoustical Engineer or a person with sound prediction expertise should be consulted.

### Fan Curve



# Unit Feature Sheet for RTU-1-2

Project: Sephora Lakeside Metarie 2441016  
Prepared By:

02/15/2024  
08:51PM



## - 50FC

PACKAGED ROOFTOP ELECTRIC HEATING / ELECTRIC COOLING UNITS –  
15.2 IEER 7.5, 8.5, 10, 12.5, 15 TONS



ecoBlue technology



### WEATHERMAKER® SERIES

50FC units are single packaged electric heating, electric cooling units that are pre-wired and charged with Puron (R-410) refrigerant. The units are factory tested in both heating and cooling modes. All models use two stage cooling capacity control with a full active evaporator coil and new EcoBlue™ direct drive ECM indoor fan system

Approved and certified by:



Use of the AHRI Certified TM Mark indicates a manufacturer's participation in the program. For verification of certification for individual products, go to [www.ahridirectory.org](http://www.ahridirectory.org)

#### STANDARD FEATURES INCLUDE:

- Rated in accordance with AHRI Standards 340/360
- Puron (R-410A) HFC refrigerant
- Two-stage cooling capacity control on all models
- IEER's of 15.2, EER's up to 11.4
- Exceeds current DOE IEER efficiencies while meeting DOE's new stringent 2023 IEER efficiency requirements
- 2023 DOE, ASHRAE 90.1, and IECC energy compliant
- New Direct Drive – EcoBlue™ Technology indoor fan system uses Vane Axial fan design and electronically commutated motor. Indoor fan motor also delivers Staged Air Volume (SAV) fan speed control.
- Non-corrosive composite condensate pan in accordance with ASHRAE 62 Standard, sloping design; side or center drain
- TXV refrigerant metering system on all models
- Standard cooling operating range up to 125°F (52°C), except 14 size models with 115°F (46°C) and down to 40°F (-4°C), except 14 size models with 0°F (-18°C) Low Ambient controls allows cooling operation down to 0°F (-18°C).
- Pre-painted exterior panels and primer-coated interior panels tested to 500 hours salt spray protection
- New Unit Control Board with intuitive quick fan speed adjustment
- Low pressure, high pressure, mixed air temperature switch protection

#### MAINTENANCE FEATURES:

- Access panels with easy grip handles
- Innovative easy starting, no-strip screws on unit access panels
- Two-inch disposable return air filters and Tool-less filter access door
- New slide out - Vane Axial evaporator-fan system has no fan belts, pulleys, blower shaft and blower bearings

#### INSTALLATION FEATURES:

- Thru-the-bottom power entry capability
- Single point electric connections
- Full perimeter base rail with built-in rigging adapters and fork slots
- Field convertible from vertical to horizontal airflow. 16 size requires a special supply duct cover kit.

#### STANDARD WARRANTY:

- 5- year electric heaters
- 5-year compressor
- 3-year SystemVu™
- 1-year parts
- Many optional upgrades also available

#### OPTIONS INCLUDE BUT ARE NOT LIMITED TO:

- Intelligent SystemVu communicating controls
- Supply and Return Air Smoke Detectors, high static motors
- Louvered condenser coil guards
- Disconnect switch and convenience outlet options
- Stainless Steel heat exchanger option
- Corrosion resistant coil coating
- MERV-13, 4" Return Air Filters
- Patented Humidi-MiZer™ adaptive dehumidification system.
- Hinged access panels
- Integrated economizer system. Low and Ultra Low Leak versions
- Phase monitor and condensate overflow protection

For a complete list of options and accessories refer to Product Data

## Spec Sheet for RTU-1-2

Project: Sephora Lakeside Metarie 2441016  
Prepared By:

02/15/2024  
08:51PM

**RTU-3-4**

**Tag Cover Sheet  
Unit Report  
Certified Drawing  
Performance Report  
Unit Feature Sheet  
Spec Sheet**

## Unit Report For RTU-3-4

Project: Sephora Lakeside Metarie 2441016  
 Prepared By:

02/15/2024  
 08:51PM

### Unit Parameters

Unit Model:.....**50FC-B04A1A5-0A4C0**  
 Unit Size:.....**04 (3 Tons)**  
 Volts-Phase-Hertz:.....**208-3-60**  
 Heating Type:.....**Electric**  
 Heat Control:**Single Stage Compressor Models with Humidi-  
 MiZer**  
 Duct Cfg:.....**Vertical Supply / Vertical Return**

### Dimensions (ft. in.) & Weight (lb.) \*\*\*

Unit Length:.....**6' 2.375"**  
 Unit Width:.....**3' 10.625"**  
 Unit Height:.....**2' 9.375"**  
**Total Operating Weight:.....545 lb**

\*\*\* Weights and Dimensions are approximate. Weight does not include unit packaging. Approximate dimensions are provided primarily for shipping purposes. For exact dimensions and weights, refer to appropriate product data catalog.

### Lines and Filters

Return Air Filter Type:.....**Throwaway**  
 Return Air Filter Quantity:.....**2**  
 Return Air Filter Size:.....**16 x 25 x 2**

**Selection includes construction throwaway filter into the base fan curve. This filter is not MERV Rated.**

### Unit Configuration

Direct Drive - EcoBlue - Standard Static  
 Al/Cu - Al/Cu  
 Base Electro-mechanical controls  
 Hinged Panels and Unpowered Convenience Outlet  
 Non-Fused Disconnect  
 Standard Packaging  
 Humidi-MiZer™ Adaptive Dehumidification System

### Warranty Information

5-Year compressor parts (STD.)  
 5-Year electric heater (STD.)  
 1-Year parts (STD.)

No optional warranties were selected.

### Ordering Information

Part Number	Description	Quantity
50FC-B04A1A5-0A4C0	Rooftop Unit	2
<b>Field Installed Accessories</b>		
CRECOMZR067A01	Ultra LOW LEAK - Vertical EconoMi\$er X with solid-state W7220 controller	2
CRPECONV003A00	Hinged Panel Sealing Angle Kit	2
CRLVHLGD046A00	Louvered Condenser Coil Hail Guard	2
CRPWREXH030A01	Power Exhaust System (208/230-1-60)	2
CRHEATER328A00	Electric Heater	2
CRSINGLE037A00	Single Point Kit	2

# Certified Drawing for RTU-3-4

Project: Sephora Lakeside Metarie 2441016  
Prepared By:

02/15/2024  
08:51PM

**NOTES:**

1. DIMENSIONS ARE IN INCHES. DIMENSIONS IN ( ) ARE IN MILLIMETERS.
2. CENTER OF GRAVITY
3. DIRECTION OF AIR FLOW
4. ALL VIEW DRAWN USING 3RD ANGLE

UNIT	J	K
50FC**04	33 3/8 [847]	18 5/8 [472]
50FC**05	33 3/8 [847]	14 7/8 [377]
50FC**06	33 3/8 [847]	14 7/8 [377]
50FC**07	41 3/8 [1051]	18 5/8 [472]



THIS DOCUMENT IS THE PROPERTY OF UTC CLIMATE, CONTROLS & SECURITY AND IS DELIVERED UPON THE EXPRESS CONDITION THAT THE CONTENTS WILL NOT BE DISCLOSED OR USED WITHOUT WRITTEN CONSENT.

SUBMISSION OF THESE DRAWINGS OR DOCUMENTS DOES NOT CONSTITUTE PART PERFORMANCE OR ACCEPTANCE OF CONTRACT.

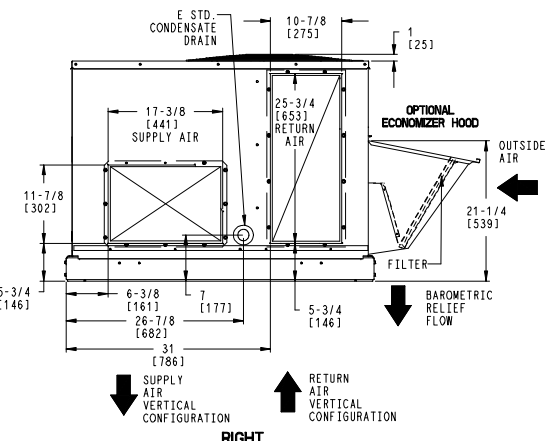
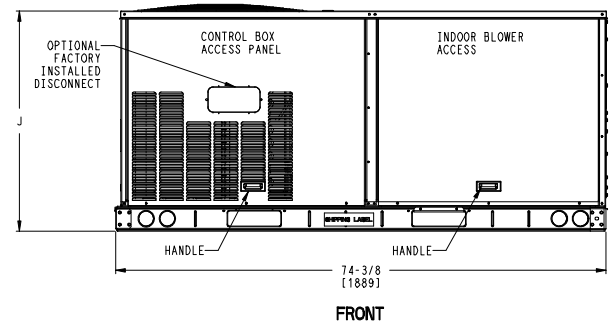
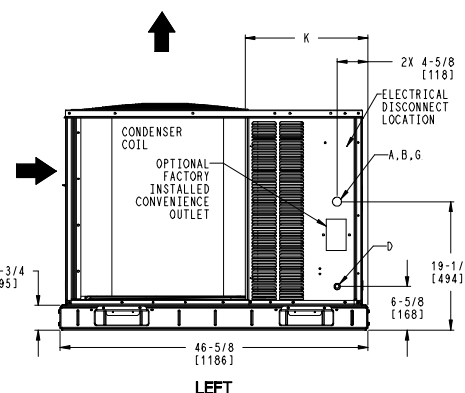
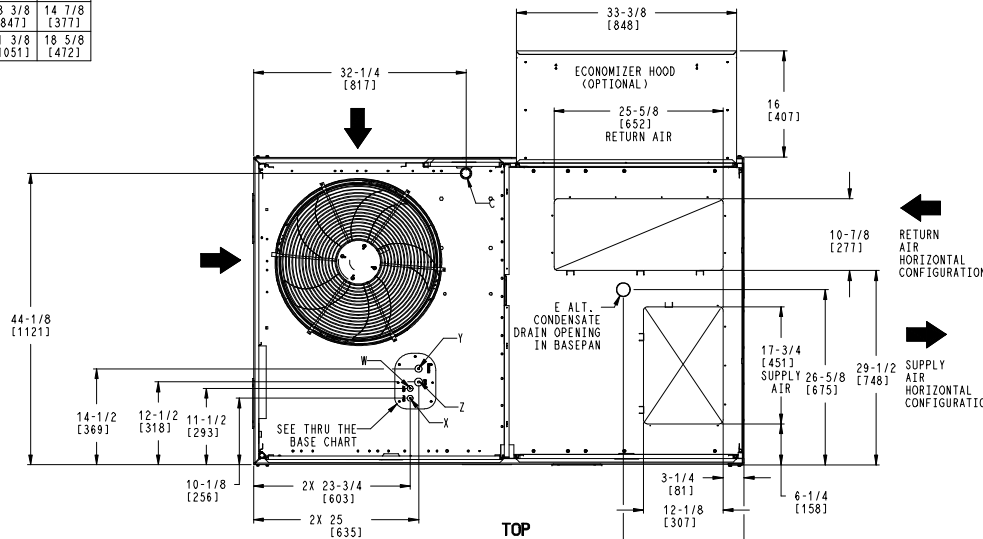
CONNECTION SIZES		
A	1 3/8" [35]	DIA FIELD POWER SUPPLY HOLE
B	2" [51]	DIA POWER SUPPLY KNOCKOUT
C	1 3/4" [44]	DIA GAUGE ACCESS PLUG
D	7/8" [22]	DIA FIELD CONTROL WIRING HOLE
E	3/4"-14	NPT CONDENSATE DRAIN
G	2 1/2" [64]	DIA POWER SUPPLY KNOCK-OUT

THRU-THE-BASE CHART THESE HOLES REQUIRED FOR USE CRBTWR008A00, 009A00			
	THREADED CONDUIT SIZE	WIRE USE	REQ'D HOLE SIZES (MAX.)
W	1/2"	115V	7/8" [22.2]
X	1/2"	24V	7/8" [22.2]
Y *	3/4"	POWER	1 1/8" [28.6]
Z**	(009A00) 1/2" FPT	GAS	1 1/8" [28.6]

FOR "THRU-THE-BASEPAN" FACTORY OPTION, FITTINGS FOR ONLY X, Y, & Z ARE PROVIDED

\* SELECT EITHER 3/4" OR 1/2" FOR POWER, DEPENDING ON WIRE SIZE

\*\* (008A00) PROVIDES 3/4" FPT THRU CURB FLANGE & FITTING.



ITC CLASSIFICATION	SHEET	DATE	SUPERCEDES	50FC 04-07 SINGLE PACKAGE ELECTRICAL COOLING WITH ELECTRIC HEAT	48TC003094	REV
U.S. ECCN:NSR	1 OF 3	09/07/18	06/22/18			A

# Certified Drawing for RTU-3-4

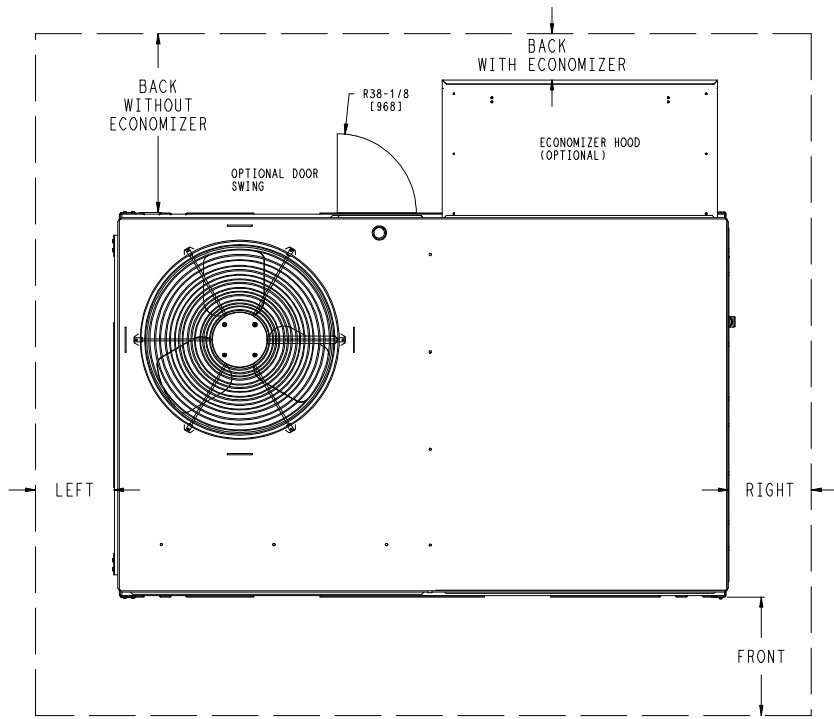
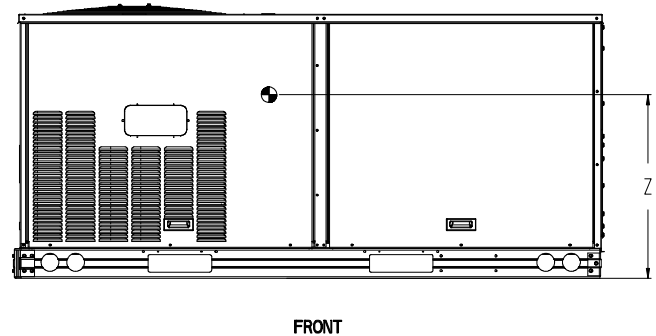
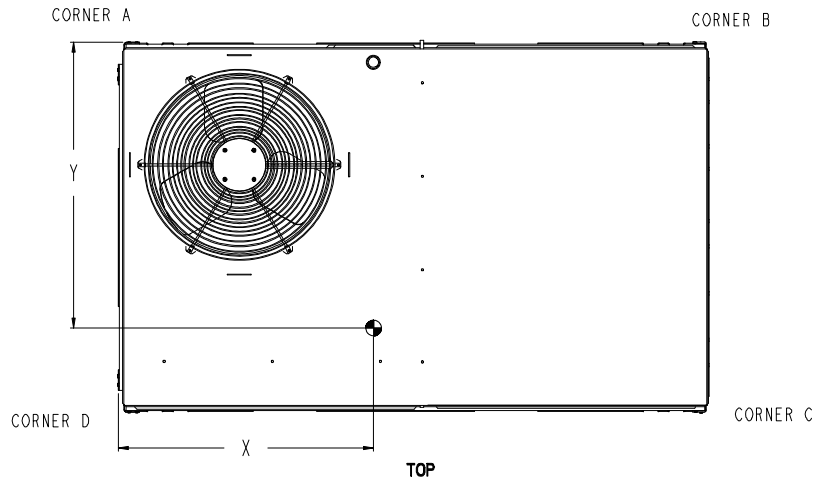
Project: Sephora Lakeside Metarie 2441016  
 Prepared By:

02/15/2024  
 08:51PM

UNIT	STD. UNIT WEIGHT*		CORNER WEIGHT (A)		CORNER WEIGHT (B)		CORNER WEIGHT (C)		CORNER WEIGHT (D)		C.G.		HEIGHT
	LBS.	KG.	LBS.	KG.	LBS.	KG.	LBS.	KG.	LBS.	KG.	X	Y	
50FC**04	437	198	110	50	107	49	108	49	112	51	36 5/8 [930]	23 9/16 [598]	18 1/2 [470]
50FC**05	498	226	136	62	124	56	114	52	125	57	35 1/2 [902]	22 3/8 [568]	18 1/4 [464]
50FC**06	511	232	139	63	127	58	117	53	128	58	35 1/2 [902]	22 3/8 [568]	18 1/4 [464]
50FC**07	562	255	154	70	137	62	127	58	143	65	35 [889]	22 1/2 [572]	19 1/2 [495]

\* STANDARD UNIT WEIGHT IS WITHOUT ELECTRIC HEAT AND WITHOUT PACKAGING.  
 FOR OTHER OPTIONS AND ACCESSORIES, REFER TO THE PRODUCT DATA CATALOG.

THIS DOCUMENT IS THE PROPERTY OF UTC CLIMATE, CONTROLS & SECURITY AND IS DELIVERED UPON THE EXPRESS CONDITION THAT THE CONTENTS WILL NOT BE DISCLOSED OR USED WITHOUT WRITTEN CONSENT. SUBMISSION OF THESE DRAWINGS OR DOCUMENTS DOES NOT CONSTITUTE PART PERFORMANCE OR ACCEPTANCE OF CONTRACT.



NOTE:  
 1. FOR ALL MINIMUM CLEARANCES LOCAL CODES OR JURISDICTIONS MAY PREVAIL.

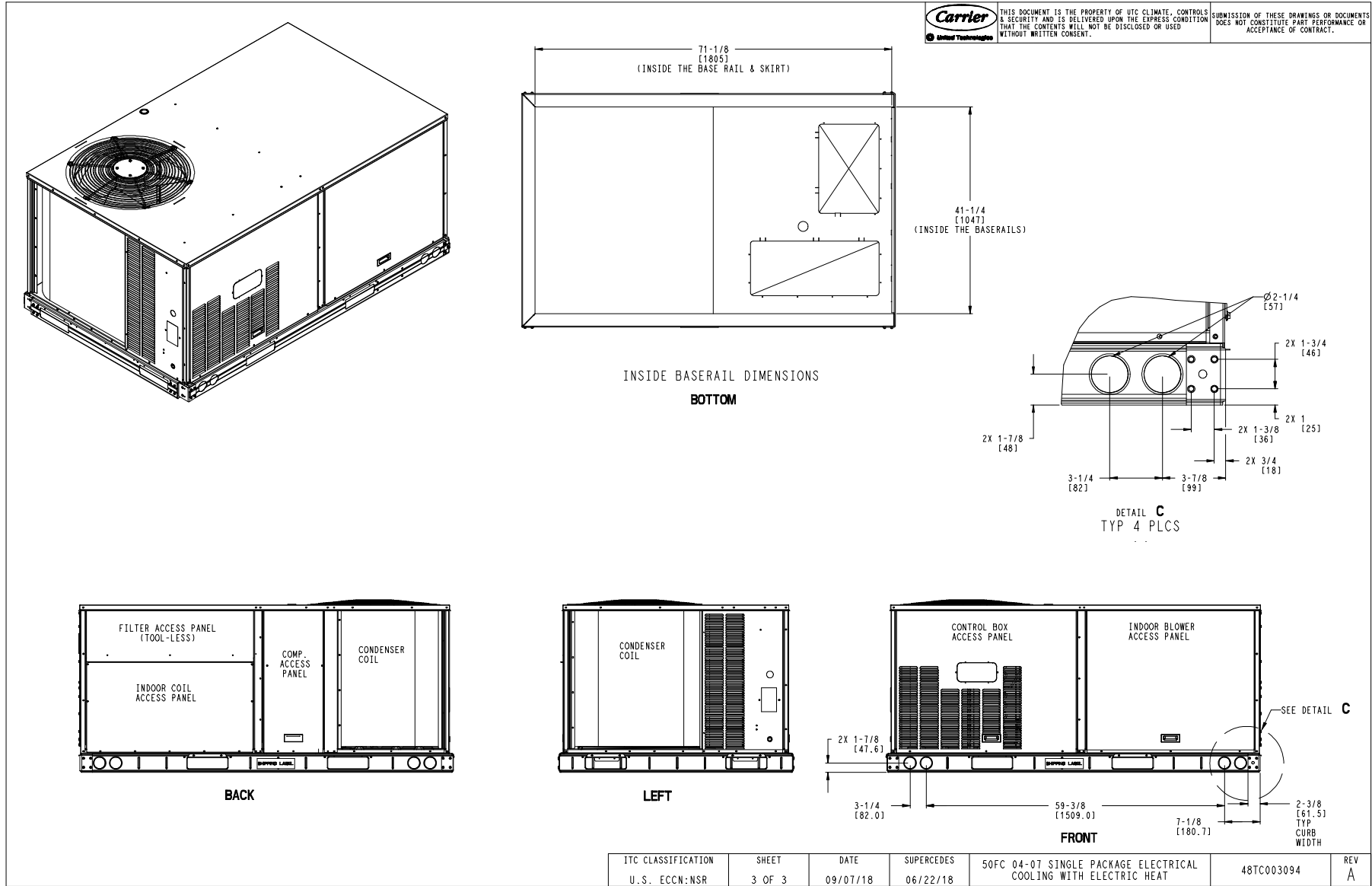
SURFACE	SERVICE WITH:		OPERATING CLEARANCE
	CONDUCTIVE BARRIER	NONCONDUCTIVE BARRIER	
FRONT	48 [1219mm]	36 [914mm]	18 [457mm]
LEFT	48 [1219mm]	42 [1067mm]	18 [457mm]
BACK W/O ECON	48 [1219mm]	42 [1067mm]	18 [457mm]
BACK W/ECON	36 [914mm]	36 [914mm]	18 [457mm]
RIGHT	36 [914mm]	36 [914mm]	18 [457mm]
TOP	72 [1829mm]	72 [1829mm]	72 [1829mm]

ITC CLASSIFICATION U.S. ECCN: NSR	SHEET 2 OF 3	DATE 09/07/18	SUPERCEDES 06/22/18	50FC 04-07 SINGLE PACKAGE ELECTRICAL COOLING WITH ELECTRIC HEAT	48TC003094	REV A
--------------------------------------	-----------------	------------------	------------------------	---	------------	----------

# Certified Drawing for RTU-3-4

Project: Sephora Lakeside Metarie 2441016  
 Prepared By:

02/15/2024  
 08:51PM



# Performance Summary For RTU-3-4

Project: Sephora Lakeside Metarie 2441016  
Prepared By:

02/15/2024  
08:51PM

## Part Number:50FC-B04A1A5-0A4C0

ARI SEER:.....14.00

### Base Unit Dimensions

Unit Length:.....74.4 in  
Unit Width:.....46.6 in  
Unit Height:.....33.4 in

### Operating Weight

Base Unit Weight:.....437 lb  
Single Stage Compressor Models with Humidi-MiZer:.....24 lb  
Hinged Panels and Unpowered Convenience Outlet:.....9 lb  
Non-Fused Disconnect:.....5 lb

### Accessories

Power Exhaust System (208/230-1-60):.....50 lb  
Electric Heater:.....10 lb  
Single Point Kit:.....10 lb

Total Operating Weight:.....545 lb

### Unit

Unit Voltage-Phase-Hertz:.....208-3-60  
Air Discharge:.....Vertical  
Fan Drive Type:.....Vane Axial  
Actual Airflow:.....1050 CFM  
Site Altitude:.....0 ft

### Cooling Performance

Condenser Entering Air DB:.....95.0 F  
Evaporator Entering Air DB:.....80.0 F  
Evaporator Entering Air WB:.....67.0 F  
Evaporator Entering Air Enthalpy:.....31.44 BTU/lb  
Evaporator Leaving Air DB:.....59.1 F  
Evaporator Leaving Air WB:.....56.8 F  
Evaporator Leaving Air Enthalpy:.....24.23 BTU/lb  
Gross Cooling Capacity:.....34.05 MBH  
Gross Sensible Capacity:.....23.70 MBH  
Compressor Power Input:.....2.49 kW  
Coil Bypass Factor:.....0.045

### Heating Performance

Heating Airflow:.....1050 CFM  
Entering Air Temp:.....70.0 F  
Leaving Air Temp:.....106.1 F  
Electric Heating Capacity:.....12.00 kW

### Supply Fan

External Static Pressure:.....0.60 in wg  
Options / Accessories Static Pressure  
Electric Heaters:.....0.05 in wg  
Humidi-MiZer Dehumidification System:.....0.04 in wg  
Economizer:.....0.03 in wg  
Power Exhaust:.....(Fan Data Includes Drop)  
Application External Static (ESP + Unit Opts/Acc.):.....0.72 in wg  
Fan RPM:.....1666  
Fan Power:.....0.34 BHP  
NOTE:.....Selected IFM RPM Range: 189 - 1890

Selection includes construction throwaway filter into the base fan curve. This filter is not MERV Rated.

### Power Exhaust

## Performance Summary For RTU-3-4

Project: Sephora Lakeside Metarie 2441016  
 Prepared By:

02/15/2024  
 08:51PM

Return Duct Static:..... **0.40** in wg  
 Max. Air To Exhaust:..... **500** CFM

### Electrical Data

Voltage Range:..... **187 - 253**  
 Compressor #1 RLA:..... **10.4**  
 Compressor #1 LRA:..... **73**  
 Actual Electric Heater kW:..... **12**  
 Electric Heater FLA:..... **33.4**  
 Indoor Fan Motor Type:..... **STD**  
 Indoor Fan Motor FLA (Total):..... **4.3**  
 Power Supply MCA:..... **50**  
 Power Supply MOCP (Fuse or HACR):..... **50**  
 Disconnect Size FLA:..... **46**  
 Disconnect Size LRA:..... **85**  
 Electrical Convenience Outlet:..... **None**  
 Power Exhaust [Kit Qty / FLA(ea kit)]:..... **1 / 1.9**  
 Outdoor Fan [Qty / FLA (ea)]:..... **1 / 1.5**  
 Electric Heater Part Number:..... **328A**  
 Electric Heater Number of Stages:..... **1**

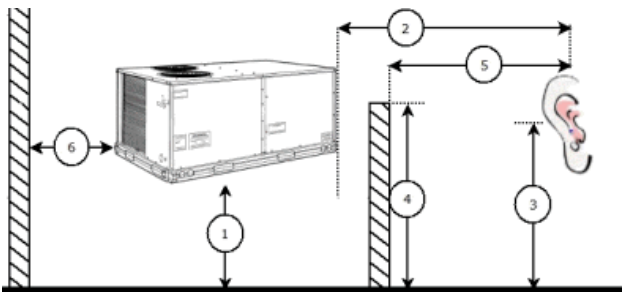
**Control Panel SCCR: 5kA RMS at Rated Symmetrical Voltage**

### Acoustics

Sound Power Levels, db re 10E-12 Watts

	Discharge	Inlet	Outdoor
63 Hz	89.8	83.2	85.6
125 Hz	81.4	75.5	84.7
250 Hz	73.0	67.0	80.5
500 Hz	65.4	58.9	76.0
1000 Hz	62.5	60.4	72.4
2000 Hz	59.3	51.9	68.0
4000 Hz	56.0	45.9	62.8
8000 Hz	55.9	41.1	59.3
A-Weighted	71.4	65.8	79.0

### Advanced Acoustics



### Advanced Acoustics Parameters

1. Unit height above ground:..... **30.0** ft  
 2. Horizontal distance from unit to receiver:..... **50.0** ft  
 3. Receiver height above ground:..... **5.7** ft  
 4. Height of obstruction:..... **0.0** ft  
 5. Horizontal distance from obstruction to receiver:..... **0.0** ft  
 6. Horizontal distance from unit to obstruction:..... **0.0** ft

# Performance Summary For RTU-3-4

Project: Sephora Lakeside Metarie 2441016  
 Prepared By:

02/15/2024  
 08:51PM

## Detailed Acoustics Information

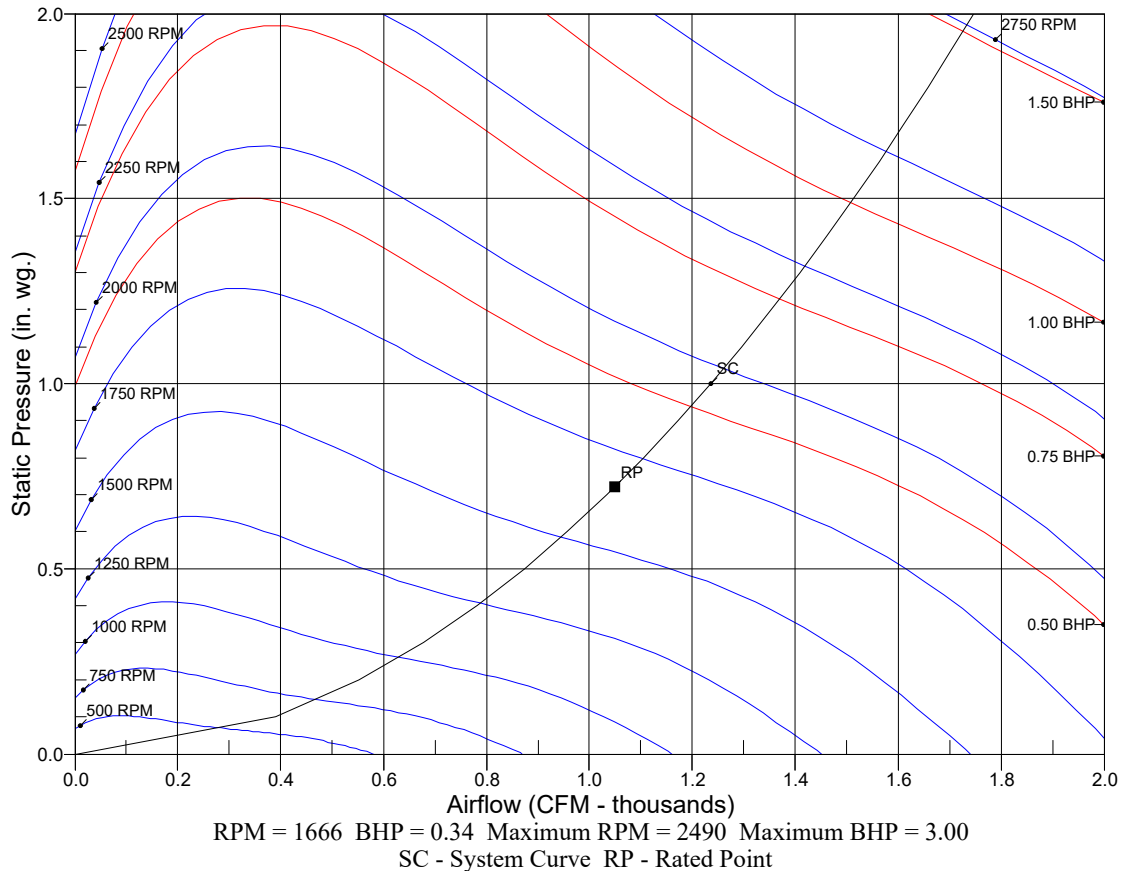
Octave Band Center Freq. Hz	63	125	250	500	1k	2k	4k	8k	Overall
A	85.6	84.7	80.5	76.0	72.4	68.0	62.8	59.3	89.2 Lw
B	59.4	68.6	71.9	72.8	72.4	69.2	63.8	58.2	78.5 LwA
C	53.2	52.3	48.1	43.6	40.0	35.6	30.4	26.9	56.8 Lp
D	27.0	36.2	39.5	40.4	40.0	36.8	31.4	25.8	46.1 LpA

### Legend

- A Sound Power Levels at Unit's Acoustic Center, Lw
- B A-Weighted Sound Power Levels at Unit's Acoustic Center, LwA
- C Sound Pressure Levels at Specific Distance from Unit, Lp
- D A-Weighted Sound Pressure Levels at Specific Distance from Unit, LpA

Calculation methods used in this program are patterned after the ASHRAE Guide; other ASHRAE Publications and the AHRI Acoustical Standards. While a very significant effort has been made to insure the technical accuracy of this program, it is assumed that the user is knowledgeable in the art of system sound estimation and is aware of the tolerances involved in real world acoustical estimation. This program makes certain assumptions as to the dominant sound sources and sound paths which may not always be appropriate to the real system being estimated. Because of this, no assurances can be offered that this software will always generate an accurate sound prediction from user supplied input data. If in doubt about the estimation of expected sound levels in a space, an Acoustical Engineer or a person with sound prediction expertise should be consulted.

## Fan Curve



# Unit Feature Sheet for RTU-3-4

Project: Sephora Lakeside Metarie 2441016  
Prepared By:

02/15/2024  
08:51PM



## PACKAGED ROOFTOP ELECTRIC COOLING/ELECTRIC HEATING UNITS 3, 4, 5 TONS - 13.4 SEER2 and 14.0 SEER, 6 TON - 15.2 IEER



### WEATHERMAKER SERIES

50FC units are single packaged electric cooling, electric heating units that are pre-wired and charged with Puron (R-410) refrigerant. The units are factory tested in both heating and cooling modes. Units are rated in accordance with AHRI Standards 210/240 (04-06 sizes) and 340/360 (07 size). 3-5 ton models use single stage cooling capacity control. 6 ton model uses two stage cooling capacity control.

Approved and certified by:



#### STANDARD FEATURES INCLUDE:

- Puron (R-410A) HFC refrigerant
- Meets or exceeds ASHRAE 90.1 energy efficiency levels
- Scroll compressors with internal line break and overload protection
- Single-stage cooling capacity 04-06 models, Two Stage on 07 models
- SEER's to 14.0, SEER2's to 13.8, IEER's to 15.2
- Acutrol™ refrigerant metering system on 04-06 models, TXV on 07 size models
- Exclusive non-corrosive composite condensate pan in accordance with ASHRAE Standard 62, sloping design, side or center drain
- Standard cooling operation up to 115°F (46°C) and down to 40°F (4°C) - down to 25° F (-4° C) with winter start kit.
- Pre-painted exterior panels and primer-coated interior panels tested to 500 hours salt spray protection
- Fully insulated cabinet
- NEW Direct Drive – EcoBlue™ Technology Indoor fan system uses Vane Axial fan design and electronically commutated motor
- New Unit Control Board with intuitive quick fan speed adjustment
- Low pressure and high pressure switch protected.

#### MAINTENANCE FEATURES:

- Access panels with easy grip handles
- Innovative easy starting, no-strip screws on unit access panels
- Two-inch disposable return air filters and Tool-less filter access door
- New unit control board to facilitate simple safety circuit troubleshooting and simplified control box arrangement

#### INSTALLATION FEATURES:

- Thru-the-bottom power entry capability
- Single point electric connections
- Full perimeter base rail with built-in rigging adapters and fork slots
- Field convertible from vertical to horizontal airflow

#### STANDARD WARRANTY:

- 5-year electric heaters
- 5-year compressor
- 3-year SystemVu™
- 1-year parts
- Many optional upgrades also available

#### OPTIONS INCLUDE BUT ARE NOT LIMITED TO:

- Intelligent SystemVu communicating controls
- RTU Open Multi-Protocol DDC Controls
- Supply and Return Air Smoke Detectors, high static motors
- Louvered condenser coil guards
- Disconnect switch and convenience outlet options
- Corrosion resistant coil coating.
- MERV-8 Return Air Filters
- Patented Humidi-MiZer® adaptive dehumidification system.
- Hinged access panels
- Integrated economizer system. Low and Ultra Low Leak versions
- Phase Monitor Protection
- Condensate Overflow Protection

For a complete list of options and accessories refer to the Product Data Catalog for this unit.

## Spec Sheet for RTU-3-4

Project: Sephora Lakeside Metarie 2441016  
Prepared By:

02/15/2024  
08:51PM