

NEWPORT ON THE LEVEE EXCHANGE BUILDING GALLEY ON THE LEVEE

CLIENT



212 East 3rd Street
Suite 300
Cincinnati, OH 45202
T 513.721.2744
F 513.721.0332

ARCHITECT

reztark

Reztark Architecture PC, Inc.
601 Main Street
Suite 200
Cincinnati, OH 45202
T 513.233.3333
F 513.233.3434

CONSULTANTS

MEP
KLH Engineers
1538 Alexandria Pike
Suite 11
Ft. Thomas, KY 41075
T 859.442.8050

STRUCTURAL
Thomson Baker + Associates
2055 Reading Road
Suite 450
Cincinnati, OH 45202
T 513.579.8200

SEAL

ISSUED: PERMIT | 01/27/2023

REVISED:

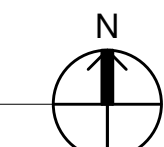
| NO. | DATE | DESCRIPTION |
|-----|---------|-------------|
| 1 | 5.15.23 | REVISION 1 |

NEW WORK KITCHEN NOTES
Kitchen Hood exhaust design is by the Kitchen equipment supplier.
Total Exhausted air: 6,300 CFM (total for all four hoods)
Total Supply Air/Make up air from (DOAS unit) RTU-28: 4,900 CFM
Total Deficit air to be made up by Building HVAC: 1400 CFM
RTU-27: 2120 CFM OA
Total Building HVAC: 2120 CFM OA
Toilet Exhaust: 500 CFM
Trash Exhaust: 150 CFM
Total Space Pressure: 2120 - 1400 - 650 = +70 CFM OA

EXPOSED DOUBLE-WALL DUCTWORK AND DUCT MOUNTED AIR DEVICES IN THE DINING AND BAR AREAS.
NEW SPIRAL DUCTWORK SHALL BE PAINT-GRIP TO BE PAINTED IN THE FIELD BY OTHERS.
BAR AND DINING AREA ARE DESIGNED ASSUMING A CLOSED ENVELOPE WITH DOORS AND WINDOWS CLOSED. HVAC SYSTEM IS NOT DESIGNED TO PROVIDE COOLING WHEN OPERABLE PARTITIONS ARE OPEN.

NO MECHANICAL SCOPE OF WORK

5/11/2023 5:11:21 PM



NEWPORT ON THE LEVEE EXCHANGE BUILDING GALLEY ON THE LEVEE

CLIENT



212 East 3rd Street
Suite 300
Cincinnati, OH 45202
T 513.721.2744
F 513.721.0332

ARCHITECT

reztark

Reztark Architecture PC, Inc.
601 Main Street
Suite 200
Cincinnati, OH 45202
T 513.233.3333
F 513.233.3434

CONSULTANTS

MEP: KLH Engineers
1538 Alexandria Pike
Suite 11
Ft. Thomas, KY 41075
T 859.442.8050

STRUCTURAL: Thorson Baker + Associates
2055 Reading Road
Suite 450
Cincinnati, OH 45202
T 513.579.8200

SEAL

ISSUED: PERMIT | 01/27/2023

REVISED:

| NO. | DATE | DESCRIPTION |
|-----|---------|-------------|
| 1 | 5.15.23 | REVISION 1 |

5/11/2023 5:11:30 PM

HV SECOND FLOOR - FLOORPLAN - EXCHANGE
M113.2B
3/16" = 1'-0"

M113.2B

KLH PROJ #: 24522

HVAC DIFFUSERS AND REGISTERS SCHEDULE

| TAG | MANUFACTURER | MODEL | FACE | MOUNTING | MATERIAL | FINISH | DAMPER TYPE | BORDER STYLE | REMARKS | DESCRIPTION |
|------|--------------|--------|---------|----------|----------|--|----------------|-----------------|------------------|-------------|
| CD-1 | TITUS | 300RL | 24"x24" | CEILING | ALUMINUM | STANDARD WHITE | OPPOSED BLADE | LAY IN MOUNTING | | |
| ER-1 | TITUS | 300RL | 12"x12" | CEILING | ALUMINUM | STANDARD WHITE | OPPOSED BLADE | SURFACE MOUNT | | |
| RG-1 | TITUS | 300RL | 24"x24" | CEILING | ALUMINUM | STANDARD WHITE | OPPOSED BLADE | LAY IN MOUNTING | | |
| RG-2 | TITUS | 300RL | 36"x36" | CEILING | ALUMINUM | STANDARD WHITE | OPPOSED BLADE | SURFACE MOUNT | | |
| RG-3 | TITUS | 300RL | 12"x12" | CEILING | ALUMINUM | STANDARD WHITE | OPPOSED BLADE | SURFACE MOUNT | | |
| SR-1 | TITUS | S300FL | 24"x12" | DUCT | ALUMINUM | BLACK FINISH G.C. TO FIELD PAINT TO MATCH CEILING OR WALLS | PARALLEL BLADE | SURFACE MOUNT | AIR SCOOP DAMPER | |
| WC-1 | BROAN | 643FA | | SIDEWALL | ALUMINUM | METALLESCENT ALUM. BAKED ENAMEL | (none) | SURFACE MOUNT | | |

HVAC ELECTRICAL COORDINATION SCHEDULE EXCHANGE

| ABBREVIATIONS | CONTRACTOR TYPE | MOTOR CONTROL TYPE | CONTROL TYPE |
|---------------|----------------------------|--------------------|---------------------------------|
| DC | LOCAL DISCONNECT | CS | COMBINATION STARTER |
| MC | MOTOR CONTROL (POWER) | MCC | MOTOR CONTROL STARTER |
| SD | DUCT SMOKE DETECTOR | MS | MAGNETIC STARTER OR CONTACT |
| FCN | FIRE PROTECTION CONTRACTOR | MS | MANUAL STARTER |
| HC | GENERAL CONTRACTOR | MFD | VARIABLE FREQUENCY DRIVE |
| HC | HVAC CONTRACTOR | MSR | MANUAL STARTER W/ CONTROL RELAY |
| MFR | MANUFACTURER | PC | PLUMBING CONTRACTOR |
| OR | OWNER OR OTHERS | OR | OWNER OR OTHERS |

HVAC AIR CURTAINS SCHEDULE

Equipment shall be braced and labeled by the equipment manufacturer to withstand the minimum scheduled available fault current value for listed equipment.

| EQUIPMENT MARK | DESCRIPTION | LOCATION | STATUS | WEIGHT (lbs) | MANUFACTURER | MODEL | CFM (cfm) | HTG MBH (mbh) | HTG LAT (Deg F) | EMERGENCY | ELECTRIC CONNECTION SUMMARY | AVAILABLE FAULT CURRENT |
|----------------|-----------------------------|-----------------|-----------|--------------|--------------|-------------|-----------|---------------|-----------------|-----------|---|-------------------------|
| AC-1 | AIR CURTAIN W/ELECTRIC HEAT | DINING AREA 101 | FOOD HALL | 190 | BERNER | ARD12-2072E | 3174 | 96 | 98 | NO | AC-1A - 480V/3PH, 28 KW HTG, 37.9A FLA, 47.3 MCA, 50A OCP | |
| AC-2 | AIR CURTAIN W/ELECTRIC HEAT | DINING AREA 101 | FOOD HALL | 190 | BERNER | ARD12-2072E | 3174 | 96 | 98 | NO | AC-2A - 480V/3PH, 28 KW HTG, 37.9A FLA, 47.3 MCA, 50A OCP | |

HVAC ROOFTOP UNITS SCHEDULE

Equipment shall be braced and labeled by the equipment manufacturer to withstand the minimum scheduled available fault current value for listed equipment.

| EQUIPMENT MARK | DESCRIPTION | LOCATION | STATUS | WEIGHT (lbs) | MANUFACTURER | MODEL | MIN EER | CFM (cfm) | ESP (in WC) | OACFM (cfm) | CO2 CFM (cfm) | NOMINAL TONS | MAT CLG DB (Deg F) | MAT CLG WB (Deg F) | CLG MBH (mbh) | CLG SENS (mbh) | LAT DB (Deg F) | LAT CLG WB (Deg F) | MT HTG (mbh) | HTG MBH (mbh) | MIN HTG (mbh) | APUE | GAS HTG IN (mbh) | GAS HTG OUT (mbh) | MIN GAS PRESSURE (in WC) | MAX GAS PRESSURE (in WC) | EMERGENCY | ELECTRIC CONNECTION SUMMARY | AVAILABLE FAULT CURRENT | ACCESSORIES |
|----------------|---------------------------------|-----------|--------|--------------|--------------|-------|---------|-----------|-------------|-------------|---------------|--------------|--------------------|--------------------|---------------|----------------|----------------|--------------------|--------------|---------------|---------------|------|------------------|-------------------|--------------------------|--|-----------|-----------------------------|-------------------------|-------------|
| RTU-28 | PACKAGED ROOFTOP UNIT, GAS HEAT | FOOD HALL | 6485 | CAPTIVE AIR | CASRTU4-150 | 10.8 | 4900 | 11.5 | 1880 | 0 | 32 | 79 | 66 | 152 | 121 | 55 | 55 | 59 | 74 | 80 | 488 | 395 | 2.5 | 14 | NO | RTU-28 - 480V/3PH, 5 HP, 73.5 MCA, 80A OCP | | | | |

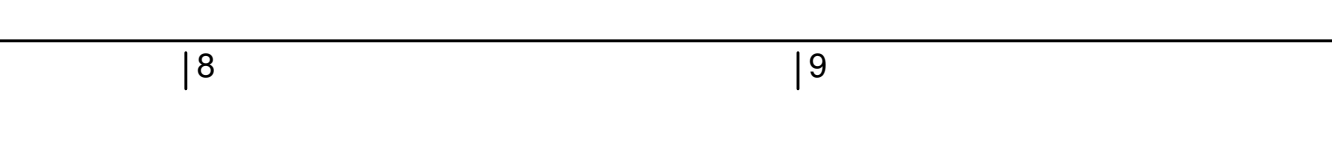
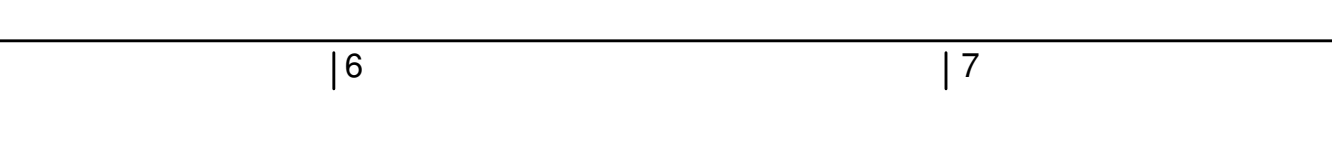
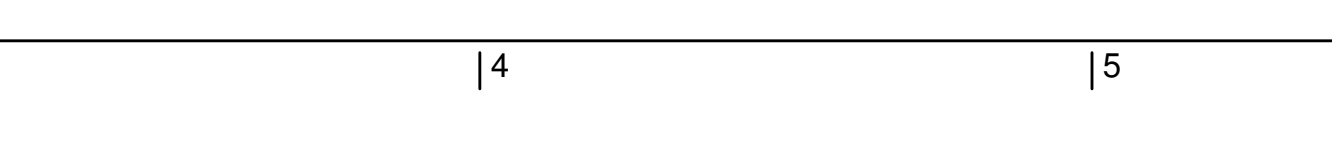
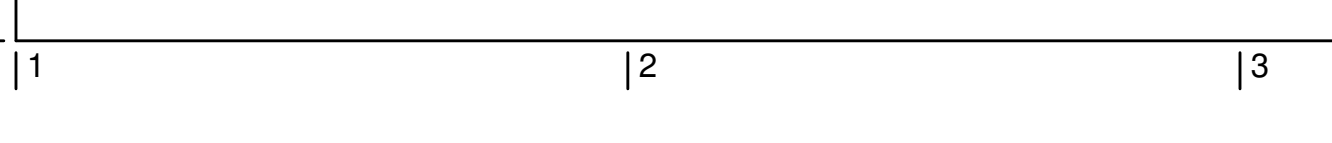
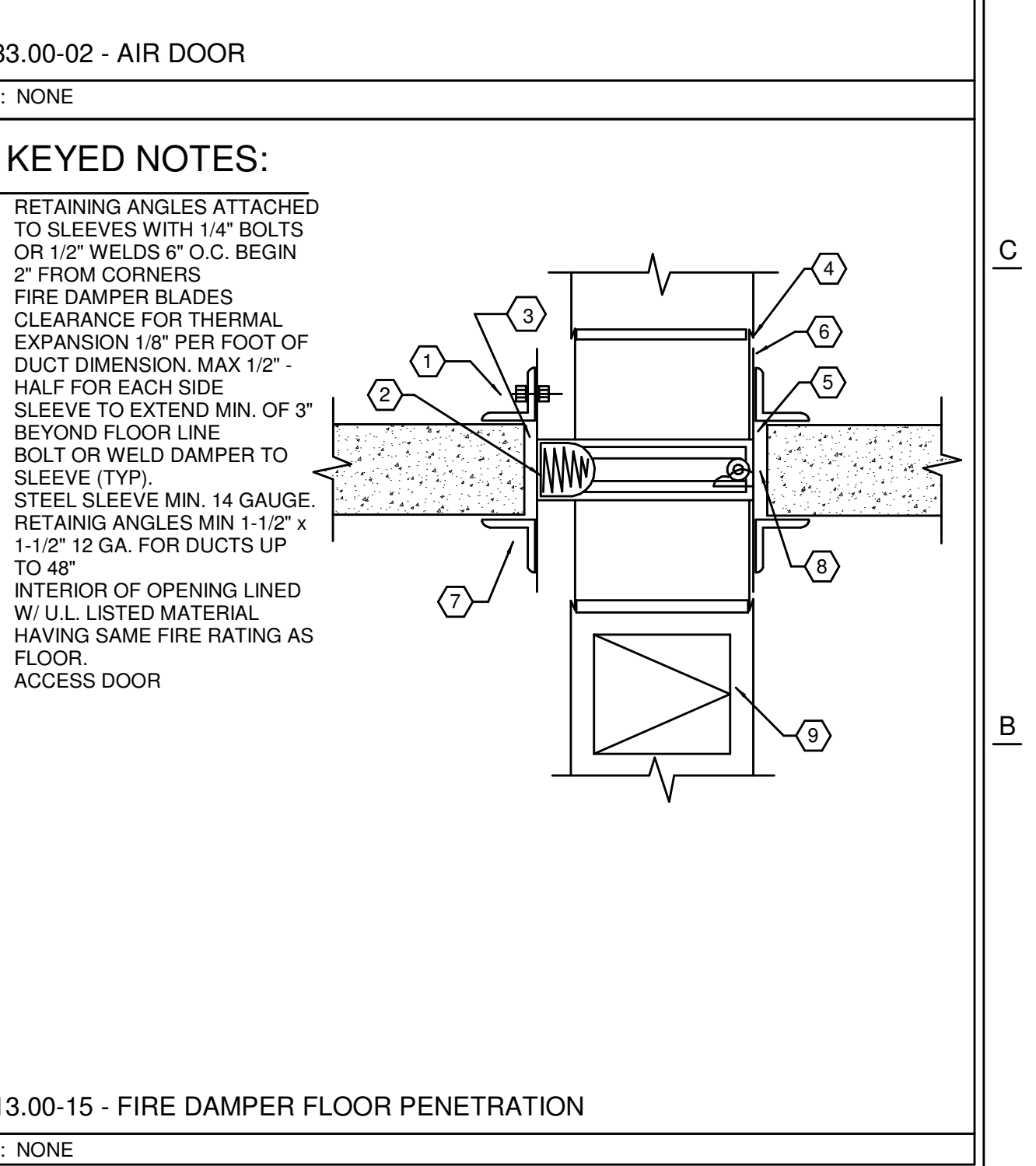
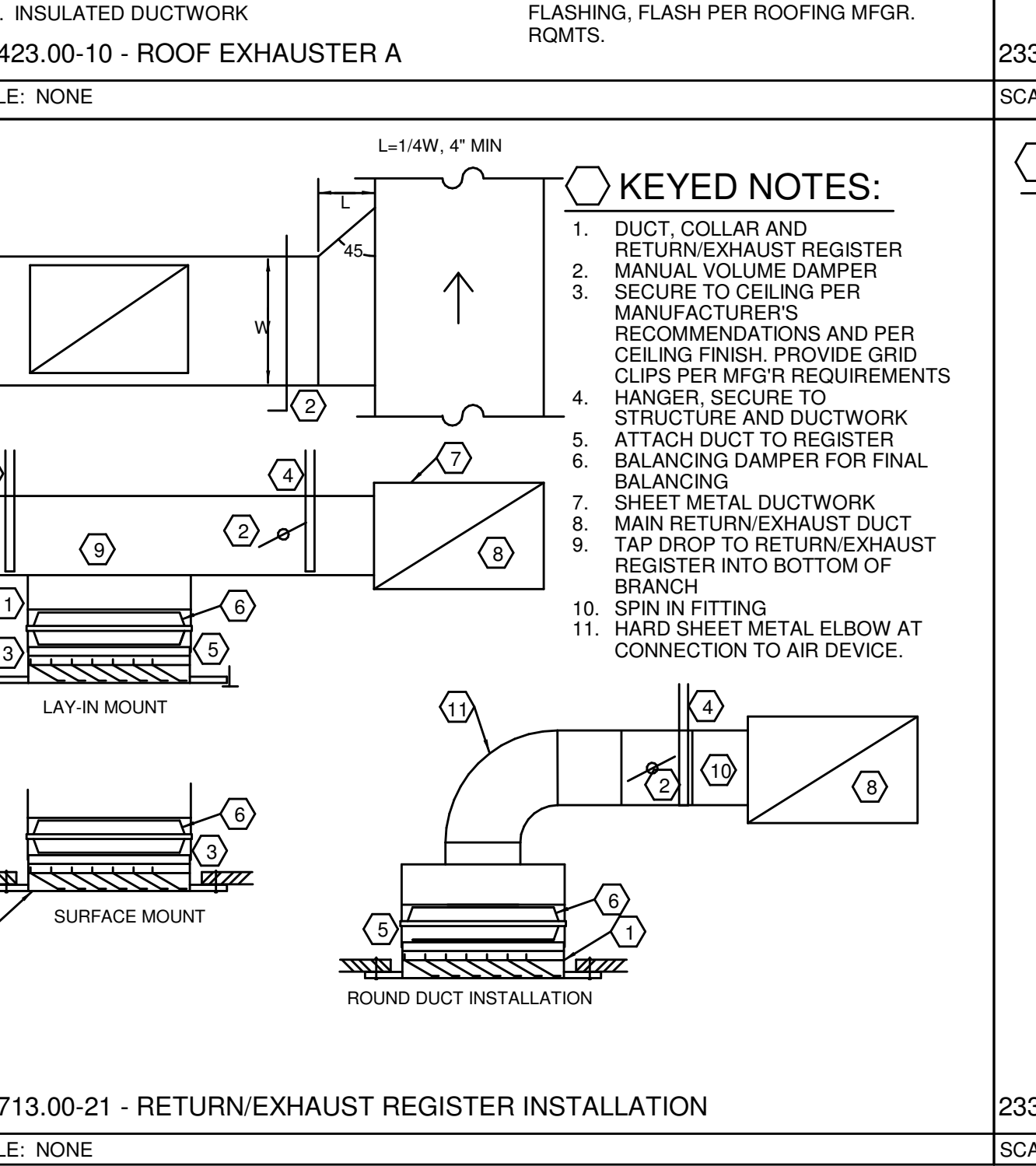
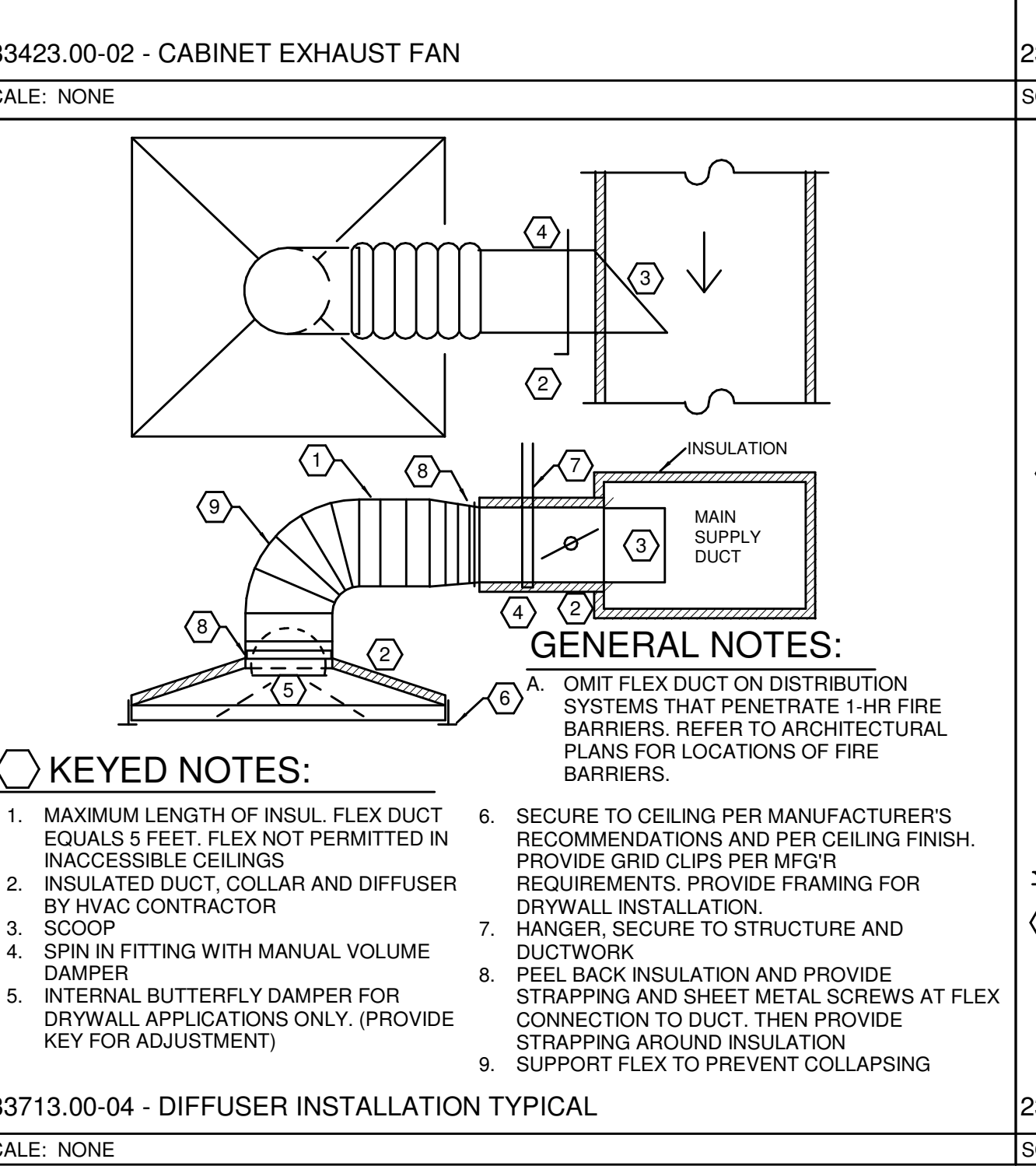
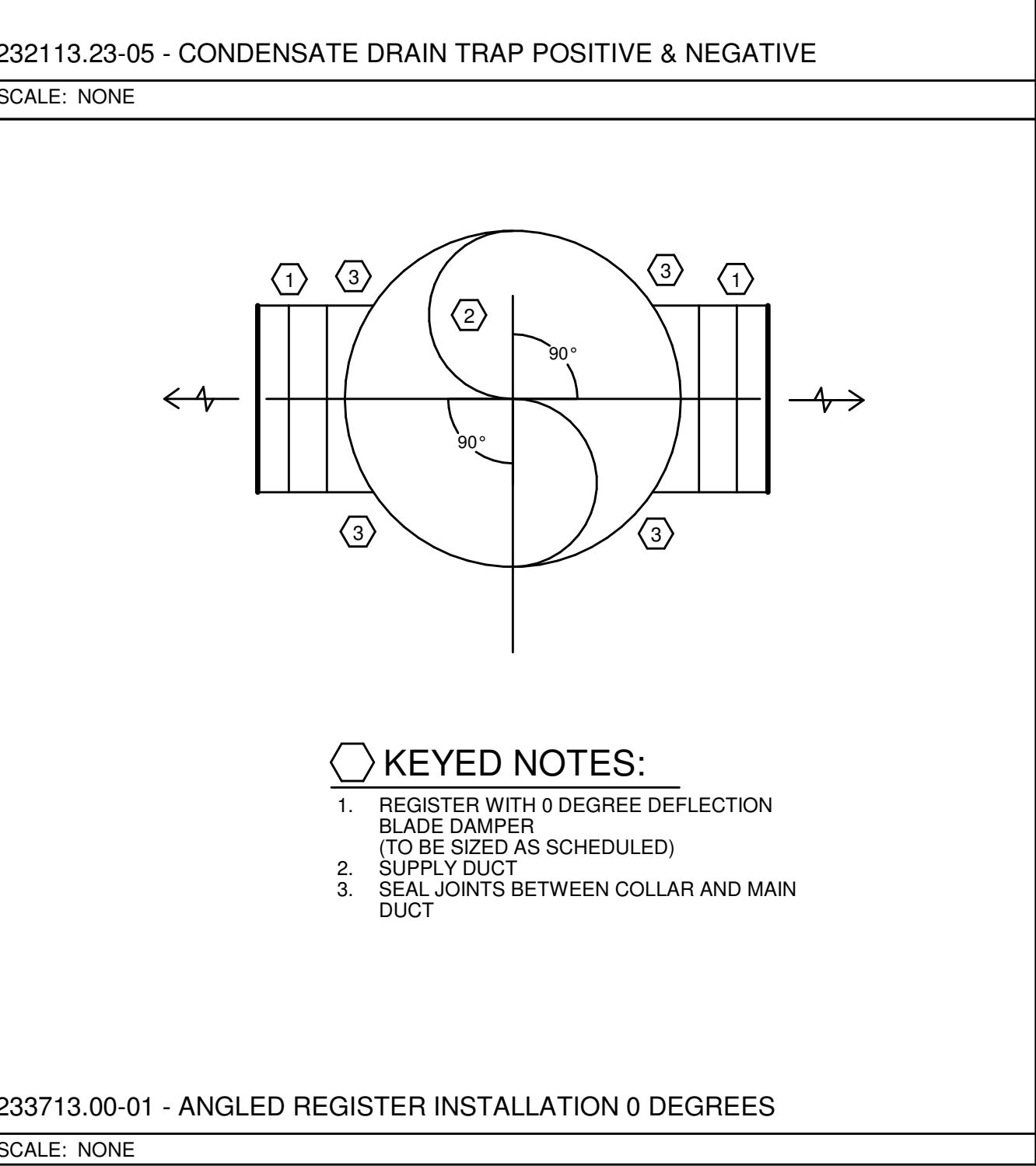
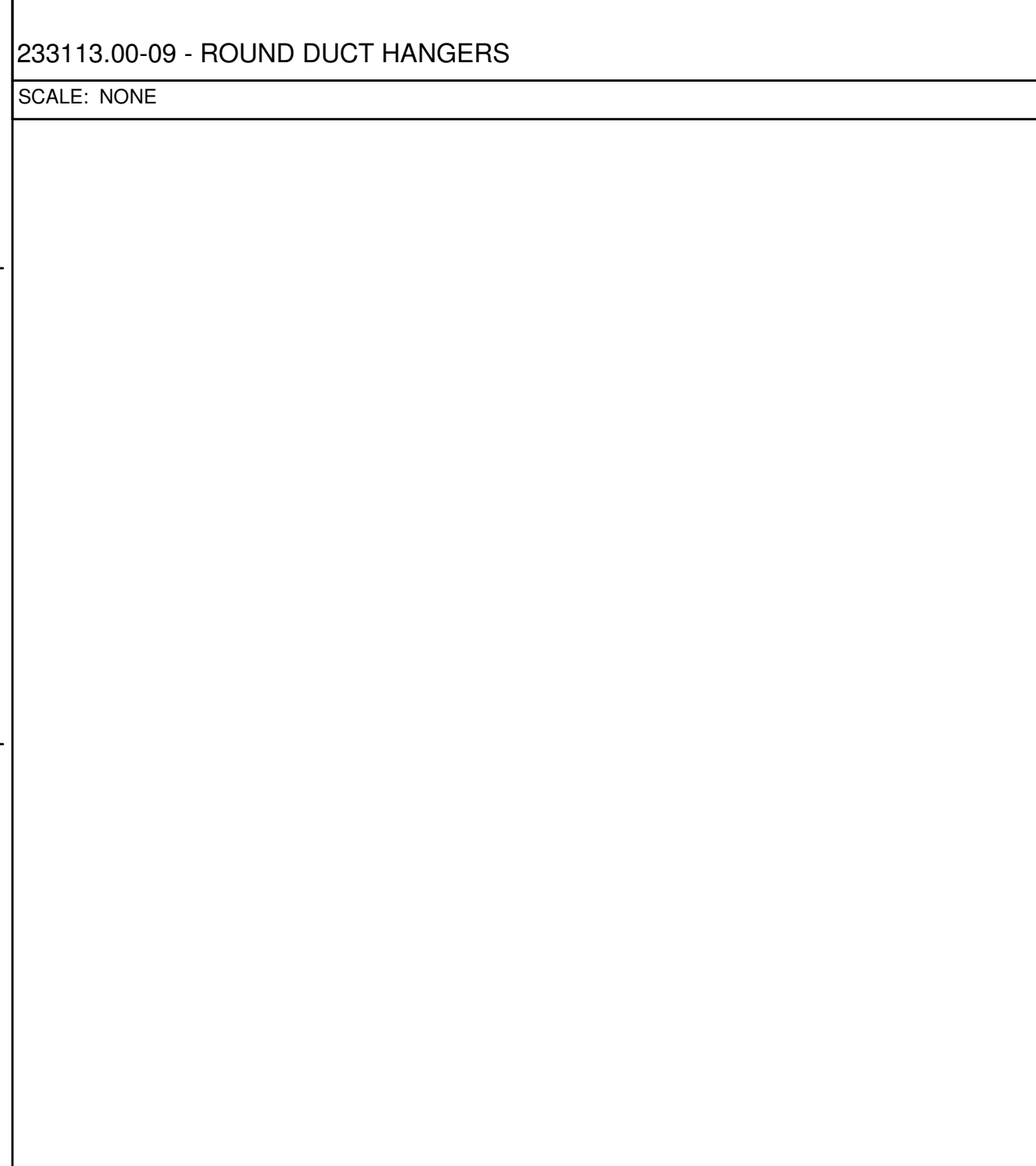
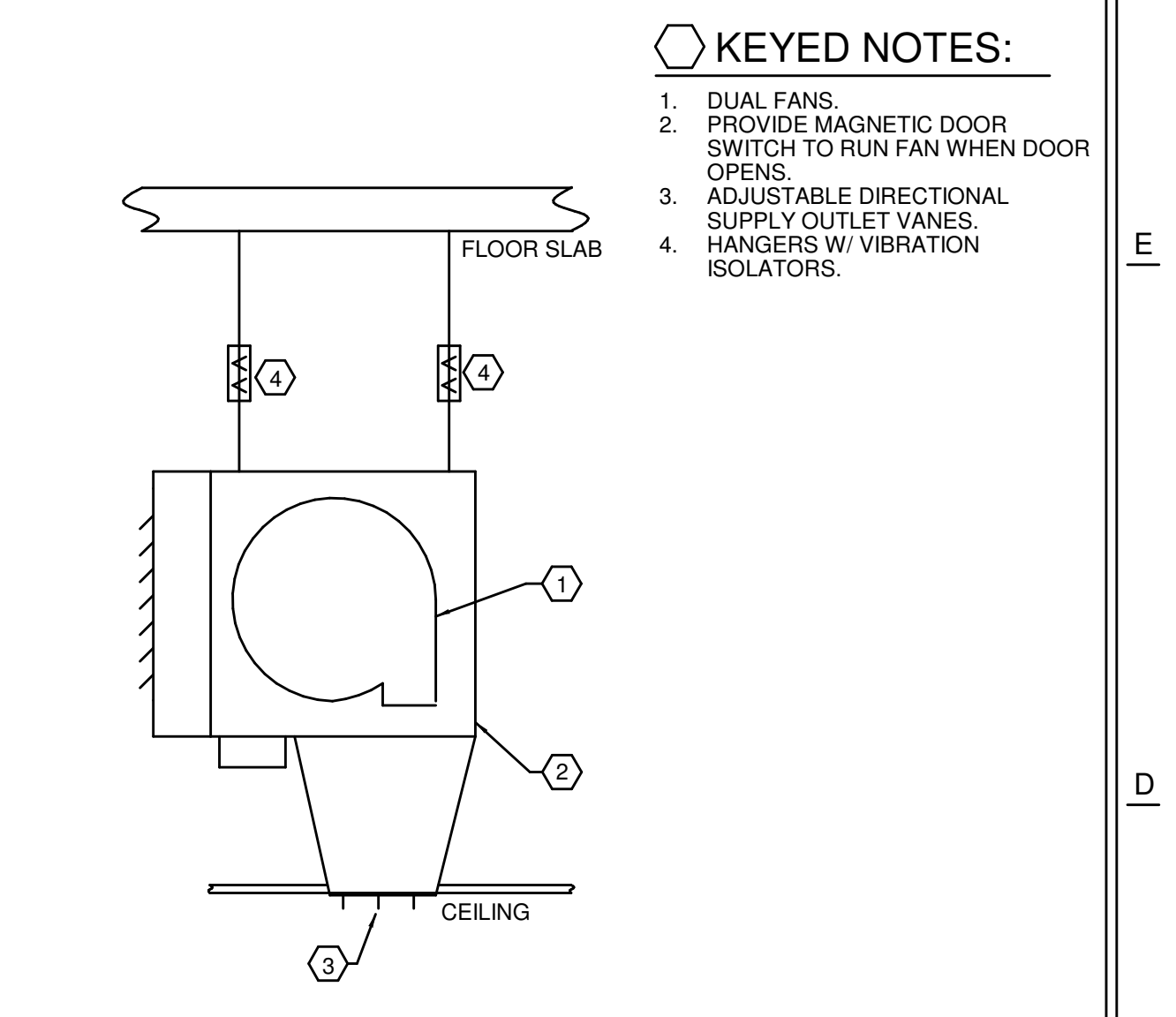
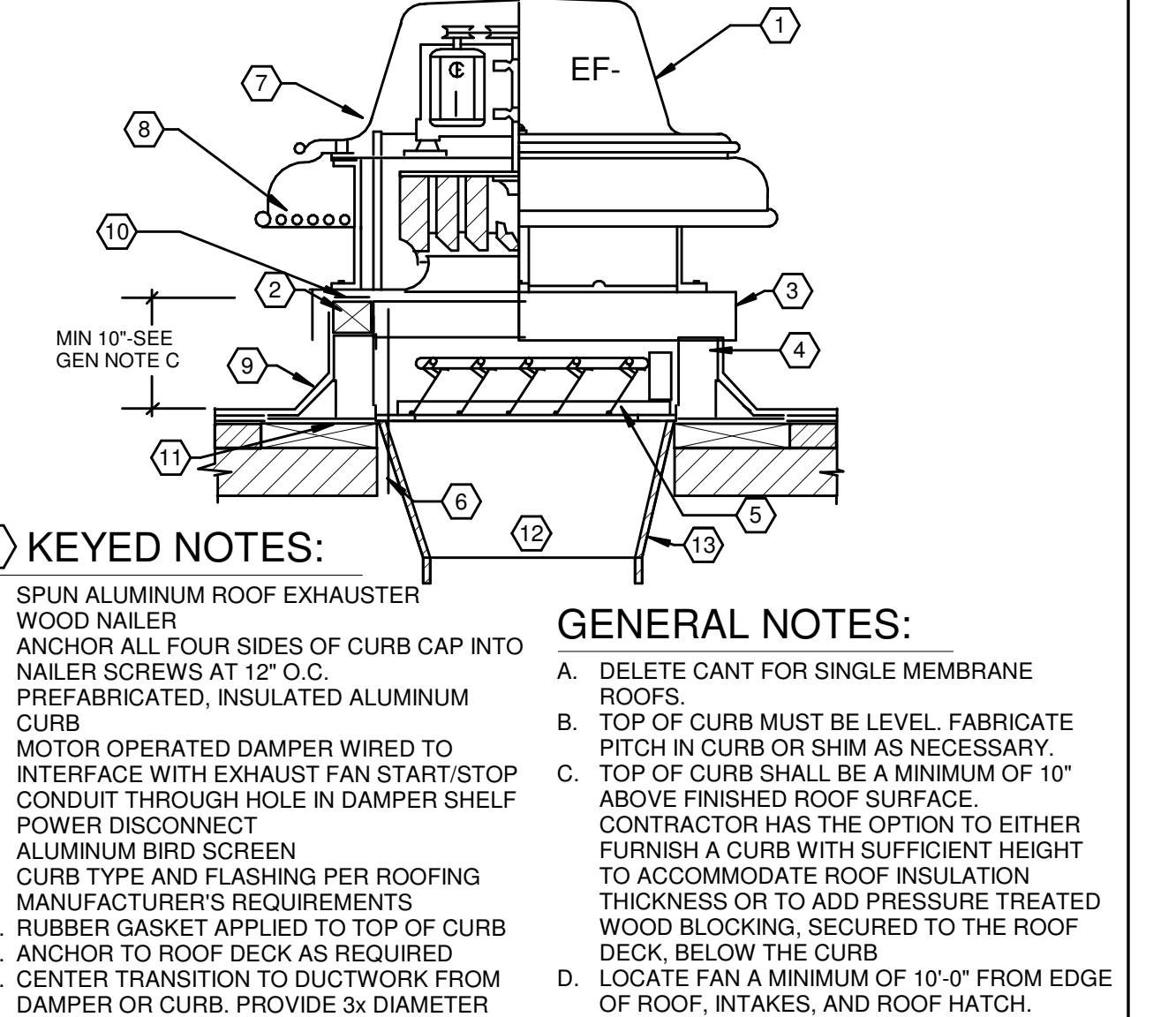
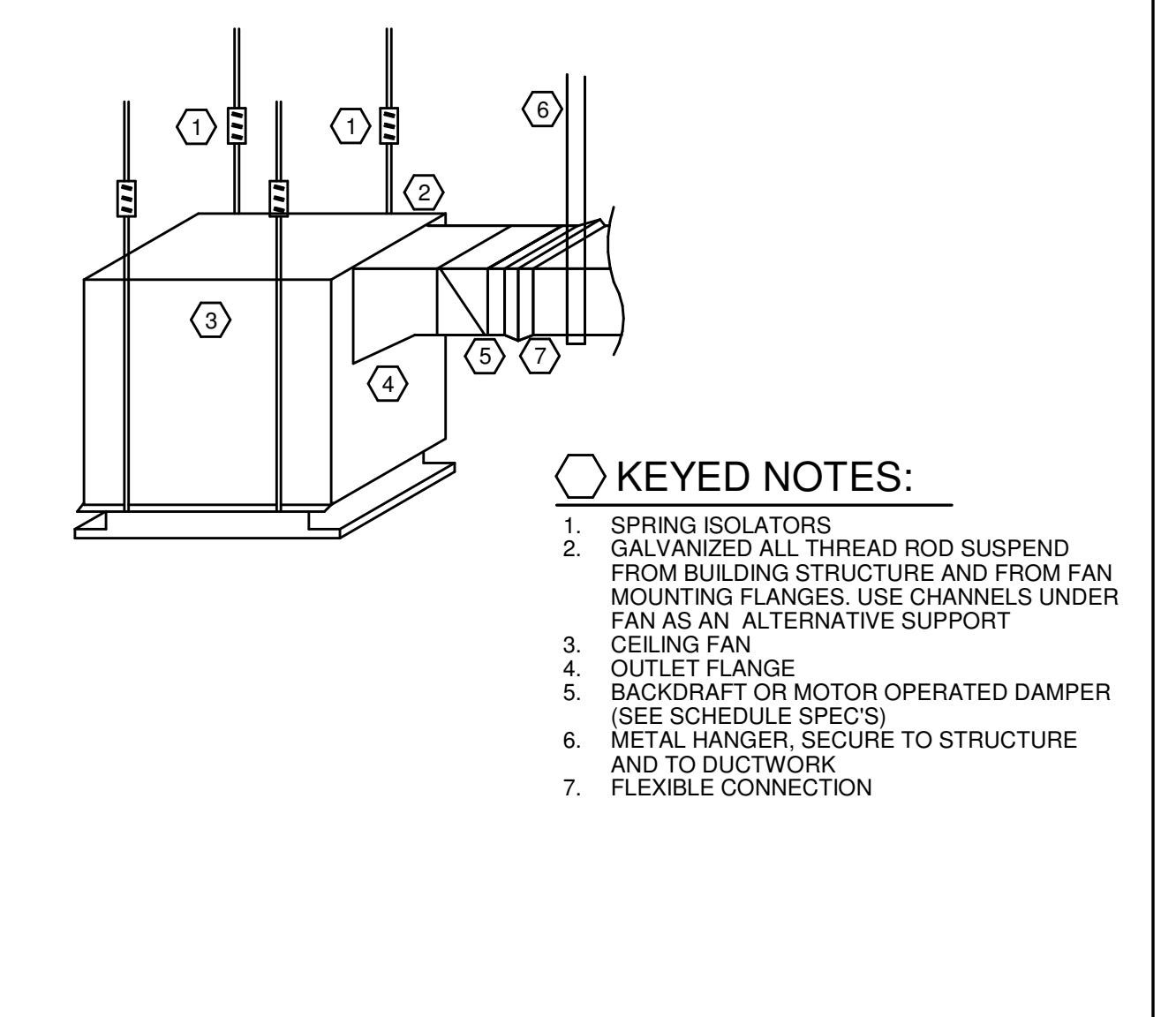
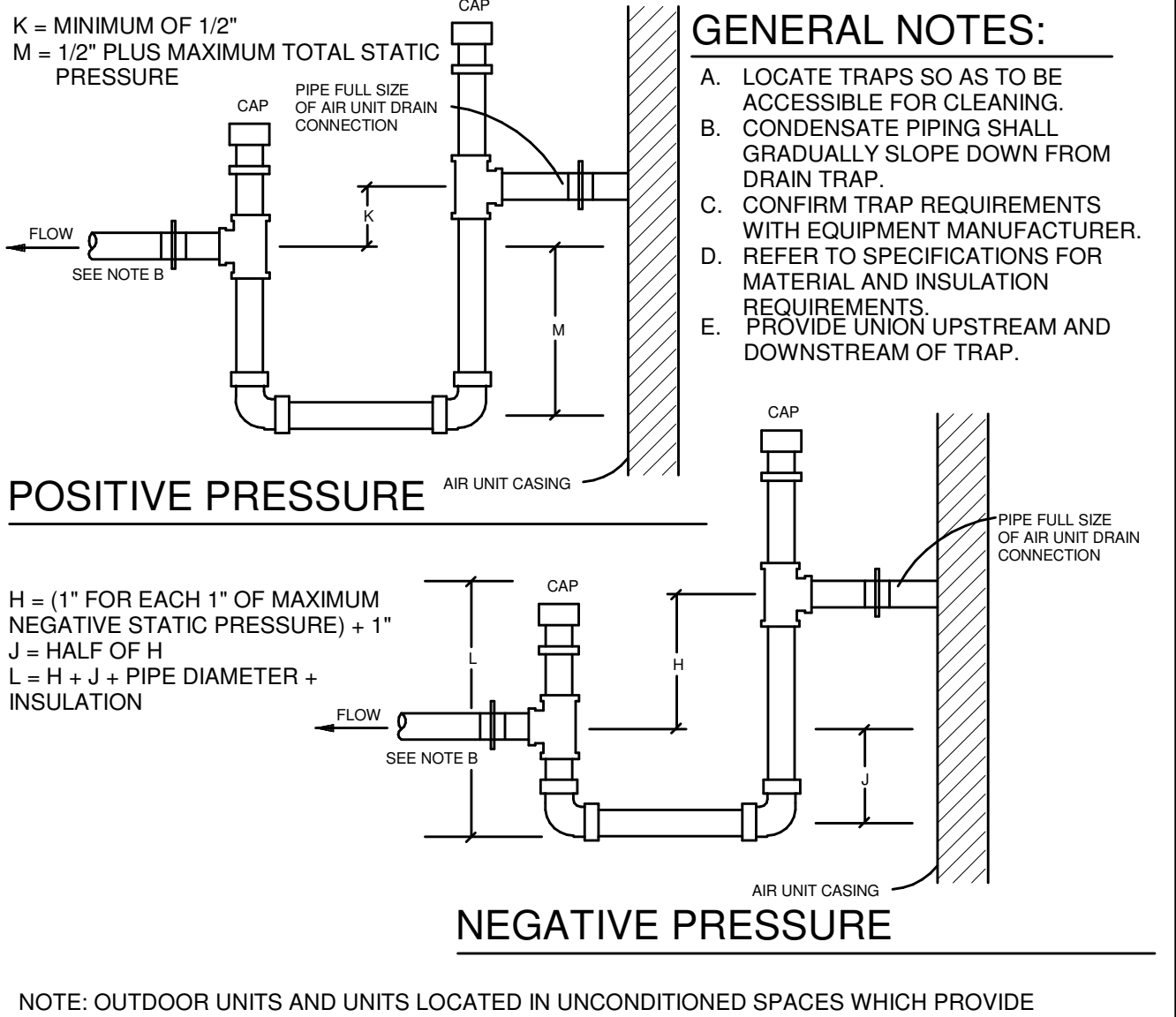
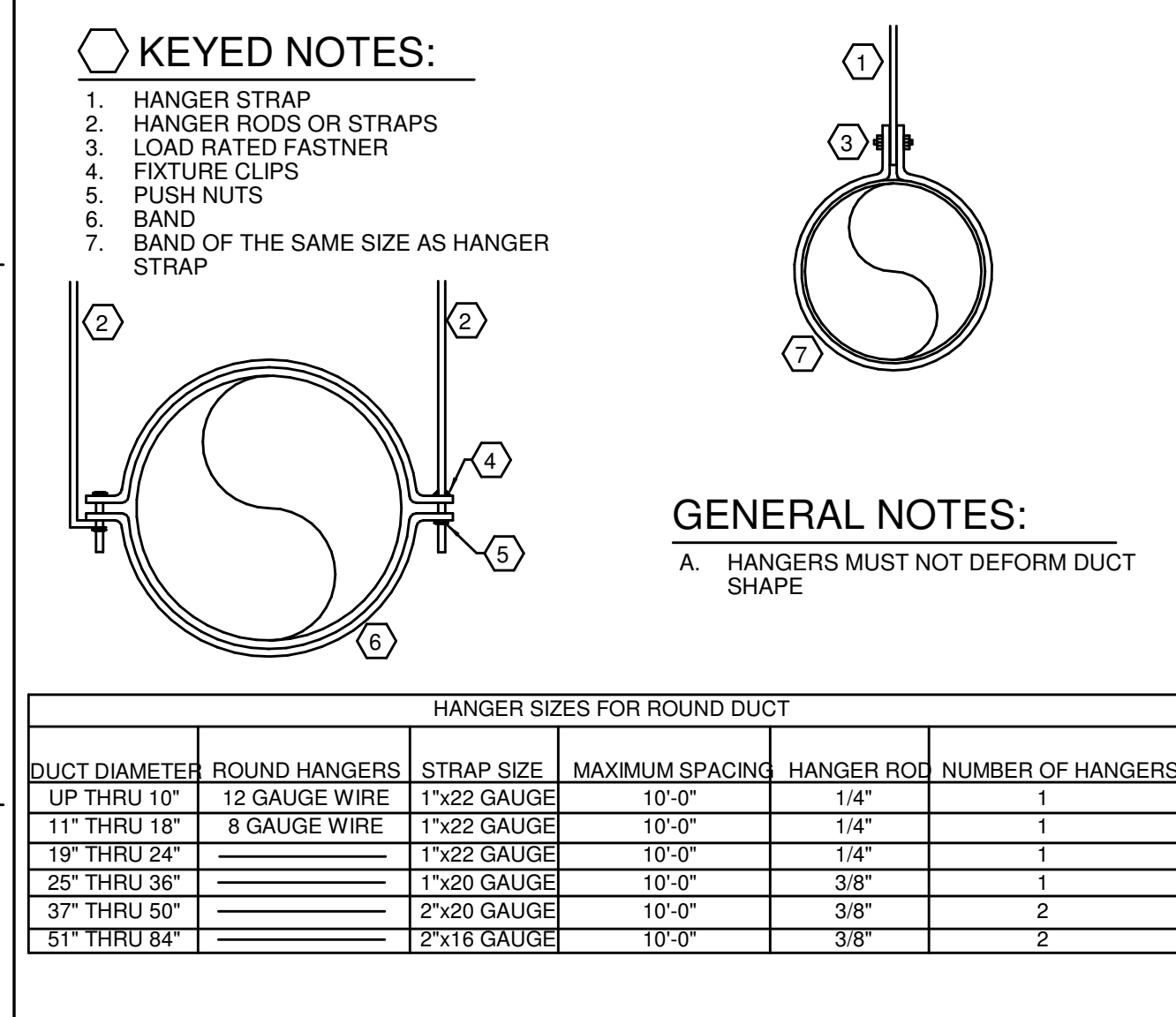
HVAC FANS SCHEDULE

Equipment shall be braced and labeled by the equipment manufacturer to withstand the minimum scheduled available fault current value for listed equipment.

| EQUIPMENT MARK | DESCRIPTION | LOCATION | STATUS | WEIGHT (lbs) | MANUFACTURER | MODEL | CFM (cfm) | ESP (in WC) | FAN RPM (rpm) | BHP (hp) | EMERGENCY | ELECTRIC CONNECTION SUMMARY | AVAILABLE FAULT CURRENT |
|----------------|-------------|------------|--------------|--------------|--------------|----------|-----------|-------------|---------------|----------|-----------|------------------------------------|-------------------------|
| EF-1 | HVAC FAN | ROOF | FOOD HALL 40 | 147 | GREENHECK | GS-95-VG | 500 | 0.35 | 1467 | 0.06 | NO | EF-1A - 120V/1PH, 0.1 HP, 1.5A FLA | |
| EF-2 | HVAC FAN | TRASH ROOM | FOOD HALL 17 | 150 | GREENHECK | SP-A190 | 150 | 0.2 | 1400 | 0 | NO | EF-2A - 120V/1PH, 0.6 W, 0.68A FLA | |

HVAC VENTILATION SCHEDULE

| NUMBER | NAME | AREA | LEVEL | CEILING HEIGHT | AIR CHGS | OA CHGS | PEOPLE RED | OA PER PERSON | OA PER SQ FT | REQ SUP | ACT SUP | REQ OA | ACT OA | ACT RET | ACT EXH | CRIT OA | PRESSURE | PCT OPERABLE | NATURAL VENTILATION |
|---------|------------------------|-----------------|--------------|----------------|----------|---------|------------|---------------|--------------|---------|---------|--------|--------|---------|---------|---------|----------|--------------|---------------------|
| 101 | DINING AREA | 2331 SF | GRAND STAIRS | 11'-9 7/16" | 0 | 0 | 126 | 7.5 | 0.18 | 3130 | 6670 | 1590 | 1668 | 6670 | 0 | 25.6 | Neutral | 0 | False |
| 102 | BAR | 367 SF | GRAND STAIRS | 12'-0" | 0 | 0 | 18 | 7.5 | 0.18 | 1710 | 1710 | 408 | 428 | 1710 | 0 | 14.7 | Neutral | 0 | False |
| 103 | MAIN STREET | 247 SF | GRAND STAIRS | 12'-0" | 0 | 0 | 0 | 0 | 0.06 | 50 | 100 | 24 | 25 | 100 | 0 | 18.5 | Neutral | 0 | False |
| 105 | OFFICE | 48 SF | GRAND STAIRS | 9'-0" | 0 | 0 | 1 | 5 | 0.06 | 95 | 100 | 6 | 20 | 100 | 0 | 9.9 | Neutral | 0 | False |
| 106 | TRASH | 93 SF | GRAND STAIRS | 9'-0" | 0 | 0 | 0 | 0 | 0 | 45 | 50 | 3 | 10 | 50 | 150 | 0 | Negative | 0 | False |
| 107 | EGRESS CORRIDOR | 103 SF | GRAND STAIRS | 9'-0" | 0 | 0 | 0 | 0 | 0.06 | 30 | 30 | 2 | 6 | 30 | 0 | 25.7 | Neutral | 0 | False |
| 108 | LL CORRIDOR | 165 SF | GRAND STAIRS | 12'-0" | 0 | 0 | 0 | 0 | 0.06 | 400 | 400 | 25 | 80 | 400 | 0 | 3.1 | Neutral | 0 | False |
| 109 | DRW WASH | 392 SF | GRAND STAIRS | 9'-0" | 0 | 0 | 1 | 0 | 0 | 355 | 355 | 22 | 71 | 355 | 0 | 0 | Neutral | 0 | False |
| 110 | PREP KITCHEN & STORAGE | 407 SF | GRAND STAIRS | 9'-0 3/32" | 0 | 0 | 4 | 7.5 | 0.12 | 170 | 170 | 10 | 34 | 170 | 0 | 57.9 | Neutral | 0 | False |
| 111 | KITCHEN CORRIDOR | 89 SF | GRAND STAIRS | 9'-0" | 0 | 0 | 0 | 0 | 0.06 | 15 | 15 | 1 | 3 | 10 | 0 | 34.4 | Positive | 0 | False |
| 112 | MEN'S RESTROOM | 160 SF | GRAND STAIRS | 9'-0" | 0 | 0 | 0 | 0 | 0 | 30 | 100 | 6 | 20 | 0 | 250 | 0 | Negative | 0 | False |
| 112 (1) | LL CLOSET | 22 SF | GRAND STAIRS | 12'-0" | 0 | 0 | 0 | 0 | 0.06 | 0 | 0 | 0 | 0 | 0 | 0 | 0 | Neutral | 0 | False |
| 113 | WOMEN'S RESTROOM | 203 SF | GRAND STAIRS | 9'-0" | 0 | 0 | 0 | 0 | 0 | 35 | 100 | 6 | 20 | 0 | 250 | 0 | Negative | 0 | False |
| 115 | KITCHEN | 303 SF | GRAND STAIRS | 9'-0" | 0 | 0 | 4 | 0 | 0 | 790 | 895 | 55 | 179 | 800 | 0 | 0 | Positive | 0 | False |
| 116 | KITCHEN | 304 SF | GRAND STAIRS | 9'-0" | 0 | 0 | 4 | 0 | 0 | 790 | 895 | 55 | 179 | 800 | 0 | 0 | Positive | 0 | False |
| 117 | KITCHEN | 304 SF | GRAND STAIRS | 9'-0" | 0 | 0 | 4 | 0 | 0 | 790 | 895 | 55 | 179 | 800 | 0 | 0 | Positive | 0 | False |
| 118 | KITCHEN | 304 SF | GRAND STAIRS | 9'-0" | 0 | 0 | 4 | 0 | 0 | 790 | 895 | 55 | 179 | 800 | 0 | 0 | Positive | 0 | False |
| G-121 | ENTRY | Redundant Space | GRAND STAIRS | 9'-0" | 0 | 0 | 4 | 0 | 0 | 790 | 895 | 55 | 179 | 800 | 0 | 0 | Positive | 0 | False |
| TOTAL | | 5824 SF | | | | | 0 | | | | | | | | | | | | |



PROJECT

NEWPORT ON THE LEVEE EXCHANGE BUILDING GALLEY ON THE LEVEE

CLIENT

212 East 3rd Street
Suite 300
Cincinnati, OH 45202
T 513.721.2744
F 513.721.0332

ARCHITECT

reztalk

Reztalk Architecture PC, Inc.
601 Main Street
Suite 200
Cincinnati, OH 45202
T 513.233.3333
F 513.233.3434

CONSULTANTS

MEP
KLH Engineers

STRUCTURAL
Thomson Baker + Associates
1538 Alexandria Pike
2056 Reading Road
Suite 450
Cincinnati, OH 45202
T 859.442.8050

ISSUED: PERMIT | 01/27/2023

| REVISION | DATE | DESCRIPTION |
|----------|---------|-------------|
| 1 | 5.15.23 | REVISION 1 |

PROJECT ADDRESS: 1 LEVEE WAY NEWPORT, KY 41071

PROJ. NO: 22029

DRAWN BY: DRS

CHECKED BY: RAL

FILE NAME: 22052_NOTL-Food Hall_A20

COPYRIGHT: Reztalk Architecture PC, Inc.

SHEET SIZE: 30" x 42"

SHEET TITLE & NUMBER

MECHANICAL SCHEDULES AND DETAILS

M601.2B

KLH PROJ #: 24522

5/11/2023 5:11:38 PM