

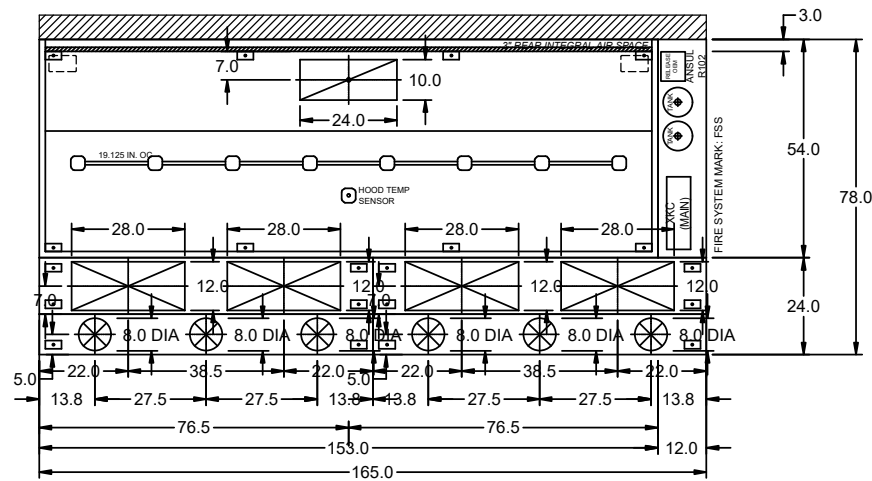
HOOD INFORMATION																	
HOOD NO.	MARK	MODEL	HOOD DIMENSIONS (IN.)			HOOD CONSTR.	COOKING LOAD / DUTY RATING	EXHAUST					SUPPLY		HANGING WEIGHT LBS.	SECTION LOCATION	
			LENGTH	WIDTH	HEIGHT			TOTAL CFM	COLLAR(S)			MUA CFM	AC CFM				
1	HOOD-1	XXEW-153-S	153	54	24	430 SS WHERE EXPOSED	HEAVY	2550	10	24		2550	0.483	1300	700	743	SINGLE

HOOD INFORMATION																
HOOD NO.	MARK	LIGHTING DETAILS				GREASE FILTRATION DETAILS				UTILITY CABINET(S)						
		FIXTURE TYPE BULB / LAMP INFO		QTY	FOOT CANDLES	TYPE / MODEL MATERIAL	QTY	SIZE (IN.) L H	LOCATION	FIRE SYSTEM		CONTROLS				
1	HOOD-1	INCANDESCENT (GLOBE) 100W A19 (BULBS NOT INCL.)		8	54.77	X-TRACTOR (SPARK ARRESTOR INCL.) STAINLESS STEEL	2	16	20	RIGHT	ANSUL R102		6	XKC	MB TOUCHSCREEN	

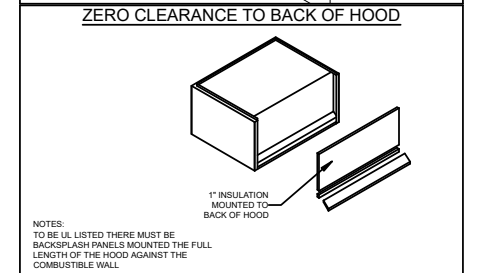
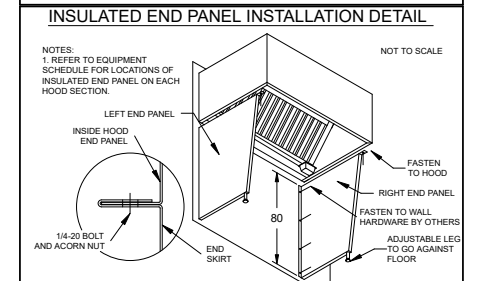
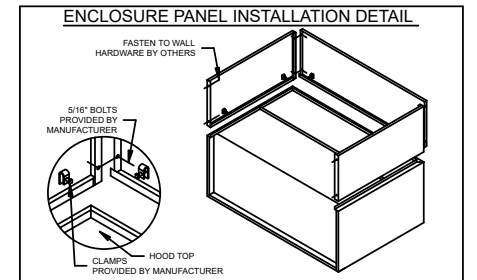
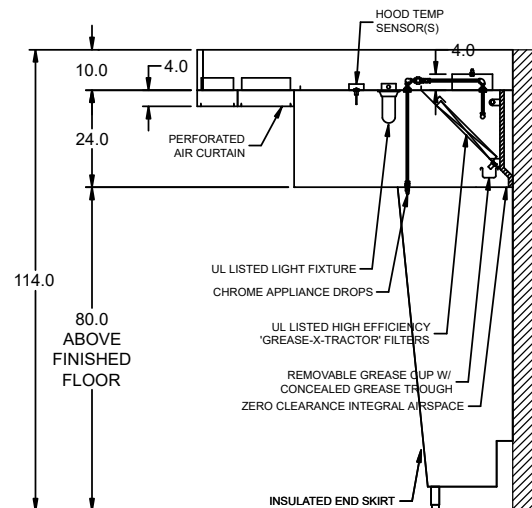
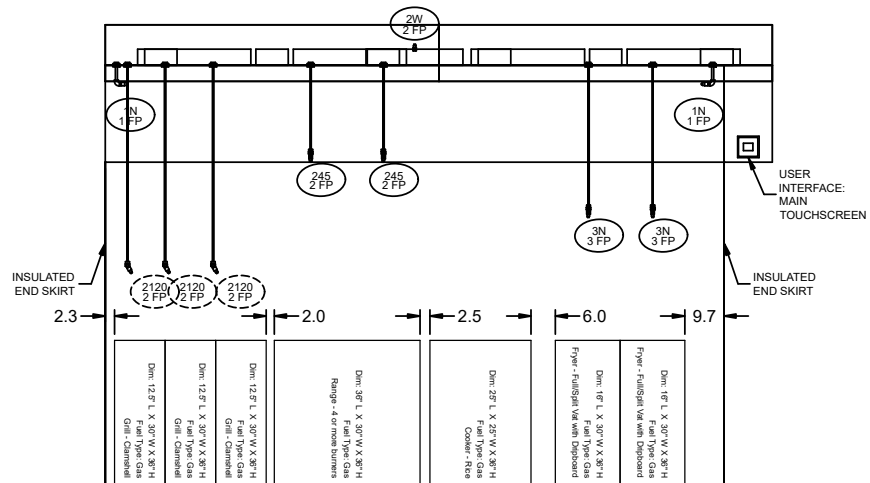
SUPPLY PLENUM INFORMATION																		
HOOD NO.	MARK	POS.	TYPE	SIZE (IN.)			INSULATED	DAMPER(S)	LED LIGHT(S)		TOTAL CFM	TOTAL S.P.	COLLARS					
				L	W	H			SUPPLIED	QTY			TYPE	MOUNTING	QTY	W	L	DIA.
1	HOOD-1	FRONT	SPLIT ASF	82.5	14	4	NO	NO		650	0	MUA	FACTORY	2	12	28	325	139
				82.5	10	4	YES	YES		350	0.02	AC	FACTORY	3			117	335
1	HOOD-1	FRONT	SPLIT ASF	82.5	14	4	NO	NO		650	0	MUA	FACTORY	2	12	28	325	139
				82.5	10	4	YES	YES		350	0.02	AC	FACTORY	3			117	335

HOOD OPTIONS

UL 710 LISTED W/ OUT EXHAUST FIRE DAMPER - UL #R25625
 BACK INTEGRAL AIR SPACE - 3 IN WIDE - ZERO CLEARANCE
 10 IN HIGH CEILING ENCLOSURES - FRONT LEFT RIGHT - FIELD INSTALLED
 FACTORY MOUNTED EXHAUST COLLAR(S)
 LEFT INSULD END PNL W/ ADJ LEG 80 IN HIGH 27.00 IN TOP WIDTH 21.0 IN BOTTOM WIDTH
 RIGHT INSULD END PNL W/ ADJ LEG 80 IN HIGH 27.00 IN TOP WIDTH 21.0 IN BOTTOM WIDTH
 PERFORMANCE ENHANCING LIP (PEL) TECHNOLOGY
 STANDING SEAM CONSTRUCTION FOR SUPERIOR STRENGTH



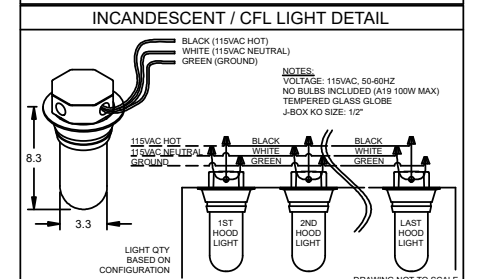
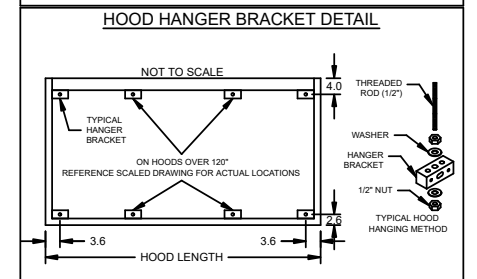
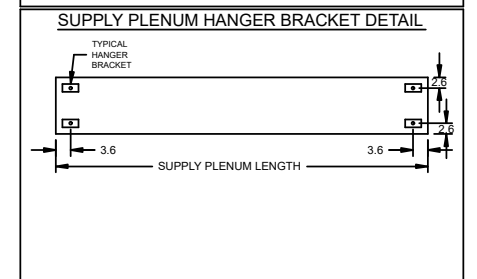
FIRE (PIPING/DROPS/NOZZLES/ETC.)
 SUBJECT TO CHANGE. AS-BUILT
 DRAWINGS CAN BE PROVIDED AT
 TIME OF ORDER AND INCLUDED
 WITH PRODUCT SHIPMENT



HOOD HANGING HEIGHT FOR FIRE SYSTEMS
 VERIFICATION OF HOOD HANGING HEIGHT ABOVE FINISHED FLOOR (A.F.F.) IS REQUIRED FOR CORRECT PLACEMENT OF FIRE SYSTEM NOZZLES.

RECOMMENDED HANGING HEIGHT = 80" FROM FINISHED FLOOR TO LOWER FRONT EDGE OF HOOD.

OTHER HANGING HEIGHT = * FROM FINISHED FLOOR TO LOWER EDGE OF HOOD.



National Engineering, Ltd
 4635 Trueman Blvd, Suite 250
 Hilliard, OH 43026
 (614) 751-9610



Approved
 Approved as Noted
 Revise and Resubmit
 Rejected

BY **AJJ** DATE **9/12/2025**
 SUBMITTAL# **3** SPEC **EFs, HD, MA**

Approval is only for general conformance with the design concept and the information given in the Construction Documents. Corrections or comments made on the shop drawings during this review do not relieve the contractor from compliance with the requirements of the plans and specifications. Review of a specific item shall not include review of an assembly of which the item is a component. The Contractor is responsible for: dimensions to be confirmed and correlated at the jobsite; information that pertains solely to the fabrication processes or to the means, methods, techniques, sequences and procedures of construction; coordination of the Work with that of all other trades and performing all work in a safe and satisfactory manner.

DIRECT CHAIN ACX
 JOE AYOUB
 JOE.AYOUB@ACCUREX.COM
 (857)272-8727

ACCUREX

PROJECT: 9/10/2025
 MARK: HOOD-1



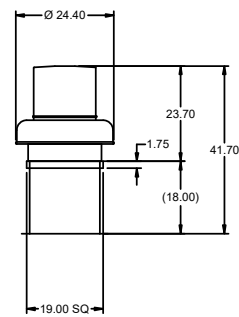
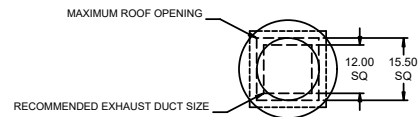
UL LISTED

Direct Drive Centrifugal Roof Exhaust Fan

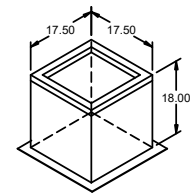
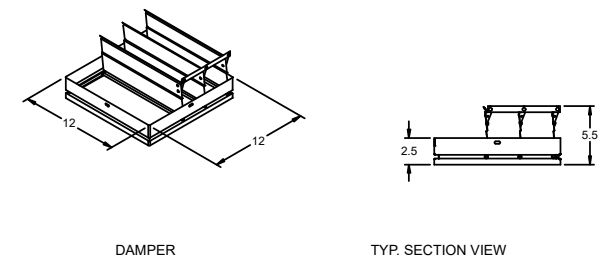
MARK INFORMATION		FAN INFORMATION									SOUND INFORMATION				MOTOR INFORMATION									
MARK	QTY	MODEL	DRIVE TYPE	VOLUME (CFM)	EXTERNAL SP (IN. WG)	TOTAL EXTERNAL SP (IN. WG)	FAN SPEED (RPM)	OUTLET VELOCITY (FT/MIN)	FEI	TOTAL WEIGHT (LB)	INLET dBA	INLET SONES	INLET SONES (SPHERICAL)	OUTLET dBA	OUTLET SONES	OPERATING POWER (HP)	MOTOR SIZE (HP)	FEP INPUT POWER (KW)	ENCLOSURE	VOLTAGE	CYCLE	PHASE	EC MOTOR	NEC FLA*
EF-2 (Restroom)	1	XRED-097-VG	Direct	150	0.6	0.6	1,330	156.25	0	43.2	51.87	6.22	0	0	0	0.05	0.25	0	TN	115	60	1	VariGreen	5.8

*NEC FLA - Based on table 430.250 or 430.248 of National Electrical Code 2020. Actual motor FLA may vary for sizing thermal overload, consult factory"

EF-2 (Restroom) : SELECTED OPTIONS AND ACCESSORIES
Curb Cap Size - 19 Square UL/cUL 705 Listed - "Power Ventilators" Switch, NEMA-1, Toggle, Damper Shipped Loose, BD-100-PB-12X12, Gravity Operated, Not Coated, Nominal Size Birdscreen: Galvanized, nom. 84% Free Area Conduit Chase Qty 1

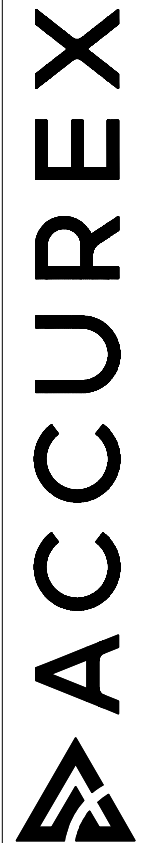


DUCT DIMENSIONS ARE LARGEST POSSIBLE DUCT TO FIT THROUGH CURB.
 CONSULT SYSTEM DESIGN ENGINEER FOR RECOMMENDED DUCT SIZE.
 OVERALL HEIGHT MAY BE GREATER DEPENDING ON MOTOR, ADAPTER, AND/OR
 HINGE BASE.

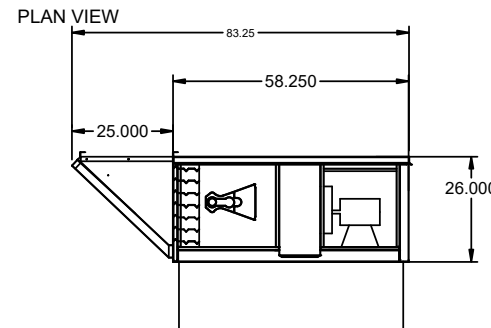
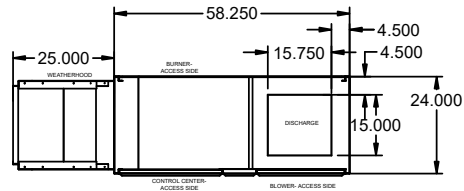


PROJECT
 9/10/2025
 MARK
 5723
 CHIPOTLE-NORMAN SOUTH, OK
 EF-2 (RESTROOM)

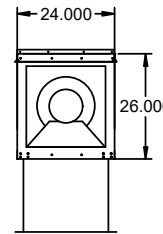
DIRECT CHAIN ACX
 JOE AYOUB
 JOE.AYOUB@ACCUREX.COM
 (857)272-8727



EQUIPMENT SCHEDULE										OPTIONS AND ACCESSORIES									
Tempered Make-Up Air Unit										Make Up Air									
Mark: MAU-1										Air Flow Arrangement: Outdoor Air Only									
Qty	Accurex Model	Volume	External SP	Total SP	MCA	MOP	Weight	SCCR		Weatherhood: Aluminum Mesh, 16x20x2 - (2)									
1	XDGX-P115-H05-VG	1,300 CFM	0.5 in. wg	1,446 in. wg	11.7	20	421 lb	5kA		Dampers: Inlet									
Outdoor Air Intake Position: End										Discharge Position: Bottom									
Coating: Galvanized										Insulation: Double Wall - Tempering On									
Supply Fan Control: Vari-Green ECM										Vari-Green Control: Dial on Motor									
Access Side: Right-Hand										Unit Weight: 421 lb									
Control Center										Freeze Protection									
Heat Inlet Air Sensor										Unit Controls: Microprocessor									
Temperature Control: Discharge										BMS Protocol: None									
Direct Gas Options/Accessories										Approvals: ETL									
FM Compliant																			



ELEVATION VIEW



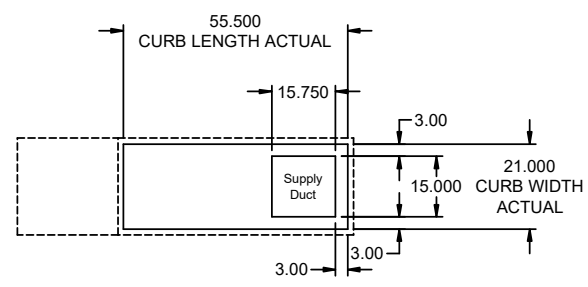
END VIEW

NOTE: Roof Opening Requirements:

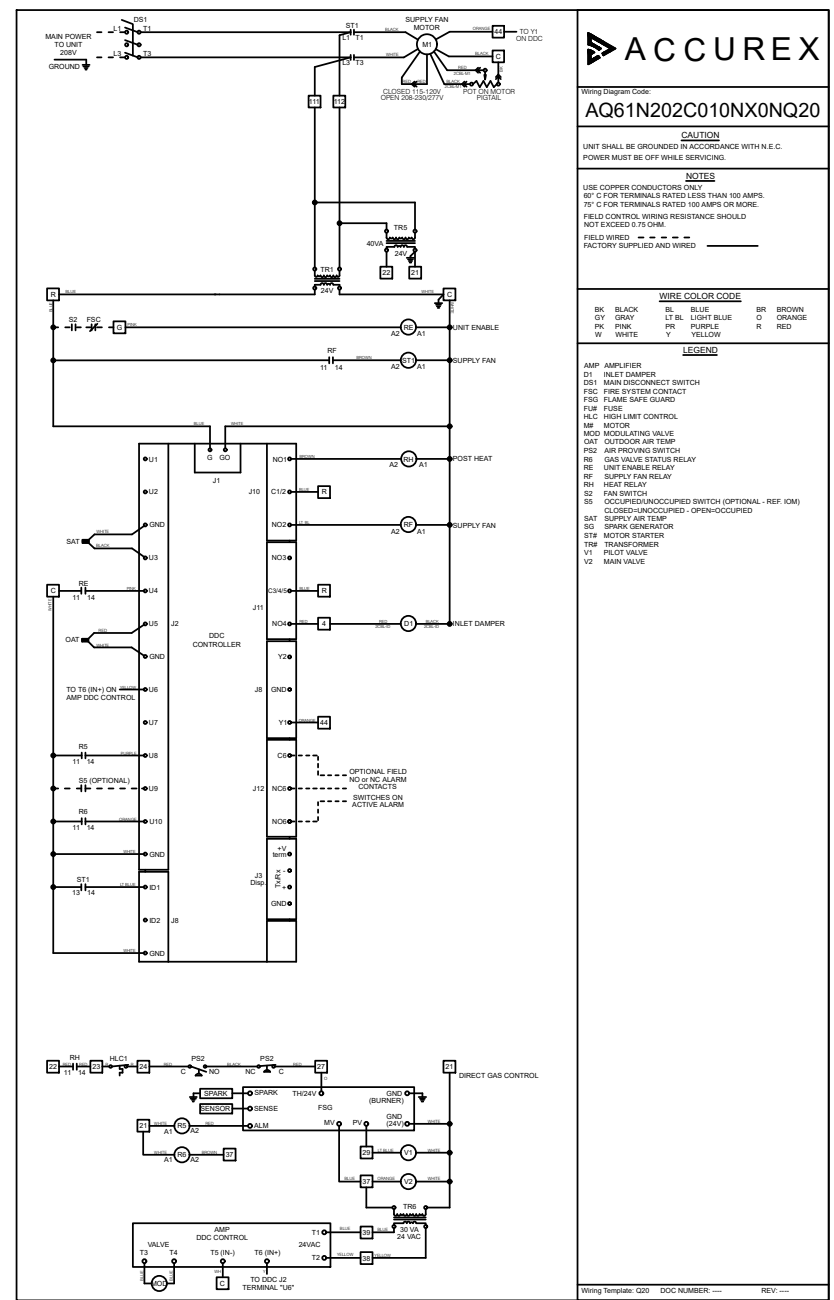
Minimum Roof Opening: The minimum roof opening size is the illustrated duct diameter plus 0.25 in. on all sides. For example: If the duct size is 14 x 14 in. square, the minimum roof opening size is 14.5 x 14.5 in. square.

Maximum Roof Opening: There must be a minimum perimeter of 1.75 in. between the roof opening and the roof curb. For example: If the roof curb is 75 x 30 in. square, the maximum roof opening is 71.5 x 26.5 in. inches square.

NOTE: The weatherhood and filter sections of the make-up air unit are not supported by the curb. This is by design, in order to help alleviate water infiltration issues. MUA Unit supports are shipped loose with unit.



FOOTPRINT



ACCUREX

Wiring Diagram Code:
AQ61N202C010N10X0N20

CAUTION
UNIT SHALL BE GROUNDED IN ACCORDANCE WITH N.E.C. POWER MUST BE OFF WHILE SERVICING.

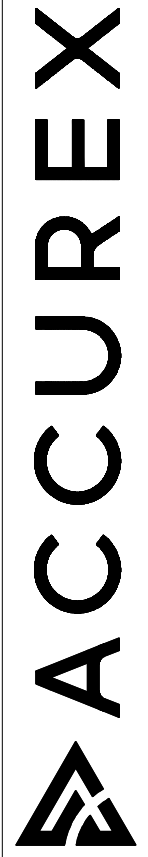
NOTES
USE COPPER CONDUCTORS ONLY
95° C FOR TERMINALS RATED LESS THAN 100 AMPS.
95° C FOR TERMINALS RATED 100 AMPS OR MORE.
FIELD CONTROL WIRING RESISTANCE SHOULD NOT EXCEED 0.75 OHM.
FIELD WIRES: ————
FACTORY SUPPLIED AND WIRED: _____

WIRE COLOR CODE
BK BLACK BL BLUE BR BROWN
GY GRAY LT BL LIGHT BLUE O ORANGE
PK PINK PS PURPLE R RED
W WHITE Y YELLOW

LEGEND
AMP AMP LIFIER
DI INLET DAMPER
DSI MAIN DISCONNECT SWITCH
FSC FIRE SYSTEM CONTACT
FSG FLAME SENSE GUARD
FUF FUSE
HLC HIGH LIMIT CONTROL
MM MOTOR
MOD MODULATING VALVE
OAT OUTDOOR AIR TEMP
PSC AIR PROVING SWITCH
RE GAS VALVE STATUS RELAY
RF INLET ENABLE RELAY
RF SUPPLY FAN RELAY
RH HEAT RELAY
RS FAN SWITCH
SS OCCUPIED/UNOCCUPIED SWITCH (OPTIONAL - REF. ICM)
SAT SUPPLY AIR TEMP
SC CLOSED-UNOCCUPIED - OPEN-OCCUPIED
SG SPARK GENERATOR
SIB MOTOR SPARKER
STB TRANSFORMER
TV FLOT VALVE
VZ MAIN VALVE

PROJECT: 9/10/2025
MARK: MAU-1

DIRECT CHAIN ACX
JOE AYUB
JOE.AYUB@ACCUREX.COM
(857)272-8727



CONTROL INFORMATION

MARK	MAIN ELECTRICAL CONTROL PACKAGE		MAIN USER INTERFACE		FANS CONTROLLED											
	MODEL	LOCATION	TYPE	LOCATION	FAN #	TYPE	FAN	FAN MARK	ZONE	CFM	MOTOR HP	MOTOR VOLT	CYCLE	MOTOR PHASE	MOTOR STARTER IN PANEL	VFD IN PANEL
HOOD CONTROLS	XKC-CV-SB-11-1-1-0	RIGHT CABINET ON HOOD-1	FULL COLOR TOUCHSCREEN	CABINET - RIGHT CABINET ON HOOD-1	1	SUPPLY	S1	MAU-1	1	1300	1	208	60	1	NO	NO
					2	EXHAUST	E1	EF-1 (HOOD-1)	1	2550	2	208	60	1	NO	NO

CONTROL FEATURES
 HOOD LIGHT CONTROL
 TEMP SENSORS (FACTORY INSTALLED) - QTY. 1
 DRY FIRE CONTACTS - QTY. 2
 LIGHTS OFF DURING FIRE
 EXHAUST MAX DURING FIRE
 SUPPLY OFF DURING FIRE
 BMS INTEGRATION - BACNET MSTP

SPECIAL DESIGN REQUESTS
 SDR #K2300291-1 - APPLIANCE CONTACTORS - 20A



DOC NUMBER: --- REV: ---

CAUTION
 UNIT MUST BE GROUNDED IN ACCORDANCE WITH N.E.C. POWER MUST BE OFF WHILE SERVICING.

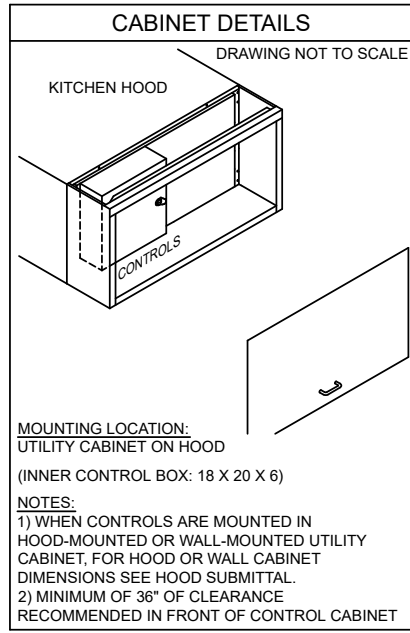
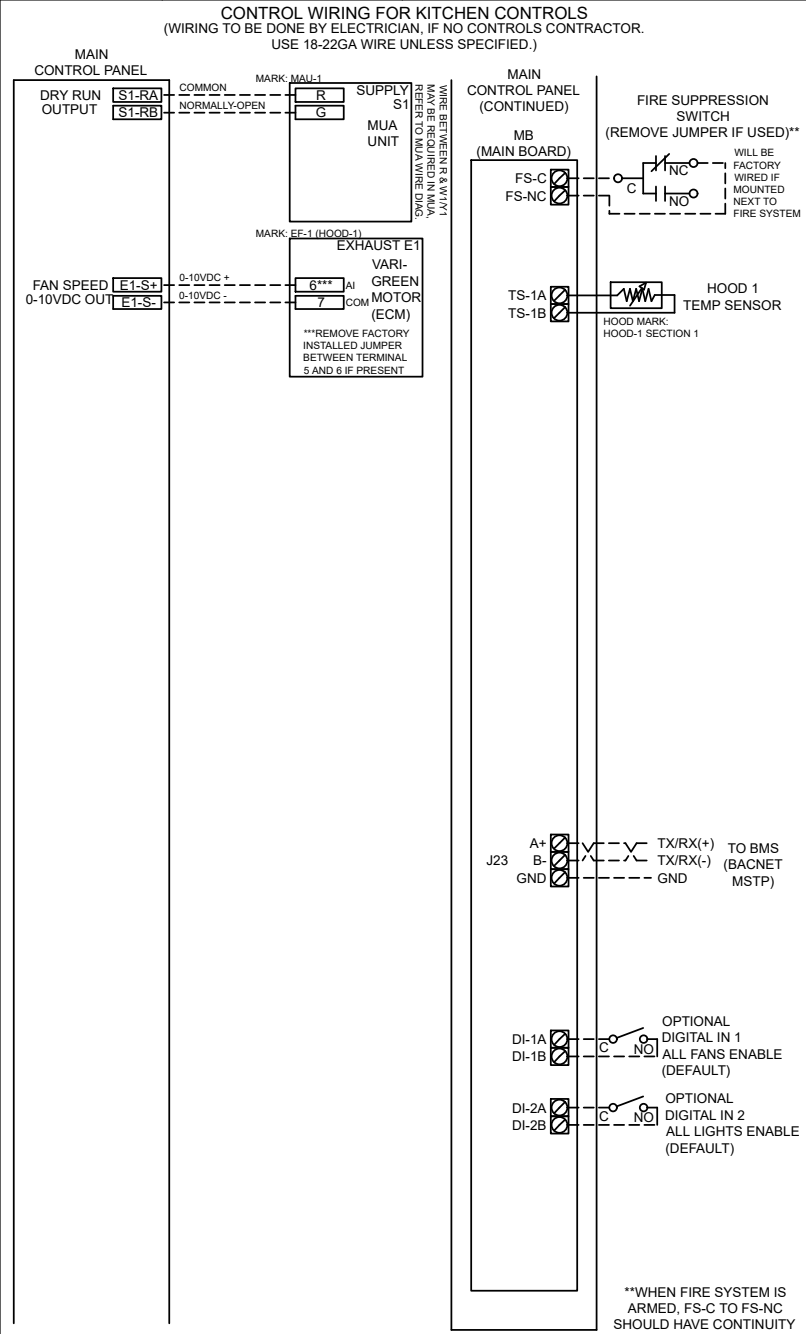
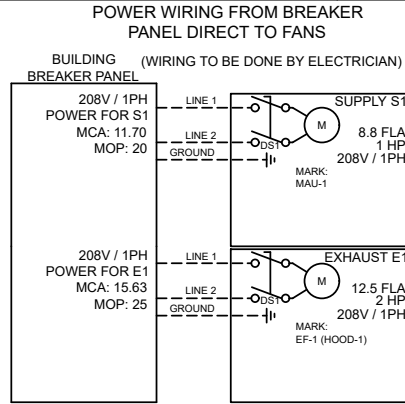
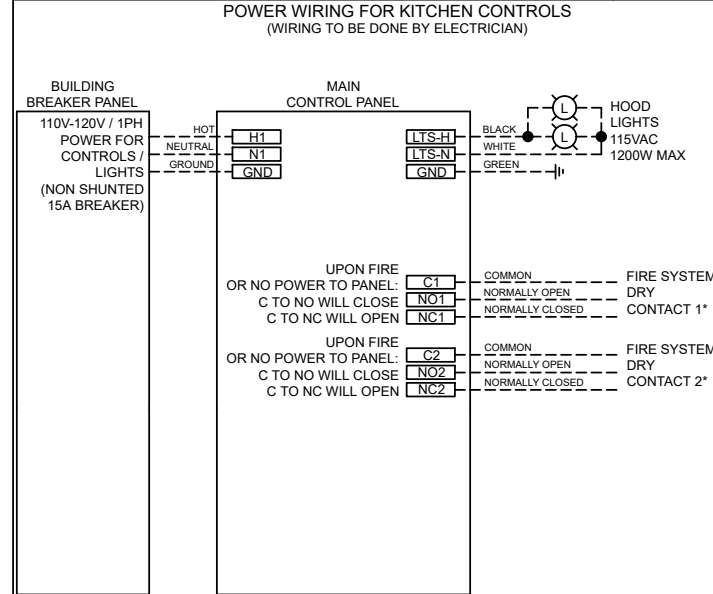
ATTENTION
 L'APPAREIL DOIT ÊTRE MIS À LA TERRE CONFORMÉMENT AU CODE C.E. L'ALIMENTATION DOIT ÊTRE COUPÉE DURANT L'ENTRETIEN.

COMMERCIAL APPLIANCE OUTLET CENTER
 ELECTRICAL RATINGS: 110-240V, 1PHASE, 50-60HZ, 15A
 BASE FILE #E200616, ML FILE #E313951

PRG VERSION: V5
 FIELD WIRING (CÂBLAGE LOCAL) FACTORY WIRING (CÂBLAGE À L'USINE)

NE PAS RETIRER CES DESSINS DE CET ÉQUIPEMENT SAUF INDICATION CONTRAIRE. UTILISER DES CONDUCTEURS EN CUIVRE CLASSÉS 90 °C. SERRER LES BORNES EN CUIVRE CLASSÉS 90 °C. SERRER LES BORNES À 8 LB-PO. SERRER LES COSSÉS/VIS D'ALIMENTATION AUX COUPLES INDICQUÉS POUR LE COMPOSANT. SERRER LES BORNES À VIS DE LA CARTE DE COMMANDE À 3.5 LB-PO. LA RÉSISTANCE DU CÂBLAGE DE COMMANDE LOCAL NE DOIT PAS DÉPASSER 0.75 OHM. POUR PLUS D'INFORMATION, CONSULTER LE MANUEL OU APPELER 1-800-371-8858.

WIRING DIAGRAM CODE: WDC#
 JOB NAME: CHIPOTLE-NORMAN SOUTH, OK 5723
 MODEL: XKC-CV-SB-11-1-1-0
 SERIAL NUMBER: WDSN#
 MARK: HOOD CONTROLS



MAIN USER INTERFACE DETAILS

MOUNTING TYPE:
 FACTORY MOUNTED:
 UTILITY CABINET - RIGHT END OF HOOD

USER INTERFACE CONTROL:
 FANS AND LIGHTS

INTERFACE CABLE LENGTH:
 7FT (FACTORY PROVIDED)

MOUNTING LOCATION:
 UTILITY CABINET ON HOOD
 (INNER CONTROL BOX: 18 X 20 X 6)

NOTES:
 1) WHEN CONTROLS ARE MOUNTED IN HOOD-MOUNTED OR WALL-MOUNTED UTILITY CABINET, FOR HOOD OR WALL CABINET DIMENSIONS SEE HOOD SUBMITTAL.
 2) MINIMUM OF 36" OF CLEARANCE RECOMMENDED IN FRONT OF CONTROL CABINET

FACTORY SETTINGS
 TYPE: CV
 CONFIGURATION: STANDARD
 ZONES: 1
 HOODS: 1
 EXHAUST FANS: 1
 SUPPLY FANS: 1
 MB ROOM SENSOR: NO
 MB TEMP SENSORS: 1
 HIGH TEMP FAULT: NO
 FREEZE PROTECTION: YES
 MB GAS RESET: NO
 FAN PROVING: NO
 BMS: BACNET MSTP

EXHAUST FAN SETTINGS
 SEE FAN CONFIGURATION TABLE BELOW

SUPPLY FAN SETTINGS
 SEE FAN CONFIGURATION TABLE BELOW

SENSOR SETTINGS
 SEE HOOD CONFIGURATION TABLE BELOW

USER INTERFACE SETTINGS (MB)
 FAN & LIGHT BUTTONS: SHOW BOTH (SEPERATE)

GENERAL SETTINGS
 TIME ZONE: CENTRAL DAYLIGHT (DEFAULT)

MB FIRE/FAULT SETTINGS
 EXHAUST DURING FIRE: MAX
 SUPPLY DURING FIRE: OFF
 LIGHTS DURING FIRE: OFF

ZONE CONFIGURATION

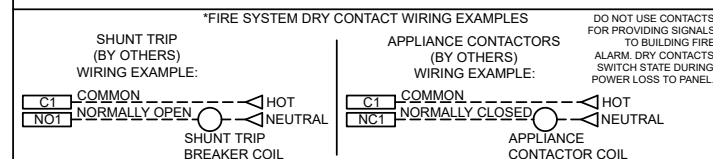
ZONE #	ZONE	ROOM TEMP
1	Z1	PRESET

HOOD CONFIGURATION

HOOD #	HOOD	HOOD MARK	ZONE	EXH A	EXH B	SUPPLY	MB TEMP SENSORS
1	H1	HOOD-1 SECTION 1	Z1	E1	-	S1	TS1

FAN CONFIGURATION

FAN #	TYPE	FAN	FAN MARK	ZONE	MIN CFM	MAX CFM	MODBUS VFD	VFD ADDRESS	MIN FREQ	MAX FREQ	MIN VDC	MAX VDC
1	SUPPLY	S1	MAU-1	Z1	-	1300	NO	-	-	-	-	10.0
2	EXHAUST	E1	EF-1 (HOOD-1)	Z1	-	2550	NO	-	-	-	-	7.7



PROJECT: 9/10/2025
 MARK: PROJECT: 9/10/2025
 MARK: PROJECT: 9/10/2025

DIRECT CHAIN ACX
 JOE AY OUB
 JOE.AY OUB@ACCUREX.COM
 (857)272-8727

ACCUREX

CHIPOTLE-NORMAN SOUTH, OK 5723
 HOOD CONTROLS

SERVICE INFORMATION

MARK: CERTIFICATION	MODEL: CERTIFICATION
ITEM: SERVICE	QUANTITY: 1

ACCUREX AFTERMARKET CERTIFICATION PROGRAM CONFIRMS THE EQUIPMENT IS INSTALLED AND OPERATING ACCORDING TO THE MANUFACTURER'S REQUIREMENTS BY A FACTORY AUTHORIZED SERVICER (FAS). INSTALLATION AND START-UP OF EQUIPMENT PER THE MANUFACTURER'S INSTALLATION AND OPERATIONS MANUAL TO BE PERFORMED BY OTHERS PRIOR TO THIS SERVICE. A WRITTEN REPORT WILL BE PROVIDED AFTER THIS SERVICE IS COMPLETED.

ACCUREX WILL COMMUNICATE WITH THE SITE CONTACT PROVIDED BY THE CUSTOMER TO SCHEDULE AND PERFORM ALL SERVICES INCLUDED WITHIN THIS QUOTE. IF SUCH SERVICES CANNOT BE SCHEDULED AND CONDUCTED WITHIN 18 MONTHS FROM DATE OF EQUIPMENT SHIPMENT (THE "SERVICE PERIOD"), THE SERVICES WILL EXPIRE, ACCUREX WILL RETAIN THE SERVICE FEE WITHOUT A REFUND OR CREDIT DUE TO CUSTOMER, AND CUSTOMER WILL BE RESPONSIBLE FOR ARRANGING REPLACEMENT SERVICES WITH OTHER PROVIDERS AND/OR ACCUREX.

IF ACCUREX PROVIDES REPLACEMENT SERVICES AFTER THE SERVICE PERIOD HAS EXPIRED, CUSTOMER WILL BE RESPONSIBLE FOR PAYING ADDITIONAL SERVICES FEES FOR SUCH SERVICES.

TRIP QUANTITY: 1

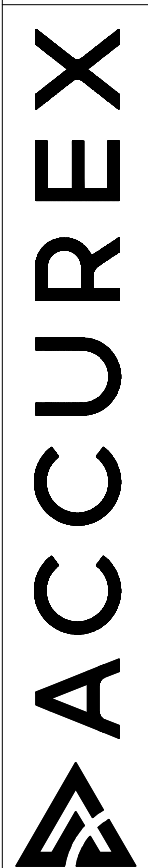
ONE TRIP TO THE JOBSITE INCLUDED FOR THE CERTIFICATION WORK TO BE PERFORMED (TIME ONSITE TBD BASED ON EQUIPMENT SELECTED)

EQUIPMENT INCLUDED IN CERTIFICATION:

- HOOD CONTROLS
- MAU-1
- EF-2 (RESTROOM)
- HOOD-1
- EF-1 (HOOD-1)

PROJECT: 9/10/2025
MARK: 5723
CHIPOTLE-NORMAN SOUTH, OK
CERTIFICATION
ILNS
CONSTRUCTION GROUP
EST. 1984

DIRECT CHAIN ACX
JOE AYUB
JOE.AYUB@ACCUREX.COM
(857)272-8727



FIRE SYSTEM INFORMATION

MARK	MODEL	LOCATION	FLOW POINTS		SUPPLY LINE	DETECTION	MARK(S) PROTECTED BY FIRE SYSTEM
			HOODS	PCU			
FSS	ANSUL R-102 WET CHEMICAL	CABINET – RIGHT END OF HOOD-1	20 UTILIZED 22 AVAILABLE		CONTINUOUS	FUSIBLE LINK	HOOD-1 SECTION 1

FIRE SYSTEM OPTIONS AND ACCESSORIES

FULL INSTALLATION (INCLUDES PRE-PIPED HOOD(S) WITH DETECTION AND FACTORY COORDINATED INSTALL)
 CHROME SLEEVES FOR FACTORY PROVIDED APPLIANCES DROPS - INCLUDED
 METAL BLOW-OFF CAPS - INCLUDED
 GAS VALVE - INCLUDED - ELECTRICAL SHUTOFF VALVE, 1.5", 110V, 60HZ - PART# 455396
 HOOD SUPPRESSION TANK - INCLUDED - 6 GAL. - [(2) 3.0 TANK(S)]
 REMOTE PULL STATION - STANDARD - FIELD INSTALLATION AT SINGLE POINT OF EGRESS

ANSUL R102 (WET CHEMICAL) FIRE PROTECTION SYSTEM - MODEL FSSC

CONTROL PANEL

NOTES:

WET CHEMICAL FIRE PROTECTION SYSTEM TO BE ANSUL R-102, DESIGNED IN COMPLIANCE WITH UL 300 REQUIREMENTS.

- VERIFICATION OF ALL COOKING EQUIPMENT MAKE, MODEL AND LOCATION REQUIRED FOR ALL FIRE PROTECTION SYSTEMS.
- ALL FIRE SYSTEM PIPING IS STANDARDLY TO THE RIGHT END OF THE HOOD UNLESS A WALL IS LOCATED ON THE RIGHT END.
- ANSUL AUTOMAN RELEASE TO BE LOCATED WITHIN 60" OF HOOD.

THE BASIC FIRE SYSTEM WILL INCLUDE THE FOLLOWING:

- GAS SHUT-OFF VALVE, IF REQUIRED, TO BE SUPPLIED BY MANUFACTURER (UP TO 2" DIAMETER AS STANDARD), AND INSTALLED BY A LICENSED PLUMBER.
- MICRO SWITCH TO BE SUPPLIED BY MANUFACTURER FOR CONNECTION TO, BUT NOT LIMITED TO, BUILDING ALARM SYSTEM(S), EXHAUST AND SUPPLY FANS AND ELECTRICAL POWER SHUT DOWN. FIELD WIRING AND CONNECTIONS TO BE PERFORMED BY A LICENSED ELECTRICIAN.

THE BASIC FIRE SYSTEM DOES NOT INCLUDE THE FOLLOWING:

- FULL DUMP TEST OTHER THAN WHAT IS SPECIFIED PER THE INSTALLATION MANUAL, OR TO SATISFY A STATE OR LOCAL CODE. PERMIT AND TESTING FEES ARE NOT INCLUDED UNLESS NOTED UNDER THE EQUIPMENT SCHEDULE FOR THE FIRE SYSTEM.
- MORE THAN TWO TRIPS TO THE JOBSITE OR SPECIAL TRANSPORTATION, OR OVERNIGHT LODGING REQUIREMENTS IN REMOTE AREAS. NORMAL TRAVEL DISTANCE IS FIRST 50 MI. (80.5 KM) FROM OFFICE.
- SPECIAL CLASSES OR ADDITIONAL LABOR FOR ACCESS TO SECURITY SENSITIVE AREAS.
- INSTALLATION OF GAS SHUT-OFF VALVE.
- SPECIAL DRAWINGS REQUIRED TO SATISFY STATE OR LOCAL CODE. PLAN EXAMINATION FEES, PE OR FS APPROVAL STAMP.
- UNION LABOR, GOVERNMENT LABOR, OR PREVAILING WAGES REQUIRED FOR FINAL FIELD HOOK-UP.
- ANY AND ALL ELECTRICAL COMPONENTS/CONNECTIONS REQUIRED TO SHUT DOWN FANS, SHUT OFF DEVICE FOR ELECTRIC COOKING EQUIPMENT (SHUNT TRIP BREAKER), OR ACTIVATE AN ALARM SYSTEM, ETC.
- ANY DISMANTLING OR REASSEMBLY REQUIRED TO GAIN ACCESS TO THE FIRE SUPPRESSION PIPING LOCATED ON THE TOP OF THE HOOD.
- ROUGH-IN HIDDEN CONDUIT FOR REMOTE PULL STATION OR GAS VALVE (FLUSH MOUNTED PULL STATION).
- INSTALLATION OF MORE THAN (1) REMOTE PULL STATIONS OR DISTANCES GREATER THAN 20 FT (6.1M).
- PARTS OR LABOR REQUIRED TO CORRECT PIPING DUE TO COOKING EQUIPMENT CHANGES OR DEVIATION FROM PLANS. OR ANY CHARGES FOR MISSING OR ADDITIONAL PARTS OTHER THAN THOSE INDICATED ON THE FIRE SUPPRESSION DETAIL.

WIRING DIAGRAM FOR MICRO SWITCHES

NOTES:

IF ELECTRIC RELEASE, BOTH UPPER SWITCHES WILL BE USED FOR ACTUATING ADDITIONAL AUTOMANS (THEY WILL BE WIRED TO EACH OTHER AND TO THE BROWN WIRE ON THE ELECTRIC SOLENOID). THEREFORE, USE ONE OF THE UN-UTILIZED LOWER SWITCHES TO WIRE BACK TO CONTROL PANEL (DO NOT USE EITHER OF THE UPPER SWITCHES).

IF USING LOWER SWITCHES TO WIRE BACK TO CONTROL PANEL, NORMALLY-CLOSED WILL BE BLACK LEAD, AND NORMALLY-OPEN WILL BE BROWN LEAD.

DPDT SWITCHES PROVIDED BY MANUFACTURER MAY BE WIRED PER TYPICAL EXAMPLES SHOWN. VERIFY WITH LOCAL CODES AND EQUIPMENT SUPPLIED AS THE CONNECTION NEEDED FOR YOUR INSTALLATION.

CONNECTION TO BUILDINGS ALARM

CONNECTION TO KC (PCB) CONTROL PANEL

NOTES:

1. --- DENOTES FIELD INSTALLATION.
 2. ——— DENOTES FACTORY INSTALLATION.

WIRING DIAGRAM FOR MANUAL RESET RELAY (ELECTRIC GAS VALVE ONLY)

ANSUL PN 426151 (FACTORY PN 468825)

NOTES:

**GAS VALVES: "UL LISTED ELECTRICALLY-OPERATED SAFETY VALVE FOR NATURAL OR LP GAS AS NEEDED OF APPROPRIATE PRESSURE AND TEMPERATURE RATING, 110/60/120" OR ANSUL GAS VALVES, PART NUMBERS 13707, 13708, 13709, 13710 AND 17643.

SEE ANSUL MANUAL SECTION 5 - INSTALLATION INSTRUCTIONS FOR ADDITIONAL WIRING SCHEMATICS FOR MANUAL RESET RELAY.

PROJECT 9/10/2025
 MARK
 DIRECT CHAIN ACX
 JOE AYOUB
 JOE.AYOUB@ACCUREX.COM
 (857)272-8727

ACCUREX
 PROJECT 9/10/2025
 MARK
 DIRECT CHAIN ACX
 JOE AYOUB
 JOE.AYOUB@ACCUREX.COM
 (857)272-8727

CHIPOTLE-NORMAN SOUTH, OK
 5723

FSS
 UL LISTED
 CONTROL PANEL ASSEMBLY

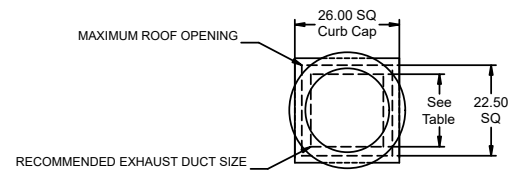
Direct Drive Upblast Centrifugal Roof Exhaust Fan

MARK INFORMATION		FAN INFORMATION									SOUND INFORMATION					MOTOR INFORMATION								
MARK	QTY	MODEL	DRIVE TYPE	VOLUME (CFM)	EXTERNAL SP (IN. WG)	TOTAL EXTERNAL SP (IN. WG)	FAN SPEED (RPM)	OUTLET VELOCITY (FT/MIN)	FEI	TOTAL WEIGHT (LB)	INLET dBA	INLET SONES	INLET SONES (SPHERICAL)	OUTLET dBA	OUTLET SONES	OPERATING POWER (HP)	MOTOR SIZE (HP)	FEP INPUT POWER (KW)	ENCLOSURE	VOLTAGE	CYCLE	PHASE	EC MOTOR	NEC FLA*
EF-1 (Hood-1)	1	XCUE-160-VG	Direct	2,550	1.2	1.2	1,330	1,482.56	1.4	110	68.74	16.82	0	0	0	0.87	2	0.78	TF	208	60	1	VariGreen	13.2

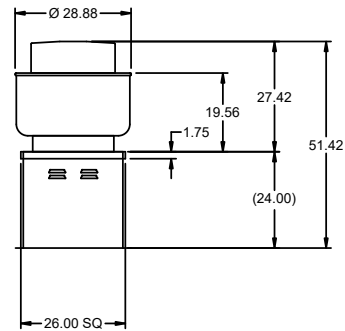
*NEC FLA - Based on table 430.250 or 430.248 of National Electrical Code 2020. Actual motor FLA may vary for sizing thermal overload, consult factory"

EF-1 (Hood-1) : SELECTED OPTIONS AND ACCESSORIES

One piece fully welded windband
 Tapered bushing wheel hub
 Breather tube outlet area min. 4.4 sq. in. (sizes 99-480), 2.0 sq. in. (sizes 60-95)
 Min. windband material thickness: 0.051" aluminum (060-240), 0.064" aluminum (240HP, 240XP), 0.080" aluminum (sizes 300-480)
 Curb Cap Size - 26 Square
 UL/cUL 705 Listed - Supplement SC - "Power Ventilators for Restaurant Exh. Appliances" (Formerly UL 762)
 Switch, NEMA-3R, Toggle,
 Aluminum Wheel Material

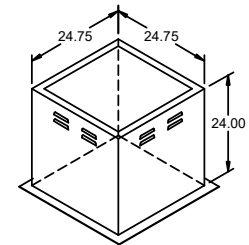


DUCT TYPE	SIZE
STANDARD	18 SQ
FIRE-WRAPPED	12 SQ



DUCT DIMENSIONS ARE LARGEST POSSIBLE DUCT TO FIT THROUGH CURB.
 CONSULT SYSTEM DESIGN ENGINEER FOR RECOMMENDED DUCT SIZE.

OVERALL HEIGHT MAY BE GREATER DEPENDING ON
 MOTOR, ADAPTER, AND/OR HINGE BASE.



PROJECT: 9/10/2025
 MARK: 5723
 CHIPOTLE-NORMAN SOUTH, OK
 EF-1 (HOOD-1)

DIRECT CHAIN ACX
 JOE AYOUB
 JOE.AYOUB@ACCUREX.COM
 (857)272-8727

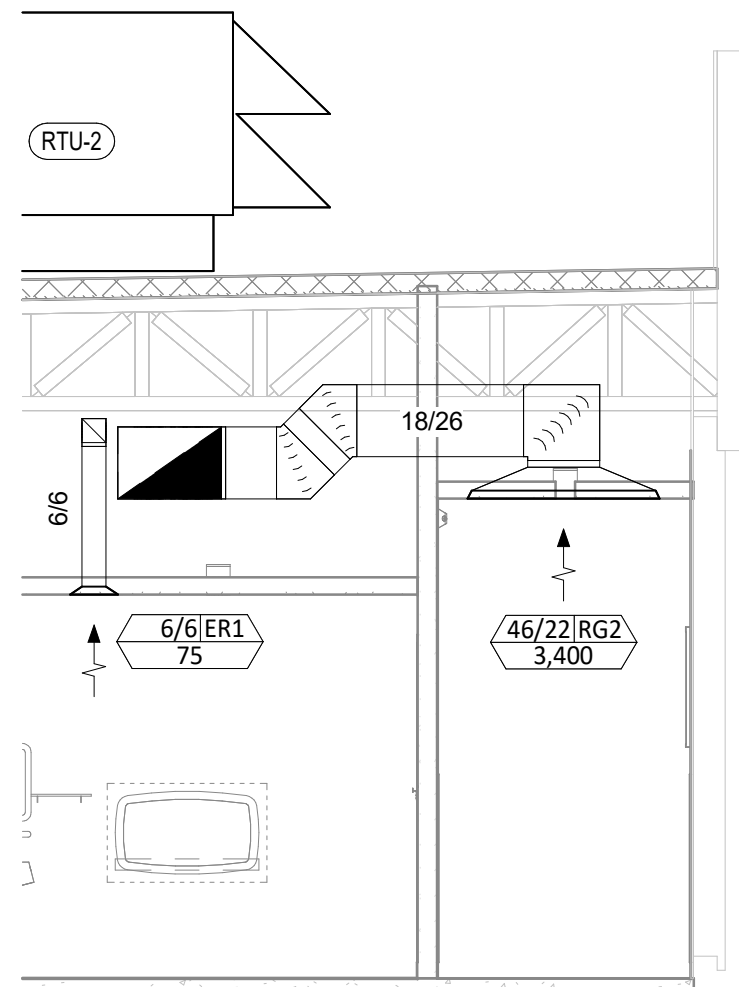


HVAC PLAN NOTES

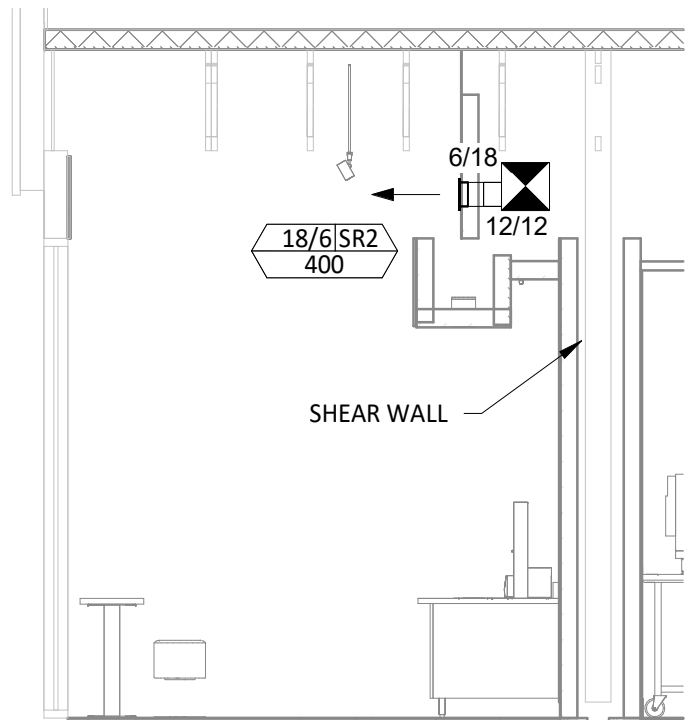
- SEE ARCHITECTURAL REFLECTED CEILING PLAN FOR CEILING MOUNTED EQUIPMENT LOCATION. TYPICAL.
- PAINT DUCTWORK VISIBLE THROUGH DINING ROOM SUPPLY REGISTERS BLACK. TYPICAL.
- PENETRATIONS THROUGH SHEAR WALL SHALL BE LIMITED TO 10" DIAMETER (OR A GROUP OF PENETRATIONS ALL CONTAINED WITHIN 10" DIAMETER). IF LARGER PENETRATIONS OR GROUPS OF PENETRATIONS ARE REQUIRED COORDINATE WITH STRUCTURAL ENGINEER FOR APPROPRIATE BRACING. SEE STRUCTURAL DRAWINGS FOR SHEAR WALL LOCATION.
- 26/18 DUCT UP FOR TRANSITION TO RTU-1 RETURN CONNECTION IN ROOF CURB. RTU-1 SHALL HAVE AN INTEGRAL SMOKE DETECTOR MOUNTED IN THE RETURN AIR STREAM. INTERLOCK SMOKE DETECTOR TO RTU-1 OPERATION.
- 26/18 DUCT UP FOR TRANSITION TO RTU-2 RETURN CONNECTION IN ROOF CURB. RTU-2 SHALL HAVE AN INTEGRAL SMOKE DETECTOR MOUNTED IN THE RETURN AIR STREAM. INTERLOCK SMOKE DETECTOR TO RTU-2 OPERATION.
- 26/18 DUCT UP FROM BUILDING SUPPLY THROUGH ROOF. TRANSITION TO RTU-1 SUPPLY CONNECTION IN ROOF CURB.
- 26/20 DUCT UP FROM BUILDING SUPPLY TO RTU-2 SUPPLY CONNECTION. TRANSITION IN ROOF CURB.
- 14/14 DUCT UP THROUGH ROOF. TRANSITION TO MAU-1 SUPPLY CONNECTION IN ROOF CURB.
- 16/16 DUCT UP FROM HOOD THROUGH ROOF TO EF-1 COMPLIANT WITH NFPA 96. PROVIDE RADIUS ELBOWS WITH AN INSIDE RADIUS OF 0.5W AT ELBOWS IN GREASE DUCT.
- 8/6 DUCT UP THROUGH ROOF TO EF-2.
- 28/6 DUCT DOWN TO MAKEUP AIR PSP DUCT CONNECTION. TRANSITION TO SUPPLY PLENUM OPENING SIZE. TYPICAL FOR 3.
- 8" DIA. DUCT DOWN TO AC PSP DUCT CONNECTION. TRANSITION TO SUPPLY PLENUM OPENING SIZE. TYPICAL. CAP UNUSED DUCT CONNECTIONS.
- INSTALL SINGLE-GANG VERTICAL J-BOX FOR GRIDPOINT THERMOSTATS FURNISHED BY TEMS FOR RTU-1 AND RTU-2 AT THIS LOCATION AT 48" AFF. COORDINATE WITH ELECTRICAL SWITCHING IN THIS AREA. PROVIDE WIRING AS SHOWN IN DETAIL 8/E710.
- INSTALL GRIDPOINT ZONE SENSOR MODULE FURNISHED BY TEMS FOR RTU-1 AT THIS LOCATION 72" AFF DIRECTLY TO WALL (NO JUNCTION BOX). COORDINATE LOCATION WITH EQUIPMENT. PROVIDE WIRING AS SHOWN IN DETAIL 8/E710.
- INSTALL GRIDPOINT ZONE SENSOR MODULE FURNISHED BY TEMS FOR RTU-2 AT THIS LOCATION 66" AFF DIRECTLY TO WALL (NO JUNCTION BOX). COORDINATE LOCATION WITH EQUIPMENT. PROVIDE WIRING AS SHOWN IN DETAIL 8/E710.
- INSTALL GRIDPOINT SUPPLY PROBE FURNISHED BY TEMS FOR RTU-1 IN THE SUPPLY DUCTWORK UPSTREAM FROM THE FIRST BRANCH CONNECTION. PROVIDE WIRING AS SHOWN IN DETAIL 8/E710.
- INSTALL GRIDPOINT SUPPLY PROBE FURNISHED BY TEMS FOR RTU-2 IN THE SUPPLY DUCTWORK UPSTREAM FROM THE FIRST BRANCH CONNECTION. PROVIDE WIRING AS SHOWN IN DETAIL 8/E710.
- INSTALL KITCHEN HOOD, HD-1. SUPPORT HOOD PER MANUFACTURER'S INSTALLATION INSTRUCTIONS AND AS DETAILED IN THE ARCHITECTURAL AND STRUCTURAL DRAWINGS. INSTALL HOOD ACCORDING TO THE REQUIREMENTS OF ITS LISTING, IN COMPLIANCE WITH NFPA 96, THE BUILDING CODE, AND AUTHORITIES HAVING JURISDICTION. HOOD SHALL HAVE AN INTEGRAL DUCT COLLAR TEMPERATURE SENSOR TO AUTOMATICALLY ENERGIZE THE EXHAUST AND MAKEUP AIR FANS IF COOKING TEMPERATURES ARE DETECTED. EXHAUST DUCT SYSTEM TO BE WELDED OR FACTORY-MANUFACTURED WATER AND AIR TIGHT. INSTALL CLEANOUTS PER CODE AND AS SHOWN. INSTALL HOOD PER DETAILS 2, 4, AND 9/M700. CHIPOTLE WILL PROVIDE AN INDEPENDENT TESTING AGENCY FOR TESTING THE INTEGRITY OF THE GREASE DUCT SYSTEM.

HVAC PLAN NOTES

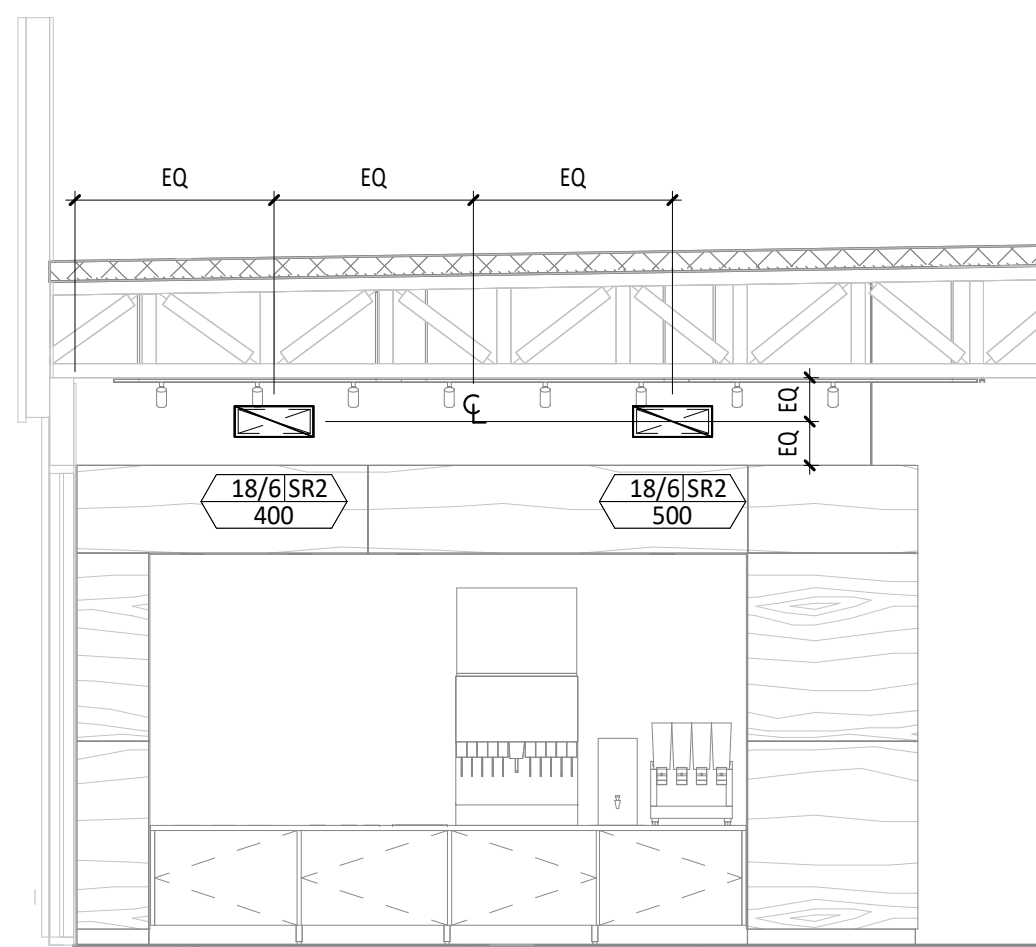
- INSTALL REMOTE CONDENSING UNIT FOR WALK-IN COOLER ON ROOF AS DETAILED IN THE ARCHITECTURAL AND STRUCTURAL DRAWINGS. INSTALL REFRIGERANT LINE SET, THERMOSTATIC EXPANSION VALVE, SOLENOID VALVE, TEMPERATURE CONTROL, SIGHT GLASS, FILTER DRIER, PRESSURE CONTROL, LOW AMBIENT CONTROLS, AND WEATHERPROOF HOUSING. TRAP AND SLOPE REFRIGERANT LINES PER MANUFACTURER'S RECOMMENDATIONS. INSTALLATION SHALL COMPLY WITH ASHRAE/ANSI STANDARD 15. INSTALL THE REFRIGERANT LINE SET UNDER THE ROOF DECK TO WITHIN 3' OF THE CONDENSING UNIT. CUT 2-1/2" HOLE IN WALK-IN COOLER ROOF FOR REFRIGERANT LINE SET AND SEAL PER THE COOLER MANUFACTURER'S INSTALLATION INSTRUCTIONS AFTER LINE SET IS INSTALLED.
- INSTALL REMOTE CONDENSER FOR ICE MACHINE ON ROOF AS DETAILED IN THE ARCHITECTURAL AND STRUCTURAL DRAWINGS. INSTALL REFRIGERANT LINE SET, THERMOSTATIC EXPANSION VALVE, SOLENOID VALVE, TEMPERATURE CONTROL, SIGHT GLASS, FILTER DRIER, PRESSURE CONTROL, LOW AMBIENT CONTROLS, AND WEATHERPROOF HOUSING. TRAP AND SLOPE REFRIGERANT LINES PER MANUFACTURER'S RECOMMENDATIONS. SEAL PIPING PENETRATIONS THROUGH ROOF. INSTALLATION SHALL COMPLY WITH ASHRAE/ANSI STANDARD 15. INSTALL THE REFRIGERANT LINE SET UNDER THE ROOF DECK TO WITHIN 3' OF THE REMOTE CONDENSER. IF REFRIGERANT PIPING TO ICE MAKER IS EXPOSED TO PUBLIC VIEW CONCEAL WITHIN A STAINLESS STEEL SHROUD AS SHOWN IN THE ARCHITECTURAL DRAWINGS.
- INSTALL ROOFTOP EQUIPMENT PER MANUFACTURER'S INSTALLATION INSTRUCTIONS AND AS DETAILED IN THE ARCHITECTURAL AND STRUCTURAL DRAWINGS.
- INSTALL EXHAUST FAN EF-1 PER DETAIL 5/M700 AND AS DETAILED IN THE ARCHITECTURAL AND STRUCTURAL DRAWINGS. INSTALL GREASE VIROGUARD SYSTEM FURNISHED BY CHIPOTLE ON EXHAUST FAN, EF-1.
- PROVIDE SUPPLY DIFFUSER CONNECTION TO SUPPLY SYSTEM PER DETAIL 1/M700. TYPICAL.
- PROVIDE AUDIO/VISUAL REMOTE SMOKE DETECTOR ANNUNCIATOR WITH REMOTE KEY OPERATED RESET. WIRE A UNIT BACK TO EACH SMOKE DETECTOR. MOUNT UNIT 60" AFF. TYPICAL.
- INSTALL REME HALO AIR PURIFIER FURNISHED BY TUV IN RTU PER DETAIL 6/M700. SEE ELECTRICAL DRAWINGS FOR POWER CONNECTION INFORMATION. INSTALL UV WARNING STICKERS ON FACE OF ENCLOSURE PER DETAIL AND ON ANY RTU ACCESS DOOR(S) THROUGH WHICH THE REME HALO WOULD BE VISIBLE IF OPENED.
- MAINTAIN 10" CLEARANCE BETWEEN WATER HEATER FLUE TERMINATION AND OUTSIDE AIR INTAKES. MAINTAIN 10" CLEARANCE BETWEEN WATER HEATER COMBUSTION AIR INTAKE AND EXHAUST FAN EF-1 DISCHARGE. SEE PLUMBING DRAWINGS FOR MORE INFORMATION ON WATER HEATER FLUE AND COMBUSTION AIR TERMINATIONS.
- ADJUST SUPPLY REGISTERS SO THAT SUPPLY AIR HITS WALL ON OPPOSITE SIDE OF ROOM AT APPROXIMATELY 7' AFF WITH NO DRAFTS FELT IN THE DINING ROOM.



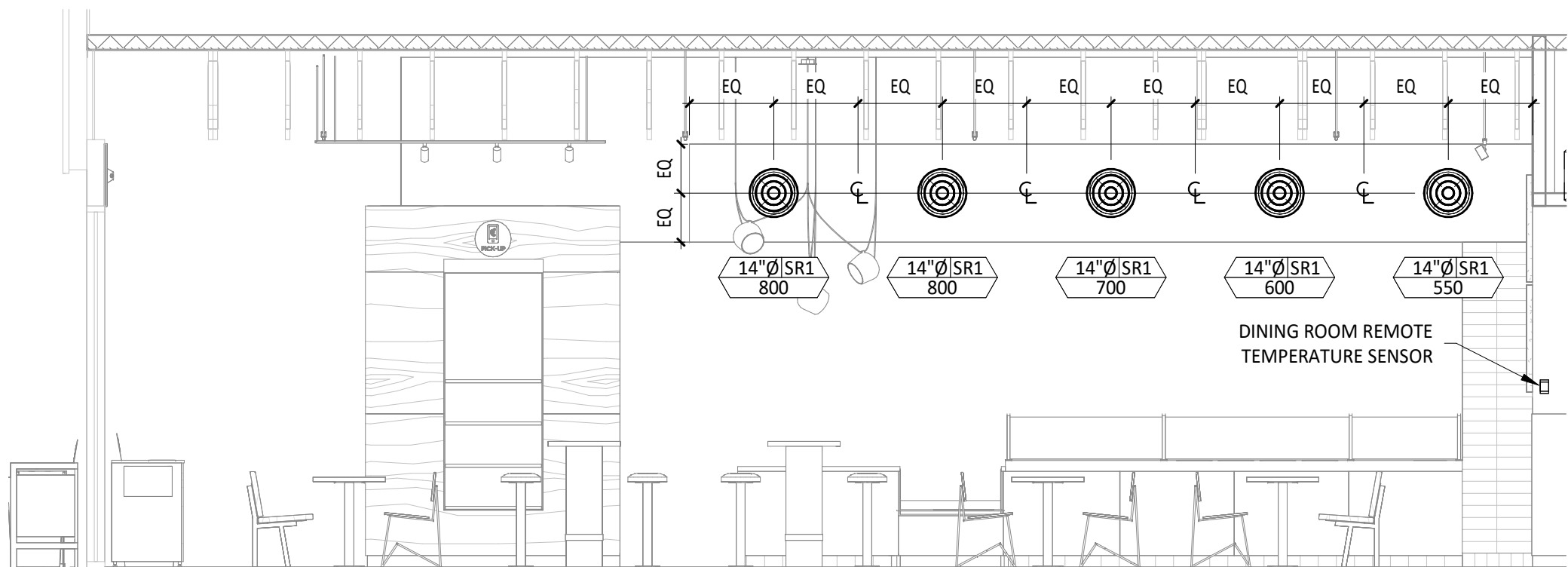
HVAC DINING ROOM RETURN SECTION
1/4" = 1'-0"



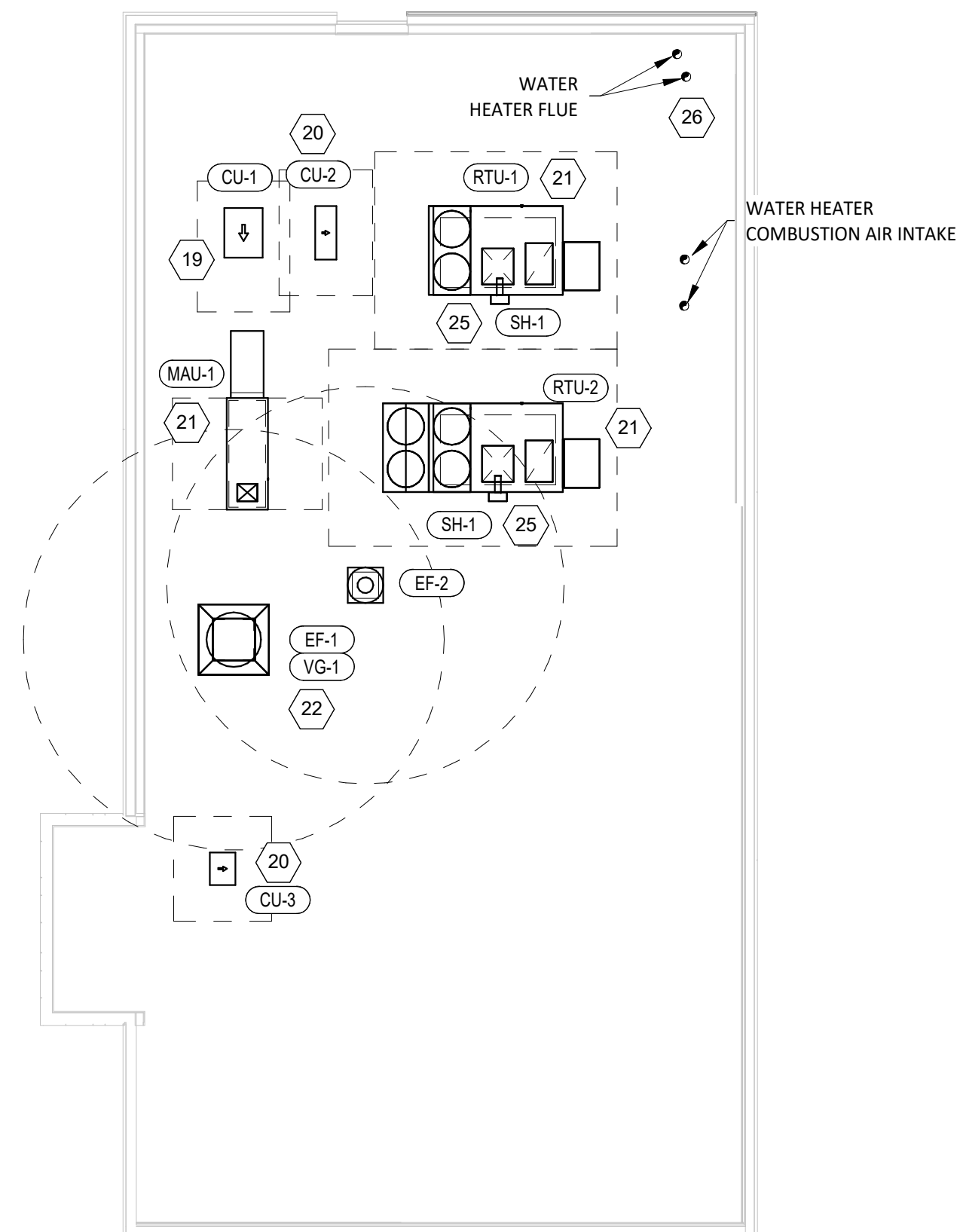
HVAC DINING ROOM SECTION
1/4" = 1'-0"



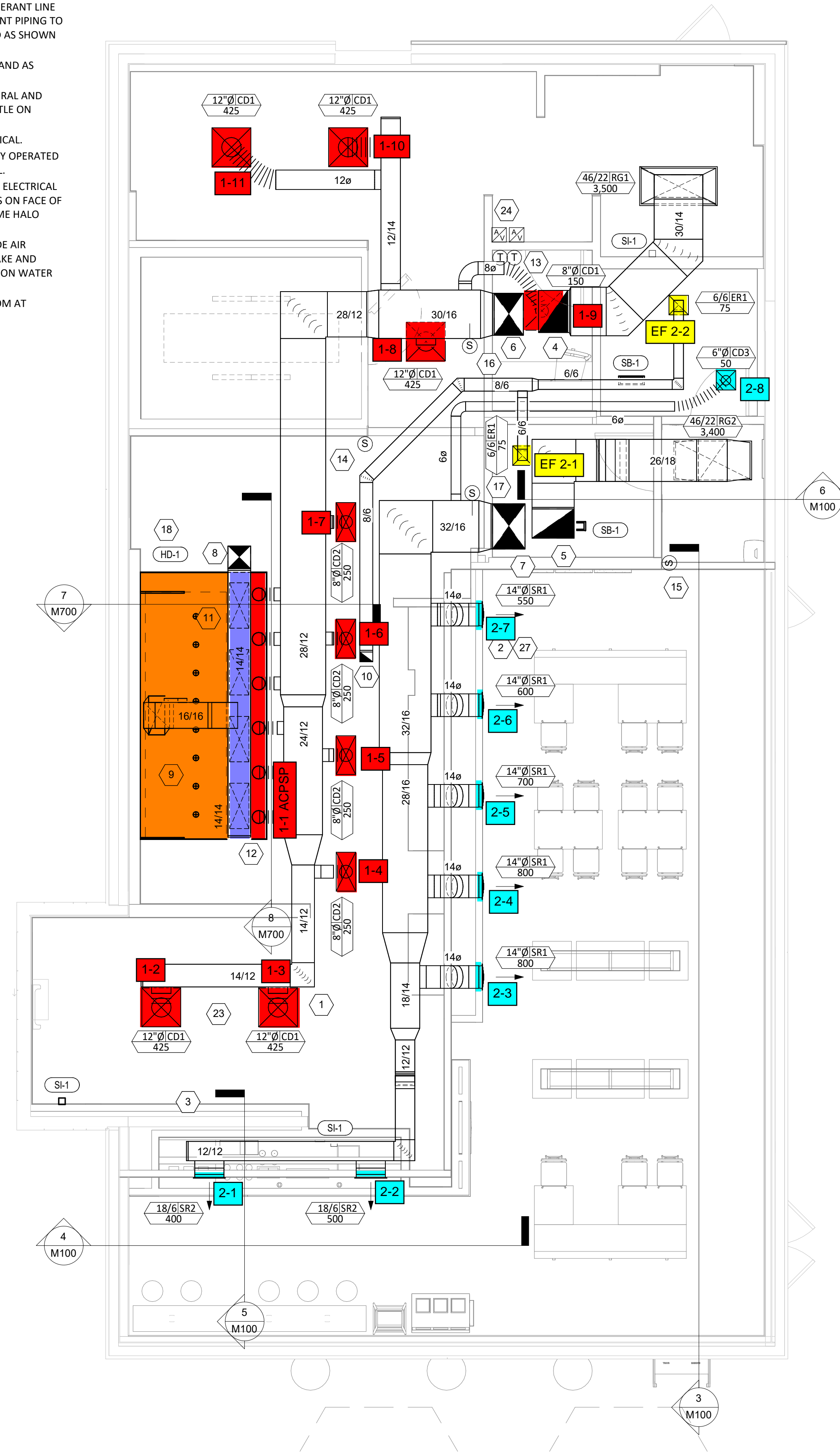
HVAC DINING ROOM SECTION
1/4" = 1'-0"



HVAC DINING ROOM SECTION
1/4" = 1'-0"



HVAC ROOF PLAN
1/8" = 1'-0"



HVAC FLOOR PLAN
1/4" = 1'-0"

Consultant:

 4635 Trueman Blvd, Suite 250
 Hilliard, Ohio 43026
 Phone: (614) 751-9610
 Fax: (614) 552-5240
 Contact: Andy Janosik
 (614) 328-2028
 ajanosik@nationalengineering.com

FOR
CONSTRUCTION

COPYRIGHT 2025
 THIS DRAWING IS AN INSTRUMENT OF SERVICE
 AND AS SUCH REMAINS THE PROPERTY OF
 CHIPOTLE MEXICAN GRILL, INC.. PERMISSION FOR
 USE OF THIS DOCUMENT IS LIMITED AND CAN BE
 EXTENDED ONLY BY WRITTEN AGREEMENT WITH
 CHIPOTLE MEXICAN GRILL, INC..



CHIPOTLE MEXICAN GRILL, INC.
 PO BOX 182566
 COLUMBUS, OH 43218-2566
 TELEPHONE: 614.318.2400
 INTERNET: WWW.CHIPOTLE.COM

STORE NO.: 5723
 NORMAN SOUTH, OK
 3170 CLASSEN BLVD.
 NORMAN, OK 73071

Issue Record:
 05.30.2025 PERMIT SET
 09.22.2025 CONSTRUCTION SET

Revisions:

Drawn: AJJ
 Checked: AJJ

Project No:
 2501125

Contents:
 HVAC PLAN

M100

FOR
 CONSTRUCTION

COPYRIGHT 2025
 THIS DRAWING IS AN INSTRUMENT OF SERVICE
 AND AS SUCH REMAINS THE PROPERTY OF
 CHIPOTLE MEXICAN GRILL, INC. PERMISSION FOR
 USE OF THIS DOCUMENT IS LIMITED AND CAN BE
 EXTENDED ONLY BY WRITTEN AGREEMENT WITH
 CHIPOTLE MEXICAN GRILL, INC.



CHIPOTLE MEXICAN GRILL, INC.
 PO BOX 182566
 COLUMBUS, OH 43218-2566
 TELEPHONE: 614.318.2400
 INTERNET: WWW.CHIPOTLE.COM

STORE NO.: 5723
 NORMAN SOUTH, OK
 3170 CLASSEN BLVD.
 NORMAN, OK 73071

Issue Record:	Permit Set
05.30.2025	PERMIT SET
09.22.2025	CONSTRUCTION SET

Revisions:

Drawn: AJJ
 Checked: AJJ

Project No:
 2501125

Contents:

HVAC DETAILS

M700

