

Report By:

National TAB
1329 E. KEMPER ROAD
SUITE 4210
CINCINNATI, OH 45246



Report: TAB REPORT
Function: Test, Adjust, & Balance
Date: 09/19/2023

PROJECT

**09-18-23 BARTACO - WEST HARTFORD, CT
(REVIVE)**

971 Farmington Ave

West Hartford, CT 06107

Client

BarTaco

Issue List

- BROKEN BELTS KEF-2
- CLOGGED MAU PSP(BOTH HOODS)
- DISH EXHAUST BORE ALIGNMENT IS OFF
- ECONMOZER for RTUs HAVE NO OA ACCESS/HOOD
- KEF-1 MOTOR SHEAVE RUBBING ON MOTOR ACCESS CAP
- KEF-1&2 Caps not able to secured
- MAU damaged duct work
- MAU EVAPORATOR COIL DIRTY
- MAU- MOTOR BORE/ SHEAVE MISALIGNMENT
- RR -EXHAUST/NO FLOW



09-18-23 BARTACO - WEST HARTFORD, CT (REVIVE)

Project Issue Information

Issue Name : BROKEN BELTS KEF-2
Description : I REPLACED BELTS INSIDE KEF-2 with the old BX-25 belts that looked pre used but are in better condition then what was currently on the units when adjustment of the until was made. Old belts where thrown into appropriate disposal containers
Created By : National TAB **Assigned To :** National TAB - Will Turnbough
Status : Open
Originated Date : 09/20/2023 - JOASH ALBIN - National TAB



09-18-23 BARTACO - WEST HARTFORD, CT (REVIVE)

Project Issue Information

Issue Name : CLOGGED MAU PSP(BOTH HOODS)
Description : PSP on both hoods is 100% clogged. Technician attempted to clean them out but as soon as the seal was broken dirty and debris poured out of the PSP and all over the kitchen area. These should be cleaned at night after closing so that the PSP diffusers can be pulled down and thoroughly cleaned.
Created By : National TAB **Assigned To :** National TAB - Will Turnbough
Status : Open
Originated Date : 09/20/2023 - JOASH ALBIN - National TAB

Project Issue File Details



100percent-covered-in..
09/20/2023

09-18-23 BARTACO - WEST HARTFORD, CT (REVIVE)

Project Issue Information

Issue Name : DISH EXHAUST BORE ALIGNMENT IS OFF
Description : BORE ALIGNMENT IS OFF ON MOTOR SHEAVE, ITS LEVEL AND NOT CAUSING ANY ISSUES CURRENTLY, BUT THERE IS A 1.125" GAP BETWEEN THE TOP OF THE BORE AND THE TOP OF THE SHEAVE.

Created By : National TAB **Assigned To :** National TAB - Will Turnbough

Status : Open

Originated Date : 09/20/2023 - JOASH ALBIN - National TAB

Project Issue File Details



Key
09/20/2023



Howdeep-the-bore-is.j..
09/20/2023



09-18-23 BARTACO - WEST HARTFORD, CT (REVIVE)

Project Issue Information

Issue Name : ECONMOZER for RTUs HAVE NO OA ACCESS/HOOD
Description : RTU-1, and 2 do not have OA access, economizers appear to have been installed, but have no air access preventing them from being until used. Recommend installing hood and OA FILTERS so that the units can pull in outside air to bring you building into balance.

Created By : National TAB **Assigned To :** National TAB - Will Turnbough

Status : Open

Originated Date : 09/20/2023 - JOASH ALBIN - National TAB

Project Issue File Details



**NOOAACCESS
09/20/2023**



**ECONOMIZERinstalled.j..
09/20/2023**



**Controls
09/20/2023**

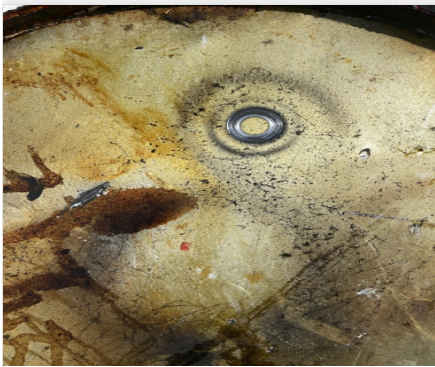


09-18-23 BARTACO - WEST HARTFORD, CT (REVIVE)

Project Issue Information

Issue Name : KEF-1 MOTOR SHEAVE RUBBING ON MOTOR ACCESS CAP
Description : The motor sheave has rubbed a circle on the top of the cap. Replace cap so that the sheave isn't damaged, this will keep the motor from over heating and make the belts last longer.
Created By : National TAB **Assigned To :** National TAB - Will Turnbough
Status : Open
Originated Date : 09/20/2023 - JOASH ALBIN - National TAB

Project Issue File Details



MOTOR-SHEAVE-RUB-MARK..
09/20/2023



09-18-23 BARTACO - WEST HARTFORD, CT (REVIVE)

Project Issue Information

Issue Name : KEF-1&2 Caps not able to secured
Description : ALL CLIPS MISSING SCREWS AND BOLTS TO KEEP CAPS ON THD UNITS
Created By : National TAB **Assigned To :** National TAB - Will Turnbough
Status : Open
Originated Date : 09/20/2023 - JOASH ALBIN - National TAB

Project Issue File Details



Missingbolt-screw.jpe..
09/20/2023



09-18-23 BARTACO - WEST HARTFORD, CT (REVIVE)

Project Issue Information

Issue Name : MAU damaged duct work
Description : MAU has significant damage to the internal duct system. Ductwork looks like it has been used as a shelf and eventually a part of it gave way and flattened. Repairs spur to have been made, but there are small holes in bent parts of the sheet metal and a large whole that has experienced heavy damage resulting in a loss of significant air designed for the Hoods that is instead push air into the attic.
Created By : National TAB **Assigned To :** National TAB - Will Turnbough
Status : Open
Originated Date : 09/19/2023 - JOASH ALBIN - National TAB

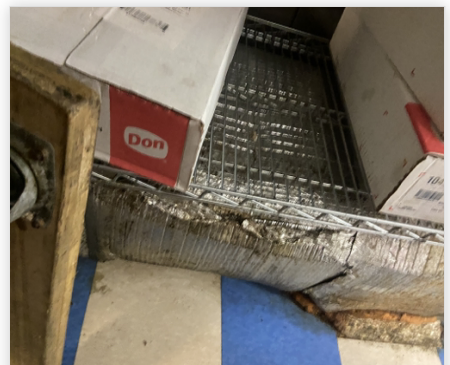
Project Issue File Details



Majorhole
09/19/2023



Small-hole
09/19/2023



Flattened-duct
09/19/2023

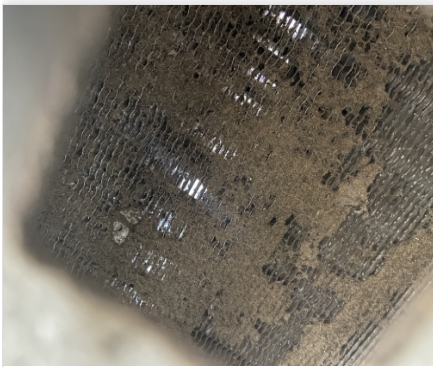


09-18-23 BARTACO - WEST HARTFORD, CT (REVIVE)

Project Issue Information

Issue Name : MAU EVAPORATOR COIL DIRTY
Description : 70% of evaporator coil for MAU dirty preventing air to flow through the coils reducing the efficiency of the unit as well as reducing the amount of air supplied to kitchen area
Created By : National TAB **Assigned To :** National TAB - Will Turnbough
Status : Open
Originated Date : 09/20/2023 - JOASH ALBIN - National TAB

Project Issue File Details



Dirty-MUA-EVAP-coils...
09/20/2023



09-18-23 BARTACO - WEST HARTFORD, CT (REVIVE)

Project Issue Information

Issue Name : MAU- MOTOR BORE/ SHEAVE MISALIGNMENT
Description : BORE AND SHEAVE ARE NOT ALIGNED, there is 3/4" from the top of the bore to the top of the sheave
Created By : National TAB **Assigned To :** National TAB - Will Turnbough
Status : Open
Originated Date : 09/20/2023 - JOASH ALBIN - National TAB



09-18-23 BARTACO - WEST HARTFORD, CT (REVIVE)

Project Issue Information

Issue Name : RR -EXHAUST/NO FLOW
Description : Restroom Exhaust had no flow, even on low flow hood settings. Both men and women's restrooms have no exhaust. Women's restroom is slightly warmer than the men's room.
Created By : National TAB **Assigned To :** National TAB - Will Turnbough
Status : Open
Originated Date : 09/19/2023 - JOASH ALBIN - National TAB

National TAB

Project: 09-18-23 BARTACO - WEST HARTFORD, CT (REVIVE)

System/Unit: AHU/RTU



Asset: RTU1

AREA:

Unit Data		
	Design	Actual
MFG	CARRIER	YORK
Serial Num	-	N1B2593401
Model Num	48HCEE17D	ZS-15N40BTAAA1
Type	RTU	RTU
Configuration	VERTICAL	HORIZONTAL
Num OA Filters 1	-	NA
OA Filter Size 1	-	NA
Num Final Filter 1	-	5
Final Filter Size 1	-	18X24X2

Motor Data		
	Design	Actual
Motor MFG	-	BALDOR
Frame	-	184T
Horsepower	-	5
Motor Rpm	-	1750
Phase	3	3
Rated Voltage	208	208
Rated Amperage	-	13

Drive Data		
	Design	Actual
Motor Sheave Size	-	6.5"
Motor Bore Size	-	1.125
Motor Sheave SetPt	-	2.5 OPEN
Fan Sheave Size	-	11"
Fan Sheave Bore	-	0.875"
Belt CL Distance	-	26"
Num of Belts	-	1
Belt Size	-	BX75
Belt Alignment	-	GOOD

Test Data		
	Design	Actual
SF CFM	6000	5846
SF RPM	-	851
RA CFM	6000	
OA CFM	0	0
RL Voltage	-	208/209/210
RL Amperage	-	8.5/8.5/8.4
SF Rotation	-	CCW
RA Damper Position	-	100%
Min OA Damper Position	-	NA
Min OA Damper Type	-	NA
OA Enthalpy Setpt	-	NA

Performance Data		
	Design	Actual
MA Plenum SP	-	-0.13"
Fan Suction SP	-	-0.70"
Fan Discharge SP	-	0.31"
Total ESP	0.75	0.83"
Fan Total SP	-	1.01"

General		
	Design	Actual
Fan Rotation Correct	-	YES
Unit Filters Clean	-	NO
Condensate Drain Installed	-	YES

Completed By: JOASH ALBIN on 09/19/2023

National TAB

Project: 09-18-23 BARTACO - WEST HARTFORD, CT (REVIVE)



System/Unit: AHU/RTU

Asset: RTU2

AREA:

Unit Data		
	Design	Actual
MFG	CARRIER	YORK
Serial Num	-	N1D2734993
Model Num	48HCCEE17D	ZS-15N40BTAAA1B
Type	RTU	RTU
Configuration	VERTICAL	HORIZONTAL
Num OA Filters 1	-	NA
OA Filter Size 1	-	NA
Num Final Filter 1	-	5
Final Filter Size 1	-	18X24X2

Motor Data		
	Design	Actual
Motor MFG	-	BALDOR
Frame	-	184T
Horsepower	-	5
Motor Rpm	-	1750
Phase	3	3
Rated Voltage	208	208
Rated Amperage	-	13

Drive Data		
	Design	Actual
Motor Sheave Size	-	6.5"
Motor Bore Size	-	1.125"
Motor Sheave SetPt	-	0.5 OPEN
Fan Sheave Size	-	11"
Fan Sheave Bore	-	0.875"
Belt CL Distance	-	26"
Num of Belts	-	1
Belt Size	-	BX75
Belt Alignment	-	GOOD

Test Data		
	Design	Actual
SF CFM	6000	6088
SF RPM	-	915
RA CFM	6000	6088
OA CFM	0	0
RL Voltage	-	208/210/211
RL Amperage	-	8.5/8.7/8.6
SF Rotation	-	CCW
RA Damper Position	-	100%
Min OA Damper Position	-	0%
Min OA Damper Type	-	NA
OA Enthalpy Setpt	-	NA

Performance Data		
	Design	Actual
MA Plenum SP	-	-0.17"
Fan Suction SP	-	-0.90"
Fan Discharge SP	-	0.52"
Total ESP	0.75	1.07"
Fan Total SP	-	1.42"

General		
	Design	Actual
Fan Rotation Correct	-	YES
Unit Filters Clean	-	NO
Condensate Drain Installed	-	YES

Completed By: JOASH ALBIN on 09/20/2023

Notes:
BELT SLIGHTLY ABOVE FAN SHEAVE

Written By: JOASH ALBIN on 09/19/2023

National TAB

Project: 09-18-23 BARTACO - WEST HARTFORD, CT (REVIVE)

System/Unit: FAN - Exhaust



Asset: DWX1

AREA:DISHWASHER

Unit Data		
	Design	Actual
MFG	GREENHECK	DAYTON
Model Num	USGF-140HP-4	4YY14
Serial Num	-	21760737
Type	ROOF MNTD	ROOF MOUNTED
Configuration	VERTICAL	VERTICAL

Motor Data		
	Design	Actual
Motor MFG	-	DAYTON
Frame	-	48YZ
Horsepower	1/4	1/3
Motor Rpm	-	1725
Phase	1	1
Voltage (rated)	115	115
Amperage (rated)	-	6.6
Service Factor	-	1.0

Test Data		
	Design	Actual
CFM	600	278
Fan RPM	-	1700
Fan Rotation	-	CCW
Motor RPM	-	1740
System SetPt	-	4 OPEN
RL Voltage	-	119
RL Amperage	-	3.1
Total ESP	1.25"	0.37"
Fan Inlet SP	-	-0.37"
Fan Discharge SP	-	ATM

Completed By: JOASH ALBIN on 09/20/2023

National TAB

Project: 09-18-23 BARTACO - WEST HARTFORD, CT (REVIVE)

System/Unit: FAN - Exhaust



Asset: KX1

AREA: KITCHEN HOOD

Unit Data		
	Design	Actual
MFG	GREENHECK	CAPTIVE AIRE
Model Num	SWB-215-20	NA16FA
Serial Num	-	1425202
Type	UTILITY	UPBLAST
Configuration	VERTICAL	VERTICAL

Motor Data		
	Design	Actual
Motor MFG	-	WEG
Frame	-	E56
Horsepower	2.0	2
Motor Rpm	-	1710
Phase	3	3
Voltage (rated)	208	208
Amperage (rated)	-	6.2
Service Factor	-	1.15

Test Data		
	Design	Actual
CFM	3597	3498
Fan RPM	-	1145
Fan Rotation	-	CCW
Motor RPM	-	1739
System SetPt	-	1 TURN OPEN
RL Voltage	-	208/209/210
RL Amperage	-	4.5/4.6/4.7
Total ESP	1.25"	1.38"
Fan Inlet SP	-	-1.38"
Fan Discharge SP	-	ATM

Completed By: JOASH ALBIN on 09/19/2023

Notes:
GREASE OVERFLOW, HEAVY GREASE INSIDE SHROUD,

MOTOR BORE RUBBING ON TOP OF LID

Written By: JOASH ALBIN on 09/19/2023

National TAB

Project: 09-18-23 BARTACO - WEST HARTFORD, CT (REVIVE)

System/Unit: FAN - Exhaust



Asset: KX2

AREA: KITCHEN HOOD

Unit Data		
	Design	Actual
MFG	GREENHECK	CAPTIVE-AIRE
Model Num	SWB-215-20	NA16FA
Serial Num	-	1425202
Type	UTILITY	UPBLAST
Configuration	VERTICAL	VERTICAL

Motor Data		
	Design	Actual
Motor MFG	-	WEG
Frame	-	E56
Horsepower	2.0	2
Motor Rpm	1725	1710
Phase	3	3
Voltage (rated)	208	208
Amperage (rated)	-	6.2
Service Factor	-	1.15

Test Data		
	Design	Actual
CFM	3117	3287
Fan RPM	-	1745
Fan Rotation	-	CCW
Motor RPM	-	909
System SetPt	-	2 TURNS OPEN BX-25 5 TURNS OPEN
RL Voltage	-	208/209/
RL Amperage	-	4.0/4.1/4.2
Total ESP	1.25"	1.02"
Fan Inlet SP	-	-1.02"
Fan Discharge SP	-	ATM

Completed By: JOASH ALBIN on 09/19/2023

Notes:
REDUCED FROM 4383 TO 3287

Written By: JOASH ALBIN on 09/20/2023

National TAB

Project: 09-18-23 BARTACO - WEST HARTFORD, CT (REVIVE)

System/Unit: FAN - Exhaust



Asset: TX1

AREA:RR

Unit Data		
	Design	Actual
MFG	GREENHECK	FANTECH
Model Num	GB-091-4	FKD8XL
Serial Num	-	1004349717
Type	UPBLAST	INLINE
Configuration	VERTICAL	VERTICAL

Motor Data		
	Design	Actual
Motor MFG	-	NL
Frame	-	NL
Horsepower	1/4	NL
Motor Rpm	1725	NL
Phase	1	1
Voltage (rated)	120	115
Amperage (rated)	-	2.99
Service Factor	-	1

Drive Data		
	Design	Actual
Motor Sheave Size	-	NO ACCESS
Motor Bore Size	-	NO ACCESS
Motor Sheave SetPt	-	NO ACCESS
Fan Sheave Size	-	NO ACCESS
Fan Sheave Bore	-	NO ACCESS
Belt CL Distance	-	NO ACCESS
Num of Belts	-	NO ACCESS
Belt Size	-	NO ACCESS

Test Data		
	Design	Actual
CFM	375	0
Fan RPM	-	0
Fan Rotation	-	0
Motor RPM	-	0
RL Voltage	-	0
RL Amperage	-	0
Suction ESP	-	0
Discharge ESP	-	0
Total ESP	0.5"	ATM

Completed By: JOASH ALBIN on 09/20/2023

Notes:
NO RESTROOM EXHAUST

Written By: JOASH ALBIN on 09/20/2023

National TAB

Project: 09-18-23 BARTACO - WEST HARTFORD, CT (REVIVE)

System/Unit: FAN - Supply



Asset: MUA1

AREA:

Unit Data		
	Design	Actual
MFG	NA	CAPTIVE AIRE
Model Num	NA	A2-G15
Serial Num	-	1425202
Type	MUA	MUA
Configuration	VERTICAL	VERTICAL

Motor Data		
	Design	Actual
Motor MFG	-	WEG
Frame	-	E56
Horsepower	-	3
Motor Rpm	-	1730
Phase	3	3
Voltage (rated)	208	208
Amperage (rated)	-	8.7
Service Factor	-	1.0

Gas Heat		
	Design	Actual
Heater Operates (y/n)	-	YES
Flame Status (pass/fail)	-	PASS
Inlet Air Temp SetPt	-	60
Discharge Air Temp SetPt	-	70
Air Flow Switch SP Actual	-	0.23"

Test Data		
	Design	Actual
CFM	5372	2576
SF RPM	-	1761
Motor RPM	-	904
SF System SetPt	-	BELT
RL Voltage	-	208/209/209
RL Amperage	-	5.4/4.8/5.1
Total ESP	-	NA
Fan Discharge SP	-	NA

General		
	Design	Actual
Fan Rotation Correct	-	YES

Completed By: JOASH ALBIN on 09/19/2023

National TAB

Project: 09-18-23 BARTACO - WEST HARTFORD, CT (REVIVE)



System/Unit: Kitchen Hood Type I

Asset: HD1

AREA:

Unit Data		
	Design	Actual
MFG	NA	CAPTIVE AIRE
Model Num	NA	FRONT
Job / Serial Num	-	1425202
Type	-	PSP
Hood length	-	200
Hood Width	-	60
Supply Plenum Type	-	PSP
Supply Plenum Width	-	16
Supply Plenum Length	-	200

Test Data Exhaust		
	Design	Actual
Filter Type	-	BAFFLE
Filter Size 1	-	16X18
Filter Size 2	-	16X16
Filter Qty 1	-	8
Filter Qty 2	-	6
Filter AK factor size 1	-	2.08
Filters AK factor size 2	-	1.63
Filter Total AK Area	-	19.88
Filter1 FPM	-	135
Filter2 FPM	-	150
Filter3 FPM	-	188
Filter4 FPM	-	225
Filter5 FPM	-	256
Filter6 FPM	-	215
Filter7 FPM	-	178
Filter8 FPM	-	145
Filter9 FPM	-	142
Filter10 FPM	-	129
Filter Ave FPM(corr)	-	176
CFM	-	3498

Cooking Equipment		
	Design	Actual
Item 1	-	GRIDDLE
Item 2	-	FRYER
Item 3	-	GRIDDLE
Item 4	-	FRYER

Test Data Supply		
	Design	Actual
Total AK Area	-	200X16
Kv factor (Vel)	-	22.2
Num of Readings	-	12
Reading1 FPM	-	70
Reading2 FPM	-	77
Reading3 FPM	-	73
Reading4 FPM	-	71
Reading5 FPM	-	14
Reading6 FPM	-	70
Reading7 FPM	-	25
Reading8 FPM	-	76
Reading9 FPM	-	79
Reading10 FPM	-	70
Reading11 FPM	-	70
Reading12 FPM	-	72
Reading13 FPM	-	
Reading14 FPM	-	
Ave FPM(corr)	-	52
CFM	-	1155

Completed By: JOASH ALBIN on 09/19/2023

National TAB

Project: 09-18-23 BARTACO - WEST HARTFORD, CT (REVIVE)



System/Unit: Kitchen Hood Type I

Asset: HD2

AREA:

Unit Data		
	Design	Actual
MFG	NA	CAPTIVE AIRE
Model Num	NA	NA16FA
Job / Serial Num	-	1425202
Type	-	UPBLAST
Hood length	-	200
Hood Width	-	60
Supply Plenum Type	-	PSP
Supply Plenum Width	-	16
Supply Plenum Length	-	200

Test Data Exhaust		
	Design	Actual
Filter Type	-	BAFFLE
Filter Size 1	-	16X18
Filter Size 2	-	16X16
Filter Qty 1	-	8
Filter Qty 2	-	2
Filter AK factor size 1	-	2.08
Filters AK factor size 2	-	1.62
Filter Total AK Area	-	19.88
Filter1 FPM	-	150
Filter2 FPM	-	202
Filter3 FPM	-	245
Filter4 FPM	-	300
Filter5 FPM	-	305
Filter6 FPM	-	281
Filter7 FPM	-	225
Filter8 FPM	-	176
Filter9 FPM	-	154
Filter10 FPM	-	125
Filter11 FPM	-	
Filter12 FPM	-	
Filter Ave FPM(corr)	-	220
CFM	-	4356

Cooking Equipment		
	Design	Actual
Item 1	-	OVEN
Item 2	-	RANGE
Item 3	-	FRYER
Item 4	-	
Item 5	-	

Test Data Supply		
	Design	Actual
Total AK Area	-	200X16
Kv factor (Vel)	-	0.90
Num of Readings	-	12
Reading1 FPM	-	71
Reading2 FPM	-	70
Reading3 FPM	-	54
Reading4 FPM	-	57
Reading5 FPM	-	75
Reading6 FPM	-	71
Reading7 FPM	-	73
Reading8 FPM	-	70
Reading9 FPM	-	70
Reading10 FPM	-	70
Reading11 FPM	-	72
Reading12 FPM	-	79
Reading14 FPM	-	
Ave FPM(corr)	-	64
CFM	-	1422

Completed By: JOASH ALBIN on 09/19/2023

National TAB

Project: 09-18-23 BARTACO - WEST HARTFORD, CT (REVIVE)

System/Unit: Kitchen Hood Type II



Asset: HD(Type2)1

AREA:

Unit Data		
	Design	Actual
MFG	NA	DAYTON
Model Num	NA	4YY14
Serial Num	-	217607737
Type	-	DISH
Hood length	-	54
Hood Width	-	54

Test Data		
	Design	Actual
Exhaust CFM	-	278

Completed By: JOASH ALBIN on 09/20/2023